

**CHAPTER**

**77**

**ENGINE INDICATING**



**757**  
**ILLUSTRATED TOOL AND EQUIPMENT MANUAL**

**CHAPTER 77**  
**ENGINE INDICATING**

Subject/Page	Date	Subject/Page	Date	Subject/Page	Date
EFFECTIVE PAGES					
1	Sep 20/2008				
2	BLANK				
77-CONTENTS					
1	Sep 20/2006				
2	BLANK				
77-10-01					
1	Sep 20/2006				
2	BLANK				
77-10-02					
1	Sep 20/2006				
2	Sep 20/2006				
77-30-01					
1	Sep 20/2006				
2	Sep 20/2006				
77-30-02					
1	Sep 20/2006				
2	BLANK				

A = Added, R = Revised, O = Overflow, D = Deleted

## 77-EFFECTIVE PAGES

Page 1  
Sep 20/2008

D634N501



**757**  
**ILLUSTRATED TOOL AND EQUIPMENT MANUAL**

**TABLE OF CONTENTS**

<b><u>Subject</u></b>	<b><u>Title</u></b>	<b><u>Part No.</u></b>
<b>77-</b>	<b>ENGINE INDICATING</b>	
77-10-02	JUMPER TEST WIRE - ENGINE SPEED CARD (ENGINE RUN SIMULATION)	B21003-1
77-30-01	TEST BOX - POWER SUPPLY, ELECTRONIC ENGINE CONTROL MONITOR	A77001-1
77-30-02	TEST BOX - GENERIC AIRBORNE VIBRATION MONITOR (AVM) INTERFACE	C77004-10

# 77-CONTENTS



**757**

**ILLUSTRATED TOOL AND EQUIPMENT MANUAL**

**PART NUMBER: B71034-63 WAS MOVED TO 71-00-33**



**757**

## **ILLUSTRATED TOOL AND EQUIPMENT MANUAL**

**PART NUMBER: B21003-1**

**NAME:** JUMPER TEST WIRE - ENGINE SPEED CARD (ENGINE RUN SIMULATION)

**AIRPLANE MAINTENANCE:** YES

**COMPONENT MAINTENANCE:** NO

**USAGE & DESCRIPTION:** The B21003-1 jumper test wire has a limited usage on 757-200 airplanes equipped with the S283N901-4 or -6 engine speed card. The S283N901-4 or -6 engine speed card is typically found on 757 line numbers 1 thru 577. The jumper wire is used to simulate an engine running condition by providing connections between the engine speed card test pin and the electrostatic ground jack.

Refer to AMM 21-58-05, AMM 21-58-06, AMM 21-58-10 and 77-12-03 for airplanes equipped with RB211 engines for complete usage instructions.

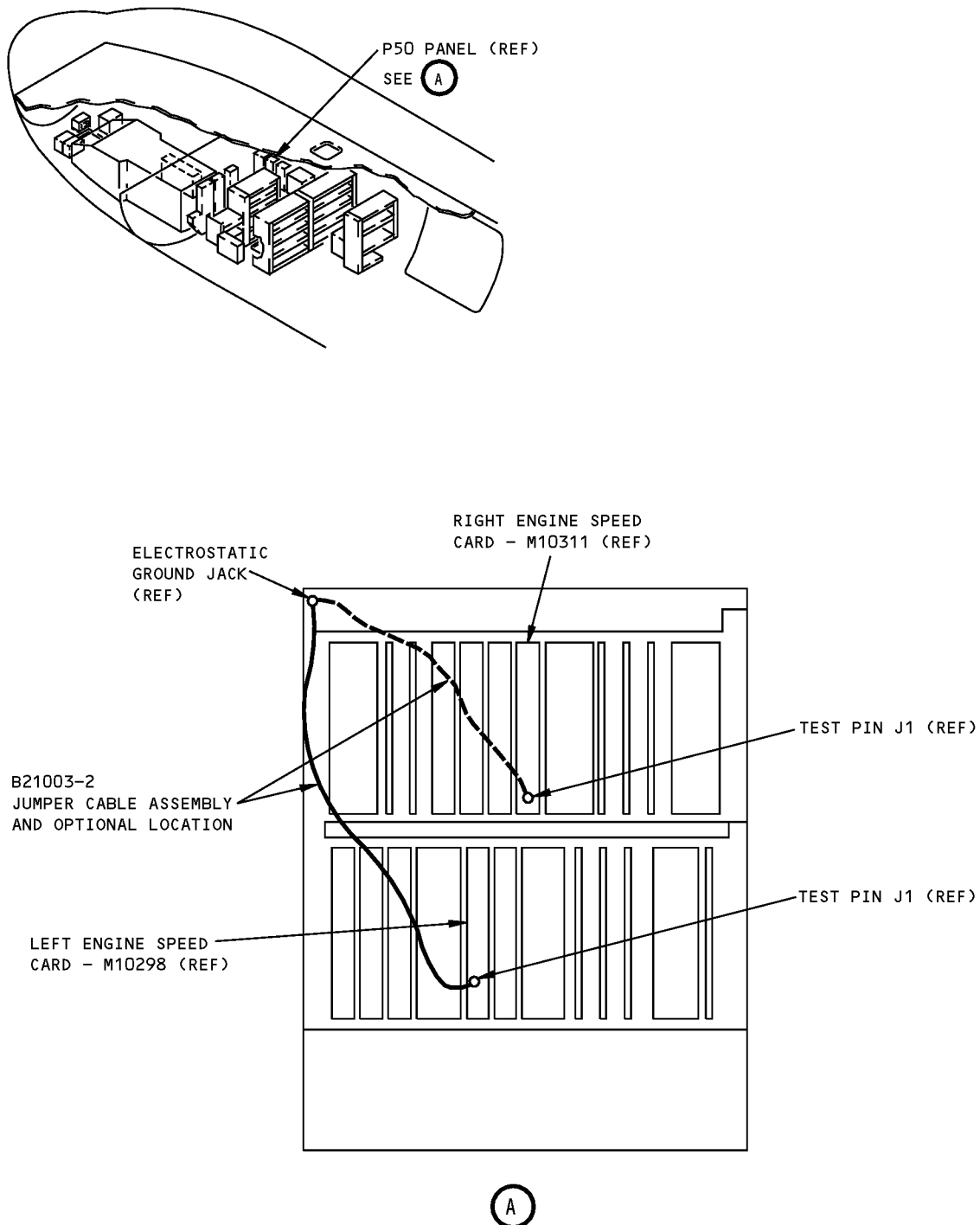
Refer to AMM 21-58-05, AMM 21-58-06, AMM 21-58-10, AMM 21-58-15 and 77-12-01 for airplanes equipped with PW2000 engines for complete usage instructions.

B21003-1 consists of a B21003-2 jumper cable assembly contained in a storage box.

**WEIGHT:** 1 lb (0.45 kg)

**DIMENSIONS:** 2 x 2 x 3 inches (51 x 51 x 76 mm)

**757**  
**ILLUSTRATED TOOL AND EQUIPMENT MANUAL**



**Engine Speed Card (Engine Run Simulation) Jumper Test Wire**  
**Figure 1**



**757**  
**ILLUSTRATED TOOL AND EQUIPMENT MANUAL**

**PART NUMBER: A77001-1**

**NAME:** TEST BOX - POWER SUPPLY, ELECTRONIC ENGINE CONTROL MONITOR

**AIRPLANE MAINTENANCE:** NO

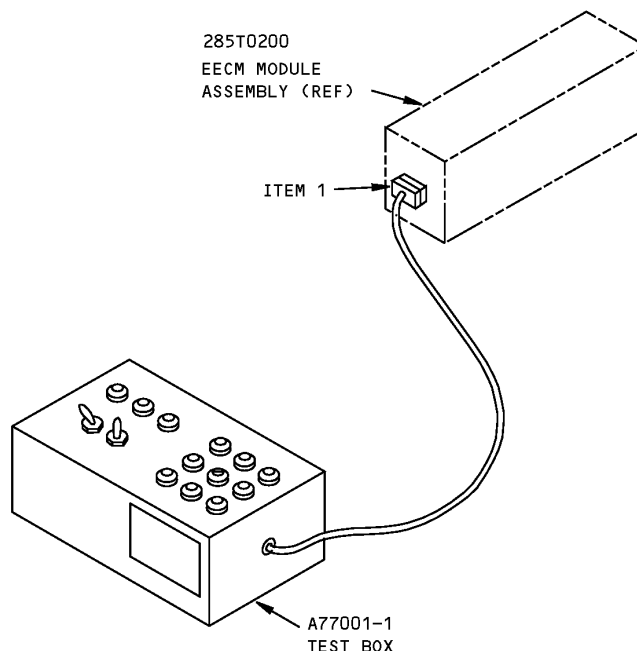
**COMPONENT MAINTENANCE:** YES

**USAGE & DESCRIPTION:** The A77001 drawing has been transferred to BAE Systems and will no longer be revised by Boeing. The A77001 inclusion in the 757 ITEM is for information and historical purposes only.

The A77001-1 test box is used during component maintenance on 757-200 or -200F airplanes equipped with Pratt and Whitney engines. A77001 is used to functionally test the 285T0200-2,-3,-6,-8 electronic engine control monitor module power supply assembly. A77001 is used in conjunction with a 115 VAC, 400 Hz, 5 Amp power supply and a Fluke 8120A digital multimeter. Refer to CMM 77-35-06 for complete usage instructions. A77001-1 consists of switches, resistors, banana jacks, a connector and electrical circuitry mounted on a panel and chassis assembly.

**WEIGHT:** 2 lbs (0.9 kg)

**DIMENSIONS:** 3 x 6 x 8 inches (76 x 152 x 203 mm)



**Electronic Engine Control Monitor Power Supply Test Box**  
**Figure 1**



**757**

**ILLUSTRATED TOOL AND EQUIPMENT MANUAL**

REPAIRABLE/REPLACEABLE PARTS			
ITEM NO.	PART NO.	NOMENCLATURE	VENDOR CODE
1	DAMA-15S	CONNECTOR	V71468



# 757 ILLUSTRATED TOOL AND EQUIPMENT MANUAL

**PART NUMBER: C77004-10**

**NAME:** TEST BOX - GENERIC AIRBORNE VIBRATION MONITOR (AVM) INTERFACE

**AIRPLANE MAINTENANCE:** YES

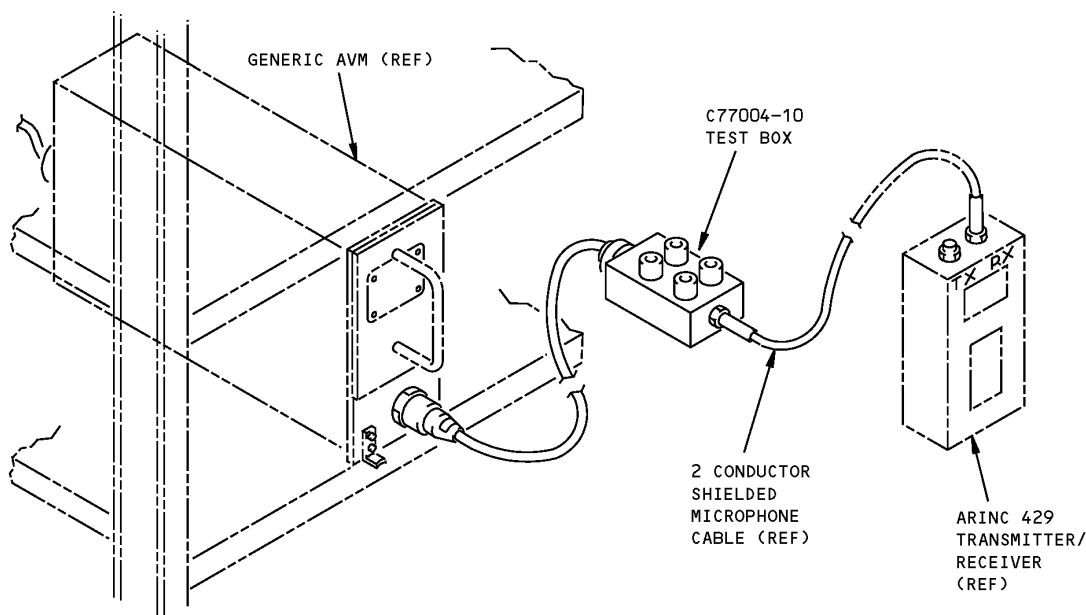
**COMPONENT MAINTENANCE:** NO

**USAGE & DESCRIPTION:** The C77004-10 test box is used on 757 airplanes equipped with S360N021 AVM units. C77004 provides an interface between a customer-furnished ARINC 429 analyzer and the S360N021 AVM unit. Refer to the current C77004 drawing for complete usage instructions. C77004-10 consists of a C77004-11 test box assembly contained in a storage box.

**WEIGHT:** 3 lbs (1.4 kg)

**DIMENSIONS:** 2 x 5 x 8 inches (51 x 127 x 203 mm)

**NOTE:** C77004-10 supersedes C77004-1.



**Generic AVM Interface Test Box  
Figure 1**