

GPA Group plc

PAGE	DATE	CODE	PAGE	DATE	CODE	PAGE	DATE	CODE
CHAPTER 8 TAB								
LEVELING AND WEIGHING								
EFFECTIVE PAGES SEE LAST PAGE OF LIST FOR NUMBER OF PAGES								
08-CONTENTS								
1	DEC 20/96	GUI						
2	BLANK							
08-21-00								
201	DEC 20/95	01						
202	DEC 15/82	01						
203	SEP 28/01	02						
204	BLANK							
08-31-00								
201	SEP 20/98	01						
202	BLANK							

R = REVISED, A = ADDED OR D = DELETED  
F = FOLDOUT PAGE  
32  
JAN 20/09

**D633N132**

CHAPTER 08  
EFFECTIVE PAGES  
PAGE 1  
LAST PAGE

CHAPTER 08 - LEVELING & WEIGHING

TABLE OF CONTENTS

<u>Subject</u>	<u>Chapter Section Subject</u>	<u>Page</u>	<u>Effectivity</u>
<u>LEVELING AND WEIGHING</u>	08-00-00		
<u>LEVELING</u>	08-20-00		
LEVELING	08-21-00		
Maintenance Practices		201	ALL
<u>WEIGHING</u>	08-30-00		
WEIGHING	08-31-00		
Maintenance Practices		201	ALL

# 08-CONTENTS

LEVELING - MAINTENANCE PRACTICES

1. General

- A. The level indicator for the airplane is a plumb bob leveling scale. It is attached to the keel beam in the right main wheel well (Fig. 201). This indicator is used with a plumb bob attached to a fitting above the scale. It is used to level the airplane for general maintenance.
- B. For small adjustments to make the airplane level, the landing gear shock struts are inflated or deflated as necessary. For larger adjustments, the airplane must be lifted on jacks.
- C. To accurately level the airplane for symmetry checks, see the Structural Repair Manual, SRM 51-50-00.
- D. Procedures to weigh the airplane are included in the airplane Weight and Balance Manual.

TASK 08-21-00-582-001

2. Leveling the Airplane

- A. Equipment
  - (1) Door Locks, Landing Gear - (AMM 32-00-15)
  - (2) Plumb bob and applicable cord - commercially available
- B. References
  - (1) AMM 07-11-01/201, Jacking Airplane
  - (2) AMM 10-11-01/201, Normal Parking
  - (3) AMM 12-15-01/301, Main Gear Shock Strut
  - (4) AMM 12-15-02/301, Nose Gear Shock Strut
  - (5) AMM 32-00-15/201, Landing Gear Door Locks
  - (6) AMM 32-00-20/201, Landing Gear Downlocks
- C. Prepare to Level the Airplane

S 582-002

- (1) Park the airplane in a level position. The airplane must be very level before you do this procedure (AMM 10-11-01).

S 492-003

- (2) Make sure the downlocks are installed on the nose and main landing gear (AMM 32-00-20).

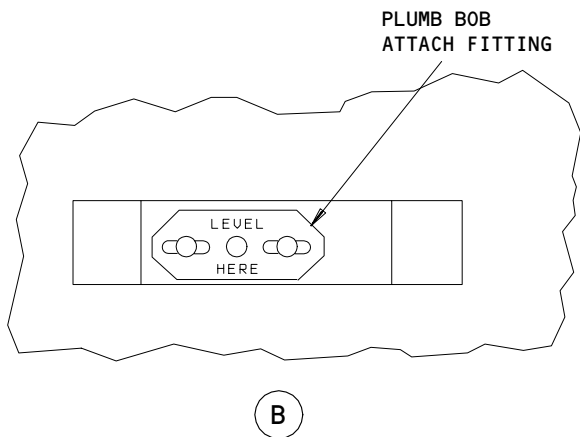
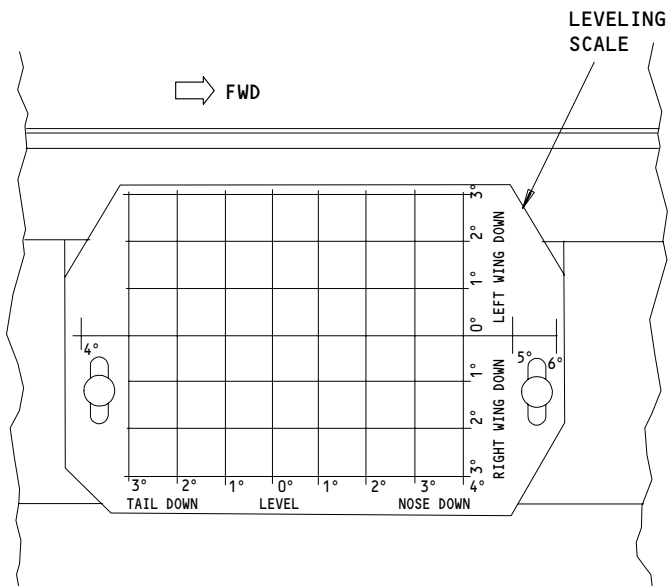
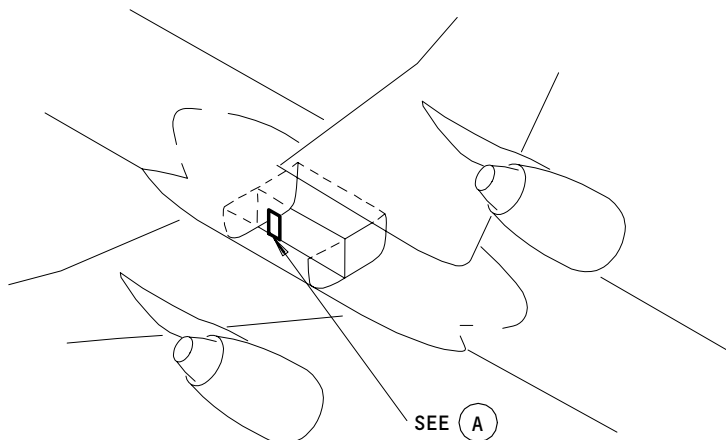
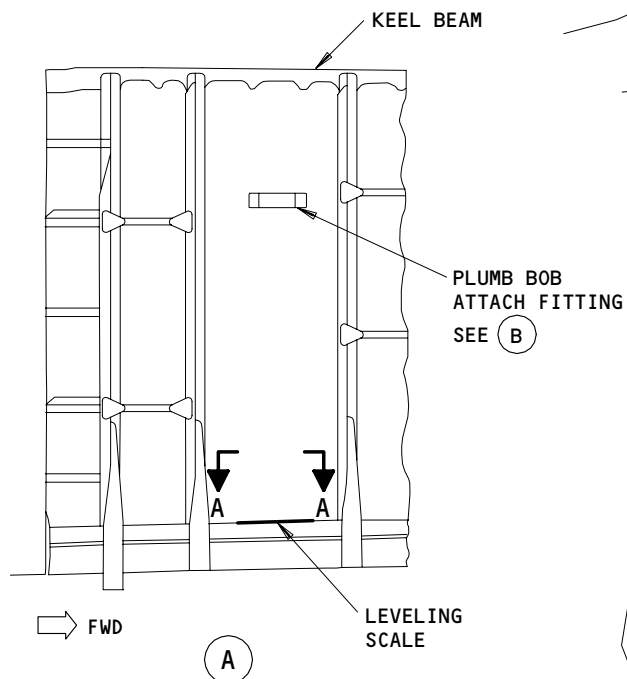
EFFECTIVITY

ALL

08-21-00

01

Page 201  
Dec 20/95



Airplane Plumb Bob and Leveling Scale  
Figure 201

EFFECTIVITY

ALL

08-21-00

01

Page 202  
Dec 15/82

53381

S 492-004

**WARNING:** USE THE PROCEDURE IN AMM 32-00-15/201 TO INSTALL THE DOOR LOCKS. THE DOORS OPEN AND CLOSE QUICKLY AND CAN CAUSE INJURY TO PERSONS OR DAMAGE TO EQUIPMENT.

- (3) Open the doors for the landing gear and install the door locks (AMM 32-00-15).

D. Procedure

S 482-005

- (1) Hang the plumb bob on the fitting that is attached in the right main wheel well (Fig. 201). The plumb bob fitting bracket is attached to the keel beam structure, directly above the leveling scale.

S 822-006

- (2) Look at the position of the plumb bob when it has stopped its movement. When the plumb bob is not over zero degree mark on the leveling scale, make the airplane level. Use one of the procedures that follows:

(a) Inflate or deflate the applicable landing gear shock struts until the plumb bob is at zero degrees.

- 1) Adjust the shock strut of the main landing gear as necessary (AMM 12-15-01).
- 2) Adjust the shock strut of the nose landing gear as necessary (AMM 12-15-02).

S 582-007

- (3) Lift the airplane on jacks until the plumb bob is at zero degrees (AMM 07-11-01).

E. Put the Airplane Back to Its Initial Condition

S 582-010

- (1) Lower the airplane off of the jacks (AMM 07-11-01).

S 412-011

**WARNING:** USE THE PROCEDURE IN AMM 32-00-15/201 TO REMOVE THE DOOR LOCKS. THE DOORS OPEN AND CLOSE QUICKLY AND CAN CAUSE INJURY TO PERSONS OR DAMAGE TO EQUIPMENT.

- (2) Remove the door locks from the landing gear doors and close the doors (AMM 32-00-15).

EFFECTIVITY

ALL

08-21-00

02

Page 203  
Sep 28/01

WEIGHING - MAINTENANCE PRACTICES

TASK 08-31-00-282-001

1. Weighing

A. General

- (1) Refer to the Weight and Balance Manual for procedures to prepare the airplane to be weighed.
- (2) Refer to the Weight and Balance Manual for procedures to weigh the airplane.

EFFECTIVITY

ALL

08-31-00

01

Page 201  
Sep 20/98