

**CHAPTER**

**25**

**EQUIPMENT / FURNISHINGS**



CHAPTER 25  
EQUIPMENT / FURNISHINGS

CH-SC-SU	Schem	Page	Sheet	Date	CH-SC-SU	Schem	Page	Sheet	Date
25-EFFECTIVE PAGES					25-31-05		101		Jan 21/2005
		1 thru 2		Oct 09/2008					
25-CONTENTS					25-31-07		101		Jan 21/2005
R		1		Oct 09/2008					
		2		Dec 18/2007	25-31-08		101		Jan 21/2005
25-ALPHABETICAL INDEX									
		1		Dec 18/2007	25-31-09		101		Jan 21/2005
		2		BLANK					
25-29-01					R		101		Oct 09/2008
		101		Dec 18/2007	R		102		Oct 09/2008
		102		Dec 18/2007	R		103	1	Oct 09/2008
25-31-00								2	Jan 21/2005
		101		Jan 21/2005				3	Jan 21/2005
		102		Jan 21/2005	25-41-01				
25-31-01							101		Jan 21/2005
		101		Jan 21/2005			102		Jan 21/2005
		102		Dec 18/2007	25-41-02				
25-31-02							101		Jan 21/2005
		101		Jan 21/2005			102		Jan 21/2005
		102		Jan 21/2005	25-41-03				
25-31-04							101		Jan 21/2005
		101		Jan 21/2005	25-41-04				
		102	1	Jan 21/2005			101		Jan 21/2005
			2	Jan 21/2005	25-41-05				
							101		Jan 21/2005

A = Added, R = Revised, D = Deleted, O = Overflow

25-EFFECTIVE PAGES



CHAPTER 25  
EQUIPMENT / FURNISHINGS

CH-SC-SU	Schem	Page	Sheet	Date	CH-SC-SU	Schem	Page	Sheet	Date
25-51-01		101		Jan 21/2005					
25-51-02		101		Jan 21/2005					
25-66-01		101		Jan 21/2005					

A = Added, R = Revised, D = Deleted, O = Overflow

**25-EFFECTIVE PAGES**

Page 2  
Oct 09/2008

D280N032S



CHAPTER 25  
EQUIPMENT / FURNISHINGS

Title	CH-SC-SU	Schem	Page	Sheet	Date	Effectivity
<b><u>PASSENGER AND CABIN ATTENDANT ACCOMMODATIONS</u></b>						
SERVICE OUTLETS	25-29-01		101		Dec 18/2007	001-099
			102		Dec 18/2007	115-199
<b><u>GALLEYS</u></b>						
GALLEY ARRANGEMENT	25-31-00		101		Jan 21/2005	001-099
			102		Jan 21/2005	115-199
FORWARD GALLEY POWER (G1A)	25-31-01		101		Jan 21/2005	001-099
			102		Dec 18/2007	115-199
FORWARD GALLEY 2 (G1B)	25-31-02		101		Jan 21/2005	001-003 005 007-099
			102		Jan 21/2005	004 006
MID FORWARD GALLEY (G2A)	25-31-04		101		Jan 21/2005	001-099
			102	1	Jan 21/2005	115-199
				2	Jan 21/2005	115-199
AFT GALLEY POWER (G2B)	25-31-05		101		Jan 21/2005	115-199
LEFT MID AFT GALLEY (G2D)	25-31-07		101		Jan 21/2005	115-199
AFT GALLEY 2 (G4A)	25-31-08		101		Jan 21/2005	001-099
AFT GALLEY 1 (G4B)	25-31-09		101		Oct 09/2008	001-008 010-099
			102		Oct 09/2008	009
			103	1	Oct 09/2008	115-199
				2	Jan 21/2005	115-199
				3	Jan 21/2005	115-199
<b><u>LAVATORIES</u></b>						
LAVATORY MODULE LOCATIONS	25-41-01		101		Jan 21/2005	001-099

**CHAPTER 25  
EQUIPMENT / FURNISHINGS**

Title	CH-SC-SU	Schem	Page	Sheet	Date	Effectivity
LAVATORY MODULE LOCATIONS (cont.)	25-41-01		102		Jan 21/2005	115-199
FORWARD LAVATORY MODULE	25-41-02		101		Jan 21/2005	001-099
			102		Jan 21/2005	115-199
FORWARD LAVATORY F MODULE	25-41-03		101		Jan 21/2005	115-199
MID - FWD LAVATORY MODULES	25-41-04		101		Jan 21/2005	001-099
MID LAVATORY MODULES	25-41-05		101		Jan 21/2005	ALL
<b><u>CARGO LOADER SYSTEM</u></b>						
CARGO LOADER SYSTEM - AFT CARGO COMPARTMENT	25-51-01		101		Jan 21/2005	115-199
CARGO LOADER SYSTEM - FORWARD CARGO COMPARTMENT	25-51-02		101		Jan 21/2005	115-199
<b><u>DOOR-MOUNTED ESCAPE SYSTEM</u></b>						
DOOR GIRT BAR ENGAGEMENT INDICATION	25-66-01		101		Jan 21/2005	ALL



CHAPTER 25  
EQUIPMENT / FURNISHINGS

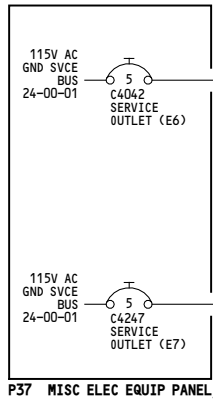
CH-SC-SU	Title
25-31-09	AFT GALLEY 1 (G4B)
25-31-08	AFT GALLEY 2 (G4A)
25-31-05	AFT GALLEY POWER (G2B)
25-51-01	CARGO LOADER SYSTEM - AFT CARGO COMPARTMENT
25-51-02	CARGO LOADER SYSTEM - FORWARD CARGO COMPARTMENT
25-66-01	DOOR GIRT BAR ENGAGEMENT INDICATION
25-31-02	FORWARD GALLEY 2 (G1B)
25-31-01	FORWARD GALLEY POWER (G1A)
25-41-03	FORWARD LAVATORY F MODULE
25-41-02	FORWARD LAVATORY MODULE
25-31-00	GALLEY ARRANGEMENT
25-41-01	LAVATORY MODULE LOCATIONS
25-31-07	LEFT MID AFT GALLEY (G2D)
25-41-04	MID - FWD LAVATORY MODULES
25-31-04	MID FORWARD GALLEY (G2A)
25-41-05	MID LAVATORY MODULES
25-29-01	SERVICE OUTLETS

CH-SC-SU	Title
----------	-------

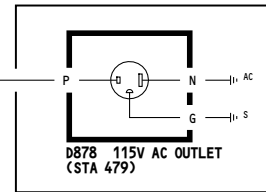
**25-ALPHABETICAL INDEX**

-D  
5012

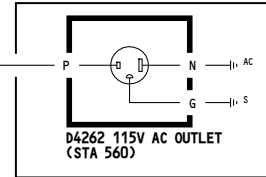
WIRING DIAGRAMS  
25-29-11



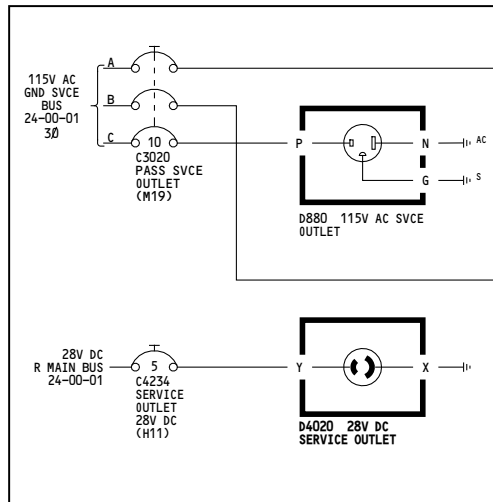
P37 MISC ELEC EQUIP PANEL, R



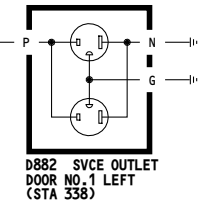
E3 EQUIPMENT RACK



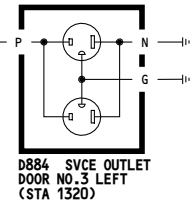
E5 EQUIPMENT RACK



P6 MAIN POWER DISTR PANEL



D882 SVCE OUTLET DOOR NO.1 LEFT (STA 338)



D884 SVCE OUTLET DOOR NO.3 LEFT (STA 1320)

001-099	<p align="center"><b>SERVICE OUTLETS</b></p> <p align="center">D280N032S</p>
---------	--

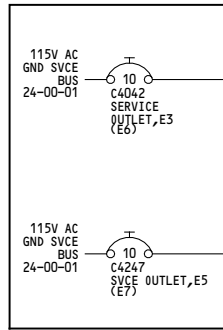
**25-29-01**

Page 101

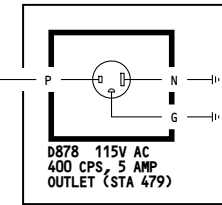
Dec 18/2007

5011

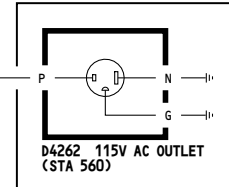
WIRING DIAGRAMS  
25-29-11



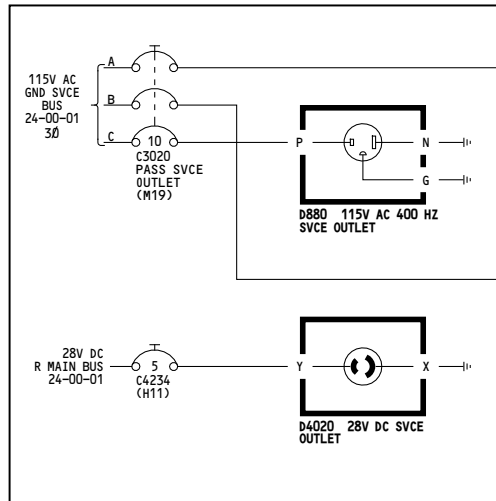
P37 MISC RLY PNL RIGHT



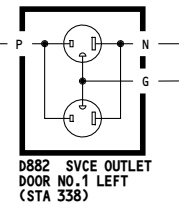
E3 EQUIPMENT RACK



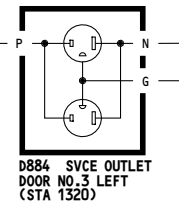
E5 EQUIPMENT RACK



P6 MAIN CIRCUIT BREAKER PANEL



D882 SVCE OUTLET DOOR NO. 1 LEFT (STA 338)



D884 SVCE OUTLET DOOR NO. 3 LEFT (STA 1320)

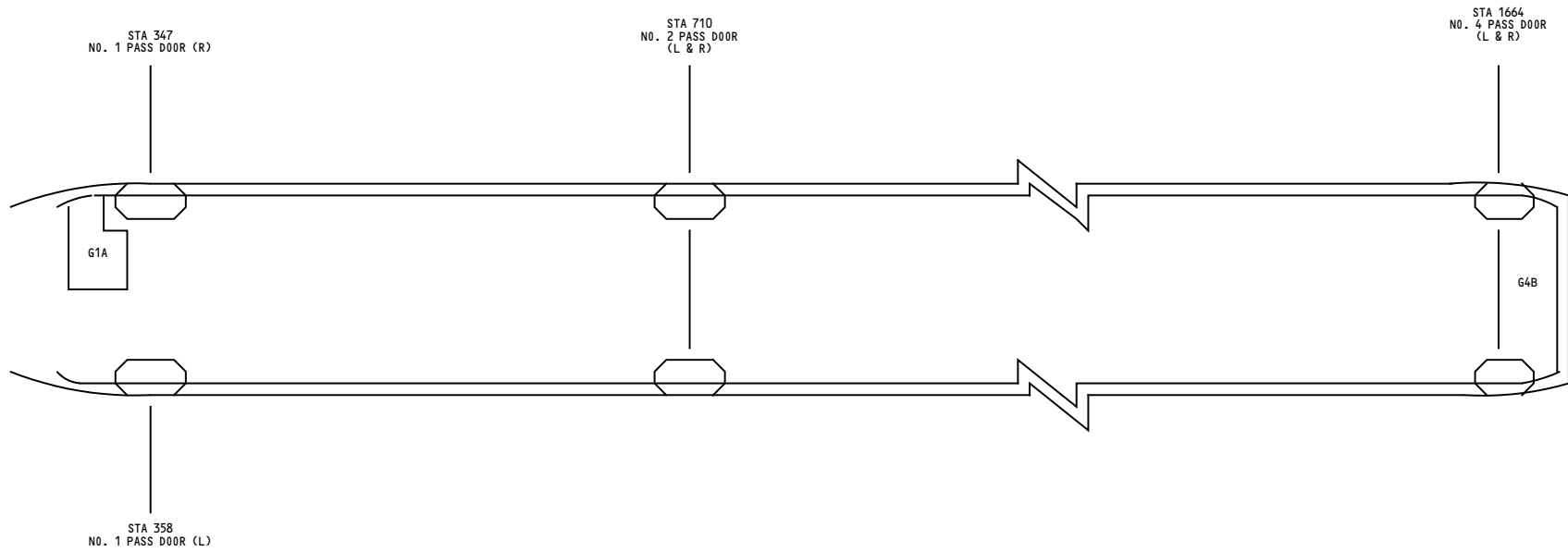
115-199	<p align="center"><b>SERVICE OUTLETS</b></p> <p align="center">D280N032S</p>
---------	--

**25-29-01**

Page 102

Dec 18/2007



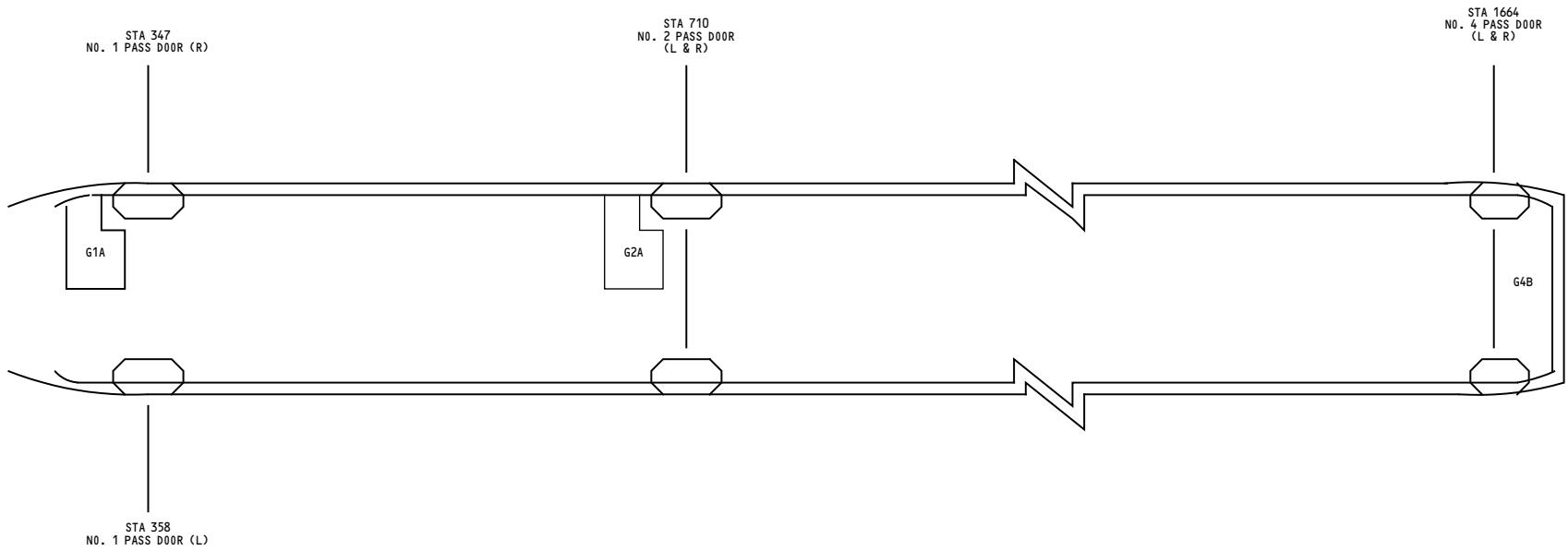


001-099	<b>GALLEY ARRANGEMENT</b>  D280N032S
---------	--

**25-31-00**

Page 101

Jan 21/2005



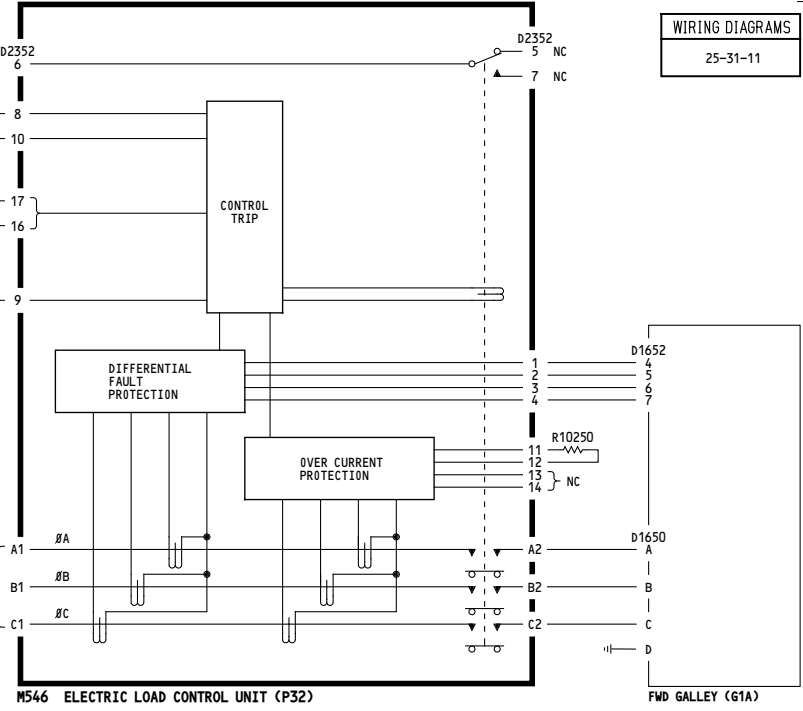
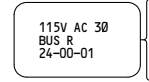
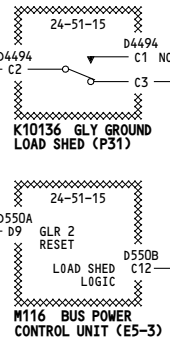
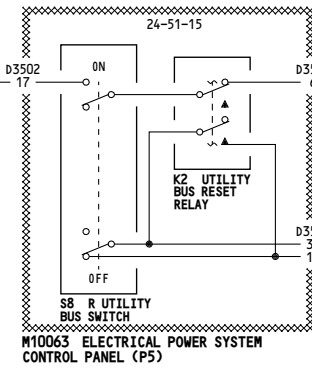
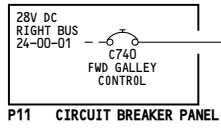
115-199	<b>GALLEY ARRANGEMENT</b>  D280N032S
---------	--

**25-31-00**

Page 102

Jan 21/2005

-A  
5022



WIRING DIAGRAMS  
25-31-11

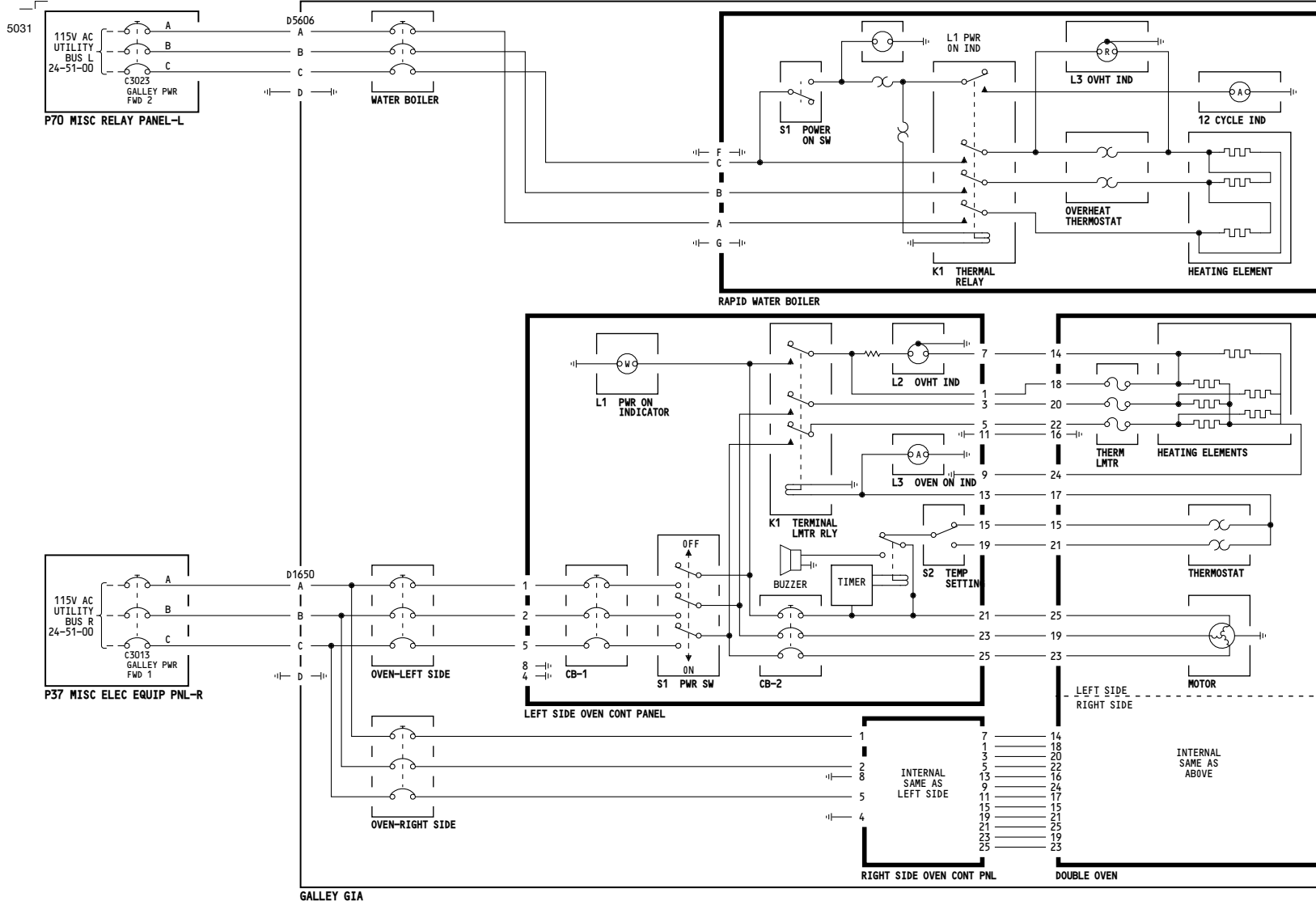
001-099	<p align="center"><b>FORWARD GALLEY POWER (G1A)</b></p> <p align="center">D280N032S</p>
---------	---

**25-31-01**

Page 101

Jan 21/2005

WIRING DIAGRAMS  
25-31-11  
25-31-13

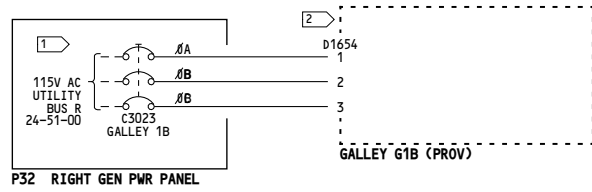


115-199	<p><b>FORWARD GALLEY POWER (G1A)</b></p> <p>D280N032S</p>
---------	---

**25-31-01**

Page 102

Dec 18/2007



**NOTES:**

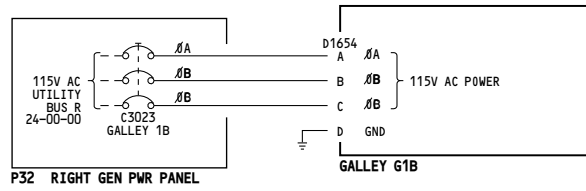
- 1 COLLAR "INOP"
- 2 CAP & STOW CONNECTOR

001-003, 005, 007-099	<p><b>FORWARD GALLEY 2 (G1B)</b></p> <p>D280N032S</p>
-----------------------	---

**25-31-02**

Page 101

Jan 21/2005



004, 006

FORWARD GALLEY 2 (G1B)

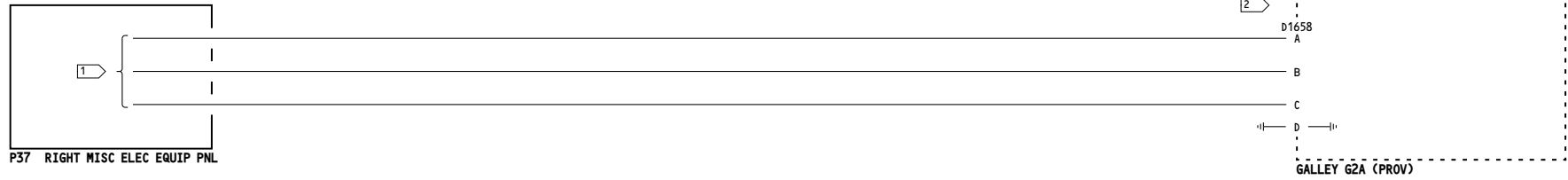
D280N032S

25-31-02

Page 102

Jan 21/2005

5014



**NOTES:**

1 STOW WIRES NEAR C/B C3023 (RESERVED FOR C3057).

2 CAPPED & STOWED.

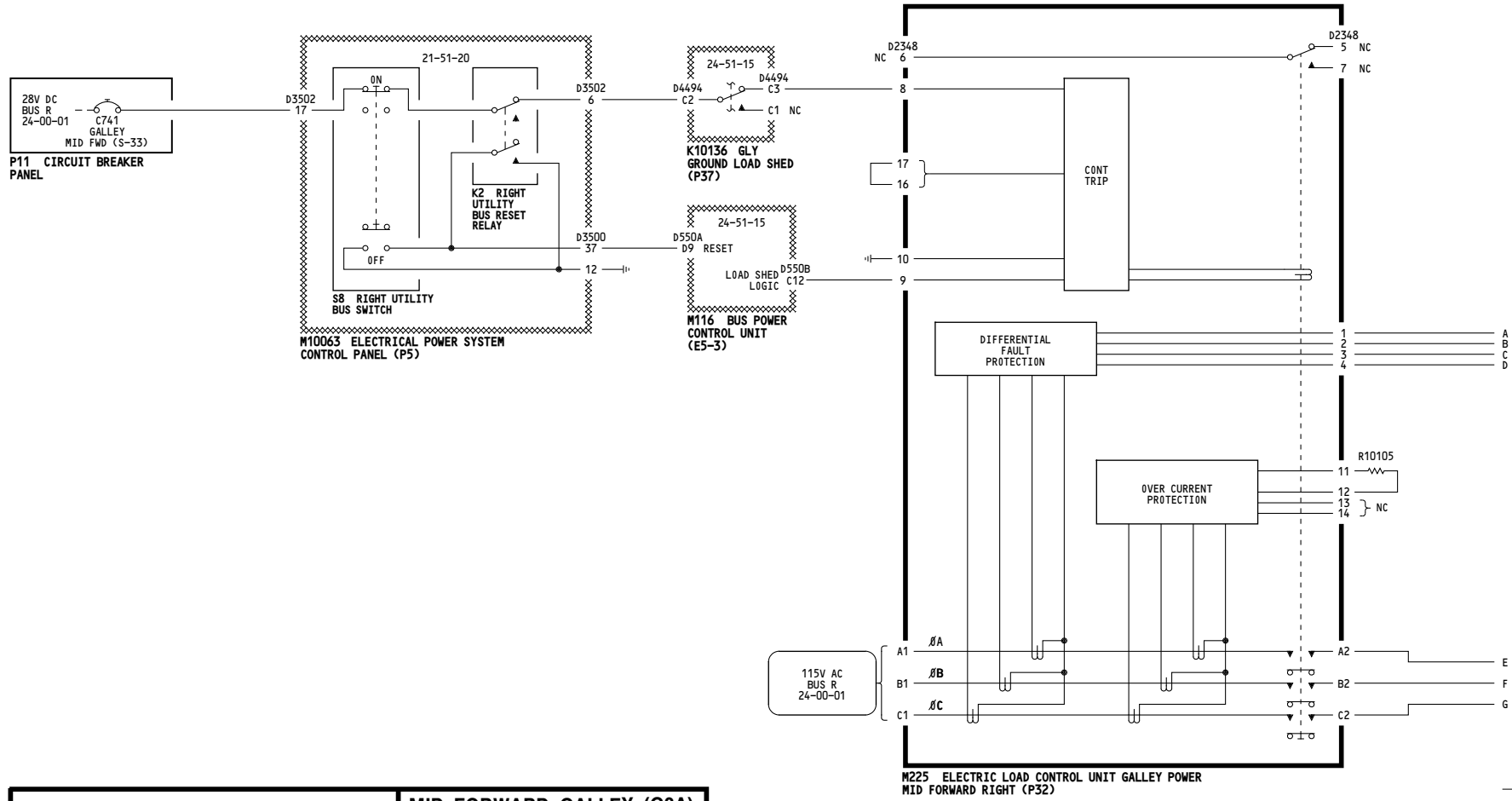
001-099	<p><b>MID FORWARD GALLEY (G2A)</b></p> <p>D280N032S</p>
---------	---

**25-31-04**

Page 101

Jan 21/2005

5012

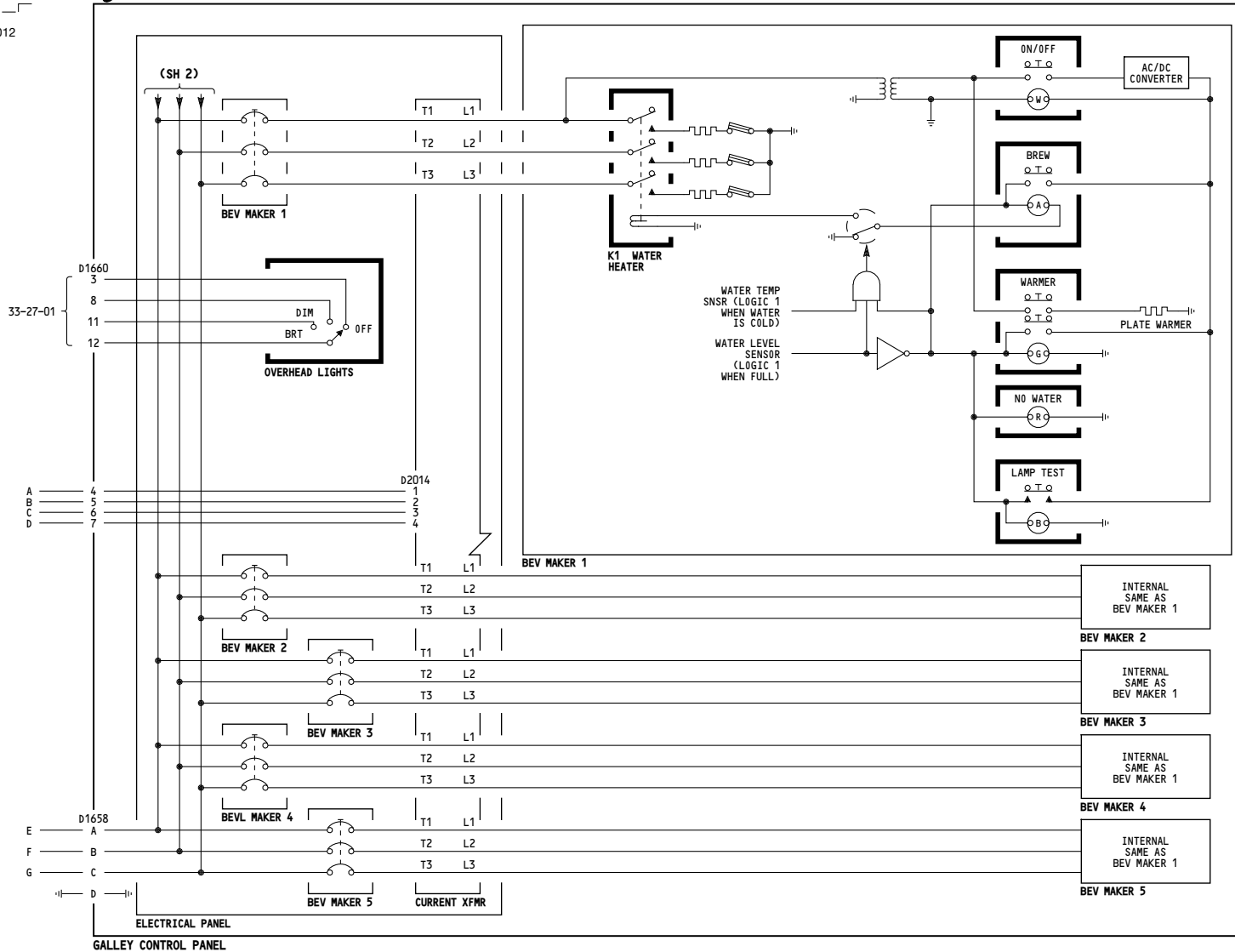


115-199	<p><b>MID FORWARD GALLEY (G2A)</b></p> <p>D280N032S</p>
---------	---

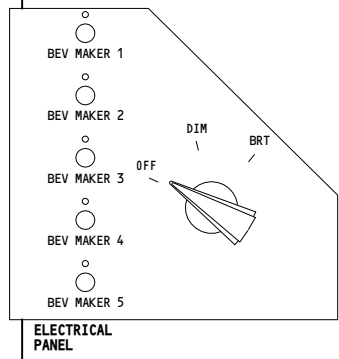
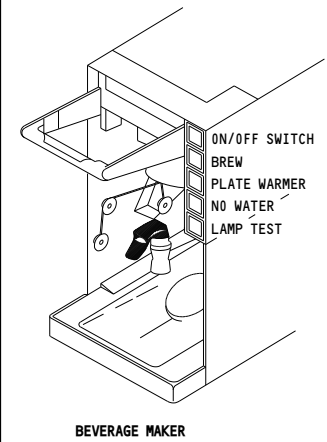
**25-31-04**



5012



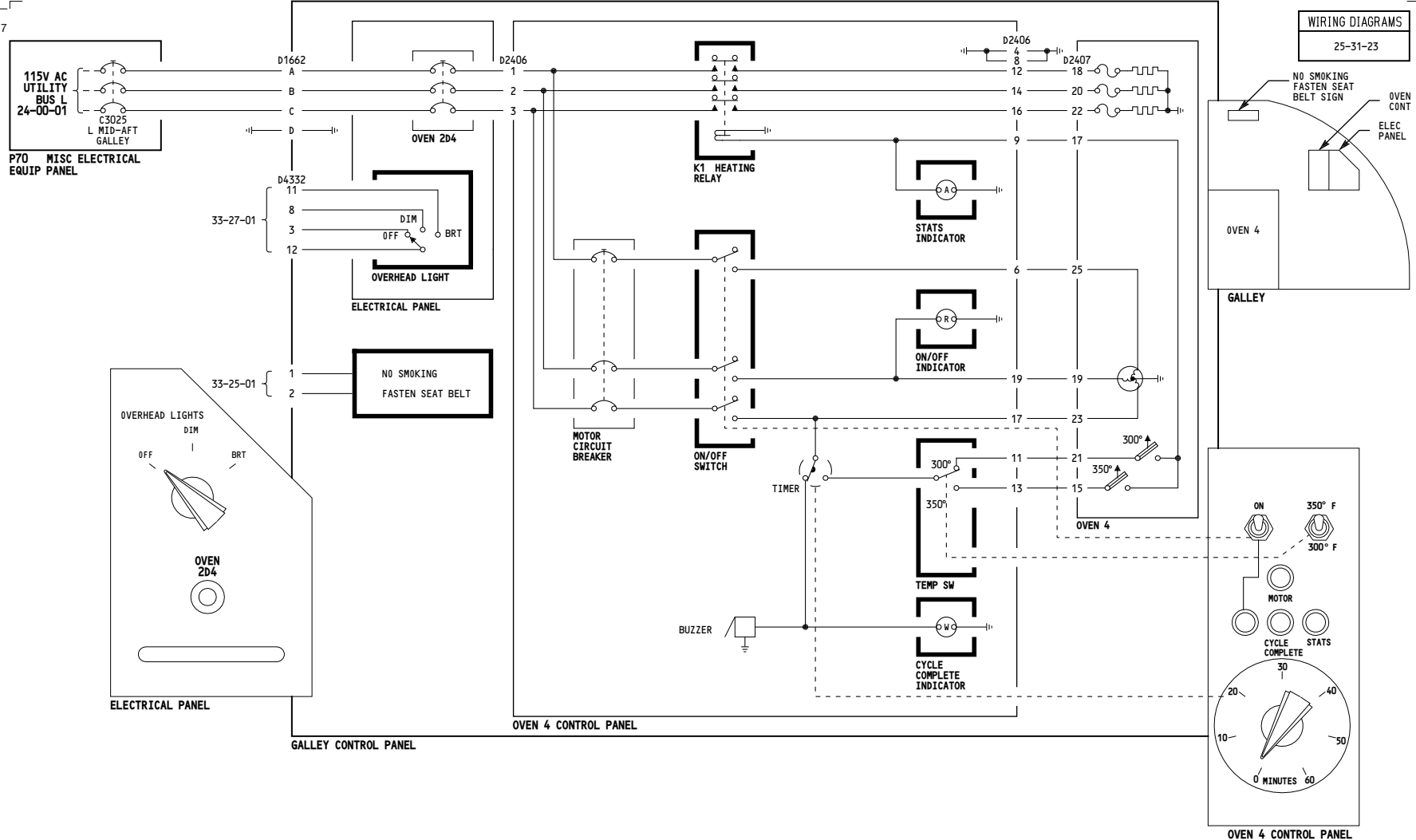
WIRING DIAGRAMS  
25-31-21



<p>115-199</p>	<p><b>MID FORWARD GALLEY (G2A)</b></p> <p>D280N032S</p>
----------------	---

**25-31-04**

5017



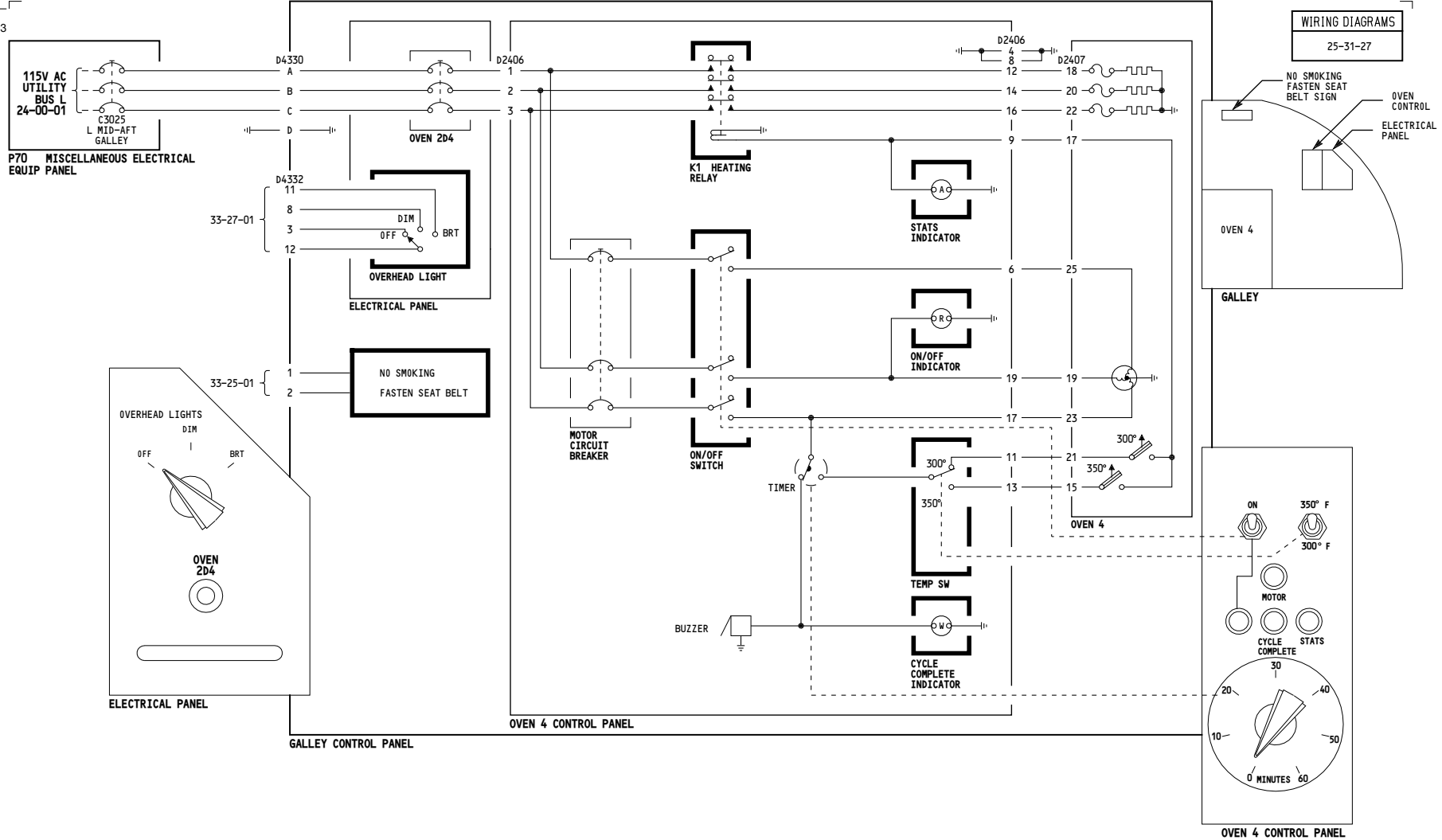
115-199	<p><b>AFT GALLEY POWER (G2B)</b></p> <p>D280N032S</p>
---------	---

**25-31-05**

Page 101

Jan 21/2005

5013



115-199

**LEFT MID AFT GALLEY (G2D)**

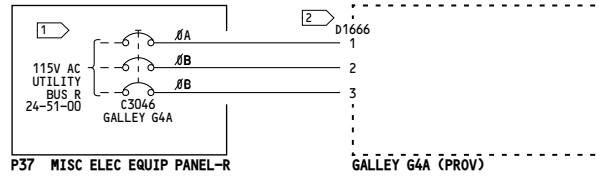
D280N032S

**25-31-07**

Page 101

Jan 21/2005

5017



NOTES:

- 1 COLLAR "INOP"
- 2 CAP & STOW CONNECTOR

001-099	<p>AFT GALLEY 2 (G4A)</p> <p>D280N032S</p>
---------	--

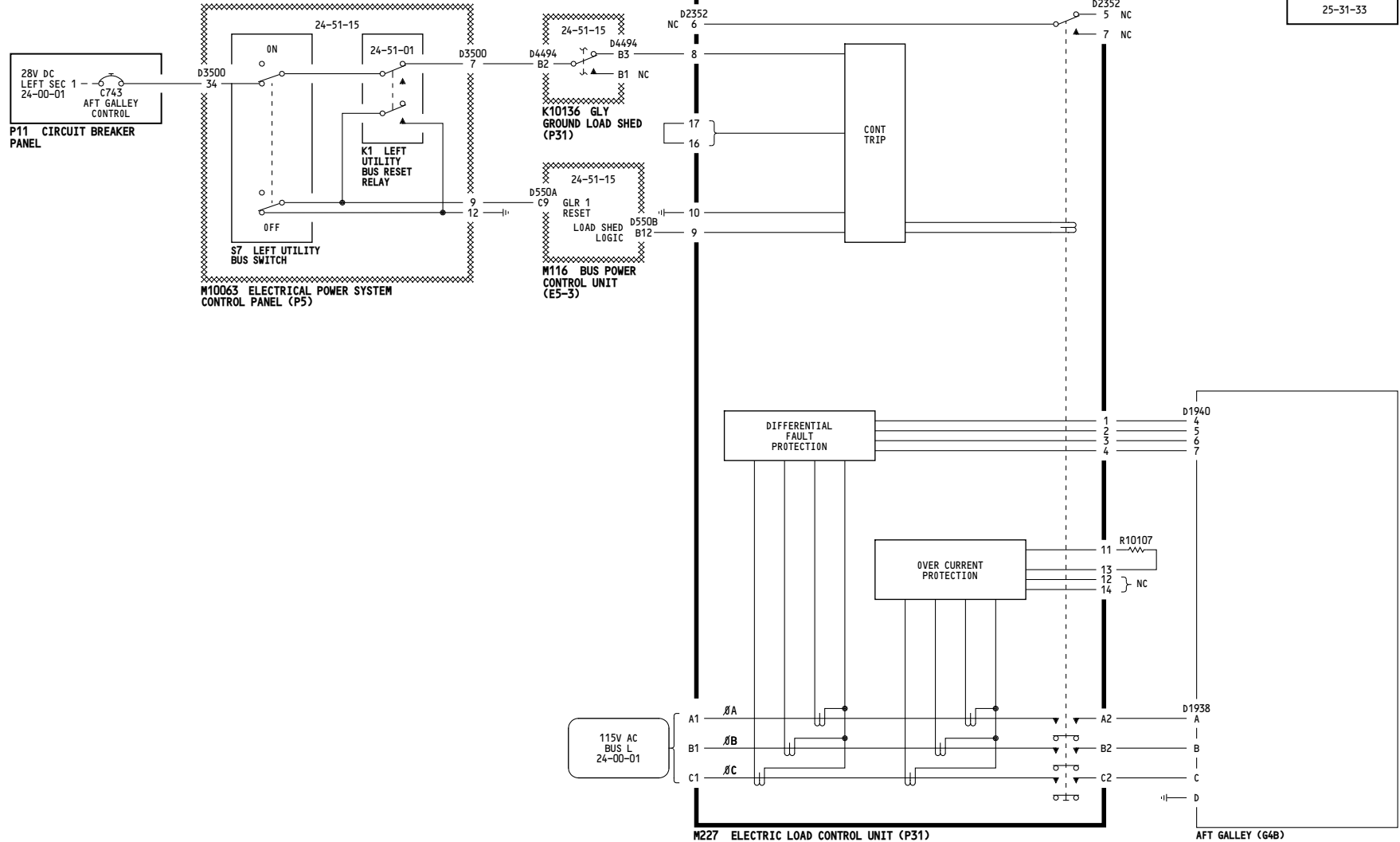
25-31-08

Page 101

Jan 21/2005

-A  
5001

WIRING DIAGRAMS  
25-31-33



001-008, 010-099	<b>AFT GALLEY 1 (G4B)</b>
	D280N032S

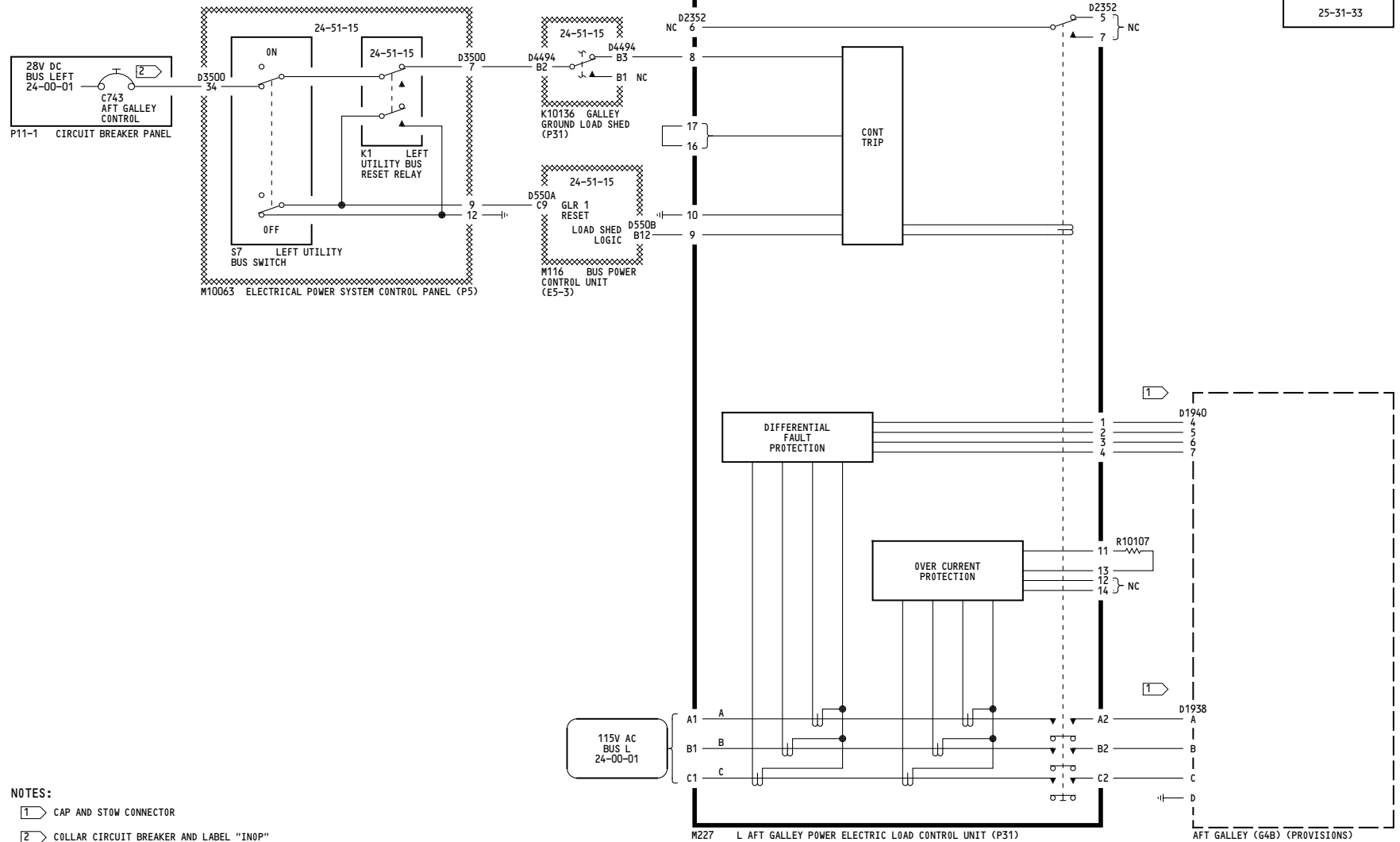
**25-31-09**

Page 101

Oct 09/2008

-A  
5009

WIRING DIAGRAMS  
25-31-33



- NOTES:
- ① CAP AND STOW CONNECTOR
  - ② COLLAR CIRCUIT BREAKER AND LABEL "INOP"

009	<b>AFT GALLEY 1 (G4B)</b>  D280N032S
-----	--

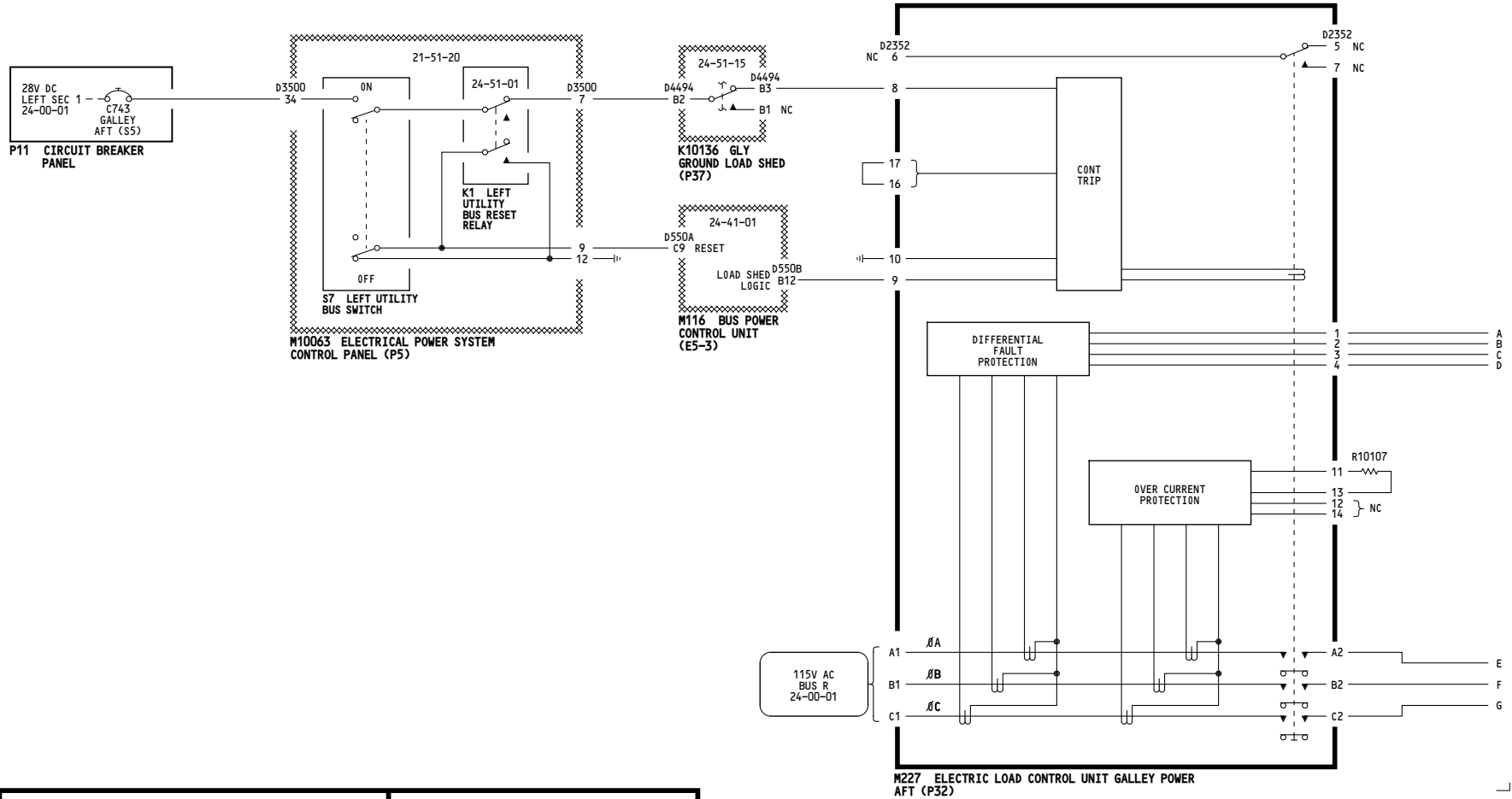
**25-31-09**

Page 102

Oct 09/2008

THIS PAGE INTENTIONALLY LEFT BLANK

-A  
5018

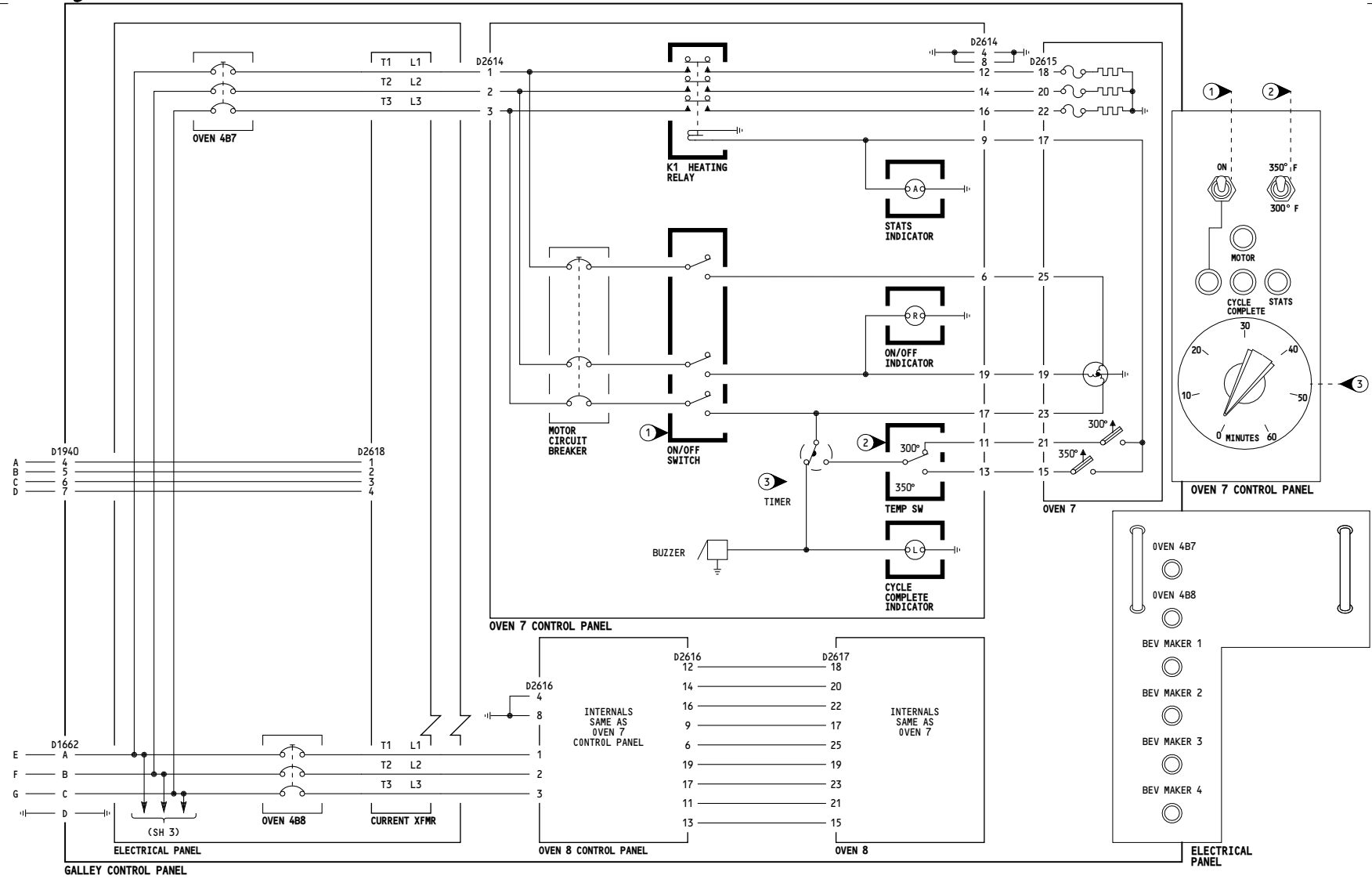


115-199	<p align="center"><b>AFT GALLEY 1 (G4B)</b></p> <p align="center">D280N032S</p>
---------	---

**25-31-09**



5018



115-199

**AFT GALLEY 1 (G4B)**

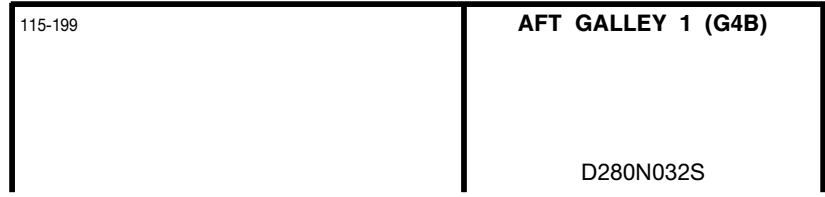
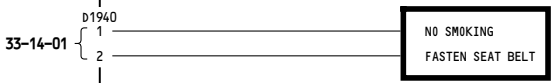
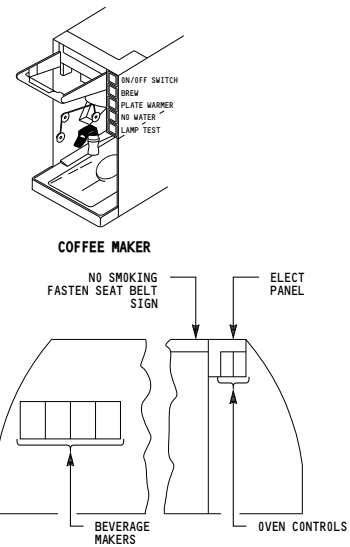
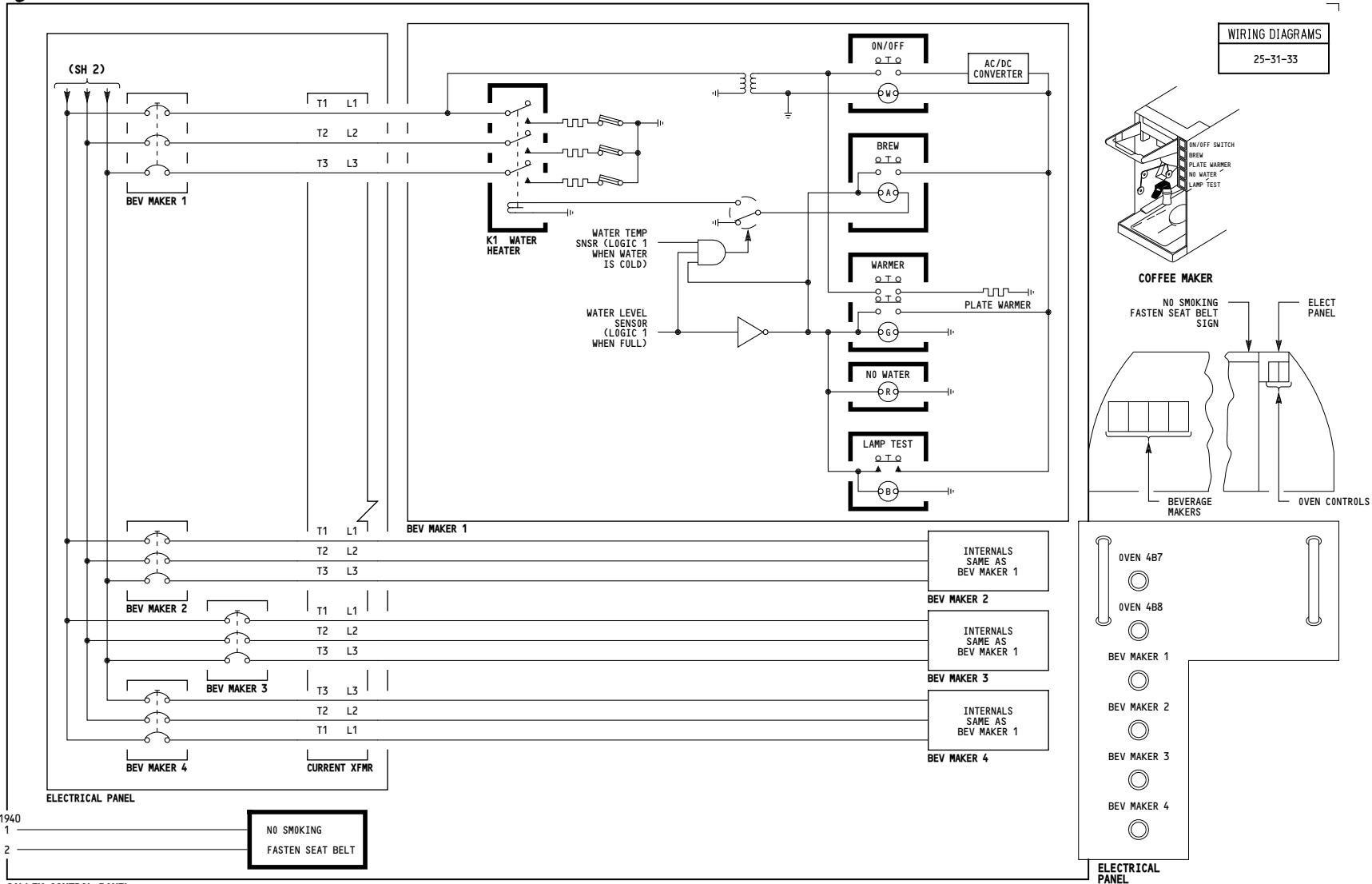
D280N032S

**25-31-09**

Page 103  
Sheet 2  
Jan 21/2005

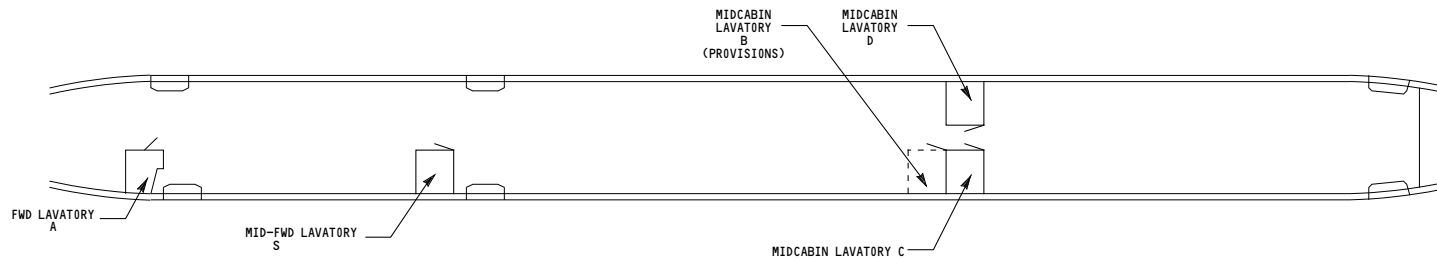
5018

WIRING DIAGRAMS  
25-31-33



**25-31-09**

TABLE I LAVATORY POSITIONS					
LAVATORY POSITION	A	S	C	D	B <sup>3</sup>
LAVATORY MODULE NO.	M10012	M10654	M10014	M10015	M10013
<sup>1</sup> LAVATORY CODE	YRH++++	YRT++++	YRK++++	YRL++++	YRJ++++
LAVATORY DISCONNECT	D42	D5690	D46	D48	D44



**NOTES:**

<sup>1</sup> TO OBTAIN LRU NUMBER OF LAVATORY EQUIPMENT, PREFIX ITEM NUMBER WITH LRU CODE IN TABLE I.  
EXAMPLE: LRU ITEM NUMBER FOR DOME LIGHT IN LAVATORY A

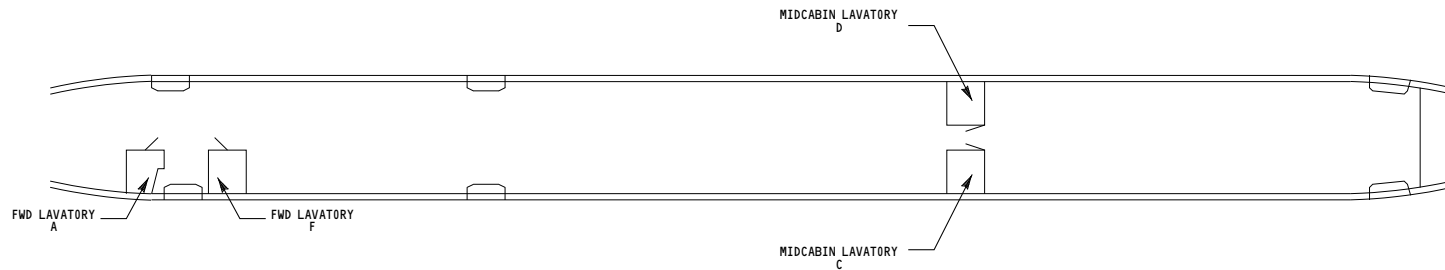


<sup>2</sup> SEE TABLE I FOR APPLICABLE LAVATORY POSITION

<sup>3</sup> PROVISIONS ONLY

001-099	<b>LAVATORY MODULE LOCATIONS</b>
	D280N032S

TABLE I LAVATORY POSITIONS				
LAVATORY POSITION	A	F	C	D
LAVATORY MODULE NO.	M10012	M10013	M10014	M10015
LAVATORY CODE	YRH++++	YRM++++	YRK++++	YRL++++
LAVATORY DISCONNECT	D42	D44	D46	D48



NOTES:

1 TO OBTAIN LRU NUMBER OF LAVATORY EQUIPMENT, PREFIX ITEM NUMBER WITH LRU CODE IN TABLE I.  
 EXAMPLE: LRU ITEM NUMBER FOR DOME LIGHT IN LAVATORY A

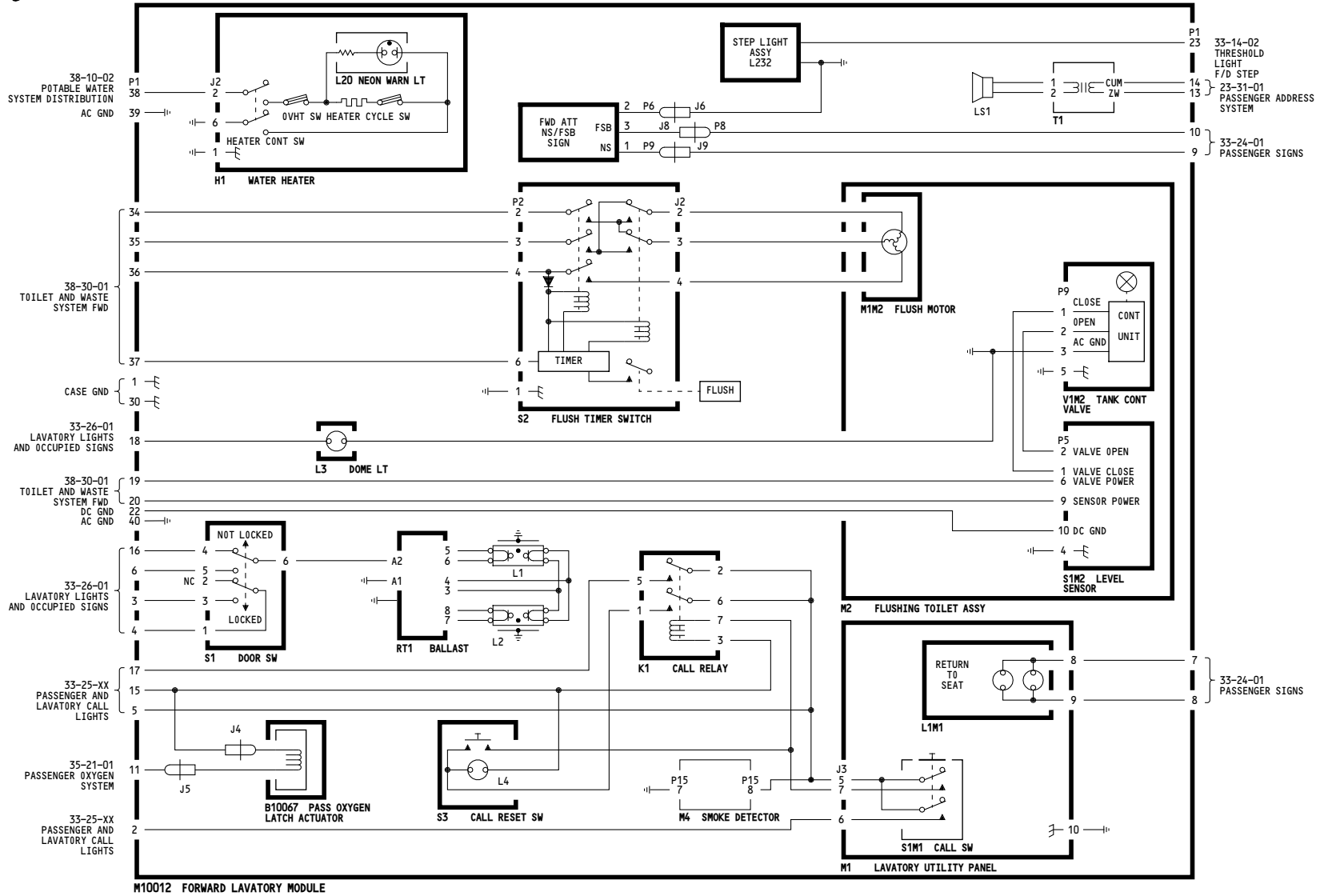


2 SEE TABLE I FOR APPLICABLE LAVATORY POSITION

3 USE MID LAVATORY WIRING FOR LAVATORY F

115-199	<b>LAVATORY MODULE LOCATIONS</b>
	D280N032S

5020



M10012 FORWARD LAVATORY MODULE

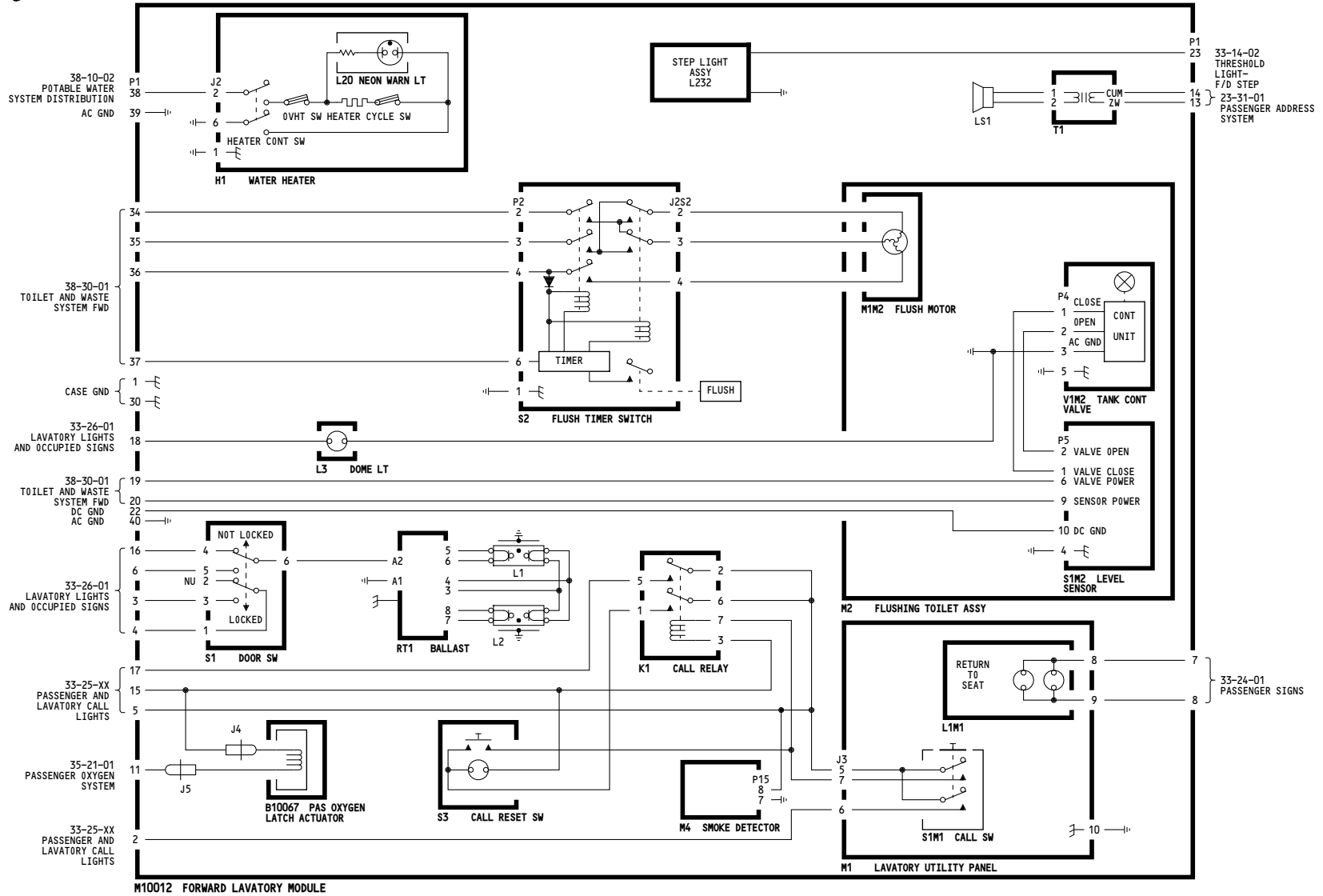
001-099	<p><b>FORWARD LAVATORY MODULE</b></p> <p>D280N032S</p>
---------	--

**25-41-02**

Page 101

Jan 21/2005

5021



M10012 FORWARD LAVATORY MODULE

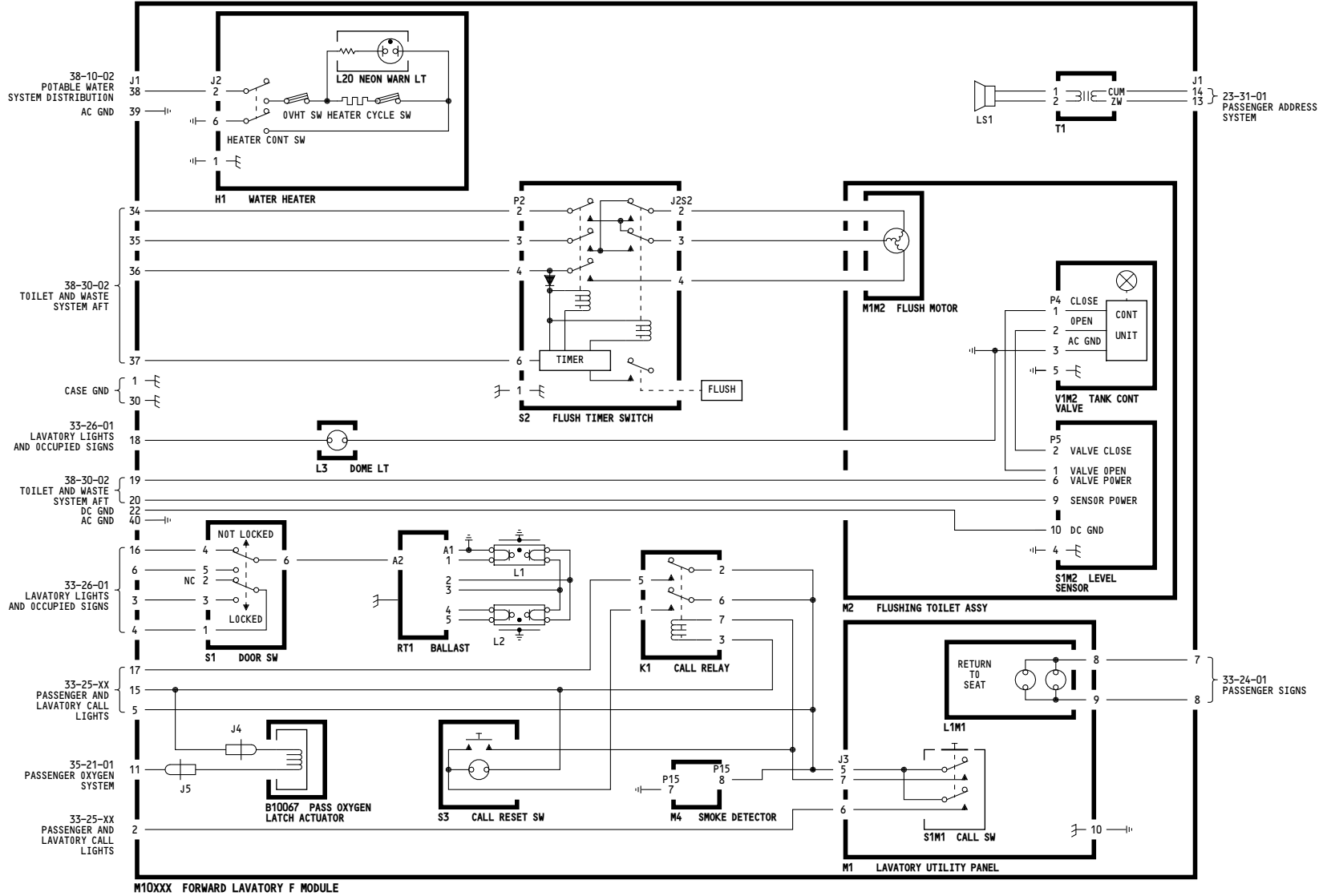
115-199	<b>FORWARD LAVATORY MODULE</b>
	D280N032S

**25-41-02**

Page 102

Jan 21/2005

5020



M10XXX FORWARD LAVATORY F MODULE

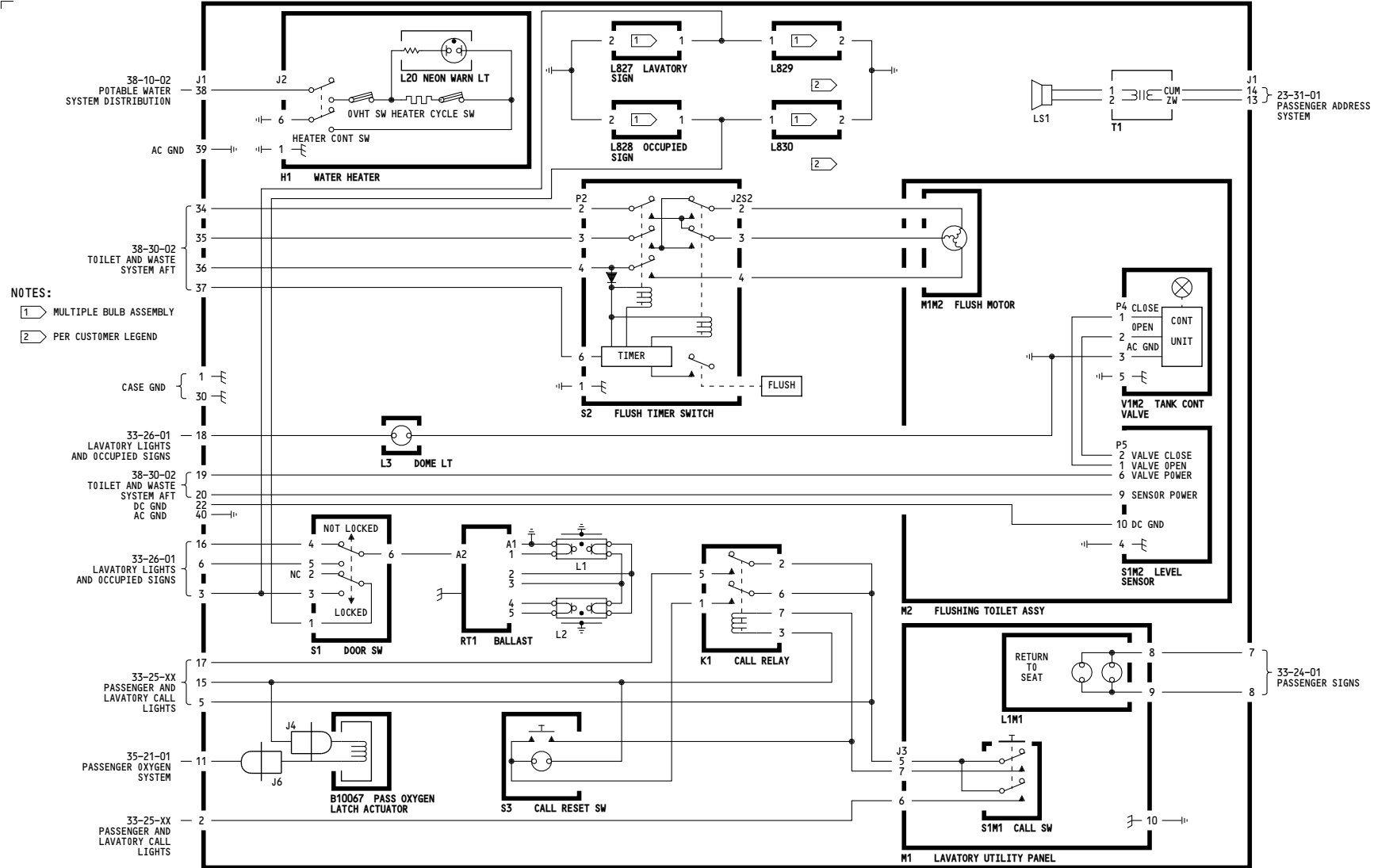
115-199	<b>FORWARD LAVATORY F MODULE</b>
	D280N032S

**25-41-03**

Page 101

Jan 21/2005

5020



001-099	<p><b>MID - FWD LAVATORY MODULES</b></p> <p>D280N032S</p>
---------	---

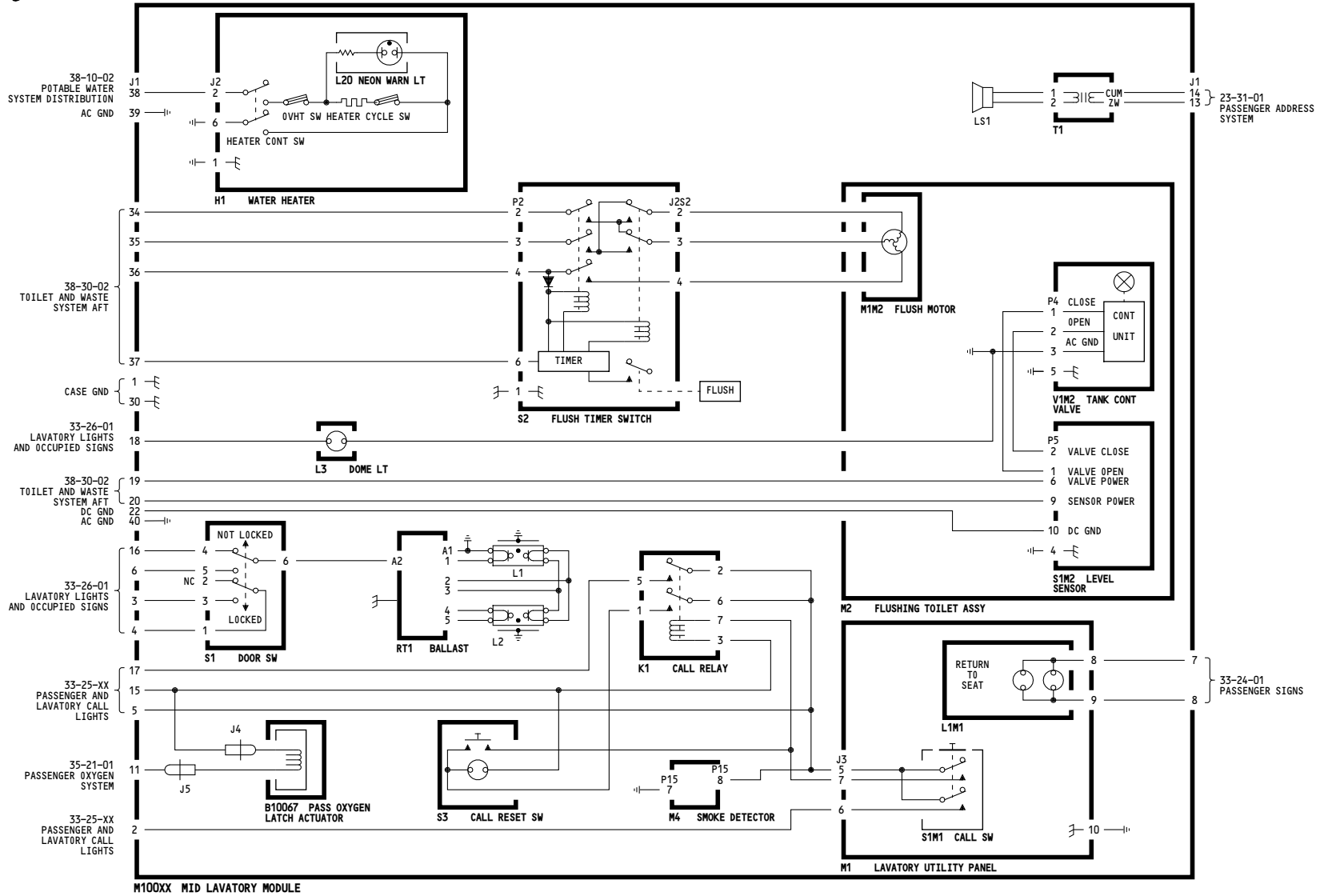
**25-41-04**

Page 101

Jan 21/2005



5020

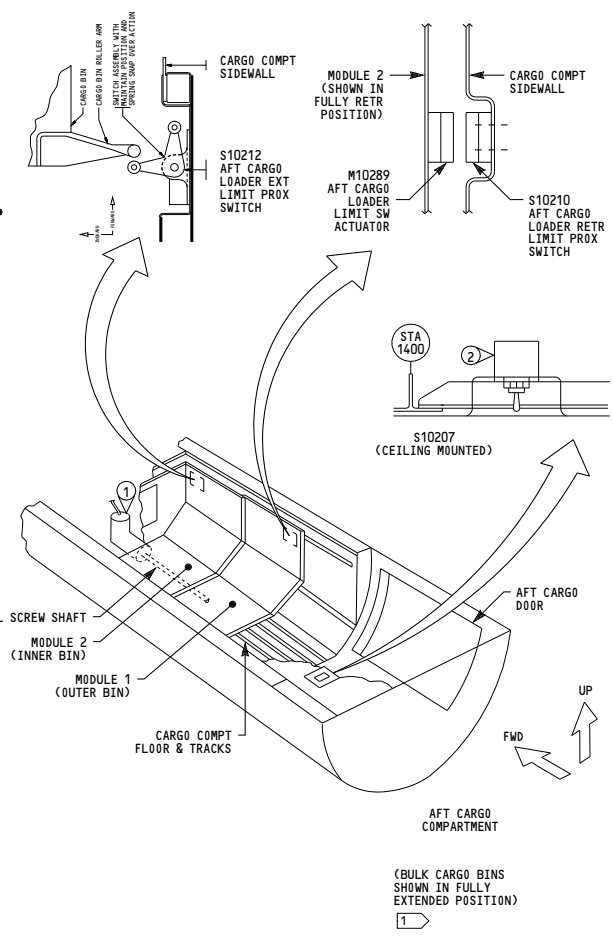
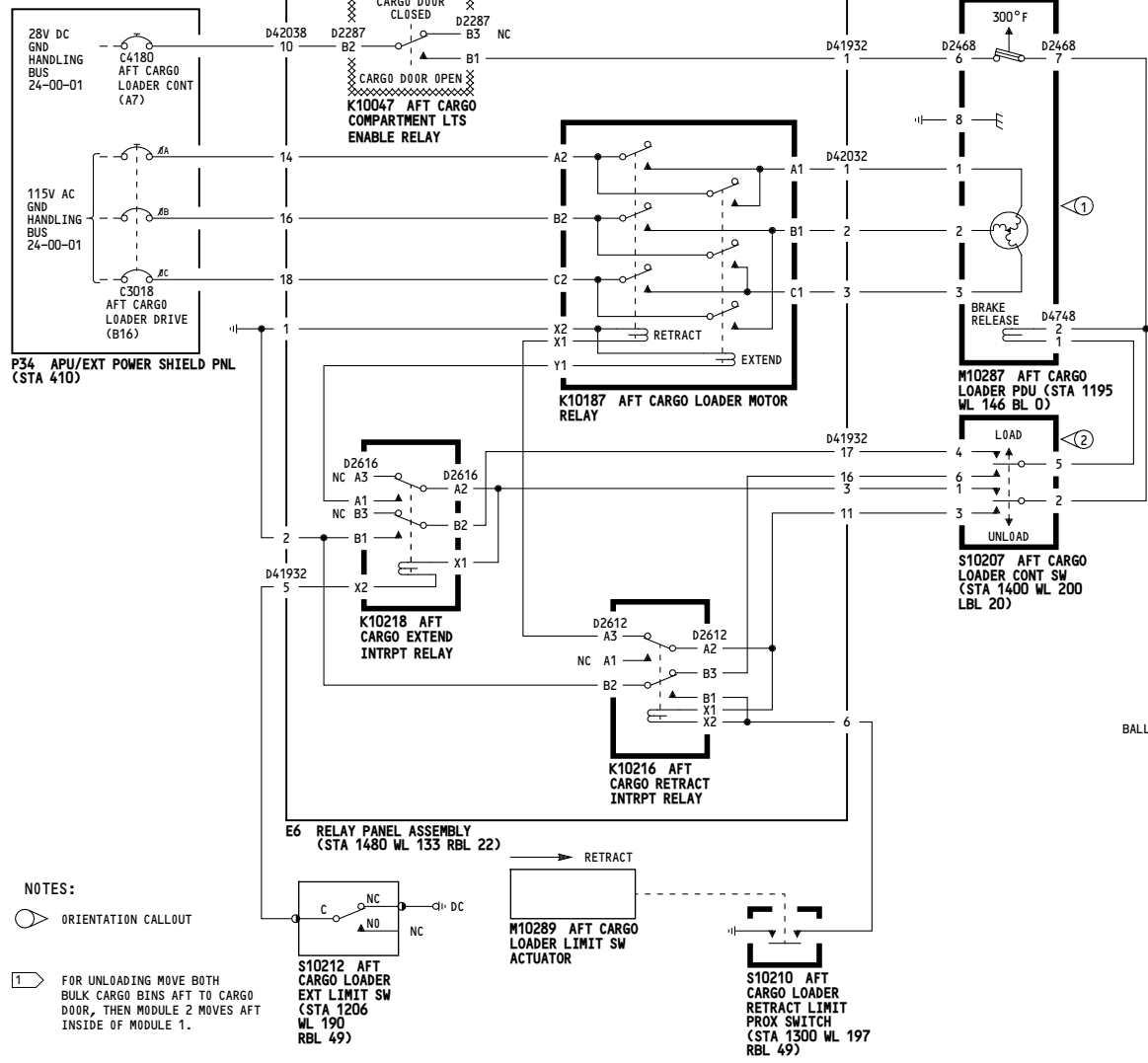


ALL	MID LAVATORY MODULES
	D280N032S

**25-41-05**

WIRING DIAGRAMS  
25-51-21

5014



115-199

**CARGO LOADER SYSTEM - AFT CARGO COMPARTMENT**

D280N032S

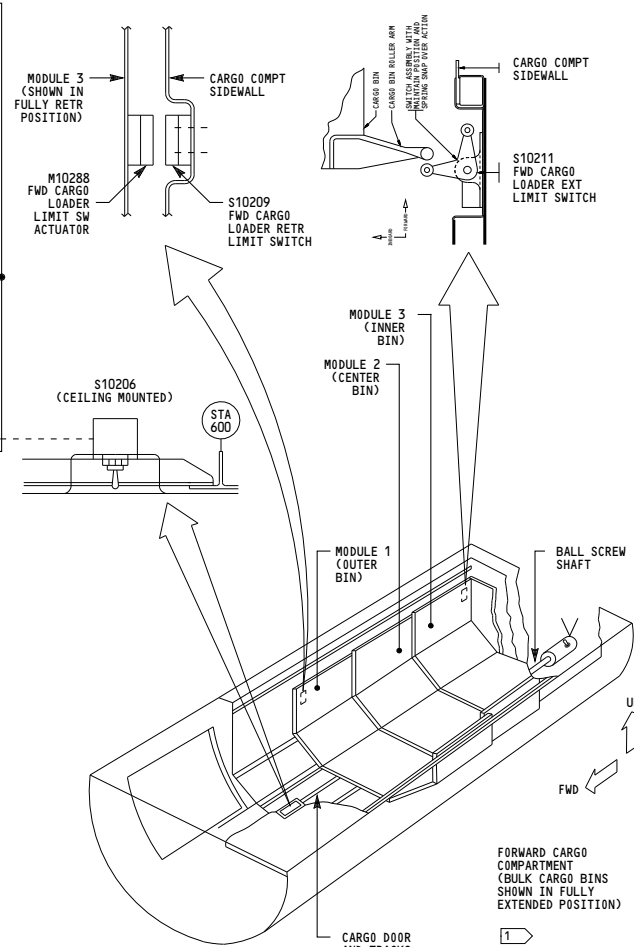
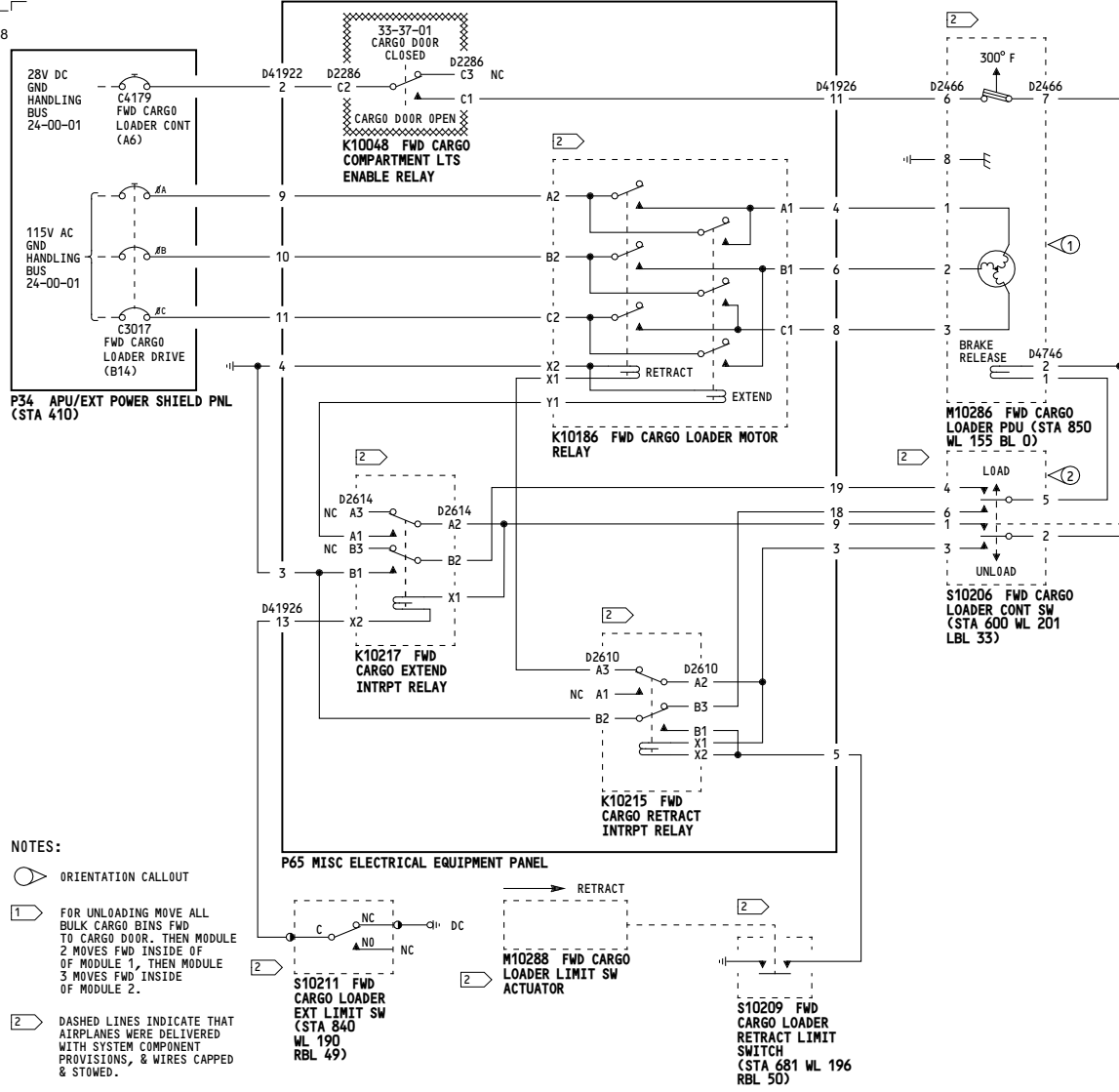
**25-51-01**

Page 101

Jan 21/2005

5018

WIRING DIAGRAMS  
25-51-11



- NOTES:**
- ORIENTATION CALLOUT
  - ① FOR UNLOADING MOVE ALL BULK CARGO BINS FWD TO CARGO DOOR, THEN MODULE 2 MOVES FWD INSIDE OF OF MODULE 1, THEN MODULE 3 MOVES FWD INSIDE OF MODULE 2.
  - ② DASHED LINES INDICATE THAT AIRPLANES WERE DELIVERED WITH SYSTEM COMPONENT PROVISIONS, & WIRES CAPPED & STOWED.

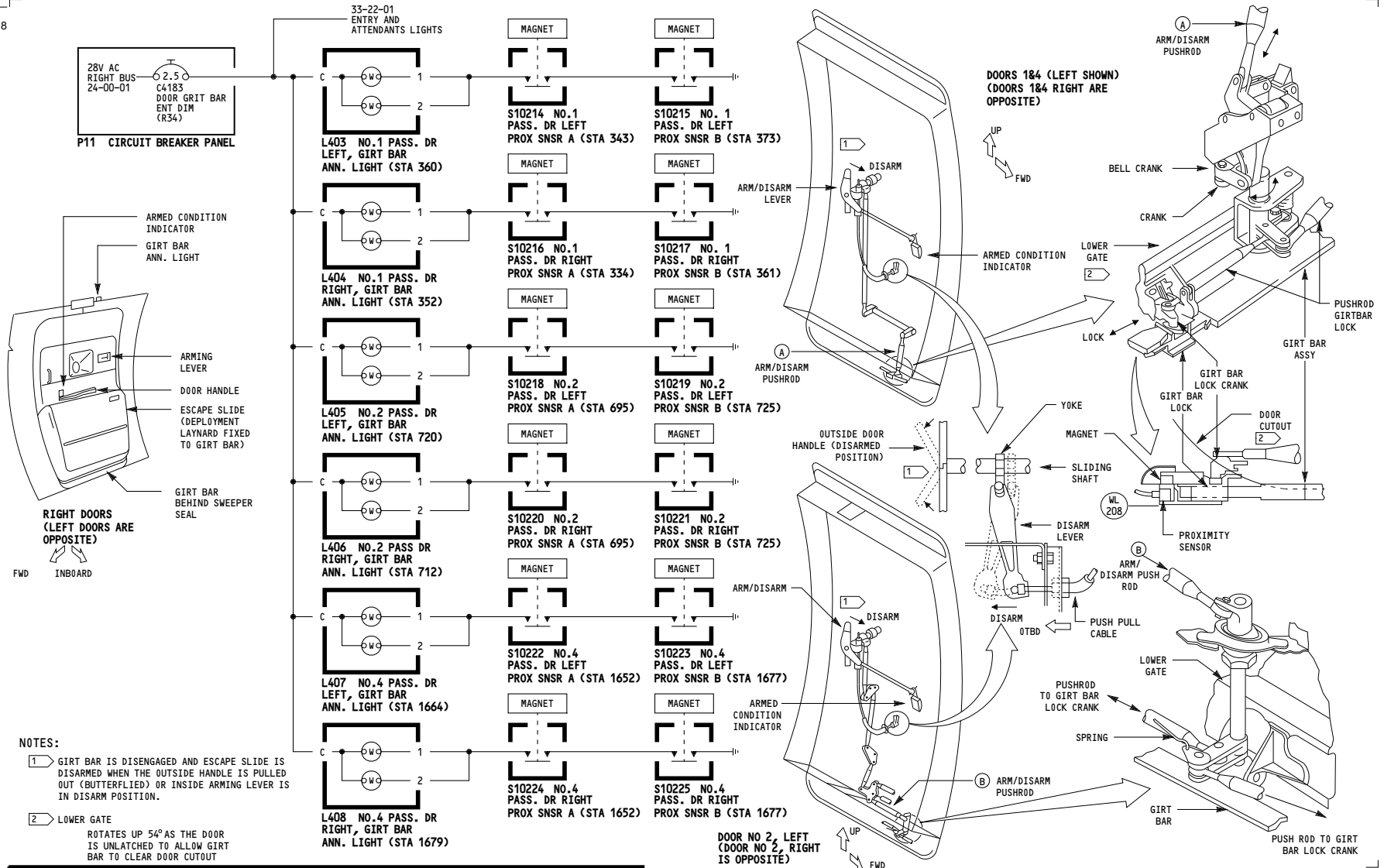
115-199	<b>CARGO LOADER SYSTEM - FORWARD CARGO COMPARTMENT</b>
D280N032S	

**25-51-02**

Page 101

Jan 21/2005

5018



**25-66-01**