

**CHAPTER**

**25**

**EQUIPMENT / FURNISHINGS**



CHAPTER 25  
EQUIPMENT / FURNISHINGS

CH-SC-SU	Schem	Page	Sheet	Date	CH-SC-SU	Schem	Page	Sheet	Date
25-EFFECTIVE PAGES					25-31-05				
		1 thru 2		May 06/2009	D		101		May 06/2009
25-CONTENTS					25-31-07				
R		1		May 06/2009	D		101		May 06/2009
O		2		BLANK					
25-ALPHABETICAL INDEX					25-31-08				
O		1		May 06/2009	R		101		May 06/2009
		2		BLANK					
	25-29-01				O		101		Oct 09/2008
R		101		May 06/2009	O		102		Oct 09/2008
D		102		May 06/2009	D		103	1	May 06/2009
	25-31-00				D			2	May 06/2009
R		101		May 06/2009	D			3	May 06/2009
D		102		May 06/2009		25-41-01			
	25-31-01				R		101		May 06/2009
R		101		May 06/2009	D		102		May 06/2009
D		102		May 06/2009		25-41-02			
	25-31-02				R		101		May 06/2009
O		101		Jan 21/2005	D		102		May 06/2009
O		102		Jan 21/2005		25-41-03			
	25-31-04				D		101		May 06/2009
R		101		May 06/2009		25-41-04			
D		102	1	May 06/2009	R		101		May 06/2009
D			2	May 06/2009		25-41-05			
					R		101		May 06/2009

A = Added, R = Revised, D = Deleted, O = Overflow

25-EFFECTIVE PAGES



CHAPTER 25  
EQUIPMENT / FURNISHINGS

CH-SC-SU	Schem	Page	Sheet	Date	CH-SC-SU	Schem	Page	Sheet	Date
D	25-51-01	101		May 06/2009					
D	25-51-02	101		May 06/2009					
R	25-66-01	101		May 06/2009					

A = Added, R = Revised, D = Deleted, O = Overflow

**25-EFFECTIVE PAGES**

Page 2  
May 06/2009

D280N032S

CHAPTER 25  
EQUIPMENT / FURNISHINGS

Title	CH-SC-SU	Schem	Page	Sheet	Date	Effectivity
<b><u>PASSENGER AND CABIN ATTENDANT ACCOMMODATIONS</u></b>						
■ SERVICE OUTLETS	25-29-01		101		May 06/2009	ALL
<b><u>GALLEYS</u></b>						
■ GALLEY ARRANGEMENT	25-31-00		101		May 06/2009	ALL
■ FORWARD GALLEY POWER (G1A)	25-31-01		101		May 06/2009	ALL
FORWARD GALLEY 2 (G1B)	25-31-02		101		Jan 21/2005	001-003 005 007-099
			102		Jan 21/2005	004 006
■ MID FORWARD GALLEY (G2A)	25-31-04		101		May 06/2009	ALL
■ AFT GALLEY 2 (G4A)	25-31-08		101		May 06/2009	ALL
AFT GALLEY 1 (G4B)	25-31-09		101		Oct 09/2008	001-008 010-099
			102		Oct 09/2008	009
<b><u>LAVATORIES</u></b>						
■ LAVATORY MODULE LOCATIONS	25-41-01		101		May 06/2009	ALL
■ FORWARD LAVATORY MODULE	25-41-02		101		May 06/2009	ALL
■ MID - FWD LAVATORY MODULES	25-41-04		101		May 06/2009	ALL
■ MID LAVATORY MODULES	25-41-05		101		May 06/2009	ALL
<b><u>DOOR-MOUNTED ESCAPE SYSTEM</u></b>						
■ DOOR GIRT BAR ENGAGEMENT INDICATION	25-66-01		101		May 06/2009	ALL

CHAPTER 25  
EQUIPMENT / FURNISHINGS

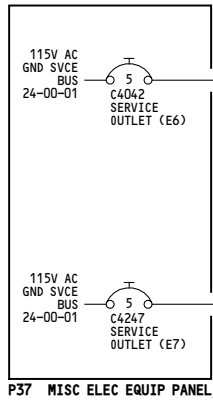
CH-SC-SU	Title
25-31-09	AFT GALLEY 1 (G4B)
25-31-08	AFT GALLEY 2 (G4A)
25-66-01	DOOR GIRT BAR ENGAGEMENT INDICATION
25-31-02	FORWARD GALLEY 2 (G1B)
25-31-01	FORWARD GALLEY POWER (G1A)
25-41-02	FORWARD LAVATORY MODULE
25-31-00	GALLEY ARRANGEMENT
25-41-01	LAVATORY MODULE LOCATIONS
25-41-04	MID - FWD LAVATORY MODULES
25-31-04	MID FORWARD GALLEY (G2A)
25-41-05	MID LAVATORY MODULES
25-29-01	SERVICE OUTLETS

CH-SC-SU	Title
----------	-------

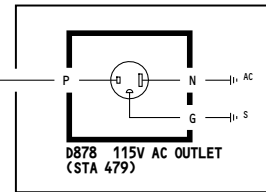
25-ALPHABETICAL INDEX

-D  
5012

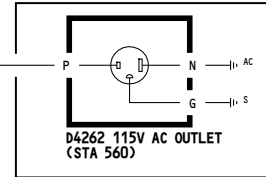
WIRING DIAGRAMS  
25-29-11



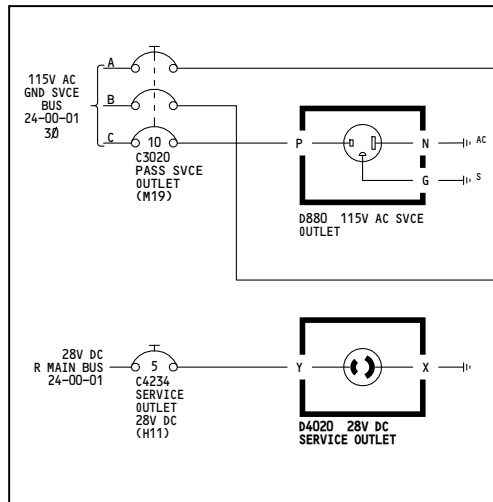
P37 MISC ELEC EQUIP PANEL, R



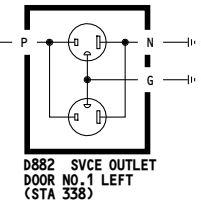
E3 EQUIPMENT RACK



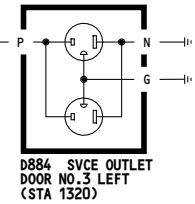
E5 EQUIPMENT RACK



P6 MAIN POWER DISTR PANEL



D882 SVCE OUTLET DOOR NO.1 LEFT (STA 338)



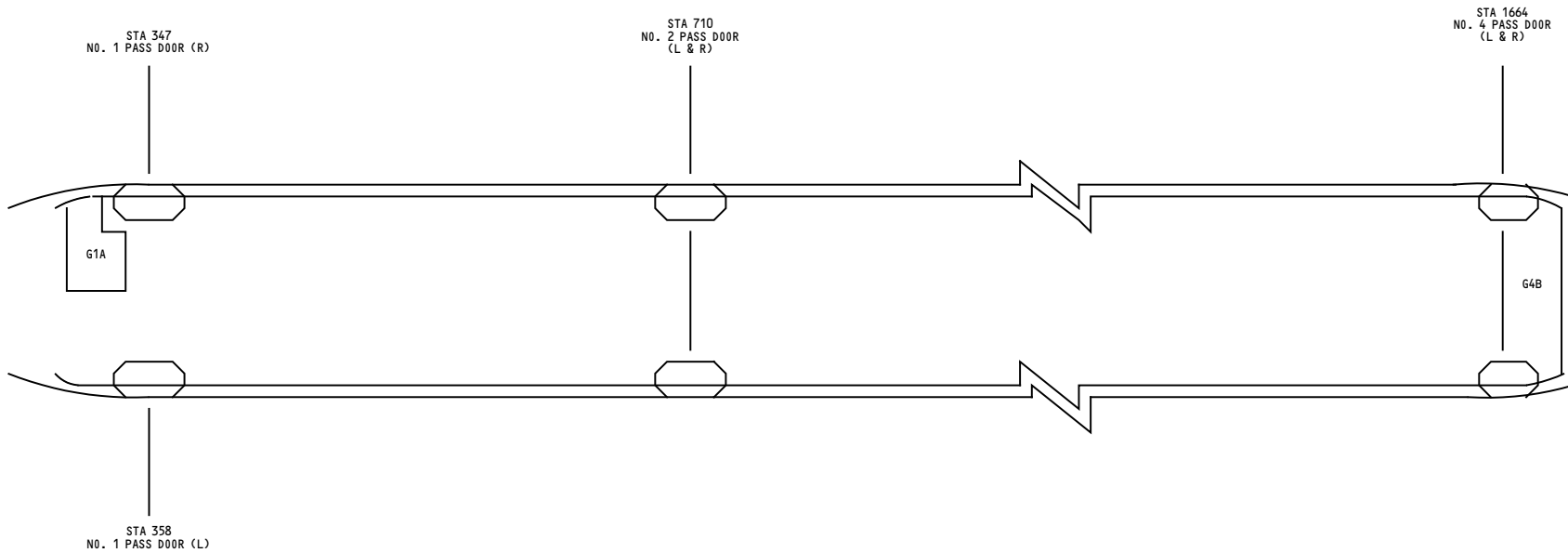
D884 SVCE OUTLET DOOR NO.3 LEFT (STA 1320)

ALL	<p><b>SERVICE OUTLETS</b></p> <p>D280N032S</p>
-----	--

**25-29-01**

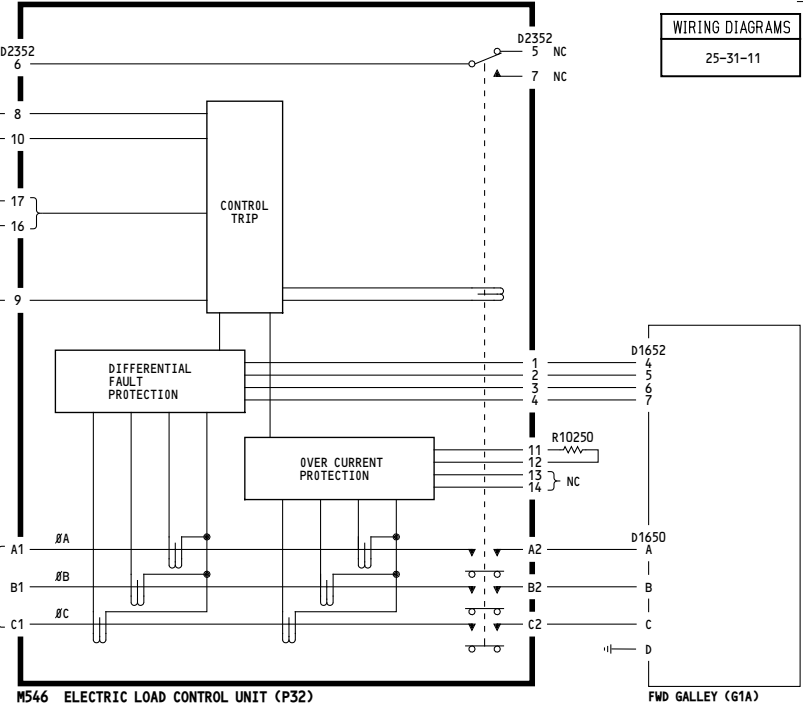
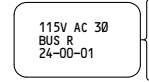
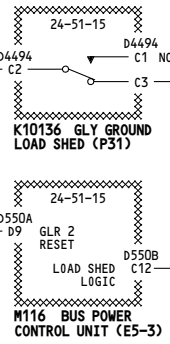
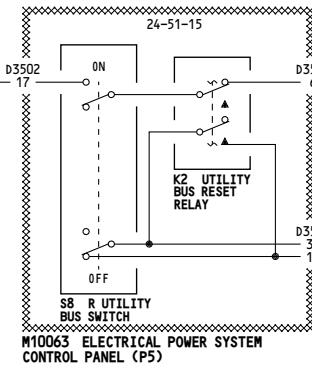
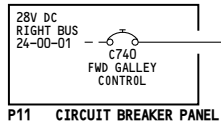
Page 101

May 06/2009

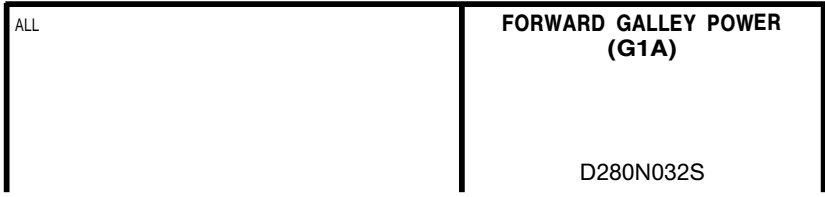


ALL	<p><b>GALLEY ARRANGEMENT</b></p> <p>D280N032S</p>
-----	---

-A  
5022



WIRING DIAGRAMS  
25-31-11



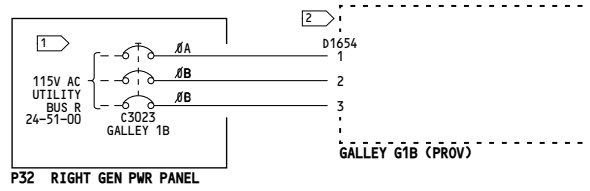
**25-31-01**

Page 101

May 06/2009



5019



NOTES:

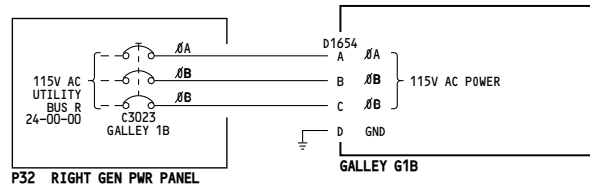
- 1 COLLAR "INOP"
- 2 CAP & STOW CONNECTOR

001-003, 005, 007-099	<p><b>FORWARD GALLEY 2 (G1B)</b></p> <p>D280N032S</p>
-----------------------	---

**25-31-02**

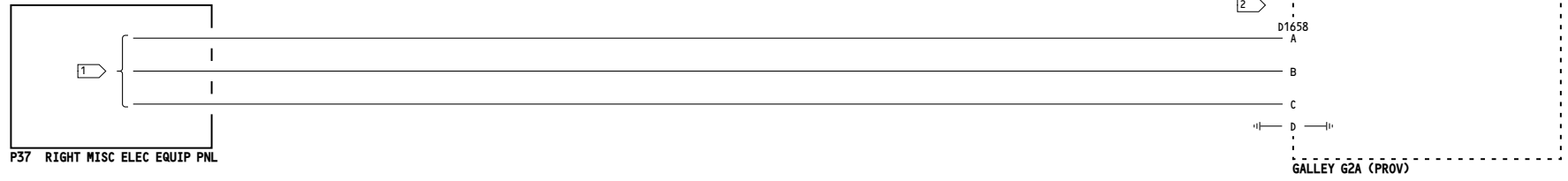
Page 101

Jan 21/2005



004, 006	<p><b>FORWARD GALLEY 2 (G1B)</b></p> <p>D280N032S</p>
----------	---

5014



NOTES:

1 STOW WIRES NEAR C/B C3023 (RESERVED FOR C3057).

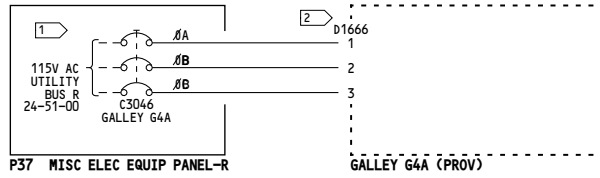
2 CAPPED & STOWED.

ALL	MID FORWARD GALLEY (G2A)  D280N032S
-----	---

**25-31-04**

Page 101

May 06/2009



**NOTES:**

- 1 COLLAR "INOP"
- 2 CAP & STOW CONNECTOR

ALL	<p><b>AFT GALLEY 2 (G4A)</b></p> <p>D280N032S</p>
-----	---

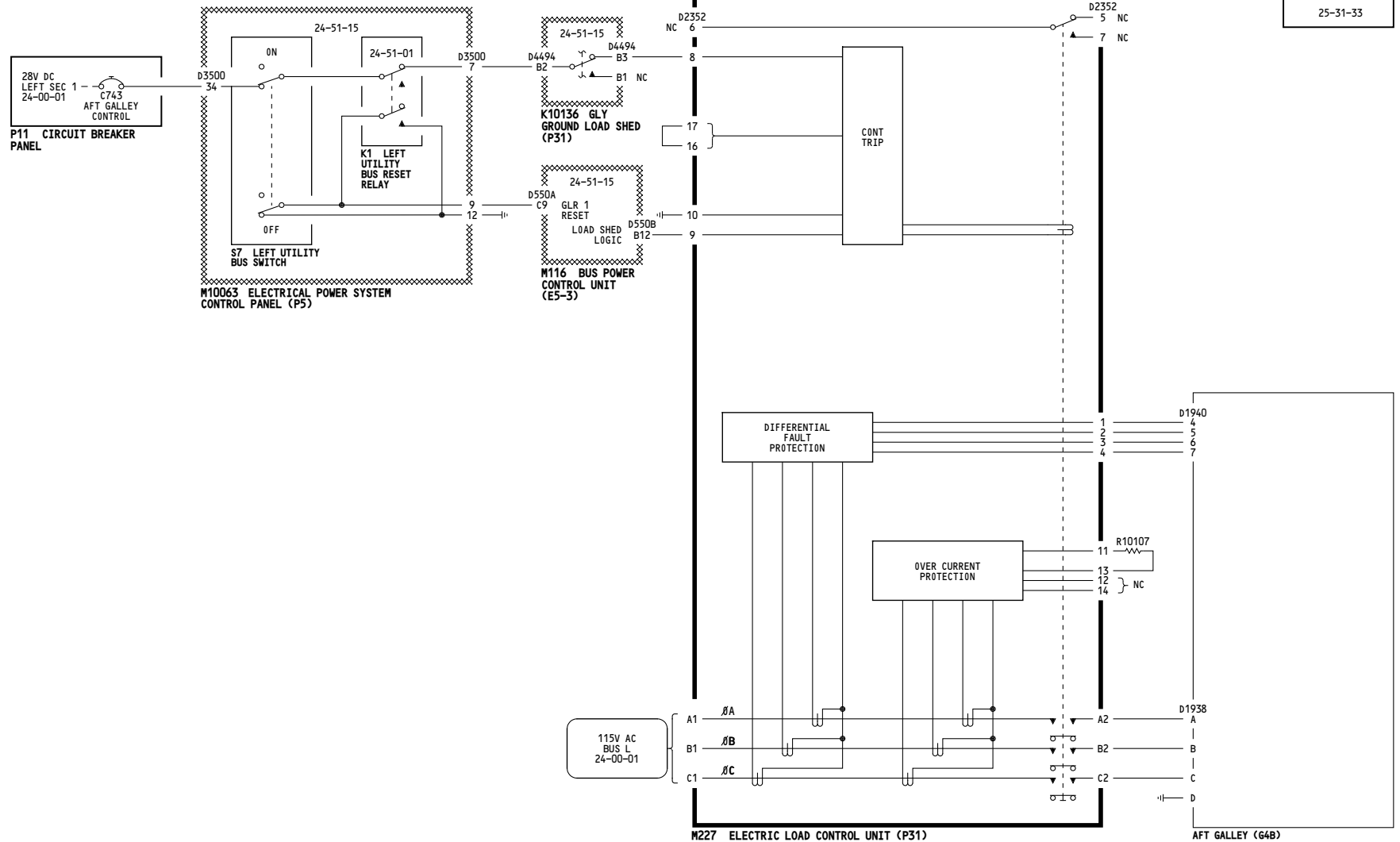
**25-31-08**

Page 101

May 06/2009

-A  
5001

WIRING DIAGRAMS  
25-31-33



001-008, 010-099	<p align="center"><b>AFT GALLEY 1 (G4B)</b></p> <p align="center">D280N032S</p>
------------------	---

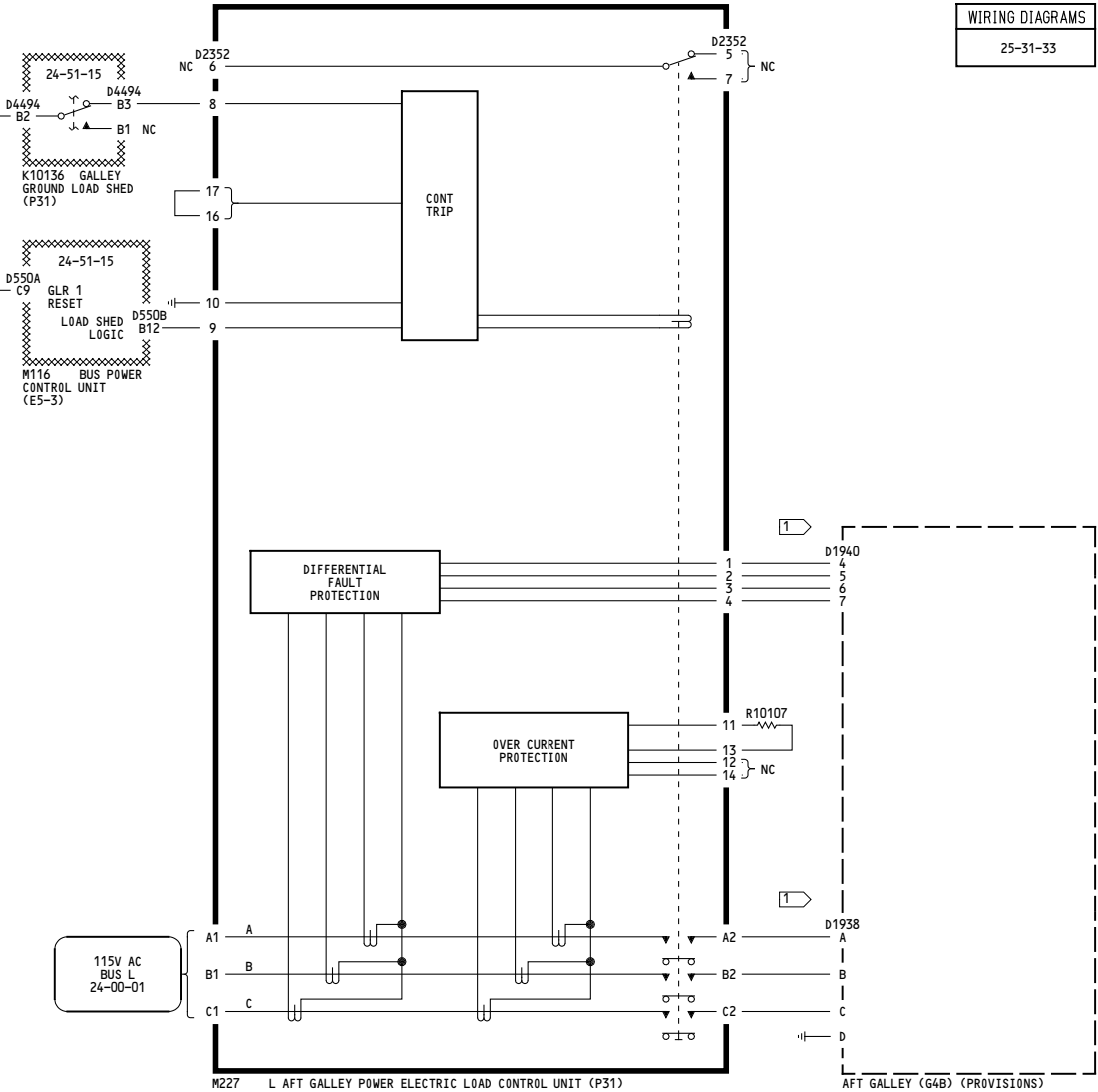
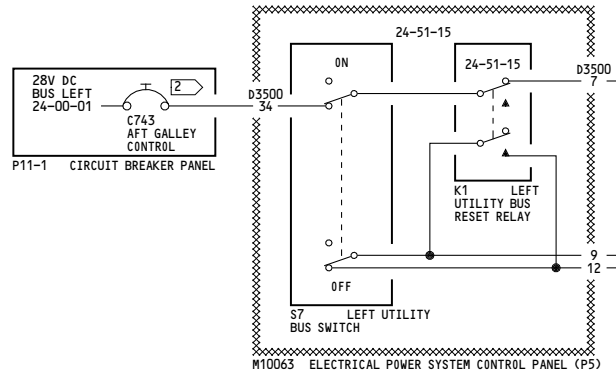
**25-31-09**

Page 101

Oct 09/2008

-A  
5009

WIRING DIAGRAMS  
25-31-33



- NOTES:
- 1 CAP AND STOW CONNECTOR
  - 2 COLLAR CIRCUIT BREAKER AND LABEL "INOP"

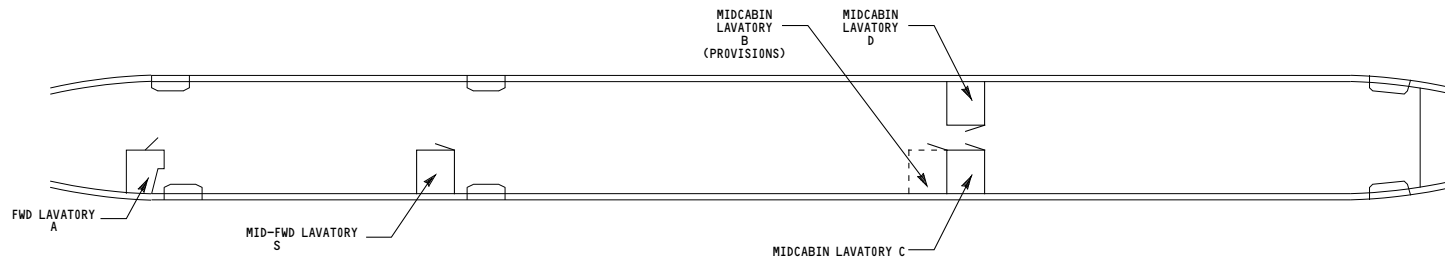
009	<b>AFT GALLEY 1 (G4B)</b>
D280N032S	

**25-31-09**

Page 102

Oct 09/2008

TABLE I LAVATORY POSITIONS					
LAVATORY POSITION	A	S	C	D	B <sup>3</sup>
LAVATORY MODULE NO.	M10012	M10654	M10014	M10015	M10013
LAVATORY CODE	YRH++++	YRT++++	YRK++++	YRL++++	YRJ++++
LAVATORY DISCONNECT	D42	D5690	D46	D48	D44



NOTES:

<sup>1</sup> TO OBTAIN LRU NUMBER OF LAVATORY EQUIPMENT, PREFIX ITEM NUMBER WITH LRU CODE IN TABLE I.  
 EXAMPLE: LRU ITEM NUMBER FOR DOME LIGHT IN LAVATORY A

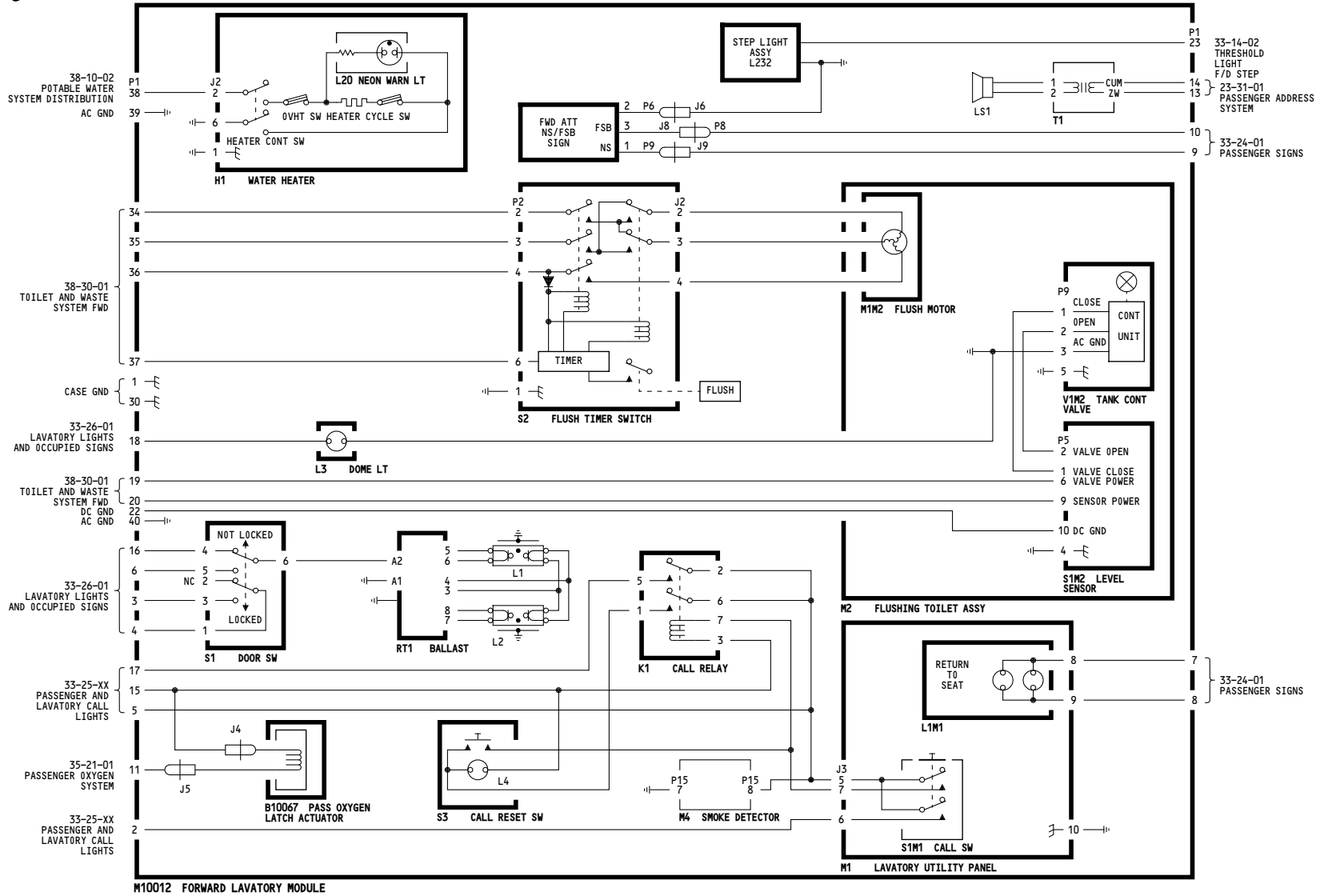


<sup>2</sup> SEE TABLE I FOR APPLICABLE LAVATORY POSITION

<sup>3</sup> PROVISIONS ONLY

ALL	LAVATORY MODULE LOCATIONS
	D280N032S

5020



ALL	<b>FORWARD LAVATORY MODULE</b>
	D280N032S

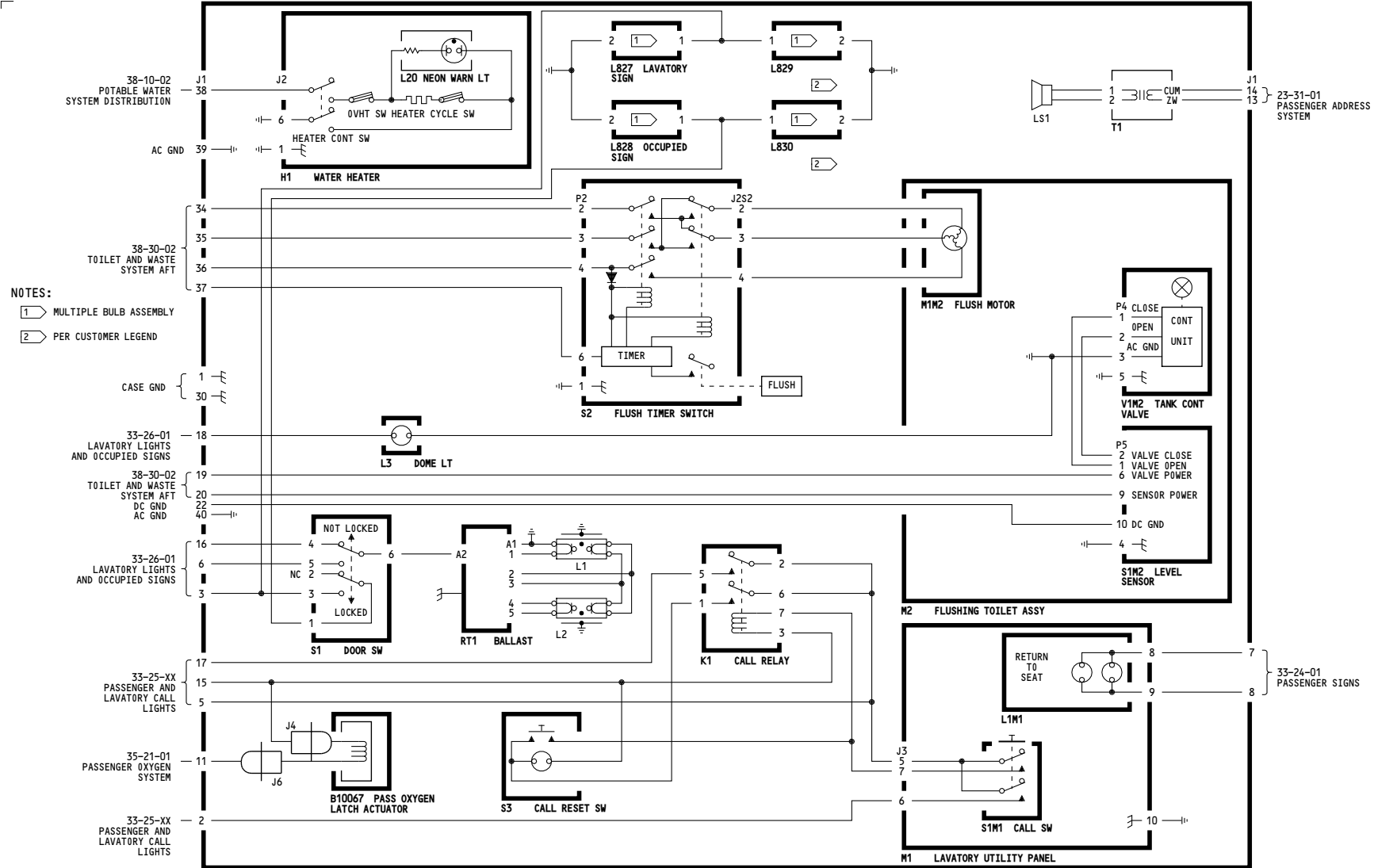
**25-41-02**

Page 101

May 06/2009



5020



- NOTES:**
- 1 MULTIPLE BULB ASSEMBLY
  - 2 PER CUSTOMER LEGEND

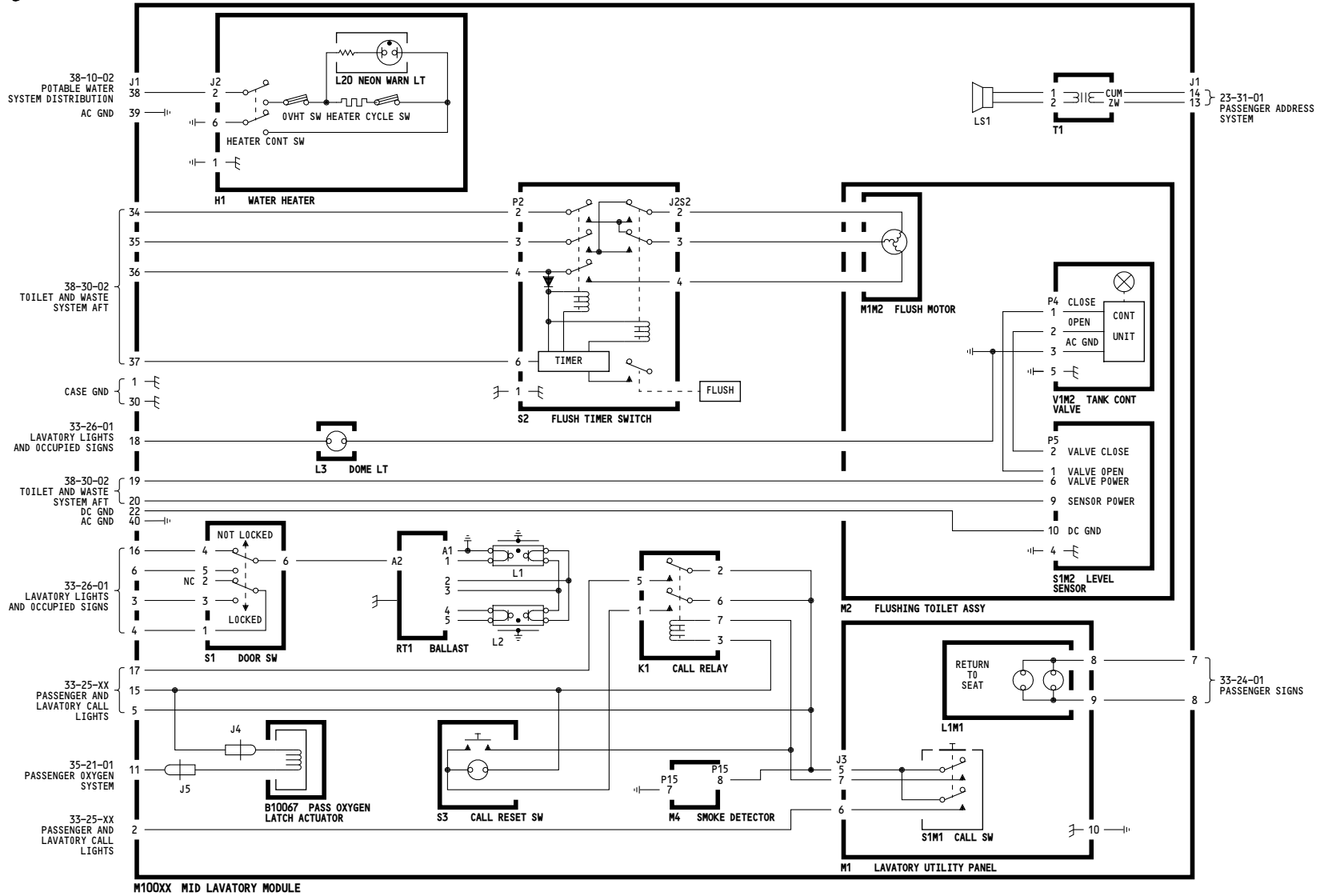
ALL	<b>MID - FWD LAVATORY MODULES</b>  D280N032S
-----	--

**25-41-04**

Page 101

May 06/2009

5020



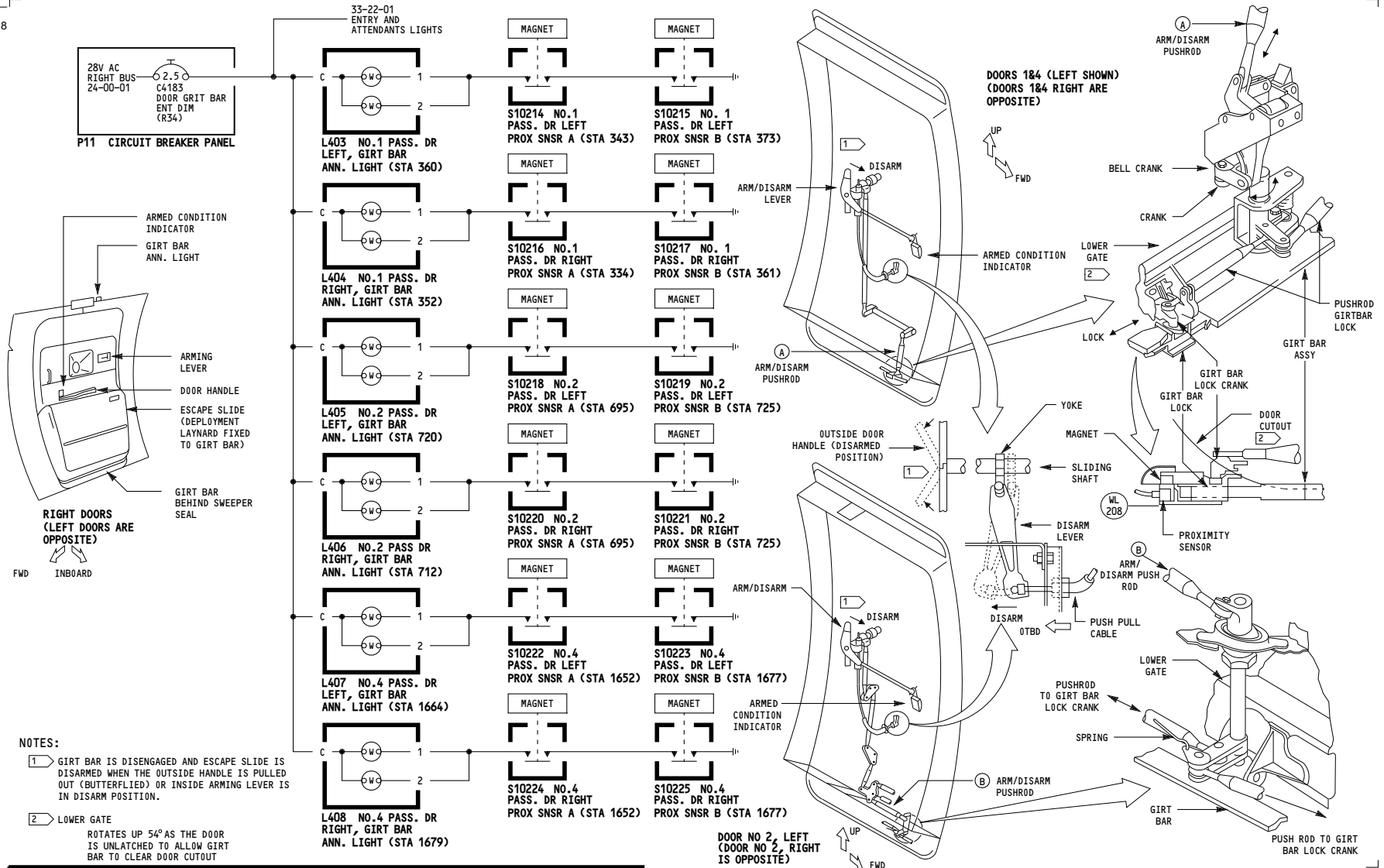
ALL	MID LAVATORY MODULES
	D280N032S

**25-41-05**

Page 101

May 06/2009

5018



ALL

**DOOR GIRT BAR ENGAGEMENT INDICATION**

D280N032S

**25-66-01**

Page 101

May 06/2009