

**CHAPTER**

**49**

**AIRBORNE AUXILIARY POWER**



CHAPTER 49  
AIRBORNE AUXILIARY POWER

CH-SC-SU	Schem	Page	Sheet	Date	CH-SC-SU	Schem	Page	Sheet	Date
49-EFFECTIVE PAGES		1		Oct 09/2008	49-41-01 (cont.)		102	1	Jan 21/2005
		2		BLANK				2	Jan 21/2005
49-CONTENTS						102.1		1	Dec 18/2007
R		1		Oct 09/2008				2	Dec 18/2007
		2		Dec 18/2007					
49-ALPHABETICAL INDEX					49-52-01				
		1		Dec 18/2007		101			Jan 21/2005
		2		BLANK	49-52-02				
49-00-00						101			Jan 21/2005
		101		Jan 21/2005	49-53-01				
		102		Jan 21/2005		101			Jan 21/2005
49-21-00					49-61-01				
		101		Jan 21/2005		101			Dec 18/2007
49-27-01						102			Jan 21/2005
		101		Jan 21/2005	49-70-01				
		102		Jan 21/2005		101			Dec 18/2007
49-31-01						102			Jan 21/2005
		101	1	Jan 21/2005					
			2	Jan 21/2005					
49-41-01									
R		101	1	Oct 09/2008					
			2	Dec 18/2007					
R		101.1	1	Oct 09/2008					
			2	Dec 18/2007					

A = Added, R = Revised, D = Deleted, O = Overflow

**49-EFFECTIVE PAGES**



CHAPTER 49  
AIRBORNE AUXILIARY POWER

Title	CH-SC-SU	Schem	Page	Sheet	Date	Effectivity
<b><u>AIRBORNE AUXILIARY POWER</u></b>						
AUXILIARY POWER UNIT - UNIT LOCATION	49-00-00		101		Jan 21/2005	001-099
			102		Jan 21/2005	115-199
<b><u>APU ENGINE</u></b>						
APU ENGINE	49-21-00		101		Jan 21/2005	ALL
<b><u>APU AND GENERATOR LUBRICATION SYSTEM</u></b>						
APU AND GENERATOR LUBRICATION SYSTEM	49-27-01		101		Jan 21/2005	001-099
			102		Jan 21/2005	115-199
<b><u>APU ENGINE FUEL SYSTEM</u></b>						
APU FUEL SYSTEM	49-31-01		101	1	Jan 21/2005	ALL
				2	Jan 21/2005	ALL
<b><u>APU IGNITION/STARTING SYSTEM</u></b>						
APU IGNITION AND STARTING SYSTEM	49-41-01		101	1	Oct 09/2008	001-099
				2	Dec 18/2007	001-099
			101.1	1	Oct 09/2008	001-011
				2	Dec 18/2007	001-011
			102	1	Jan 21/2005	115-199
				2	Jan 21/2005	115-199
			102.1	1	Dec 18/2007	115
				2	Dec 18/2007	115
<b><u>APU BLEED AIR SYSTEM</u></b>						
APU COOLING AIR AND BLEED AIR SYSTEM	49-52-01		101		Jan 21/2005	ALL
APU INLET DOOR SYSTEM	49-52-02		101		Jan 21/2005	ALL

CHAPTER 49  
AIRBORNE AUXILIARY POWER

Title	CH-SC-SU	Schem	Page	Sheet	Date	Effectivity
<b><u>APU SURGE BLEED SYSTEM</u></b>						
APU SURGE VALVE SYSTEM	49-53-01		101		Jan 21/2005	ALL
<b><u>APU CONTROL SYSTEM</u></b>						
APU CONTROL SYSTEM	49-61-01		101		Dec 18/2007	001-099
			102		Jan 21/2005	115-199
<b><u>INDICATING</u></b>						
APU INDICATION	49-70-01		101		Dec 18/2007	001-099
			102		Jan 21/2005	115-199

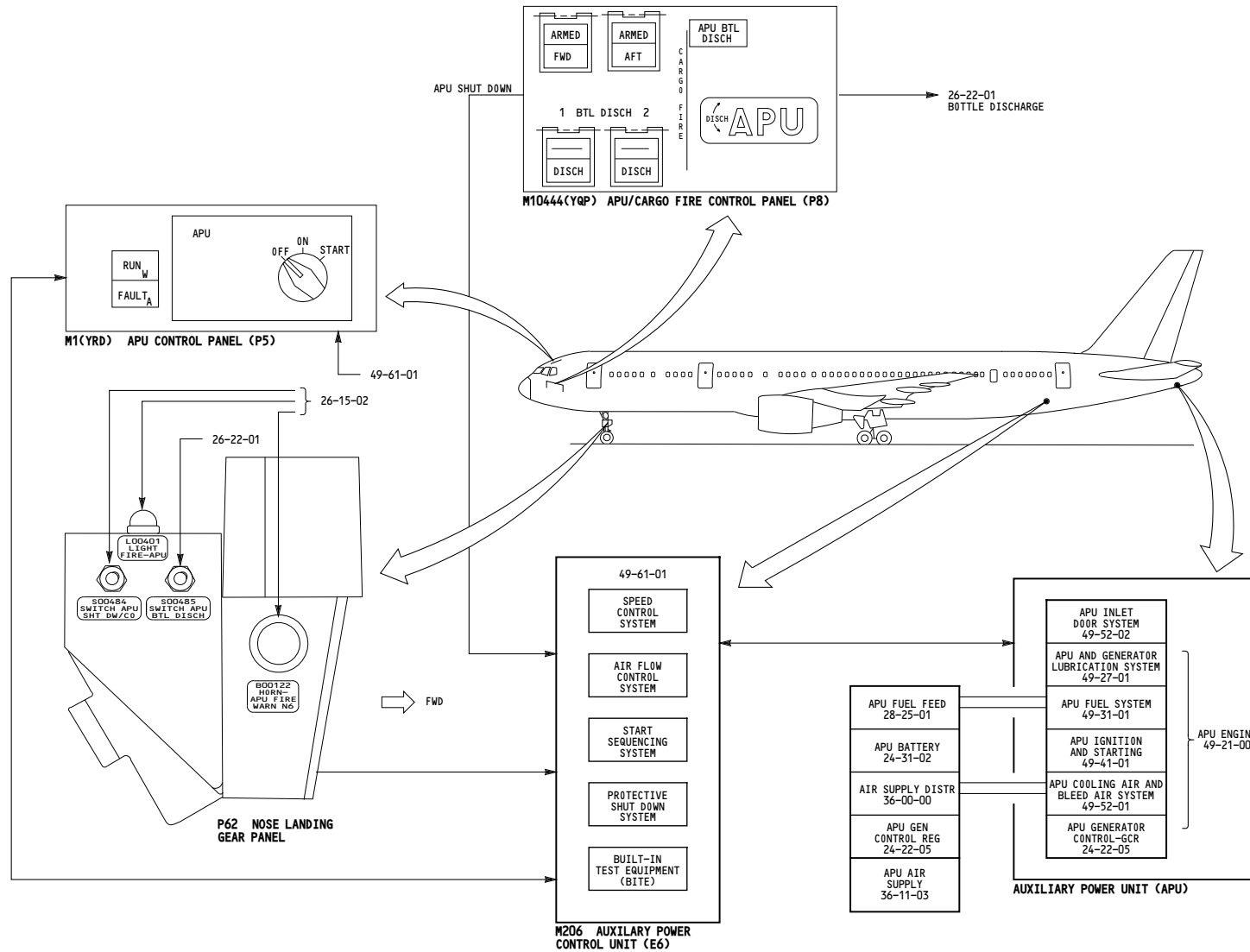
**CHAPTER 49  
AIRBORNE AUXILIARY POWER**

CH-SC-SU	Title
49-27-01	APU AND GENERATOR LUBRICATION SYSTEM
49-61-01	APU CONTROL SYSTEM
49-52-01	APU COOLING AIR AND BLEED AIR SYSTEM
49-21-00	APU ENGINE
49-31-01	APU FUEL SYSTEM
49-41-01	APU IGNITION AND STARTING SYSTEM
49-70-01	APU INDICATION
49-52-02	APU INLET DOOR SYSTEM
49-53-01	APU SURGE VALVE SYSTEM
49-00-00	AUXILIARY POWER UNIT - UNIT LOCATION

CH-SC-SU	Title
----------	-------

**49-ALPHABETICAL INDEX**

5301



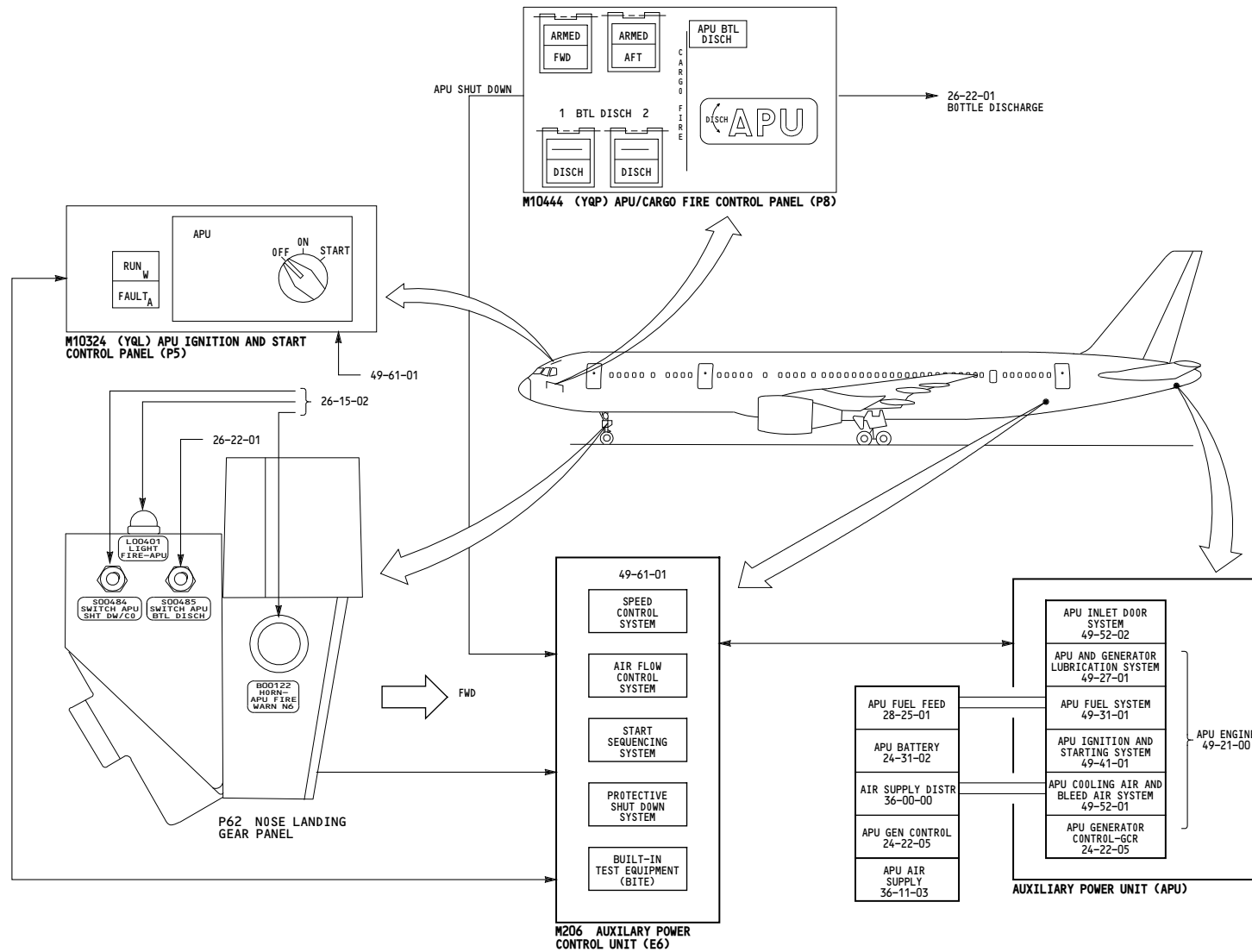
001-099	<p><b>AUXILIARY POWER UNIT - UNIT LOCATION</b></p> <p>D280N032S</p>
---------	---

**49-00-00**

Page 101

Jan 21/2005

5300



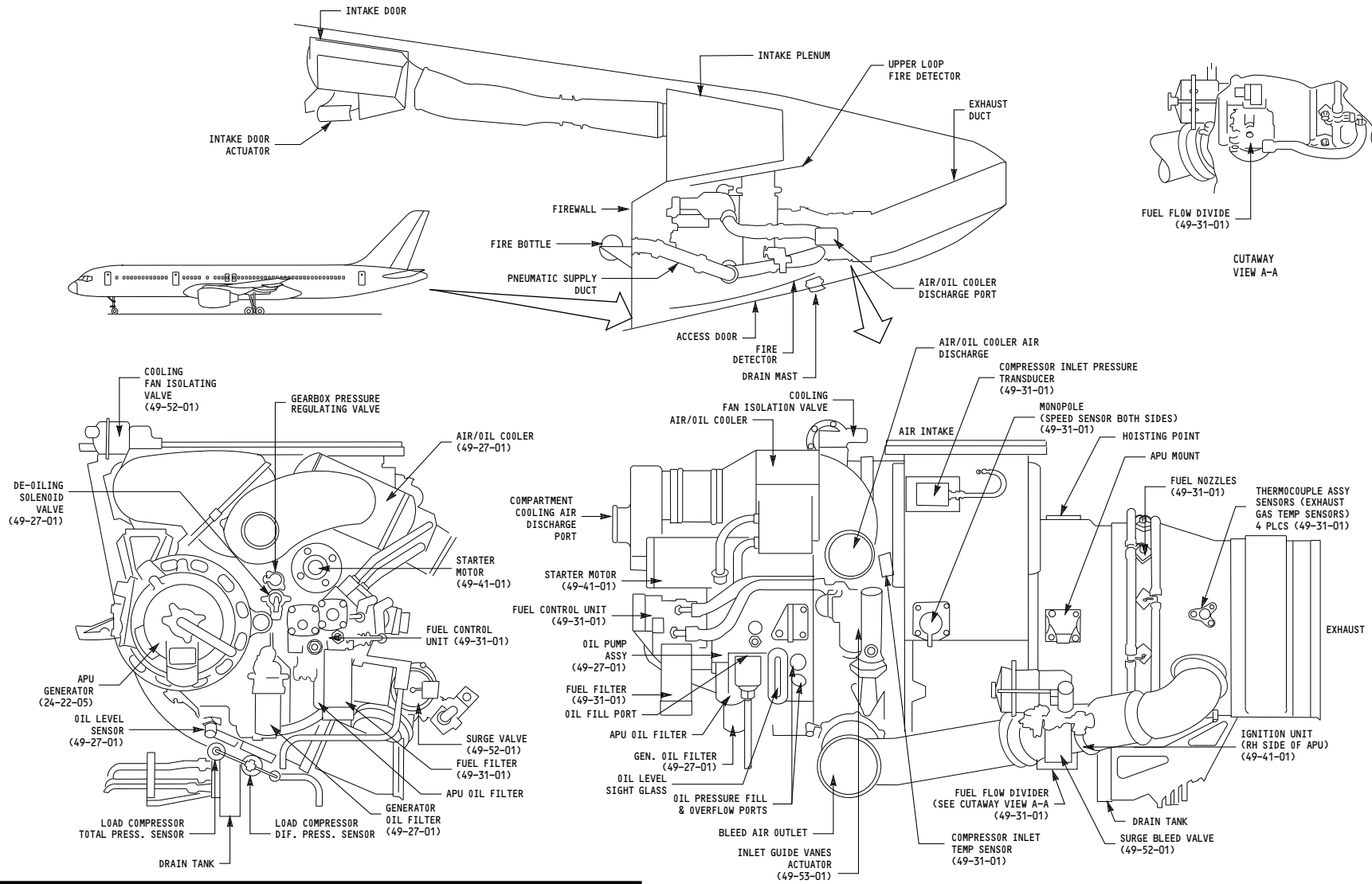
115-199	<p><b>AUXILIARY POWER UNIT - UNIT LOCATION</b></p> <p>D280N032S</p>
---------	---

**49-00-00**

Page 102

Jan 21/2005

5300



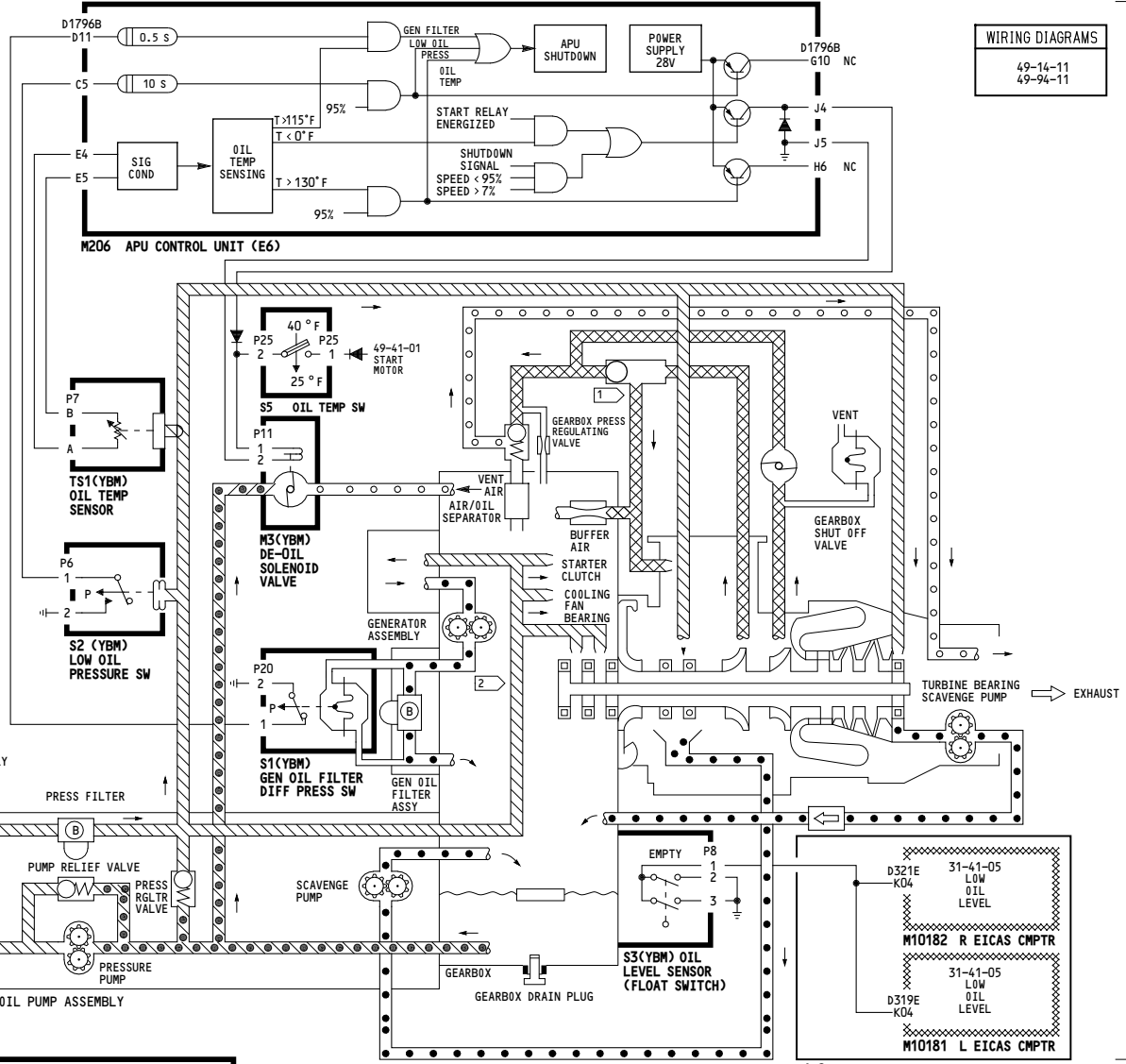
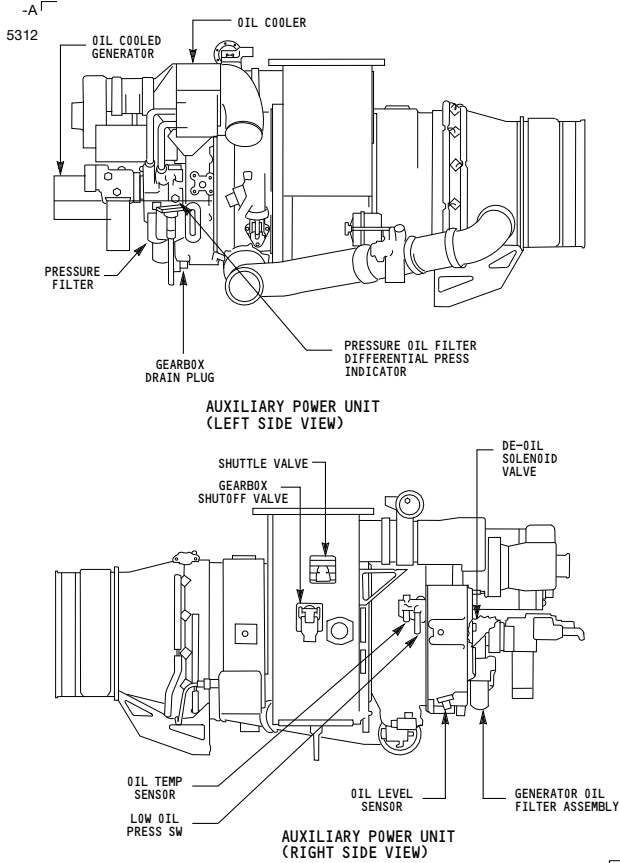
ALL	<p><b>APU ENGINE</b></p>    <p>D280N032S</p>
-----	--

**49-21-00**

Page 101

Jan 21/2005





**NOTES:**

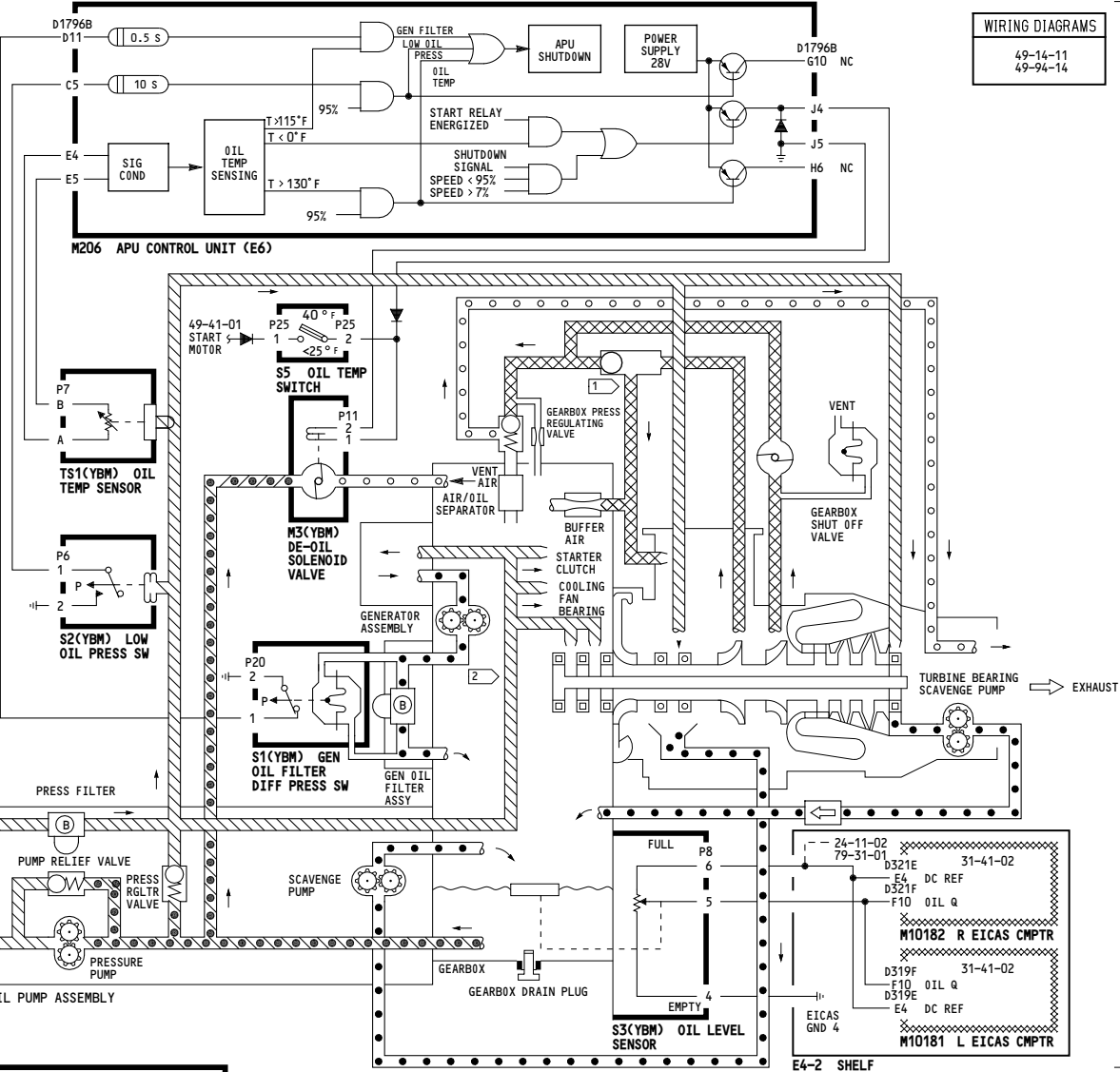
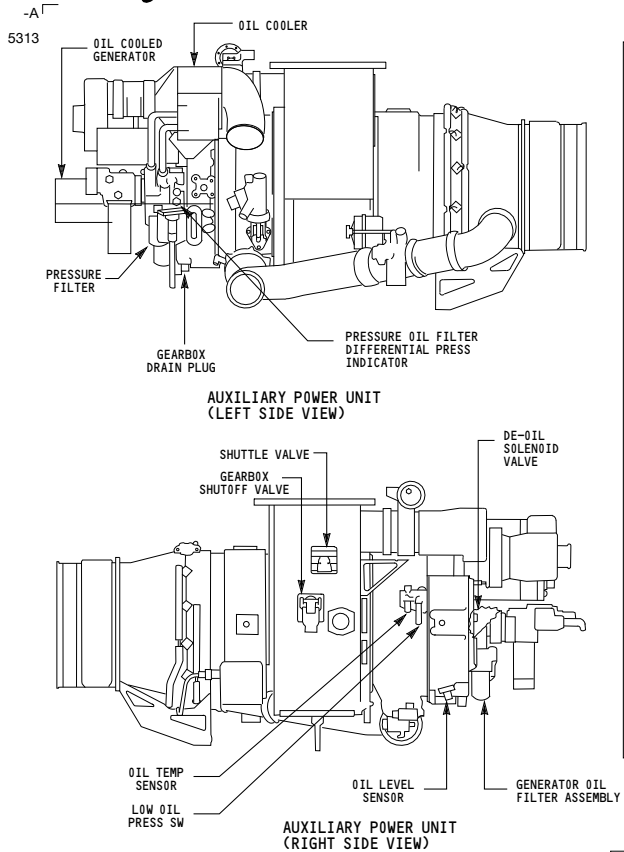
- BALL BEARING
- ROLLER BRG
- OIL JET
- SHUTTLE CHECK VALVE
- GENERATOR SCAVENGE PUMP
- PRESSURE
- SUPPLY
- SCAVENGE
- PRESSURING
- VENT
- OIL LINE
- AIR LINE

001-099

**APU AND GENERATOR LUBRICATION SYSTEM**

D280N032S

**49-27-01**



WIRING DIAGRAMS  
49-14-11  
49-94-14

- NOTES:**
- BALL BEARING
  - ROLLER BRG
  - OIL JET
  - SHUTTLE CHECK VALVE
  - GENERATOR SCAVENGE PUMP
  - PRESSURE
  - SUPPLY
  - SCAVENGE
  - PRESSURING
  - VENT

115-199

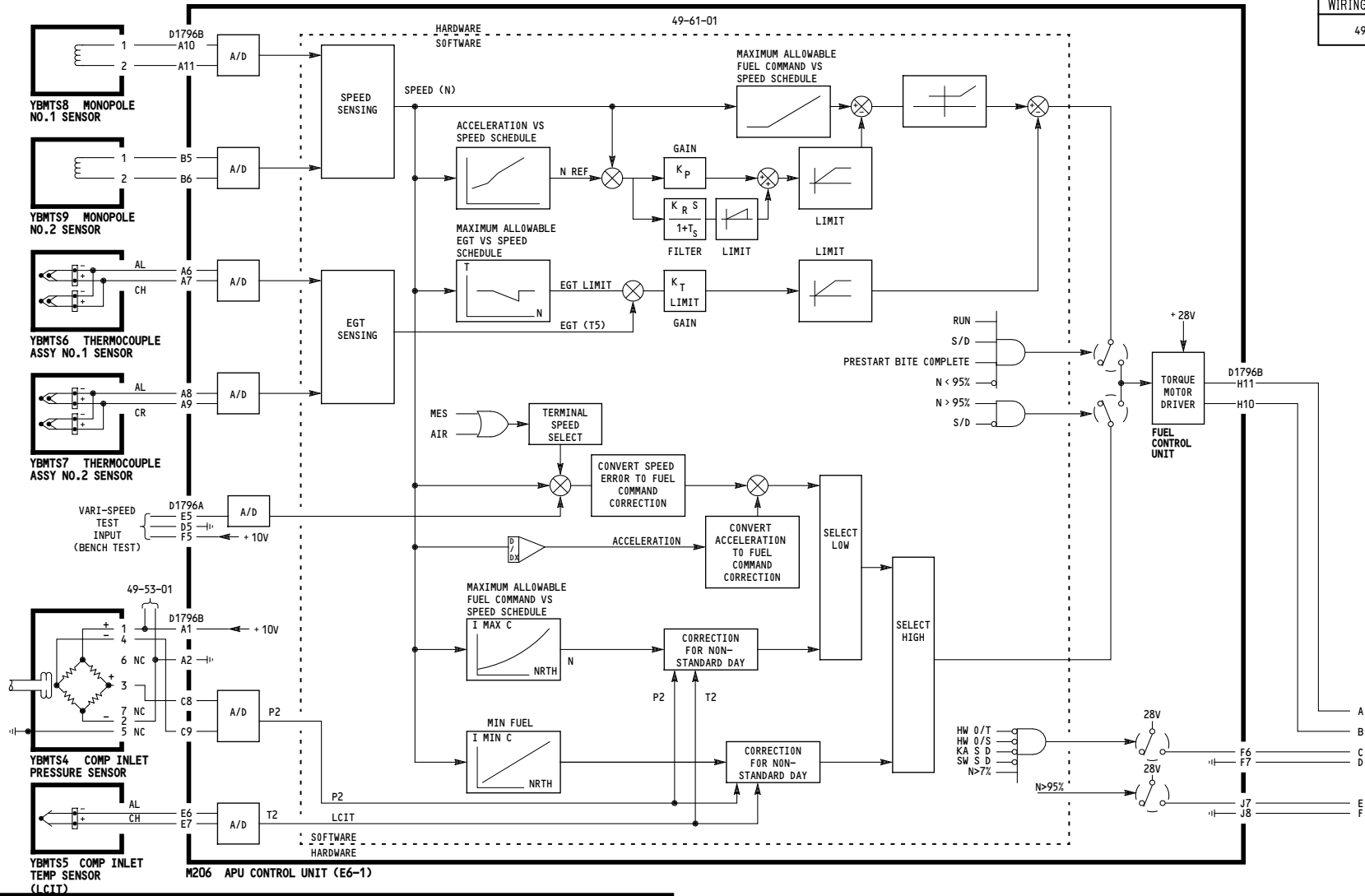
**APU AND GENERATOR LUBRICATION SYSTEM**

D280N032S

**49-27-01**

-A  
5300

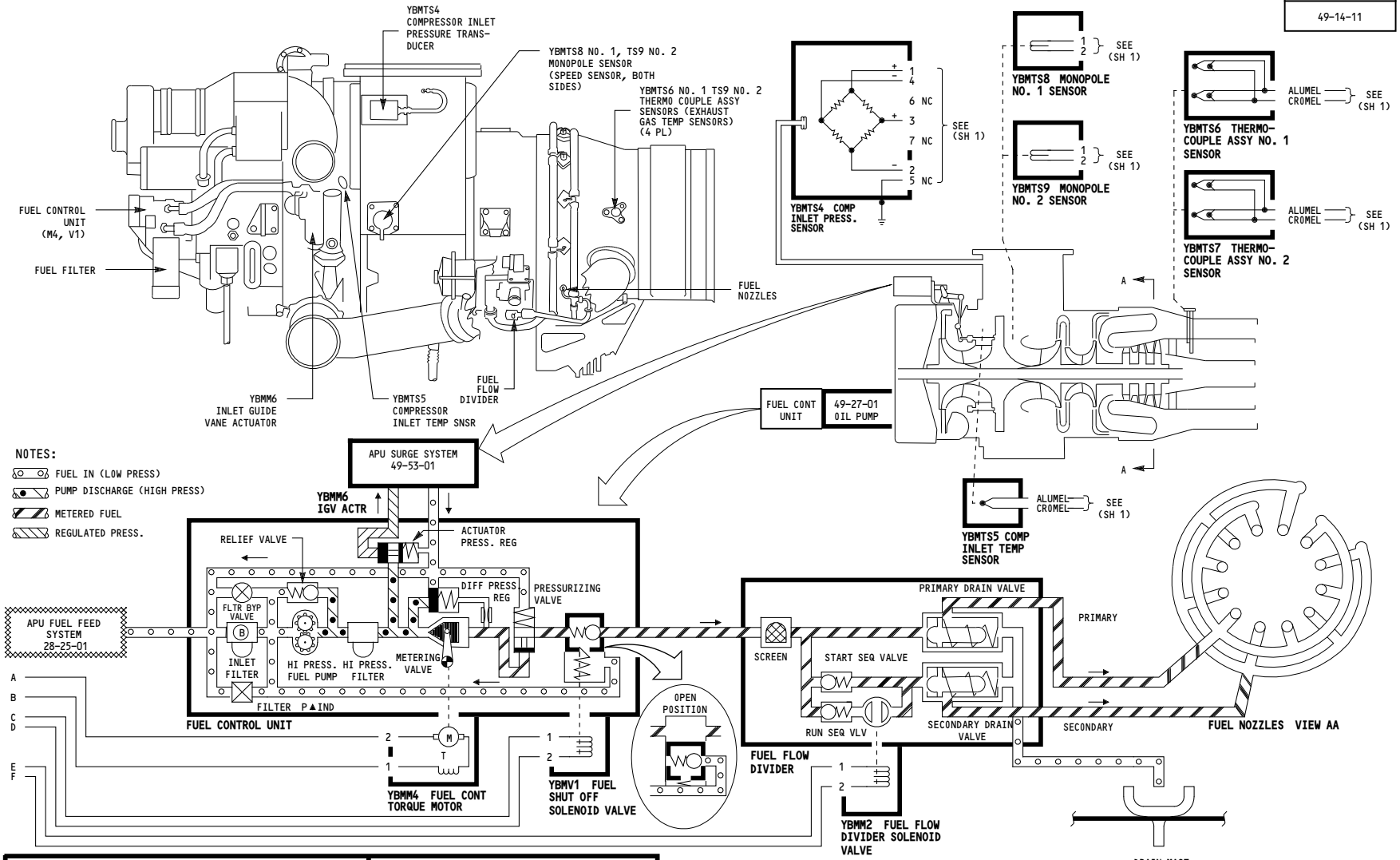
WIRING DIAGRAMS  
49-14-11



**49-31-01**

5300

WIRING DIAGRAMS  
49-14-11

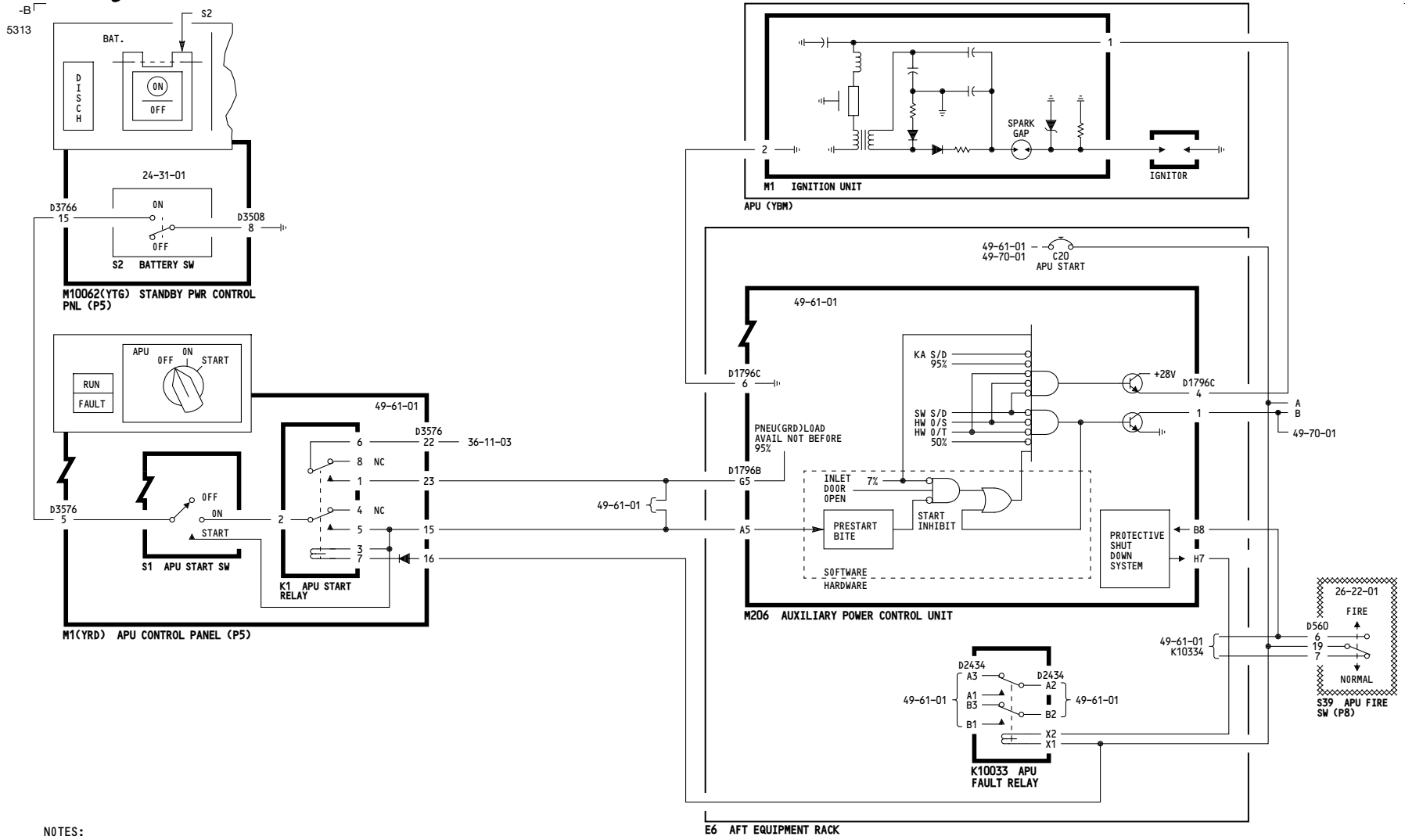


**NOTES:**  
 ○ FUEL IN (LOW PRESS)  
 ● PUMP DISCHARGE (HIGH PRESS)  
 ▨ METERED FUEL  
 ▩ REGULATED PRESS.

ALL	<b>APU FUEL SYSTEM</b>
	D280N032S

**49-31-01**

Page 101  
Sheet 2  
Jan 21/2005



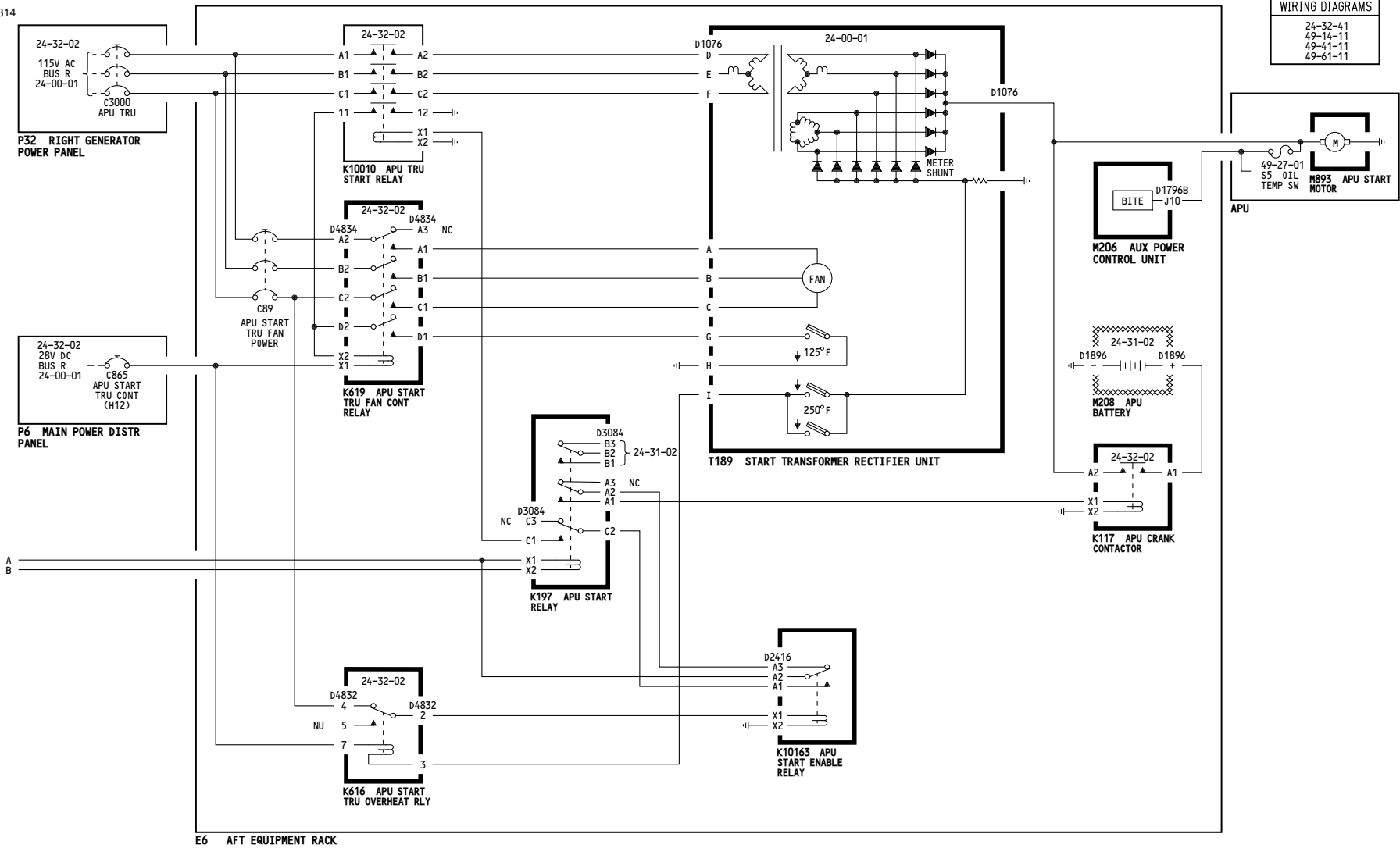
NOTES:

001-099	<p align="center"><b>APU IGNITION AND STARTING SYSTEM</b></p> <p align="center">D280N032S</p>
---------	---

**49-41-01**

Page 101  
Sheet 1  
Oct 09/2008

-B  
5314

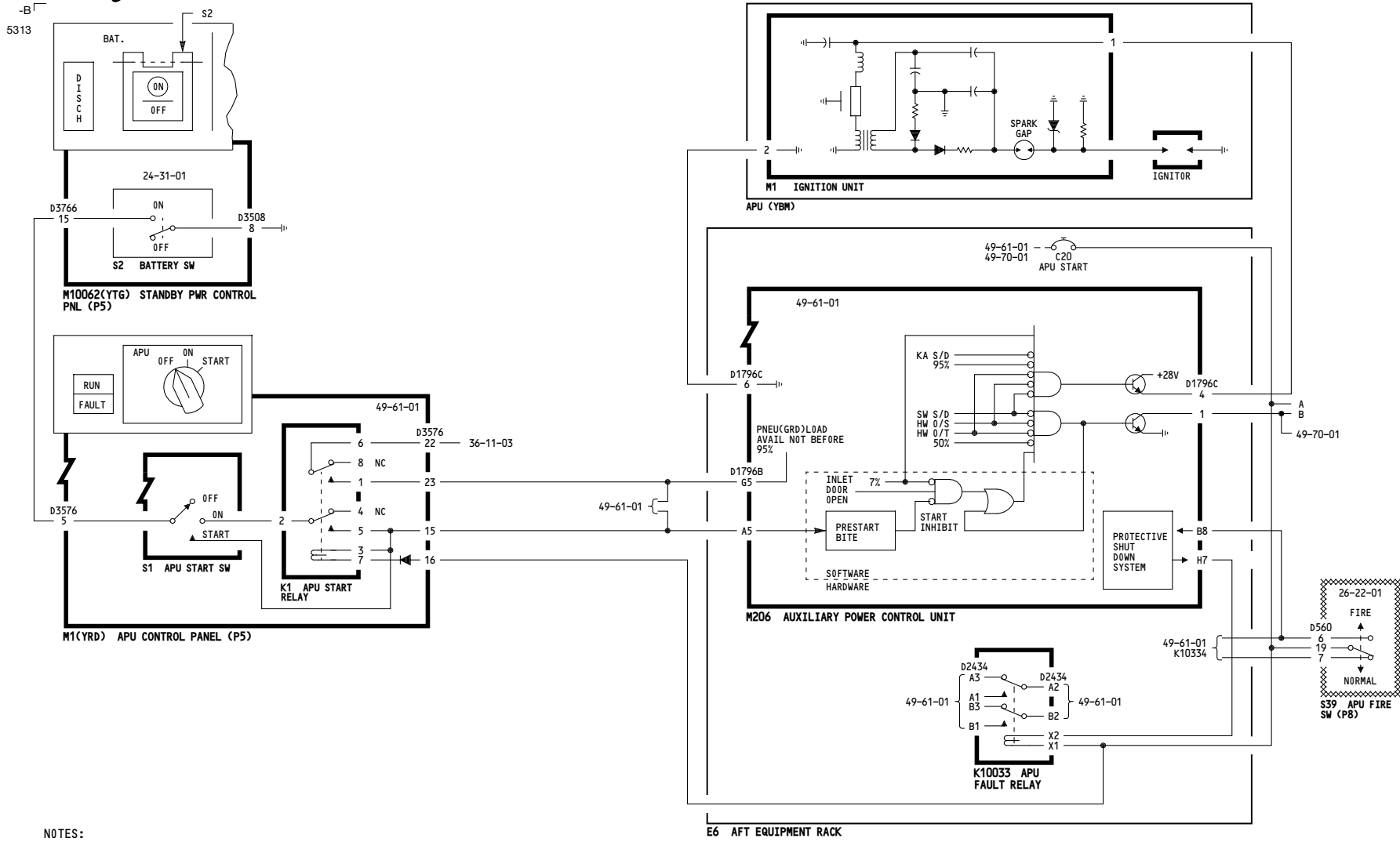


WIRING DIAGRAMS	
24-32-41	
49-14-11	
49-41-11	
49-61-11	

001-099	<p><b>APU IGNITION AND STARTING SYSTEM</b></p> <p>D280N032S</p>
---------	---

**49-41-01**

Page 101  
Sheet 2  
Dec 18/2007



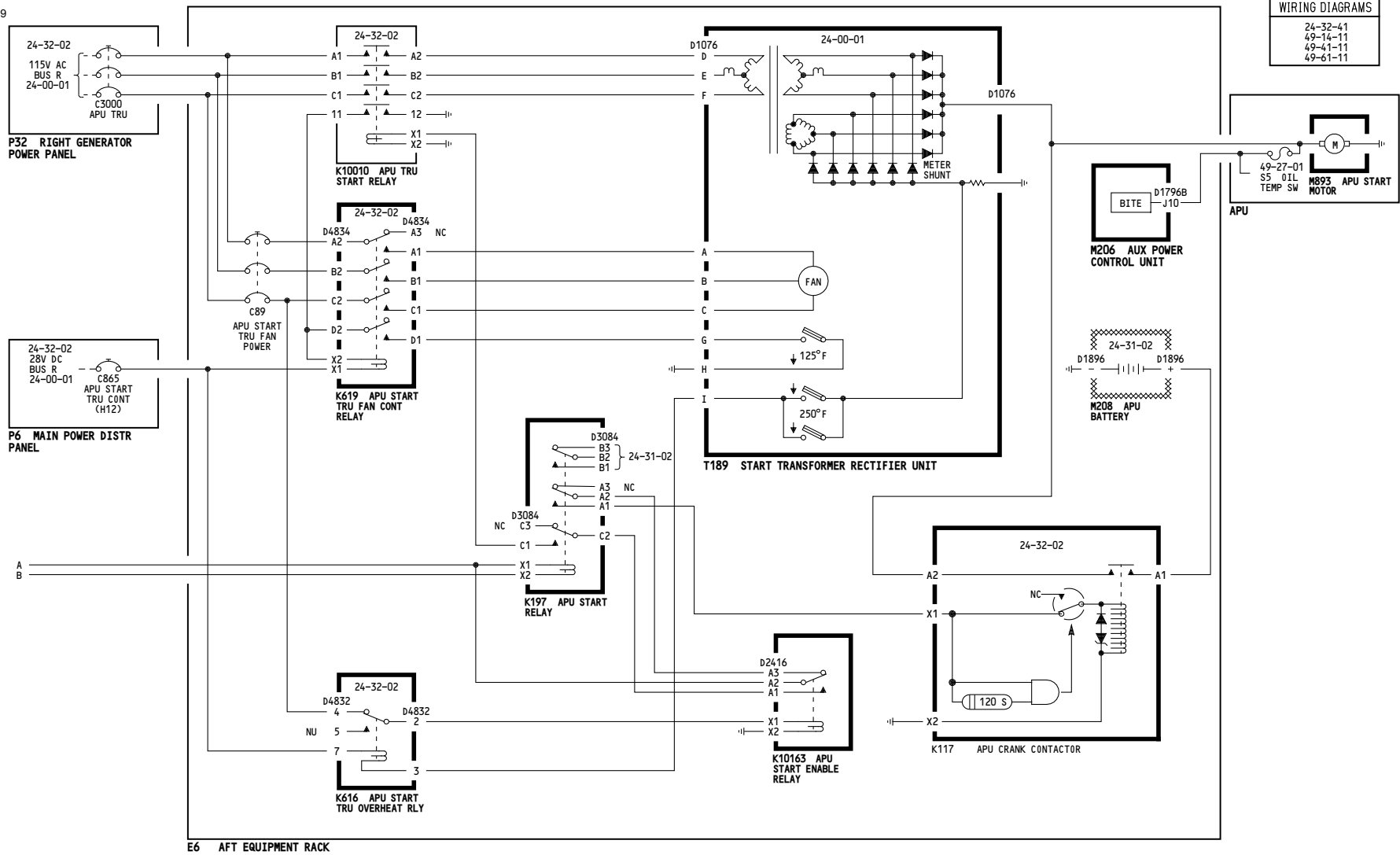
NOTES:

001-011	<p align="center"><b>APU IGNITION AND STARTING SYSTEM</b></p> <p align="center">D280N032S</p>
---------	---

**49-41-01**

Page 101.1  
Sheet 1  
Oct 09/2008

5329



WIRING DIAGRAMS	
24-32-41	
49-14-11	
49-41-11	
49-61-11	

001-011	<p><b>APU IGNITION AND STARTING SYSTEM</b></p> <p style="text-align: right;">D280N032S</p>
---------	--

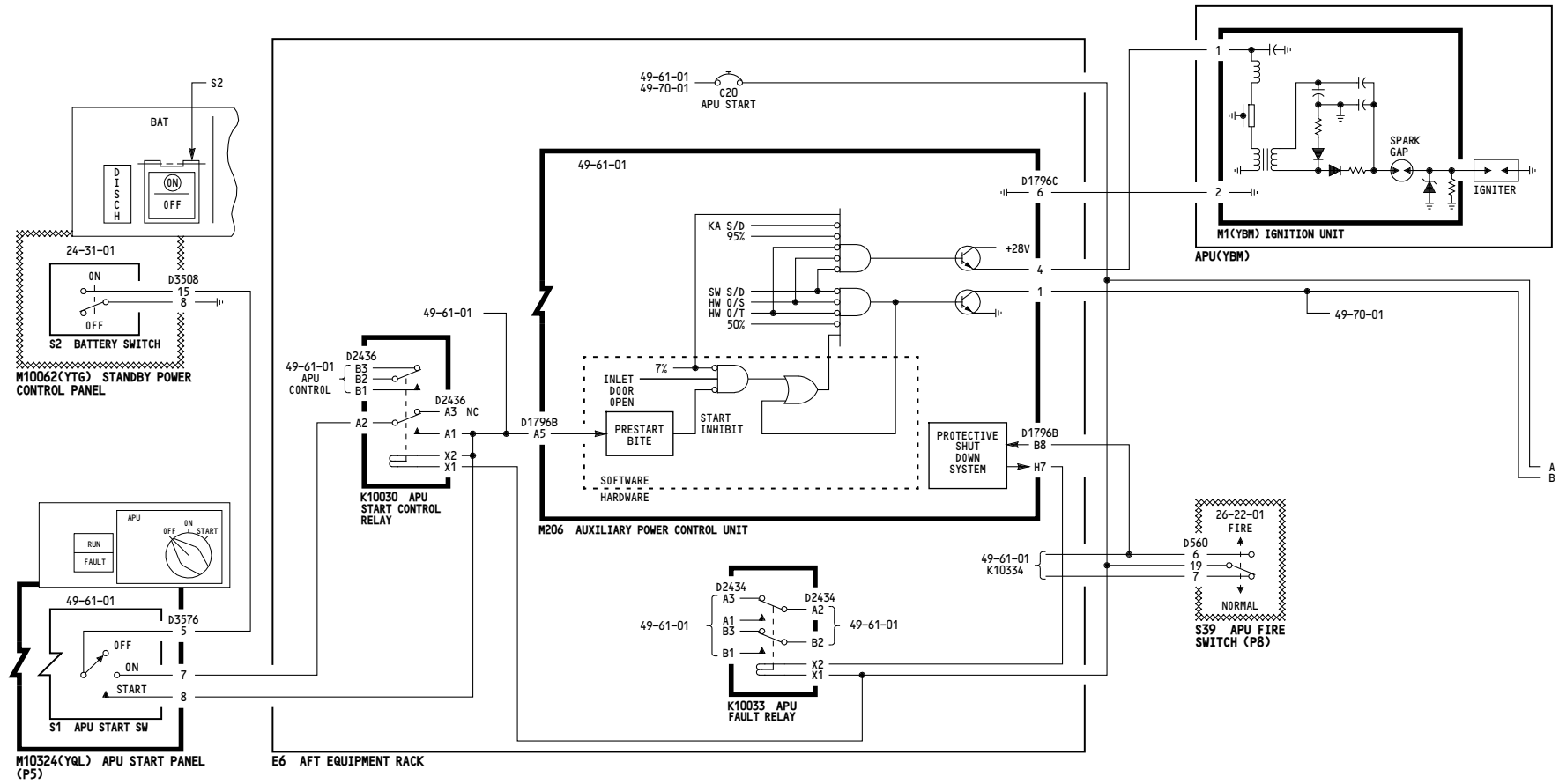
Incorporates  
49-0019 R01

**49-41-01**

Page 101.1  
Sheet 2  
Dec 18/2007



-A  
5314



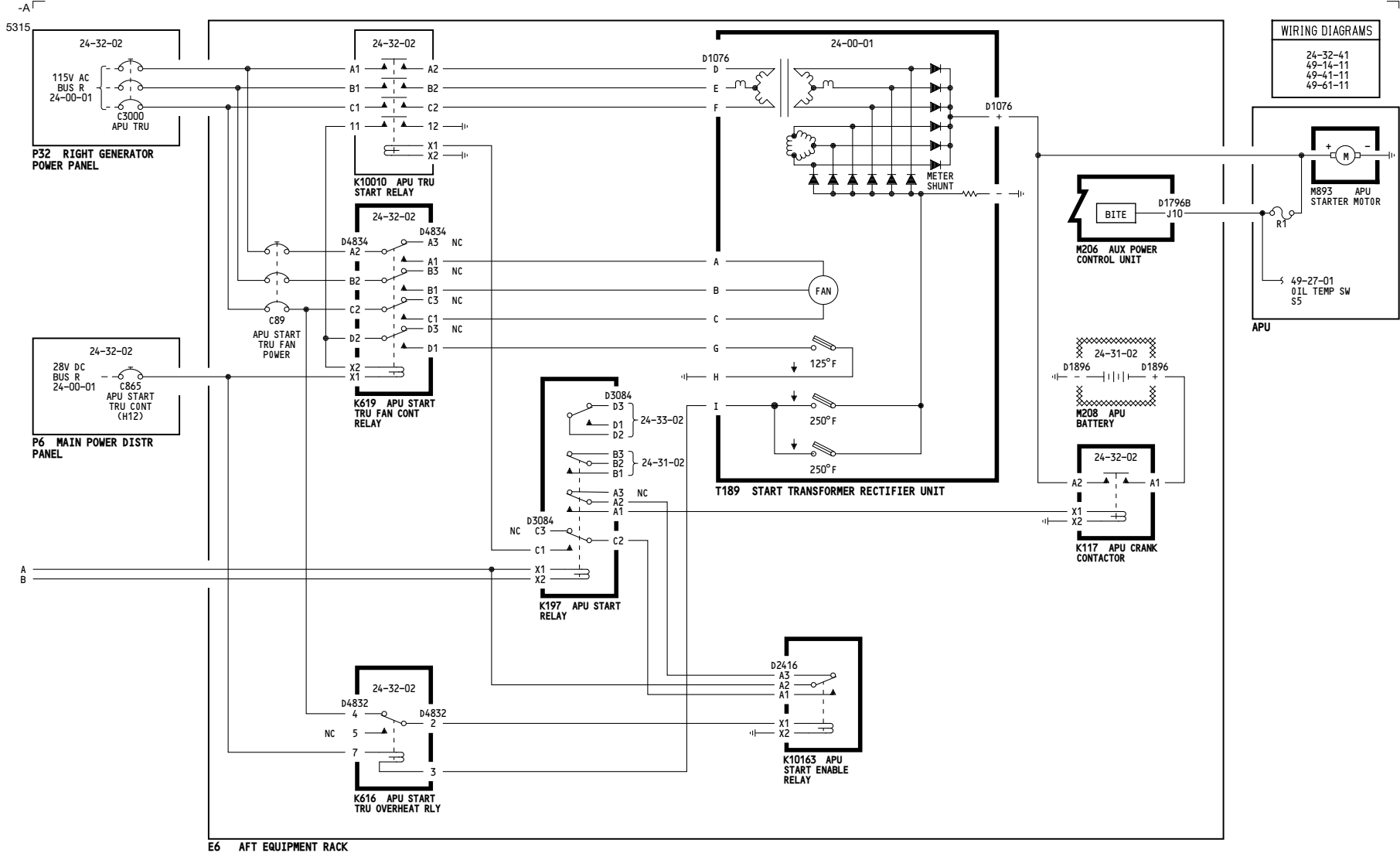
115-199

**APU IGNITION AND STARTING SYSTEM**

D280N032S

**49-41-01**

Page 102  
Sheet 1  
Jan 21/2005



115-199	<p align="center"><b>APU IGNITION AND STARTING SYSTEM</b></p> <p align="center">D280N032S</p>
---------	---

**WIRING DIAGRAMS**

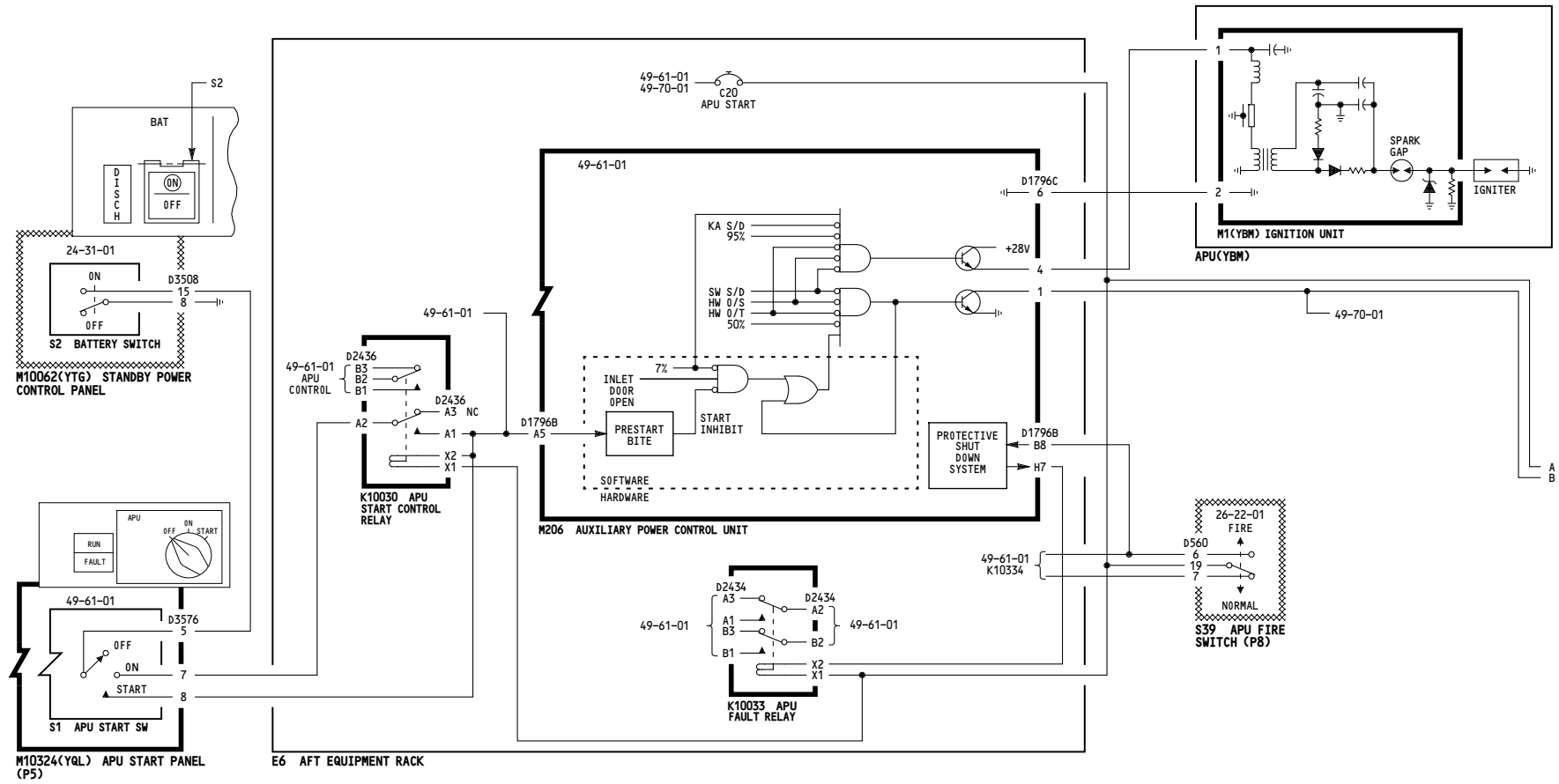
- 24-32-41
- 49-14-11
- 49-41-11
- 49-61-11

**APU**

M893 APU STARTER MOTOR

49-27-01 OIL TEMP SW S5

-A  
5314



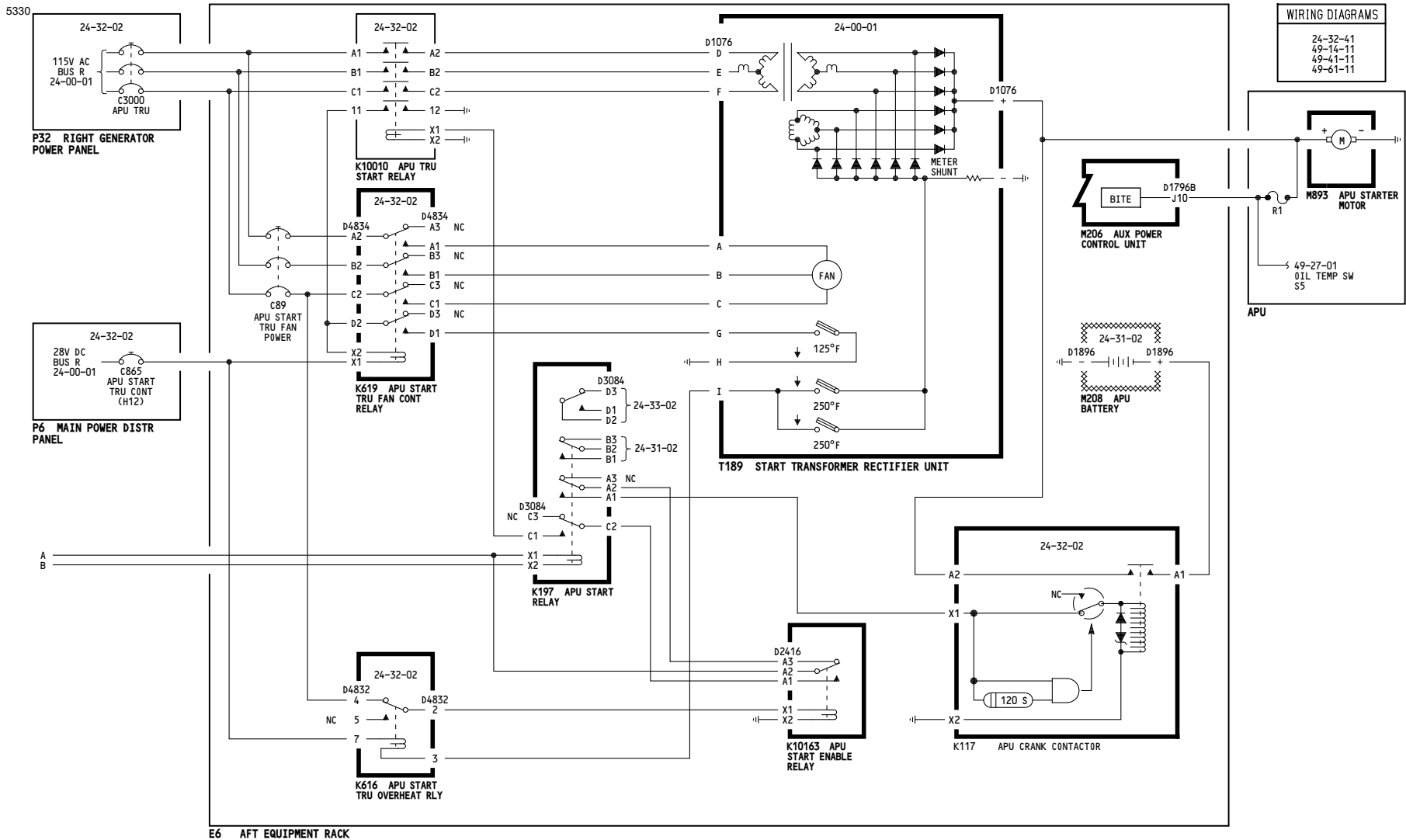
115

**APU IGNITION AND STARTING SYSTEM**

D280N032S

**49-41-01**

Page 102.1  
Sheet 1  
Dec 18/2007

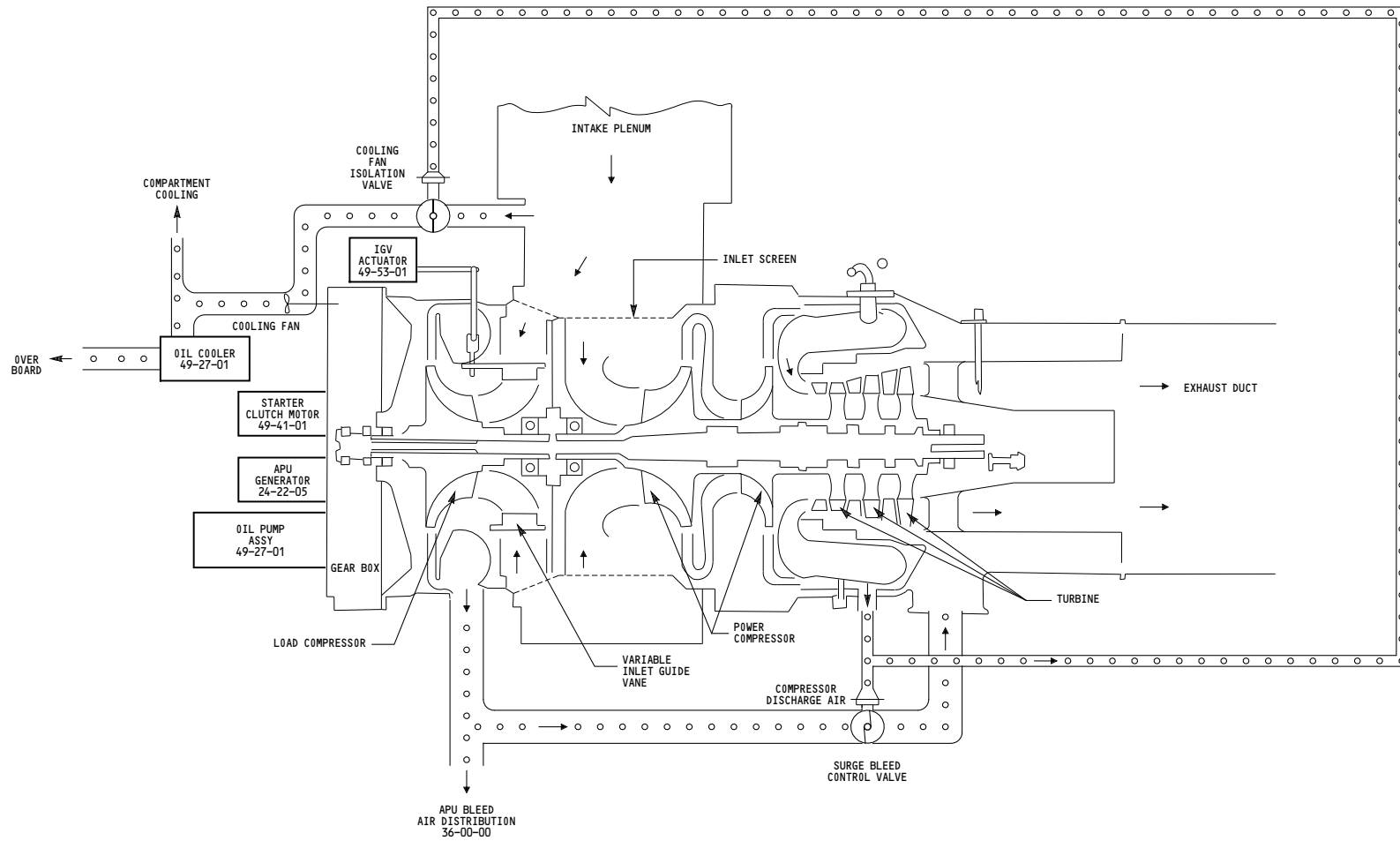


115	<p><b>APU IGNITION AND STARTING SYSTEM</b></p> <p style="font-size: small;">D280N032S</p>
-----	---

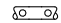
Incorporates  
 49-0019 R01

**49-41-01**

Page 102.1  
 Sheet 2  
 Dec 18/2007



**NOTES:**

 AIR

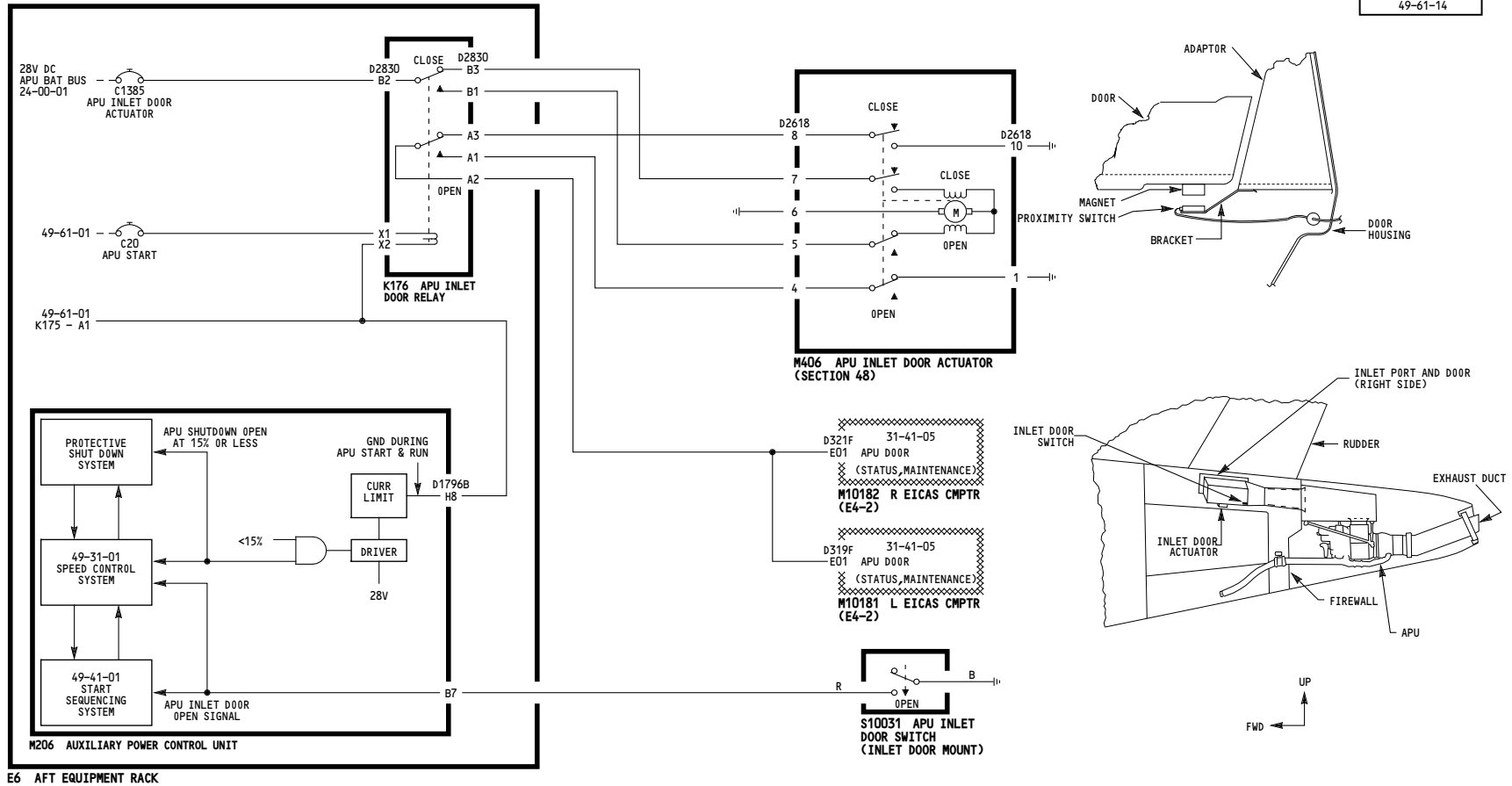
ALL	<p align="center"><b>APU COOLING AIR AND BLEED AIR SYSTEM</b></p> <p align="center">D280N032S</p>
-----	---

**49-52-01**

Page 101

Jan 21/2005

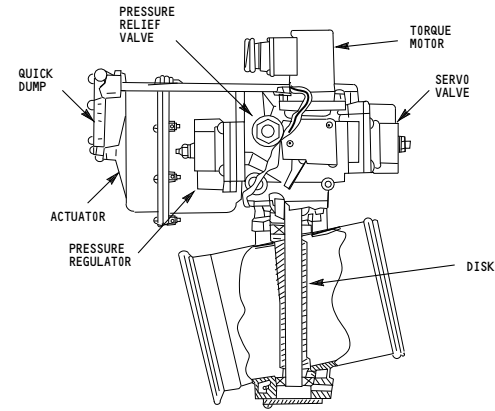
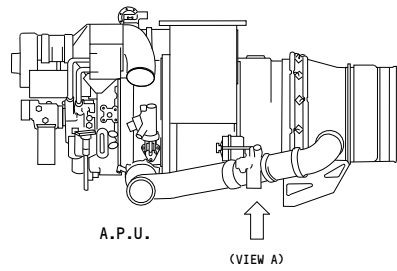
WIRING DIAGRAMS  
49-61-11  
49-61-14



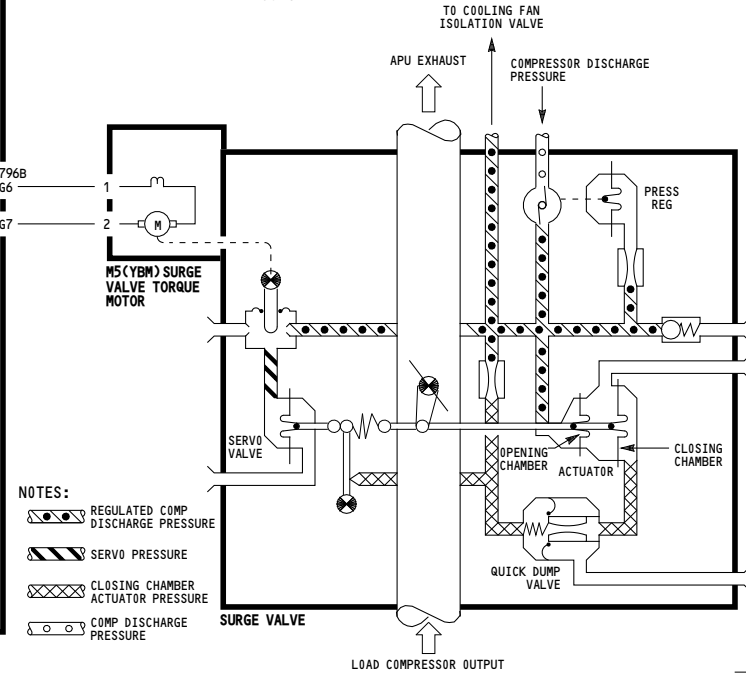
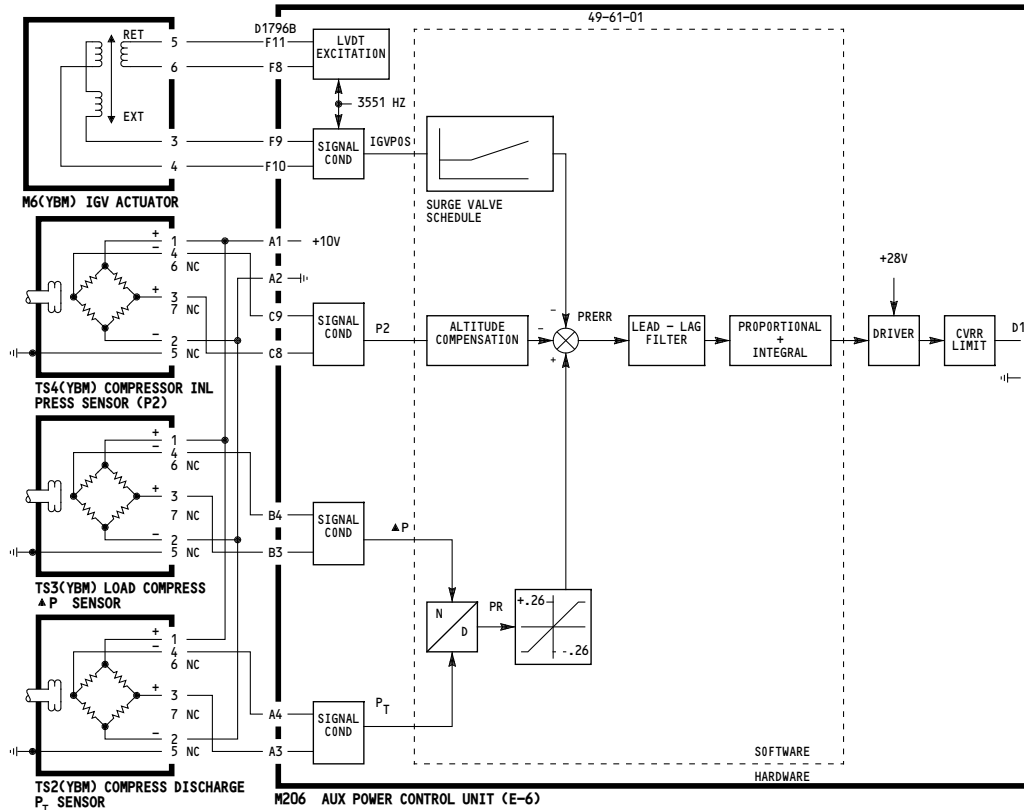
ALL	<p align="center"><b>APU INLET DOOR SYSTEM</b></p> <p align="center">D280N032S</p>
-----	--

**49-52-02**

WIRING DIAGRAMS  
49-14-11



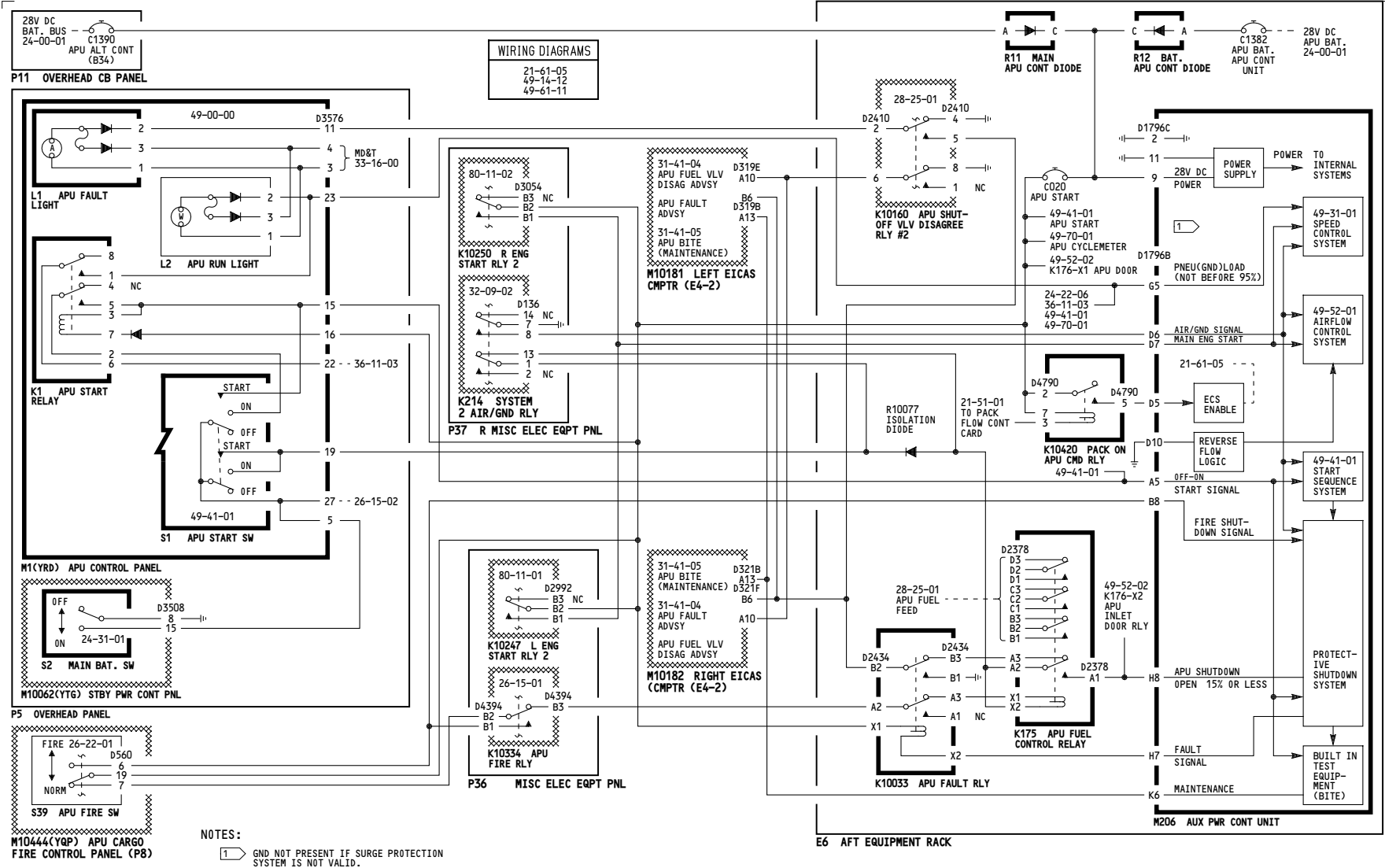
**SURGE VALVE**



ALL	<b>APU SURGE VALVE SYSTEM</b>
	D280N032S

**49-53-01**

5316



001-099	<b>APU CONTROL SYSTEM</b>
D280N032S	

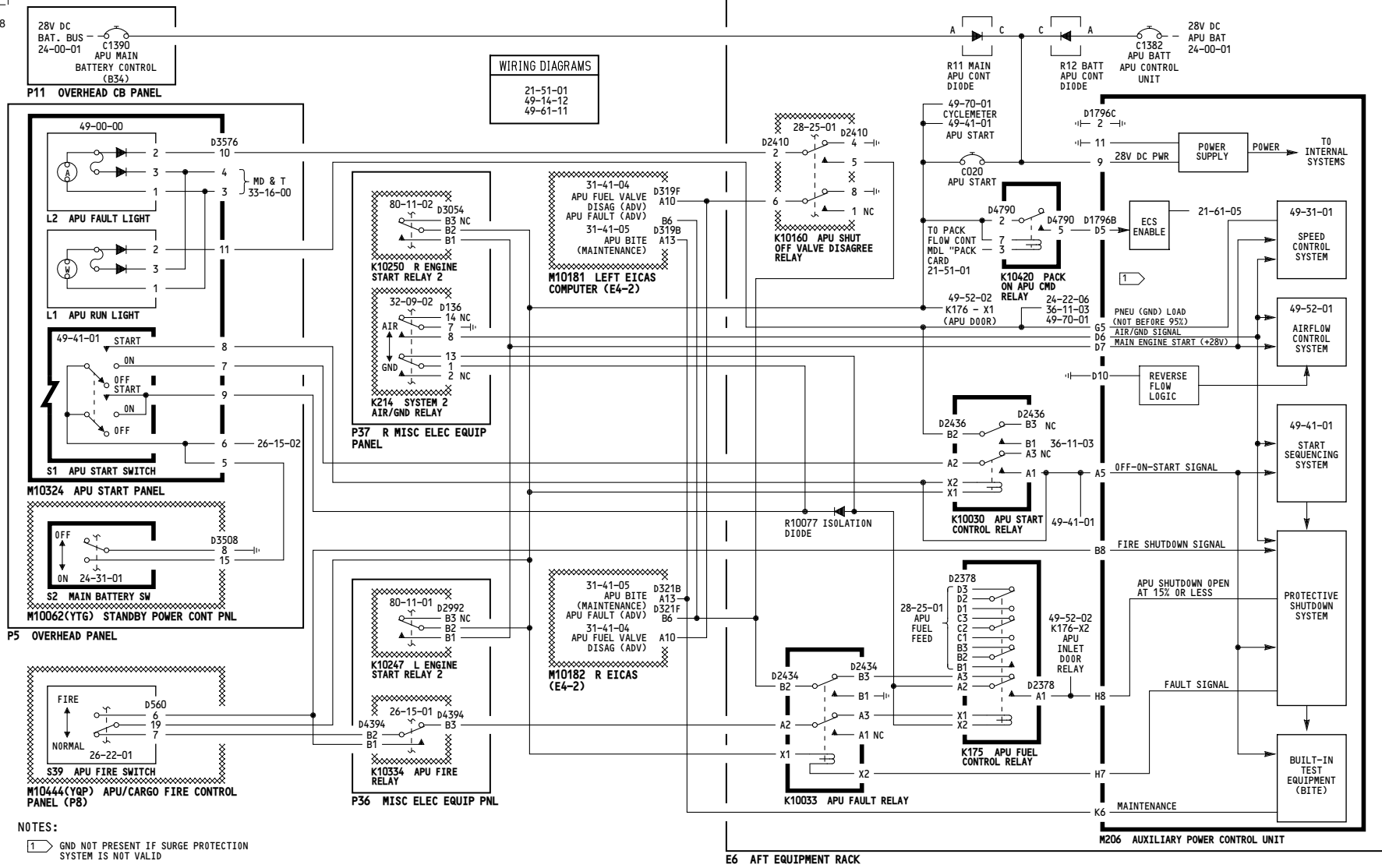
**49-61-01**

Page 101

Dec 18/2007



5318

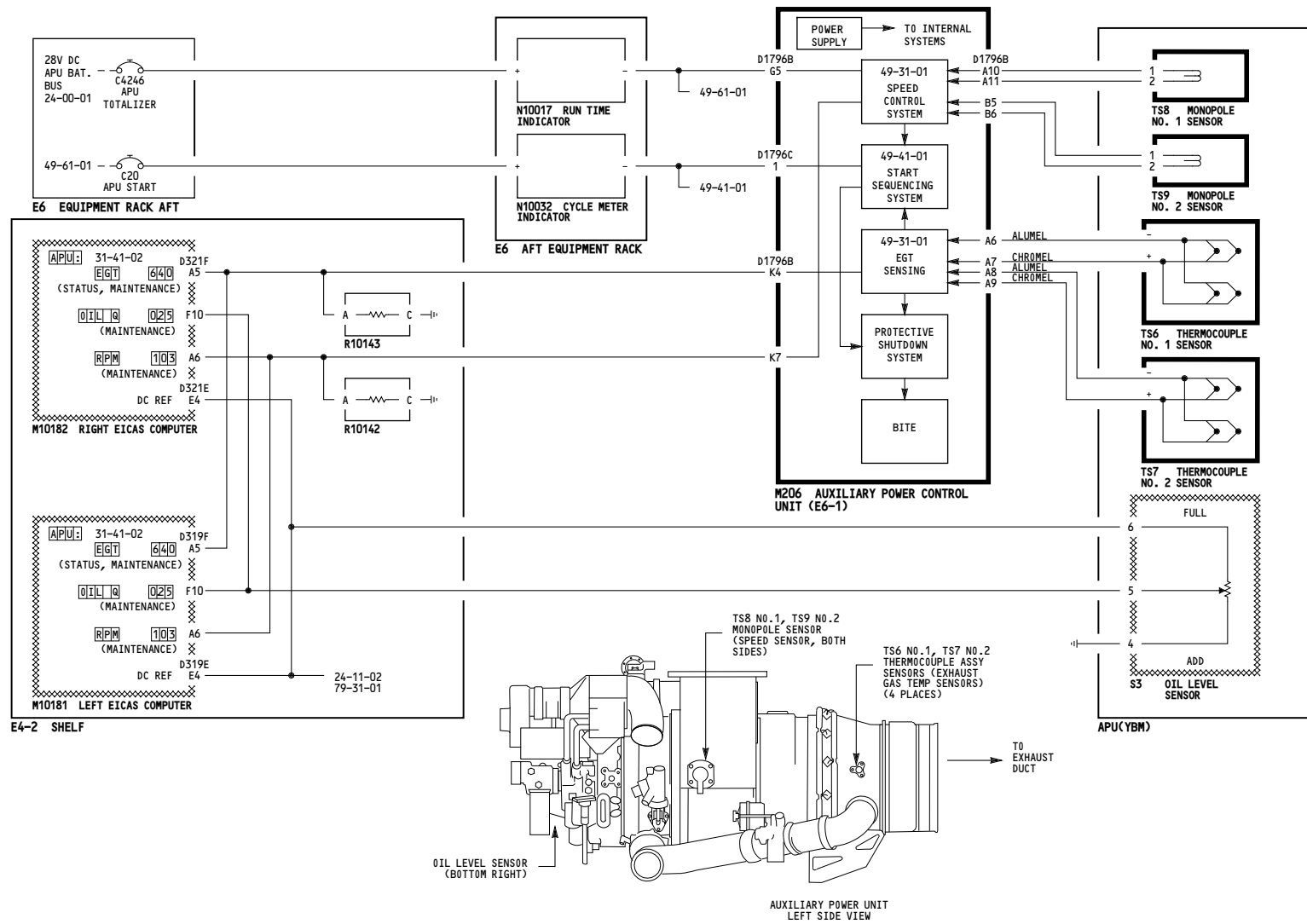


NOTES:  
1 GND NOT PRESENT IF SURGE PROTECTION SYSTEM IS NOT VALID

115-199	APU CONTROL SYSTEM
D280N032S	

49-61-01

5314



WIRING DIAGRAMS	
49-14-11	
49-71-11	
49-72-11	
49-73-11	
49-94-14	
79-31-11	

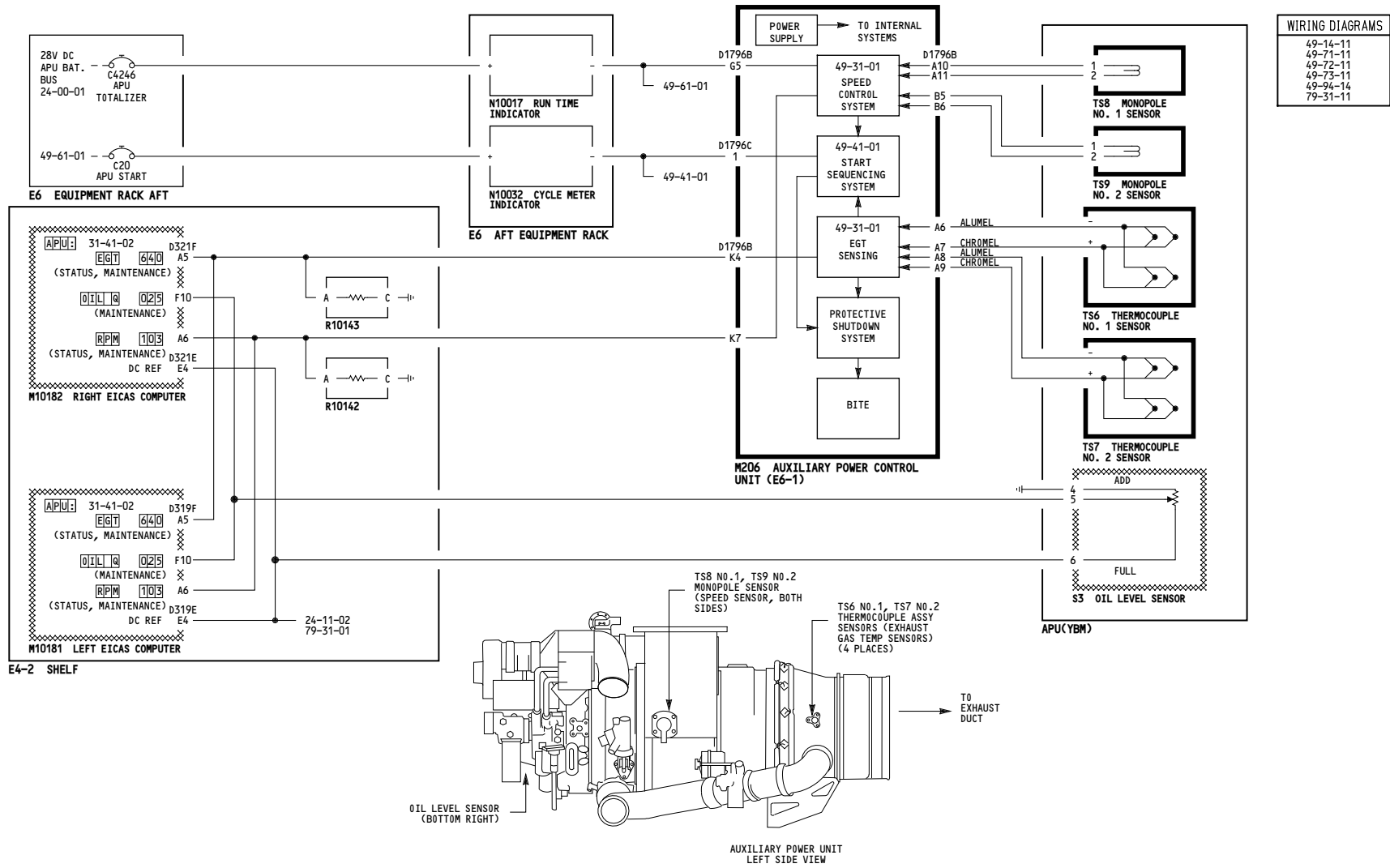
001-099	<b>APU INDICATION</b>
D280N032S	

**49-70-01**

Page 101

Dec 18/2007

-D  
5311



115-199	<b>APU INDICATION</b>
	D280N032S

**49-70-01**

Page 102

Jan 21/2005