

CHAPTER

49

AIRBORNE AUXILIARY POWER



CHAPTER 49
AIRBORNE AUXILIARY POWER

CH-SC-SU	Schem	Page	Sheet	Date	CH-SC-SU	Schem	Page	Sheet	Date
49-EFFECTIVE PAGES					49-41-01 (cont.)				
		1		May 06/2009			101.1	2	Dec 18/2007
		2		BLANK				1	May 06/2009
49-CONTENTS					D		102	1	May 06/2009
R		1		May 06/2009	D			2	May 06/2009
R		2		May 06/2009	D		102.1	1	May 06/2009
49-ALPHABETICAL INDEX					D			2	May 06/2009
		1		Dec 18/2007		49-52-01			
		2		BLANK	R		101		May 06/2009
	49-00-00					49-52-02			
R		101		May 06/2009	R		101		May 06/2009
D		102		May 06/2009		49-53-01			
	49-21-00				R		101		May 06/2009
R		101		May 06/2009		49-61-01			
	49-27-01				R		101		May 06/2009
R		101		May 06/2009	D		102		May 06/2009
D		102		May 06/2009		49-70-01			
A		101.1		May 06/2009	R		101		May 06/2009
	49-31-01				D		102		May 06/2009
R		101	1	May 06/2009					
R			2	May 06/2009					
	49-41-01								
R		101	1	May 06/2009					
R			2	May 06/2009					
		101.1	1	Oct 09/2008					

A = Added, R = Revised, D = Deleted, O = Overflow

49-EFFECTIVE PAGES



CHAPTER 49
AIRBORNE AUXILIARY POWER

Title	CH-SC-SU	Schem	Page	Sheet	Date	Effectivity
<u>AIRBORNE AUXILIARY POWER</u>						
AUXILIARY POWER UNIT - UNIT LOCATION	49-00-00		101		May 06/2009	ALL
<u>APU ENGINE</u>						
APU ENGINE	49-21-00		101		May 06/2009	ALL
<u>APU AND GENERATOR LUBRICATION SYSTEM</u>						
APU AND GENERATOR LUBRICATION SYSTEM	49-27-01		101		May 06/2009	ALL
			101.1		May 06/2009	001
<u>APU ENGINE FUEL SYSTEM</u>						
APU FUEL SYSTEM	49-31-01		101	1	May 06/2009	ALL
				2	May 06/2009	ALL
<u>APU IGNITION/STARTING SYSTEM</u>						
APU IGNITION AND STARTING SYSTEM	49-41-01		101	1	May 06/2009	ALL
				2	May 06/2009	ALL
			101.1	1	Oct 09/2008	001-011
				2	Dec 18/2007	001-011
<u>APU BLEED AIR SYSTEM</u>						
APU COOLING AIR AND BLEED AIR SYSTEM	49-52-01		101		May 06/2009	ALL
APU INLET DOOR SYSTEM	49-52-02		101		May 06/2009	ALL
<u>APU SURGE BLEED SYSTEM</u>						
APU SURGE VALVE SYSTEM	49-53-01		101		May 06/2009	ALL
<u>APU CONTROL SYSTEM</u>						
APU CONTROL SYSTEM	49-61-01		101		May 06/2009	ALL

**CHAPTER 49
AIRBORNE AUXILIARY POWER**

Title	CH-SC-SU	Schem	Page	Sheet	Date	Effectivity
<u>INDICATING</u>						
APU INDICATION	49-70-01		101		May 06/2009	ALL

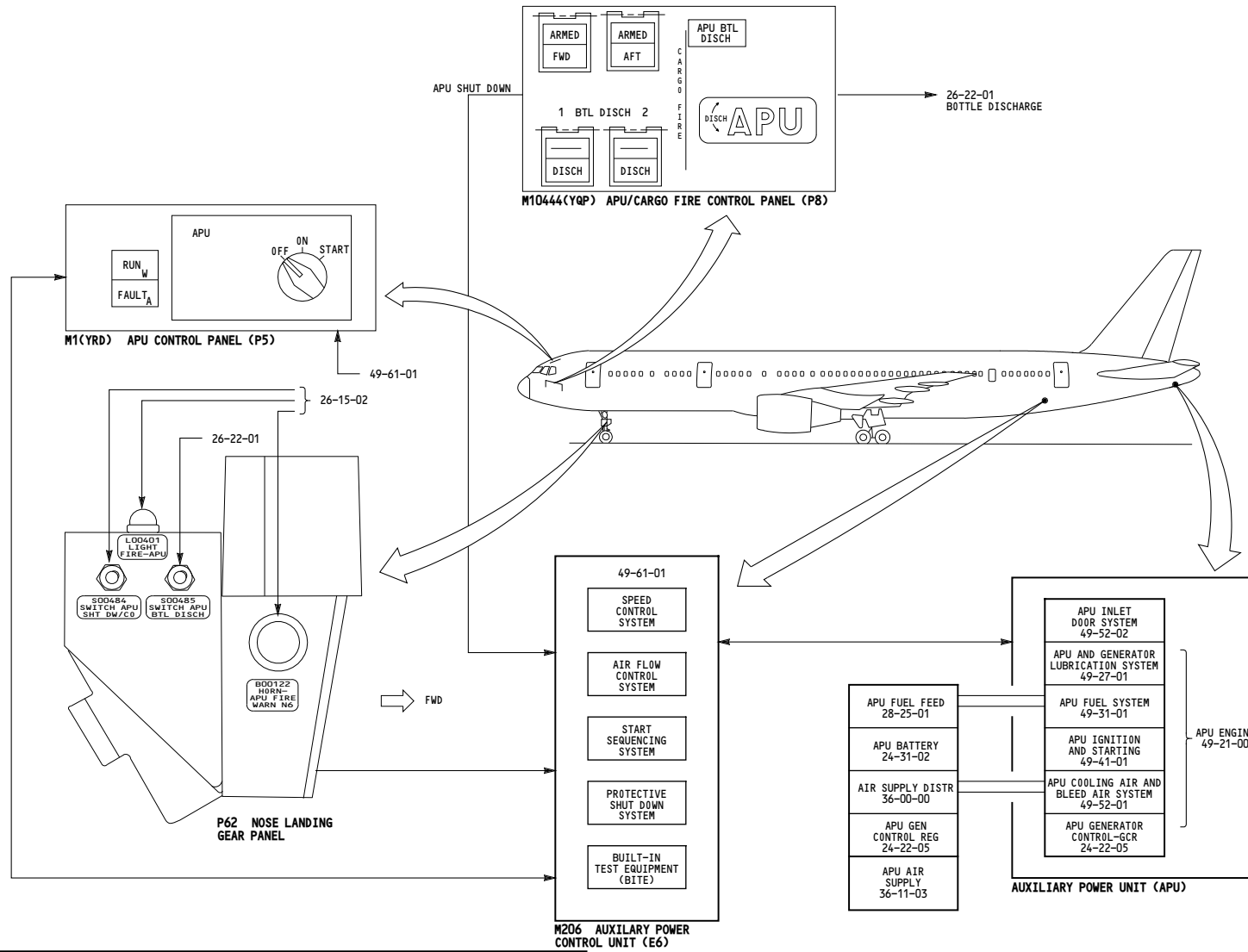
**CHAPTER 49
AIRBORNE AUXILIARY POWER**

CH-SC-SU	Title
49-27-01	APU AND GENERATOR LUBRICATION SYSTEM
49-61-01	APU CONTROL SYSTEM
49-52-01	APU COOLING AIR AND BLEED AIR SYSTEM
49-21-00	APU ENGINE
49-31-01	APU FUEL SYSTEM
49-41-01	APU IGNITION AND STARTING SYSTEM
49-70-01	APU INDICATION
49-52-02	APU INLET DOOR SYSTEM
49-53-01	APU SURGE VALVE SYSTEM
49-00-00	AUXILIARY POWER UNIT - UNIT LOCATION

CH-SC-SU	Title
----------	-------

49-ALPHABETICAL INDEX

5301

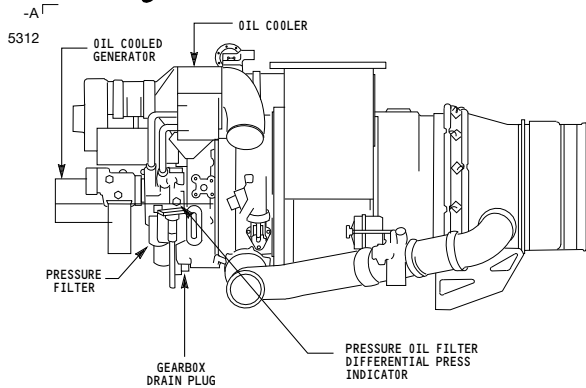


ALL	<p>AUXILIARY POWER UNIT - UNIT LOCATION</p> <p>D280N032S</p>
-----	---

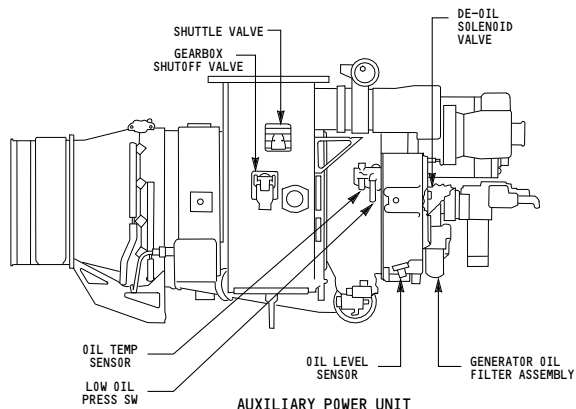
49-00-00

Page 101

May 06/2009

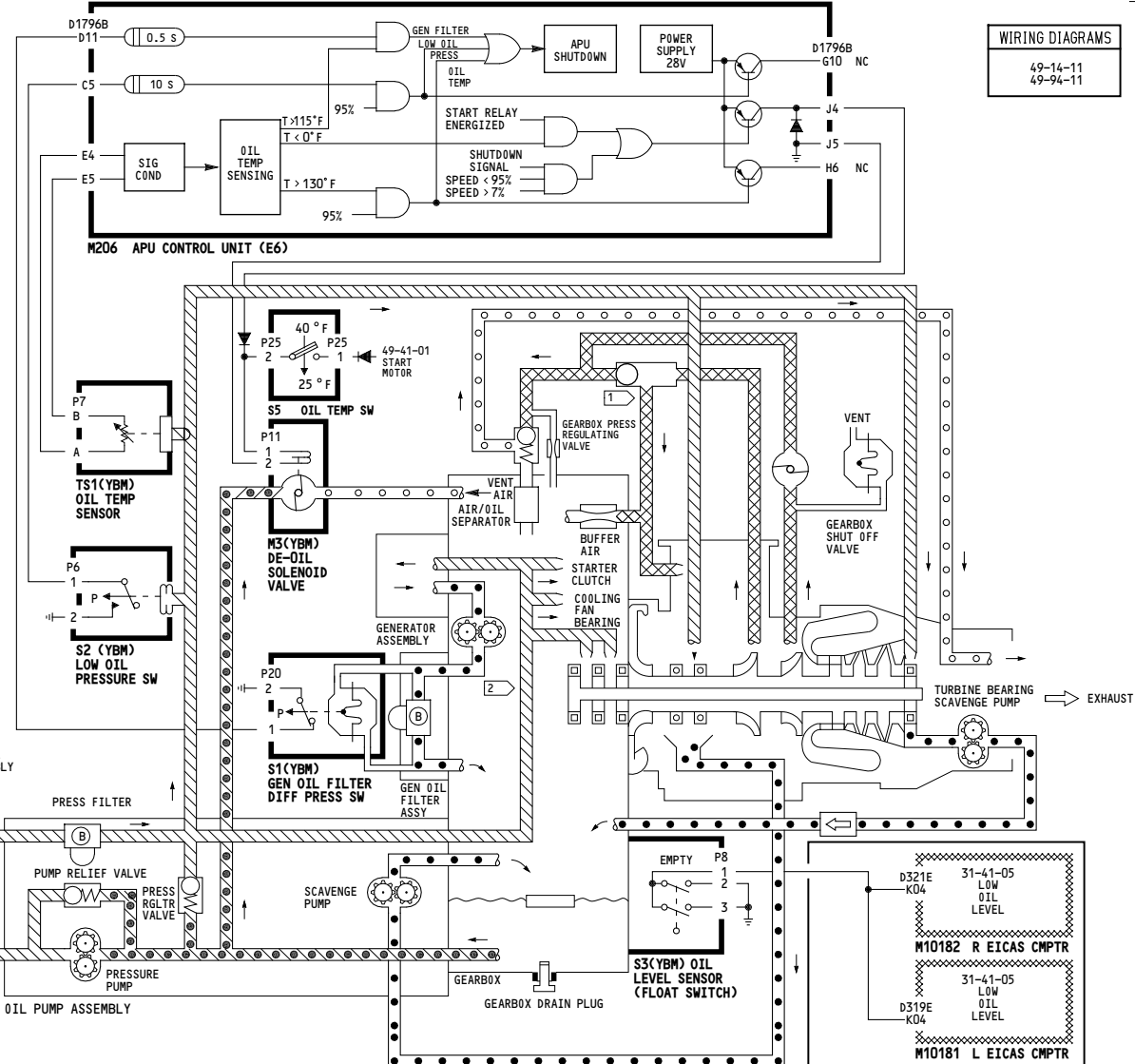


AUXILIARY POWER UNIT (LEFT SIDE VIEW)



AUXILIARY POWER UNIT (RIGHT SIDE VIEW)

- NOTES:**
- BALL BEARING
 - ROLLER BRG
 - OIL JET
 - SHUTTLE CHECK VALVE
 - GENERATOR SCAVENGE PUMP
 - PRESSURE
 - SUPPLY
 - SCAVENGE
 - PRESSURING
 - VENT



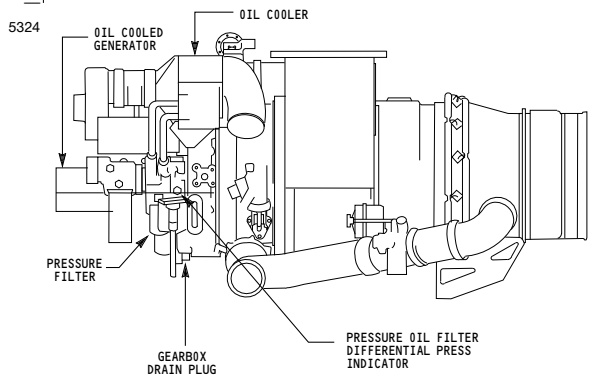
WIRING DIAGRAMS
49-14-11
49-94-11

ALL

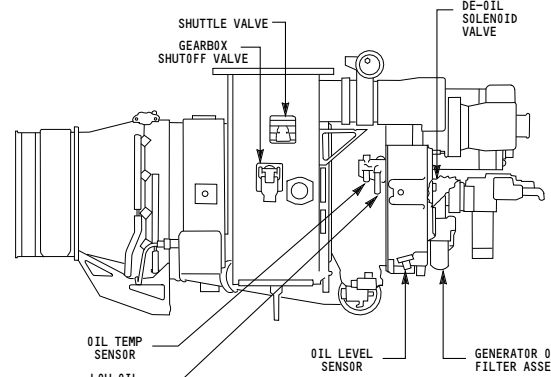
APU AND GENERATOR LUBRICATION SYSTEM

D280N032S

E4-2 SHELF **49-27-01**



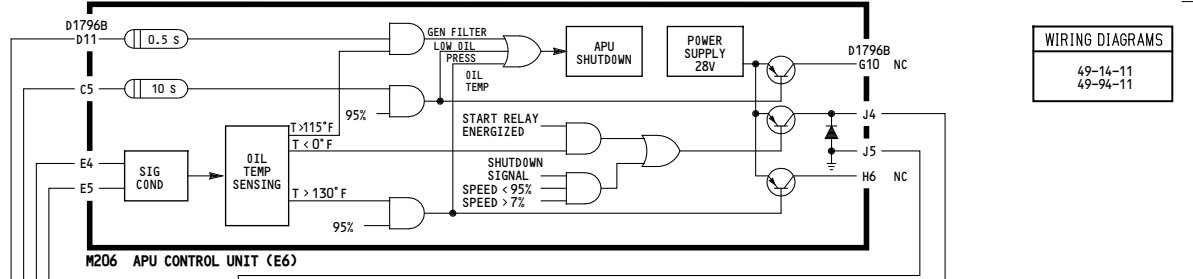
AUXILIARY POWER UNIT (LEFT SIDE VIEW)



AUXILIARY POWER UNIT (RIGHT SIDE VIEW)

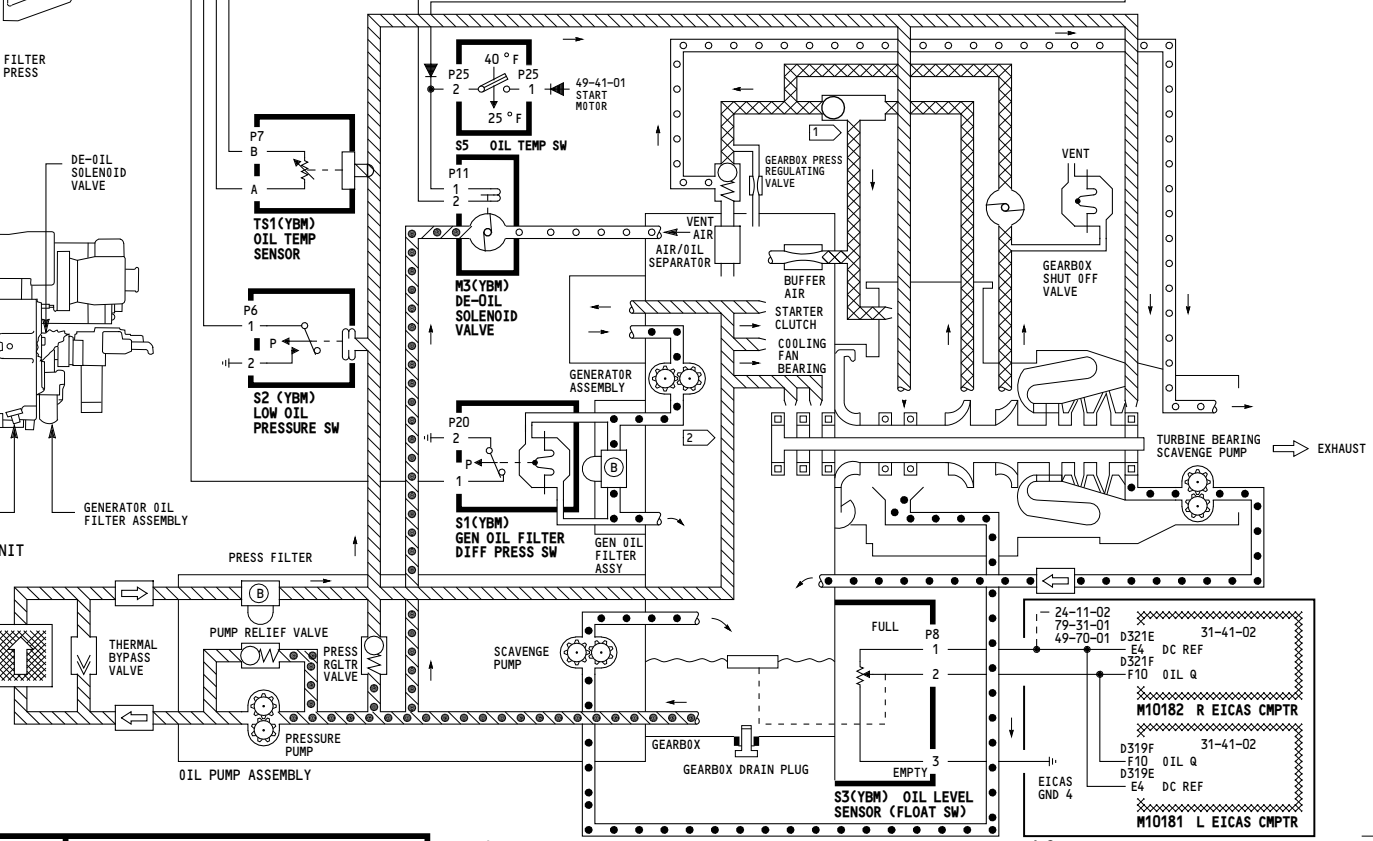
NOTES:

- BALL BEARING
- ROLLER BRG
- OIL JET
- SHUTTLE CHECK VALVE
- GENERATOR SCAVENGE PUMP
- PRESSURE
- SUPPLY
- SCAVENGE
- PRESSURING
- VENT
- OIL LINE
- AIR LINE



M206 APU CONTROL UNIT (E6)

WIRING DIAGRAMS
49-14-11
49-94-11

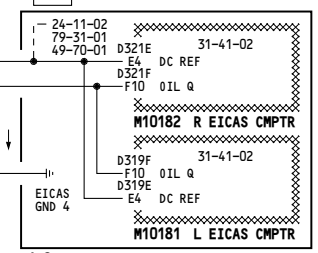


001

APU AND GENERATOR LUBRICATION SYSTEM

D280N032S

Incorporates
31-0184 R02

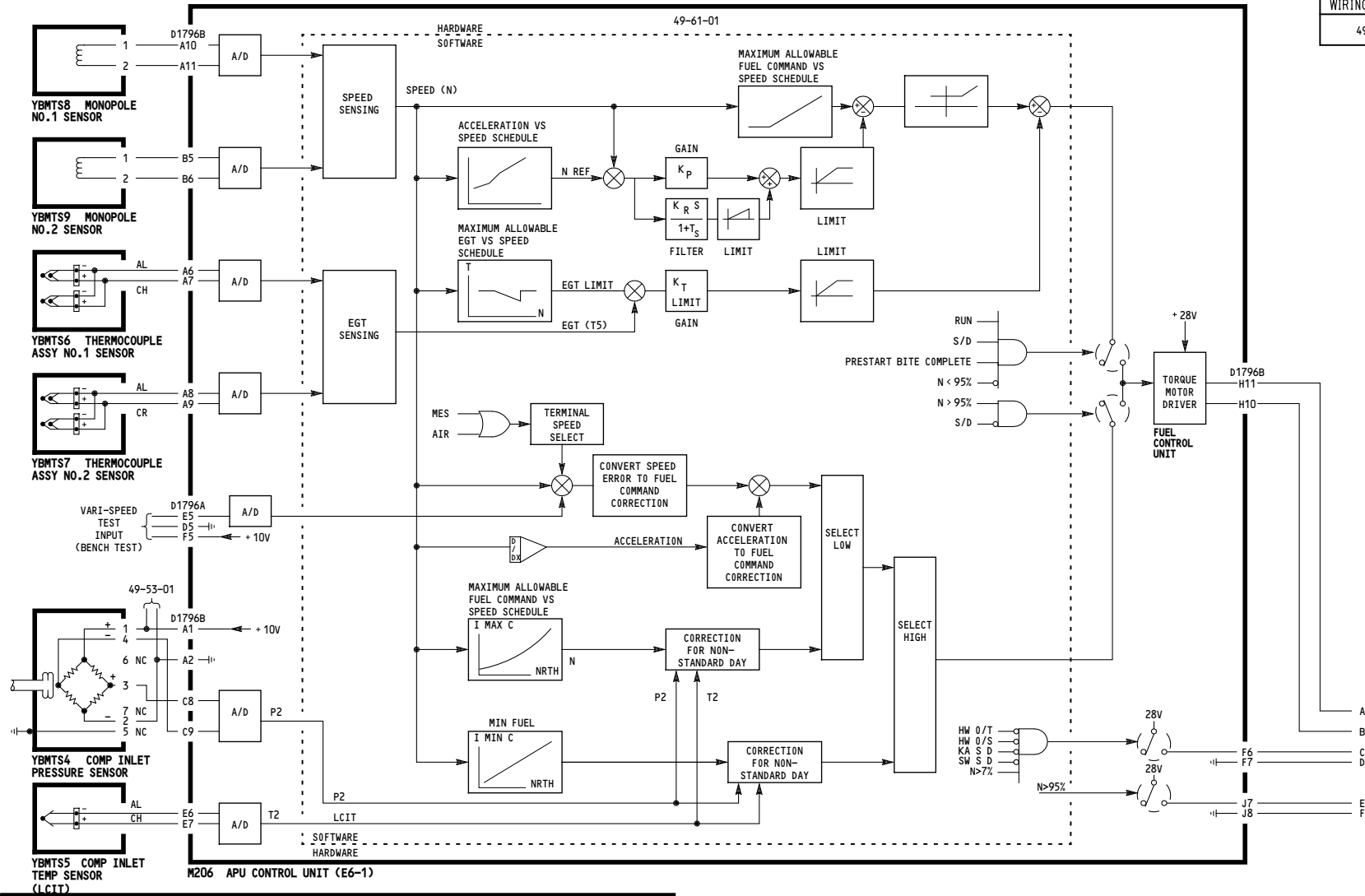


49-27-01

THIS PAGE INTENTIONALLY LEFT BLANK

-A
5300

WIRING DIAGRAMS
49-14-11

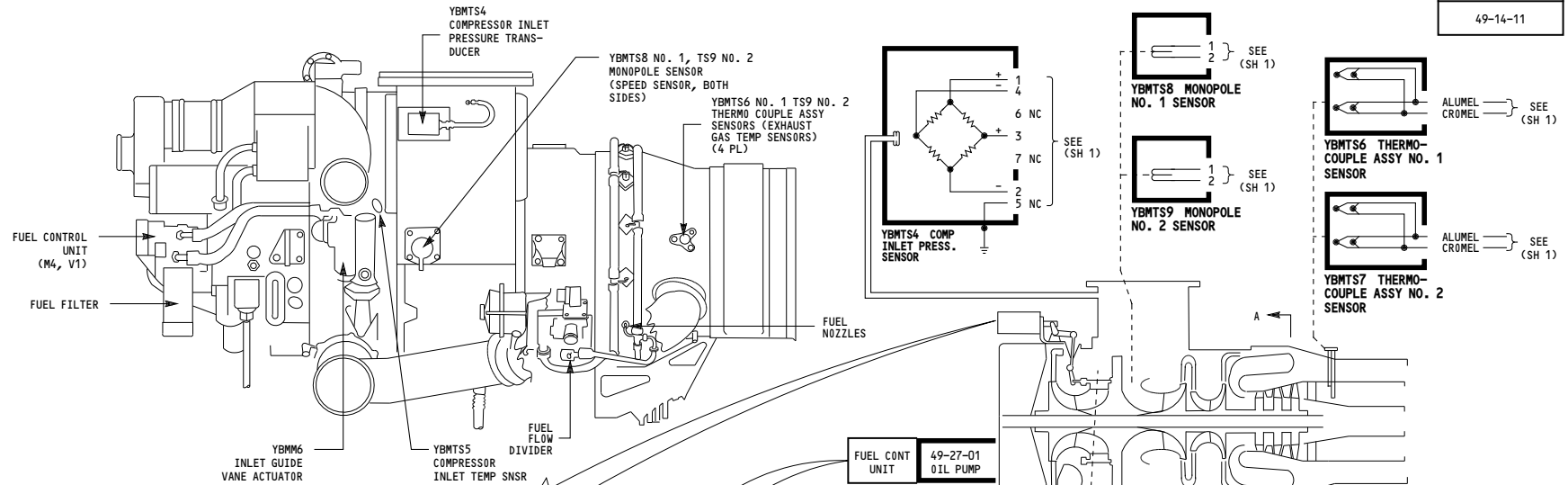


49-31-01

Page 101
Sheet 1
May 06/2009

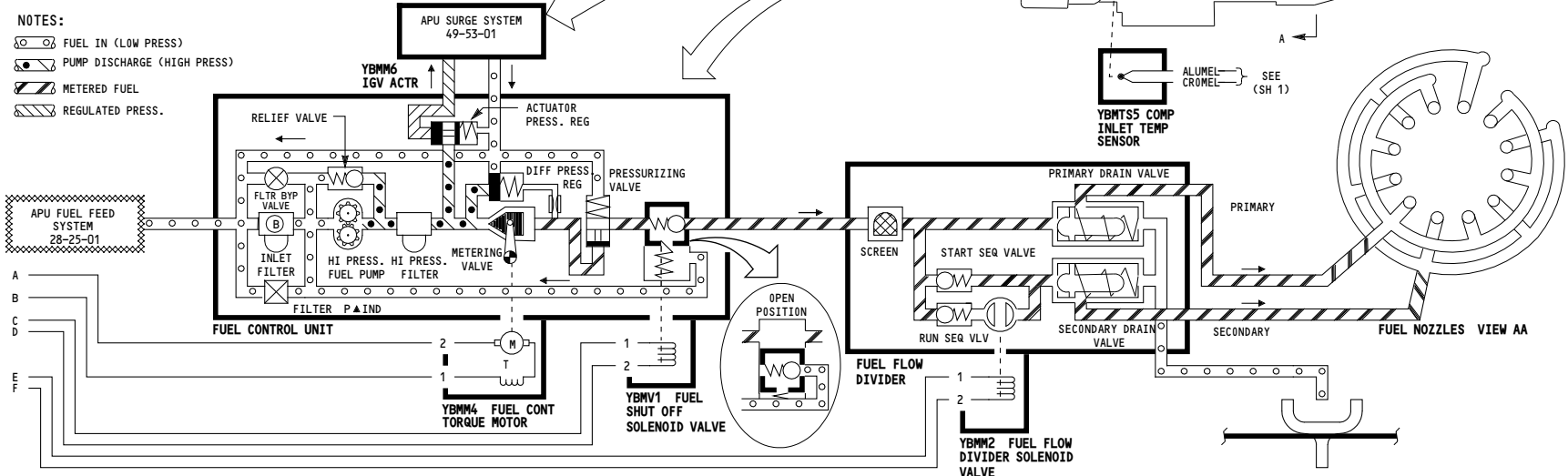
5300

WIRING DIAGRAMS
49-14-11



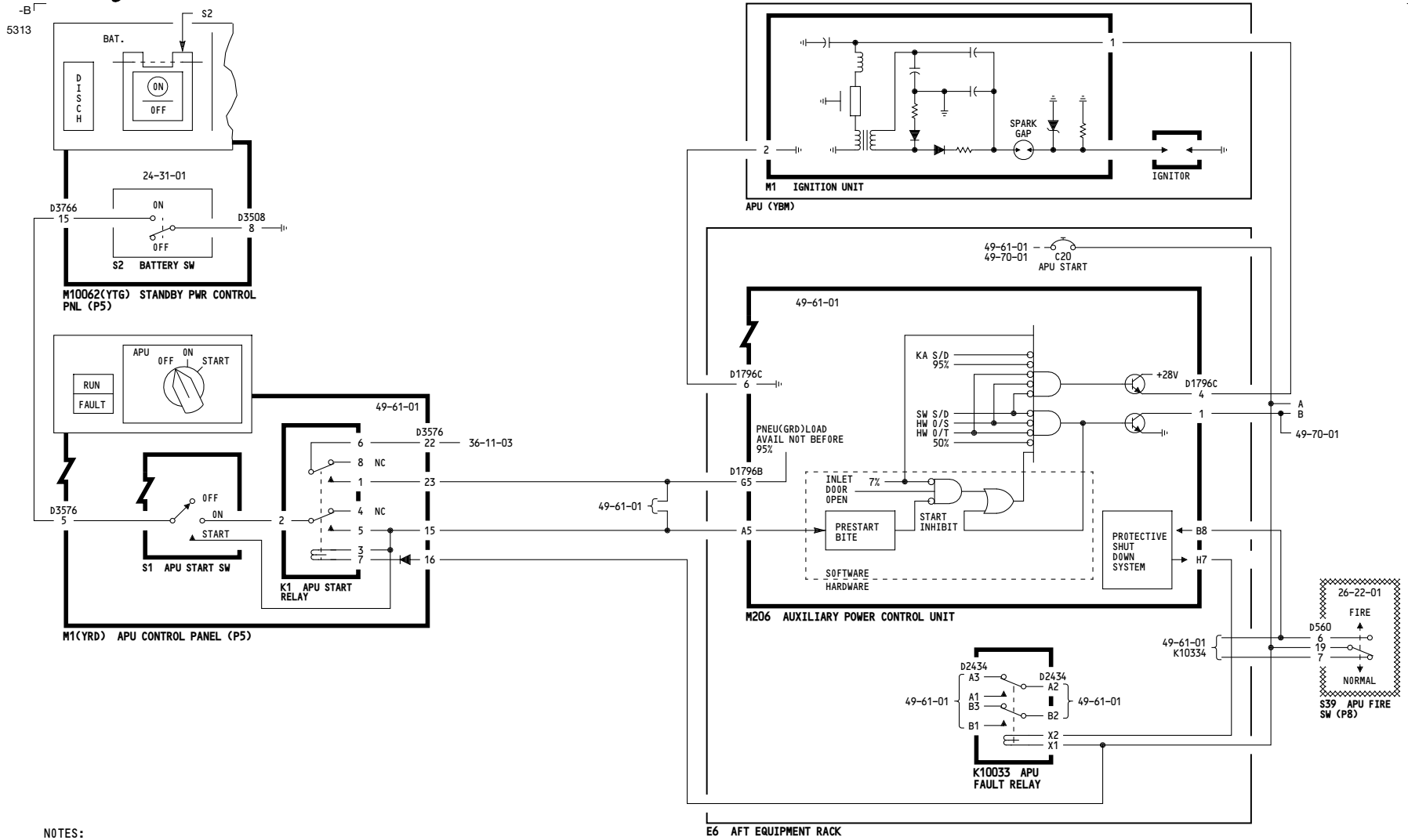
NOTES:

- FUEL IN (LOW PRESS)
- PUMP DISCHARGE (HIGH PRESS)
- METERED FUEL
- REGULATED PRESS.



ALL	APU FUEL SYSTEM
	D280N032S

49-31-01



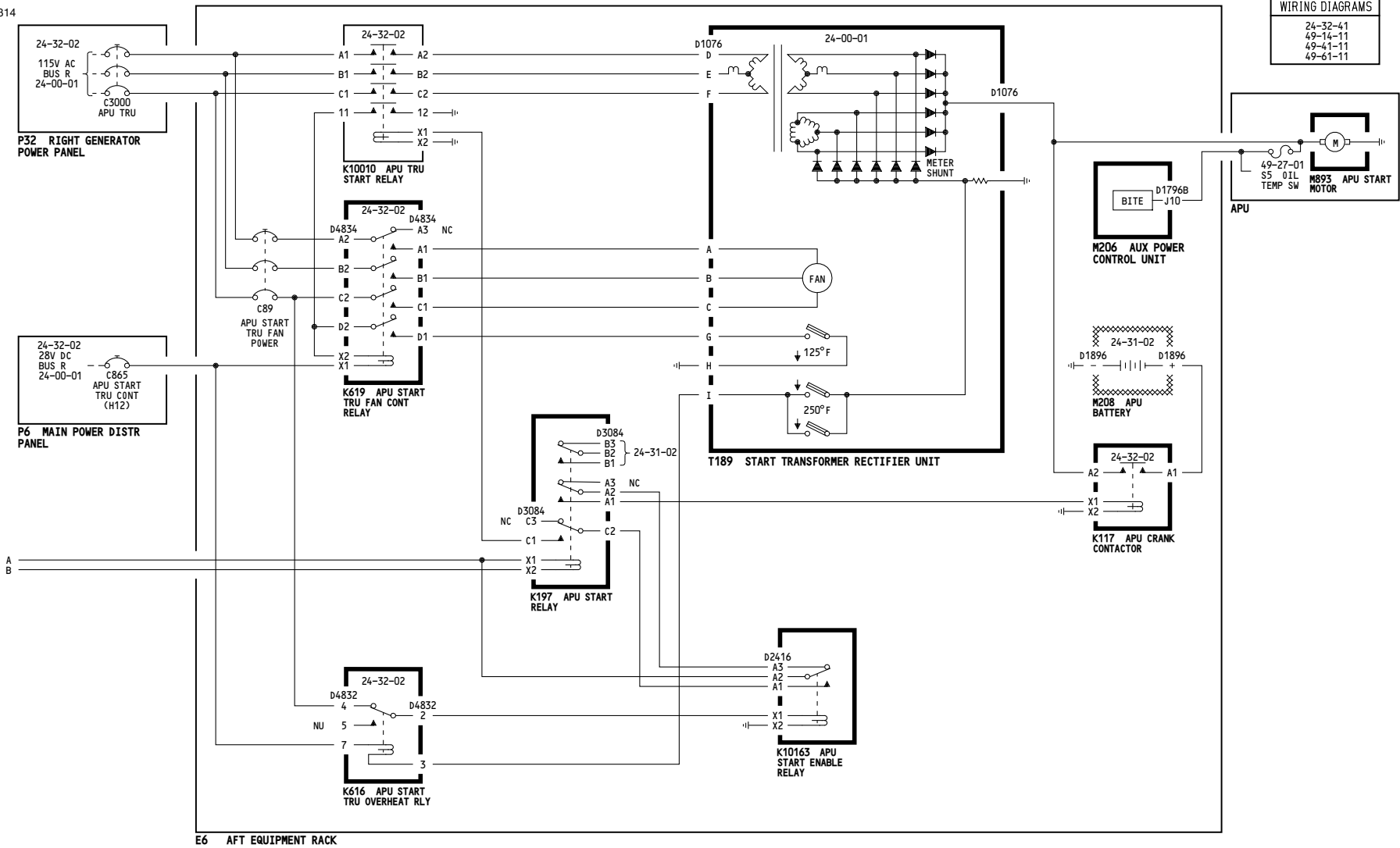
NOTES:

ALL	<p align="center">APU IGNITION AND STARTING SYSTEM</p> <p align="center">D280N032S</p>
-----	---

49-41-01

Page 101
Sheet 1
May 06/2009

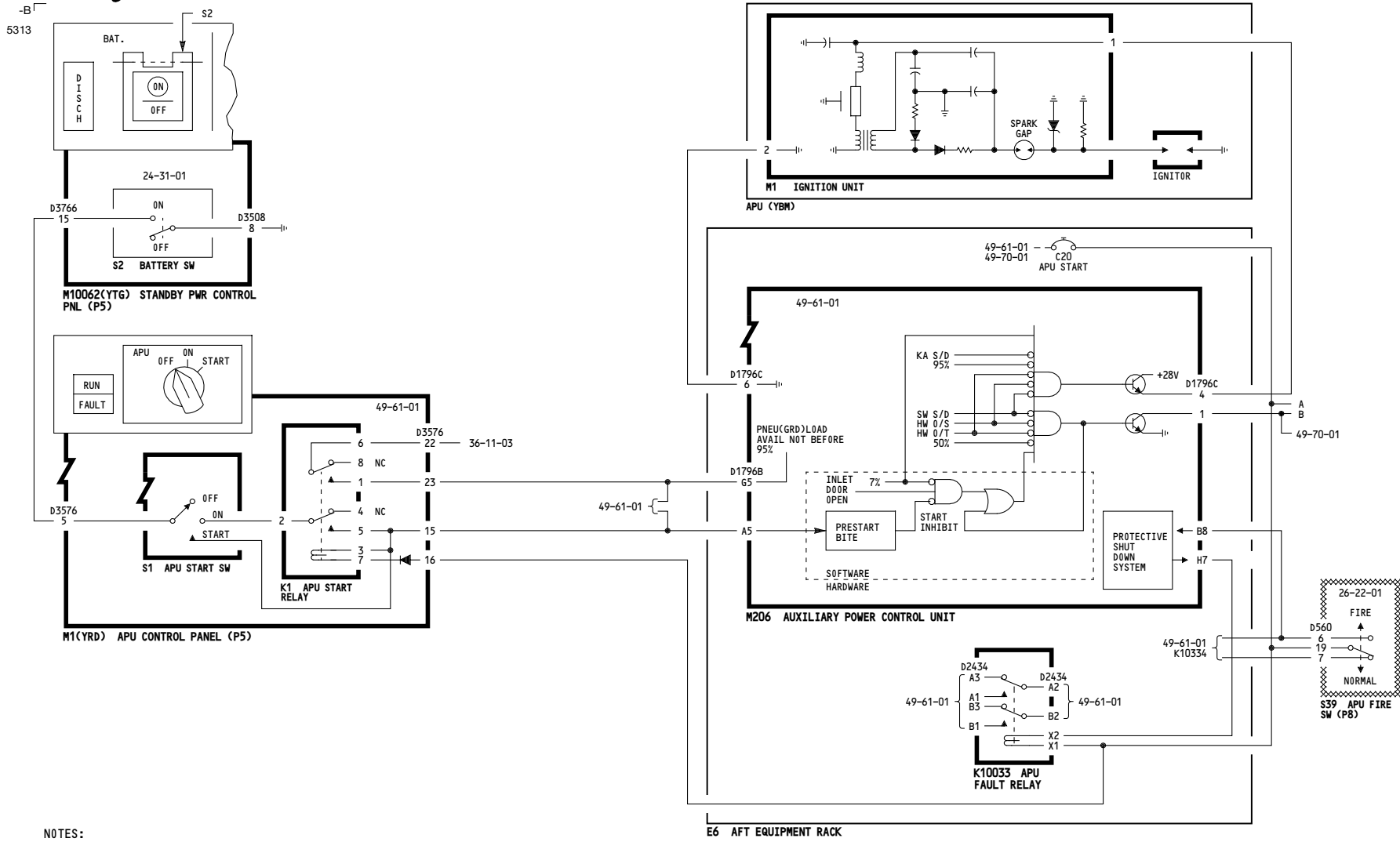
-B
5314



ALL	<p>APU IGNITION AND STARTING SYSTEM</p> <p>D280N032S</p>
-----	---

49-41-01

Page 101
Sheet 2
May 06/2009



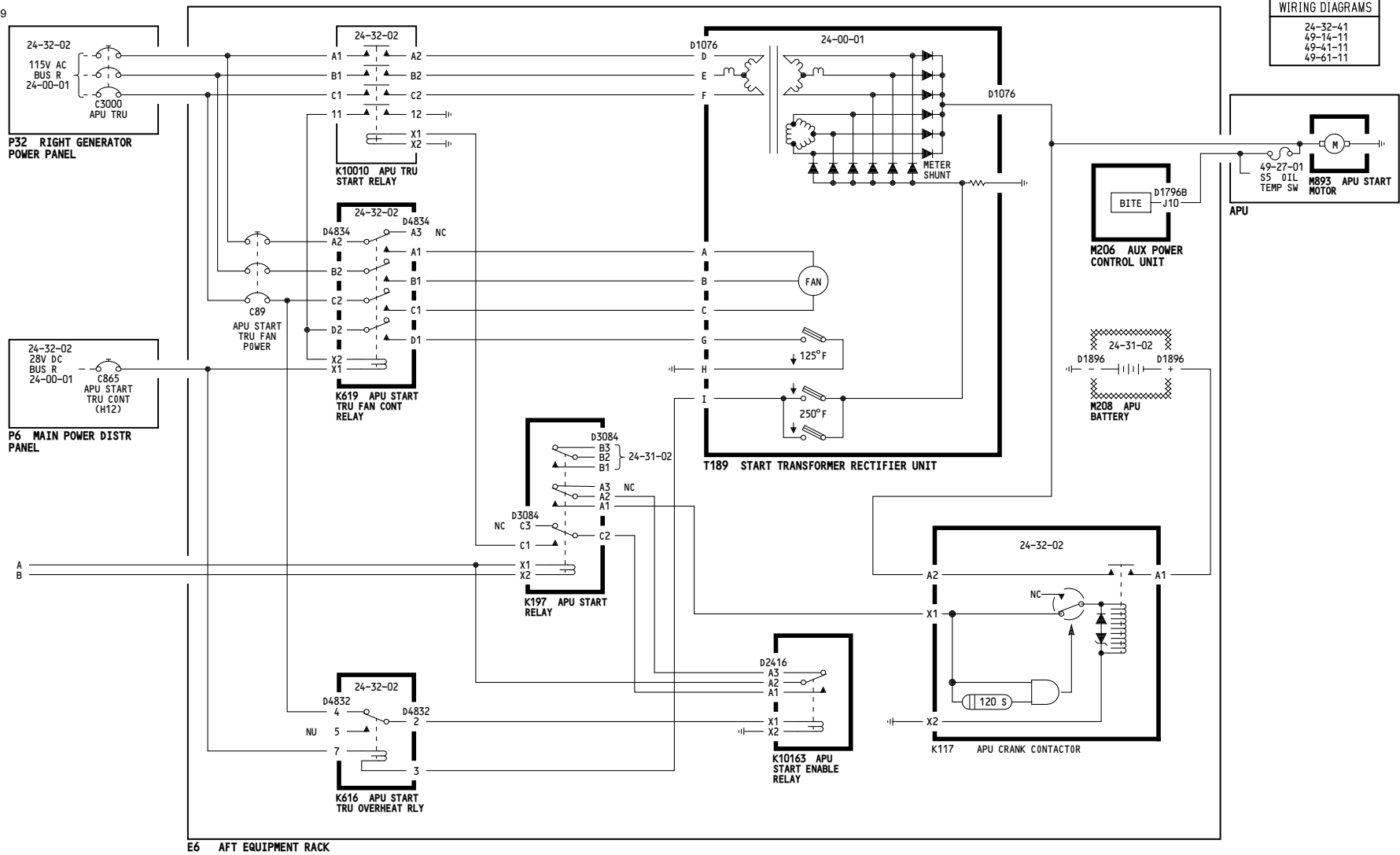
NOTES:

001-011	<p align="center">APU IGNITION AND STARTING SYSTEM</p> <p align="center">D280N032S</p>
---------	---

49-41-01

Page 101.1
Sheet 1
Oct 09/2008

5329

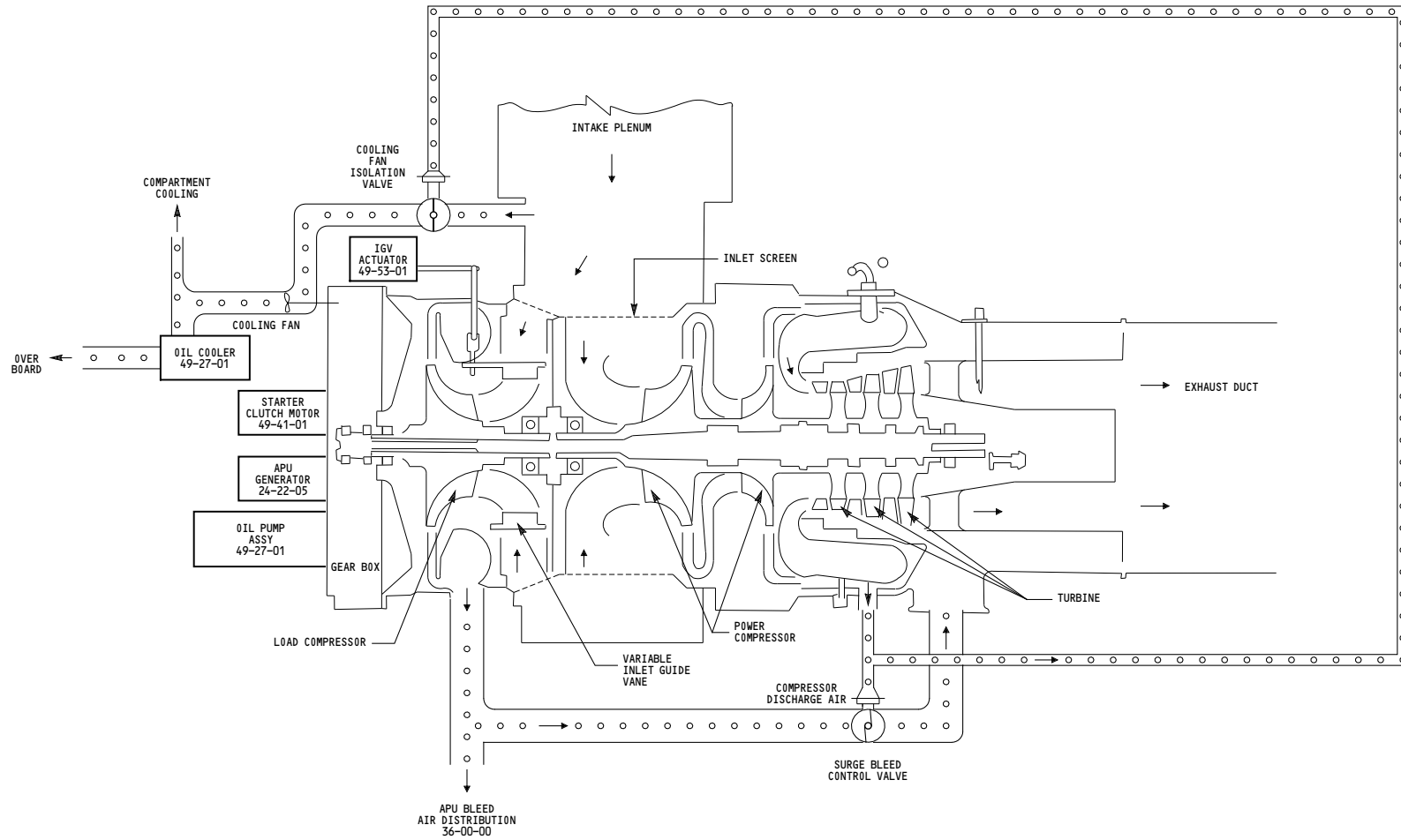


001-011	<p align="center">APU IGNITION AND STARTING SYSTEM</p> <p align="center">D280N032S</p>
---------	---

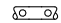
Incorporates
 49-0019 R01

49-41-01

Page 101.1
 Sheet 2
 Dec 18/2007



NOTES:

 AIR

ALL	<p align="center">APU COOLING AIR AND BLEED AIR SYSTEM</p> <p align="center">D280N032S</p>
-----	---

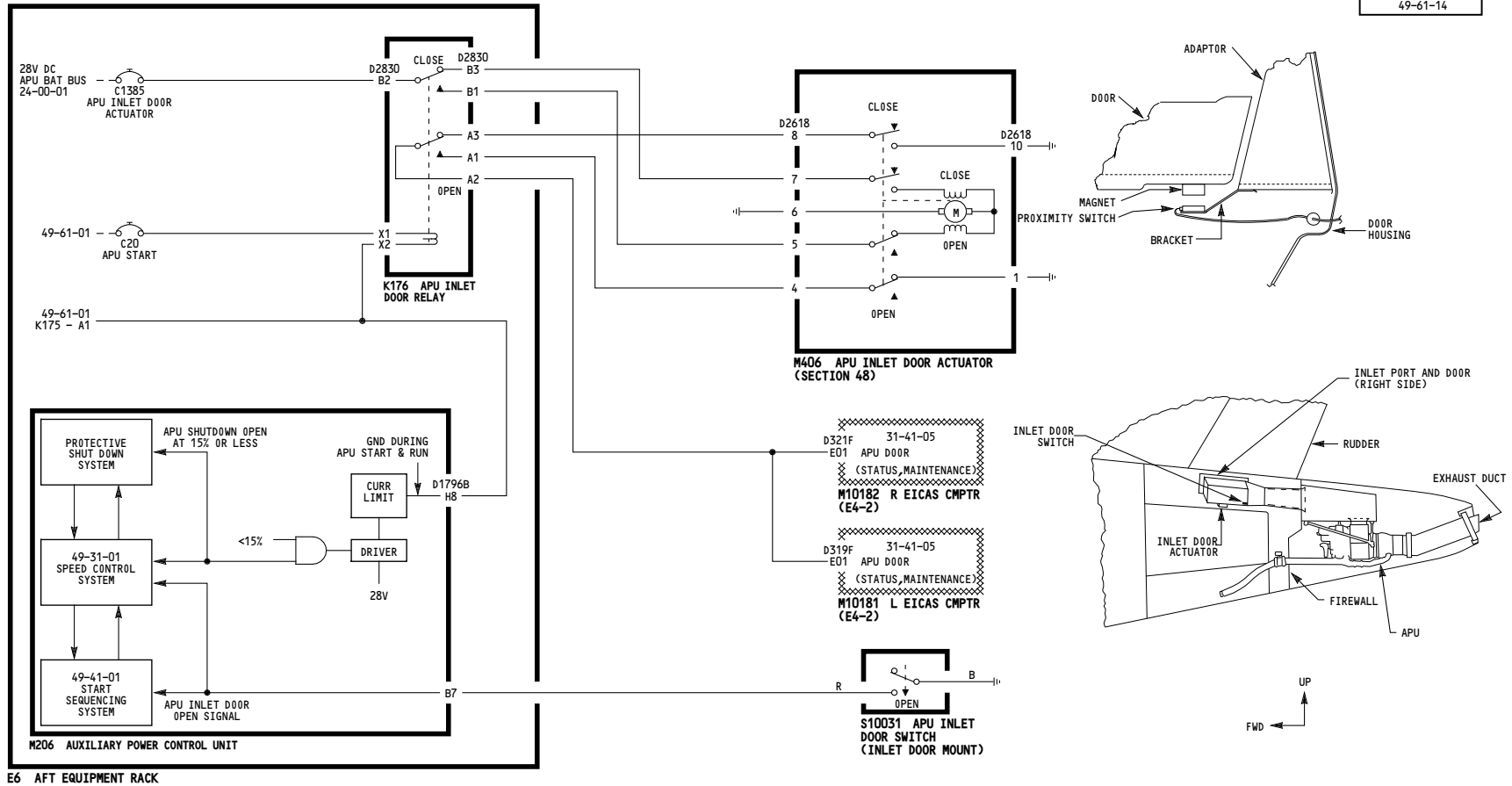
49-52-01

Page 101

May 06/2009

5300

WIRING DIAGRAMS
49-61-11
49-61-14



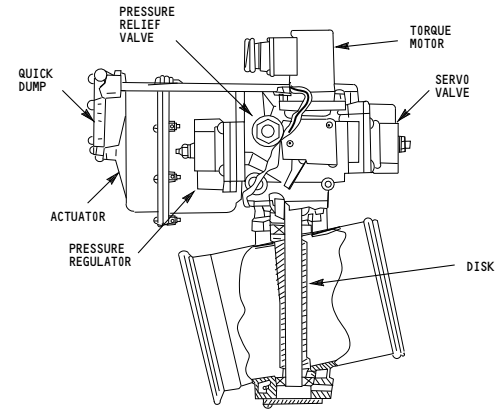
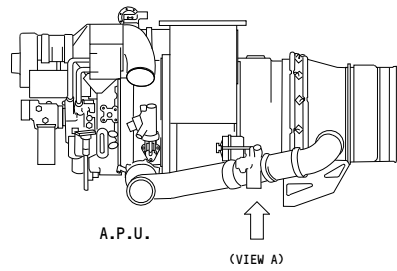
ALL	APU INLET DOOR SYSTEM
	D280N032S

49-52-02

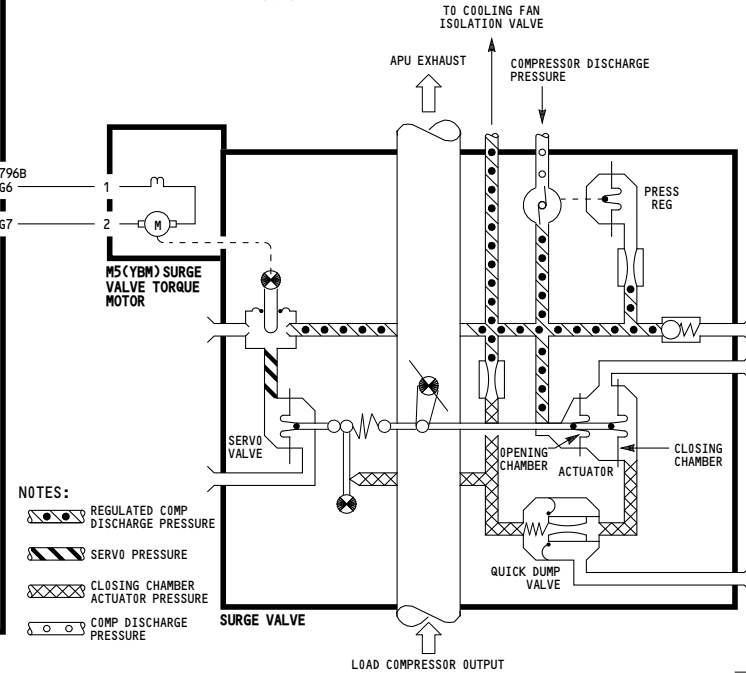
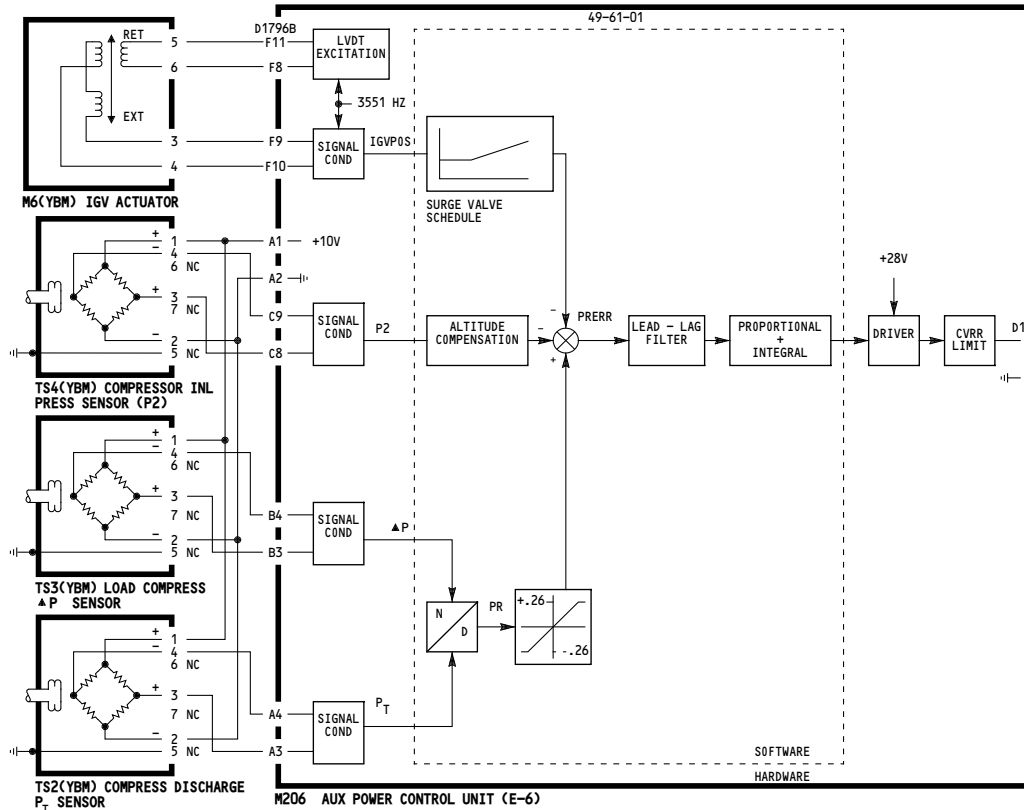
Page 101

May 06/2009

WIRING DIAGRAMS
49-14-11



SURGE VALVE



- NOTES:**
- REGULATED COMP DISCHARGE PRESSURE
 - SERVO PRESSURE
 - CLOSING CHAMBER ACTUATOR PRESSURE
 - COMP DISCHARGE PRESSURE

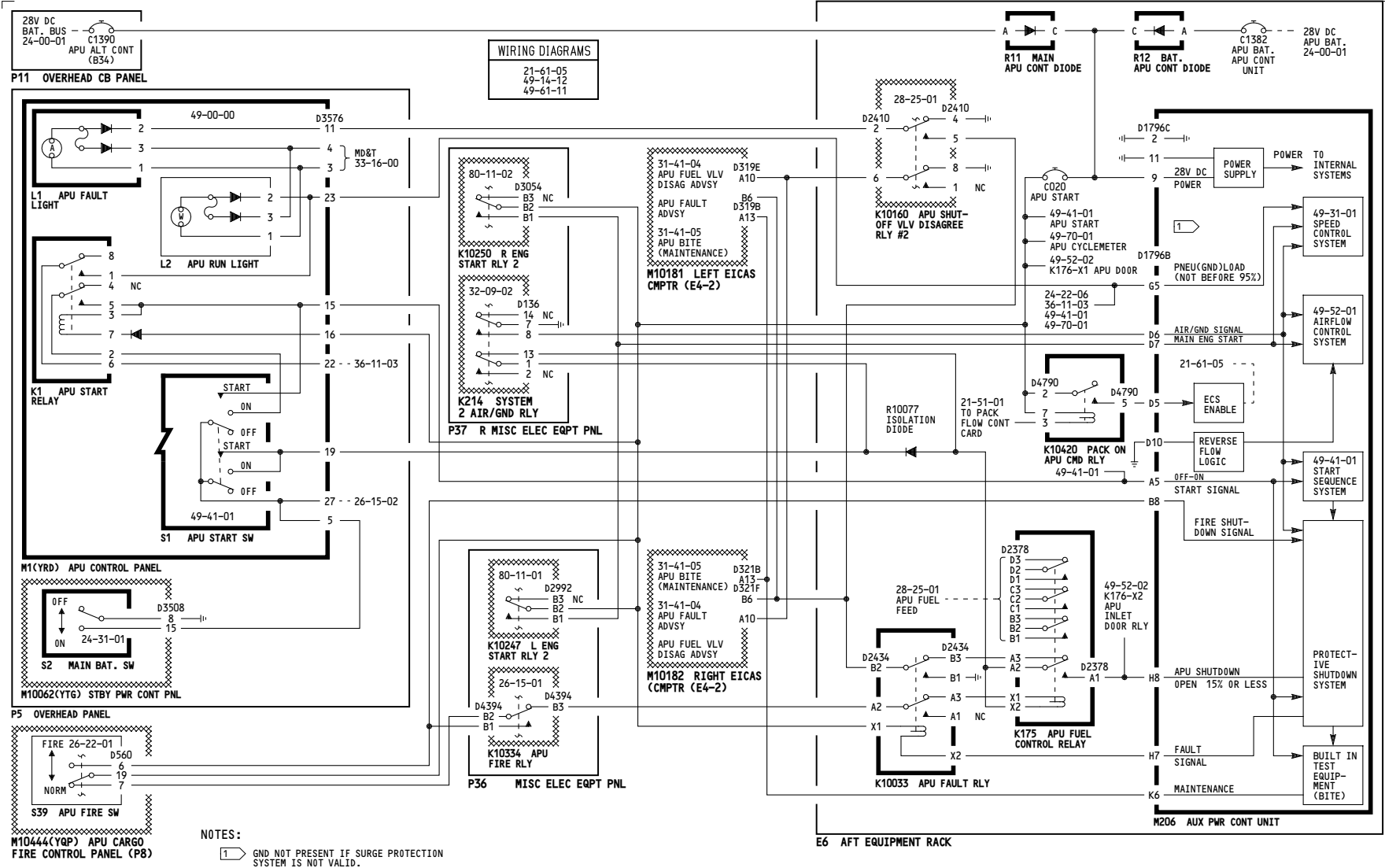
ALL

APU SURGE VALVE SYSTEM

D280N032S

49-53-01

5316



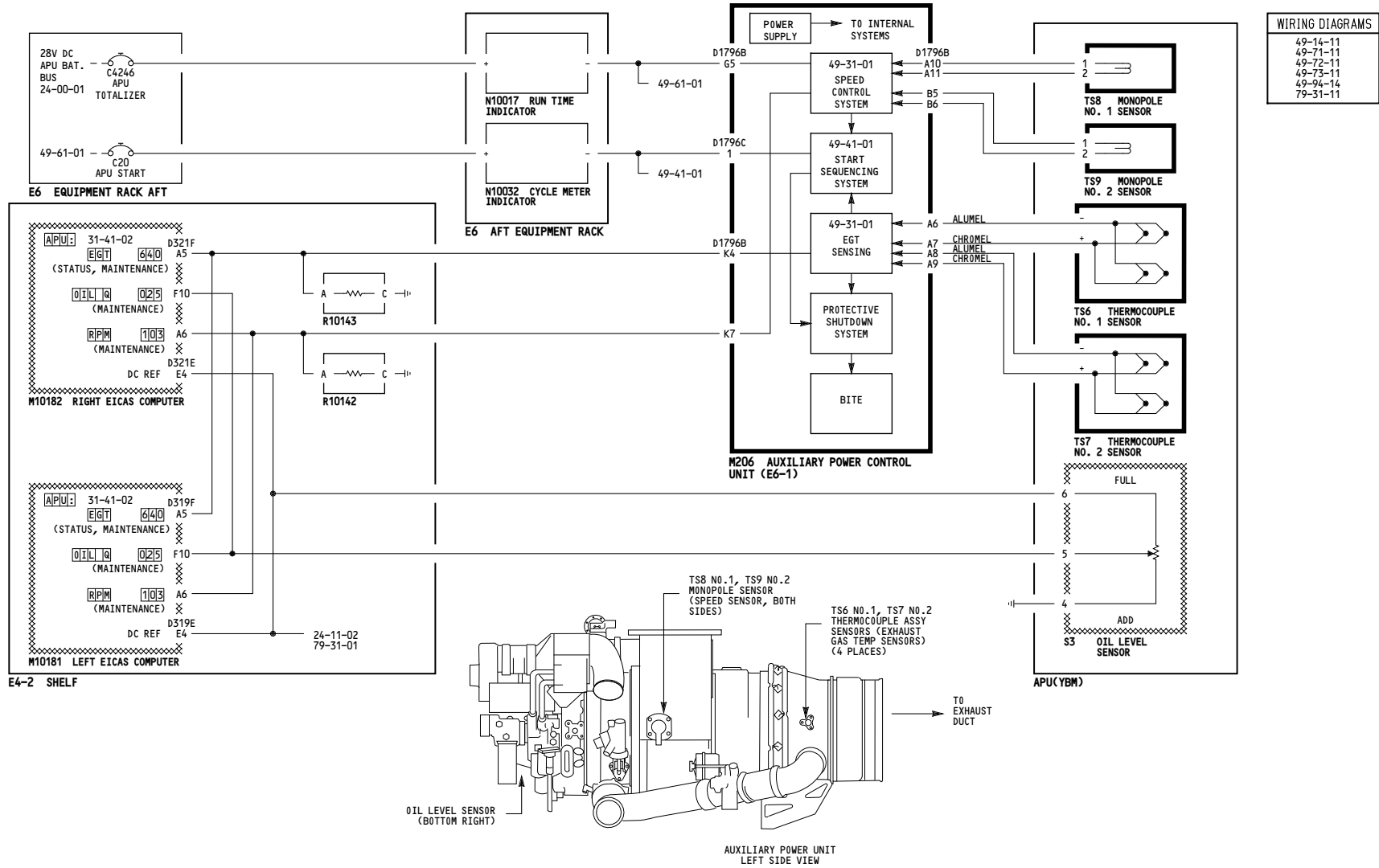
ALL	APU CONTROL SYSTEM
	D280N032S

49-61-01

Page 101

May 06/2009

5314



ALL	APU INDICATION
	D280N032S

49-70-01

Page 101

May 06/2009