

**CHAPTER**

**76**

**ENGINE CONTROLS**



CHAPTER 76  
ENGINE CONTROLS

CH-SC-SU	Schem	Page	Sheet	Date	CH-SC-SU	Schem	Page	Sheet	Date
76-EFFECTIVE PAGES									
		1		May 06/2009					
		2		BLANK					
76-CONTENTS									
R		1		May 06/2009					
		2		BLANK					
76-ALPHABETICAL INDEX									
		1		Dec 18/2007					
		2		BLANK					
76-00-00									
R		101		May 06/2009					
76-11-01									
R		101		May 06/2009					
R		101.1		May 06/2009					
		101.2		Jan 21/2005					
76-11-02									
R		101		May 06/2009					
R		101.1		May 06/2009					
		101.2		Jan 21/2005					

A = Added, R = Revised, D = Deleted, O = Overflow

**76-EFFECTIVE PAGES**



CHAPTER 76  
ENGINE CONTROLS

Title	CH-SC-SU	Schem	Page	Sheet	Date	Effectivity
<b><u>ENGINE CONTROLS</u></b>						
ENGINE CONTROLS	76-00-00		101		May 06/2009	ALL
<b><u>ENGINE CONTROL SYSTEM</u></b>						
LEFT ENGINE FUEL CONDITIONING CONTROL	76-11-01		101		May 06/2009	ALL
			101.1		May 06/2009	001-002
			101.2		Jan 21/2005	003-011
RIGHT ENGINE FUEL CONDITIONING CONTROL	76-11-02		101		May 06/2009	ALL
			101.1		May 06/2009	001-002
			101.2		Jan 21/2005	003-011

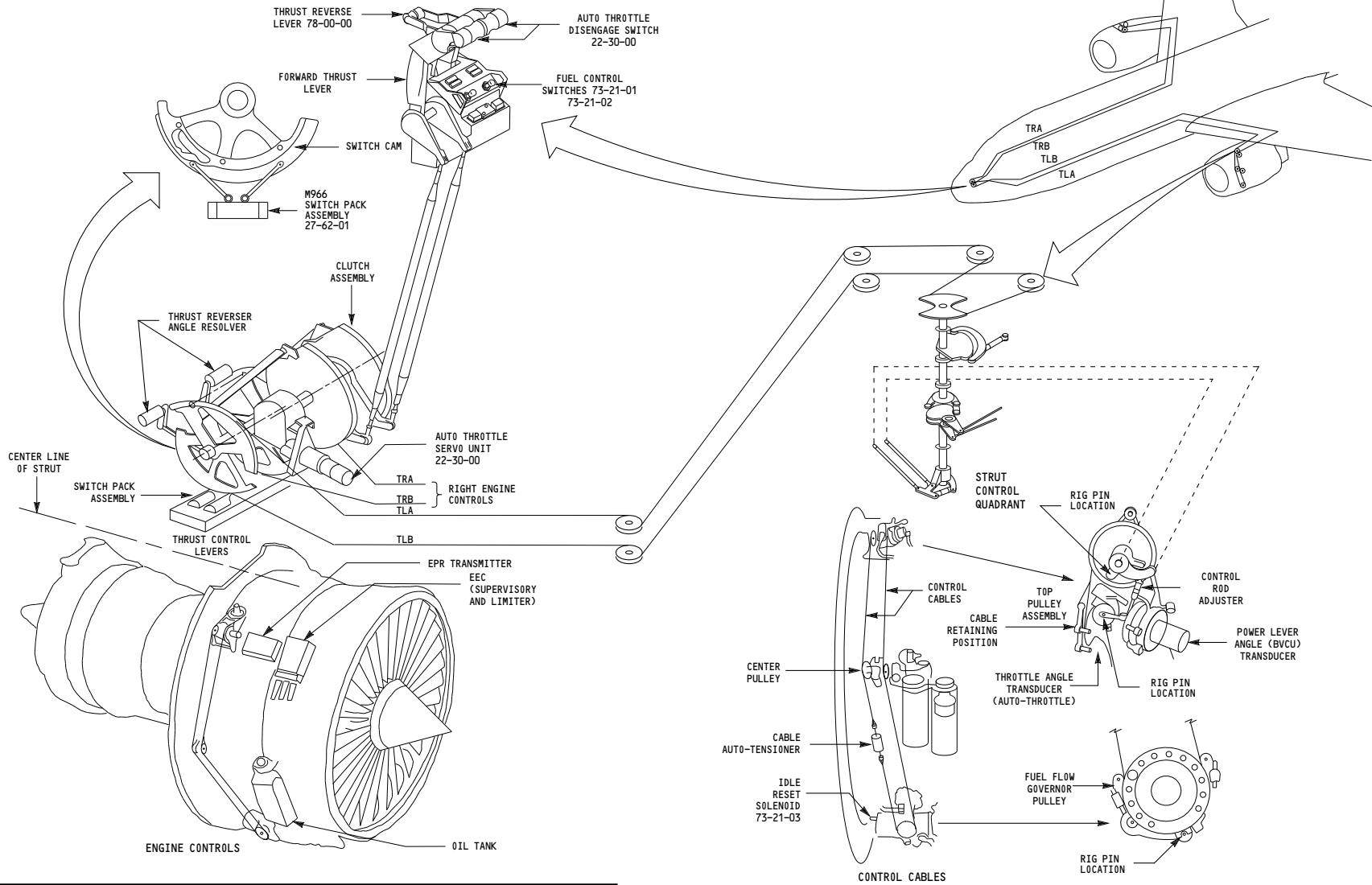
CHAPTER 76  
ENGINE CONTROLS

CH-SC-SU	Title
76-00-00	ENGINE CONTROLS
76-11-01	LEFT ENGINE FUEL CONDITIONING CONTROL
76-11-02	RIGHT ENGINE FUEL CONDITIONING CONTROL

CH-SC-SU	Title
----------	-------

**76-ALPHABETICAL INDEX**

5000

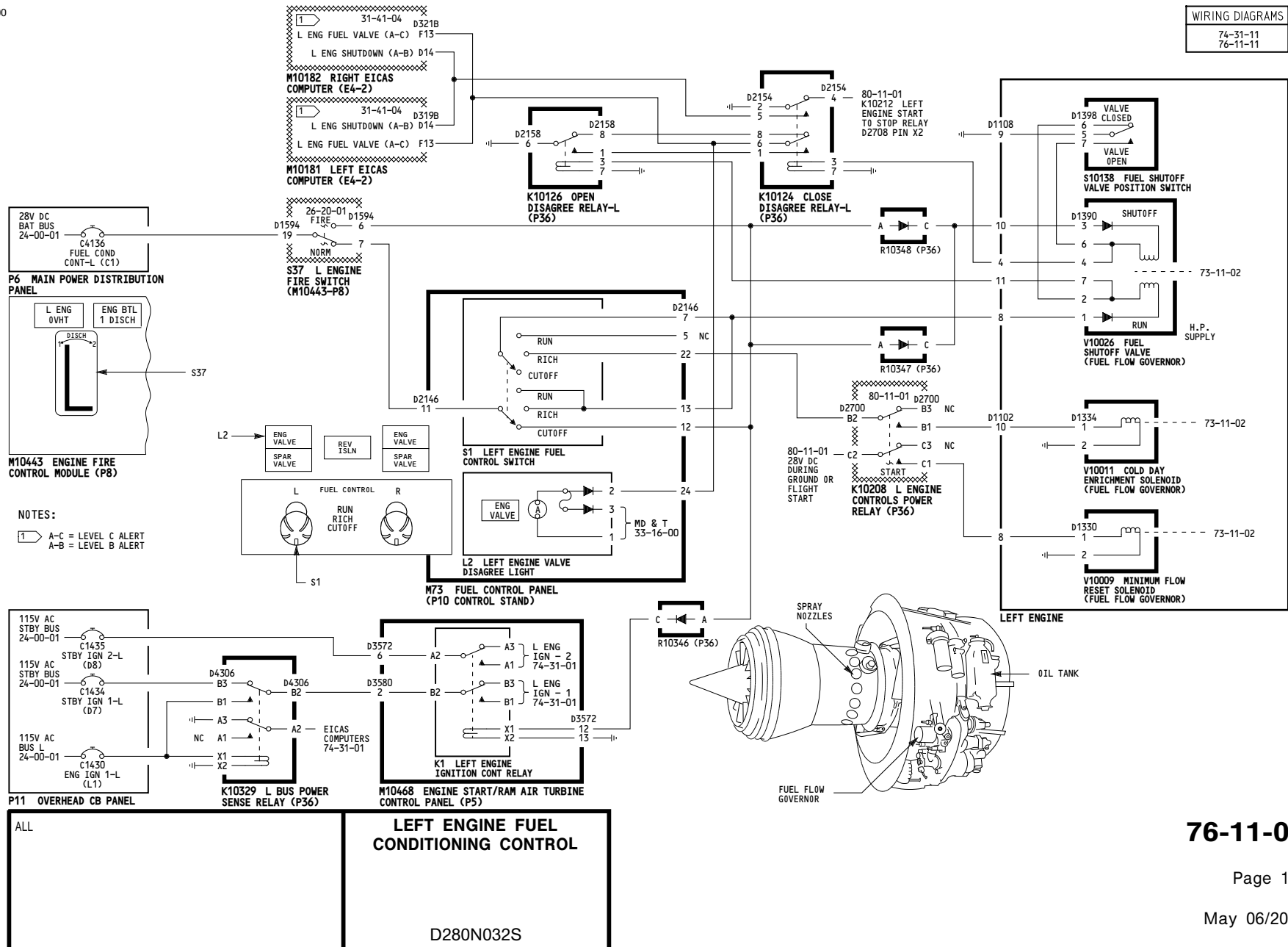


ALL	<p align="center"><b>ENGINE CONTROLS</b></p> <p align="center">D280N032S</p>
-----	--

**76-00-00**

-A  
5000

WIRING DIAGRAMS  
74-31-11  
76-11-11



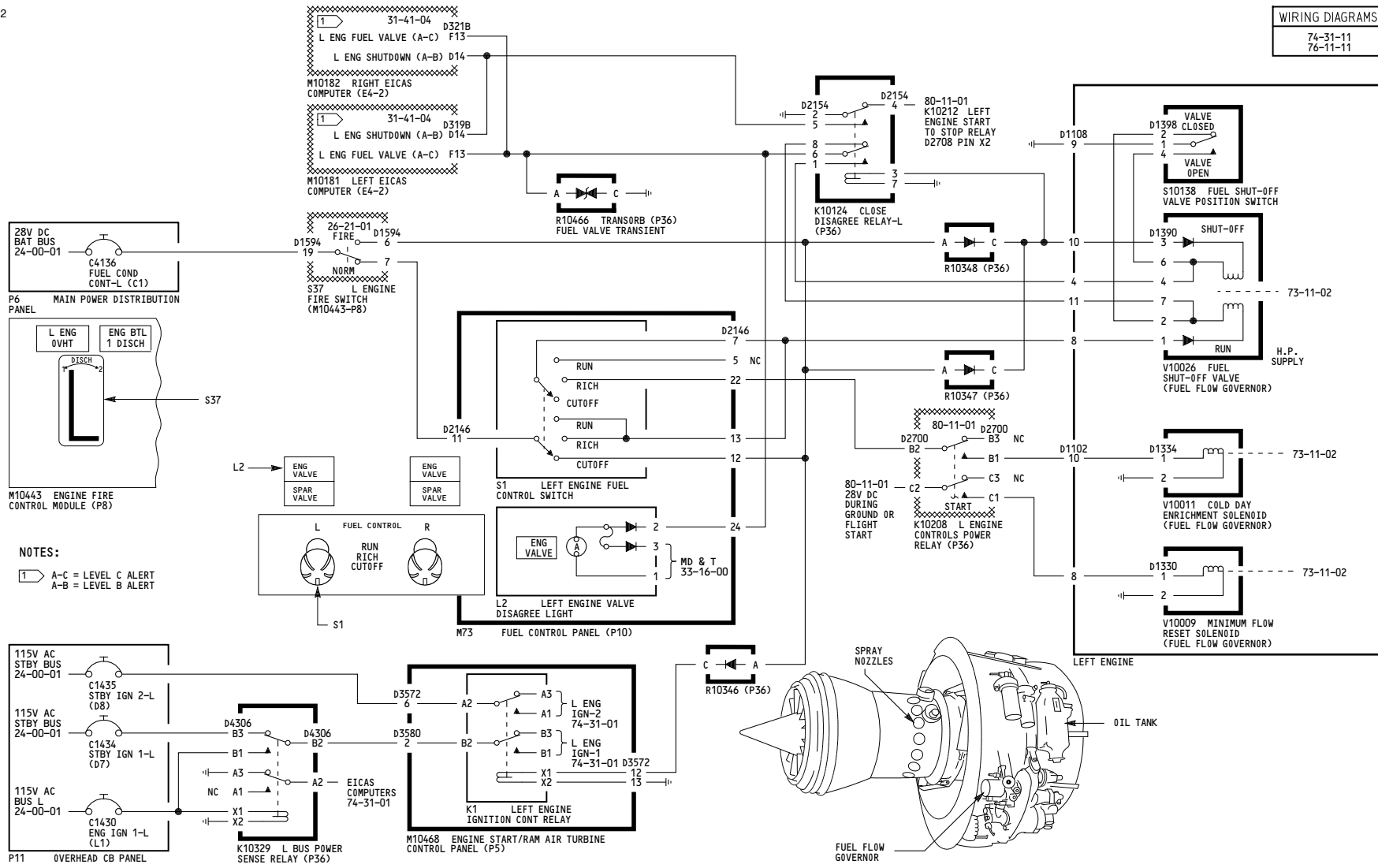
76-11-01

Page 101

May 06/2009

5042

WIRING DIAGRAMS  
74-31-11  
76-11-11



**NOTES:**  
1 A-C = LEVEL C ALERT  
A-B = LEVEL B ALERT

001-002

**LEFT ENGINE FUEL  
CONDITIONING CONTROL**

- Incorporates
- ▶ 76-0011 R01
  - ▶ 76-0014
  - ▶ 78-0032 R03

D280N032S

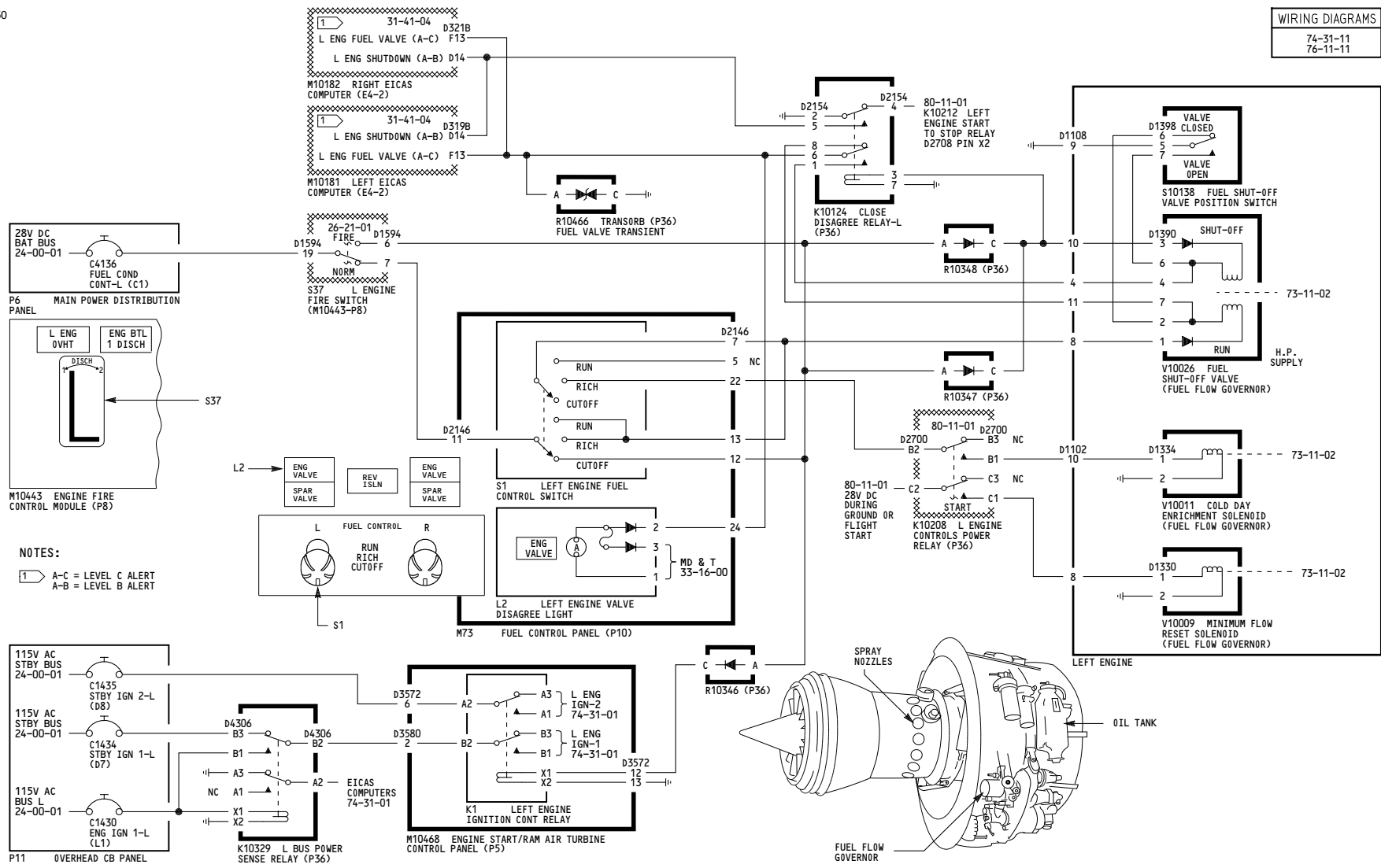
**76-11-01**

Page 101.1

May 06/2009

5050

WIRING DIAGRAMS  
74-31-11  
76-11-11



**NOTES:**  
 1 A-C = LEVEL C ALERT  
 A-B = LEVEL B ALERT

003-011

**LEFT ENGINE FUEL CONDITIONING CONTROL**

D280N032S

Incorporates  
 76-0011 R01  
 76-0014

**76-11-01**

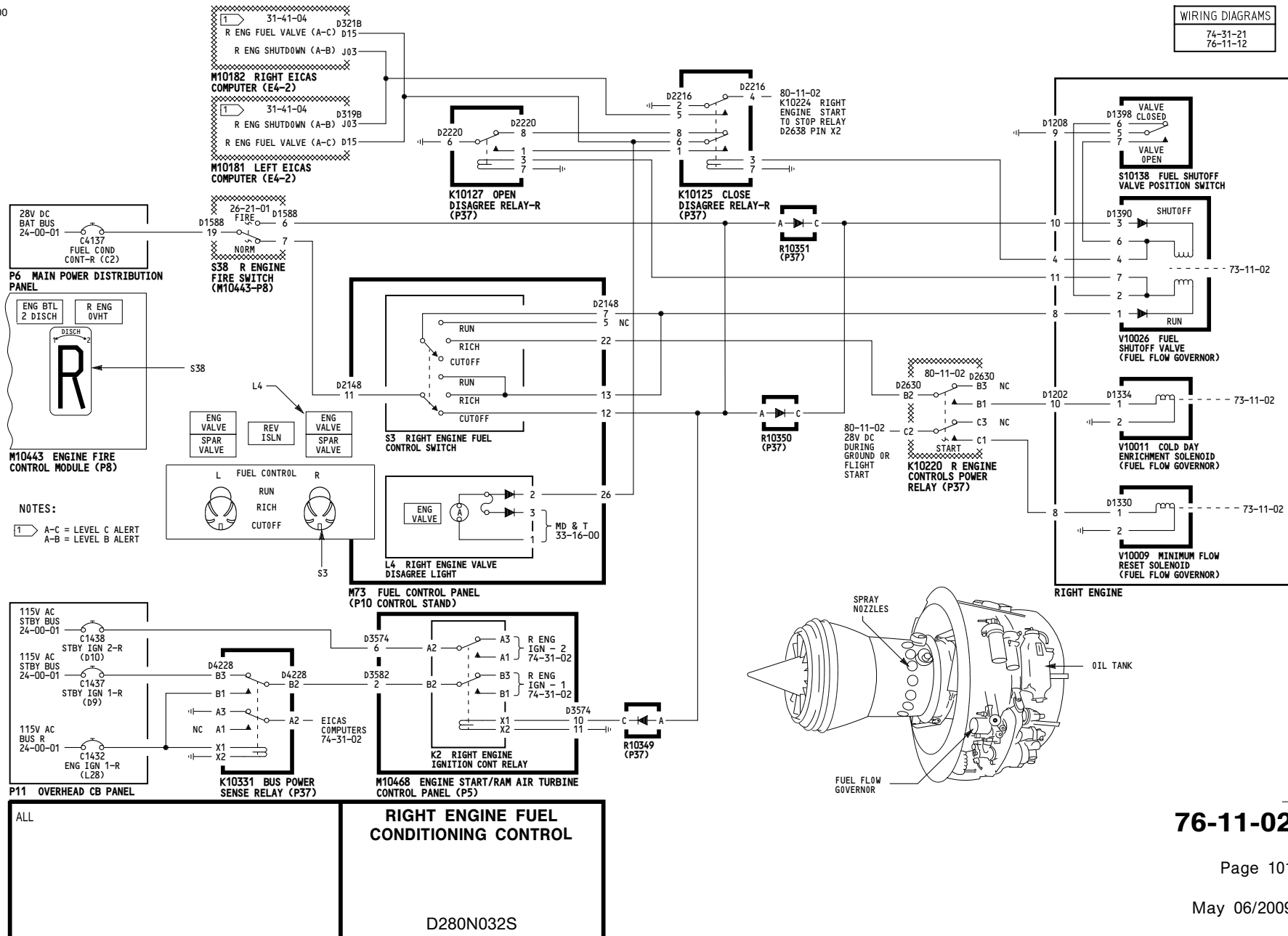
Page 101.2

Jan 21/2005



-A  
5000

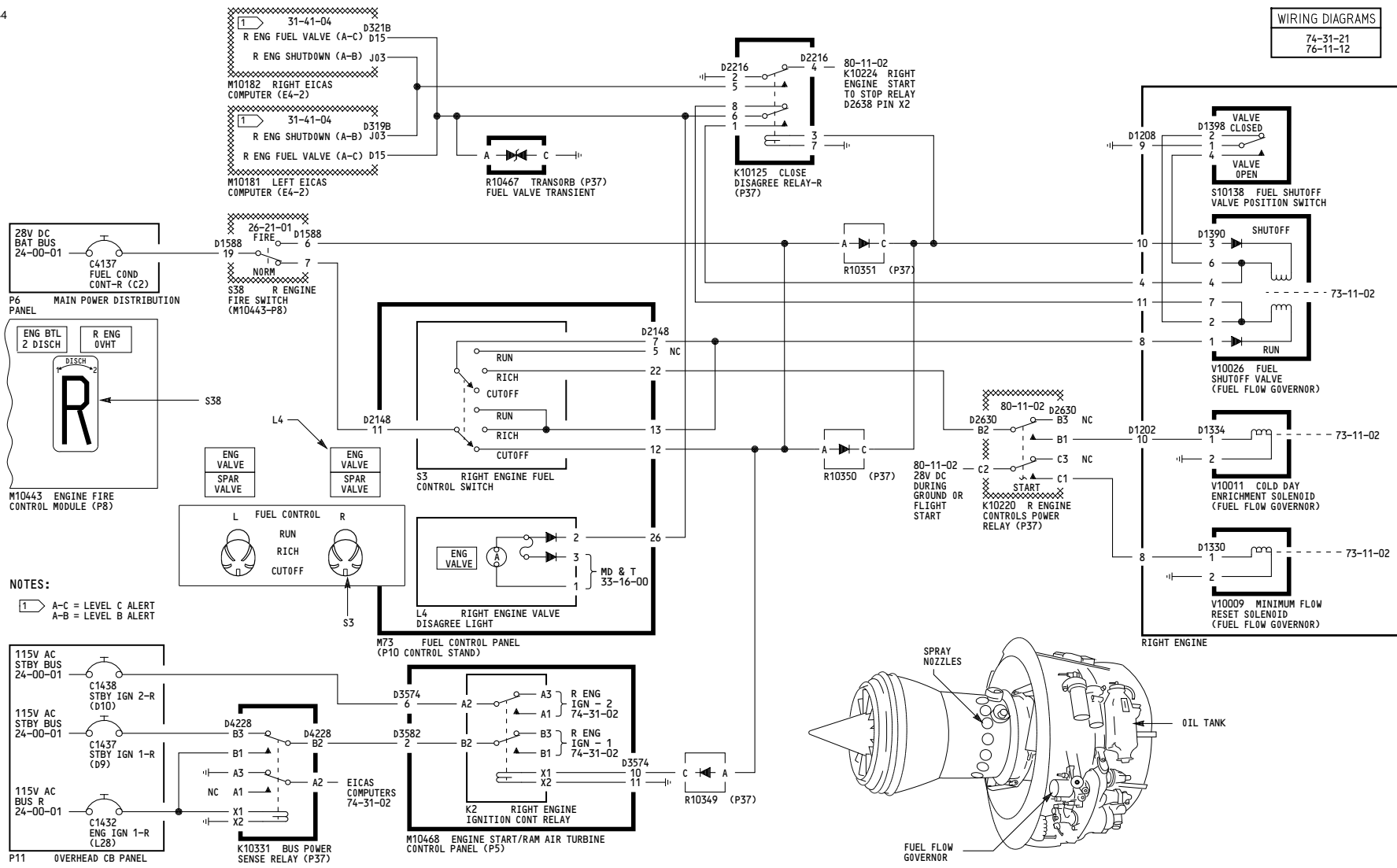
WIRING DIAGRAMS  
74-31-21  
76-11-12



**76-11-02**

5044

WIRING DIAGRAMS  
74-31-21  
76-11-12



NOTES:  
1 A-C = LEVEL C ALERT  
A-B = LEVEL B ALERT

001-002

**RIGHT ENGINE FUEL CONDITIONING CONTROL**

D280N032S

- Incorporates
- 76-0011 R01
  - 76-0014
  - 78-0032 R03

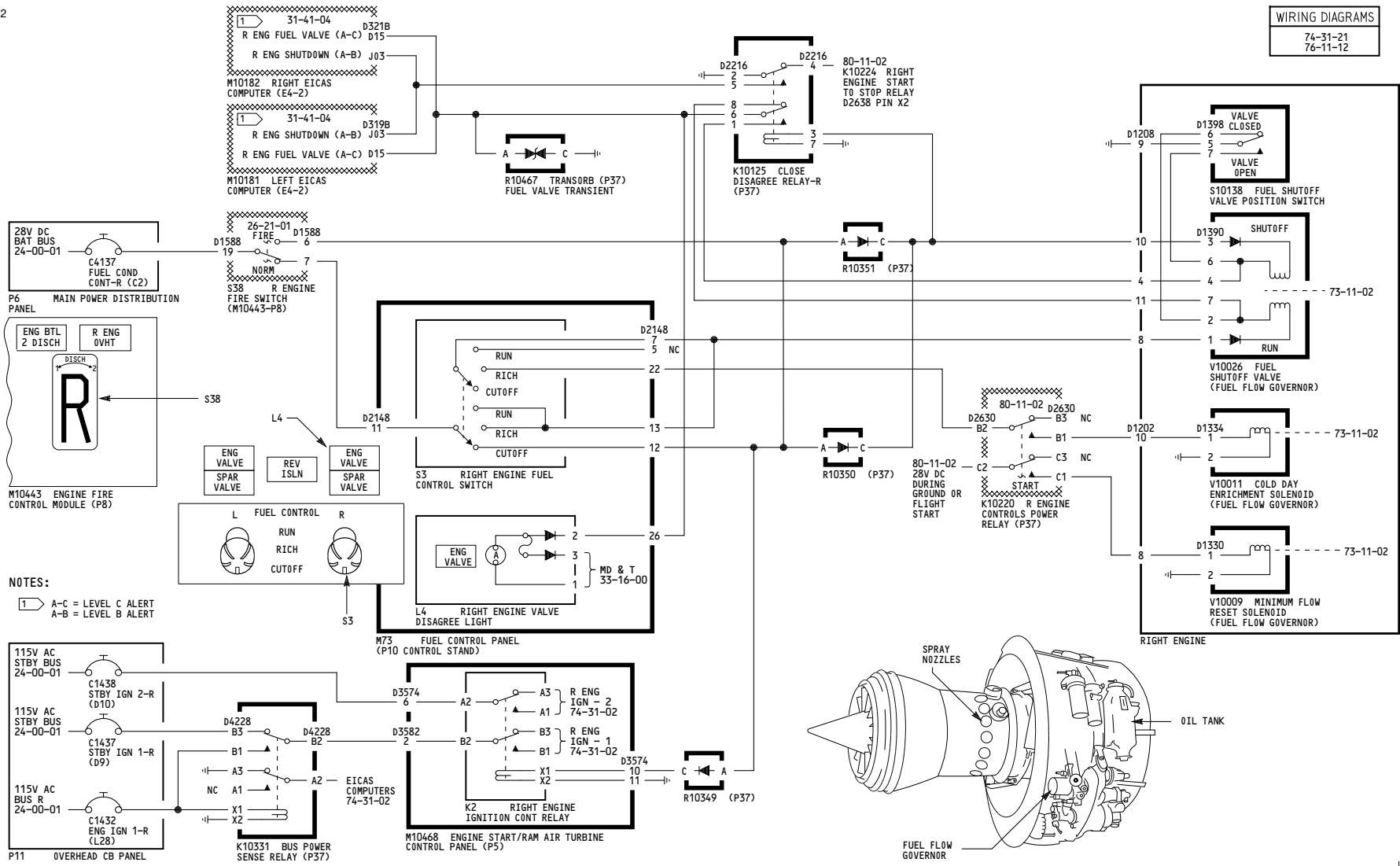
**76-11-02**

Page 101.1

May 06/2009

5052

WIRING DIAGRAMS  
74-31-21  
76-11-12



NOTES:  
1 A-C = LEVEL C ALERT  
A-B = LEVEL B ALERT

003-011

**RIGHT ENGINE FUEL CONDITIONING CONTROL**

**D280N032S**

Incorporates  
76-0011 R01  
76-0014

**76-11-02**

Page 101.2

Jan 21/2005