

**CHAPTER**

**78**

**EXHAUST**



CHAPTER 78  
EXHAUST

CH-SC-SU	Schem	Page	Sheet	Date	CH-SC-SU	Schem	Page	Sheet	Date
78-EFFECTIVE PAGES					78-36-01				
		1		May 06/2009	R		101		May 06/2009
		2		BLANK	R		101.1		May 06/2009
78-CONTENTS							102		Dec 18/2007
R		1		May 06/2009			102.1		Jan 21/2005
		2		BLANK			102.2		Jan 21/2005
78-ALPHABETICAL INDEX									
		1		Dec 18/2007					
		2		BLANK					
78-34-01									
R		101		May 06/2009					
R		101.1		May 06/2009					
		102		Jan 21/2005					
		102.1		Jan 21/2005					
78-34-02									
R		101		May 06/2009					
R		101.1		May 06/2009					
		102		Jan 21/2005					
		102.1		Jan 21/2005					
78-34-51									
R		101.1		May 06/2009					
		102		Jan 21/2005					
78-34-61									
R		101.1		May 06/2009					
		102		Jan 21/2005					

A = Added, R = Revised, D = Deleted, O = Overflow

**78-EFFECTIVE PAGES**



CHAPTER 78  
EXHAUST

Title	CH-SC-SU	Schem	Page	Sheet	Date	Effectivity
<b><u>THRUST REVERSER CONTROL SYSTEM</u></b>						
LEFT ENGINE THRUST REVERSER CONTROL	78-34-01		101		May 06/2009	001-002
			101.1		May 06/2009	001-002
			102		Jan 21/2005	003-099
			102.1		Jan 21/2005	003-011
RIGHT ENGINE THRUST REVERSER CONTROL	78-34-02		101		May 06/2009	001-002
			101.1		May 06/2009	001-002
			102		Jan 21/2005	003-099
			102.1		Jan 21/2005	003-011
LEFT ENGINE THRUST REVERSER SYNC-LOCK	78-34-51		101.1		May 06/2009	001-002
			102		Jan 21/2005	003-099
RIGHT ENGINE THRUST REVERSER SYNC-LOCK	78-34-61		101.1		May 06/2009	001-002
			102		Jan 21/2005	003-099
<b><u>THRUST REVERSER POSITION INDICATING SYSTEM</u></b>						
THRUST REVERSER INDICATION	78-36-01		101		May 06/2009	001-002
			101.1		May 06/2009	001-002
			102		Dec 18/2007	003-099
			102.1		Jan 21/2005	003-009
			102.2		Jan 21/2005	010-011

CHAPTER 78  
EXHAUST

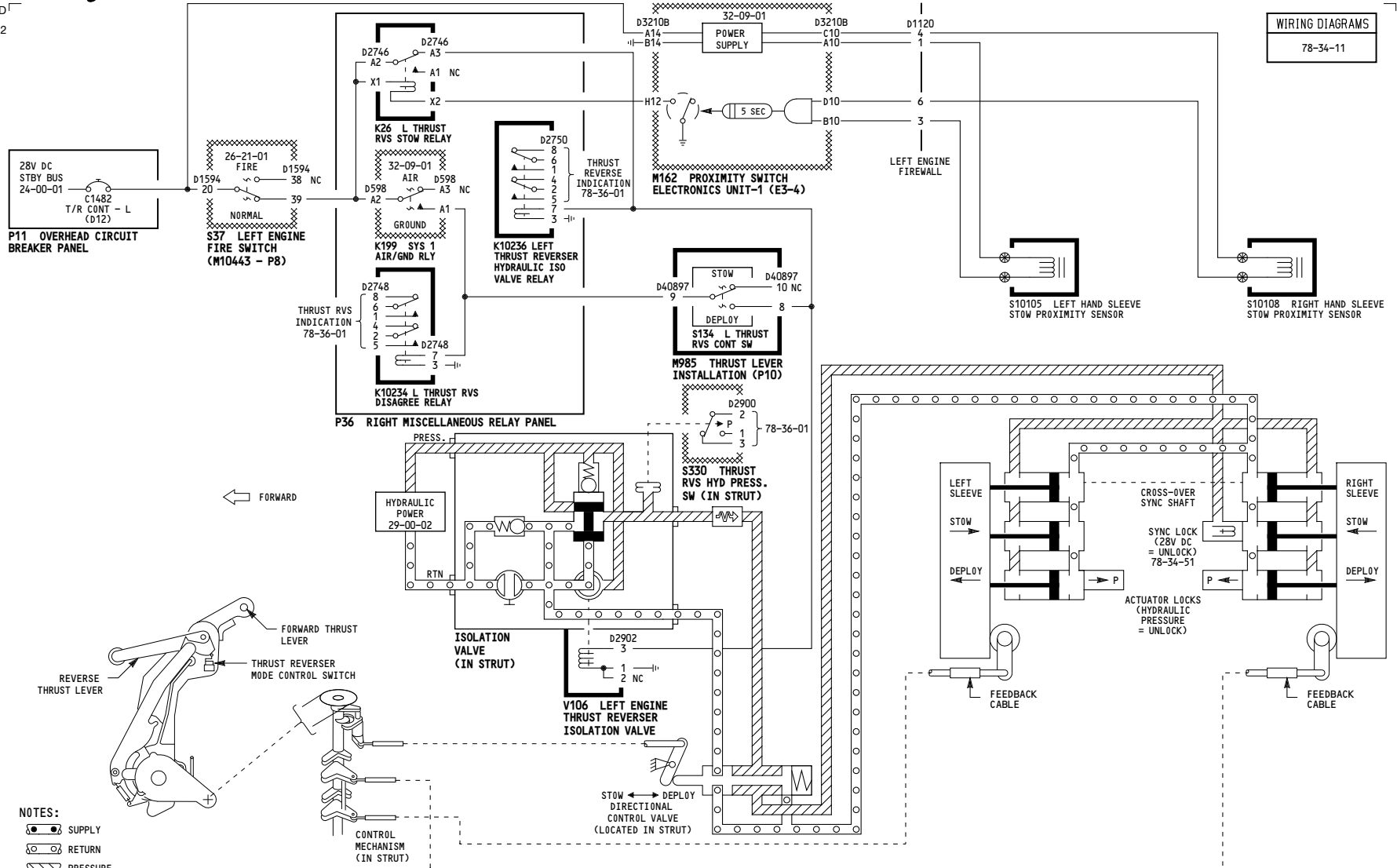
CH-SC-SU	Title
78-34-01	LEFT ENGINE THRUST REVERSER CONTROL
78-34-51	LEFT ENGINE THRUST REVERSER SYNC-LOCK
78-34-02	RIGHT ENGINE THRUST REVERSER CONTROL
78-34-61	RIGHT ENGINE THRUST REVERSER SYNC-LOCK
78-36-01	THRUST REVERSER INDICATION

CH-SC-SU	Title
----------	-------

**78-ALPHABETICAL INDEX**

5012

WIRING DIAGRAMS  
78-34-11



001-002	<p><b>LEFT ENGINE THRUST REVERSER CONTROL</b></p> <p>D280N032S</p>
---------	--

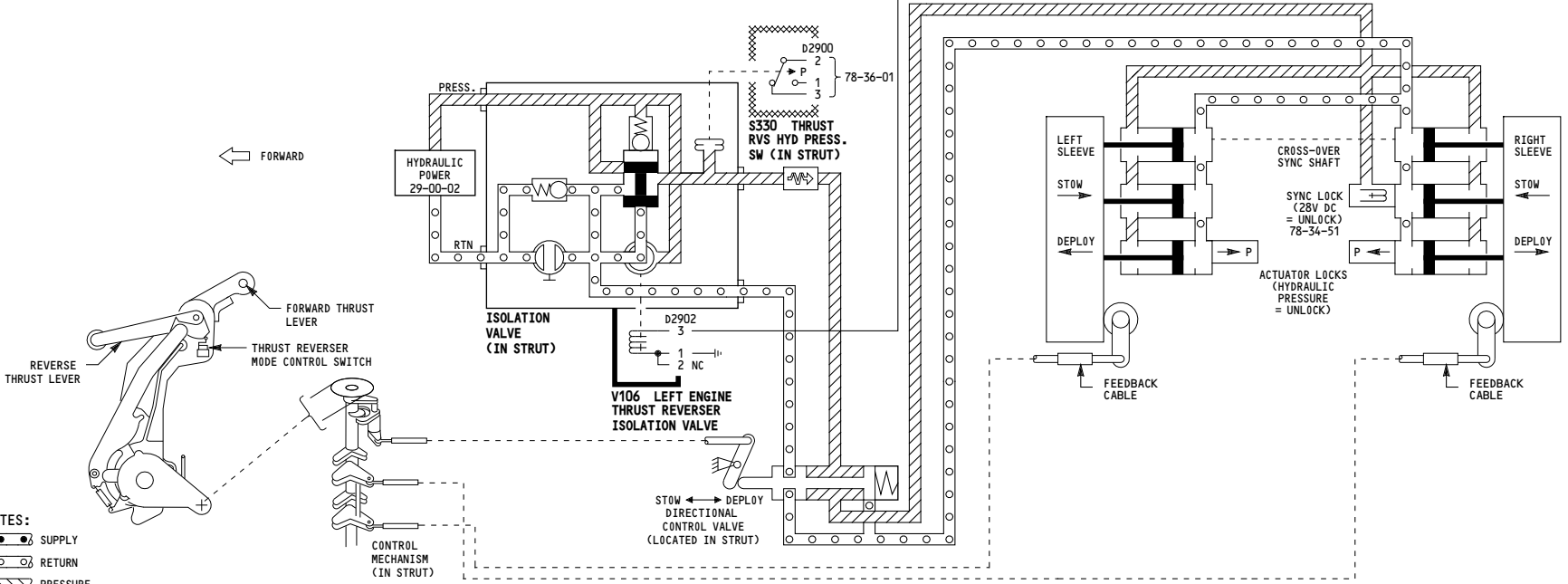
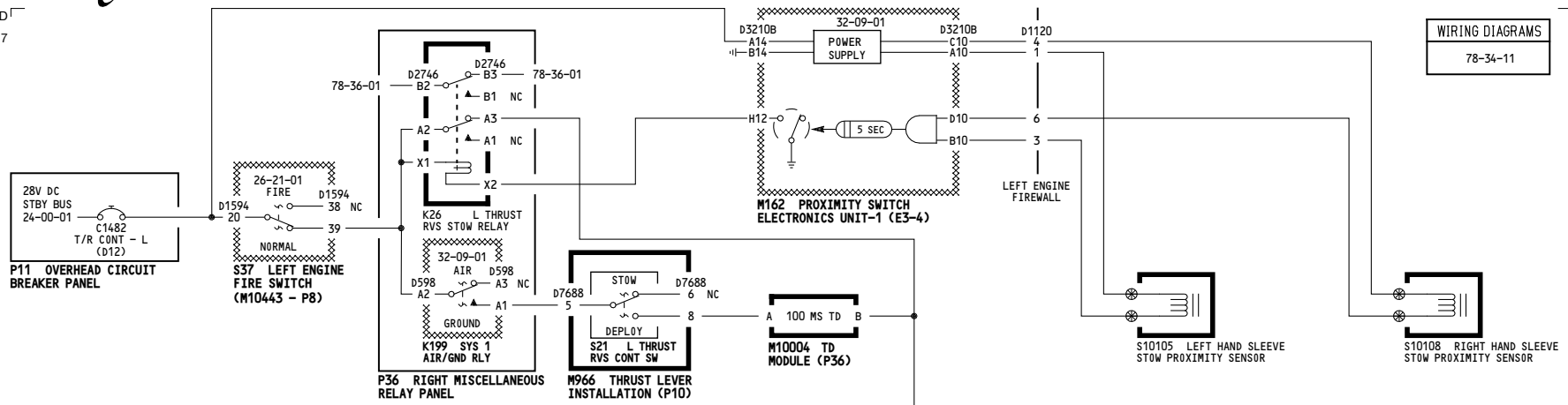
**78-34-01**

Page 101

May 06/2009

-D  
5017

WIRING DIAGRAMS  
78-34-11



- NOTES:**
- SUPPLY
  - RETURN
  - PRESSURE

001-002	<b>LEFT ENGINE THRUST REVERSER CONTROL</b>	Incorporates 78-0032 R03 78-0039 R01
D280N032S		

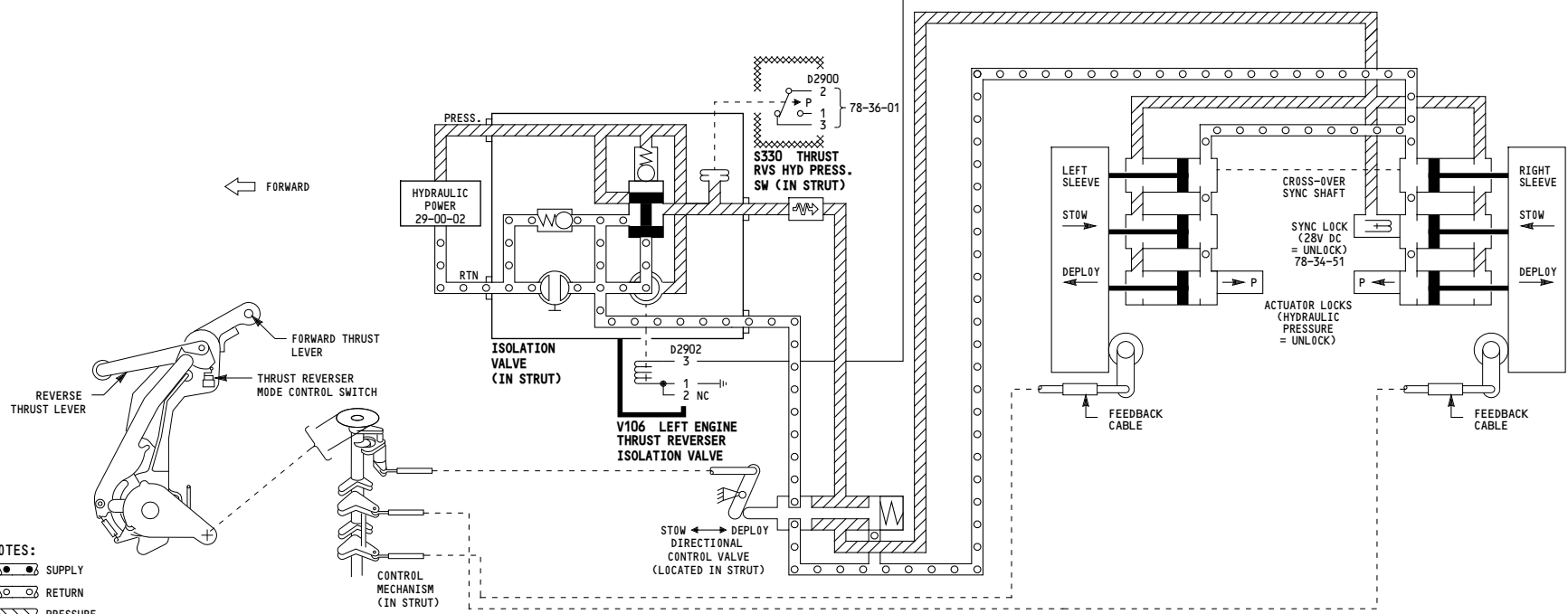
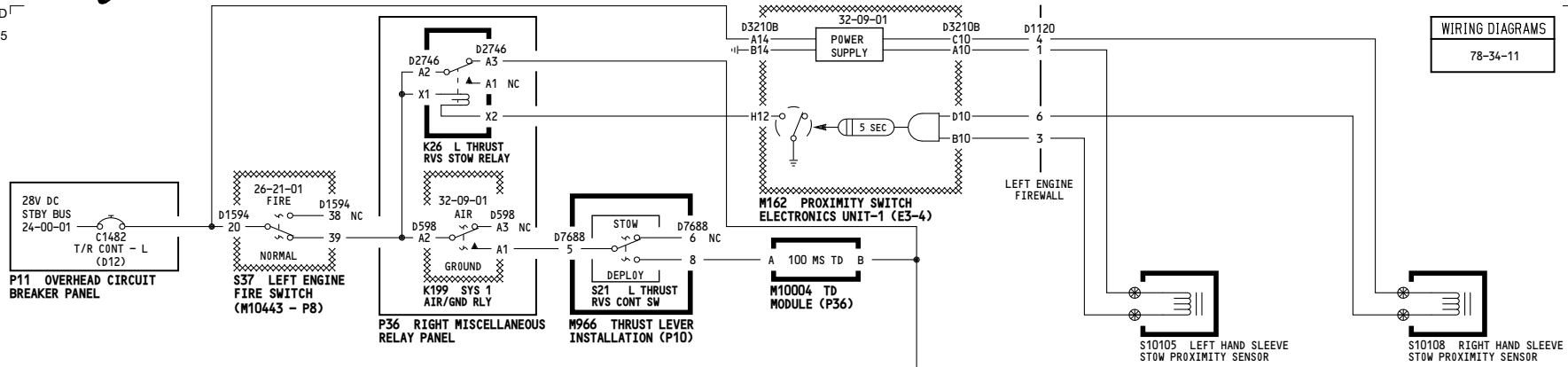
**78-34-01**

Page 101.1

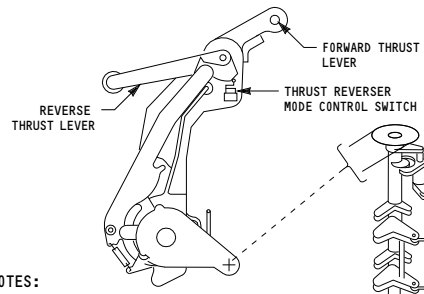
May 06/2009

5015

WIRING DIAGRAMS  
78-34-11



← FORWARD



- NOTES:**
- SUPPLY
  - RETURN
  - PRESSURE

003-099	<p><b>LEFT ENGINE THRUST REVERSER CONTROL</b></p> <p>D280N032S</p>
---------	--

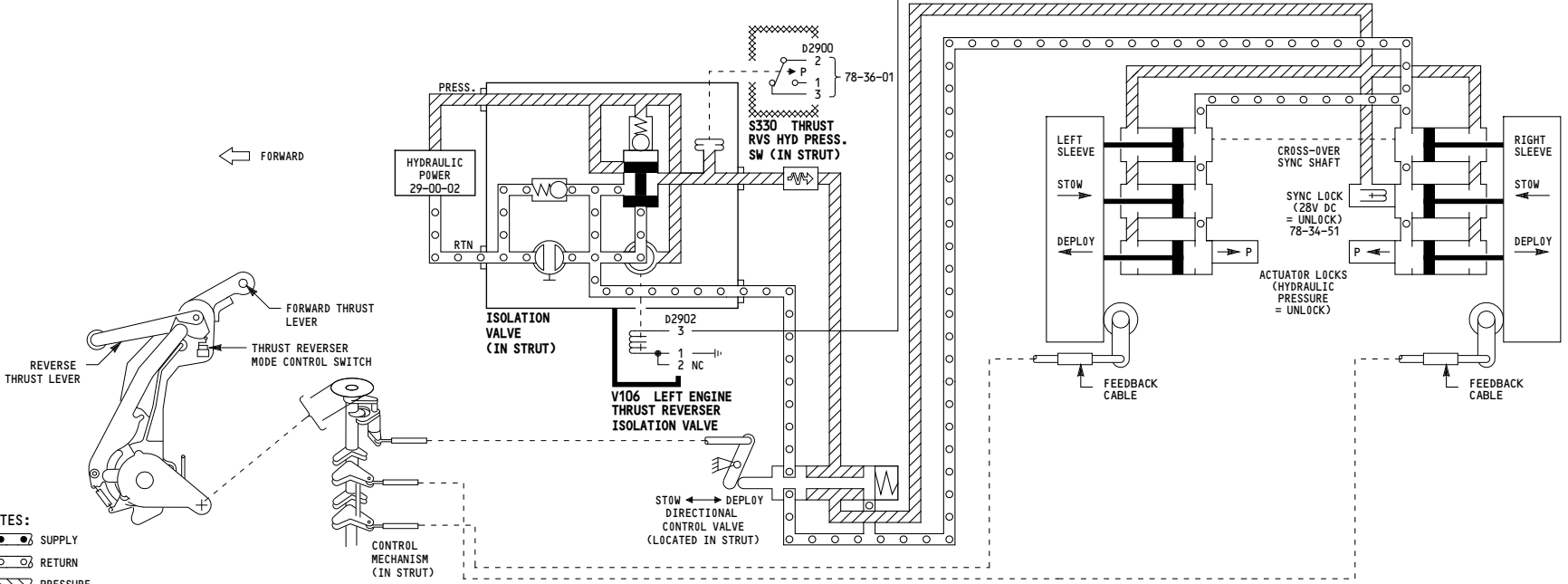
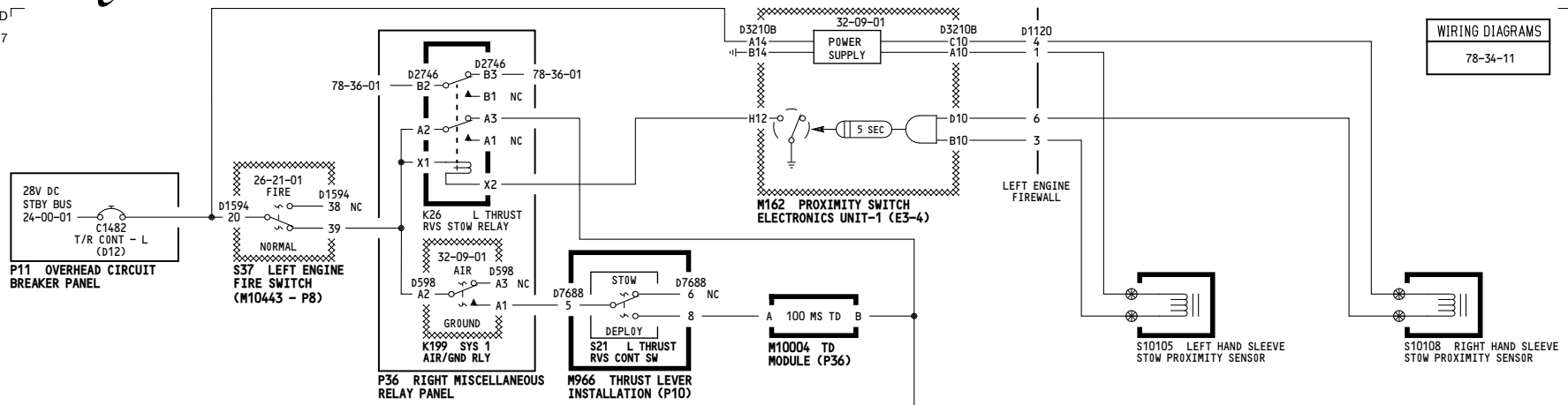
**78-34-01**

Page 102

Jan 21/2005

-D  
5017

WIRING DIAGRAMS  
78-34-11



- NOTES:**
- SUPPLY
  - RETURN
  - PRESSURE

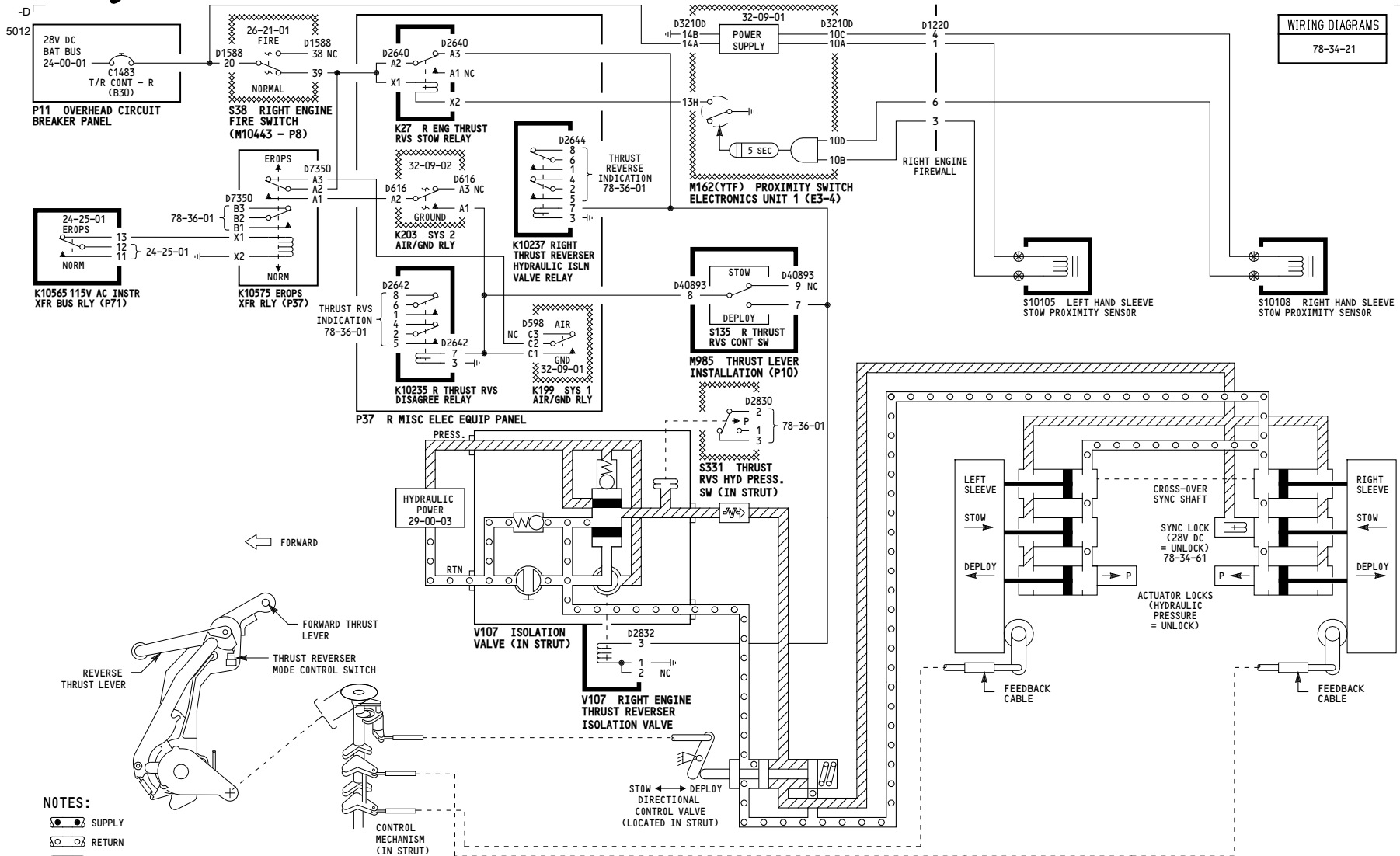
003-011	<b>LEFT ENGINE THRUST REVERSER CONTROL</b>	Incorporates 78-0039 R01
D280N032S		

**78-34-01**

Page 102.1

Jan 21/2005



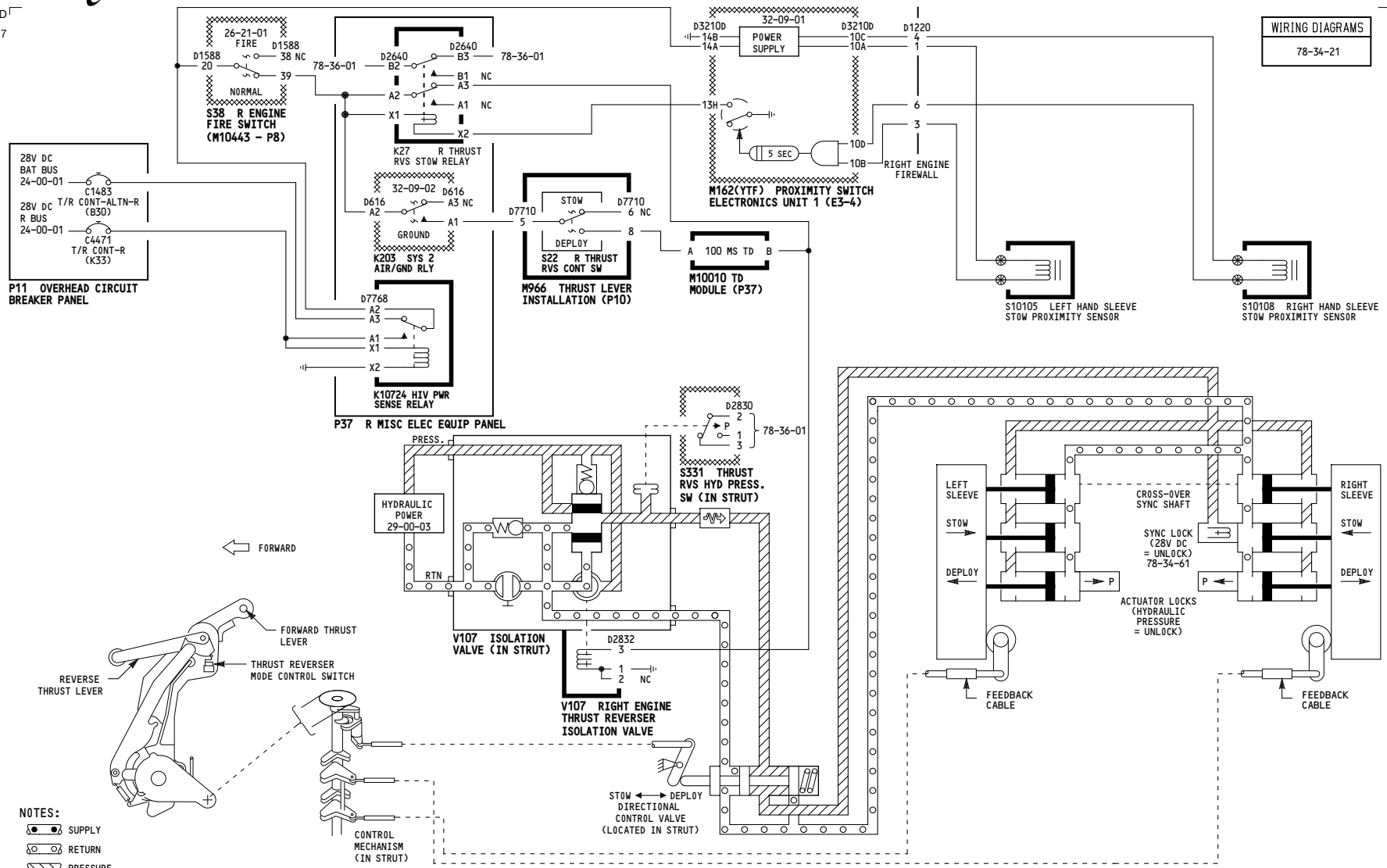


001-002	<p><b>RIGHT ENGINE THRUST REVERSER CONTROL</b></p> <p>D280N032S</p>
---------	---

**78-34-02**

5017

WIRING DIAGRAMS  
78-34-21



- NOTES:**
- SUPPLY
  - RETURN
  - ▨ PRESSURE

001-002	<b>RIGHT ENGINE THRUST REVERSER CONTROL</b>	Incorporates ▨ 78-0032 R03 ▨ 78-0039 R01
D280N032S		

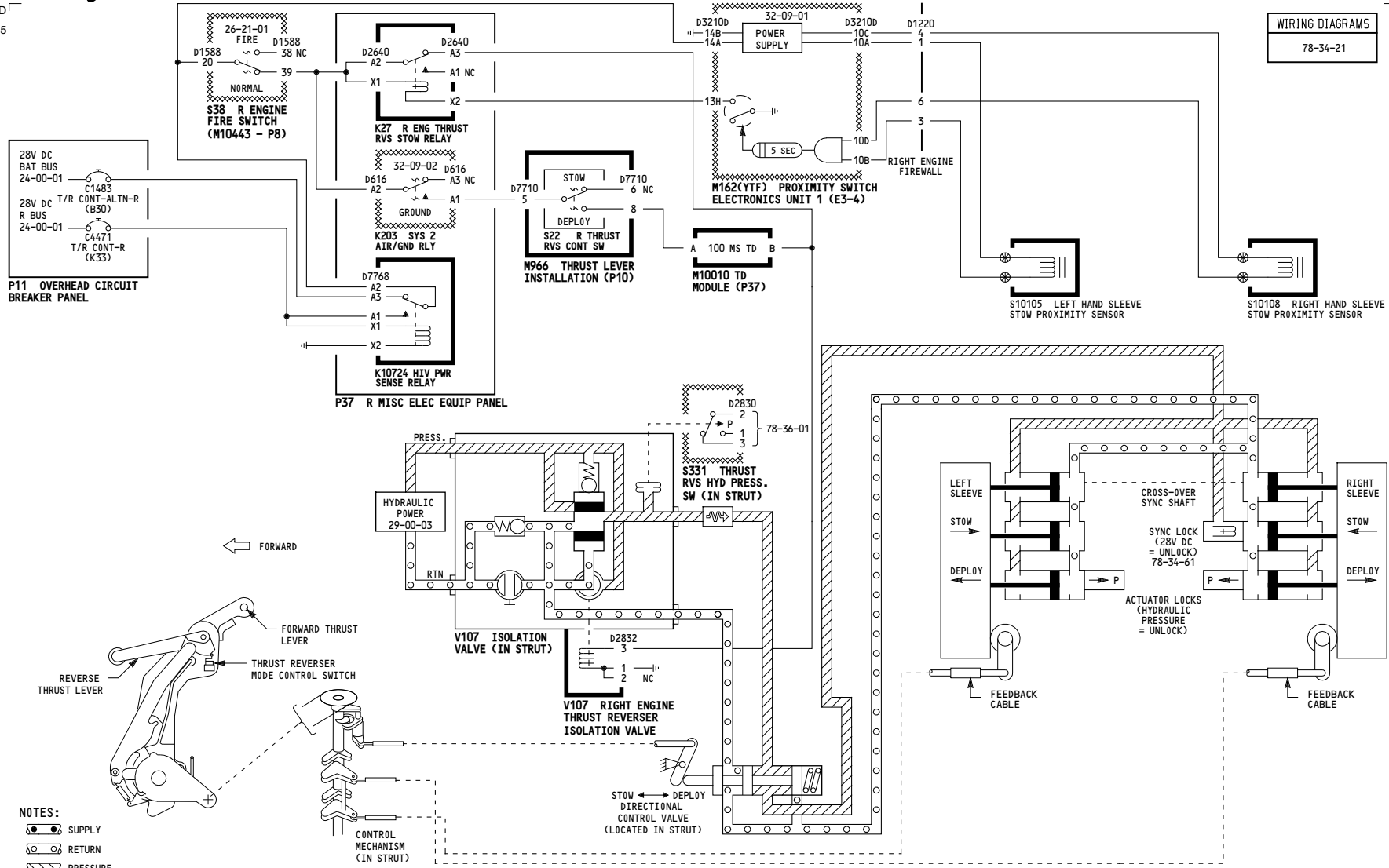
**78-34-02**

Page 101.1

May 06/2009

5015

WIRING DIAGRAMS  
78-34-21



- NOTES:**
- SUPPLY
  - RETURN
  - PRESSURE

003-099	<b>RIGHT ENGINE THRUST REVERSER CONTROL</b>
D280N032S	

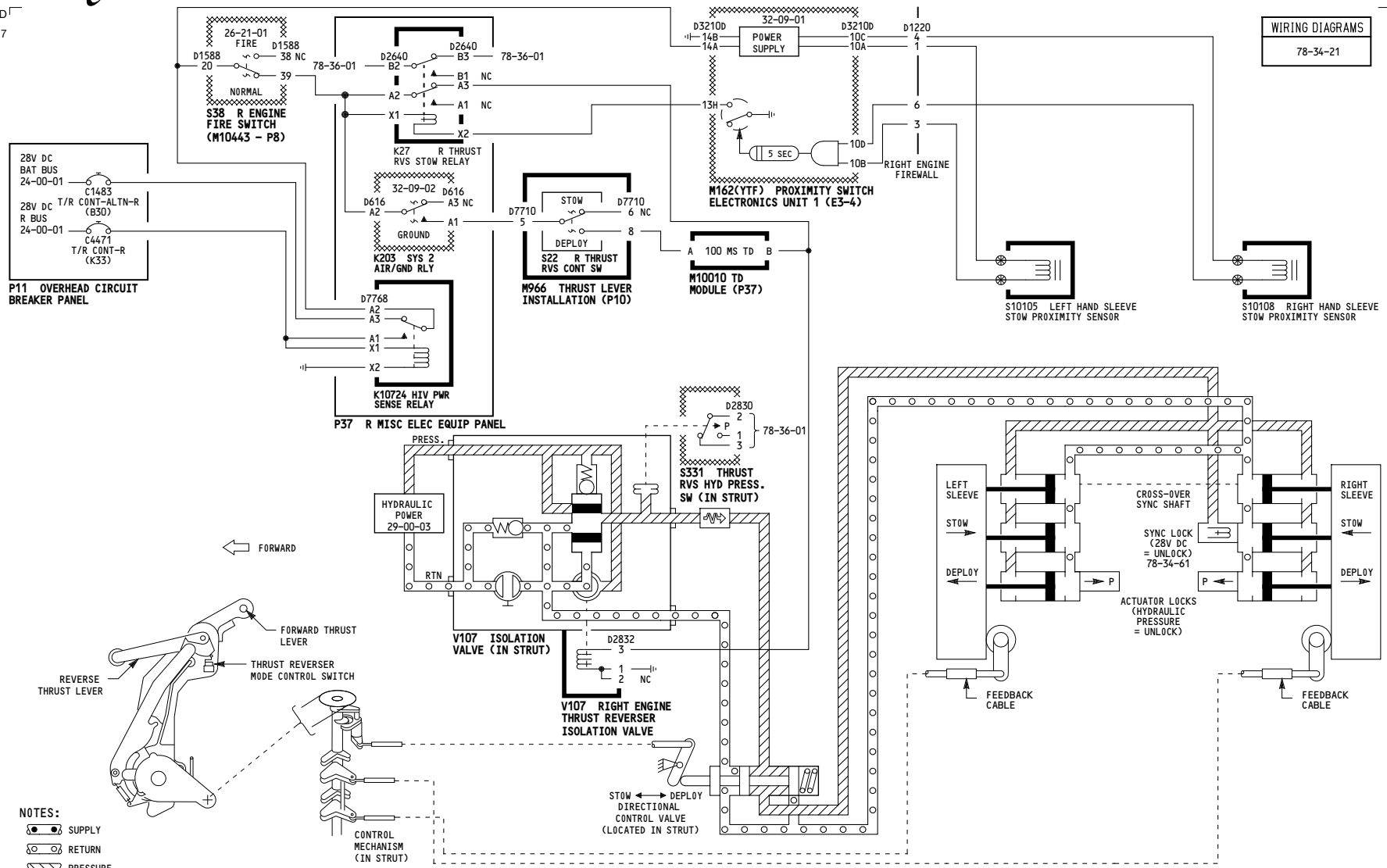
**78-34-02**

Page 102

Jan 21/2005

5017

WIRING DIAGRAMS  
78-34-21



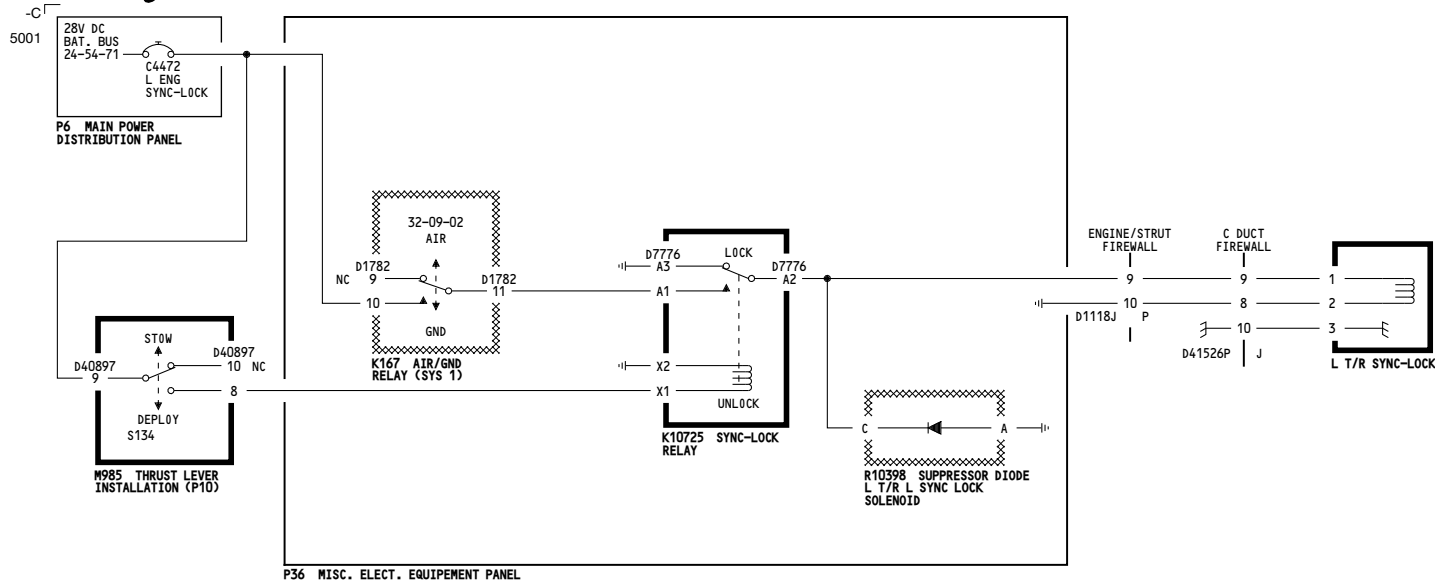
- NOTES:**
- SUPPLY
  - RETURN
  - PRESSURE

003-011	<b>RIGHT ENGINE THRUST REVERSER CONTROL</b>	Incorporates 78-0039 R01
D280N032S		

**78-34-02**

Page 102.1

Jan 21/2005



001-002

**LEFT ENGINE THRUST  
REVERSER SYNC-LOCK**

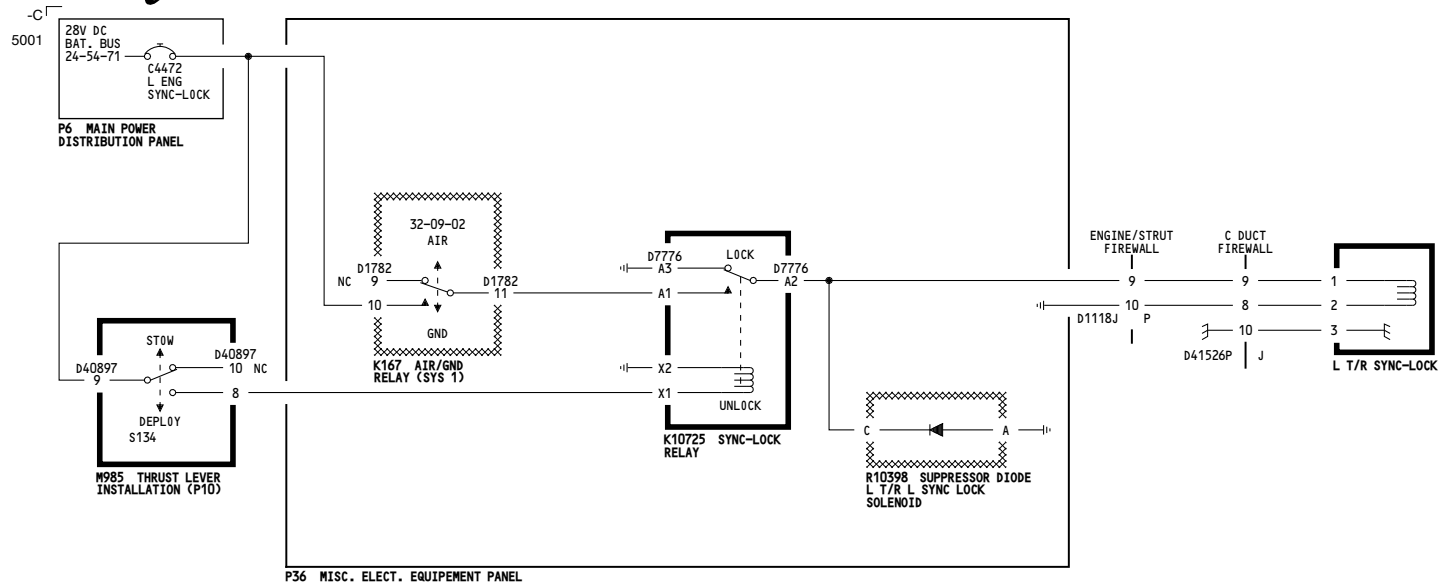
Incorporates  
78-0032 R03

D280N032S

**78-34-51**

Page 101.1

May 06/2009



003-099

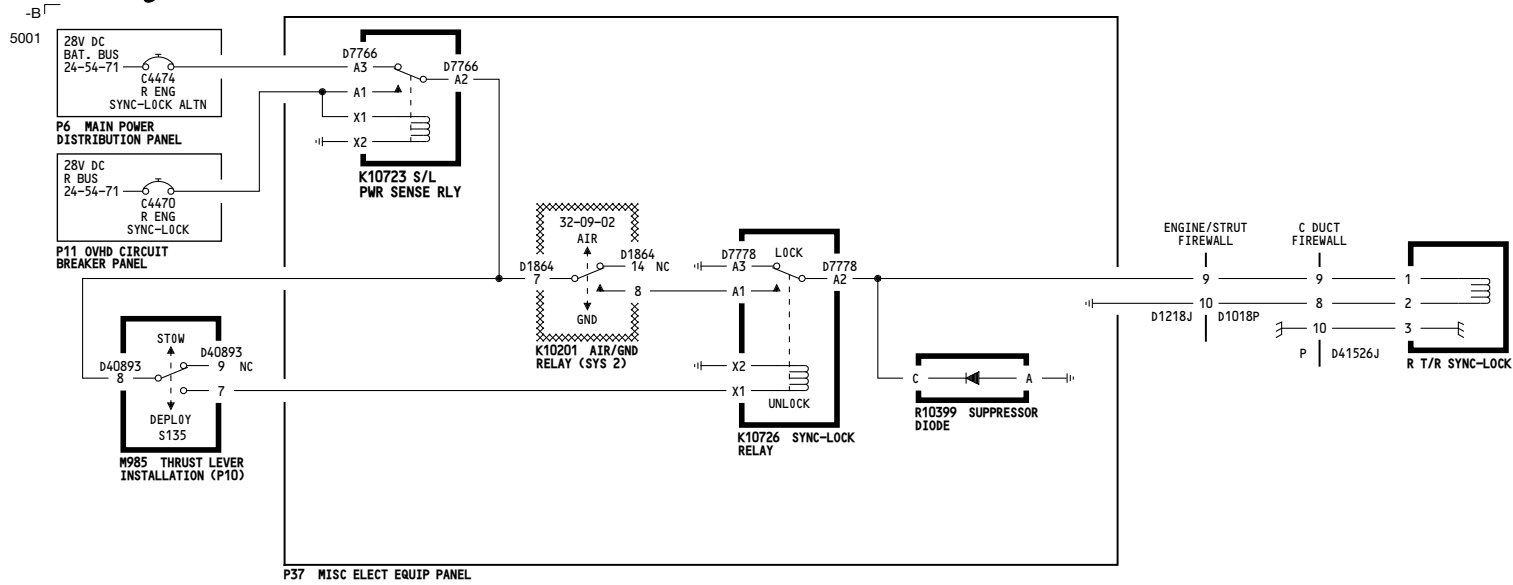
**LEFT ENGINE THRUST  
REVERSER SYNC-LOCK**

D280N032S

**78-34-51**

Page 102

Jan 21/2005



001-002

**RIGHT ENGINE THRUST  
REVERSER SYNC-LOCK**

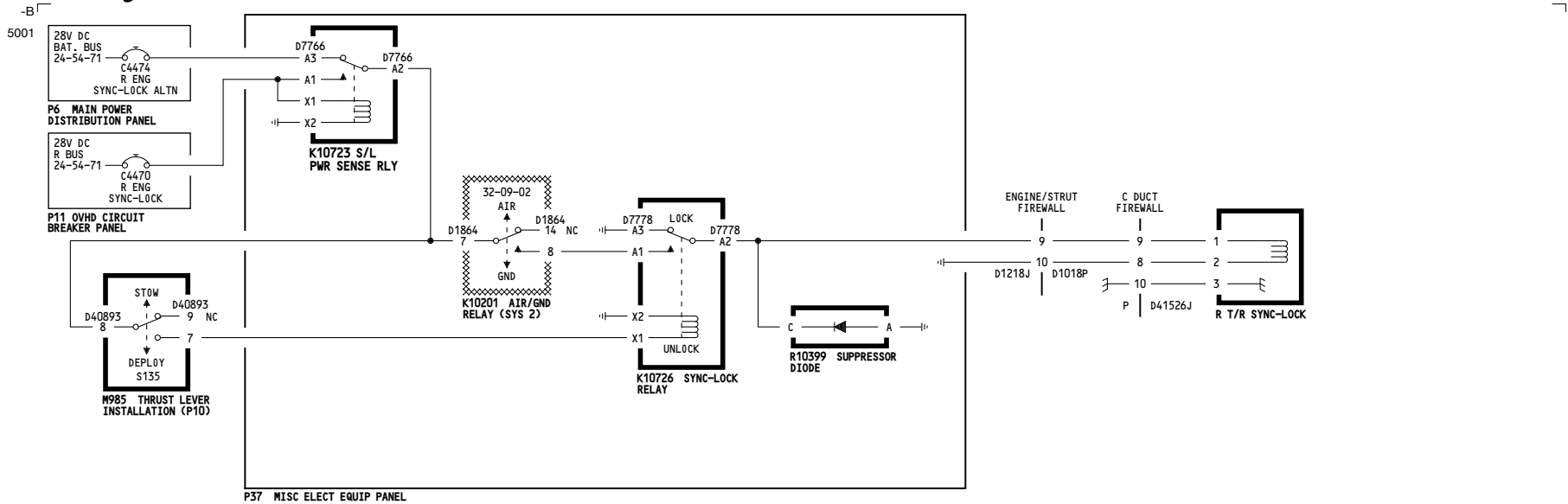
Incorporates  
78-0032 R03

D280N032S

**78-34-61**

Page 101.1

May 06/2009



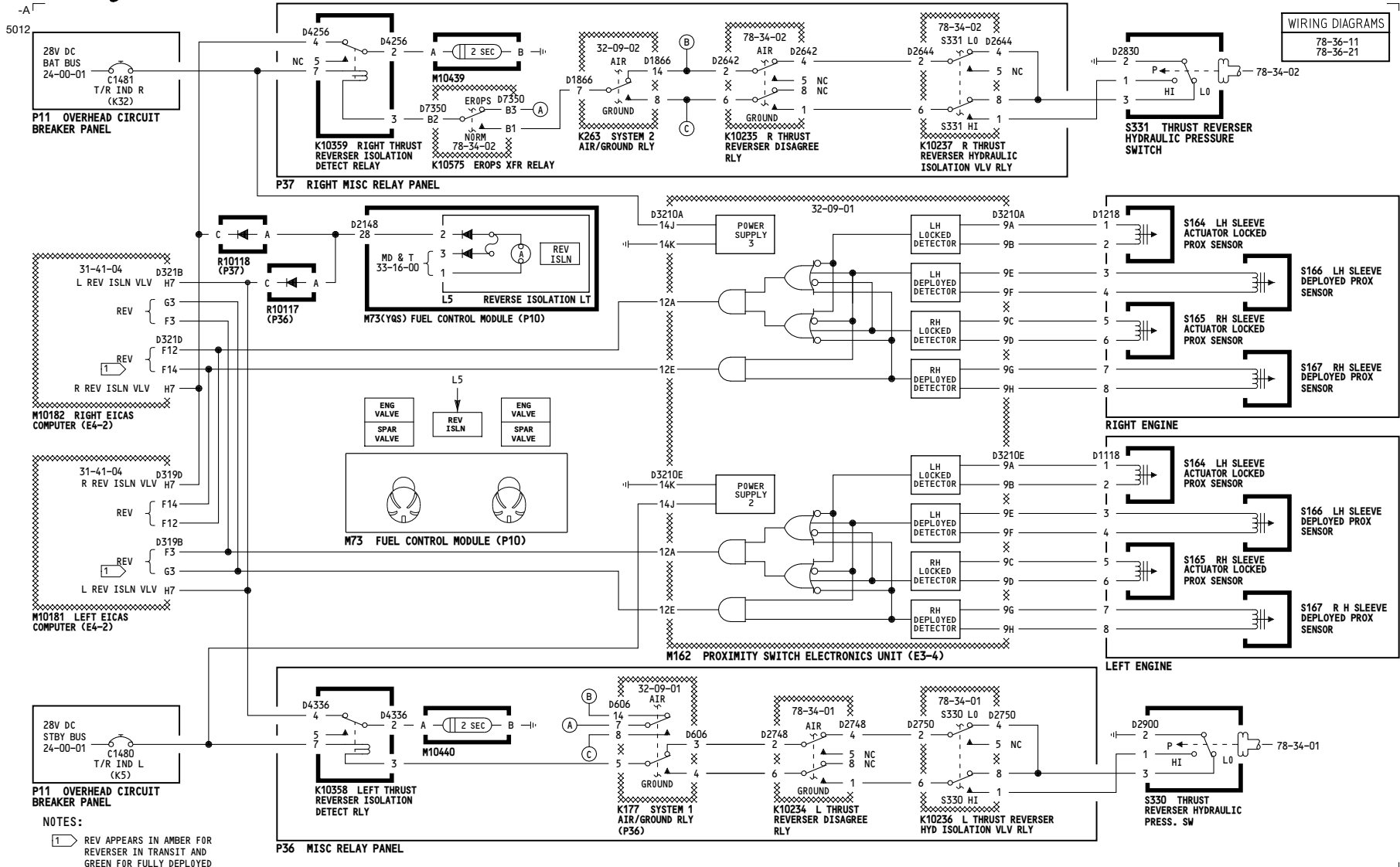
003-099	<p align="center"><b>RIGHT ENGINE THRUST REVERSER SYNC-LOCK</b></p> <p align="center">D280N032S</p>
---------	---

**78-34-61**

Page 102

Jan 21/2005



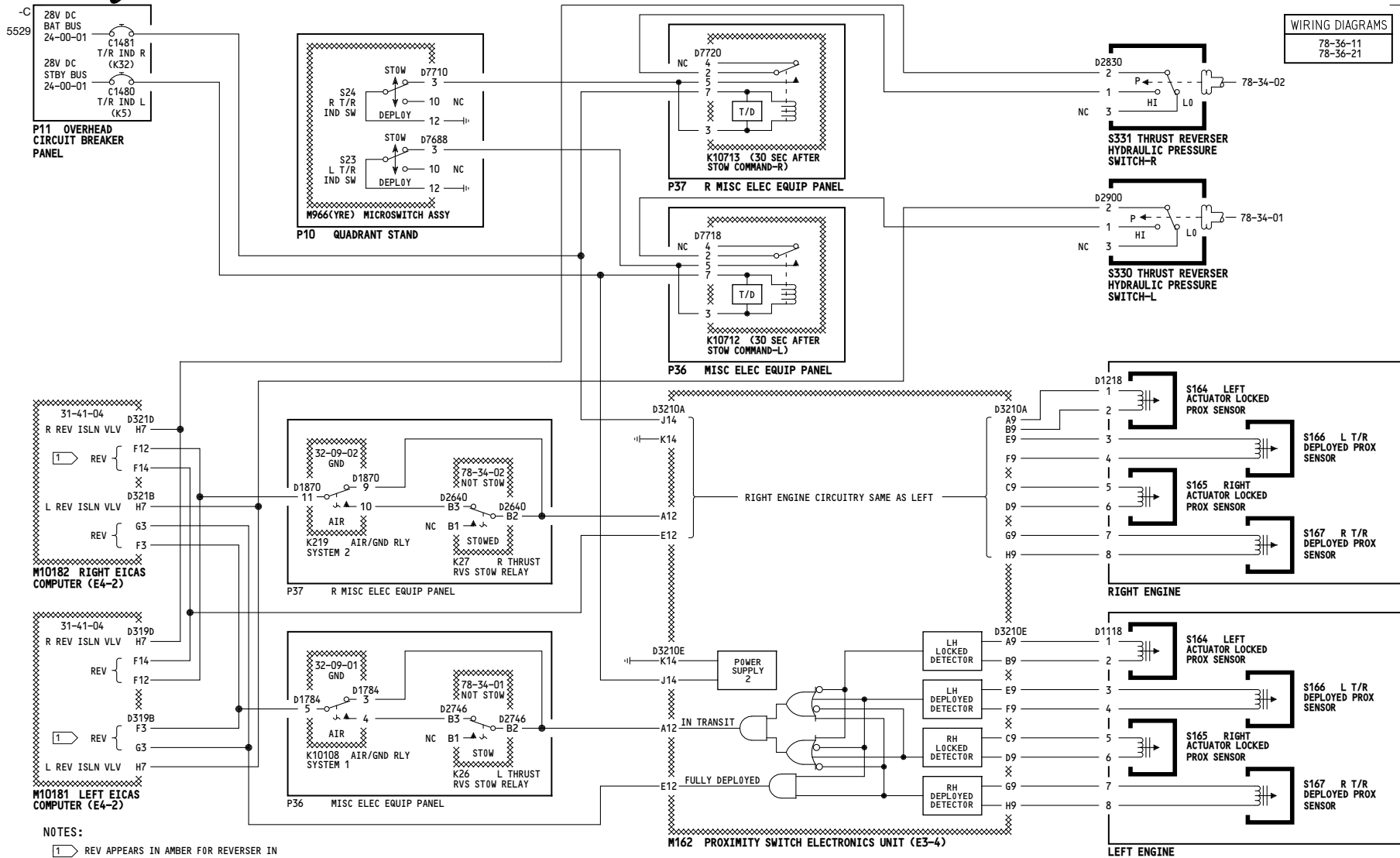


001-002

**THRUST REVERSER INDICATION**

D280N032S

**78-36-01**



001-002

**THRUST REVERSER INDICATION**

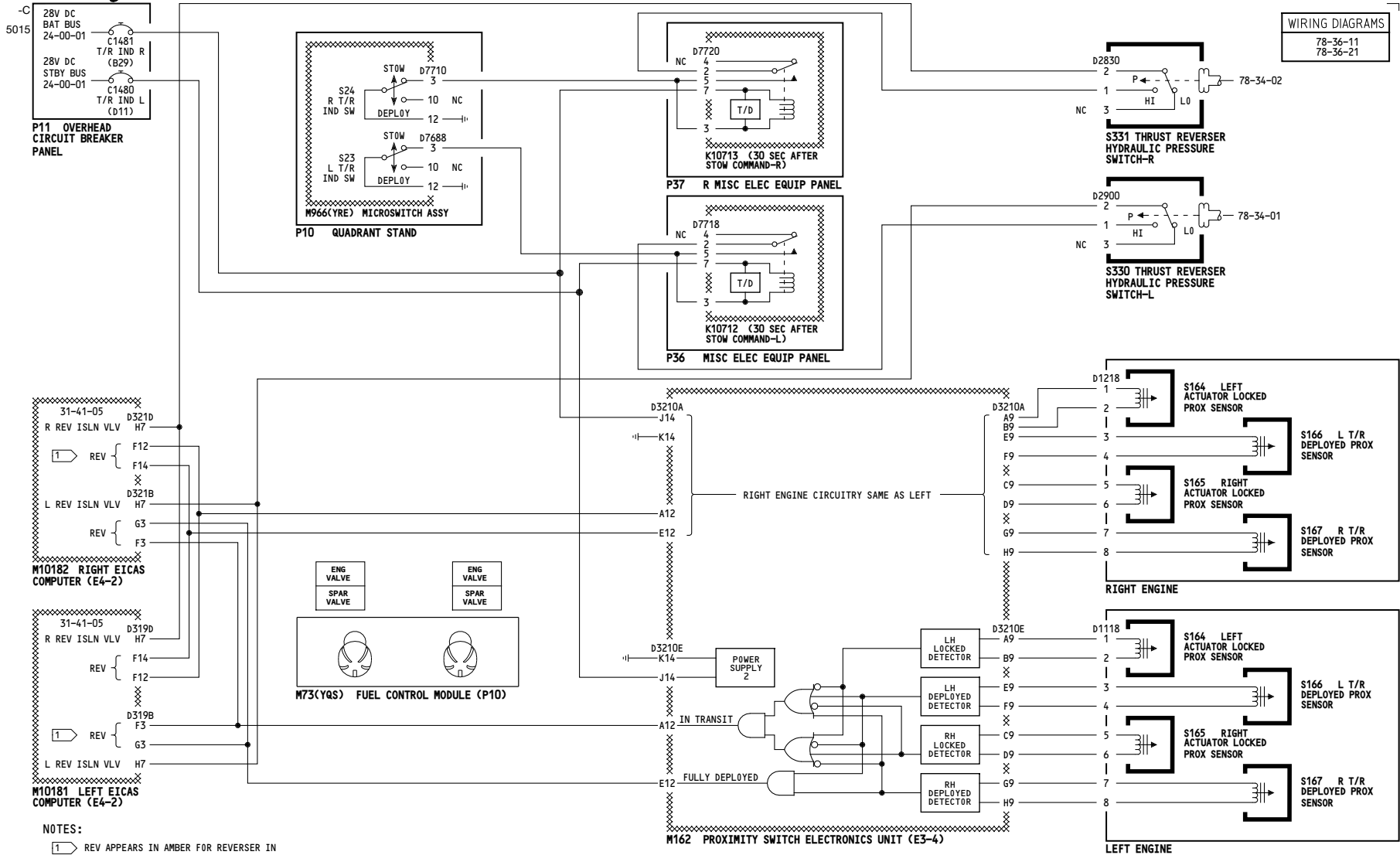
Incorporates  
78-0039 R01

D280N032S

**78-36-01**

Page 101.1

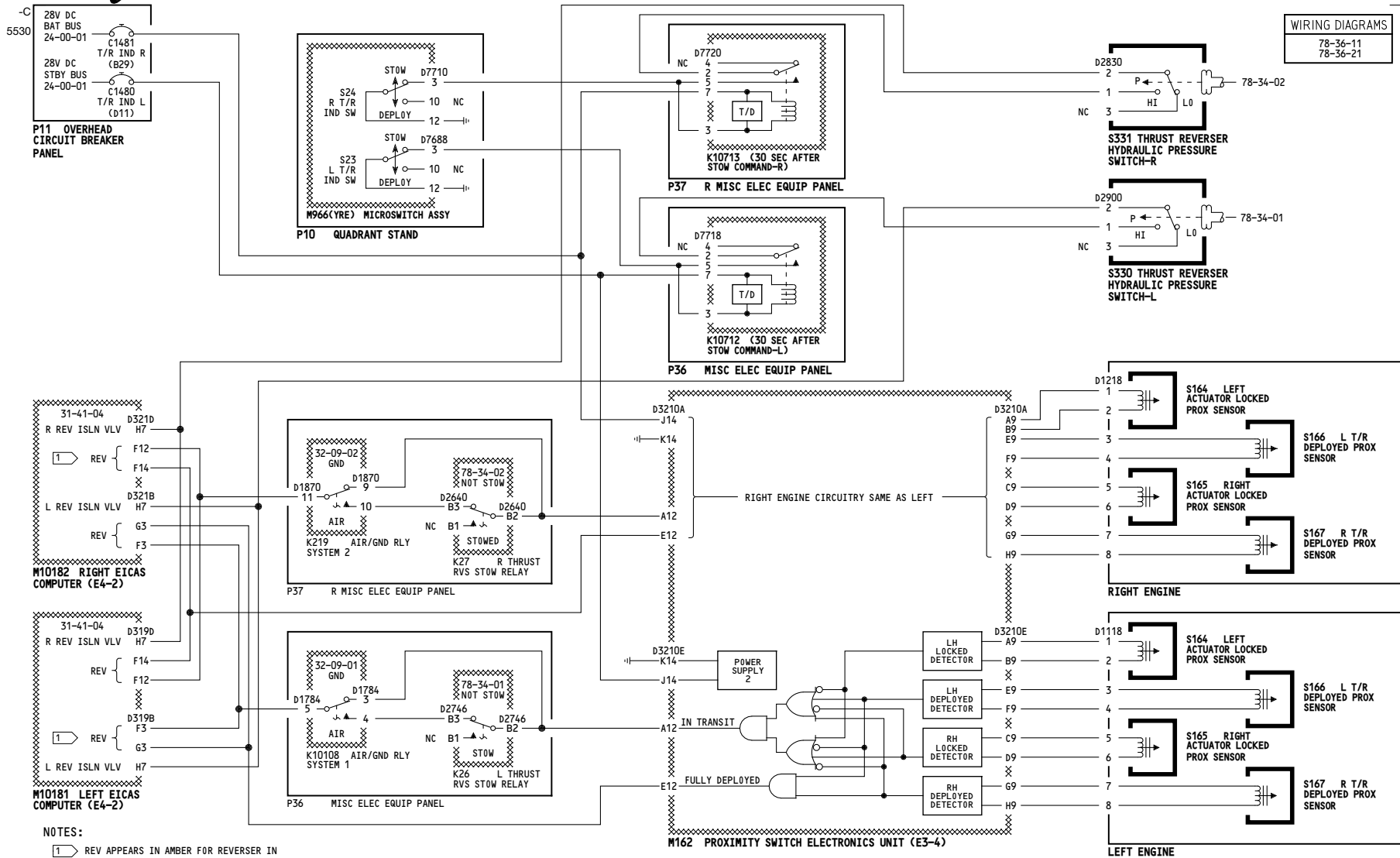
May 06/2009



NOTES:  
 1 REV APPEARS IN AMBER FOR REVERSER IN TRANSIT AND GREEN FOR FULLY DEPLOYED

003-099	<b>THRUST REVERSER INDICATION</b>
	D280N032S

**78-36-01**



003-009

**THRUST REVERSER INDICATION**

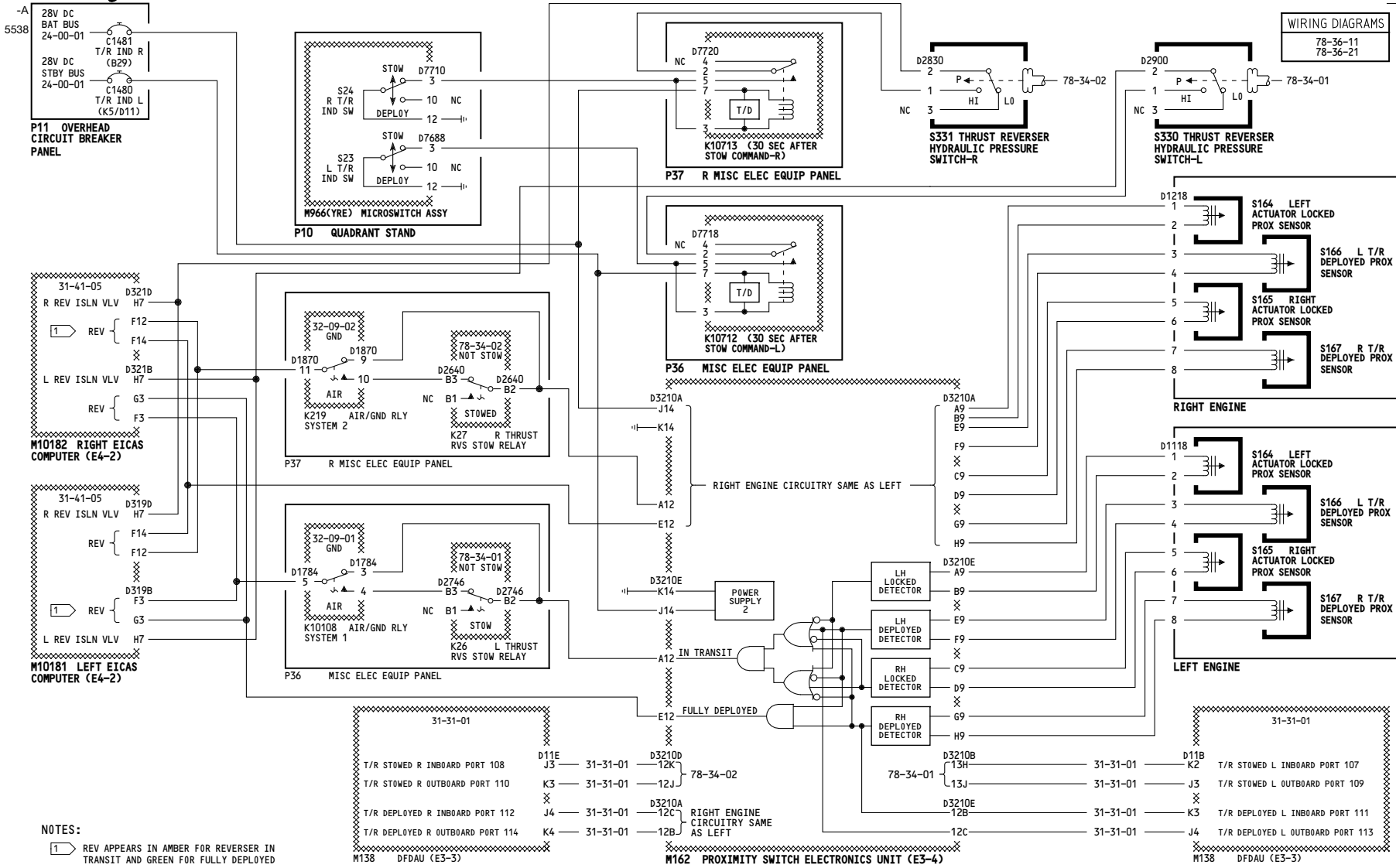
Incorporates  
78-0039 R01

D280N032S

**78-36-01**

Page 102.1

Jan 21/2005



**NOTES:**  
1 REV APPEARS IN AMBER FOR REVERSER IN TRANSIT AND GREEN FOR FULLY DEPLOYED

010-011	<b>THRUST REVERSER INDICATION</b>
D280N032S	

Incorporates  
31-0094  
78-0039 R01

**78-36-01**