

CHAPTER

71

POWER PLANT



757-200

WIRING DIAGRAM MANUAL

CHAPTER 71 POWER PLANT

CH-SC-SU	Schem	Page	Sheet	Date	CH-SC-SU	Schem	Page	Sheet	Date
71-EFFECTIVE PAGES									
		1		Oct 09/2008					
		2		BLANK					
71-CONTENTS									
		1		Dec 18/2007					
		2		BLANK					
71-ALPHABETICAL INDEX									
		1		Jan 21/2005					
		2		BLANK					
71-51-24									
		1	1	Jan 21/2005					
			2	Jan 21/2005					
			3	Jan 21/2005					
			4	Jan 21/2005					
			5	Jan 21/2005					
			6	Dec 18/2007					
			7	Jan 21/2005					
			8	Jan 21/2005					
			9	Jan 21/2005					

A = Added, R = Revised, D = Deleted, O = Overflow

71-EFFECTIVE PAGES

Page 1
Oct 09/2008

D280N032



757-200

WIRING DIAGRAM MANUAL

CHAPTER 71 POWER PLANT

Title	CH-SC-SU	Schem	Page	Sheet	Date	Effectivity
<u>ENGINE WIRE HARNESS</u>						
ENGINE WIRING COMPOSITE - RB211-535E4 / 11,/14,/16 ENGINE TYPES	71-51-24		1	1	Jan 21/2005	ALL
				2	Jan 21/2005	ALL
				3	Jan 21/2005	ALL
				4	Jan 21/2005	ALL
				5	Jan 21/2005	ALL
				6	Dec 18/2007	ALL
				7	Jan 21/2005	ALL
				8	Jan 21/2005	ALL
				9	Jan 21/2005	ALL

71-CONTENTS

D280N032

BOEING PROPRIETARY - Copyright © Unpublished Work - See title page for details

Page 1
Dec 18/2007



757-200

WIRING DIAGRAM MANUAL

CHAPTER 71 POWER PLANT

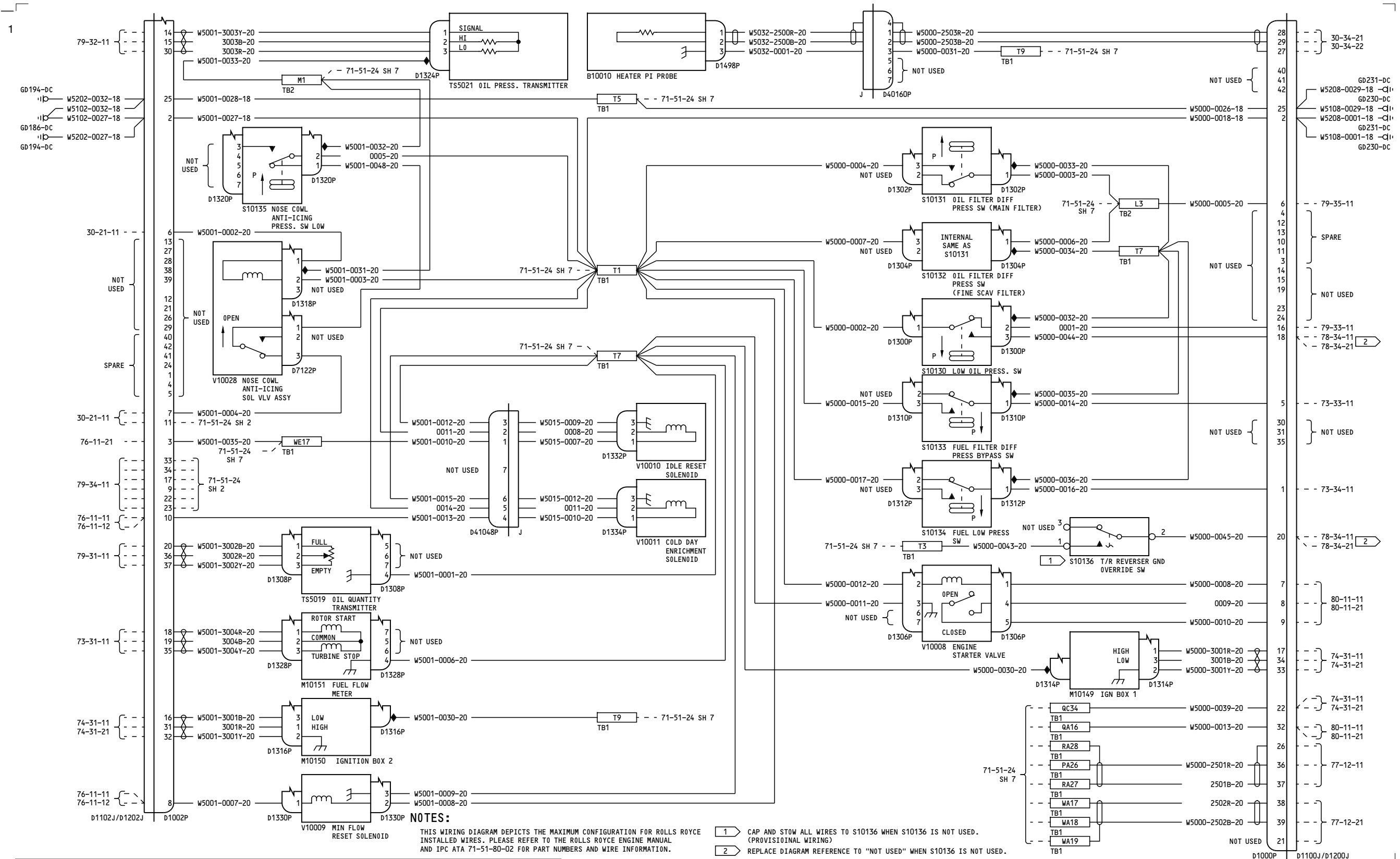
CH-SC-SU	Title
71-51-24	ENGINE WIRING COMPOSITE - RB211-535E4 /11,/14,/16 ENGINE TYPES

71-ALPHABETICAL INDEX

D280N032

BOEING PROPRIETARY - Copyright © Unpublished Work - See title page for details

Page 1
Jan 21/2005



ALL

ENGINE WIRING COMPOSITE - RB211-535E4 /11,/14,/16 ENGINE TYPES

D280N032

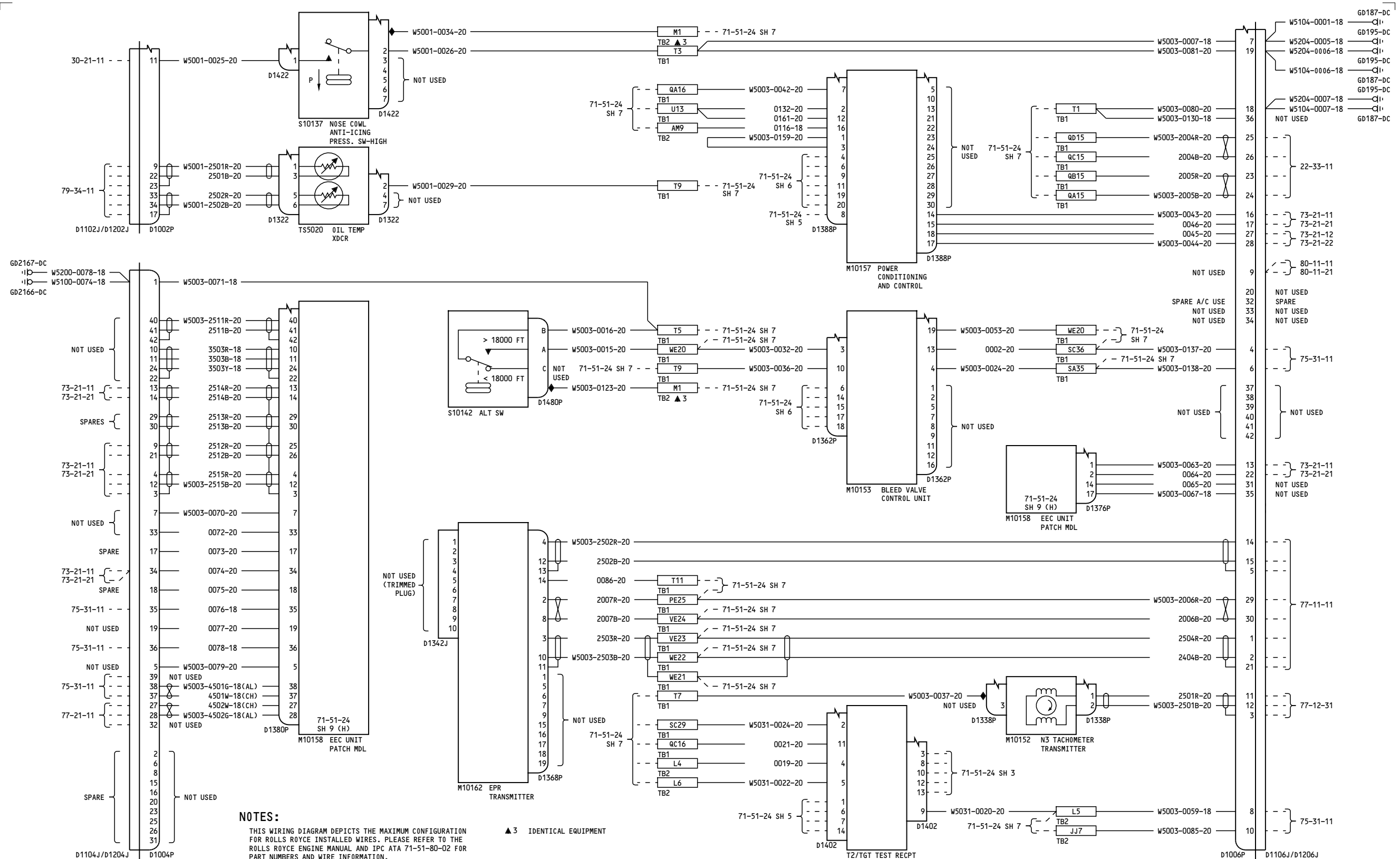
71-51-24

Page 1
Sheet 1
Jan 21/2005

71-51-24

Page 1
Sheet 1
Jan 21/2005

-A
1



ALL

**ENGINE WIRING COMPOSITE -
RB211-535E4 /11,14,16
ENGINE TYPES**

D280N032

71-51-24

Page 1
Sheet 2
Jan 21/2005

71-51-24

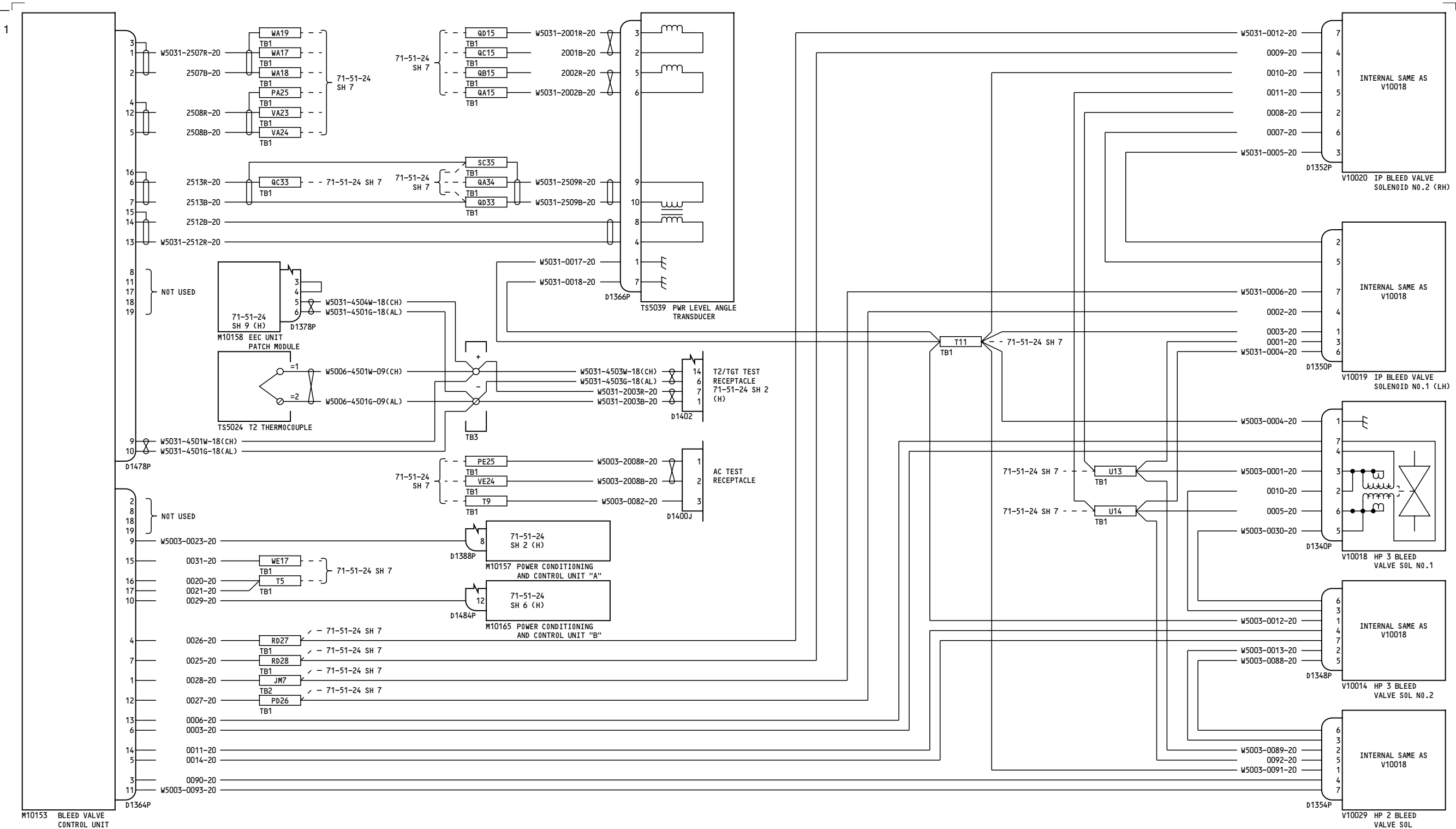
Page 1
Sheet 2
Jan 21/2005



71-51-24

Page 1
Sheet 3
Jan 21/2005





NOTES:
THIS WIRING DIAGRAM DEPICTS THE MAXIMUM CONFIGURATION FOR ROLLS ROYCE INSTALLED WIRES. PLEASE REFER TO THE ROLLS ROYCE ENGINE MANUAL AND IPC ATA 71-51-80-02 FOR PART NUMBERS AND WIRE INFORMATION.

ALL

**ENGINE WIRING COMPOSITE -
RB211-535E4 /11, /14, /16
ENGINE TYPES**

D280N032

71-51-24

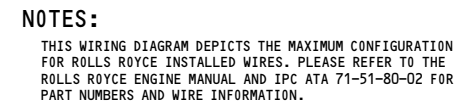
Page 1
Sheet 5
Jan 21/2005

71-51-24

Page 1
Sheet 5
Jan 21/2005



1



ENGINE WIRING COMPOSITE - RB211-535E4 /11,/14,/16 ENGINE TYPES

71-51-24

Page 1
Sheet 6
Dec 18/2007

71-51-24

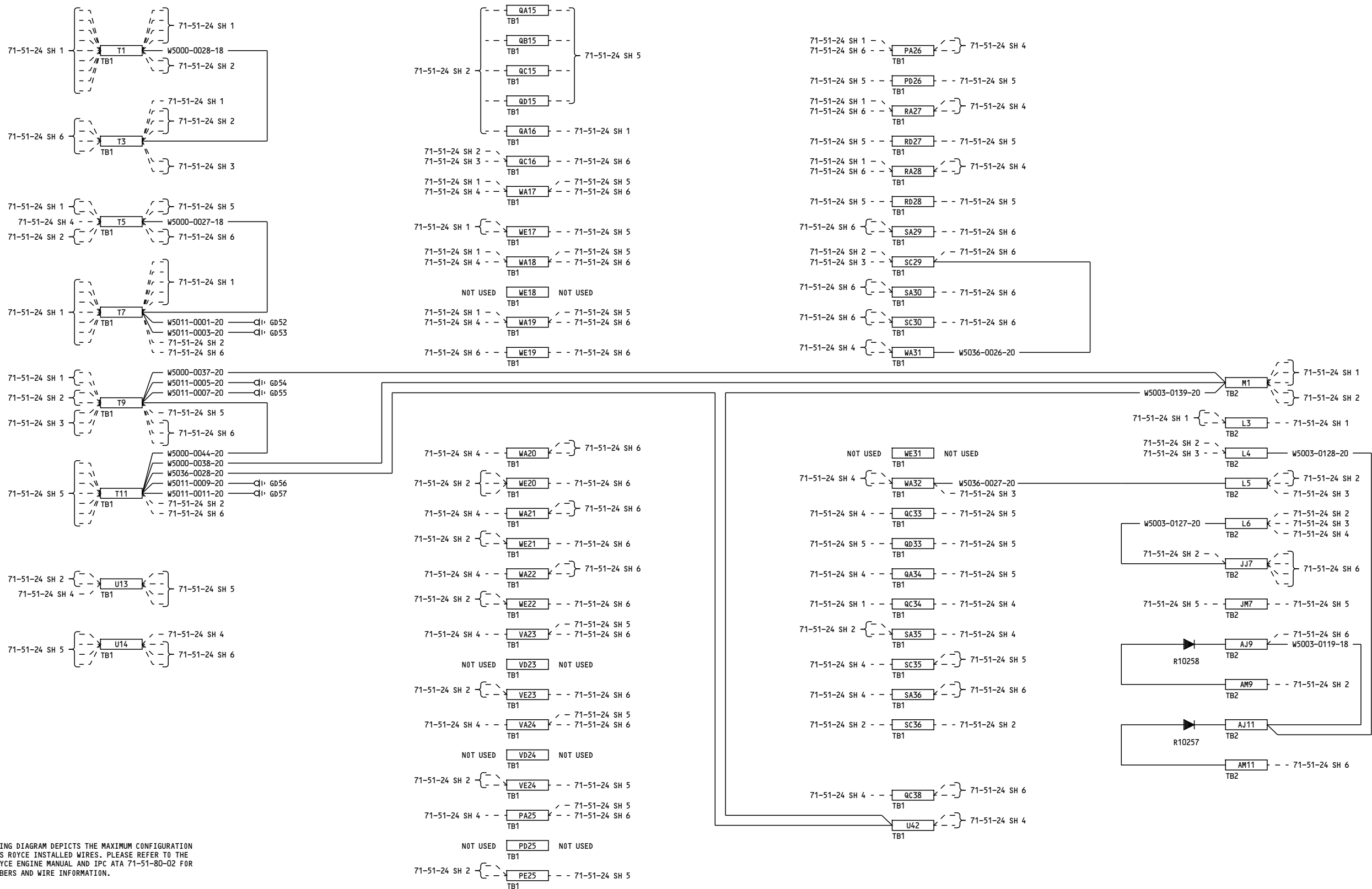
Page 1
Sheet 6
Dec 18/2007

BOEING PROPRIETARY - Copyright © - Unpublished Work - See title page for details.

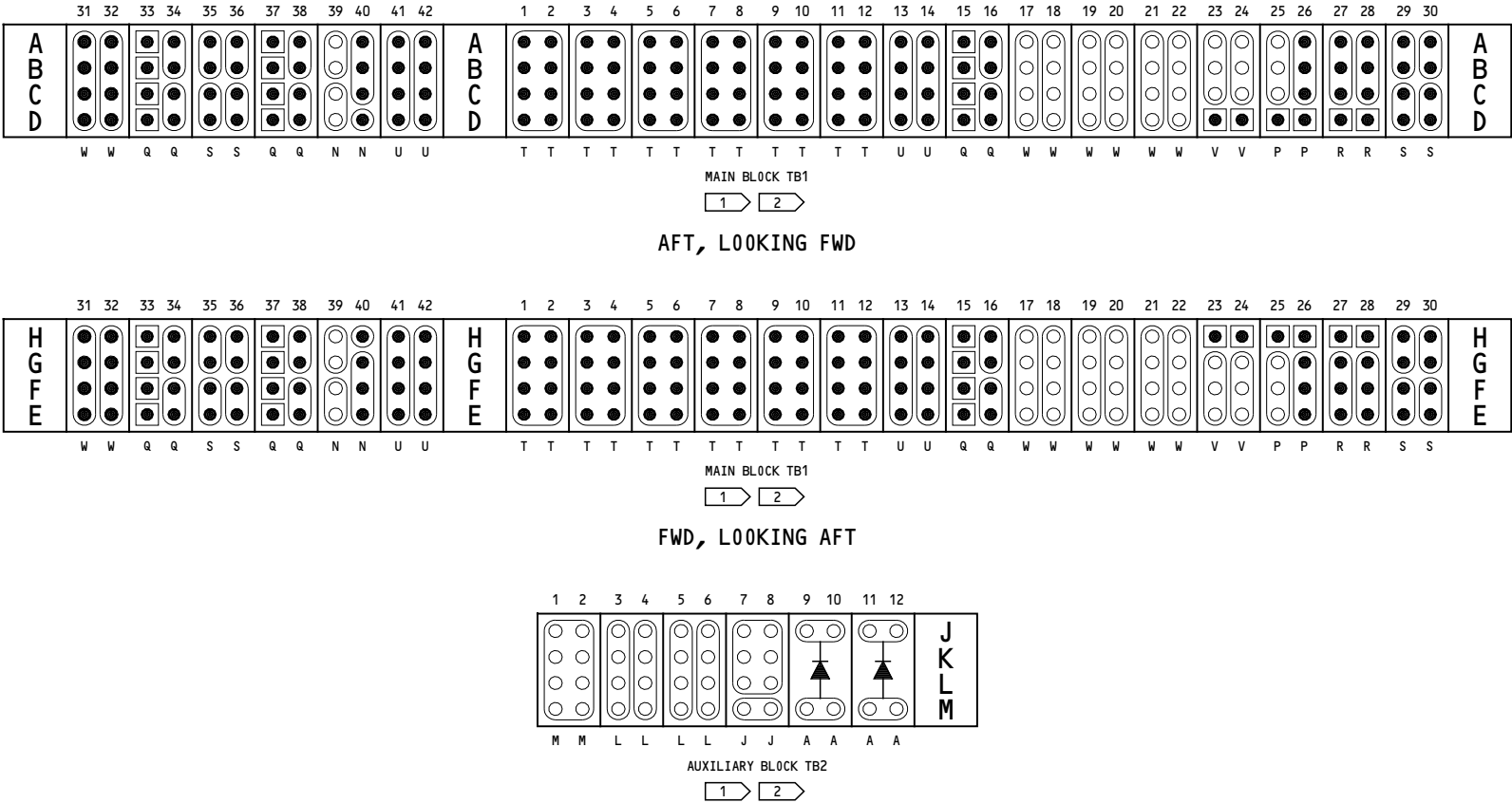


757-200 WIRING DIAGRAM MANUAL

-A
1



NOTES:
THIS WIRING DIAGRAM DEPICTS THE MAXIMUM CONFIGURATION FOR ROLLS ROYCE INSTALLED WIRES. PLEASE REFER TO THE ROLLS ROYCE ENGINE MANUAL AND IPC ATA 71-51-80-02 FOR PART NUMBERS AND WIRE INFORMATION.

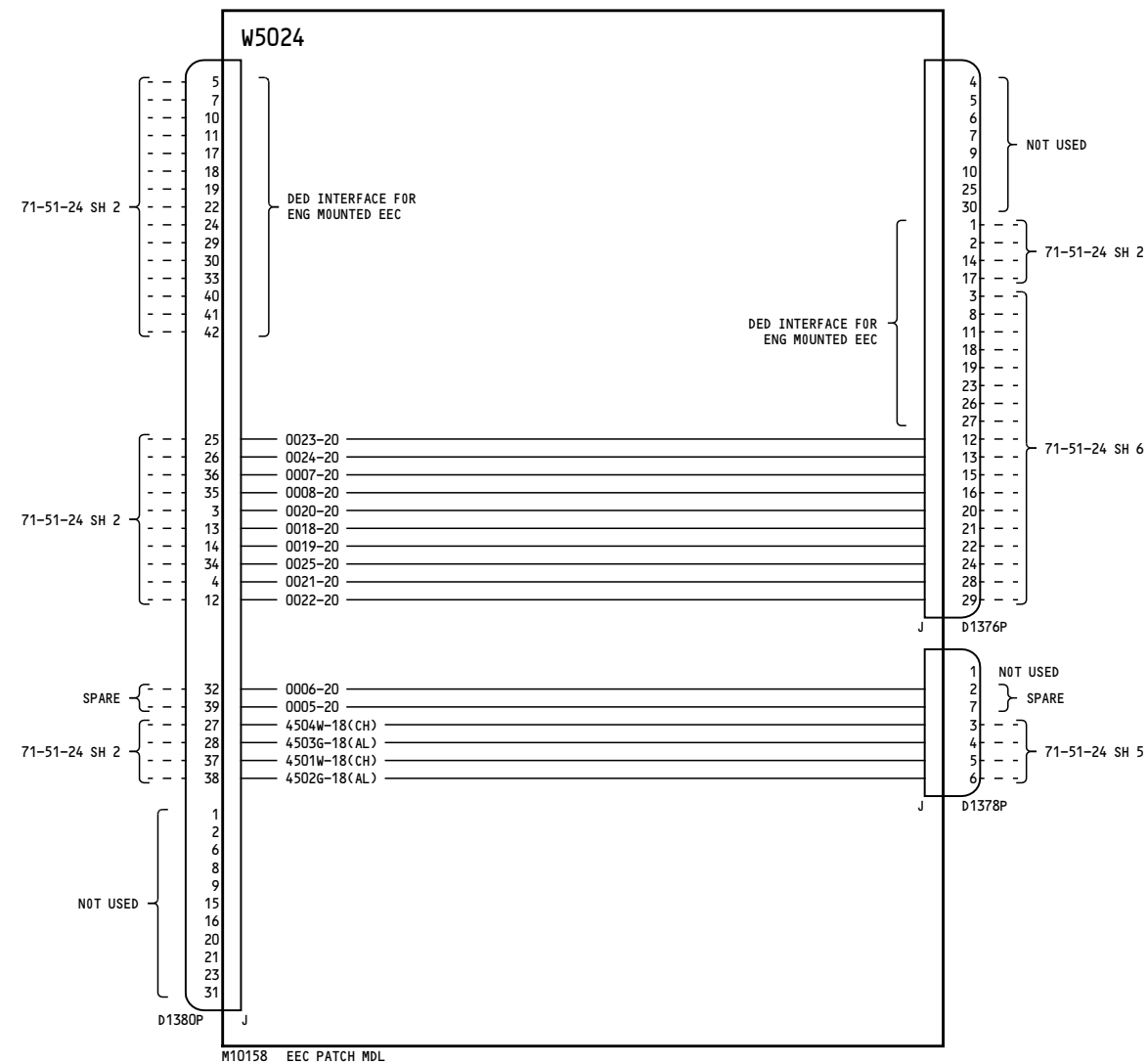


NOTES:

- 1 THE LETTERS ALONG THE BOTTOM OF THESE ILLUSTRATIONS DESIGNATE DIFFERENT TYPES OF TERMINAL BLOCKS.
- 2 SOLID CONTACTS ARE CONNECTED THROUGH ELECTRICALLY (1A THROUGH 1D ARE INTERNALLY CONNECTED TO 1E THROUGH 1H RESPECTIVELY). OPEN CONTACTS ARE NOT CONNECTED THROUGH ELECTRICALLY ON EACH TERMINAL BLOCK.

THIS WIRING DIAGRAM DEPICTS THE MAXIMUM CONFIGURATION FOR ROLLS ROYCE INSTALLED WIRES. PLEASE REFER TO THE ROLLS ROYCE ENGINE MANUAL AND IPC ATA 71-51-80-02 FOR PART NUMBERS AND WIRE INFORMATION.

ALL	ENGINE WIRING COMPOSITE - RB211-535E4 /11,/14,/16 ENGINE TYPES
	D280N032



NOTES:
THIS WIRING DIAGRAM DEPICTS THE MAXIMUM CONFIGURATION FOR ROLLS ROYCE INSTALLED WIRES. PLEASE REFER TO THE ROLLS ROYCE ENGINE MANUAL AND IPC ATA 71-51-80-02 FOR PART NUMBERS AND WIRE INFORMATION.

ALL	ENGINE WIRING COMPOSITE - RB211-535E4 /11,/14,/16 ENGINE TYPES
	D280N032