

**CHAPTER**

**07**

**LIFTING AND SHORING**



767

# ILLUSTRATED TOOL AND EQUIPMENT MANUAL

## CHAPTER 07 LIFTING AND SHORING

Subject/Page	Date	Subject/Page	Date	Subject/Page	Date
EFFECTIVE PAGES					
1	Apr 10/2008				
2	BLANK				
07-CONTENTS					
1	Oct 10/2007				
2	BLANK				
07-00-01					
1	Apr 10/2006				
2	Apr 10/2006				
07-00-02					
1	Apr 10/2006				
2	Apr 10/2006				
3	Apr 10/2006				
4	BLANK				
07-00-03					
1	Apr 10/2006				
2	Apr 10/2006				
07-00-04					
1	Apr 10/2006				
2	Apr 10/2006				
07-00-05					
1	Apr 10/2006				
2	Apr 10/2006				
3	Apr 10/2006				
4	Apr 10/2006				
07-00-06					
1	Apr 10/2006				
2	BLANK				
07-10-01					
1	Oct 10/2007				
2	BLANK				
07-10-02					
1	Apr 10/2006				
2	Apr 10/2006				
07-10-03					
1	Oct 10/2007				
2	Apr 10/2006				

A = Added, R = Revised, O = Overflow, D = Deleted

# 07-EFFECTIVE PAGES

Page 1  
Apr 10/2008

D634T501



767

## ILLUSTRATED TOOL AND EQUIPMENT MANUAL

### TABLE OF CONTENTS

<u>Subject</u>	<u>Title</u>	<u>Part No.</u>
<b>07-</b>	<b>LIFTING AND SHORING</b>	
07-00-01	JACK ADAPTER - FORWARD BODY	A07001-1, -11
07-00-02	JACK ADAPTER - OUTBOARD WING	A07003-1
07-00-03	JACKING BAR SET - MAIN LANDING GEAR AXLE	A07004-1, -8
07-00-04	HOIST ADAPTER - AIRPLANE RECOVERY	A07005-1, -2
07-00-05	JACKING BAR EQUIPMENT - MAIN LANDING GEAR AXLE	A07008-1, -19, -25, -26, -27, -28, -29
07-00-06	JACKING BAR EQUIPMENT - MAIN LANDING GEAR AXLE	A07009-1
07-10-01	SLING - TETHERING/LIFTING AIRPLANE RECOVERY	3OHME65B00002
07-10-02	EMERGENCY JACKING EQUIPMENT - NOSE LANDING GEAR	A07002-1, -11, -12
07-10-03	SLING EQUIPMENT - TETHERING/LIFTING AIRPLANE RECOVERY	J07008-1, -22, -30

# 07-CONTENTS

Page 1  
Oct 10/2007

D634T501



767

## ILLUSTRATED TOOL AND EQUIPMENT MANUAL

PART NUMBER: A07001-1, -11

**NAME:** JACK ADAPTER - FORWARD BODY

**AIRPLANE MAINTENANCE:** YES

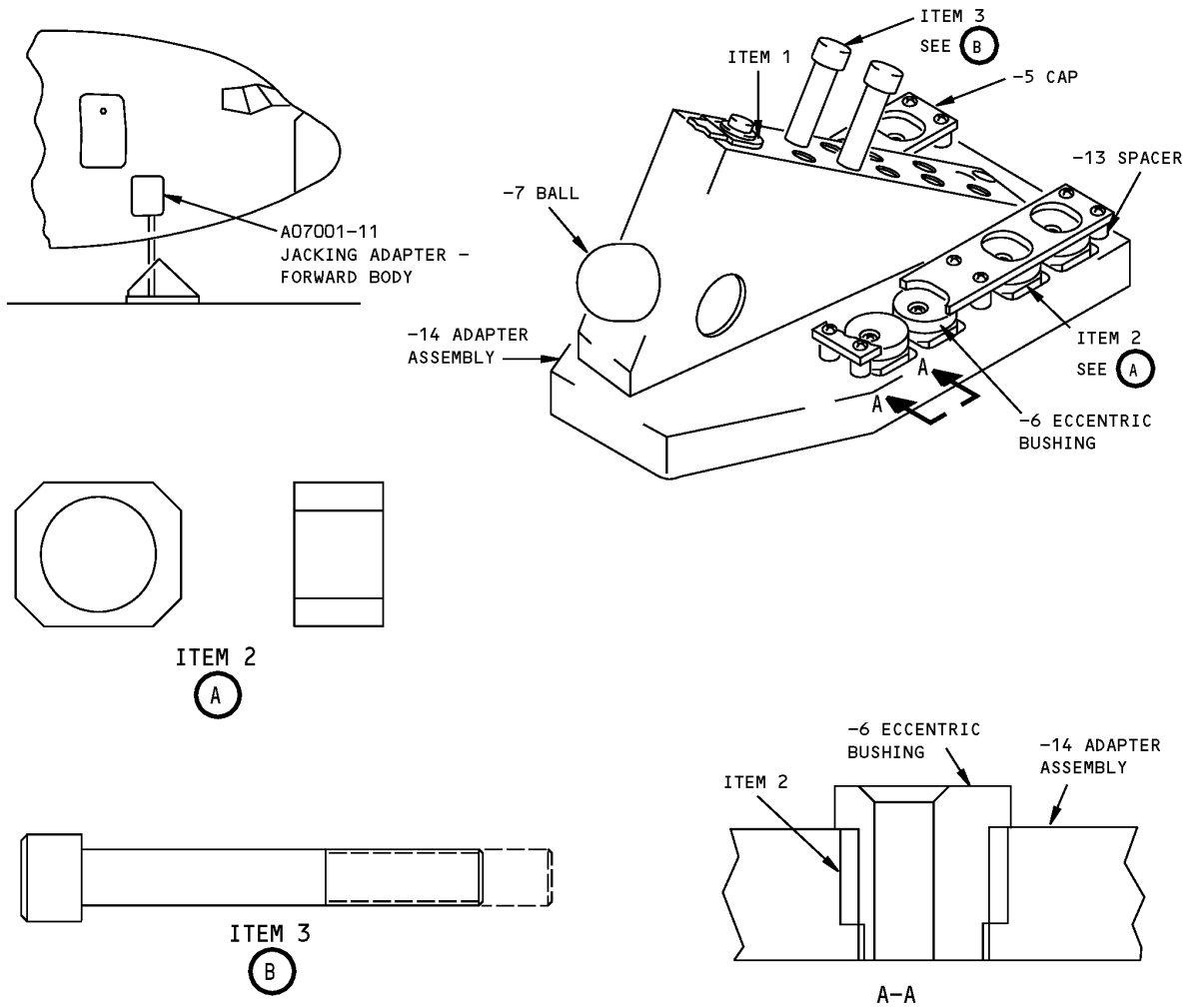
**COMPONENT MAINTENANCE:** NO

**USAGE & DESCRIPTION:** This tool is used with a customer-supplied tripod jack to mate with the airplane forward body at BS 287.0 and RBL 73.0.

**DIMENSIONS:** 6 x 6 x 12 inches

**NOTE:** A07001-11 replaces A07001-1 for future procurement.

ILLUSTRATED TOOL AND EQUIPMENT MANUAL



Forward Body Jack Adapter  
Figure 1

REPAIRABLE/REPLACEABLE PARTS			
ITEM NO.	PART NO.	NOMENCLATURE	VENDOR CODE
1	BACJ40CG6G	JUMPER ASSEMBLY	V91812
2	-16	BUSHING	
3	-12	SOCKET HEAD CAP SCREW	



767

## ILLUSTRATED TOOL AND EQUIPMENT MANUAL

**PART NUMBER: A07003-1**

**NAME:** JACK ADAPTER - OUTBOARD WING

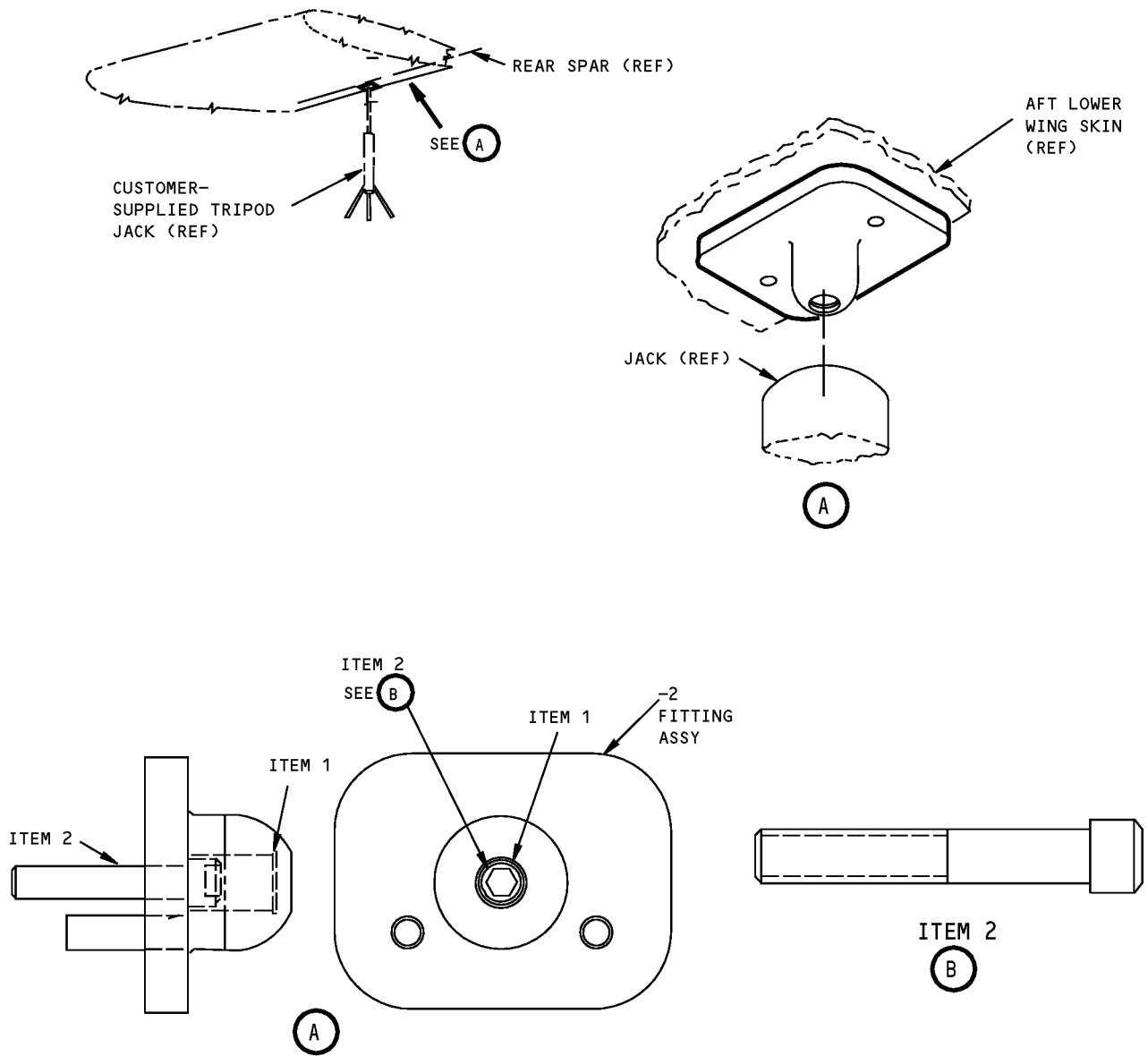
**AIRPLANE MAINTENANCE:** YES

**COMPONENT MAINTENANCE:** NO

**USAGE & DESCRIPTION:** This tool is used with a customer-supplied tripod jack, to provide a mating jacking point on the airplane wing.

**DIMENSIONS:** 2 x 3 x 4 inches (51 x 76 x 102 mm)

**ILLUSTRATED TOOL AND EQUIPMENT MANUAL**



**Outboard Wing Jack Adapter  
Figure 1**



767

ILLUSTRATED TOOL AND EQUIPMENT MANUAL

REPAIRABLE/REPLACEABLE PARTS			
ITEM NO.	PART NO.	NOMENCLATURE	VENDOR CODE
1	5008-62	RETAINING RING	V79136
2	-5	SOCKET HD CAP SCREW	





767

## ILLUSTRATED TOOL AND EQUIPMENT MANUAL

**PART NUMBER: A07004-1, -8**

**NAME:** JACKING BAR SET - MAIN LANDING GEAR AXLE

**AIRPLANE MAINTENANCE:** YES

**COMPONENT MAINTENANCE:** NO

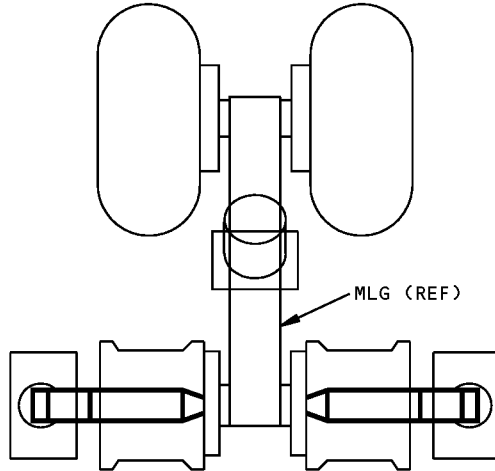
**USAGE & DESCRIPTION:** This tool is used to jack the Main Landing Gear (MLG) when all rubber is gone from tires. The jacking bar set is used with customer-supplied standard hydraulic jacks with 30-ton capacity. When sufficient ground clearance is achieved, a standard gear jack is used. Two jacking bars are required.

**WEIGHT:** 124 Lbs (56 kg)

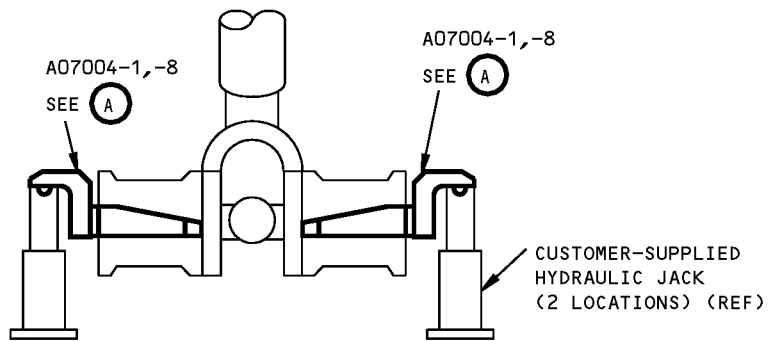
**DIMENSIONS:** 10 x 18 x 28 inches (254 x 457 x 711 mm)

**NOTE:** A07008-1 supersedes A07004-13  
A07008-8 is used exclusively on airplanes VA707-VA799, VB055, VB283-VB320, VB323-VB370, VE001-VJ999.  
A07008-1 is used on all other airplanes  
A07008-1 replaces A07004-1 and -8 for future procurement.  
A07004-1, -8 are shown below.

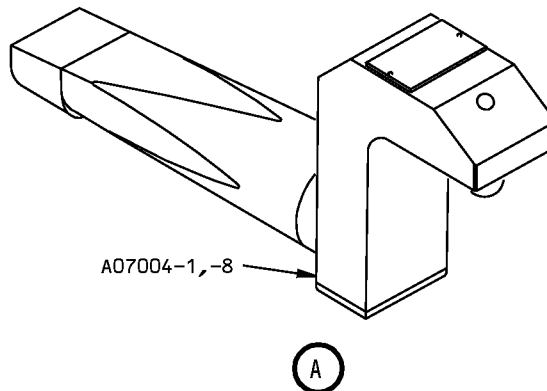
**767  
ILLUSTRATED TOOL AND EQUIPMENT MANUAL**



**PLAN VIEW**



**END VIEW**



**Main Landing Gear Axle Jacking Bar Set  
Figure 1**



767

**ILLUSTRATED TOOL AND EQUIPMENT MANUAL**

**PART NUMBER: A07005-1, -2**

**NAME:** HOIST ADAPTER - AIRPLANE RECOVERY

**AIRPLANE MAINTENANCE:** YES

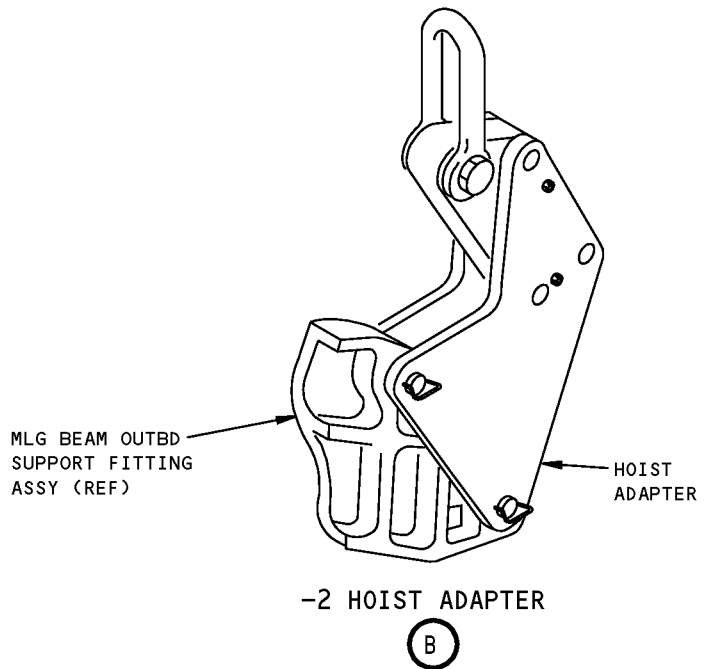
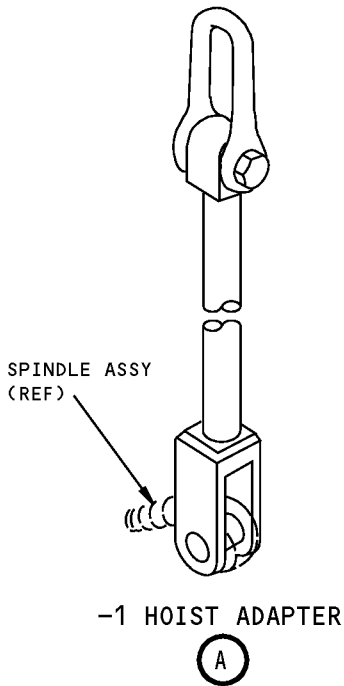
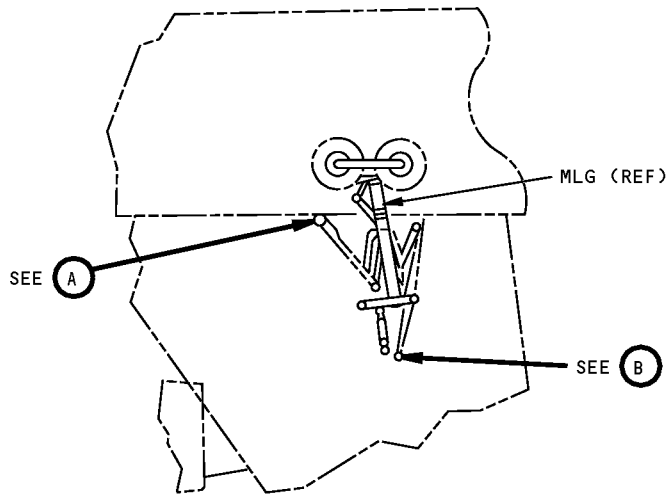
**COMPONENT MAINTENANCE:** NO

**USAGE & DESCRIPTION:** This tool is used to lift airplane during damaged airplane recovery. The A07005-1 consists of a rod assy. The A07005-2 consists of plates and pin assemblies. Both attach to the MLG.

**WEIGHT:** A07005-1 - 235 lbs (107 kg)  
A07005-2 - 550 lbs (249 kg)

**DIMENSIONS:** A07005-1 - 5 x 6 x 108 inches (127 x 152 x 2743 mm)  
A07005-2 - 10 x 24 x 30 inches (254 x 610 x 762 mm)

**ILLUSTRATED TOOL AND EQUIPMENT MANUAL**



**Airplane Recovery Hoist Equipment  
Figure 1**



767

## ILLUSTRATED TOOL AND EQUIPMENT MANUAL

**PART NUMBER: A07008-1, -19, -25, -26, -27, -28, -29**

**NAME:** JACKING BAR EQUIPMENT - MAIN LANDING GEAR AXLE

**AIRPLANE MAINTENANCE:** YES

**COMPONENT MAINTENANCE:** NO

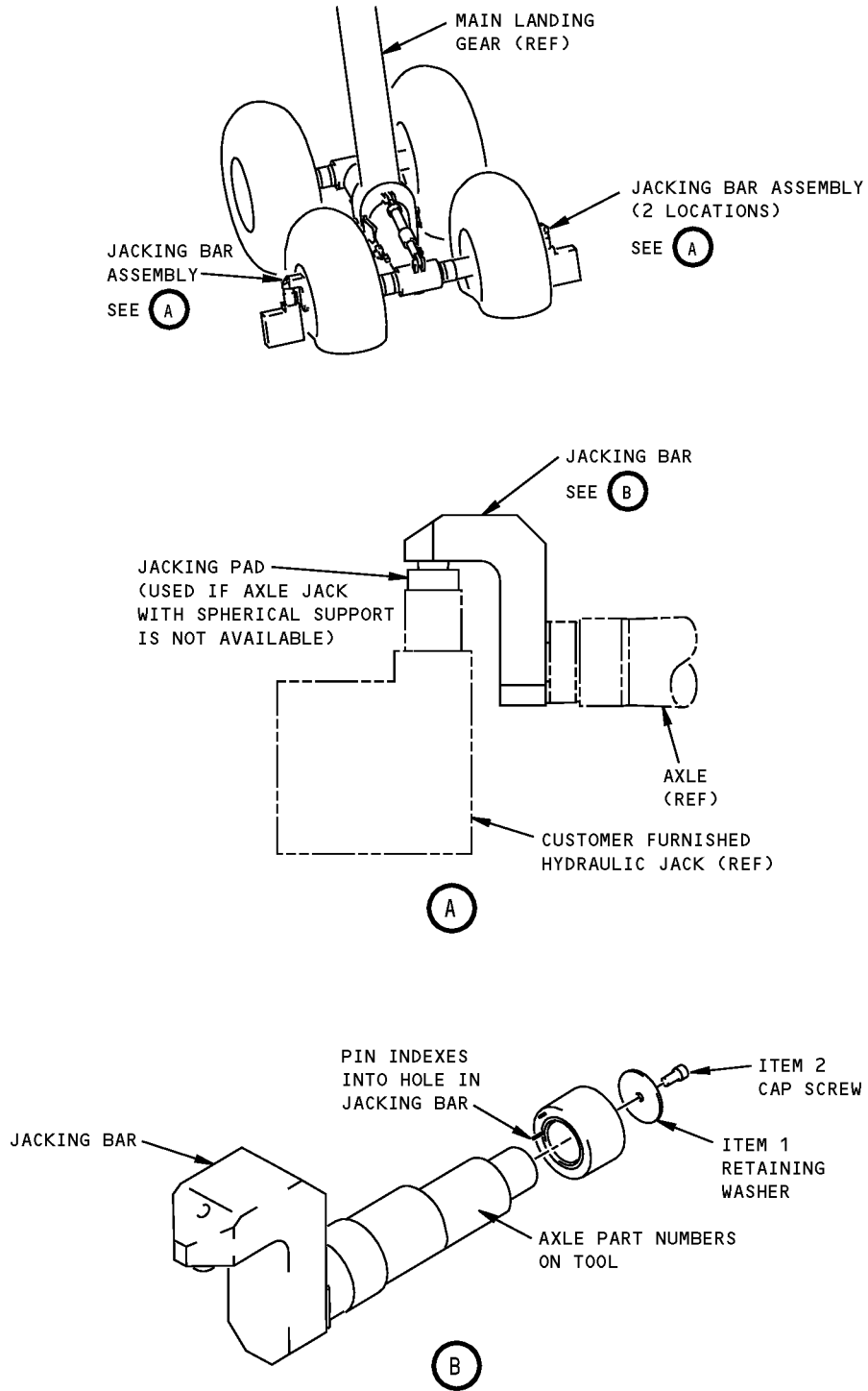
**USAGE & DESCRIPTION:** This jacking bar equipment is used to jack the main landing gear when all the rubber is gone from the wheels. It is used to jack up the main gear just until sufficient ground clearance is available for using a standard gear jack. Refer to AMM 07-11-03 for further usage instructions. This tool consists of the -1, -19, -25 jacking bar equipment, their related hardware and storage boxes. It also consists of the -26, -27, -28, -29 jacking bar bushing assemblies and their storage boxes. For information on airplane model to tool dashnumber applicability please see the usage tables in Figure 2.

**WEIGHT:** A07008-1, -19 - 126 lbs (57 kg) each (excluding box)  
A07008-25 - 110 lbs (50 kg) (excluding box)  
A07008-26, -27, -28, -29 - 4 lbs (2 kg) each (excluding box)

**DIMENSIONS:** A07008-1, -19, -25 - 4 x 14 x 21 inches (102 x 356 x 533 mm) each  
A07008-26, -27, -28, -29 - 2 x 4 x 8 inches (41 x 102 x 203 mm) each

**NOTE:** A07008-19 replaces A07008-1 for future procurement.  
A07008-1 supersedes A07004-13.  
A07008-1 replaces A07004-1, and -8 for future procurement.  
A07008-19 is equivalent to -25, -26, -27, -28 and -29 combined.

**ILLUSTRATED TOOL AND EQUIPMENT MANUAL**



**Main Landing Gear Axle Jacking Bar Equipment  
Figure 1**

**ILLUSTRATED TOOL AND EQUIPMENT MANUAL**

JACKING BAR EQUIPMENT		
A07008	CONSISTS OF	AIRPLANE APPLICABILITY
-25	(2) -20 JACKING BAR ASSEMBLIES AND RELATED HARDWARE* -30 STORAGE BOX. <u>NOTE:</u> THE -25 DOES NOT INCLUDE ANY OF THE INBOARD BUSHINGS THAT ARE REQUIRED FOR USE. BUSHING ASSEMBLIES CAN BE PURCHASED SEPARATELY.	APPLICABILITY DEPENDENT UPON THE TYPE OF INBOARD BUSHING THAT IS USED WITH THE -25. THE -25 JACKING BAR EQUIPMENT WILL FIT ALL INBOARD BUSHINGS. SEE JACKING BAR BUSHING ASSEMBLY TABLE FOR BUSHING TO AIRPLANE APPLICABILITY.
-19	(2) -20 JACKING BAR ASSEMBLIES AND RELATED HARDWARE* (2) -3 INBOARD BUSHING ASSEMBLIES (2) -4 INBOARD BUSHING ASSEMBLIES (2) -21 INBOARD BUSHING ASSEMBLIES (2) -22 INBOARD BUSHING ASSEMBLIES -23 STORAGE BOX	ALL 767 MODELS EXCEPT 767-400.  767s WITH 161T1138-2 AXLES 767s WITH 161T1138-4 AXLES 767s WITH 161T1138-6,-8,-10 AXLES 767s WITH 161T1138-12 AXLES
-1	(2) -2 JACKING BAR ASSEMBLIES AND RELATED HARDWARE*  (2) -3 INBOARD BUSHING ASSEMBLIES (2) -4 INBOARD BUSHING ASSEMBLIES (2) -5 INBOARD BUSHING ASSEMBLIES -6 STORAGE BOX	ALL 767 MODELS EXCEPT THE: 767-300ER WITH 161T1138-10 767-300F WITH 161T1138-12 AXLES AND 767-400.  <u>NOTE:</u> THE -19 IS PREFERRED OVER THE -1 FOR FUTURE PROCUREMENT.

\*RELATED HARDWARE CONSISTS OF A MS16997-95 CAP SCREW, A -16 JACKING PAD, AND A -10 RETAINING WASHER.

JACKING BAR BUSHING ASSEMBLY		
A07008	CONSISTS OF	AIRPLANE APPLICABILITY
-26	(2) -3 INBOARD BUSHING ASSEMBLIES -31 STORAGE BOX	767s WITH 161T1138-2 AXLES
-27	(2) -4 INBOARD BUSHING ASSEMBLIES -32 STORAGE BOX	767s WITH 161T1138-4 AXLES
-28	(2) -21 INBOARD BUSHING ASSEMBLIES -33 STORAGE BOX	767s WITH 161T1138-6,-8,-10 AXLES
-29	(2) -22 INBOARD BUSHING ASSEMBLIES -34 STORAGE BOX	767s WITH 161T1138-12 AXLES

**Main Landing Gear Axle Jacking Bar Usage  
Figure 2**



767

ILLUSTRATED TOOL AND EQUIPMENT MANUAL

REPAIRABLE/REPLACEABLE PARTS			
ITEM NO.	PART NO.	NOMENCLATURE	VENVOR CODE
1	-10	RETAINING WASHER	
2	MS16997-95	CAP SCREW	



ILLUSTRATED TOOL AND EQUIPMENT MANUAL

**PART NUMBER: A07009-1**

**NAME:** JACKING BAR EQUIPMENT - MAIN LANDING GEAR AXLE

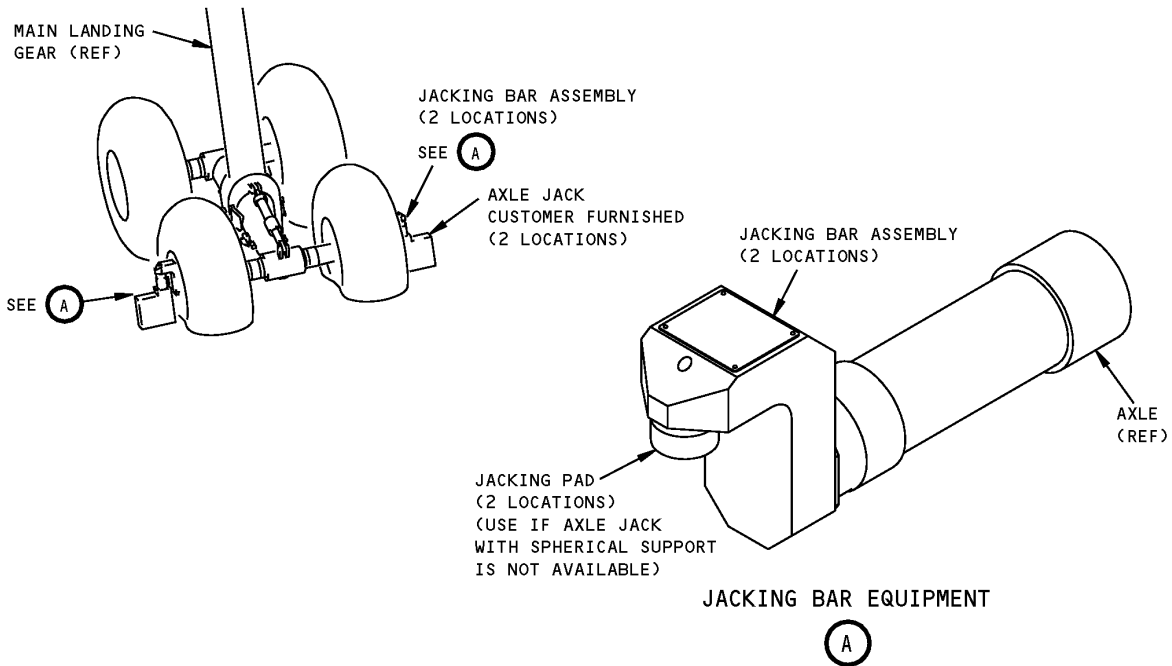
**AIRPLANE MAINTENANCE:** YES

**COMPONENT MAINTENANCE:** NO

**USAGE & DESCRIPTION:** This tool is used to facilitate jacking the main landing gear with flat or no tires. The gear is jacked up until sufficient clearance is available for using standard gear jack. Refer to AMM 07-11-03 for further usage instructions. This tool is used on 767-400 airplanes. This tool consists of 2 jacking bar assemblies, 2 jacking pads and a storage box assembly.

**WEIGHT:** 180 lbs (82 kg)

**DIMENSIONS:** 9 x 10 x 23 inches (229 x 254 x 584 mm)



**Main Landing Gear Jacking Bar Equipment  
Figure 1**



767

## ILLUSTRATED TOOL AND EQUIPMENT MANUAL

**PART NUMBER: 3OHME65B00002**

**NAME:** SLING - TETHERING/LIFTING AIRPLANE RECOVERY

**AIRPLANE MAINTENANCE:** YES

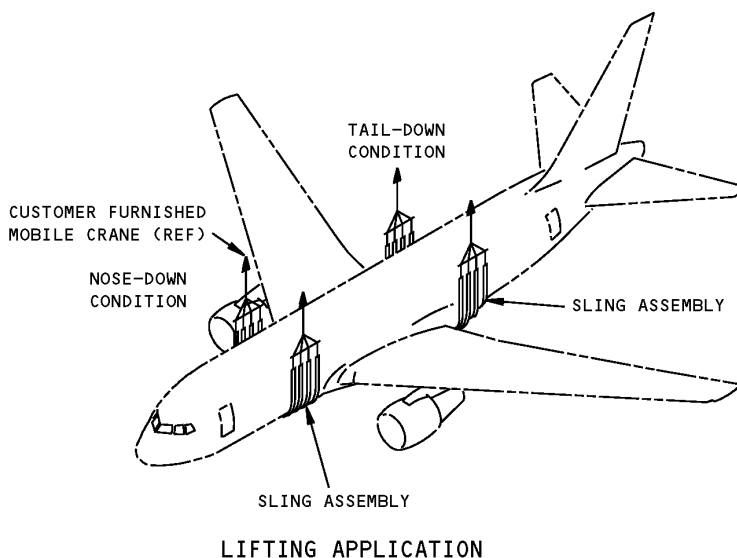
**COMPONENT MAINTENANCE:** NO

**USAGE & DESCRIPTION:** This tool is used to provide lifting points on the Forward and Aft fuselage to facilitate use of mobile cranes during airplane recovery. This tool consists of strap assemblies, beam assemblies, sling assemblies, cable assemblies, pad assemblies, associated hardware and a storage box assembly.

**WEIGHT:** 1700 lbs (771 kg)

**DIMENSIONS:** 36 x 48 x 72 inches (914 x 1219 x 1829 mm)

**NOTE:** J07008 replaces 3OHME65B00002 for future procurement.



**Tethering/Lifting Airplane Recovery Sling  
Figure 1**



767

## ILLUSTRATED TOOL AND EQUIPMENT MANUAL

**PART NUMBER:** A07002-1, -11, -12

**NAME:** EMERGENCY JACKING EQUIPMENT - NOSE LANDING GEAR

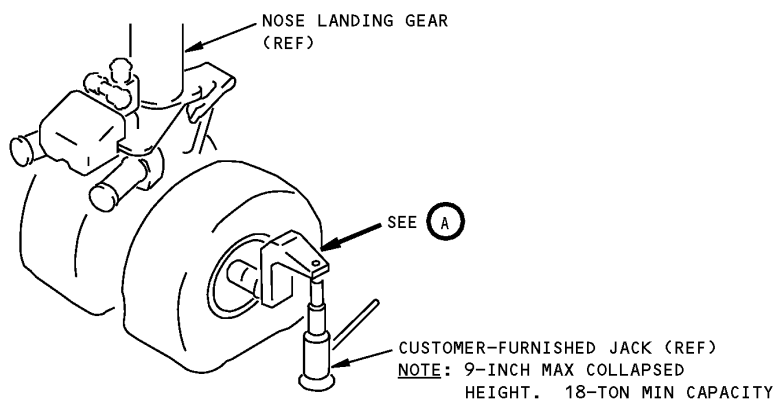
**AIRPLANE MAINTENANCE:** YES

**COMPONENT MAINTENANCE:** NO

**USAGE & DESCRIPTION:** This tool is used to lift the Nose Landing Gear (NLG) when both tires are flat or when there is insufficient clearance to use a standard jack. The -1 is used on 767s, prior to line number 360, with internally threaded axles installed. The -11 is used on 767s, line number 360 and on, with externally threaded axles installed. The -12 can be used on 767s with or without externally threaded axles. The tool consists of a bar assembly and a criteria tag. The bar assembly consists of a bar, a press fit ball and a warning tag. The bar is placed on the nose gear axle and the press fit ball acts as a locator for the customer supplied jack. One bar assembly is required for a nose landing gear.

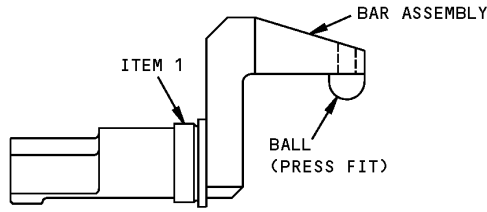
**WEIGHT:** 41 lbs (19 kg)

**DIMENSIONS:** 8 x 10 x 22 inches (203 x 254 x 559 mm)



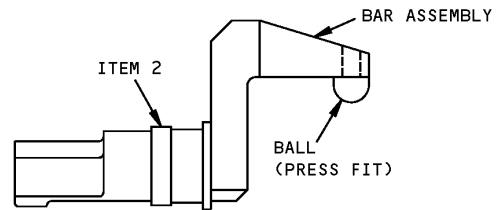
**Nose Landing Gear Emergency Jacking Equipment  
Figure 1**

ILLUSTRATED TOOL AND EQUIPMENT MANUAL



BAR ASSEMBLY  
A07002-1

(A)



BAR ASSEMBLY  
A07002-11,-12

(A)

Nose Landing Gear Emergency Jacking Equipment Bar Assembly  
Figure 2

REPAIRABLE/REPLACEABLE PARTS			
ITEM NO.	PART NO.	NOMENCLATURE	VENDOR CODE
1	-3	NUT	
2	-15	SLEEVE	



767

## ILLUSTRATED TOOL AND EQUIPMENT MANUAL

**PART NUMBER: J07008-1, -22, -30**

**NAME:** SLING EQUIPMENT - TETHERING/LIFTING AIRPLANE RECOVERY

**AIRPLANE MAINTENANCE:** YES

**COMPONENT MAINTENANCE:** NO

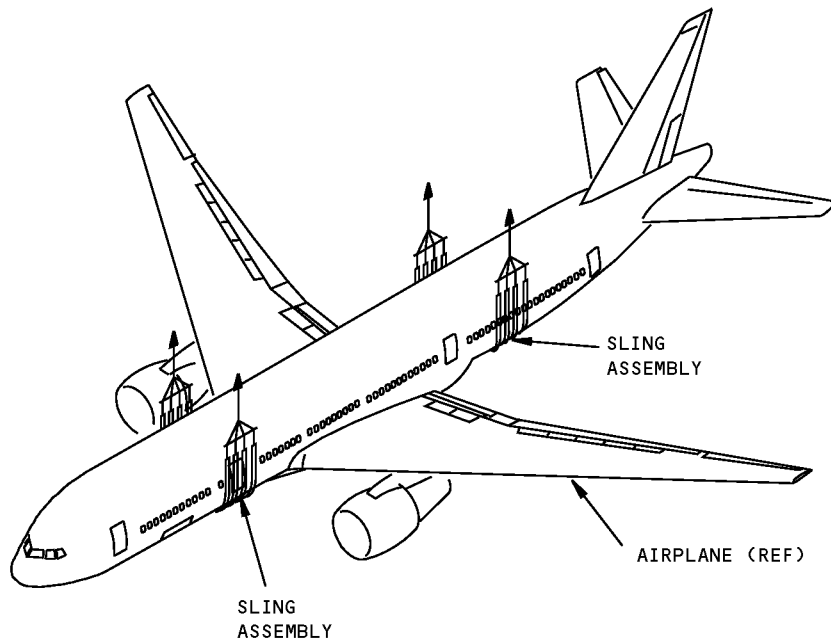
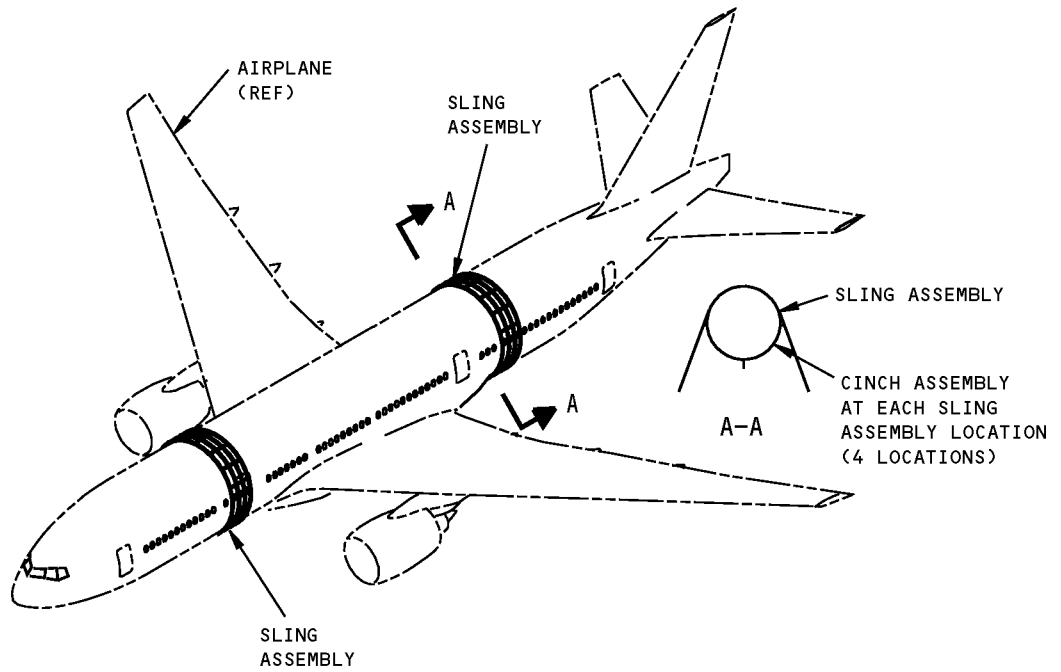
**USAGE & DESCRIPTION:** The J07008-1, -22, -30 sling equipment is used on all 767 airplanes. This tool is used during airplane recovery on the Forward/ Aft body to stabilize the airplane while lifting it with mobile cranes. The tool is also used to tie down the airplane during transportation or to tether the airplane in high wind conditions. Refer to the 767 Airplane Recovery Document chapter 3-30-13 and current J07008 drawing for further usage instructions. Each of -1, -22 and -30 consist of 2 sling assemblies, 4 spreader bar assemblies, 8 cinch assemblies and a storage box assembly.

**WEIGHT:** J07008-1 - 668 lbs (303 kg)  
J07008-22 - 680 lbs (308 kg)  
J07008-30 - 680 lbs (308 kg)

**DIMENSIONS:** 36 x 60 x 72 inches (914 x 1524 x 1829 mm)

**NOTE:** J07008-30 replaces J07008-22 for future procurement.  
J07008-22 replaces J07008-1 for future procurement.  
J07008 replaces 3OHME65B00002 for future procurement.

**767  
ILLUSTRATED TOOL AND EQUIPMENT MANUAL**



J07008-1,-22,-30

**Tethering/Lifting Airplane Recovery Sling Equipment  
Figure 1**