

CHAPTER

12

SERVICING



767

ILLUSTRATED TOOL AND EQUIPMENT MANUAL

CHAPTER 12
SERVICING

Subject/Page	Date	Subject/Page	Date	Subject/Page	Date
EFFECTIVE PAGES		12-20-04 (cont)			
1	Apr 10/2008	2	BLANK		
2	BLANK				
12-CONTENTS					
1	Apr 10/2006				
2	BLANK				
12-00-01					
1	Apr 10/2006				
2	Apr 10/2006				
12-10-01					
1	Apr 10/2006				
2	BLANK				
12-10-02					
1	Apr 10/2006				
2	Apr 10/2006				
12-10-03					
1	Oct 10/2007				
2	Oct 10/2007				
12-10-04					
1	Apr 10/2006				
2	Apr 10/2006				
3	Apr 10/2006				
4	BLANK				
12-10-05					
1	Oct 10/2006				
2	Oct 10/2006				
12-20-01					
1	Apr 10/2006				
2	Apr 10/2006				
12-20-02					
1	Oct 10/2006				
2	Oct 10/2006				
3	Oct 10/2006				
4	BLANK				
12-20-03					
1	Apr 10/2006				
2	BLANK				
12-20-04					
1	Apr 10/2006				

A = Added, R = Revised, O = Overflow, D = Deleted

12-EFFECTIVE PAGES



767

ILLUSTRATED TOOL AND EQUIPMENT MANUAL

TABLE OF CONTENTS

<u>Subject</u>	<u>Title</u>	<u>Part No.</u>
12-	SERVICING	
12-00-01	LADDER - ACCESS DOOR, E/E BAY	A12006-1
12-10-01	ADAPTER - TIRE INFLATION	A12007-11, -20
12-10-02	INFLATION TOOL - STRUT	F70200-14
12-10-03	DRAIN EQUIPMENT - SHOCK STRUT, MLG/NLG	A32066-1
12-10-04	INFLATION TOOL - TIRE	F70199-13, -17, -19, -20
12-10-05	DRAIN HOSE - SUMP VALVE, CENTER AUXILIARY FUEL TANKS	A28008-1, -8
12-20-01	FUEL SAMPLING EQUIPMENT	A12001-1, -14
12-20-02	LUBRICATION ADAPTER - ATTACH FITTING, WING/NACELLE	A12005-1
12-20-03	PLATFORM - ACCESS, MLG WHEEL WELL	A12004-40
12-20-04	LUBRICATION ADAPTER - AFT WHEEL WELL BULKHEAD, SPHERICAL BEARING	A12008-1

12-CONTENTS

Page 1
Apr 10/2006

D634T501



767

ILLUSTRATED TOOL AND EQUIPMENT MANUAL

PART NUMBER: A12006-1

NAME: LADDER - ACCESS DOOR, E/E BAY

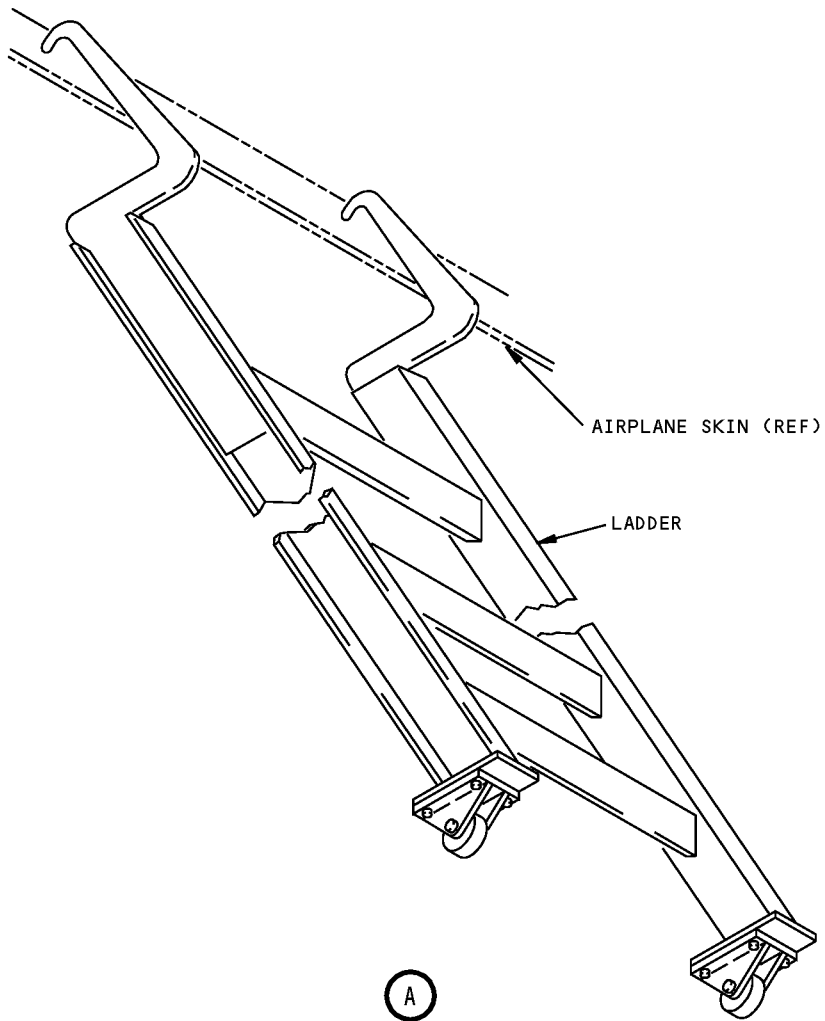
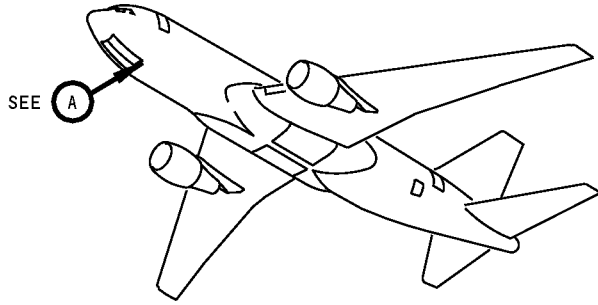
AIRPLANE MAINTENANCE: YES

COMPONENT MAINTENANCE: NO

USAGE & DESCRIPTION: This tool is used as a ladder for the access doorway of the E/E bay.

DIMENSIONS: 3 x 15 x 96 inches (76 x 381 x 2438 mm)

**767
ILLUSTRATED TOOL AND EQUIPMENT MANUAL**



**E/E Bay Access Door Ladder
Figure 1**

ILLUSTRATED TOOL AND EQUIPMENT MANUAL

PART NUMBER: A12007-11, -20

NAME: ADAPTER - TIRE INFLATION

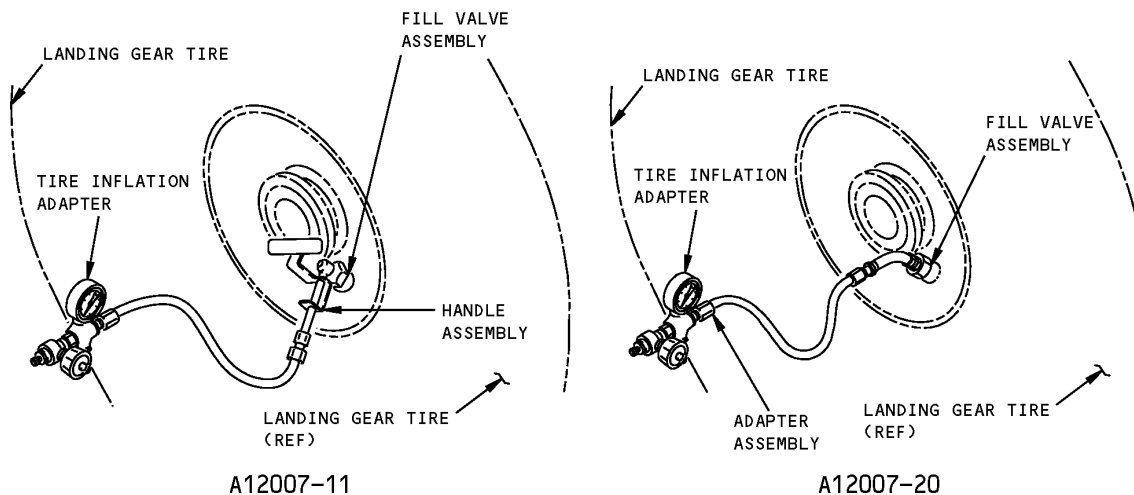
AIRPLANE MAINTENANCE: YES

COMPONENT MAINTENANCE: NO

USAGE & DESCRIPTION: This tool is used to inflate the landing gear tires. The -11 is used on 767-200 and -300 airplanes with or without TPIS (Tire Pressure Indicating System). The -11 is also used on 767-400 Nose Landing Gear with or without TPIS. The -20 is used on 767-200 and -300 airplanes without TPIS. The -20 is also used on 767-400 Nose Landing Gear without TPIS. Refer to AMM 12-15-03 for further usage instructions. The -11 consists of a -12 adapter assembly and a -13 box assembly. The -20 consists of a -21 adapter assembly and a -3 box assembly. Each of -11 and -20 adapter assemblies consists of a cover valve, a hose assembly, a valve needle, a gauge, a relief valve, air check and related tube fittings. The -11 also includes a handle assembly.

DIMENSIONS: 6 x 8 x 21 inches (152 x 203 x 533 mm)

NOTE: A12007-20 supersedes A12007-1.
A12007-11 replaces A12007-20 for future procurement.



**Tire Inflation Adapter
Figure 1**



767

ILLUSTRATED TOOL AND EQUIPMENT MANUAL

PART NUMBER: F70200-14

NAME: INFLATION TOOL - STRUT

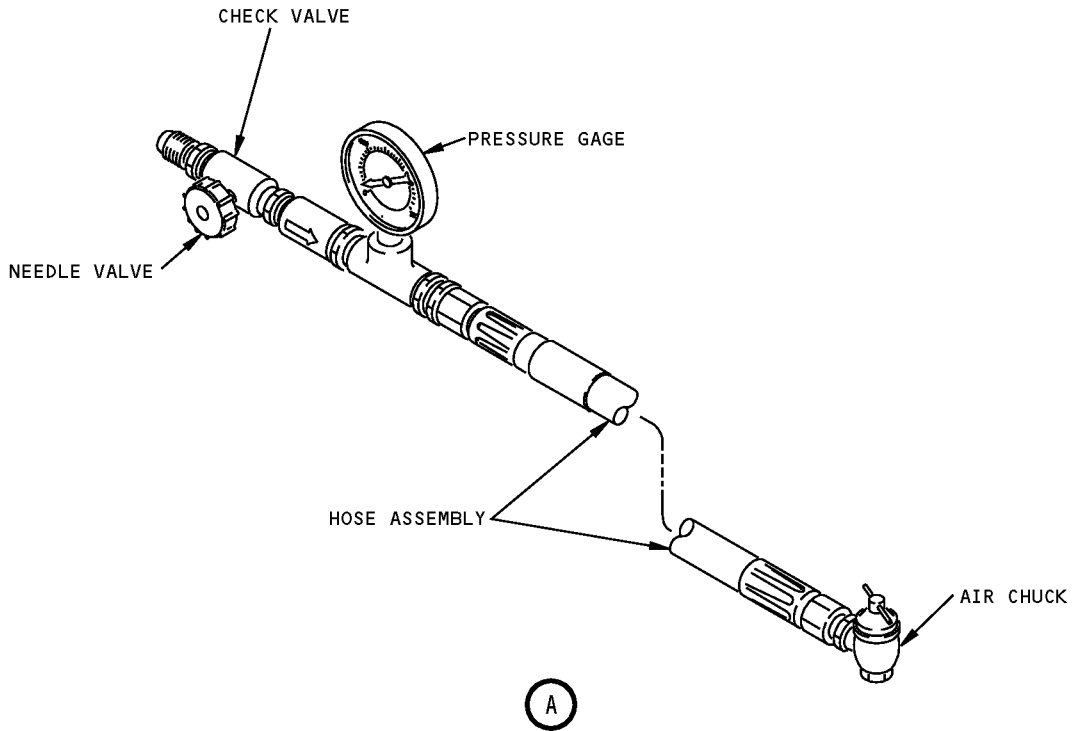
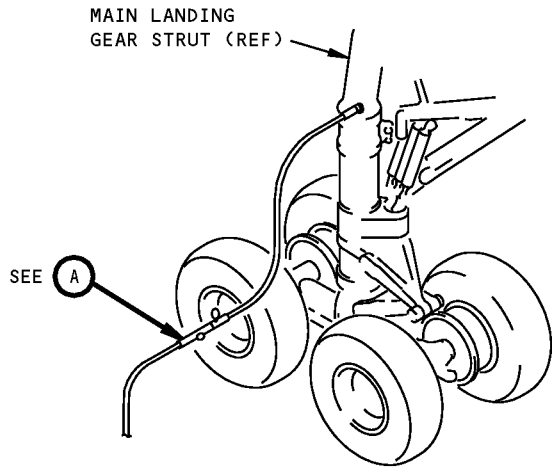
AIRPLANE MAINTENANCE: YES

COMPONENT MAINTENANCE: YES

USAGE & DESCRIPTION: This tool is used to inflate the landing gear struts. The tool consists of a needle valve, a pressure gage, an air chuck, a hose assembly, a check valve and related tube fittings.

DIMENSIONS: 2 x 12 x 18 inches (51 x 305 x 457 mm)

ILLUSTRATED TOOL AND EQUIPMENT MANUAL



**Strut Inflation Tool
Figure 1**

ILLUSTRATED TOOL AND EQUIPMENT MANUAL

PART NUMBER: A32066-1

NAME: DRAIN EQUIPMENT - SHOCK STRUT, MLG/NLG

AIRPLANE MAINTENANCE: YES

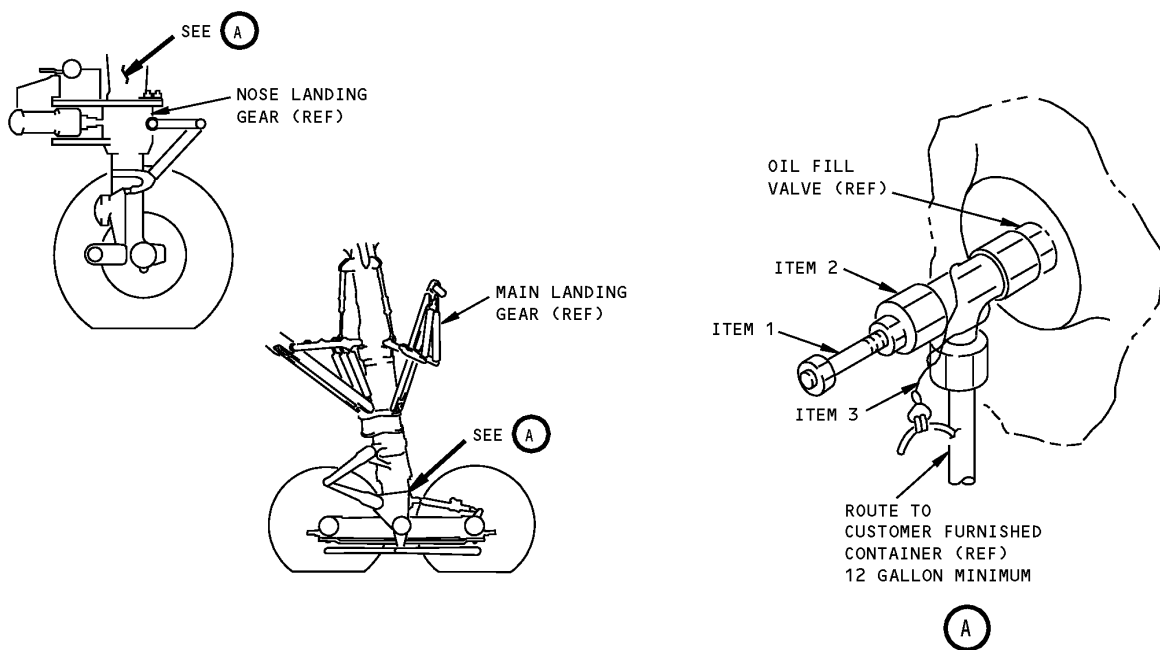
COMPONENT MAINTENANCE: YES

USAGE & DESCRIPTION: The A32066-1 is used to hold the oil fill valve open in order to drain oil from the main or nose landing gear. This tool is used only on a completely depressurized gear. Refer to AMM 12-15-00 for complete usage instructions. The A32066-1 consists of a T-shaped drain valve, an adjusting rod and tubing. The tool inserts into the oil fill valve to drain the oil from the main or nose landing gear.

WEIGHT: 1 lb (0.5 kg)

DIMENSIONS: 3.5 x 3.5 x 4 inches (89 x 89 x 102 mm)

NOTE: J32060-1 replaces A32066-1 for future procurement.



**Main and Nose Landing Gear Shock Strut Drain Equipment
Figure 1**



767

ILLUSTRATED TOOL AND EQUIPMENT MANUAL

REPAIRABLE/REPLACEABLE PARTS			
ITEM NO.	PART NO.	NOMENCLATURE	VENDOR CODE
1	-2	ROD	
2	-3	CAP	V45681
3	CL-41-KA-8.0	LANYARD	V99862



767

ILLUSTRATED TOOL AND EQUIPMENT MANUAL

PART NUMBER: F70199-13, -17, -19, -20

NAME: INFLATION TOOL - TIRE

AIRPLANE MAINTENANCE: YES

COMPONENT MAINTENANCE: NO

USAGE & DESCRIPTION: This tool is used to inflate the main landing gear tires to a specified pressure. This tool is used on 767-400 airplanes. The -13 and -19 are used for the large valve T and RA core C-2 (0.482-26 THD). The -17 and -20 are used for a small valve T and RA core C-4 (0.302-32 THD). Refer to AMM 12-15-03 for further usage instructions. This tool consists of the following:

F70199-13		
QUANTITY	NOMENCLATURE	PART NUMBER
1	PRESSURE GAUGE	F70199-2
1	NEEDLE VALVE	F70199-16
1	HOSE ASSEMBLY	F70199-5
1	AIR CHUCK	F70199-12 ^{*[1]}
1	AIR CHUCK	4660A ^{*[1]}
1	RELIEF VALVE ^{*[2]}	559B-2M-255 ^{*[3]}
1	RELIEF VALVE ^{*[2]}	532B-2M-255 ^{*[3]}

^{*[1]} 4660A AIR CHUCK IS OPTIONAL TO F70199-12.

^{*[2]} THE NORMAL SETTING IS 255 PSI. IF REQUIRED, ADJUST VALVE TO RELIEVE AT 235-275 PSI. VALVE MUST RESEAL AT NO LESS THAN 210 PSI.

^{*[3]} 532B-2M-255 RELIEF VALVE IS OPTIONAL TO 559B-2M-255.

F70199-17		
QUANTITY	NOMENCLATURE	PART NUMBER
1	PRESSURE GAUGE	F70199-2
1	NEEDLE VALVE	F70199-16
1	HOSE ASSEMBLY	F70199-5
1	AIR CHUCK	F70199-6
1	RELIEF VALVE ^{*[1]}	559B-2M-255 ^{*[2]}
1	RELIEF VALVE ^{*[1]}	532B-2M-255 ^{*[2]}

^{*[1]} THE NORMAL SETTING IS 255 PSI. IF REQUIRED, ADJUST VALVE TO RELIEVE AT 235-275 PSI. VALVE MUST RESEAL AT NO LESS THAN 210 PSI.

^{*[2]} 532B-2M-255 RELIEF VALVE IS OPTIONAL TO 559B-2M-255.



767

ILLUSTRATED TOOL AND EQUIPMENT MANUAL

F70199-19		
QUANTITY	NOMENCLATURE	PART NUMBER
1	PRESSURE GAUGE	F70199-2
1	NEEDLE VALVE	F70199-16
1	HOSE ASSEMBLY	F70199-5
1	AIR CHUCK	F70199-12 ^{*[1]}
1	AIR CHUCK	4660A ^{*[1]}
1	RELIEF VALVE ^{*[2]}	559B-2M-270 ^{*[3]}
1	RELIEF VALVE ^{*[2]}	532B-2M-270 ^{*[3]}

*[1] 4660A AIR CHUCK IS OPTIONAL TO F70199-12.

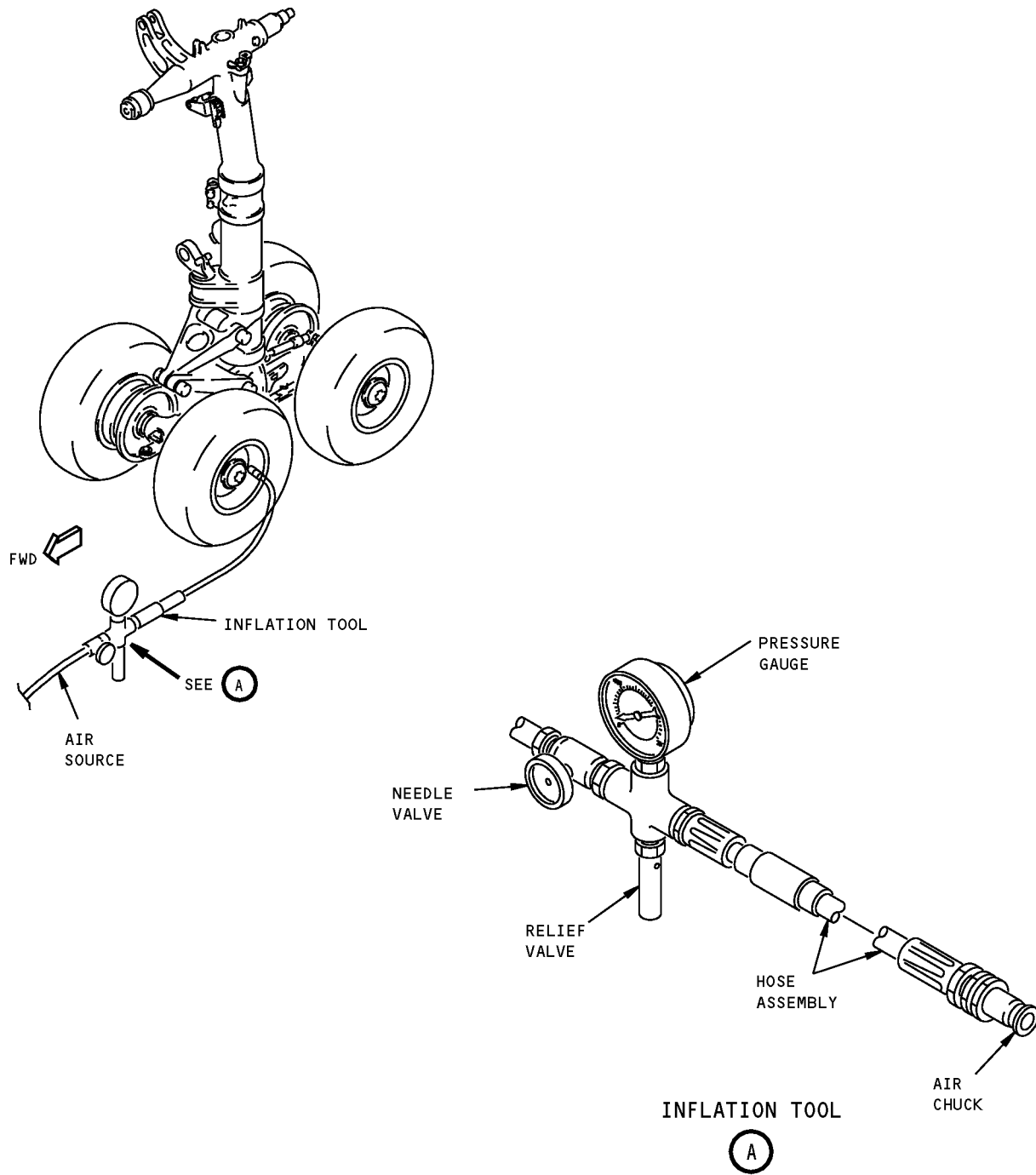
*[2] THE NORMAL SETTING IS 270 PSI. IF REQUIRED, ADJUST VALVE TO RELIEVE AT 250-290 PSI. VALVE MUST RESEAL AT NO LESS THAN 220 PSI.

*[3] 532B-2M-270 IS OPTIONAL TO 559B-2M-270.

F70199-20		
QUANTITY	NOMENCLATURE	PART NUMBER
1	PRESSURE GAUGE	F70199-2
1	NEEDLE VALVE	F70199-16
1	HOSE ASSEMBLY	F70199-5
1	AIR CHUCK	F70199-6
1	RELIEF VALVE ^{*[1]}	559B-2M-270 ^{*[2]}
1	RELIEF VALVE ^{*[1]}	532B-2M-270 ^{*[2]}

*[1] THE NORMAL SETTING IS 270 PSI. IF REQUIRED, ADJUST VALVE TO RELIEVE AT 250-290 PSI. VALVE MUST RESEAL AT NO LESS THAN 220 PSI.

*[2] 532B-2M-270 IS OPTIONAL TO 559B-2M-270.



**Tire Inflation Tool
Figure 1**

ILLUSTRATED TOOL AND EQUIPMENT MANUAL

PART NUMBER: A28008-1, -8

NAME: DRAIN HOSE - SUMP VALVE, CENTER AUXILIARY FUEL TANKS

AIRPLANE MAINTENANCE: YES

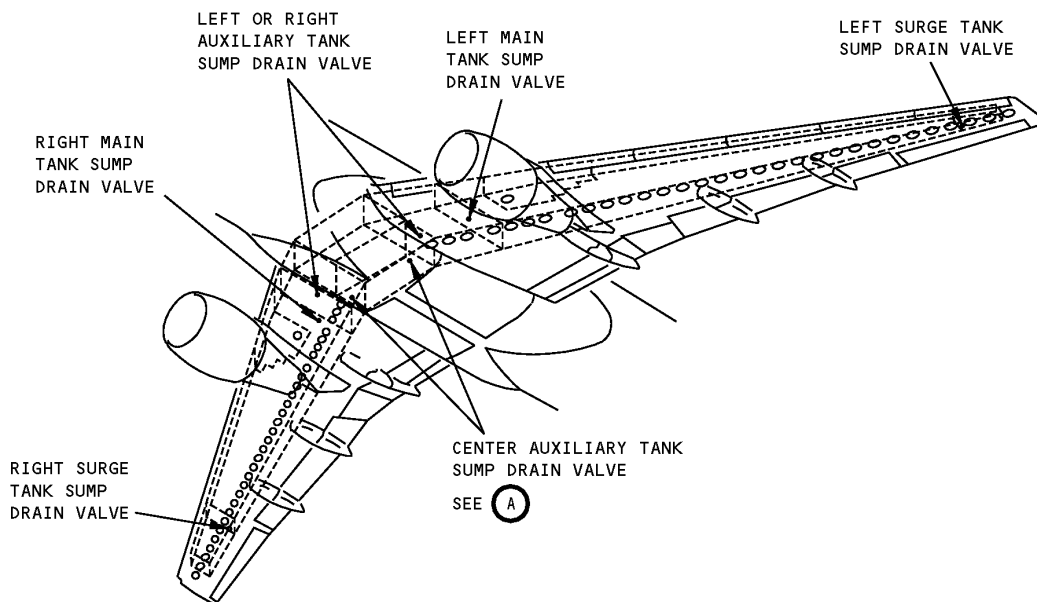
COMPONENT MAINTENANCE: NO

USAGE & DESCRIPTION: A28008-1 or -8 is used on 767-200ER,-300ER,-300F,-400ER airplanes. A28008-1 is used to drain the left and right sumps of the center auxiliary fuel tank. Refer to AMM 12-11-03 and current A28008 drawing for additional usage instructions. A28008-1 consists of a -2 hose assembly contained in a storage box. A28008-8 consists of a -9 hose assembly contained in a storage box. The difference between the -9 hose assembly and the -2 hose assembly is the -9 hose assembly does not have the quick disconnect (5600-8-10S) and nipple (1/2 x 1/2 FF-S) of the -2 drain hose. The -8 drain hose is a non-detachable assembly.

WEIGHT: A28008-1 - 3 lbs (1.4 kg)
A28008-8 - 2 lbs (1 kg)

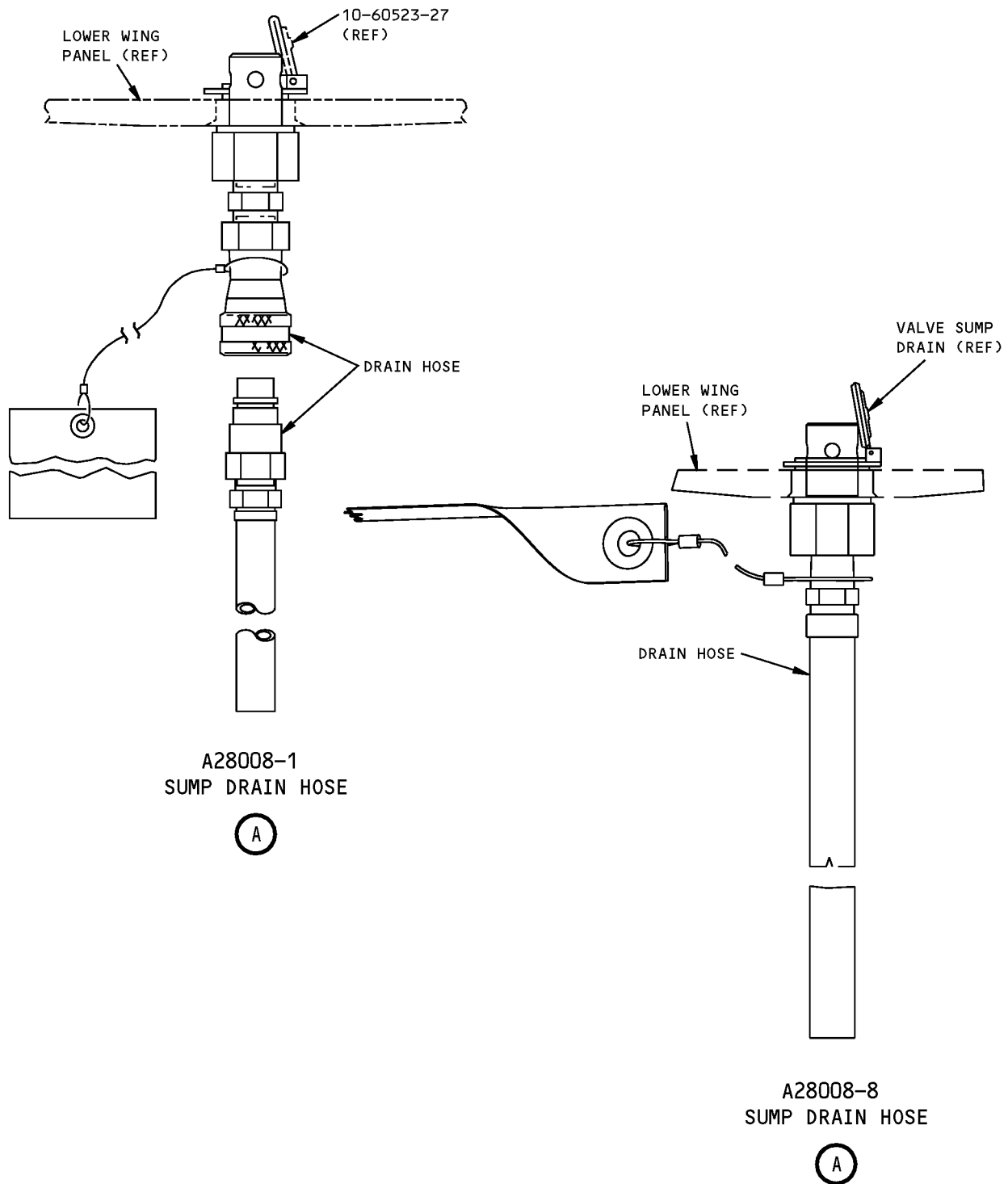
DIMENSIONS: 2 x 6 x 18 inches (51 x 152 x 457 mm)

NOTE: A28008-8 replaces A28008-1 for future procurement.



**Center Auxiliary Fuel Tank Sump Valve Location
Figure 1**

ILLUSTRATED TOOL AND EQUIPMENT MANUAL



**Center Auxiliary Fuel Tank Sump Valve Drain Hose
Figure 2**

ILLUSTRATED TOOL AND EQUIPMENT MANUAL

PART NUMBER: A12001-1, -14

NAME: FUEL SAMPLING EQUIPMENT

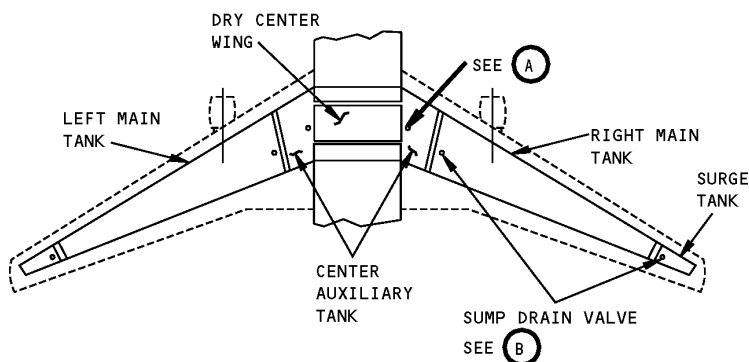
AIRPLANE MAINTENANCE: YES

COMPONENT MAINTENANCE: NO

USAGE & DESCRIPTION: This tool is used to check the center auxiliary and main fuel tanks and the surge tank sumps for impurities. The probe assembly inserts into the valve and releases the fuel sample into the beaker assembly.

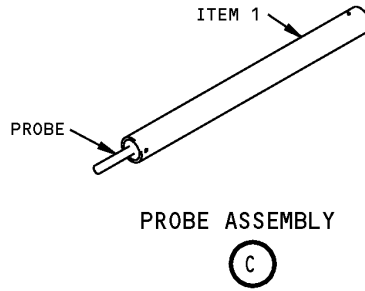
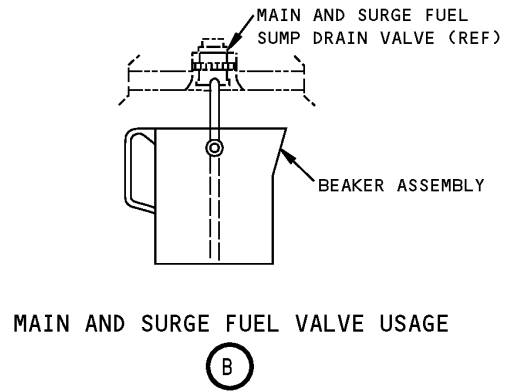
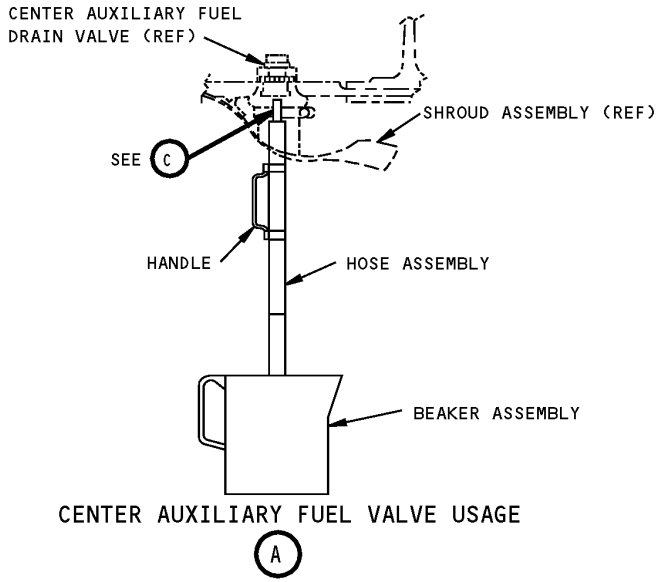
DIMENSIONS: 8 x 8 x 25 inches (203 x 203 x 635 mm)

NOTE: A12001-14 replaces A12001-1 for future procurement.



**Center Auxiliary and Main Fuel Tanks Location
Figure 1**

ILLUSTRATED TOOL AND EQUIPMENT MANUAL



Fuel Sampling Equipment
Figure 2

REPAIRABLE/REPLACEABLE PARTS			
ITEM NO.	PART NO.	NOMENCLATURE	VENDOR CODE
1	-7	TUBE	



767

ILLUSTRATED TOOL AND EQUIPMENT MANUAL

PART NUMBER: A12005-1

NAME: LUBRICATION ADAPTER - ATTACH FITTING, WING/NACELLE

AIRPLANE MAINTENANCE: YES

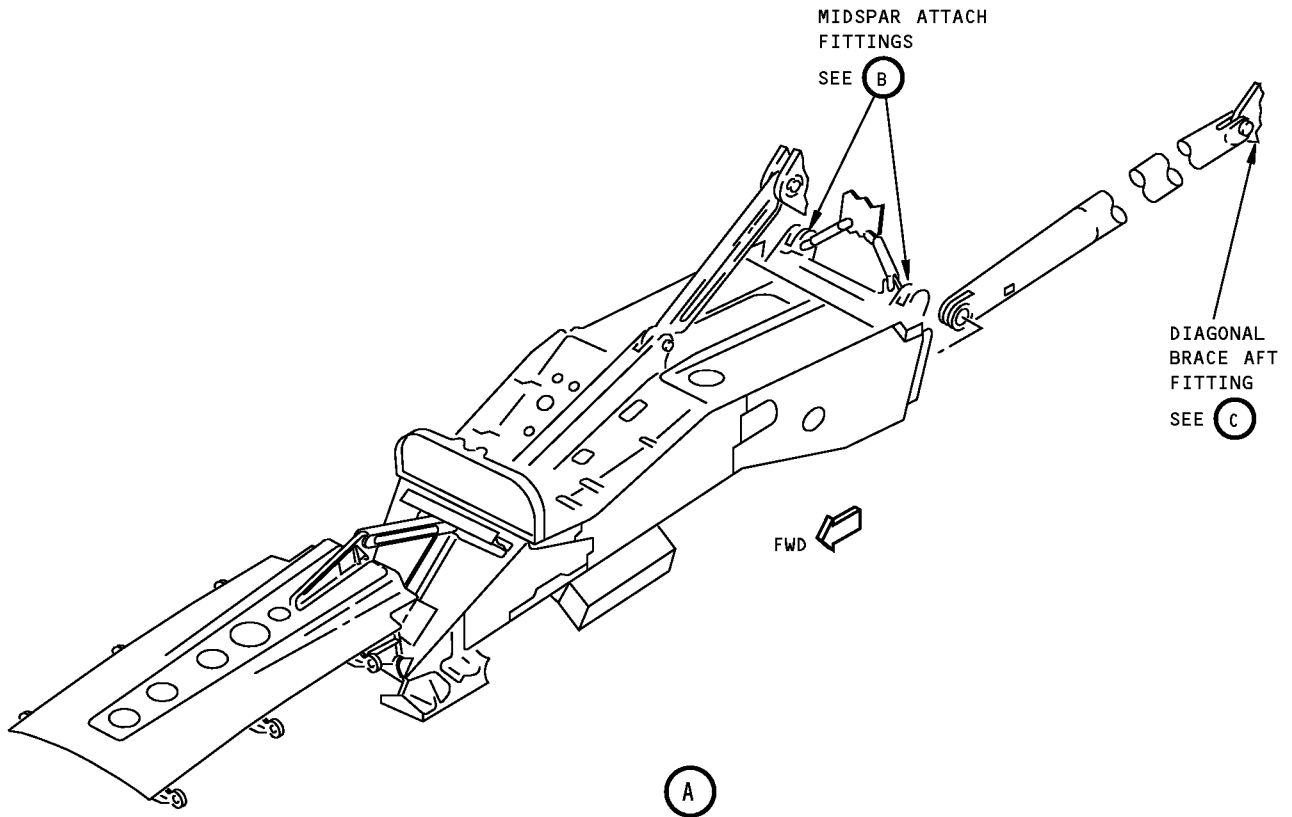
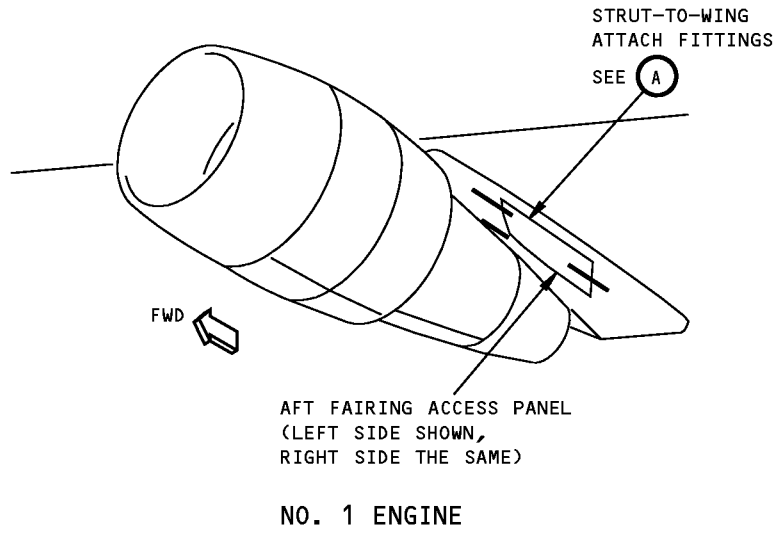
COMPONENT MAINTENANCE: NO

USAGE & DESCRIPTION: The A12005-1 lubrication adapter is used on all 767 airplanes. The adapter is used to lubricate attach fittings on the wing nacelles. The tool is attached to the end of a grease gun flex hose. Refer to AMM 12-21-32 and current A12005 drawing for further usage information. The A12005-1 consists of an A12005-2 adapter assembly and a storage box.

WEIGHT: 1 lb (.45 kg)

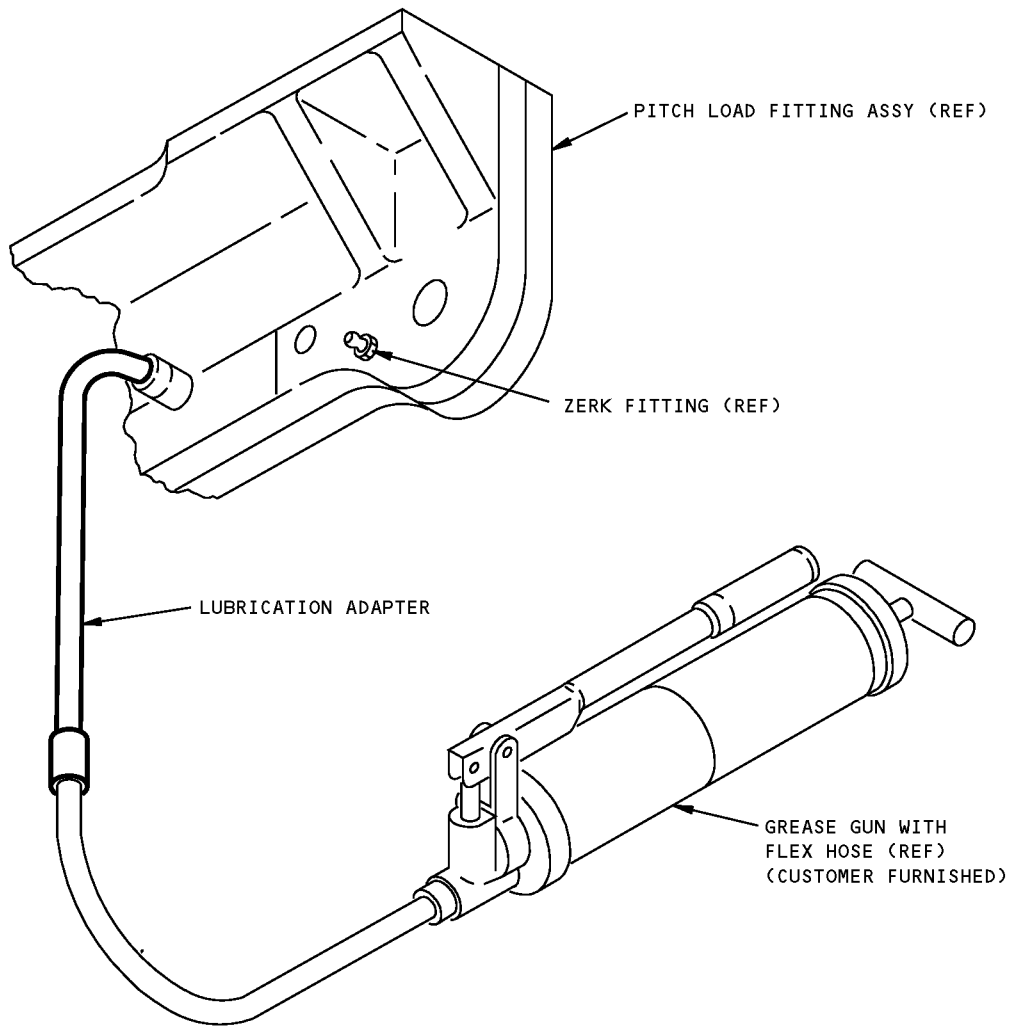
DIMENSIONS: 14 x 5 x 1 inches (356 x 127 x 25 mm)

ILLUSTRATED TOOL AND EQUIPMENT MANUAL



**Wing/Nacelle Attach Fitting Lubrication Adapter Usage Location
Figure 1**

**767
ILLUSTRATED TOOL AND EQUIPMENT MANUAL**



**Wing/Nacelle Attach Fitting Lubrication Adapter
Figure 2**

ILLUSTRATED TOOL AND EQUIPMENT MANUAL

PART NUMBER: A12004-40

NAME: PLATFORM - ACCESS, MLG WHEEL WELL

AIRPLANE MAINTENANCE: YES

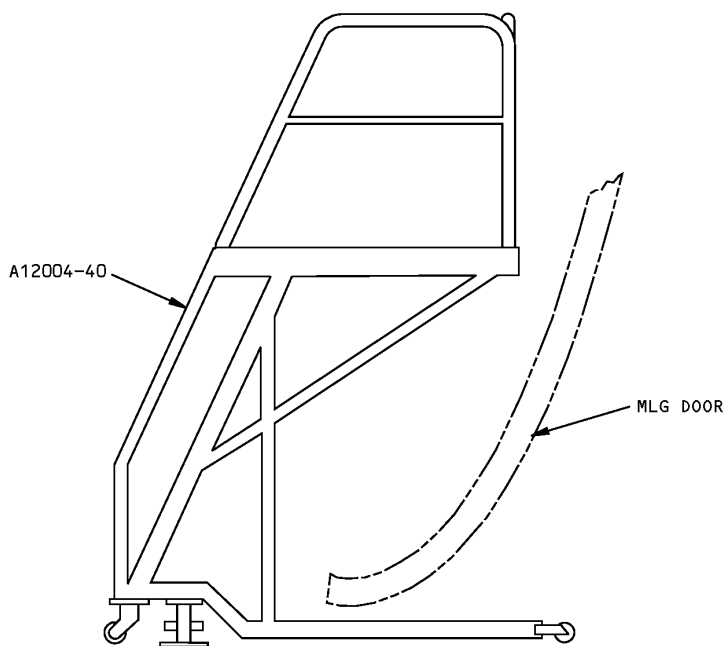
COMPONENT MAINTENANCE: NO

USAGE & DESCRIPTION: This tool is used to gain access to equipment in the MLG wheel well.

WEIGHT: 850 lbs (386 kg)

DIMENSIONS: 39 x 78 x 124 inches (991 x 1981 x 3150 mm)

NOTE: A12004-40 supersedes A12004-1



MLG Wheel Well Access Platform
Figure 1

ILLUSTRATED TOOL AND EQUIPMENT MANUAL

PART NUMBER: A12008-1

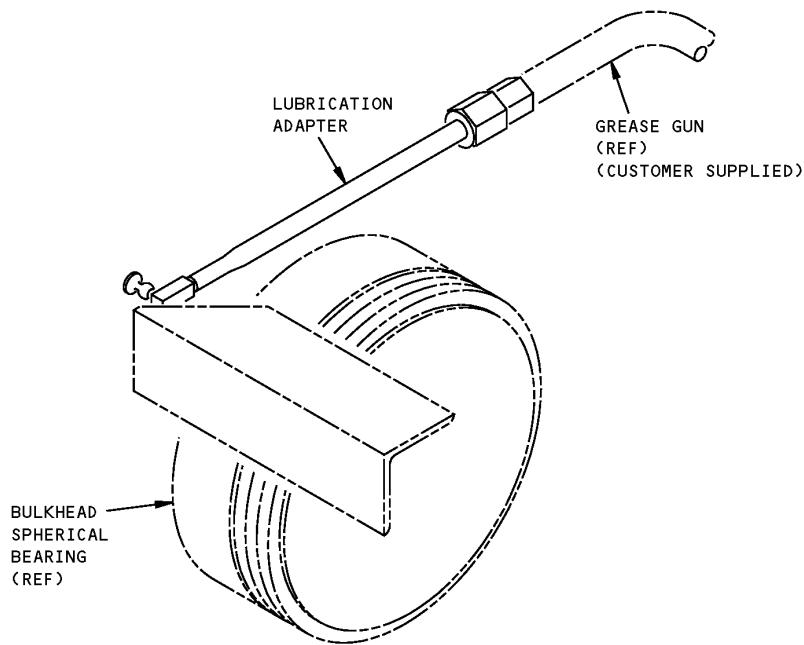
NAME: LUBRICATION ADAPTER - AFT WHEEL WELL BULKHEAD, SPHERICAL BEARING

AIRPLANE MAINTENANCE: YES

COMPONENT MAINTENANCE: NO

USAGE & DESCRIPTION: This tool is used for lubrication of the spherical bearing from the top of the wing with fairing panel removed. Refer to AMM 12-21-17 for complete usage instruction. This tool consists of a lubrication assembly and a storage box assembly.

DIMENSIONS: 1 x 1 x 8 inches (25 x 25 x 203 mm)



**Spherical Bearing Lubrication Adapter - Aft Wheel Well Bulkhead
Figure 1**