

CHAPTER

26

FIRE PROTECTION



767
ILLUSTRATED TOOL AND EQUIPMENT MANUAL

CHAPTER 26
FIRE PROTECTION

Subject/Page	Date	Subject/Page	Date	Subject/Page	Date
EFFECTIVE PAGES		26-20-05			
1	Oct 10/2008	1	Apr 10/2006		
2	BLANK	2	Apr 10/2006		
26-CONTENTS		26-20-06			
1	Oct 10/2007	1	Oct 10/2006		
2	BLANK	2	Apr 10/2006		
26-10-01		26-20-07			
1	Apr 10/2006	1	Oct 10/2006		
2	Apr 10/2006	2	Oct 10/2006		
26-10-02					
1	Apr 10/2008				
2	Oct 10/2006				
3	Oct 10/2006				
4	BLANK				
26-10-03					
1	Apr 10/2006				
2	Apr 10/2006				
26-20-01					
1	Oct 10/2007				
2	Apr 10/2006				
3	Apr 10/2006				
4	Apr 10/2006				
5	Apr 10/2006				
6	Apr 10/2006				
7	Apr 10/2006				
8	BLANK				
26-20-02					
1	Oct 10/2007				
2	Apr 10/2006				
3	Oct 10/2006				
4	BLANK				
26-20-03					
1	Oct 10/2007				
2	Oct 10/2006				
3	Oct 10/2006				
4	Oct 10/2006				
26-20-04					
1	Oct 10/2007				
2	Apr 10/2006				

A = Added, R = Revised, O = Overflow, D = Deleted

26-EFFECTIVE PAGES



767

ILLUSTRATED TOOL AND EQUIPMENT MANUAL

TABLE OF CONTENTS

<u>Subject</u>	<u>Title</u>	<u>Part No.</u>
26-	FIRE PROTECTION	
26-10-01	EXTENDER CARD - ELECTRONIC CARD FILE	G26004-39, -40
26-10-02	ADAPTER - HOT WIRE ANEMOMETER	G26005-13, -17, -24, -9
26-10-03	TEST BOX-CARGO SMOKE HEATER, TEST PLUG	J26007-1
26-20-01	ELECTRICAL TEST EQUIPMENT - BOTTLE SQUIB, FIRE EXTINGUISHER SYSTEM	A26001-165, -174, -187
26-20-02	TEST BOX - TIME DELAY, CARGO FIRE EXTINGUISHER BOTTLE	A26002-36, -54
26-20-03	TEST EQUIPMENT - REGULATOR, CARGO FIRE EXTINGUISHING	A26003-10, -7
26-20-04	PLUG EQUIPMENT - DISCHARGE NOZZLE, CARGO COMPARTMENT FIRE EXTINGUISHER	A26004-1
26-20-05	PLATFORM - MAINTENANCE, CARGO SIDEWALL	A26005-1
26-20-06	TEST EQUIPMENT - FIRE EXTINGUISHER TUBING, CARGO COMPARTMENT	J26005-24, -32
26-20-07	TEST EQUIPMENT - FIRE EXTINGUISHING TUBING, CARGO COMPARTMENT	J26009-1

26-CONTENTS

Page 1
Oct 10/2007

D634T501

ILLUSTRATED TOOL AND EQUIPMENT MANUAL

PART NUMBER: G26004-39, -40

NAME: EXTENDER CARD - ELECTRONIC CARD FILE

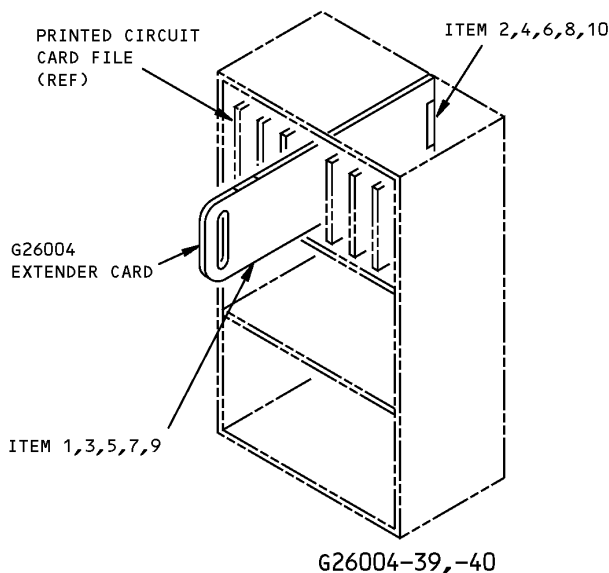
AIRPLANE MAINTENANCE: YES

COMPONENT MAINTENANCE: NO

USAGE & DESCRIPTION: This tool is used to monitor and troubleshoot electronic card file by providing pin access to connectors. The -39 tool consists of a -41 extender card assembly and a -43 storage box assembly. The -39 is for use with 41 pin connector. The -40 tool consists of a -42 extender card assembly and a -44 storage box assembly. The -40 is for use with 66 pin connector.

DIMENSIONS: 6 x 19 inches (152 x 483 mm)

NOTE: G26004-40 supersedes G26004-23.
G26004-39 supersedes G26004-1, -10.



**Electronic Card File - Extender Card
Figure 1**

REPAIRABLE/REPLACEABLE PARTS			
ITEM NO.	PART NO.	NOMENCLATURE	VENDOR CODE
1	141-150-2	TERMINAL	V26742
2	BACC65K41	CONNECTOR P1 (OPT TO 191-341-0001)	



767

ILLUSTRATED TOOL AND EQUIPMENT MANUAL

REPAIRABLE/REPLACEABLE PARTS			
ITEM NO.	PART NO.	NOMENCLATURE	VENDOR CODE
3	BACC65L41	CONNECTOR J1 (OPT TO 192-341-0001)	
4	BACC65K66	CONNECTOR P1 (OPT TO 192-366-0005)	
5	BACC65L66	CONNECTOR J1 (OPT TO 192-366-0004)	
6	191-341-0001	CONNECTOR P1 (OPT TO BACC65K41)	V26742
7	192-341-0001	CONNECTOR J1 (OPT TO BACC65L41)	V26742
8	191-366-0005	CONNECTOR P1 (OPT TO BACC65K66)	V26742
9	192-366-0004	CONNECTOR J1 (OPT TO BACC65L66)	V26742
10	11PF106/160	PIN COVER	V50541



767

ILLUSTRATED TOOL AND EQUIPMENT MANUAL

PART NUMBER: G26005-9, -13, -17, -24

NAME: ADAPTER - HOT WIRE ANEMOMETER

AIRPLANE MAINTENANCE: YES

COMPONENT MAINTENANCE: NO

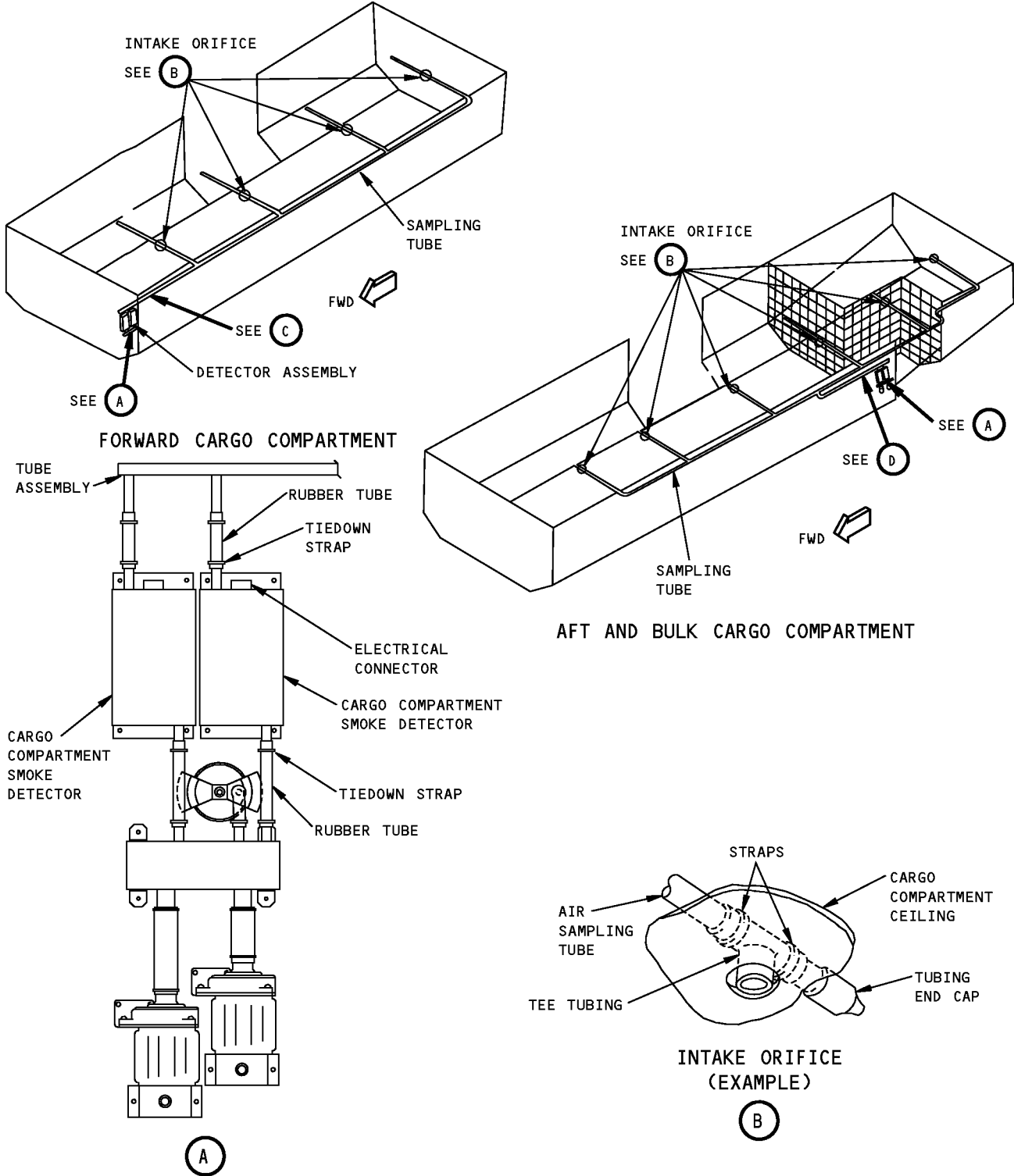
USAGE & DESCRIPTION: The G26005-9, -13, -17, or -24 is used on all 767 airplanes except the 767-200SF & -300BCF. This tool is used to adapt the cargo compartment smoke detector orifices to the hot wire probe of TSI models 1650, 8345, 8346, 8350, 8352, 8355, 8357, 9515, 9535 and 9535-A anemometers to measure the air samples. The -9 tool is used with TSI model 1650 anemometer. The -13 and -17 tools are used with TSI models 8345, 8346, 8350, 8352, 8355 and 8357 anemometers. The -24 tool is used with TSI models 9515, 9535 and 9535-A anemometers. For usage instructions see AMM 26-16-00 and current G26005 drawing.

WEIGHT: .5 lb (.23 kg) each end item

DIMENSIONS:
G26005-24 - 3 x 2 x 6 inches (71 x 54 x 158 mm)
G26005-17 - 3 x 2 x 6 inches (71 x 54 x 158 mm)
G26005-13 - 2 x 2 x 6 inches (54 x 54 x 158 mm)
G26005-9 - 2 x 2 x 6 inches (54 x 54 x 158 mm)

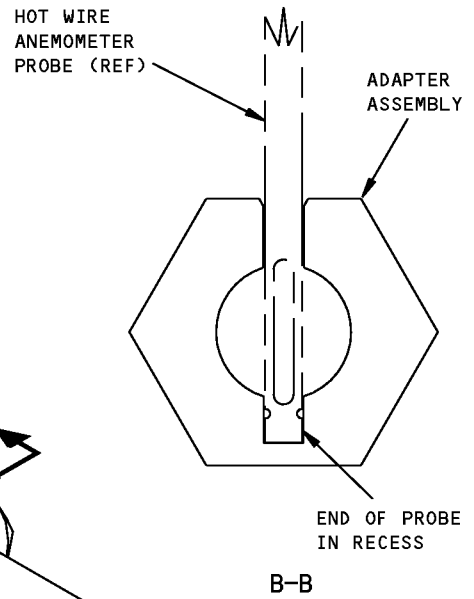
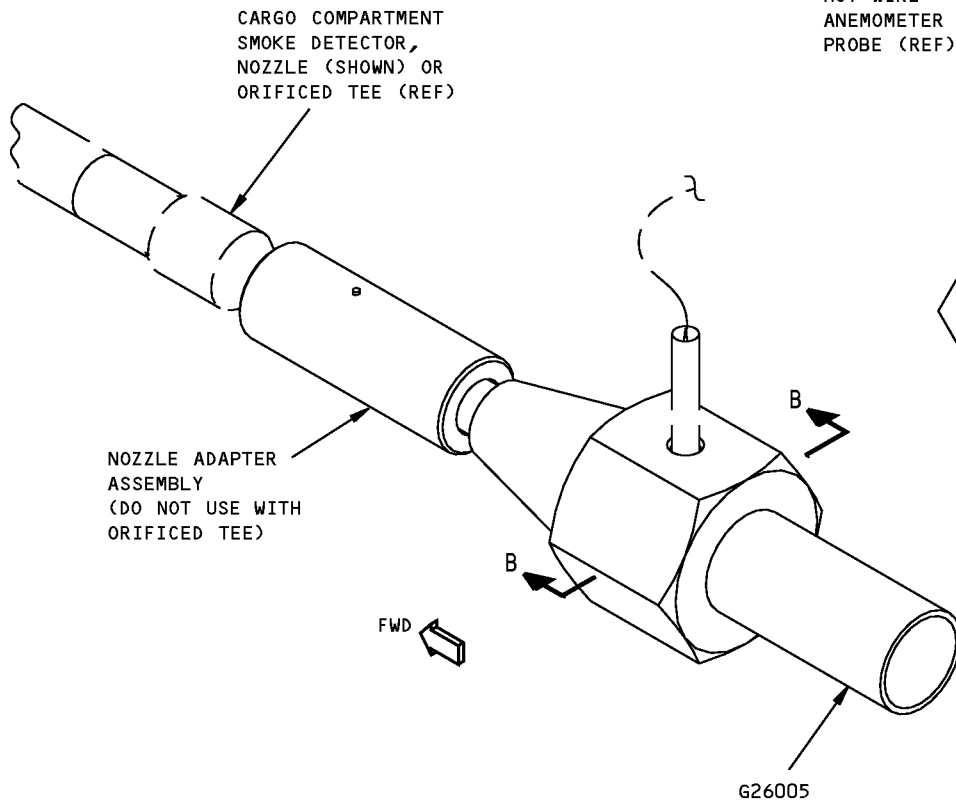
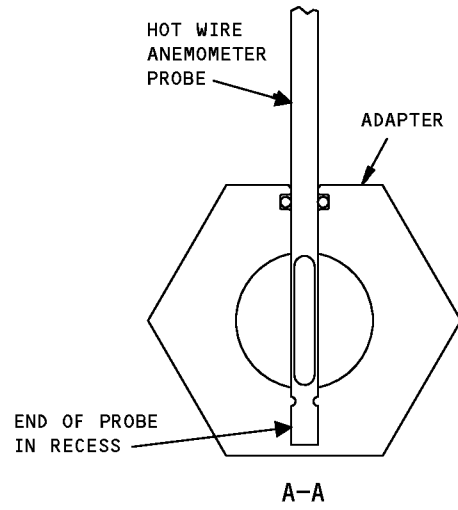
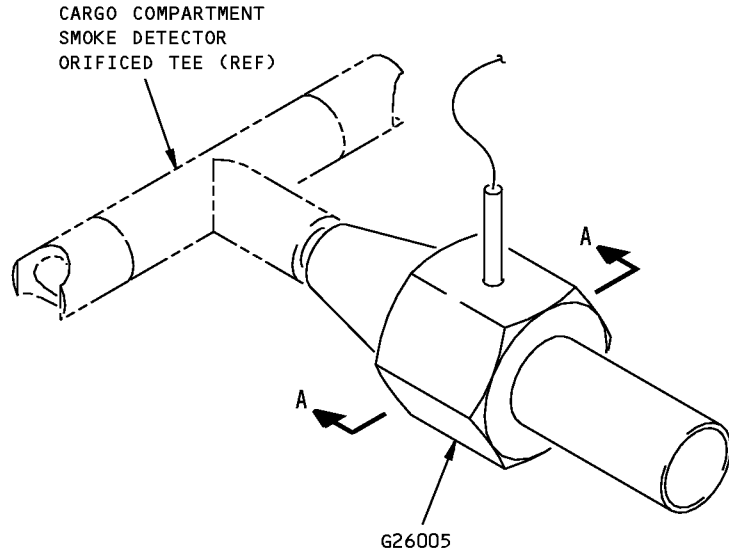
NOTE: G26005-24 replaces G26005-9, -13 and -17 for future procurement.
G26005-17 replaces G26005-13 for future procurement.
G26005-9 supersedes G26005-1.

ILLUSTRATED TOOL AND EQUIPMENT MANUAL



Lower Cargo Compartment Smoke Detection System - Orifice Locations
Figure 1

ILLUSTRATED TOOL AND EQUIPMENT MANUAL



**Hot Wire Anemometer Adapter
Figure 2**



767

ILLUSTRATED TOOL AND EQUIPMENT MANUAL

PART NUMBER: J26007-1

NAME: TEST BOX-CARGO SMOKE HEATER, TEST PLUG

AIRPLANE MAINTENANCE: YES

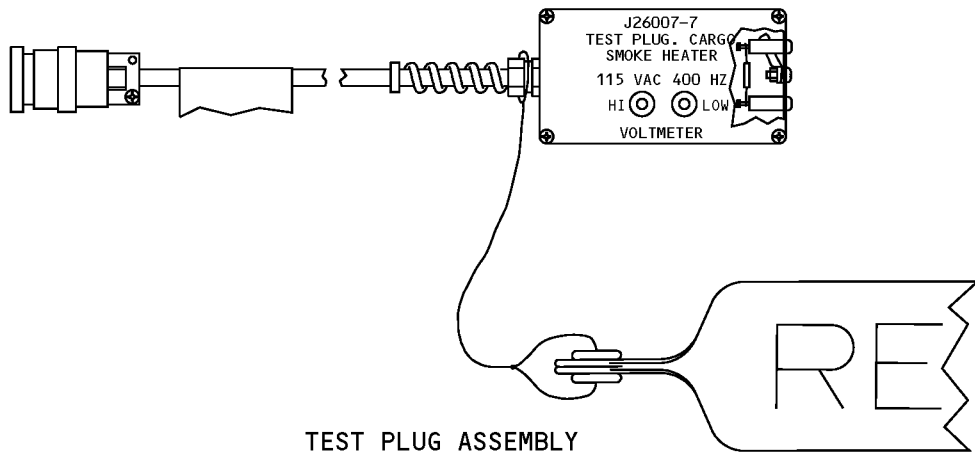
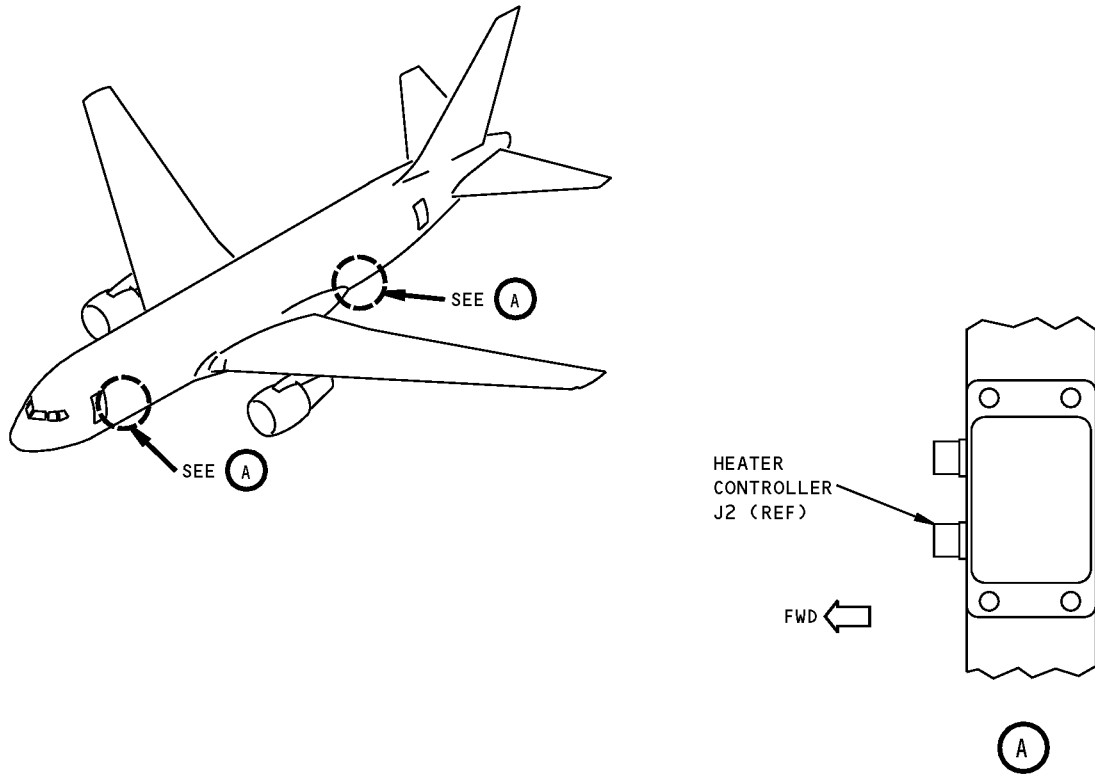
COMPONENT MAINTENANCE: NO

USAGE & DESCRIPTION: This tool is used in the 767 general market freighter to simulate heater sensor circuit and measure voltage output of the cargo smoke detection system heater controllers. Refer to AMM 26-16-03 for further usage information. It consists of a test plug assembly and a storage box assembly.

WEIGHT: 2 lbs (0.9 kg)

DIMENSIONS: 2.5 x 8 x 8 inches (64 x 203 x 203 mm)

ILLUSTRATED TOOL AND EQUIPMENT MANUAL



**Cargo Smoke Heater Test Plug Test Box
Figure 1**



767

ILLUSTRATED TOOL AND EQUIPMENT MANUAL

PART NUMBER: A26001-165, -174, -187

NAME: ELECTRICAL TEST EQUIPMENT - BOTTLE SQUIB, FIRE EXTINGUISHER SYSTEM

AIRPLANE MAINTENANCE: YES

COMPONENT MAINTENANCE: NO

USAGE & DESCRIPTION: This tool is used to simulate the fire extinguisher bottle squib for voltage measurement during engine, APU, and cargo compartment fire extinguishing systems tests. This tool is not applicable to the 767-200SF and 767-300BCF cargo compartments. Use only those adapter cables which satisfy the specific carrier requirements. The adapter cable will vary with the specific fire extinguisher bottle in use. See table for equipment application. Refer to AMM 26-21-00, AMM 26-21-01, AMM 26-22-00, AMM 26-22-01, AMM 26-23-00 and AMM 26-23-01 for further usage instructions.

A26001-165 USAGE TABLE				
FIRE EXTINGUISHING SYSTEM	FIRE EXTINGUISHING BOTTLE	ADAPTER CABLE A26001-	AIRPLANE EQUIPMENT NO.	AMM CHAPTER
ENGINES	S332T011-1	-3 or -132	B17 B18	26-21-00
	S332T011-4,-13	-5,-136		
	S332T011-18	-132,-138		
	S332T011-21	-24,-139		
	S332T011-22,-24	-4,-131		
	S332T011-3, -6, -12, -14	-4,-135		
	S332T011-7	-24 or -137		
	S332T011-23	-144, -145		
APU	S332T011-2	-3 or -132	B25 OR B25 B138	26-22-00
	S332T011-7	-24 or -137		
	S332T011-3,-6,-12,-14	-4, -135		
	S332T011-22,-24	-131		
	S332T011-21	-139		
CARGO COMPARTMENT	S453T201-2, -5, -6, -7, -9, -10, -12, -13, -14, -15, -16, -17, -18 -19, -20	-148	B19 B20 OR B19 B20 B231	26-23-00
	S453T201-28, -33, -34, -35, -36, -37, -38	-148 (AFT) -134 (FWD)		



767

ILLUSTRATED TOOL AND EQUIPMENT MANUAL

A26001-174 USAGE TABLE				
FIRE EXTINGUISHING SYSTEM	FIRE EXTINGUISHING BOTTLE	ADAPTER CABLE A26001-	AIRPLANE EQUIPMENT NO.	AMM CHAPTER
ENGINES	S332T011-1	-3 OR -132	B17 B18	26-21-00
	S332T011-4,-13	-5,-136		
	S332T011-18	-132,-138		
	S332T011-21	-24,-139		
	S332T011-22,-24	-4,-131		
	S332T011-3, -6, -12, -14	-4,-135		
	S332T011-7	-24 or -137		
	S332T011-23	-144,-145		
	KIDDE 897465 (RB211 ENGINES)	-175,-176	LEFT AND RIGHT ENGINE BOTTLE NO. 1, 2	
APU	S332T011-2	-3 OR -132	B25 OR B25 B138	26-22-00
	S332T011-7	-24 or -137		
	S332T011-3,-6,-12,-14	-4,-135		
	S332T011-22,-24	-131		
	S332T011-21	-139		
CARGO COMPARTMENT	S453T201-2, -5, -6, -7, -9, -10, -12, -13, -14, -15, -16, -17, -18 -19, -20	-148	B19 B20 OR B19 B20 B231	26-23-00



767

ILLUSTRATED TOOL AND EQUIPMENT MANUAL

A26001-187 USAGE TABLE				
FIRE EXTINGUISHING SYSTEM	FIRE EXTINGUISHING BOTTLE ^{*[1]}	ADAPTER CABLE A26001-	AIRPLANE EQUIPMENT NO.	AMM CHAPTER
ENGINES	S332T011-1	-3 or -132	B17 B18	26-21-00
	S332T011-4,-13	-144 and -136 or -5		
	S332T011-18	-138 and -132 or -3		
	S332T011-21	-139 and -137 or -24		
	S332T011-22,-24	-131 and -135 or -4		
	S332T011-3, -6, -12, -14	-4 or -135		
	S332T011-7	-24 or -137		
	S332T011-23	-5 and -144 or -136 and -145		
	KIDDE 897465 (RB211 ENGINES)	-175 or -176	^{*[2]} LEFT AND RIGHT ENGINE BOTTLE NO. 1 & 2	
APU	S332T011-2	-3 or -132	B25 OR B25 B138	26-22-00
	S332T011-7	-24 or -137		
	S332T011-3,-6,-12,-14	-4 or -135		
	S332T011-22,-24	-131 and -135 or -4		
	S332T011-21	-139 and -137 or -24		



767

ILLUSTRATED TOOL AND EQUIPMENT MANUAL

A26001-187 USAGE TABLE				
FIRE EXTINGUISHING SYSTEM	FIRE EXTINGUISHING BOTTLE ^{*[1]}	ADAPTER CABLE A26001-	AIRPLANE EQUIPMENT NO.	AMM CHAPTER
CARGO COMPARTMENT	S453T201-2, -5, -6, -7, -9, -10, -12, -13, -14, -15, -16, -17, -18 -19, -20	-148	B19 B20 OR B19 B20 B231	26-23-00
	S453T201-28, -33, -34, -35, -36, -37, -38, -41	-134 and -148	B19 B20 OR B19 B20 B231	
	S218W601-4, -20, -21	-182	B19 B20 B231 B888 V654 V655 (767-400)	

*[1] ALSO S218W601-4 FLOW VALVE

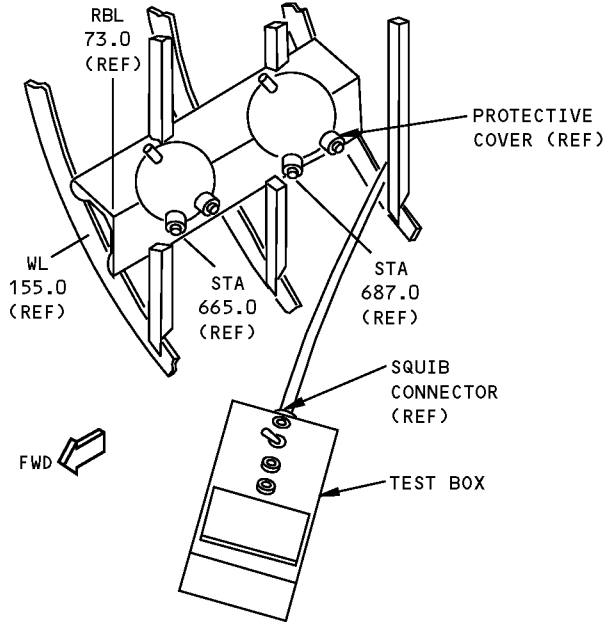
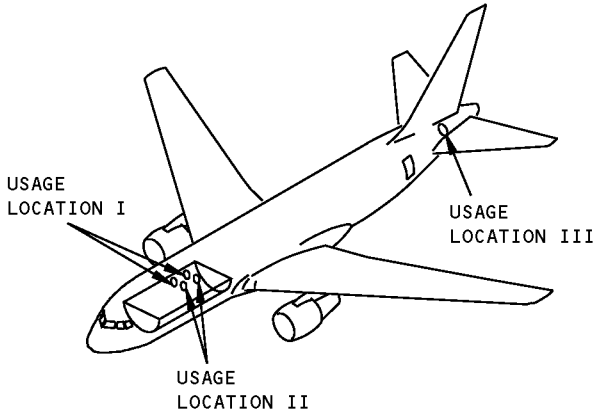
*[2] LEFT ENGINE BOTTLE 1 AND 2 (V214, V215), RIGHT ENGINE BOTTLE 1 AND 2 (V214, V215)

WEIGHT: 10 lbs (4.5 kg) (excluding box)

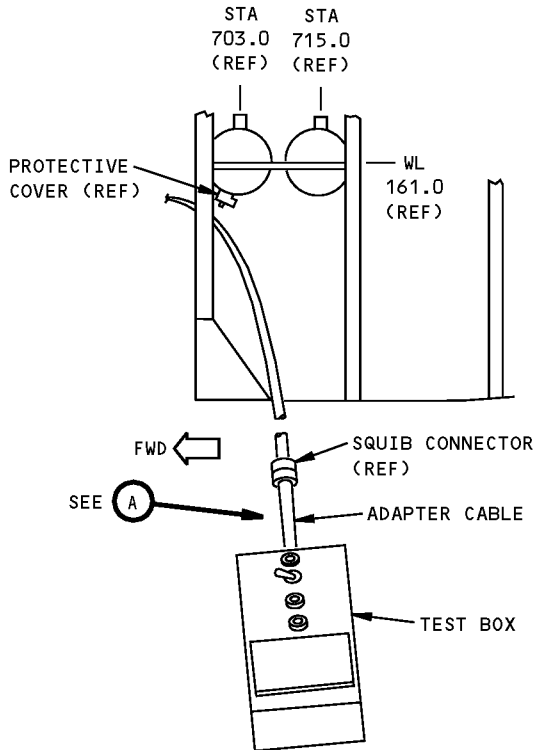
DIMENSIONS: 6 x 14 x 15 inches (152 x 356 x 381 mm) (excluding box)

NOTE: A26001-187 replaces A26001-174 for future procurement.
 A26001-174 replaces A26001-165 for future procurement.
 A26001-165 supersedes A26001-133.
 A26001-133 supersedes A26001-106.
 A26001-106 supersedes A26001-72.
 A26001-72 supersedes A26001-69.
 A26001-69 supersedes A26001-1,-41.
 A26001-165,-174,-187 is the test equipment.
 A26001-3, -4, -5, -24, -131, -132, -134, -135, -136, -137, -138, -139, -144, -145, -148, -175, -176 and -182 are adapter cable assemblies.

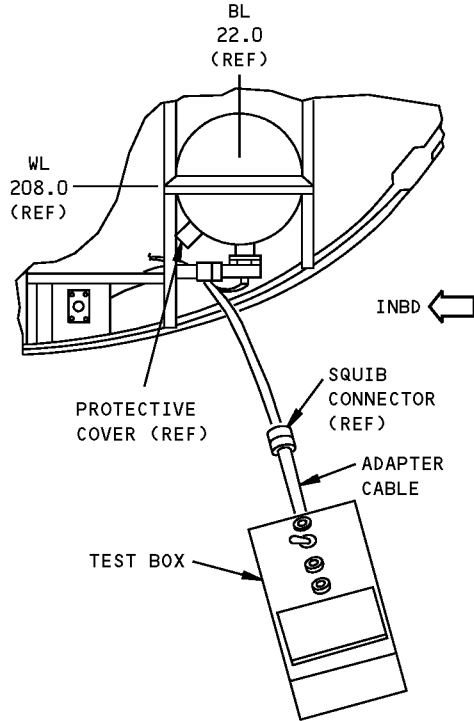
ILLUSTRATED TOOL AND EQUIPMENT MANUAL



**CARGO EXTINGUISHER BOTTLES
USAGE LOCATION I**



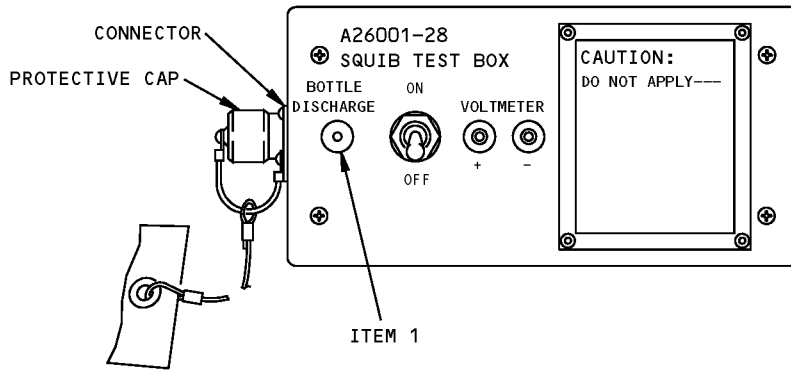
**ENGINE EXTINGUISHER BOTTLES
USAGE LOCATION II**



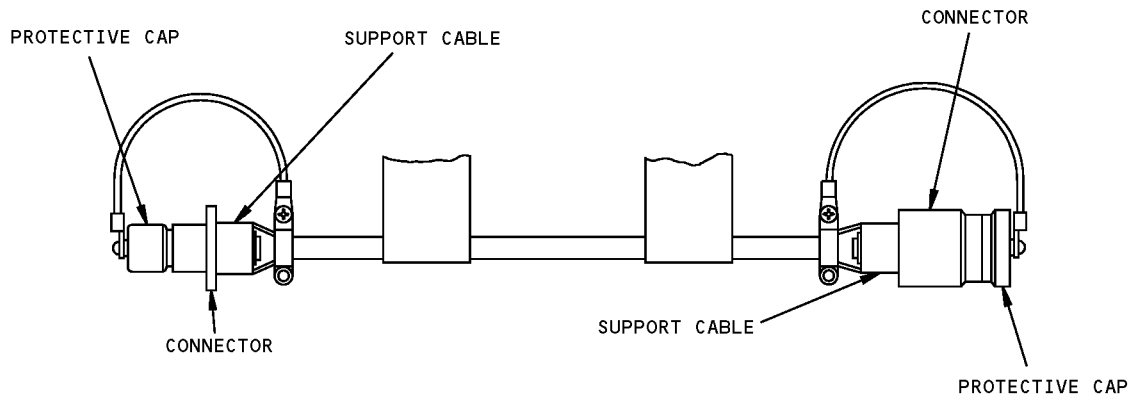
**APU EXTINGUISHER BOTTLE
USAGE LOCATION III**

**Fire Extinguisher System Bottle Squib Electrical Test Equipment
Figure 1 (Sheet 1 of 2)**

**767
ILLUSTRATED TOOL AND EQUIPMENT MANUAL**



**A26001-28
TEST BOX**



**A26001-3,-4,-5,-24,-131,-132,-134,-135,-136,-137,-138,
-139,-144,-145,-148,-175,-176 AND -182
CABLE ADAPTER**

A

**Fire Extinguisher System Bottle Squib Electrical Test Equipment
Figure 1 (Sheet 2 of 2)**



767

ILLUSTRATED TOOL AND EQUIPMENT MANUAL

REPAIRABLE/REPLACEABLE PARTS			
ITEM NO.	PART NO.	NOMENCLATURE	VENDOR CODE
1	507-4761-3331-500	LAMP	V83330



767

ILLUSTRATED TOOL AND EQUIPMENT MANUAL

PART NUMBER: A26002-36, -54

NAME: TEST BOX - TIME DELAY, CARGO FIRE EXTINGUISHER BOTTLE

AIRPLANE MAINTENANCE: YES

COMPONENT MAINTENANCE: NO

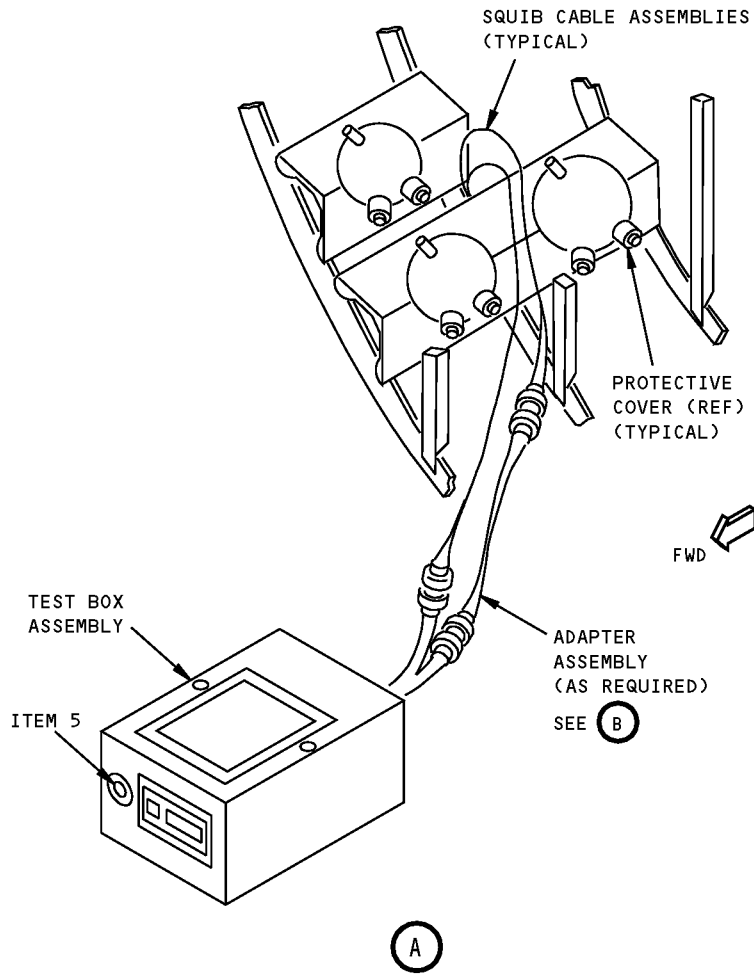
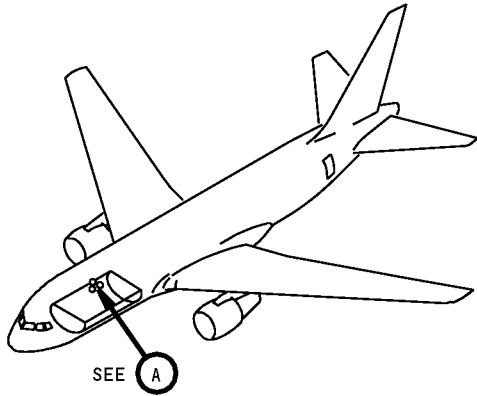
USAGE & DESCRIPTION: The A26002-54 test box is used on all 767 airplanes except 767-200SF, 767-300BCF and 767-400. This tool is used to record the length of time between initiation, and subsequent engagement of the cargo fire extinguisher bottles time delay relay. The -54 consists of a -52 test box assembly and a storage box assembly. Refer to AMM 26-23-03 and current A26002 drawing for further usage instructions. The -36 cables are optional, used to adapt between test box and forward squib airplane wiring. If used, 2 -36 cables are required.

WEIGHT: 5 lbs (2.3 kg)

DIMENSIONS: 6 x 8 x 12 inches (152 x 203 x 305 mm)

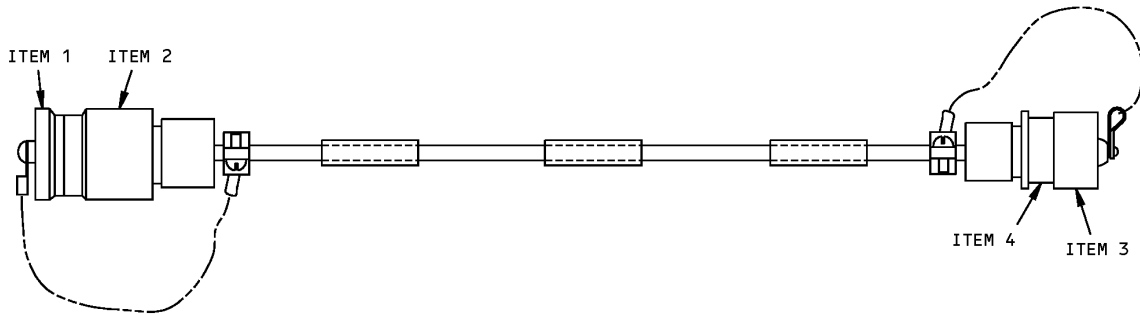
NOTE: A26002-54 supersedes A26002-51.
A26002-51 supersedes A26002-28.
A26002-28 supersedes A26002-17, -23.
A26002-23 added to A26002-17.
A26002-17 supersedes A26002-1.

**767
ILLUSTRATED TOOL AND EQUIPMENT MANUAL**



**Cargo Fire Extinguisher Bottle Time Delay Test Box
Figure 1 (Sheet 1 of 2)**

767
ILLUSTRATED TOOL AND EQUIPMENT MANUAL



A26002-36
 ADAPTER CABLE ASSEMBLY

ⓑ

Cargo Fire Extinguisher Bottle Time Delay Test Box
Figure 1 (Sheet 2 of 2)

REPAIRABLE/REPLACEABLE PARTS			
ITEM NO.	PART NO.	NOMENCLATURE	VENDOR CODE
1	507-4761-3331-500	LAMP	V83330



767

ILLUSTRATED TOOL AND EQUIPMENT MANUAL

PART NUMBER: A26003-7, -10

NAME: TEST EQUIPMENT - REGULATOR, CARGO FIRE EXTINGUISHING

AIRPLANE MAINTENANCE: YES

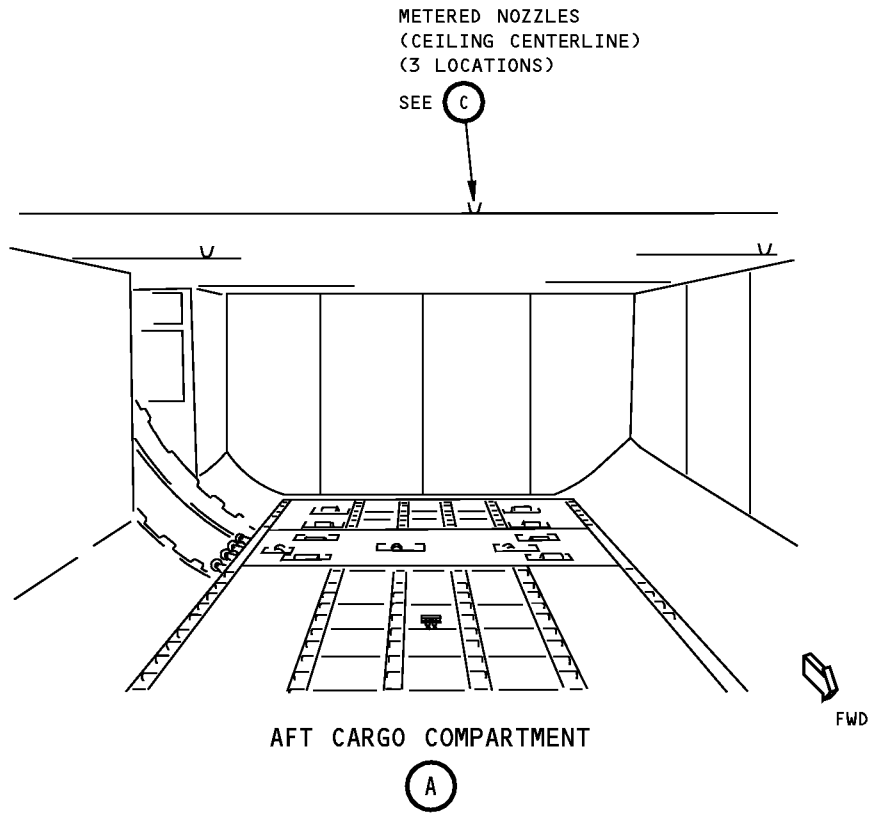
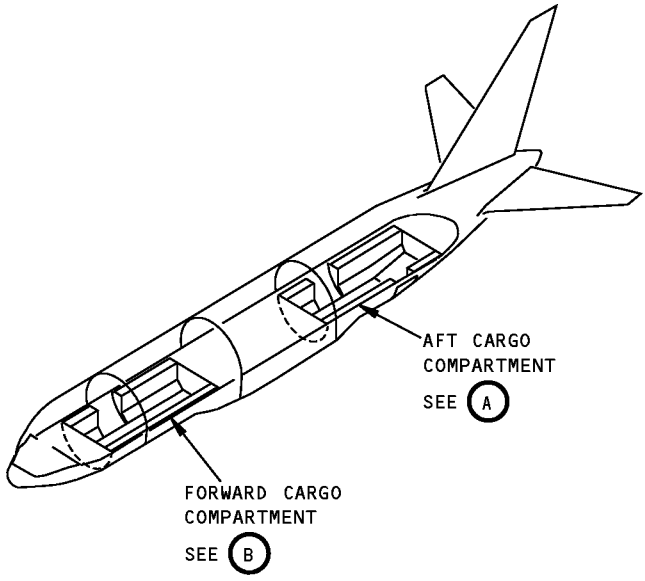
COMPONENT MAINTENANCE: NO

USAGE & DESCRIPTION: The A26003-7 or A26003-10 test equipment is used on 767-200 and 767-300 airplanes typically configured for ETOPS. This tool is not applicable to the 767-200SF and 767-300BCF cargo compartments. This test equipment is used to check the regulator in the metered cargo fire extinguishing system. Refer to AMM 26-23-00 and current A26003 drawing for further usage instructions. The -7 consists of a -8 fixture assembly, a 62B-2A-0200 gauge, 3 AN929-4J nozzle pressure caps and a -3 box assembly. The -10 consists of a -11 fixture assembly, a -12 gauge, 3 AN929-4J nozzle pressure caps and a -13 box assembly.

DIMENSIONS: 18 x 18 x 30 inches (457 x 457 x 762 mm)

NOTE: A26003-10 replaces A26003-7 for future procurement.
A26003-7 supersedes A26003-1.

**767
ILLUSTRATED TOOL AND EQUIPMENT MANUAL**

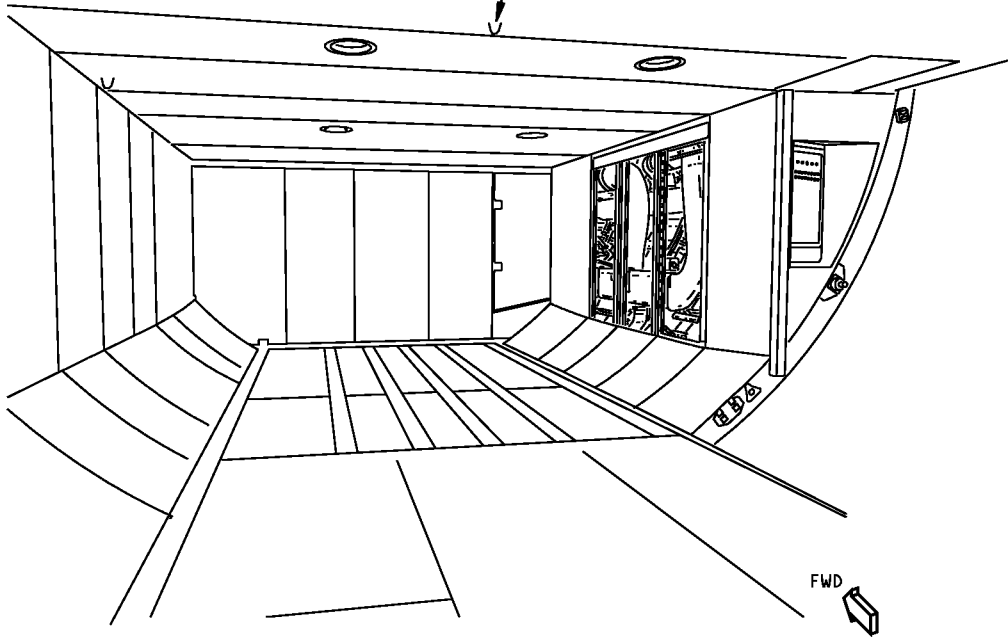


**Metered Fire Extinguisher Nozzle Locations
Figure 1**

767
ILLUSTRATED TOOL AND EQUIPMENT MANUAL

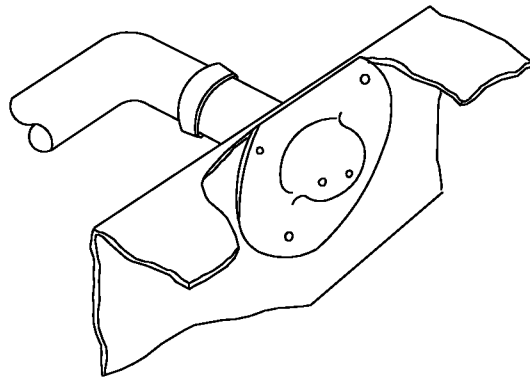
METERED NOZZLES
(CEILING CENTERLINE)
(2 LOCATIONS)

SEE (C)



FORWARD CARGO COMPARTMENT

(B)

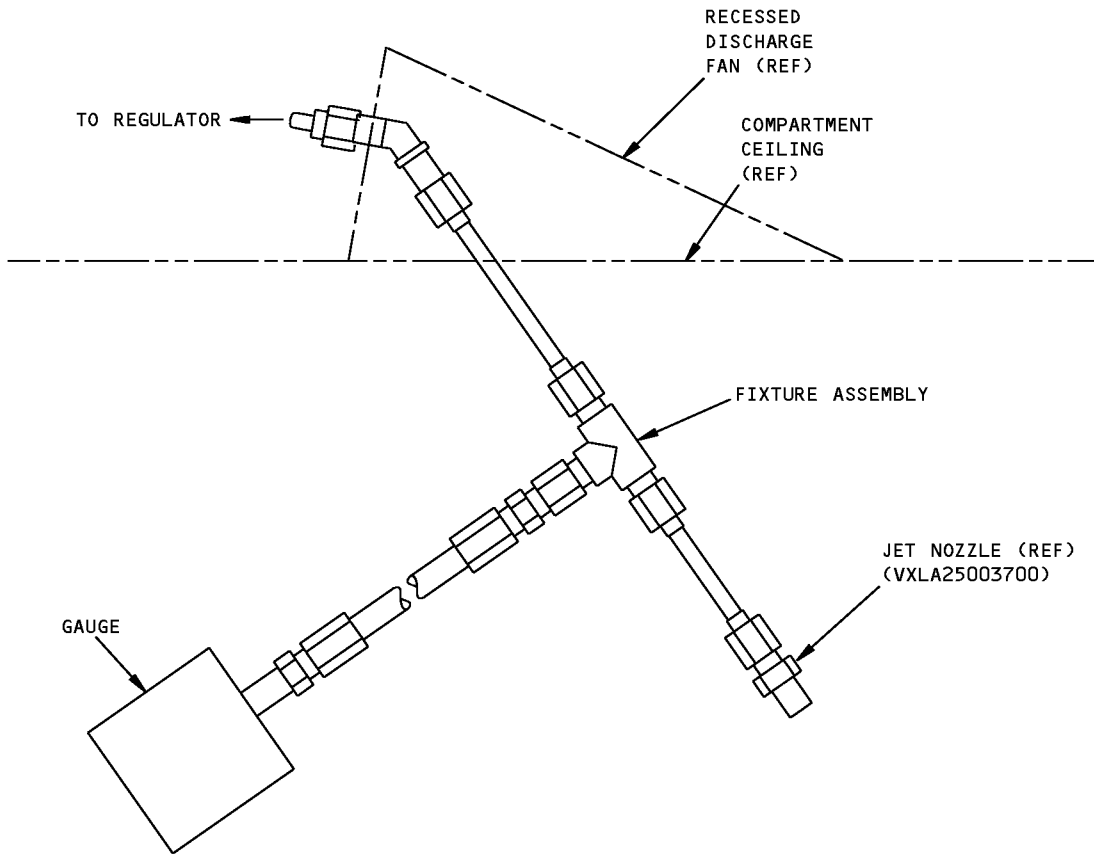


NOZZLE
(EXAMPLE)

(C)

Metered Fire extinguisher Nozzle Locations
Figure 2

**767
ILLUSTRATED TOOL AND EQUIPMENT MANUAL**



**Cargo Fire Extinguishing Regulator
Figure 3**

ILLUSTRATED TOOL AND EQUIPMENT MANUAL

PART NUMBER: A26004-1

NAME: PLUG EQUIPMENT - DISCHARGE NOZZLE, CARGO COMPARTMENT FIRE EXTINGUISHER

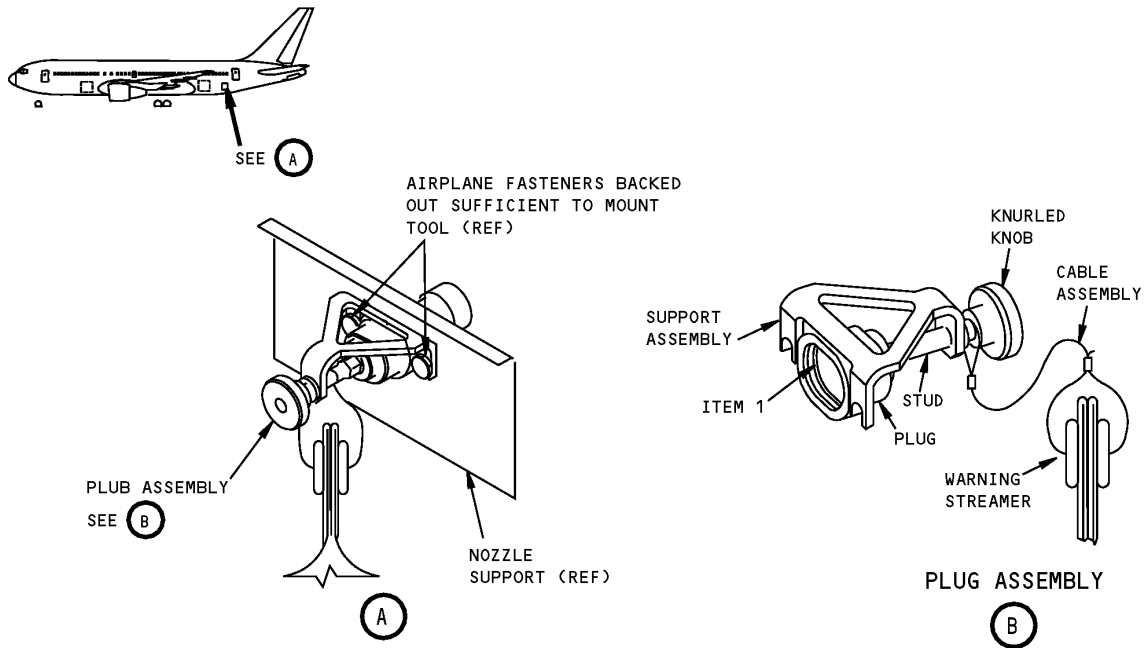
AIRPLANE MAINTENANCE: YES

COMPONENT MAINTENANCE: NO

USAGE & DESCRIPTION: This equipment is used to plug the discharge nozzles of the cargo compartment fire extinguisher system during pressure testing of discharge lines. Refer to AMM 26-23-00 and current A26004 drawing for further usage instructions. This tool is used on all 767 airplanes except 767-200SF, 767-300BCF and 767-400. This equipment consists of a plug assembly and a storage box assembly. The plug assembly consists of a support assembly, a plug, a stud, an o-ring, a warning streamer, a knurled knob, a swivel nut and a cable assembly.

WEIGHT: 0.3 lbs (0.14 kg)

DIMENSIONS: 5 x 6.5 x 6.5 inches (127 x 151 x 151 mm)



**Cargo Compartment Fire Extinguisher Discharge Nozzle Plug Equipment
Figure 1**



767

ILLUSTRATED TOOL AND EQUIPMENT MANUAL

REPAIRABLE/REPLACEABLE PARTS			
ITEM NO.	PART NO.	NOMENCLATURE	VENDOR CODE
1	NAS1601-118	O-RING	



767

ILLUSTRATED TOOL AND EQUIPMENT MANUAL

PART NUMBER: A26005-1

NAME: PLATFORM - MAINTENANCE, CARGO SIDEWALL

AIRPLANE MAINTENANCE: YES

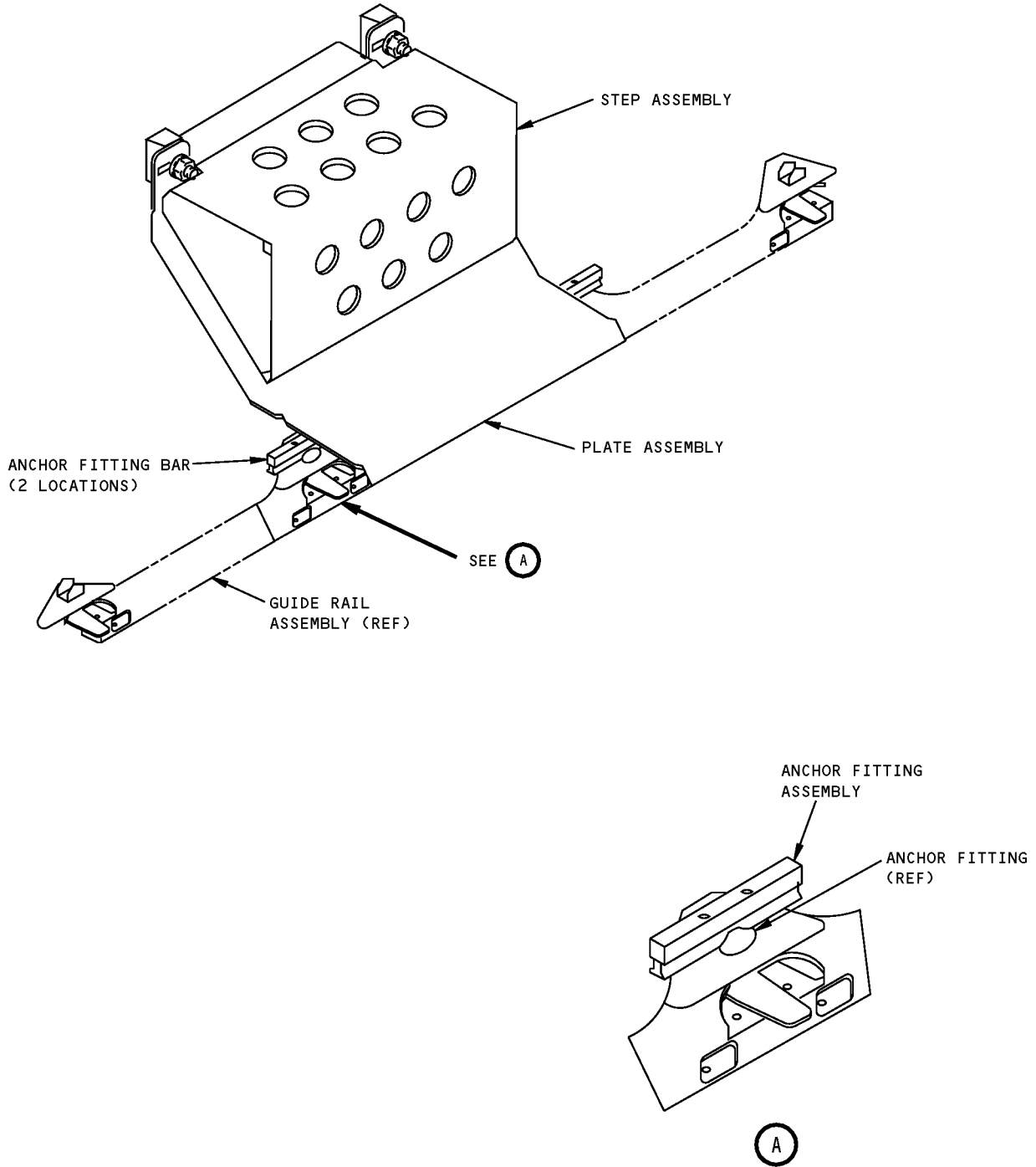
COMPONENT MAINTENANCE: NO

USAGE & DESCRIPTION: This tool is used for the removal/installation of the cargo fire extinguisher. Refer to AMM 26-23-00 for further usage instructions. This tool is used on 767-400ER airplanes. This tool consists of a -2 plate assembly, two -3 anchor fitting assemblies, a -4 step assembly and a storage box assembly.

WEIGHT: 21 lbs (9.5 kg) (excluding box)

DIMENSIONS: 18 x 23 x 30 inches (457 x 584 x 762 mm) (excluding box)

**767
ILLUSTRATED TOOL AND EQUIPMENT MANUAL**



**Cargo Sidewall Maintenance Platform
Figure 1**



767

ILLUSTRATED TOOL AND EQUIPMENT MANUAL

PART NUMBER: J26005-24, -32

NAME: TEST EQUIPMENT - FIRE EXTINGUISHER TUBING, CARGO COMPARTMENT

AIRPLANE MAINTENANCE: YES

COMPONENT MAINTENANCE: NO

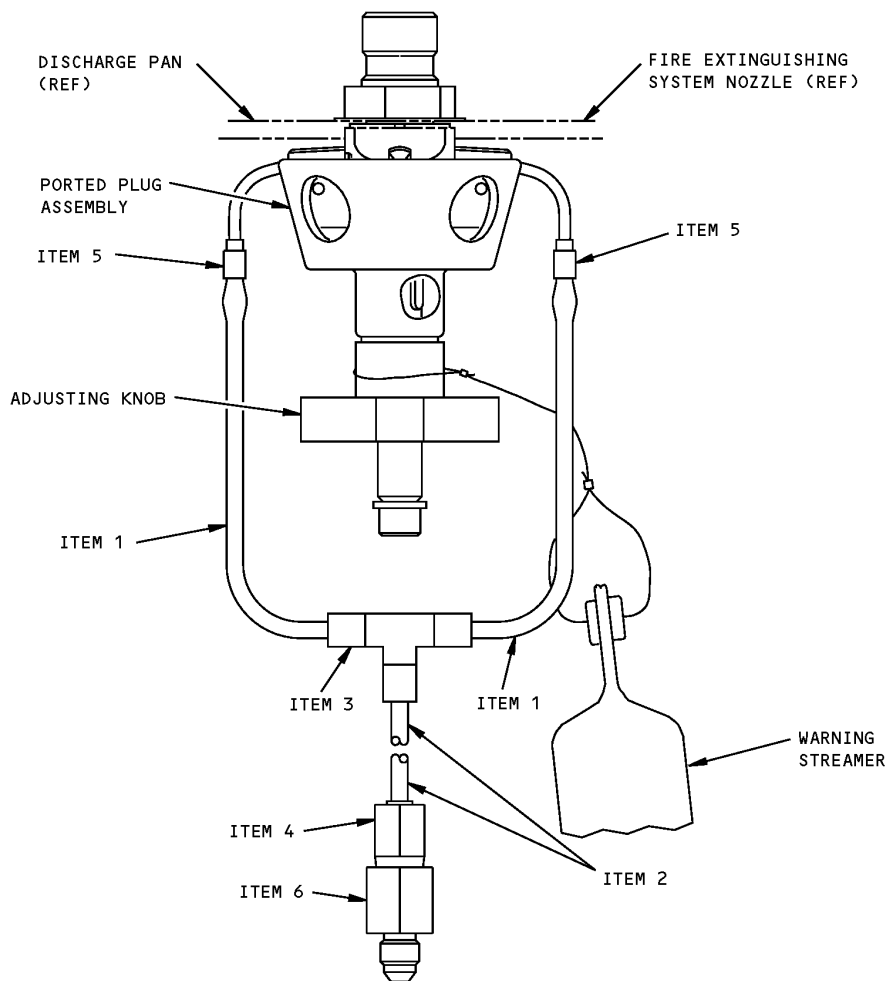
USAGE & DESCRIPTION: The J26005-1 test equipment is used on 767-400 airplanes. This tool is used to accomplish the leak test on the forward and aft cargo compartment fire extinguishing system. The maximum operating pressure is 100 PSI. Refer to AMM 26-23-00 and current J26005 drawing for complete usage instructions. The -24 consists of a -20 ported plug assembly, four -21 plug assemblies and a -25 storage box assembly. The J26005-32 test equipment consists of a -29 ported plug assembly, four -30 plug assemblies and a -31 storage box assembly.

WEIGHT: 5 lbs (2.3 kg)

DIMENSIONS: 4 x 6 x 20 inches (102 x 152 x 508 mm)

NOTE: J26005-32 replaces J26005-24 for future procurement.
J26009 replaces J26005 for future procurement.

767
ILLUSTRATED TOOL AND EQUIPMENT MANUAL



Cargo Compartment Fire Extinguisher Tubing Test Equipment
Figure 1

REPAIRABLE/REPLACEABLE PARTS			
ITEM NO.	PART NO.	NOMENCLATURE	VENDOR CODE
1	-9	NYLON TUBE	V58755
2	-10	NYLON TUBE	V58755
3	31045500	UNION TEE	V58755
4	31155514	CONNECTOR	V58755
5	33010	HOSE CLAMP	V9C303
6	6GTX	CONNECTOR	V30780



767

ILLUSTRATED TOOL AND EQUIPMENT MANUAL

PART NUMBER: J26009-1

NAME: TEST EQUIPMENT - FIRE EXTINGUISHING TUBING, CARGO COMPARTMENT

AIRPLANE MAINTENANCE: YES

COMPONENT MAINTENANCE: NO

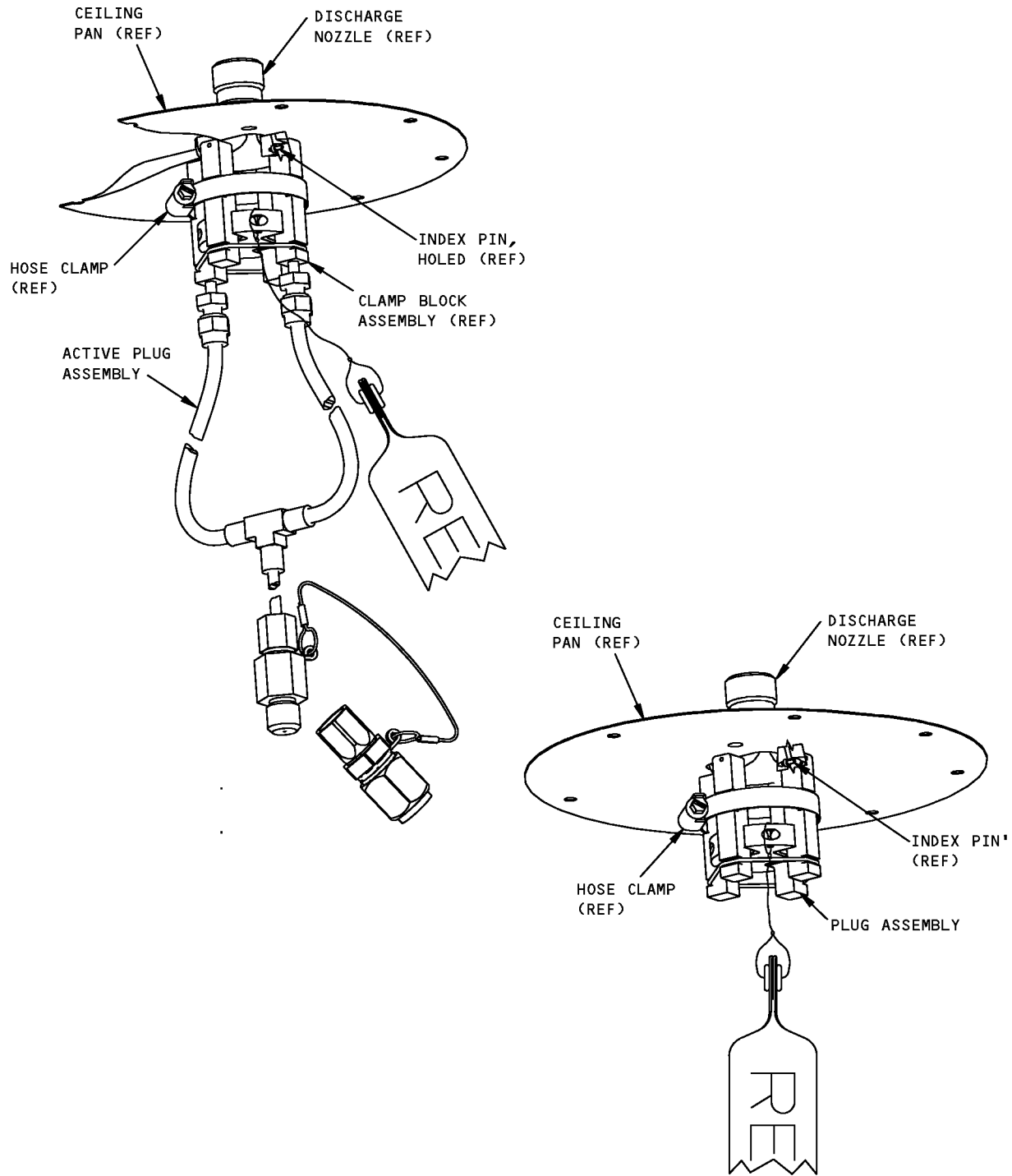
USAGE & DESCRIPTION: The J26009-1 test equipment is used on 767-400 airplanes. The tool is used to accomplish the leak test on the forward and aft cargo compartment fire extinguishing system. Maximum operating pressure is 100 psi. Refer to AMM 26-23-00 and current J26009 drawing for additional usage information. The J26009-1 consists of one J26009-2 active plug assembly, four J26009-3 plug assemblies, and a storage box.

WEIGHT: 3.6 lbs (1.6 kg)

DIMENSIONS: 3 x 3 x 6 inches (76 x 76 x 152)

NOTE: J26009 replaces J26005 for future procurement.

ILLUSTRATED TOOL AND EQUIPMENT MANUAL



TEST EQUIPMENT - FIRE EXTINGUISHER TUBING, CARGO COMPARTMENT
Figure 1