

CHAPTER

29

HYDRAULIC POWER



767
ILLUSTRATED TOOL AND EQUIPMENT MANUAL

CHAPTER 29
HYDRAULIC POWER

Subject/Page	Date	Subject/Page	Date	Subject/Page	Date
EFFECTIVE PAGES		29-20-04			
1	Apr 10/2008	1	Apr 10/2007		
2	BLANK	2	Apr 10/2007		
29-CONTENTS		3	Apr 10/2007		
1	Apr 10/2006	4	BLANK		
2	BLANK	29-20-05			
29-00-01		1	Apr 10/2007		
1	Apr 10/2006	2	Apr 10/2007		
2	Apr 10/2006	3	Apr 10/2007		
3	Apr 10/2006	4	BLANK		
4	BLANK	29-20-06			
29-00-02		1	Apr 10/2007		
1	Apr 10/2006	2	Apr 10/2007		
2	Apr 10/2006	3	Apr 10/2007		
29-00-03		4	BLANK		
1	Apr 10/2006	29-20-07			
2	Apr 10/2006	1	Apr 10/2007		
29-10-01		2	Apr 10/2007		
1	Apr 10/2006	3	Apr 10/2007		
2	Apr 10/2006	4	BLANK		
3	Apr 10/2006	29-30-01			
4	BLANK	1	Apr 10/2006		
29-10-02		2	Apr 10/2006		
1	Apr 10/2006	3	Apr 10/2006		
2	Apr 10/2006	4	BLANK		
29-10-03		29-30-02			
1	Apr 10/2006	1	Apr 10/2006		
2	Apr 10/2006	1	Apr 10/2006		
3	Apr 10/2006				
4	BLANK				
29-20-01					
1	Apr 10/2006				
2	Apr 10/2006				
29-20-02					
1	Apr 10/2006				
2	Apr 10/2006				
29-20-03					
1	Apr 10/2006				
2	Apr 10/2006				

A = Added, R = Revised, O = Overflow, D = Deleted

29-EFFECTIVE PAGES



767

ILLUSTRATED TOOL AND EQUIPMENT MANUAL

TABLE OF CONTENTS

<u>Subject</u>	<u>Title</u>	<u>Part No.</u>
29-	HYDRAULIC POWER	
29-00-01	HOIST ADAPTER - AIR-DRIVEN HYDRAULIC PUMP	A29001-1
29-00-02	LOCKING PIN - VALVE, HYDRAULIC RESERVOIR PRESSURIZATION SHUTOFF	A29002-6
29-00-03	SCREEN EQUIPMENT - RAM AIR TURBINE	B29001-23, -46
29-10-01	TOOL SET - HYDRAULIC FILTER OVERHAUL	A29003-49
29-10-02	TOOL SET - HYDRAULIC FILTER MODULE OVERHAUL	A29004-1
29-10-03	PLUG SET - PRESSURE TEST, HYDRAULIC RESERVOIR ASSEMBLY	J29005-30
29-20-01	WRENCH - RAT HUB BEARING INSTALLATION/REMOVAL	WAS-33662
29-20-02	COVER - RAT TURBINE BLADE	732021
29-20-03	PROTECTIVE COVER - RAT HUB	734734
29-20-04	ASSEMBLY BULLET	BLS-34529
29-20-05	ASSEMBLY BULLET	BLS-34533
29-20-06	SIZING DIE	DAS-34530
29-20-07	SIZING DIE	DAS-34534
29-30-01	SEALING CAP - PRESSURE TRANSMITTER MOUNT	A29005-1
29-30-02	TEST BOX - PRESSURE/THERMAL SWITCH	A29006-19

29-CONTENTS



767

ILLUSTRATED TOOL AND EQUIPMENT MANUAL

PART NUMBER: A29001-1

NAME: HOIST ADAPTER - AIR-DRIVEN HYDRAULIC PUMP

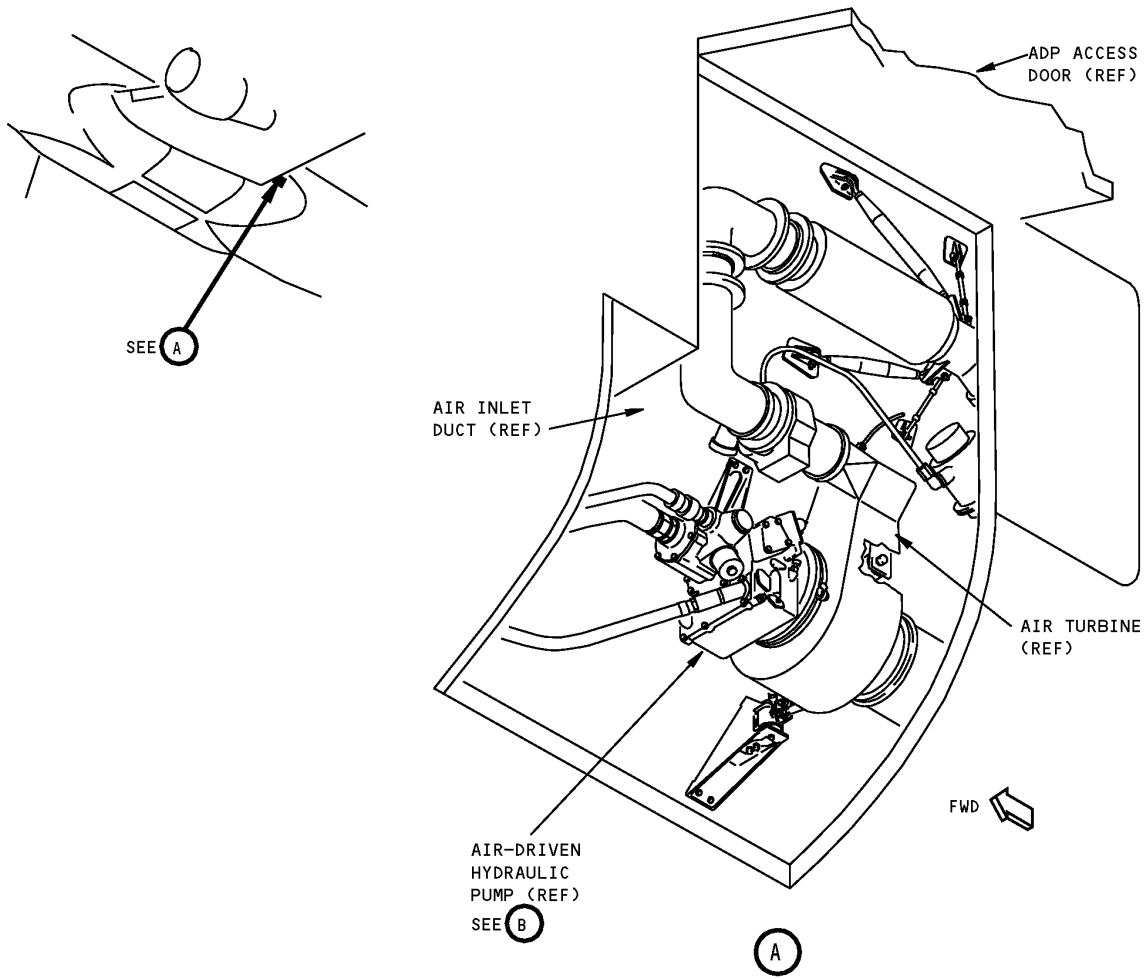
AIRPLANE MAINTENANCE: YES

COMPONENT MAINTENANCE: NO

USAGE & DESCRIPTION: This tool is used in conjunction with the A20001-1 hoist to lift and position the air-driven hydraulic pump during removal/installation. The tool consists of a welded structure with padded extensions that hold the pump in position while it is being removed or installed.

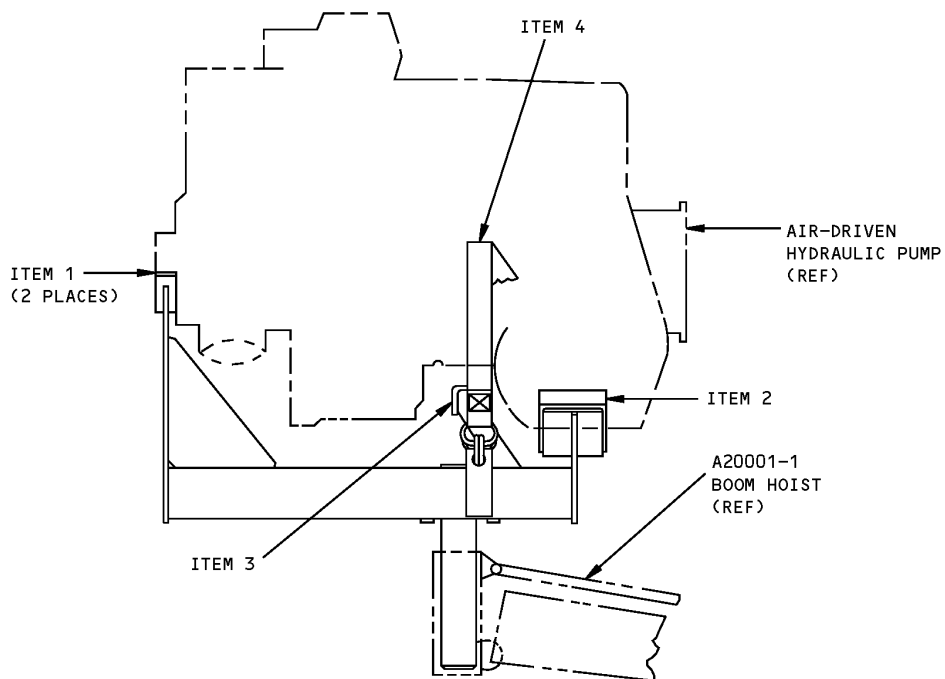
WEIGHT: 10 lbs (4.5 kg)

DIMENSIONS: 11 x 15.8 x 16.8 inches (279 x 401 x 427 mm)



**Air-Driven Hydraulic Pump Hoist Adapter
Figure 1 (Sheet 1 of 2)**

767
ILLUSTRATED TOOL AND EQUIPMENT MANUAL



B

Air-Driven Hydraulic Pump Hoist Adapter
Figure 1 (Sheet 2 of 2)

REPAIRABLE/REPLACEABLE PARTS			
ITEM NO.	PART NO.	NOMENCLATURE	VENDOR CODE
1	-14	PAD	
2	-15	PAD	
3	-16	PAD	
4	3101006L045-004	STRAP ASSY	V01276



767

ILLUSTRATED TOOL AND EQUIPMENT MANUAL

PART NUMBER: A29002-6

NAME: LOCKING PIN - VALVE, HYDRAULIC RESERVOIR PRESSURIZATION SHUTOFF

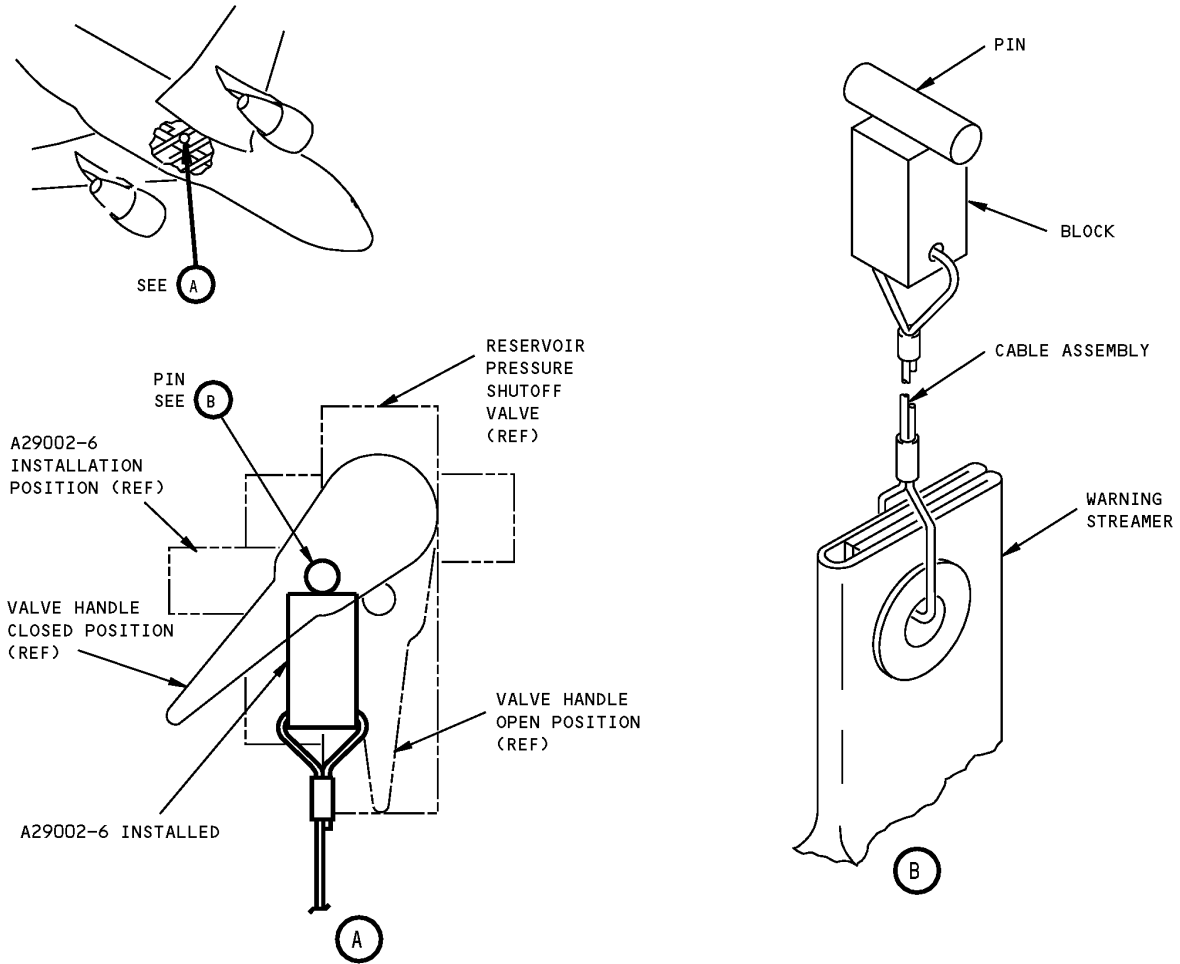
AIRPLANE MAINTENANCE: YES

COMPONENT MAINTENANCE: NO

USAGE & DESCRIPTION: This tool is a locking pin, mounted on a block which is installed in the hydraulic reservoir system shutoff valve handle to hold the valve in the closed/off position. As the handle is moved into open or closed positions, the locking pin secures the handle. Refer to AMM 29-11-00 for complete usage instructions. Refer to drawing 271T4563 and 272T0170 for valve assembly. This tool consists of a pin assembly and a box.

WEIGHT: 2.5 lbs (1.1 kg)

DIMENSIONS: 4 x 6 x 8 inches (102 x 152 x 203 mm)



**Hydraulic Reservoir Pressurization Valve Shutoff Locking Pin
Figure 1**

ILLUSTRATED TOOL AND EQUIPMENT MANUAL

PART NUMBER: B29001-23, -46

NAME: SCREEN EQUIPMENT - RAM AIR TURBINE

AIRPLANE MAINTENANCE: YES

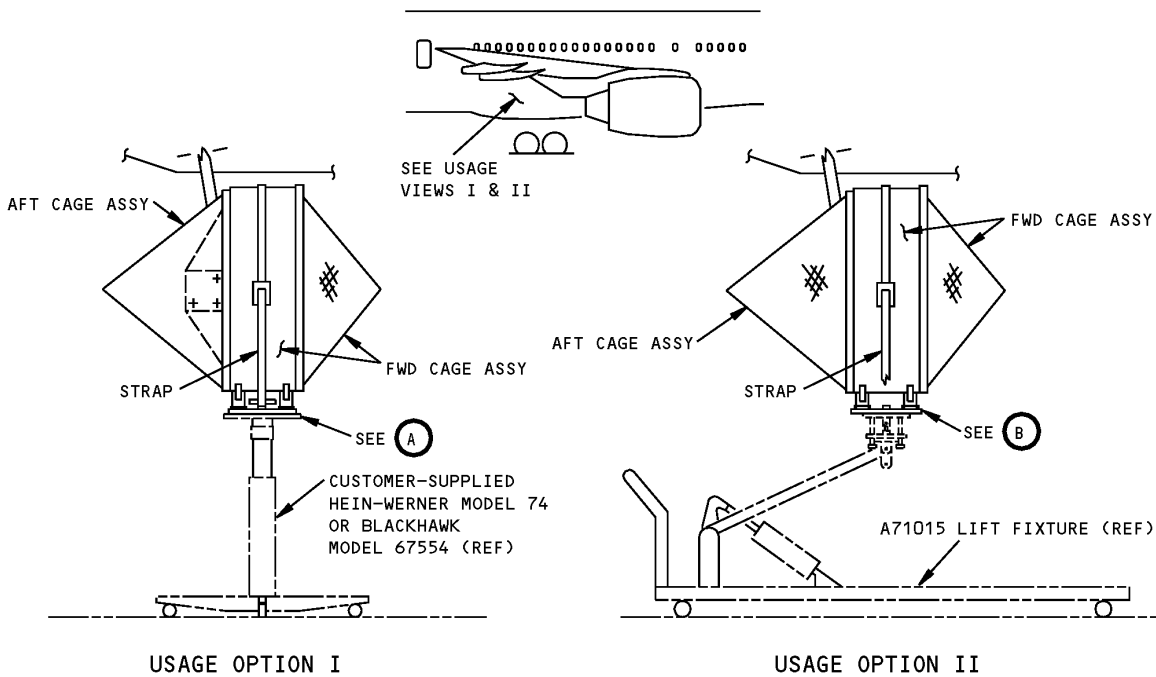
COMPONENT MAINTENANCE: NO

USAGE & DESCRIPTION: This tool is used to protect personnel during Ram Air Turbine (RAT) testing. The -46 is used with either a Hein-Werner Model 74 or Blackhawk Model 67554 customer furnished jack. The -23 adapter assembly is an option for use with -46 and A71015 lift fixture. The tool consists of a forward and aft cage assembly with attach fitting for use with lift devices.

WEIGHT: 125 lbs (57 kg)

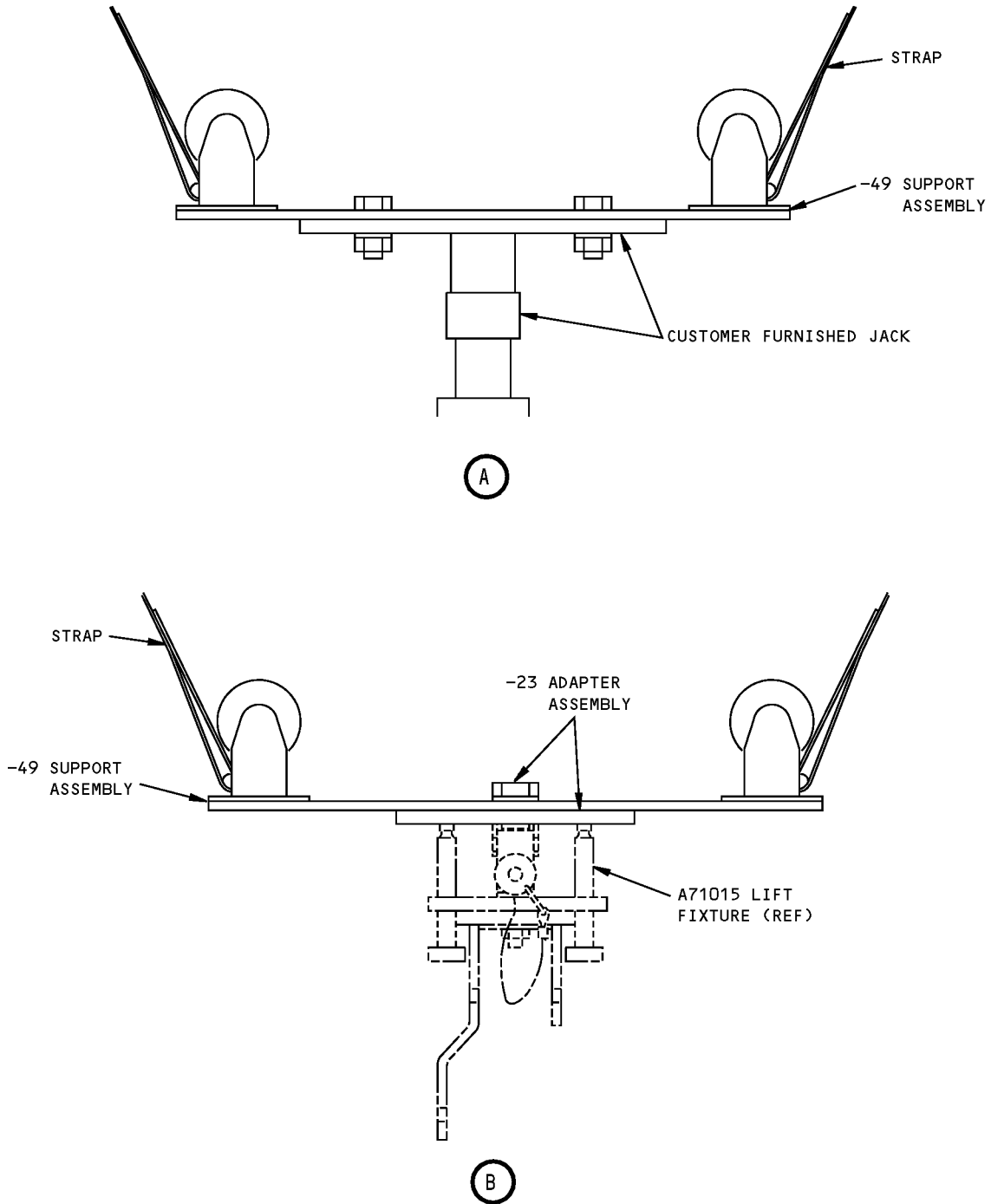
DIMENSIONS: 36 x 36 x 48 inches (914 x 914 x 1219 mm)

NOTE:
 B29001-46 supersedes B29001-42
 B29001-42 supersedes B29001-27
 B29001-27 supersedes B29001-1



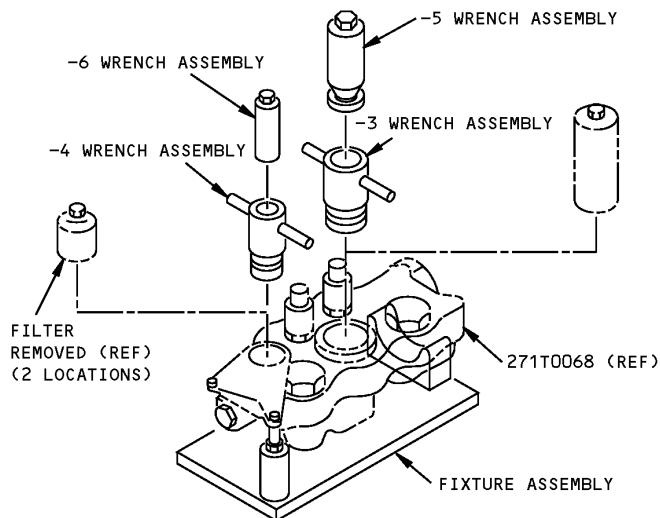
**Ram Air Turbine Screen Equipment
 Figure 1 (Sheet 1 of 2)**

**767
ILLUSTRATED TOOL AND EQUIPMENT MANUAL**

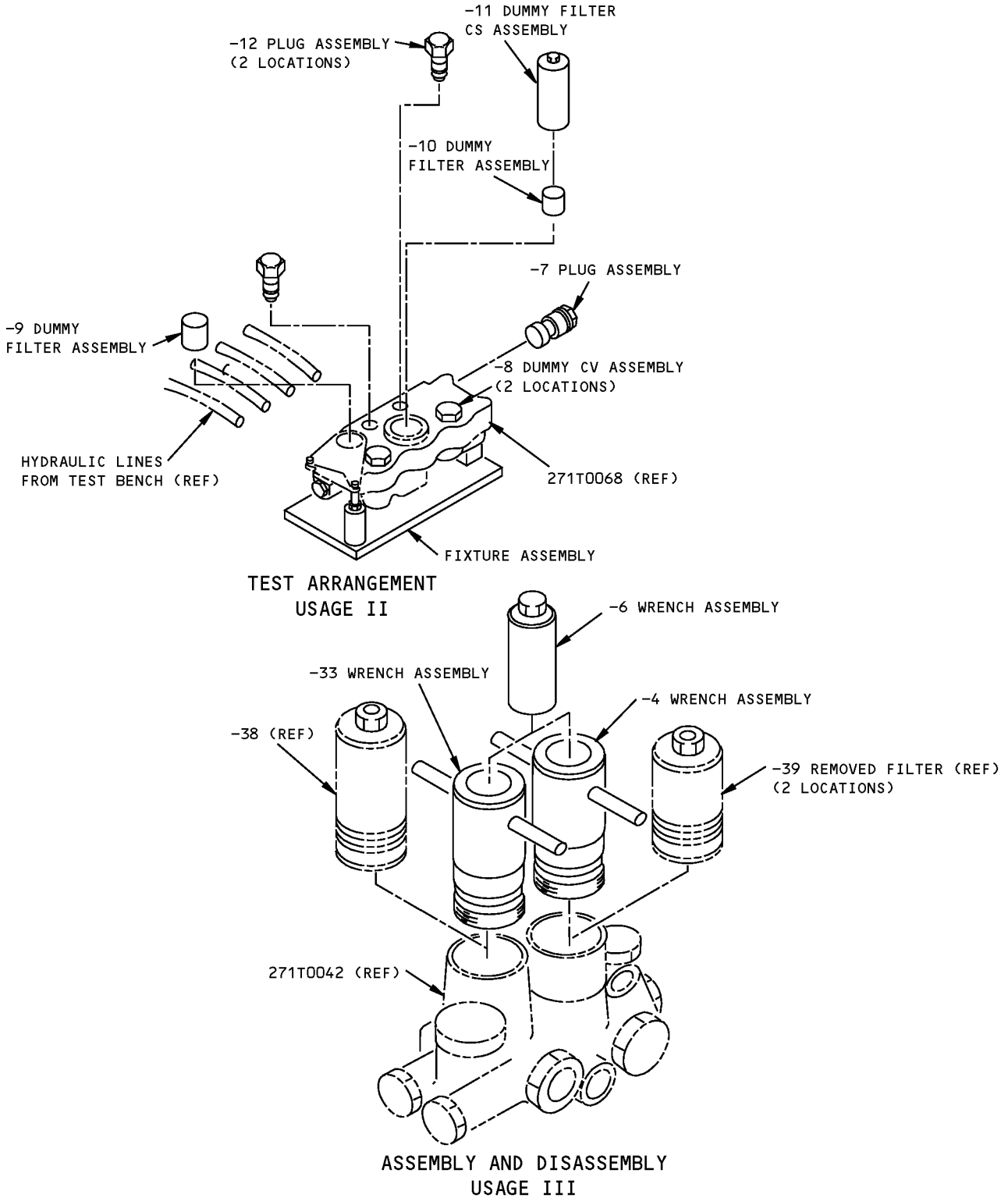


**Ram Air Turbine Screen Equipment
Figure 1 (Sheet 2 of 2)**

ILLUSTRATED TOOL AND EQUIPMENT MANUAL

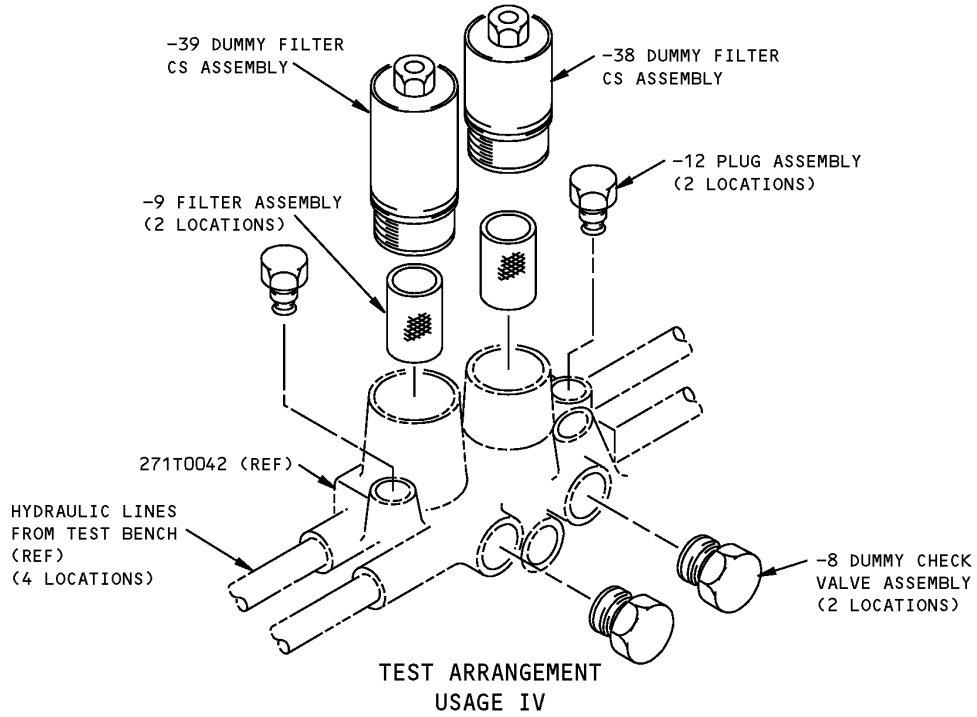
PART NUMBER: A29003-49**NAME:** TOOL SET - HYDRAULIC FILTER OVERHAUL**AIRPLANE MAINTENANCE:** NO**COMPONENT MAINTENANCE:** YES**USAGE & DESCRIPTION:** This tool set is used to assemble/disassemble and functional test hydraulic filter modules 271T0042 and 271T0068. The set consists of a fixture assembly for 271T0068 only, plug assemblies, dummy filter assemblies, check valve and wrenches. For additional usage information see CMM 29-11-41 and 29-11-46**WEIGHT:** 22 lbs (10 kg)**DIMENSIONS:** 8 x 8 x 17 inches (203 x 203 x 432 mm)**NOTE:** A29003-49 supersedes A29003-1.ASSEMBLY AND DISASSEMBLY
USAGE I**Hydraulic Filter Overhaul Tool Set
Figure 1 (Sheet 1 of 3)**

ILLUSTRATED TOOL AND EQUIPMENT MANUAL



**Hydraulic Filter Overhaul Tool Set
Figure 1 (Sheet 2 of 3)**

ILLUSTRATED TOOL AND EQUIPMENT MANUAL



**Hydraulic Filter Overhaul Tool Set
Figure 1 (Sheet 3 of 3)**



767

ILLUSTRATED TOOL AND EQUIPMENT MANUAL

PART NUMBER: A29004-1

NAME: TOOL SET - HYDRAULIC FILTER MODULE OVERHAUL

AIRPLANE MAINTENANCE: NO

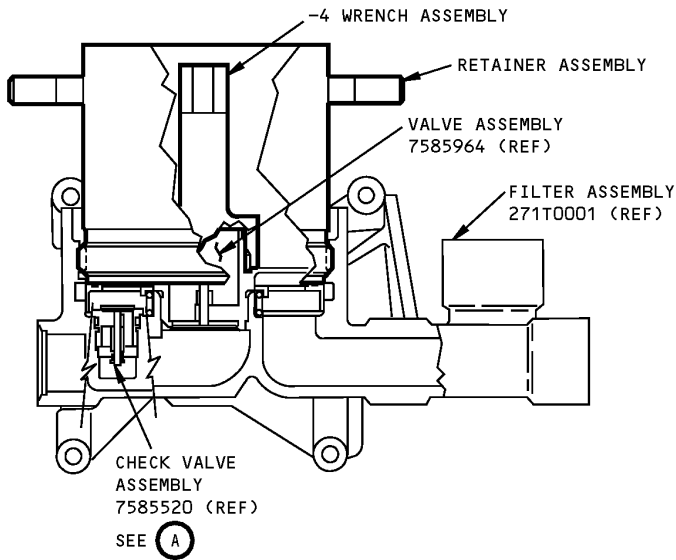
COMPONENT MAINTENANCE: YES

USAGE & DESCRIPTION: This tool set consists of two wrench assemblies, two punches, a die set, dummy plug assembly and a retainer. The wrench assemblies remove/install the filter module valves, the punches expand the valves to prevent leaking and the dummy plug is used during functional test of the hydraulic return filter module assembly. For additional usage information see CMM 29-11-35.

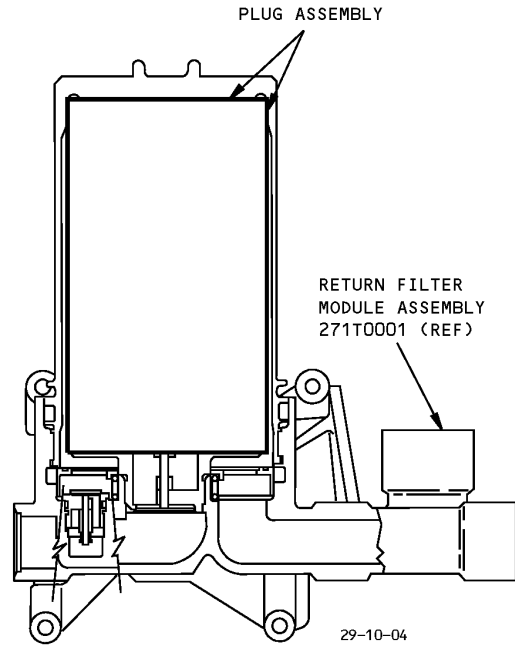
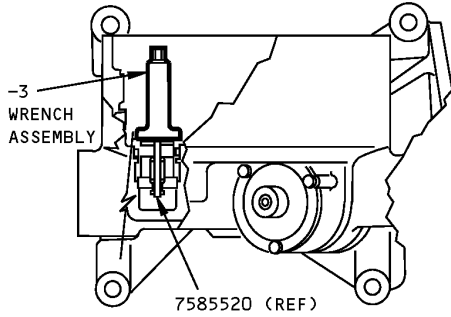
WEIGHT: 28 lbs (13 kg)

DIMENSIONS: 6 x 10 x 12 inches (152 x 254 x 305 mm)

ILLUSTRATED TOOL AND EQUIPMENT MANUAL



A29004-1
DISASSEMBLY AND ASSEMBLY
USAGE I



A29004-1
FUNCTIONAL TEST
USAGE II

**Hydraulic Filter Overhaul Tool Set
Figure 1**



767

ILLUSTRATED TOOL AND EQUIPMENT MANUAL

PART NUMBER: J29005-30

NAME: PLUG SET - PRESSURE TEST, HYDRAULIC RESERVOIR ASSEMBLY

AIRPLANE MAINTENANCE: NO

COMPONENT MAINTENANCE: YES

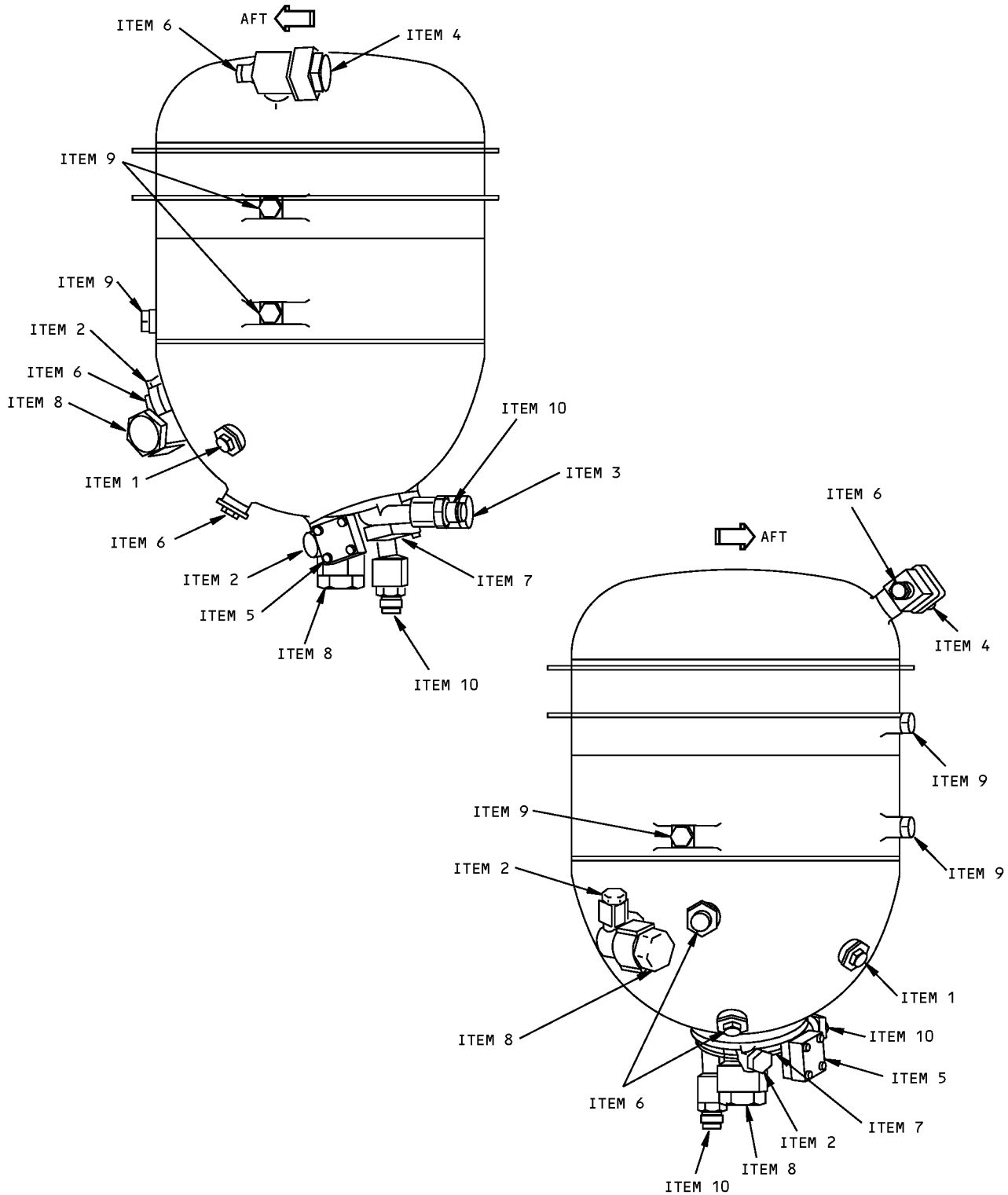
USAGE & DESCRIPTION: This tool is used to seal various ports on the hydraulic reservoirs during flushing and pressure testing. Refer to CMM 29-11-20 for further usage instructions. This tool is used on the 767-400 airplanes. This tool consists of the following:

J29005-30		
QUANTITY	NOMENCLATURE	PART NUMBER
1	PLUG ASSEMBLY-A	J29005-2
2	PLUG ASSEMBLY-B	J29005-3
1	PLUG ASSEMBLY-C	J29005-4
1	PLUG ASSEMBLY-D	J29005-5
1	PLUG ASSEMBLY-E	J29005-6
3	PLUG ASSEMBLY-F	J29005-7
1	PLUG ASSEMBLY-G	J29005-8
2	PLUG ASSEMBLY-J	J29005-10
3	PLUG ASSEMBLY-K	J29005-11
2	ADAPTER ASSEMBLY-M	J29005-13
1	STORAGE BOX ASSEMBLY	J29005-31

WEIGHT: 3.5 lbs (1.6 kg)

DIMENSIONS: 2 x 14 x 14 inches (51 x 356 x 356 mm)

ILLUSTRATED TOOL AND EQUIPMENT MANUAL



**Hydraulic Reservoir Assembly Pressure Test Plug Set
Figure 1**



767

ILLUSTRATED TOOL AND EQUIPMENT MANUAL

REPAIRABLE/REPLACEABLE PARTS			
ITEM NO.	PART NO.	NOMENCLATURE	VENDOR CODE
1	-2	PLUG ASSEMBLY-A	
2	-3	PLUG ASSEMBLY-B	
3	-4	PLUG ASSEMBLY-C	
4	-5	PLUG ASSEMBLY-D	
5	-6	PLUG ASSEMBLY-E	
6	-7	PLUG ASSEMBLY-F	
7	-8	PLUG ASSEMBLY-G	
8	-10	PLUG ASSEMBLY-J	
9	-11	PLUG ASSEMBLY-K	
10	-13	ADAPTER ASSEMBLY-M	



767

ILLUSTRATED TOOL AND EQUIPMENT MANUAL

PART NUMBER: WAS-33662

NAME: WRENCH - RAT HUB BEARING INSTALLATION/REMOVAL

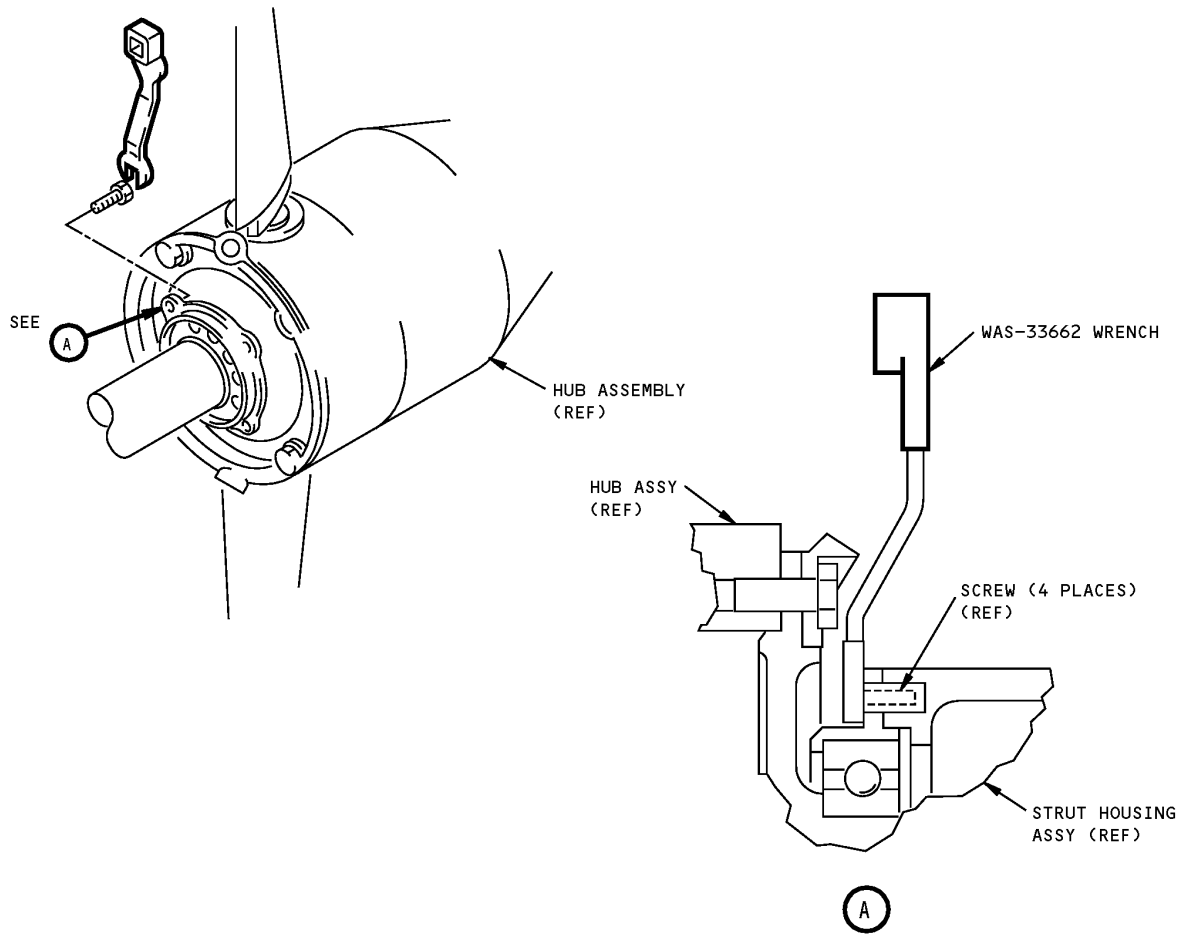
AIRPLANE MAINTENANCE: NO

COMPONENT MAINTENANCE: YES

USAGE & DESCRIPTION: This tool is used to remove, install and torque the screws mounting the bearing support to the turbine assembly.

NOTE: This tool is a supplier proprietary item and can only be obtained from Sundstrand Aviation Operation, 4747 Harrison Ave, P.O. Box 7002, Rockford, Illinois 61125

DIMENSIONS: 1 x 2 x 6 inches (25 x 51 x 152 mm)



**RAT Hub Bearing Installation/Removal Wrench
Figure 1**



767

ILLUSTRATED TOOL AND EQUIPMENT MANUAL

PART NUMBER: 732021

NAME: COVER - RAT TURBINE BLADE

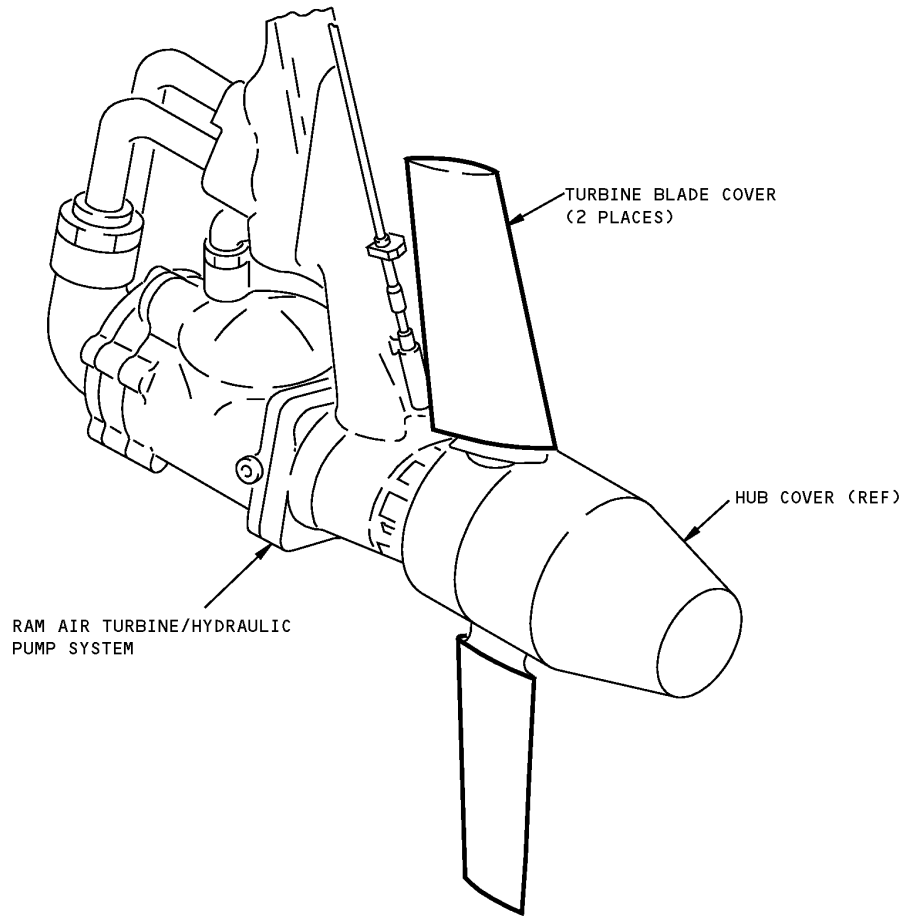
AIRPLANE MAINTENANCE: NO

COMPONENT MAINTENANCE: YES

USAGE & DESCRIPTION: This tool is a pair of protective covers for the blades of the ram air turbine (RAT), during maintenance and shipping.

NOTE: This tool is a supplier proprietary item and can only be obtained from Sundstrand Aviation, Division of Sundstrand Corporation, 4747 Harrison Ave, P.O. Box 7002, Rockford, Illinois 61101. Vendor code: V99167.

DIMENSIONS: 2 x 6 x 18 inches (51 x 152 x 457 mm)



**RAT Turbine Blade Cover
Figure 1**



767

ILLUSTRATED TOOL AND EQUIPMENT MANUAL

PART NUMBER: 734734

NAME: PROTECTIVE COVER - RAT HUB

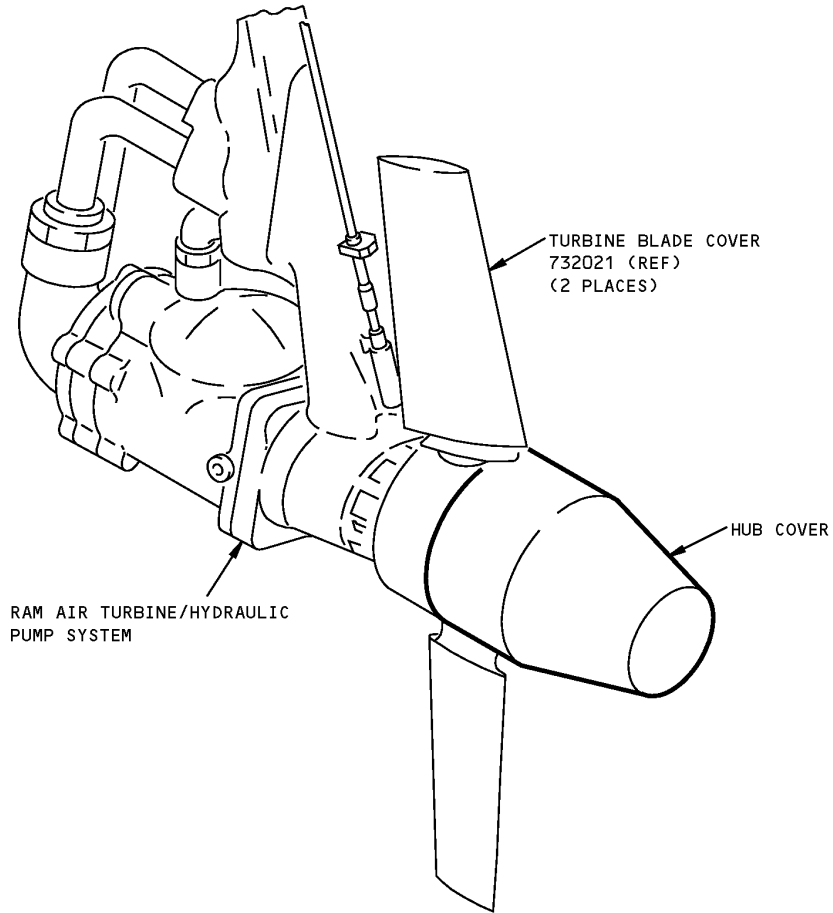
AIRPLANE MAINTENANCE: NO

COMPONENT MAINTENANCE: YES

USAGE & DESCRIPTION: This cover protects the hub of the ram air turbine (RAT), during maintenance and shipping.

NOTE: This tool is a supplier proprietary item and can only be obtained from Sundstrand Aviation, Division of Sundstrand Corporation, 4747 Harrison Ave, P.O. Box 7002, Rockford, Illinois 61101. Vendor code: V99167.

DIMENSIONS: 16 x 16 x 18 inches (406 x 406 x 457 mm)



**RAT Hub Protective Cover
Figure 1**



767

ILLUSTRATED TOOL AND EQUIPMENT MANUAL

PART NUMBER: BLS-34529

NAME: ASSEMBLY BULLET

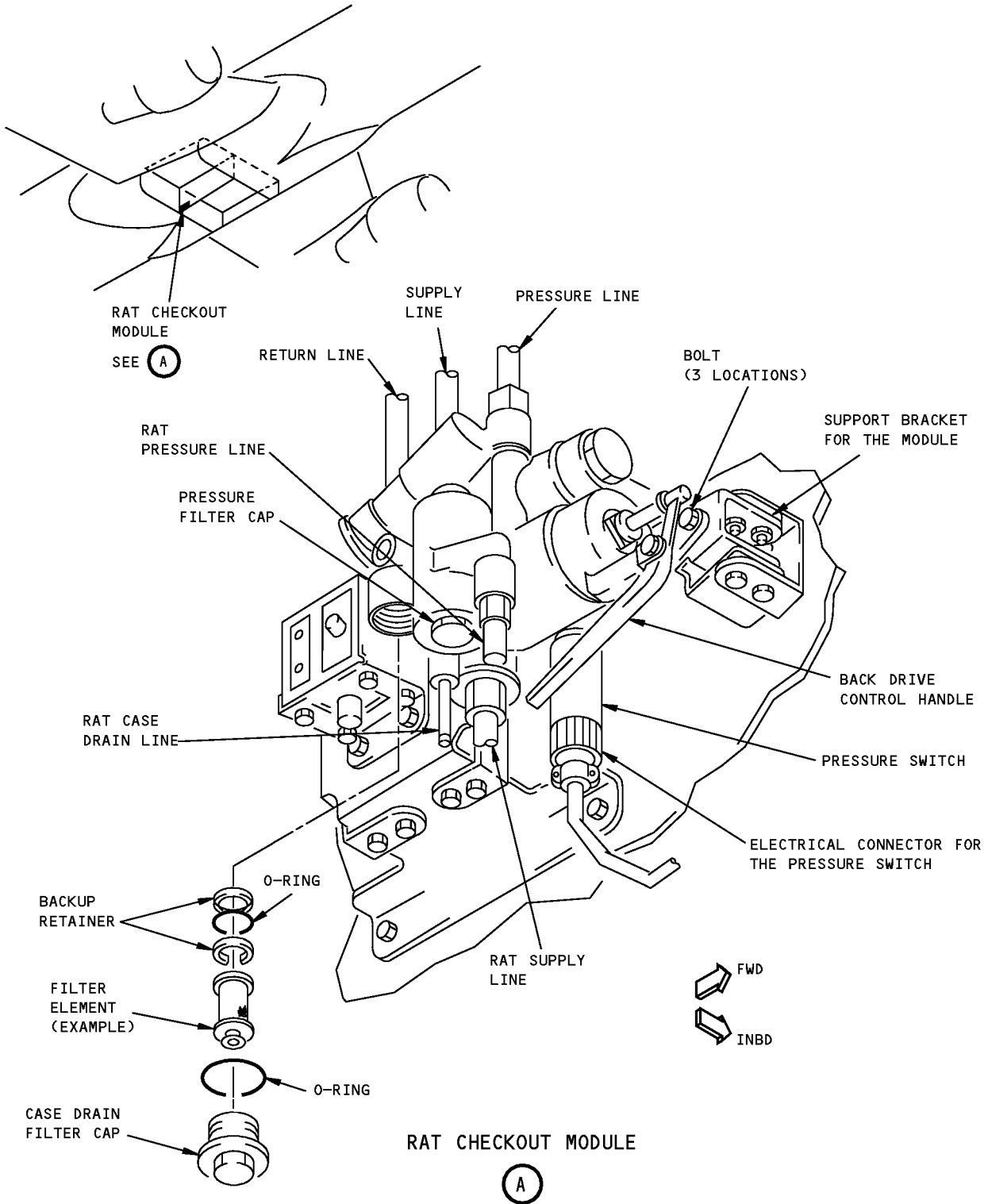
AIRPLANE MAINTENANCE: YES

COMPONENT MAINTENANCE: YES

USAGE & DESCRIPTION: The BLS-34529 assembly bullet is used on all 767 airplanes. The tool is used to install the O-ring (P/N NAS1611-012) and backup retainers (P/N MS27595-012) on the case drain filter element (P/N AC8818E1, 7553574, 11-10106) of the ram air turbine checkout module (P/N 729550A, 729550B, 729550C, 729550D). Refer to CMM 29-21-02 and AMM 29-21-11 for further usage instructions.

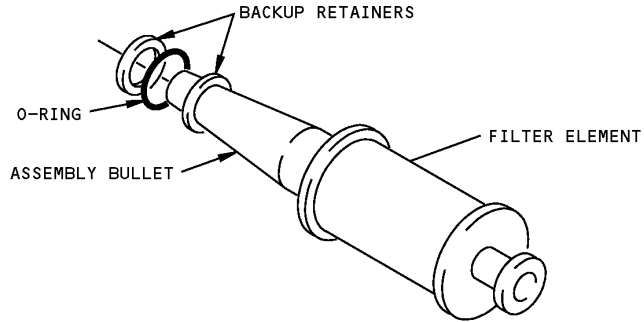
NOTE: This tool is a supplier proprietary item and can only be obtained from Hamilton Sundstrand Corporation, 4747 Harrison Ave, Rockford, Illinois 61125.

ILLUSTRATED TOOL AND EQUIPMENT MANUAL



**Ram Air Turbine (RAT) Checkout Module Location
Figure 1**

767
ILLUSTRATED TOOL AND EQUIPMENT MANUAL



Assembly Bullet
Figure 2



767

ILLUSTRATED TOOL AND EQUIPMENT MANUAL

PART NUMBER: BLS-34533

NAME: ASSEMBLY BULLET

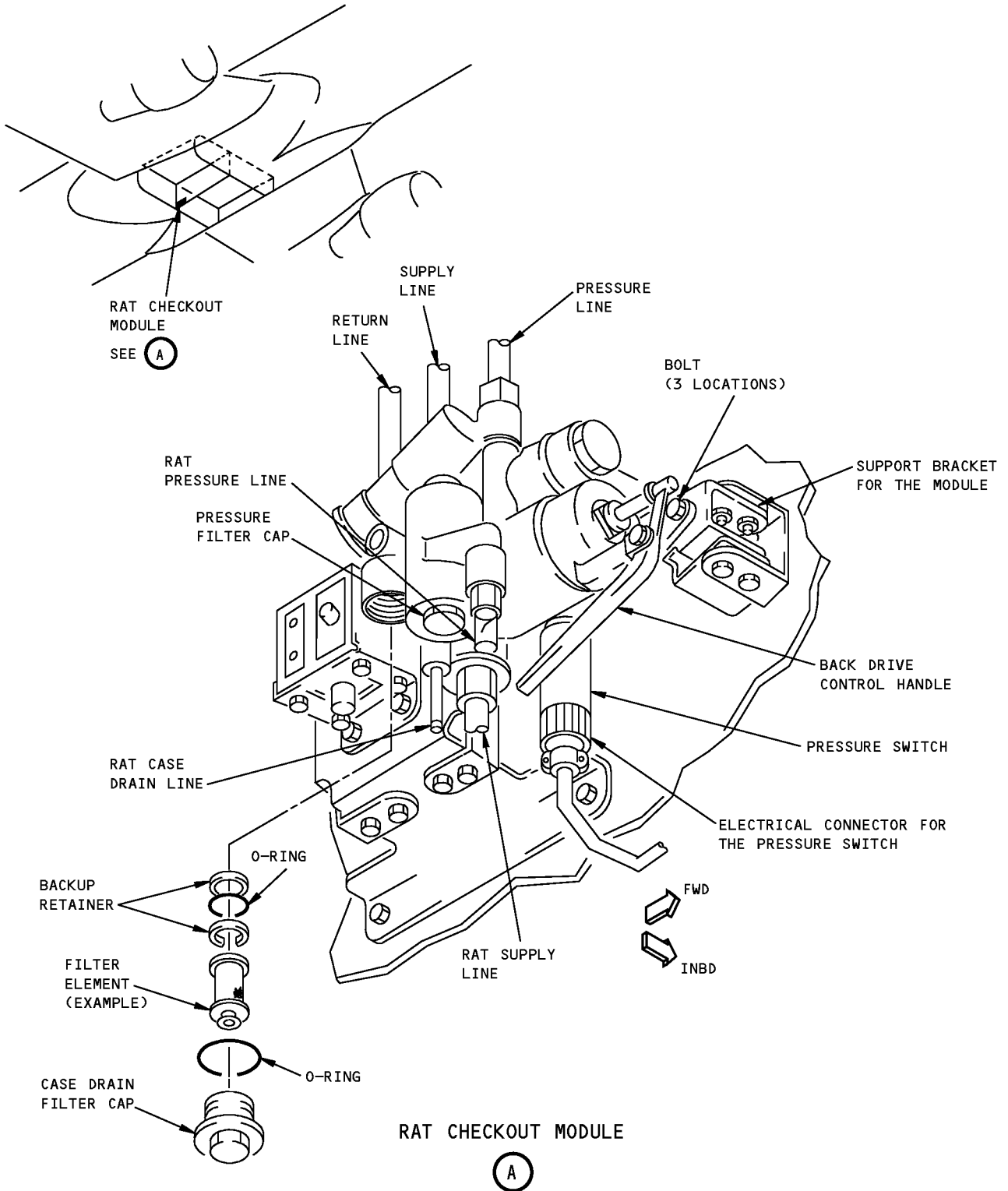
AIRPLANE MAINTENANCE: YES

COMPONENT MAINTENANCE: YES

USAGE & DESCRIPTION: The BLS-34533 assembly bullet is used on all 767 airplanes. The tool is used to install the O-ring (P/N NAS 1611-116) and backup retainers (P/N MS27595-116) on the pressure filter element (P/N AC8818E2, 7553575, 11-10107) of the ram air turbine ground checkout module (P/N 729550A, 729550B, 729550C, 729550D). Refer to CMM 29-21-02 and AMM 29-21-11 for further usage instructions.

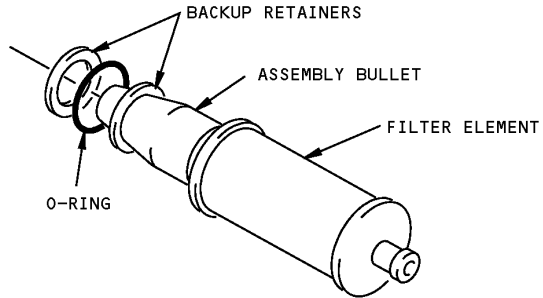
NOTE: This tool is a supplier proprietary item and can only be obtained from Hamilton Sundstrand Corporation, 4747 Harrison Ave, Rockford, Illinois 61125

ILLUSTRATED TOOL AND EQUIPMENT MANUAL



**Ram Air Turbine (RAT) Checkout Module Location
Figure 1**

767
ILLUSTRATED TOOL AND EQUIPMENT MANUAL



Assembly Bullet
Figure 2



767

ILLUSTRATED TOOL AND EQUIPMENT MANUAL

PART NUMBER: DAS-34530

NAME: SIZING DIE

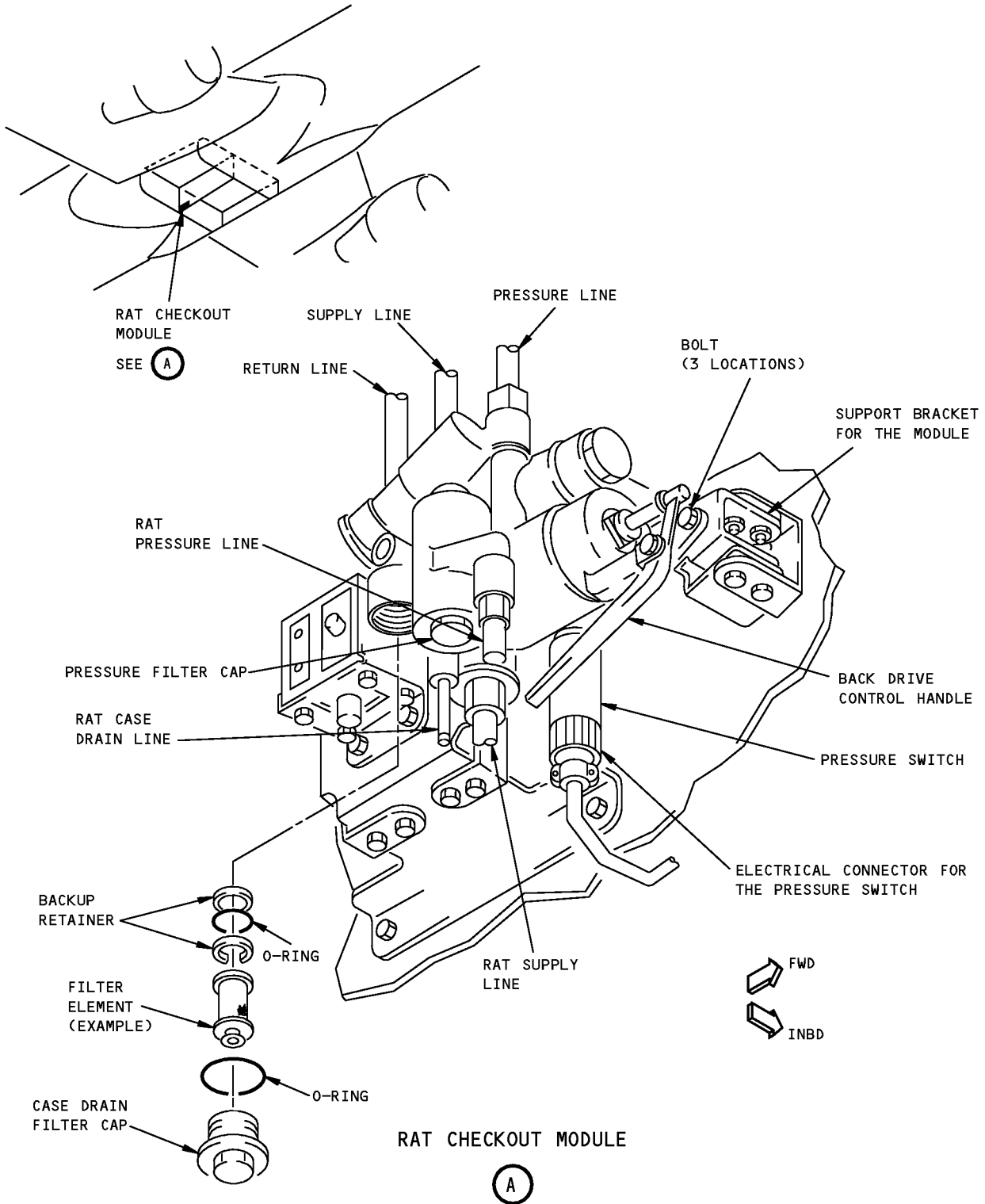
AIRPLANE MAINTENANCE: YES

COMPONENT MAINTENANCE: YES

USAGE & DESCRIPTION: The DAS-34530 sizing die is used on all 767 airplanes. The tool is used to size the backup retainers (P/N MS27595-012) on the case drain filter element (P/N AC8818E1, 7553574, 11-10106) of the ram air turbine checkout module (P/N 729550A, 729550B, 729550C, 729550D). Refer to CMM 29-21-02 and AMM 29-21-11 for further instructions.

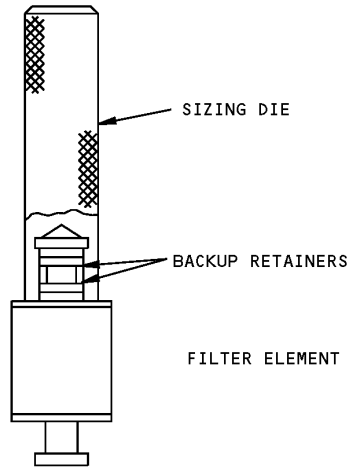
NOTE: This tool is a supplier proprietary item and can only be obtained from Hamilton Sundstrand Corporation, 4747 Harrison Ave, Rockford, Illinois 61125

ILLUSTRATED TOOL AND EQUIPMENT MANUAL



**Ram Air Turbine (RAT) Checkout Module Location
Figure 1**

767
ILLUSTRATED TOOL AND EQUIPMENT MANUAL



Sizing Die
Figure 2



767

ILLUSTRATED TOOL AND EQUIPMENT MANUAL

PART NUMBER: DAS-34534

NAME: SIZING DIE

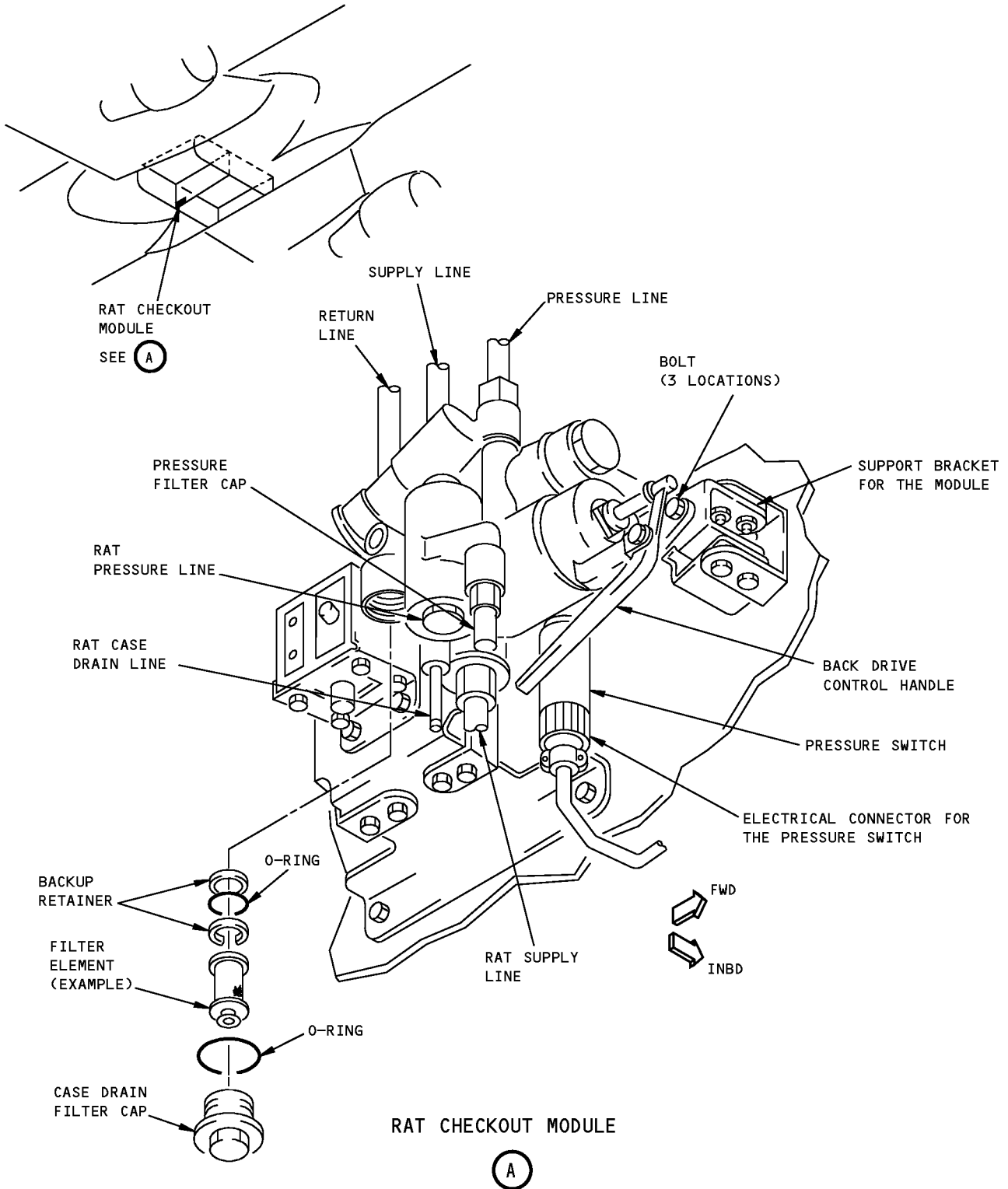
AIRPLANE MAINTENANCE: YES

COMPONENT MAINTENANCE: YES

USAGE & DESCRIPTION: The DAS-34534 sizing die is used on all 767 airplanes. The tool is used to size the backup retainers (PN MS27595-116) on the pressure filter element (P/N AC8818E2, 753575, 11-10107) of the ram air turbine checkout module (P/N 72955A, 72955B, 72955C, 72955D). Refer to CMM 29-21-02 and AMM 29-21-11 for further instructions.

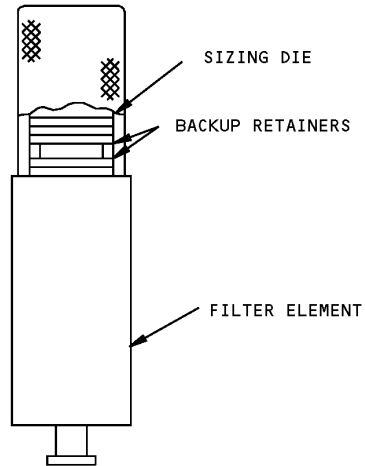
NOTE: This tool is a supplier proprietary item and can only be obtained from Hamilton Sundstrand Corporation, 4747 Harrison Ave, Rockford, Illinois 61125.

ILLUSTRATED TOOL AND EQUIPMENT MANUAL



Ram Air Turbine (RAT) Checkout Module Location
Figure 1

767
ILLUSTRATED TOOL AND EQUIPMENT MANUAL



Sizing Die
Figure 2



767

ILLUSTRATED TOOL AND EQUIPMENT MANUAL

PART NUMBER: A29005-1

NAME: SEALING CAP - PRESSURE TRANSMITTER MOUNT

AIRPLANE MAINTENANCE: NO

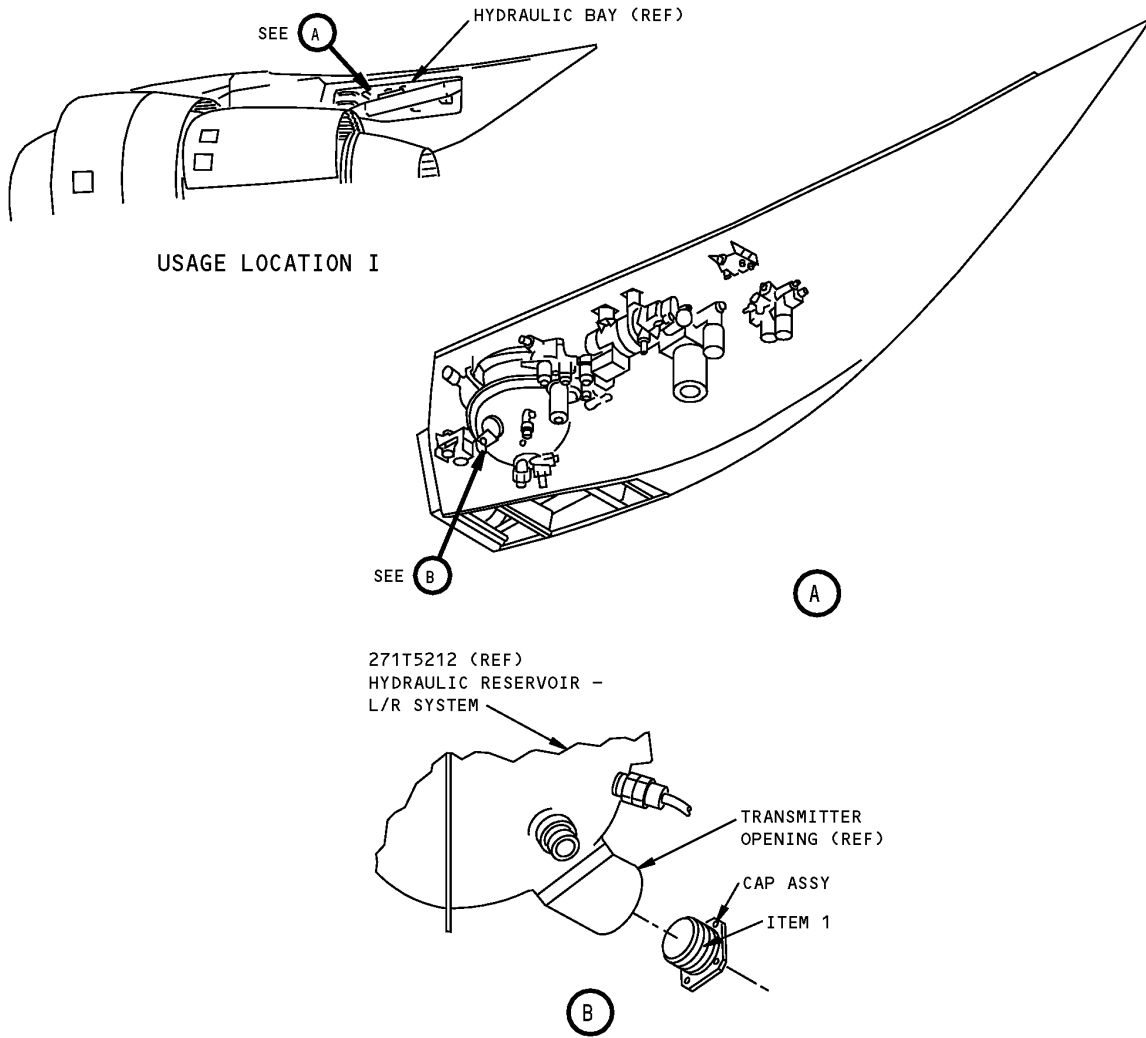
COMPONENT MAINTENANCE: YES

USAGE & DESCRIPTION: This tool is a machined steel plug that uses existing airplane fasteners to seal the hydraulic reservoir quantity transmitter during reservoir flushing.

WEIGHT: 1.5 lbs (0.7 kg)

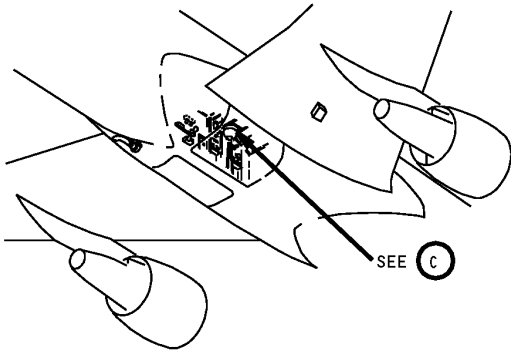
DIMENSIONS: 1.2 x 2.4 x 2.4 inches (30 x 60 x 60 mm)

**767
ILLUSTRATED TOOL AND EQUIPMENT MANUAL**



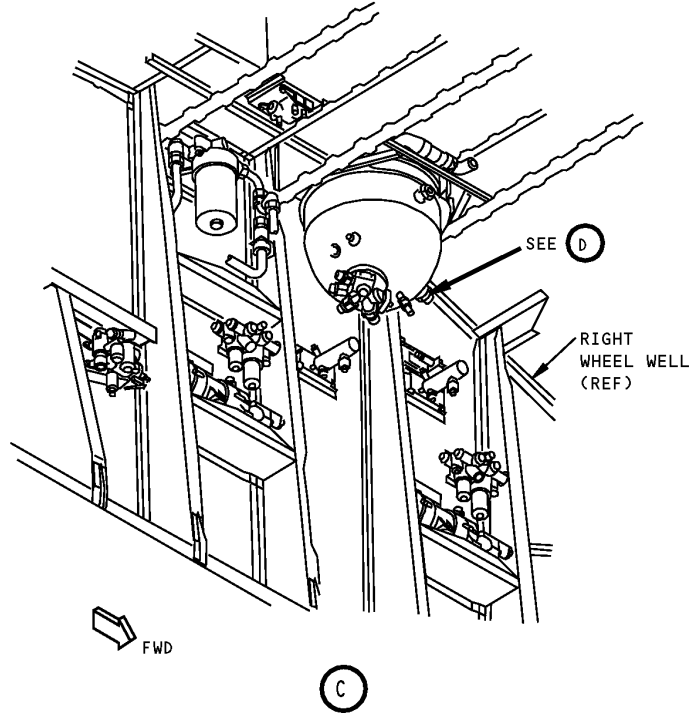
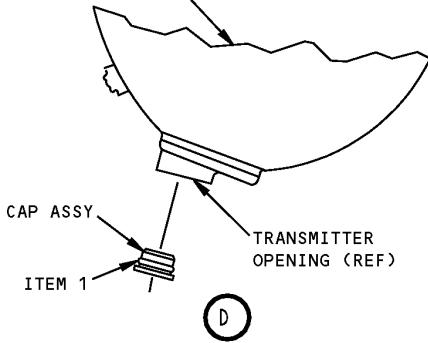
**Pressure Transmitter Mount Sealing Cap
Figure 1 (Sheet 1 of 2)**

ILLUSTRATED TOOL AND EQUIPMENT MANUAL



USAGE LOCATION II

271T0115 (REF)
HYDRAULIC RESERVOIR -
CENTER SYSTEM



**Pressure Transmitter Mount Sealing Cap
Figure 1 (Sheet 2 of 2)**

REPAIRABLE/REPLACEABLE PARTS			
ITEM NO.	PART NO.	NOMENCLATURE	VENDOR CODE
1	2-224E515-80	O-RING	V17506

ILLUSTRATED TOOL AND EQUIPMENT MANUAL

PART NUMBER: A29006-19

NAME: TEST BOX - PRESSURE/THERMAL SWITCH

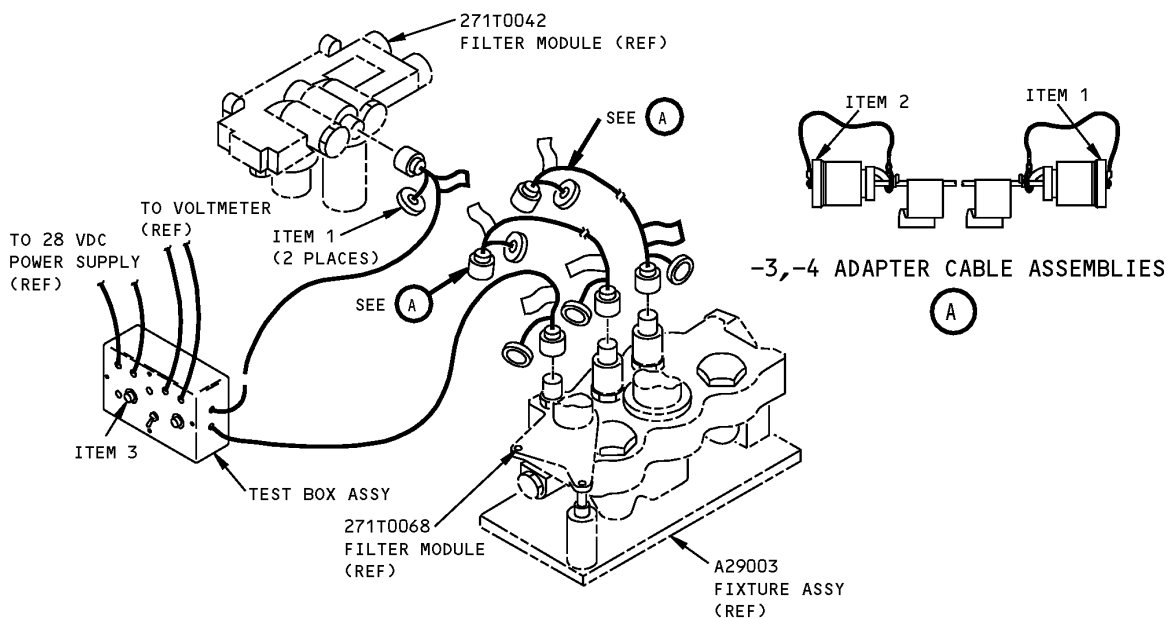
AIRPLANE MAINTENANCE: NO

COMPONENT MAINTENANCE: YES

USAGE & DESCRIPTION: This test box assembly consists of a test box and two adapter cables. The cables connect the hydraulic filter module pressure switches, 271T0042 and the 271T0068 thermal switch for functional testing. This tool is used with the A29003 hydraulic filter tool set.

WEIGHT: 8 lbs (3.6 kg)

DIMENSIONS: 3 x 10 x 12 inches (76 x 254 x 305 mm)



**Pressure/Thermal Switch Test Box
Figure 1**

REPAIRABLE/REPLACEABLE PARTS			
ITEM NO.	PART NO.	NOMENCLATURE	VENDOR CODE
1	MS27292-2	DUST CAP	
2	MS27294-2	DUST CAP	
3	MS25331-2-313	INDICATOR LIGHT ASSY	