

CHAPTER

30

**ICE AND RAIN
PROTECTION**



767

ILLUSTRATED TOOL AND EQUIPMENT MANUAL

CHAPTER 30
ICE AND RAIN PROTECTION

Subject/Page	Date	Subject/Page	Date	Subject/Page	Date
EFFECTIVE PAGES					
1	Apr 10/2008				
2	BLANK				
30-CONTENTS					
1	Apr 10/2006				
2	BLANK				
30-10-01					
1	Apr 10/2006				
2	Apr 10/2006				
30-40-01					
1	Apr 10/2006				
2	Apr 10/2006				
30-40-02					
1	Apr 10/2006				
2	Apr 10/2006				
30-40-03					
1	Apr 10/2006				
2	Apr 10/2006				

A = Added, R = Revised, O = Overflow, D = Deleted

30-EFFECTIVE PAGES

Page 1
Apr 10/2008

D634T501



767

ILLUSTRATED TOOL AND EQUIPMENT MANUAL

TABLE OF CONTENTS

<u>Subject</u>	<u>Title</u>	<u>Part No.</u>
30-	ICE AND RAIN PROTECTION	
30-10-01	PLUG EQUIPMENT - THERMAL ANTI-ICING DUCT, WING PRESSURE SWITCH TEST	A30002-1
30-40-01	TEST EQUIPMENT - WINDSHIELD RAIN REPELLENT SYSTEM	B30001-7
30-40-02	CLEANING TANK ASSEMBLY - WINDSHIELD RAIN REPELLENT SYSTEM	B30002-1
30-40-03	BREAKOUT BOX - VIEWPORT HEATER	A30003-1

30-CONTENTS

Page 1
Apr 10/2006

D634T501



767

ILLUSTRATED TOOL AND EQUIPMENT MANUAL

PART NUMBER: A30002-1

NAME: PLUG EQUIPMENT - THERMAL ANTI-ICING DUCT, WING PRESSURE SWITCH TEST

AIRPLANE MAINTENANCE: YES

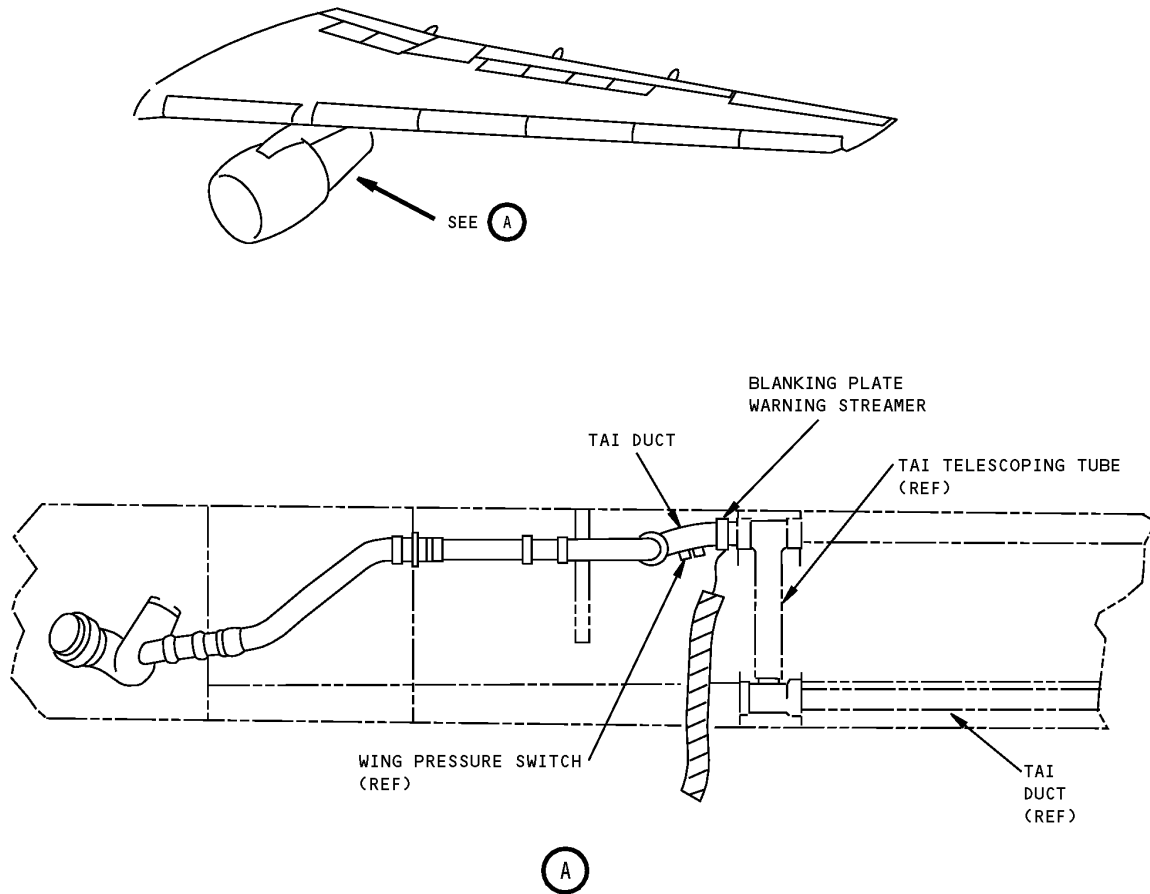
COMPONENT MAINTENANCE: NO

USAGE & DESCRIPTION: Used to block the thermal anti-ice duct downstream of the pressure switch to allow enough pressure upstream to actuate the overpressure switch.

WEIGHT: 0.2 lbs (0.09 kg)

DIMENSIONS: 3.5 inches dia x .050 inch gage

**767
ILLUSTRATED TOOL AND EQUIPMENT MANUAL**



**Wing Pressure Switch Test Thermal Anti-Icing Duct Plug Equipment
Figure 1**



767

ILLUSTRATED TOOL AND EQUIPMENT MANUAL

PART NUMBER: B30001-7

NAME: TEST EQUIPMENT - WINDSHIELD RAIN REPELLENT SYSTEM

AIRPLANE MAINTENANCE: YES

COMPONENT MAINTENANCE: NO

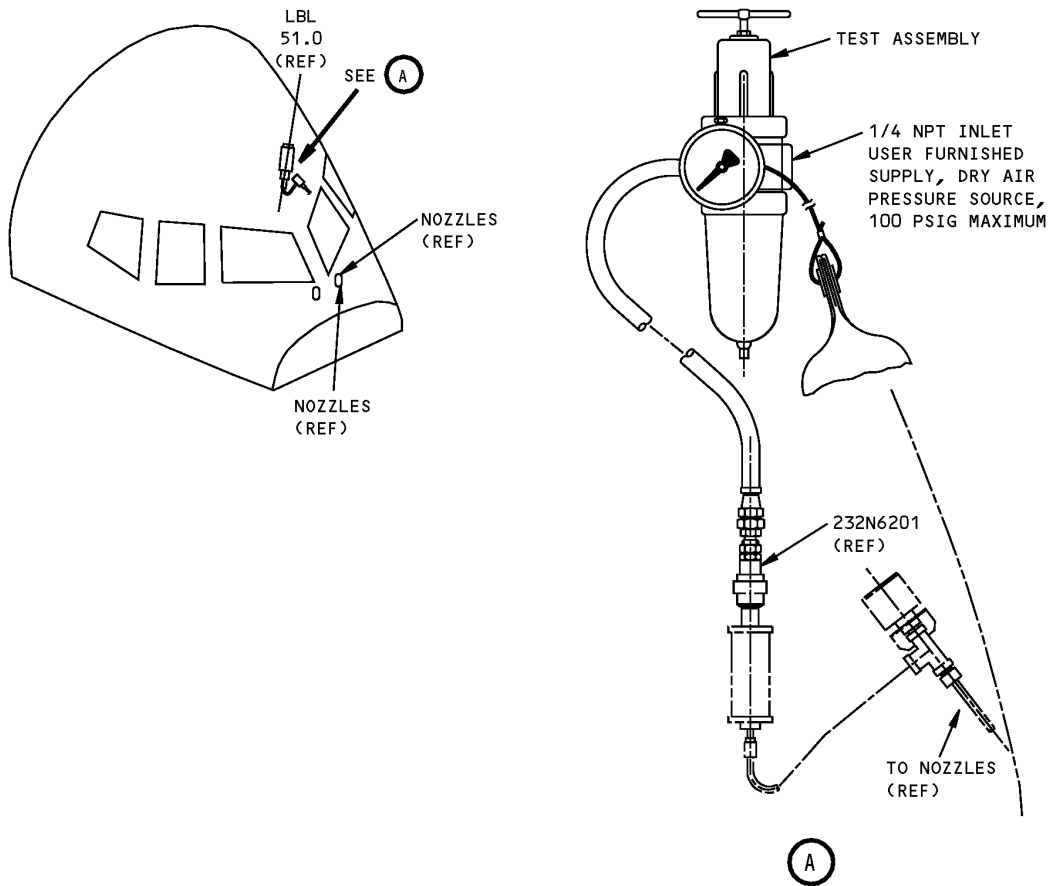
USAGE & DESCRIPTION: To functionally test the rain repellent system. Refer to AMM 30-43-00 for further usage instructions. This tool is used on 767 airplanes equipped with a rain repellent system. This tool is used on 767-200 and 767-300 line number 1 through 530. This tool consists of a test assembly and a box assembly.

WEIGHT: 8 lbs (3.6 kg)

DIMENSIONS: 8 x 8 x 11 inches (203 x 203 x 279 mm)

NOTE: B30001-7 supersedes B30001-1.

ILLUSTRATED TOOL AND EQUIPMENT MANUAL



**Windshield Rain Repellent System Test Equipment
Figure 1**



767

ILLUSTRATED TOOL AND EQUIPMENT MANUAL

PART NUMBER: B30002-1

NAME: CLEANING TANK ASSEMBLY - WINDSHIELD RAIN REPELLENT SYSTEM

AIRPLANE MAINTENANCE: YES

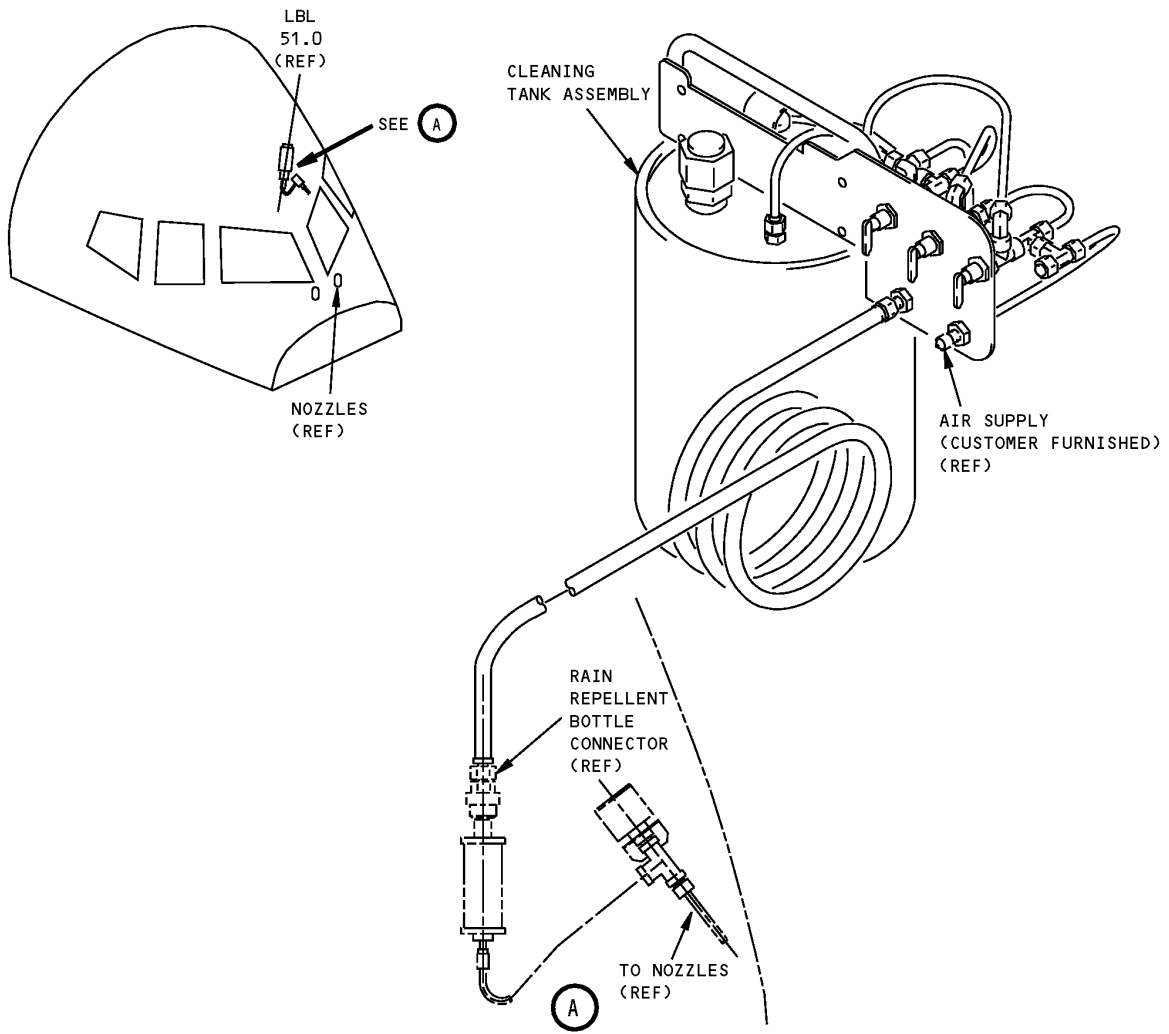
COMPONENT MAINTENANCE: NO

USAGE & DESCRIPTION: This tool is used on 767 airplanes equipped with a rain repellent system, to clean the rain repellent system using pressurized solvent. This tool is used on 767-200 and 767-300 line number 1 through 530. Refer to AMM 30-43-00 for further usage instructions. This tool consists of a tank assembly and a storage box assembly.

WEIGHT: 18.5 lbs (8.4 kg)

DIMENSIONS: 10 x 16 x 16 inches (254 x 406 x 406 mm)

ILLUSTRATED TOOL AND EQUIPMENT MANUAL



**Windshield Rain Repellent System Cleaning Tank Assembly
Figure 1**



767

ILLUSTRATED TOOL AND EQUIPMENT MANUAL

PART NUMBER: A30003-1

NAME: BREAKOUT BOX - VIEWPORT HEATER

AIRPLANE MAINTENANCE: YES

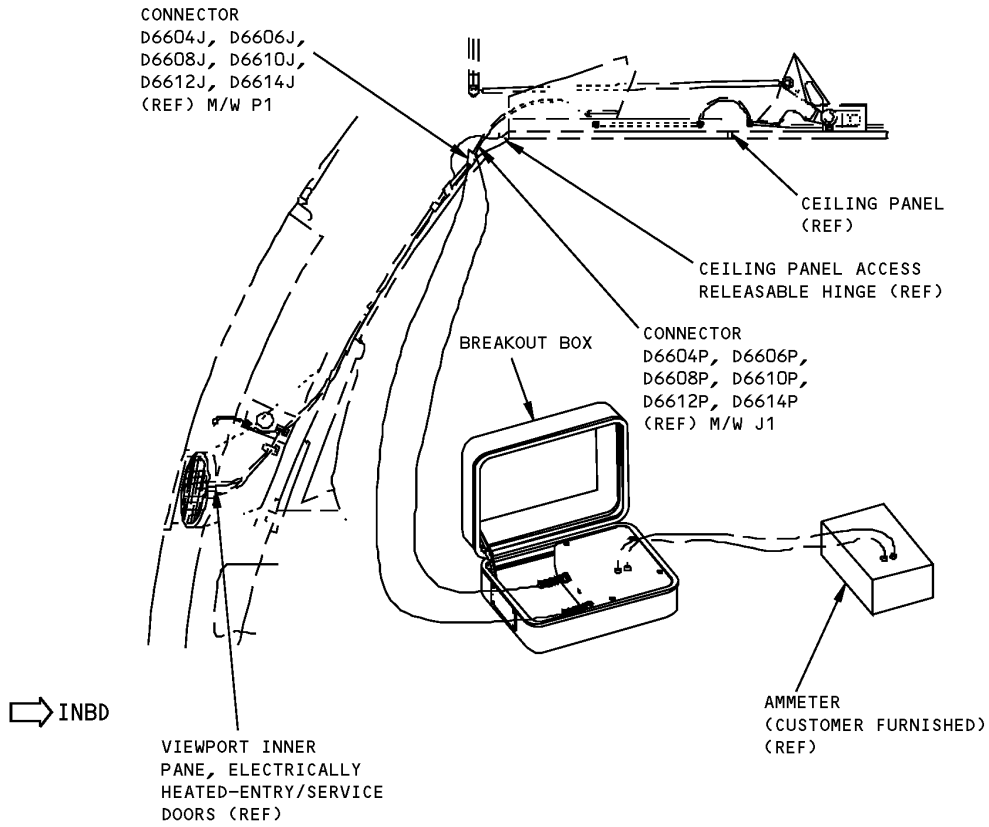
COMPONENT MAINTENANCE: NO

USAGE & DESCRIPTION: This breakout box is used to test the operation of the viewport heater by measuring the operating current. Refer to AMM 30-46-00 for further usage instructions. The breakout consists of a front panel, a terminal lug, 2 connectors, 2 strain relief, a carrying case, 2 flex strain relief, 4 panel mounting brackets, 2 banana jacks, 2 velcro straps, insulated wire and related hardware.

WEIGHT: 5 lbs (2.3 lbs)

DIMENSIONS: 6 x 10 x 13 inches (152 x 254 x 330 mm)

ILLUSTRATED TOOL AND EQUIPMENT MANUAL



LEFT FORWARD ENTRY DOOR SHOWN,
RIGHT FORWARD, MID AND AFT
(LEFT AND RIGHT) DOORS ARE SIMILAR

**Viewport Heater Breakout Box
Figure 1**