

**CHAPTER**

**38**

**WATER/WASTE**



767

ILLUSTRATED TOOL AND EQUIPMENT MANUAL

CHAPTER 38  
WATER/WASTE

Subject/Page	Date	Subject/Page	Date	Subject/Page	Date
EFFECTIVE PAGES		38-30-07 (cont)			
1	Apr 10/2008	2	Oct 10/2006		
2	BLANK	38-30-08			
38-CONTENTS		1	Oct 10/2006		
O 1	Apr 10/2008	2	Apr 10/2006		
2	BLANK	38-30-09			
38-10-01		1	Apr 10/2006		
1	Oct 10/2006	2	BLANK		
2	BLANK	38-30-10			
38-10-02		1	Apr 10/2006		
1	Apr 10/2006	2	Apr 10/2006		
2	Apr 10/2006	38-30-11			
38-10-03		1	Apr 10/2006		
1	Apr 10/2006	2	Apr 10/2006		
2	BLANK	38-30-12			
38-10-04		1	Oct 10/2007		
1	Apr 10/2006	2	BLANK		
2	BLANK	38-30-13			
38-30-01		O 1	Apr 10/2008		
1	Apr 10/2007	2	Oct 10/2007		
2	Apr 10/2006	O 3	Apr 10/2008		
3	Apr 10/2006	4	Oct 10/2007		
4	Apr 10/2006	5	Oct 10/2007		
38-30-02		6	Oct 10/2007		
1	Oct 10/2006	38-30-14			
2	BLANK	1	Apr 10/2006		
38-30-03		2	Apr 10/2006		
1	Apr 10/2006				
2	Apr 10/2006				
38-30-04					
1	Apr 10/2006				
2	Apr 10/2006				
38-30-05					
1	Oct 10/2007				
2	Oct 10/2007				
38-30-06					
1	Oct 10/2006				
2	BLANK				
38-30-07					
1	Oct 10/2006				

A = Added, R = Revised, O = Overflow, D = Deleted

# 38-EFFECTIVE PAGES



767

## ILLUSTRATED TOOL AND EQUIPMENT MANUAL

### TABLE OF CONTENTS

<u>Subject</u>	<u>Title</u>	<u>Part No.</u>
<b>38-</b>	<b>WATER/WASTE</b>	
38-10-01	TEST BOX - SIGNAL UNIT PRINTED CIRCUIT ASSEMBLY (PCA) POTABLE WATER	A38002-1
38-10-02	TEST CABLE - POTABLE WATER QUANTITY TRANSMITTER	A38010-1, -11
38-10-04	DOOR SWITCH ACTUATOR - POTABLE WATER SERVICE PANEL	A38014-1
38-30-01	PLUGS - VENT, VACUUM WASTE SYSTEM	A38001-16, -22
38-30-02	BLOCKAGE REMOVER - VACUUM TOILET	A38003-20
38-30-03	CLEANER EQUIPMENT - WASTE TANK SENSORS	A38004-29
38-30-04	ROOTER - WASTE WATER DRAIN LINE	A38005-1, -7
38-30-05	TESTER - TOILET VACUUM	A38006-1
38-30-06	PLUG - VACUUM WASTE SYSTEM	A38007-1
38-30-07	SENSOR CLEANER - LAVATORY WASTE TANK	A38009-1, -11
38-30-08	BLOCKAGE REMOVAL TOOL - VACUUM LAVATORY SYSTEM	G38004-10, -13
38-30-09	PLUG EQUIPMENT - DRAIN MAST, WASTE WATER	A38011-1
38-30-10	BLOCKAGE REMOVAL EQUIPMENT - VACUUM WASTE SYSTEM	G38006-1
38-30-11	TEST CHAMBER EQUIPMENT - LAVATORY SERVICE PANEL	G38005-1, -111, -61
38-30-12	DRAIN MAST PLUG - WASTE WATER	C38001-23
38-30-13	PUMP EQUIPMENT - VACUUM LAVATORY SYSTEM	A38012-1, -18, -31, -32, -39, -40
38-30-14	PRESSURIZATION EQUIPMENT - WASTE DRAIN SYSTEM	J38001-16

# 38-CONTENTS

Page 1  
Apr 10/2008

D634T501

## ILLUSTRATED TOOL AND EQUIPMENT MANUAL

**PART NUMBER: A38002-1**

**NAME:** TEST BOX - SIGNAL UNIT PRINTED CIRCUIT ASSEMBLY (PCA) POTABLE WATER

**AIRPLANE MAINTENANCE:** NO

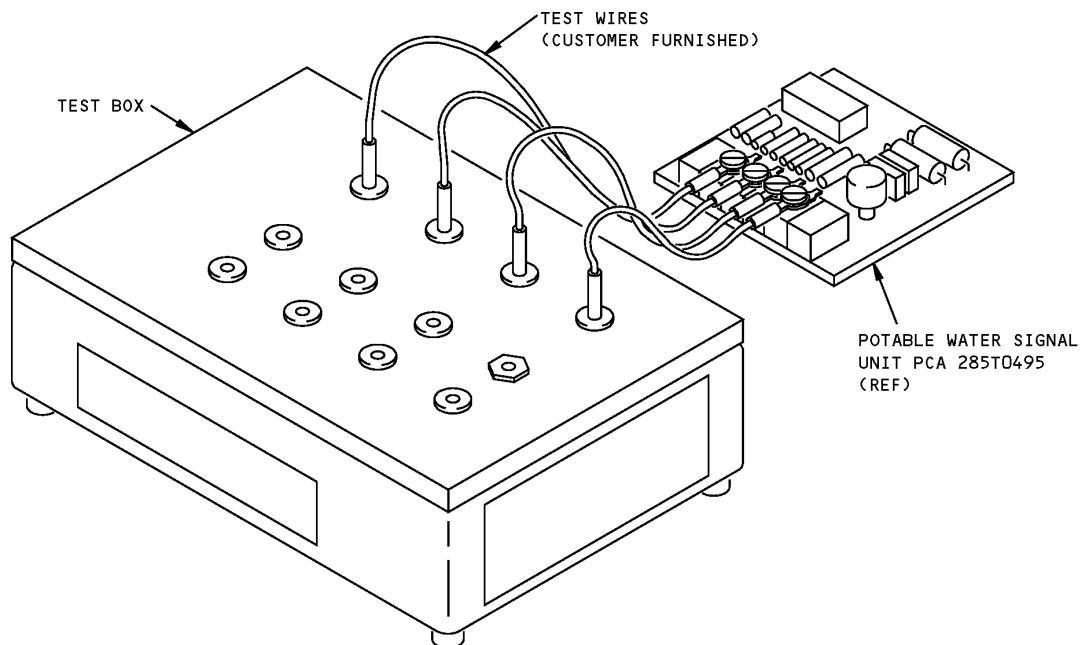
**COMPONENT MAINTENANCE:** YES

**USAGE & DESCRIPTION:** The A38002 drawing has been transferred to BAE Systems and will no longer be revised by Boeing. The A38002 inclusion in the 767 ITEM is for information and historical purposes only.

The A38002-1 test box is used on all 767 airplanes except the 767-300F. A38002 is a breakout box which is used during functional testing of the potable water signal unit. Refer to CMM 38-14-51 for complete usage instructions. The A38002-1 consists of only a test box

**WEIGHT:** 5 lbs (2.3 kg)

**DIMENSIONS:** 4 x 6 x 8 inches (102 x 152 x 203 mm)



**Signal Unit PCA Potable Water Test Box  
Figure 1**



767

**ILLUSTRATED TOOL AND EQUIPMENT MANUAL**

**PART NUMBER: A38010-1, -11**

**NAME:** TEST CABLE - POTABLE WATER QUANTITY TRANSMITTER

**AIRPLANE MAINTENANCE:** YES

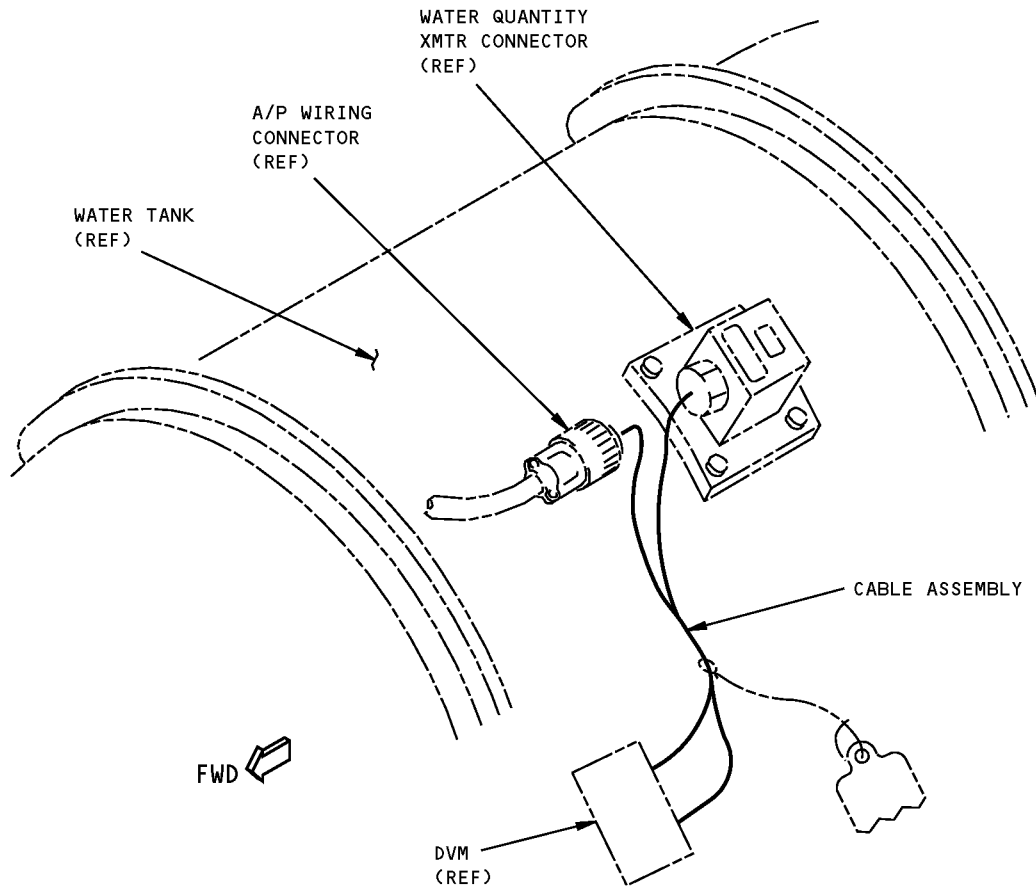
**COMPONENT MAINTENANCE:** NO

**USAGE & DESCRIPTION:** The A38010-1 or -11 is used on all 767 airplanes except the 767-300F. A38010 is used to provide electrical access to the water tank quantity transmitter for calibration. Refer to AMM 38-14-00 for complete usage instructions. A38010-1 consists of an A38010-2 cable assembly contained in a storage box. A38010-11 consists of an A38010-14 cable assembly contained in a storage box.

**WEIGHT:** 5 lbs (2.3 kg)

**DIMENSIONS:** 5 x 5 x 12 inches (127 x 127 x 305 mm)

**NOTE:** A38010-11 replaces A38010-1 for future procurement.



**Potable Water Quantity Transmitter Test Cable**  
**Figure 1**



767

**ILLUSTRATED TOOL AND EQUIPMENT MANUAL**

**PART NUMBER: B21004-91 WAS DELETED**

**ILLUSTRATED TOOL AND EQUIPMENT MANUAL**

**PART NUMBER: A38014-1**

**NAME:** DOOR SWITCH ACTUATOR - POTABLE WATER SERVICE PANEL

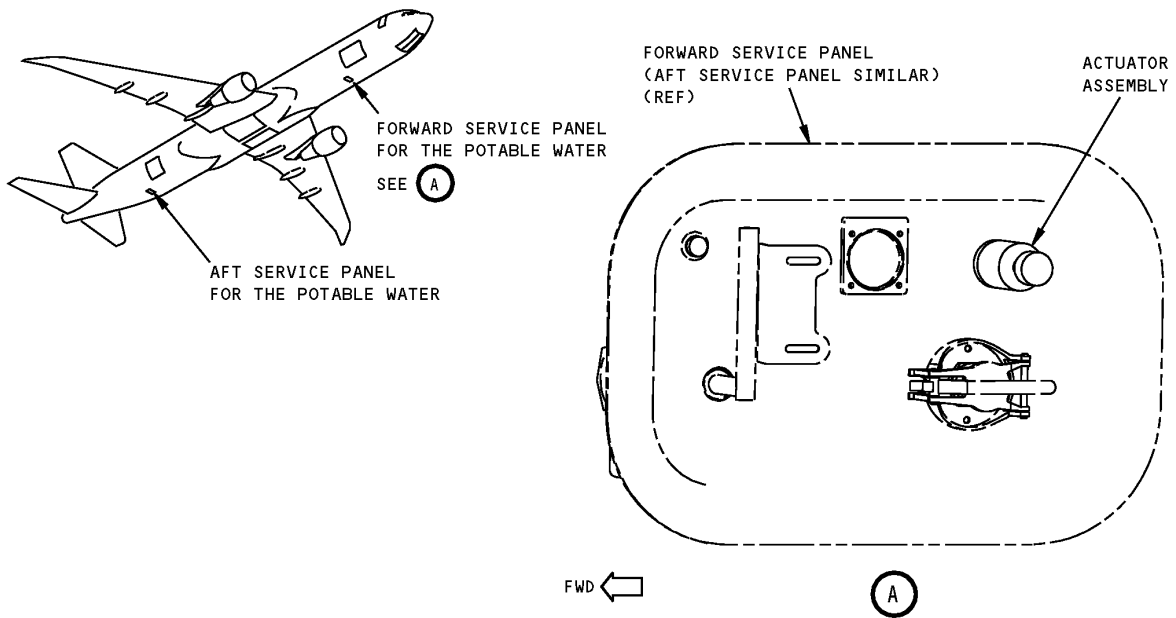
**AIRPLANE MAINTENANCE:** YES

**COMPONENT MAINTENANCE:** NO

**USAGE & DESCRIPTION:** The A38014-1 door switch actuator is used on 767-400ER airplanes. A38014 is used to actuate and deactivate the potable water service door switch and also during the potable water system test to pressurize the system. Refer to AMM 38-14-01 for complete usage instructions. This tool consists of an A38014-2 actuator assembly contained in a storage box.

**WEIGHT:** 5 lbs (2.3 kg)

**DIMENSIONS:** 1 x 1 x 3 inches (51 x 51 x 76 mm)



**Potable Water Service Panel Door Switch Actuator  
Figure 1**





767

## ILLUSTRATED TOOL AND EQUIPMENT MANUAL

**PART NUMBER: A38001-16, -22**

**NAME:** PLUGS - VENT, VACUUM WASTE SYSTEM

**AIRPLANE MAINTENANCE:** YES

**COMPONENT MAINTENANCE:** NO

**USAGE & DESCRIPTION:** The A38001-16 or A38001-22 vent plugs are used on all 767 airplanes except the 767-300F. The A38001 plugs are used to plug the vacuum waste system and provide a connection for leak detection equipment. A vacuum source, 18 inches Hg, is required with this tool. This can be provided by either a commercially available vacuum pump or by part number A38001-25 vacuum source. Refer to AMM 38-32-00 and current A38001 drawing for additional usage instructions. Both the A38001-16 and the A38001-22 contain the same components, except that the -22 includes a usage placard with the storage box.

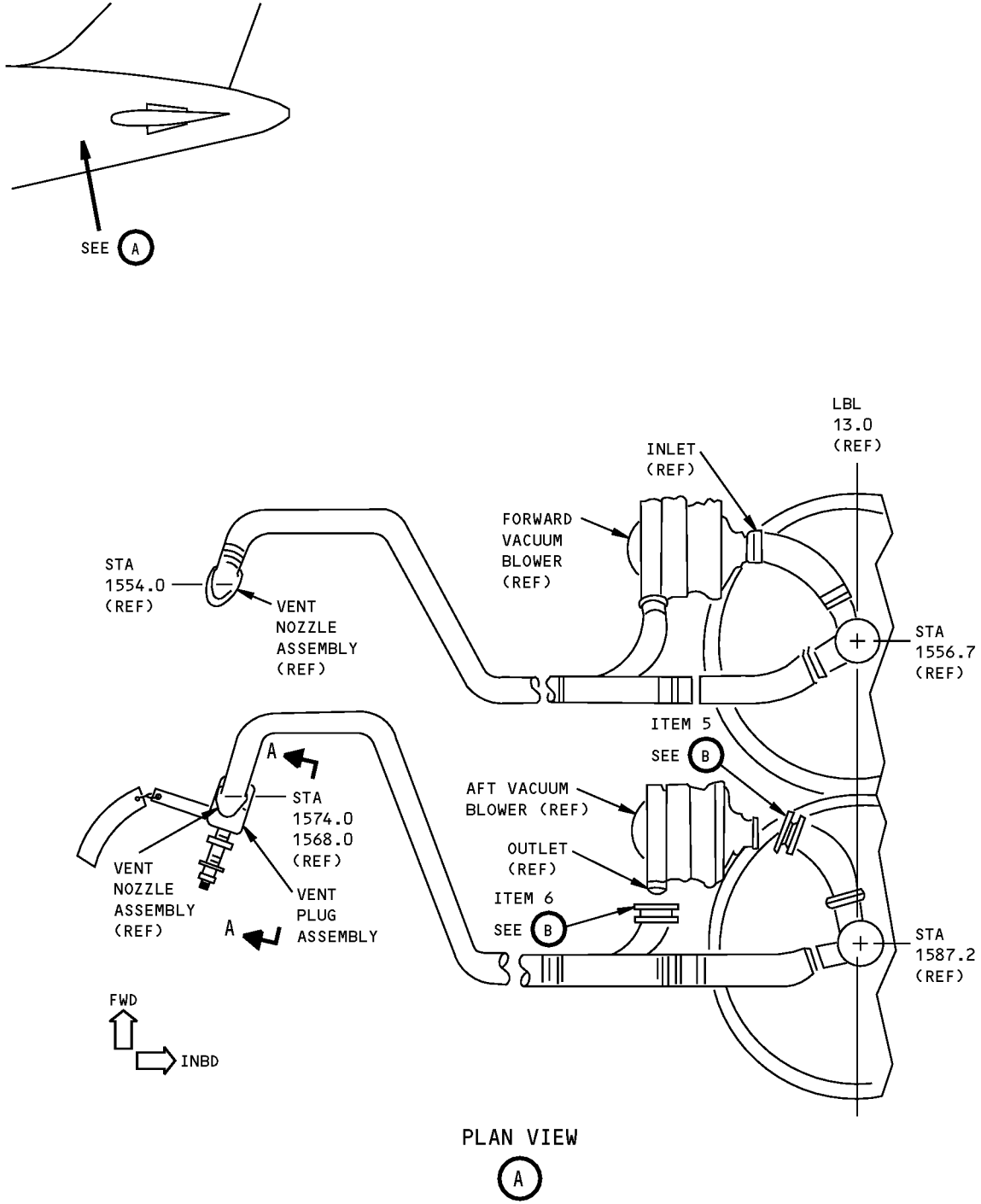
<b>A38001-16 OR A38001-22</b>		
<b>QUANTITY</b>	<b>NOMENCLATURE</b>	<b>PART NUMBER</b>
1	OUTLET PLUG	A38001-2
1	INLET PLUG	A38001-3
1	VENT PLUG ASSEMBLY	A38001-4
1	STORAGE BOX	

**WEIGHT:** 11 lbs (5 kg)

**DIMENSIONS:** 5 x 9 x 15 inches (127 x 229 x 381 mm)

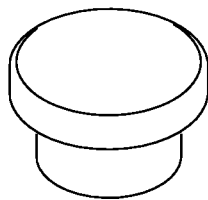
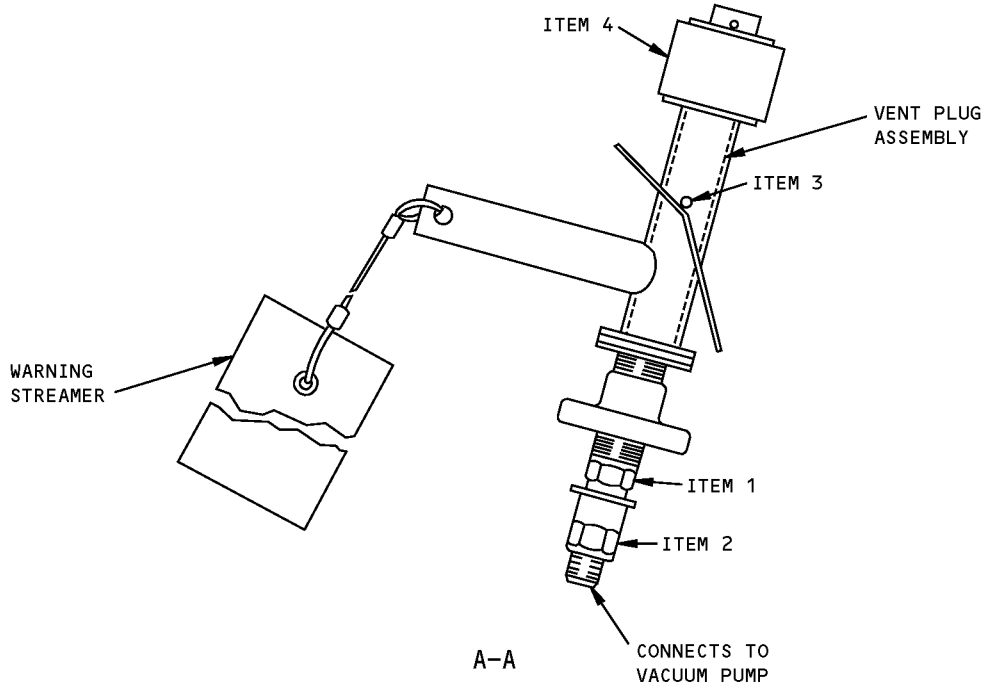
**NOTE:** A38001-16 supersedes A38001-1.  
A38001-22 replaces A38001-16 for future procurement.

**ILLUSTRATED TOOL AND EQUIPMENT MANUAL**



**Vacuum Waste System Vent Plugs**  
**Figure 1 (Sheet 1 of 2)**

**767  
ILLUSTRATED TOOL AND EQUIPMENT MANUAL**



ITEMS 5 AND 6



**Vacuum Waste System Vent Plugs  
Figure 1 (Sheet 2 of 2)**



767

ILLUSTRATED TOOL AND EQUIPMENT MANUAL

REPAIRABLE/REPLACEABLE PARTS			
ITEM NO.	PART NO.	NOMENCLATURE	VENDOR CODE
1	VEAN 6-6M	VALVED NIPPLE	V78357
2	VEAC 6-6M	VALVE COUPLER	V78357
3	MS16562-234	SPRING PIN	
4	A38001-15	STOP	
5	A38001-3	INLET PLUG	
6	A38001-2	OUTLET PLUG	



767

## ILLUSTRATED TOOL AND EQUIPMENT MANUAL

**PART NUMBER: A38003-20**

**NAME:** BLOCKAGE REMOVER - VACUUM TOILET

**AIRPLANE MAINTENANCE:** YES

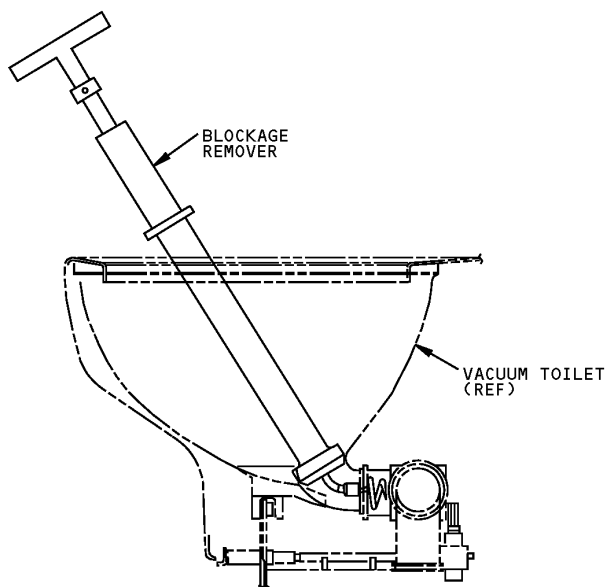
**COMPONENT MAINTENANCE:** NO

**USAGE & DESCRIPTION:** The A38003-20 blockage remover is used on all 767 airplanes except the 767-300F. A38003 is used to remove an obstruction between the toilet bowl and the diaphragm valve. Refer to AMM 38-32-00 and current A38003 drawing for complete usage instructions. A38003-20 consists of a A38003-21 removal assembly contained in a storage box.

**WEIGHT:** 4 lbs (1.8 kg)

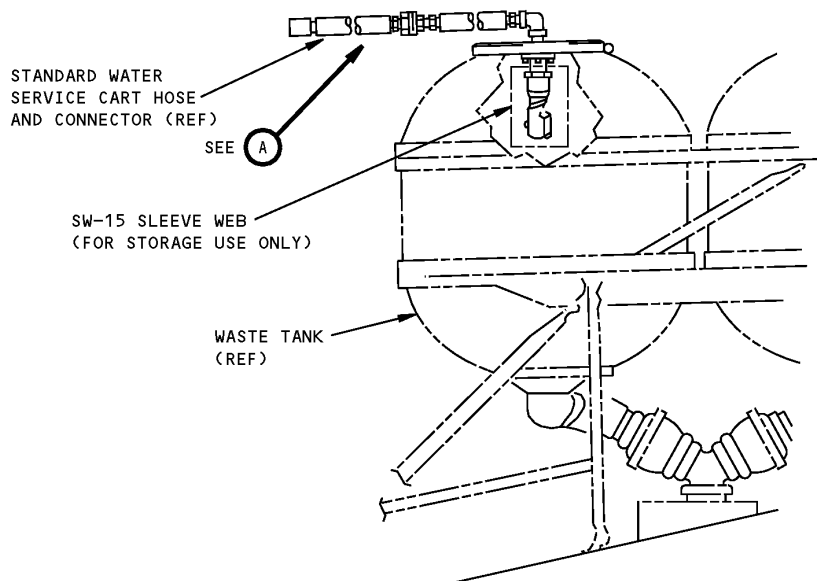
**DIMENSIONS:** 3 x 5 x 27 inches (76 x 127 x 686 mm)

**NOTE:** A38003-20 supersedes A38003-14.  
A38003-14 supersedes A38003-1 and A38008-1.

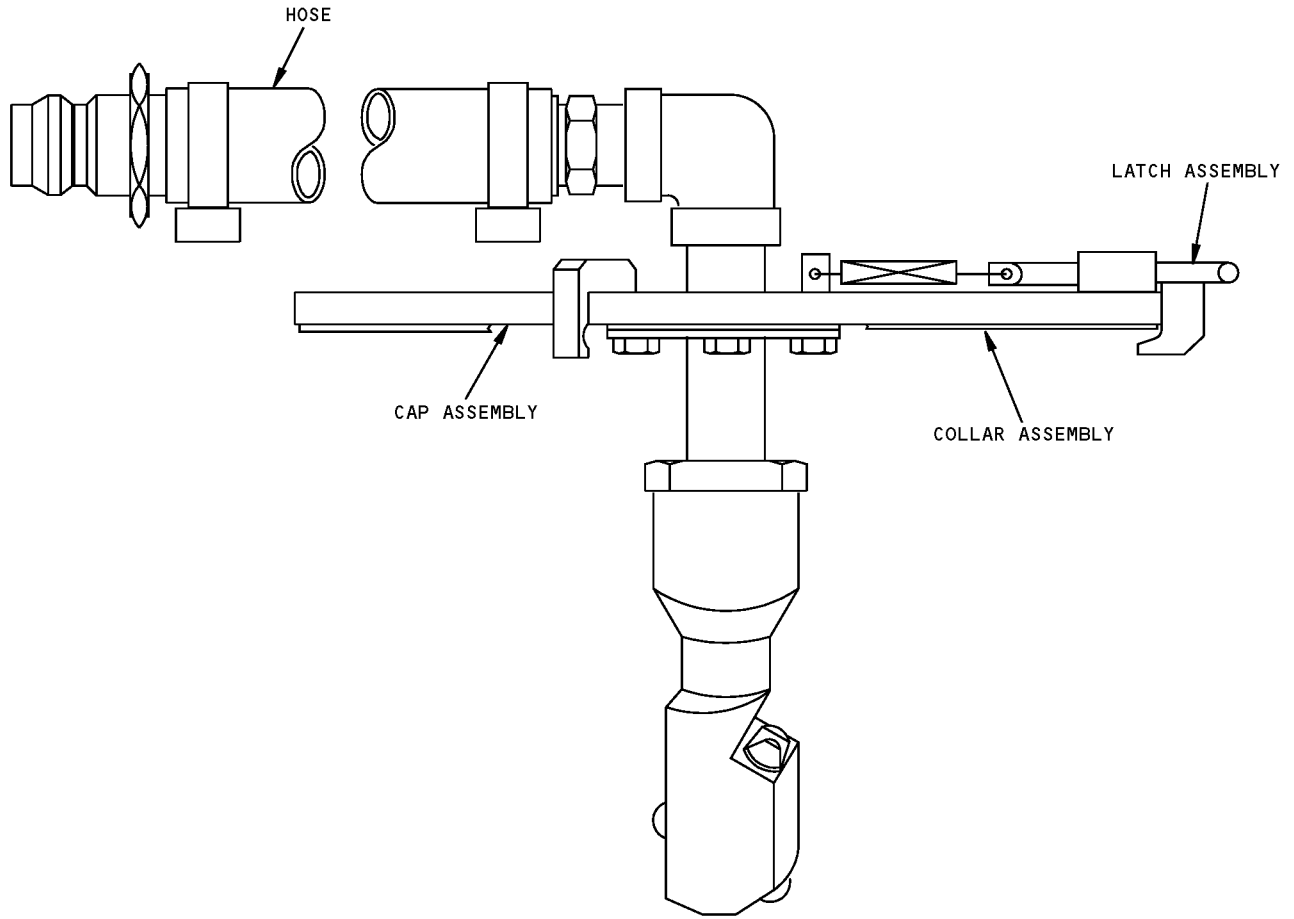


**Vacuum Toilet Blockage Remover  
Figure 1**

## ILLUSTRATED TOOL AND EQUIPMENT MANUAL

**PART NUMBER: A38004-29****NAME:** CLEANER EQUIPMENT - WASTE TANK SENSORS**AIRPLANE MAINTENANCE:** YES**COMPONENT MAINTENANCE:** NO**USAGE & DESCRIPTION:** The A38004-29 cleaner equipment is used on all 767 airplanes except the 767-300F. A38004 is used to clean the tank sensors located inside of the waste tanks. Refer to AMM 38-32-11 for complete usage instructions. This tool consists of a A38004-30 sprayer assembly contained in a storage box.**WEIGHT:** 21 lbs (10 kg)**DIMENSIONS:** 14 x 14 x 16 inches (356 x 356 x 406 mm)**NOTE:** A38004-29 supersedes A38004-15.  
A38009 replaces A38004 for future procurement.

**Waste Tank Sensors Cleaner Equipment  
Figure 1 (Sheet 1 of 2)**



SPRAYER ASSEMBLY

(A)

Waste Tank Sensors Cleaner Equipment  
Figure 1 (Sheet 2 of 2)



767

## ILLUSTRATED TOOL AND EQUIPMENT MANUAL

PART NUMBER: A38005-1, -7

**NAME:** ROOTER - WASTE WATER DRAIN LINE

**AIRPLANE MAINTENANCE:** YES

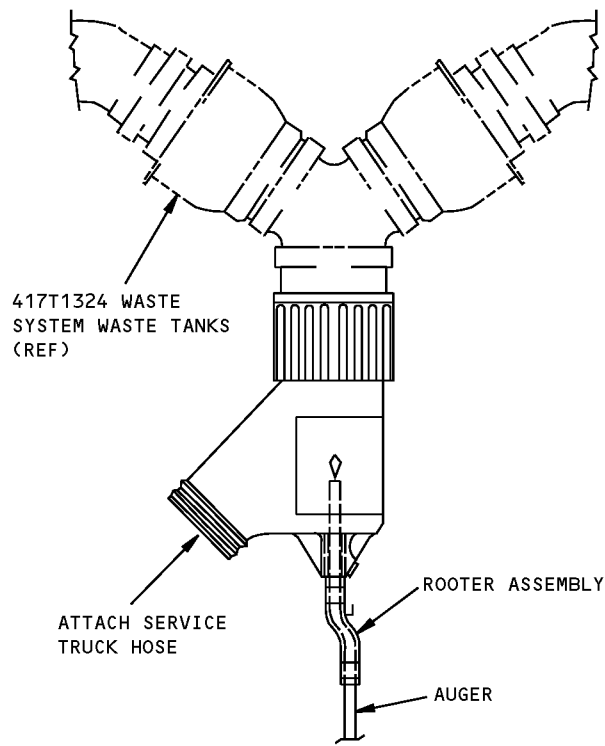
**COMPONENT MAINTENANCE:** NO

**USAGE & DESCRIPTION:** The A38005-1 or -7 roter is used on all 767 airplanes except the 767-300F. The A38005 is used to remove a blockage from the drain lines to the waste tanks. Refer to AMM 38-32-00 for complete usage instructions. The A38005 -1 and -7 rooters are equal options. A38005-1 contains an aluminum coupling. A38005-7 contains a plastic coupling. The A38005-1 roter consists of an A38005-2 roter assembly contained in a storage box. The A38005-7 roter consists of an A38005-8 roter assembly contained in a storage box.

**WEIGHT:** 10 lbs (4.5 kg)

**DIMENSIONS:** 10 x 16 x 30 inches (254 x 406 x 762 mm)





**Waste Water Drain Line Rooter  
Figure 1**



767

## ILLUSTRATED TOOL AND EQUIPMENT MANUAL

**PART NUMBER: A38006-1**

**NAME:** TESTER - TOILET VACUUM

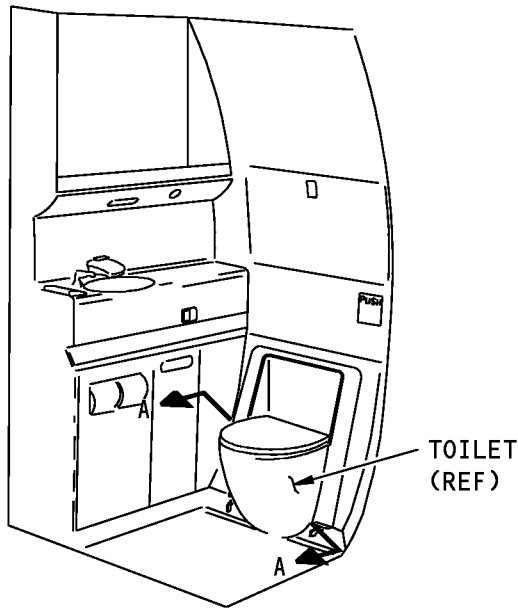
**AIRPLANE MAINTENANCE:** YES

**COMPONENT MAINTENANCE:** NO

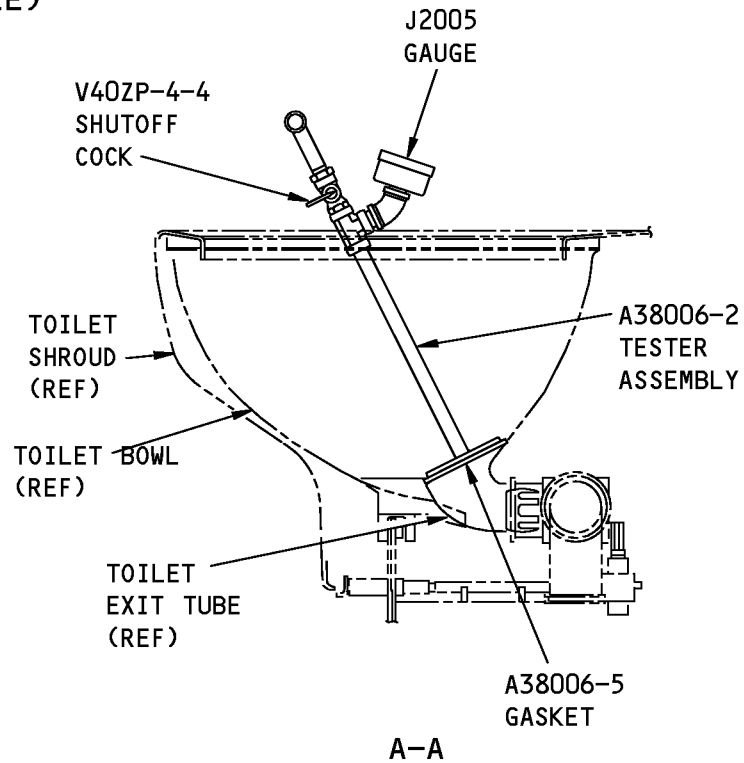
**USAGE & DESCRIPTION:** The A38006-1 tester is used on all 767 airplanes except the 767-300F. A38006 is used to determine the vacuum (in inches of mercury) in the toilet vacuum lines. Refer to AMM 38-32-00 and current A38006 drawing for complete usage instructions. A38006-1 consists of a A38006-2 tester assembly contained in a storage box.

**WEIGHT:** 3 lbs (1.4 kg)

**DIMENSIONS:** 6 x 6 x 17 inches (152 x 152 x 432 mm)



**LAVATORY  
(EXAMPLE)**



**Toilet Vacuum Tester  
Figure 1**

**ILLUSTRATED TOOL AND EQUIPMENT MANUAL**

**PART NUMBER: A38007-1**

**NAME:** PLUG - VACUUM WASTE SYSTEM

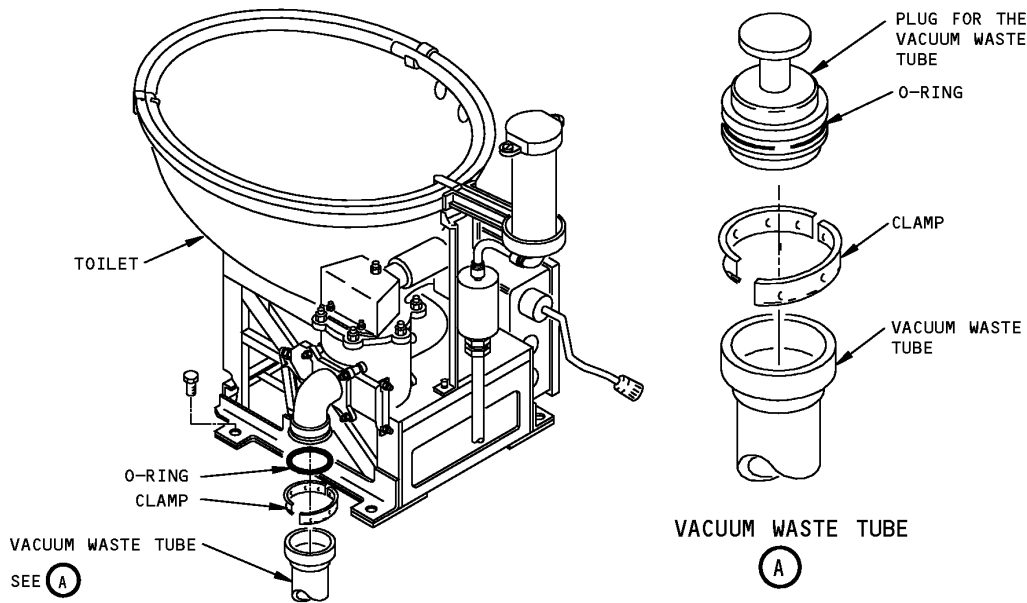
**AIRPLANE MAINTENANCE:** YES

**COMPONENT MAINTENANCE:** NO

**USAGE & DESCRIPTION:** The A38007-1 plug is used on all 767 airplanes except the 767-300F. A38007 is used to plug the vacuum waste line during maintenance when a toilet is removed for repairs. Refer AMM 38-32-01 and current A38007 drawing for complete usage instructions. The A38007-1 consists of a A38007-2 plug assembly contained in a storage box.

**WEIGHT:** 1 lb (0.5 kg)

**DIMENSIONS:** 2 x 3 x 3 inches (51 x 76 x 76 mm)



**Vacuum Waste System Plug  
Figure 1**



767

**ILLUSTRATED TOOL AND EQUIPMENT MANUAL**

**PART NUMBER: A38009-1, -11**

**NAME:** SENSOR CLEANER - LAVATORY WASTE TANK

**AIRPLANE MAINTENANCE:** YES

**COMPONENT MAINTENANCE:** NO

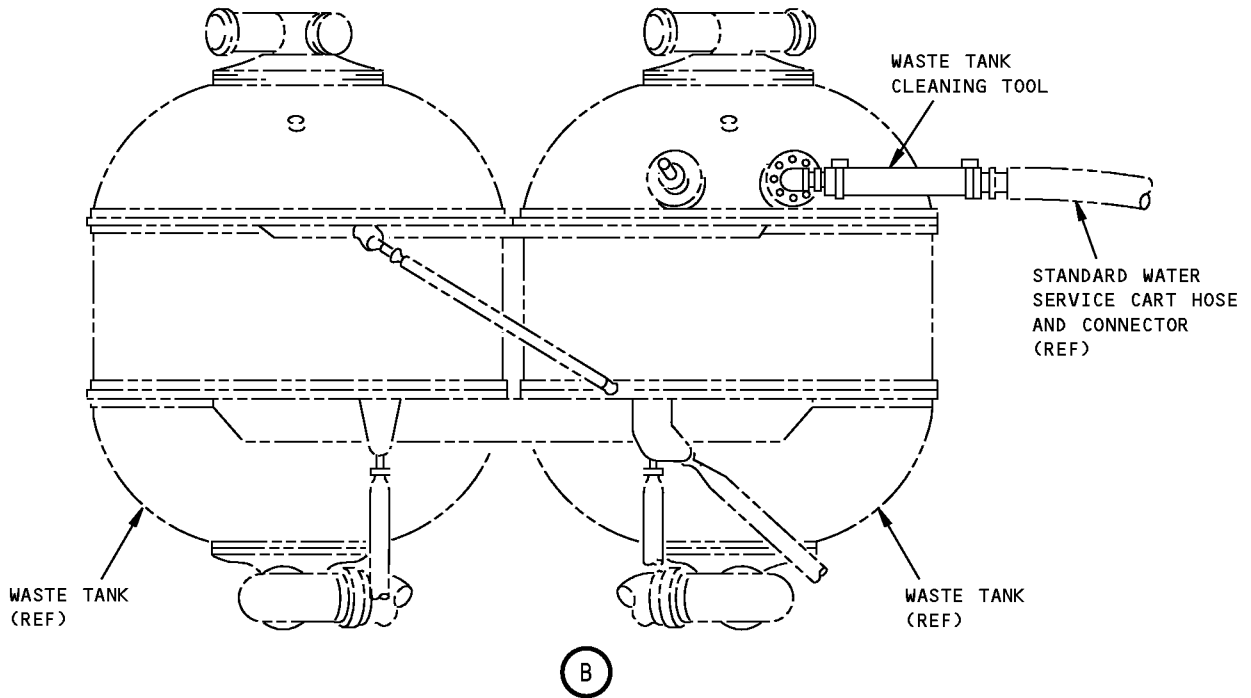
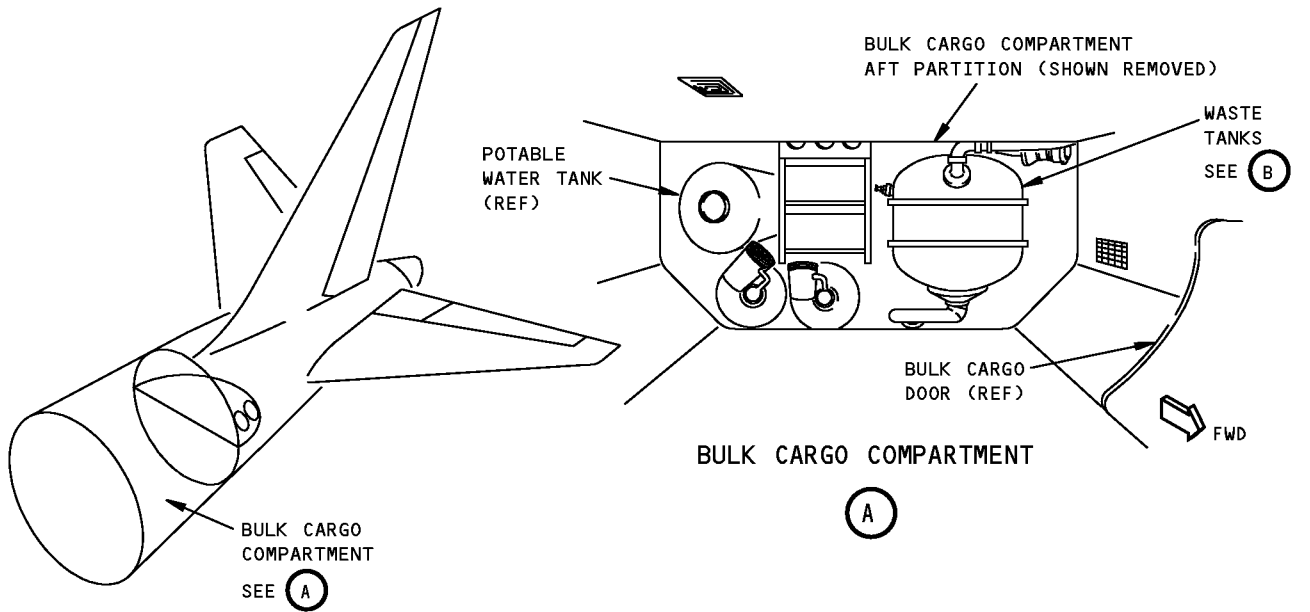
**USAGE & DESCRIPTION:** The A38009-1 sensor cleaner is used on all 767 airplanes except the 767-300F and 767-400ER. The A38009-11 sensor cleaner is used on all 767 airplanes except the 767-300F. A38009 is used to clean the tank sensors mounted inside of the waste tank. Refer to AMM 38-32-11 and current A38009 drawing for complete usage instructions. A38009-1 is used on flange mount sensors. The "Vee" clamp mount sensor is added per PRR B11783. A38009-11 is used on "Vee" clamp mount sensors. The A38009-1 tool consists of a A38009-2 hose assembly contained in a storage box. The A38009-11 tool consists of a A38009-12 hose assembly contained in a storage box.

**WEIGHT:** 20 lbs (9 kg)

**DIMENSIONS:** 5 x 14 x 16 inches (127 x 356 x 406 mm)

**NOTE:** A38009 replaces A38004 for future procurement.  
A39009-11 supersedes A38009-1 for future procurement.

**ILLUSTRATED TOOL AND EQUIPMENT MANUAL**



**Lavatory Waste Tank Sensor Cleaner  
Figure 1**



767

## ILLUSTRATED TOOL AND EQUIPMENT MANUAL

**PART NUMBER: G38004-10, -13**

**NAME:** BLOCKAGE REMOVAL TOOL - VACUUM LAVATORY SYSTEM

**AIRPLANE MAINTENANCE:** YES

**COMPONENT MAINTENANCE:** NO

**USAGE & DESCRIPTION:** The G38004-10 or -13 blockage removal tool is used on all 767 airplanes except for the 767-300F. G38004 is used to clear blockages in the 2.0 inch plumbing of the vacuum lavatory system (and it is not used on the toilets or the 4.0 inch lavatory service plumbing). Refer to AMM 38-32-00 and current G38004 drawing for complete usage instructions. The G38004 blockage removal tools consists of:

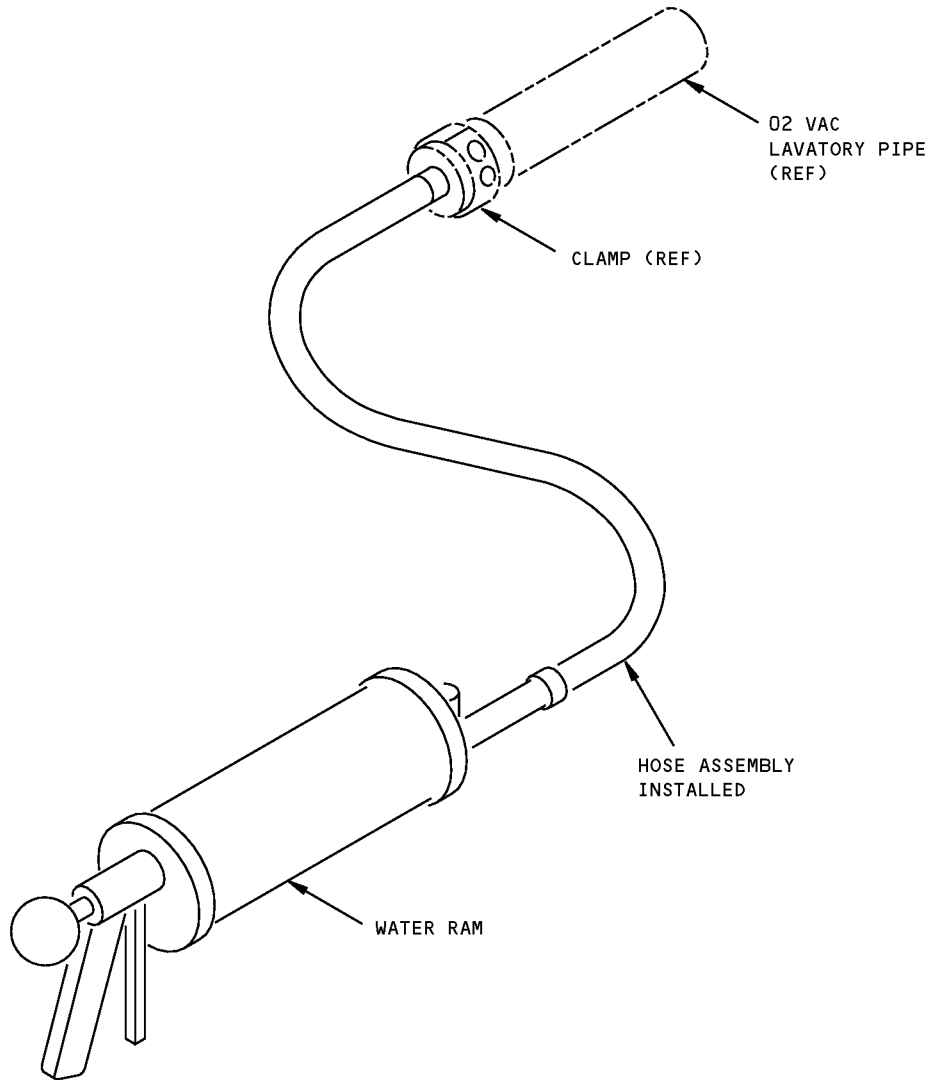
G38004-10		
QUANTITY	NOMENCLATURE	PART NUMBER
1	BLOCKAGE REMOVAL TOOL ASSEMBLY	G38004-11
1	STORAGE BOX	

G38004-13		
QUANTITY	NOMENCLATURE	PART NUMBER
1	BLOCKAGE REMOVAL TOOL ASSEMBLY	G38004-14
1	STORAGE BOX	

**WEIGHT:** G38004-10 - 12 lbs (5 kg)  
G38004-13 - 14 lbs (6 kg)

**DIMENSIONS:** G38004-10 - 6 x 10 x 33 (254 x 406 x 838 mm)  
G38004-13 - 16 x 17 x 33 (406 x 432 x 838 mm)

**NOTE:** G38004-10 supersedes G38004-6.  
G38004-13 replaces G38004-10 for future procurement.



**Vacuum Lavatory System Blockage Removal Tool**  
**Figure 1**



**ILLUSTRATED TOOL AND EQUIPMENT MANUAL**

**PART NUMBER: A38011-1**

**NAME:** PLUG EQUIPMENT - DRAIN MAST, WASTE WATER

**AIRPLANE MAINTENANCE:** YES

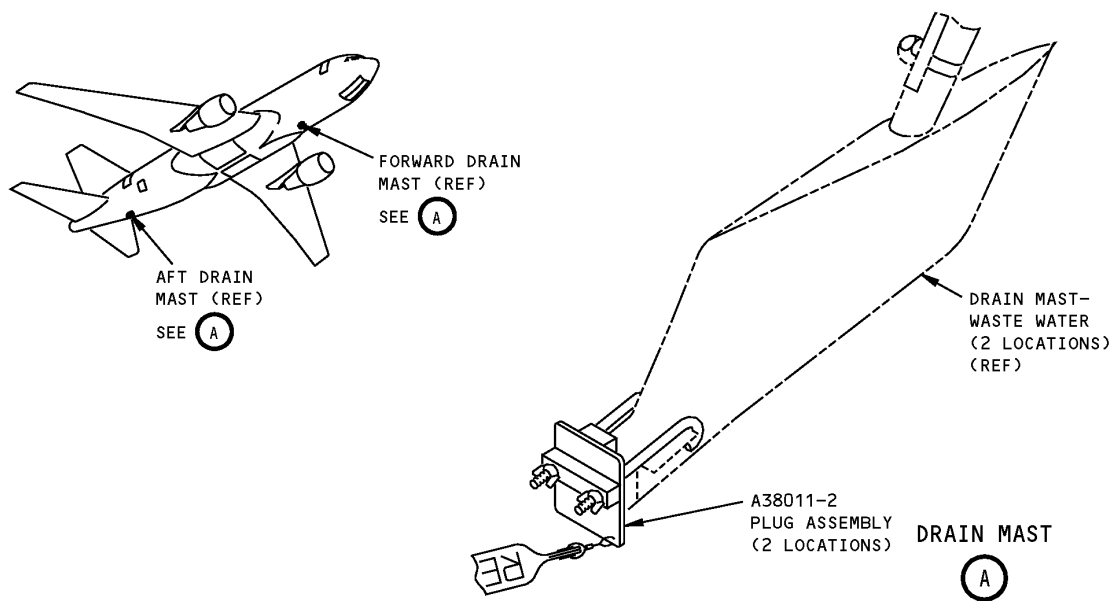
**COMPONENT MAINTENANCE:** NO

**USAGE & DESCRIPTION:** The A38011-1 plug equipment is used on all 767 airplanes. A38011 is used to plug the waste water drain masts during drain line blockage removal or cleaning. Refer to AMM 38-10-00, AMM 38-31-00 and AMM 38-31-01 for complete usage instructions on 767 passenger airplanes. Refer to AMM 38-31-60 for complete usage instructions for 767-300F airplanes. A38011-1 consists of two A38011-2 plug assemblies contained in a storage box.

**WEIGHT:** 2 lbs (1 kg)

**DIMENSIONS:** 4 x 6 x 6 inches (102 x 152 x 152 mm)

**NOTE:** C38001 replaces A38011 for future procurement.



**Waste Water Drain Mast Plug Equipment  
Figure 1**



767

## ILLUSTRATED TOOL AND EQUIPMENT MANUAL

**PART NUMBER: G38006-1**

**NAME:** BLOCKAGE REMOVAL EQUIPMENT - VACUUM WASTE SYSTEM

**AIRPLANE MAINTENANCE:** YES

**COMPONENT MAINTENANCE:** NO

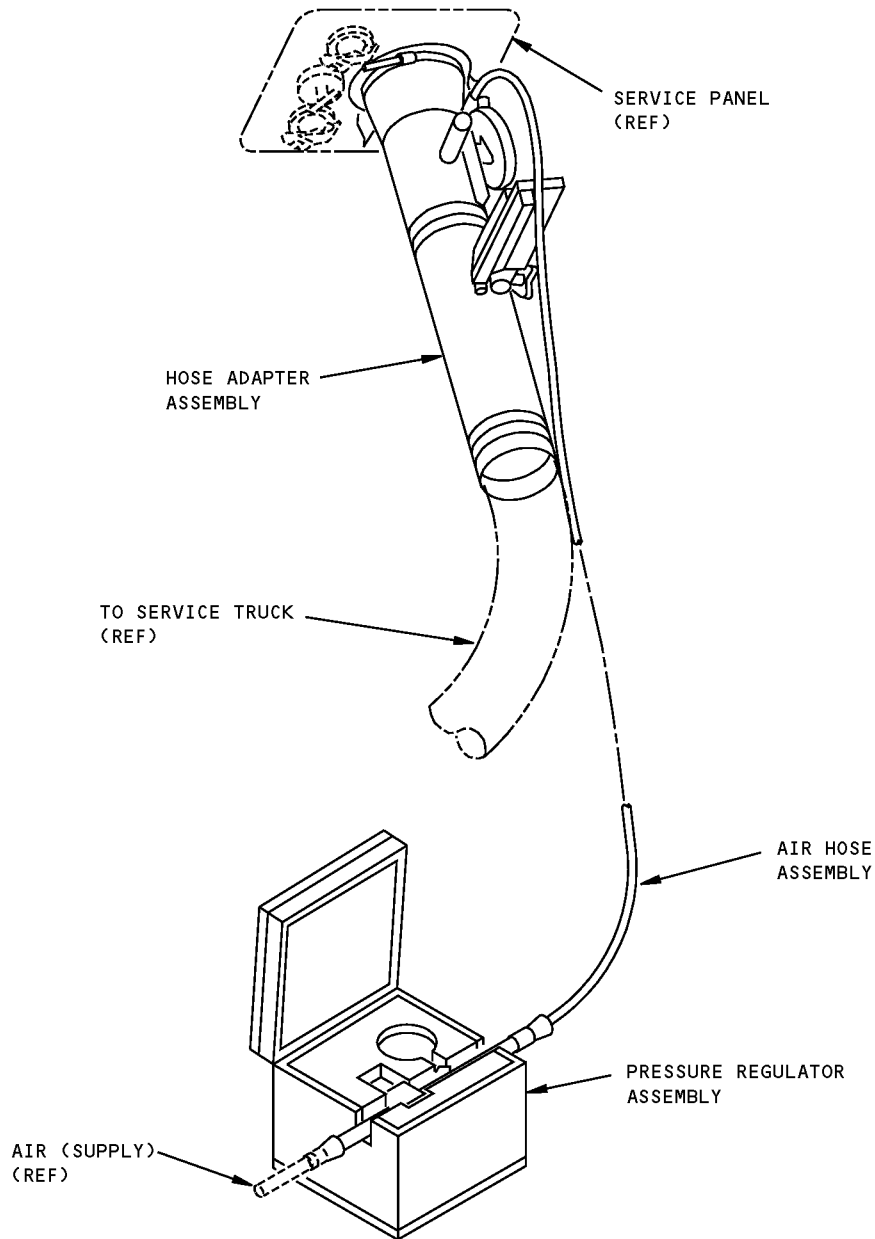
**USAGE & DESCRIPTION:** The G38006-1 blockage removal equipment is used on all 767 airplanes except 767-300F. G38006 is used to clear blockages between the service panel and the waste tank(s) in the vacuum waste system. Refer to AMM 38-32-00 for complete usage instructions.

G38006-1		
QUANTITY	NOMENCLATURE	PART NUMBER
1	HOSE ADAPTER ASSEMBLY	G38006-2
1	PRESSURE REGULATOR ASSEMBLY	G38006-3
1	AIR HOSE ASSEMBLY	G38006-4
1	STORAGE BOX	

**WEIGHT:** 10 lbs (4.5 kg)

**DIMENSIONS:** 12 x 24 x 33 inches (305 x 610 x 838 mm)

**767**  
**ILLUSTRATED TOOL AND EQUIPMENT MANUAL**



**Vacuum Waste System Blockage Removal Equipment**  
**Figure 1**



767

## ILLUSTRATED TOOL AND EQUIPMENT MANUAL

**PART NUMBER: G38005-1, -61, -111**

**NAME:** TEST CHAMBER EQUIPMENT - LAVATORY SERVICE PANEL

**AIRPLANE MAINTENANCE:** YES

**COMPONENT MAINTENANCE:** NO

**USAGE & DESCRIPTION:** The G38005-1 or -111 test chamber equipment are used in conjunction with the G38005-61 adapter equipment on 767-300F airplanes. G38005 is used for leak testing the 767-300F waste drain and flush/fill connections at the lavatory service panels. Refer to AMM 38-32-60 for complete usage instructions.

G38005-1		
QUANTITY	NOMENCLATURE	PART NUMBER
1	CHAMBER ASSEMBLY	G38005-52
2	PUMP ASSEMBLY	G38005-53
2	AIR FILTER ASSEMBLY	G38005-54
1	STORAGE BOX	

G38005-111		
QUANTITY	NOMENCLATURE	PART NUMBER
1	CHAMBER ASSEMBLY	G38005-112
2	PUMP ASSEMBLY	G38005-53
2	AIR FILTER ASSEMBLY	G38005-54
1	STORAGE BOX	

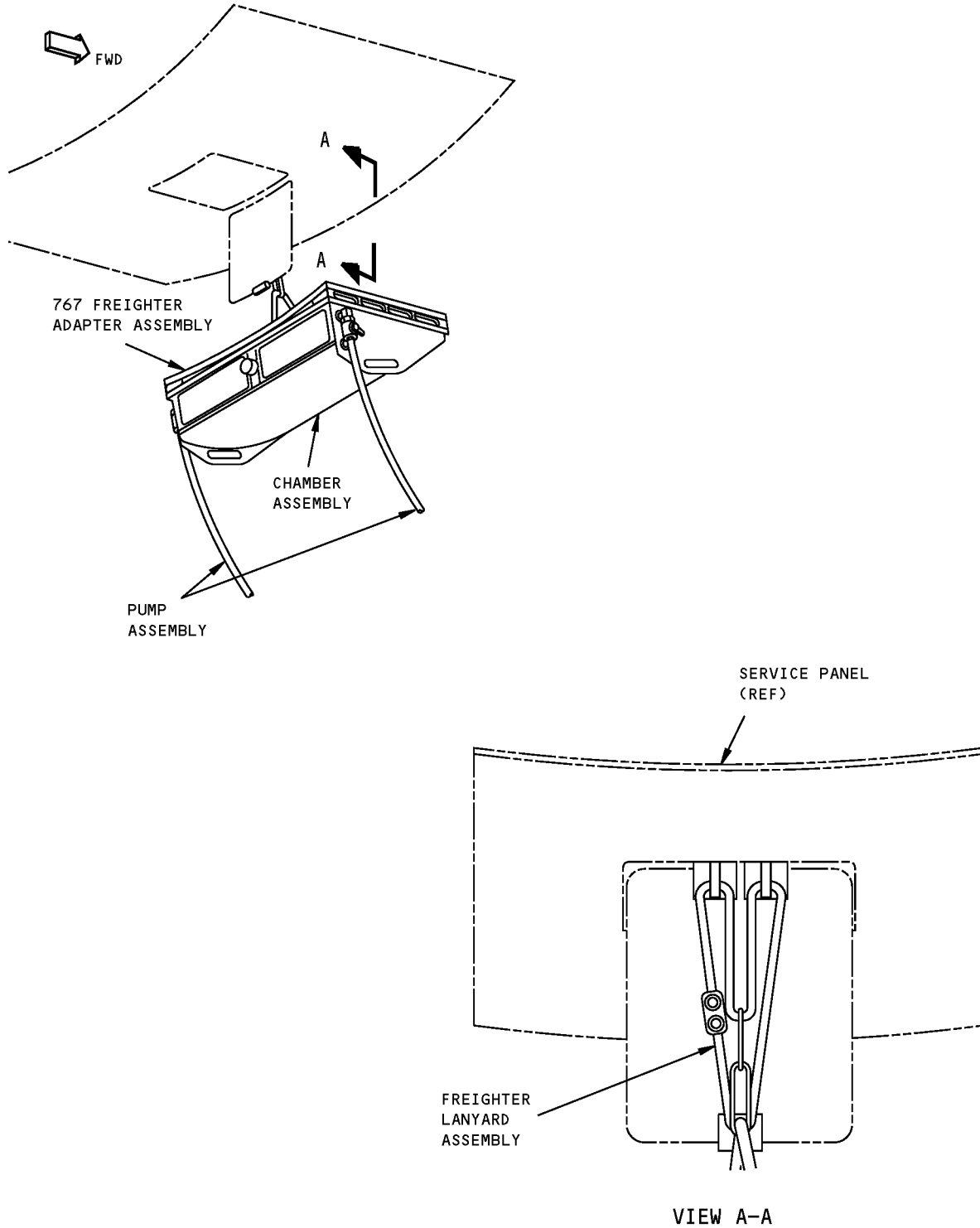
G38005-61		
QUANTITY	NOMENCLATURE	PART NUMBER
1	767 FREIGHTER ADAPTER	G38005-64
2	FREIGHTER LANYARD ASSEMBLY	G38005-65
1	STORAGE BOX	

**WEIGHT:** G38005-1, -111. - 30 lbs (14 kg)  
G38005-61. - 8 lbs (3.6 kg)

**DIMENSIONS:** G38005-1, -111. - 9 x 21 x 32 inches (229 x 533 x 813 mm)  
G38005-61. - 2 x 21 x 28 inches (229 x 533 x 711 mm)

**NOTE:** G38005-111 replaces G38005-1 for future procurement.

**767  
ILLUSTRATED TOOL AND EQUIPMENT MANUAL**



**Lavatory Service Panel Test Chamber Equipment  
Figure 1**

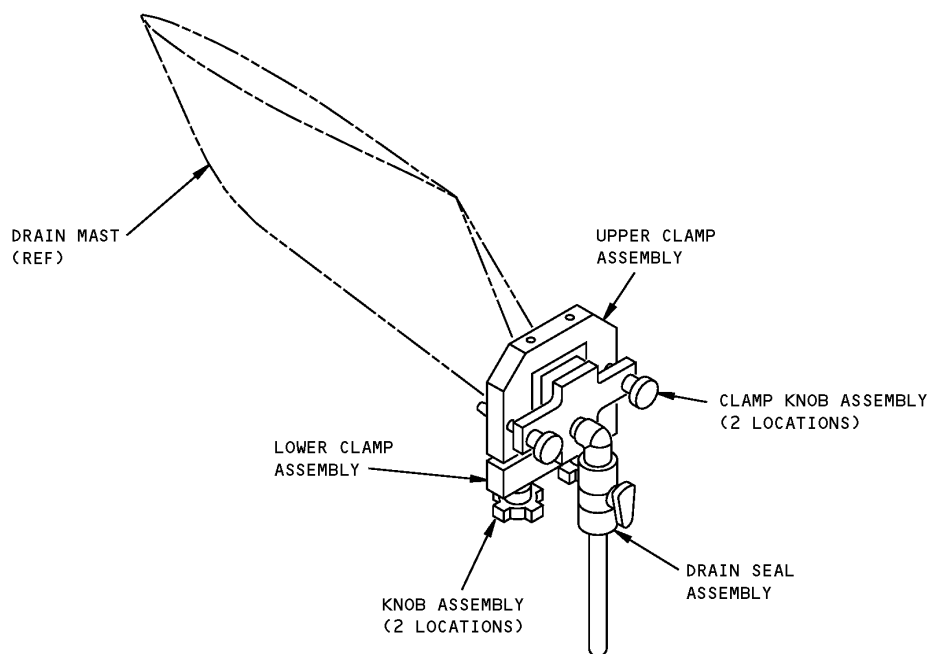
## ILLUSTRATED TOOL AND EQUIPMENT MANUAL

**PART NUMBER: C38001-23****NAME:** DRAIN MAST PLUG - WASTE WATER**AIRPLANE MAINTENANCE:** YES**COMPONENT MAINTENANCE:** NO

**USAGE & DESCRIPTION:** The C38001-23 drain mast plug is used on all 767 airplanes. C38001 is used to plug the forward and aft waste water drain masts during gray water cleaning procedures. Refer to AMM 38-10-00, AMM 38-31-00 and AMM 38-31-01 for complete usage instructions. The C38001-23 drain mast plug consists of one C38001-24 mast plug assembly contained in a storage box.

**WEIGHT:** 5 lbs (2.3 kg)**DIMENSIONS:** 8 x 12 x 12 inches (203 x 305 x 305 mm)

**NOTE:** C38001 replaces A38011 for future procurement.  
C38001-23 supersedes C38001-1



**Waste Water Drain Mast Plug  
Figure 1**



767

### ILLUSTRATED TOOL AND EQUIPMENT MANUAL

**PART NUMBER: A38012-1, -18, -31, -32, -39, -40**

**NAME:** PUMP EQUIPMENT - VACUUM LAVATORY SYSTEM

**AIRPLANE MAINTENANCE:** YES

**COMPONENT MAINTENANCE:** NO

**USAGE & DESCRIPTION:** The A38012-1, -18, -31, -32, -39 and -40 pump equipment are used on all 767 airplanes except the 767-300F. The A38012 pump equipment is used for the removal of build up on the inner surfaces of the water line. The A38012-1, -31 or -39 are used for static soaking only. The A38012-18, -32 or -40 are used for recirculating chemical soaking only. For airplanes with male to male connections, a sleeve (Part Number AS1654T32 or Part Number 14R02-32T) is required. Refer to AMM 38-32-00 and current A38012 drawing for complete usage instructions. The A38012-1, -18, -31, -32, -39 and -40 consist of:

A38012-1		
QUANTITY	NOMENCLATURE	PART NUMBER
1	DRUM PUMP ASSEMBLY	A38012-4
1	DRAIN HOSE ASSEMBLY	A38012-5
*[1]	FLUSH PLUG ASSEMBLY	A38012-6
*[1]	DRAIN VALVE ASSEMBLY	A38012-7
1	WATER SUPPLY ASSEMBLY	A38012-8
1	DRAIN END ASSEMBLY	A38012-9
1	AIR ASSEMBLY	A38012-10
*[1]	PLUG ASSEMBLY	A38012-11
*[1]	VENT ASSEMBLY	A38012-12
1	STORAGE BOX	

\*[1] QUANTITY BASED ON AIRLINE MAINTENANCE PROCESSES AND AIRPLANE CONFIGURATION

A38012-18		
QUANTITY	NOMENCLATURE	PART NUMBER
*[1]	FLUSH PLUG ASSEMBLY	A38012-6
1	WATER SUPPLY ASSEMBLY	A38012-8
1	AIR ASSEMBLY	A38012-10
1	DRUM PUMP ASSEMBLY	A38012-21
2	DRAIN HOSE ASSEMBLY	A38012-22
*[1]	DRAIN VALVE ASSEMBLY	A38012-23
1	DRAIN END ASSEMBLY	A38012-24



767

## ILLUSTRATED TOOL AND EQUIPMENT MANUAL

A38012-18		
QUANTITY	NOMENCLATURE	PART NUMBER
*[1]	PLUG ASSEMBLY	A38012-25
*[1]	JUMPER ASSEMBLY	A38012-26
*[1]	REPLACEMENT JUMPER MALE/MALE ASSEMBLY	A38012-29
*[1]	REPLACEMENT JUMPER MALE/FEMALE ASSEMBLY	A38012-30
1	STORAGE BOX	

\*[1] QUANTITY BASED ON AIRLINE MAINTENANCE PROCESSES AND AIRPLANE CONFIGURATION

A38012-31		
QUANTITY	NOMENCLATURE	PART NUMBER
1	Drain Hose Assembly	A38012-5
4	Flush Plug Assembly	A38012-6
4	Drain Valve Assembly	A38012-7
1	Water Supply Assembly	A38012-8
1	Drain End Assembly	A38012-9
13	Air Assembly	A38012-10
4	Plug Assembly	A38012-11
1	Vent Assembly	A38012-12
1	Drum Pump Assembly	A38012-35
1	Storage Box	

A38012-32		
QUANTITY	NOMENCLATURE	PART NUMBER
4	Flush Plug Assembly	A38012-6
1	Water Supply Assembly	A38012-8
1	Air Assembly	A38012-10
2	Drain Hose Assembly	A38012-22
4	Drain Valve Assembly	A38012-23
1	Drain End Assembly	A38012-24
13	Plug Assembly	A38012-25
3	Jumper Assembly	A38012-26
3	Replacement Male/Male Jumper Assembly	A38012-29
3	Replacement Male/Female Assembly	A38012-30
1	Drum Pump Assembly	A38012-36
1	Storage Box	





767

### ILLUSTRATED TOOL AND EQUIPMENT MANUAL

A38012-39		
QUANTITY	NOMENCLATURE	PART NUMBER
1	Drum Pump Assembly	A38012-35
1	Drain Hose Assembly	A38012-5
4	Flush Plug Assembly	A38012-6
4	Drain Valve Assembly	A38012-7
1	Water Supply Assembly	A38012-8
1	Drain End Assembly	A38012-9
1	Air Assembly	A38012-10
13	Plug Assembly	A38012-11
4	Vent Assembly	A38012-12
4	Optional Sleeve For Male/Male Drain Valve Assy	AS1654T32
1	Storage Box	

A38012-40		
QUANTITY	NOMENCLATURE	PART NUMBER
4	Flush Plug Assembly	A38012-5
1	Water Supply Assembly	A38012-8
1	Air Assembly	A38012-10
1	Drain Pump Assembly	A38012-35
2	Drain Hose Assembly	A38012-22
4	Drain Valve Assembly	A38012-23
1	Drain End Assembly	A38012-24
13	Plug Assembly	A38012-25
3	Jumper Assembly	A38012-26
3	Replacement Male/Male Jumper Assembly	A38012-29
3	Replacement Male/Female Assembly	A38012-30
4	Optional Sleeve For Male/Male Drain Valve Assy	AS1654T32
1	Storage Box	

**WEIGHT:** 300 lbs (136 kg)

**DIMENSIONS:** 24 x 24 x 36 inches (610 x 610 x 914 mm)

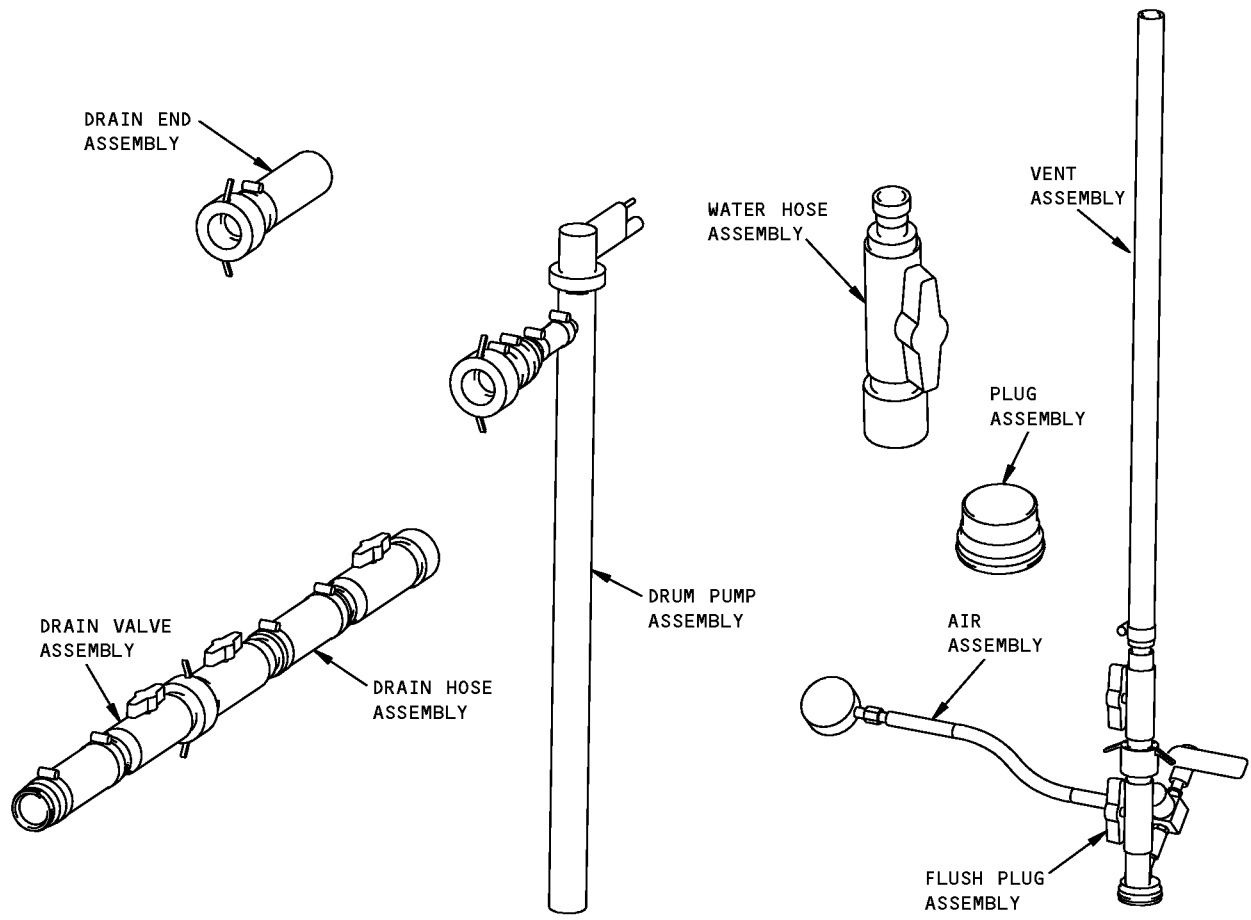


**767**

**ILLUSTRATED TOOL AND EQUIPMENT MANUAL**

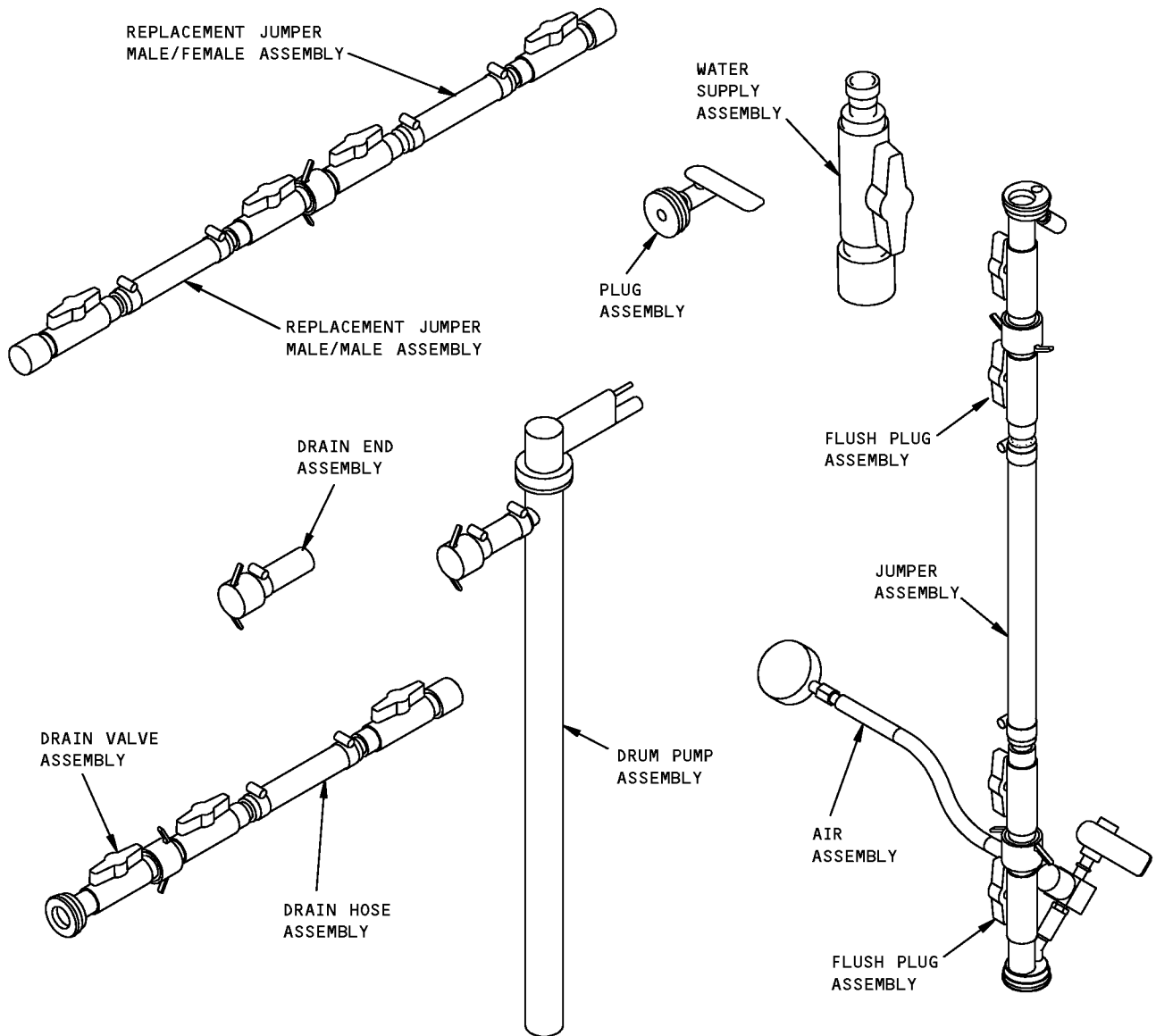
**NOTE:**

A38012-39 replaces A38012-31 for future procurement.  
A38012-40 replaces A38012-32 for future procurement.  
A38012-31 replaces A38012-1 for future procurement.  
A38012-32 replaces A38012-18 for future procurement.



**Vacuum Lavatory System Pump Equipment - A38012-1, -31**  
**Figure 1**

**ILLUSTRATED TOOL AND EQUIPMENT MANUAL**



**Vacuum Lavatory System Pump Equipment - A38012-18, -32**  
**Figure 2**



767

## ILLUSTRATED TOOL AND EQUIPMENT MANUAL

**PART NUMBER: J38001-16**

**NAME:** PRESSURIZATION EQUIPMENT - WASTE DRAIN SYSTEM

**AIRPLANE MAINTENANCE:** YES

**COMPONENT MAINTENANCE:** NO

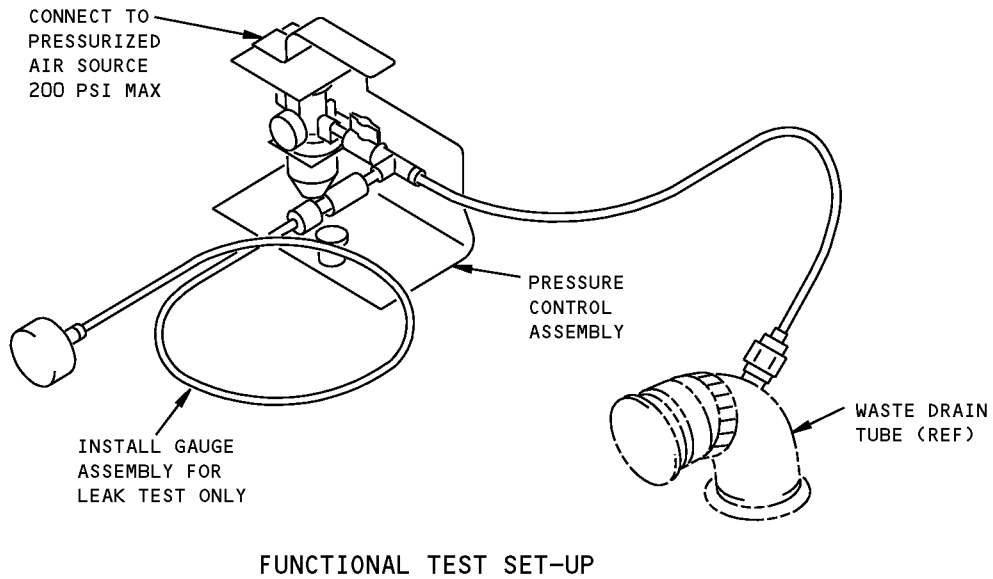
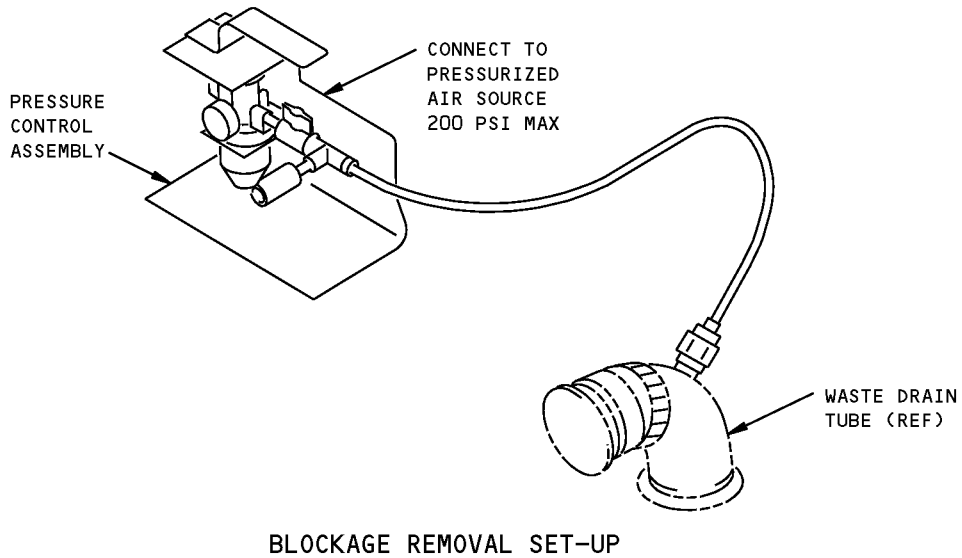
**USAGE & DESCRIPTION:** The J38001-16 pressurization equipment is used on 767-400 airplanes. J38001 is used for blockage removal between the waste tanks and the external service panels. J38001 is also used for the waste valve functional test. Refer to AMM 38-32-00 for complete usage instructions. The J38001-16 pressurization equipment consists of a J38001-17 pressure control assembly and a J38001-3 gauge assembly, both contained in a storage box.

**WEIGHT:** 5 lbs (2.5 kg)

**DIMENSIONS:** 9 x 12 x 12 inches (229 x 305 x 305 mm)

**NOTE:** J38001-16 supersedes J38001-1.

**ILLUSTRATED TOOL AND EQUIPMENT MANUAL**



**Waste Drain System Pressurization Equipment  
Figure 1**