

CHAPTER

73

**ENGINE FUEL AND
CONTROL**



767

ILLUSTRATED TOOL AND EQUIPMENT MANUAL

CHAPTER 73
ENGINE FUEL AND CONTROL

Subject/Page	Date	Subject/Page	Date	Subject/Page	Date
EFFECTIVE PAGES					
1	Apr 10/2008				
2	BLANK				
73-CONTENTS					
1	Apr 10/2006				
2	BLANK				
73-20-01					
1	Apr 10/2006				
2	BLANK				
73-20-02					
1	Apr 10/2006				
2	Apr 10/2006				
73-20-03					
1	Apr 10/2006				
2	Apr 10/2006				

A = Added, R = Revised, O = Overflow, D = Deleted

73-EFFECTIVE PAGES

Page 1
Apr 10/2008

D634T501



767

ILLUSTRATED TOOL AND EQUIPMENT MANUAL

TABLE OF CONTENTS

<u>Subject</u>	<u>Title</u>	<u>Part No.</u>
73-	ENGINE FUEL AND CONTROL	
73-20-01	ASPIRATOR - TT2 PROBE, JT9D-7R4D ENGINE	A71031-1
73-20-02	TEST CABLE - ELECTRONIC ENGINE CONTROL, JT9D-7R4D	A73001-1
73-20-03	WRENCH - MAIN ENGINE CONTROL, CF6-80C2, REMOVAL/ INSTALLATION	A73002-10

73-CONTENTS

Page 1
Apr 10/2006

D634T501

767
ILLUSTRATED TOOL AND EQUIPMENT MANUAL

PART NUMBER: A71031-1

NAME: ASPIRATOR - TT2 PROBE, JT9D-7R4D ENGINE

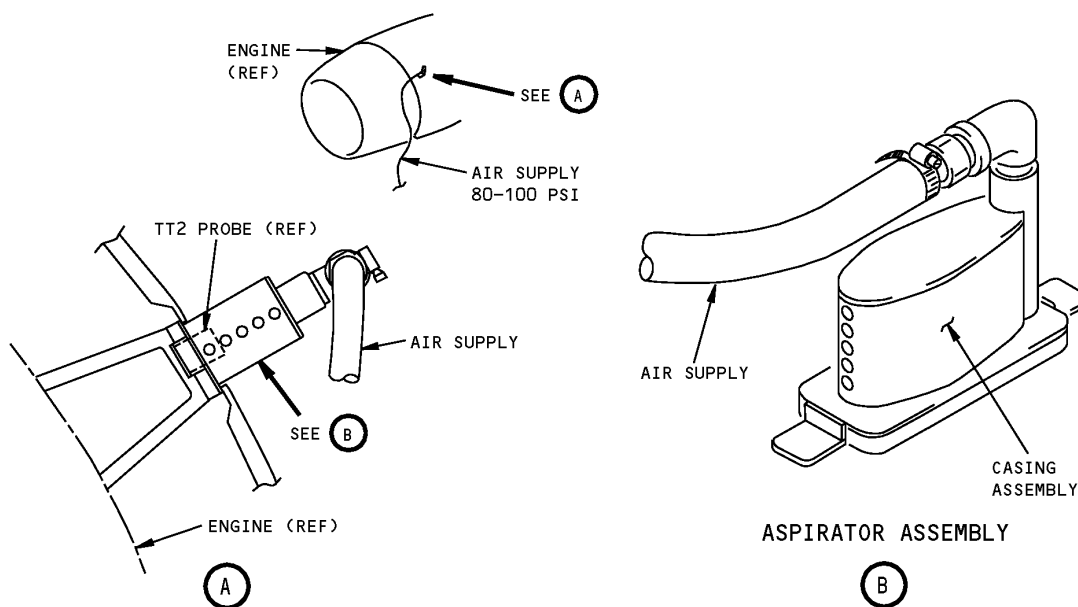
AIRPLANE MAINTENANCE: YES

COMPONENT MAINTENANCE: NO

USAGE & DESCRIPTION: The A71031-1 aspirator is used on 767 airplanes equipped with Pratt and Whitney JT9D-7R4D/E engines. A71031 is used to aspirate the TT2 probe during fuel control trimming of the JT9D-7R4D/E engines. Refer to AMM 71-01-00 for complete usage instructions. A71031-1 consists of an A71031-2 aspirator assembly contained in a storage box.

WEIGHT: 12 lbs (5.4 kg)

DIMENSIONS: 12 x 12 x 36 inches (305 x 305 x 914 mm)



JT9D-7R4D Engine TT2 Probe Aspirator
Figure 1



767

ILLUSTRATED TOOL AND EQUIPMENT MANUAL

PART NUMBER: A73001-1

NAME: TEST CABLE - ELECTRONIC ENGINE CONTROL, JT9D-7R4D

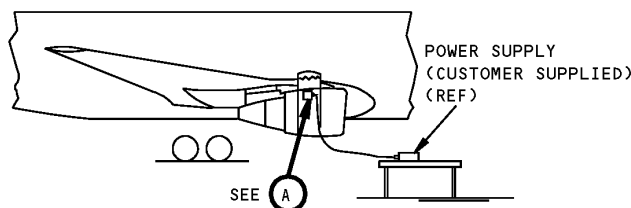
AIRPLANE MAINTENANCE: YES

COMPONENT MAINTENANCE: NO

USAGE & DESCRIPTION: The A73001-1 test cable is used on 767 airplanes equipped with JT9D-7R4D engines. A73001 is used to connect the airplane's electronic engine control (EEC) to Sorensen QRD40-2 DC external power supply during airplane system testing of the EEC and thrust management system. The ground tests in the Auto Flight System (AMM 22) requires two A73001-1 test cables, two QRD40-2 DC external power supplies and one A22001 remote maintenance control data panel. The Power Plant System (AMM 71) and Engine Fuel and Control System (AMM 73) both require one A73001-1 and one QRD40-2 power supply. Refer to AMM 22-32-00, AMM 71-08-00 and AMM 73-21-07 for complete usage instructions. A73001-1 consists of an A73001-2 cable assembly contained in a storage box.

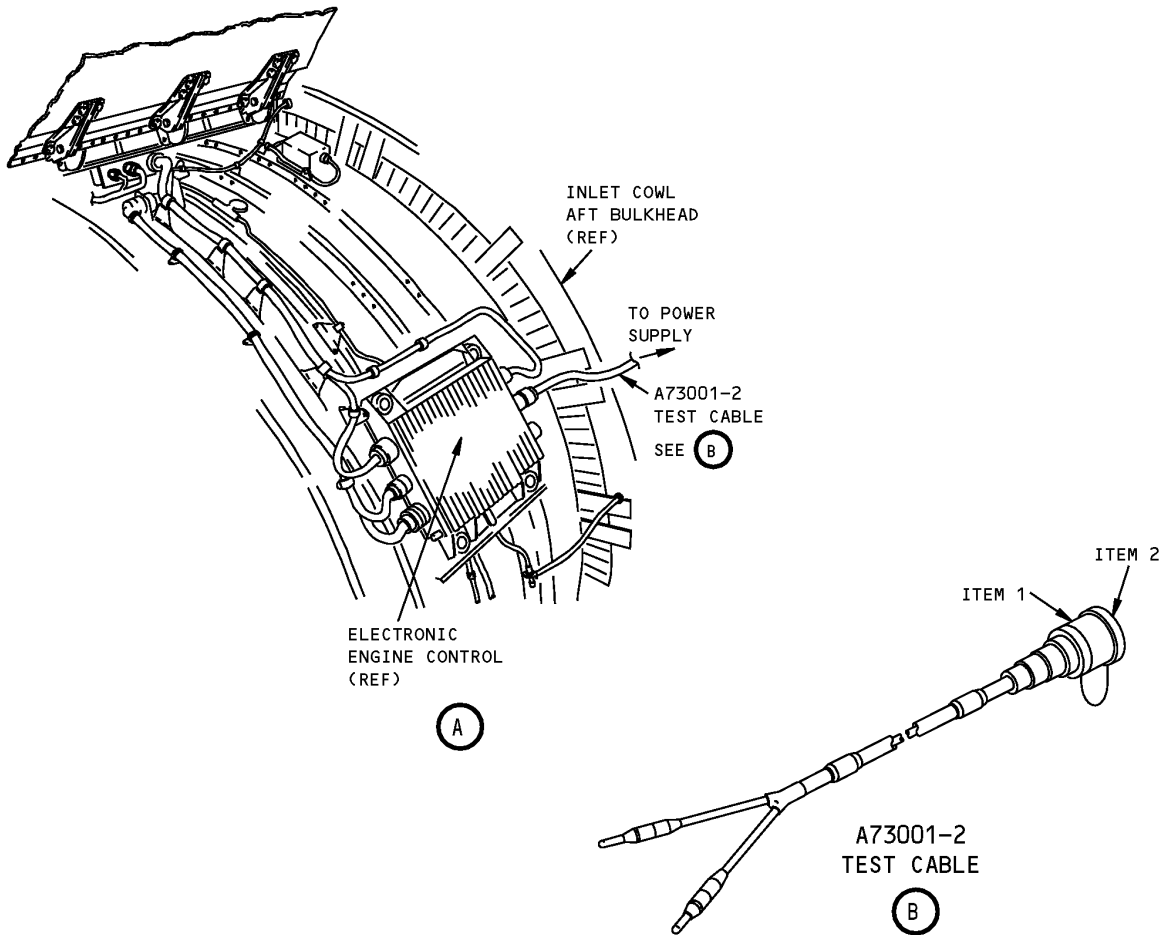
WEIGHT: 5 lbs (2.3 kg)

DIMENSIONS: 4 x 12 x 12 inches (102 x 305 x 305 mm)



**JT9D-7R4D Electronic Engine Control Test Cable
Figure 1 (Sheet 1 of 2)**

**767
ILLUSTRATED TOOL AND EQUIPMENT MANUAL**



**JT9D-7R4D Electronic Engine Control Test Cable
Figure 1 (Sheet 2 of 2)**

REPAIRABLE/REPLACEABLE PARTS			
ITEM NO.	PART NO.	NOMENCLATURE	VENDOR CODE
1	M83723/87R2041N	CONNECTOR	
2	M83723/59-120AC	DUST CAP	



767

ILLUSTRATED TOOL AND EQUIPMENT MANUAL

PART NUMBER: A73002-10

NAME: WRENCH - MAIN ENGINE CONTROL, CF6-80C2, REMOVAL/INSTALLATION

AIRPLANE MAINTENANCE: YES

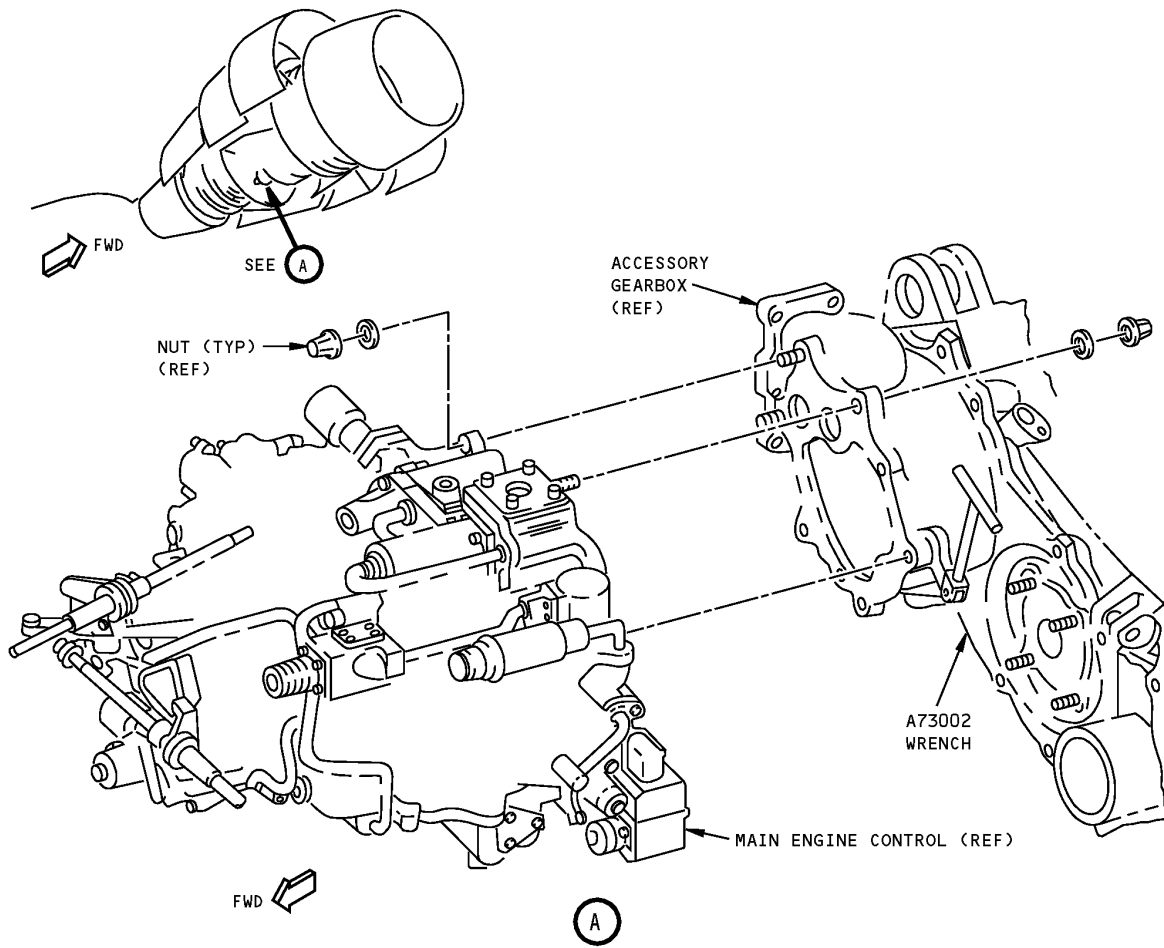
COMPONENT MAINTENANCE: NO

USAGE & DESCRIPTION: The A73002-10 wrench is used on 767 airplanes equipped with CF6-80C2 engines. A73002 is used for removal and installation of the main engine control. Refer to the current A73002 drawing for complete usage instructions. A73002-1 consists of an A73002-11 wrench assembly contained in a storage box.

WEIGHT: 3 lbs (1.4 kg)

DIMENSIONS: 21 x 6 x 3 inches (533 x 152 x 76 mm)

NOTE: A73002-10 supersedes A73002-1.



**Removal/Installation CF6-80C2 Main Engine Control Wrench
Figure 1**