

CHAPTER

76

ENGINE CONTROLS



767
ILLUSTRATED TOOL AND EQUIPMENT MANUAL

CHAPTER 76
ENGINE CONTROLS

Subject/Page	Date	Subject/Page	Date	Subject/Page	Date
EFFECTIVE PAGES					
1	Apr 10/2008				
2	BLANK				
76-CONTENTS					
1	Apr 10/2006				
2	BLANK				
76-10-01					
1	Apr 10/2006				
2	BLANK				
76-10-02					
1	Apr 10/2006				
2	BLANK				
76-10-03					
1	Apr 10/2006				
2	Apr 10/2006				
76-10-04					
1	Apr 10/2006				
2	BLANK				
76-10-05					
1	Apr 10/2006				
2	BLANK				

A = Added, R = Revised, O = Overflow, D = Deleted

76-EFFECTIVE PAGES



767

ILLUSTRATED TOOL AND EQUIPMENT MANUAL

TABLE OF CONTENTS

<u>Subject</u>	<u>Title</u>	<u>Part No.</u>
76-	ENGINE CONTROLS	
76-10-01	TEST FIXTURE - THRUST LEVER, CONTROL STAND	A76001-1
76-10-02	RIGGING EQUIPMENT - ENGINE CONTROL SYSTEM	B76003-1
76-10-03	ADAPTER - THRUST CONTROL INNER SHAFT	B76004-1
76-10-04	WRENCH - SPANNER, THRUST LEVER CONTROL STAND SHAFT ASSEMBLY	J76002-1
76-10-05	PROTRACTOR - THRUST REVERSER LEVERS, FORWARD AND REVERSE	G76002-15

76-CONTENTS

Page 1
Apr 10/2006

D634T501

767
ILLUSTRATED TOOL AND EQUIPMENT MANUAL

PART NUMBER: A76001-1

NAME: TEST FIXTURE - THRUST LEVER, CONTROL STAND

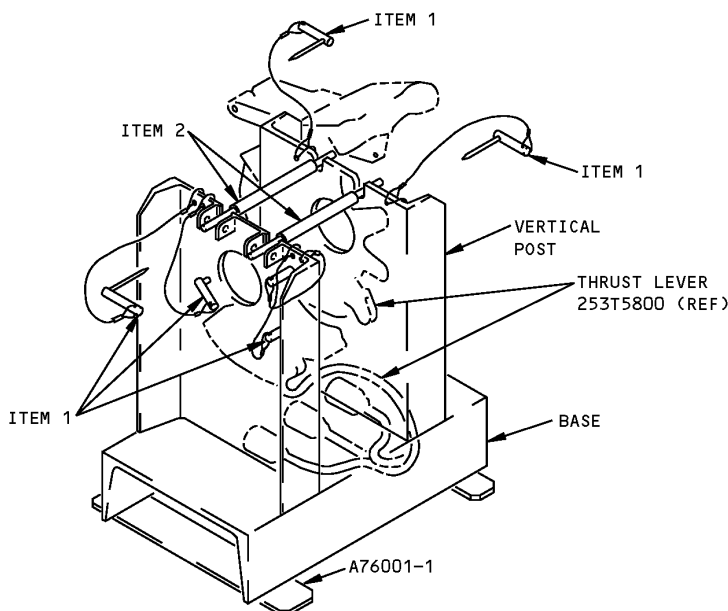
AIRPLANE MAINTENANCE: NO

COMPONENT MAINTENANCE: YES

USAGE & DESCRIPTION: The A76001-1 test fixture is applicable to all 767 airplanes except 767-200C and 767-400. A76001 secures the control stand thrust lever installation for functional testing. Refer to CMM 76-11-21 for complete usage instructions. A76001-1 consists of a A76001-2 stand assembly, two A76001-9 rod assemblies, eight CL-5-LP-C "L" pins and connecting hardware.

WEIGHT: 26 lbs (11.8 kg)

DIMENSIONS: 16 x 17 x 19 inches (406 x 432 x 483 mm)



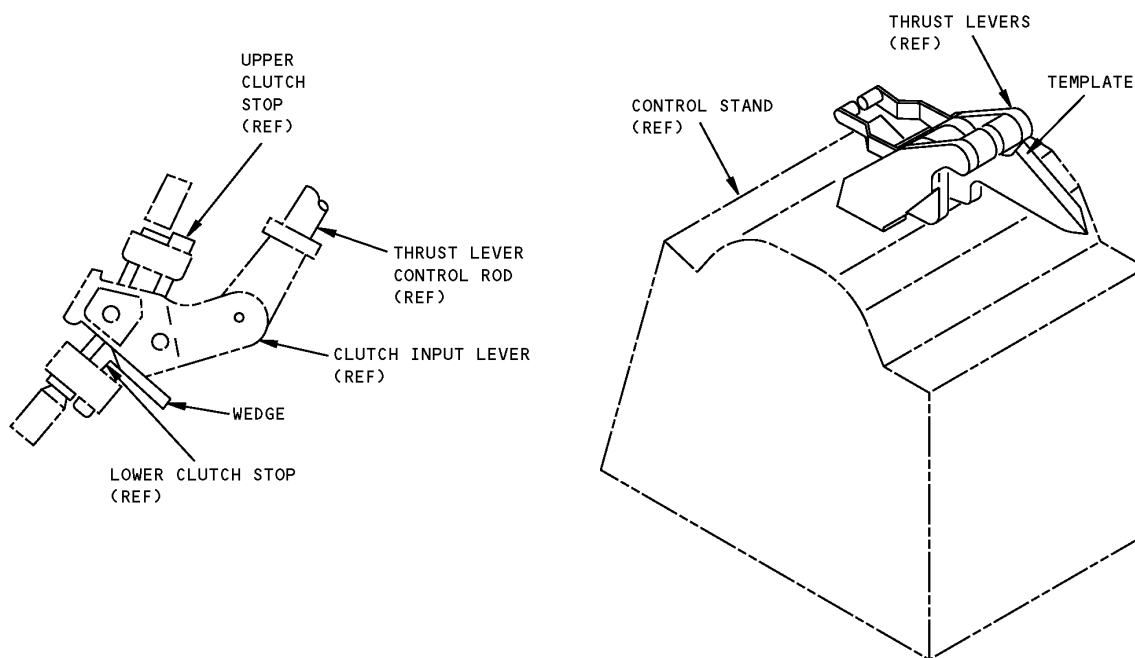
Control Stand Thrust Lever Test Fixture
Figure 1

REPAIRABLE/REPLACEABLE PARTS			
ITEM NO.	PART NO.	NOMENCLATURE	VENDOR CODE
1	CL-5-LP-C	"L" PIN	V99862
2	A76001-9	ROD ASSEMBLY	

ILLUSTRATED TOOL AND EQUIPMENT MANUAL

PART NUMBER: B76003-1**NAME:** RIGGING EQUIPMENT - ENGINE CONTROL SYSTEM**AIRPLANE MAINTENANCE:** YES**COMPONENT MAINTENANCE:** NO

USAGE & DESCRIPTION: The B76003-1 is used on all 767 airplanes except 767-200C and 767-400. The B76003-1 rigging equipment is used to position the check thrust lever spring scale and for thrust lever load testing. Refer to AMM 76-11-00 for complete usage instructions. The B76003-1 consists of a B76003-2 wedge assembly and a B76003-4 template, both contained in a storage box.

WEIGHT: 0.5 lb (0.2 kg)**DIMENSIONS:** 1 x 6 x 12 inches (25 x 152 x 305 mm)

**Engine Control System Rigging Equipment
Figure 1**



767

ILLUSTRATED TOOL AND EQUIPMENT MANUAL

PART NUMBER: B76004-1

NAME: ADAPTER - THRUST CONTROL INNER SHAFT

AIRPLANE MAINTENANCE: NO

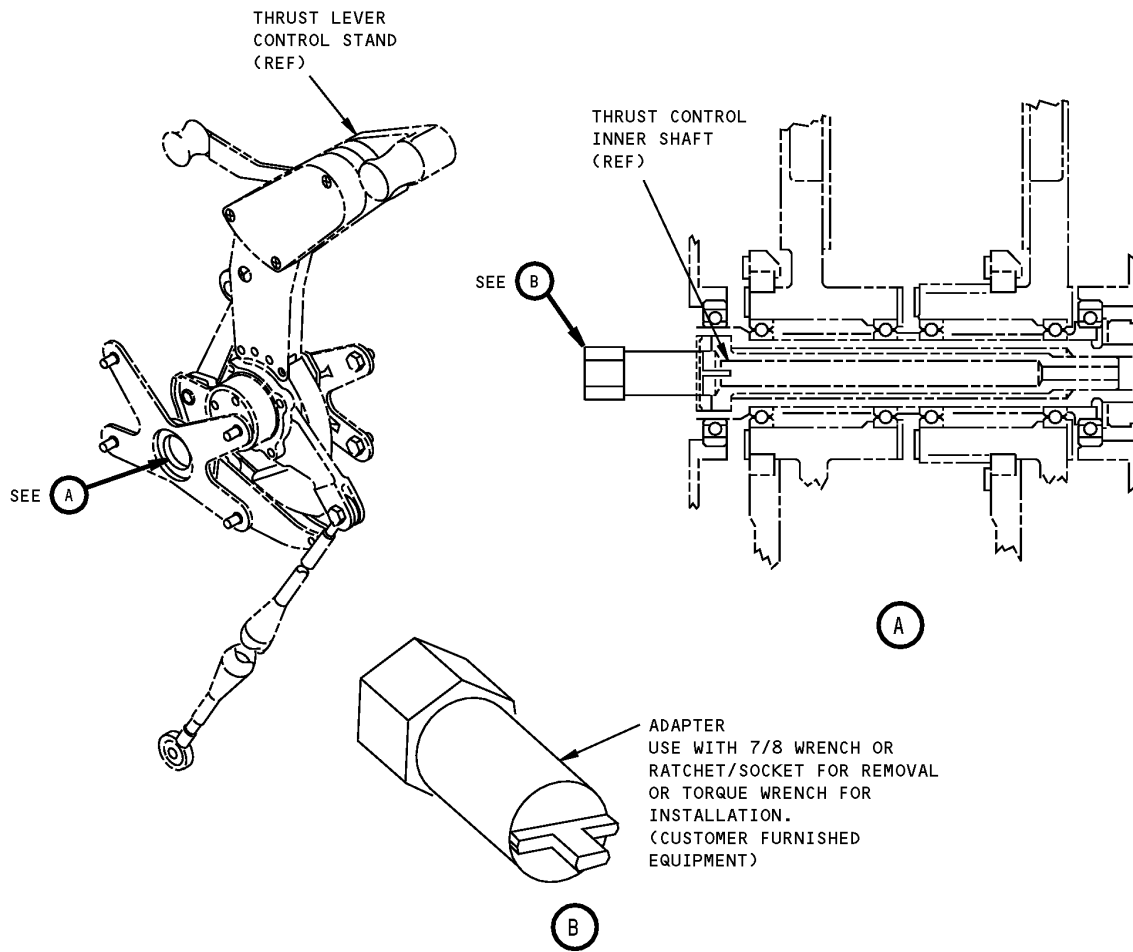
COMPONENT MAINTENANCE: YES

USAGE & DESCRIPTION: The B76004-1 adapter is used during component maintenance on all 767 airplanes except the 767-200C and 767-400. B76004 is used for the removal and installation of the thrust control inner shaft. Refer to CMM 76-11-19 for complete usage information. The B76004-1 consists of a B76004-3 adapter contained in a storage box.

WEIGHT: 0.5 lb (0.2 kg)

DIMENSIONS: 1 x 1 x 3 inches (25 x 25 x 76 mm)

ILLUSTRATED TOOL AND EQUIPMENT MANUAL



**Thrust Control Inner Shaft Adapter
Figure 1**

ILLUSTRATED TOOL AND EQUIPMENT MANUAL

PART NUMBER: J76002-1

NAME: WRENCH - SPANNER, THRUST LEVER CONTROL STAND SHAFT ASSEMBLY

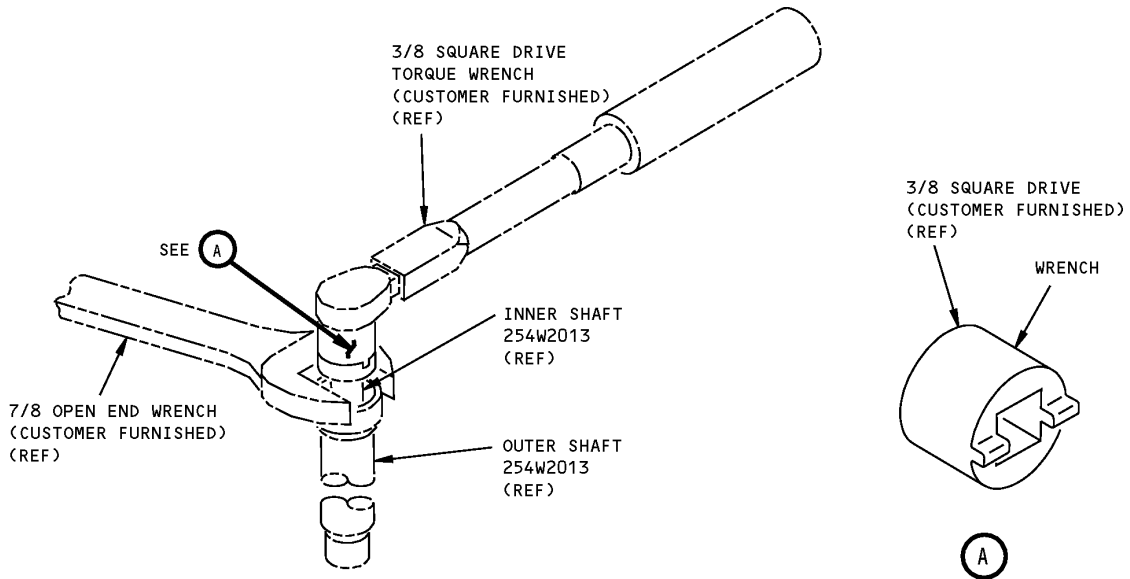
AIRPLANE MAINTENANCE: NO

COMPONENT MAINTENANCE: YES

USAGE & DESCRIPTION: The J76002-1 wrench is used on all 767 airplanes. J76002 is used to remove and install the thrust lever control stand inner shaft from the outer shaft. J76002 is used in conjunction with a customer-furnished 3/8 inch square drive torque wrench and a 7/8 inch open end wrench or vise. See CMM 76-11-22 for complete usage information. J76002-1 consists of a J76002-2 wrench contained in a storage box.

WEIGHT: 0.1 lb (0.04 kg)

DIMENSIONS: 1 x 1 x 1 inches (25 x 25 x 25 mm)



**Thrust Lever Control Stand Shaft Assembly Spanner Wrench
Figure 1**

767
ILLUSTRATED TOOL AND EQUIPMENT MANUAL

PART NUMBER: G76002-15

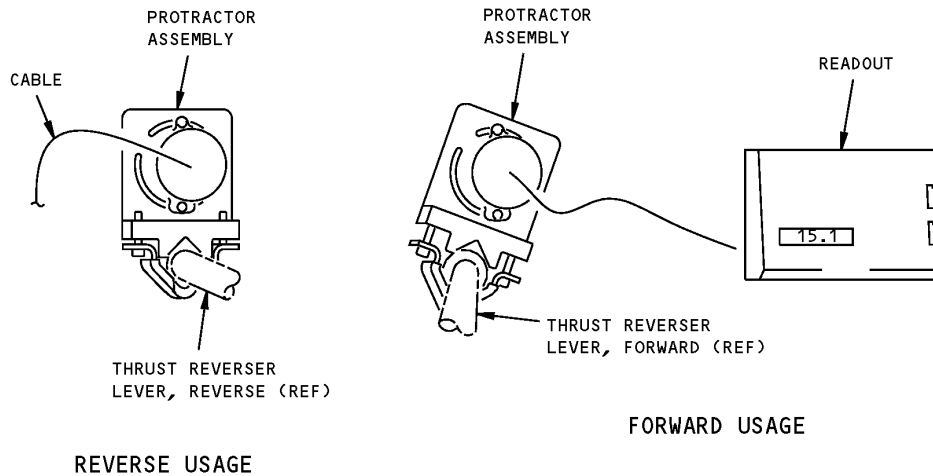
NAME: PROTRACTOR - THRUST REVERSER LEVERS, FORWARD AND REVERSE

AIRPLANE MAINTENANCE: YES

COMPONENT MAINTENANCE: YES

USAGE & DESCRIPTION: The G76002-15 protractor is used on all 767 airplanes. G76002 is used for full travel angular measurements of the forward and reverse thrust reverser levers. Refer to the current G76002 drawing, AMM 76-11-01, CMM 76-11-19 and CMM 76-11-22 for complete usage instructions. G76002-15 consists of a G76002-17 protractor assembly contained in a storage box.

NOTE: G76002-15 supersedes G76002-7.



Forward and Reverse, Thrust Reverser Levers Protractor
Figure 1