



767 MAINTENANCE PLANNING DATA

SECTION 2. AIRPLANE DIMENSIONS

A. GENERAL DIMENSIONS.....	2.0-4
B. MAJOR AIRPLANE DIMENSIONS - 767-200.....	2.0-4
C. MAJOR AIRPLANE DIMENSIONS - 767-300.....	2.0-6
D. MAJOR AIRPLANE DIMENSIONS - 767-400.....	2.0-8



767 MAINTENANCE PLANNING DATA

THIS PAGE INTENTIONALLY LEFT BLANK



767 MAINTENANCE PLANNING DATA

LIST OF FIGURES

<u>FIGURE</u>	<u>TITLE</u>	<u>PAGE</u>
FIGURE 1.	767-200 AIRPLANE DIMENSIONS	2.0-5
FIGURE 2.	767-300 AIRPLANE DIMENSIONS	2.0-7
FIGURE 3.	767-400 AIRPLANE DIMENSIONS	2.0-9



767 MAINTENANCE PLANNING DATA

A. GENERAL DIMENSIONS

The basic dimensions, including steering angle data, for the 767-200, 767-300 and 767-400 airplanes are depicted in Figures 1, 2 and 3 respectively. All data included in this section is contained in 06-10-00 of the Maintenance Manual.

B. MAJOR AIRPLANE DIMENSIONS - 767-200

	767-200	
	English	Metric
Wing span	156 FT 1 IN.	47.57 M
Horizontal stabilizer span	61 FT 1 IN.	18.62 M
Height to top of fuselage	24 FT 4 IN.	7.42 M
Height to top of vertical stabilizer	52 FT 10 IN.	16.10 M
Overall length	159 FT 2 IN.	48.51 M
Distance between main gear struts	30 FT 6 IN.	9.30 M
Distance between nose gear and main gear	64 FT 7 IN.	19.69 M

NOTE: The 767-200 Body Station Diagram is included in Section 3, as Figure 1. For more specific airplane dimensions, refer to the 767 Maintenance Facility and Equipment Planning Document, D6-48646.

D622T001

AUG 2000

BOEING PROPRIETARY - Copyright (c) - Unpublished Work - See title page for details

Page 2.0-4



767 MAINTENANCE PLANNING DATA

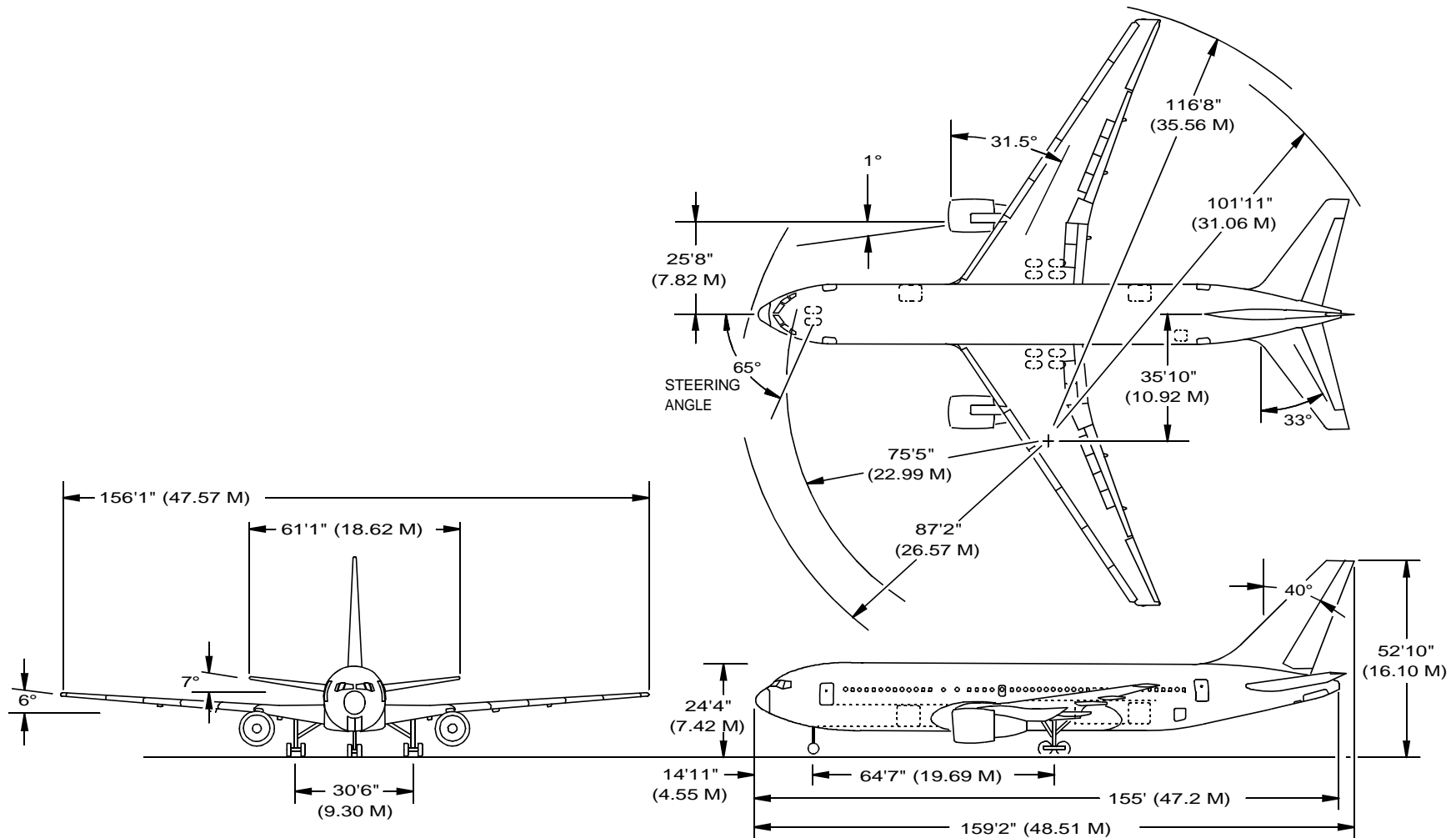


FIGURE 1. 767-200 AIRPLANE DIMENSIONS

D622T001



767 MAINTENANCE PLANNING DATA

C. MAJOR AIRPLANE DIMENSIONS - 767-300

	767-300	
	English	Metric
Wing span	156 FT 1 IN.	47.57 M
Horizontal stabilizer span	61 FT 1 IN.	18.62 M
Height to top of fuselage	24 FT 4 IN.	7.42 M
Height to top of vertical stabilizer	52 FT 7 IN.	16.03 M
Overall length	180 FT 3 IN.	54.94 M
Distance between main gear struts	30 FT 6 IN.	9.30 M
Distance between nose gear and main gear	74 FT 8 IN.	22.76 M

NOTE: The 767-300 Body Station Diagram is included in Section 3, as Figure 2. For more specific airplane dimensions, refer to the 767 Maintenance Facility and Equipment Planning Document, D6-48646.

D622T001

FEB 1993

BOEING PROPRIETARY - Copyright (c) - Unpublished Work - See title page for details

Page 2.0-6



767 MAINTENANCE PLANNING DATA

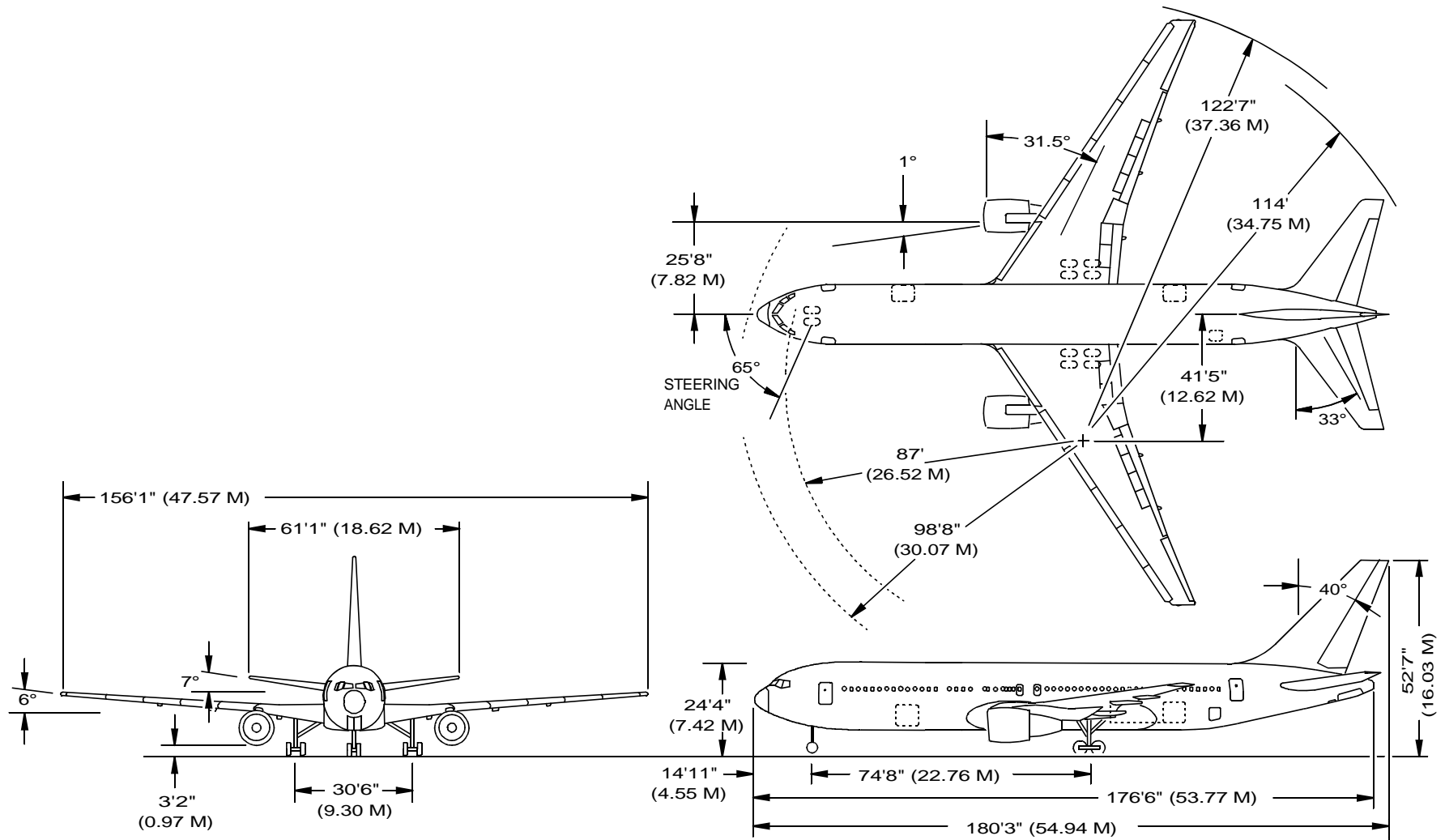


FIGURE 2. 767-300 AIRPLANE DIMENSIONS

D622T001



767 MAINTENANCE PLANNING DATA

D. MAJOR AIRPLANE DIMENSIONS - 767-400

	767--400	
	English	Metric
Wing span	170 FT 4 IN.	51.92 M
Horizontal stabilizer span	61 FT 1 IN.	18.62 M
Height to top of fuselage	24 FT 4 IN.	7.42 M
Height to top of vertical stabilizer	55 FT 11 IN.	17.01 M
Overall length	201 FT 4 IN.	61.37 M
Distance between main gear struts	30 FT 6 IN.	9.30 M
Distance between nose gear and main gear	85 FT 10 IN.	26.16 M

NOTE: The 767-400 Body Station Diagram is included in Section 3, as Figure 3. For more specific airplane dimensions, refer to the 767 Maintenance Facility and Equipment Planning Document, D6-48646.



767 MAINTENANCE PLANNING DATA

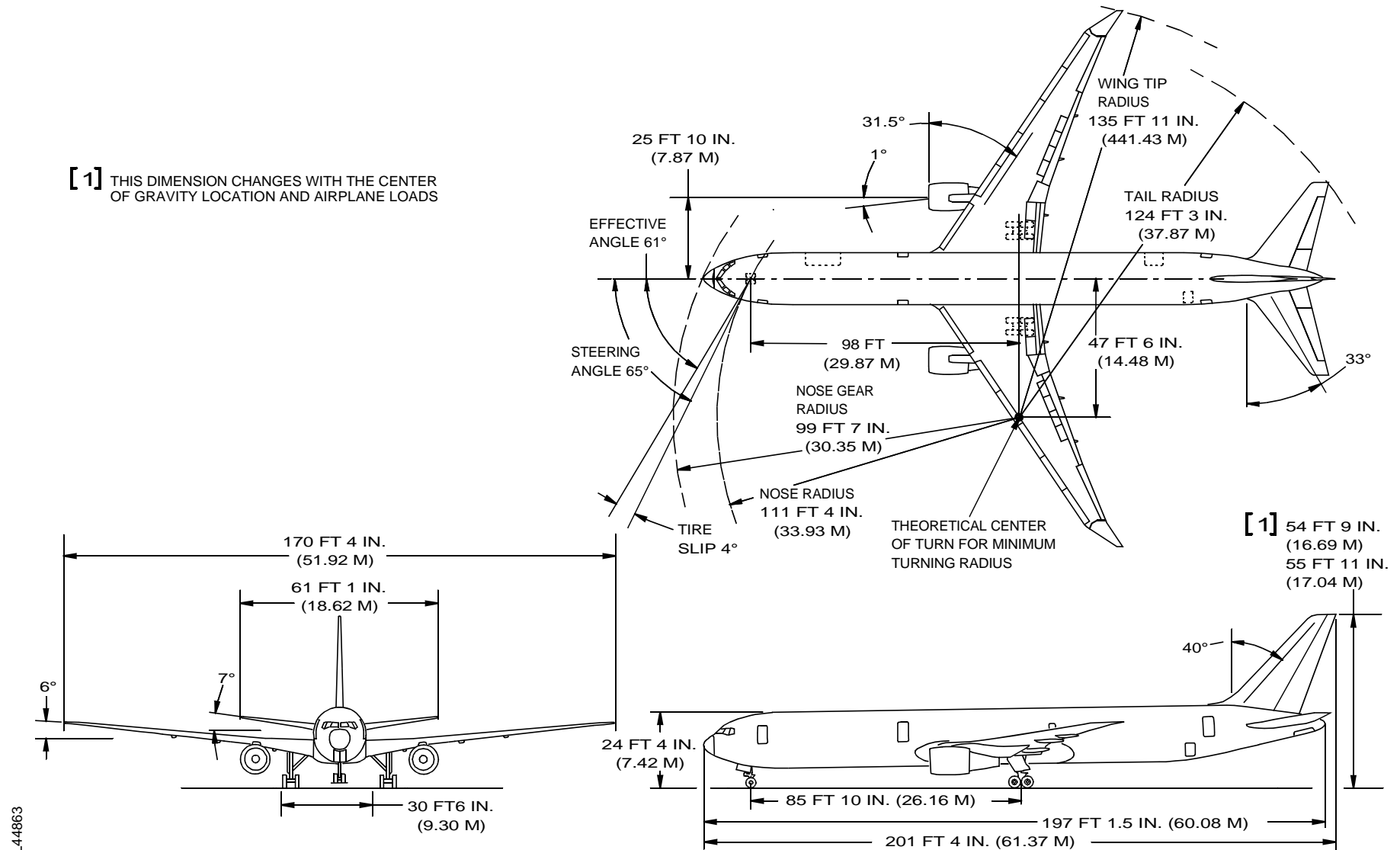


FIGURE 3. 767-400 AIRPLANE DIMENSIONS

D622T001



767 MAINTENANCE PLANNING DATA

THIS PAGE INTENTIONALLY LEFT BLANK