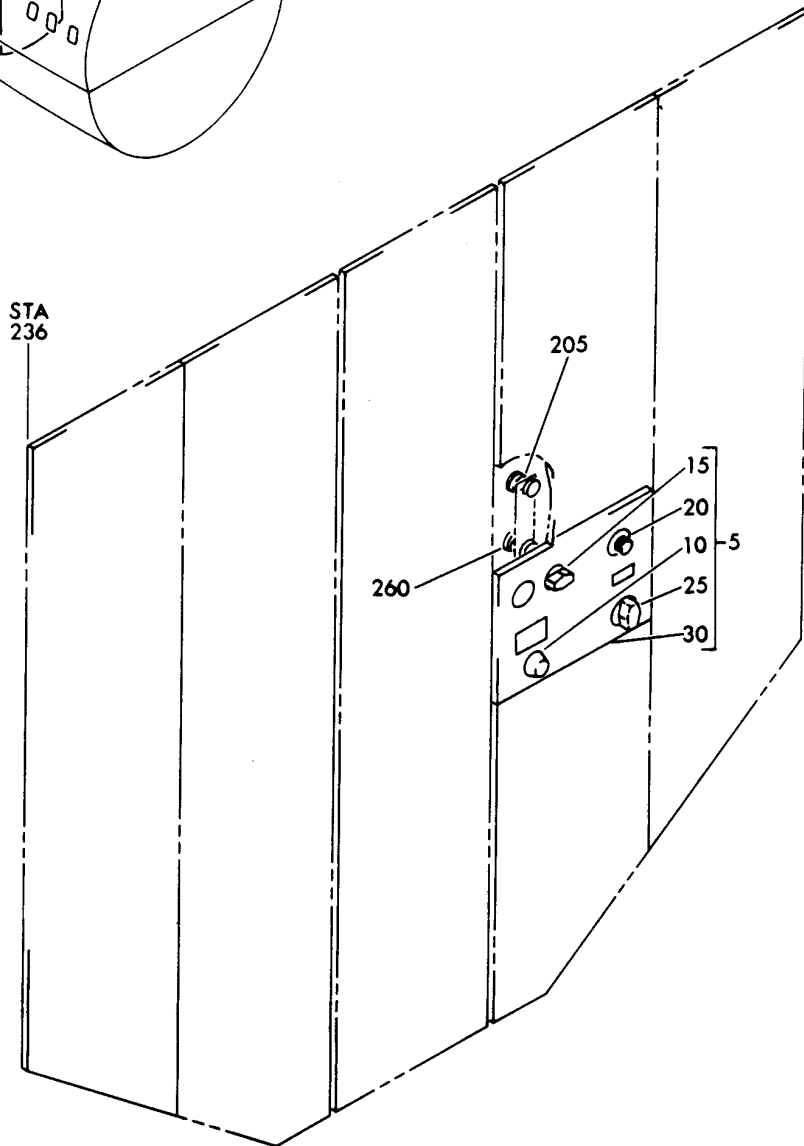
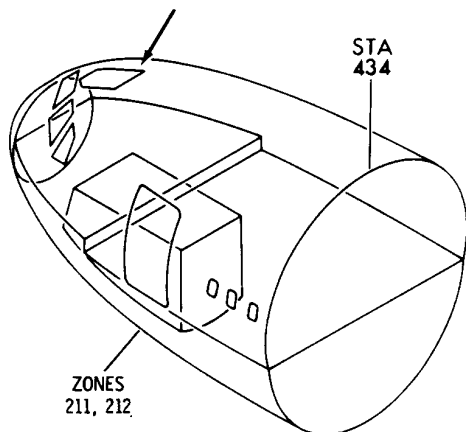


## PRESSURIZATION CONTROL SYSTEM

HXL  
DEC 22/06

21-31-00  
SECTION TITLE  
PAGE 1

**BOEING**  
767  
PARTS CATALOG (MAINTENANCE)



V 21310110 SH1 1 REV 048

PANEL INSTL-OVERHEAD (PRESSURIZATION CONTROL SYSTEM ONLY)  
FIGURE 10

**21-31-01-10**

HXL  
DEC 22/06

21-31-01-10  
PAGE 0



767

PARTS CATALOG (MAINTENANCE)

FIG ITEM	PART NUMBER	1 2 3 4 5 6 7	NOMENCLATURE	EFFECT FROM TO	UNITS PER ASSY
10			PANEL INSTL-OVERHEAD (PRESSURIZATION CONTROL SYSTEM ONLY)		
- 1	233T3100-1		PANEL INSTL-OVERHEAD (PRESSURIZATION CONTROL SYSTEM ONLY) VARIABLE DRAWING REF: 233T3100-5048 FOR NHA/OTHER SYS DET SEE: 25-10-00-03		RF
5	130502-4		.PANEL ASSY-CAB. PRESSURE SELECTOR SUPPLIER CODE: V64547 SPECIFICATION NUMBER: S210T160-42 ELECTRICAL EQUIP NUMBER: M00013 COMPONENT MAINT MANUAL REF: 21-31-50		1
5	130502-5		.PANEL ASSY-CAB. PRESSURE SELECTOR SUPPLIER CODE: V64547 SPECIFICATION NUMBER: S210T160-52 ELECTRICAL EQUIP NUMBER: M00013 COMPONENT MAINT MANUAL REF: 21-31-50		1
5	130502-7		.PANEL ASSY-CAB. PRESSURE SELECTOR SUPPLIER CODE: V64547 FUNCTIONAL DESCRIPTION: SELECTOR CONTAINS CONTROLS AND CIRCUITRY NECESSARY FOR AUTOMATIC OR MANUAL PRESSURE SELECTION SPECIFICATION NUMBER: S210T160-72 ELECTRICAL EQUIP NUMBER: M00013 COMPONENT MAINT MANUAL REF: 21-31-50		1

ILLUSTRATION ITEMS NOT ON PARTS LIST ARE NOT APPLICABLE

- ITEM NOT ILLUSTRATED

HXL

21-31-01-10

BOEING PROPRIETARY - Copyright © - Unpublished Work - See title page for details.

21-31-01  
FIG. 10  
PAGE 1  
DEC 22/07



767

PARTS CATALOG (MAINTENANCE)

FIG ITEM	PART NUMBER	1 2 3 4 5 6 7	NOMENCLATURE	EFFECT FROM TO	UNITS PER ASSY
10 5	130502-6		.PANEL ASSY-CAB. PRESSURE SELECTOR SUPPLIER CODE: V64547 SPECIFICATION NUMBER: S210T160-62 ELECTRICAL EQUIP NUMBER: M00013 COMPONENT MAINT MANUAL REF: 21-31-50		1
10	GP265-102		..KNOB-PLASTIC SUPPLIER CODE: V81590 CONFIG CHG DATA FROM A CMM: REPLD BY 452-014-9001 USED ON: 130502-4		1
10	RD240-110		..KNOB-PLASTIC SUPPLIER CODE: V81590 CONFIG CHG DATA FROM A CMM: REPLD BY 452-019-9001 USED ON: 130502-5 130502-6		1
10	452-019-9001		..KNOB-PLASTIC SUPPLIER CODE: V64547 CONFIG CHG DATA FROM A CMM: REPLS RD240-110 USED ON: 130502-7 USED ON: 130502-6		1
10	452-014-9001		..KNOB-PLASTIC SUPPLIER CODE: V64547 CONFIG CHG DATA FROM A CMM: REPLS GP265-102 USED ON: 130502-4		1

ILLUSTRATION ITEMS NOT ON PARTS LIST ARE NOT APPLICABLE

- ITEM NOT ILLUSTRATED

HXL

21-31-01-10

BOEING PROPRIETARY - Copyright © - Unpublished Work - See title page for details.

21-31-01  
FIG. 10  
PAGE 2  
DEC 22/06



767

PARTS CATALOG (MAINTENANCE)

FIG ITEM	PART NUMBER	1 2 3 4 5 6 7	NOMENCLATURE	EFFECT FROM TO	UNITS PER ASSY
10					
15	BP260-101		..KNOB-PLASTIC SUPPLIER CODE: V81590 SB DATA FROM A CMM: PRE SB 21-2591 CONFIG CHG DATA FROM A CMM: REPLD BY 452-013-9001 USED ON: 130502-4 130502-6 USED ON: 130502-5 150502-6		1
15	BP260-113		..KNOB- SUPPLIER CODE: V81590 SB DATA FROM A CMM: POST SB 21-2591 CONFIG CHG DATA FROM A CMM: REPLD BY 452-013-9101 USED ON: 130502-7		1
15	452-013-9001		..KNOB- SUPPLIER CODE: V64547 CONFIG CHG DATA FROM A CMM: REPLS BP260-101 USED ON: 130502-4 USED ON: 130502-5 130502-6		1
15	452-013-9101		..KNOB- SUPPLIER CODE: V64547 CONFIG CHG DATA FROM A CMM: REPLS BP260-113 USED ON: 130502-7		1
20	RD381-103		..KNOB-PLASTIC SUPPLIER CODE: V81590 SB DATA FROM A CMM: PRE SB 21-2591 CONFIG CHG DATA FROM A CMM: REPLD BY 452-015-9001 OPTIONAL PART: 452-015-9001 V64547		1

ILLUSTRATION ITEMS NOT ON PARTS LIST ARE NOT APPLICABLE

- ITEM NOT ILLUSTRATED

HXL

21-31-01-10

BOEING PROPRIETARY - Copyright © - Unpublished Work - See title page for details.

21-31-01  
FIG. 10  
PAGE 3  
DEC 22/06



767

PARTS CATALOG (MAINTENANCE)

FIG ITEM	PART NUMBER	1 2 3 4 5 6 7	NOMENCLATURE	EFFECT FROM TO	UNITS PER ASSY
10					
20	RD381-104		.. KNOB- SUPPLIER CODE: V81590 SB DATA FROM A CMM: POST SB 21-2591 CONFIG CHG DATA FROM A CMM: REPLD BY 452-015-9101 USED ON: 130502-7		1
20	452-015-9001		.. KNOB-PLASTIC SUPPLIER CODE: V64547 CONFIG CHG DATA FROM A CMM: REPLS RD381-103 USED ON: 130502-4 USED ON: 130502-5 130502-6		1
20	452-015-9101		.. KNOB-PLASTIC SUPPLIER CODE: V64547 CONFIG CHG DATA FROM A CMM: REPLS RD381-104 USED ON: 130502-7		1
25	BP248-110		.. KNOB- SUPPLIER CODE: V81590 SPECIFICATION NUMBER: 452-016-9001 SB DATA FROM A CMM: PRE SB 21-2591 CONFIG CHG DATA FROM A CMM: REPLD BY 452-016-9001 USED ON: 130502-4 USED ON: 130502-5 130502-6		1
25	BP248-127		.. KNOB- SUPPLIER CODE: V81590 SB DATA FROM A CMM: POST SB 21-2591 CONFIG CHG DATA FROM A CMM: REPLD BY 452-016-9101 USED ON: 130502-7		1

ILLUSTRATION ITEMS NOT ON PARTS LIST ARE NOT APPLICABLE

- ITEM NOT ILLUSTRATED

HXL

21-31-01-10

BOEING PROPRIETARY - Copyright © - Unpublished Work - See title page for details.

21-31-01  
FIG. 10  
PAGE 4  
APR 22/07



**PARTS CATALOG (MAINTENANCE)**

FIG ITEM	PART NUMBER	1 2 3 4 5 6 7	NOMENCLATURE	EFFECT FROM TO	UNITS PER ASSY
10					
25	452-016-9101	..	KNOB- SUPPLIER CODE: V64547 CONFIG CHG DATA FROM A CMM: REPLS BP248-127 USED ON: 130502-7		1
30	805789-1	..	PANEL-LIGHTING SUPPLIER CODE: V70210 SB DATA FROM A CMM: PRE SB 21-2487 USED ON: 130502-4		1
30	942067-1	..	PANEL-LIGHTING SUPPLIER CODE: V64547 SB DATA FROM A CMM: PRE SB 21-2433 USED ON: 130502-6		1
30	941952-1	..	PANEL-LIGHTING SUPPLIER CODE: V70210 SB DATA FROM A CMM: POST SB 21-2433 POST SB 21-2487 PRE SB 21-2591 USED ON: 130502-5		1
30	4201649-2	..	PANEL-LIGHTING SUPPLIER CODE: V64547 SB DATA FROM A CMM: POST SB 21-2591 USED ON: 130502-7		1
- 200	286T0062-300		WIRE BUNDLE ASSY- (PRESSURIZATION CONTROL SYSTEM ONLY)		RF
205	BACC45FT18A31S	.	CONNECTOR- ELECTRICAL EQUIP NUMBER: D01324 WIRING DIAGRAM REF: 213111		1
- 250	286T0070-300		WIRE BUNDLE ASSY- (PRESSURIZATION CONTROL SYSTEM ONLY)		RF

ILLUSTRATION ITEMS NOT ON PARTS LIST ARE NOT APPLICABLE

- ITEM NOT ILLUSTRATED

HXL

**21-31-01-10**

BOEING PROPRIETARY - Copyright © - Unpublished Work - See title page for details.

21-31-01  
 FIG. 10  
 PAGE 5  
 DEC 22/07



767  
PARTS CATALOG (MAINTENANCE)

FIG ITEM	PART NUMBER	1 2 3 4 5 6 7	NOMENCLATURE	EFFECT FROM TO	UNITS PER ASSY
10 260	BACC45FT12A12S		.CONNECTOR- ELECTRICAL EQUIP NUMBER: D01408 WIRING DIAGRAM REF: 213131		1

ILLUSTRATION ITEMS NOT ON PARTS LIST ARE NOT APPLICABLE

- ITEM NOT ILLUSTRATED

HXL

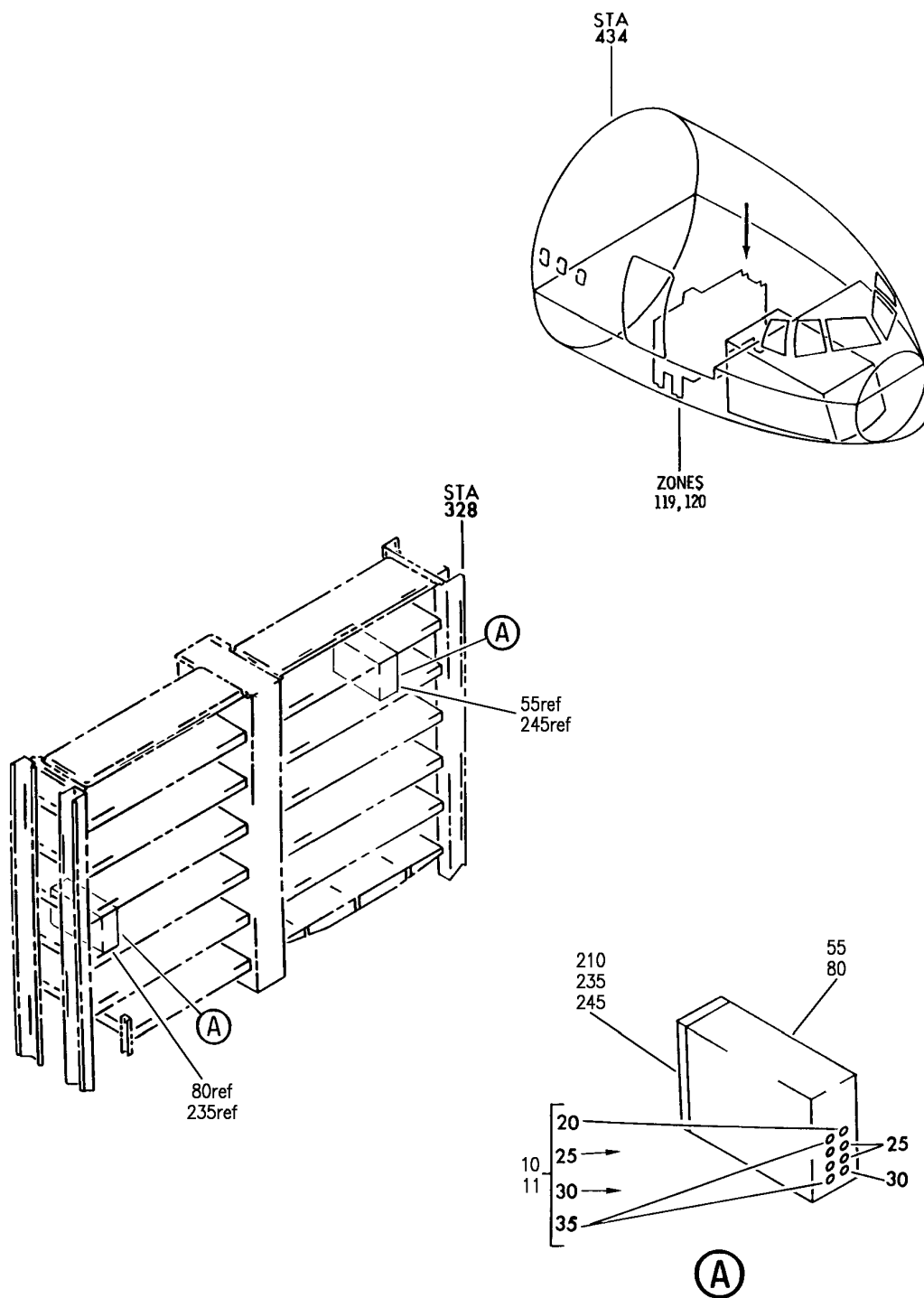
21-31-01-10

BOEING PROPRIETARY - Copyright © - Unpublished Work - See title page for details.

21-31-01  
FIG. 10  
PAGE 6  
DEC 22/07



**BOEING**  
767  
PARTS CATALOG (MAINTENANCE)



V 21310203 REV 327

EQUIPMENT INSTL-ELECT. EQPT CTR E1/E2 RACK (AIR CONDITIONING ONLY)  
FIGURE 3

**21-31-02-03**

HXL  
APR 22/08

21-31-02-03  
PAGE 0



767

PARTS CATALOG (MAINTENANCE)

FIG ITEM	PART NUMBER	1 2 3 4 5 6 7	NOMENCLATURE	EFFECT FROM TO	UNITS PER ASSY
3			EQUIPMENT INSTL-ELECT. EQPT CTR E1/E2 RACK (AIR CONDITIONING ONLY)		
- 1	284T0400-618		EQUIPMENT INSTL-ELECT. EQPT CTR E1/E2 RACK (AIR CONDITIONING ONLY) VARIABLE DRAWING REF: 284T0400-5284 FOR NHA/OTHER SYS DET SEE: 24-00-58-01J	155162	RF
- 2	284T0400-630		EQUIPMENT INSTL-ELECT. EQPT CTR E1/E2 RACK (AIR CONDITIONING ONLY) VARIABLE DRAWING REF: 284T0400-5349 284T0400-5357 FOR NHA/OTHER SYS DET SEE: 24-00-58-01J	163999	RF
10	2117388-15		.UNIT ASSY-AUTO CAB. PRESSURE CONTROLLER SUPPLIER CODE: V64547 FUNCTIONAL DESCRIPTION: CONTROLS CABIN PRESSURE BY COMMANDING A CABIN AIR OUTFLOW VALVE TO OPEN OR CLOSE TO DECREASE OR INCREASE CABIN PRESSURE SPECIFICATION NUMBER: S210T160-133 COMPONENT MAINT MANUAL REF: 21-31-48 QUALIFIED I/W DATA: CONTROLLERS S210T160-33/2117388-5, S210T160-43/ 2117388-6, S210T160-53/2117388-7, S210T160-63 -73/ 2117388-8, S210T160-83/2117388-11, S210T160-83/2117388-11, S210T160-113/ 2117388-13 AND S210T160-133/2117388-15 ARE INTERCHANGEABLE ONE WAY FORWARD, NOT INTERMIXABLE WHEN INSTALLED WITH COCKPIT		2
ILLUSTRATION ITEMS NOT ON PARTS LIST ARE NOT APPLICABLE					

- ITEM NOT ILLUSTRATED

21-31-02-03

21-31-02  
FIG. 03  
PAGE 1  
DEC 22/07

HXL



767

PARTS CATALOG (MAINTENANCE)

FIG ITEM	PART NUMBER	1 2 3 4 5 6 7 NOMENCLATURE	EFFECT FROM TO	UNITS PER ASSY
3 10		VALVES S210T160-64/ 606832-11 -12, S210T160-74/606832-13 -14, S210T160-84/606832-16, S210T160-94/606832-18 OR S210T160-114/606832-21. IF S210T160-114/606832-21 IS INSTALLED WITH S210T160-33/2117388-5, S210T160-43/2117388-6, S210T160-53/2117388-7 OR S210T160-63 -73/ 2117388-8 CONTROLLER RESULTS IN OVERSHOOT OF SELECTOR PANEL INDICATION. WHEN CONTROLLERS S210T160-83/2117388-11 OR S210T160-113/2117388-13 OR S210T160-133/2117388-15 ARE INSTALLED WITH COCKPIT VALVES S210T160-64/606832-11 -12, S210T160-74/ 606832-13 -14, S210T160-84/606832-16, OR S210T160-94/606832-18 RESULTS IN UNDERSHOOT OF SELECTOR PANEL INDICATION, S210T160-84/2117388-11, S210T160-113/2117388-13, AND S210T160-133/2117388-15 ARE PREFERRED BUT ONLY WHEN INSTALLED WITH S210T160-114/606832-21 COCKPIT VALVE. SEE 757-SL-21-050B OR 767-SL-21-064B FOR DETAILS. POST SERVICE BULLETIN: 21-0166 POST SERVICE BULLETIN: 2117388-21-4109R1		

ILLUSTRATION ITEMS NOT ON PARTS LIST ARE NOT APPLICABLE

- ITEM NOT ILLUSTRATED

21-31-02-03

21-31-02  
 FIG. 03  
 PAGE 2  
 DEC 22/07

HXL



767

PARTS CATALOG (MAINTENANCE)

FIG ITEM	PART NUMBER	1 2 3 4 5 6 7	NOMENCLATURE	EFFECT FROM TO	UNITS PER ASSY
3 10 10	2117388-13		V70210 .UNIT ASSY-AUTO CAB. PRESSURE CONT (STATIC SENSITIVE PART) SUPPLIER CODE: V64547 FUNCTIONAL DESCRIPTION: CONTROLS CABIN PRESSURE BY COMMANDING A CABIN AIR OUTFLOW VALVE TO OPEN OR CLOSE TO DECREASE OR INCREASE CABIN PRESSURE SPECIFICATION NUMBER: S210T160-113 MISCELLANEOUS DATA: 757-SL-21-050 767-SL-21-064 ELECTRICAL EQUIP NUMBER: M00118 M00119 COMPONENT MAINT MANUAL REF: 21-31-48 QUALIFIED I/W DATA: CONTROLLERS S210T160-33/2117388-5, S210T160-43/ 2117388-6, S210T160-53/2117388-7, S210T160-63 -73/ 2117388-8, S210T160-83/2117388-11, S210T160-113/ 2117388-13 AND S210T160-133/2117388-15 ARE INTERCHANGEABLE ONE WAY FORWARD, NOT INTERMIXABLE WHEN INSTALLED WITH COCKPIT VALVES S210T160-64/ 606832-11 -12, S210T160-74/606832-13 -14, S210T160-84/606832-16, S210T160-94/606832-18 OR S210T160-114/606832-21. IF S210T160-114/606832-21 IS INSTALLED WITH S210T160-33/2117388-5,		RF
ILLUSTRATION ITEMS NOT ON PARTS LIST ARE NOT APPLICABLE					

- ITEM NOT ILLUSTRATED

21-31-02-03

21-31-02  
 FIG. 03  
 PAGE 3  
 DEC 22/08

HXL



767

PARTS CATALOG (MAINTENANCE)

FIG ITEM	PART NUMBER	1 2 3 4 5 6 7 NOMENCLATURE	EFFECT FROM TO	UNITS PER ASSY
3 10		<p>S210T160-43/2117388-6, S210T160-53/2117388-7 OR S210T160-63 -73/ 2117388-8 CONTROLLER RESULTS IN OVERSHOOT OF SELECTOR PANEL INDICATION. WHEN CONTROLLERS S210T160-83/2117388-11 OR S210T160-113/2117388-13 OR S210T160-133/2117388-15 ARE INSTALLED WITH COCKPIT VALVES S210T160-64/606832-11 -12, S210T160-74/ 606832-13 -14, S210T160-84/606832-16, OR S210T160-94/606832-18 RESULTS IN UNDERSHOOT OF SELECTOR PANEL INDICATION, S210T160-84/2117388-11, S210T160-113/2117388-13, AND S210T160-133/2117388-15 ARE PREFERRED BUT ONLY WHEN INSTALLED WITH S210T160-114/606832-21 COCKPIT VALVE. SEE 757-SL-21-050B OR 767-SL-21-064B FOR DETAILS. POST SERVICE LETTER: 21-064</p>		
11	2117388-15	<p>.UNIT ASSY-AUTO CAB. PRESSURE CONT (STATIC SENSITIVE PART) SUPPLIER CODE: V64547 POSITION DATA: 1 AND 2 FUNCTIONAL DESCRIPTION: CONTROLS CABIN PRESSURE BY COMMANDING A CABIN AIR OUTFLOW VALVE TO OPEN OR CLOSE TO DECREASE OR INCREASE</p>		RF

ILLUSTRATION ITEMS NOT ON PARTS LIST ARE NOT APPLICABLE

- ITEM NOT ILLUSTRATED

21-31-02-03

21-31-02  
FIG. 03  
PAGE 4  
DEC 22/08

HXL



767

PARTS CATALOG (MAINTENANCE)

FIG ITEM	PART NUMBER	1 2 3 4 5 6 7 NOMENCLATURE	EFFECT FROM TO	UNITS PER ASSY
3 11		<p>CABIN PRESSURE            SPECIFICATION NUMBER:            S210T160-133            ELECTRICAL EQUIP NUMBER:            M00118            M00119            COMPONENT MAINT MANUAL REF:            21-31-48            QUALIFIED I/W DATA:            CONTROLLERS            S210T160-33/2117388-5,            S210T160-43/ 2117388-6,            S210T160-53/2117388-7,            S210T160-63 -73/            2117388-8,            S210T160-83/2117388-11,            S210T160-113/ 2117388-13            AND            S210T160-133/2117388-15            ARE INTERCHANGEABLE ONE            WAY FORWARD, NOT            INTERMIXABLE WHEN            INSTALLED WITH COCKPIT            VALVES S210T160-64/            606832-11 -12,            S210T160-74/606832-13            -14,            S210T160-84/606832-16,            S210T160-94/606832-18 OR            S210T160-114/606832-21.            IF            S210T160-114/606832-21            IS INSTALLED WITH            S210T160-33/2117388-5,            S210T160-43/2117388-6,            S210T160-53/2117388-7            OR S210T160-63 -73/            2117388-8 CONTROLLER            RESULTS IN OVERSHOOT OF            SELECTOR PANEL            INDICATION. WHEN            CONTROLLERS            S210T160-83/2117388-11            OR            S210T160-113/2117388-13            OR            S210T160-133/2117388-15            ARE INSTALLED WITH            COCKPIT VALVES</p>		

ILLUSTRATION ITEMS NOT ON PARTS LIST ARE NOT APPLICABLE

- ITEM NOT ILLUSTRATED

HXL

21-31-02-03

BOEING PROPRIETARY - Copyright © - Unpublished Work - See title page for details.

21-31-02  
 FIG. 03  
 PAGE 5  
 DEC 22/08



767

PARTS CATALOG (MAINTENANCE)

FIG ITEM	PART NUMBER	1 2 3 4 5 6 7 NOMENCLATURE	EFFECT FROM TO	UNITS PER ASSY
3 11		S210T160-64/606832-11 -12, S210T160-74/ 606832-13 -14, S210T160-84/606832-16, OR S210T160-94/606832-18 RESULTS IN UNDERSHOOT OF SELECTOR PANEL INDICATION, S210T160-84/2117388-11, S210T160-113/2117388-13, AND S210T160-133/2117388-15 ARE PREFERRED BUT ONLY WHEN INSTALLED WITH S210T160-114/606832-21 COCKPIT VALVE. SEE 757-SL-21-050B OR 767-SL-21-064B FOR DETAILS.		
11	2117388-15	.UNIT ASSY-AUTO CAB. PRESSURE CONT (STATIC SENSITIVE PART) SUPPLIER CODE: V64547 POSITION DATA: 1 AND 2 FUNCTIONAL DESCRIPTION: CONTROLS CABIN PRESSURE BY COMMANDING A CABIN AIR OUTFLOW VALVE TO OPEN OR CLOSE TO DECREASE OR INCREASE CABIN PRESSURE SPECIFICATION NUMBER: S210T160-133 ELECTRICAL EQUIP NUMBER: M00118 M00119 COMPONENT MAINT MANUAL REF: 21-31-48 QUALIFIED I/W DATA: CONTROLLERS S210T160-33/2117388-5, S210T160-43/ 2117388-6, S210T160-53/2117388-7, S210T160-63 -73/ 2117388-8, S210T160-83/2117388-11, S210T160-113/ 2117388-13		RF

ILLUSTRATION ITEMS NOT ON PARTS LIST ARE NOT APPLICABLE

- ITEM NOT ILLUSTRATED

HXL

21-31-02-03

BOEING PROPRIETARY - Copyright © - Unpublished Work - See title page for details.

21-31-02  
 FIG. 03  
 PAGE 6  
 DEC 22/08



767

PARTS CATALOG (MAINTENANCE)

FIG ITEM	PART NUMBER	1 2 3 4 5 6 7 NOMENCLATURE	EFFECT FROM TO	UNITS PER ASSY
3 11		<p>AND            S210T160-133/2117388-15            ARE INTERCHANGEABLE ONE            WAY FORWARD, NOT            INTERMIXABLE WHEN            INSTALLED WITH COCKPIT            VALVES S210T160-64/            606832-11 -12,            S210T160-74/606832-13            -14,            S210T160-84/606832-16,            S210T160-94/606832-18 OR            S210T160-114/606832-21.            IF            S210T160-114/606832-21            IS INSTALLED WITH            S210T160-33/2117388-5,            S210T160-43/2117388-6,            S210T160-53/2117388-7            OR S210T160-63 -73/            2117388-8 CONTROLLER            RESULTS IN OVERSHOOT OF            SELECTOR PANEL            INDICATION. WHEN            CONTROLLERS            S210T160-83/2117388-11            OR            S210T160-113/2117388-13            OR            S210T160-133/2117388-15            ARE INSTALLED WITH            COCKPIT VALVES            S210T160-64/606832-11            -12, S210T160-74/            606832-13 -14,            S210T160-84/606832-16,            OR S210T160-94/606832-18            RESULTS IN UNDERSHOOT OF            SELECTOR PANEL            INDICATION,            S210T160-84/2117388-11,            S210T160-113/2117388-13,            AND            S210T160-133/2117388-15            ARE PREFERRED BUT ONLY            WHEN INSTALLED WITH            S210T160-114/606832-21            COCKPIT VALVE. SEE            757-SL-21-050B OR</p>		

ILLUSTRATION ITEMS NOT ON PARTS LIST ARE NOT APPLICABLE

- ITEM NOT ILLUSTRATED

HXL

21-31-02-03

BOEING PROPRIETARY - Copyright © - Unpublished Work - See title page for details.

21-31-02  
 FIG. 03  
 PAGE 7  
 DEC 22/08





767

PARTS CATALOG (MAINTENANCE)

FIG ITEM	PART NUMBER	1 2 3 4 5 6 7	NOMENCLATURE	EFFECT FROM TO	UNITS PER ASSY
3					
11			767-SL-21-064B FOR DETAILS.		
20	P405WBG5HNG	..	LAMP-IND SUPPLIER CODE: V15513 ELECTRICAL EQUIP NUMBER: DS00001 OPTIONAL PART: 462-010-9201 V1EG71 USED ON: 2117388-5 2117388-6 2117388-7 2117388-11		1
20	462-010-9201	..	LAMP-IND SUPPLIER CODE: V1EG71 ELECTRICAL EQUIP NUMBER: DS00001 OPTIONAL PART: P405WBG5HNG V15513 USED ON: 2117388-5 2117388-6 2117388-7 2117388-11		1
20	559-2201-007	..	LAMP-IND SUPPLIER CODE: V1EG71 ELECTRICAL EQUIP NUMBER: DS00001 OPTIONAL PART: 462-010-9201 V1EG71 USED ON: 2117388-13 2117388-15		1

ILLUSTRATION ITEMS NOT ON PARTS LIST ARE NOT APPLICABLE

- ITEM NOT ILLUSTRATED

HXL

21-31-02-03

BOEING PROPRIETARY - Copyright © - Unpublished Work - See title page for details.

21-31-02  
FIG. 03  
PAGE 8  
DEC 22/08



767

PARTS CATALOG (MAINTENANCE)

FIG ITEM	PART NUMBER	1 2 3 4 5 6 7	NOMENCLATURE	EFFECT FROM TO	UNITS PER ASSY
3	20 462-010-9201		.. LAMP-IND SUPPLIER CODE: V1EG71 ELECTRICAL EQUIP NUMBER: DS00001 OPTIONAL PART: 559-2201-007 V1EG71 USED ON: 2117388-13 2117388-15		1
	25 P405WBR5HNR		.. LAMP-IND SUPPLIER CODE: V15513 SB DATA FROM A CMM: PRE SB 21-2580 ELECTRICAL EQUIP NUMBER: DS00002 DS00003 OPTIONAL PART: 462-010-9001 V1EG71 USED ON: 2117388-5 2117388-6 2117388-7 PRE SERVICE BULLETIN: 21-2580		2
	25 462-010-9001		.. LAMP-IND SUPPLIER CODE: V1EG71 SB DATA FROM A CMM: PRE SB-21-2580 ELECTRICAL EQUIP NUMBER: DS00002 DS00003 OPTIONAL PART: P405WBR5HNR V15513 USED ON: 2117388-5 2117388-6 2117388-7 PRE SERVICE BULLETIN: 21-2580		2

ILLUSTRATION ITEMS NOT ON PARTS LIST ARE NOT APPLICABLE

- ITEM NOT ILLUSTRATED

HXL

21-31-02-03

BOEING PROPRIETARY - Copyright © - Unpublished Work - See title page for details.

21-31-02  
 FIG. 03  
 PAGE 9  
 DEC 22/08



767

PARTS CATALOG (MAINTENANCE)

FIG ITEM	PART NUMBER	1 2 3 4 5 6 7	NOMENCLATURE	EFFECT FROM TO	UNITS PER ASSY
3					
25	559-2301-007	..	LAMP-IND SUPPLIER CODE: V1EG71 SB DATA FROM A CMM: PRE SB 21-4109 ELECTRICAL EQUIP NUMBER: DS00002 DS00003 OPTIONAL PART: 462-010-9101 V1EG71 USED ON: 2117388-13		2
25	462-010-9101	..	LAMP-IND SUPPLIER CODE: V1EG71 SB DATA FROM A CMM: PRE SB 21-4109 ELECTRICAL EQUIP NUMBER: DS00002 DS00003 OPTIONAL PART: 559-2301-007 V1EG71 USED ON: 2117388-13		2
25	559-2101-007	..	LAMP-IND SUPPLIER CODE: V1EG71 SB DATA FROM A CMM: POST SB 21-4109 ELECTRICAL EQUIP NUMBER: DS00002 DS00003 OPTIONAL PART: 462-010-9001 V1EG71 USED ON: 2117388-13		2

ILLUSTRATION ITEMS NOT ON PARTS LIST ARE NOT APPLICABLE

- ITEM NOT ILLUSTRATED

HXL

21-31-02-03

BOEING PROPRIETARY - Copyright © - Unpublished Work - See title page for details.

21-31-02  
FIG. 03  
PAGE 10  
DEC 22/08



767

PARTS CATALOG (MAINTENANCE)

FIG ITEM	PART NUMBER	1 2 3 4 5 6 7	NOMENCLATURE	EFFECT FROM TO	UNITS PER ASSY
3 25	462-010-9001		..LAMP-IND SUPPLIER CODE: V1EG71 SB DATA FROM A CMM: POST SB 21-4109 ELECTRICAL EQUIP NUMBER: DS00002 DS00002 OPTIONAL PART: 559-2101-007 V1EG71 USED ON: 2117388-13		2
30	P405WBR5HNR		..LAMP-IND SUPPLIER CODE: V15513 SB DATA FROM A CMM: PRE SB 21-2580 ELECTRICAL EQUIP NUMBER: DS00004 OPTIONAL PART: 462-010-9001 V1EG71 USED ON: 2117388-5 2117388-6 2117388-7 PRE SERVICE BULLETIN: 21-2580		1
30	462-010-9001		..LAMP-IND SUPPLIER CODE: V1EG71 SB DATA FROM A CMM: PRE SB 21-2580 ELECTRICAL EQUIP NUMBER: DS00004 OPTIONAL PART: P405WBR5HNR V15513 USED ON: 2117388-5 2117388-6 2117388-7		1

ILLUSTRATION ITEMS NOT ON PARTS LIST ARE NOT APPLICABLE

- ITEM NOT ILLUSTRATED

HXL

21-31-02-03

BOEING PROPRIETARY - Copyright © - Unpublished Work - See title page for details.

21-31-02  
 FIG. 03  
 PAGE 11  
 DEC 22/08



767

PARTS CATALOG (MAINTENANCE)

FIG ITEM	PART NUMBER	1 2 3 4 5 6 7	NOMENCLATURE	EFFECT FROM TO	UNITS PER ASSY
3					
30	559-2101-007	..	LAMP-DND SUPPLIER CODE: V1EG71 SB DATA FROM A CMM: POST SB 21-4109 ELECTRICAL EQUIP NUMBER: DS00004 OPTIONAL PART: 462-010-9001 V1EG71 USED ON: 2117388-13		1
30	462-010-9001	..	LAMP-IND SUPPLIER CODE: V1EG71 SB DATA FROM A CMM: POST SB 21-4109 ELECTRICAL EQUIP NUMBER: DS00004 OPTIONAL PART: 559-2101-007 V1EG71 USED ON: 2117388-13		1
30	559-2201-007	..	LAMP-IND SUPPLIER CODE: V1EG71 SB DATA FROM A CMM: PRE SB 21-4109 ELECTRICAL EQUIP NUMBER: DS00004 OPTIONAL PART: 462-010-9201 V1EG71 USED ON: 2117388-13		1
30	462-010-9201	..	LAMP-IND SUPPLIER CODE: V1EG71 SB DATA FROM A CMM: PRE SB 21-4109 ELECTRICAL EQUIP NUMBER: DS00004 OPTIONAL PART: 559-2201-007 V1EG71 USED ON: 2117388-13		1

ILLUSTRATION ITEMS NOT ON PARTS LIST ARE NOT APPLICABLE

- ITEM NOT ILLUSTRATED

HXL

21-31-02-03

BOEING PROPRIETARY - Copyright © - Unpublished Work - See title page for details.

21-31-02  
FIG. 03  
PAGE 12  
DEC 22/08



767

PARTS CATALOG (MAINTENANCE)

FIG ITEM	PART NUMBER	1 2 3 4 5 6 7	NOMENCLATURE	EFFECT FROM TO	UNITS PER ASSY
3					
35	P405WBR5HNR		.. LAMP-IND SUPPLIER CODE: V15513 ELECTRICAL EQUIP NUMBER: DS00005 DS00006 DS00007 DS00008 OPTIONAL PART: 462-010-9001 V1EG71 USED ON: 2117388-5 2117388-6 2117388-7 2117388-11		4
35	462-010-9001		.. LAMP-IND SUPPLIER CODE: V1EG71 ELECTRICAL EQUIP NUMBER: DS00005 DS00006 DS00007 DS00008 OPTIONAL PART: P405WBR5HNR V15513 USED ON: 2117388-5 2117388-6 2117388-7 2117388-11		4
35	559-2101-007		.. LAMP-IND SUPPLIER CODE: V1EG71 ELECTRICAL EQUIP NUMBER: DS00005 DS00006 DS00007 DS00008 OPTIONAL PART: 462-010-9001 V1EG71 USED ON: 2117388-13 2117388-15		4

ILLUSTRATION ITEMS NOT ON PARTS LIST ARE NOT APPLICABLE

- ITEM NOT ILLUSTRATED

HXL

21-31-02-03

BOEING PROPRIETARY - Copyright © - Unpublished Work - See title page for details.

21-31-02  
 FIG. 03  
 PAGE 13  
 DEC 22/08



767

PARTS CATALOG (MAINTENANCE)

FIG ITEM	PART NUMBER	1 2 3 4 5 6 7	NOMENCLATURE	EFFECT FROM TO	UNITS PER ASSY
3					
35	462-010-9001		. . LAMP-IND SUPPLIER CODE: V1EG71 ELECTRICAL EQUIP NUMBER: DS00005 DS00006 DS00007 DS00008 OPTIONAL PART: 559-2101-007 V1EG71 USED ON: 2117388-13 2117388-15		4
- 200	286T1092-120		WIRE BUNDLE ASSY-(AIR CONDITIONING ONLY)		RF
- 205	286T0014-120		WIRE BUNDLE ASSY-(AIR CONDITIONING ONLY)		RF
210	BKA11C07AA01		. CONNECTOR- SUPPLIER CODE: V71468 SPECIFICATION NUMBER: BCREFA1345 OPTIONAL PART: S611C07AA01 V59610 NIC66F11C07AA01 V00779 OVERLENGTH PART NUMBER: BACC66F11C07AA01 ELECTRICAL EQUIP NUMBER: D00462 D02712 WIRING DIAGRAM REF: 213111 213121		1

ILLUSTRATION ITEMS NOT ON PARTS LIST ARE NOT APPLICABLE

- ITEM NOT ILLUSTRATED

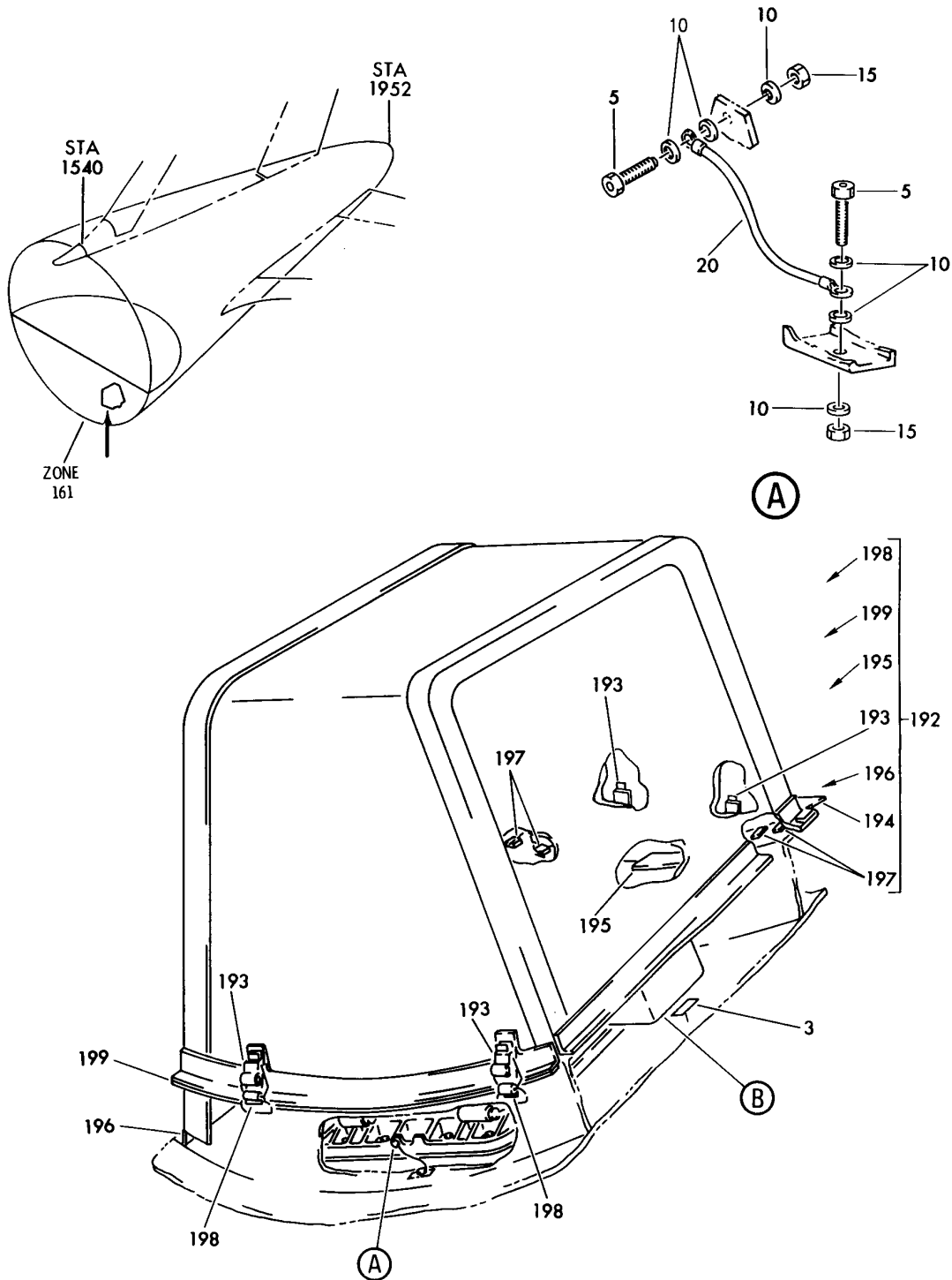
HXL

21-31-02-03

BOEING PROPRIETARY - Copyright © - Unpublished Work - See title page for details.

21-31-02  
FIG. 03  
PAGE 14  
DEC 22/08

**BOEING**  
767  
PARTS CATALOG (MAINTENANCE)



V 21310301 SHT 1 REV 314

VALVE INSTL-CAB. AIR OUTFLOW  
FIGURE 1 (SHEET 1)

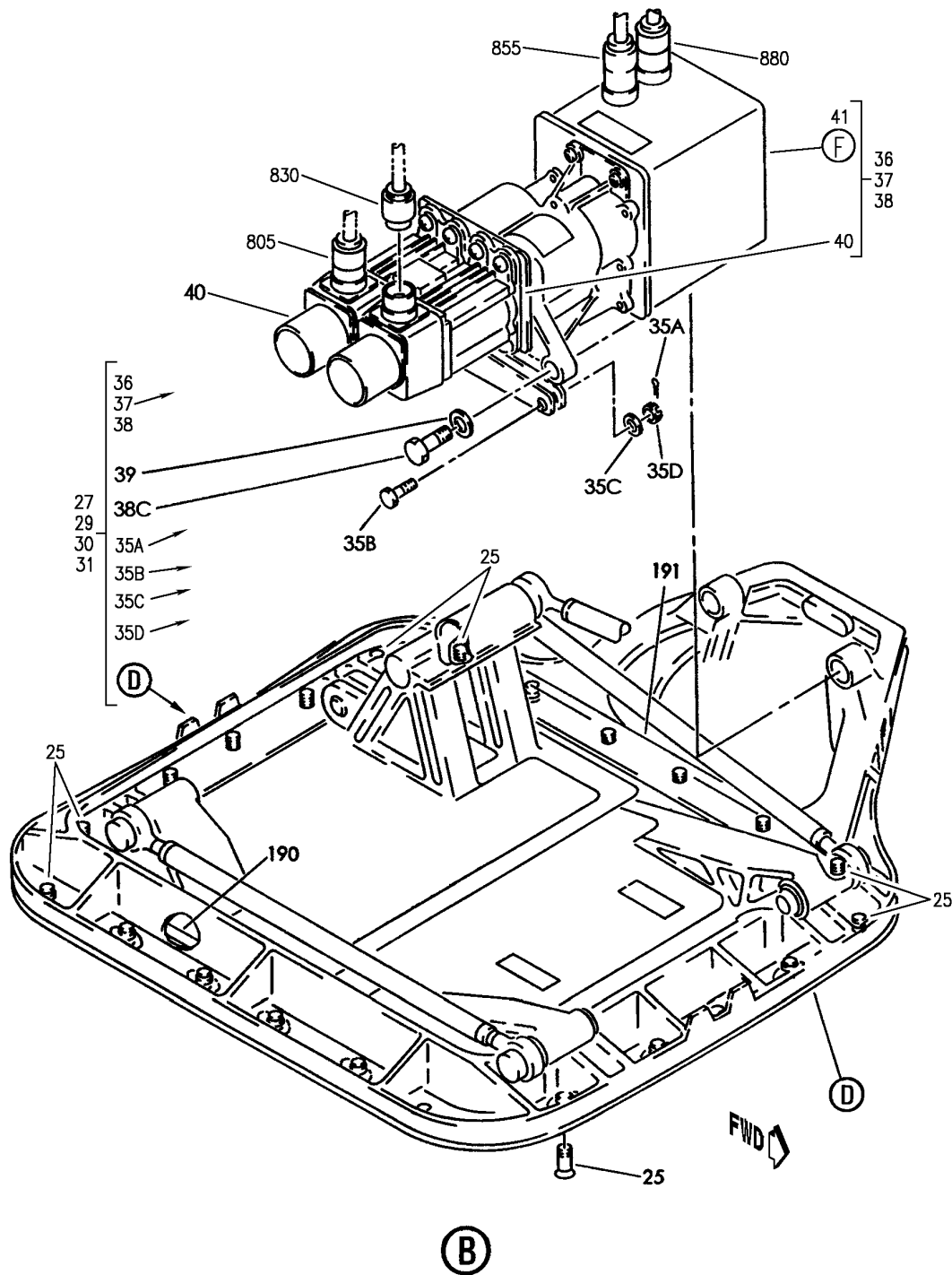
**21-31-03-01**

HXL  
APR 22/07

21-31-03-01  
PAGE 0



**BOEING**  
767  
PARTS CATALOG (MAINTENANCE)



V 21-31-03-01 SHT 2 REV 327

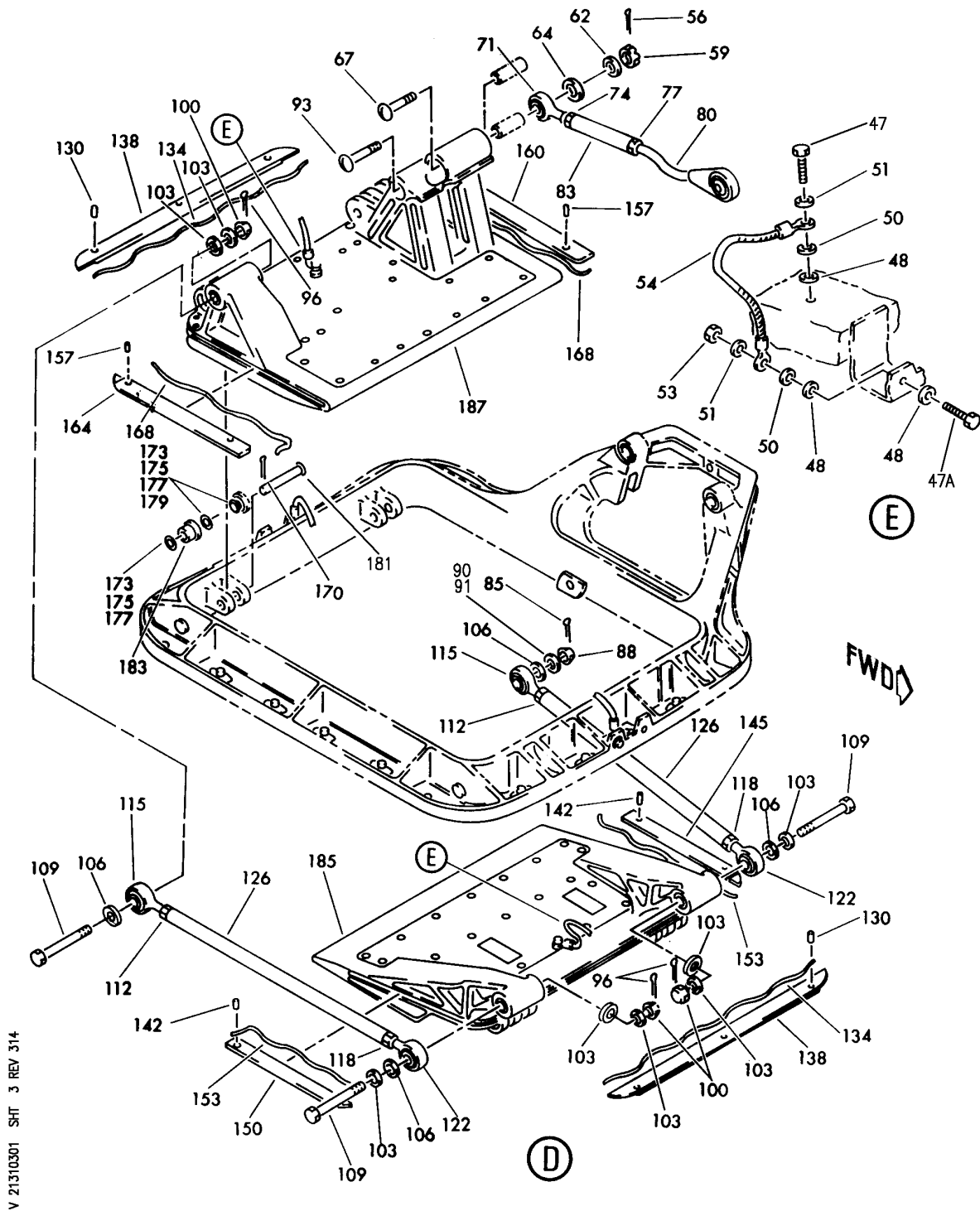
VALVE INSTL-CAB. AIR OUTFLOW  
FIGURE 1 (SHEET 2)

**21-31-03-01**

HXL  
APR 22/08

21-31-03-01  
PAGE 0A


**BOEING**  
 767  
**PARTS CATALOG (MAINTENANCE)**



V 21310301 SHT. 3 REV 314

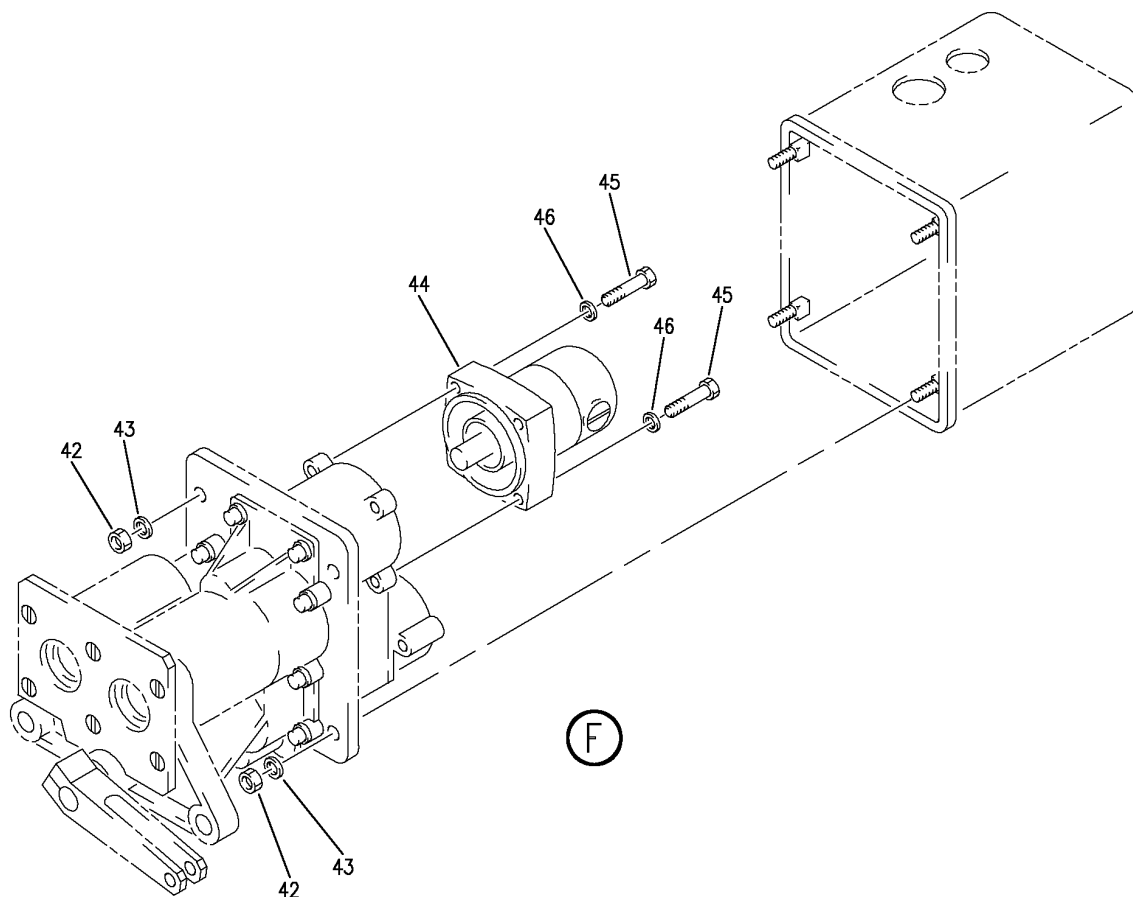
VALVE INSTL-CAB. AIR OUTFLOW  
FIGURE 1 (SHEET 3)

**21-31-03-01**

HXL  
APR 22/07

21-31-03-01  
PAGE 0B

**BOEING**  
767  
PARTS CATALOG (MAINTENANCE)



V 21310301 SH1 4 REV 265

VALVE INSTL-CAB. AIR OUTFLOW  
FIGURE 1 (SHEET 4)

HXL  
DEC 22/06

**21-31-03-01**

21-31-03-01  
PAGE 0C

**BOEING**  
767  
**PARTS CATALOG (MAINTENANCE)**

FIG ITEM	PART NUMBER	1 2 3 4 5 6 7	NOMENCLATURE	EFFECT FROM TO	UNITS PER ASSY
1			VALVE INSTL-CAB. AIR OUTFLOW		
- 1	216T1003-9		VALVE INSTL-CAB. AIR OUTFLOW FOR NHA SEE: 21-00-00-03A	163163	RF
- 1	216T1003-10		VALVE INSTL-CAB. AIR OUTFLOW FOR NHA SEE: 21-00-00-03A	155162 164999	RF
3	BAC27TEC0106		.MARKER-ALUMINUM FOIL- PLACARD CONTENT: VALVE OUTFLOW CABIN PRESS VO-15		1
5	NAS563-15		.BOLT-		2
10	AN960D10L		.WASHER-		6
15	BRH10A3		.NUT-		2
			SUPPLIER CODE: V52828 SPECIFICATION NUMBER: BACN10JC3 OPTIONAL PART: H10-3BAC V15653 NS202101-02 V80539 RMLH9075-3W V72962 VN303A02 V92215 96-02 V80539 T6S1032J V11815		
20	740A20-6		.CABLE- SUPPLIER CODE: V91812 SPECIFICATION NUMBER: BACJ40A20-6 OPTIONAL PART: TJEJ40A20-6 V33483 RBEJ20-6 V1GK47		1
25	BACB30NN4K10		.BOLT-		22

ILLUSTRATION ITEMS NOT ON PARTS LIST ARE NOT APPLICABLE

- ITEM NOT ILLUSTRATED

HXL

**21-31-03-01**

BOEING PROPRIETARY - Copyright © - Unpublished Work - See title page for details.

21-31-03  
FIG. 01  
PAGE 1  
DEC 22/08



767

PARTS CATALOG (MAINTENANCE)

FIG ITEM	PART NUMBER	1 2 3 4 5 6 7	NOMENCLATURE	EFFECT FROM TO	UNITS PER ASSY
1 30	606832-18		. VALVE ASSY-OUTFLOW SUPPLIER CODE: V70210 SPECIFICATION NUMBER: S210T160-94 MISCELLANEOUS DATA: THE 606832-18 OUTFLOW VALVE (WITH SUBCOMPONENT ACTUATOR 2022480-6) IS ACCEPTABLE TO USE WITH THE 2117388-7 CPC UNIT ONLY IF THE 2022480-6 ACTUATOR IS AT MOD RECORD (MR) 2 (I.E. REWORKED TO THE 3-PLANET GEAR ASSY). THE ORIGINAL 2022480-6 ACTUATOR HAS A SINGLE PLANET GEAR ASSY THAT IS PRONE TO BREAKAGE AND IS NOT ACCEPTABLE FOR ETOPS. COMPONENT MAINT MANUAL REF: 21-31-44 QUALIFIED I/W DATA: 606832-16 OR 660832-14 ARE I/W 606832-18 EXCEPT FOR ETOPS 606832-16 OR 660832-14 ARE I/W 606832-18 EXCEPT FOR ETOPS		1
35A	MS24665-132		..PIN-		1
35B	AN4-7		..BOLT-		1
35C	AN960-416		..WASHER-		1
35D	MS17826-4		..NUT-		1
36	2022480-11		..ACTUATOR ASSY- SUPPLIER CODE: V70210 COMPONENT MAINT MANUAL REF: 21-31-42 USED ON: 606832-18		1

ILLUSTRATION ITEMS NOT ON PARTS LIST ARE NOT APPLICABLE

- ITEM NOT ILLUSTRATED

21-31-03-01

21-31-03  
FIG. 01  
PAGE 2  
AUG 22/08

HXL



767

PARTS CATALOG (MAINTENANCE)

FIG ITEM	PART NUMBER	1 2 3 4 5 6 7	NOMENCLATURE	EFFECT FROM TO	UNITS PER ASSY
1 37	2022480-6		..ACTUATOR ASSY- SUPPLIER CODE: V70210 NOT APPROVED FOR ETOPS. MISCELLANEOUS DATA: (2022480-6 SERIES 1 MOD 2) COMPONENT MAINT MANUAL REF: 21-32-72 OPTIONAL PART: 2022480-8 V70210 2022480-9 V70210 USED ON: 606832-11 606832-12 606832-13 606832-14 606832-16 606832-18		1
37	2022480-8		..ACTUATOR ASSY- SUPPLIER CODE: V70210 NOT APPROVED FOR ETOPS. MISCELLANEOUS DATA: (REPLACES AND N/I WITH 2022480-5 PER EA 767-026) (ETOPS REQUIRED) COMPONENT MAINT MANUAL REF: 21-31-42 OPTIONAL PART: 2022480-6 V70210 2022480-9 V70210 USED ON: 606832-11 606832-12 606832-13 606832-14 606832-16 606832-18 POST AIRLINE MOD: 026 VEAA		1

ILLUSTRATION ITEMS NOT ON PARTS LIST ARE NOT APPLICABLE

- ITEM NOT ILLUSTRATED

HXL

21-31-03-01

BOEING PROPRIETARY - Copyright © - Unpublished Work - See title page for details.

21-31-03  
 FIG. 01  
 PAGE 3  
 AUG 22/08



767

PARTS CATALOG (MAINTENANCE)

FIG ITEM	PART NUMBER	1 2 3 4 5 6 7	NOMENCLATURE	EFFECT FROM TO	UNITS PER ASSY
1					
37	2022480-9		..ACTUATOR ASSY- SUPPLIER CODE: V70210 COMPONENT MAINT MANUAL REF: 21-31-42 OPTIONAL PART: 2022480-6 V70210 2022480-8 V70210 2022480-7 V70210 2022480-5 V70210 USED ON: 606832-18 QUALIFIED SB I/W DATA: (USED ON ANY 606832-XX SERIES OUTFLOW VALVE ASSY AND I/W WITH 2022480-6S1 M2 PER B767/IPC/21-001)		1
38	2022480-10		..ACTUATOR ASSY- SUPPLIER CODE: V70210 COMPONENT MAINT MANUAL REF: 21-31-42 USED ON: 606832-18 ATTACHING PARTS		1
38C	AN4H12A		..BOLT-		2
39	AN960-416		..WASHER-		2
			-----*-----		
40	2022478-3		...MOTOR ASSY-AC SUPPLIER CODE: V70210 COMPONENT MAINT MANUAL REF: 21-31-34 USED ON: 2022480-6 2022480-7 2022480-8 POST SERVICE BULLETIN: 2022478-21-2411 V70210 FOR DETAILS SEE: 21-31-05-02		2
ILLUSTRATION ITEMS NOT ON PARTS LIST ARE NOT APPLICABLE					

- ITEM NOT ILLUSTRATED

21-31-03-01

21-31-03  
 FIG. 01  
 PAGE 4  
 AUG 22/08

HXL



767

PARTS CATALOG (MAINTENANCE)

FIG ITEM	PART NUMBER	1 2 3 4 5 6 7	NOMENCLATURE	EFFECT FROM TO	UNITS PER ASSY
1					
40	2022478-4		...MOTOR ASSY-AC SUPPLIER CODE: V70210 COMPONENT MAINT MANUAL REF: 21-31-34 OPTIONAL PART: 2022478-5 V70210 USED ON: 2022480-9 2022480-10 FOR DETAILS SEE: 21-31-05-02		2
40	2022478-5		...MOTOR ASSY-AC SUPPLIER CODE: V70210 COMPONENT MAINT MANUAL REF: 21-31-34 OPTIONAL PART: 2022478-4 V70210 FOR DETAILS SEE: 21-31-05-02		2
41	2022481-14		...GEARBOX ASSY- SUPPLIER CODE: V70210 USED ON: 2022480-6		1
41	2022481-18		...GEARBOX ASSY- SUPPLIER CODE: V70210 USED ON: 2022480-8		1
41	2022481-20		...GEARBOX ASSY- SUPPLIER CODE: V70210 USED ON: 2022480-9		1
41	2022481-22		...GEARBOX ASSY- SUPPLIER CODE: V70210 USED ON: 2022480-10		1
41	2022481-24		...GEARBOX ASSY- SUPPLIER CODE: V70210 USED ON: 2022480-11		1
42	MS21083N06		.....NUT		4

ILLUSTRATION ITEMS NOT ON PARTS LIST ARE NOT APPLICABLE

- ITEM NOT ILLUSTRATED

21-31-03-01

21-31-03  
FIG. 01  
PAGE 5  
AUG 22/08

HXL





767

PARTS CATALOG (MAINTENANCE)

FIG ITEM	PART NUMBER	1 2 3 4 5 6 7	NOMENCLATURE	EFFECT FROM TO	UNITS PER ASSY
1					
43	AN960-6	....	WASHER		4
44	2022506-5	....	MOTOR-DC		1
			SUPPLIER CODE: V70210		
			USED ON: 2022481-14 2022481-16 2022481-18		
44	2022506-6	....	MOTOR-DC		1
			SUPPLIER CODE: V70210		
			USED ON: 2022481-20 2022481-22 2022481-24		
			ATTACHING PARTS		
45	MS35265-34	....	SCREW		4
46	AN960-6	....	WASHER		4
			-----*-----		
47	AN3-3A	..	BOLT		2
47A	AN3-5A	..	BOLT		2
48	AN960D10L	..	WASHER		6
50	AN960-10L	..	WASHER		4
51	MS35338-43	..	WASHER		4
53	NAS679A3	..	NUT		2
54	MS25083-2BB7	..	LEAD-		2
56	MS24665-283	..	PIN		1
59	MS17826-6	..	NUT		1
62	S8157N74-010	..	WASHER-		AR
			SUPPLIER CODE: V70210		
64	S8157N267-063	..	WASHER-		1
			SUPPLIER CODE: V70210		
			USED ON: 606832-11 606832-12 606832-18		
67	AN26-31	..	BOLT-		1
			USED ON: 606832-11 606832-12 606832-13 606832-14 606832-16 606832-18		
71	M81935-1-6L	..	ROD END		1
74	NAS509L6	..	NUT		1
77	NAS509-6	..	NUT		1

ILLUSTRATION ITEMS NOT ON PARTS LIST ARE NOT APPLICABLE

- ITEM NOT ILLUSTRATED

21-31-03-01

21-31-03  
FIG. 01  
PAGE 6  
AUG 22/08

HXL



767

PARTS CATALOG (MAINTENANCE)

FIG ITEM	PART NUMBER	1 2 3 4 5 6 7	NOMENCLATURE	EFFECT FROM TO	UNITS PER ASSY
1					
80	606817-2		.. BEARING ASSY-ROD END SUPPLIER CODE: V70210		1
83	645034-1		.. ROD ASSY-PUSH SUPPLIER CODE: V70210		1
85	MS24665-132		.. PIN		1
88	MS17826-5		.. NUT		1
90	S8154-197C010		.. WASHER- SUPPLIER CODE: V70210		AR
91	S8157N151-062		.. WASHER- SUPPLIER CODE: V70210 USED ON: 606832-11 606832-12 606832-13 606832-14 606832-16 606832-18		1
93	AN25-30		.. BOLT- USED ON: 606832-11 606832-12 606832-13 606832-14 606832-16 606832-18		1
96	MS24665-132		.. PIN		3
100	MS17826-5		.. NUT		3
103	AN960-516		.. WASHER		8
106	S8157N151-062		.. WASHER- SUPPLIER CODE: V70210 USED ON: 606832-11 606832-12 606832-13 606832-14 606832-16 606832-18		4
109	AN5-24		.. BOLT		3
112	NAS509L5		.. NUT		2
115	M81935-1-5L		.. ROD END		2
118	NAS509-5		.. NUT		2
122	M81935-1-5		.. ROD END		2

ILLUSTRATION ITEMS NOT ON PARTS LIST ARE NOT APPLICABLE

- ITEM NOT ILLUSTRATED

HXL

21-31-03-01

BOEING PROPRIETARY - Copyright © - Unpublished Work - See title page for details.

21-31-03  
FIG. 01  
PAGE 7  
AUG 22/08



767

PARTS CATALOG (MAINTENANCE)

FIG ITEM	PART NUMBER	1 2 3 4 5 6 7	NOMENCLATURE	EFFECT FROM TO	UNITS PER ASSY
1					
126	606997-4		.. ROD ASSY-PUSH SUPPLIER CODE: V70210 USED ON: 606832-11 606832-12 606832-13 606832-14 606832-16 606832-18		2
130	MS16562-3		.. PIN		6
134	606996-1		.. SPRING-DOOR SEAL BACK SUPPLIER CODE: V70210		2
138	606989-1		.. SEAL-BACK SUPPLIER CODE: V70210		2
142	MS16562-3		.. PIN		4
145	606969-1		.. SEAL-DOOR SUPPLIER CODE: V70210 POSITION DATA: FWD		1
150	606969-2		.. SEAL-DOOR SUPPLIER CODE: V70210 POSITION DATA: FWD		1
153	606995-1		.. SPRING-DOOR SEAL SUPPLIER CODE: V70210 POSITION DATA: FWD		2
157	MS16562-3		.. PIN		4
160	606988-1		.. SEAL-DOOR SUPPLIER CODE: V70210 POSITION DATA: AFT		1
164	606988-2		.. SEAL-DOOR SUPPLIER CODE: V70210 POSITION DATA: AFT		1
168	606994-1		.. SPRING-DOOR SEAL SUPPLIER CODE: V70210 POSITION DATA: AFT		2

ILLUSTRATION ITEMS NOT ON PARTS LIST ARE NOT APPLICABLE

- ITEM NOT ILLUSTRATED

21-31-03-01

21-31-03  
FIG. 01  
PAGE 8  
AUG 22/08

HXL

BOEING PROPRIETARY - Copyright © - Unpublished Work - See title page for details.



767

PARTS CATALOG (MAINTENANCE)

FIG ITEM	PART NUMBER	1 2 3 4 5 6 7	NOMENCLATURE	EFFECT FROM TO	UNITS PER ASSY
1					
170	MS24665-298	..	PIN		4
173	S8157N404-010	..	WASHER- SUPPLIER CODE: V70210		AR
175	S8157N404-020	..	WASHER- SUPPLIER CODE: V70210		AR
177	S8157N404-030	..	WASHER- SUPPLIER CODE: V70210		AR
179	S8157N404-005	..	WASHER- SUPPLIER CODE: V70210		AR
181	606807-1	..	PIN-STRAIGHT HEAD SUPPLIER CODE: V70210		4
183	606829-1	..	BUSHING- SUPPLIER CODE: V70210		4
185	606826-2	..	DOOR ASSY- SUPPLIER CODE: V70210 POSITION DATA: FWD OPTIONAL PART: 645123-1 V70210		1
185	645123-1	..	DOOR ASSY- SUPPLIER CODE: V70210 POSITION DATA: FWD OPTIONAL PART: 606826-2 V70210		1
185	606826-3	..	DOOR ASSY- SUPPLIER CODE: V70210 POSITION DATA: FWD		1
187	606827-1	..	DOOR ASSY- SUPPLIER CODE: V70210 POSITION DATA: AFT		1
190	606794-1	...	SEAL- SUPPLIER CODE: V70210		1
191	216T1401-1	.	GASKET-		1

ILLUSTRATION ITEMS NOT ON PARTS LIST ARE NOT APPLICABLE

- ITEM NOT ILLUSTRATED

21-31-03-01

21-31-03  
FIG. 01  
PAGE 9  
AUG 22/08

HXL

BOEING PROPRIETARY - Copyright © - Unpublished Work - See title page for details.



767

PARTS CATALOG (MAINTENANCE)

FIG ITEM	PART NUMBER	1 2 3 4 5 6 7	NOMENCLATURE	EFFECT FROM TO	UNITS PER ASSY
1					
- 800	286T1354-001		WIRE BUNDLE ASSY		RF
805	BACC45FT12D12S		.CONNECTOR- ELECTRICAL EQUIP NUMBER: D03196 WIRING DIAGRAM REF: 213111		1
- 825	286T1358-001		WIRE BUNDLE ASSY		RF
830	BACC45FT12D12S		.CONNECTOR- ELECTRICAL EQUIP NUMBER: D03148 WIRING DIAGRAM REF: 213121		1
- 850	286T0978-300		WIRE BUNDLE ASSY		RF
855	BACC45FT12B12S7		.CONNECTOR- ELECTRICAL EQUIP NUMBER: D00704 WIRING DIAGRAM REF: 213111		1
- 875	286T0998-300		WIRE BUNDLE ASSY		RF
880	BACC45FT10D5S		.CONNECTOR- ELECTRICAL EQUIP NUMBER: D00744 WIRING DIAGRAM REF: 213111		1
ILLUSTRATION ITEMS NOT ON PARTS LIST ARE NOT APPLICABLE					

- ITEM NOT ILLUSTRATED

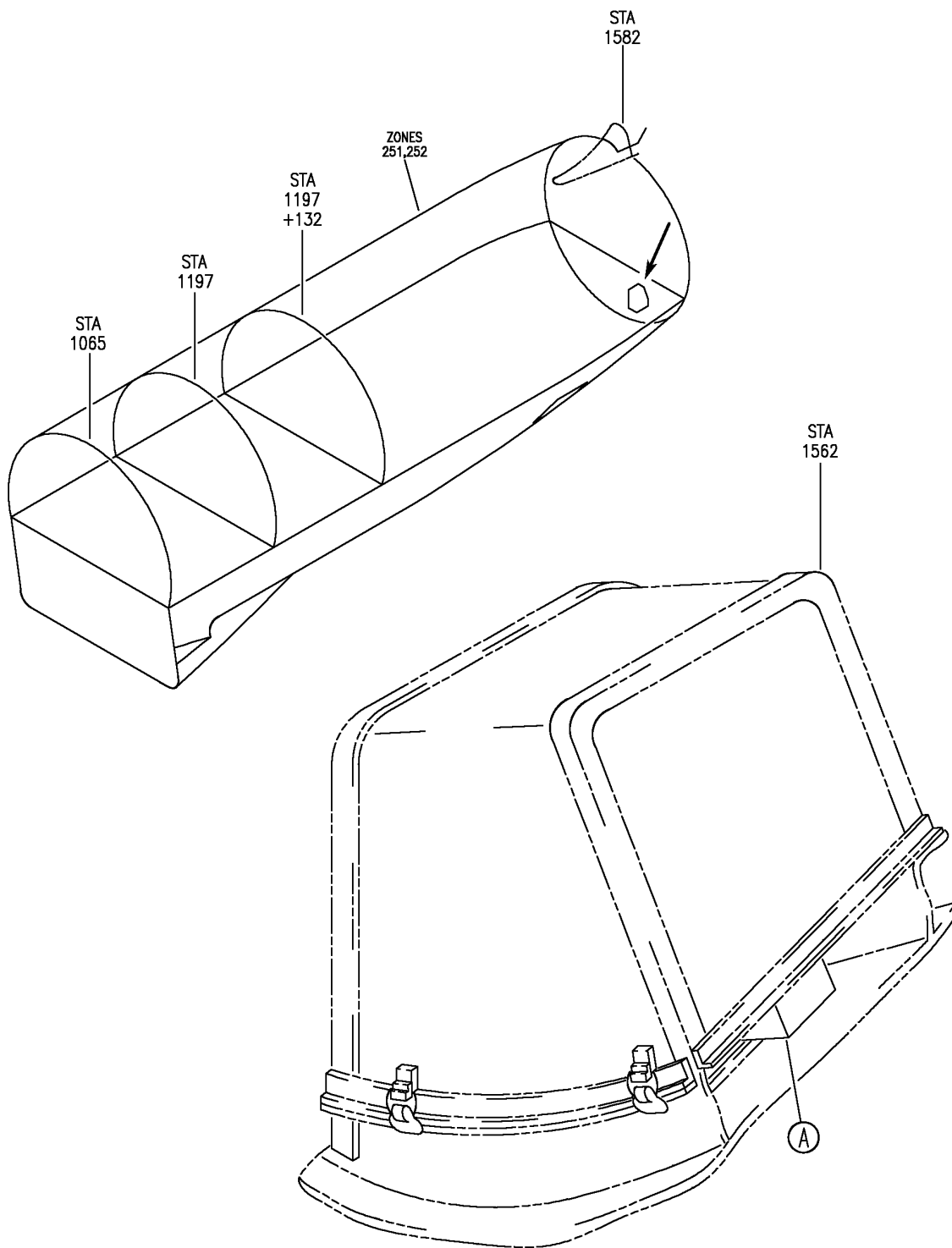
HXL

21-31-03-01

BOEING PROPRIETARY - Copyright © - Unpublished Work - See title page for details.

21-31-03  
FIG. 01  
PAGE 10  
AUG 22/08

**BOEING**  
767  
PARTS CATALOG (MAINTENANCE)



V 21310502 SH1 1 REV 337

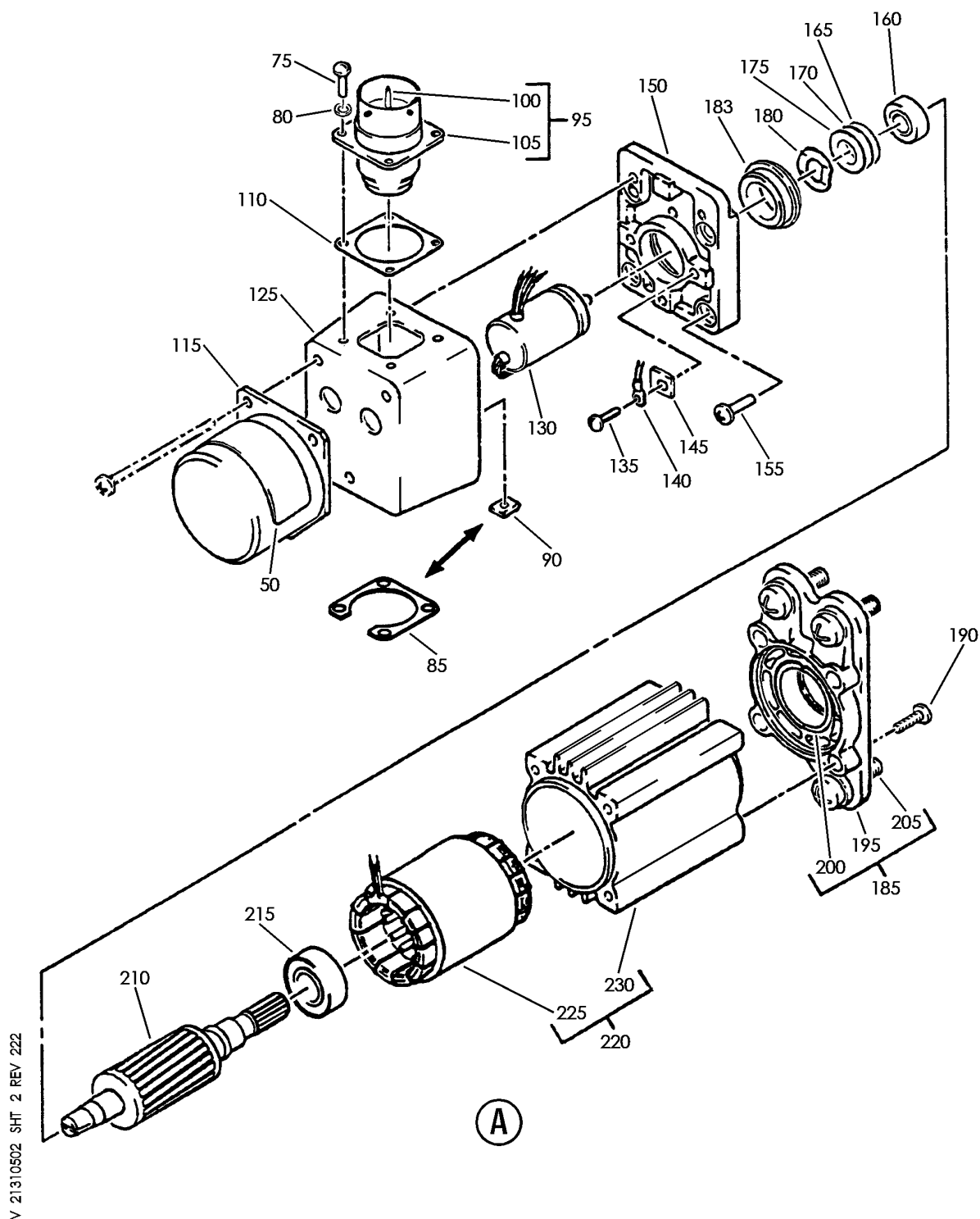
MOTOR ASSY-AC OUTFLOW VALVE ACTR  
FIGURE 2 (SHEET 1)

**21-31-05-02**

HXL  
APR 22/09

21-31-05-02  
PAGE 0

**BOEING**  
767  
PARTS CATALOG (MAINTENANCE)



V 21310502 SHT 2 REV 222

MOTOR ASSY-AC OUTFLOW VALVE ACTR  
FIGURE 2 (SHEET 2)

**21-31-05-02**

HXL  
DEC 22/06

21-31-05-02  
PAGE 0A



767

PARTS CATALOG (MAINTENANCE)

FIG ITEM	PART NUMBER	1 2 3 4 5 6 7	NOMENCLATURE	EFFECT FROM TO	UNITS PER ASSY
2			MOTOR ASSY-AC OUTFLOW VALVE ACTR		
- 10	2022478-3		MOTOR ASSY-AC OUTFLOW VALVE ACTR SUPPLIER CODE: V70210 COMPONENT MAINT MANUAL REF: 21-31-34 USED ON: 2022480-6 2022480-7 2022480-8 POST SERVICE BULLETIN: 2022478-21-2411 V70210 FOR NHA SEE: 21-31-03-01		RF
- 15	2022478-4		MOTOR ASSY-AC OUTFLOW VALVE ACTR SUPPLIER CODE: V70210 COMPONENT MAINT MANUAL REF: 21-31-34 OPTIONAL PART: 2022478-5 V70210 USED ON: 2022480-9 2022480-10 FOR NHA SEE: 21-31-03-01		RF
- 20	2022478-5		MOTOR ASSY-AC OUTFLOW VALVE ACTR SUPPLIER CODE: V70210 COMPONENT MAINT MANUAL REF: 21-31-34 OPTIONAL PART: 2022478-4 V70210 USED ON: 2022480-9 2022480-10 FOR NHA SEE: 21-31-03-01		RF

ILLUSTRATION ITEMS NOT ON PARTS LIST ARE NOT APPLICABLE

- ITEM NOT ILLUSTRATED

HXL

21-31-05-02

BOEING PROPRIETARY - Copyright © - Unpublished Work - See title page for details.

21-31-05  
FIG. 02  
PAGE 1  
AUG 22/08





767

PARTS CATALOG (MAINTENANCE)

FIG ITEM	PART NUMBER	1 2 3 4 5 6 7	NOMENCLATURE	EFFECT FROM TO	UNITS PER ASSY
2					
- 35	2022479-3		.MOTOR ASSY- SUPPLIER CODE: V70210 USED ON: 2022478-3		1
- 40	2022479-4		.MOTOR ASSY- SUPPLIER CODE: V70210 USED ON: 2022478-4		1
- 45	2022479-5		.MOTOR ASSY- SUPPLIER CODE: V70210 USED ON: 2022478-5		1
- 60	2047488-3		..PLATE- SUPPLIER CODE: V70210 USED ON: 2022479-3		1
- 65	2047488-4		..PLATE- SUPPLIER CODE: V70210 USED ON: 2022479-4		1
- 70	2047488-6		..PLATE- SUPPLIER CODE: V70210 USED ON: 2022479-5		1
75	MS35206-215		..SCREW- USED ON: 2022479-3		4
75	MS35206-215		..SCREW- USED ON: 2022479-4 2022479-5		4
80	NAS620-4L		..WASHER- USED ON: 2022479-3		4
80	NAS620-4L		..WASHER- USED ON: 2022479-4 2022479-5		4

ILLUSTRATION ITEMS NOT ON PARTS LIST ARE NOT APPLICABLE

- ITEM NOT ILLUSTRATED

21-31-05-02

21-31-05  
FIG. 02  
PAGE 2  
DEC 22/08

HXL



767

PARTS CATALOG (MAINTENANCE)

FIG ITEM	PART NUMBER	1 2 3 4 5 6 7	NOMENCLATURE	EFFECT FROM TO	UNITS PER ASSY
2					
85	M85525-2-12A	..	FLANGE-MTG SUPPLIER CODE: V70210 QUALIFIED OPTIONAL DATA: (1) QTY. M85528-2-12A IS OPTIONAL TO (4) QTY. SELF-LOCKING NUT USED ON: 2022479-1 2022479-2 2022479-3		1
85	M85525-2-12A	..	FLANGE-MTG SUPPLIER CODE: V70210 OPTIONAL PART: 293162 V76530 USED ON: 2022479-4		1
85	M85525-2-12A	..	FLANGE-MTG SUPPLIER CODE: V70210 USED ON: 2022479-5		1
90	293162	..	NUT- SUPPLIER CODE: V60119 QUALIFIED OPTIONAL DATA: (1) QTY, M85528-2-12A FLANGE IS OPTIONAL TO (4) QTY SELF-LOCKING NUT USED ON: 2022479-1 2022479-2 2022479-3		4
90	293162	..	NUT- SUPPLIER CODE: V60119 OPTIONAL PART: M85528-2-12A V70210 USED ON: 2022479-4		4
95	606668-6	..	CONNECTOR ASSY- SUPPLIER CODE: V70210 USED ON: 2022479-3		1

ILLUSTRATION ITEMS NOT ON PARTS LIST ARE NOT APPLICABLE

- ITEM NOT ILLUSTRATED

21-31-05-02

21-31-05  
FIG. 02  
PAGE 3  
DEC 22/08

HXL

 **BOEING**  
767  
**PARTS CATALOG (MAINTENANCE)**

FIG ITEM	PART NUMBER	1 2 3 4 5 6 7	NOMENCLATURE	EFFECT FROM TO	UNITS PER ASSY
2 95	606668-6		.. CONNECTOR ASSY- SUPPLIER CODE: V70210 USED ON: 2022479-4 2022479-5		1
100	48-2335-02		... CONTACT-ELEC SUPPLIER CODE: V02660 OPTIONAL PART: LRM20W16F74 V09922 ZL4020-36LT V49367 417-2020-901 V55104		12
100	LRM20W16F74		... CONTACT-ELEC SUPPLIER CODE: V09922 OPTIONAL PART: ZL4020-36LT V49367 417-2020-901 V55104 48-2335-02 V02660		12
100	ZL20W16F74		... CONTACT-ELEC SUPPLIER CODE: V49367 OPTIONAL PART: LRM20W16F74 V09922 417-2020-901 V55104 48-2335-02 V02660		12
100	417-2020-901		... CONTACT-ELEC SUPPLIER CODE: V55104 OPTIONAL PART: LRM20W16F74 V09922 ZL4020-36LT V49367 48-2335-02 V02660		12

ILLUSTRATION ITEMS NOT ON PARTS LIST ARE NOT APPLICABLE

— ITEM NOT ILLUSTRATED

HXL

# 21-31-05-02

BOEING PROPRIETARY - Copyright © - Unpublished Work - See title page for details.

21-31-05  
FIG. 02  
PAGE 4  
DEC 22/08



767

PARTS CATALOG (MAINTENANCE)

FIG ITEM	PART NUMBER	1 2 3 4 5 6 7	NOMENCLATURE	EFFECT FROM TO	UNITS PER ASSY
2 100	48-2335-02		...CONTACT-ELEC SUPPLIER CODE: V02660 OPTIONAL PART: LRM20W16F74 V09922 ZL4020-36LT V49367 417-2020-901 V55104		12
100	LRM20W16F74		...CONTACT-ELEC SUPPLIER CODE: V09922 OPTIONAL PART: ZL4020-36LT V49367 417-2020-901 V55104 48-2335-02 V02660		12
100	ZL20W16F74		...CONTACT-ELEC SUPPLIER CODE: V49367 OPTIONAL PART: LRM20W16F74 V09922 417-2020-901 V55104 48-2335-02 V02660		12
100	417-2020-901		...CONTACT-ELEC SUPPLIER CODE: V55104 OPTIONAL PART: LRM20W16F74 V09922 ZL4020-36LT V49367 48-2335-02 V02660		12
105	GAREF613		...CONNECTOR-RCPT SUPPLIER CODE: V96906		1
105	GAREF613		...CONNECTOR-RCPT SUPPLIER CODE: V96906		1

ILLUSTRATION ITEMS NOT ON PARTS LIST ARE NOT APPLICABLE

- ITEM NOT ILLUSTRATED

HXL

21-31-05-02

BOEING PROPRIETARY - Copyright © - Unpublished Work - See title page for details.

21-31-05  
FIG. 02  
PAGE 5  
DEC 22/08



767

PARTS CATALOG (MAINTENANCE)

FIG ITEM	PART NUMBER	1 2 3 4 5 6 7	NOMENCLATURE	EFFECT FROM TO	UNITS PER ASSY
2					
110	S8244-3AD060	..	GASKET- SUPPLIER CODE: V70210 OPTIONAL PART: M83528-004K009		1
110	S8244-3AD060	..	GASKET- SUPPLIER CODE: V70210 OPTIONAL PART: M83528-004K009 V70210 USED ON: 2022479-4		1
110	S8244-3AD060	..	GASKET- SUPPLIER CODE: V70210 USED ON: 2022479-5		1
110	M83528-004K009	..	GASKET- SUPPLIER CODE: V70210 OPTIONAL PART: S8244-3AD060 V70210		1
110	M83528-004K009	..	GASKET- SUPPLIER CODE: V70210 OPTIONAL PART: S8244-3AD060 V70210 USED ON: 2022479-4		1
115	2047486-3	..	CAPACITOR- SUPPLIER CODE: V70210 USED ON: 2022479-3		1
115	2047486-3	..	CAPACITOR- SUPPLIER CODE: V70210 USED ON: 2022479-4 2022479-5		1
- 120	MS35206-237	..	ATTACHING PARTS SCREW- USED ON: 2022479-3		3

ILLUSTRATION ITEMS NOT ON PARTS LIST ARE NOT APPLICABLE

- ITEM NOT ILLUSTRATED

HXL

21-31-05-02

BOEING PROPRIETARY - Copyright © - Unpublished Work - See title page for details.

21-31-05  
FIG. 02  
PAGE 6  
DEC 22/08

 **BOEING**  
767  
**PARTS CATALOG (MAINTENANCE)**

FIG ITEM	PART NUMBER	1 2 3 4 5 6 7	NOMENCLATURE	EFFECT FROM TO	UNITS PER ASSY
2 - 120	MS35206-237		.. SCREW- USED ON: 2022479-4 2022479-5 -----*-----		3
125	2047453-1		.. BOX-CONN. SUPPLIER CODE: V70210 USED ON: 2022479-3		1
125	2047453-1		.. BOX-CONN. SUPPLIER CODE: V70210 USED ON: 2022479-4 2022479-5		1
130	U221991		.. GENERATOR- SUPPLIER CODE: V82686 USED ON: 2022479-3		1
130	U221991		.. GENERATOR- SUPPLIER CODE: V82686 USED ON: 2022479-4 2022479-5		1
135	MS35206-215		.. SCREW- USED ON: 2022479-3		2
135	MS35206-215		.. SCREW- USED ON: 2022479-4 2022479-5		2
140	2104-04-00		.. LUG-TERM. SUPPLIER CODE: V78189 USED ON: 2022479-3		1
140	2104-04-00		.. LUG-TERM. SUPPLIER CODE: V78189 USED ON: 2022479-4 2022479-5		1

ILLUSTRATION ITEMS NOT ON PARTS LIST ARE NOT APPLICABLE

- ITEM NOT ILLUSTRATED

HXL

21-31-05-02

BOEING PROPRIETARY - Copyright © - Unpublished Work - See title page for details.

21-31-05  
FIG. 02  
PAGE 7  
DEC 22/08

**BOEING**  
767  
**PARTS CATALOG (MAINTENANCE)**

FIG ITEM	PART NUMBER	1 2 3 4 5 6 7	NOMENCLATURE	EFFECT FROM TO	UNITS PER ASSY
2					
145	2047487-1		..RETAINER- SUPPLIER CODE: V70210 USED ON: 2022479-3		2
145	2047487-1		..RETAINER- SUPPLIER CODE: V70210 USED ON: 2022479-4 2022479-5		2
150	2047474-1		..BELL-END SUPPLIER CODE: V70210 USED ON: 2022479-3		1
150	2047474-1		..BELL-END SUPPLIER CODE: V70210 USED ON: 2022479-4 2022479-5		1
155	MS24693C51		ATTACHING PARTS ..SCREW- USED ON: 2022479-3		4
155	MS24693C51		..SCREW- USED ON: 2022479-4 2022479-5		4
160	SR41PPK49-274		-----*----- ..BEARING- SUPPLIER CODE: V83086 OPTIONAL PART: SS77R4LR1MV V43334 GAREF612 V50294 USED ON: 2022479-3		1

ILLUSTRATION ITEMS NOT ON PARTS LIST ARE NOT APPLICABLE

- ITEM NOT ILLUSTRATED

HXL

21-31-05-02

BOEING PROPRIETARY - Copyright © - Unpublished Work - See title page for details.

21-31-05  
FIG. 02  
PAGE 8  
DEC 22/08



767

PARTS CATALOG (MAINTENANCE)

FIG ITEM	PART NUMBER	1 2 3 4 5 6 7	NOMENCLATURE	EFFECT FROM TO	UNITS PER ASSY
2 160	SS77R4LR1MV		.. BEARING- SUPPLIER CODE: V43334 OPTIONAL PART: SR41PPK49-274 V83086 GAREF612 V50294 USED ON: 2022479-3		1
160	GAREF612		.. BEARING- SUPPLIER CODE: V50294 OPTIONAL PART: SR41PPK49-274 V83086 SSS77R4LR1MV V43334 USED ON: 2022479-3		1
160	SR41PPK49-274		.. BEARING- SUPPLIER CODE: V83086 OPTIONAL PART: SS77R4LR1MV V43334 GAREF612 V50294 USED ON: 2022479-4 2022479-5		1
160	SS77R4LR1MV		.. BEARING- SUPPLIER CODE: V43334 OPTIONAL PART: SR41PPK49-274 V83086 GAREF612 V50294 USED ON: 2022479-4 2022479-5		1

ILLUSTRATION ITEMS NOT ON PARTS LIST ARE NOT APPLICABLE

- ITEM NOT ILLUSTRATED

HXL

21-31-05-02

BOEING PROPRIETARY - Copyright © - Unpublished Work - See title page for details.

21-31-05  
FIG. 02  
PAGE 9  
DEC 22/08





767

PARTS CATALOG (MAINTENANCE)

FIG ITEM	PART NUMBER	1 2 3 4 5 6 7	NOMENCLATURE	EFFECT FROM TO	UNITS PER ASSY
2 160	GAREF612		.. BEARING- SUPPLIER CODE: V50294 OPTIONAL PART: SR41PPK49-274 V83086 SSS77R4LR1MV V43334 USED ON: 2022479-4 2022479-5		1
165	S8154-134C010		.. WASHER- SUPPLIER CODE: V70210 USED ON: 2022479-3		1
165	S8154-134C010		.. WASHER- SUPPLIER CODE: V70210 USED ON: 2022479-4 2022479-5		1
170	S8154-134C005		.. WASHER- SUPPLIER CODE: V70210 USED ON: 2022479-3		1
170	S8154-134C005		.. WASHER- SUPPLIER CODE: V70210 USED ON: 2022479-4 2022479-5		1
175	S8154-134C002		.. WASHER- SUPPLIER CODE: V70210 USED ON: 2022479-3		1
175	S8154-134C002		.. WASHER- SUPPLIER CODE: V70210 USED ON: 2022479-4 2022479-5		1
180	W0618-008		.. WASHER- SUPPLIER CODE: V92830 USED ON: 2022479-3		1

ILLUSTRATION ITEMS NOT ON PARTS LIST ARE NOT APPLICABLE

- ITEM NOT ILLUSTRATED

21-31-05-02

21-31-05  
FIG. 02  
PAGE 10  
DEC 22/08

HXL

**BOEING**  
767  
**PARTS CATALOG (MAINTENANCE)**

FIG ITEM	PART NUMBER	1 2 3 4 5 6 7	NOMENCLATURE	EFFECT FROM TO	UNITS PER ASSY
2 180	W0618-008		.. WASHER- SUPPLIER CODE: V92830 USED ON: 2022479-4 2022479-5		1
183	2047483-1		.. INSERT- SUPPLIER CODE: V70210 USED ON: 2022479-3		1
183	2047483-1		.. INSERT- SUPPLIER CODE: V70210 USED ON: 2022479-4 2022479-5		1
185	2047484-1		.. BELL ASSY-END SUPPLIER CODE: V70210 USED ON: 2022479-3		1
185	2047484-1		.. BELL ASSY-END SUPPLIER CODE: V70210 USED ON: 2022479-4 2022479-5		1
190	MS24693C51		ATTACHING PARTS .. SCREW- USED ON: 2022479-3		4
190	MS24693C51		.. SCREW- USED ON: 2022479-4 2022479-5		4
195	2047479-1		-----*----- ... BELL-END SUPPLIER CODE: V70210		1
195	2047479-1		... BELL-END SUPPLIER CODE: V70210		1
200	2047442-1		... INSERT-BRG SUPPLIER CODE: V70210		1
200	2047442-1		... INSERT-BRG SUPPLIER CODE: V70210		1

ILLUSTRATION ITEMS NOT ON PARTS LIST ARE NOT APPLICABLE

— ITEM NOT ILLUSTRATED

HXL

**21-31-05-02**

BOEING PROPRIETARY - Copyright © - Unpublished Work - See title page for details.

21-31-05  
FIG. 02  
PAGE 11  
DEC 22/08



767

PARTS CATALOG (MAINTENANCE)

FIG ITEM	PART NUMBER	1 2 3 4 5 6 7	NOMENCLATURE	EFFECT FROM TO	UNITS PER ASSY
2					
205	CA1450-3-6-10P	...	SCREW ASSY- SUPPLIER CODE: V29372 OPTIONAL PART: CS1143P3-10F V58998		3
205	CS1143P3-10F	...	SCREW ASSY- SUPPLIER CODE: V58998 OPTIONAL PART: CA1450-3-6-10P V29372		3
205	CA1450-3-6-10P	...	SCREW ASSY- SUPPLIER CODE: V29372 OPTIONAL PART: CS1143P3-10F V58998		3
205	CS1143P3-10F	...	SCREW ASSY- SUPPLIER CODE: V58998 OPTIONAL PART: CA1450-3-6-10P V29372		3
210	2047482-2	..	ROTOR ASSY- SUPPLIER CODE: V70210 USED ON: 2022479-3		1
210	2047482-3	..	ROTOR ASSY- SUPPLIER CODE: V70210 USED ON: 2022479-4 2022479-5		1
215	PAS3KDDFS381A	..	BEARING- SUPPLIER CODE: V21335 OPTIONAL PART: SR61PPDK49-274 V83086 GAREF614 V50294 USED ON: 2022479-3		1
ILLUSTRATION ITEMS NOT ON PARTS LIST ARE NOT APPLICABLE					

- ITEM NOT ILLUSTRATED

21-31-05-02

21-31-05  
FIG. 02  
PAGE 12  
DEC 22/08

HXL



767

PARTS CATALOG (MAINTENANCE)

FIG ITEM	PART NUMBER	1 2 3 4 5 6 7	NOMENCLATURE	EFFECT FROM TO	UNITS PER ASSY
2 215	SR61PPDK49-274		.. BEARING- SUPPLIER CODE: V83086 OPTIONAL PART: PAS3KDDFS381A V21335 GAREF614 V50294 USED ON: 2022479-3		1
215	GAREF614		.. BEARING- SUPPLIER CODE: V50294 OPTIONAL PART: PAS3KDDFS381A V21335 SR61PPDK49-274 V83086 USED ON: 2022479-3		1
215	PAS3KDDFS381A		.. BEARING- SUPPLIER CODE: V21335 OPTIONAL PART: SR61PPDK49-274 V83086 GAREF614 V50294 USED ON: 2022479-4 2022479-5		1
215	SR61PPDK49-274		.. BEARING- SUPPLIER CODE: V83086 OPTIONAL PART: PAS3KDDFS381A V21335 GAREF614 V50294 USED ON: 2022479-4 2022479-5		1

ILLUSTRATION ITEMS NOT ON PARTS LIST ARE NOT APPLICABLE

- ITEM NOT ILLUSTRATED

HXL

21-31-05-02

BOEING PROPRIETARY - Copyright © - Unpublished Work - See title page for details.

21-31-05  
FIG. 02  
PAGE 13  
DEC 22/08



767

PARTS CATALOG (MAINTENANCE)

FIG ITEM	PART NUMBER	1 2 3 4 5 6 7	NOMENCLATURE	EFFECT FROM TO	UNITS PER ASSY
2 215	GAREF614		.. BEARING- SUPPLIER CODE: V50294 OPTIONAL PART: PAS3KDDFS381A V21335 SR61PPDK49-274 V83086 USED ON: 2022479-4 2022479-5		1
220	2047470-2		.. HOUSING ASSY-MOTOR STATOR SUPPLIER CODE: V70210 USED ON: 2022479-3		1
220	2047470-2		.. HOUSING ASSY-MOTOR STATOR SUPPLIER CODE: V70210 USED ON: 2022479-4 2022479-5		1
225	2047481-2		... STATOR ASSY- SUPPLIER CODE: V70210 USED ON: 2047470-2		1
225	2047481-2		... STATOR ASSY- SUPPLIER CODE: V70210 USED ON: 2047470-2		1
230	2047480-1		... HOUSING-STATOR SUPPLIER CODE: V70210		1
230	2047480-1		... HOUSING-STATOR SUPPLIER CODE: V70210		1

ILLUSTRATION ITEMS NOT ON PARTS LIST ARE NOT APPLICABLE

- ITEM NOT ILLUSTRATED

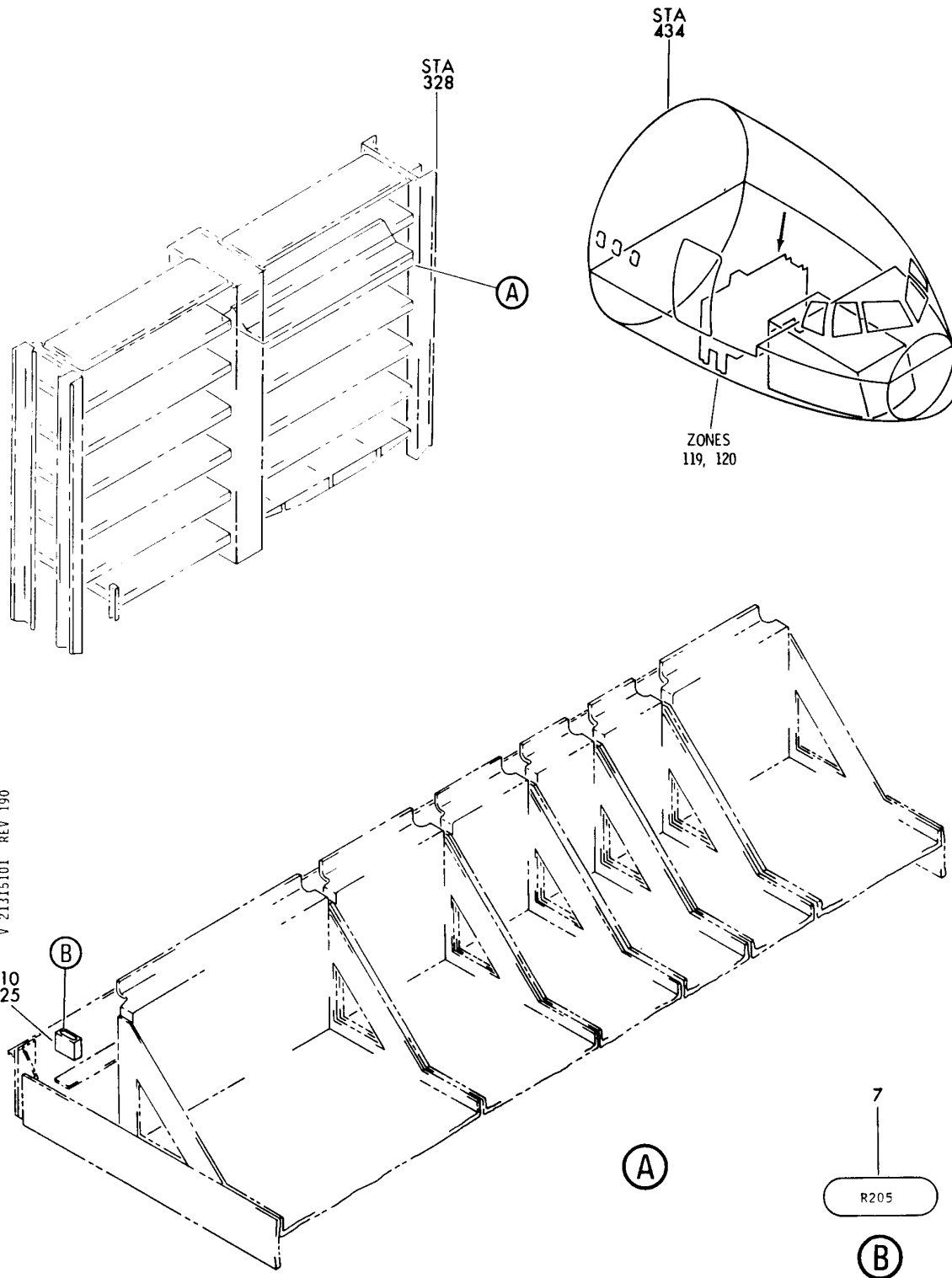
HXL

21-31-05-02

BOEING PROPRIETARY - Copyright © - Unpublished Work - See title page for details.

21-31-05  
FIG. 02  
PAGE 14  
DEC 22/08

**BOEING**  
767  
PARTS CATALOG (MAINTENANCE)



SHELF ASSY-ELECTRONIC EQPT CTR E1-2 (AIR CONDITIONING ONLY)  
FIGURE 1

**21-31-51-01**

HXL  
DEC 22/06

21-31-51-01  
PAGE 0



767

PARTS CATALOG (MAINTENANCE)

FIG ITEM	PART NUMBER	1 2 3 4 5 6 7	NOMENCLATURE	EFFECT FROM TO	UNITS PER ASSY
1			SHELF ASSY-ELECTRONIC EQPT CTR E1-2 (AIR CONDITIONING ONLY)		
- 3	284T0112-78		SHELF ASSY-ELECTRONIC EQPT CTR E1-2 (AIR CONDITIONING ONLY) FOR NHA/OTHER SYS DET SEE: 53-11-64-01B		RF
7	BAC27TEX3043		.DECALSET-INCLUDES DECALS IDENTIFIED ON THE ILLUSTRATION		1
10	YHLZD30		.DIODE- SUPPLIER CODE: V09922 ELECTRICAL EQUIP NUMBER: R00205		1

ILLUSTRATION ITEMS NOT ON PARTS LIST ARE NOT APPLICABLE

- ITEM NOT ILLUSTRATED

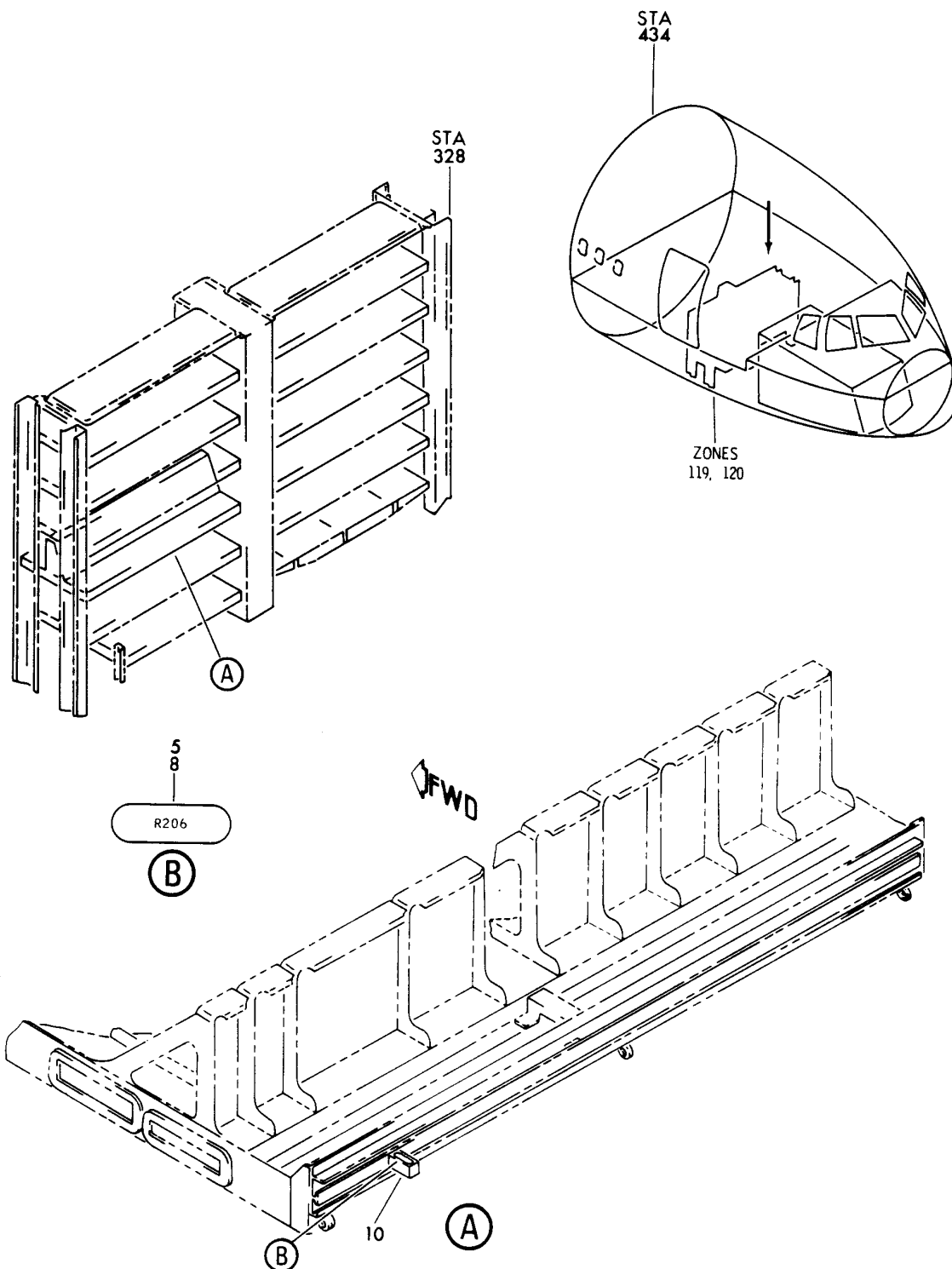
HXL

21-31-51-01

BOEING PROPRIETARY - Copyright © - Unpublished Work - See title page for details.

21-31-51  
FIG. 01  
PAGE 1  
DEC 22/07

**BOEING**  
767  
PARTS CATALOG (MAINTENANCE)



V 21315201 SHT 1 REV 067

SHELF ASSY-ELECTRONIC EQPT CTR E2-4 (AIR CONDITIONING ONLY)

FIGURE 1

**21-31-52-01**

HXL  
DEC 22/06

21-31-52-01  
PAGE 0





767

PARTS CATALOG (MAINTENANCE)

FIG ITEM	PART NUMBER	1 2 3 4 5 6 7	NOMENCLATURE	EFFECT FROM TO	UNITS PER ASSY
1			SHELF ASSY-ELECTRONIC EQPT CTR E2-4 (AIR CONDITIONING ONLY)		
- 2	284T0124-68		SHELF ASSY-ELECTRONIC EQPT CTR E2-4 (AIR CONDITIONING ONLY) FOR NHA/OTHER SYS DET SEE: 53-11-64-01B	155162	RF
- 3	284T0124-84		SHELF ASSY-ELECTRONIC EQPT CTR E2-4 (AIR CONDITIONING ONLY) FOR NHA/OTHER SYS DET SEE: 53-11-64-01B	163999	RF
8	BAC27TEX3285		.DECALSET-INCLUDES DECALS IDENTIFIED ON THE ILLUSTRATION		1
10	YHLZD30		.DIODE- SUPPLIER CODE: V09922 ELECTRICAL EQUIP NUMBER: R00206		1

ILLUSTRATION ITEMS NOT ON PARTS LIST ARE NOT APPLICABLE

- ITEM NOT ILLUSTRATED

HXL

21-31-52-01

BOEING PROPRIETARY - Copyright © - Unpublished Work - See title page for details.

21-31-52  
FIG. 01  
PAGE 1  
DEC 22/07