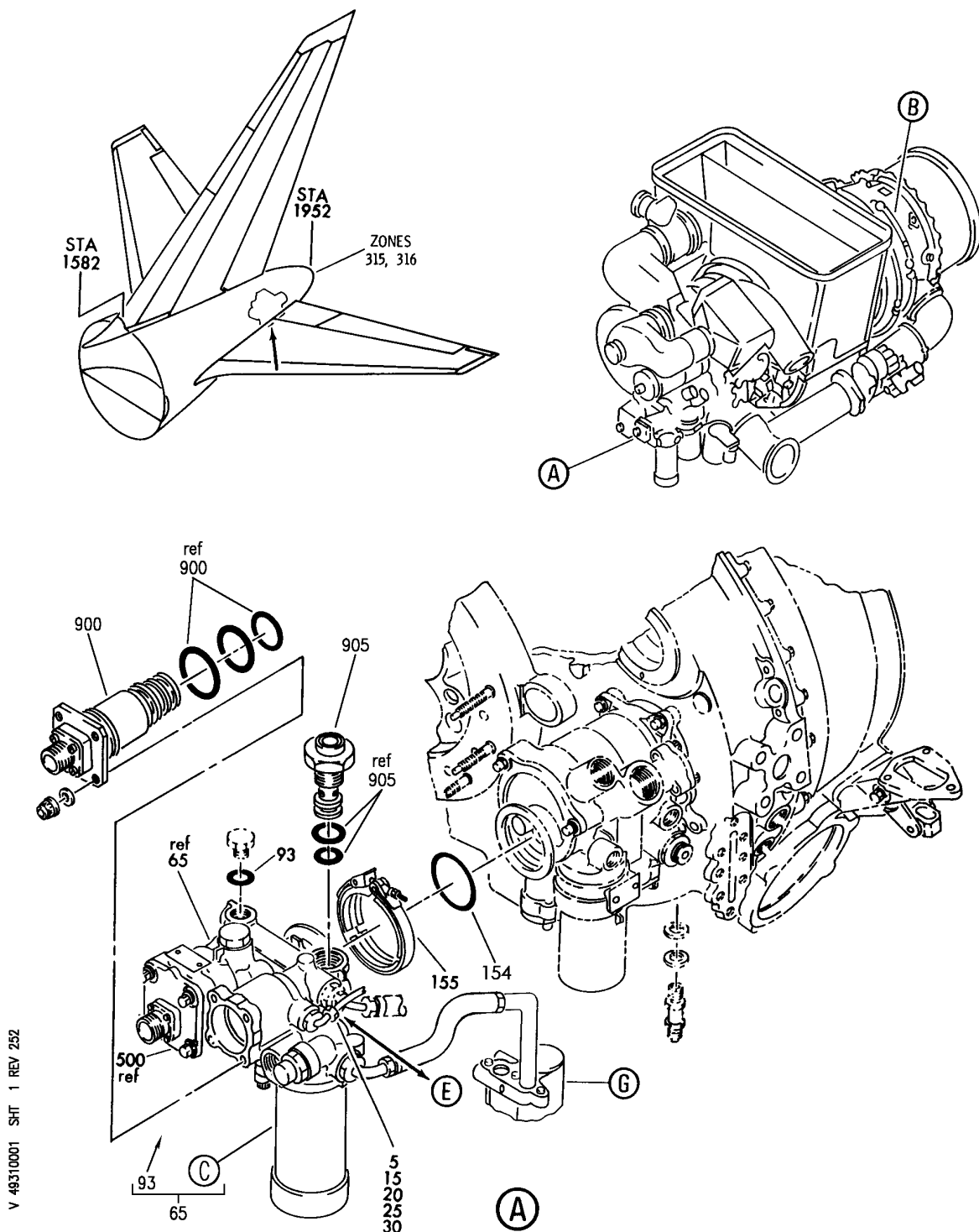


APU ENGINE FUEL SYSTEM

HXL
DEC 22/06

49-31-00
SECTION TITLE
PAGE 1

BOEING
767
PARTS CATALOG (MAINTENANCE)



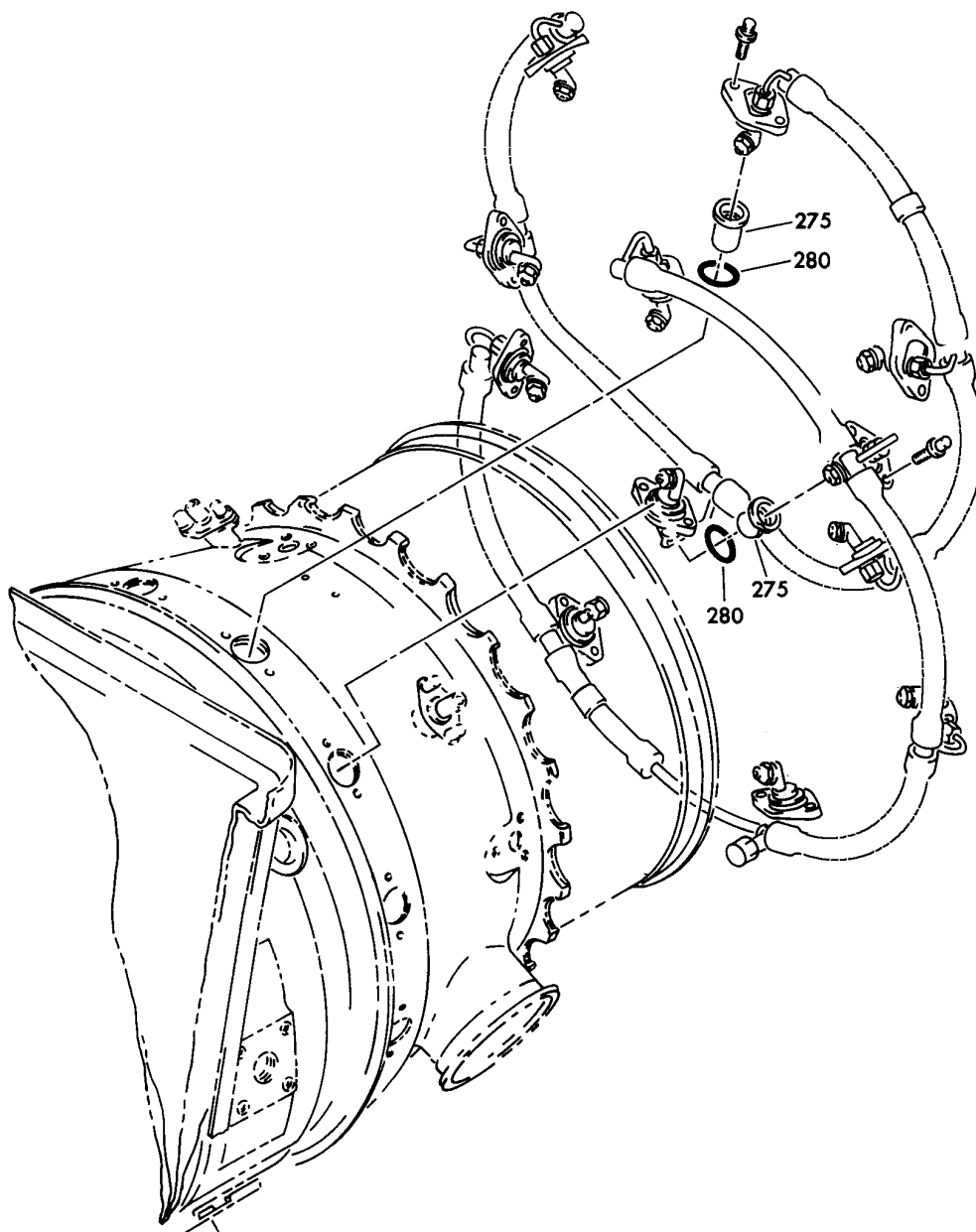
ENGINE-GAS TURB (APU ENGINE FUEL SYSTEM ONLY)
FIGURE 1 (SHEET 1)

49-31-00-01

HXL
DEC 22/06

49-31-00-01
PAGE 0

BOEING
767
PARTS CATALOG (MAINTENANCE)



(B)

V 49310001 SHT 2 REV 252

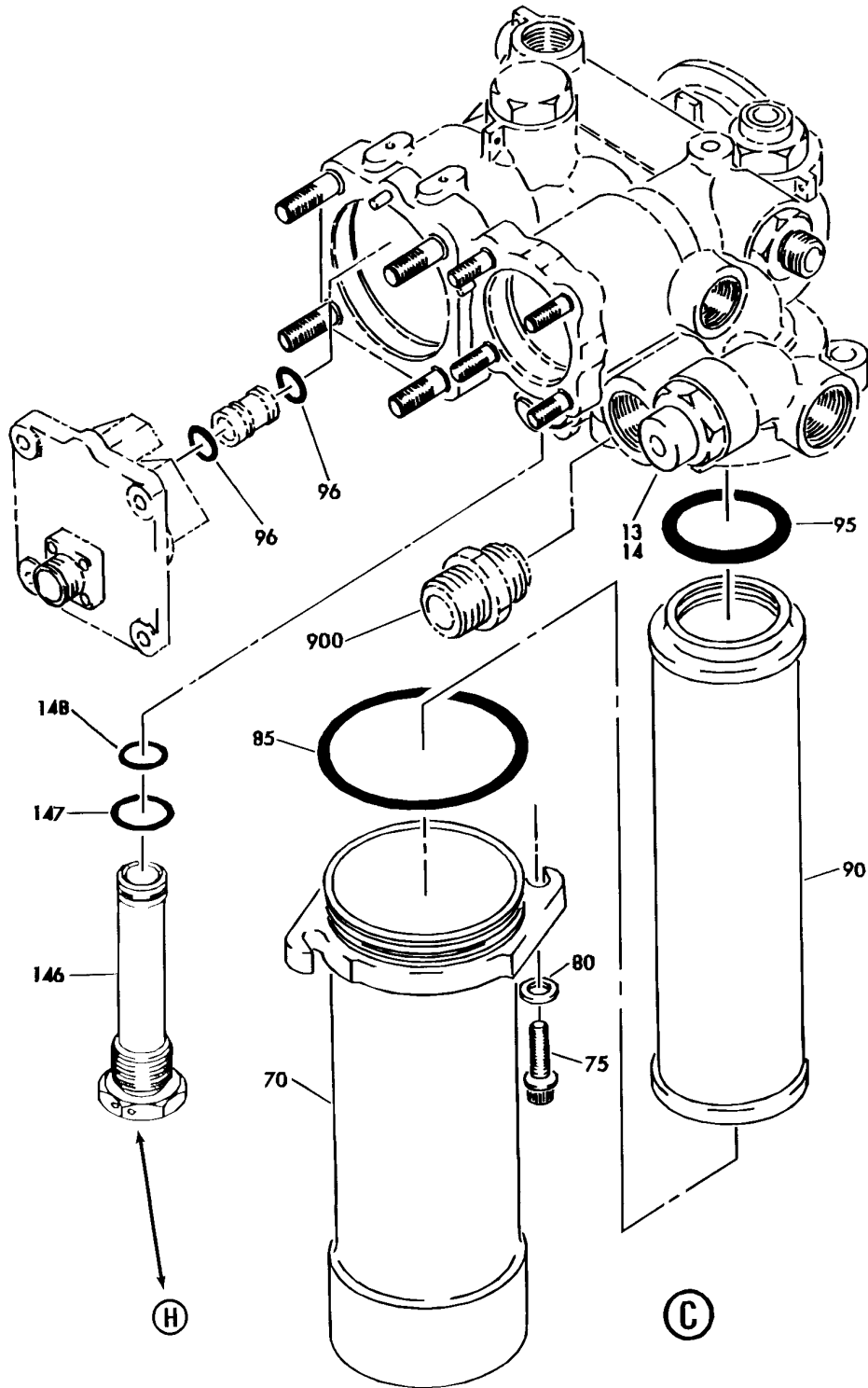
ENGINE-GAS TURB (APU ENGINE FUEL SYSTEM ONLY)
FIGURE 1 (SHEET 2)

49-31-00-01

HXL
DEC 22/06

49-31-00-01
PAGE 0A

BOEING
767
PARTS CATALOG (MAINTENANCE)



V 49310001 SHT 3 REV 196

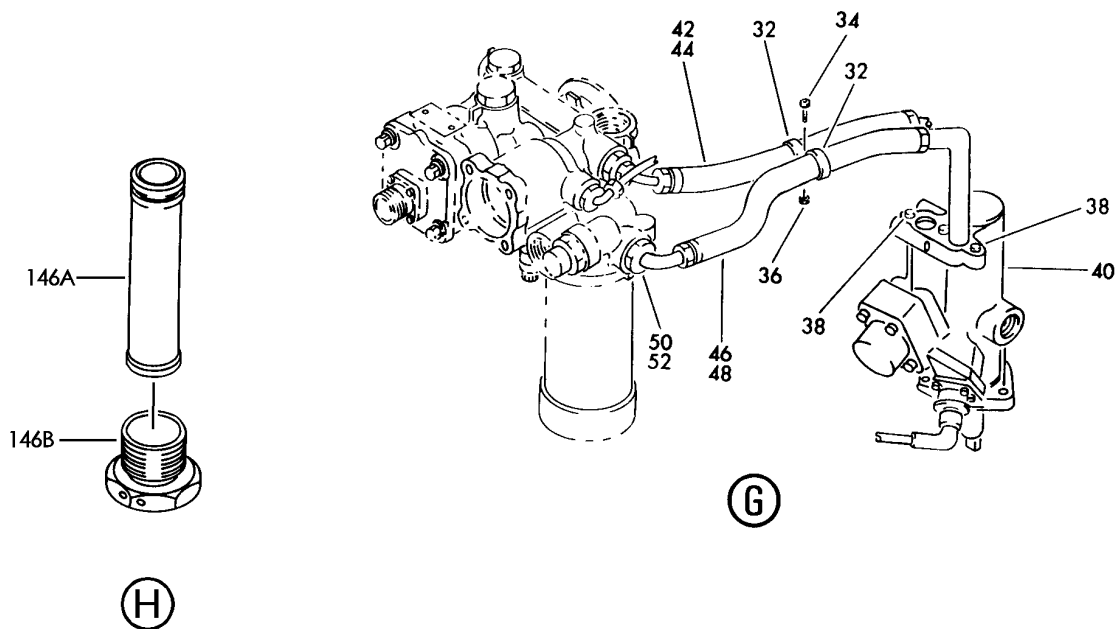
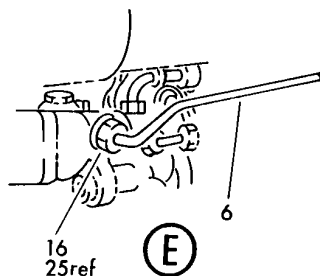
ENGINE-GAS TURB (APU ENGINE FUEL SYSTEM ONLY)
FIGURE 1 (SHEET 3)

49-31-00-01

HXL
DEC 22/06

49-31-00-01
PAGE 0B

BOEING
767
PARTS CATALOG (MAINTENANCE)



(H)

V 49310001 SHT 4 REV 252

ENGINE-GAS TURB (APU ENGINE FUEL SYSTEM ONLY)
FIGURE 1 (SHEET 4)

49-31-00-01

HXL
DEC 22/06

49-31-00-01
PAGE 0C



767
PARTS CATALOG (MAINTENANCE)

FIG ITEM	PART NUMBER	1 2 3 4 5 6 7 NOMENCLATURE	EFFECT FROM TO	UNITS PER ASSY
1		ENGINE-GAS TURB (APU ENGINE FUEL SYSTEM ONLY)		

ILLUSTRATION ITEMS NOT ON PARTS LIST ARE NOT APPLICABLE

- ITEM NOT ILLUSTRATED

HXL

49-31-00-01

BOEING PROPRIETARY - Copyright © - Unpublished Work - See title page for details.

49-31-00
FIG. 01
PAGE 1
DEC 22/06



767

PARTS CATALOG (MAINTENANCE)

FIG ITEM	PART NUMBER	1 2 3 4 5 6 7 NOMENCLATURE	EFFECT FROM TO	UNITS PER ASSY
1 - 1	3800298-1-6	ENGINE ASSY-GAS TURB (APU ENGINE FUEL SYSTEM ONLY) SUPPLIER CODE: V99193 SPECIFICATION NUMBER: S351T020-205 CONFIG CHG DATA FROM A CMM: REPLACES 3800298-1-5 COMPONENT MAINT MANUAL REF: 49-22-11 QUALIFIED I/W DATA: S351T020-203 (3800298-1-4) AND S351T020-205 (3800298-1-6) ARE INTERCHANGEABLE WITH THE INCORPORATION OF S/B 767-49-0025 S351T020-204 (3800298-1-5) AND S351T020-205 (3800298-1-6) ARE INTERCHANGEABLE WITH THE INCORPORATION OF S/B 767-49-0025 S351T020-202 (3800298-1-3) AND S351T020-205 (3800298-1-6) ARE INTERCHANGEABLE WITH THE INCORPORATION OF S/B 767-49-0025 S351T020-201 (3800298-1-2) AND S351T020-205 (3800298-1-6) ARE INTERCHANGEABLE WITH THE INCORPORATION OF S/B 767-49-0025 S351T020-200 (3800298-1-1) AND S351T020-205 (3800298-1-6) ARE INTERCHANGEABLE WITH THE INCORPORATION OF S/B 767-49-0025 FOR NHA/OTHER SYS DET SEE: 49-11-00-01 ILLUSTRATION ITEMS NOT ON PARTS LIST ARE NOT APPLICABLE		RF

- ITEM NOT ILLUSTRATED

49-31-00-01

49-31-00
 FIG. 01
 PAGE 2
 DEC 22/06

HXL



767

PARTS CATALOG (MAINTENANCE)

FIG ITEM	PART NUMBER	1 2 3 4 5 6 7 NOMENCLATURE	EFFECT FROM TO	UNITS PER ASSY
1 - 1	3800298-1-5	ENGINE ASSY-GAS TURB (APU ENGINE FUEL SYSTEM ONLY) SUPPLIER CODE: V99193 SPECIFICATION NUMBER: S351T020-204 CONFIG CHG DATA FROM A CMM: REPLS BY 3800298-1-6 COMPONENT MAINT MANUAL REF: 49-22-11 QUALIFIED I/W DATA: S351T020-204 (3800298-1-5) AND S351T020-205 (3800298-1-6) ARE INTERCHANGEABLE WITH THE INCORPORATION OF S/B 767-49-0025 S351T020-203 (3800298-1-4) AND S351T020-206 (3800298-1-7/3800298-1) ARE INTERCHANGEABLE WITH THE INCORPORATION OF ALLIED SIGNAL S/B GTCP331-49-7081. FOR NHA/OTHER SYS DET SEE: 49-11-00-01		RF

ILLUSTRATION ITEMS NOT ON PARTS LIST ARE NOT APPLICABLE

- ITEM NOT ILLUSTRATED

HXL

49-31-00-01

BOEING PROPRIETARY - Copyright © - Unpublished Work - See title page for details.

49-31-00
 FIG. 01
 PAGE 3
 DEC 22/06



767

PARTS CATALOG (MAINTENANCE)

FIG ITEM	PART NUMBER	1 2 3 4 5 6 7 NOMENCLATURE	EFFECT FROM TO	UNITS PER ASSY
1 - 1	3800298-1-1	ENGINE ASSY-GAS TURB (APU ENGINE FUEL SYSTEM ONLY) SUPPLIER CODE: V99193 SPECIFICATION NUMBER: S351T020-200 COMPONENT MAINT MANUAL REF: 49-22-11 QUALIFIED I/W DATA: S351T020-200 (3800298-1-1) AND S351T020-205 (3800298-1-6) ARE INTERCHANGEABLE WITH THE INCORPORATION OF S/B 767-49-0025 S351T020-200 (3800298-1-1) AND S351T020-206 (3800298-1-7/3800298-1) ARE INTERCHANGEABLE WITH THE INCORPORATION OF ALLIED SIGNAL S/B GTCP331-49-7081 FOR NHA/OTHER SYS DET SEE: 49-11-00-01		RF

ILLUSTRATION ITEMS NOT ON PARTS LIST ARE NOT APPLICABLE

- ITEM NOT ILLUSTRATED

HXL

49-31-00-01

BOEING PROPRIETARY - Copyright © - Unpublished Work - See title page for details.

49-31-00
 FIG. 01
 PAGE 4
 DEC 22/06



767

PARTS CATALOG (MAINTENANCE)

FIG ITEM	PART NUMBER	1 2 3 4 5 6 7 NOMENCLATURE	EFFECT FROM TO	UNITS PER ASSY
1 - 1	3800298-1-2	ENGINE ASSY-GAS TURB MODEL GTCP331-200ER (APU ENGINE FUEL SYSTEM ONLY) SUPPLIER CODE: V99193 SPECIFICATION NUMBER: S351T020-201 CONFIG CHG DATA FROM A CMM: REPLS 3800298-1-1 COMPONENT MAINT MANUAL REF: 49-22-11 QUALIFIED I/W DATA: S351T020-201 (3800298-1-2) AND S351T020-205 (3800298-1-6) ARE INTERCHANGEABLE WITH THE INCORPORATION OF S/B 767-49-0025 S351T020-201 (3800298-1-2) AND S351T020-206 (3800298-1-7/3800298-1) ARE INTERCHANGEABLE WITH THE INCORPORATION OF ALLIED SIGNAL S/B GTCP331-49-7082 FOR NHA/OTHER SYS DET SEE: 49-11-00-01		RF

ILLUSTRATION ITEMS NOT ON PARTS LIST ARE NOT APPLICABLE

- ITEM NOT ILLUSTRATED

HXL

49-31-00-01

BOEING PROPRIETARY - Copyright © - Unpublished Work - See title page for details.

49-31-00
 FIG. 01
 PAGE 5
 DEC 22/06



767

PARTS CATALOG (MAINTENANCE)

FIG ITEM	PART NUMBER	1 2 3 4 5 6 7 NOMENCLATURE	EFFECT FROM TO	UNITS PER ASSY
1 - 1	3800298-1-3	ENGINE ASSY-GAS TURB MODEL GTCP331-200ER (APU ENGINE FUEL SYSTEM ONLY) SUPPLIER CODE: V99193 SPECIFICATION NUMBER: S351T020-202 CONFIG CHG DATA FROM A CMM: REPLS 3800298-1-2 COMPONENT MAINT MANUAL REF: 49-22-11 QUALIFIED I/W DATA: S351T020-202 (3800298-1-3) AND S351T020-205 (3800298-1-6) ARE INTERCHANGEABLE WITH THE INCORPORATION OF S/B 767-49-0025 S351T020-202 (3800298-1-3) AND S351T020-206 (3800298-1-7/3800298-1) ARE INTERCHANGEABLE WITH THE INCORPORATION OF ALLIED SIGNAL S/B GTCP331-49-7081 FOR NHA/OTHER SYS DET SEE: 49-11-00-01		RF

ILLUSTRATION ITEMS NOT ON PARTS LIST ARE NOT APPLICABLE

- ITEM NOT ILLUSTRATED

HXL

49-31-00-01

BOEING PROPRIETARY - Copyright © - Unpublished Work - See title page for details.

49-31-00
 FIG. 01
 PAGE 6
 DEC 22/06



767

PARTS CATALOG (MAINTENANCE)

FIG ITEM	PART NUMBER	1 2 3 4 5 6 7	NOMENCLATURE	EFFECT FROM TO	UNITS PER ASSY
1					
- 1	3800298-1-4		ENGINE ASSY-GAS TURB MODEL GTCP331-200ER (APU ENGINE FUEL SYSTEM ONLY) SUPPLIER CODE: V99193 SPECIFICATION NUMBER: S351T020-203 CONFIG CHG DATA FROM A CMM: REPLS 3800298-1-3 COMPONENT MAINT MANUAL REF: 49-22-11 QUALIFIED I/W DATA: S351T020-203 (3800298-1-4) AND S351T020-206 (3800298-1-7/3800298-1) ARE INTERCHANGEABLE WITH THE INCORPORATION OF ALLIED SIGNAL S/B GTCP331-49-7081 3800298-1-4/S351T020-203 AND 3800298-1-6/S351T020-205 ARE INTERCHANGEABLE WITH THE INCORPORATION OF ALLIED SIGNAL S/B GTCP331-49-7081 FOR NHA/OTHER SYS DET SEE: 49-11-00-01		RF
- 2	3800298-1-7		ENGINE ASSY-GAS TURB MODEL GTCP331-200ER (APU ENGINE FUEL SYSTEM ONLY) SUPPLIER CODE: V99193 SPECIFICATION NUMBER: S351T020-206 CONFIG CHG DATA FROM A CMM: REPLS 3800298-1-6 ELECTRICAL EQUIP NUMBER: M00967 COMPONENT MAINT MANUAL REF: 49-22-11 QUALIFIED I/W DATA: S351T020-203 (3800298-1-4) AND S351T020-206 (3800298-1-7/3800298-1) ARE INTERCHANGEABLE WITH THE INCORPORATION OF		RF
ILLUSTRATION ITEMS NOT ON PARTS LIST ARE NOT APPLICABLE					

- ITEM NOT ILLUSTRATED

49-31-00-01

49-31-00
FIG. 01
PAGE 7
DEC 22/06

HXL



767

PARTS CATALOG (MAINTENANCE)

FIG ITEM	PART NUMBER	1 2 3 4 5 6 7 NOMENCLATURE	EFFECT FROM TO	UNITS PER ASSY
1 2		<p>ALLIED SIGNAL S/B GTCP331-49-7081. S351T020-204 (3800298-1-5) AND S351T020-206 (3800298-1-7/3800298-1) ARE INTERCHANGEABLE WITH THE INCORPORATION OF ALLIED SIGNAL S/B GTCP331-49-7081. S351T020-202 (3800298-1-3) AND S351T020-206 (3800298-1-7/3800298-1) ARE INTERCHANGEABLE WITH THE INCORPORATION OF ALLIED SIGNAL S/B GTCP331-49-7081 S351T020-201 (3800298-1-2) AND S351T020-206 (3800298-1-7/3800298-1) ARE INTERCHANGEABLE WITH THE INCORPORATION OF ALLIED SIGNAL S/B GTCP331-49-7081 S351T020-200 (3800298-1-1) AND S351T020-206 (3800298-1-7/3800298-1) ARE INTERCHANGEABLE WITH THE INCORPORATION OF ALLIED SIGNAL S/B GTCP331-49-7081 OPTIONAL PART: 3800298-1 V99193 REWORKED BY SB: GTCP331-49-5784R2 V99193 GTCP331-49-7479 V99193 FOR NHA/OTHER SYS DET SEE: 49-11-00-01</p>		
- 2	3800298-1	<p>ENGINE ASSY-GAS TURB (APU ENGINE FUEL SYSTEM ONLY) SUPPLIER CODE: V99193 SPECIFICATION NUMBER:</p>		RF

ILLUSTRATION ITEMS NOT ON PARTS LIST ARE NOT APPLICABLE

- ITEM NOT ILLUSTRATED

49-31-00-01

HXL

BOEING PROPRIETARY - Copyright © - Unpublished Work - See title page for details.

49-31-00
FIG. 01
PAGE 8
DEC 22/06



767

PARTS CATALOG (MAINTENANCE)

FIG ITEM	PART NUMBER	1 2 3 4 5 6 7 NOMENCLATURE	EFFECT FROM TO	UNITS PER ASSY
1 2		<p>S351T020-206 COMPONENT MAINT MANUAL REF: 49-22-11 QUALIFIED I/W DATA: S351T020-204 (3800298-1-5) AND S351T020-206 (3800298-1-7/3800298-1) ARE INTERCHANGEABLE WITH THE INCORPORATION OF ALLIED SIGNAL S/B GTCP331-49-7081 S351T020-203 (3800298-1-4) AND S351T020-206 (3800298-1-7/3800298-1) ARE INTERCHANGEABLE WITH THE INCORPORATION OF ALLIED SIGNAL S/ GTCP331-49-7081 S351T020-202 (3800298-1-3) AND S351T020-206 (3800298-1-7/3800298-1) ARE INTERCHANGEABLE WITH THE INCORPORATION OF ALLIED SIGNAL S/B GTCP331-49-7081 S351T020-201 (3800298-1-2) AND S351T020-206 (3800298-1-7/3800298-1) ARE INTERCHANGEABLE WITH THE INCORPORATION OF ALLIED SIGNAL S/B GTCP331-49-7081 S351T020-200 (3800298-1-1) AND S351T020-206 (3800298-1-7/3800298-1) ARE INTERCHANGEABLE WITH THE INCORPORATION OF ALLIED SIGNAL S/B GTCP331-49-7081 OPTIONAL PART: 3800298-1-7 V99193 REWORKED BY SB: GTCP331-49-5784R2</p>		

ILLUSTRATION ITEMS NOT ON PARTS LIST ARE NOT APPLICABLE

- ITEM NOT ILLUSTRATED

49-31-00-01

49-31-00
 FIG. 01
 PAGE 9
 DEC 22/06

HXL



767

PARTS CATALOG (MAINTENANCE)

FIG ITEM	PART NUMBER	1 2 3 4 5 6 7	NOMENCLATURE	EFFECT FROM TO	UNITS PER ASSY
1					
2			V99193		
			GTCP-49-7479		
			V99193		
			FOR NHA/OTHER SYS DET SEE:		
			49-11-00-01		
6	3882720-1		.TUBE-FLOW DIVIDER		1
			SUPPLIER CODE:		
			V99193		
			SB DATA FROM A CMM:		
			POST SB 49-5498		
			CONFIG CHG DATA FROM A CMM:		
			REPLS 3882526-1		
			USED ON:		
			381326-2		
			381326-2-1		
			381326-2-2		
			381326-2-3		
			381326-2-4		
			381364-1		
			381364-1-1		
			381364-1-2		
			381364-1-3		
			3800298-1		
			3800298-1-1		
			3800298-1-2		
			3800298-1-3		
			3800298-1-4		
			3800298-1-5		
			3800298-1-6		
			3800298-1-7		
ILLUSTRATION ITEMS NOT ON PARTS LIST ARE NOT APPLICABLE					

- ITEM NOT ILLUSTRATED

HXL

49-31-00-01

BOEING PROPRIETARY - Copyright © - Unpublished Work - See title page for details.

49-31-00
FIG. 01
PAGE 10
DEC 22/06



767

PARTS CATALOG (MAINTENANCE)

FIG ITEM	PART NUMBER	1 2 3 4 5 6 7	NOMENCLATURE	EFFECT FROM TO	UNITS PER ASSY
1	16 MS21902J4		.UNION- SB DATA FROM A CMM: POST SB 49-5498 USED ON: 381326-2 381326-2-1 381326-2-2 381326-2-3 381326-2-4 381364-1 381364-1-1 381364-1-2 381364-1-3 3800298-1 3800298-1-1 3800298-1-2 3800298-1-3 3800298-1-4 3800298-1-5 3800298-1-6 3800298-1-7		1
	25 M25988-2-904		.PACKING- OPTIONAL PART: S9412-554 V99193 USED ON: 381326-2 381326-2-1 381326-2-2 381326-2-3 381326-2-4 381364-1 381364-1-1 381364-1-2 381364-1-3 3800298-1 3800298-1-1 3800298-1-2 3800298-1-3 3800298-1-4 3800298-1-5 3800298-1-6 3800298-1-7		1

ILLUSTRATION ITEMS NOT ON PARTS LIST ARE NOT APPLICABLE

- ITEM NOT ILLUSTRATED

HXL

49-31-00-01

BOEING PROPRIETARY - Copyright © - Unpublished Work - See title page for details.

49-31-00
FIG. 01
PAGE 11
DEC 22/06



767

PARTS CATALOG (MAINTENANCE)

FIG ITEM	PART NUMBER	1 2 3 4 5 6 7	NOMENCLATURE	EFFECT FROM TO	UNITS PER ASSY
1 25	S9412-554		.PACKING- SUPPLIER CODE: V99193 OPTIONAL PART: M25988-2-904 USED ON: 381326-2 381326-2-1 381326-2-2 381326-2-3 381326-2-4 381364-1 381364-1-1 381364-1-2 381364-1-3 3800298-1 3800298-1-1 3800298-1-2 3800298-1-3 3800298-1-4 3800298-1-5 3800298-1-6 3800298-1-7		1
32	TA12C59WTH11HB		.CLAMP- SUPPLIER CODE: V84971 OPTIONAL PART: JM44LC43H11WC V22175 211-577-9011 V99193		2
32	JM44LC43H11WC		.CLAMP- SUPPLIER CODE: V22175 SB DATA FROM A CMM: POST SPB GTE1046 OPTIONAL PART: TA12C59WTH11HB V84971 211-501-9661 V99193		2
32	211-577-9011		.CLAMP- SUPPLIER CODE: V99193 OPTIONAL PART: TA12C59WTH11HB V84971		2

ILLUSTRATION ITEMS NOT ON PARTS LIST ARE NOT APPLICABLE

- ITEM NOT ILLUSTRATED

HXL

49-31-00-01

BOEING PROPRIETARY - Copyright © - Unpublished Work - See title page for details.

49-31-00
FIG. 01
PAGE 12
DEC 22/06

BOEING
767
PARTS CATALOG (MAINTENANCE)

FIG ITEM	PART NUMBER	1 2 3 4 5 6 7	NOMENCLATURE	EFFECT FROM TO	UNITS PER ASSY
1					
32	211-501-9661		.CLAMP- SUPPLIER CODE: V99193 OPTIONAL PART: JM44LC43H11WC V22175 ATTACHING PARTS		2
34	MS21279-05		.BOLT- OPTIONAL PART: MS9556-05		1
34	MS9556-05		.BOLT- SB DATA FROM A CMM: POST SPB GTE0292 OPTIONAL PART: MS21279-05		1
36	MS21043-3		.NUT -----*-----		1
38	MS21279-05		.BOLT- OPTIONAL PART: MS9556-05		3
38	MS9556-05		.BOLT- SB DATA FROM A CMM: POST SPB GTE0292 OPTIONAL PART: MS21279-05		3
40	3882437-1		.RETAINER-INLET GUIDE VANE ACTR SUPPLIER CODE: V99193		1
42	3882518-1		.HOSE-INLET GUIDE VANE ACTR PRESSURE SUPPLIER CODE: V99193		1
44	S9412-013		.PACKING- SUPPLIER CODE: V99193 OPTIONAL PART: M25988-2-013		2
44	S9412-012		.PACKING- SUPPLIER CODE: V99193 OPTIONAL PART: M25988-2-012		2
44	M25988-2-012		.PACKING- OPTIONAL PART: S9412-012 V99193		2
ILLUSTRATION ITEMS NOT ON PARTS LIST ARE NOT APPLICABLE					

R
R
R
R
R
R
R
R

- ITEM NOT ILLUSTRATED

49-31-00-01

49-31-00
FIG. 01
PAGE 13
AUG 22/09

HXL

BOEING PROPRIETARY - Copyright © - Unpublished Work - See title page for details.



767

PARTS CATALOG (MAINTENANCE)

FIG ITEM	PART NUMBER	1 2 3 4 5 6 7	NOMENCLATURE	EFFECT FROM TO	UNITS PER ASSY
1					
44	M25988-2-013		.PACKING- OPTIONAL PART: S9412-013 V99193		2
46	3882519-1		.HOSE-INLET GUIDE VANE ACTR RETURN SUPPLIER CODE: V99193		1
48	S9412-012		.PACKING- SUPPLIER CODE: V99193 OPTIONAL PART: M25988-2-012		2
48	S9412-013		.PACKING- SUPPLIER CODE: V99193 OPTIONAL PART: M25988-2-013		2
48	M25988-2-013		.PACKING- OPTIONAL PART: S9412-013 V99193		2
48	M25988-2-012		.PACKING- OPTIONAL PART: S9412-012 V99193		2
50	MS21902J6		.UNION-		1
52	S9412-556		.PACKING- SUPPLIER CODE: V99193 OPTIONAL PART: M25988-2-906		1
52	M25988-2-906		.PACKING- OPTIONAL PART: S9412-556 V99193		1

R
R
R
R
R
R
R
R

ILLUSTRATION ITEMS NOT ON PARTS LIST ARE NOT APPLICABLE

- ITEM NOT ILLUSTRATED

HXL

49-31-00-01

BOEING PROPRIETARY - Copyright © - Unpublished Work - See title page for details.

49-31-00
FIG. 01
PAGE 14
AUG 22/09



767

PARTS CATALOG (MAINTENANCE)

FIG ITEM	PART NUMBER	1 2 3 4 5 6 7	NOMENCLATURE	EFFECT FROM TO	UNITS PER ASSY
1 65	3882500-10		. FUEL CONTROL ASSY- SUPPLIER CODE: V99193 NOT APPROVED FOR ETOPS AFTER INCORP OF SB: GTCP331-49-5888 V99193 GTCP331-49-5895 V99193 SB DATA FROM A CMM: POST SB 49-5569 CONFIG CHG DATA FROM A CMM: REPLS 3882500-11 REPLD BY 3882500-12 COMPONENT MAINT MANUAL REF: 49-31-61		1
65	3882500-12		. FUEL CONTROL ASSY- SUPPLIER CODE: V99193 NOT APPROVED FOR ETOPS AFTER INCORP OF SB: 49-5888 V99193 49-5895 V99193 SB DATA FROM A CMM: POST SB 49-5688 PRE SB 49-5888 CONFIG CHG DATA FROM A CMM: REPLS 3882500-10 REPLD BY 3882500-14 MISCELLANEOUS DATA: REWORKED FROM 3800550-10 3800550-11 AND 3800550-13 PER SB49-5570 COMPONENT MAINT MANUAL REF: 49-31-61		1

ILLUSTRATION ITEMS NOT ON PARTS LIST ARE NOT APPLICABLE

- ITEM NOT ILLUSTRATED

HXL

49-31-00-01

BOEING PROPRIETARY - Copyright © - Unpublished Work - See title page for details.

49-31-00
FIG. 01
PAGE 15
DEC 22/06



767

PARTS CATALOG (MAINTENANCE)

FIG ITEM	PART NUMBER	1 2 3 4 5 6 7	NOMENCLATURE	EFFECT FROM TO	UNITS PER ASSY
1 65	3882500-9		. FUEL CONTROL ASSY- SUPPLIER CODE: V99193 NOT APPROVED FOR ETOPS AFTER INCORP OF SB: GTCP331-49-5888 V99193 GTCP331-49-5895 V99193 SB DATA FROM A CMM: PRE SB 49-5639 COMPONENT MAINT MANUAL REF: 49-31-61 USED ON: 3800298-1-1 3800298-1-2 3800298-1-3 3800298-1-4 3800298-1-5 3800298-1-6		1
65	3882500-11		. FUEL CONTROL ASSY- SUPPLIER CODE: V99193 NOT APPROVED FOR ETOPS. SB DATA FROM A CMM: POST SB 49-5639 PRE SB 49-5569 CONFIG CHG DATA FROM A CMM: REPLD BY 3882500-10, -13 REWORKED BY 3882500-8 REWORKED BY 3882500-9 MISCELLANEOUS DATA: (USE ON 767 ER A/C) REWORKED FROM 3882500-6 AND 3882500-7 PER SB49-5640 COMPONENT MAINT MANUAL REF: 49-31-61		1

ILLUSTRATION ITEMS NOT ON PARTS LIST ARE NOT APPLICABLE

- ITEM NOT ILLUSTRATED

HXL

49-31-00-01

BOEING PROPRIETARY - Copyright © - Unpublished Work - See title page for details.

49-31-00
FIG. 01
PAGE 16
DEC 22/06



767

PARTS CATALOG (MAINTENANCE)

FIG ITEM	PART NUMBER	1 2 3 4 5 6 7	NOMENCLATURE	EFFECT FROM TO	UNITS PER ASSY
1 65	3882500-13		. FUEL CONTROL ASSY- SUPPLIER CODE: V99193 NOT APPROVED FOR ETOPS. SB DATA FROM A CMM: POST SB 49-5688 PRE SB 49-5888 CONFIG CHG DATA FROM A CMM: REPLS 3882500-11 REWORKED FROM PN 3882500-11 REPLD BY 3882500-15 MISCELLANEOUS DATA: REWORKED FROM 3882500-11 COMPONENT MAINT MANUAL REF: 49-31-61		1
65	3882500-14		. FUEL CONTROL ASSY- SUPPLIER CODE: V99193 SB DATA FROM A CMM: POST SB 49-5888 POST SB 49-5895 PRE SB 49-6674 PRE SB 49-6778 PRE SB 49-7157 CONFIG CHG DATA FROM A CMM: REPLS 3882500-12 REPLD BY 3882500-16 REPLD BY 3882500-17 MISCELLANEOUS DATA: REWORKED FROM 3882500-12 3882500-13 AND 3882500-15 PER SB49-4895 COMPONENT MAINT MANUAL REF: 49-31-61		1
65	3882500-15		. FUEL CONTROL ASSY- SUPPLIER CODE: V99193 NOT APPROVED FOR ETOPS. SB DATA FROM A CMM: POST SB 49-5888 CONFIG CHG DATA FROM A CMM: REPLS 3882500-13 MISCELLANEOUS DATA: REWORKED FROM 3882500-13 COMPONENT MAINT MANUAL REF: 49-31-61		1

ILLUSTRATION ITEMS NOT ON PARTS LIST ARE NOT APPLICABLE

- ITEM NOT ILLUSTRATED

49-31-00-01

49-31-00
FIG. 01
PAGE 17
DEC 22/06

HXL



767

PARTS CATALOG (MAINTENANCE)

FIG ITEM	PART NUMBER	1 2 3 4 5 6 7	NOMENCLATURE	EFFECT FROM TO	UNITS PER ASSY
1 65	3882500-16		. FUEL CONTROL ASSY- SUPPLIER CODE: V99193 SB DATA FROM A CMM: POST SB 49-6778 GTCP331-49-6778 CONFIG CHG DATA FROM A CMM: REPLS 3882500-14 REPLD BY 3882500-17 MISCELLANEOUS DATA: REWORKED FROM 3882500-14 COMPONENT MAINT MANUAL REF: 49-31-61		1
65	3882500-17		. FUEL CONTROL ASSY- SUPPLIER CODE: V99193 SB DATA FROM A CMM: POST SB 49-7157 CONFIG CHG DATA FROM A CMM: REPLS 3882500-14 REPLS 3882500-16 COMPONENT MAINT MANUAL REF: 49-31-61		1
70	3600569-2		.. BODY-FILTER FLUID SUPPLIER CODE: V99193 SB DATA FROM A CMM: PRE SPB GTE0312 CONFIG CHG DATA FROM A CMM: REPLD BY 3600569-1 OPTIONAL PART: 3600569-1 V06848		1
70	3600569-1		.. BODY-FILTER FLUID SUPPLIER CODE: V06848 SB DATA FROM A CMM: POST SPB GTE0312 CONFIG CHG DATA FROM A CMM: REPLS 3600569-2 OPTIONAL PART: 3883100-1 V99193 OPTIONAL PART: 3600569-2 V99193		1
75	MS9556-10		ATTACHING PARTS .. BOLT		2

ILLUSTRATION ITEMS NOT ON PARTS LIST ARE NOT APPLICABLE

- ITEM NOT ILLUSTRATED

49-31-00-01

49-31-00
FIG. 01
PAGE 18
AUG 22/08

HXL



767

PARTS CATALOG (MAINTENANCE)

FIG ITEM	PART NUMBER	1 2 3 4 5 6 7	NOMENCLATURE	EFFECT FROM TO	UNITS PER ASSY
1					
80	NAS620-10L	..	WASHER -----*-----		2
85	M25988-2-036	..	PACKING- OPTIONAL PART: S9412-036 V99193		1
85	S9412-036	..	PACKING- SUPPLIER CODE: V99193 OPTIONAL PART: M25988-2-036		1
90	3882496-1	..	ELEMENT ASSY-SEDIMENT STRAINER INLET FILTER SUPPLIER CODE: V99193		1
90	AC9012F1240	..	ELEMENT-SEDIMENT STRAINER INLET FILTER SUPPLIER CODE: V99193		1
93	S9412-553	..	PACKING- SUPPLIER CODE: V99193 OPTIONAL PART: M25988-2-903		1
93	M25988-2-903	..	PACKING- OPTIONAL PART: S9412-553 V99193		1
95	S9412-218	..	PACKING- SUPPLIER CODE: V99193 OPTIONAL PART: M25988-2-218		1
95	M25988-2-218	..	PACKING- OPTIONAL PART: S9412-218 V99193		1
96	S9412-011	..	PACKING- SUPPLIER CODE: V99193 OPTIONAL PART: M25988-2-011		2
96	M25988-2-011	..	PACKING- OPTIONAL PART: S9412-011 V99193		2

ILLUSTRATION ITEMS NOT ON PARTS LIST ARE NOT APPLICABLE

- ITEM NOT ILLUSTRATED

49-31-00-01

49-31-00
FIG. 01
PAGE 19
DEC 22/06

HXL



767

PARTS CATALOG (MAINTENANCE)

FIG ITEM	PART NUMBER	1 2 3 4 5 6 7	NOMENCLATURE	EFFECT FROM TO	UNITS PER ASSY
1 146	977392-5		.. ELEMENT-SEDIMENT STRAINER HIGH PRESSURE FILTER SUPPLIER CODE: V99193 SB DATA FROM A CMM: PRE SB 49-7156		1
146A	3883496-2		.. STRAINER-ELEMENT SUPPLIER CODE: V99193 SB DATA FROM A CMM: POST SB 49-7156 USED ON: 3882500-17		1
146B	AN814-8DL		.. PLUG- SB DATA FROM A CMM: POST SB 49-7156 USED ON: 3882500-17		1
147	S9412-558		.. PACKING- SUPPLIER CODE: V99193 OPTIONAL PART: M25988-2-908		1
147	M25988-2-908		.. PACKING- OPTIONAL PART: S9412-558 V99193		1
148	S9412-014		.. PACKING- SUPPLIER CODE: V99193 OPTIONAL PART: M25988-2-014		1
148	M25988-2-014		.. PACKING- OPTIONAL PART: S9412-014 V99193		1
154	S9413-036		. PACKING- SUPPLIER CODE: V99193 OPTIONAL PART: M83248-1-036		1
154	M83248-1-036		. PACKING- OPTIONAL PART: S9413-036 V99193		1

ILLUSTRATION ITEMS NOT ON PARTS LIST ARE NOT APPLICABLE

- ITEM NOT ILLUSTRATED

49-31-00-01

49-31-00
FIG. 01
PAGE 20
DEC 22/06

HXL



767

PARTS CATALOG (MAINTENANCE)

FIG ITEM	PART NUMBER	1 2 3 4 5 6 7	NOMENCLATURE	EFFECT FROM TO	UNITS PER ASSY
1					
155	4268C316M		. COUPLING- SUPPLIER CODE: V00624 OPTIONAL PART: 3202AC316 V94581 3132EA316-2 V14242 234-511-9059 V99193		1
155	3202AC316		. COUPLING- SUPPLIER CODE: V94581 OPTIONAL PART: 4268C316M V00624 3132EA316-2 V14242 234-511-9059 V99193		1
155	3132EA316-2		. COUPLING- SUPPLIER CODE: V14242 OPTIONAL PART: 4268C316M V98625 3202AC316 V94581 234-511-9059 V99193		1
155	234-511-9059		. COUPLING- SUPPLIER CODE: V99193 OPTIONAL PART: 4268C316M V98625 3202AC316 V94581 3132EA316-2 V14242		1
275	3830054-9		. SHROUD-FUEL NOZZLE SUPPLIER CODE: V99193 SB DATA FROM A CMM: POST SB 49-5549		12

ILLUSTRATION ITEMS NOT ON PARTS LIST ARE NOT APPLICABLE

- ITEM NOT ILLUSTRATED

HXL

49-31-00-01

BOEING PROPRIETARY - Copyright © - Unpublished Work - See title page for details.

49-31-00
FIG. 01
PAGE 21
DEC 22/06

BOEING
767
PARTS CATALOG (MAINTENANCE)

FIG ITEM	PART NUMBER	1 2 3 4 5 6 7	NOMENCLATURE	EFFECT FROM TO	UNITS PER ASSY
1 280	3101768-1		.PACKING-PREFORMED SUPPLIER CODE: V99193 SB DATA FROM A CMM: PRE SPB GTE0777 CONFIG CHG DATA FROM A CMM: REPLD BY 3830351-1 USED ON: 3800298-1-2 3800298-1-3 3800298-1-4 381326-2 381326-2-1 381326-2-2 381326-2-3 381364-1-1 381364-1-2		12
- 281	3830351-1		.GASKET- SUPPLIER CODE: V99193 SB DATA FROM A CMM: POST SPB GTE0777 CONFIG CHG DATA FROM A CMM: REPLS 3101768-1 USED ON: 3800298-1-7 381326-2-4		12
500			ILLUSTRATION REFERENCE: ENGINE ASSY-GAS TURB (APU FUEL FILTER DIFFERENTIAL PRESSURE INDICATOR ONLY) 49-31-10-01		RF
900			ILLUSTRATION REFERENCE: AUXILIARY POWER UNIT INSTL- AUX PWR SYS 49-11-00-01		RF
900			ILLUSTRATION REFERENCE: ENGINE ASSY-GAS TURB (APU FUEL CONTROL SOLENOID VALVE ONLY) 49-31-02-01		RF
905			ILLUSTRATION REFERENCE: ENGINE ASSY-GAS TURB (APU FUEL FILTER BYPASS VALVE ONLY) 49-31-05-01		RF
ILLUSTRATION ITEMS NOT ON PARTS LIST ARE NOT APPLICABLE					

- ITEM NOT ILLUSTRATED

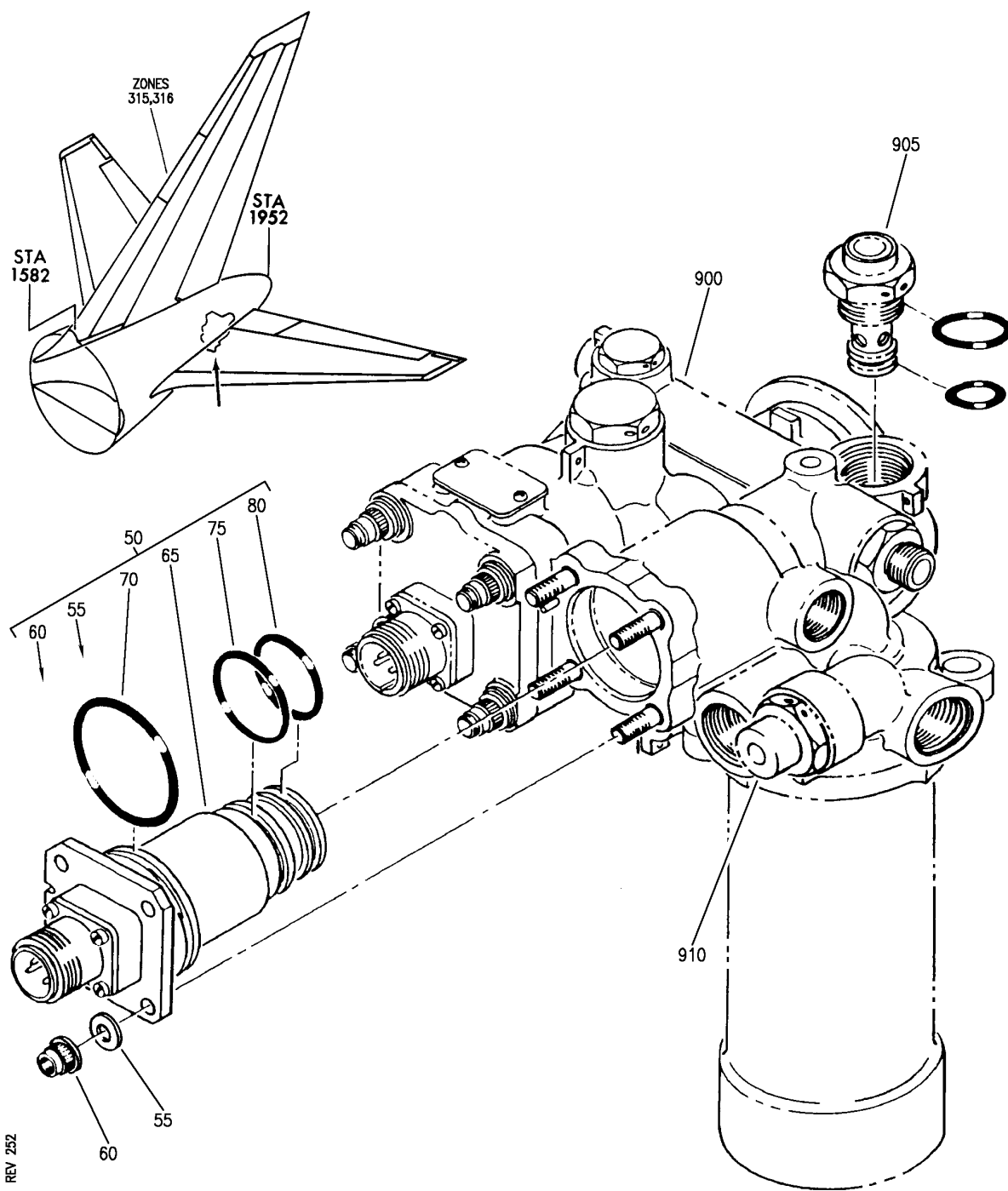
HXL

49-31-00-01

BOEING PROPRIETARY - Copyright © - Unpublished Work - See title page for details.

49-31-00
FIG. 01
PAGE 22
AUG 22/08

BOEING
767
PARTS CATALOG (MAINTENANCE)



V 48310201 REV 252

ENGINE ASSY-GAS TURB (APU FUEL CONTROL SOLENOID VALVE ONLY)
FIGURE 1

49-31-02-01

HXL
DEC 22/06

49-31-02-01
PAGE 0



767

PARTS CATALOG (MAINTENANCE)

FIG ITEM	PART NUMBER	1 2 3 4 5 6 7 NOMENCLATURE	EFFECT FROM TO	UNITS PER ASSY
1 - 10	3800298-1-1	ENGINE ASSY-GAS TURB (APU FUEL CONTROL SOLENOID VALVE ONLY) ENGINE ASSY-GAS TURB (APU FUEL CONTROL SOLENOID VALVE ONLY) MODEL GTCP331-200ER SUPPLIER CODE: V99193 SPECIFICATION NUMBER: S351T020-200 COMPONENT MAINT MANUAL REF: 49-22-11 QUALIFIED I/W DATA: S351T020-200 (3800298-1-1) AND S351T020-205 (3800298-1-6) ARE INTERCHANGEABLE WITH THE INCORPORATION OF S/B 767-49-0025 S351T020-200 (3800298-1-1) AND S351T020-206 (3800298-1-7/3800298-1) ARE INTERCHANGEABLE WITH THE INCORPORATION OF ALLIED SIGNAL S/B GTCP331-49-7081 FOR NHA/OTHER SYS DET SEE: 49-11-00-01		RF

ILLUSTRATION ITEMS NOT ON PARTS LIST ARE NOT APPLICABLE

- ITEM NOT ILLUSTRATED

HXL

49-31-02-01

BOEING PROPRIETARY - Copyright © - Unpublished Work - See title page for details.

49-31-02
 FIG. 01
 PAGE 1
 DEC 22/06



767

PARTS CATALOG (MAINTENANCE)

FIG ITEM	PART NUMBER	1 2 3 4 5 6 7 NOMENCLATURE	EFFECT FROM TO	UNITS PER ASSY
1 - 10	3800298-1-2	ENGINE ASSY-GAS TURB (APU FUEL CONTROL SOLENOID VALVE ONLY) MODEL GTCP331-200ER SUPPLIER CODE: V99193 SPECIFICATION NUMBER: S351T020-201 CONFIG CHG DATA FROM A CMM: REPLS 3800298-1-1 COMPONENT MAINT MANUAL REF: 49-22-11 QUALIFIED I/W DATA: S351T020-201 (3800298-1-2) AND S351T020-205 (3800298-1-6) ARE INTERCHANGEABLE WITH THE INCORPORATION OF S/B 767-49-0025 S351T020-201 (3800298-1-2) AND S351T020-206 (3800298-1-7/3800298-1) ARE INTERCHANGEABLE WITH THE INCORPORATION OF ALLIED SIGNAL S/B GTCP331-49-7081 FOR NHA/OTHER SYS DET SEE: 49-11-00-01		RF

ILLUSTRATION ITEMS NOT ON PARTS LIST ARE NOT APPLICABLE

- ITEM NOT ILLUSTRATED

HXL

49-31-02-01

BOEING PROPRIETARY - Copyright © - Unpublished Work - See title page for details.

49-31-02
 FIG. 01
 PAGE 2
 DEC 22/06



767

PARTS CATALOG (MAINTENANCE)

FIG ITEM	PART NUMBER	1 2 3 4 5 6 7 NOMENCLATURE	EFFECT FROM TO	UNITS PER ASSY
1 - 10	3800298-1-3	ENGINE ASSY-GAS TURB (APU FUEL CONTROL SOLENOID VALVE ONLY) MODEL GTCP331-200ER SUPPLIER CODE: V99193 SPECIFICATION NUMBER: S351T020-202 CONFIG CHG DATA FROM A CMM: REPLS 3800298-1-2 COMPONENT MAINT MANUAL REF: 49-22-11 QUALIFIED I/W DATA: S351T020-202 (3800298-1-3) AND S351T020-205 (3800298-1-6) ARE INTERCHANGEABLE WITH THE INCORPORATION OF S/B 767-49-0025 S351T020-202 (3800298-1-3) AND S351T020-206 (3800298-1-7/3800298-1) ARE INTERCHANGEABLE WITH THE INCORPORATION OF ALLIED SIGNAL S/B GTCP331-49-7081 FOR NHA/OTHER SYS DET SEE: 49-11-00-01		RF

ILLUSTRATION ITEMS NOT ON PARTS LIST ARE NOT APPLICABLE

- ITEM NOT ILLUSTRATED

HXL

49-31-02-01

BOEING PROPRIETARY - Copyright © - Unpublished Work - See title page for details.

49-31-02
 FIG. 01
 PAGE 3
 DEC 22/06



767

PARTS CATALOG (MAINTENANCE)

FIG ITEM	PART NUMBER	1 2 3 4 5 6 7 NOMENCLATURE	EFFECT FROM TO	UNITS PER ASSY
1 - 10	3800298-1-4	ENGINE ASSY-GAS TURB (APU FUEL CONTROL SOLENOID VALVE ONLY) MODEL GTCP331-200ER SUPPLIER CODE: V99193 SPECIFICATION NUMBER: S351T020-203 CONFIG CHG DATA FROM A CMM: REPLS 3800298-1-3 COMPONENT MAINT MANUAL REF: 49-22-11 QUALIFIED I/W DATA: S351T020-203 (3800298-1-4) AND S351T020-205 (3800298-1-6) ARE INTERCHANGEABLE WITH THE INCORPORATION OF S/B 767-49-0025 S351T020-203 (3800298-1-4) AND S351T020-206 (3800298-1-7/3800298-1) ARE INTERCHANGEABLE WITH THE INCORPORATION OF ALLIED SIGNAL S/B GTCP331-49-7081 FOR NHA/OTHER SYS DET SEE: 49-11-00-01		RF

ILLUSTRATION ITEMS NOT ON PARTS LIST ARE NOT APPLICABLE

- ITEM NOT ILLUSTRATED

HXL

49-31-02-01

BOEING PROPRIETARY - Copyright © - Unpublished Work - See title page for details.

49-31-02
 FIG. 01
 PAGE 4
 DEC 22/06



767

PARTS CATALOG (MAINTENANCE)

FIG ITEM	PART NUMBER	1 2 3 4 5 6 7	NOMENCLATURE	EFFECT FROM TO	UNITS PER ASSY
1					
- 10	3800298-1-5		ENGINE ASSY-GAS TURB (APU FUEL CONTROL SOLENOID VALVE ONLY) MODEL GTCP331-200ER SUPPLIER CODE: V99193 SPECIFICATION NUMBER: S351T020-204 CONFIG CHG DATA FROM A CMM: REPLS 3800298-1-4 COMPONENT MAINT MANUAL REF: 49-22-11 QUALIFIED I/W DATA: S351T020-204 (3800298-1-5) AND S351T020-206 (3800298-1-7/3800298-1) ARE INTERCHANGEABLE WITH THE INCORPORATION OF ALLIED SIGNAL S/B GTCP331-49-7081 S351T020-204 (3800298-1-5) AND S351T020-205 (3800298-1-6) ARE INTERCHANGEABLE WITH THE INCORPORATION OF S/B 767-49-0025 FOR NHA/OTHER SYS DET SEE: 49-11-00-01		RF
- 10	3800298-1-6		ENGINE ASSY-GAS TURB (APU FUEL CONTROL SOLENOID VALVE ONLY) MODEL GTCP331-200ER SUPPLIER CODE: V99193 SPECIFICATION NUMBER: S351T020-205 CONFIG CHG DATA FROM A CMM: REPLS 3800298-1-5 COMPONENT MAINT MANUAL REF: 49-22-11 QUALIFIED I/W DATA: S351T020-204 (3800298-1-5) AND S351T020-205 (3800298-1-6) ARE INTERCHANGEABLE WITH THE INCORPORATION OF S/B		RF

ILLUSTRATION ITEMS NOT ON PARTS LIST ARE NOT APPLICABLE

- ITEM NOT ILLUSTRATED

49-31-02-01

49-31-02
FIG. 01
PAGE 5
DEC 22/06

HXL



767

PARTS CATALOG (MAINTENANCE)

FIG ITEM	PART NUMBER	1 2 3 4 5 6 7 NOMENCLATURE	EFFECT FROM TO	UNITS PER ASSY
1 10		767-49-0025 S351T020-203 (3800298-1-4) AND S351T020-205 (3800298-1-6) ARE INTERCHANGEABLE WITH INCORPORATION OF S/B 767-49-0025 S351T020-202 (3800298-1-3) AND S351T020-205 (3800298-1-6) ARE INTERCHANGEABLE WITH THE INCORPORATION OF S/B 767-49-0025 S351T020-201 (3800298-1-2) AND S351T020-205 (3800298-1-6) ARE INTERCHANGEABLE WITH THE INCORPORATION OF S/B 767-49-0025 S351T020-200 (3800298-1-1) AND S351T020-205 (3800298-1-6) ARE INTERCHANGEABLE WITH THE INCORPORATION OF S/B 767-49-0025 FOR NHA/OTHER SYS DET SEE: 49-11-00-01		
- 15	3800298-1-7	ENGINE ASSY-GAS TURB (APU FUEL CONTROL SOLENOID VALVE ONLY) MODEL GTCP331-200ER SUPPLIER CODE: V99193 SPECIFICATION NUMBER: S351T020-206 CONFIG CHG DATA FROM A CMM: REPLS 3800298-1-6 ELECTRICAL EQUIP NUMBER: M00967 COMPONENT MAINT MANUAL REF: 49-22-11 QUALIFIED I/W DATA: S351T020-203 (3800298-1-4) AND S351T020-206 ILLUSTRATION ITEMS NOT ON PARTS LIST ARE NOT APPLICABLE		RF

- ITEM NOT ILLUSTRATED

49-31-02-01

49-31-02
 FIG. 01
 PAGE 6
 DEC 22/06

HXL



767

PARTS CATALOG (MAINTENANCE)

FIG ITEM	PART NUMBER	1 2 3 4 5 6 7 NOMENCLATURE	EFFECT FROM TO	UNITS PER ASSY
1 15		<p>(3800298-1-7/3800298-1) ARE INTERCHANGEABLE WITH THE INCORPORATION OF ALLIED SIGNAL S/B GTCP331-49-7081. S351T020-204 (3800298-1-5) AND S351T020-206 (3800298-1-7/3800298-1) ARE INTERCHANGEABLE WITH THE INCORPORATION OF ALLIED SIGNAL S/B GTCP331-49-7081. S351T020-202 (3800298-1-3) AND S351T020-206 (3800298-1-7/3800298-1) ARE INTERCHANGEABLE WITH THE INCORPORATION OF ALLIED SIGNAL S/B GTCP331-49-7081 S351T020-201 (3800298-1-2) AND S351T020-206 (3800298-1-7/3800298-1) ARE INTERCHANGEABLE WITH THE INCORPORATION OF ALLIED SIGNAL S/B GTCP331-49-7081 S351T020-200 (3800298-1-1) AND S351T020-206 (3800298-1-7/3800298-1) ARE INTERCHANGEABLE WITH THE INCORPORATION OF ALLIED SIGNAL S/B GTCP331-49-7081</p>		
- 15	3800298-1	<p>OPTIONAL PART: 3800298-1 V99193 FOR NHA/OTHER SYS DET SEE: 49-11-00-01 ENGINE ASSY-GAS TURB (APU FUEL CONTROL SOLENOID VALVE ONLY) SUPPLIER CODE: V99193 SPECIFICATION NUMBER: S351T020-206</p>		RF

ILLUSTRATION ITEMS NOT ON PARTS LIST ARE NOT APPLICABLE

- ITEM NOT ILLUSTRATED

49-31-02-01

HXL

BOEING PROPRIETARY - Copyright © - Unpublished Work - See title page for details.

49-31-02
FIG. 01
PAGE 7
DEC 22/06



PARTS CATALOG (MAINTENANCE)

FIG ITEM	PART NUMBER	1 2 3 4 5 6 7 NOMENCLATURE	EFFECT FROM TO	UNITS PER ASSY
1		<p>COMPONENT MAINT MANUAL REF: 49-22-11</p> <p>QUALIFIED I/W DATA: S351T020-204 (3800298-1-5) AND S351T020-206 (3800298-1-7/3800298-1) ARE INTERCHANGEABLE WITH THE INCORPORATION OF ALLIED SIGNAL S/B GTCP331-49-7081 S351T020-203 (3800298-1-4) AND S351T020-206 (3800298-1-7/3800298-1) ARE INTERCHANGEABLE WITH THE INCORPORATION OF ALLIED SIGNAL S/B GTCP331-49-7081. S351T020-202 (3800298-1-3) AND S351T020-206 (3800298-1-7/3800298-1) ARE INTERCHANGEABLE WITH THE INCORPORATION OF ALLIED SIGNAL S/B GTCP331-49-7081 S351T020-201 (3800298-1-2) AND S351T020-206 (3800298-1-7/3800298-1) ARE INTERCHANGEABLE WITH THE INCORPORATION OF ALLIED SIGNAL S/B GTCP331-49-7081 S351T020-200 (3800298-1-1) AND S351T020-206 (3800298-1-7/3800298-1) ARE INTERCHANGEABLE WITH THE INCORPORATION OF ALLIED SIGNAL S/B GTCP331-49-7081</p> <p>OPTIONAL PART: 3800298-1-7 V99193</p> <p>FOR NHA/OTHER SYS DET SEE: 49-11-00-01</p> <p>ILLUSTRATION ITEMS NOT ON PARTS LIST ARE NOT APPLICABLE</p>		

- ITEM NOT ILLUSTRATED

49-31-02-01

49-31-02
FIG. 01
PAGE 8
DEC 22/06

HXL



767

PARTS CATALOG (MAINTENANCE)

FIG ITEM	PART NUMBER	1 2 3 4 5 6 7	NOMENCLATURE	EFFECT FROM TO	UNITS PER ASSY
1	50 3882500-9		. FUEL CONTROL ASSY- SUPPLIER CODE: V99193 NOT APPROVED FOR ETOPS AFTER INCORP OF SB: GTCP331-49-5888 V99193 GTCP331-49-5895 V99193 SB DATA FROM A CMM: PRE SB 49-5639 PRE SB 49-5640 COMPONENT MAINT MANUAL REF: 49-31-61 USED ON: 3800298-1-1 3800298-1-2 3800298-1-3 3800298-1-4 3800298-1-5 3800298-1-6		RF
	50 3882500-10		. FUEL CONTROL ASSY- SUPPLIER CODE: V99193 NOT APPROVED FOR ETOPS AFTER INCORP OF SB: GTCP331-49-5888 V99193 GTCP331-49-5895 V99193 SB DATA FROM A CMM: POST SB 49-5569 POST SB 49-5570 PRE SB 49-5672 CONFIG CHG DATA FROM A CMM: REPLS 3882500-11 REPLD BY 3882500-12 COMPONENT MAINT MANUAL REF: 49-31-61		RF

ILLUSTRATION ITEMS NOT ON PARTS LIST ARE NOT APPLICABLE

- ITEM NOT ILLUSTRATED

HXL

49-31-02-01

BOEING PROPRIETARY - Copyright © - Unpublished Work - See title page for details.

49-31-02
FIG. 01
PAGE 9
DEC 22/06



767

PARTS CATALOG (MAINTENANCE)

FIG ITEM	PART NUMBER	1 2 3 4 5 6 7	NOMENCLATURE	EFFECT FROM TO	UNITS PER ASSY
1 50	3882500-11		. FUEL CONTROL ASSY- SUPPLIER CODE: V99193 NOT APPROVED FOR ETOPS. SB DATA FROM A CMM: POST SB 49-5639 PRE SB 49-5569 PRE SB 49-5570 PRE SB 49-5672 CONFIG CHG DATA FROM A CMM: REPLD BY 3882500-10 REPLD BY 3882500-13 MISCELLANEOUS DATA: (USE ON 767 ER A/C) REWORKED FROM 3882500-6 AND 3882500-7 PER SB49-5640 REWORKED FROM 3882500-8 REWORKED FROM 3882500-9 COMPONENT MAINT MANUAL REF: 49-31-61		RF
50	3882500-12		. FUEL CONTROL ASSY- SUPPLIER CODE: V99193 NOT APPROVED FOR ETOPS AFTER INCORP OF SB: 49-5888 V99193 49-5895 V99193 SB DATA FROM A CMM: POST SB 49-5688 POST SB 49-5672 POST SB 49-5570 PRE SB 49-5888 PRE SB 49-5895 CONFIG CHG DATA FROM A CMM: REPLS 3882500-10 REPLD BY 3882500-14 MISCELLANEOUS DATA: REWORKED FROM 3800550-10 3800550-11 AND 3800550-13 PER SB49-5570 COMPONENT MAINT MANUAL REF: 49-31-61		RF

ILLUSTRATION ITEMS NOT ON PARTS LIST ARE NOT APPLICABLE

- ITEM NOT ILLUSTRATED

49-31-02-01

49-31-02
FIG. 01
PAGE 10
DEC 22/06

HXL



767

PARTS CATALOG (MAINTENANCE)

FIG ITEM	PART NUMBER	1 2 3 4 5 6 7	NOMENCLATURE	EFFECT FROM TO	UNITS PER ASSY
1 50	3882500-13		. FUEL CONTROL ASSY- SUPPLIER CODE: V99193 NOT APPROVED FOR ETOPS. SB DATA FROM A CMM: POST SB 49-5688 POST SB 49-5672 PRE SB 49-5888 PRE SB 49-5895 CONFIG CHG DATA FROM A CMM: REPLS 3882500-11 REPLD BY 3882500-15 MISCELLANEOUS DATA: REWORKED FROM 3882500-11 COMPONENT MAINT MANUAL REF: 49-31-61		RF
50	3882500-14		. FUEL CONTROL ASSY- SUPPLIER CODE: V99193 SB DATA FROM A CMM: POST SB 49-5888 POST SB 49-5895 PRE SB 49-6674 PRE SB 49-6778 PRE SB 49-7157 CONFIG CHG DATA FROM A CMM: REPLS 3882500-12 REPLD BY 3882500-16 REPLD BY 3882500-17 MISCELLANEOUS DATA: REWORKED FROM 3882500-12 3882500-13 AND 3882500-15 PER SB 49-48-9 COMPONENT MAINT MANUAL REF: 49-31-61		RF
50	3882500-15		. FUEL CONTROL ASSY- SUPPLIER CODE: V99193 NOT APPROVED FOR ETOPS. SB DATA FROM A CMM: POST SB 49-5888 POST SB 49-5895 CONFIG CHG DATA FROM A CMM: REPLS 3882500-13 MISCELLANEOUS DATA: REWORKED FROM 3882500-13 COMPONENT MAINT MANUAL REF: 49-31-61		RF

ILLUSTRATION ITEMS NOT ON PARTS LIST ARE NOT APPLICABLE

- ITEM NOT ILLUSTRATED

49-31-02-01

49-31-02
FIG. 01
PAGE 11
DEC 22/06

HXL

BOEING
767
PARTS CATALOG (MAINTENANCE)

FIG ITEM	PART NUMBER	1 2 3 4 5 6 7	NOMENCLATURE	EFFECT FROM TO	UNITS PER ASSY
1					
50	3882500-16		. FUEL CONTROL ASSY- SUPPLIER CODE: V99193 SB DATA FROM A CMM: POST SB 49-6778 POST SB 49-6674 CONFIG CHG DATA FROM A CMM: REPLS 3882500-14 REPLD BY 3882500-17 MISCELLANEOUS DATA: REWORKED FROM 3882500-14 COMPONENT MAINT MANUAL REF: 49-31-61		RF
50	3882500-17		. FUEL CONTROL ASSY- SUPPLIER CODE: V99193 SB DATA FROM A CMM: POST SB 49-7157 POST SB 49-7156 CONFIG CHG DATA FROM A CMM: REPLS 3882500-14 REPLS 3882500-16 COMPONENT MAINT MANUAL REF: 49-31-61		RF
55	NAS620-10L		.. WASHER-		4
60	S9425-3		.. NUT- SUPPLIER CODE: V99193		4
65	3876049-4		.. SOLENOID-FUEL VALVE SUPPLIER CODE: V06848 SB DATA FROM A CMM: POST SB 49-5386 COMPONENT MAINT MANUAL REF: 49-31-02 OPTIONAL PART: 4140066-5 V06848 USED ON: 3882500-9 3882500-10 3882500-11 3882500-12 3882500-13 3882500-14 3882500-15 3882500-16 3882500-17		1
ILLUSTRATION ITEMS NOT ON PARTS LIST ARE NOT APPLICABLE					

- ITEM NOT ILLUSTRATED

HXL

49-31-02-01

BOEING PROPRIETARY - Copyright © - Unpublished Work - See title page for details.

49-31-02
FIG. 01
PAGE 12
DEC 22/06

 **BOEING**
767
PARTS CATALOG (MAINTENANCE)

FIG ITEM	PART NUMBER	1 2 3 4 5 6 7	NOMENCLATURE	EFFECT FROM TO	UNITS PER ASSY
1					
65	4140066-5		..SOLENOID-FUEL VALVE SUPPLIER CODE: V06848 COMPONENT MAINT MANUAL REF: 49-31-02 OPTIONAL PART: 3876049-4 V34270 USED ON: 3882500-9 3882500-10 3882500-11 3882500-12 3882500-13 3882500-14 3882500-15 3882500-16		1
70	S9412-125		..PACKING- SUPPLIER CODE: V99193 OPTIONAL PART: M25988-2-125		1
70	M25988-2-125		..PACKING- OPTIONAL PART: S9412-125 V99193		1
75	S9412-122		..PACKING- SUPPLIER CODE: V99193 OPTIONAL PART: M25988-2-122		1
75	M25988-2-122		..PACKING- OPTIONAL PART: S9412-122 V99193		1
80	S9412-120		..PACKING- SUPPLIER CODE: V99193 OPTIONAL PART: M25988-2-120		1
80	M25988-2-120		..PACKING- OPTIONAL PART: S9412-120 V99193		1
900			ILLUSTRATION REFERENCE: ENGINE-GAS TURB (APU ENGINE FUEL SYSTEM ONLY) 49-31-00-01		RF
ILLUSTRATION ITEMS NOT ON PARTS LIST ARE NOT APPLICABLE					

- ITEM NOT ILLUSTRATED

HXL

49-31-02-01

BOEING PROPRIETARY - Copyright © - Unpublished Work - See title page for details.

49-31-02
FIG. 01
PAGE 13
DEC 22/06



767

PARTS CATALOG (MAINTENANCE)

FIG ITEM	PART NUMBER	1 2 3 4 5 6 7 NOMENCLATURE	EFFECT FROM TO	UNITS PER ASSY
1 905		ILLUSTRATION REFERENCE: ENGINE ASSY-GAS TURB (APU FUEL FILTER BYPASS VALVE ONLY) 49-31-05-01		RF
910		ILLUSTRATION REFERENCE: ENGINE ASSY-GAS TURB (APU FUEL FILTER DIFFERENTIAL PRESSURE INDICATOR ONLY) 49-31-10-01		RF

ILLUSTRATION ITEMS NOT ON PARTS LIST ARE NOT APPLICABLE

- ITEM NOT ILLUSTRATED

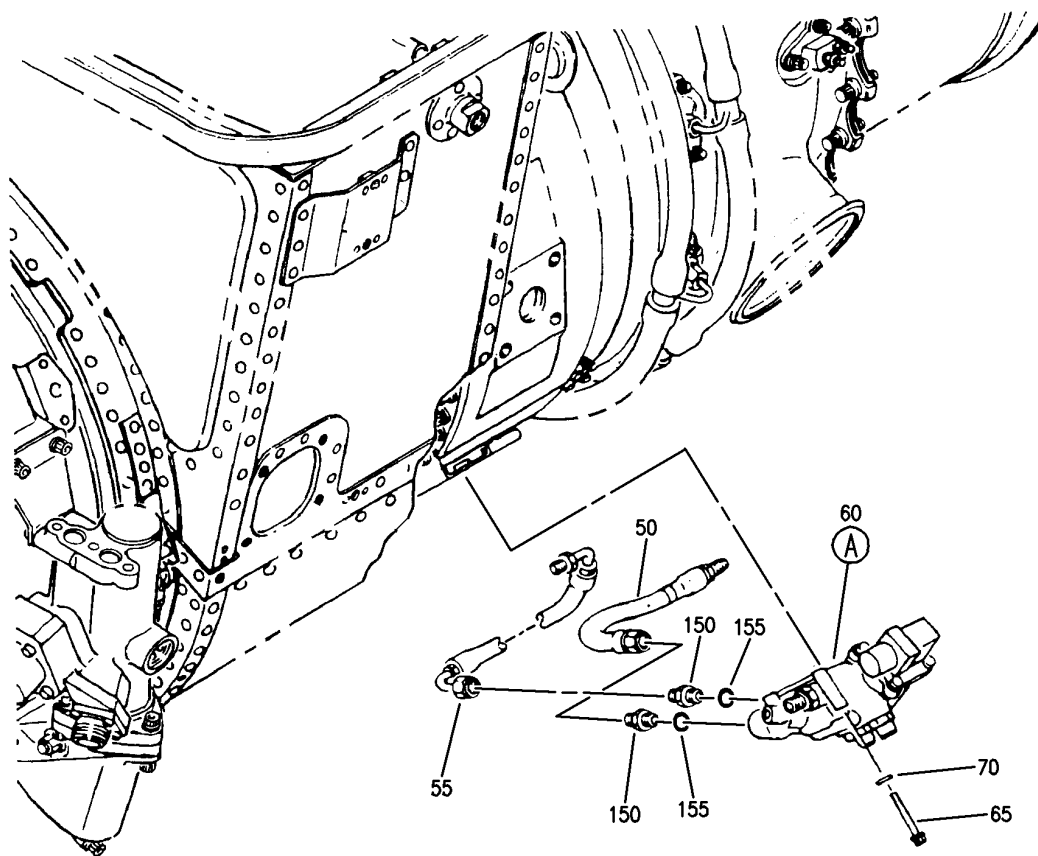
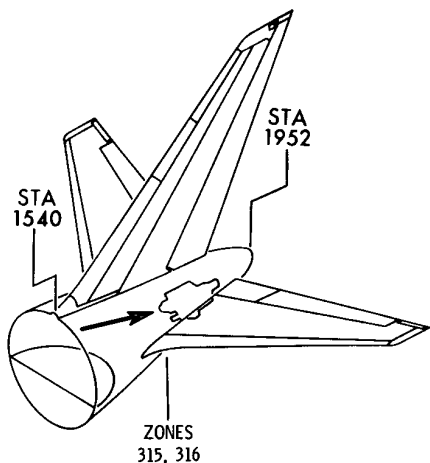
HXL

49-31-02-01

BOEING PROPRIETARY - Copyright © - Unpublished Work - See title page for details.

49-31-02
FIG. 01
PAGE 14
DEC 22/06

BOEING
767
PARTS CATALOG (MAINTENANCE)



V 49310301 SHT 1 REV 251

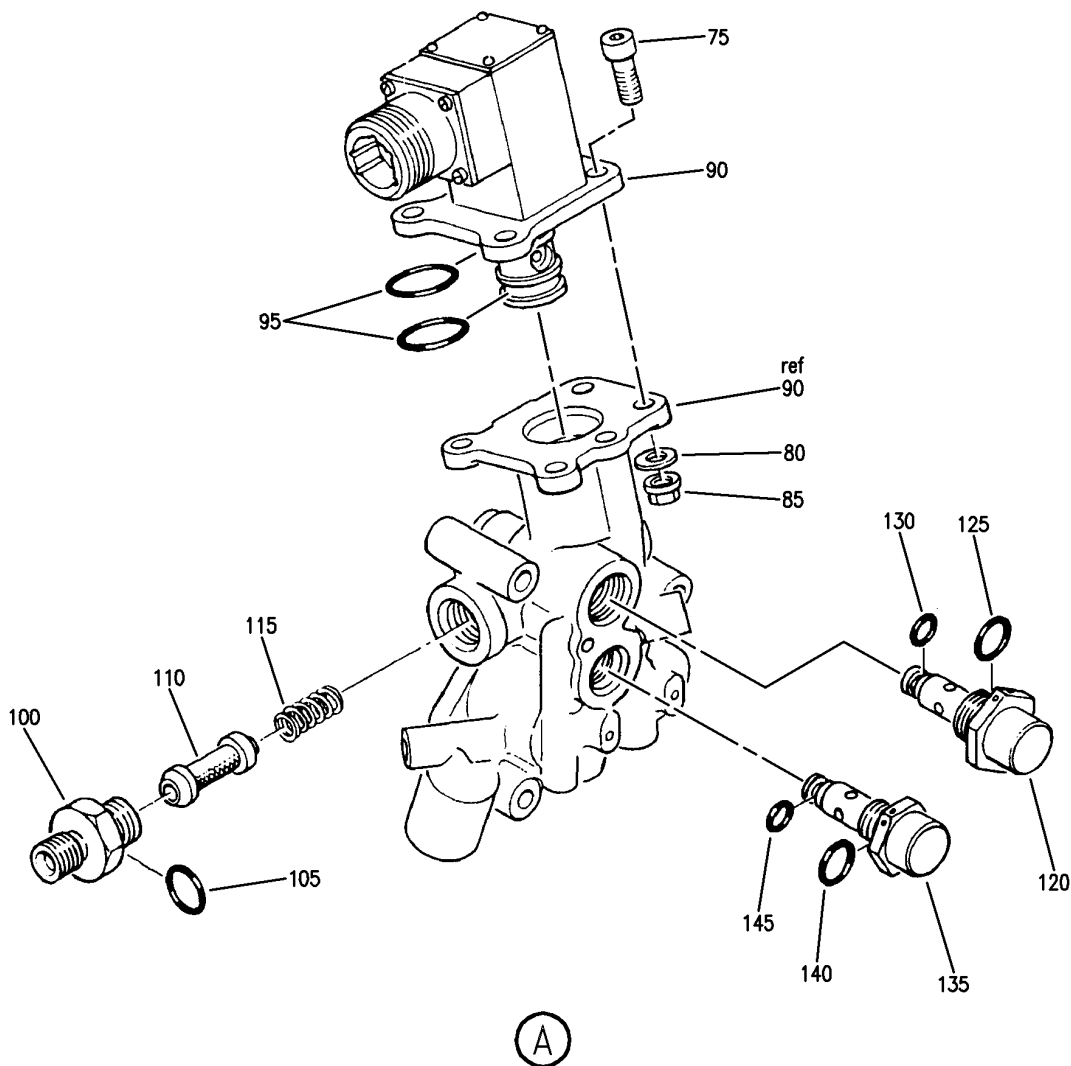
ENGINE ASSY-GAS TURB (APU FUEL FLOW DIVIDER AND SOLENOID VALVE ONLY)
FIGURE 1 (SHEET 1)

HXL
DEC 22/06

49-31-03-01

49-31-03-01
PAGE 0

BOEING
767
PARTS CATALOG (MAINTENANCE)



V 49-31-03-01 SHT 2 REV 252

ENGINE ASSY-GAS TURB (APU FUEL FLOW DIVIDER AND SOLENOID VALVE ONLY)
FIGURE 1 (SHEET 2)

49-31-03-01

HXL
DEC 22/06

49-31-03-01
PAGE 0A



767

PARTS CATALOG (MAINTENANCE)

FIG ITEM	PART NUMBER	1 2 3 4 5 6 7 NOMENCLATURE	EFFECT FROM TO	UNITS PER ASSY
1 - 10	3800298-1-1	ENGINE ASSY-GAS TURB (APU FUEL FLOW DIVIDER AND SOLENOID VALVE ONLY) ENGINE ASSY-GAS TURB (APU FUEL FLOW DIVIDER AND SOLENOID VALVE ONLY) MODEL GTCP331-200ER SUPPLIER CODE: V99193 SPECIFICATION NUMBER: S351T020-200 COMPONENT MAINT MANUAL REF: 49-22-11 QUALIFIED I/W DATA: S351T020-200 (3800298-1-1) AND S351T020-205 (3800298-1-6) ARE INTERCHANGEABLE WITH THE INCORPORATION OF S/B 767-49-0025 S351T020-200 (3800298-1-1) AND S351T020-206 (3800298-1-7/3800298-1) ARE INTERCHANGEABLE WITH THE INCORPORATION OF ALLIED SIGNAL S/B GTCP331-49-7081 FOR NHA/OTHER SYS DET SEE: 49-11-00-01		RF

ILLUSTRATION ITEMS NOT ON PARTS LIST ARE NOT APPLICABLE

- ITEM NOT ILLUSTRATED

HXL

49-31-03-01

BOEING PROPRIETARY - Copyright © - Unpublished Work - See title page for details.

49-31-03
 FIG. 01
 PAGE 1
 DEC 22/06



767

PARTS CATALOG (MAINTENANCE)

FIG ITEM	PART NUMBER	1 2 3 4 5 6 7 NOMENCLATURE	EFFECT FROM TO	UNITS PER ASSY
1 - 10	3800298-1-2	ENGINE ASSY-GAS TURB (APU FUEL FLOW DIVIDER AND SOLENOID VALVE ONLY) MODEL GTCP331-200ER SUPPLIER CODE: V99193 SPECIFICATION NUMBER: S351T020-201 CONFIG CHG DATA FROM A CMM: REPLS 3800298-1-1 COMPONENT MAINT MANUAL REF: 49-22-11 QUALIFIED I/W DATA: S351T020-201 (3800298-1-2) AND S351T020-205 (3800298-1-6) ARE INTERCHANGEABLE WITH THE INCORPORATION OF S/B 767-49-0025 S351T020-201 (3800298-1-2) AND S351T020-206 (3800298-1-7/3800298-1) ARE INTERCHANGEABLE WITH THE INCORPORATION OF ALLIED SIGNAL S/B GTCP331-49-7081 FOR NHA/OTHER SYS DET SEE: 49-11-00-01		RF

ILLUSTRATION ITEMS NOT ON PARTS LIST ARE NOT APPLICABLE

- ITEM NOT ILLUSTRATED

HXL

49-31-03-01

BOEING PROPRIETARY - Copyright © - Unpublished Work - See title page for details.

49-31-03
 FIG. 01
 PAGE 2
 DEC 22/06



767

PARTS CATALOG (MAINTENANCE)

FIG ITEM	PART NUMBER	1 2 3 4 5 6 7 NOMENCLATURE	EFFECT FROM TO	UNITS PER ASSY
1 - 10	3800298-1-3	ENGINE ASSY-GAS TURB (APU FUEL FLOW DIVIDER AND SOLENOID VALVE ONLY) MODEL GTCP331-200ER SUPPLIER CODE: V99193 SPECIFICATION NUMBER: S351T020-202 CONFIG CHG DATA FROM A CMM: REPLS 3800298-1-2 COMPONENT MAINT MANUAL REF: 49-22-11 QUALIFIED I/W DATA: S351T020-202 (3800298-1-3) AND S351T020-205 (3800298-1-6) ARE INTERCHANGEABLE WITH THE INCORPORATION OF S/B 767-49-0025 S351T020-202 (3800298-1-3) AND S351T020-206 (3800298-1-7/3800298-1) ARE INTERCHANGEABLE WITH THE INCORPORATION OF ALLIED SIGNAL S/B GTCP331-49-7081 FOR NHA/OTHER SYS DET SEE: 49-11-00-01		RF

ILLUSTRATION ITEMS NOT ON PARTS LIST ARE NOT APPLICABLE

- ITEM NOT ILLUSTRATED

HXL

49-31-03-01

BOEING PROPRIETARY - Copyright © - Unpublished Work - See title page for details.

49-31-03
 FIG. 01
 PAGE 3
 DEC 22/06



767

PARTS CATALOG (MAINTENANCE)

FIG ITEM	PART NUMBER	1 2 3 4 5 6 7 NOMENCLATURE	EFFECT FROM TO	UNITS PER ASSY
1 - 10	3800298-1-4	ENGINE ASSY-GAS TURB (APU FUEL FLOW DIVIDER AND SOLENOID VALVE ONLY) MODEL GTCP331-200ER SUPPLIER CODE: V99193 SPECIFICATION NUMBER: S351T020-203 CONFIG CHG DATA FROM A CMM: REPLS 3800298-1-3 COMPONENT MAINT MANUAL REF: 49-22-11 QUALIFIED I/W DATA: S351T020-203 (3800298-1-4) AND S351T020-205 (3800298-1-6) ARE INTERCHANGEABLE WITH THE INCORPORATION OF S/B 767-49-0025 S351T020-203 (3800298-1-4) AND S351T020-206 (3800298-1-7/3800298-1) ARE INTERCHANGEABLE WITH THE INCORPORATION OF ALLIED SIGNAL S/B GTCP331-49-7081 FOR NHA/OTHER SYS DET SEE: 49-11-00-01		RF

ILLUSTRATION ITEMS NOT ON PARTS LIST ARE NOT APPLICABLE

- ITEM NOT ILLUSTRATED

HXL

49-31-03-01

BOEING PROPRIETARY - Copyright © - Unpublished Work - See title page for details.

49-31-03
 FIG. 01
 PAGE 4
 DEC 22/06



767

PARTS CATALOG (MAINTENANCE)

FIG ITEM	PART NUMBER	1 2 3 4 5 6 7	NOMENCLATURE	EFFECT FROM TO	UNITS PER ASSY
1 - 10	3800298-1-5		ENGINE ASSY-GAS TURB (APU FUEL FLOW DIVIDER AND SOLENOID VALVE ONLY) MODEL GTCP331-200ER SUPPLIER CODE: V99193 SPECIFICATION NUMBER: S351T020-204 CONFIG CHG DATA FROM A CMM: REPLS 3800298-1-4 COMPONENT MAINT MANUAL REF: 49-22-11 QUALIFIED I/W DATA: S351T020-204 (3800298-1-5) AND S351T020-206 (3800298-1-7/3800298-1) ARE INTERCHANGEABLE WITH THE INCORPORATION OF ALLIED SIGNAL S/B GTCP331-49-7081 S351T020-204 (3800298-1-5) AND S351T020-205 (3800298-1-6) ARE INTERCHANGEABLE WITH THE INCORPORATION OF S/B 767-49-0025 FOR NHA/OTHER SYS DET SEE: 49-11-00-01		RF
- 10	3800298-1-6		ENGINE ASSY-GAS TURB (APU FUEL FLOW DIVIDER AND SOLENOID VALVE ONLY) MODEL GTCP331-200ER SUPPLIER CODE: V99193 SPECIFICATION NUMBER: S351T020-205 CONFIG CHG DATA FROM A CMM: REPLS 3800298-1-5 COMPONENT MAINT MANUAL REF: 49-22-11 QUALIFIED I/W DATA: S351T020-204 (3800298-1-5) AND S351T020-205 (3800298-1-6) ARE INTERCHANGEABLE WITH THE INCORPORATION OF S/B		RF

ILLUSTRATION ITEMS NOT ON PARTS LIST ARE NOT APPLICABLE

- ITEM NOT ILLUSTRATED

49-31-03-01

49-31-03
FIG. 01
PAGE 5
DEC 22/06

HXL



767

PARTS CATALOG (MAINTENANCE)

FIG ITEM	PART NUMBER	1 2 3 4 5 6 7 NOMENCLATURE	EFFECT FROM TO	UNITS PER ASSY
1 10		767-49-0025 S351T020-203 (3800298-1-4) AND S351T020-205 (3800298-1-6) ARE INTERCHANGEABLE WITH INCORPORATION OF S/B 767-49-0025 S351T020-202 (3800298-1-3) AND S351T020-205 (3800298-1-6) ARE INTERCHANGEABLE WITH THE INCORPORATION OF S/B 767-49-0025 S351T020-201 (3800298-1-2) AND S351T020-205 (3800298-1-6) ARE INTERCHANGEABLE WITH THE INCORPORATION OF S/B 767-49-0025 S351T020-200 (3800298-1-1) AND S351T020-205 (3800298-1-6) ARE INTERCHANGEABLE WITH THE INCORPORATION OF S/B 767-49-0025 FOR NHA/OTHER SYS DET SEE: 49-11-00-01		
- 15	3800298-1-6	ENGINE ASSY-GAS TURB (APU FUEL FLOW DIVIDER AND SOLENOID VALVE ONLY) MODEL GTCP331-200ER SUPPLIER CODE: V99193 SPECIFICATION NUMBER: S351T020-205 CONFIG CHG DATA FROM A CMM: REPLS 3800298-1-5 COMPONENT MAINT MANUAL REF: 49-22-11 QUALIFIED I/W DATA: S351T020-203 (3800298-1-4) AND S351T020-205 (3800298-1-6) ARE INTERCHANGEABLE WITH THE ILLUSTRATION ITEMS NOT ON PARTS LIST ARE NOT APPLICABLE		RF

- ITEM NOT ILLUSTRATED

49-31-03-01

49-31-03
 FIG. 01
 PAGE 6
 DEC 22/06

HXL



767

PARTS CATALOG (MAINTENANCE)

FIG ITEM	PART NUMBER	1 2 3 4 5 6 7 NOMENCLATURE	EFFECT FROM TO	UNITS PER ASSY
1 15		INCORPORATION OF ALLIED SIGNAL S/B GTCP331-49-7081. S351T020-204 (3800298-1-5) AND S351T020-205 (3800298-1-6) ARE INTERCHANGEABLE WITH THE INCORPORATION OF ALLIED SIGNAL S/B GTCP331-49-7081. S351T020-202 (3800298-1-3) AND S351T020-205 (3800298-1-6) ARE INTERCHANGEABLE WITH THE INCORPORATION OF ALLIED SIGNAL S/B GTCP331-49-7081. S351T020-201 (3800298-1-2) AND S351T020-205 (3800298-1-6) ARE INTERCHANGEABLE WITH THE INCORPORATION OF ALLIED SIGNAL S/B GTCP331-49-7081. S351T020-200 (3800298-1-1) AND S351T020-205 (3800298-1-6) ARE INTERCHANGEABLE WITH THE INCORPORATION OF ALLIED SIGNAL S/B GTCP331-49-7081. FOR NHA/OTHER SYS DET SEE: 49-11-00-01		
- 15	3800298-1-7	ENGINE ASSY-GAS TURB (APU FUEL FLOW DIVIDER AND SOLENOID VALVE ONLY) MODEL GTCP331-200ER SUPPLIER CODE: V99193 SPECIFICATION NUMBER: S351T020-206 CONFIG CHG DATA FROM A CMM: REPLS 3800298-1-6 ELECTRICAL EQUIP NUMBER: M00967 ILLUSTRATION ITEMS NOT ON PARTS LIST ARE NOT APPLICABLE		RF

- ITEM NOT ILLUSTRATED

49-31-03-01

49-31-03
 FIG. 01
 PAGE 7
 DEC 22/06

HXL



767

PARTS CATALOG (MAINTENANCE)

FIG ITEM	PART NUMBER	1 2 3 4 5 6 7 NOMENCLATURE	EFFECT FROM TO	UNITS PER ASSY
1		COMPONENT MAINT MANUAL REF: 49-22-11 QUALIFIED I/W DATA: S351T020-203 (3800298-1-4) AND S351T020-206 (3800298-1-7/3800298-1) ARE INTERCHANGEABLE WITH THE INCORPORATION OF ALLIED SIGNAL S/B GTCP331-49-7081. S351T020-204 (3800298-1-5) AND S351T020-206 (3800298-1-7/3800298-1) ARE INTERCHANGEABLE WITH THE INCORPORATION OF ALLIED SIGNAL S/B GTCP331-49-7081. S351T020-202 (3800298-1-3) AND S351T020-206 (3800298-1-7/3800298-1) ARE INTERCHANGEABLE WITH THE INCORPORATION OF ALLIED SIGNAL S/B GTCP331-49-7081 S351T020-201 (3800298-1-2) AND S351T020-206 (3800298-1-7/3800298-1) ARE INTERCHANGEABLE WITH THE INCORPORATION OF ALLIED SIGNAL S/B GTCP331-49-7081 S351T020-200 (3800298-1-1) AND S351T020-206 (3800298-1-7/3800298-1) ARE INTERCHANGEABLE WITH THE INCORPORATION OF ALLIED SIGNAL S/B GTCP331-49-7081 OPTIONAL PART: 3800298-1 V99193 FOR NHA/OTHER SYS DET SEE: 49-11-00-01 ENGINE ASSY-GAS TURB		
- 15	3800298-1	ENGINE ASSY-GAS TURB ILLUSTRATION ITEMS NOT ON PARTS LIST ARE NOT APPLICABLE		RF

- ITEM NOT ILLUSTRATED

49-31-03-01

HXL

BOEING PROPRIETARY - Copyright © - Unpublished Work - See title page for details.

49-31-03
 FIG. 01
 PAGE 8
 DEC 22/06



767

PARTS CATALOG (MAINTENANCE)

FIG ITEM	PART NUMBER	1 2 3 4 5 6 7 NOMENCLATURE	EFFECT FROM TO	UNITS PER ASSY
1 15		<p>(APU FUEL FLOW DIVIDER AND SOLENOID VALVE ONLY) SUPPLIER CODE: V99193 SPECIFICATION NUMBER: S351T020-206 COMPONENT MAINT MANUAL REF: 49-22-11 QUALIFIED I/W DATA: S351T020-204 (3800298-1-5) AND S351T020-206 (3800298-1-7/3800298-1) ARE INTERCHANGEABLE WITH THE INCORPORATION OF ALLIED SIGNAL S/B GTCP331-49-7081 S351T020-203 (3800298-1-4) AND S351T020-206 (3800298-1-7/3800298-1) ARE INTERCHANGEABLE WITH THE INCORPORATION OF ALLIED SIGNAL S/B GTCP331-49-7081. S351T020-202 (3800298-1-3) AND S351T020-206 (3800298-1-7/3800298-1) ARE INTERCHANGEABLE WITH THE INCORPORATION OF ALLIED SIGNAL S/B GTCP331-49-7081 S351T020-201 (3800298-1-2) AND S351T020-206 (3800298-1-7/3800298-1) ARE INTERCHANGEABLE WITH THE INCORPORATION OF ALLIED SIGNAL S/B GTCP331-49-7081 S351T020-200 (3800298-1-1) AND S351T020-206 (3800298-1-7/3800298-1) ARE INTERCHANGEABLE WITH THE INCORPORATION OF ALLIED SIGNAL S/B GTCP331-49-7081</p> <p>ILLUSTRATION ITEMS NOT ON PARTS LIST ARE NOT APPLICABLE</p>		

- ITEM NOT ILLUSTRATED

49-31-03-01

49-31-03
FIG. 01
PAGE 9
DEC 22/06

HXL



767

PARTS CATALOG (MAINTENANCE)

FIG ITEM	PART NUMBER	1 2 3 4 5 6 7	NOMENCLATURE	EFFECT FROM TO	UNITS PER ASSY
1			OPTIONAL PART: 3800298-1-7 V99193 FOR NHA/OTHER SYS DET SEE: 49-11-00-01		
50	3882432-1		.HOSE ASSY-MANIFOLD PRIMARY SUPPLIER CODE: V99193		1
55	3882433-1		.HOSE ASSY-MANIFOLD SECONDARY SUPPLIER CODE: V99193		1
60	3882550-1		.VALVE ASSY- SUPPLIER CODE: V99193 SB DATA FROM A CMM: PRE SB 49-5485 PRE SB 49-5486 COMPONENT MAINT MANUAL REF: 49-31-63		1
60	3882550-2		.VALVE ASSY- SUPPLIER CODE: V99193 SB DATA FROM A CMM: PRE SB 49-5961 POST SB 49-5485 POST SB 49-5486 CONFIG CHG DATA FROM A CMM: REPLD BY 3882550-3 COMPONENT MAINT MANUAL REF: 49-31-63		1
60	3882550-3		.VALVE ASSY- SUPPLIER CODE: V99193 SB DATA FROM A CMM: POST SB 49-5961 CONFIG CHG DATA FROM A CMM: REPLS 3882550-2 COMPONENT MAINT MANUAL REF: 49-31-63		1
65	MS21279-23		ATTACHING PARTS .BOLT- OPTIONAL PART: MS9556-23		3
65	MS9556-23		.BOLT- SB DATA FROM A CMM: POST SPB GTE0293 OPTIONAL PART: MS21279-23		3
ILLUSTRATION ITEMS NOT ON PARTS LIST ARE NOT APPLICABLE					

- ITEM NOT ILLUSTRATED

49-31-03-01

49-31-03
FIG. 01
PAGE 10
DEC 22/06

HXL

 **BOEING**
767
PARTS CATALOG (MAINTENANCE)

FIG ITEM	PART NUMBER	1 2 3 4 5 6 7	NOMENCLATURE	EFFECT FROM TO	UNITS PER ASSY
1					
70	NAS620C10L	.	WASHER-		3
		-----*	-----		
75	MS21279-09	..	BOLT-		4
80	AN960C10L	..	WASHER-		4
85	MS21043-3	..	NUT-		4
90	3876046-1	..	VALVE-NORMALLY CLOSED SOL. SUPPLIER CODE: V99193 SB DATA FROM A CMM: PRE SB 49-5485 USED ON: 3882550-1		1
90	3876046-4	..	VALVE-NORMALLY CLOSED SOL. SUPPLIER CODE: V06848 SB DATA FROM A CMM: POST SB 49-5485 COMPONENT MAINT MANUAL REF: 49-31-15 USED ON: 3882550-2 3882550-3		1
95	S9412-016	..	PACKING- SUPPLIER CODE: V99193 OPTIONAL PART: M25988-2-016		2
95	M2598-2-016	..	PACKING- OPTIONAL PART: S9412-016 V99193		2
100	3882541-1	..	REDUCER-SPCL FLARELESS SUPPLIER CODE: V99193		1
105	S9412-555	..	PACKING- SUPPLIER CODE: V99193 OPTIONAL PART: M83248-1-905		1
105	M83248-1-905	..	PACKING- OPTIONAL PART: S9412-555 V99193		1

ILLUSTRATION ITEMS NOT ON PARTS LIST ARE NOT APPLICABLE

— ITEM NOT ILLUSTRATED

HXL

49-31-03-01

BOEING PROPRIETARY - Copyright © - Unpublished Work - See title page for details.

49-31-03
FIG. 01
PAGE 11
DEC 22/06

 **BOEING**
767
PARTS CATALOG (MAINTENANCE)

FIG ITEM	PART NUMBER	1 2 3 4 5 6 7	NOMENCLATURE	EFFECT FROM TO	UNITS PER ASSY
1					
110	870886-2		..ELEMENT-FILTER SUPPLIER CODE: V99193 SB DATA FROM A CMM: PRE SB 49-5960 CONFIG CHG DATA FROM A CMM: REPLD BY 3882892-2		1
110	3882892-2		..ELEMENT-FILTER SUPPLIER CODE: V99193 SB DATA FROM A CMM: POST SB 49-5960 CONFIG CHG DATA FROM A CMM: REPLS 870886-2		1
115	97955		..SPRING- SUPPLIER CODE: V99193		1
120	3882639-2		..VALVE-FUEL CHK RUN SUPPLIER CODE: V99193 COMPONENT MAINT MANUAL REF: 49-31-59		1
125	S9412-556		..PACKING- SUPPLIER CODE: V99193 OPTIONAL PART: M25988-2-906		1
125	M25988-2-906		..PACKING- OPTIONAL PART: S9412-556 V99193		1
130	S9412-009		..PACKING- SUPPLIER CODE: V99193 OPTIONAL PART: M25988-2-009		1
130	M25988-2-009		..PACKING- OPTIONAL PART: S9412-009 V99193		1
135	3882639-1		..VALVE-FUEL CHK START SUPPLIER CODE: V99193 COMPONENT MAINT MANUAL REF: 49-31-59		1

ILLUSTRATION ITEMS NOT ON PARTS LIST ARE NOT APPLICABLE

— ITEM NOT ILLUSTRATED

HXL

49-31-03-01

BOEING PROPRIETARY - Copyright © - Unpublished Work - See title page for details.

49-31-03
FIG. 01
PAGE 12
DEC 22/06



767

PARTS CATALOG (MAINTENANCE)

FIG ITEM	PART NUMBER	1 2 3 4 5 6 7	NOMENCLATURE	EFFECT FROM TO	UNITS PER ASSY
1					
140	S9412-554	..	PACKING- SUPPLIER CODE: V99193 OPTIONAL PART: S9412-557 V99193 M25988-2-907		1
140	S9412-557	..	PACKING- SUPPLIER CODE: V99193 OPTIONAL PART: S9412-554 V99193 M25988-2-907		1
140	M25988-2-907	..	PACKING- OPTIONAL PART: S9412-557 V99193 S9412-554 V99193		1
145	S9412-009	..	PACKING- SUPPLIER CODE: V99193 OPTIONAL PART: M25988-2-009		1
145	M25988-2-009	..	PACKING- OPTIONAL PART: S9412-009 V99193		1
150	MS21902J4	.UNION-	SB DATA FROM A CMM: POST SB 49-5634 CONFIG CHG DATA FROM A CMM: REPLACES MS21902D4 USED ON: 3800298-1-1 3800298-1-2 3800298-1-3 3800298-1-4 3800298-1-5 3800298-1-6 3800298-1-7		2
155	S9412-554	.PACKING-	SUPPLIER CODE: V99193 OPTIONAL PART: M25988-2-904		2

ILLUSTRATION ITEMS NOT ON PARTS LIST ARE NOT APPLICABLE

- ITEM NOT ILLUSTRATED

49-31-03-01

49-31-03
FIG. 01
PAGE 13
DEC 22/06

HXL

BOEING PROPRIETARY - Copyright © - Unpublished Work - See title page for details.



767
PARTS CATALOG (MAINTENANCE)

FIG ITEM	PART NUMBER	1 2 3 4 5 6 7	NOMENCLATURE	EFFECT FROM TO	UNITS PER ASSY
1 155	M25988-2-904		.PACKING- OPTIONAL PART: S9412-554 V99193		2

ILLUSTRATION ITEMS NOT ON PARTS LIST ARE NOT APPLICABLE

- ITEM NOT ILLUSTRATED

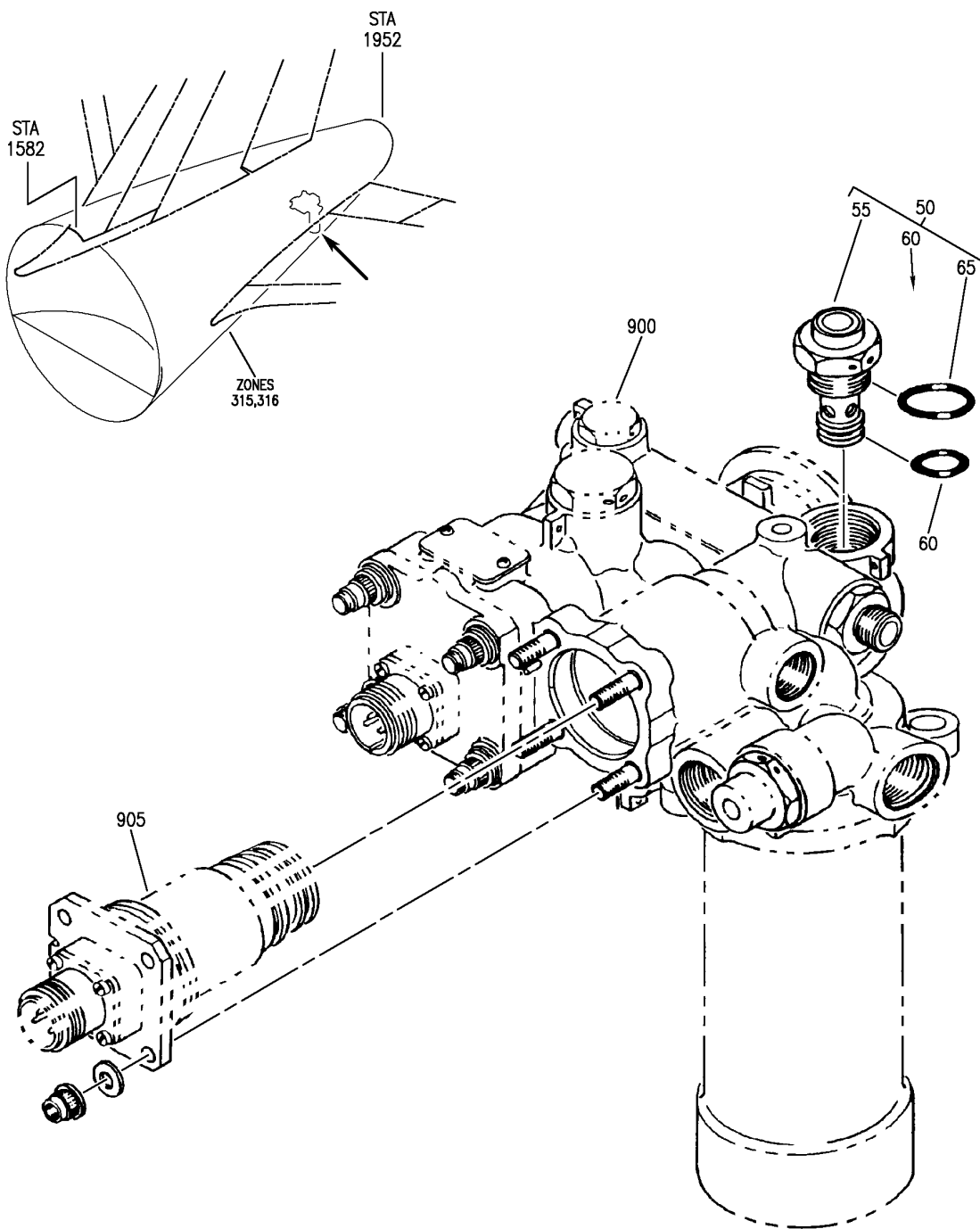
HXL

49-31-03-01

BOEING PROPRIETARY - Copyright © - Unpublished Work - See title page for details.

49-31-03
FIG. 01
PAGE 14
DEC 22/06

BOEING
767
PARTS CATALOG (MAINTENANCE)



V 49310501 REV 252

ENGINE ASSY-GAS TURB (APU FUEL FILTER BYPASS VALVE ONLY)
FIGURE 1

49-31-05-01

HXL
DEC 22/06

49-31-05-01
PAGE 0



767

PARTS CATALOG (MAINTENANCE)

FIG ITEM	PART NUMBER	1 2 3 4 5 6 7 NOMENCLATURE	EFFECT FROM TO	UNITS PER ASSY
1 - 10	3800298-1-1	ENGINE ASSY-GAS TURB (APU FUEL FILTER BYPASS VALVE ONLY) ENGINE ASSY-GAS TURB (APU FUEL FILTER BYPASS VALVE ONLY) MODEL GTCP331-200ER SUPPLIER CODE: V99193 SPECIFICATION NUMBER: S351T020-200 COMPONENT MAINT MANUAL REF: 49-22-11 QUALIFIED I/W DATA: S351T020-200 (3800298-1-1) AND S351T020-205 (3800298-1-6) ARE INTERCHANGEABLE WITH THE INCORPORATION OF S/B 767-49-0025 S351T020-200 (3800298-1-1) AND S351T020-206 (3800298-1-7/3800298-1) ARE INTERCHANGEABLE WITH THE INCORPORATION OF ALLIED SIGNAL S/B GTCP331-49-7081 FOR NHA/OTHER SYS DET SEE: 49-11-00-01		RF

ILLUSTRATION ITEMS NOT ON PARTS LIST ARE NOT APPLICABLE

- ITEM NOT ILLUSTRATED

HXL

49-31-05-01

BOEING PROPRIETARY - Copyright © - Unpublished Work - See title page for details.

49-31-05
 FIG. 01
 PAGE 1
 DEC 22/06



767

PARTS CATALOG (MAINTENANCE)

FIG ITEM	PART NUMBER	1 2 3 4 5 6 7 NOMENCLATURE	EFFECT FROM TO	UNITS PER ASSY
1 - 10	3800298-1-2	ENGINE ASSY-GAS TURB (APU FUEL FILTER BYPASS VALVE ONLY) MODEL GTCP331-200ER SUPPLIER CODE: V99193 SPECIFICATION NUMBER: S351T020-201 CONFIG CHG DATA FROM A CMM: REPLS 3800298-1-1 COMPONENT MAINT MANUAL REF: 49-22-11 QUALIFIED I/W DATA: S351T020-201 (3800298-1-2) AND S351T020-205 (3800298-1-6) ARE INTERCHANGEABLE WITH THE INCORPORATION OF S/B 767-49-0025 S351T020-201 (3800298-1-2) AND S351T020-206 (3800298-1-7/3800298-1) ARE INTERCHANGEABLE WITH THE INCORPORATION OF ALLIED SIGNAL S/B GTCP331-49-7081 FOR NHA/OTHER SYS DET SEE: 49-11-00-01		RF

ILLUSTRATION ITEMS NOT ON PARTS LIST ARE NOT APPLICABLE

- ITEM NOT ILLUSTRATED

HXL

49-31-05-01

BOEING PROPRIETARY - Copyright © - Unpublished Work - See title page for details.

49-31-05
 FIG. 01
 PAGE 2
 DEC 22/06



767

PARTS CATALOG (MAINTENANCE)

FIG ITEM	PART NUMBER	1 2 3 4 5 6 7 NOMENCLATURE	EFFECT FROM TO	UNITS PER ASSY
1 - 10	3800298-1-3	ENGINE ASSY-GAS TURB (APU FUEL FILTER BYPASS VALVE ONLY) MODEL GTCP331-200ER SUPPLIER CODE: V99193 SPECIFICATION NUMBER: S351T020-202 CONFIG CHG DATA FROM A CMM: REPLS 3800298-1-2 COMPONENT MAINT MANUAL REF: 49-22-11 QUALIFIED I/W DATA: S351T020-202 (3800298-1-3) AND S351T020-205 (3800298-1-6) ARE INTERCHANGEABLE WITH THE INCORPORATION OF S/B 767-49-0025 S351T020-202 (3800298-1-3) AND S351T020-206 (3800298-1-7/3800298-1) ARE INTERCHANGEABLE WITH THE INCORPORATION OF ALLIED SIGNAL S/B GTCP331-49-7081 FOR NHA/OTHER SYS DET SEE: 49-11-00-01		RF

ILLUSTRATION ITEMS NOT ON PARTS LIST ARE NOT APPLICABLE

- ITEM NOT ILLUSTRATED

HXL

49-31-05-01

BOEING PROPRIETARY - Copyright © - Unpublished Work - See title page for details.

49-31-05
 FIG. 01
 PAGE 3
 DEC 22/06



767

PARTS CATALOG (MAINTENANCE)

FIG ITEM	PART NUMBER	1 2 3 4 5 6 7 NOMENCLATURE	EFFECT FROM TO	UNITS PER ASSY
1 - 10	3800298-1-4	ENGINE ASSY-GAS TURB (APU FUEL FILTER BYPASS VALVE ONLY) MODEL GTCP331-200ER SUPPLIER CODE: V99193 SPECIFICATION NUMBER: S351T020-203 CONFIG CHG DATA FROM A CMM: REPLS 3800298-1-3 COMPONENT MAINT MANUAL REF: 49-22-11 QUALIFIED I/W DATA: S351T020-203 (3800298-1-4) AND S351T020-205 (3800298-1-6) ARE INTERCHANGEABLE WITH THE INCORPORATION OF S/B 767-49-0025 S351T020-203 (3800298-1-4) AND S351T020-206 (3800298-1-7/3800298-1) ARE INTERCHANGEABLE WITH THE INCORPORATION OF ALLIED SIGNAL S/B GTCP331-49-7081 FOR NHA/OTHER SYS DET SEE: 49-11-00-01		RF

ILLUSTRATION ITEMS NOT ON PARTS LIST ARE NOT APPLICABLE

- ITEM NOT ILLUSTRATED

HXL

49-31-05-01

BOEING PROPRIETARY - Copyright © - Unpublished Work - See title page for details.

49-31-05
 FIG. 01
 PAGE 4
 DEC 22/06



767

PARTS CATALOG (MAINTENANCE)

FIG ITEM	PART NUMBER	1 2 3 4 5 6 7	NOMENCLATURE	EFFECT FROM TO	UNITS PER ASSY
1 - 10	3800298-1-5		ENGINE ASSY-GAS TURB (APU FUEL FILTER BYPASS VALVE ONLY) MODEL GTCP331-200ER SUPPLIER CODE: V99193 SPECIFICATION NUMBER: S351T020-204 CONFIG CHG DATA FROM A CMM: REPLS 3800298-1-4 COMPONENT MAINT MANUAL REF: 49-22-11 QUALIFIED I/W DATA: S351T020-204 (3800298-1-5) AND S351T020-206 (3800298-1-7/3800298-1) ARE INTERCHANGEABLE WITH THE INCORPORATION OF ALLIED SIGNAL S/B GTCP331-49-7081 S351T020-204 (3800298-1-5) AND S351T020-205 (3800298-1-6) ARE INTERCHANGEABLE WITH THE INCORPORATION OF S/B 767-49-0025 FOR NHA/OTHER SYS DET SEE: 49-11-00-01		RF
- 10	3800298-1-6		ENGINE ASSY-GAS TURB (APU FUEL FILTER BYPASS VALVE ONLY) MODEL GTCP331-200ER SUPPLIER CODE: V99193 SPECIFICATION NUMBER: S351T020-205 CONFIG CHG DATA FROM A CMM: REPLS 3800298-1-5 COMPONENT MAINT MANUAL REF: 49-22-11 QUALIFIED I/W DATA: S351T020-204 (3800298-1-5) AND S351T020-205 (3800298-1-6) ARE INTERCHANGEABLE WITH THE INCORPORATION OF S/B		RF

ILLUSTRATION ITEMS NOT ON PARTS LIST ARE NOT APPLICABLE

- ITEM NOT ILLUSTRATED

49-31-05-01

49-31-05
FIG. 01
PAGE 5
DEC 22/06

HXL



767

PARTS CATALOG (MAINTENANCE)

FIG ITEM	PART NUMBER	1 2 3 4 5 6 7 NOMENCLATURE	EFFECT FROM TO	UNITS PER ASSY
1 10		767-49-0025 S351T020-203 (3800298-1-4) AND S351T020-205 (3800298-1-6) ARE INTERCHANGEABLE WITH INCORPORATION OF S/B 767-49-0025 S351T020-202 (3800298-1-3) AND S351T020-205 (3800298-1-6) ARE INTERCHANGEABLE WITH THE INCORPORATION OF S/B 767-49-0025 S351T020-201 (3800298-1-2) AND S351T020-205 (3800298-1-6) ARE INTERCHANGEABLE WITH THE INCORPORATION OF S/B 767-49-0025 S351T020-200 (3800298-1-1) AND S351T020-205 (3800298-1-6) ARE INTERCHANGEABLE WITH THE INCORPORATION OF S/B 767-49-0025 FOR NHA/OTHER SYS DET SEE: 49-11-00-01		
- 15	3800298-1-6	ENGINE ASSY-GAS TURB (APU FUEL FILTER BYPASS VALVE ONLY) MODEL GTCP331-200ER SUPPLIER CODE: V99193 SPECIFICATION NUMBER: S351T020-205 CONFIG CHG DATA FROM A CMM: REPLS 3800298-1-5 COMPONENT MAINT MANUAL REF: 49-22-11 QUALIFIED I/W DATA: S351T020-203 (3800298-1-4) AND S351T020-205 (3800298-1-6) ARE INTERCHANGEABLE WITH THE ILLUSTRATION ITEMS NOT ON PARTS LIST ARE NOT APPLICABLE		RF

- ITEM NOT ILLUSTRATED

49-31-05-01

49-31-05
 FIG. 01
 PAGE 6
 DEC 22/06

HXL



767

PARTS CATALOG (MAINTENANCE)

FIG ITEM	PART NUMBER	1 2 3 4 5 6 7 NOMENCLATURE	EFFECT FROM TO	UNITS PER ASSY
1 15		INCORPORATION OF ALLIED SIGNAL S/B GTCP331-49-7081. S351T020-204 (3800298-1-5) AND S351T020-205 (3800298-1-6) ARE INTERCHANGEABLE WITH THE INCORPORATION OF ALLIED SIGNAL S/B GTCP331-49-7081. S351T020-202 (3800298-1-3) AND S351T020-205 (3800298-1-6) ARE INTERCHANGEABLE WITH THE INCORPORATION OF ALLIED SIGNAL S/B GTCP331-49-7081. S351T020-201 (3800298-1-2) AND S351T020-205 (3800298-1-6) ARE INTERCHANGEABLE WITH THE INCORPORATION OF ALLIED SIGNAL S/B GTCP331-49-7081. S351T020-200 (3800298-1-1) AND S351T020-205 (3800298-1-6) ARE INTERCHANGEABLE WITH THE INCORPORATION OF ALLIED SIGNAL S/B GTCP331-49-7081. FOR NHA/OTHER SYS DET SEE: 49-11-00-01		
- 15	3800298-1-7	ENGINE ASSY-GAS TURB (APU FUEL FILTER BYPASS VALVE ONLY) MODEL GTCP331-200ER SUPPLIER CODE: V99193 SPECIFICATION NUMBER: S351T020-206 CONFIG CHG DATA FROM A CMM: REPLS 3800298-1-6 ELECTRICAL EQUIP NUMBER: M00967 ILLUSTRATION ITEMS NOT ON PARTS LIST ARE NOT APPLICABLE		RF

- ITEM NOT ILLUSTRATED

49-31-05-01

49-31-05
 FIG. 01
 PAGE 7
 DEC 22/06

HXL



PARTS CATALOG (MAINTENANCE)

FIG ITEM	PART NUMBER	1 2 3 4 5 6 7 NOMENCLATURE	EFFECT FROM TO	UNITS PER ASSY
1		<p>COMPONENT MAINT MANUAL REF: 49-22-11</p> <p>QUALIFIED I/W DATA: S351T020-203 (3800298-1-4) AND S351T020-206 (3800298-1-7/3800298-1) ARE INTERCHANGEABLE WITH THE INCORPORATION OF ALLIED SIGNAL S/B GTCP331-49-7081. S351T020-204 (3800298-1-5) AND S351T020-206 (3800298-1-7/3800298-1) ARE INTERCHANGEABLE WITH THE INCORPORATION OF ALLIED SIGNAL S/B GTCP331-49-7081. S351T020-202 (3800298-1-3) AND S351T020-206 (3800298-1-7/3800298-1) ARE INTERCHANGEABLE WITH THE INCORPORATION OF ALLIED SIGNAL S/B GTCP331-49-7081 S351T020-201 (3800298-1-2) AND S351T020-206 (3800298-1-7/3800298-1) ARE INTERCHANGEABLE WITH THE INCORPORATION OF ALLIED SIGNAL S/B GTCP331-49-7081 S351T020-200 (3800298-1-1) AND S351T020-206 (3800298-1-7/3800298-1) ARE INTERCHANGEABLE WITH THE INCORPORATION OF ALLIED SIGNAL S/B GTCP331-49-7081</p> <p>OPTIONAL PART: 3800298-1 V99193</p> <p>FOR NHA/OTHER SYS DET SEE: 49-11-00-01</p>		
- 15	3800298-1	<p>ENGINE ASSY-GAS TURB</p>		RF

ILLUSTRATION ITEMS NOT ON PARTS LIST ARE NOT APPLICABLE

- ITEM NOT ILLUSTRATED

49-31-05-01

HXL

BOEING PROPRIETARY - Copyright © - Unpublished Work - See title page for details.

49-31-05
FIG. 01
PAGE 8
DEC 22/06



767

PARTS CATALOG (MAINTENANCE)

FIG ITEM	PART NUMBER	1 2 3 4 5 6 7 NOMENCLATURE	EFFECT FROM TO	UNITS PER ASSY
1 15		<p>(APU FUEL FILTER BYPASS VALVE ONLY) SUPPLIER CODE: V99193 SPECIFICATION NUMBER: S351T020-206 COMPONENT MAINT MANUAL REF: 49-22-11 QUALIFIED I/W DATA: S351T020-204 (3800298-1-5) AND S351T020-206 (3800298-1-7/3800298-1) ARE INTERCHANGEABLE WITH THE INCORPORATION OF ALLIED SIGNAL S/B GTCP331-49-7081 S351T020-203 (3800298-1-4) AND S351T020-206 (3800298-1-7/3800298-1) ARE INTERCHANGEABLE WITH THE INCORPORATION OF ALLIED SIGNAL S/B GTCP331-49-7081. S351T020-202 (3800298-1-3) AND S351T020-206 (3800298-1-7/3800298-1) ARE INTERCHANGEABLE WITH THE INCORPORATION OF ALLIED SIGNAL S/B GTCP331-49-7081 S351T020-201 (3800298-1-2) AND S351T020-206 (3800298-1-7/3800298-1) ARE INTERCHANGEABLE WITH THE INCORPORATION OF ALLIED SIGNAL S/B GTCP331-49-7081 S351T020-200 (3800298-1-1) AND S351T020-206 (3800298-1-7/3800298-1) ARE INTERCHANGEABLE WITH THE INCORPORATION OF ALLIED SIGNAL S/B GTCP331-49-7081</p>		

ILLUSTRATION ITEMS NOT ON PARTS LIST ARE NOT APPLICABLE

- ITEM NOT ILLUSTRATED

49-31-05-01

49-31-05
 FIG. 01
 PAGE 9
 DEC 22/06

HXL



767

PARTS CATALOG (MAINTENANCE)

FIG ITEM	PART NUMBER	1 2 3 4 5 6 7	NOMENCLATURE	EFFECT FROM TO	UNITS PER ASSY
1			OPTIONAL PART: 3800298-1-7 V99193 FOR NHA/OTHER SYS DET SEE: 49-11-00-01		
50	3882500-9		. FUEL CONTROL ASSY- SUPPLIER CODE: V99193 NOT APPROVED FOR ETOPS AFTER INCORP OF SB: GTCP331-49-5888 V99193 GTCP331-49-5895 V99193 SB DATA FROM A CMM: PRE SB 49-5639 PRE SB 49-5640 COMPONENT MAINT MANUAL REF: 49-31-61 USED ON: 3800298-1-1 3800298-1-2 3800298-1-3 3800298-1-4 3800298-1-5 3800298-1-6		RF
50	3882500-10		. FUEL CONTROL ASSY- SUPPLIER CODE: V99193 NOT APPROVED FOR ETOPS AFTER INCORP OF SB: GTCP331-49-5888 V99193 GTCP331-49-5895 V99193 SB DATA FROM A CMM: POST SB 49-5569 POST SB 49-5570 PRE SB 49-5672 CONFIG CHG DATA FROM A CMM: REPLS 3882500-11 REPLD BY 3882500-12 COMPONENT MAINT MANUAL REF: 49-31-61		RF

ILLUSTRATION ITEMS NOT ON PARTS LIST ARE NOT APPLICABLE

- ITEM NOT ILLUSTRATED

49-31-05-01

49-31-05
FIG. 01
PAGE 10
DEC 22/06

HXL



767

PARTS CATALOG (MAINTENANCE)

FIG ITEM	PART NUMBER	1 2 3 4 5 6 7	NOMENCLATURE	EFFECT FROM TO	UNITS PER ASSY
1 50	3882500-11		. FUEL CONTROL ASSY- SUPPLIER CODE: V99193 NOT APPROVED FOR ETOPS. SB DATA FROM A CMM: POST SB 49-5639 PRE SB 49-5569 PRE SB 49-5570 PRE SB 49-5672 CONFIG CHG DATA FROM A CMM: REPLD BY 3882500-10 REPLD BY 3882500-13 MISCELLANEOUS DATA: (USE ON 767 ER A/C) REWORKED FROM 3882500-6 AND 3882500-7 PER SB49-5640 REWORKED FROM 3882500-8 REWORKED FROM 3882500-9 COMPONENT MAINT MANUAL REF: 49-31-61		RF
50	3882500-12		. FUEL CONTROL ASSY- SUPPLIER CODE: V99193 NOT APPROVED FOR ETOPS AFTER INCORP OF SB: 49-5888 V99193 49-5895 V99193 SB DATA FROM A CMM: POST SB 49-5688 POST SB 49-5672 POST SB 49-5570 PRE SB 49-5888 PRE SB 49-5895 CONFIG CHG DATA FROM A CMM: REPLS 3882500-10 REPLD BY 3882500-14 MISCELLANEOUS DATA: REWORKED FROM 3800550-10 3800550-11 AND 3800550-13 PER SB49-5570 COMPONENT MAINT MANUAL REF: 49-31-61		RF

ILLUSTRATION ITEMS NOT ON PARTS LIST ARE NOT APPLICABLE

- ITEM NOT ILLUSTRATED

49-31-05-01

49-31-05
FIG. 01
PAGE 11
DEC 22/06

HXL



767

PARTS CATALOG (MAINTENANCE)

FIG ITEM	PART NUMBER	1 2 3 4 5 6 7	NOMENCLATURE	EFFECT FROM TO	UNITS PER ASSY
1 50	3882500-13		. FUEL CONTROL ASSY- SUPPLIER CODE: V99193 NOT APPROVED FOR ETOPS. SB DATA FROM A CMM: POST SB 49-5688 POST SB 49-5672 PRE SB 49-5888 PRE SB 49-5895 CONFIG CHG DATA FROM A CMM: REPLS 3882500-11 REPLD BY 3882500-15 MISCELLANEOUS DATA: REWORKED FROM 3882500-11 COMPONENT MAINT MANUAL REF: 49-31-61		RF
50	3882500-14		. FUEL CONTROL ASSY- SUPPLIER CODE: V99193 SB DATA FROM A CMM: POST SB 49-5888 POST SB 49-5895 PRE SB 49-6674 PRE SB 49-6778 PRE SB 49-7157 CONFIG CHG DATA FROM A CMM: REPLS 3882500-12 REPLD BY 3882500-16 REPLD BY 3882500-17 MISCELLANEOUS DATA: REWORKED FROM 3882500-12 3882500-13 AND 3882500-15 PER SB 49-48-9 COMPONENT MAINT MANUAL REF: 49-31-61		RF
50	3882500-15		. FUEL CONTROL ASSY- SUPPLIER CODE: V99193 NOT APPROVED FOR ETOPS. SB DATA FROM A CMM: POST SB 49-5888 POST SB 49-5895 CONFIG CHG DATA FROM A CMM: REPLS 3882500-13 MISCELLANEOUS DATA: REWORKED FROM 3882500-13 COMPONENT MAINT MANUAL REF: 49-31-61		RF

ILLUSTRATION ITEMS NOT ON PARTS LIST ARE NOT APPLICABLE

- ITEM NOT ILLUSTRATED

49-31-05-01

49-31-05
FIG. 01
PAGE 12
DEC 22/06

HXL



767

PARTS CATALOG (MAINTENANCE)

FIG ITEM	PART NUMBER	1 2 3 4 5 6 7	NOMENCLATURE	EFFECT FROM TO	UNITS PER ASSY
1					
50	3882500-16		. FUEL CONTROL ASSY- SUPPLIER CODE: V99193 SB DATA FROM A CMM: POST SB 49-6778 POST SB 49-6674 CONFIG CHG DATA FROM A CMM: REPLS 3882500-14 REPLD BY 3882500-17 MISCELLANEOUS DATA: REWORKED FROM 3882500-14 COMPONENT MAINT MANUAL REF: 49-31-61		RF
50	3882500-17		. FUEL CONTROL ASSY- SUPPLIER CODE: V99193 SB DATA FROM A CMM: POST SB 49-7157 POST SB 49-7156 CONFIG CHG DATA FROM A CMM: REPLS 3882500-14 REPLS 3882500-16 COMPONENT MAINT MANUAL REF: 49-31-61		RF
55	3882481-1		.. VALVE-FUEL FILTER BYPASS SUPPLIER CODE: V99193		1
60	S9412-014		.. PACKING- SUPPLIER CODE: V99193 OPTIONAL PART: M25988-2-014		1
60	M25988-2-014		.. PACKING- OPTIONAL PART: S9412-014 V99193		1
65	S9412-558		.. PACKING- SUPPLIER CODE: V99193 OPTIONAL PART: M25988-2-908		1
65	M25988-2-908		.. PACKING- OPTIONAL PART: S9412-558 V99193		1
900			ILLUSTRATION REFERENCE: ENGINE-GAS TURB (APU ENGINE FUEL SYSTEM ONLY) 49-31-00-01		RF
ILLUSTRATION ITEMS NOT ON PARTS LIST ARE NOT APPLICABLE					

- ITEM NOT ILLUSTRATED

49-31-05-01

49-31-05
FIG. 01
PAGE 13
DEC 22/06

HXL



767
PARTS CATALOG (MAINTENANCE)

FIG ITEM	PART NUMBER	1 2 3 4 5 6 7	NOMENCLATURE	EFFECT FROM TO	UNITS PER ASSY
1 905			ILLUSTRATION REFERENCE: ENGINE ASSY-GAS TURB (APU FUEL CONTROL SOLENOID VALVE ONLY) 49-31-02-01		RF

ILLUSTRATION ITEMS NOT ON PARTS LIST ARE NOT APPLICABLE

- ITEM NOT ILLUSTRATED

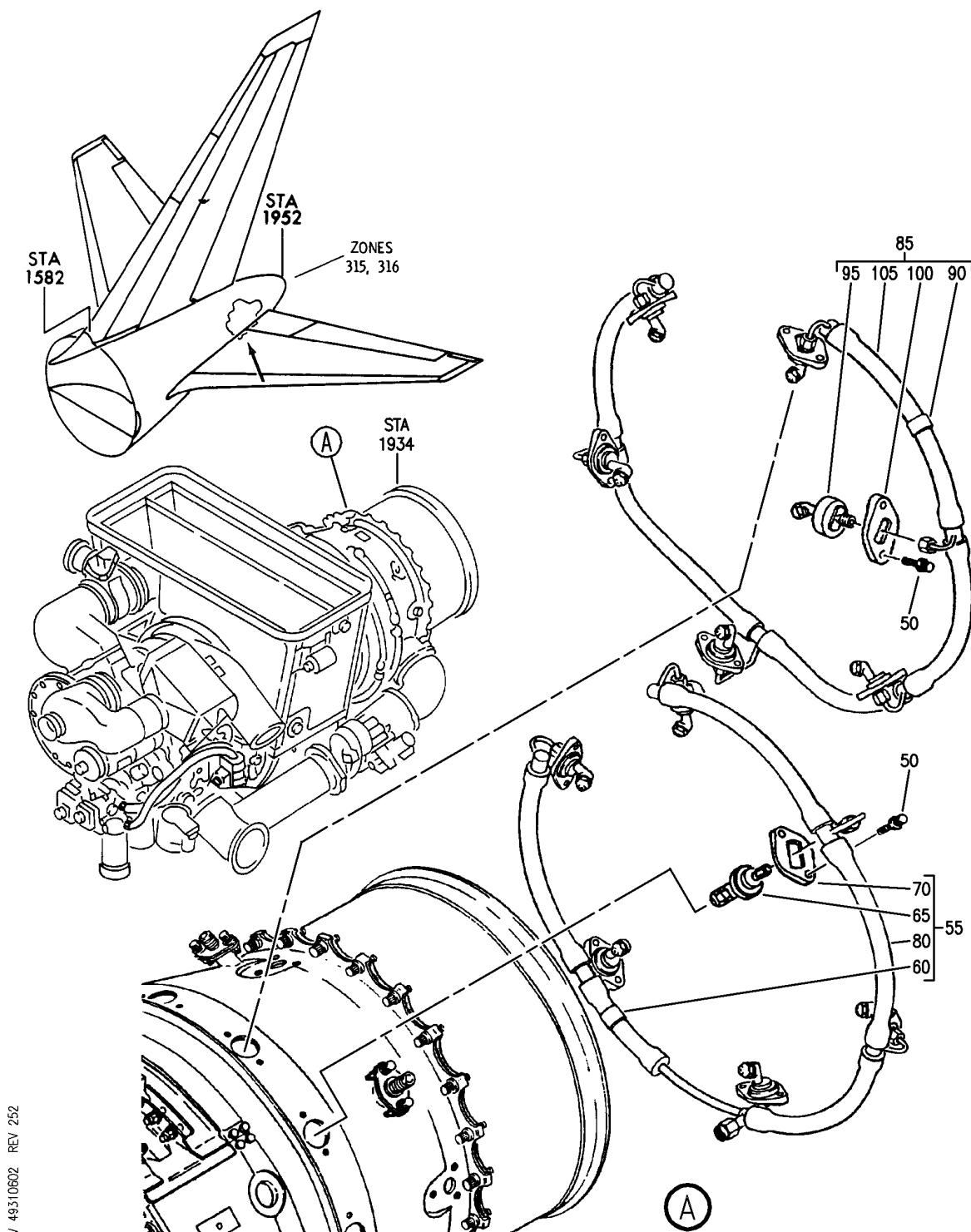
HXL

49-31-05-01

BOEING PROPRIETARY - Copyright © - Unpublished Work - See title page for details.

49-31-05
FIG. 01
PAGE 14
DEC 22/06

BOEING
767
PARTS CATALOG (MAINTENANCE)



V 49310602 REV 252

ENGINE ASSY-GAS TURB (APU FUEL MANIFOLD AND NOZZLE ONLY)
FIGURE 2

49-31-06-02

HXL
DEC 22/06

49-31-06-02
PAGE 0



767

PARTS CATALOG (MAINTENANCE)

FIG ITEM	PART NUMBER	1 2 3 4 5 6 7 NOMENCLATURE	EFFECT FROM TO	UNITS PER ASSY
2 - 10	3800298-1-1	ENGINE ASSY-GAS TURB (APU FUEL MANIFOLD AND NOZZLE ONLY) ENGINE ASSY-GAS TURB (APU FUEL MANIFOLD AND NOZZLE ONLY) MODEL GTCP331-200ER SUPPLIER CODE: V99193 SPECIFICATION NUMBER: S351T020-200 COMPONENT MAINT MANUAL REF: 49-22-11 QUALIFIED I/W DATA: S351T020-200 (3800298-1-1) AND S351T020-205 (3800298-1-6) ARE INTERCHANGEABLE WITH THE INCORPORATION OF S/B 767-49-0025 S351T020-200 (3800298-1-1) AND S351T020-206 (3800298-1-7/3800298-1) ARE INTERCHANGEABLE WITH THE INCORPORATION OF ALLIED SIGNAL S/B GTCP331-49-7081 FOR NHA/OTHER SYS DET SEE: 49-11-00-01		RF

ILLUSTRATION ITEMS NOT ON PARTS LIST ARE NOT APPLICABLE

- ITEM NOT ILLUSTRATED

HXL

49-31-06-02

BOEING PROPRIETARY - Copyright © - Unpublished Work - See title page for details.

49-31-06
 FIG. 02
 PAGE 1
 DEC 22/06



767

PARTS CATALOG (MAINTENANCE)

FIG ITEM	PART NUMBER	1 2 3 4 5 6 7 NOMENCLATURE	EFFECT FROM TO	UNITS PER ASSY
2 - 10	3800298-1-2	ENGINE ASSY-GAS TURB (APU FUEL MANIFOLD AND NOZZLE ONLY) MODEL GTCP331-200ER SUPPLIER CODE: V99193 SPECIFICATION NUMBER: S351T020-201 CONFIG CHG DATA FROM A CMM: REPLS 3800298-1-1 COMPONENT MAINT MANUAL REF: 49-22-11 QUALIFIED I/W DATA: S351T020-201 (3800298-1-2) AND S351T020-205 (3800298-1-6) ARE INTERCHANGEABLE WITH THE INCORPORATION OF S/B 767-49-0025 S351T020-201 (3800298-1-2) AND S351T020-206 (3800298-1-7/3800298-1) ARE INTERCHANGEABLE WITH THE INCORPORATION OF ALLIED SIGNAL S/B GTCP331-49-7081 FOR NHA/OTHER SYS DET SEE: 49-11-00-01		RF

ILLUSTRATION ITEMS NOT ON PARTS LIST ARE NOT APPLICABLE

- ITEM NOT ILLUSTRATED

HXL

49-31-06-02

BOEING PROPRIETARY - Copyright © - Unpublished Work - See title page for details.

49-31-06
 FIG. 02
 PAGE 2
 DEC 22/06



767

PARTS CATALOG (MAINTENANCE)

FIG ITEM	PART NUMBER	1 2 3 4 5 6 7 NOMENCLATURE	EFFECT FROM TO	UNITS PER ASSY
2 - 10	3800298-1-3	ENGINE ASSY-GAS TURB (APU FUEL MANIFOLD AND NOZZLE ONLY) MODEL GTCP331-200ER SUPPLIER CODE: V99193 SPECIFICATION NUMBER: S351T020-202 CONFIG CHG DATA FROM A CMM: REPLS 3800298-1-2 COMPONENT MAINT MANUAL REF: 49-22-11 QUALIFIED I/W DATA: S351T020-202 (3800298-1-3) AND S351T020-205 (3800298-1-6) ARE INTERCHANGEABLE WITH THE INCORPORATION OF S/B 767-49-0025 S351T020-202 (3800298-1-3) AND S351T020-206 (3800298-1-7/3800298-1) ARE INTERCHANGEABLE WITH THE INCORPORATION OF ALLIED SIGNAL S/B GTCP331-49-7081 FOR NHA/OTHER SYS DET SEE: 49-11-00-01		RF

ILLUSTRATION ITEMS NOT ON PARTS LIST ARE NOT APPLICABLE

- ITEM NOT ILLUSTRATED

HXL

49-31-06-02

BOEING PROPRIETARY - Copyright © - Unpublished Work - See title page for details.

49-31-06
 FIG. 02
 PAGE 3
 DEC 22/06



767

PARTS CATALOG (MAINTENANCE)

FIG ITEM	PART NUMBER	1 2 3 4 5 6 7 NOMENCLATURE	EFFECT FROM TO	UNITS PER ASSY
2 - 10	3800298-1-4	ENGINE ASSY-GAS TURB (APU FUEL MANIFOLD AND NOZZLE ONLY) MODEL GTCP331-200ER SUPPLIER CODE: V99193 SPECIFICATION NUMBER: S351T020-203 CONFIG CHG DATA FROM A CMM: REPLS 3800298-1-3 COMPONENT MAINT MANUAL REF: 49-22-11 QUALIFIED I/W DATA: S351T020-203 (3800298-1-4) AND S351T020-205 (3800298-1-6) ARE INTERCHANGEABLE WITH THE INCORPORATION OF S/B 767-49-0025 S351T020-203 (3800298-1-4) AND S351T020-206 (3800298-1-7/3800298-1) ARE INTERCHANGEABLE WITH THE INCORPORATION OF ALLIED SIGNAL S/B GTCP331-49-7081 FOR NHA/OTHER SYS DET SEE: 49-11-00-01		RF

ILLUSTRATION ITEMS NOT ON PARTS LIST ARE NOT APPLICABLE

- ITEM NOT ILLUSTRATED

HXL

49-31-06-02

BOEING PROPRIETARY - Copyright © - Unpublished Work - See title page for details.

49-31-06
 FIG. 02
 PAGE 4
 DEC 22/06



767

PARTS CATALOG (MAINTENANCE)

FIG ITEM	PART NUMBER	1 2 3 4 5 6 7	NOMENCLATURE	EFFECT FROM TO	UNITS PER ASSY
2 - 10	3800298-1-5		ENGINE ASSY-GAS TURB (APU FUEL MANIFOLD AND NOZZLE ONLY) MODEL GTCP331-200ER SUPPLIER CODE: V99193 SPECIFICATION NUMBER: S351T020-204 CONFIG CHG DATA FROM A CMM: REPLS 3800298-1-4 COMPONENT MAINT MANUAL REF: 49-22-11 QUALIFIED I/W DATA: S351T020-204 (3800298-1-5) AND S351T020-206 (3800298-1-7/3800298-1) ARE INTERCHANGEABLE WITH THE INCORPORATION OF ALLIED SIGNAL S/B GTCP331-49-7081 S351T020-204 (3800298-1-5) AND S351T020-205 (3800298-1-6) ARE INTERCHANGEABLE WITH THE INCORPORATION OF S/B 767-49-0025 FOR NHA/OTHER SYS DET SEE: 49-11-00-01		RF
- 10	3800298-1-6		ENGINE ASSY-GAS TURB (APU FUEL MANIFOLD AND NOZZLE ONLY) MODEL GTCP331-200ER SUPPLIER CODE: V99193 SPECIFICATION NUMBER: S351T020-205 CONFIG CHG DATA FROM A CMM: REPLS 3800298-1-5 COMPONENT MAINT MANUAL REF: 49-22-11 QUALIFIED I/W DATA: S351T020-204 (3800298-1-5) AND S351T020-205 (3800298-1-6) ARE INTERCHANGEABLE WITH THE INCORPORATION OF S/B		RF

ILLUSTRATION ITEMS NOT ON PARTS LIST ARE NOT APPLICABLE

- ITEM NOT ILLUSTRATED

49-31-06-02

49-31-06
FIG. 02
PAGE 5
DEC 22/06

HXL



767

PARTS CATALOG (MAINTENANCE)

FIG ITEM	PART NUMBER	1 2 3 4 5 6 7	NOMENCLATURE	EFFECT FROM TO	UNITS PER ASSY
2 10			767-49-0025 S351T020-203 (3800298-1-4) AND S351T020-205 (3800298-1-6) ARE INTERCHANGEABLE WITH INCORPORATION OF S/B 767-49-0025 S351T020-202 (3800298-1-3) AND S351T020-205 (3800298-1-6) ARE INTERCHANGEABLE WITH THE INCORPORATION OF S/B S351T020-201 (3800298-1-2) AND S351T020-205 (3800298-1-6) ARE INTERCHANGEABLE WITH THE INCORPORATION OF S/B 767-49-0025 S351T020-200 (3800298-1-1) AND S351T020-205 (3800298-1-6) ARE INTERCHANGEABLE WITH THE INCORPORATION OF S/B 767-49-0025 FOR NHA/OTHER SYS DET SEE: 49-11-00-01		
- 15	3800298-1-7		ENGINE ASSY-GAS TURB (APU FUEL MANIFOLD AND NOZZLE ONLY) MODEL GTCP331-200ER SUPPLIER CODE: V99193 SPECIFICATION NUMBER: S351T020-206 CONFIG CHG DATA FROM A CMM: REPLS 3800298-1-6 ELECTRICAL EQUIP NUMBER: M00967 COMPONENT MAINT MANUAL REF: 49-22-11 QUALIFIED I/W DATA: S351T020-203 (3800298-1-4) AND S351T020-206 (3800298-1-7/3800298-1)		RF
ILLUSTRATION ITEMS NOT ON PARTS LIST ARE NOT APPLICABLE					

- ITEM NOT ILLUSTRATED

49-31-06-02

49-31-06
 FIG. 02
 PAGE 6
 DEC 22/06

HXL



767

PARTS CATALOG (MAINTENANCE)

FIG ITEM	PART NUMBER	1 2 3 4 5 6 7 NOMENCLATURE	EFFECT FROM TO	UNITS PER ASSY
2 15		<p>ARE INTERCHANGEABLE WITH THE INCORPORATION OF ALLIED SIGNAL S/B GTCP331-49-7081. S351T020-204 (3800298-1-5) AND S351T020-206 (3800298-1-7/3800298-1) ARE INTERCHANGEABLE WITH THE INCORPORATION OF ALLIED SIGNAL S/B GTCP331-49-7081. S351T020-202 (3800298-1-3) AND S351T020-206 (3800298-1-7/3800298-1) ARE INTERCHANGEABLE WITH THE INCORPORATION OF ALLIED SIGNAL S/B GTCP331-49-7081 S351T020-201 (3800298-1-2) AND S351T020-206 (3800298-1-7/3800298-1) ARE INTERCHANGEABLE WITH THE INCORPORATION OF ALLIED SIGNAL S/B GTCP331-49-7081 S351T020-200 (3800298-1-1) AND S351T020-206 (3800298-1-7/3800298-1) ARE INTERCHANGEABLE WITH THE INCORPORATION OF ALLIED SIGNAL S/B GTCP331-49-7081</p> <p>OPTIONAL PART: 3800298-1 V99193</p> <p>FOR NHA/OTHER SYS DET SEE: 49-11-00-01</p>		
- 15	3800298-1	<p>ENGINE ASSY-GAS TURB (APU FUEL MANIFOLD AND NOZZLE ONLY) SUPPLIER CODE: V99193 SPECIFICATION NUMBER: S351T020-206 COMPONENT MAINT MANUAL REF:</p> <p>ILLUSTRATION ITEMS NOT ON PARTS LIST ARE NOT APPLICABLE</p>		RF

- ITEM NOT ILLUSTRATED

49-31-06-02

49-31-06
FIG. 02
PAGE 7
DEC 22/06

HXL



PARTS CATALOG (MAINTENANCE)

FIG ITEM	PART NUMBER	1 2 3 4 5 6 7 NOMENCLATURE	EFFECT FROM TO	UNITS PER ASSY
2 15		<p>49-22-11 QUALIFIED I/W DATA: S351T020-204 (3800298-1-5) AND S351T020-206 (3800298-1-7/3800298-1) ARE INTERCHANGEABLE WITH THE INCORPORATION OF ALLIED SIGNAL S/B GTCP331-49-7081 S351T020-203 (3800298-1-4) AND S351T020-206 (3800298-1-7/3800298-1) ARE INTERCHANGEABLE WITH THE INCORPORATION OF ALLIED SIGNAL S/B GTCP331-49-7081. S351T020-202 (3800298-1-3) AND S351T020-206 (3800298-1-7/3800298-1) ARE INTERCHANGEABLE WITH THE INCORPORATION OF ALLIED SIGNAL S/B GTCP331-49-7081 S351T020-201 (3800298-1-2) AND S351T020-206 (3800298-1-7/3800298-1) ARE INTERCHANGEABLE WITH THE INCORPORATION OF ALLIED SIGNAL S/B GTCP331-49-7081 S351T020-200 (3800298-1-1) AND S351T020-206 (3800298-1-7/3800298-1) ARE INTERCHANGEABLE WITH THE INCORPORATION OF ALLIED SIGNAL S/B GTCP331-49-7081 OPTIONAL PART: 3800298-1-7 V99193 FOR NHA/OTHER SYS DET SEE: 49-11-00-01</p>		

ILLUSTRATION ITEMS NOT ON PARTS LIST ARE NOT APPLICABLE

- ITEM NOT ILLUSTRATED

49-31-06-02

HXL

BOEING PROPRIETARY - Copyright © - Unpublished Work - See title page for details.

49-31-06
 FIG. 02
 PAGE 8
 DEC 22/06



767

PARTS CATALOG (MAINTENANCE)

FIG ITEM	PART NUMBER	1 2 3 4 5 6 7	NOMENCLATURE	EFFECT FROM TO	UNITS PER ASSY
2					
50	MS21288-08	.BOLT-	OPTIONAL PART: MS9565-08		24
50	MS9565-08	.BOLT-	SB DATA FROM A CMM: POST SPB GTE0306 OPTIONAL PART: MS21288-08		24
55	3882491-1	.NOZZLE AND MANIFOLD ASSY- PRIMARY	SUPPLIER CODE: V99193 SB DATA FROM A CMM: PRE SB 49-5625 CONFIG CHG DATA FROM A CMM: REPLD BY 3882491-2 COMPONENT MAINT MANUAL REF: 49-31-13		1
55	3882491-2	.NOZZLE AND MANIFOLD ASSY- PRIMARY	SUPPLIER CODE: V99193 SB DATA FROM A CMM: POST SB 49-5625 POST SB 49-5626 PRE SB 49-5908 PRE SB 49-5907 CONFIG CHG DATA FROM A CMM: REPLS 3882491-1 REPLD BY 3882491-3 COMPONENT MAINT MANUAL REF: 49-31-13		1
55	3882491-3	.NOZZLE AND MANIFOLD ASSY- PRIMARY	SUPPLIER CODE: V99193 SB DATA FROM A CMM: POST SB 49-5908 POST SB 49-5907 CONFIG CHG DATA FROM A CMM: REPLS 3882491-2 COMPONENT MAINT MANUAL REF: 49-31-13		1
60	NAS1411C013B010	..BAND-MARKER			1

ILLUSTRATION ITEMS NOT ON PARTS LIST ARE NOT APPLICABLE

- ITEM NOT ILLUSTRATED

HXL

49-31-06-02

BOEING PROPRIETARY - Copyright © - Unpublished Work - See title page for details.

49-31-06
FIG. 02
PAGE 9
DEC 22/06



767

PARTS CATALOG (MAINTENANCE)

FIG ITEM	PART NUMBER	1 2 3 4 5 6 7	NOMENCLATURE	EFFECT FROM TO	UNITS PER ASSY
2 65	3830057-1		..NOZZLE ASSY- SUPPLIER CODE: V99193 SB DATA FROM A CMM: PRE SB 49-5626 CONFIG CHG DATA FROM A CMM: REPLD BY 3830057-7 USED ON: 3882491-1		6
65	3830057-7		..NOZZLE ASSY- SUPPLIER CODE: V99193 SB DATA FROM A CMM: POST SB 49-5626 CONFIG CHG DATA FROM A CMM: REPLS 3830057-1 USED ON: 3882491-2 3882491-3		6
70	3830055-1		..RETAINER- SUPPLIER CODE: V99193 SB DATA FROM A CMM: PRE SB 49-5907 CONFIG CHG DATA FROM A CMM: REPLD BY 3613619-1 USED ON: 3882491-1 3882491-2		6
70	3613619-1		..RETAINER- SUPPLIER CODE: V99193 SB DATA FROM A CMM: POST SB 49-5907 CONFIG CHG DATA FROM A CMM: REPLS 3830055-1 USED ON: 3882491-3		6
80	3882426-1		..FUEL MANIFOLD- SUPPLIER CODE: V99193		1

ILLUSTRATION ITEMS NOT ON PARTS LIST ARE NOT APPLICABLE

- ITEM NOT ILLUSTRATED

HXL

49-31-06-02

BOEING PROPRIETARY - Copyright © - Unpublished Work - See title page for details.

49-31-06
FIG. 02
PAGE 10
DEC 22/06



767

PARTS CATALOG (MAINTENANCE)

FIG ITEM	PART NUMBER	1 2 3 4 5 6 7	NOMENCLATURE	EFFECT FROM TO	UNITS PER ASSY
2					
85	3882492-1		.NOZZLE AND MANIFOLD ASSY- SECONDARY SUPPLIER CODE: V99193 SB DATA FROM A CMM: PRE SB 49-5370 CONFIG CHG DATA FROM A CMM: REPLD BY 3882492-2 COMPONENT MAINT MANUAL REF: 49-31-13		1
85	3882492-2		.NOZZLE AND MANIFOLD ASSY- SECONDARY SUPPLIER CODE: V99193 SB DATA FROM A CMM: POST SB 49-5370 PRE SB 49-5908 PRE SB 49-5907 CONFIG CHG DATA FROM A CMM: REPLS 3882492-1 REPLD BY 3882492-5 COMPONENT MAINT MANUAL REF: 49-31-13		1
85	3882492-5		.NOZZLE AND MANIFOLD ASSY- SECONDARY SUPPLIER CODE: V99193 SB DATA FROM A CMM: POST SB 49-5907 POST SB 49-5908 CONFIG CHG DATA FROM A CMM: REPLS 3882492-2 COMPONENT MAINT MANUAL REF: 49-31-13		1
90	NAS1411C013B010		..BAND-MARKER		1
95	3830057-2		..NOZZLE ASSY- SUPPLIER CODE: V99193 SB DATA FROM A CMM: PRE SB 49-5370 USED ON: 3882492-1		6

ILLUSTRATION ITEMS NOT ON PARTS LIST ARE NOT APPLICABLE

- ITEM NOT ILLUSTRATED

HXL

49-31-06-02

BOEING PROPRIETARY - Copyright © - Unpublished Work - See title page for details.

49-31-06
FIG. 02
PAGE 11
DEC 22/06



767

PARTS CATALOG (MAINTENANCE)

FIG ITEM	PART NUMBER	1 2 3 4 5 6 7	NOMENCLATURE	EFFECT FROM TO	UNITS PER ASSY
2 95	3830057-6		..NOZZLE ASSY- SUPPLIER CODE: V99193 SB DATA FROM A CMM: POST SB 49-5370 USED ON: 3882492-2 3882492-5		6
100	3830055-1		..RETAINER- SUPPLIER CODE: V99193 SB DATA FROM A CMM: PRE SB 49-5907 CONFIG CHG DATA FROM A CMM: REPLD BY 3613619-1 USED ON: 3882492-1 3882492-2		6
100	3613619-1		..RETAINER- SUPPLIER CODE: V99193 SB DATA FROM A CMM: POST SB 49-5907 CONFIG CHG DATA FROM A CMM: REPLS 3830055-1 USED ON: 3882492-5		6
105	3882427-1		..FUEL MANIFOLD- SUPPLIER CODE: V99193		1

ILLUSTRATION ITEMS NOT ON PARTS LIST ARE NOT APPLICABLE

- ITEM NOT ILLUSTRATED

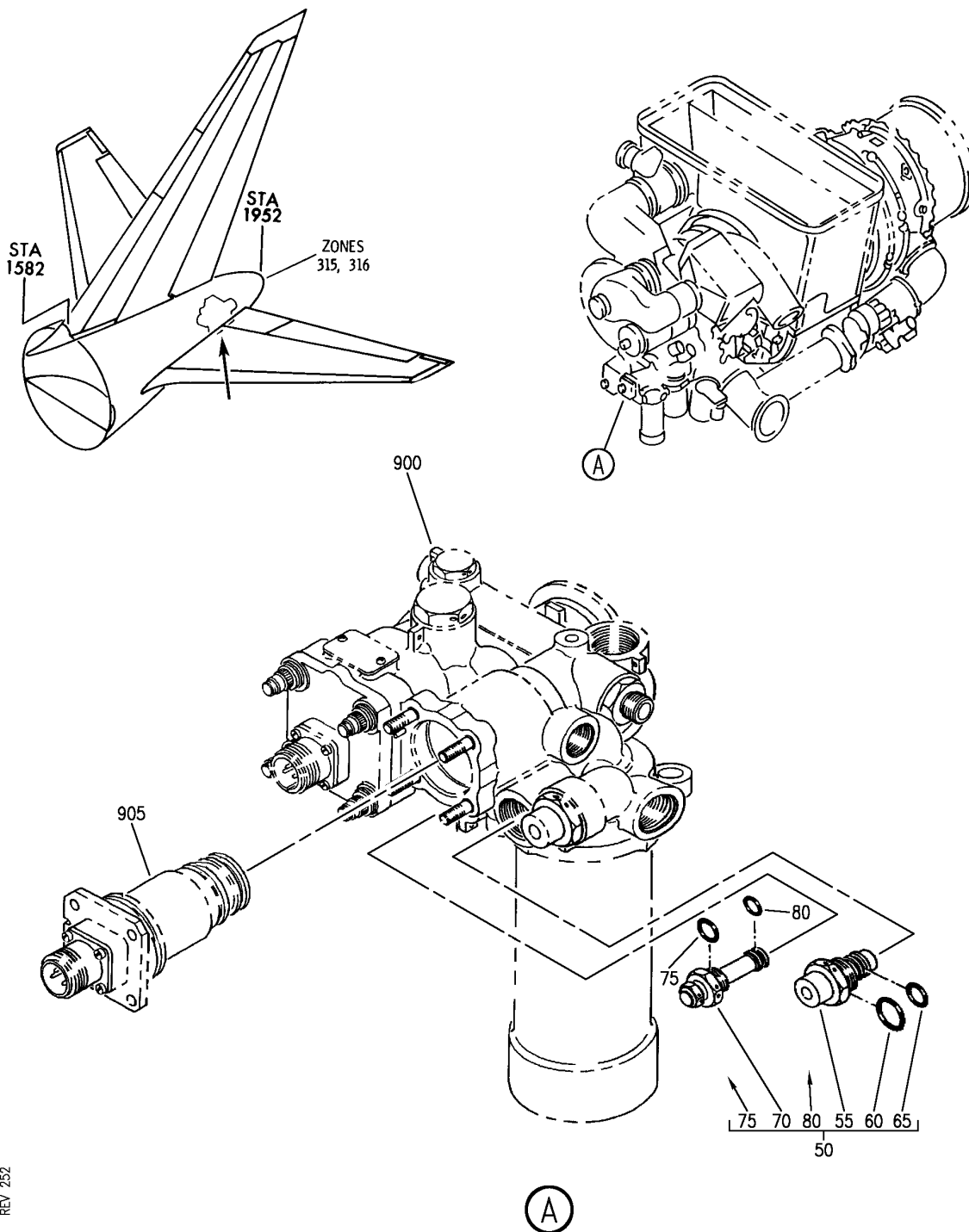
HXL

49-31-06-02

BOEING PROPRIETARY - Copyright © - Unpublished Work - See title page for details.

49-31-06
FIG. 02
PAGE 12
DEC 22/06

BOEING
767
PARTS CATALOG (MAINTENANCE)



V 49311001 REV 252

ENGINE ASSY-GAS TURB (APU FUEL FILTER DIFFERENTIAL PRESSURE INDICATOR ONLY)

FIGURE 1

49-31-10-01

HXL
DEC 22/06

49-31-10-01
PAGE 0



767

PARTS CATALOG (MAINTENANCE)

FIG ITEM	PART NUMBER	1 2 3 4 5 6 7 NOMENCLATURE	EFFECT FROM TO	UNITS PER ASSY
1 - 10	3800298-1-1	ENGINE ASSY-GAS TURB (APU FUEL FILTER DIFFERENTIAL PRESSURE INDICATOR ONLY) ENGINE ASSY-GAS TURB (APU FUEL FILTER DIFFERENTIAL PRESSURE INDICATOR ONLY) MODEL GTCP331-200ER SUPPLIER CODE: V99193 SPECIFICATION NUMBER: S351T020-200 COMPONENT MAINT MANUAL REF: 49-22-11 QUALIFIED I/W DATA: S351T020-200 (3800298-1-1) AND S351T020-205 (3800298-1-6) ARE INTERCHANGEABLE WITH THE INCORPORATION OF S/B 767-49-0025 S351T020-200 (3800298-1-1) AND S351T020-206 (3800298-1-7/3800298-1) ARE INTERCHANGEABLE WITH THE INCORPORATION OF ALLIED SIGNAL S/B GTCP331-49-7081 FOR NHA/OTHER SYS DET SEE: 49-11-00-01		RF
ILLUSTRATION ITEMS NOT ON PARTS LIST ARE NOT APPLICABLE				

- ITEM NOT ILLUSTRATED

HXL

49-31-10-01

BOEING PROPRIETARY - Copyright © - Unpublished Work - See title page for details.

49-31-10
FIG. 01
PAGE 1
DEC 22/06



767

PARTS CATALOG (MAINTENANCE)

FIG ITEM	PART NUMBER	1 2 3 4 5 6 7 NOMENCLATURE	EFFECT FROM TO	UNITS PER ASSY
1 - 10	3800298-1-2	ENGINE ASSY-GAS TURB (APU FUEL FILTER DIFFERENTIAL PRESSURE INDICATOR ONLY) MODEL GTCP331-200ER SUPPLIER CODE: V99193 SPECIFICATION NUMBER: S351T020-201 CONFIG CHG DATA FROM A CMM: REPLS 3800298-1-1 COMPONENT MAINT MANUAL REF: 49-22-11 QUALIFIED I/W DATA: S351T020-201 (3800298-1-2) AND S351T020-205 (3800298-1-6) ARE INTERCHANGEABLE WITH THE INCORPORATION OF S/B 767-49-0025 S351T020-201 (3800298-1-2) AND S351T020-206 (3800298-1-7/3800298-1) ARE INTERCHANGEABLE WITH THE INCORPORATION OF ALLIED SIGNAL S/B GTCP331-49-7081 FOR NHA/OTHER SYS DET SEE: 49-11-00-01		RF

ILLUSTRATION ITEMS NOT ON PARTS LIST ARE NOT APPLICABLE

- ITEM NOT ILLUSTRATED

HXL

49-31-10-01

BOEING PROPRIETARY - Copyright © - Unpublished Work - See title page for details.

49-31-10
 FIG. 01
 PAGE 2
 DEC 22/06



767

PARTS CATALOG (MAINTENANCE)

FIG ITEM	PART NUMBER	1 2 3 4 5 6 7 NOMENCLATURE	EFFECT FROM TO	UNITS PER ASSY
1 - 10	3800298-1-3	ENGINE ASSY-GAS TURB (APU FUEL FILTER DIFFERENTIAL PRESSURE INDICATOR ONLY) MODEL GTCP331-200ER SUPPLIER CODE: V99193 SPECIFICATION NUMBER: S351T020-202 CONFIG CHG DATA FROM A CMM: REPLS 3800298-1-2 COMPONENT MAINT MANUAL REF: 49-22-11 QUALIFIED I/W DATA: S351T020-202 (3800298-1-3) AND S351T020-205 (3800298-1-6) ARE INTERCHANGEABLE WITH THE INCORPORATION OF S/B 767-49-0025 S351T020-202 (3800298-1-3) AND S351T020-206 (3800298-1-7/3800298-1) ARE INTERCHANGEABLE WITH THE INCORPORATION OF ALLIED SIGNAL S/B GTCP331-49-7081 FOR NHA/OTHER SYS DET SEE: 49-11-00-01		RF

ILLUSTRATION ITEMS NOT ON PARTS LIST ARE NOT APPLICABLE

- ITEM NOT ILLUSTRATED

HXL

49-31-10-01

BOEING PROPRIETARY - Copyright © - Unpublished Work - See title page for details.

49-31-10
 FIG. 01
 PAGE 3
 DEC 22/06



767

PARTS CATALOG (MAINTENANCE)

FIG ITEM	PART NUMBER	1 2 3 4 5 6 7 NOMENCLATURE	EFFECT FROM TO	UNITS PER ASSY
1 - 10	3800298-1-4	ENGINE ASSY-GAS TURB (APU FUEL FILTER DIFFERENTIAL PRESSURE INDICATOR ONLY) MODEL GTCP331-200ER SUPPLIER CODE: V99193 SPECIFICATION NUMBER: S351T020-203 CONFIG CHG DATA FROM A CMM: REPLS 3800298-1-3 COMPONENT MAINT MANUAL REF: 49-22-11 QUALIFIED I/W DATA: S351T020-203 (3800298-1-4) AND S351T020-205 (3800298-1-6) ARE INTERCHANGEABLE WITH THE INCORPORATION OF S/B 767-49-0025 S351T020-203 (3800298-1-4) AND S351T020-206 (3800298-1-7/3800298-1) ARE INTERCHANGEABLE WITH THE INCORPORATION OF ALLIED SIGNAL S/B GTCP331-49-7081 FOR NHA/OTHER SYS DET SEE: 49-11-00-01		RF

ILLUSTRATION ITEMS NOT ON PARTS LIST ARE NOT APPLICABLE

- ITEM NOT ILLUSTRATED

HXL

49-31-10-01

BOEING PROPRIETARY - Copyright © - Unpublished Work - See title page for details.

49-31-10
 FIG. 01
 PAGE 4
 DEC 22/06



767

PARTS CATALOG (MAINTENANCE)

FIG ITEM	PART NUMBER	1 2 3 4 5 6 7	NOMENCLATURE	EFFECT FROM TO	UNITS PER ASSY
1 - 10	3800298-1-5		ENGINE ASSY-GAS TURB (APU FUEL FILTER DIFFERENTIAL PRESSURE INDICATOR ONLY) MODEL GTCP331-200ER SUPPLIER CODE: V99193 SPECIFICATION NUMBER: S351T020-204 CONFIG CHG DATA FROM A CMM: REPLS 3800298-1-4 COMPONENT MAINT MANUAL REF: 49-22-11 QUALIFIED I/W DATA: S351T020-204 (3800298-1-5) AND S351T020-206 (3800298-1-7/3800298-1) ARE INTERCHANGEABLE WITH THE INCORPORATION OF ALLIED SIGNAL S/B GTCP331-49-7081 S351T020-204 (3800298-1-5) AND S351T020-205 (3800298-1-6) ARE INTERCHANGEABLE WITH THE INCORPORATION OF S/B 767-49-0025 FOR NHA/OTHER SYS DET SEE: 49-11-00-01		RF
- 10	3800298-1-6		ENGINE ASSY-GAS TURB (APU FUEL FILTER DIFFERENTIAL PRESSURE INDICATOR ONLY) MODEL GTCP331-200ER SUPPLIER CODE: V99193 SPECIFICATION NUMBER: S351T020-205 CONFIG CHG DATA FROM A CMM: REPLS 3800298-1-5 COMPONENT MAINT MANUAL REF: 49-22-11 QUALIFIED I/W DATA: S351T020-204 (3800298-1-5) AND S351T020-205 (3800298-1-6) ARE		RF

ILLUSTRATION ITEMS NOT ON PARTS LIST ARE NOT APPLICABLE

- ITEM NOT ILLUSTRATED

49-31-10-01

49-31-10
FIG. 01
PAGE 5
DEC 22/06

HXL



767

PARTS CATALOG (MAINTENANCE)

FIG ITEM	PART NUMBER	1 2 3 4 5 6 7 NOMENCLATURE	EFFECT FROM TO	UNITS PER ASSY
1 10		INTERCHANGEABLE WITH THE INCORPORATION OF S/B 767-49-0025 S351T020-203 (3800298-1-4) AND S351T020-205 (3800298-1-6) ARE INTERCHANGEABLE WITH INCORPORATION OF S/B 767-49-0025 S351T020-202 (3800298-1-3) AND S351T020-205 (3800298-1-6) ARE INTERCHANGEABLE WITH THE INCORPORATION OF S/B 767-49-0025 S351T020-201 (3800298-1-2) AND S351T020-205 (3800298-1-6) ARE INTERCHANGEABLE WITH THE INCORPORATION OF S/B 767-49-0025 S351T020-200 (3800298-1-1) AND S351T020-205 (3800298-1-6) ARE INTERCHANGEABLE WITH THE INCORPORATION OF S/B 767-49-0025 FOR NHA/OTHER SYS DET SEE: 49-11-00-01		
- 15	3800298-1-7	ENGINE ASSY-GAS TURB (APU FUEL FILTER DIFFERENTIAL PRESSURE INDICATOR ONLY) MODEL GTCP331-200ER SUPPLIER CODE: V99193 SPECIFICATION NUMBER: S351T020-206 CONFIG CHG DATA FROM A CMM: REPLS 3800298-1-6 ELECTRICAL EQUIP NUMBER: M00967 COMPONENT MAINT MANUAL REF: 49-22-11 QUALIFIED I/W DATA: ILLUSTRATION ITEMS NOT ON PARTS LIST ARE NOT APPLICABLE		RF

- ITEM NOT ILLUSTRATED

49-31-10-01

49-31-10
 FIG. 01
 PAGE 6
 DEC 22/06

HXL



767

PARTS CATALOG (MAINTENANCE)

FIG ITEM	PART NUMBER	1 2 3 4 5 6 7	NOMENCLATURE	EFFECT FROM TO	UNITS PER ASSY
1 15			<p>S351T020-203 (3800298-1-4) AND S351T020-206 (3800298-1-7/3800298-1) ARE INTERCHANGEABLE WITH THE INCORPORATION OF ALLIED SIGNAL S/B GTCP331-49-7081. S351T020-204 (3800298-1-5) AND S351T020-206 (3800298-1-7/3800298-1) ARE INTERCHANGEABLE WITH THE INCORPORATION OF ALLIED SIGNAL S/B GTCP331-49-7081. S351T020-202 (3800298-1-3) AND S351T020-206 (3800298-1-7/3800298-1) ARE INTERCHANGEABLE WITH THE INCORPORATION OF ALLIED SIGNAL S/B GTCP331-49-7081 S351T020-201 (3800298-1-2) AND S351T020-206 (3800298-1-7/3800298-1) ARE INTERCHANGEABLE WITH THE INCORPORATION OF ALLIED SIGNAL S/B GTCP331-49-7081 S351T020-200 (3800298-1-1) AND S351T020-206 (3800298-1-7/3800298-1) ARE INTERCHANGEABLE WITH THE INCORPORATION OF ALLIED SIGNAL S/B GTCP331-49-7081 OPTIONAL PART: 3800298-1 V99193 FOR NHA/OTHER SYS DET SEE: 49-11-00-01 ENGINE ASSY-GAS TURB (APU FUEL FILTER DIFFERENTIAL PRESSURE INDICATOR ONLY)</p>		
- 15	3800298-1		<p>ILLUSTRATION ITEMS NOT ON PARTS LIST ARE NOT APPLICABLE</p>		RF

- ITEM NOT ILLUSTRATED

49-31-10-01

49-31-10
 FIG. 01
 PAGE 7
 DEC 22/06

HXL



767

PARTS CATALOG (MAINTENANCE)

FIG ITEM	PART NUMBER	1 2 3 4 5 6 7 NOMENCLATURE	EFFECT FROM TO	UNITS PER ASSY
1		<p>SUPPLIER CODE: V99193</p> <p>SPECIFICATION NUMBER: S351T020-206</p> <p>COMPONENT MAINT MANUAL REF: 49-22-11</p> <p>QUALIFIED I/W DATA: S351T020-204 (3800298-1-5) AND S351T020-206 (3800298-1-7/3800298-1) ARE INTERCHANGEABLE WITH THE INCORPORATION OF ALLIED SIGNAL S/B GTCP331-49-7081 S351T020-203 (3800298-1-4) AND S351T020-206 (3800298-1-7/3800298-1) ARE INTERCHANGEABLE WITH THE INCORPORATION OF ALLIED SIGNAL S/B GTCP331-49-7081. S351T020-202 (3800298-1-3) AND S351T020-206 (3800298-1-7/3800298-1) ARE INTERCHANGEABLE WITH THE INCORPORATION OF ALLIED SIGNAL S/B GTCP331-49-7081 S351T020-201 (3800298-1-2) AND S351T020-206 (3800298-1-7/3800298-1) ARE INTERCHANGEABLE WITH THE INCORPORATION OF ALLIED SIGNAL S/B GTCP331-49-7081 S351T020-200 (3800298-1-1) AND S351T020-206 (3800298-1-7/3800298-1) ARE INTERCHANGEABLE WITH THE INCORPORATION OF ALLIED SIGNAL S/B GTCP331-49-7081</p> <p>OPTIONAL PART: 3800298-1-7</p> <p>ILLUSTRATION ITEMS NOT ON PARTS LIST ARE NOT APPLICABLE</p>		

- ITEM NOT ILLUSTRATED

49-31-10-01

49-31-10
FIG. 01
PAGE 8
DEC 22/06

HXL



767

PARTS CATALOG (MAINTENANCE)

FIG ITEM	PART NUMBER	1 2 3 4 5 6 7	NOMENCLATURE	EFFECT FROM TO	UNITS PER ASSY
1					
15			V99193 FOR NHA/OTHER SYS DET SEE: 49-11-00-01		
50	3882500-9		. FUEL CONTROL ASSY- SUPPLIER CODE: V99193 NOT APPROVED FOR ETOPS AFTER INCORP OF SB: GTCP331-49-5888 V99193 GTCP331-49-5895 V99193 SB DATA FROM A CMM: PRE SB 49-5639 PRE SB 49-5640 COMPONENT MAINT MANUAL REF: 49-31-61 USED ON: 3800298-1-1 3800298-1-2 3800298-1-3 3800298-1-4 3800298-1-5 3800298-1-6		RF
50	3882500-10		. FUEL CONTROL ASSY- SUPPLIER CODE: V99193 NOT APPROVED FOR ETOPS AFTER INCORP OF SB: GTCP331-49-5888 V99193 GTCP331-49-5895 V99193 SB DATA FROM A CMM: POST SB 49-5569 POST SB 49-5570 PRE SB 49-5672 CONFIG CHG DATA FROM A CMM: REPLS 3882500-11 REPLD BY 3882500-12 COMPONENT MAINT MANUAL REF: 49-31-61		RF

ILLUSTRATION ITEMS NOT ON PARTS LIST ARE NOT APPLICABLE

- ITEM NOT ILLUSTRATED

HXL

49-31-10-01

BOEING PROPRIETARY - Copyright © - Unpublished Work - See title page for details.

49-31-10
FIG. 01
PAGE 9
DEC 22/06



767

PARTS CATALOG (MAINTENANCE)

FIG ITEM	PART NUMBER	1 2 3 4 5 6 7	NOMENCLATURE	EFFECT FROM TO	UNITS PER ASSY
1	50 3882500-11		. FUEL CONTROL ASSY- SUPPLIER CODE: V99193 NOT APPROVED FOR ETOPS. SB DATA FROM A CMM: POST SB 49-5639 PRE SB 49-5569 PRE SB 49-5570 PRE SB 49-5672 CONFIG CHG DATA FROM A CMM: REPLD BY 3882500-10 REPLD BY 3882500-13 MISCELLANEOUS DATA: (USE ON 767 ER A/C) REWORKED FROM 3882500-6 AND 3882500-7 PER SB49-5640 REWORKED FROM 3882500-8 REWORKED FROM 3882500-9 COMPONENT MAINT MANUAL REF: 49-31-61		RF
	50 3882500-12		. FUEL CONTROL ASSY- SUPPLIER CODE: V99193 NOT APPROVED FOR ETOPS AFTER INCORP OF SB: 49-5888 V99193 49-5895 V99193 SB DATA FROM A CMM: POST SB 49-5688 POST SB 49-5672 POST SB 49-5570 PRE SB 49-5888 PRE SB 49-5895 CONFIG CHG DATA FROM A CMM: REPLS 3882500-10 REPLD BY 3882500-14 MISCELLANEOUS DATA: REWORKED FROM 3800550-10 3800550-11 AND 3800550-13 PER SB49-5570 COMPONENT MAINT MANUAL REF: 49-31-61		RF

ILLUSTRATION ITEMS NOT ON PARTS LIST ARE NOT APPLICABLE

- ITEM NOT ILLUSTRATED

49-31-10-01

HXL

BOEING PROPRIETARY - Copyright © - Unpublished Work - See title page for details.

49-31-10
FIG. 01
PAGE 10
DEC 22/06



767

PARTS CATALOG (MAINTENANCE)

FIG ITEM	PART NUMBER	1 2 3 4 5 6 7	NOMENCLATURE	EFFECT FROM TO	UNITS PER ASSY
1 50	3882500-13		. FUEL CONTROL ASSY- SUPPLIER CODE: V99193 NOT APPROVED FOR ETOPS. SB DATA FROM A CMM: POST SB 49-5688 POST SB 49-5672 PRE SB 49-5888 PRE SB 49-5895 CONFIG CHG DATA FROM A CMM: REPLS 3882500-11 REPLD BY 3882500-15 MISCELLANEOUS DATA: REWORKED FROM 3882500-11 COMPONENT MAINT MANUAL REF: 49-31-61		RF
50	3882500-14		. FUEL CONTROL ASSY- SUPPLIER CODE: V99193 SB DATA FROM A CMM: POST SB 49-5888 POST SB 49-5895 PRE SB 49-6674 PRE SB 49-6778 PRE SB 49-7157 CONFIG CHG DATA FROM A CMM: REPLS 3882500-12 REPLD BY 3882500-16 REPLD BY 3882500-17 MISCELLANEOUS DATA: REWORKED FROM 3882500-12 3882500-13 AND 3882500-15 PER SB 49-48-9 COMPONENT MAINT MANUAL REF: 49-31-61		RF
50	3882500-15		. FUEL CONTROL ASSY- SUPPLIER CODE: V99193 NOT APPROVED FOR ETOPS. SB DATA FROM A CMM: POST SB 49-5888 POST SB 49-5895 CONFIG CHG DATA FROM A CMM: REPLS 3882500-13 MISCELLANEOUS DATA: REWORKED FROM 3882500-13 COMPONENT MAINT MANUAL REF: 49-31-61		RF

ILLUSTRATION ITEMS NOT ON PARTS LIST ARE NOT APPLICABLE

- ITEM NOT ILLUSTRATED

49-31-10-01

49-31-10
FIG. 01
PAGE 11
DEC 22/06

HXL



767

PARTS CATALOG (MAINTENANCE)

FIG ITEM	PART NUMBER	1 2 3 4 5 6 7	NOMENCLATURE	EFFECT FROM TO	UNITS PER ASSY
1					
50	3882500-16		. FUEL CONTROL ASSY- SUPPLIER CODE: V99193 SB DATA FROM A CMM: POST SB 49-6778 POST SB 49-6674 CONFIG CHG DATA FROM A CMM: REPLS 3882500-14 REPLD BY 3882500-17 MISCELLANEOUS DATA: REWORKED FROM 3882500-14 COMPONENT MAINT MANUAL REF: 49-31-61		RF
50	3882500-17		. FUEL CONTROL ASSY- SUPPLIER CODE: V99193 SB DATA FROM A CMM: POST SB 49-7157 POST SB 49-7156 CONFIG CHG DATA FROM A CMM: REPLS 3882500-14 REPLS 3882500-16 COMPONENT MAINT MANUAL REF: 49-31-61		RF
55	3882488-1		.. INDICATOR- SUPPLIER CODE: V99193		1
60	S9412-558		.. PACKING- SUPPLIER CODE: V99193 OPTIONAL PART: M25988-2-908		1
60	M25988-2-908		.. PACKING- OPTIONAL PART: S9412-558 V99193		1
65	S9412-014		.. PACKING- SUPPLIER CODE: V99193 OPTIONAL PART: M25988-2-014		1
65	M25988-2-014		.. PACKING- OPTIONAL PART: S9412-014 V99193		2

ILLUSTRATION ITEMS NOT ON PARTS LIST ARE NOT APPLICABLE

- ITEM NOT ILLUSTRATED

49-31-10-01

49-31-10
FIG. 01
PAGE 12
DEC 22/06

HXL

 **BOEING**
767
PARTS CATALOG (MAINTENANCE)

FIG ITEM	PART NUMBER	1 2 3 4 5 6 7	NOMENCLATURE	EFFECT FROM TO	UNITS PER ASSY
1					
70	3882482-1		.. VALVE-RELIEF SUPPLIER CODE: V99193 SB DATA FROM A CMM: PRE SB 49-5640 CONFIG CHG DATA FROM A CMM: SUSPSD BY 3882482-2		1
70	3882482-2		.. VALVE-RELIEF SUPPLIER CODE: V99193 SB DATA FROM A CMM: POST SB 49-5640 CONFIG CHG DATA FROM A CMM: SUPERSEDES 3882482-1		1
75	S9412-556		.. PACKING- SUPPLIER CODE: V99193 OPTIONAL PART: M25988-2-906		1
75	M25988-2-906		.. PACKING- OPTIONAL PART: S9412-556 V99193		1
80	S9412-011		.. PACKING- SUPPLIER CODE: V99193 OPTIONAL PART: M25988-2-011		1
80	M25988-2-011		.. PACKING- OPTIONAL PART: S9412-011 V99193		1
900			ILLUSTRATION REFERENCE: ENGINE-GAS TURB (APU ENGINE FUEL SYSTEM ONLY) 49-31-00-01		RF
905			ILLUSTRATION REFERENCE: ENGINE ASSY-GAS TURB (APU FUEL CONTROL SOLENOID VALVE ONLY) 49-31-02-01		RF
ILLUSTRATION ITEMS NOT ON PARTS LIST ARE NOT APPLICABLE					

- ITEM NOT ILLUSTRATED

HXL

49-31-10-01

BOEING PROPRIETARY - Copyright © - Unpublished Work - See title page for details.

49-31-10
FIG. 01
PAGE 13
DEC 22/06