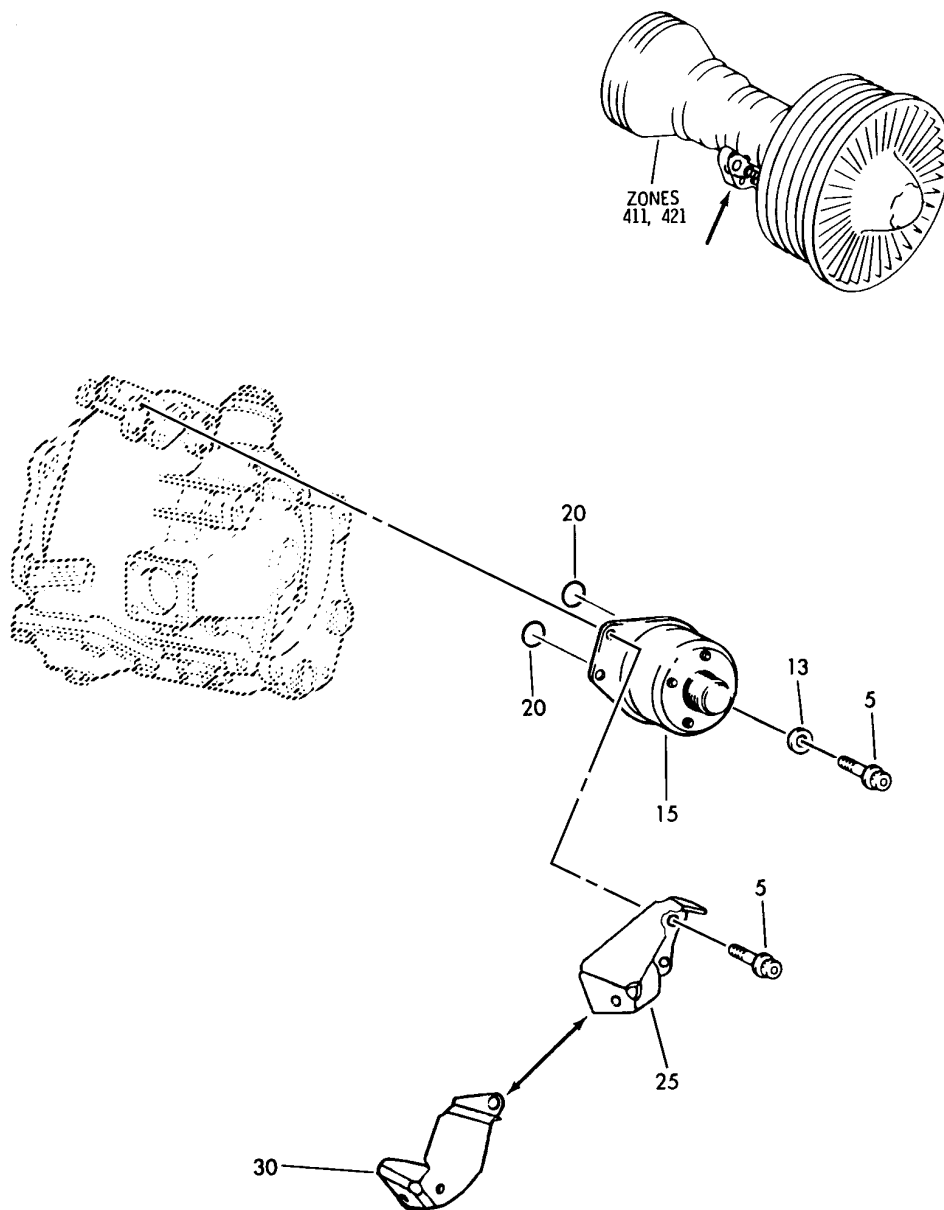


## FUEL FILTER BYPASS WARNING SYSTEM

HXL  
DEC 22/06

73-34-00  
SECTION TITLE  
PAGE 1

**BOEING**  
767  
PARTS CATALOG (MAINTENANCE)



V 73340110 REV 231

SWITCH-FUEL PUMP FILTER DIFF PRESSURE (PW4000)  
FIGURE 10

**73-34-01-10**

HXL  
DEC 22/06

73-34-01-10  
PAGE 0



767

PARTS CATALOG (MAINTENANCE)

FIG ITEM	PART NUMBER	1 2 3 4 5 6 7	NOMENCLATURE	EFFECT FROM TO	UNITS PER ASSY
10			SWITCH-FUEL PUMP FILTER DIFF PRESSURE (PW4000)		
- 1	PW4060		ENGINE- SUPPLIER CODE: V77445 CONFIG CHG DATA FROM A CMM: SEE 71-00-51 FIG. 2 FOR APPLICABLE ENGINE SERIES		RF
5	MS9209-07		.BOLT		4
- 10	MS9320-10		.WASHER- CONFIG CHG DATA FROM A CMM: FOR INTRCHG SEE PW IPC PRE SERVICE BULLETIN: 73-84 V77445		4
13	MS9320-10		.WASHER- CONFIG CHG DATA FROM A CMM: FOR INTRCHG SEE PW IPC POST SERVICE BULLETIN: 73-84 V77445		2
15	42D362		.SWITCH-DIFF PRESSURE SUPPLIER CODE: V09049 NOT APPROVED FOR ETOPS. CONFIG CHG DATA FROM A CMM: PRATT AND WHITNEY PART NO. 1B1384 MISCELLANEOUS DATA: ETOPS NOTE APPLIES TO S/N PRIOR TO SY4670 OPTIONAL PART: 42D394 V09049 42D395 V09049 PRE SERVICE BULLETIN: 73-172 V77445 73-173 V77445 REFERENCE SERVICE BULLETIN: 73-36 V77445 REFERENCE AIRLINE MOD: 73-36 VTWA		1

ILLUSTRATION ITEMS NOT ON PARTS LIST ARE NOT APPLICABLE

- ITEM NOT ILLUSTRATED

HXL

73-34-01-10

BOEING PROPRIETARY - Copyright © - Unpublished Work - See title page for details.

73-34-01  
FIG. 10  
PAGE 1  
DEC 22/06



767

PARTS CATALOG (MAINTENANCE)

FIG ITEM	PART NUMBER	1 2 3 4 5 6 7	NOMENCLATURE	EFFECT FROM TO	UNITS PER ASSY
10 15	42D394		.SWITCH-DIFF PRESSURE SUPPLIER CODE: V09049 CONFIG CHG DATA FROM A CMM: PRATT AND WHITNEY PART NO. 1B7405 OPTIONAL PART: 42D362 V09049 42D395 V09049 POST SERVICE BULLETIN: 73-172 V77445 PRE SERVICE BULLETIN: 73-173 V77445		1
15	42D395		.SWITCH-DIFF PRESSURE SUPPLIER CODE: V09049 CONFIG CHG DATA FROM A CMM: PRATT AND WHITNEY PART NO. 51U711 OPTIONAL PART: 42D362 V09049 42D394 V09049 POST SERVICE BULLETIN: 73-173 V77445		1
20	MS9967-010		.PACKING		2
25	53T558-01		.BRACKET ASSY- SUPPLIER CODE: V77445 CONFIG CHG DATA FROM A CMM: FOR INTRCHG SEE PW IPC POST SERVICE BULLETIN: 73-84 V77445 PRE SERVICE BULLETIN: 73-156 V77445 73-161 V77445		1

ILLUSTRATION ITEMS NOT ON PARTS LIST ARE NOT APPLICABLE

- ITEM NOT ILLUSTRATED

73-34-01-10

73-34-01  
FIG. 10  
PAGE 2  
DEC 22/06

HXL



767

PARTS CATALOG (MAINTENANCE)

FIG ITEM	PART NUMBER	1 2 3 4 5 6 7	NOMENCLATURE	EFFECT FROM TO	UNITS PER ASSY
10 30	56T814-01		.BRACKET ASSY- SUPPLIER CODE: V77445 CONFIG CHG DATA FROM A CMM: FOR INTRCHG SEE PW IPC POST SERVICE BULLETIN: 73-156 V77445 73-161 V77445		1
30	51U580-01		.BRACKET ASSY- SUPPLIER CODE: V77445 CONFIG CHG DATA FROM A CMM: FOR INTRCHG SEE PW IPC		1

ILLUSTRATION ITEMS NOT ON PARTS LIST ARE NOT APPLICABLE

- ITEM NOT ILLUSTRATED

HXL

73-34-01-10

BOEING PROPRIETARY - Copyright © - Unpublished Work - See title page for details.

73-34-01  
FIG. 10  
PAGE 3  
DEC 22/06