

CHAPTER

49

AIRBORNE AUXILIARY POWER



CHAPTER 49
AIRBORNE AUXILIARY POWER

CH-SC-SU	Schem	Page	Sheet	Date	CH-SC-SU	Schem	Page	Sheet	Date
49-EFFECTIVE PAGES		1		Aug 05/2009	49-00-04 (cont.)		103		
		2		BLANK				2	Jan 21/2005
49-CONTENTS							104	1	Jan 21/2005
		1		Jun 06/2008				2	Jun 06/2008
		2		BLANK	49-00-05				
49-ALPHABETICAL INDEX							101		Jan 21/2005
		1		Jun 28/2006	49-00-06				
		2		BLANK			101		Jan 21/2005
49-00-00					49-00-07				
		101		Jan 21/2005			101		Jan 21/2005
49-00-01									
		101	1	Jan 21/2005					
			2	Jan 21/2005					
49-00-02									
		101		Jan 21/2005					
49-00-03									
		101	1	Jan 21/2005					
			2	Jan 21/2005					
49-00-04									
		101	1	Jan 21/2005					
			2	Jan 21/2005					
		102	1	Jan 21/2005					
			2	Jan 21/2005					
		103	1	Jan 21/2005					

A = Added, R = Revised, D = Deleted, O = Overflow

49-EFFECTIVE PAGES

Page 1
Aug 05/2009

D280T232



CHAPTER 49
AIRBORNE AUXILIARY POWER

Title	CH-SC-SU	Schem	Page	Sheet	Date	Effectivity
<u>AIRBORNE AUXILIARY POWER</u>						
AUXILIARY POWER UNIT SIMPLIFIED	49-00-00		101		Jan 21/2005	ALL
AUXILIARY POWER UNIT ENGINE	49-00-01		101	1	Jan 21/2005	ALL
				2	Jan 21/2005	ALL
AUXILIARY POWER UNIT OIL	49-00-02		101		Jan 21/2005	ALL
AUXILIARY POWER UNIT FUEL	49-00-03		101	1	Jan 21/2005	ALL
				2	Jan 21/2005	ALL
AUXILIARY POWER UNIT IGNITION AND STARTING	49-00-04		101	1	Jan 21/2005	050-099
				2	Jan 21/2005	050-099
			102	1	Jan 21/2005	150-157
				2	Jan 21/2005	150-157
			103	1	Jan 21/2005	162-199
				2	Jan 21/2005	162-199
			104	1	Jan 21/2005	275-299
				2	Jun 06/2008	275-299
AUXILIARY POWER UNIT AIR	49-00-05		101		Jan 21/2005	ALL
AUXILIARY POWER UNIT CONTROL AND BITE	49-00-06		101		Jan 21/2005	ALL
AUXILIARY POWER UNIT DISCONNECTS	49-00-07		101		Jan 21/2005	ALL

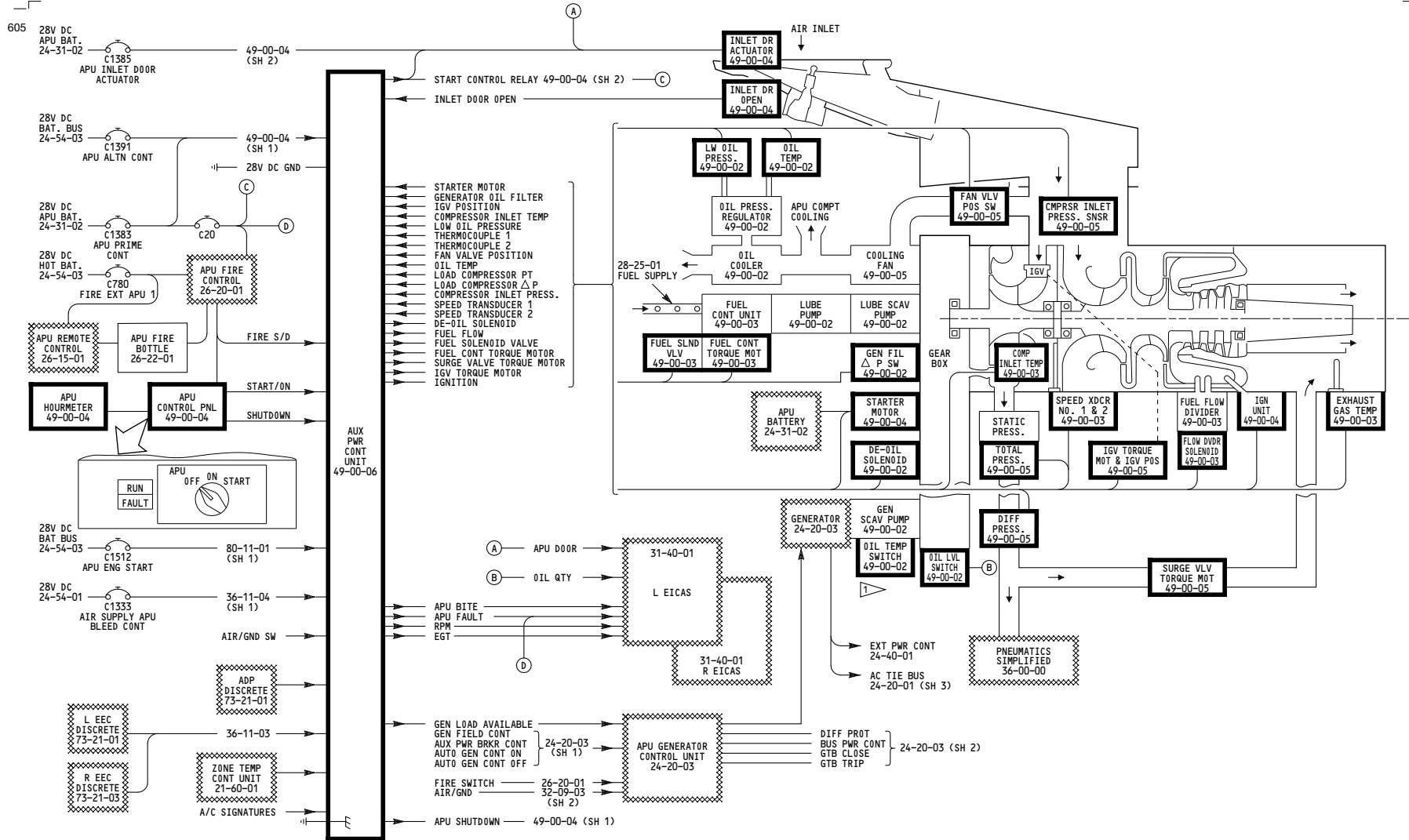


CHAPTER 49
AIRBORNE AUXILIARY POWER

CH-SC-SU	Title
49-00-05	AUXILIARY POWER UNIT AIR
49-00-06	AUXILIARY POWER UNIT CONTROL AND BITE
49-00-07	AUXILIARY POWER UNIT DISCONNECTS
49-00-01	AUXILIARY POWER UNIT ENGINE
49-00-03	AUXILIARY POWER UNIT FUEL
49-00-04	AUXILIARY POWER UNIT IGNITION AND STARTING
49-00-02	AUXILIARY POWER UNIT OIL
49-00-00	AUXILIARY POWER UNIT SIMPLIFIED

CH-SC-SU	Title
----------	-------

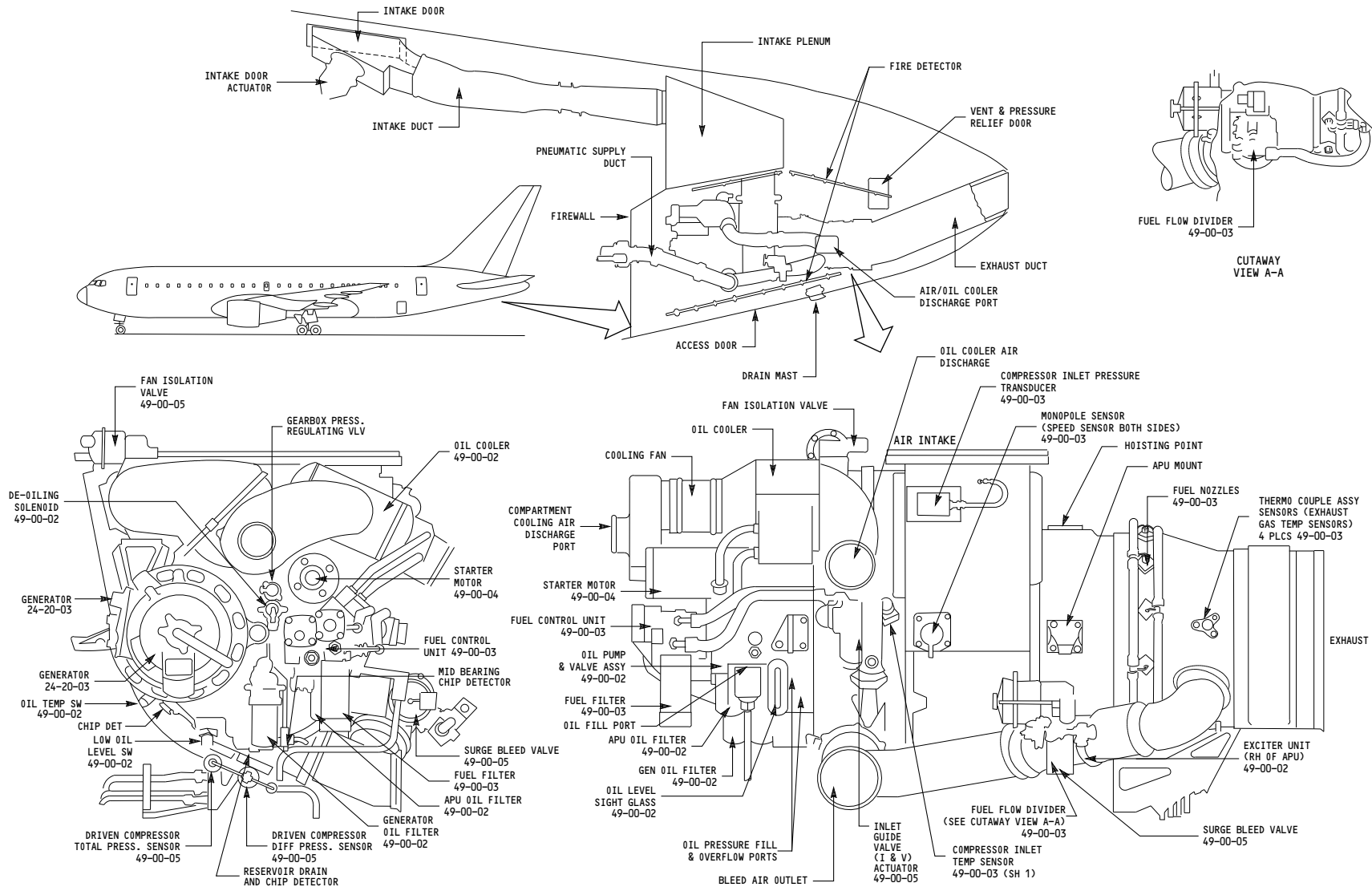
49-ALPHABETICAL INDEX



NOTES:
 1 SEE 49-00-02 FOR EFFECTIVITY

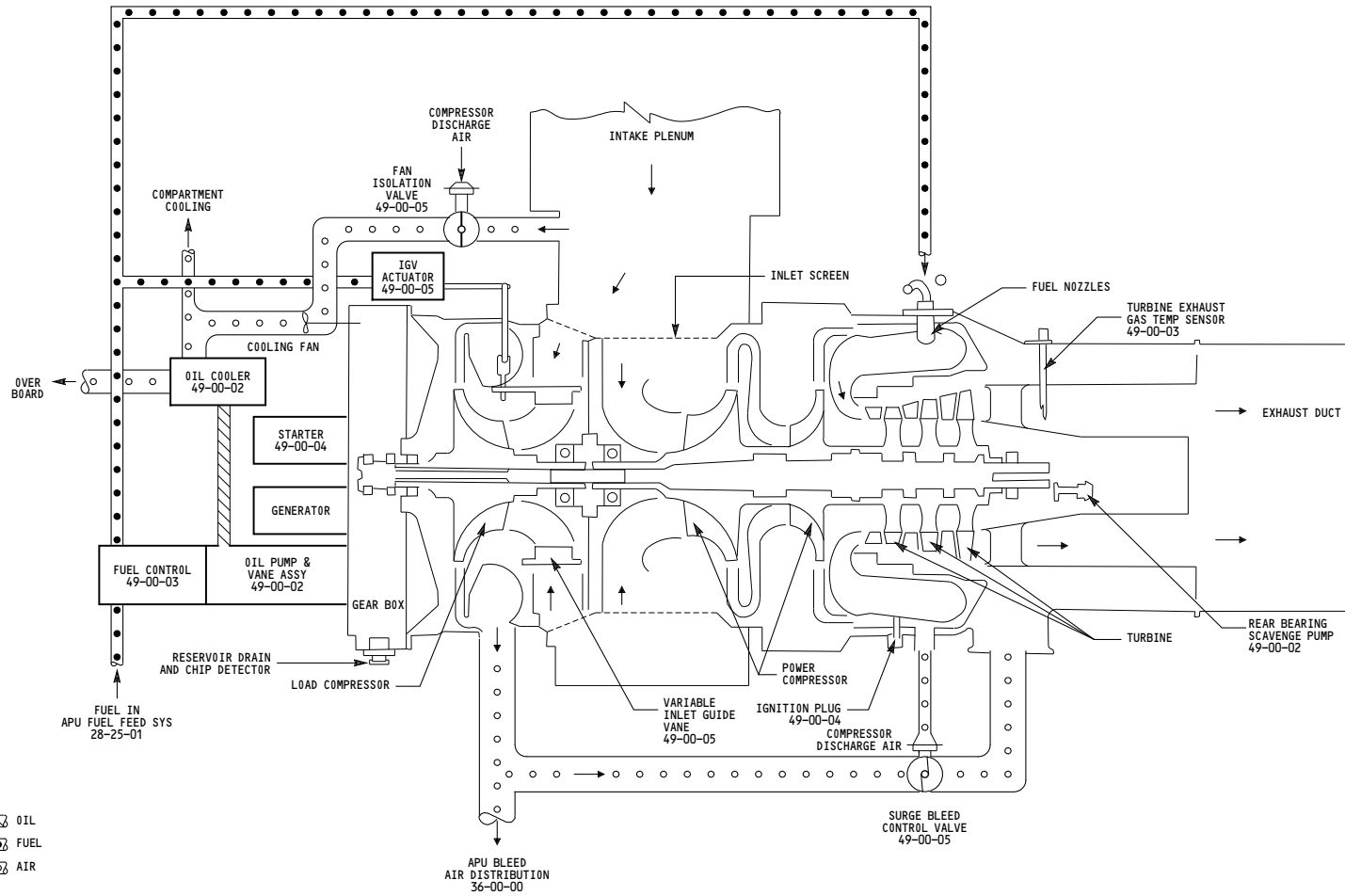
ALL	<p>AUXILIARY POWER UNIT SIMPLIFIED</p> <p>D280T232</p>
-----	---

49-00-00



ALL	<p align="center">AUXILIARY POWER UNIT ENGINE</p> <p align="center">D280T232</p>
-----	---

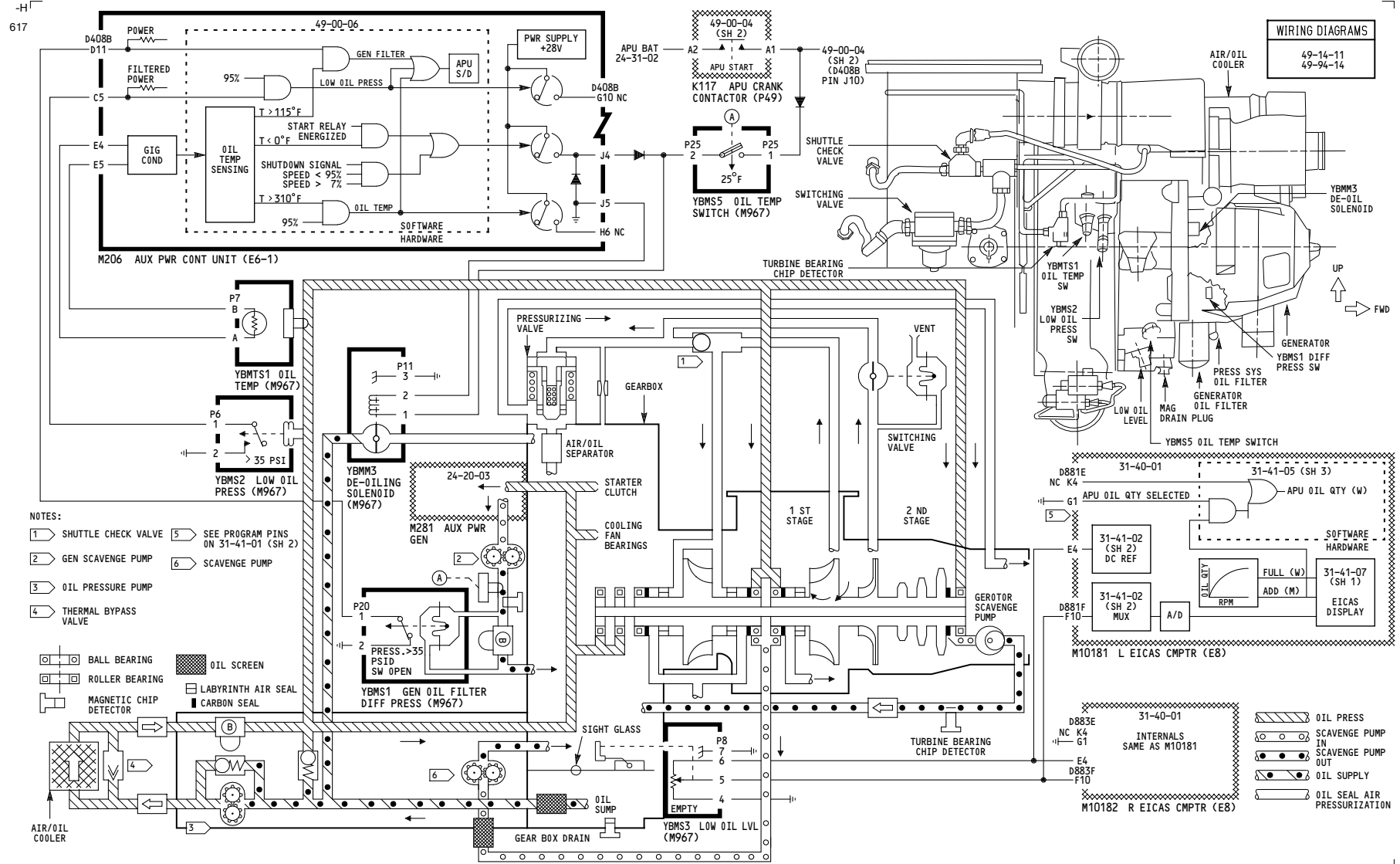
49-00-01



ALL	<p>AUXILIARY POWER UNIT ENGINE</p> <p>D280T232</p>
-----	---

49-00-01

Page 101
Sheet 2
Jan 21/2005



WIRING DIAGRAMS
49-14-11
49-94-14

- NOTES:**
- 1 SHUTTLE CHECK VALVE
 - 2 GEN SCAVENGE PUMP
 - 3 OIL PRESSURE PUMP
 - 4 THERMAL BYPASS VALVE
 - 5 SEE PROGRAM PINS ON 31-41-01 (SH 2)
 - 6 SCAVENGE PUMP

- BALL BEARING
- ROLLER BEARING
- MAGNETIC CHIP DETECTOR
- OIL SCREEN
- LABYRINTH AIR SEAL
- CARBON SEAL

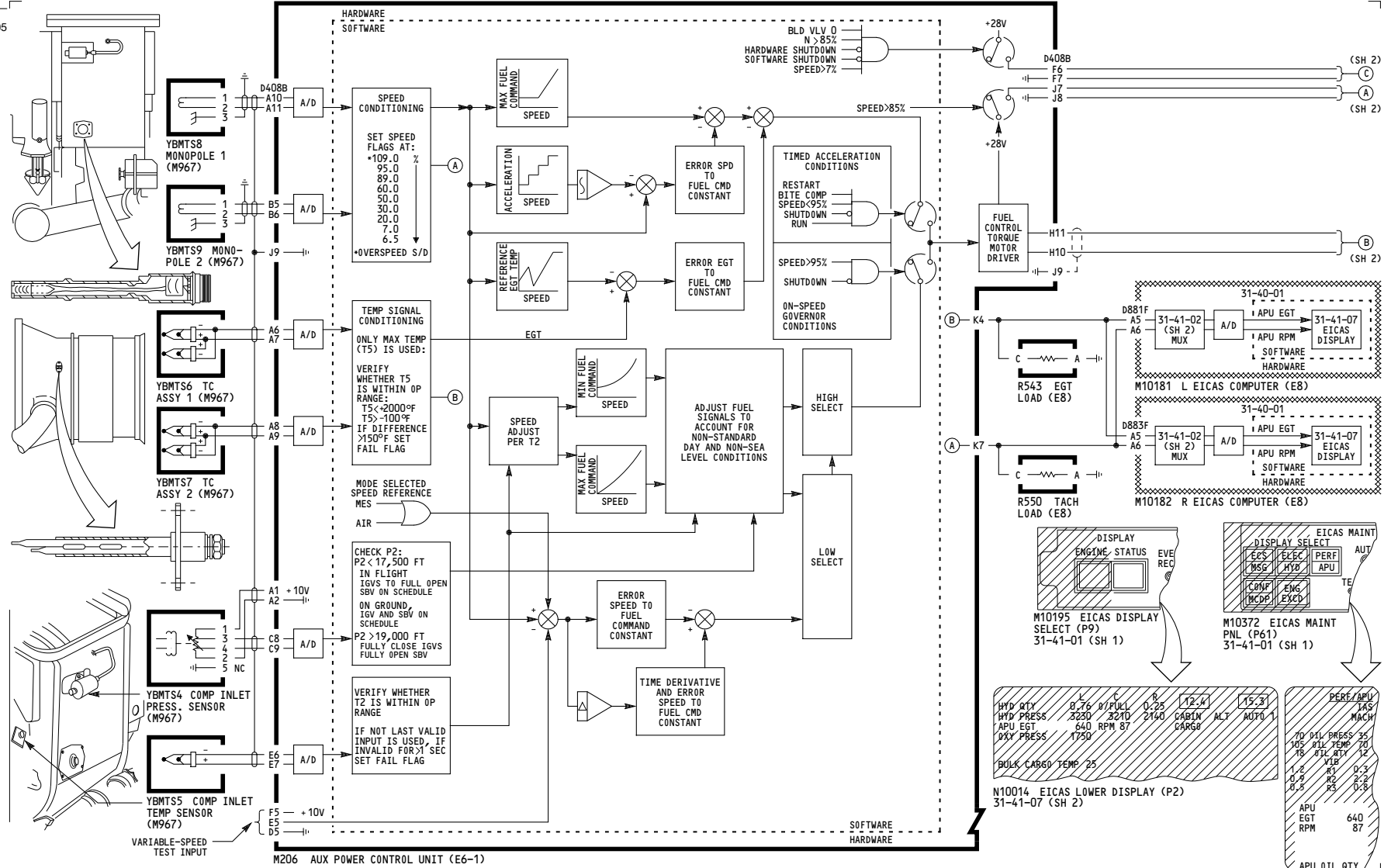
- OIL PRESS
- SCAVENGE PUMP IN
- SCAVENGE PUMP OUT
- OIL SUPPLY
- OIL SEAL AIR PRESSURIZATION

ALL	<p>AUXILIARY POWER UNIT OIL</p> <p>D280T232</p>
-----	--

49-00-02

THIS PAGE INTENTIONALLY LEFT BLANK

605



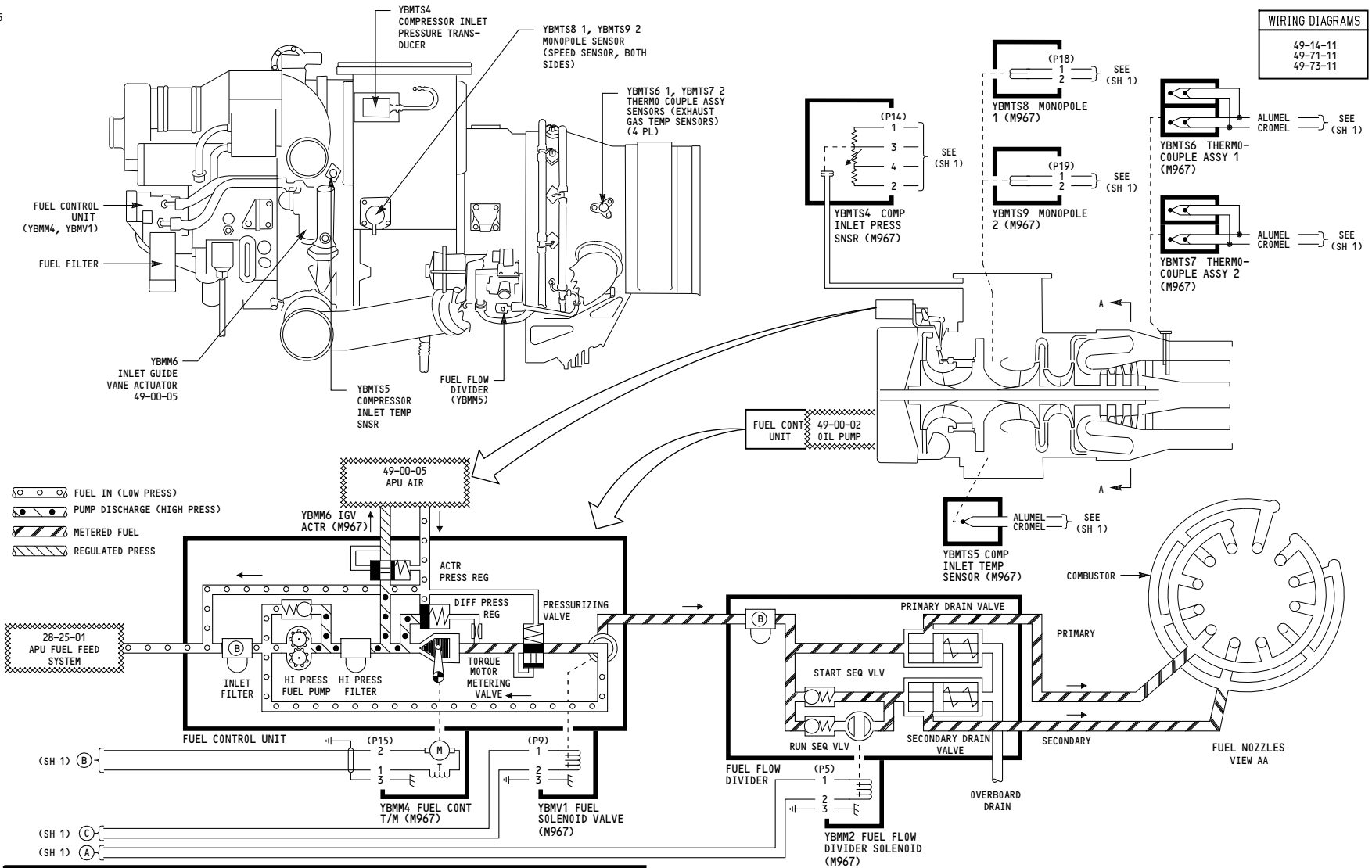
ALL

AUXILIARY POWER UNIT FUEL

D280T232

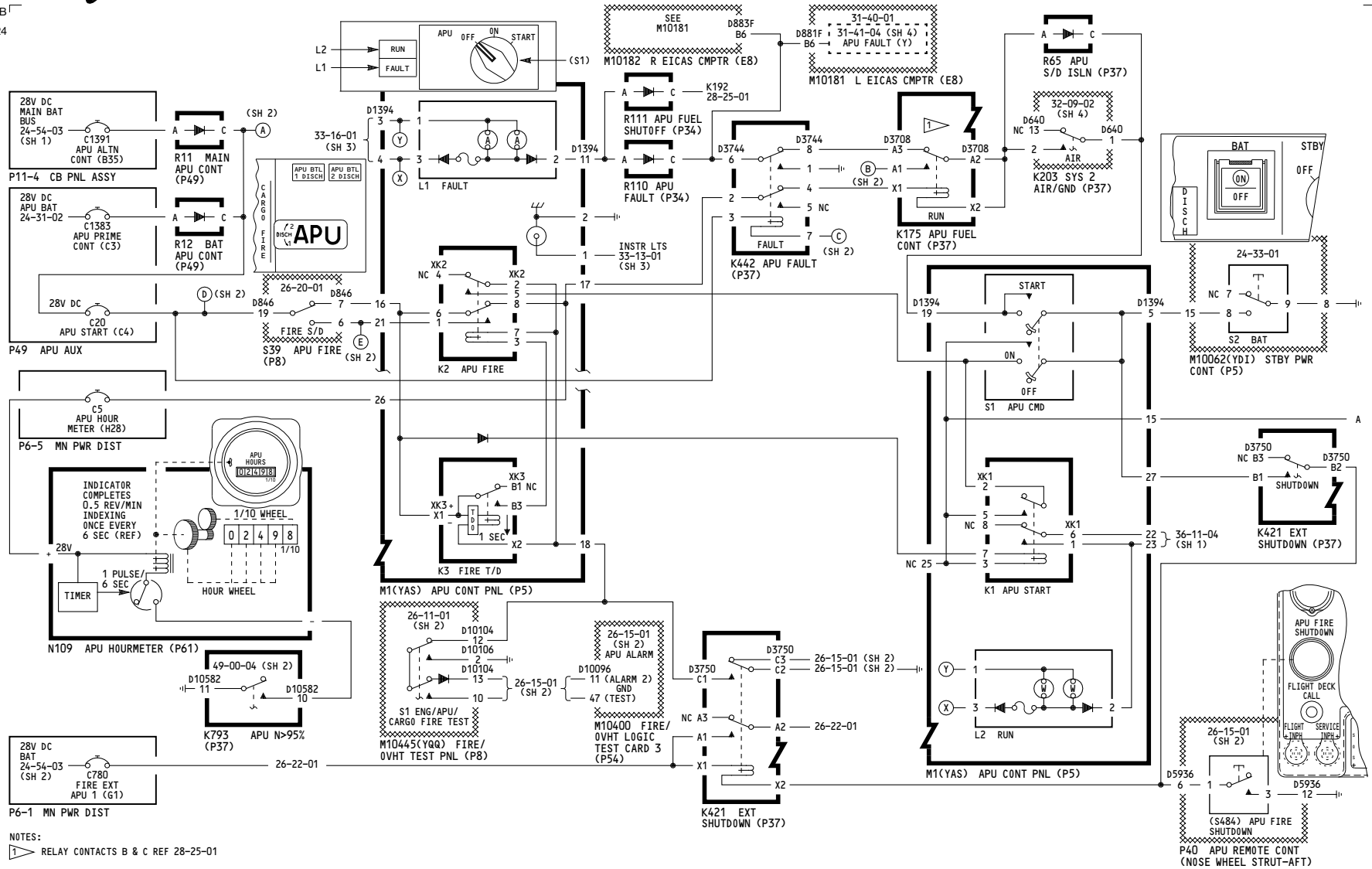
49-00-03

605

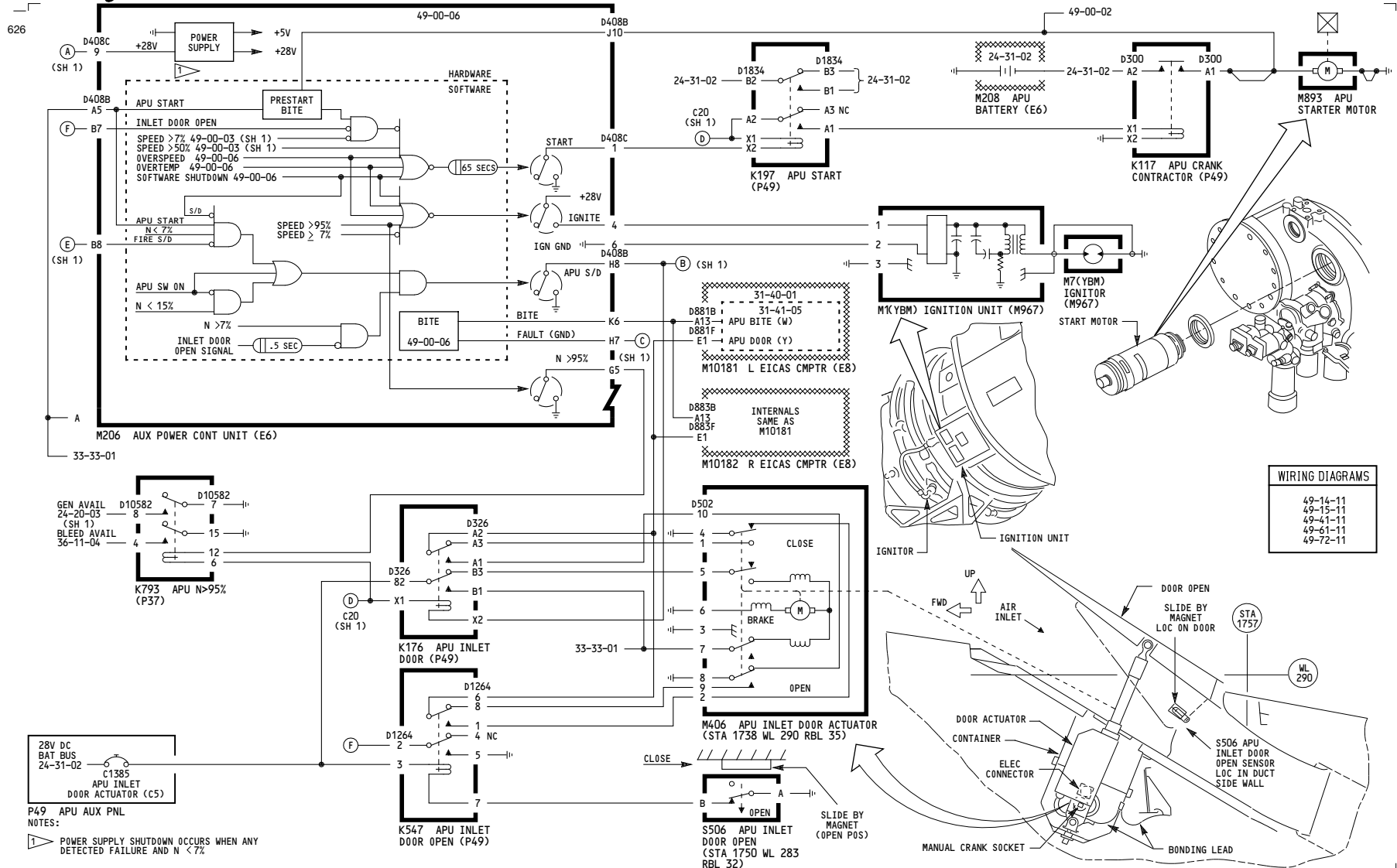


49-00-03

-B
624



49-00-04



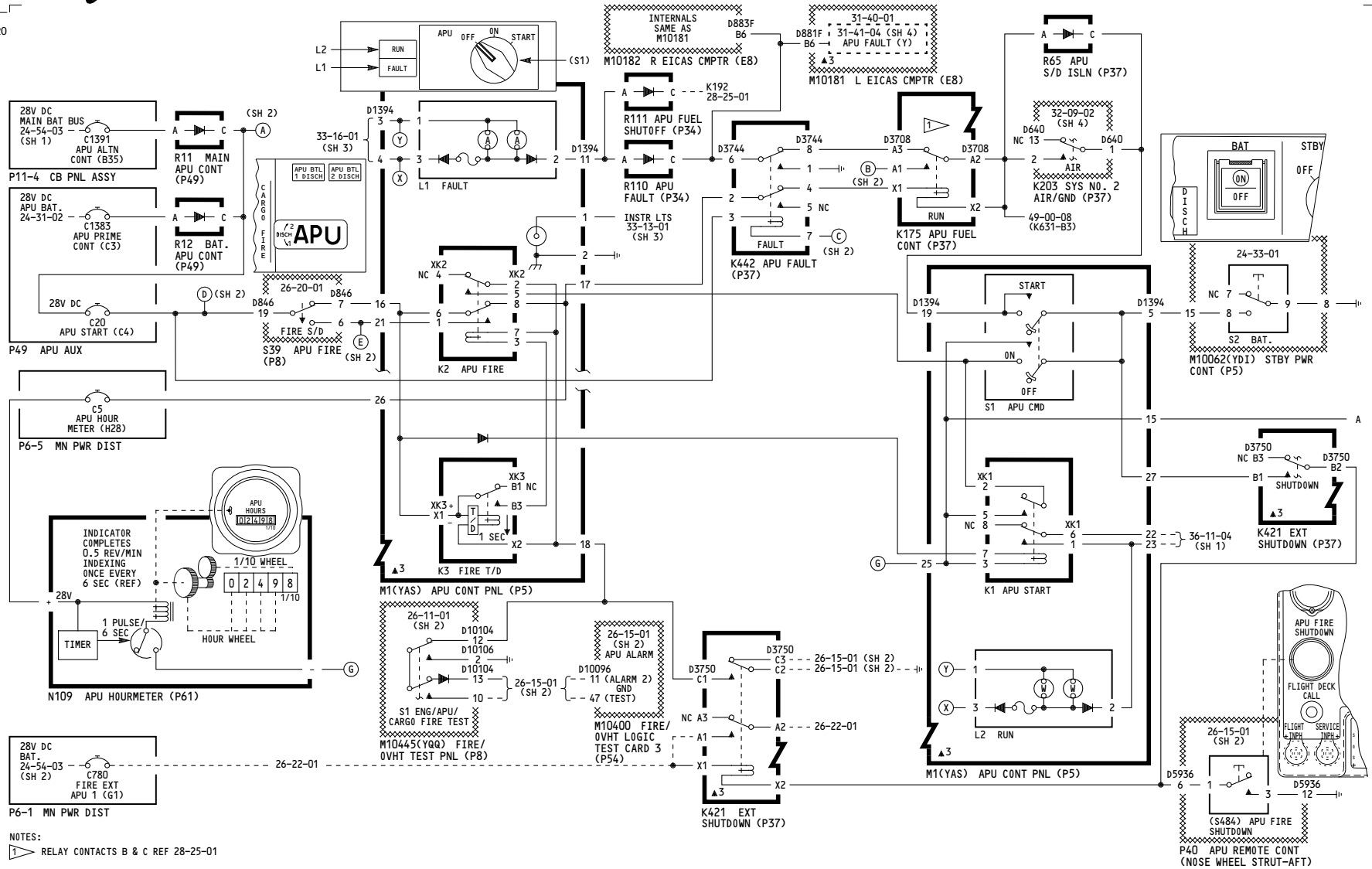
050-099

**AUXILIARY POWER UNIT
IGNITION AND STARTING**

D280T232

49-00-04

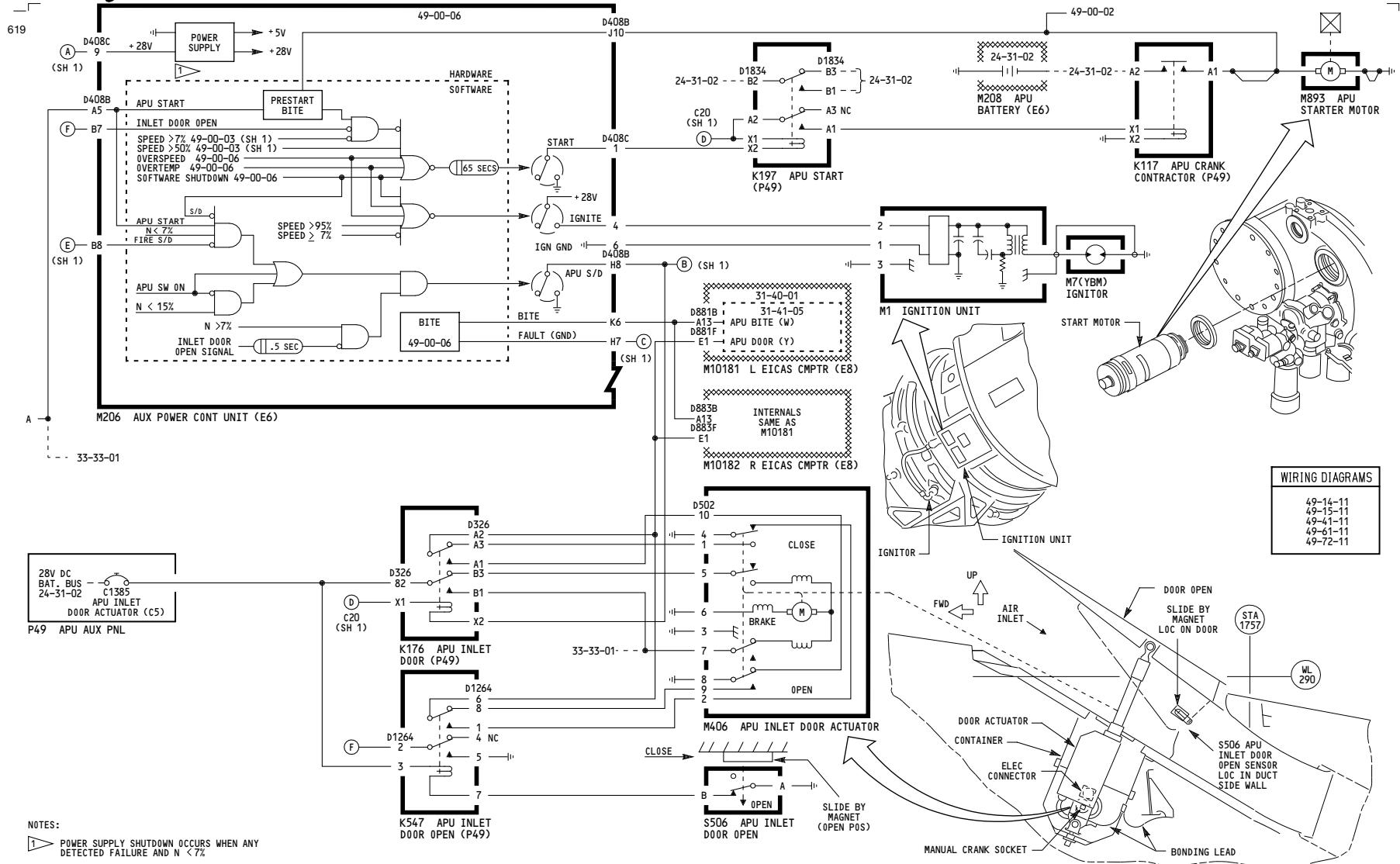
620



NOTES:
RELAY CONTACTS B & C REF 28-25-01

150-157	AUXILIARY POWER UNIT IGNITION AND STARTING
D280T232	

49-00-04



WIRING DIAGRAMS

49-14-11
49-15-11
49-41-11
49-61-11
49-72-11

NOTES:
 ▽ POWER SUPPLY SHUTDOWN OCCURS WHEN ANY DETECTED FAILURE AND N < 7%.

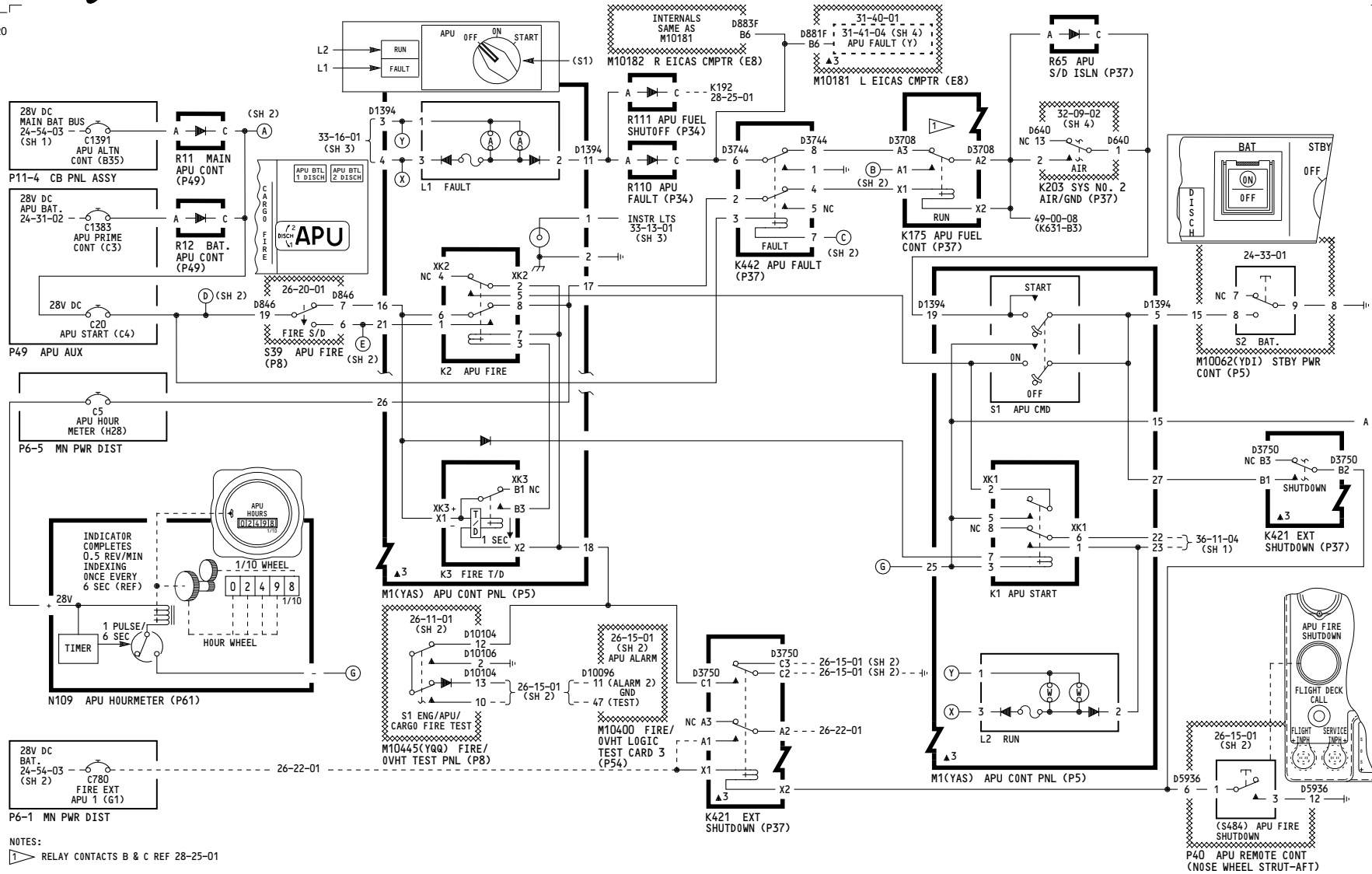
150-157

AUXILIARY POWER UNIT IGNITION AND STARTING

D280T232

49-00-04

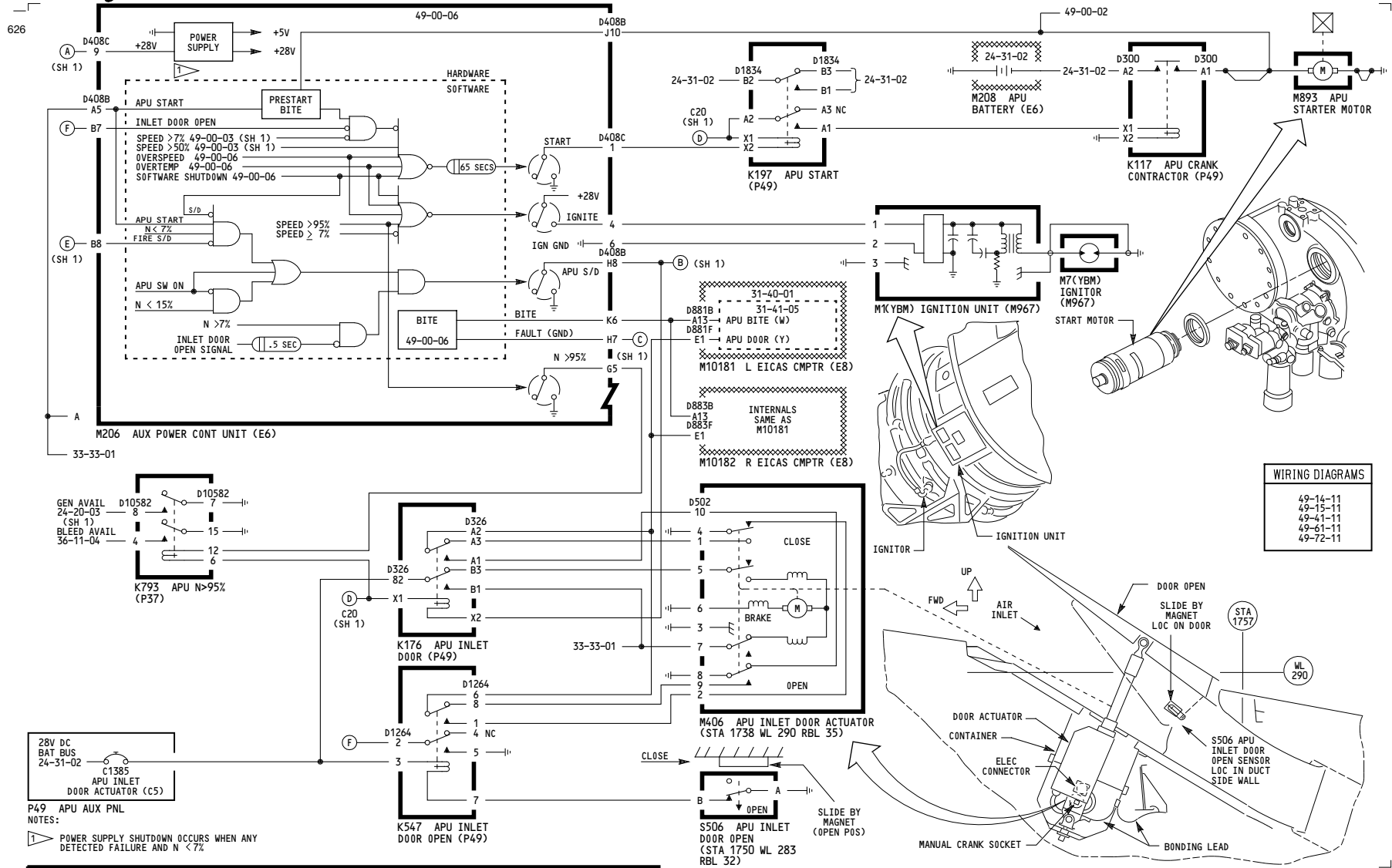
620



NOTES:
 RELAY CONTACTS B & C REF 28-25-01

162-199	AUXILIARY POWER UNIT IGNITION AND STARTING
D280T232	

49-00-04



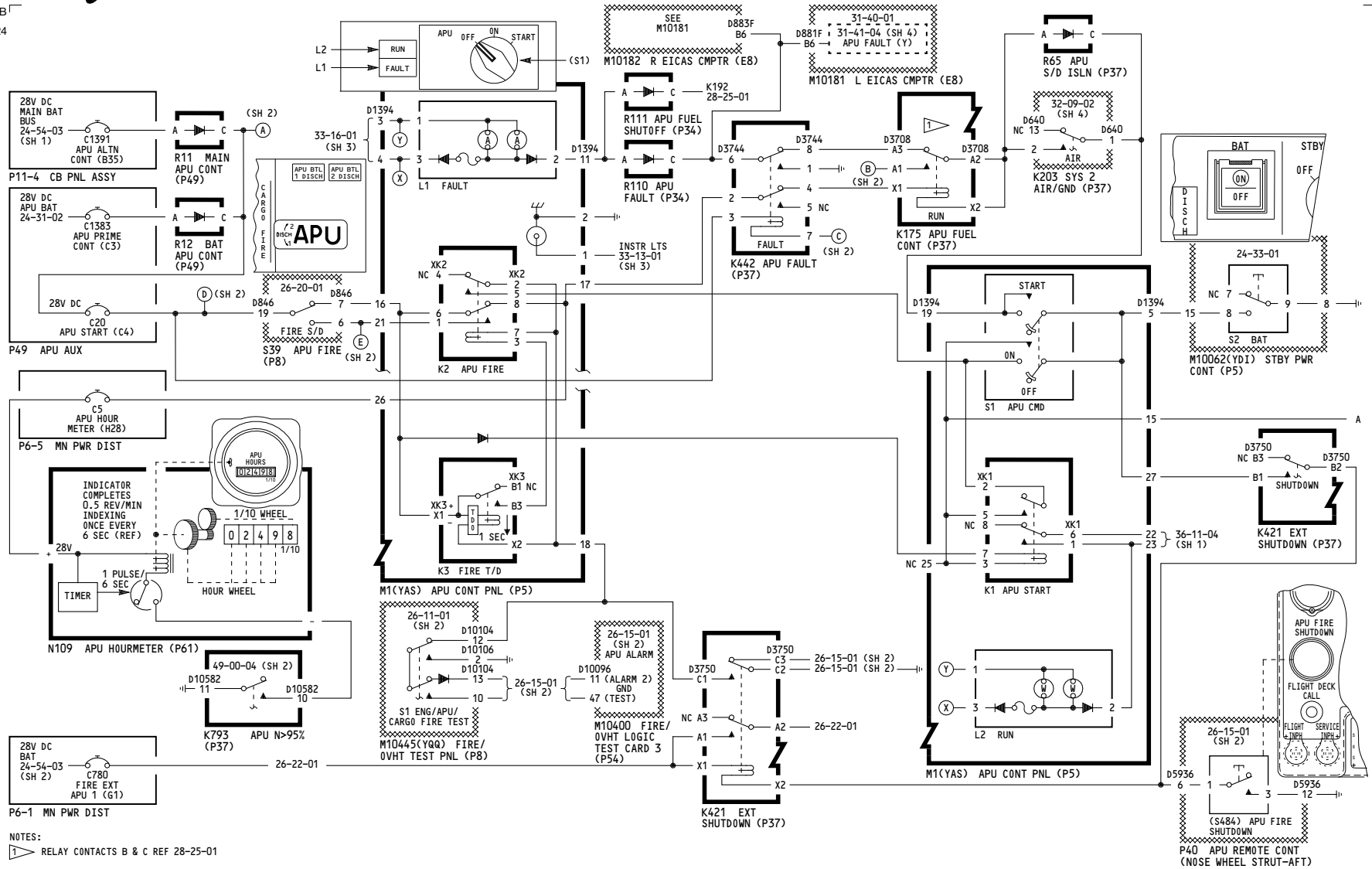
162-199

**AUXILIARY POWER UNIT
IGNITION AND STARTING**

D280T232

49-00-04

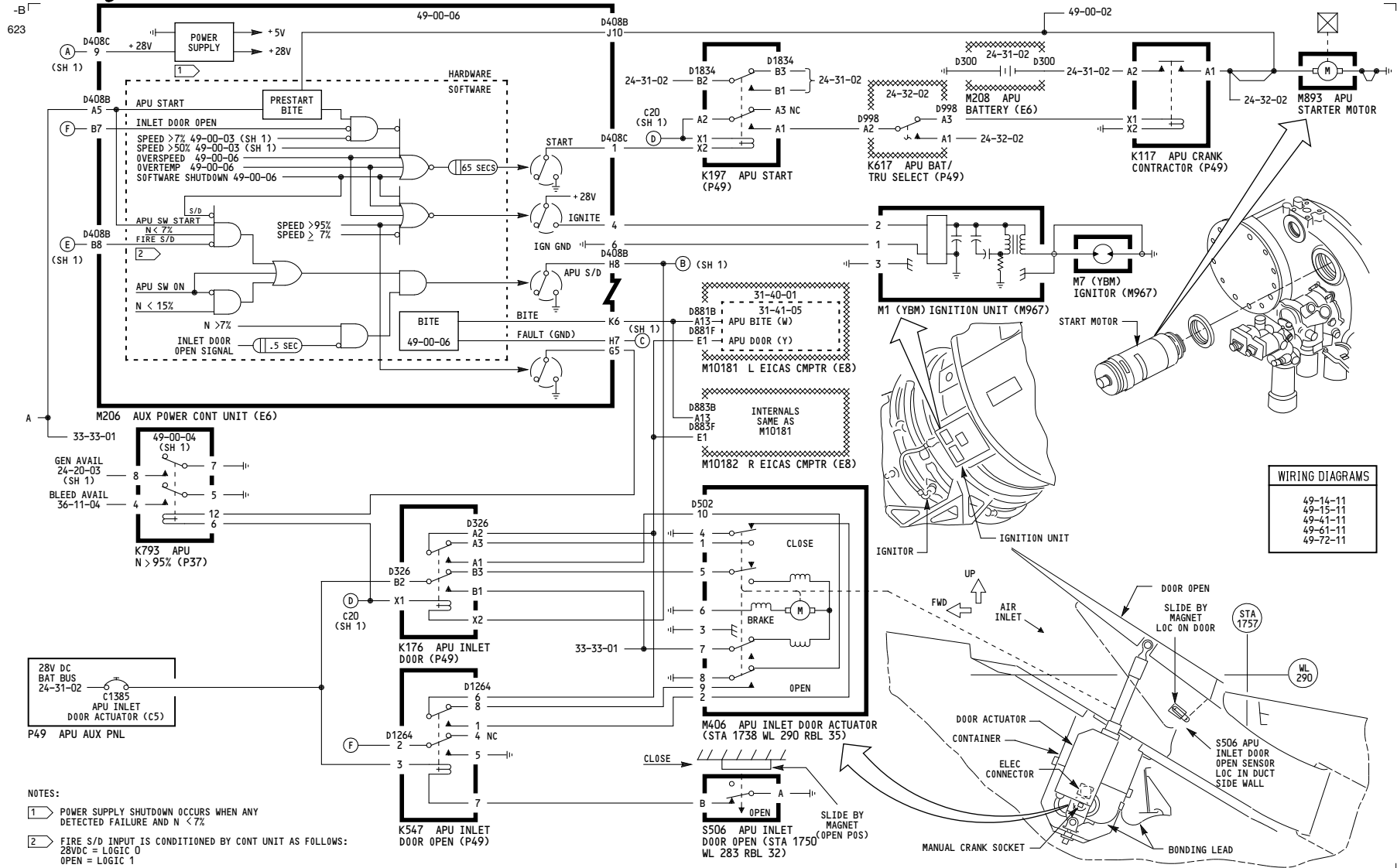
-B
624



**AUXILIARY POWER UNIT
IGNITION AND STARTING**

D280T232

49-00-04



NOTES:

1 POWER SUPPLY SHUTDOWN OCCURS WHEN ANY DETECTED FAILURE AND N < 7%

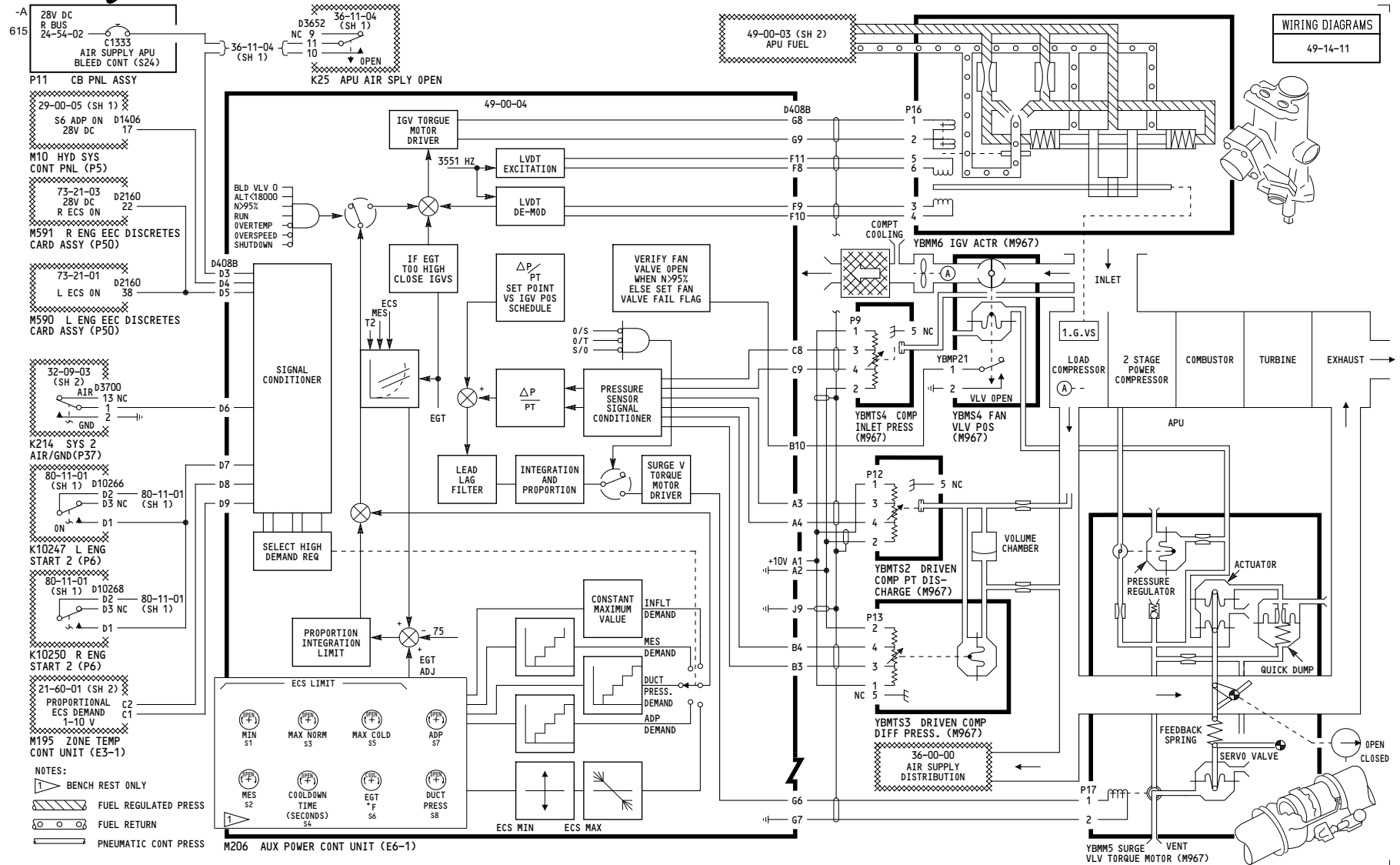
2 FIRE S/D INPUT IS CONDITIONED BY CONT UNIT AS FOLLOWS:
 28VDC = LOGIC 0
 OPEN = LOGIC 1

275-299

**AUXILIARY POWER UNIT
IGNITION AND STARTING**

D280T232

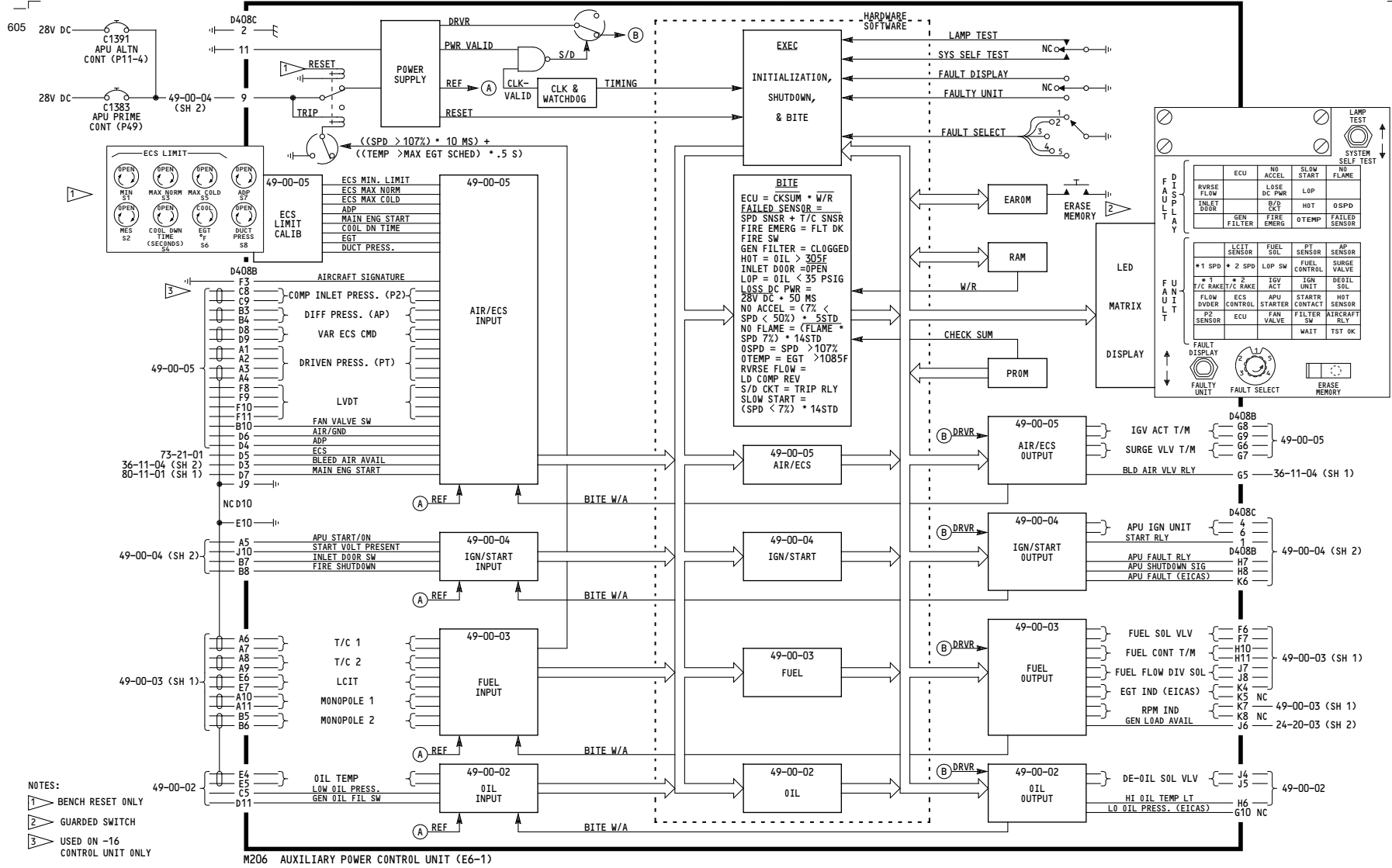
49-00-04



WIRING DIAGRAMS
49-14-11

49-00-05

ALL	AUXILIARY POWER UNIT AIR
	D280T232

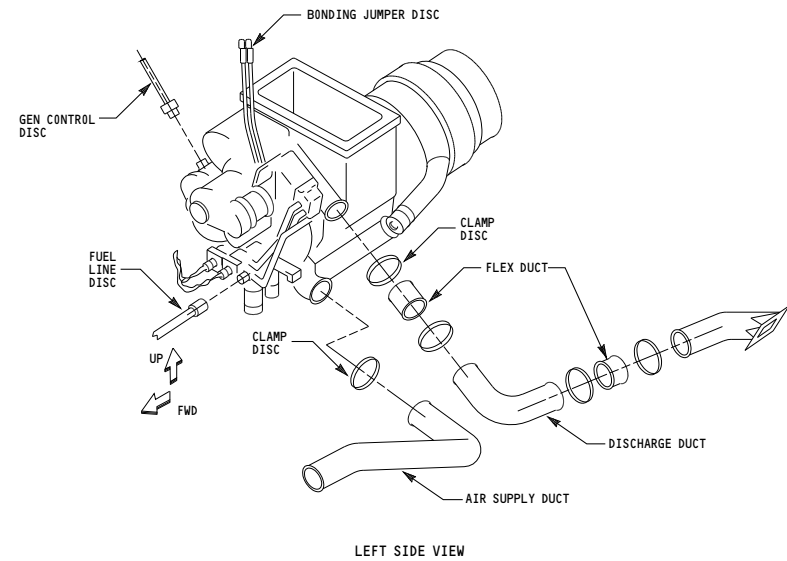
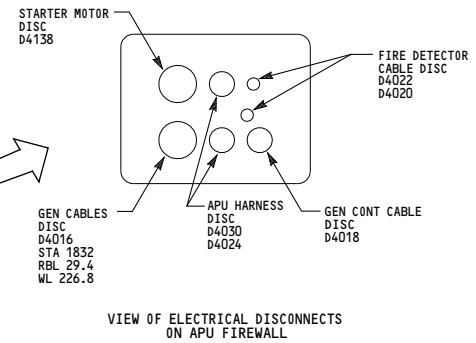
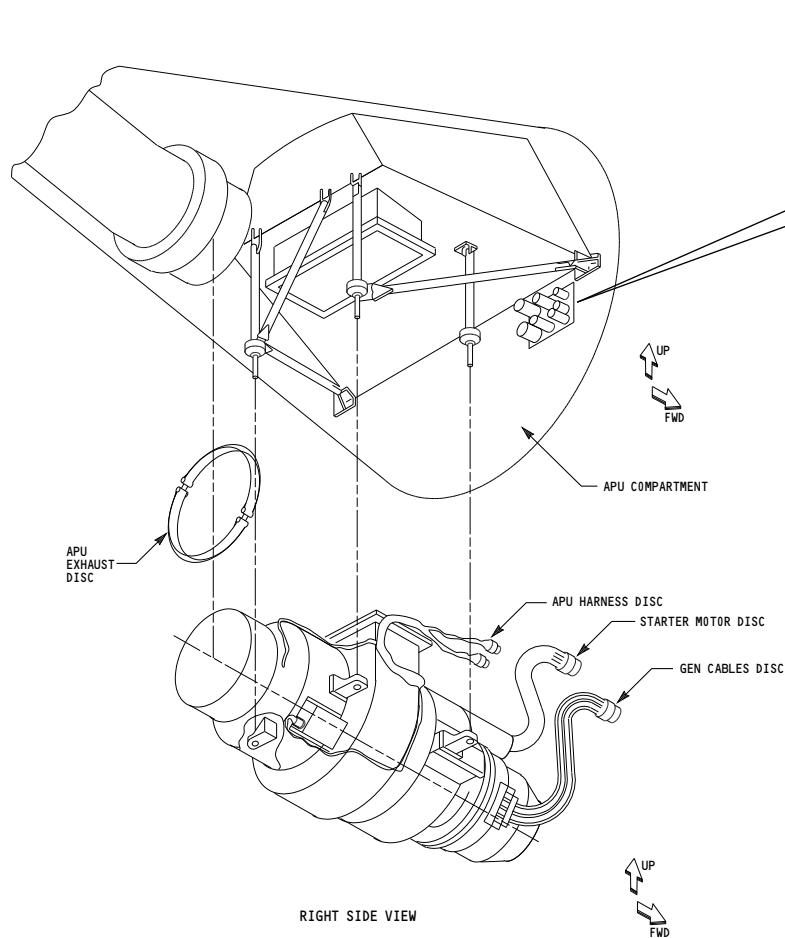


ALL

AUXILIARY POWER UNIT CONTROL AND BITE

D280T232

605



ALL	<p>AUXILIARY POWER UNIT DISCONNECTS</p> <p>D280T232</p>
-----	--

49-00-07

Page 101

Jan 21/2005