

**CHAPTER**

**52**

**DOORS**

CHAPTER 52  
DOORS

CH-SC-SU	Schem	Page	Sheet	Date	CH-SC-SU	Schem	Page	Sheet	Date
52-EFFECTIVE PAGES		1 thru 2		Aug 05/2009	52-35-01				
52-CONTENTS						1	101	1	Jan 21/2005
	1			Jun 28/2006				2	Jan 21/2005
	2			Feb 06/2009			102	1	Jan 21/2005
	3			Jun 28/2006				2	Jan 21/2005
	4			BLANK		2	101		Jan 21/2005
52-ALPHABETICAL INDEX							102		Jan 21/2005
	1			Jun 28/2006		3	101		Jan 21/2005
	2			BLANK	52-36-01				
52-11-01							101		Jan 21/2005
	101	1		Jan 21/2005	52-48-01				
		2		Jan 21/2005			101		Jan 21/2005
		3		Jan 21/2005	52-49-01				
		4		Jan 21/2005			101		Jan 21/2005
52-21-01					52-51-01				
	101			Jan 21/2005			101		Jan 21/2005
	102			Jan 21/2005			101.1		Feb 06/2009
52-34-01							101.2		Feb 06/2009
	101	1		Jan 21/2005			101.3		Feb 06/2009
		2		Jan 21/2005			101.4		Feb 06/2009
		3		Jan 21/2005			101.5		Feb 06/2009
		4		Jan 21/2005			101.6		Feb 06/2009
							101.7		Feb 06/2009
							101.8		Feb 06/2009

A = Added, R = Revised, D = Deleted, O = Overflow

## 52-EFFECTIVE PAGES

Page 1  
Aug 05/2009

D280T232

BOEING PROPRIETARY - Copyright © Unpublished Work - See title page for details

CHAPTER 52  
DOORS

CH-SC-SU	Schem	Page	Sheet	Date	CH-SC-SU	Schem	Page	Sheet	Date
52-51-01 (cont.)									
		102		Feb 06/2009					
52-70-01									
		101	1	Mar 09/2006					
			2	Mar 09/2006					
			3	Mar 09/2006					
		102	1	Mar 09/2006					
			2	Mar 09/2006					
			3	Mar 09/2006					
		103	1	Mar 09/2006					
			2	Mar 09/2006					
			3	Mar 09/2006					

A = Added, R = Revised, D = Deleted, O = Overflow

## 52-EFFECTIVE PAGES

D280T232

Page 2  
Aug 05/2009

CHAPTER 52  
DOORS

Title	CH-SC-SU	Schem	Page	Sheet	Date	Effectivity		
<b><u>ENTRY/SERVICE DOORS</u></b>								
ENTRY DOORS	52-11-01		101	1	Jan 21/2005	ALL		
				2	Jan 21/2005	ALL		
				3	Jan 21/2005	ALL		
				4	Jan 21/2005	ALL		
<b><u>OVERWING EMERGENCY EXIT HATCH</u></b>								
OVERWING ESCAPE HATCH	52-21-01		101		Jan 21/2005	050-099		
			102		Jan 21/2005	150-199 275-299		
<b><u>STANDARD FORWARD CARGO DOOR</u></b>								
FORWARD CARGO DOOR CONTROL	52-34-01		101	1	Jan 21/2005	ALL		
				2	Jan 21/2005	ALL		
				3	Jan 21/2005	ALL		
				4	Jan 21/2005	ALL		
<b><u>STANDARD AFT CARGO DOOR</u></b>								
AFT CARGO DOOR CONTROL	52-35-01	1	101	1	Jan 21/2005	050-099		
				2	Jan 21/2005	050-099		
				1	Jan 21/2005	150-199 275-299		
				2	Jan 21/2005	150-199 275-299		
			102		Jan 21/2005	050-099		
					Jan 21/2005	150-199 275-299		
				3	101		Jan 21/2005	ALL
<b><u>BULK CARGO DOOR</u></b>								
BULK CARGO DOOR	52-36-01		101		Jan 21/2005	ALL		

## CHAPTER 52 DOORS

Title	CH-SC-SU	Schem	Page	Sheet	Date	Effectivity
<b><u>EQUIPMENT COMPARTMENT EXTERIOR DOORS</u></b>						
EQUIPMENT COMPARTMENT EXTERIOR DOORS	52-48-01		101		Jan 21/2005	ALL
<b><u>EXTERIOR SERVICE DOORS</u></b>						
EXTERIOR SERVICE DOORS	52-49-01		101		Jan 21/2005	ALL
<b><u>FLIGHT COMPARTMENT DOOR</u></b>						
FLIGHT DECK DOOR	52-51-01		101		Jan 21/2005	050-099 151-152 154 156 162-199 275
			101.1		Feb 06/2009	050-051 155 157 276-280
			101.2		Feb 06/2009	151-152 275
			101.3		Feb 06/2009	154
			101.4		Feb 06/2009	156
			101.5		Feb 06/2009	162
			101.6		Feb 06/2009	163-165
			101.7		Feb 06/2009	166
			101.8		Feb 06/2009	167
			102		Feb 06/2009	150 153
<b><u>DOOR WARNING</u></b>						
DOOR WARNING	52-70-01		101	1	Mar 09/2006	050-099
				2	Mar 09/2006	050-099
				3	Mar 09/2006	050-099
			102	1	Mar 09/2006	150-199
				2	Mar 09/2006	150-199
				3	Mar 09/2006	150-199

CHAPTER 52  
DOORS

Title	CH-SC-SU	Schem	Page	Sheet	Date	Effectivity
DOOR WARNING (cont.)	52-70-01		103	1	Mar 09/2006	275-299
				2	Mar 09/2006	275-299
				3	Mar 09/2006	275-299

CHAPTER 52  
DOORS

CH-SC-SU	Title
52-35-01	AFT CARGO DOOR CONTROL
52-36-01	BULK CARGO DOOR
52-70-01	DOOR WARNING
52-11-01	ENTRY DOORS
52-48-01	EQUIPMENT COMPARTMENT EXTERIOR DOORS
52-49-01	EXTERIOR SERVICE DOORS
52-51-01	FLIGHT DECK DOOR
52-34-01	FORWARD CARGO DOOR CONTROL
52-21-01	OVERWING ESCAPE HATCH

CH-SC-SU	Title

## 52-ALPHABETICAL INDEX

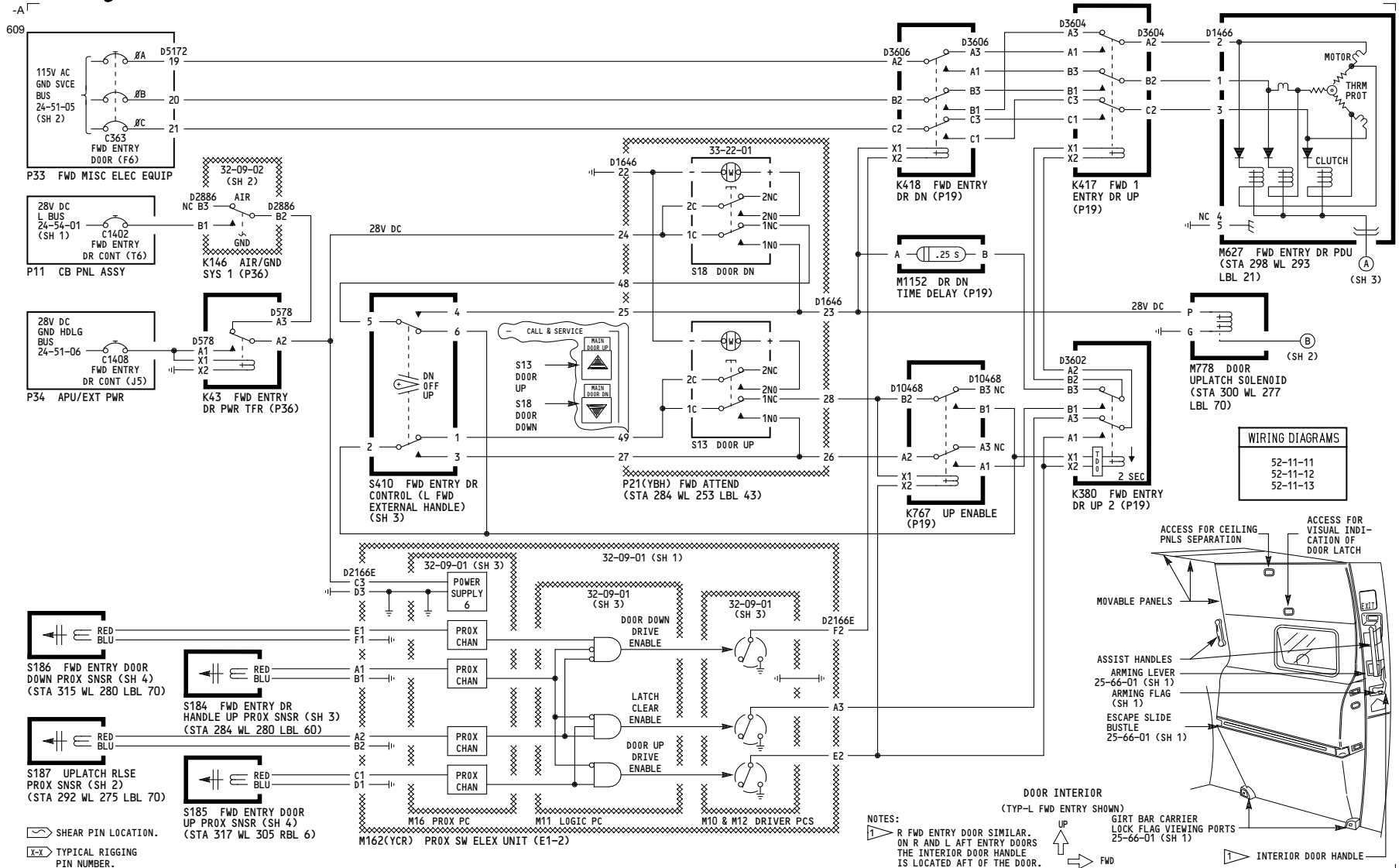
Page 1  
Jun 28/2006

D280T232

BOEING PROPRIETARY - Copyright © Unpublished Work - See title page for details

THIS PAGE INTENTIONALLY LEFT BLANK



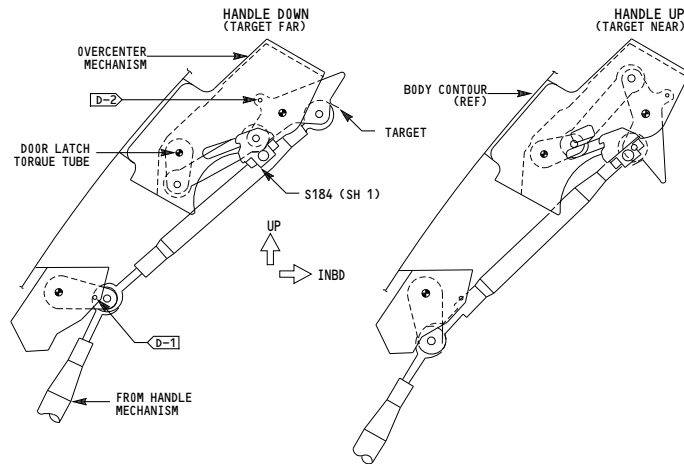


**52-11-01**

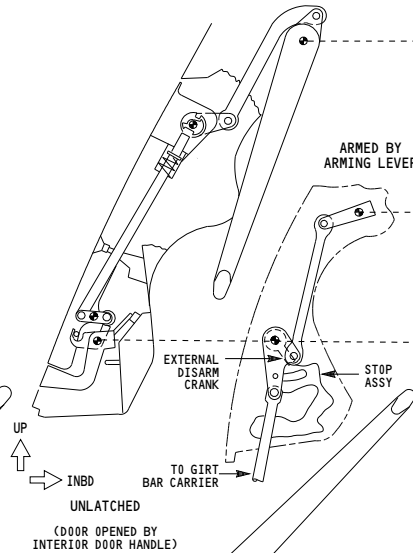


Page 101  
Sheet 2  
Jan 21/2005

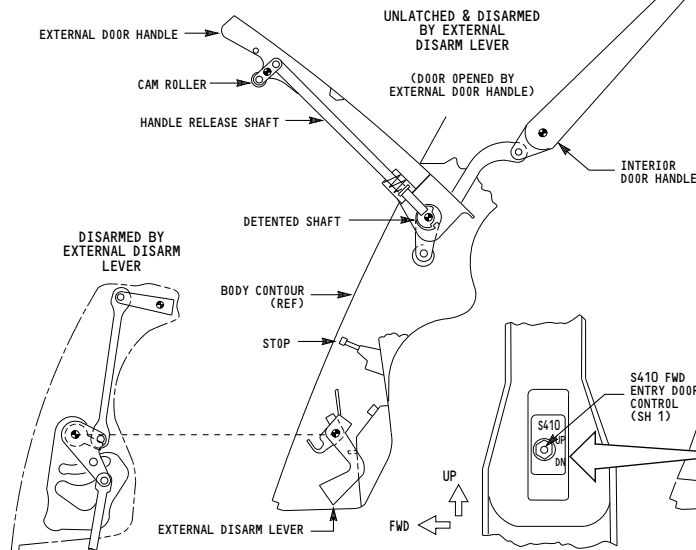
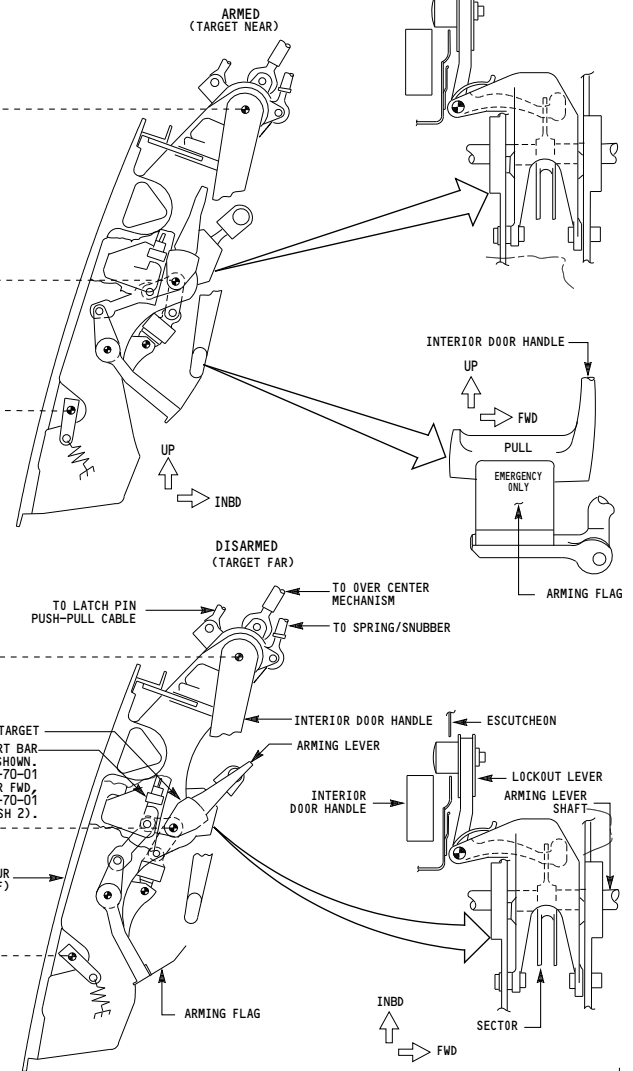
## ② HANDLE UP PROXIMITY SENSOR ACTUATION (L FWD ENTRY DOOR ONLY) 605 (SH 2)



## ENTRY DOOR HANDLES SEQUENCE NORMALLY LATCHED



## ① GIRT BAR ARMING SEQUENCE (SH 2)

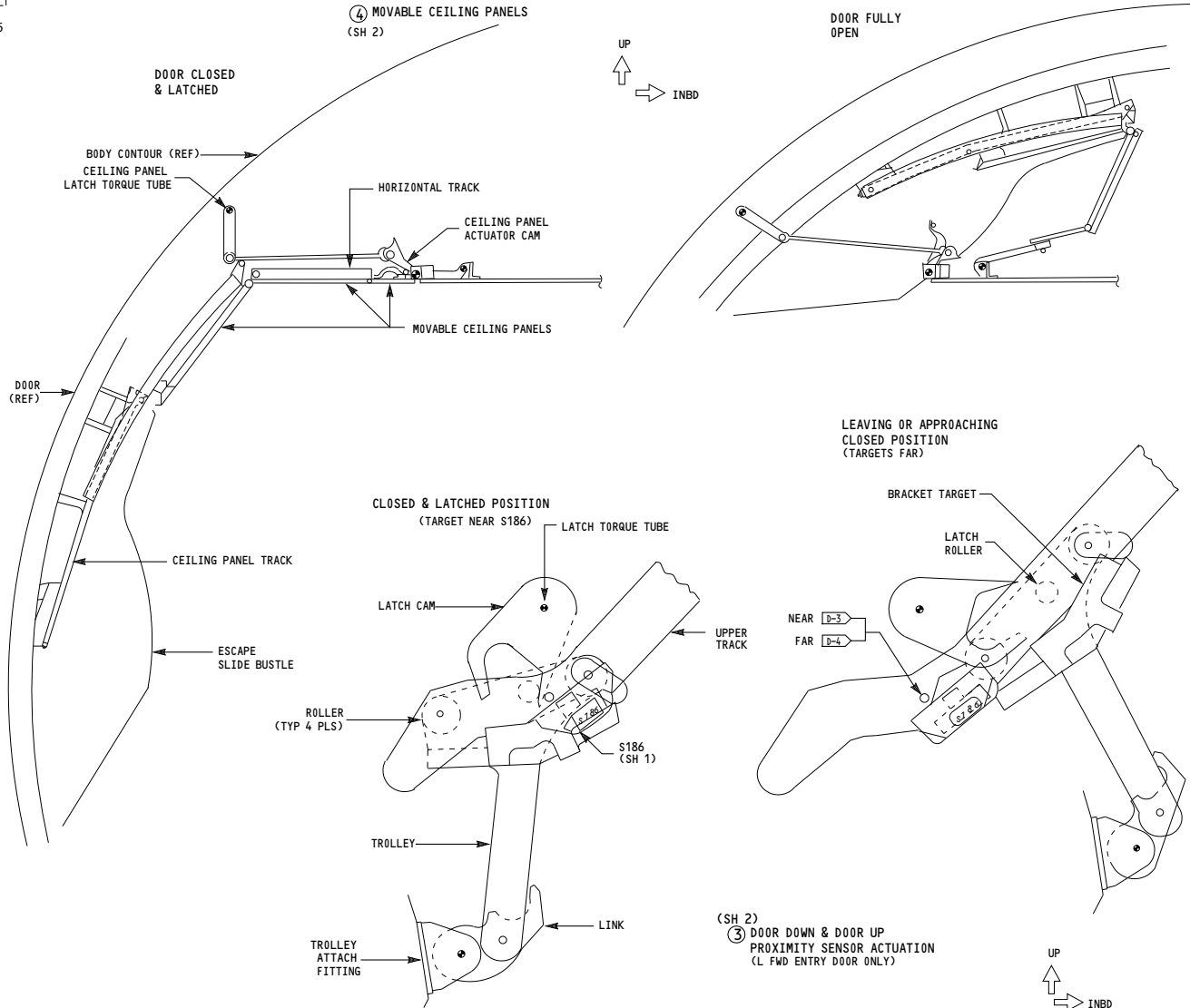


ALL	ENTRY DOORS
	D280T232

52-11-01

605

**④ MOVABLE CEILING PANELS**  
(SH 2)



ALL

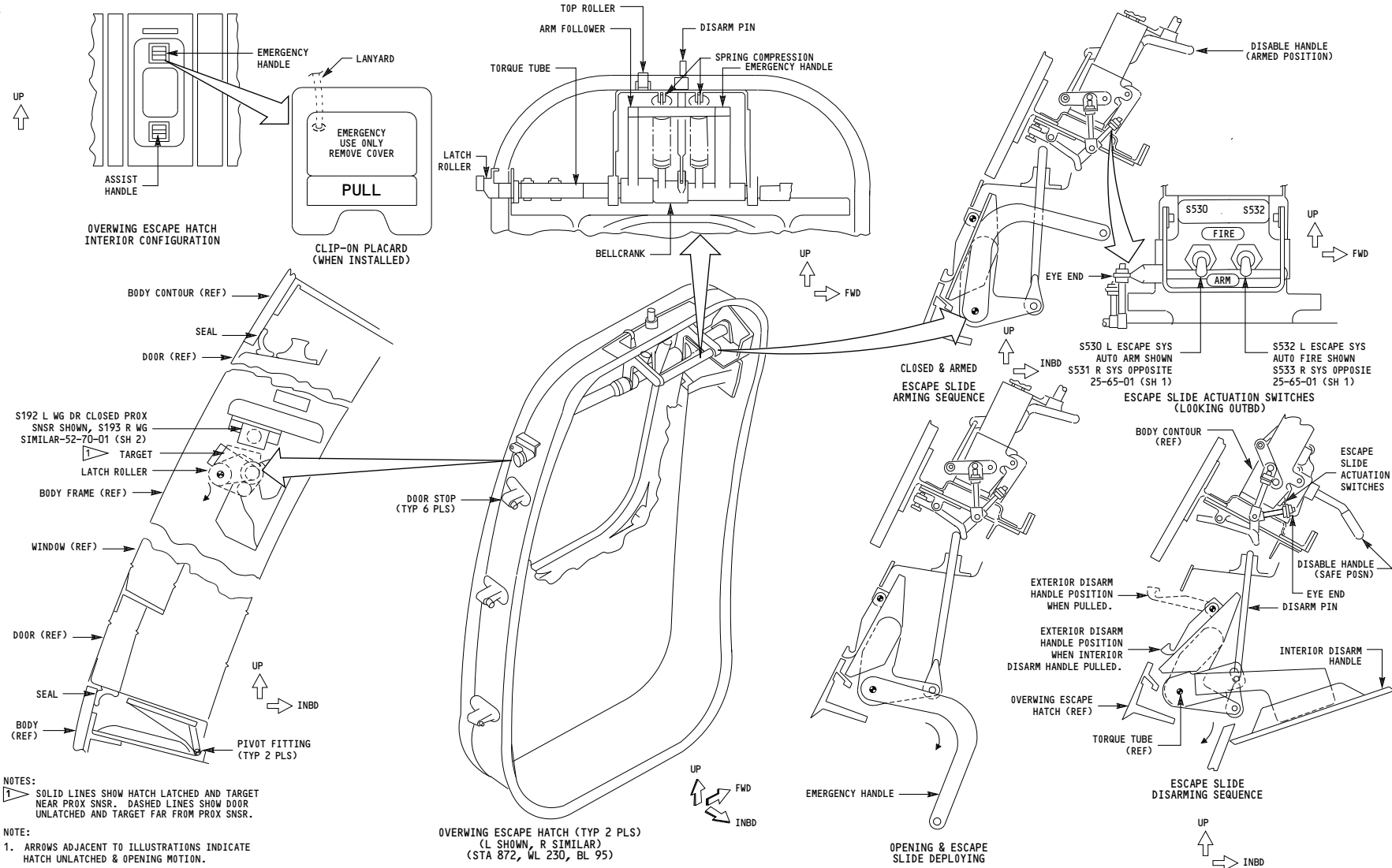
**ENTRY DOORS**

D280T232

**52-11-01**

Page 101  
Sheet 4  
Jan 21/2005

607



050-099

**OVERWING ESCAPE HATCH**

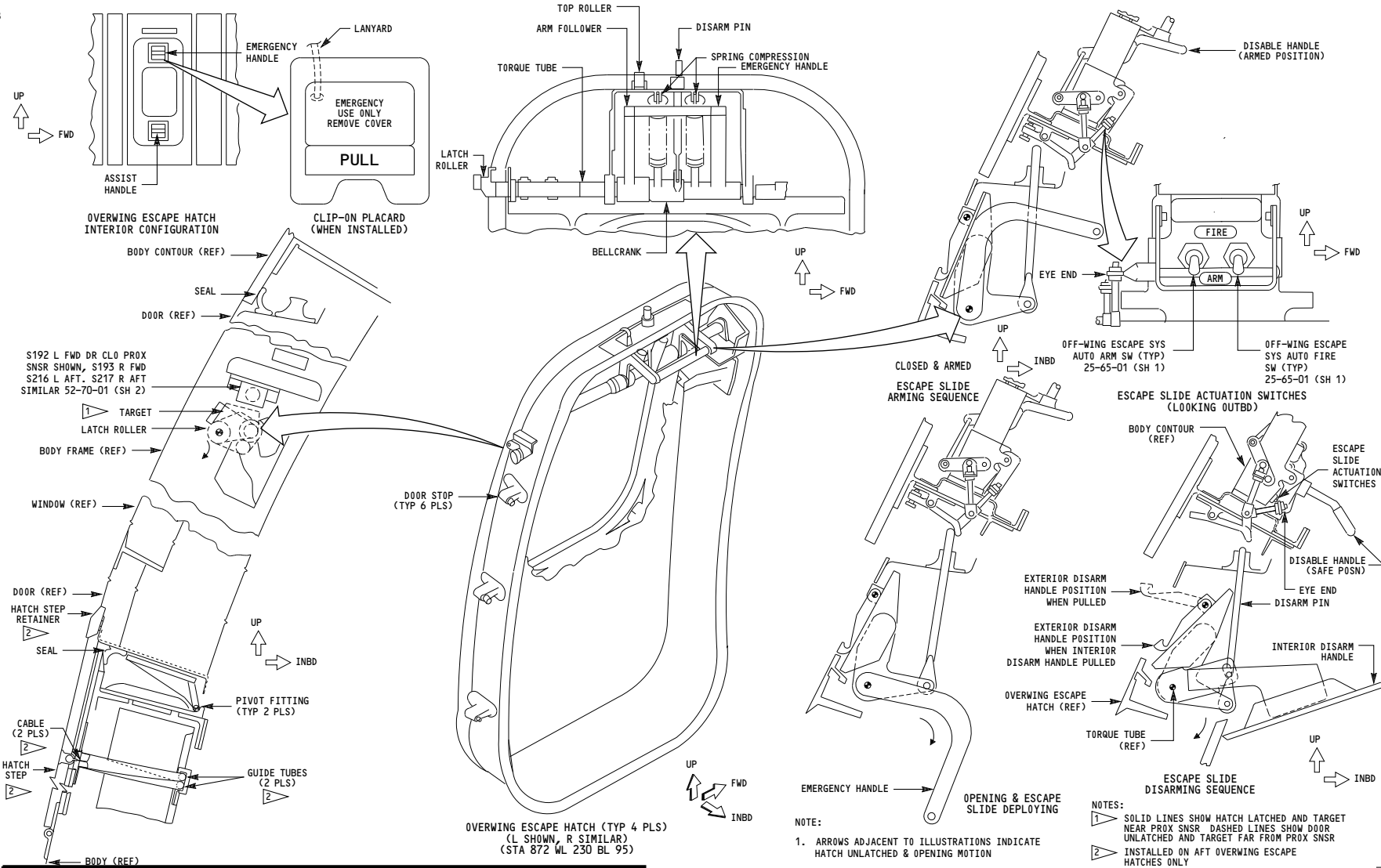
D280T232

**52-21-01**

Page 101

Jan 21/2005

608



150-199, 275-299

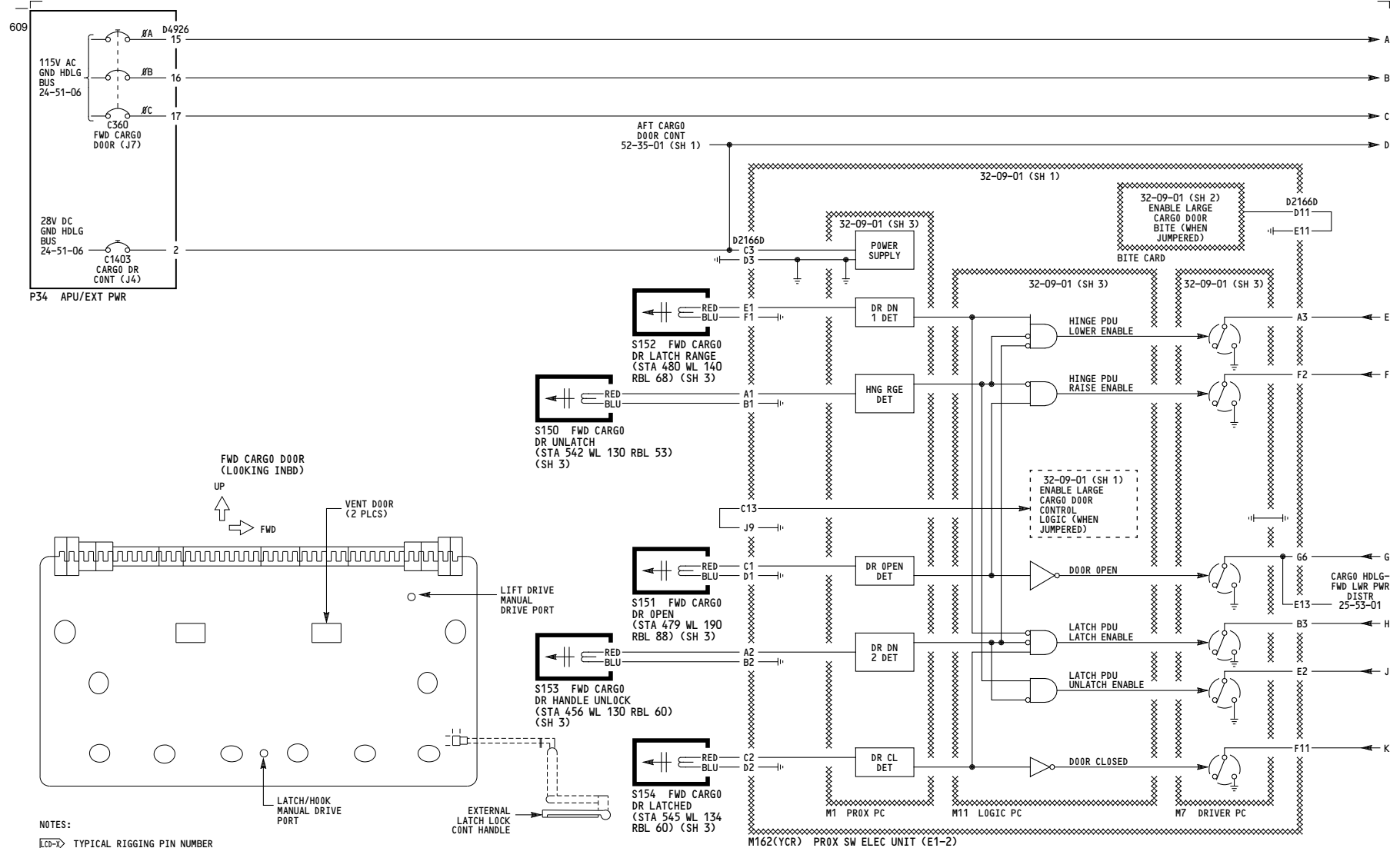
**OVERWING ESCAPE HATCH**

D280T232

**52-21-01**

Page 102

Jan 21/2005



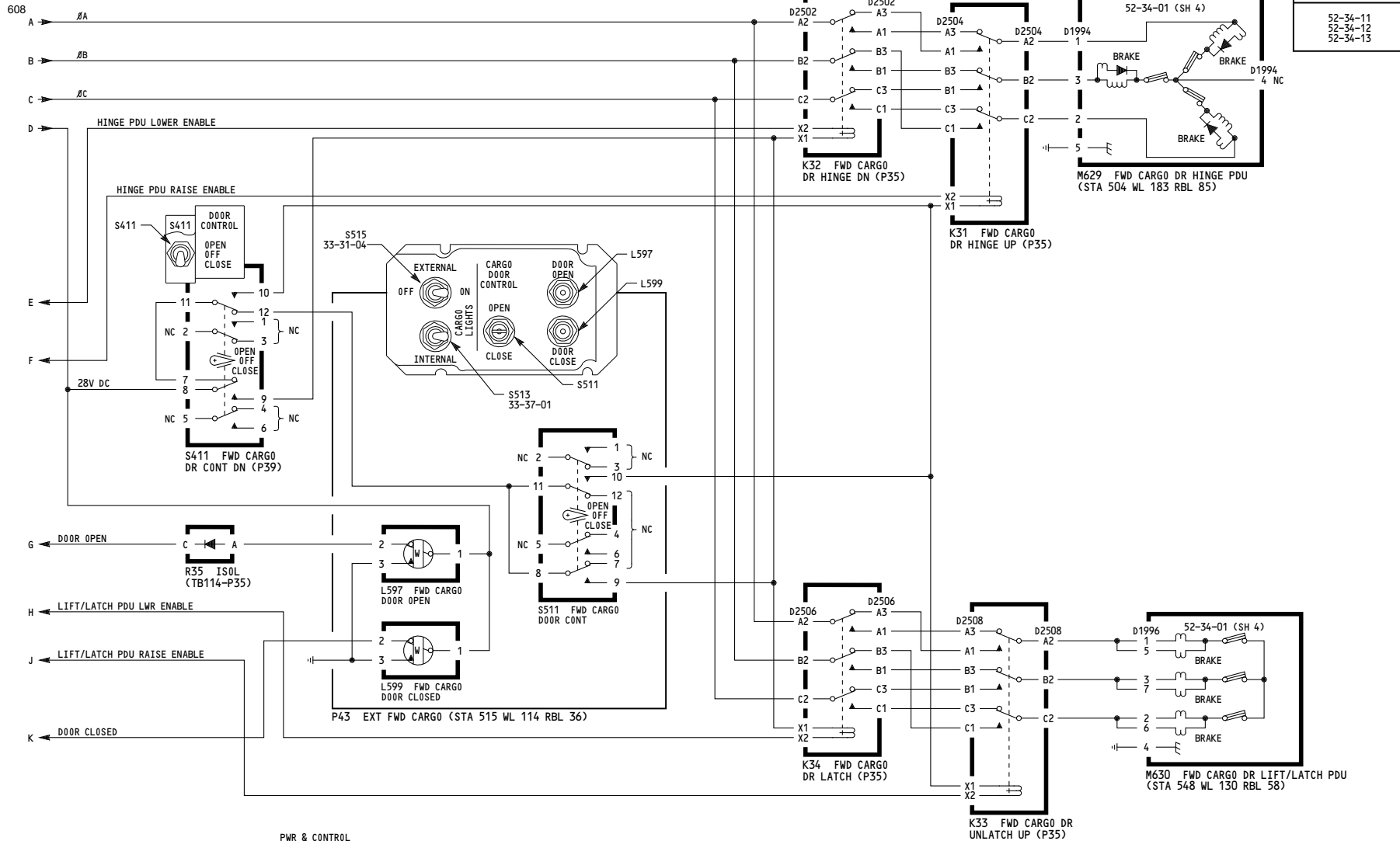
ALL

## FORWARD CARGO DOOR CONTROL

D280T232

52-34-01

Page 101  
Sheet 1  
Jan 21/2005



ALL

**FORWARD CARGO  
DOOR CONTROL**

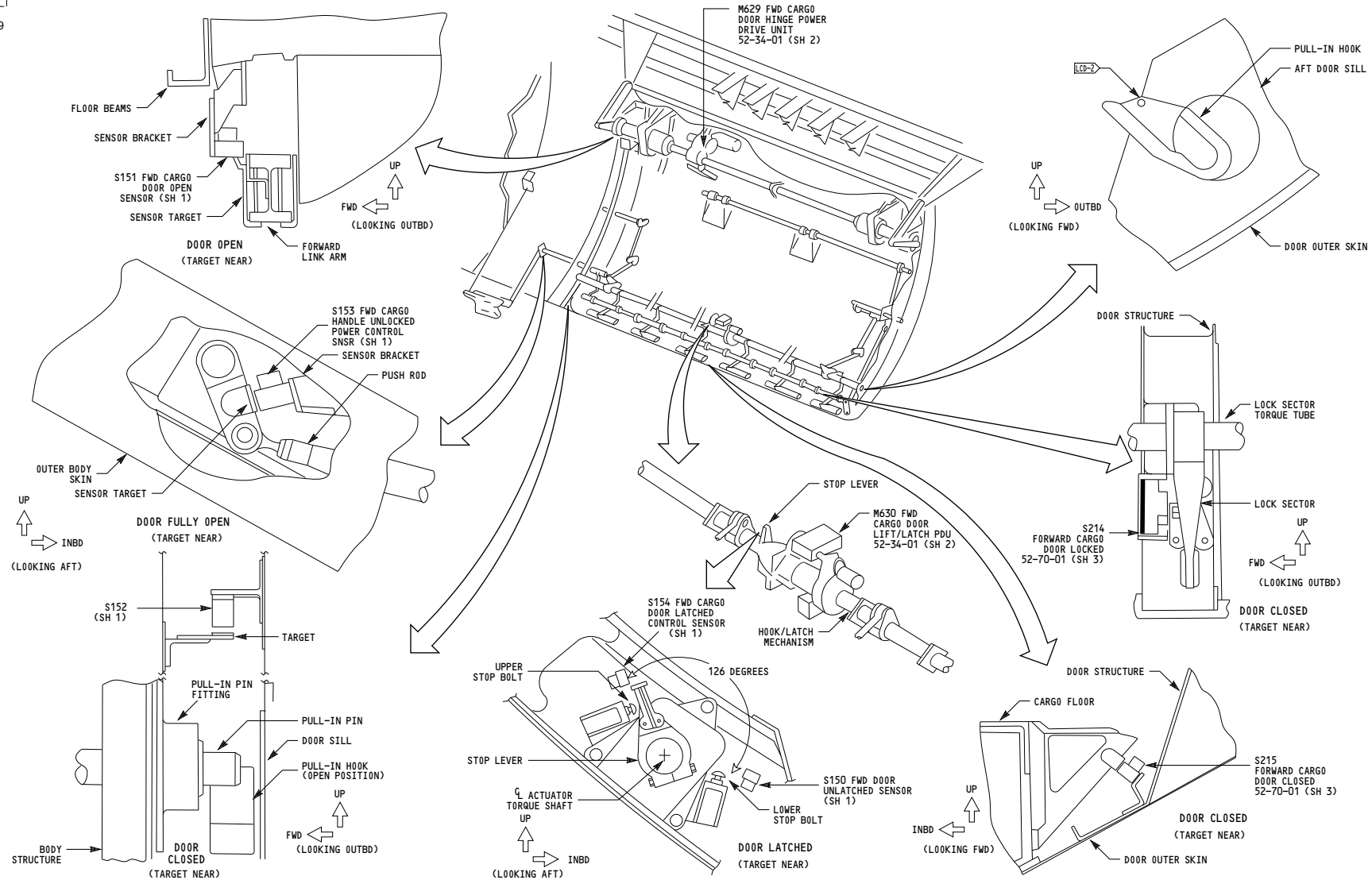
D280T232

**52-34-01**

Page 101  
Sheet 2  
Jan 21/2005



609



ALL

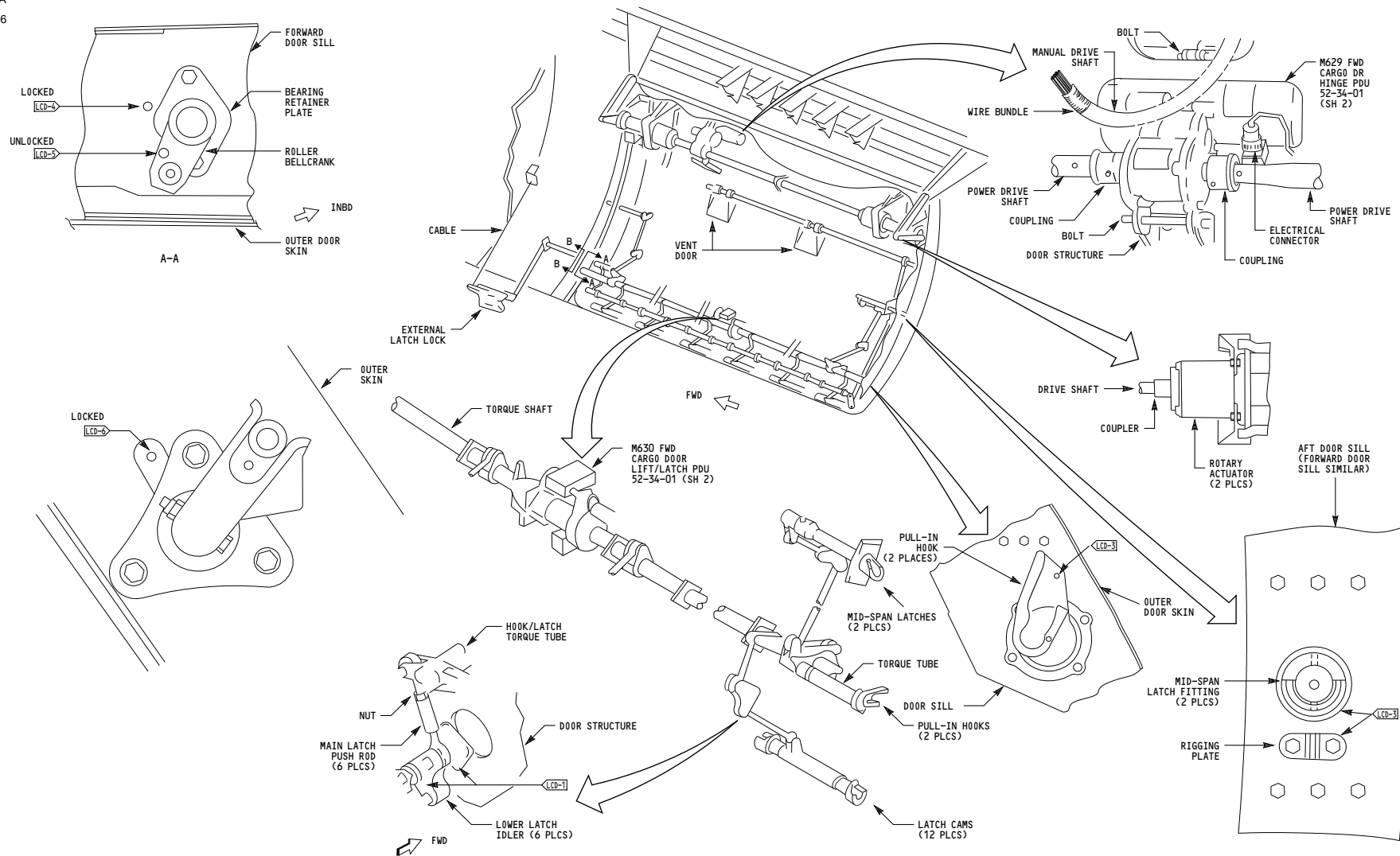
**FORWARD CARGO  
DOOR CONTROL**

D280T232

**52-34-01**

Page 101  
Sheet 3  
Jan 21/2005

-A  
606



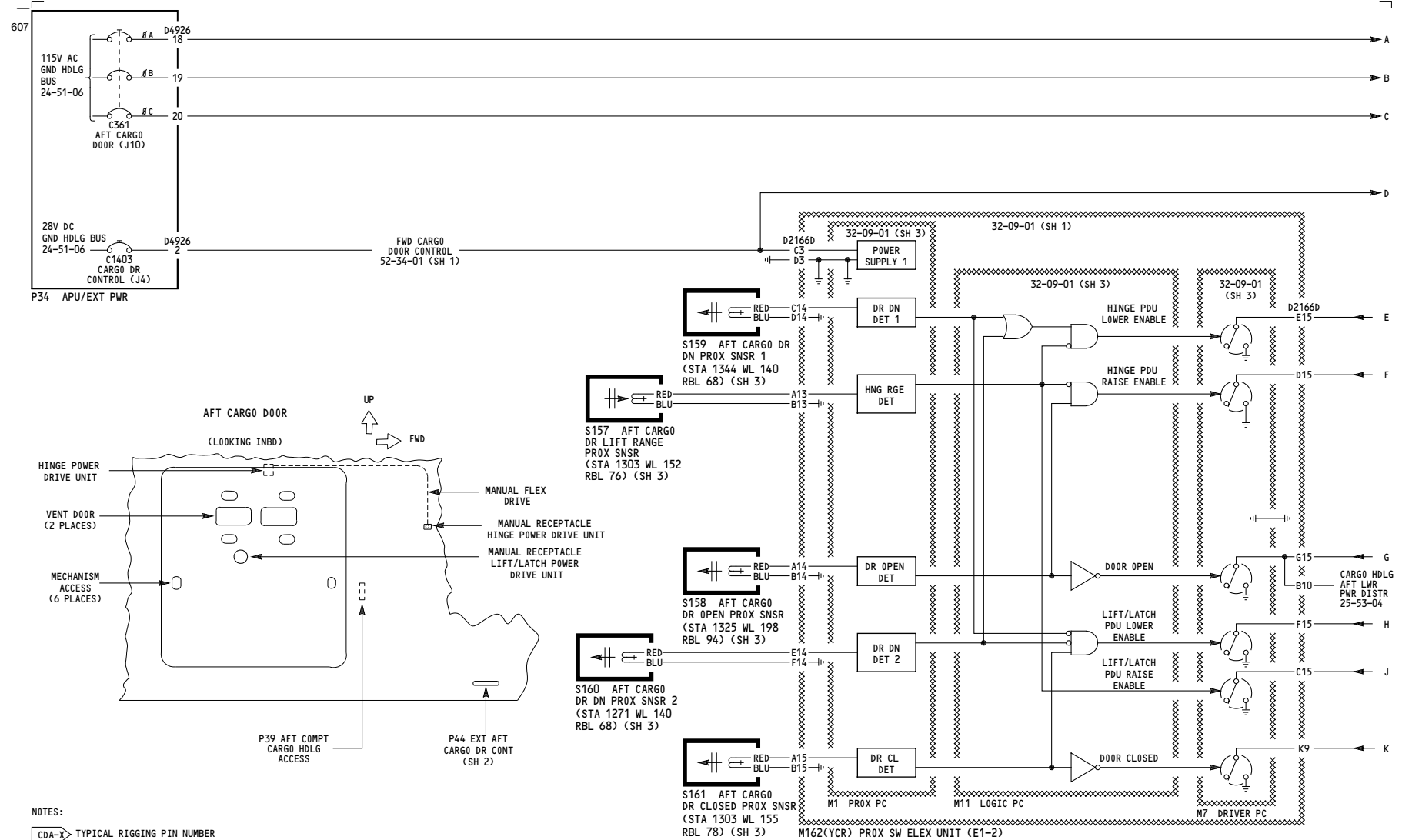
ALL

**FORWARD CARGO  
DOOR CONTROL**

D280T232

**52-34-01**

Page 101  
Sheet 4  
Jan 21/2005



050-099

## AFT CARGO D00R CONTROL

D280T232

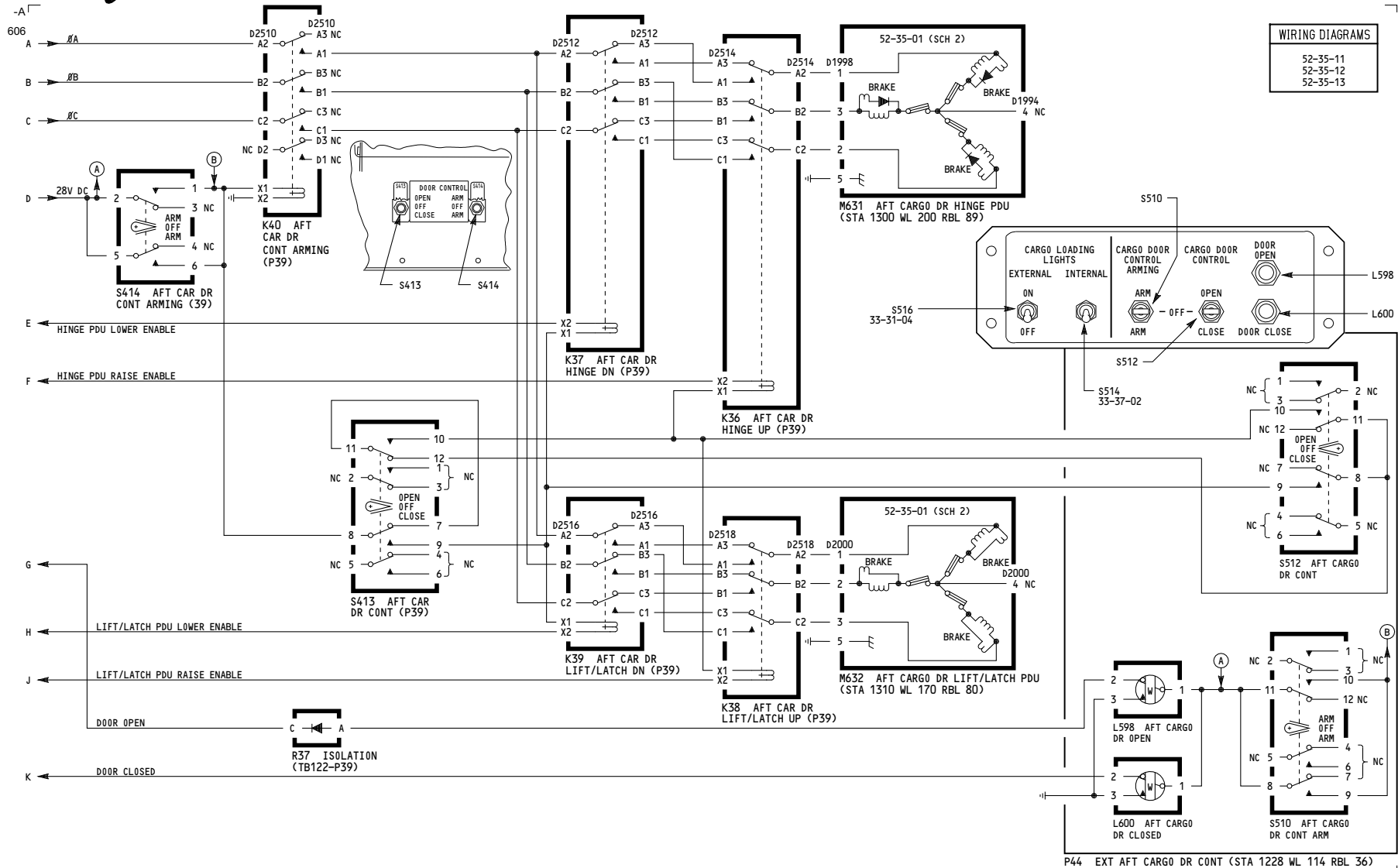
**52-35-01**

Schem 1

Page 101

Sheet 1

Jan 21/2005



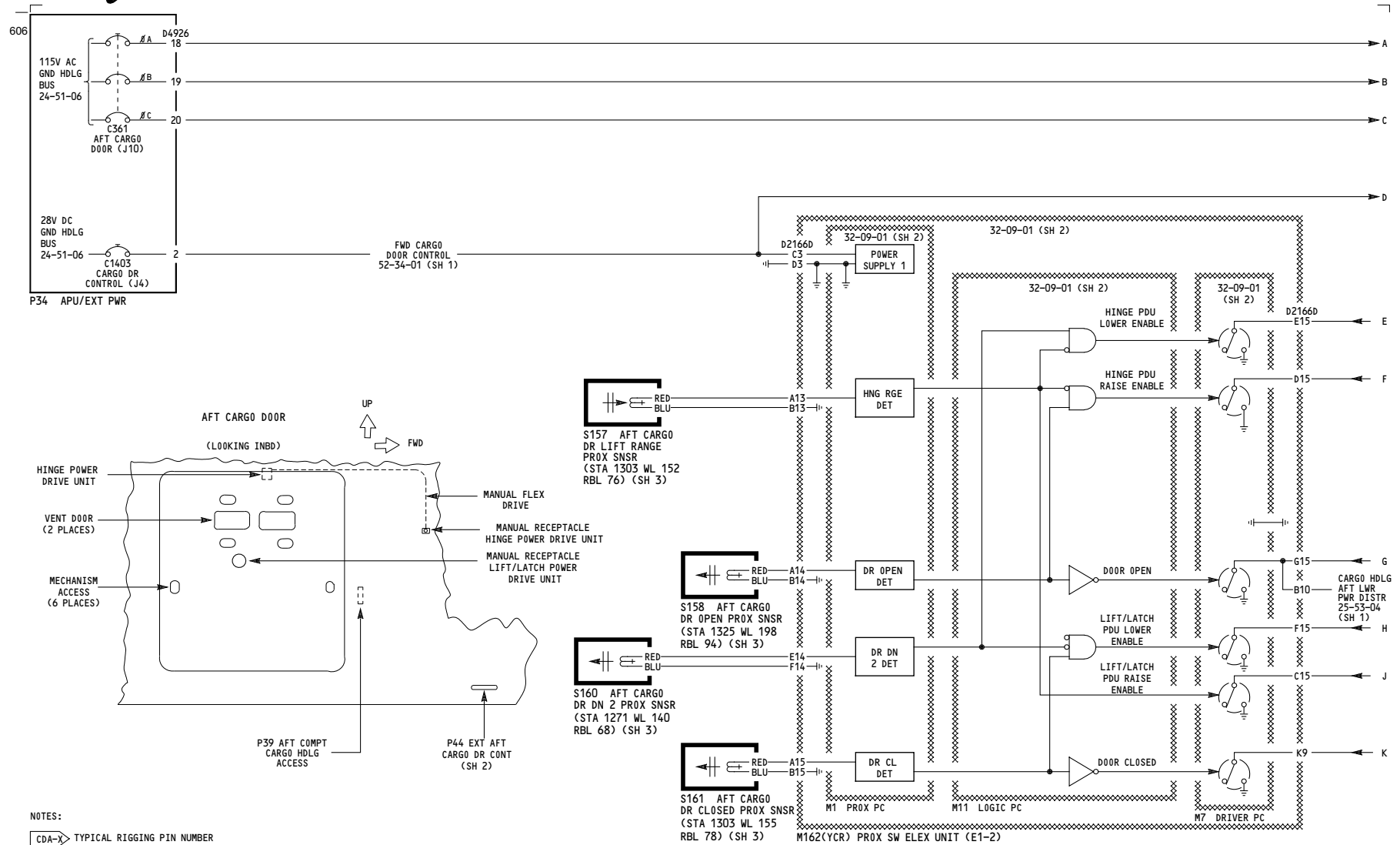
050-099

## AFT CARGO DOOR CONTROL

D280T232

**52-35-01**

Schem 1  
Page 101  
Sheet 2  
Jan 21/2005



150-199, 275-299

## AFT CARGO DOOR CONTROL

D280T232

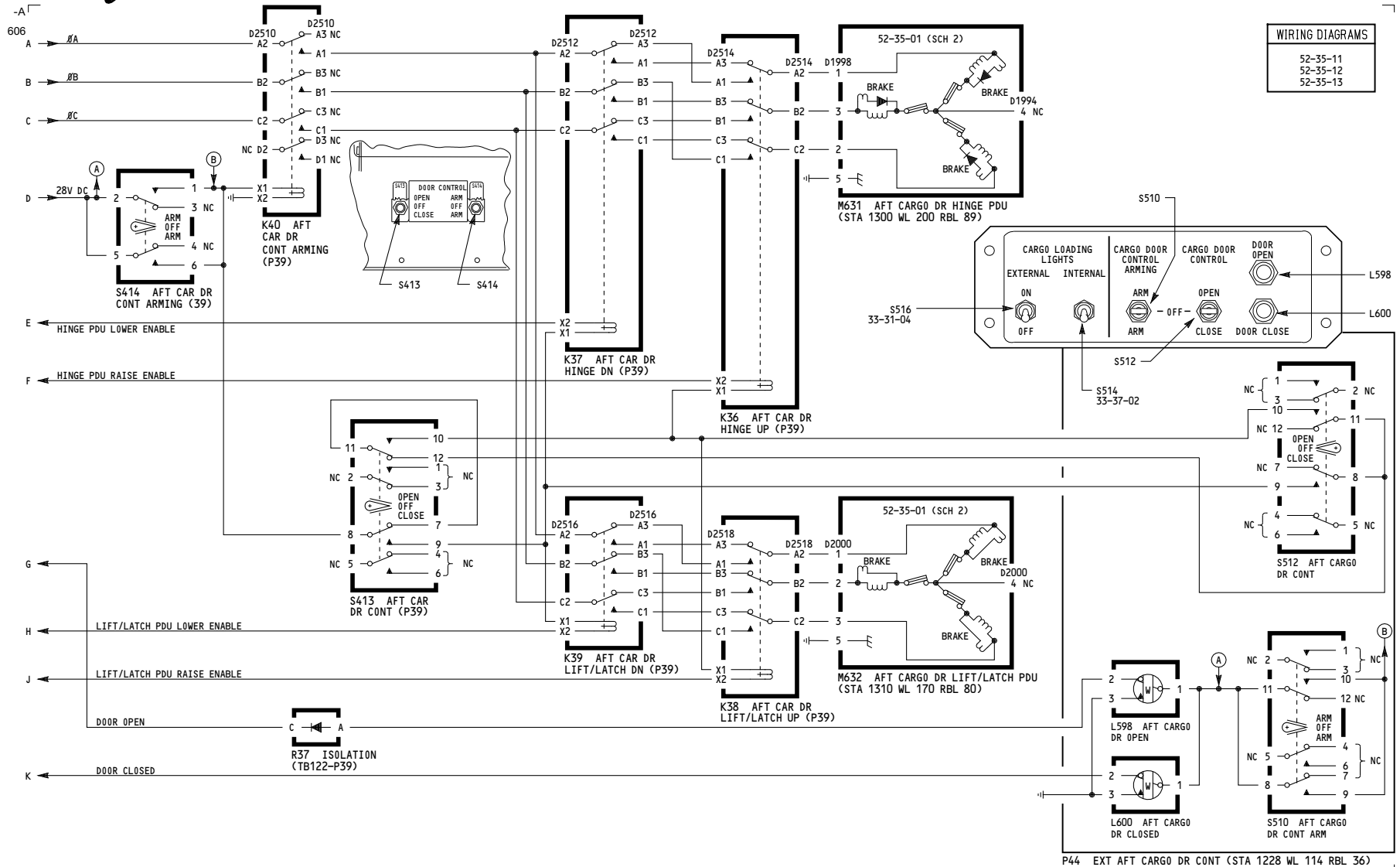
### 52-35-01

Schem 1

Page 102

Sheet 1

Jan 21/2005



150-199, 275-299

## AFT CARGO DOOR CONTROL

D280T232

### 52-35-01

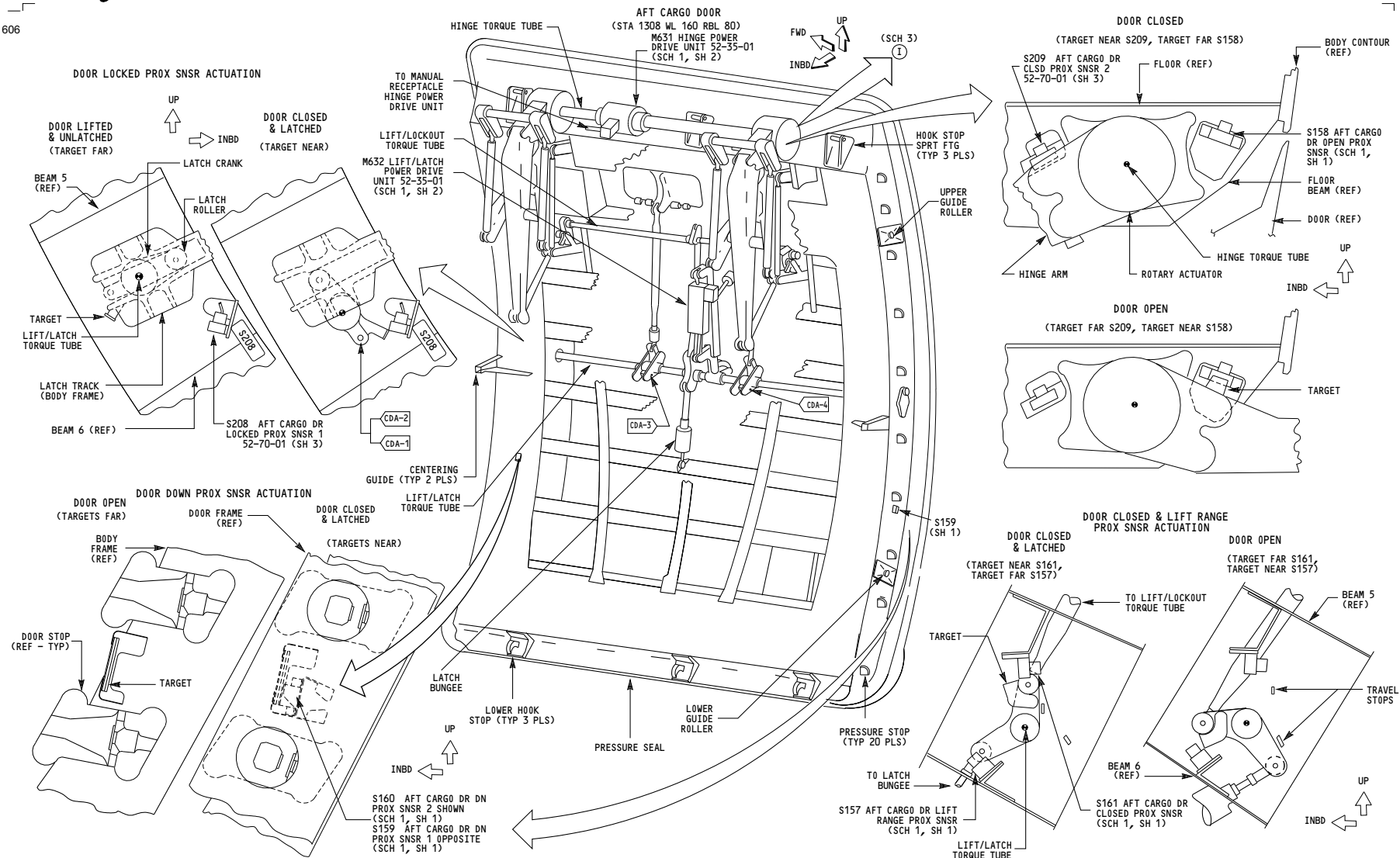
Schem 1

Page 102

Sheet 2

Jan 21/2005

606



050-099

**AFT CARGO  
DOOR CONTROL**

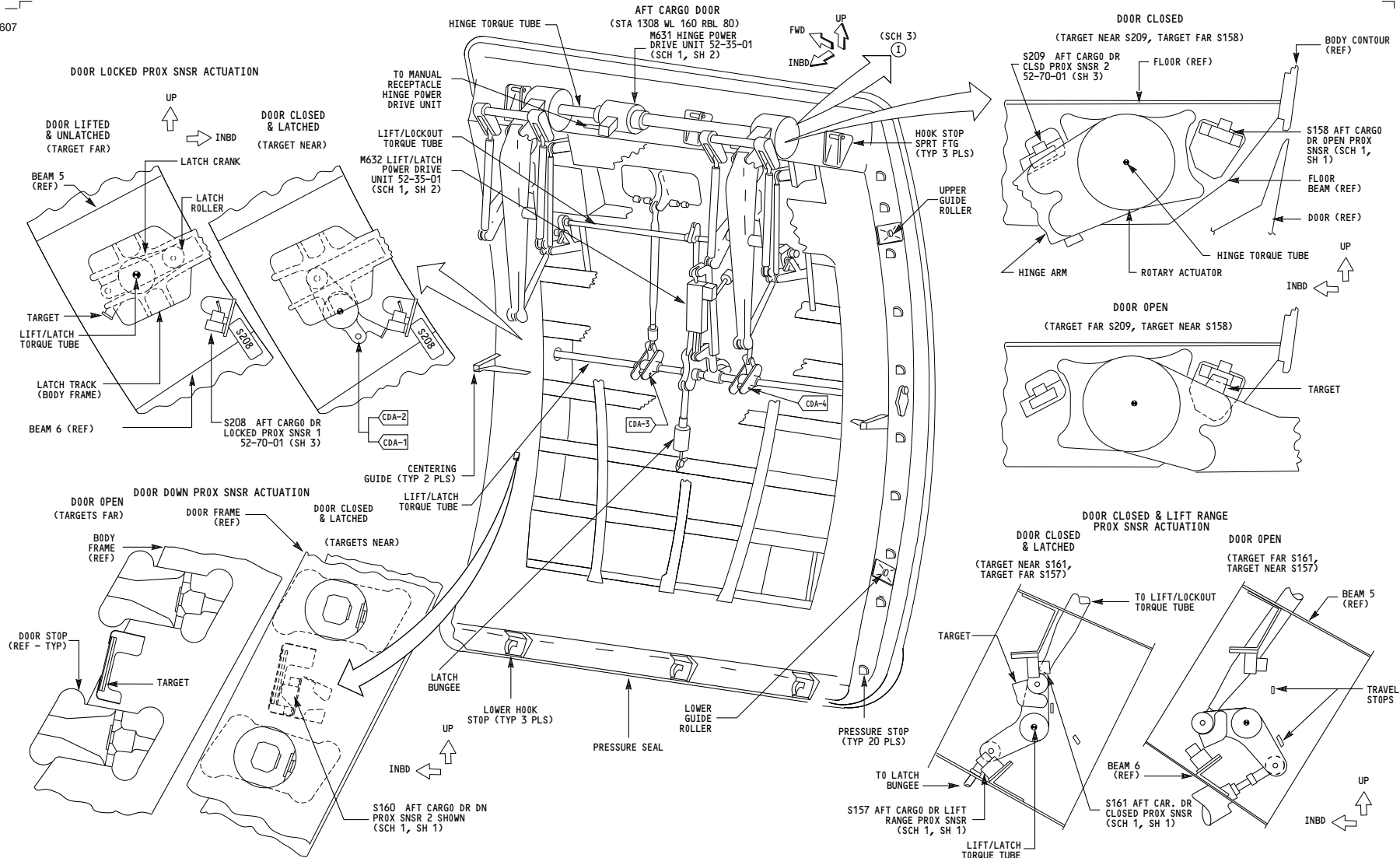
D280T232

**52-35-01**

Schem 2  
Page 101

Jan 21/2005

607



150-199, 275-299

**AFT CARGO  
DOOR CONTROL**

D280T232

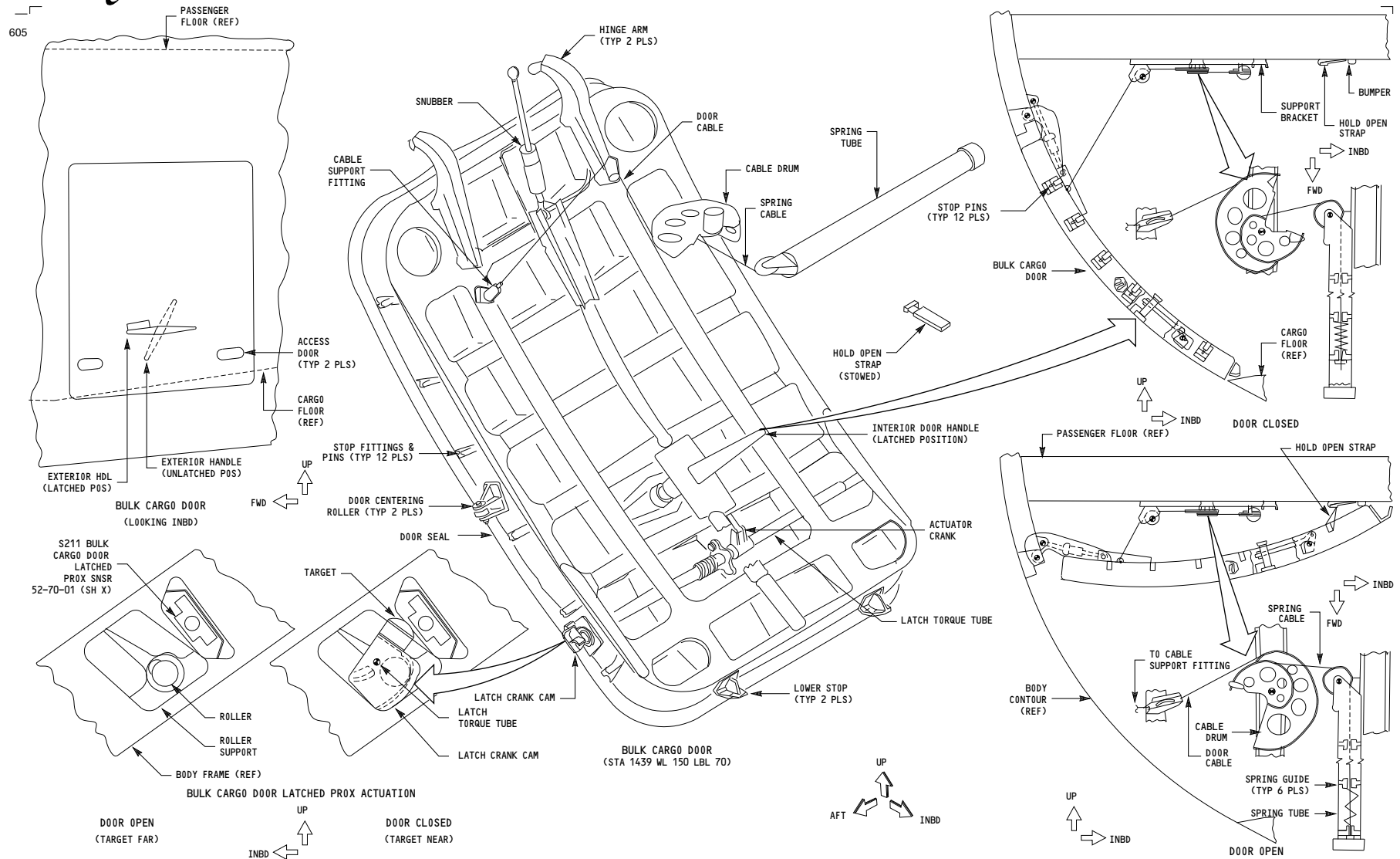
**52-35-01**

Schem 2  
Page 102

Jan 21/2005







ALL

**BULK CARGO DOOR**

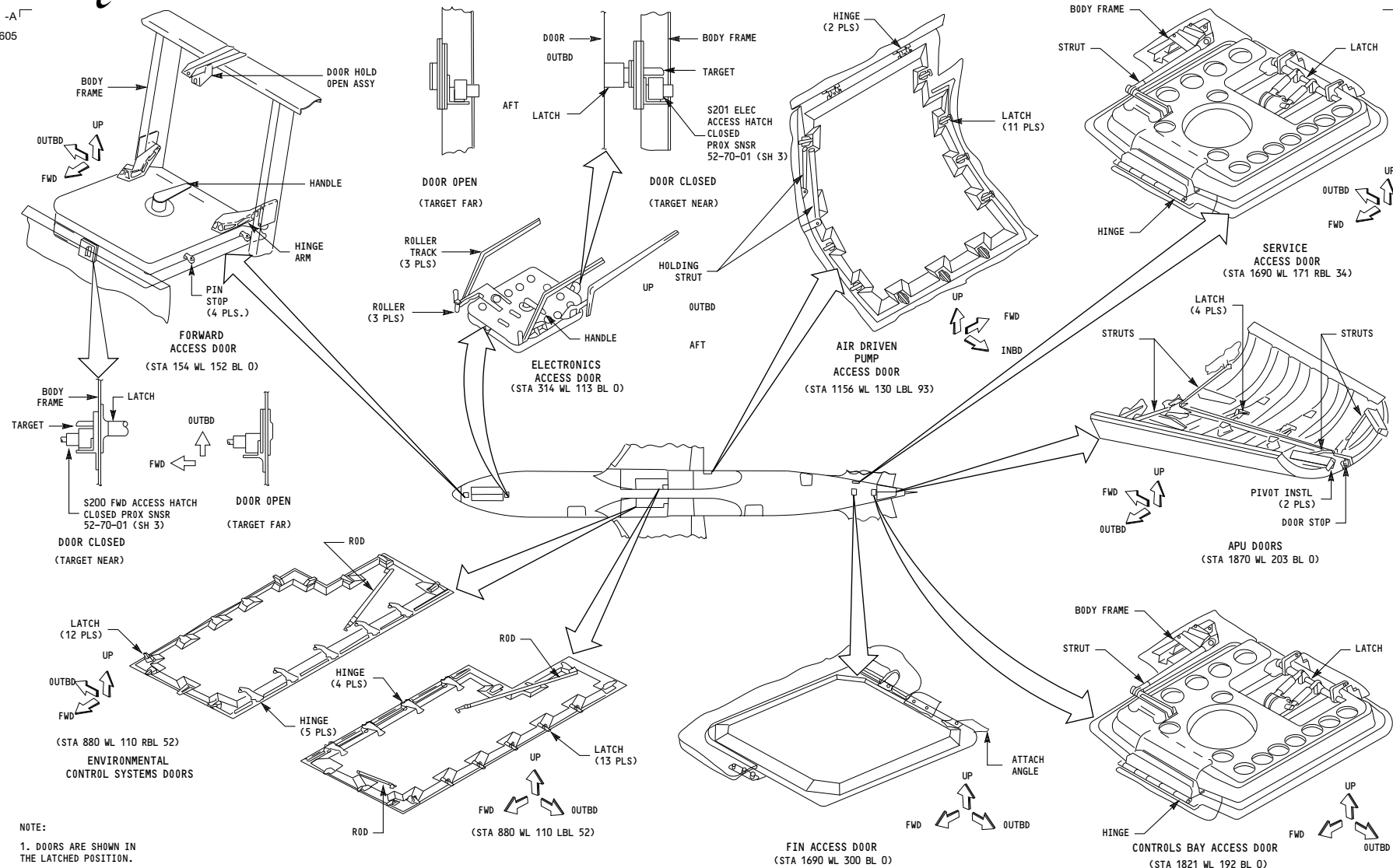
D280T232

**52-36-01**

Page 101

Jan 21/2005

-A  
605



ALL

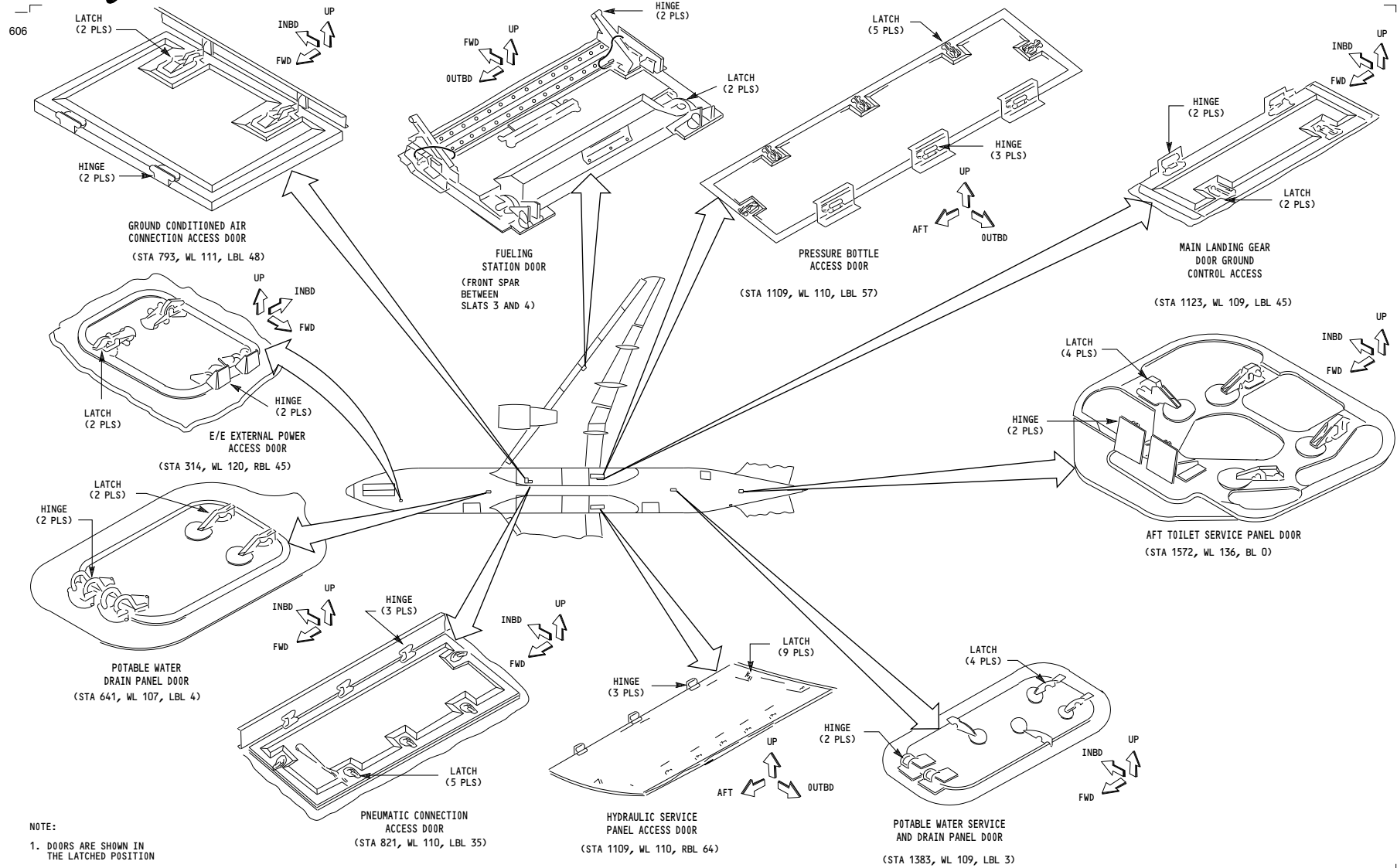
**EQUIPMENT COMPARTMENT  
EXTERIOR DOORS**

D280T232

**52-48-01**

Page 101

Jan 21/2005



ALL

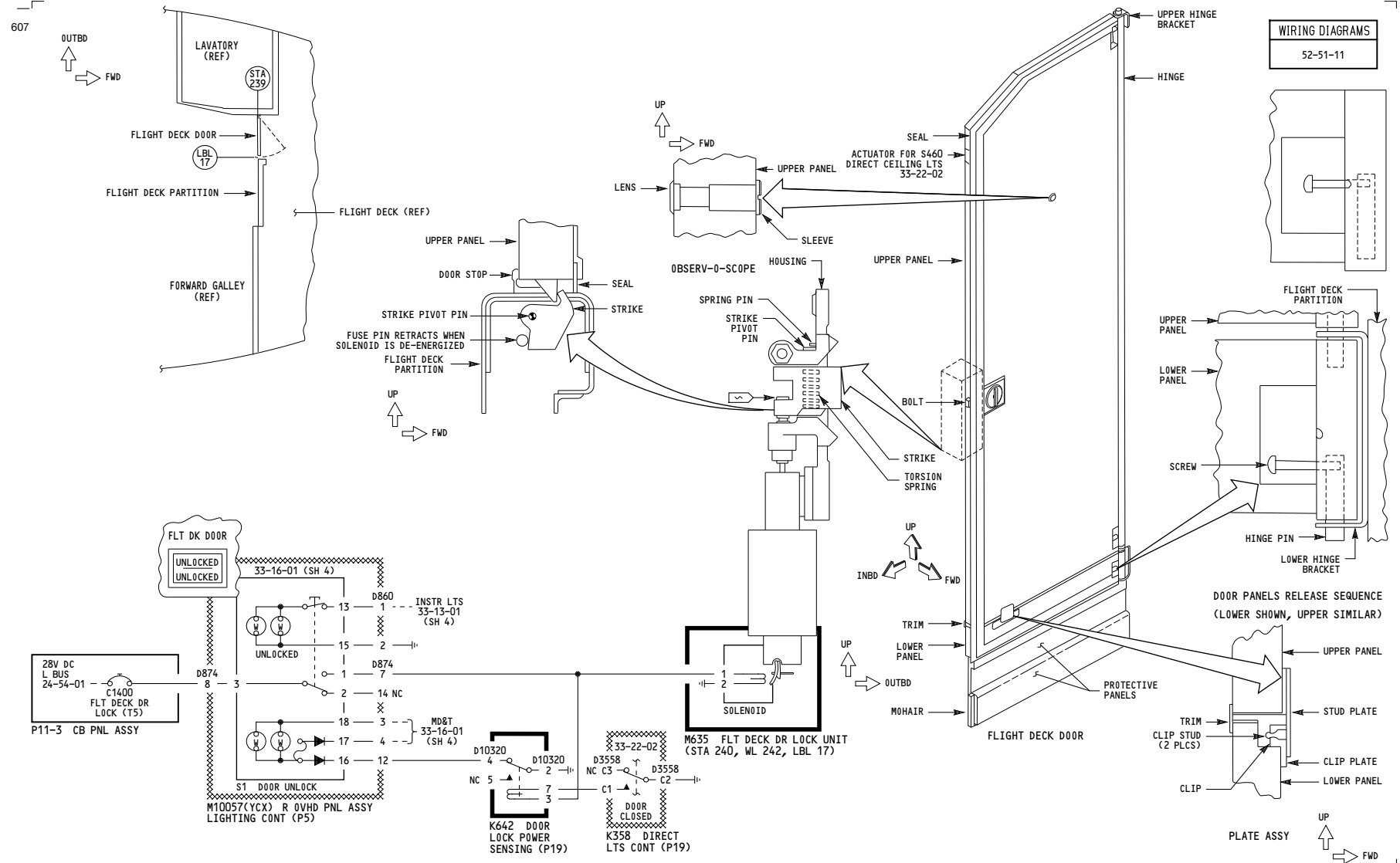
**EXTERIOR SERVICE DOORS**

D280T232

**52-49-01**

Page 101

Jan 21/2005



050-099, 151-152, 154, 156, 162-199, 275

## FLIGHT DECK DOOR

D280T232

52-51-01

Page 101

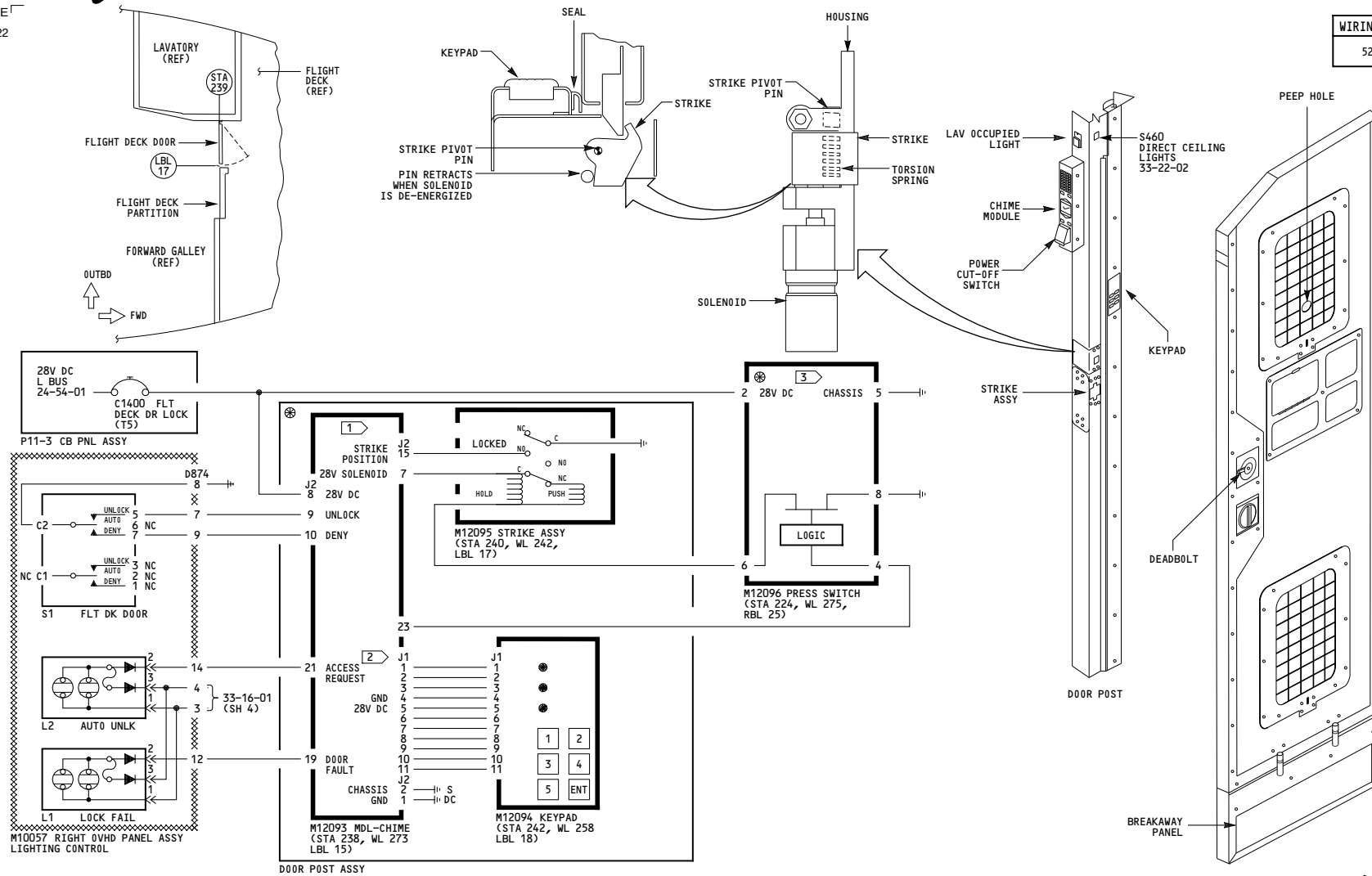
Jan 21/2005



# 767-200/300 SYSTEM SCHEMATIC MANUAL

-E-  
622

WIRING DIAGRAMS  
52-51-11



## NOTES:

1 WIRE ASSY RM3420230005900E86 2 WIRE ASSY RM3420110005900E47 3 WIRE ASSY MN2110091614100HT8

050-051, 155, 157, 276-280

FLIGHT DECK DOOR

Incorporates  
25-0325

D280T232

52-51-01

Page 101.1

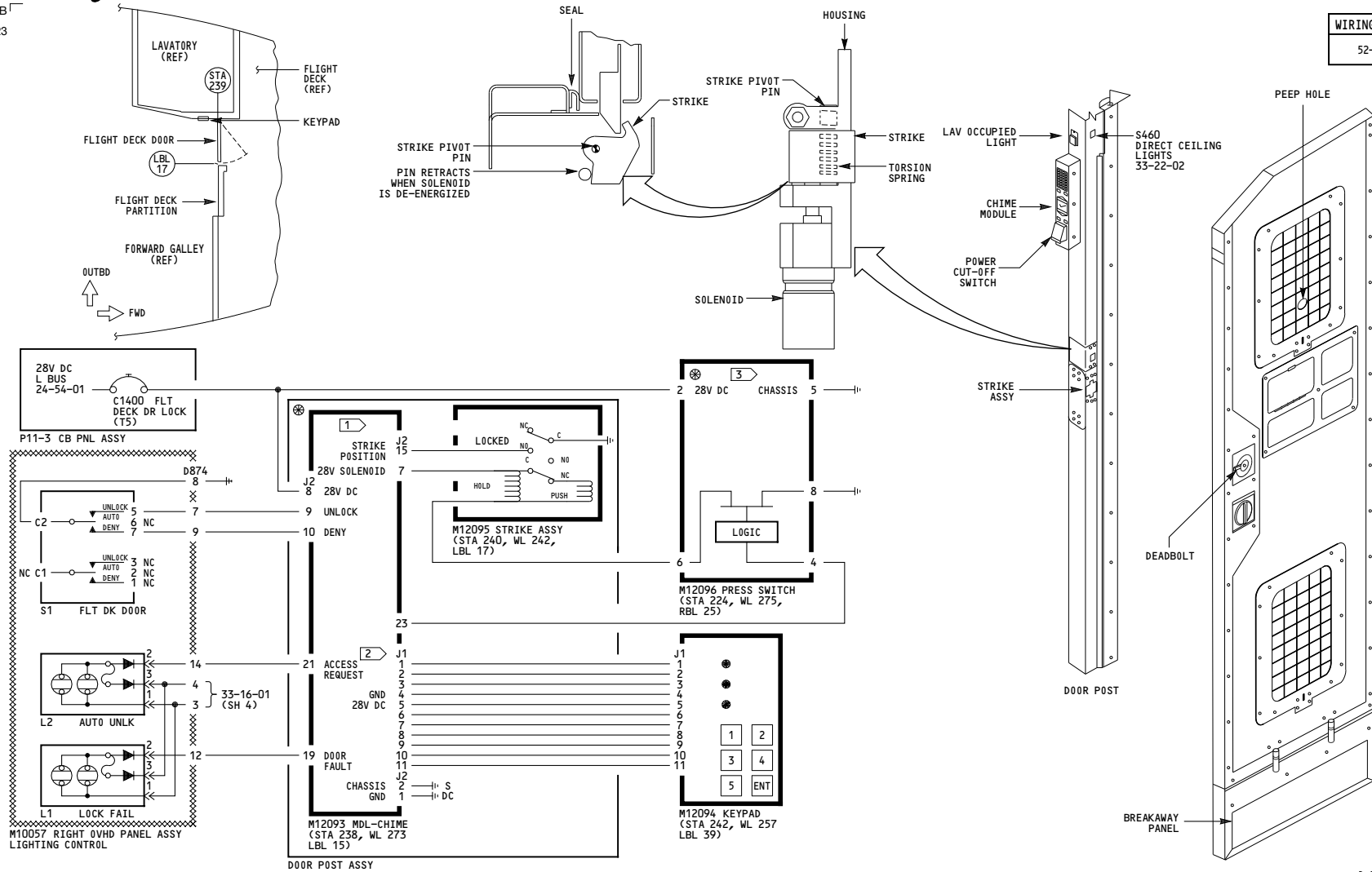
Feb 06/2009



# 767-200/300 SYSTEM SCHEMATIC MANUAL

-B  
623

WIRING DIAGRAMS  
52-51-11



## NOTES:

1 WIRE ASSY RM3420230005900E86 2 WIRE ASSY RM3420110005900E85 3 WIRE ASSY MN2110091614100HT8

151-152, 275

FLIGHT DECK DOOR

Incorporates  
25-0332

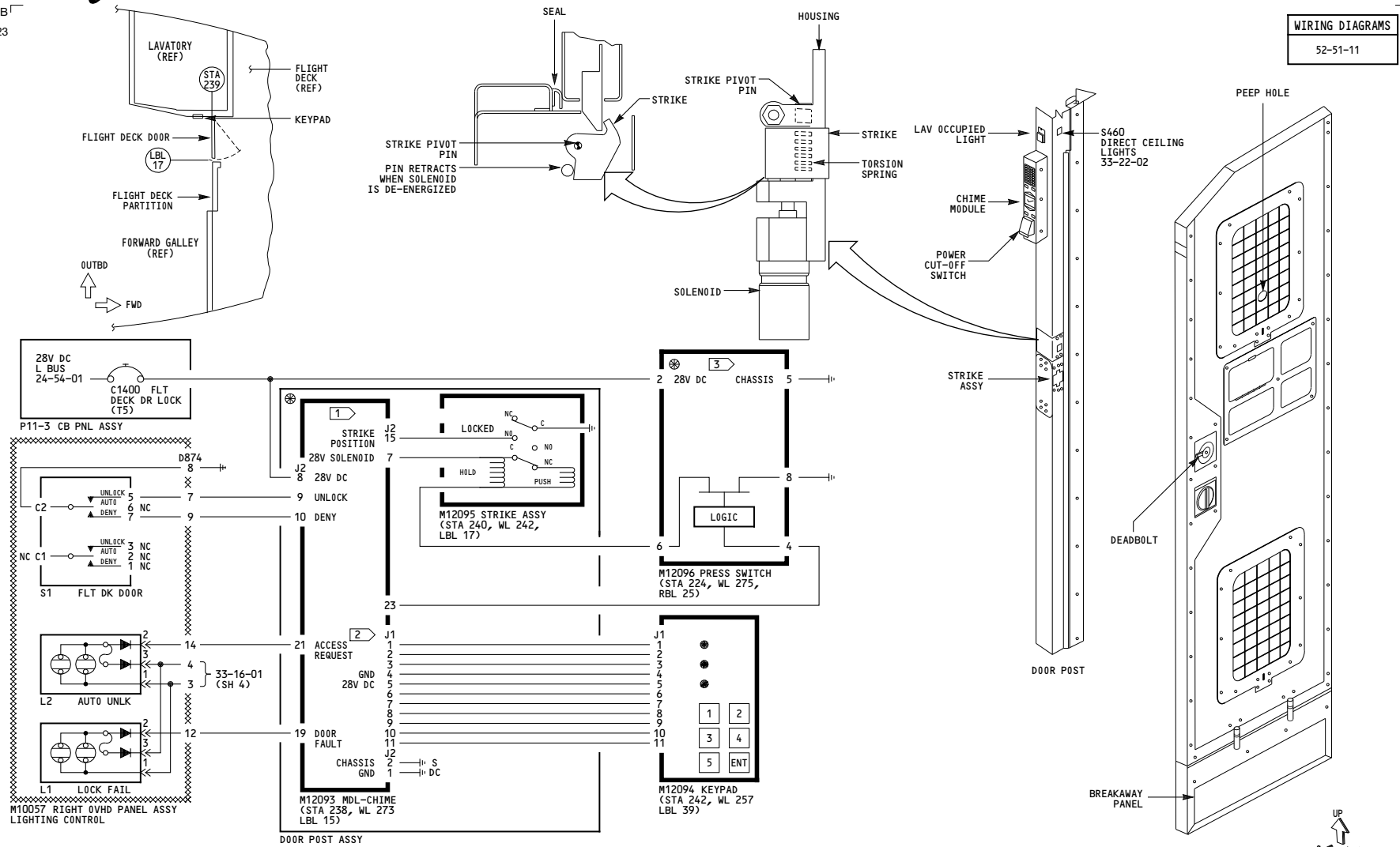
D280T232

52-51-01

Page 101.2

Feb 06/2009

-B  
623



**NOTES:**

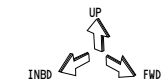
1 WIRE ASSY RM3420230005900E86 2 WIRE ASSY RM3420110005900E85 3 WIRE ASSY MN2110091614100HT8

154

**FLIGHT DECK DOOR**

Incorporates  
25-0332 R02

D280T232



**52-51-01**

Page 101.3

Feb 06/2009

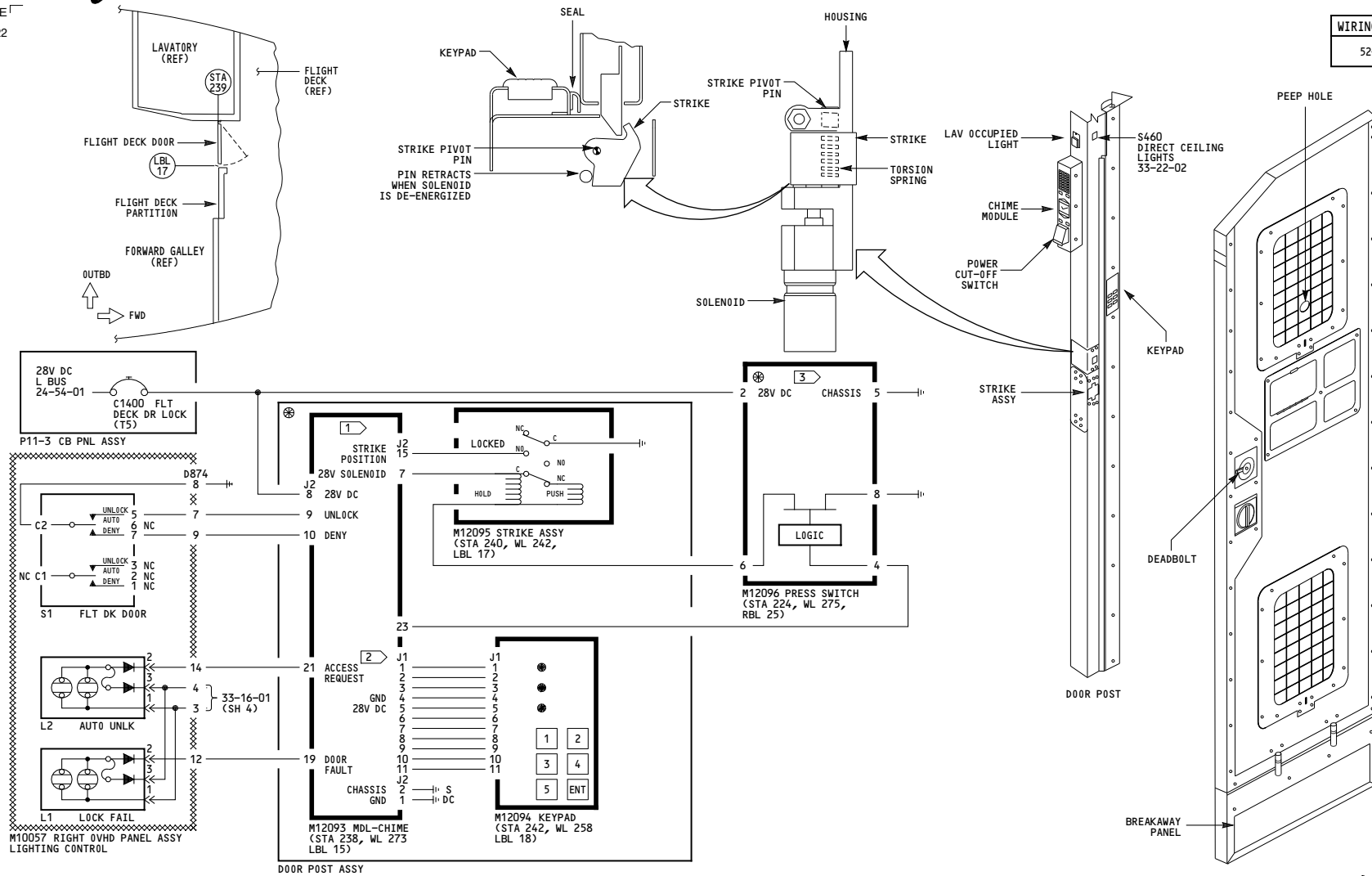




# 767-200/300 SYSTEM SCHEMATIC MANUAL

-E-  
622

WIRING DIAGRAMS  
52-51-11



## NOTES:

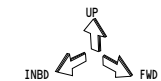
1 WIRE ASSY RM3420230005900E86 2 WIRE ASSY RM3420110005900E47 3 WIRE ASSY MN2110091614100HT8

156

FLIGHT DECK DOOR

Incorporates  
25-0325 R07

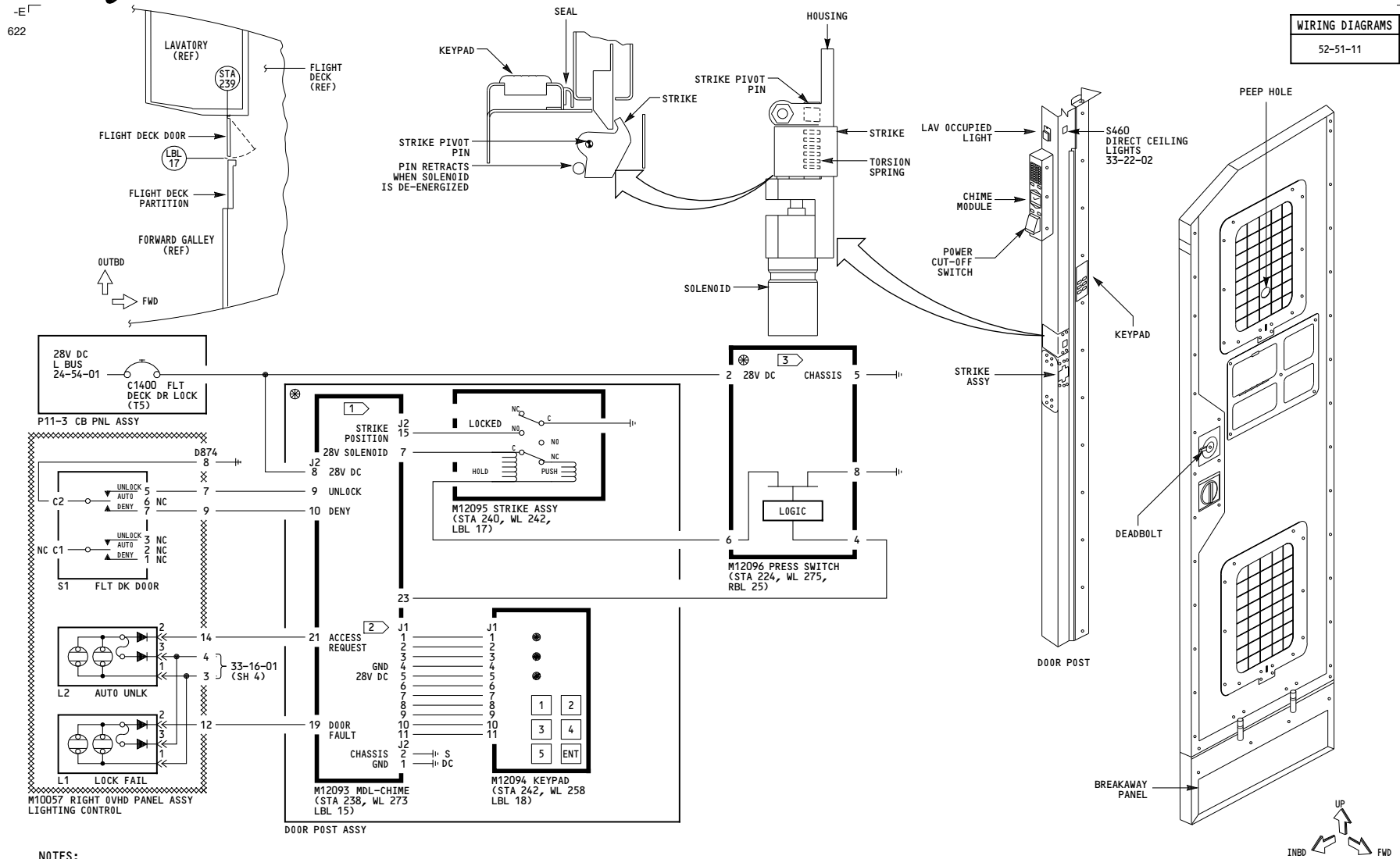
D280T232



52-51-01

Page 101.4

Feb 06/2009



NOTES:

1 WIRE ASSY RM3420230005900E86 2 WIRE ASSY RM3420110005900E47 3 WIRE ASSY MN2110091614100HT8

162

## FLIGHT DECK DOOR

Incorporates  
▶ 25-0325 R03

D280T232

**52-51-01**

Page 101.5

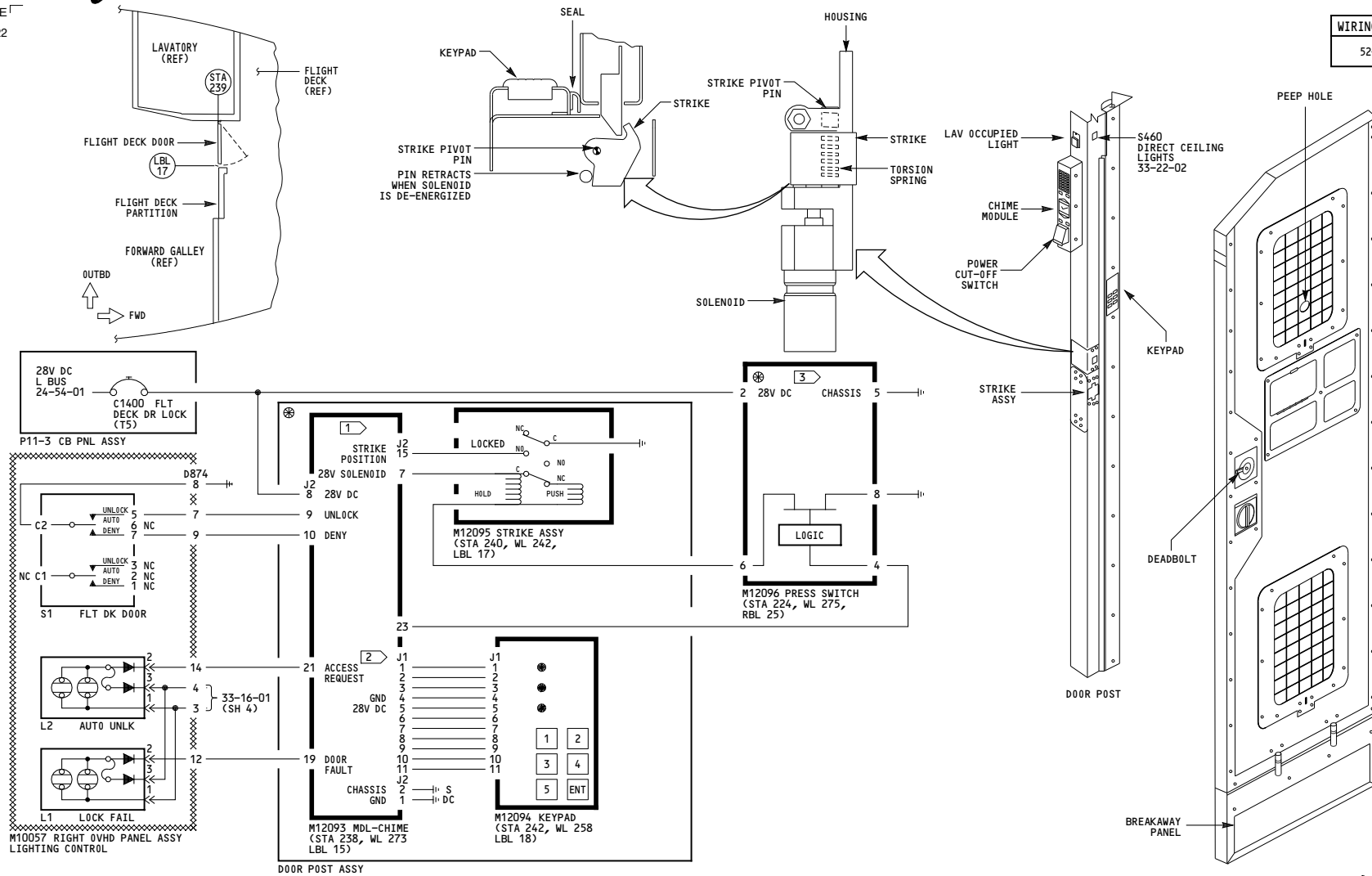
Feb 06/2009



# 767-200/300 SYSTEM SCHEMATIC MANUAL

-E  
622

WIRING DIAGRAMS  
52-51-11



## NOTES:

1 WIRE ASSY RM3420230005900E86 2 WIRE ASSY RM3420110005900E47 3 WIRE ASSY MN2110091614100HT8

163-165

FLIGHT DECK DOOR

Incorporates  
25-0325 R02

D280T232

52-51-01

Page 101.6

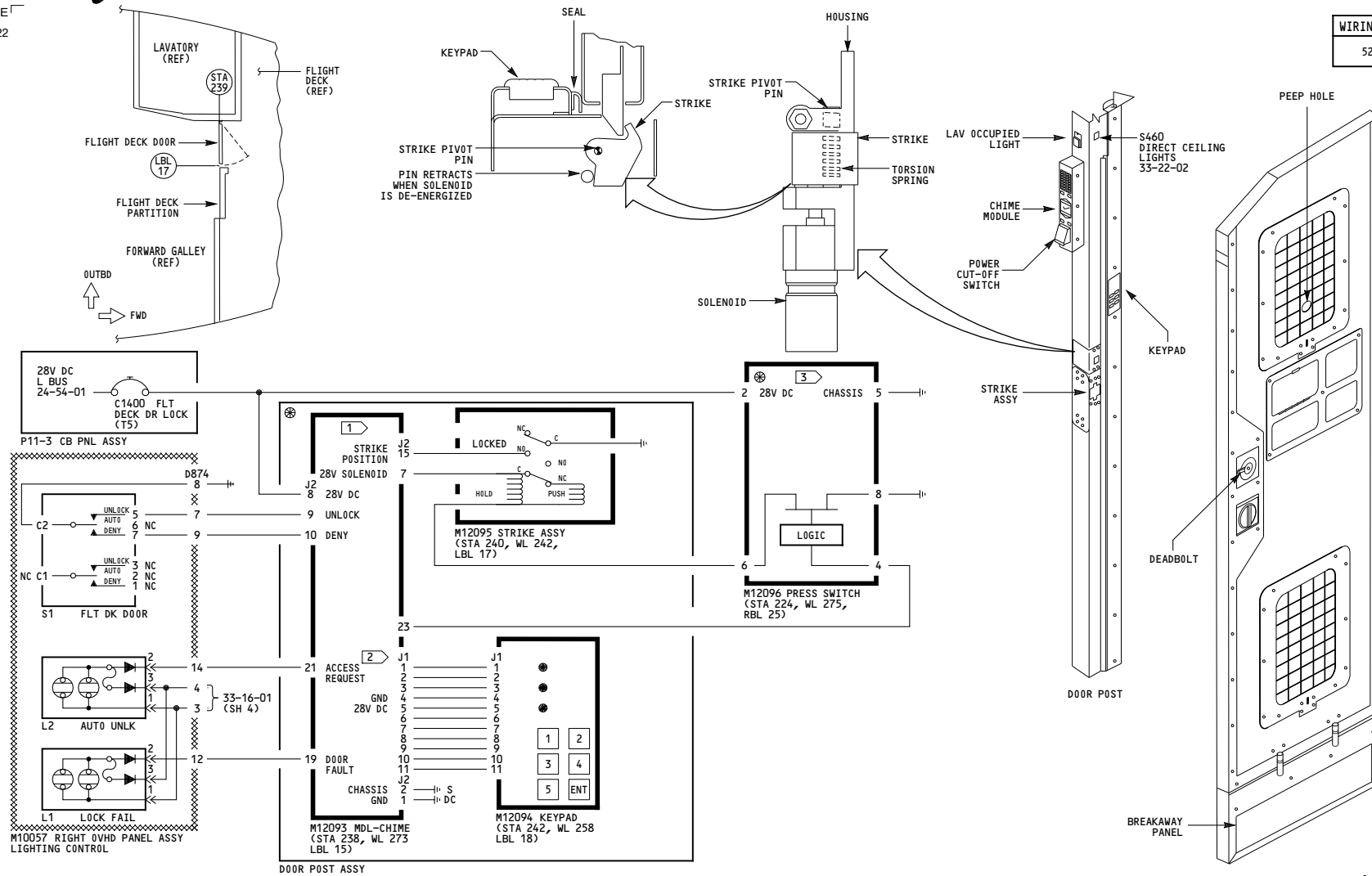
Feb 06/2009



# 767-200/300 SYSTEM SCHEMATIC MANUAL

-E-  
622

WIRING DIAGRAMS  
52-51-11



## NOTES:

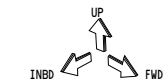
1 WIRE ASSY RM3420230005900E86 2 WIRE ASSY RM3420110005900E47 3 WIRE ASSY MN2110091614100HT8

166

FLIGHT DECK DOOR

Incorporates  
25-0325 R14

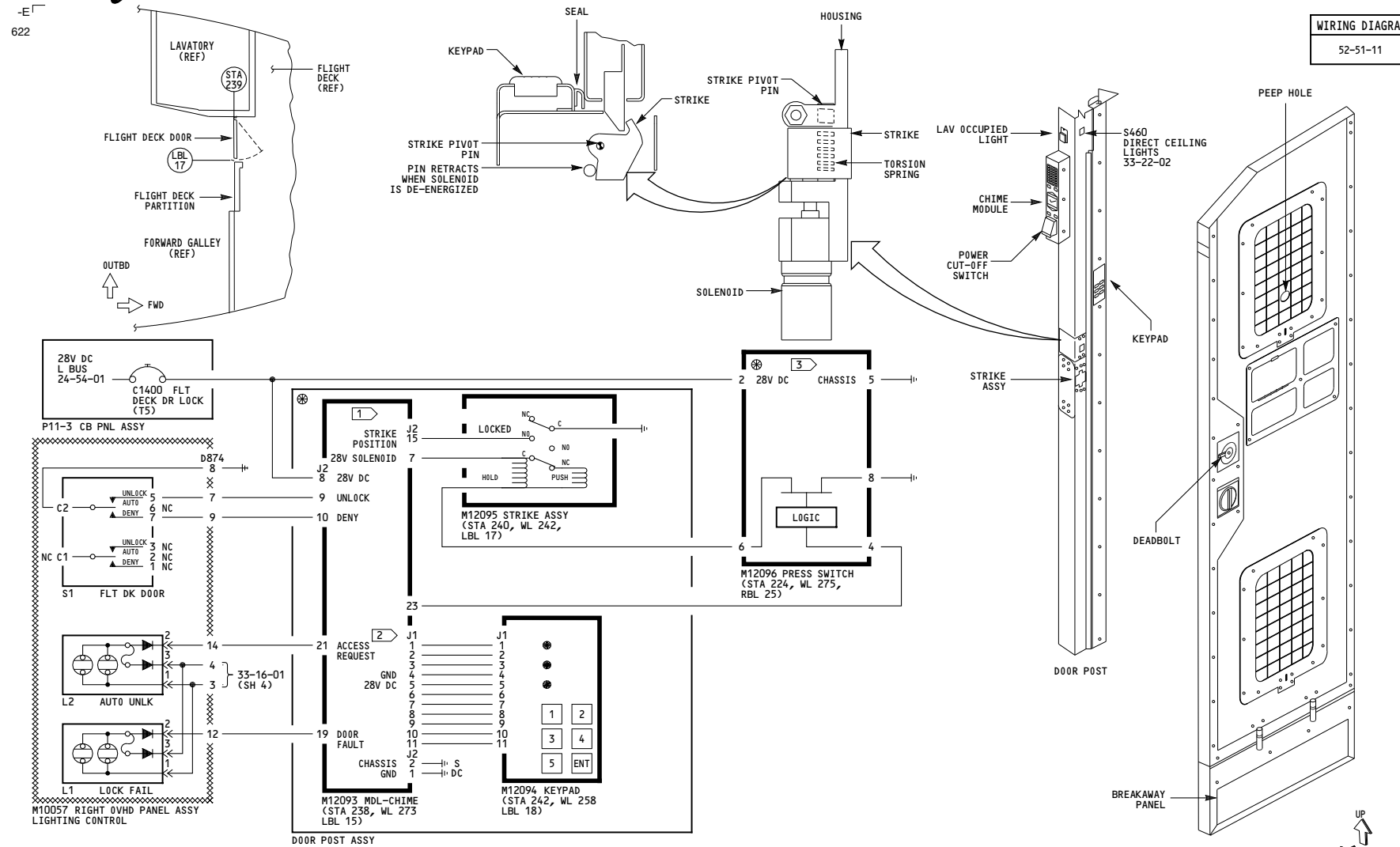
D280T232



52-51-01

Page 101.7

Feb 06/2009



NOTES:

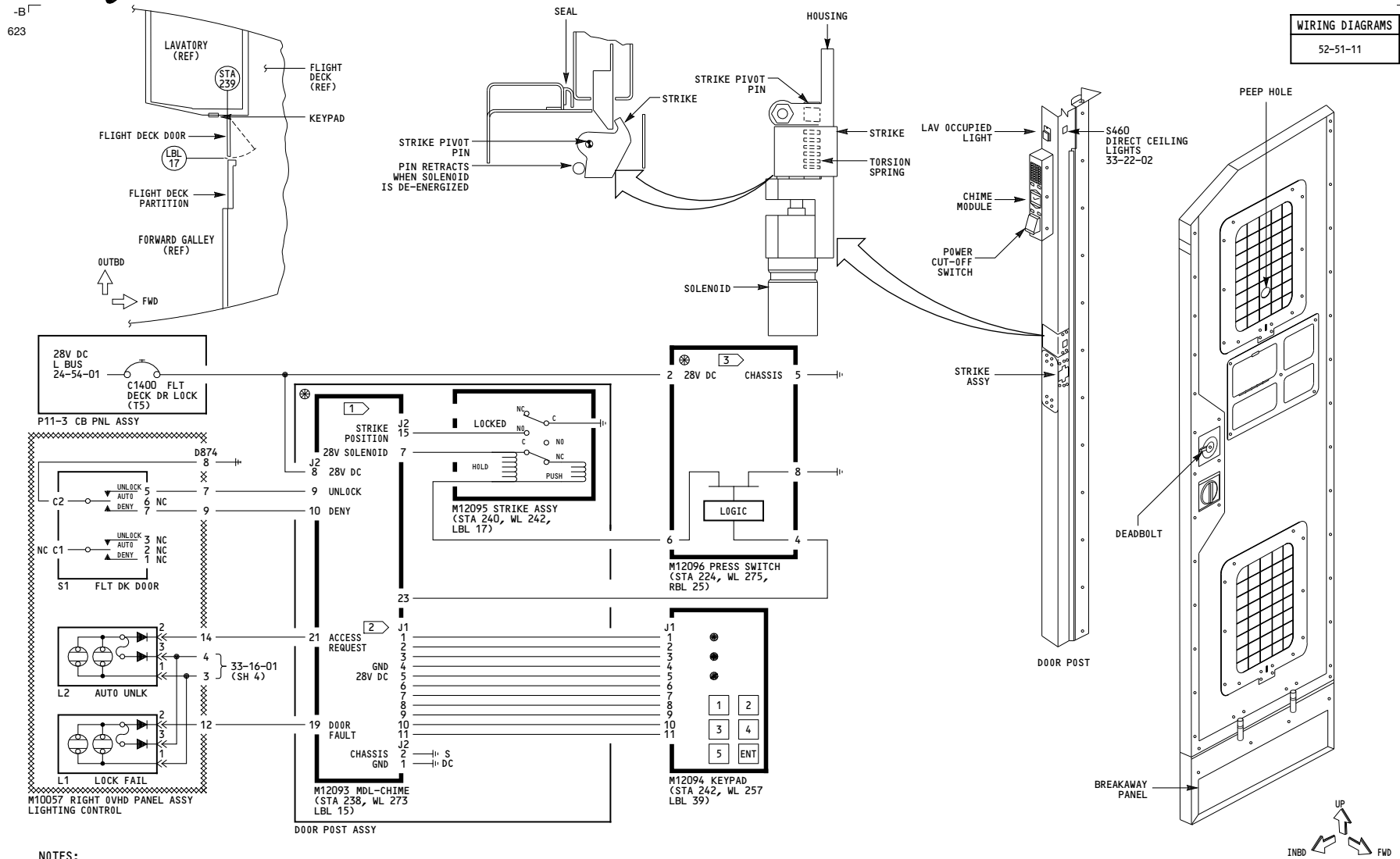
1 WIRE ASSY RM3420230005900E86 2 WIRE ASSY RM3420110005900E47 3 WIRE ASSY MN2110091614100HT8

Incorporates  
▶ 25-0325 R04

**52-51-01**

Page 101.8

Feb 06/2009



NOTES:

1 WIRE ASSY RM3420230005900E86 2 WIRE ASSY RM3420110005900E85 3 WIRE ASSY MN2110091614100HT8

150, 153

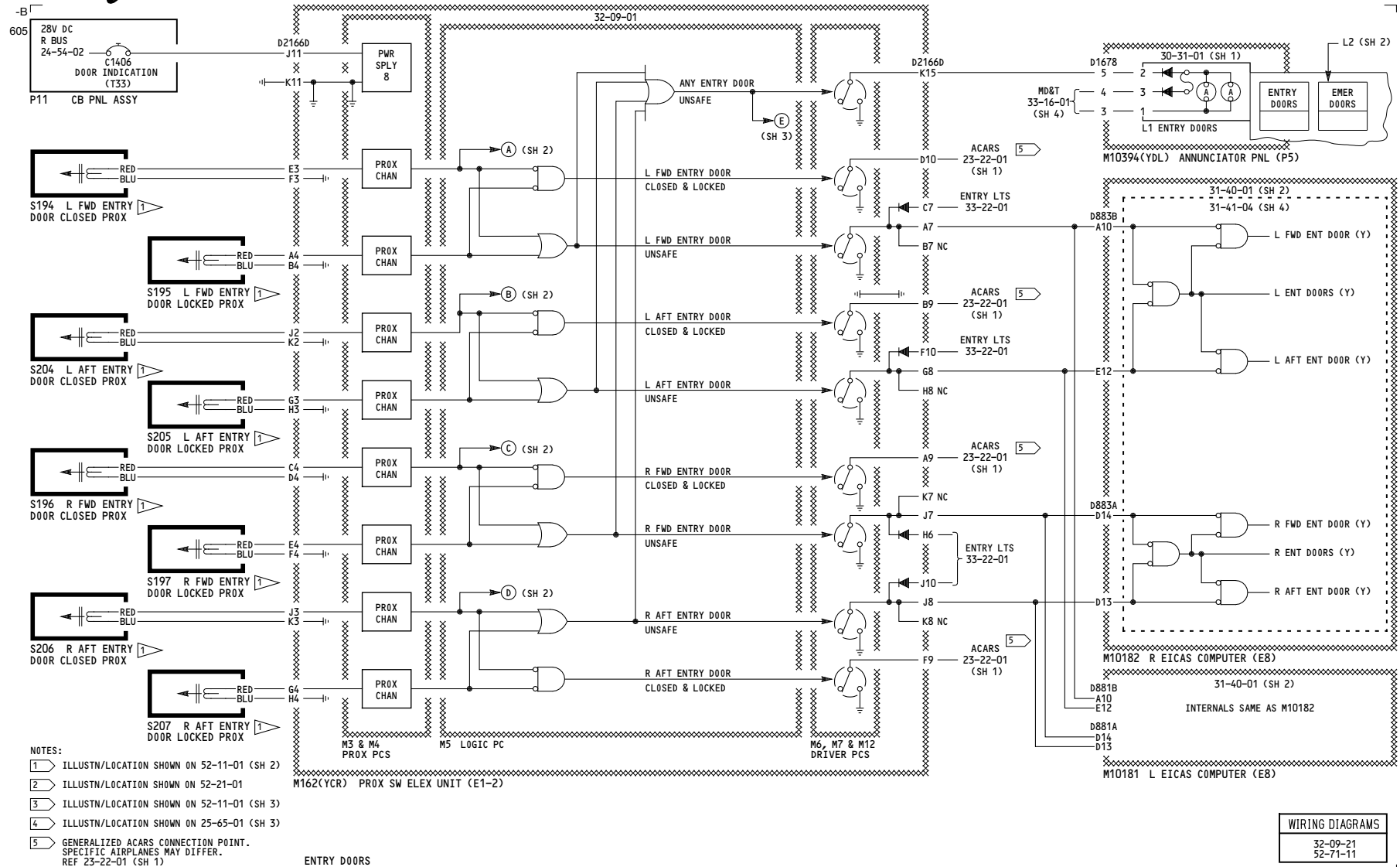
## FLIGHT DECK DOOR

D280T232

**52-51-01**

Page 102

Feb 06/2009



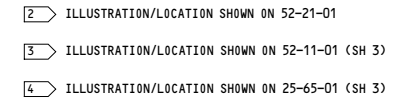
050-099

DOOR WARNING

D280T232

52-70-01

Page 101  
Sheet 1  
Mar 09/2006



## DOOR WARNING

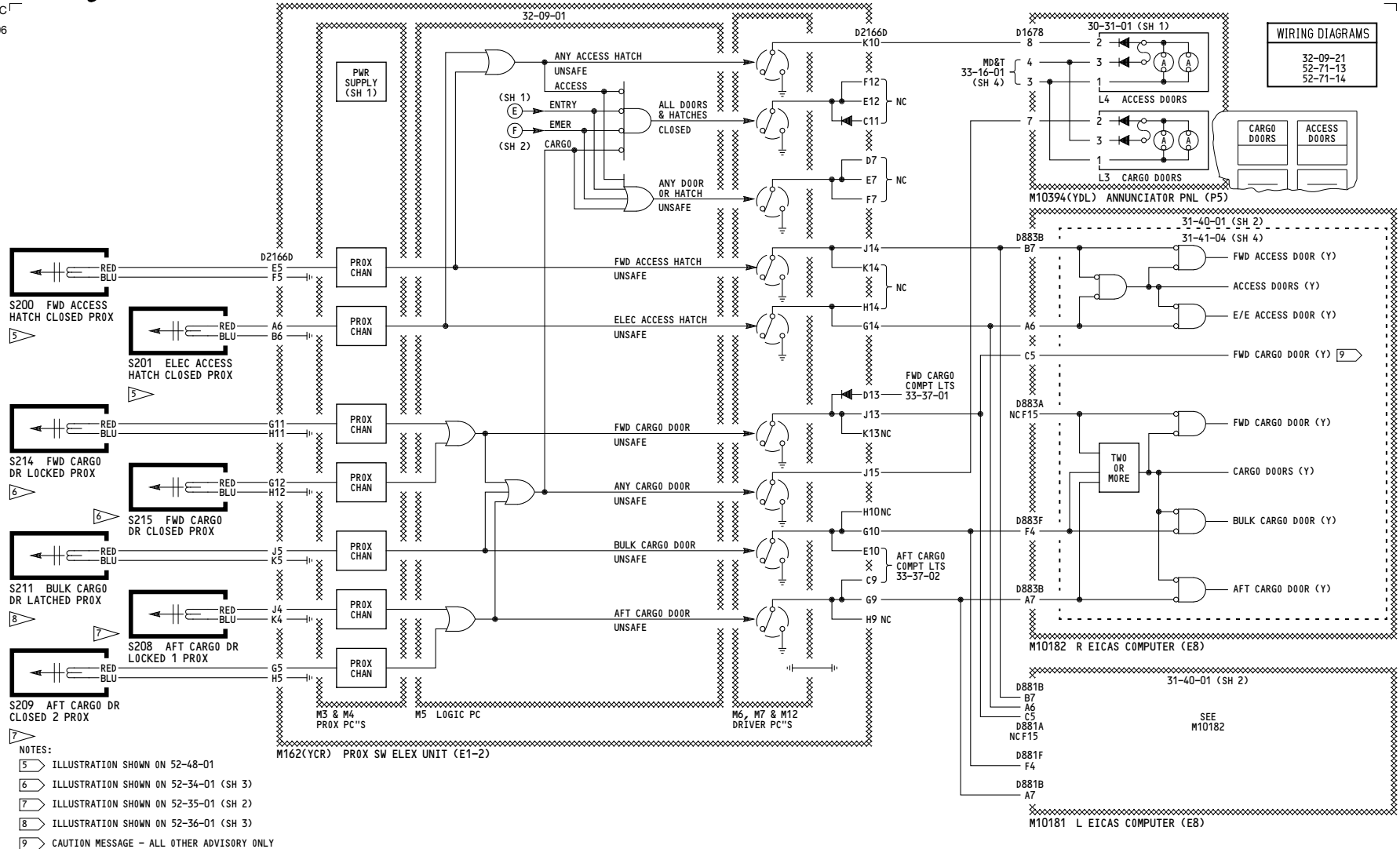
D280T232

**52-70-01**

Page 101  
Sheet 2  
Mar 09/2006



606



CARGO AND ACCESS DOORS

## DOOR WARNING

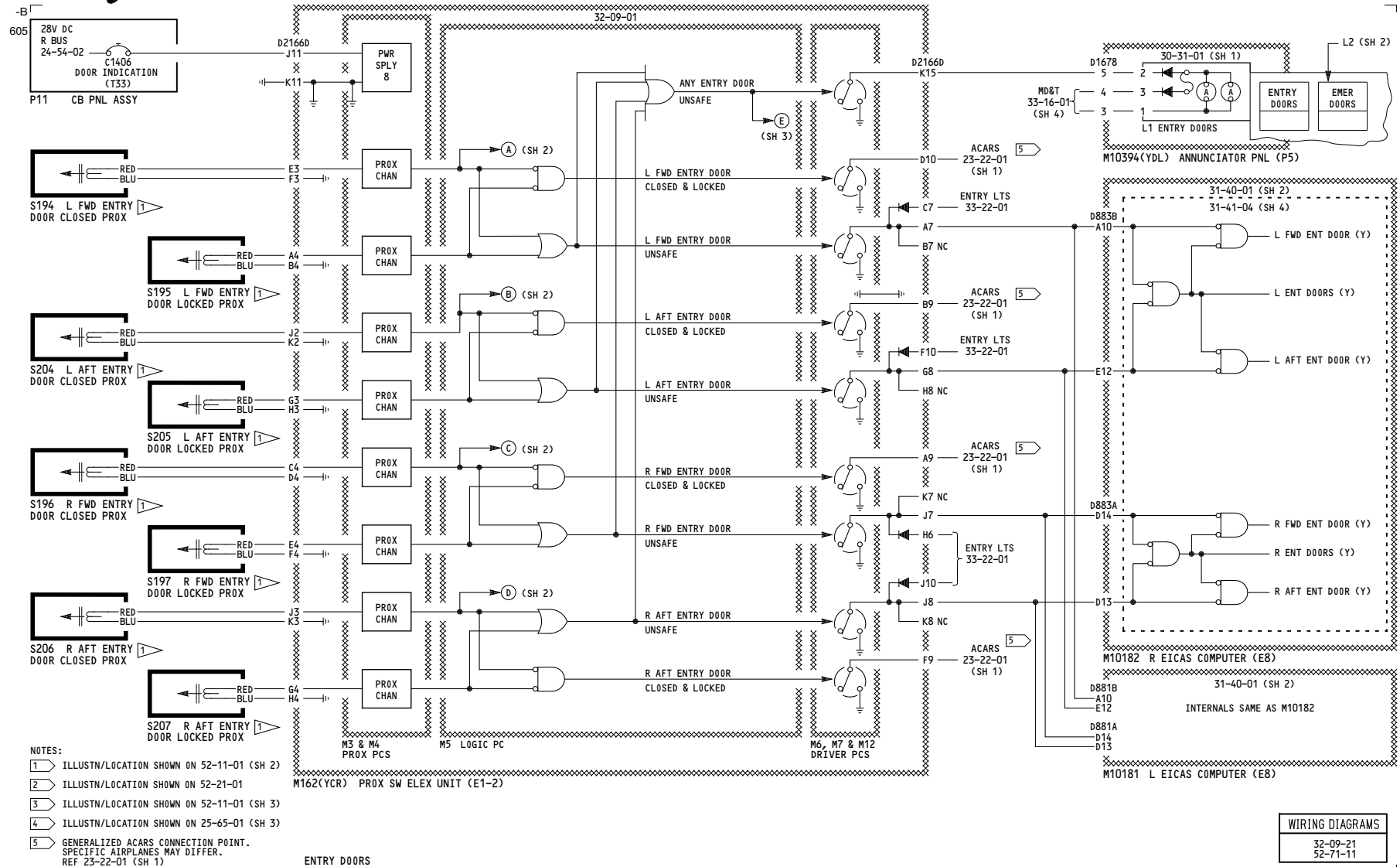
050-099

D280T232

52-70-01

Page 101  
Sheet 3  
Mar 09/2006

THIS PAGE INTENTIONALLY LEFT BLANK



150-199

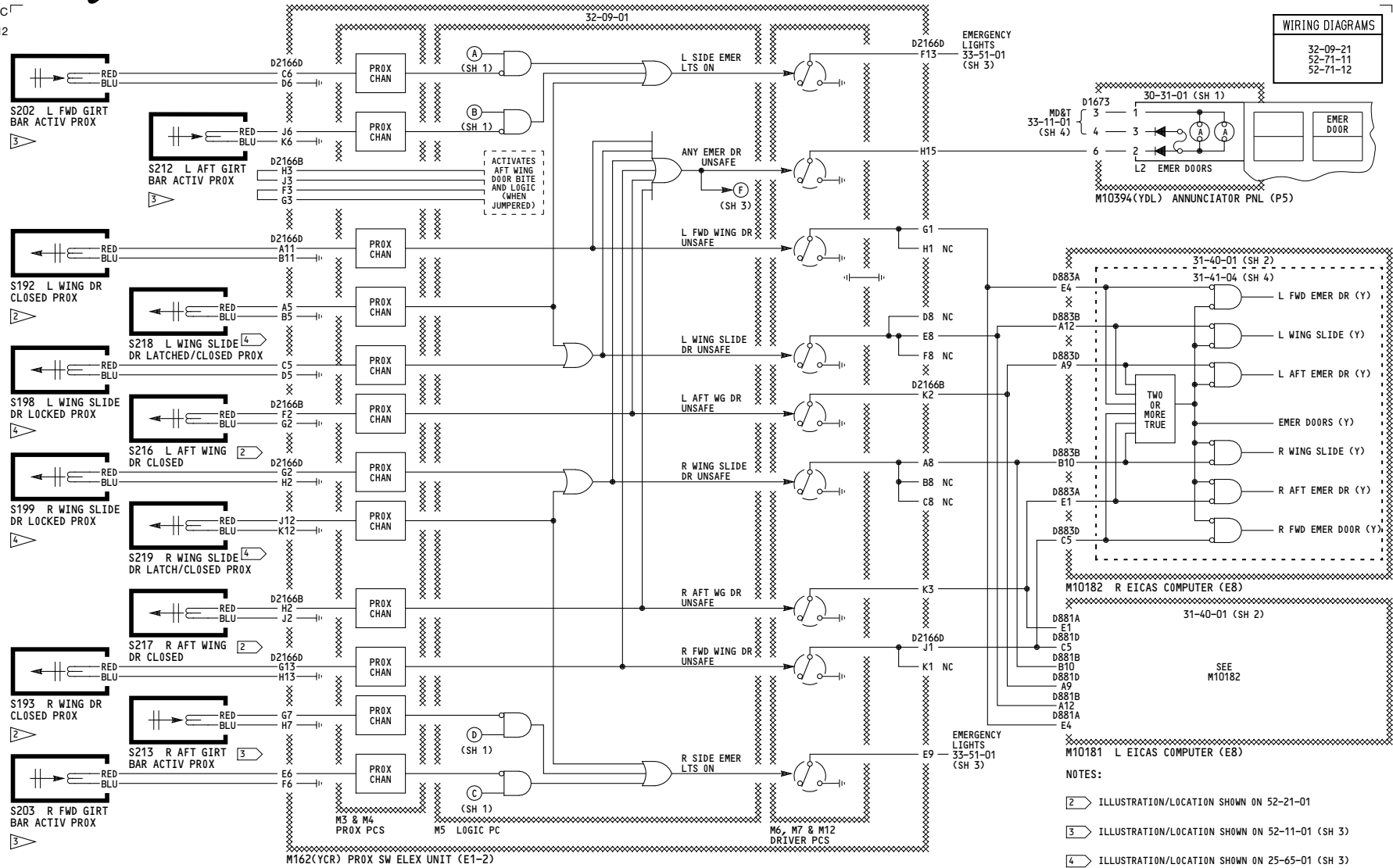
DOOR WARNING

D280T232

**52-70-01**

Page 102  
Sheet 1  
Mar 09/2006

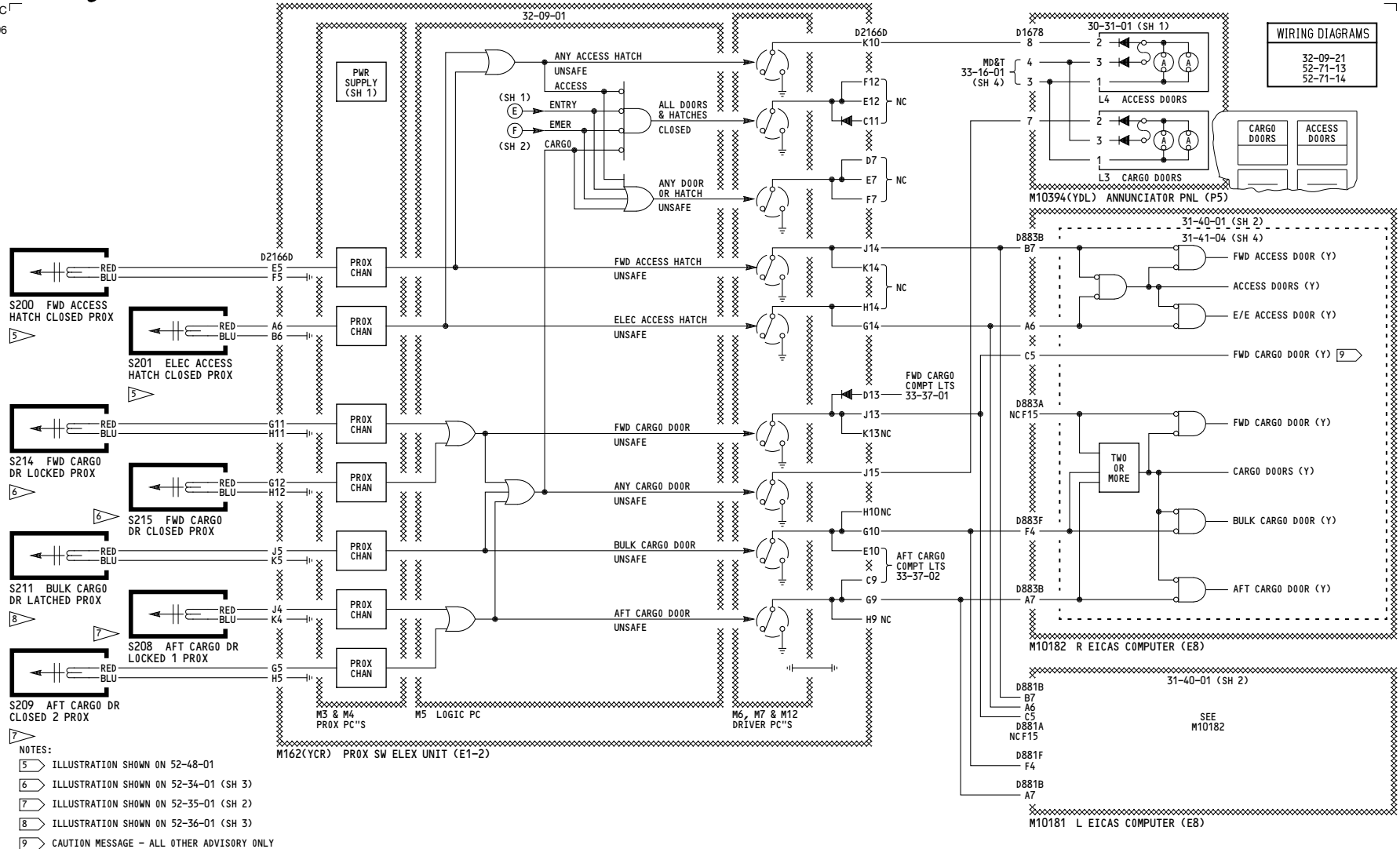
612



**52-70-01**

Page 102  
Sheet 2  
Mar 09/2006

606



52-70-01

Page 102  
Sheet 3  
Mar 09/2006

THIS PAGE INTENTIONALLY LEFT BLANK



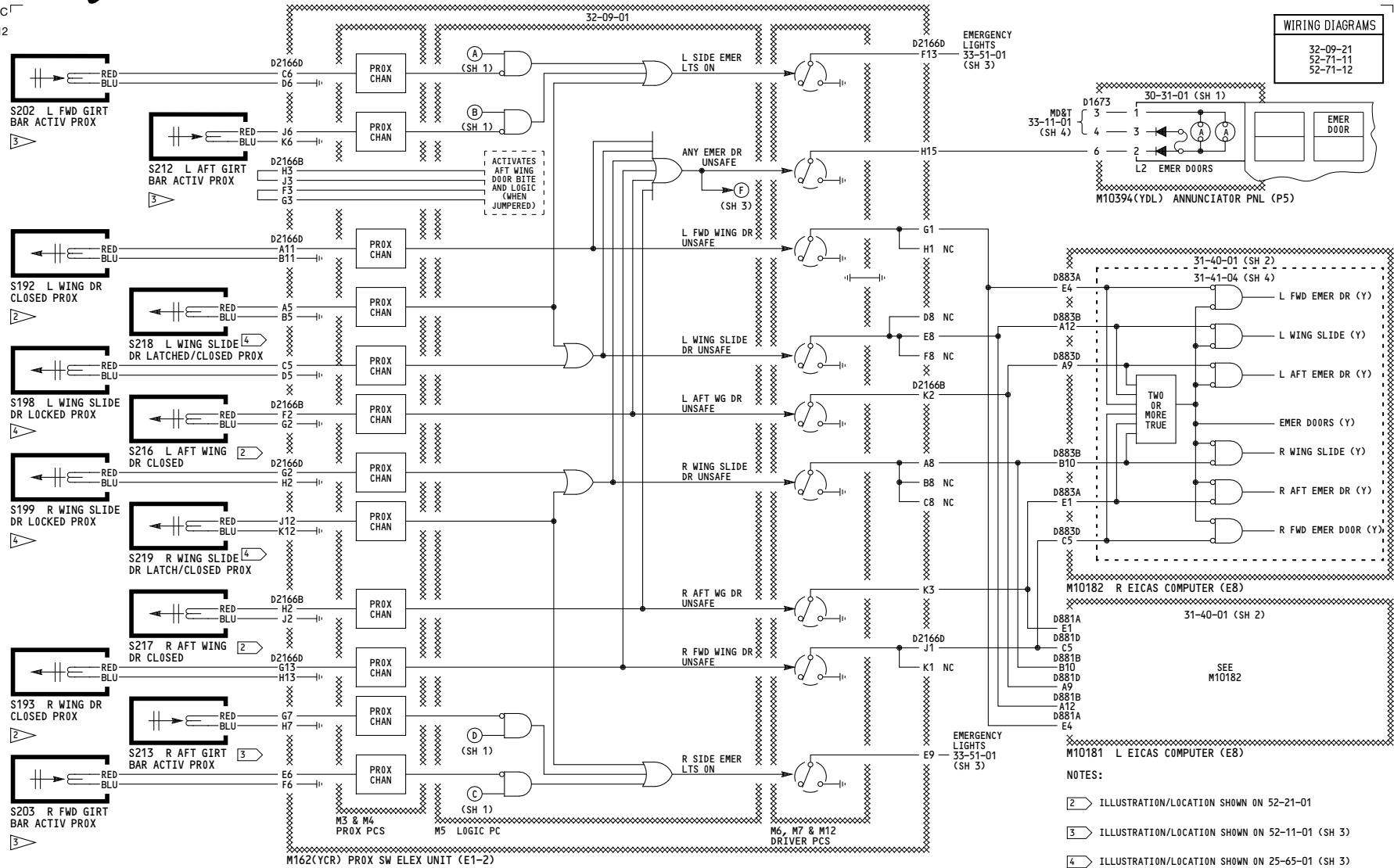
## DOOR WARNING

D280T232

## WIRING DIAGRAMS

**52-70-01**

612



275-299

## DOOR WARNING

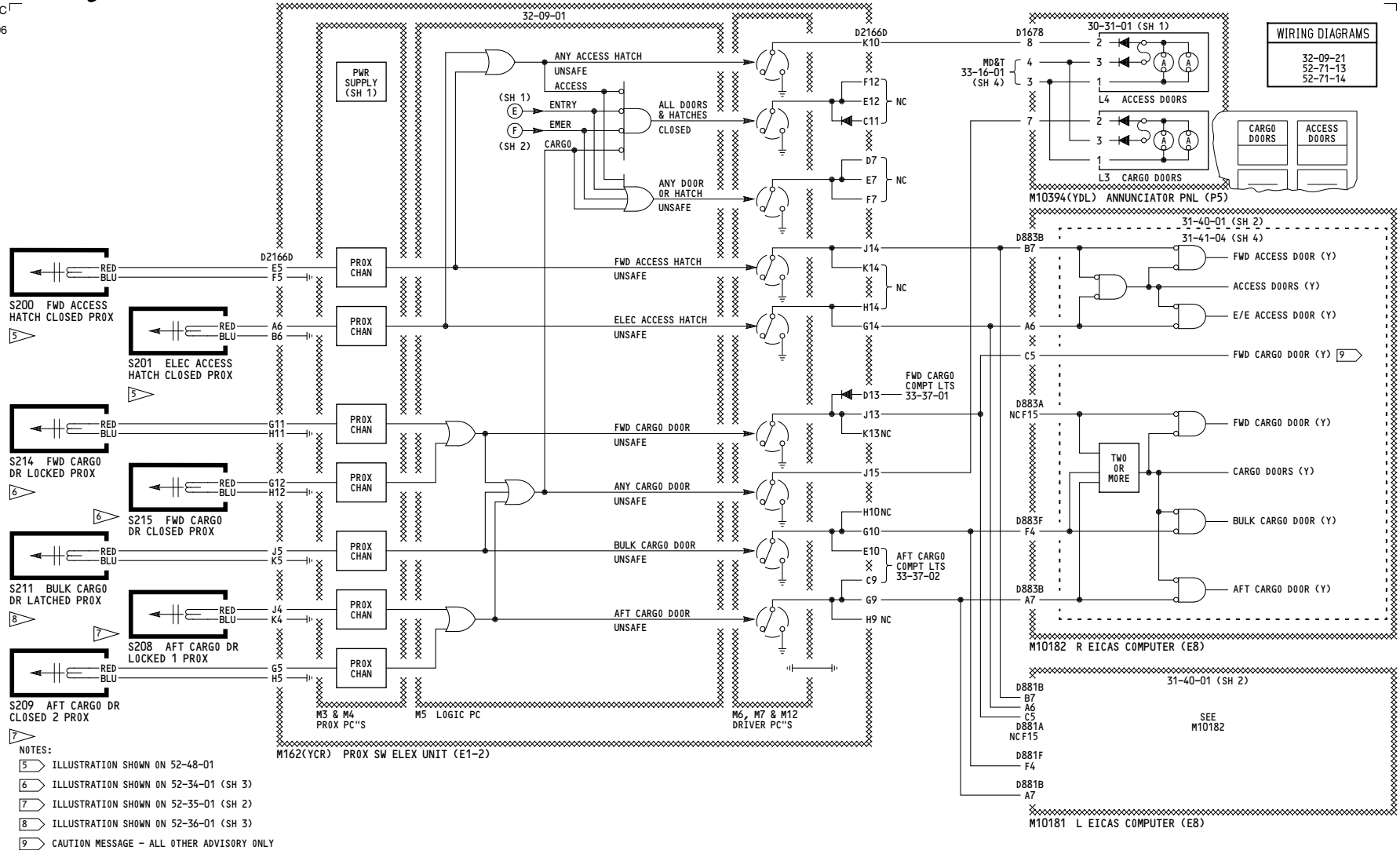
D280T232

52-70-01

Page 103  
Sheet 2  
Mar 09/2006



606



CARGO AND ACCESS DOORS

## DOOR WARNING

52-70-01

Page 103  
Sheet 3  
Mar 09/2006

D280T232