

**CHAPTER**

**75**

**AIR**



CHAPTER 75  
AIR

CH-SC-SU	Schem	Page	Sheet	Date	CH-SC-SU	Schem	Page	Sheet	Date
75-EFFECTIVE PAGES									
		1		Aug 05/2009					
		2		BLANK					
75-CONTENTS									
		1		Jun 28/2006					
		2		BLANK					
75-ALPHABETICAL INDEX									
		1		Jun 28/2006					
		2		BLANK					
75-23-01									
		101		Jan 21/2005					
75-24-01									
		101		Jan 21/2005					
75-32-03									
		101		Jan 21/2005					
75-32-04									
		101		Jan 21/2005					

A = Added, R = Revised, D = Deleted, O = Overflow

**75-EFFECTIVE PAGES**

CHAPTER 75  
AIR

Title	CH-SC-SU	Schem	Page	Sheet	Date	Effectivity
<b><u>ENGINE EXTERNAL ACCESSORIES COOLING</u></b>						
ENGINE EXTERNAL ACCESSORY COOLING	75-23-01		101		Jan 21/2005	ALL
<b><u>TURBINE COOLING SYSTEM</u></b>						
TURBINE CASE COOLING	75-24-01		101		Jan 21/2005	ALL
<b><u>COMPRESSOR BLEED CONTROL SYSTEM</u></b>						
2.9 BLEED CONTROL	75-32-03		101		Jan 21/2005	ALL
2.9 BLEED CONTROL	75-32-04		101		Jan 21/2005	ALL

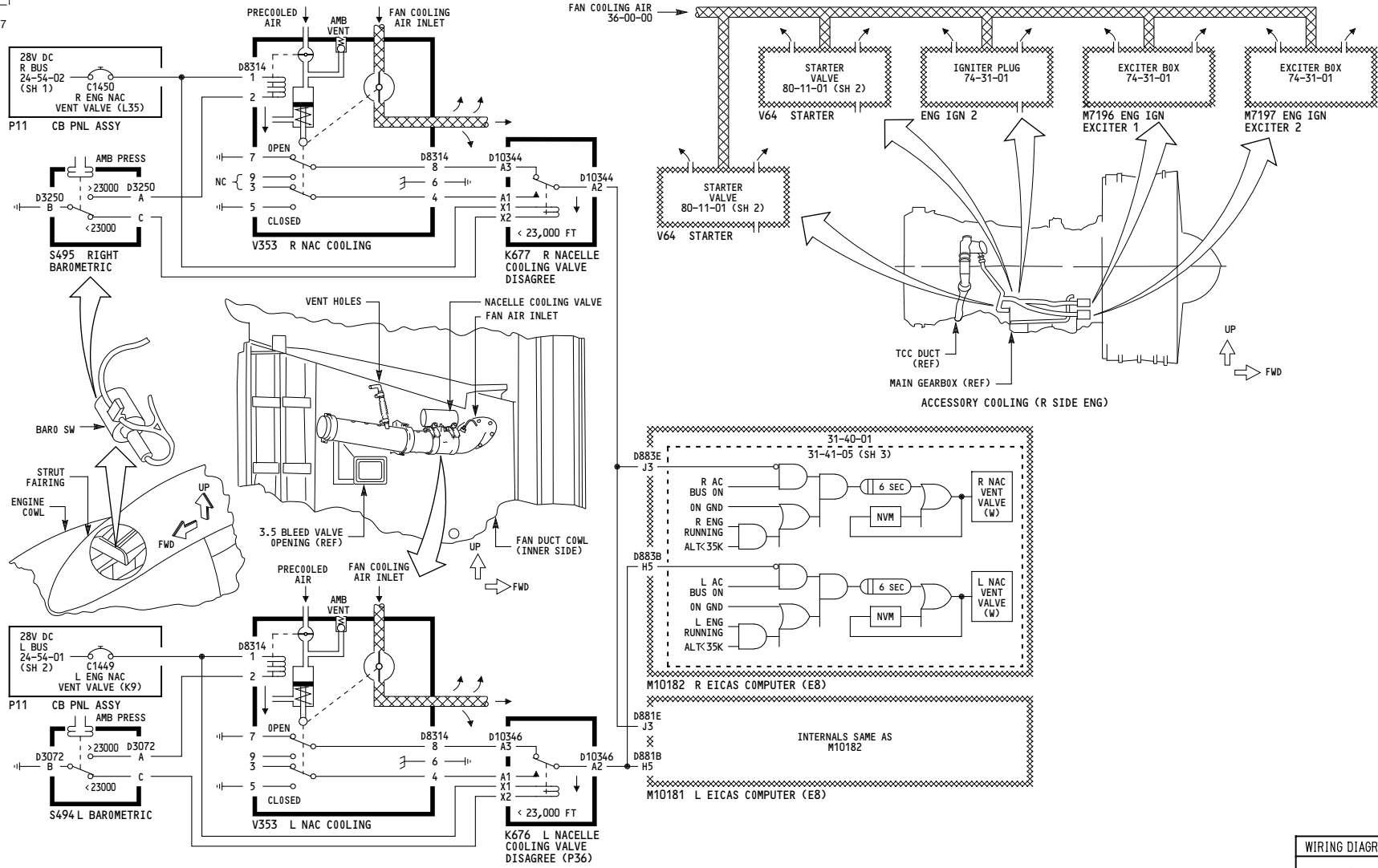
CHAPTER 75  
AIR

CH-SC-SU	Title
75-32-03	2.9 BLEED CONTROL
75-32-04	2.9 BLEED CONTROL
75-23-01	ENGINE EXTERNAL ACCESSORY COOLING
75-24-01	TURBINE CASE COOLING

CH-SC-SU	Title
----------	-------

**75-ALPHABETICAL INDEX**

607



XXXXX AIR SUPPLY

ALL

**ENGINE EXTERNAL ACCESSORY COOLING**

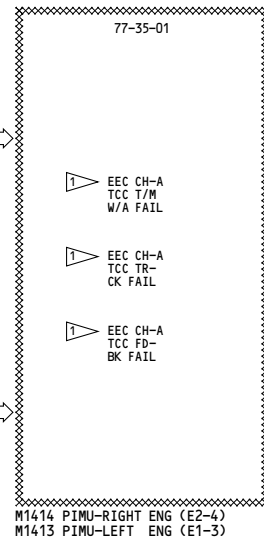
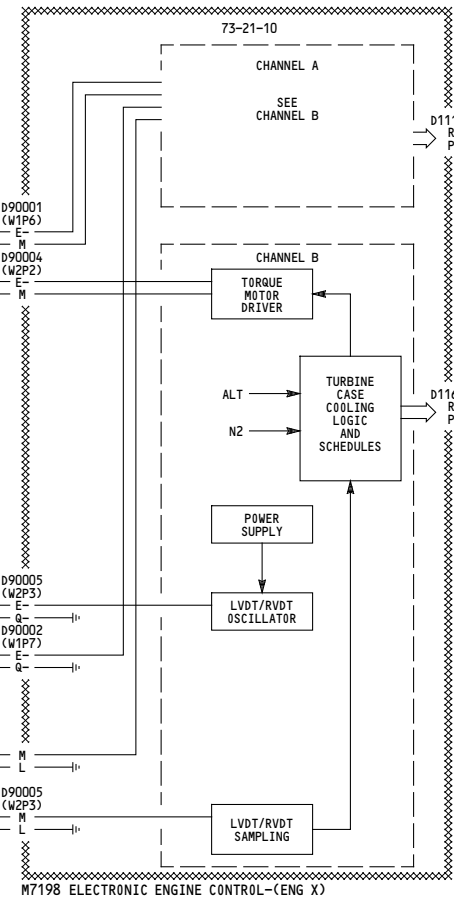
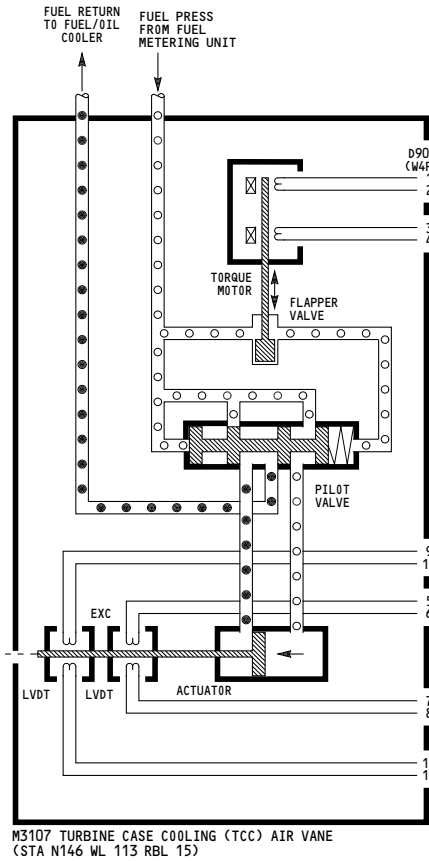
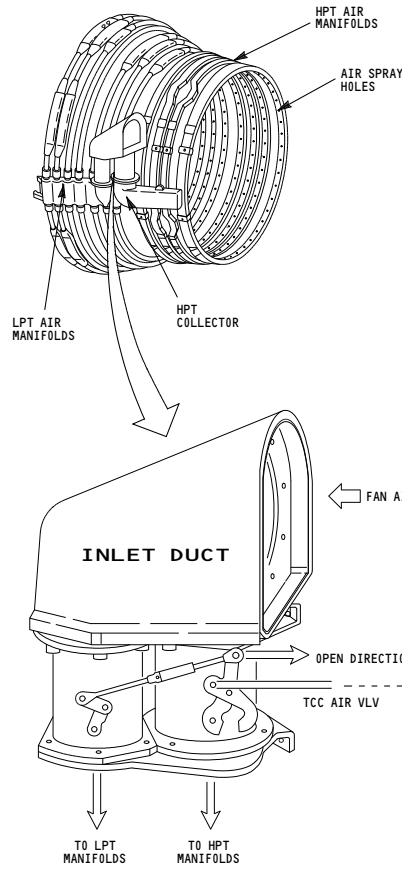
D280T232

WIRING DIAGRAMS  
75-23-11

**75-23-01**

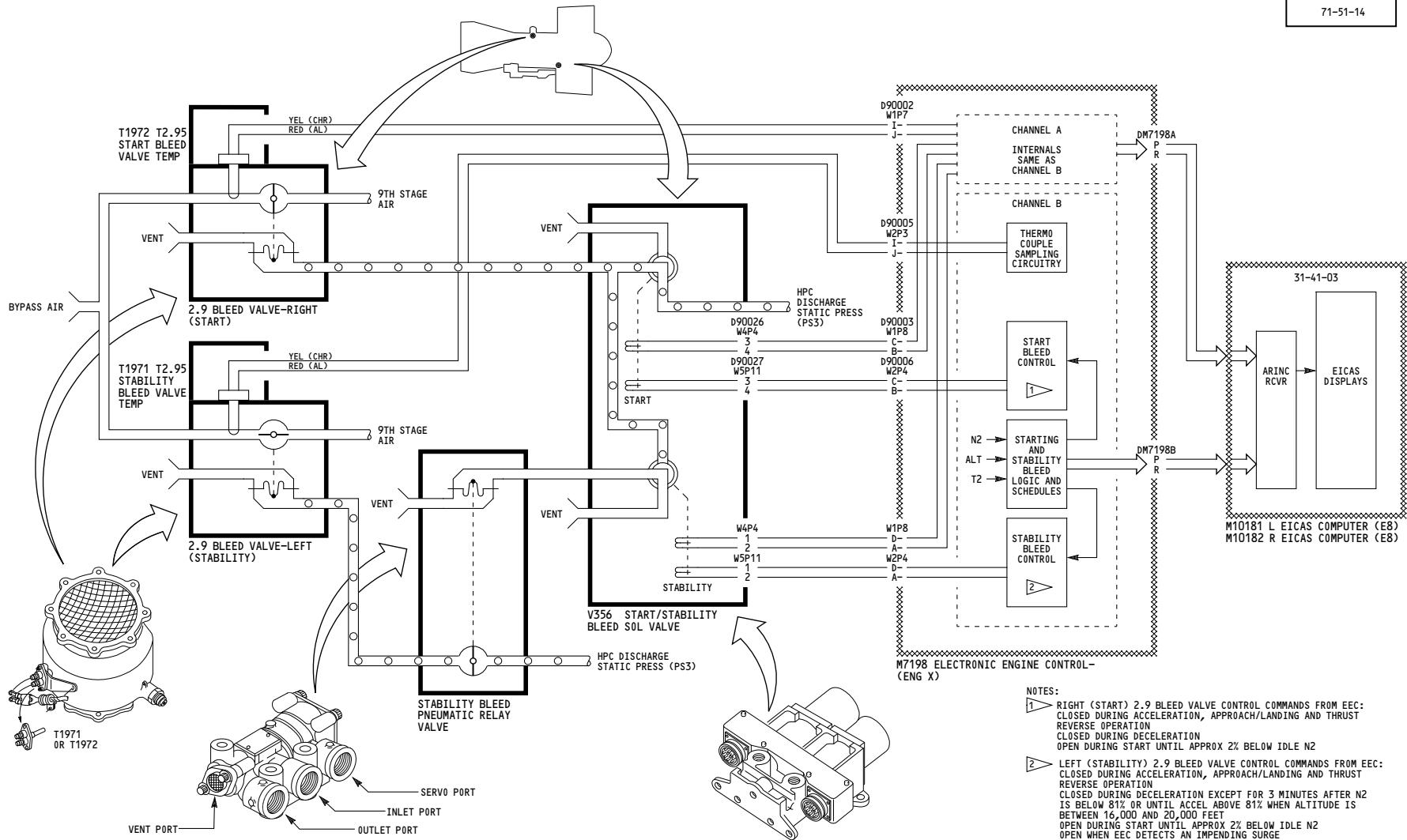
Page 101

Jan 21/2005



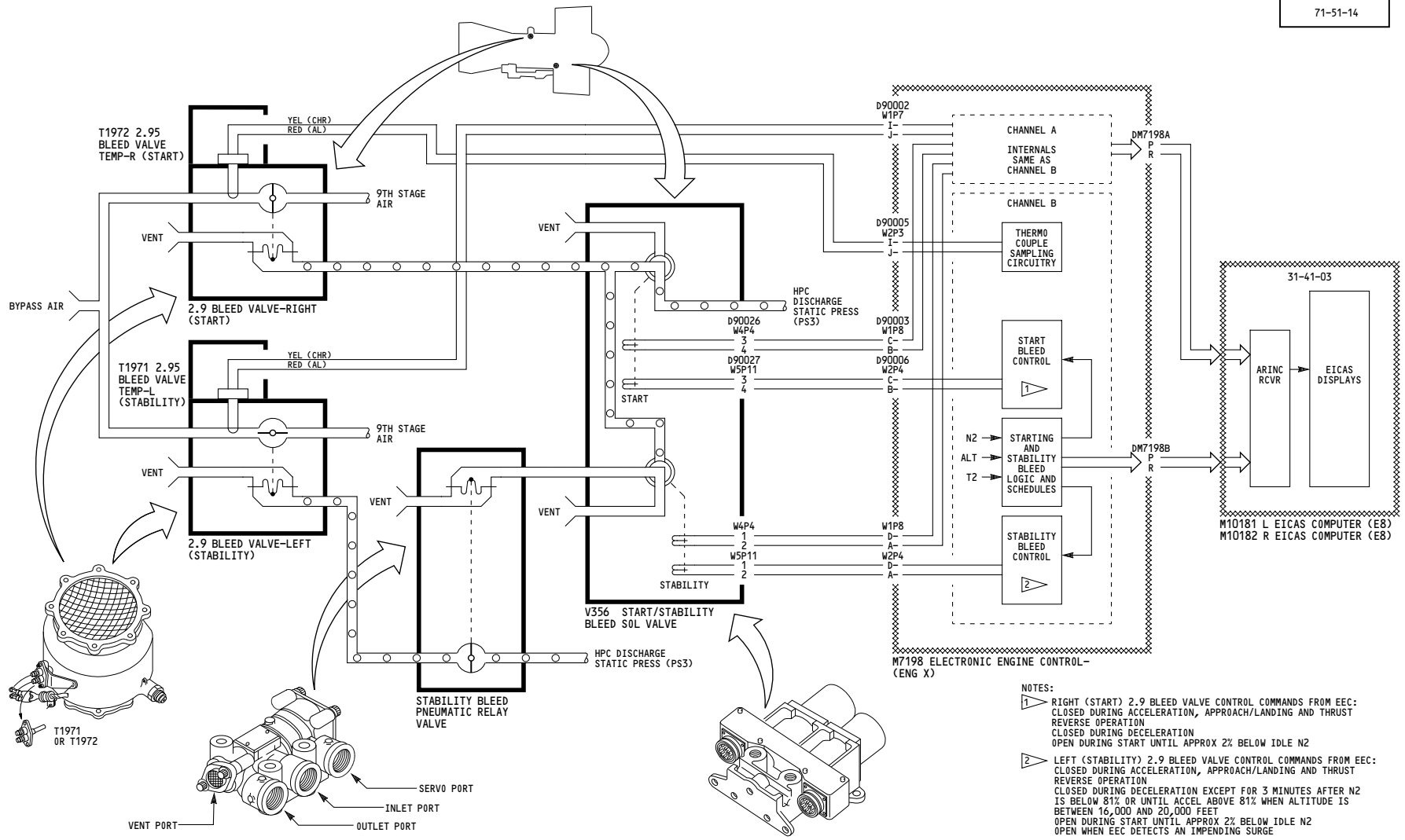
NOTES:  
CH-B REPLACES CH-A FOR CHANNEL B FAULTS.

ALL	<p><b>TURBINE CASE COOLING</b></p> <p>D280T232</p>
-----	--



- NOTES:
- 1 RIGHT (START) 2.9 BLEED VALVE CONTROL COMMANDS FROM EEC:  
CLOSED DURING ACCELERATION, APPROACH/LANDING AND THRUST REVERSE OPERATION  
CLOSED DURING DECELERATION  
OPEN DURING START UNTIL APPROX 2% BELOW IDLE N2
  - 2 LEFT (STABILITY) 2.9 BLEED VALVE CONTROL COMMANDS FROM EEC:  
CLOSED DURING ACCELERATION, APPROACH/LANDING AND THRUST REVERSE OPERATION  
CLOSED DURING DECELERATION EXCEPT FOR 3 MINUTES AFTER N2 IS BELOW 81% OR UNTIL ACCEL ABOVE 81% WHEN ALTITUDE IS BETWEEN 16,000 AND 20,000 FEET  
OPEN DURING START UNTIL APPROX 2% BELOW IDLE N2  
OPEN WHEN EEC DETECTS AN IMPENDING SURGE

ALL	<b>2.9 BLEED CONTROL</b>
	D280T232



- NOTES:
- 1 RIGHT (START) 2.9 BLEED VALVE CONTROL COMMANDS FROM EEC:  
CLOSED DURING ACCELERATION, APPROACH/LANDING AND THRUST REVERSE OPERATION  
CLOSED DURING DECELERATION  
OPEN DURING START UNTIL APPROX 2% BELOW IDLE N2
  - 2 LEFT (STABILITY) 2.9 BLEED VALVE CONTROL COMMANDS FROM EEC:  
CLOSED DURING ACCELERATION, APPROACH/LANDING AND THRUST REVERSE OPERATION  
CLOSED DURING DECELERATION EXCEPT FOR 3 MINUTES AFTER N2 IS BELOW 81% OR UNTIL ACCEL ABOVE 81% WHEN ALTITUDE IS BETWEEN 16,000 AND 20,000 FEET  
OPEN DURING START UNTIL APPROX 2% BELOW IDLE N2  
OPEN WHEN EEC DETECTS AN IMPENDING SURGE

ALL	<b>2.9 BLEED CONTROL</b>
	D280T232

**75-32-04**