

CHAPTER

78

EXHAUST

CHAPTER 78
EXHAUST

CH-SC-SU	Schem	Page	Sheet	Date	CH-SC-SU	Schem	Page	Sheet	Date
78-EFFECTIVE PAGES					78-36-01				
		1		Aug 05/2009			101.1	1	Jan 21/2005
		2		BLANK				2	Jan 21/2005
78-CONTENTS								3	Jan 21/2005
		1		Jun 28/2006				4	Jan 21/2005
		2		Jun 28/2006				5	Jan 21/2005
78-ALPHABETICAL INDEX								6	Jan 21/2005
		1		Jun 28/2006			102.1	1	Jan 21/2005
		2		BLANK				2	Jan 21/2005
78-30-01								3	Jan 21/2005
		101.1	1	Jan 21/2005				4	Jan 21/2005
			2	Jan 21/2005				5	Jan 21/2005
			3	Jan 21/2005				6	Jan 21/2005
			4	Jan 21/2005	78-36-02				
			5	Jan 21/2005			101.1	1	Jan 21/2005
78-34-01								2	Jan 21/2005
		101.1	1	Jan 21/2005				3	Jan 21/2005
			2	Jan 21/2005				4	Jan 21/2005
		102.1	1	Jan 21/2005			102.1	1	Jan 21/2005
			2	Jan 21/2005				2	Jan 21/2005
78-34-02								3	Jan 21/2005
		101.1	1	Jan 21/2005				4	Jan 21/2005
			2	Jan 21/2005					
		102.1	1	Jan 21/2005					
			2	Jan 21/2005					

A = Added, R = Revised, D = Deleted, O = Overflow

78-EFFECTIVE PAGES

Page 1
Aug 05/2009

D280T232

BOEING PROPRIETARY - Copyright © Unpublished Work - See title page for details

CHAPTER 78
EXHAUST

Title	CH-SC-SU	Schem	Page	Sheet	Date	Effectivity	
<u>THRUST REVERSER</u>							
THRUST REVERSER	78-30-01		101.1	1	Jan 21/2005	050-280	
				2	Jan 21/2005	050-280	
				3	Jan 21/2005	050-280	
				4	Jan 21/2005	050-280	
				5	Jan 21/2005	050-280	
<u>THRUST REVERSER CONTROL SYSTEM</u>							
THRUST REVERSER CONTROL	78-34-01		101.1	1	Jan 21/2005	050-156 162-166 275-276	
				2	Jan 21/2005	050-156 162-166 275-276	
				102.1	1	Jan 21/2005	157 167 277-280
				2	Jan 21/2005	157 167 277-280	
THRUST REVERSER CONTROL RIGHT ENGINE	78-34-02		101.1	1	Jan 21/2005	050-156 162-166 275-276	
				2	Jan 21/2005	050-156 162-166 275-276	
				102.1	1	Jan 21/2005	157 167 277-280
				2	Jan 21/2005	157 167 277-280	
<u>THRUST REVERSER INDICATING SYSTEM</u>							
THRUST REVERSER INDICATION	78-36-01		101.1	1	Jan 21/2005	050-156 162-166 275-276	
				2	Jan 21/2005	050-156 162-166 275-276	
				3	Jan 21/2005	050-156 162-166 275-276	
				4	Jan 21/2005	050-156 162-166 275-276	
				5	Jan 21/2005	050-156 162-166 275-276	
				6	Jan 21/2005	050-156 162-166 275-276	
				102.1	1	Jan 21/2005	157 167 277-280

CHAPTER 78
EXHAUST

Title	CH-SC-SU	Schem	Page	Sheet	Date	Effectivity
THRUST REVERSER INDICATION (cont.)	78-36-01			2	Jan 21/2005	157 167 277-280
				3	Jan 21/2005	157 167 277-280
				4	Jan 21/2005	157 167 277-280
				5	Jan 21/2005	157 167 277-280
				6	Jan 21/2005	157 167 277-280
RIGHT ENGINE THRUST REVERSER INDICATION	78-36-02		101.1	1	Jan 21/2005	050-156 162-166 275-276
				2	Jan 21/2005	050-156 162-166 275-276
				3	Jan 21/2005	050-156 162-166 275-276
				4	Jan 21/2005	050-156 162-166 275-276
			102.1	1	Jan 21/2005	157 167 277-280
				2	Jan 21/2005	157 167 277-280
				3	Jan 21/2005	157 167 277-280
				4	Jan 21/2005	157 167 277-280



CHAPTER 78
EXHAUST

CH-SC-SU	Title
78-36-02	RIGHT ENGINE THRUST REVERSER INDICATION
78-30-01	THRUST REVERSER
78-34-01	THRUST REVERSER CONTROL
78-34-02	THRUST REVERSER CONTROL RIGHT ENGINE
78-36-01	THRUST REVERSER INDICATION

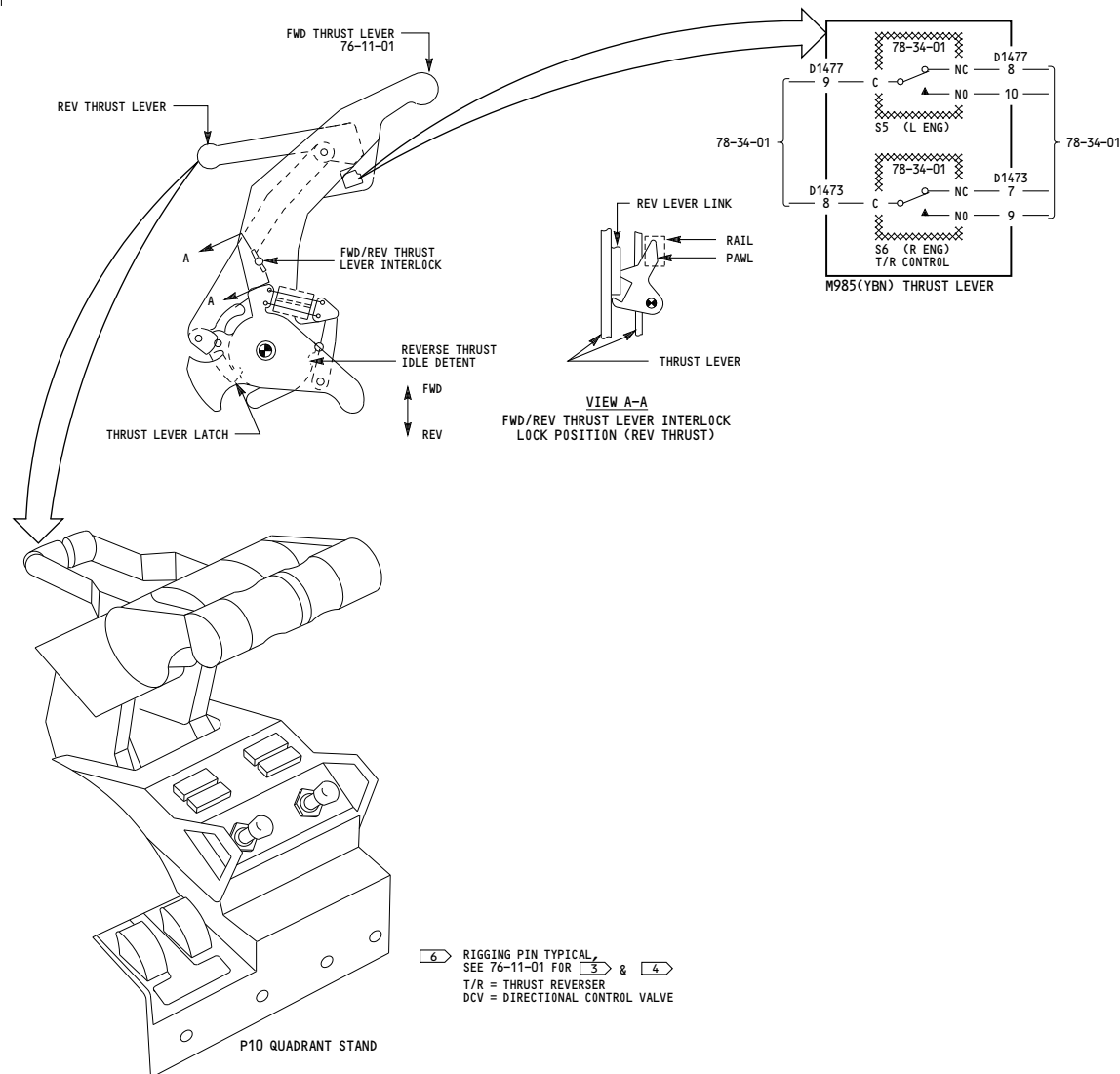
CH-SC-SU	Title

78-ALPHABETICAL INDEX

D280T232

THIS PAGE INTENTIONALLY LEFT BLANK

607



050-280

THRUST REVERSER

D280T232

78-30-01

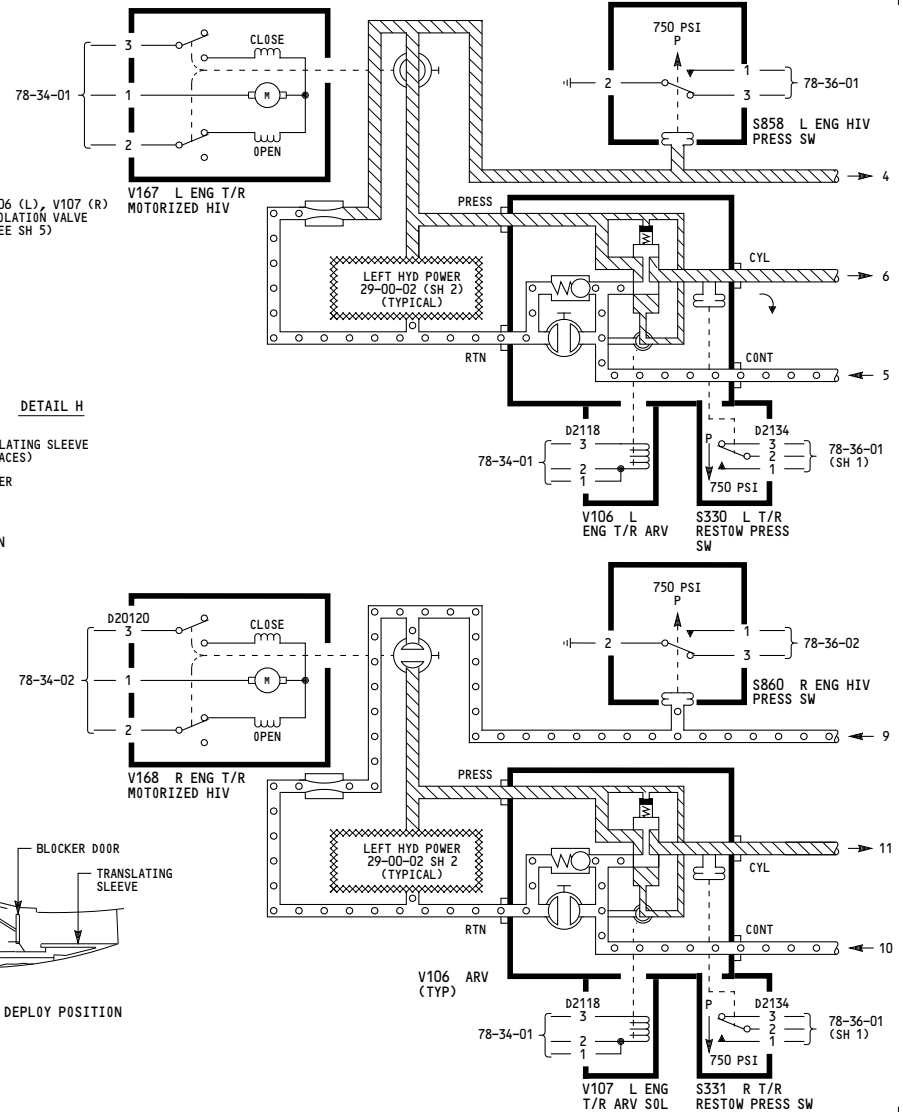
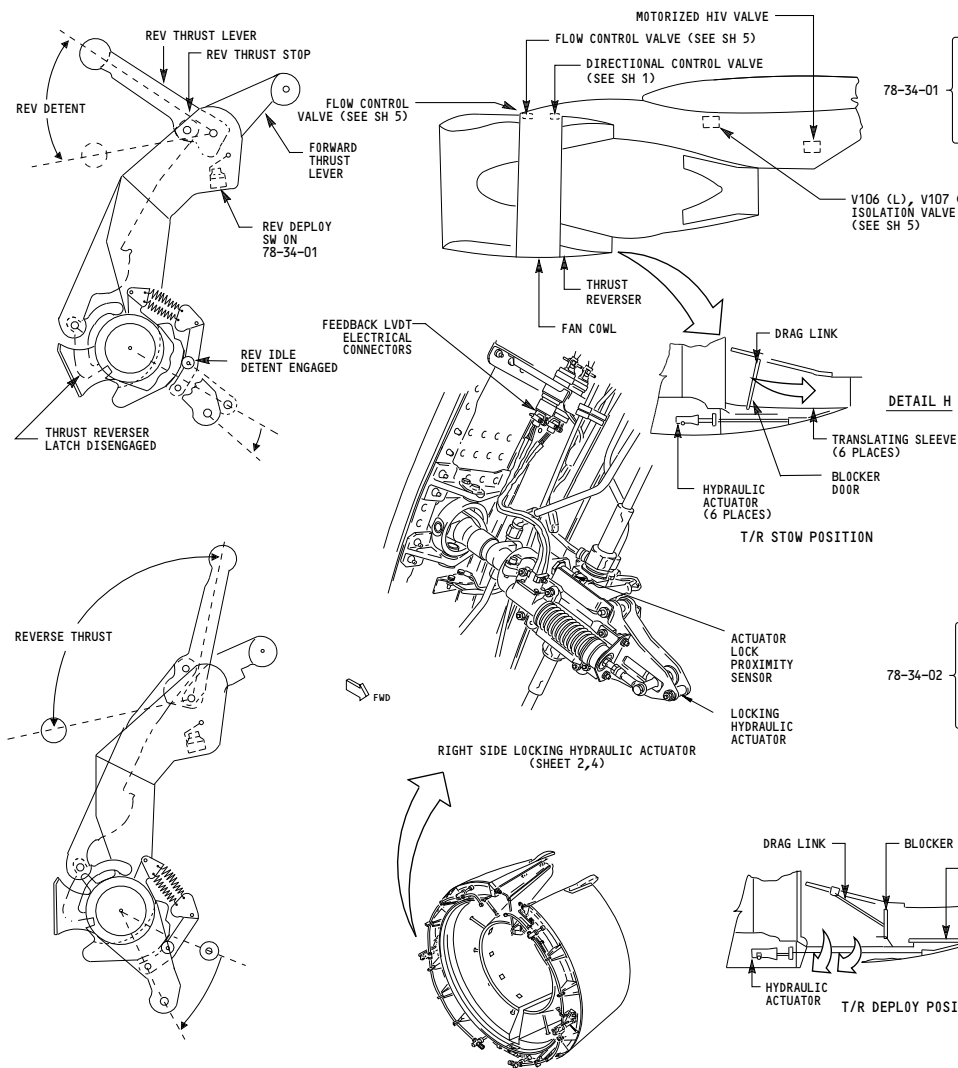
Page 101.1
Sheet 1
Jan 21/2005



Incorporates
▶ 78-0062 R04

78-30-01

608



050-280

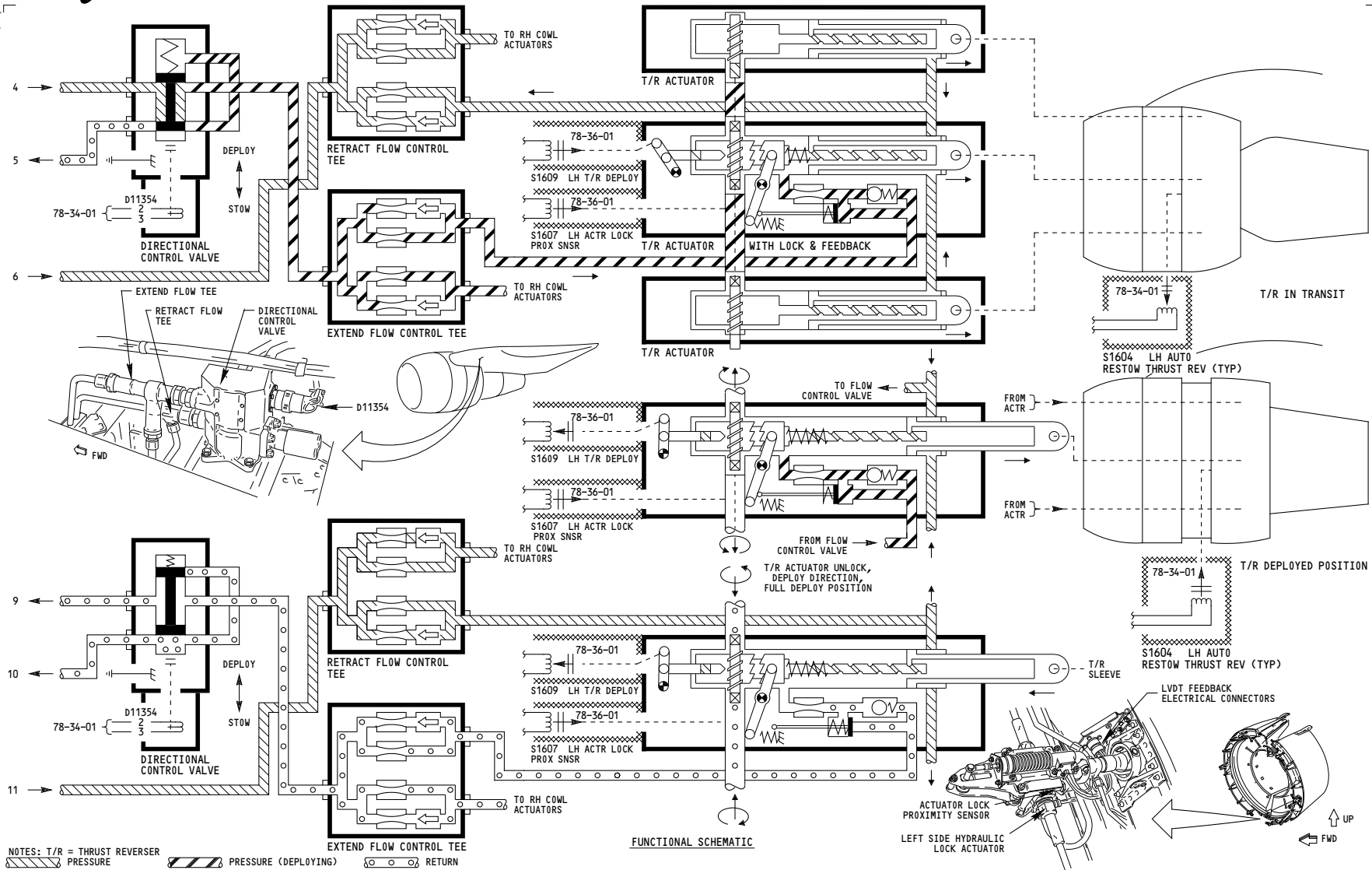
THRUST REVERSER

D280T232

78-30-01

Page 101.1
Sheet 3
Jan 21/2005

607



NOTES: T/R = THRUST REVERSER
 PRESSURE PRESSURE (DEPLOYING) RETURN

FUNCTIONAL SCHEMATIC

ACTUATOR LOCK
PROXIMITY SENSOR

LEFT SIDE HYDRAULIC
LOCK ACTUATOR

UP
FWD

050-280

THRUST REVERSER

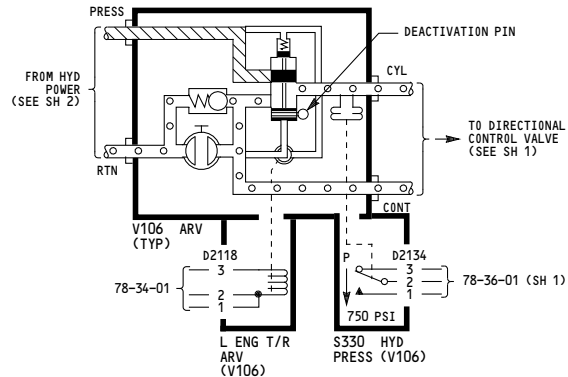
D280T232

78-30-01

Page 101.1
Sheet 4
Jan 21/2005

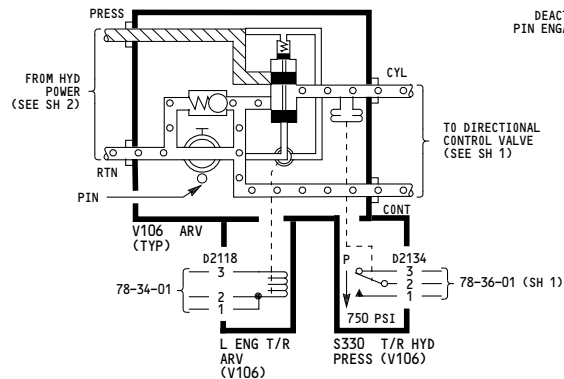
607

WIRING DIAGRAMS	
78-34-11	
78-34-21	
78-36-11	
78-36-21	



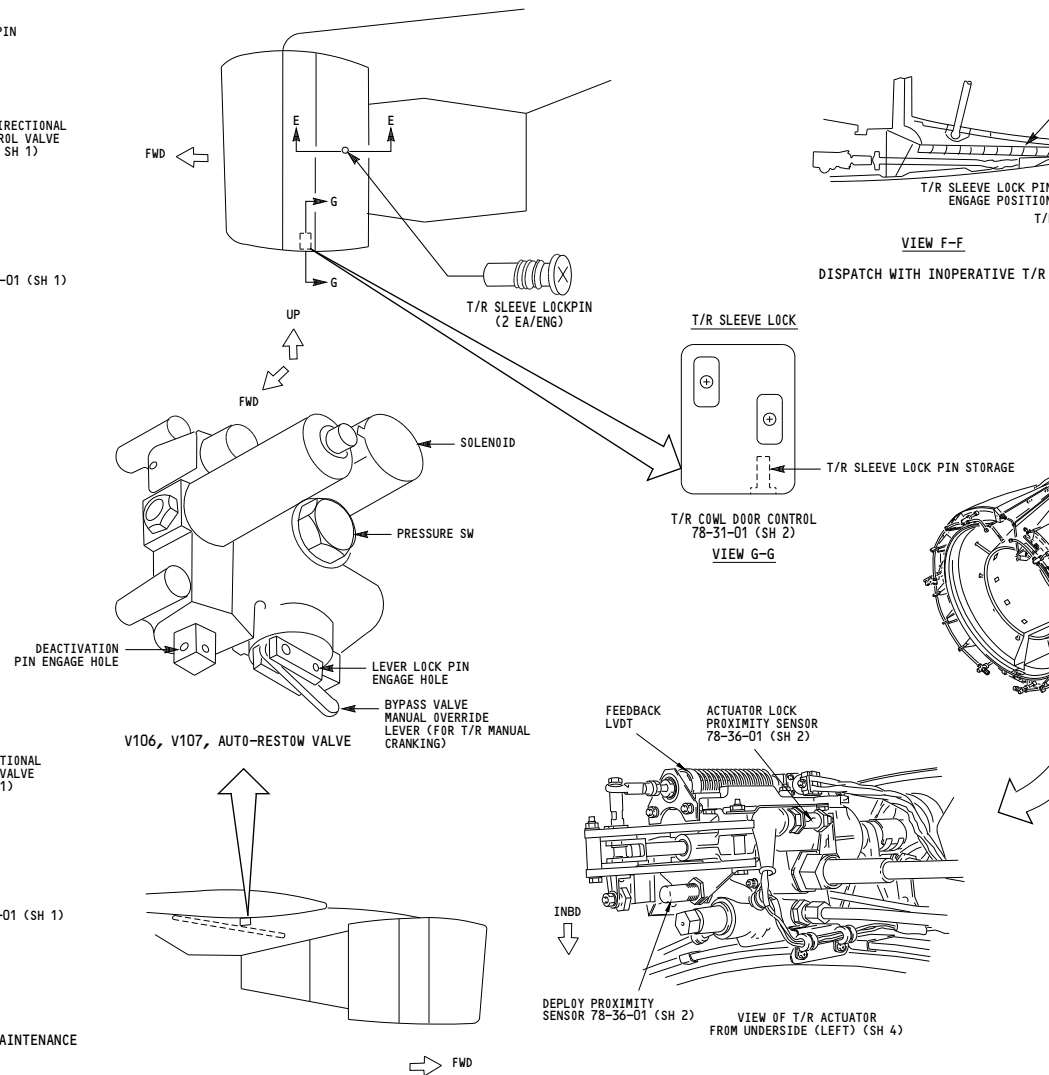
DISPATCH WITH INOPERATIVE T/R
& MAINTENANCE

ISOLATION VALVE DEACTIVATION



NOTES: T/R = THRUST REVERSER

BY-PASS FOR MANUAL CRANKING, MAINTENANCE



050-280	<p>THRUST REVERSER</p> <p>D280T232</p>
---------	---

78-30-01

Page 101.1
Sheet 5
Jan 21/2005

THIS PAGE INTENTIONALLY LEFT BLANK

THRUST REVERSER CONTROL

78-34-01

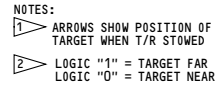
Page 101.1
Sheet 1
Jan 21/2005

BOEING PROPRIETARY - Copyright © - Unpublished Work - See title page for details.

D280T232



BOEING PROPRIETARY - Copyright © - Unpublished Work - See title page for details.



THRUST REVERSER CONTROL

D280T232

Page 102.1
Sheet 1
Jan 21/2005



BOEING PROPRIETARY - Copyright © - Unpublished Work - See title page for details.

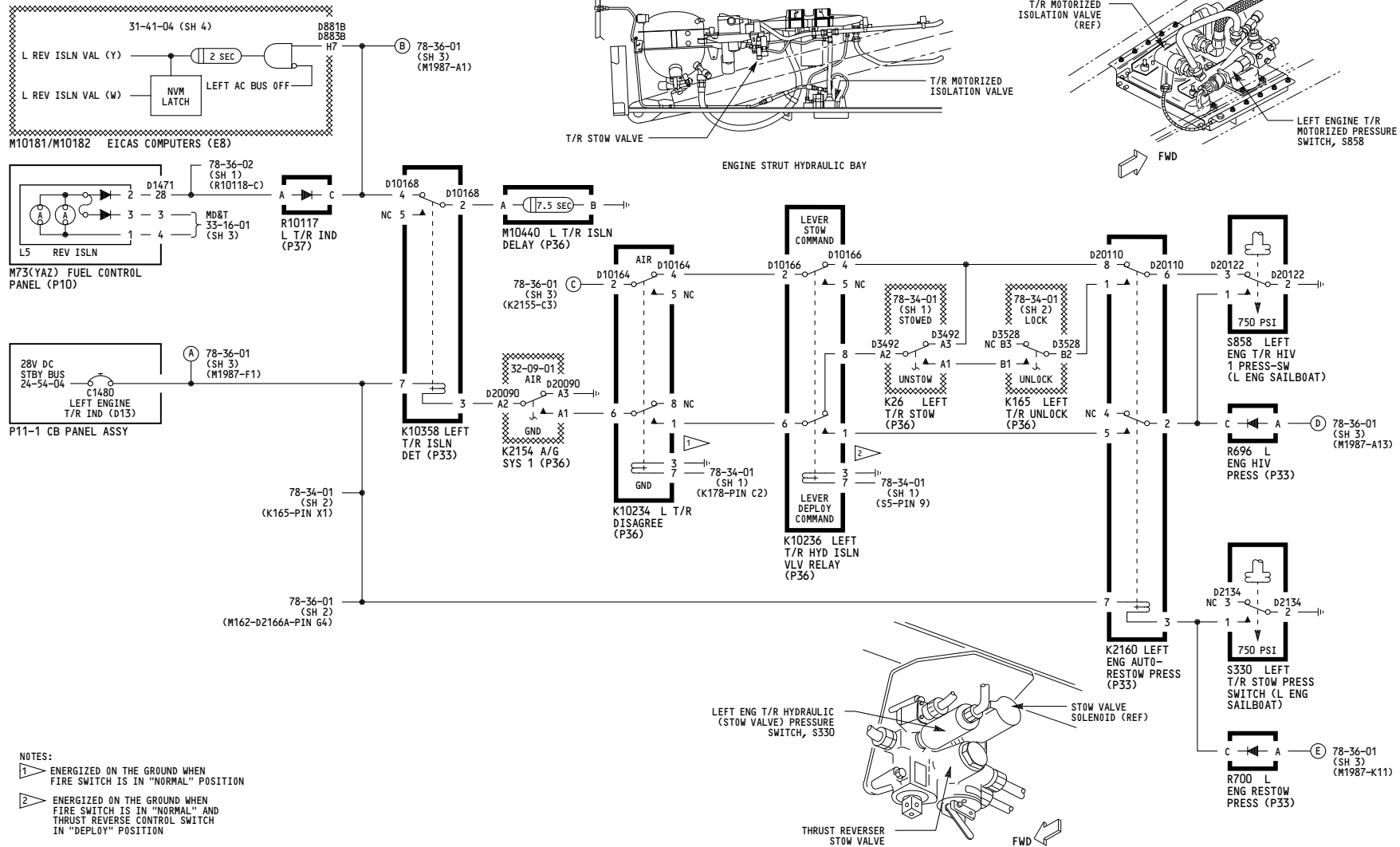


BOEING PROPRIETARY - Copyright © - Unpublished Work - See title page for details.





BOEING PROPRIETARY - Copyright © - Unpublished Work - See title page for details.

653



050-156, 162-166, 275-276

THRUST REVERSER INDICATION

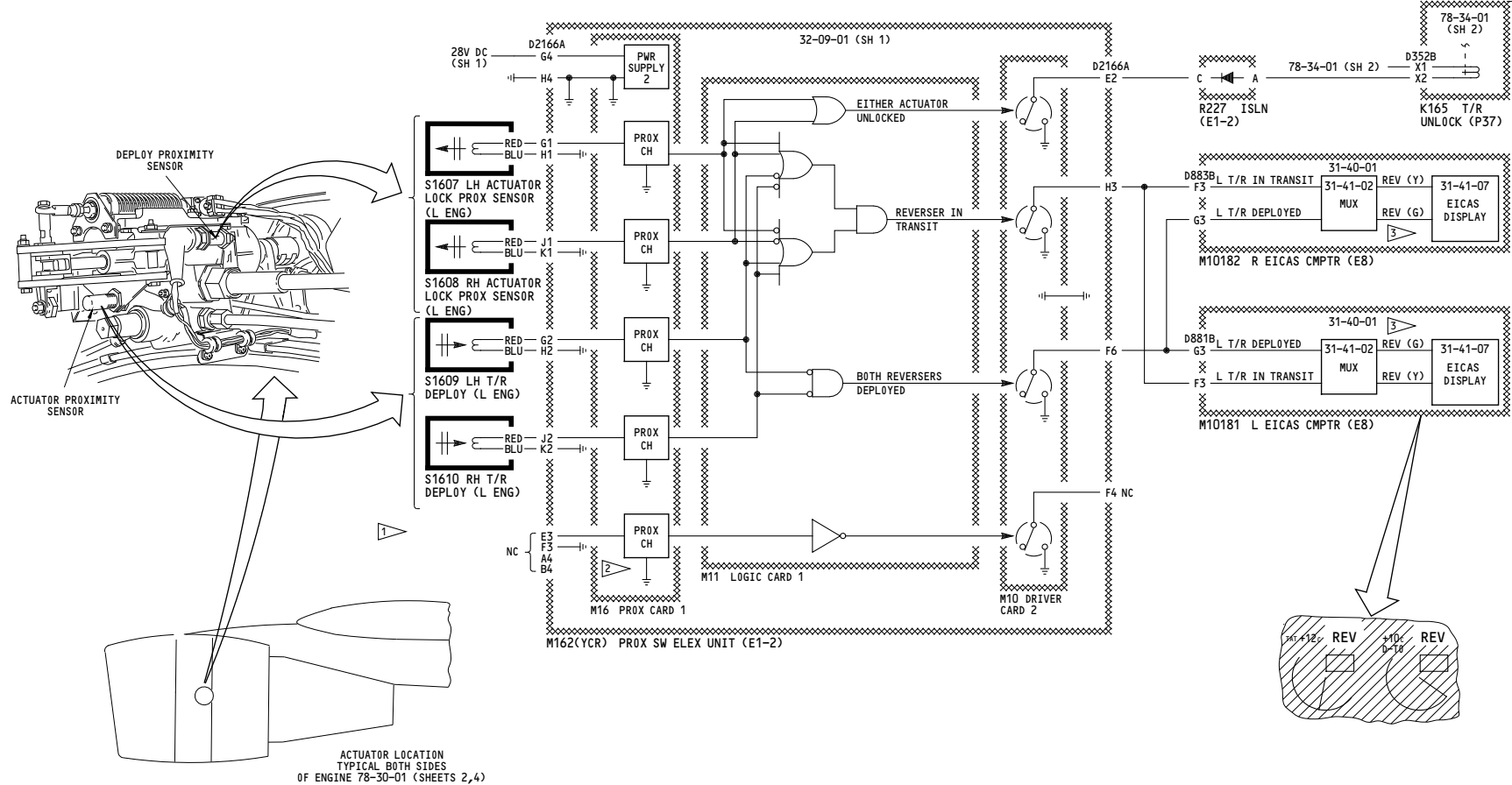
Incorporates
 78-0051FAA
 78-0062 R04

78-36-01

Page 101.1
Sheet 1
Jan 21/2005

D280T232

618



050-156, 162-166, 275-276

**THRUST REVERSER
INDICATION**

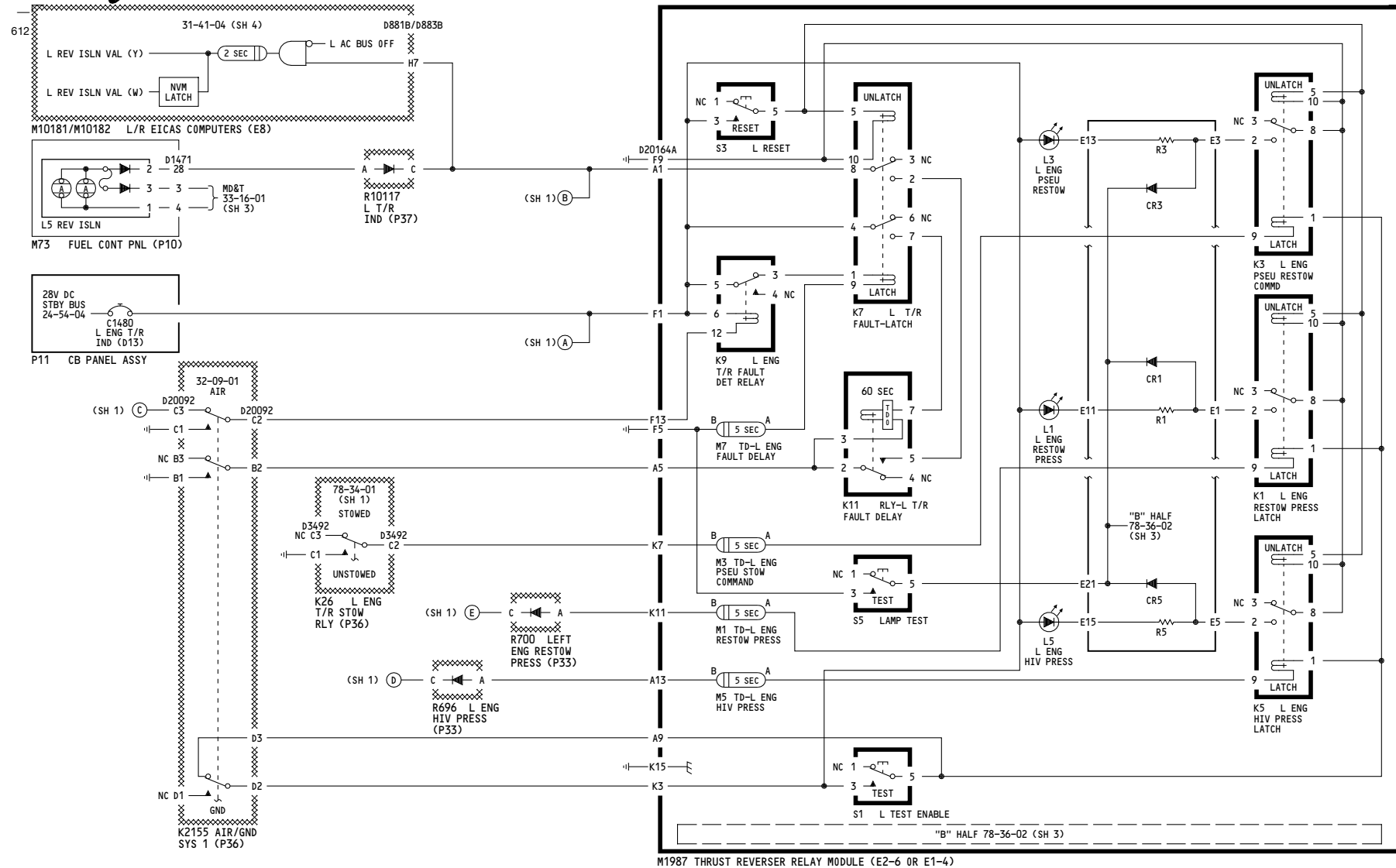
Incorporates
78-0062 R04

D280T232

WIRING DIAGRAMS
78-34-11
78-36-11

78-36-01

Page 101.1
Sheet 2
Jan 21/2005



050-156, 162-166, 275-276

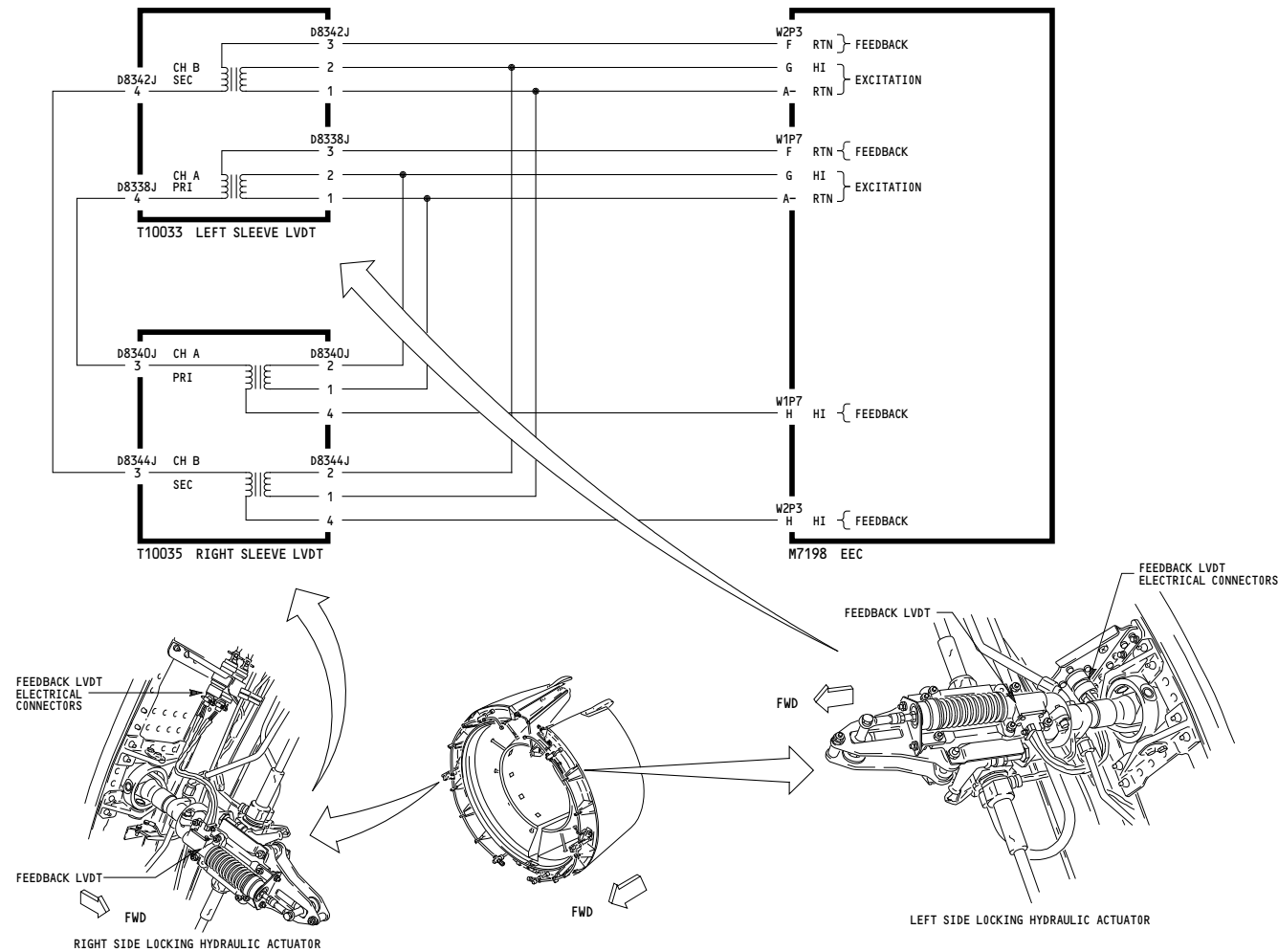
THRUST REVERSER INDICATION

D280T232

Incorporates
78-0062 R04

78-36-01

Page 101.1
Sheet 3
Jan 21/2005



LEFT ENGINE SHOWN, RIGHT ENGINE SIMILAR

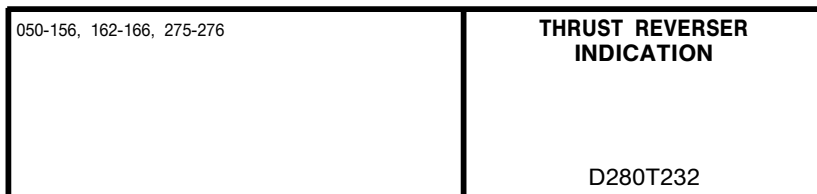
050-156, 162-166, 275-276

**THRUST REVERSER
INDICATION**

D280T232

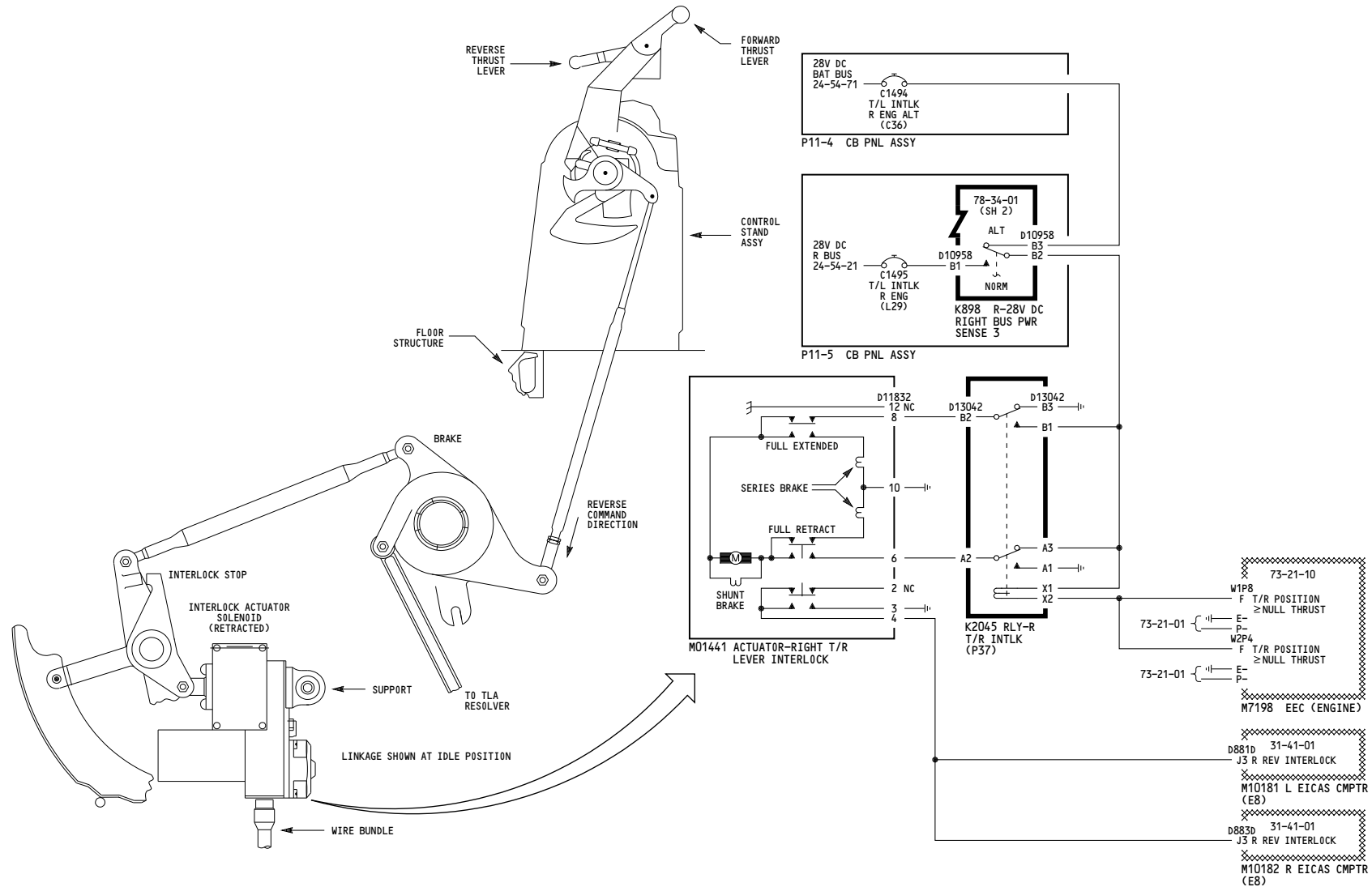
78-36-01

Page 101.1
Sheet 4
Jan 21/2005



Page 101.1
Sheet 5
Jan 21/2005

-A[□]
605



050-156, 162-166, 275-276

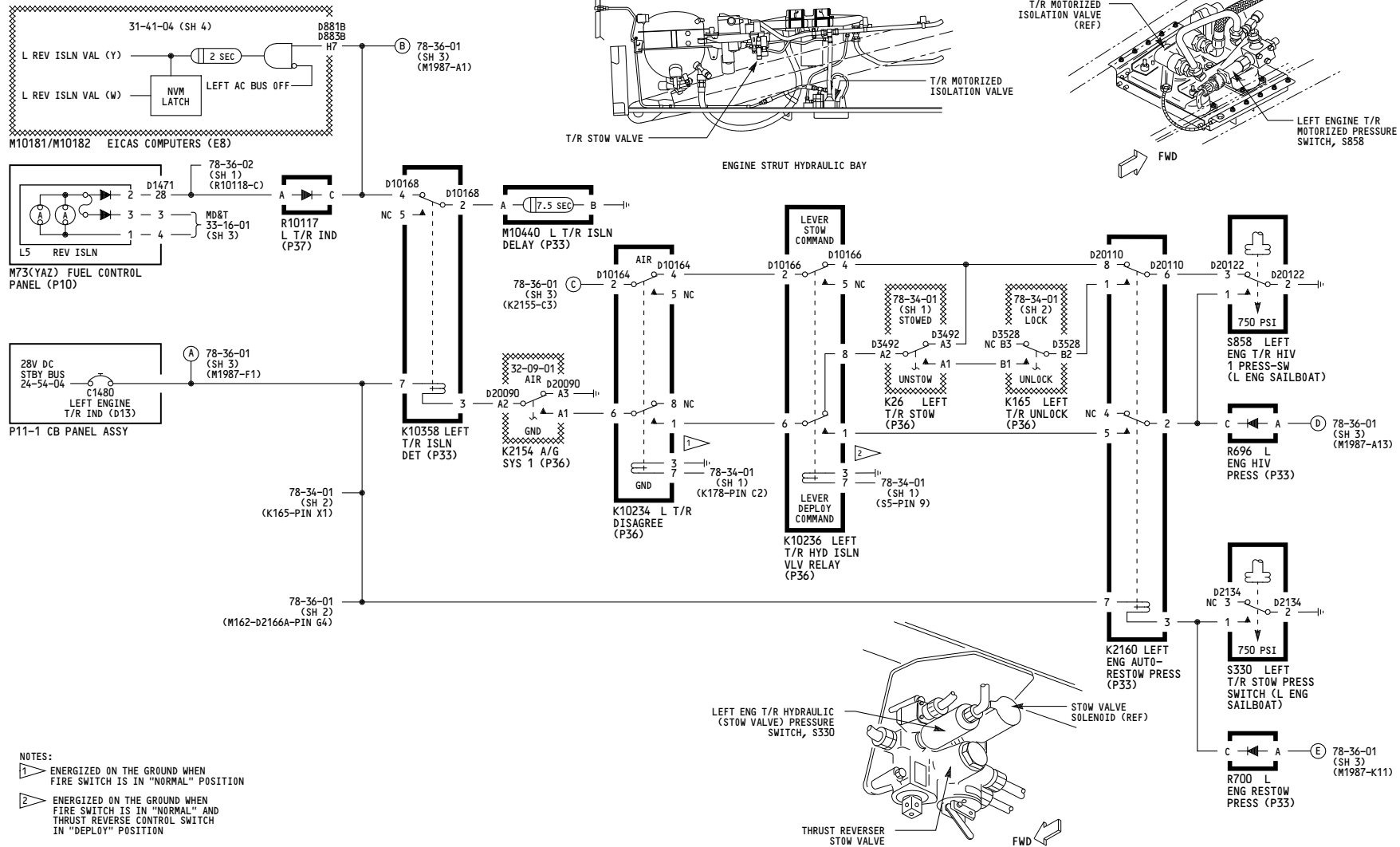
THRUST REVERSER INDICATION

D280T232

78-36-01

Page 101.1
Sheet 6
Jan 21/2005

637



157, 167, 277-280

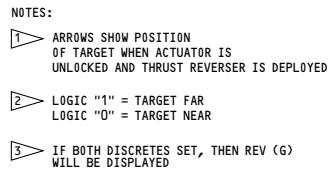
THRUST REVERSER INDICATION

Incorporates
78-0062 R04

D280T232

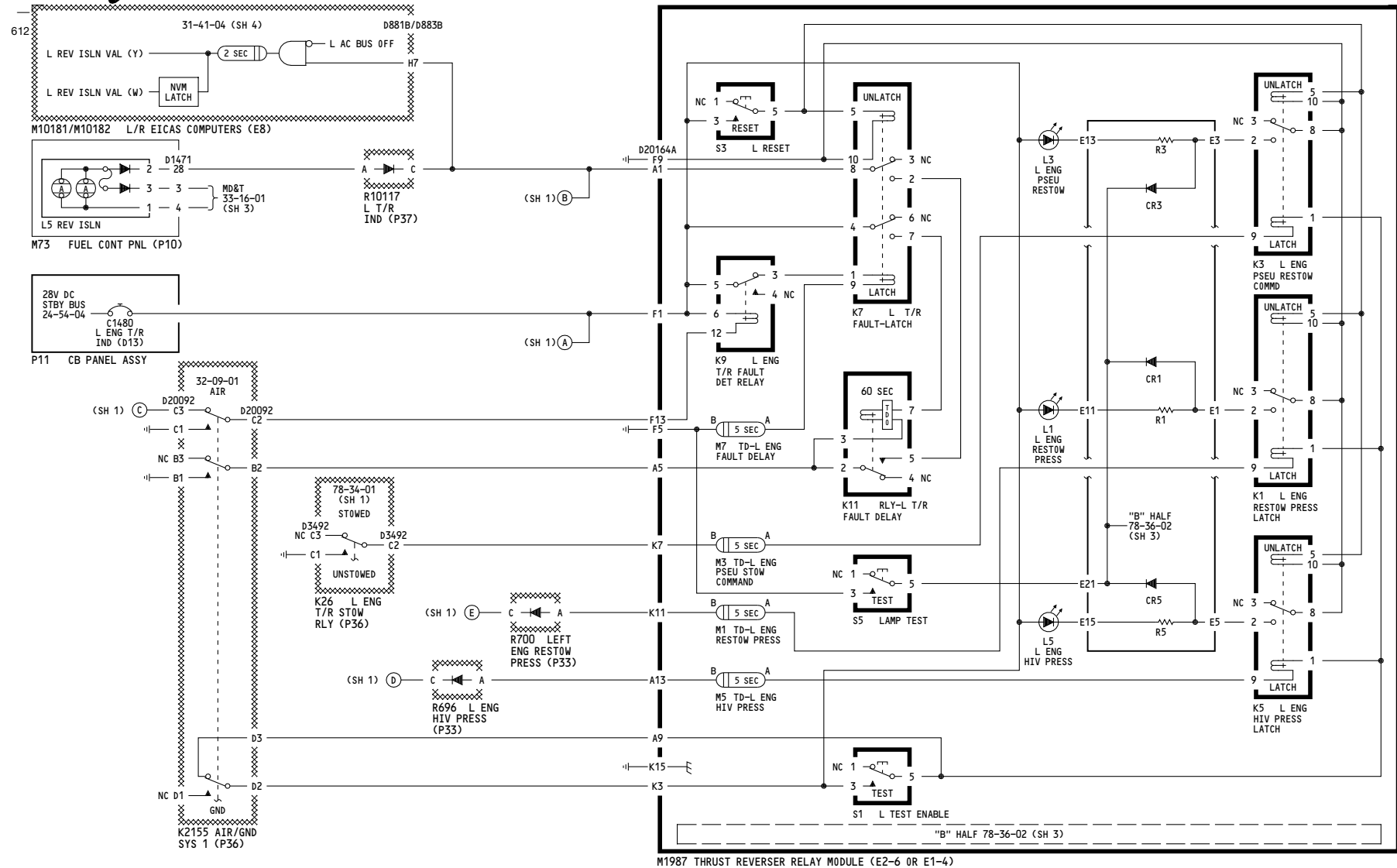
78-36-01

Page 102.1
Sheet 1
Jan 21/2005



WIRING DIAGRAMS
78-34-11
78-36-11

Page 102.1
Sheet 2
Jan 21/2005



157, 167, 277-280

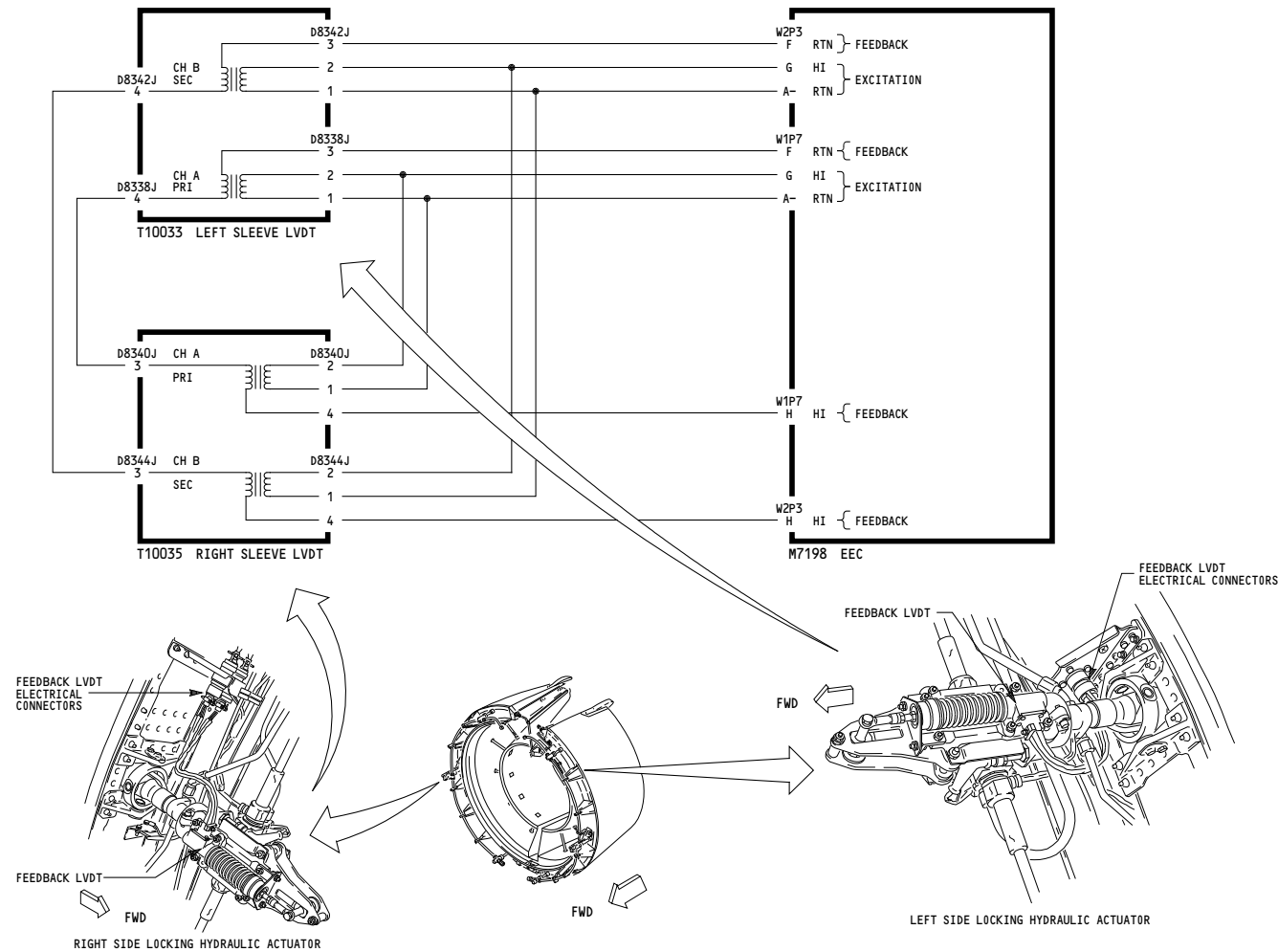
THRUST REVERSER INDICATION

D280T232

Incorporates
78-0062 R04

78-36-01

Page 102.1
Sheet 3
Jan 21/2005



LEFT ENGINE SHOWN, RIGHT ENGINE SIMILAR

157, 167, 277-280

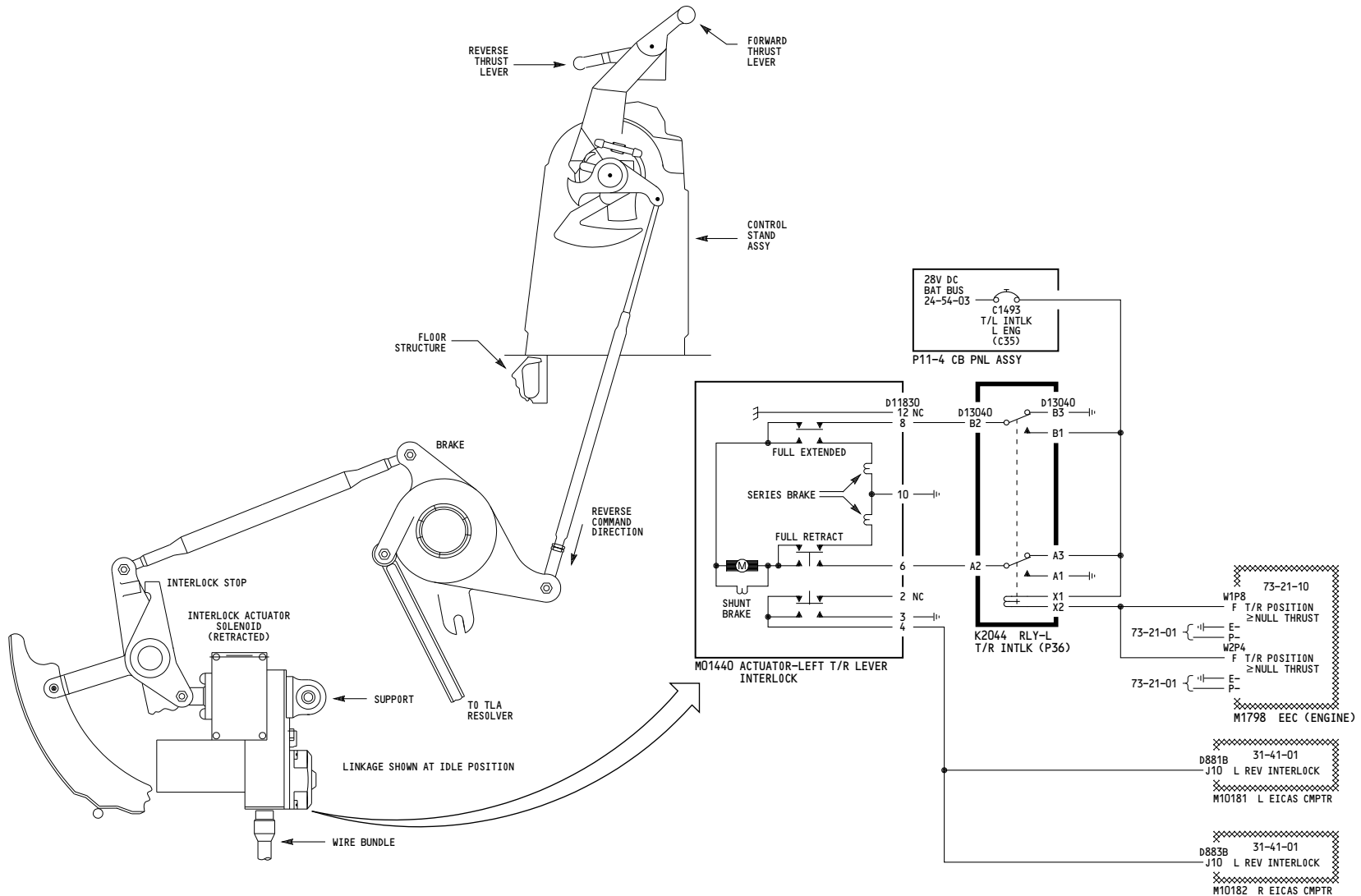
**THRUST REVERSER
INDICATION**

D280T232

78-36-01

Page 102.1
Sheet 4
Jan 21/2005

-B
609



157, 167, 277-280

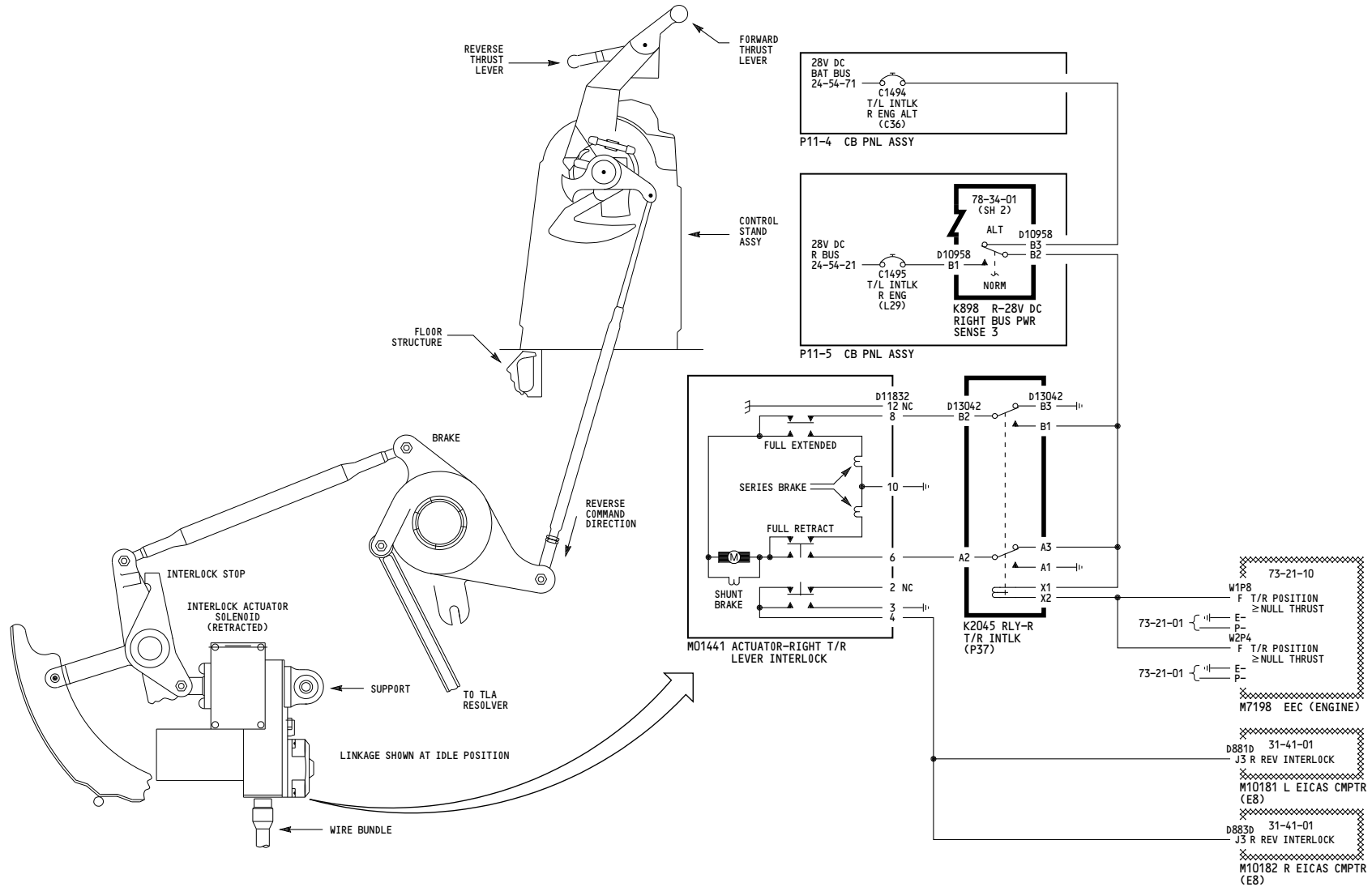
**THRUST REVERSER
INDICATION**

D280T232

78-36-01

Page 102.1
Sheet 5
Jan 21/2005

-A
605



157, 167, 277-280

**THRUST REVERSER
INDICATION**

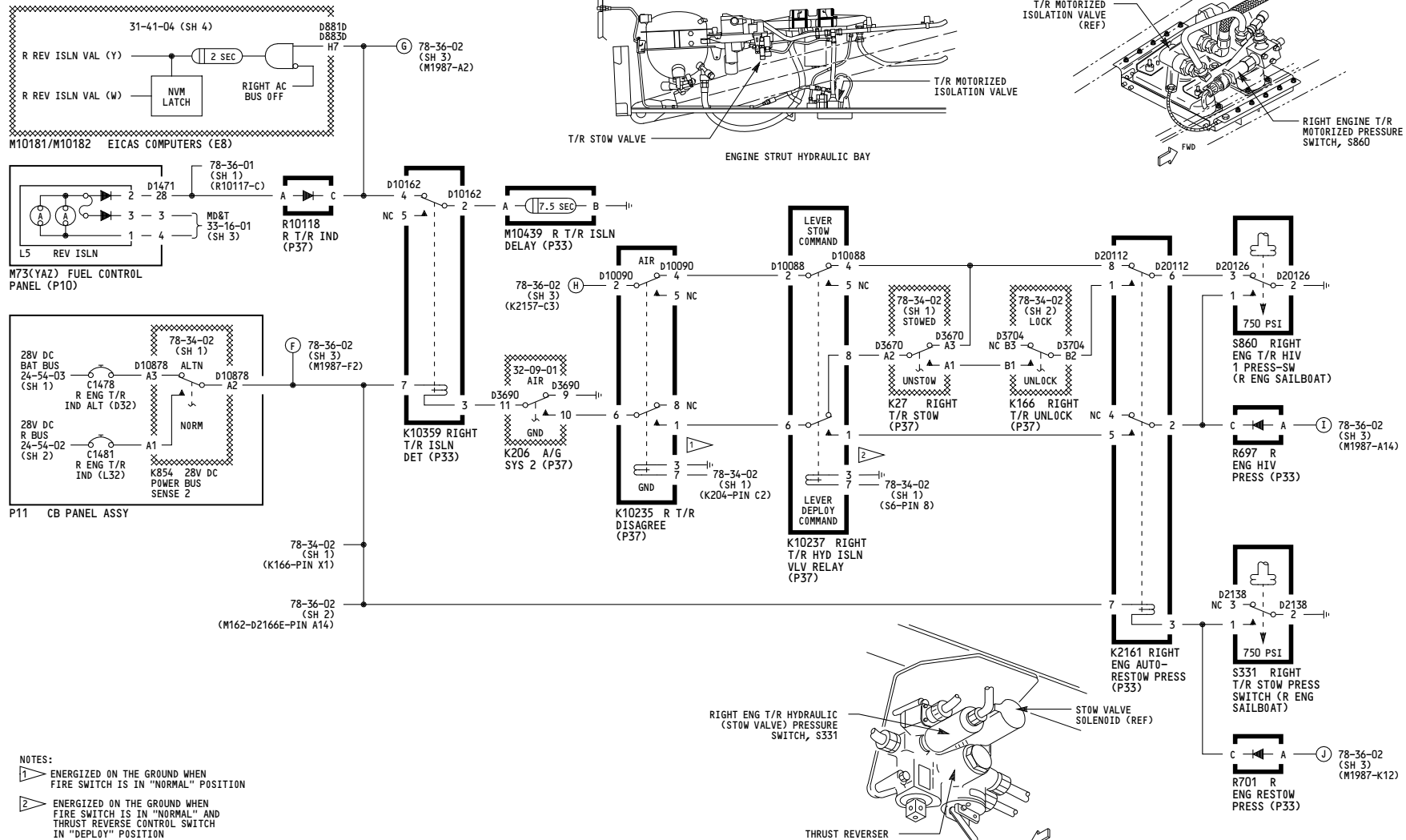
D280T232

78-36-01

Page 102.1
Sheet 6
Jan 21/2005


-A

622



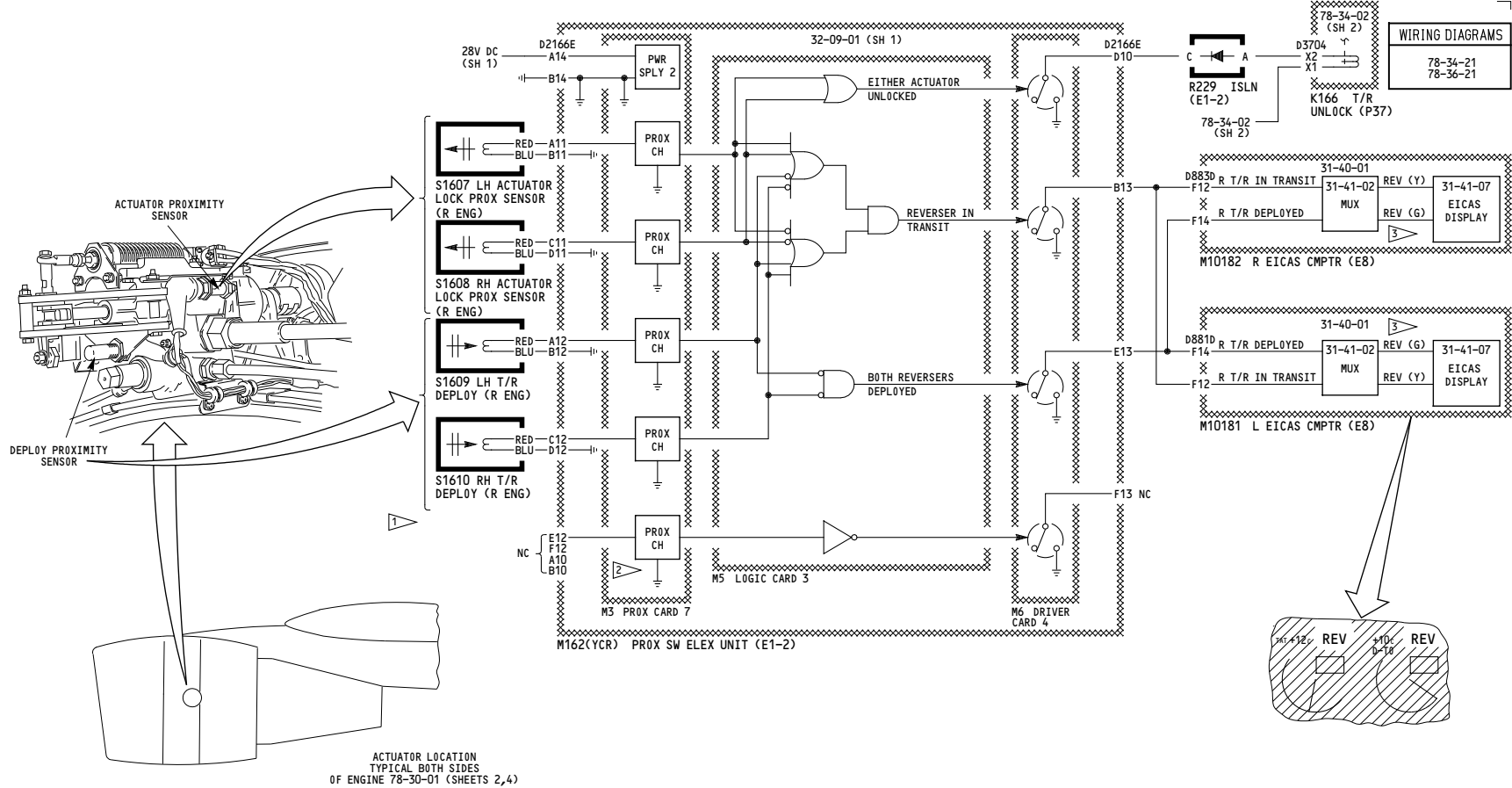
050-156, 162-166, 275-276

RIGHT ENGINE THRUST REVERSER INDICATION

Incorporates
 78-0051FAA
 78-0062 R04

78-36-02

Page 101.1
Sheet 1
Jan 21/2005



NOTES:

- 1 ARROWS SHOW POSITION OF TARGET WHEN ACTUATOR IS UNLOCKED AND THRUST REVERSER IS DEPLOYED
- 2 LOGIC "1" = TARGET FAR
LOGIC "0" = TARGET NEAR
- 3 IF BOTH DISCRETES SET, THEN REV (G) WILL BE DISPLAYED

050-156, 162-166, 275-276

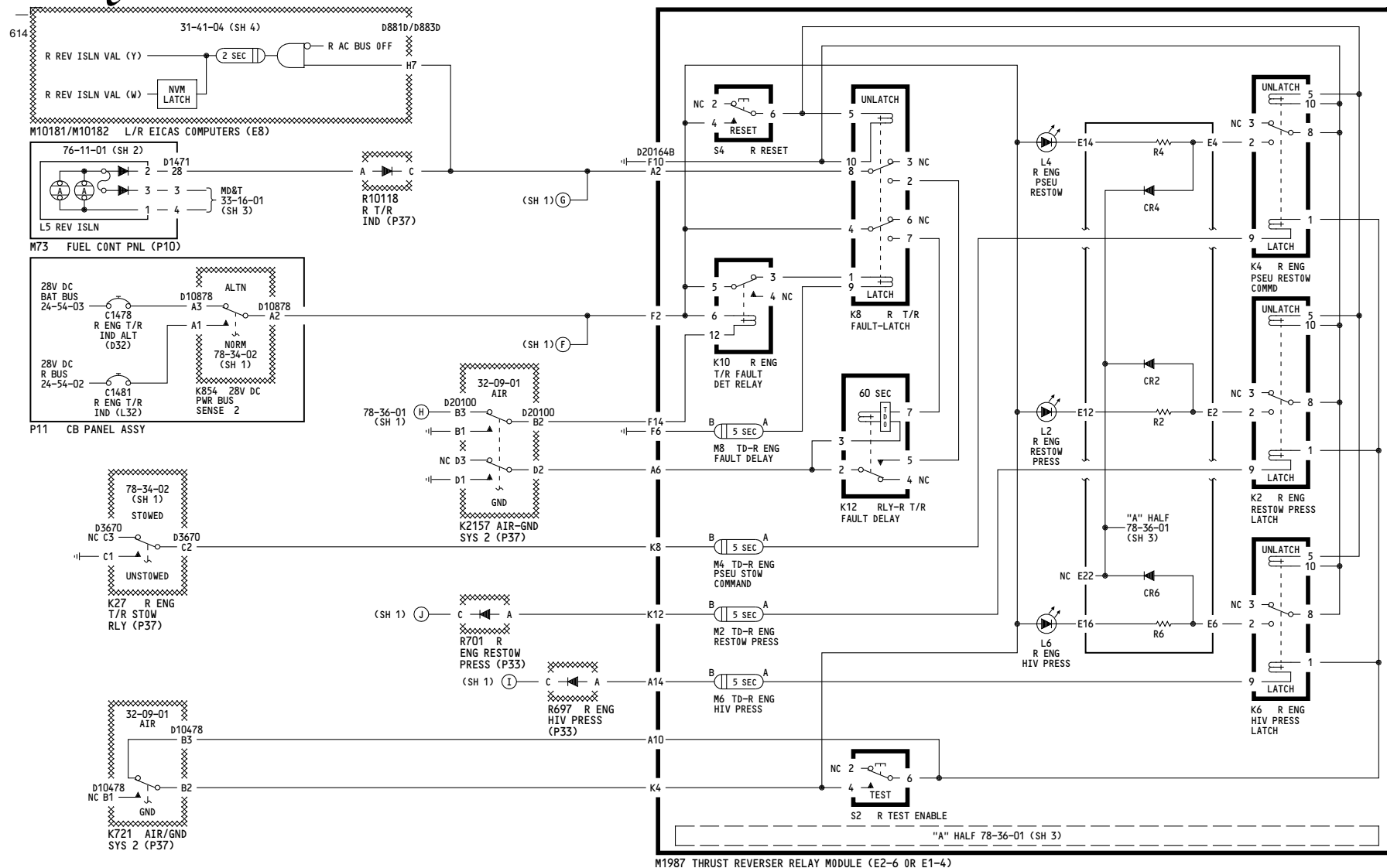
RIGHT ENGINE THRUST REVERSER INDICATION

Incorporates
78-0062 R04

D280T232

78-36-02

Page 101.1
Sheet 2
Jan 21/2005



M1987 THRUST REVERSER RELAY MODULE (E2-6 OR E1-4)

Incorporates
78-0062 R04

050-156, 162-166, 275-276

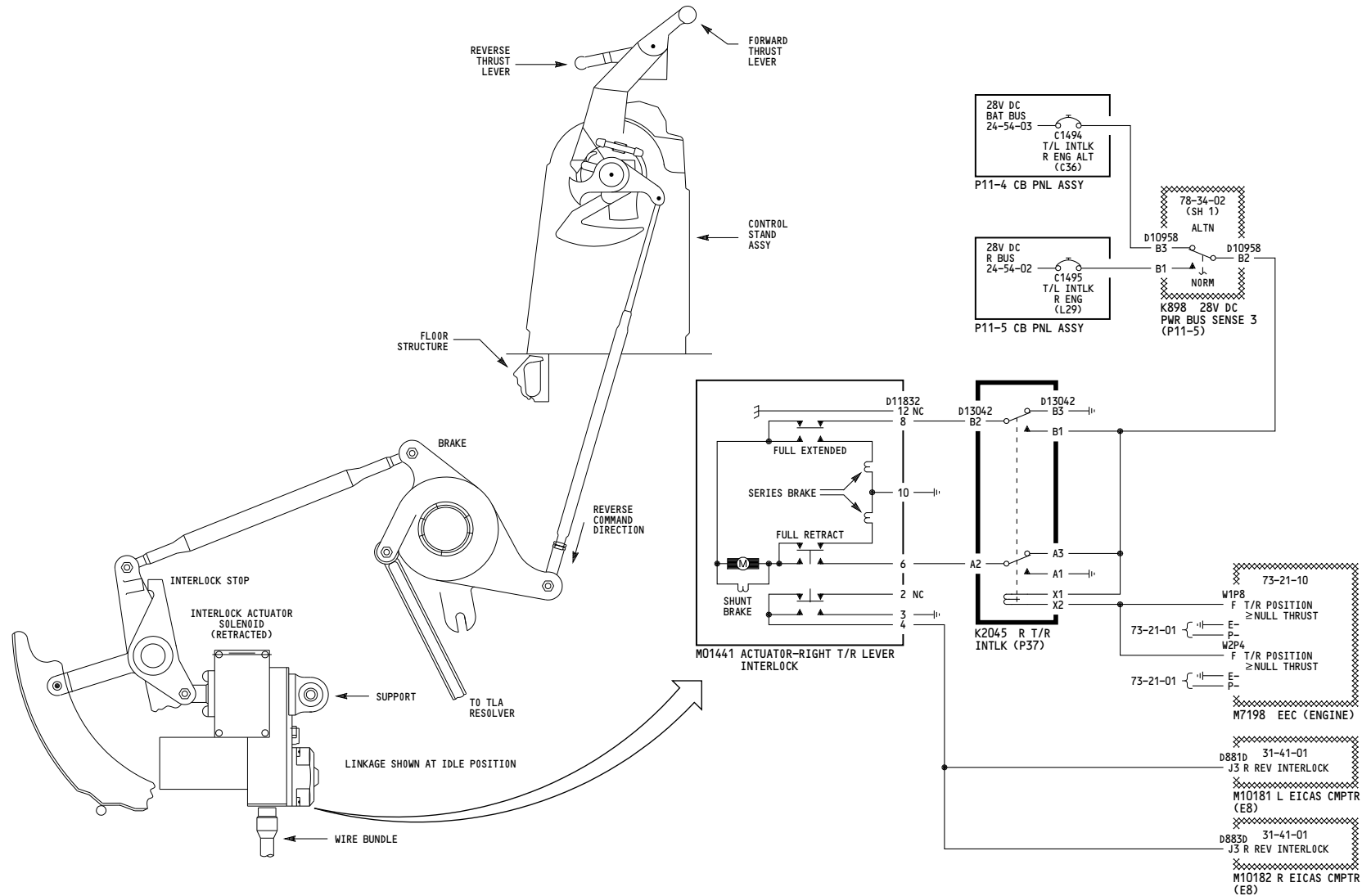
RIGHT ENGINE THRUST REVERSER INDICATION

D280T232

78-36-02

Page 101.1
Sheet 3
Jan 21/2005

-A
614



050-156, 162-166, 275-276

**RIGHT ENGINE THRUST
REVERSER INDICATION**

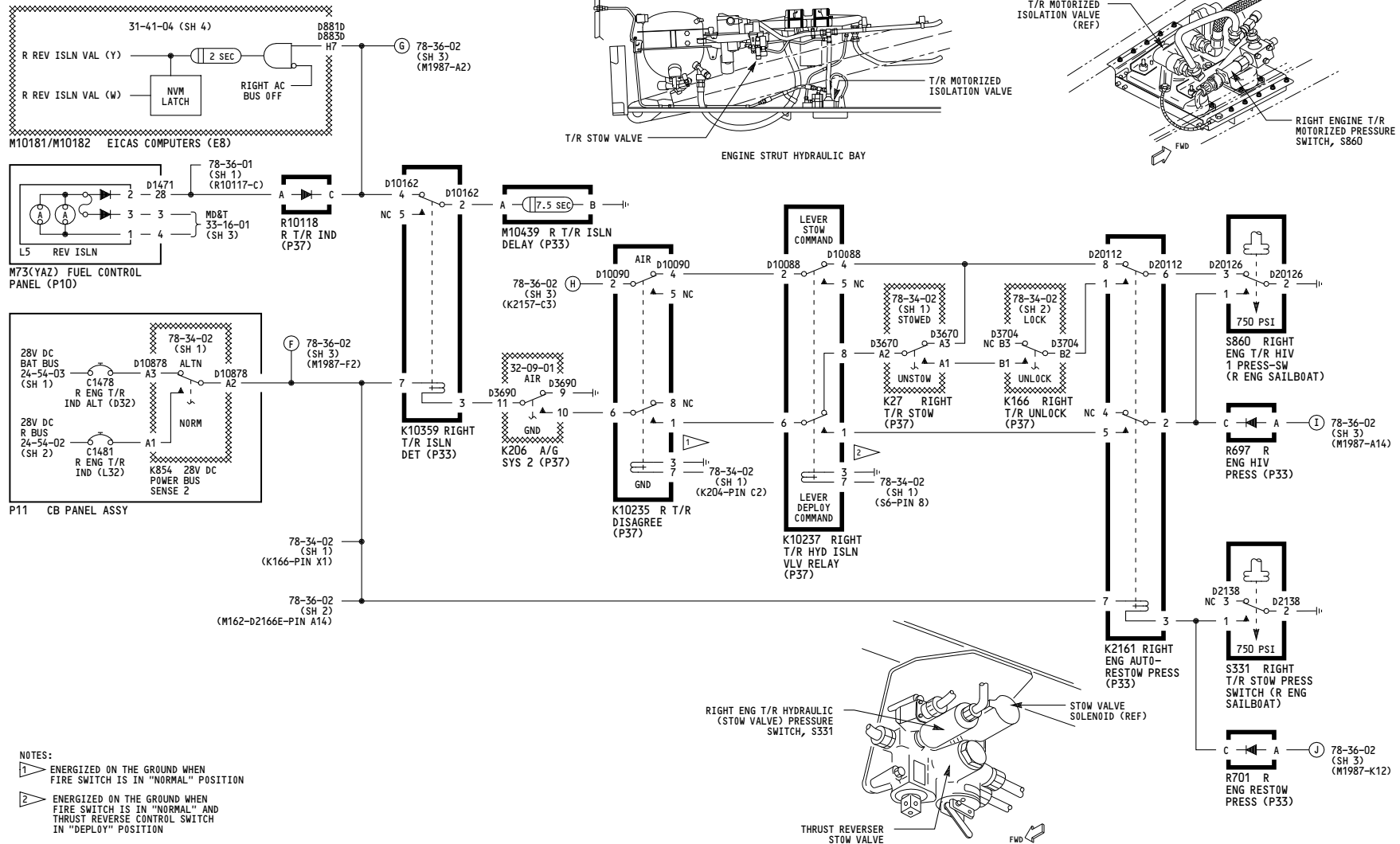
Incorporates
78-0062 R04

D280T232

78-36-02

Page 101.1
Sheet 4
Jan 21/2005

626



157, 167, 277-280

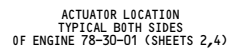
RIGHT ENGINE THRUST REVERSER INDICATION

Incorporates
78-0062 R04

D280T232

78-36-02

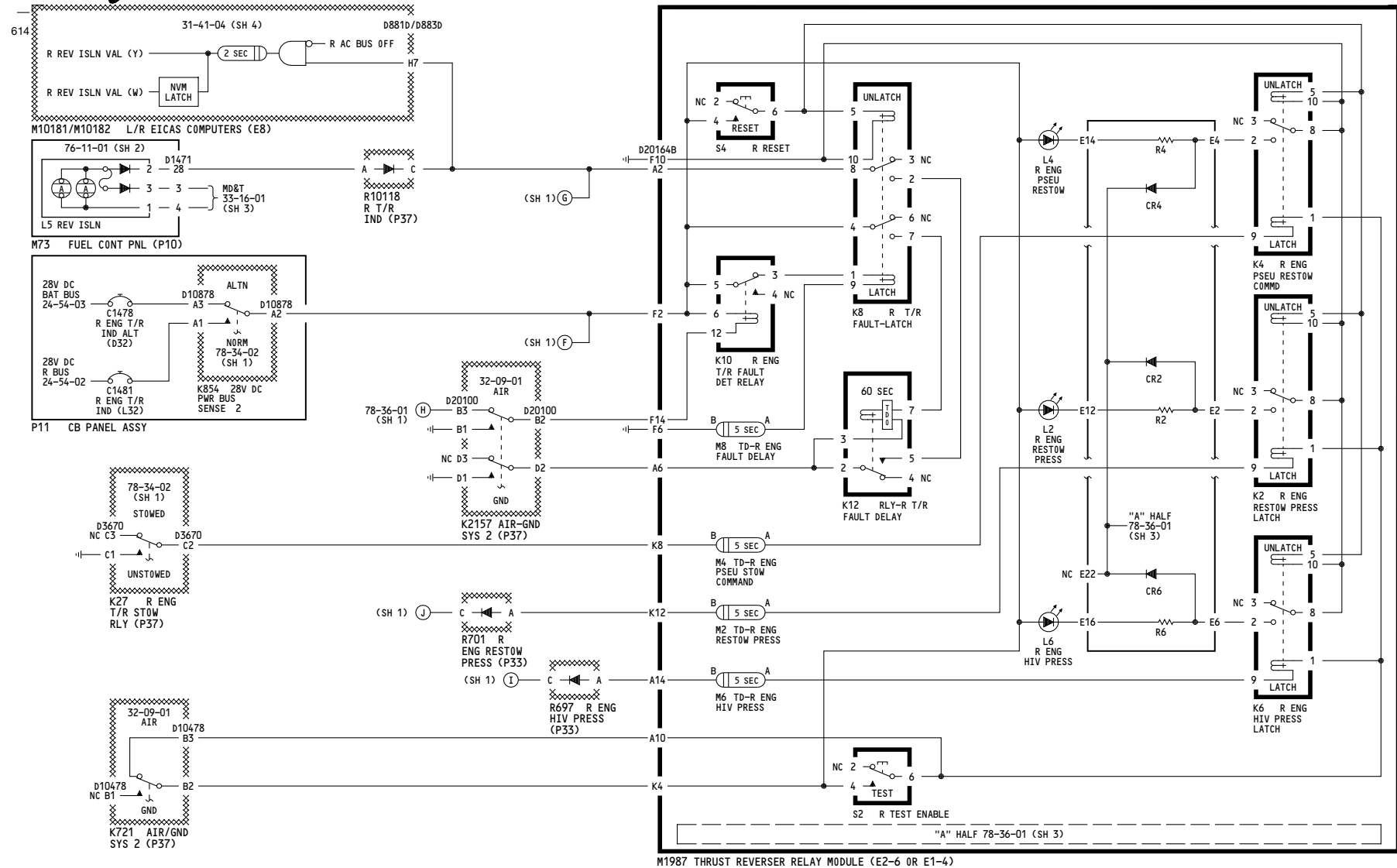
Page 102.1
Sheet 1
Jan 21/2005



- 1 ARROWS SHOW POSITION OF TARGET WHEN ACTUATOR IS UNLOCKED AND THRUST REVERSER IS DEPLOYED
- 2 LOGIC "1" = TARGET FAR
LOGIC "0" = TARGET NEAR
- 3 IF BOTH DISCRETES SET, THEN REV (G) WILL BE DISPLAYED

Incorporates
78-0062 R04

Page 102.1
Sheet 2
Jan 21/2005



M1987 THRUST REVERSER RELAY MODULE (E2-6 OR E1-4)

Incorporates
78-0062 R04

157, 167, 277-280

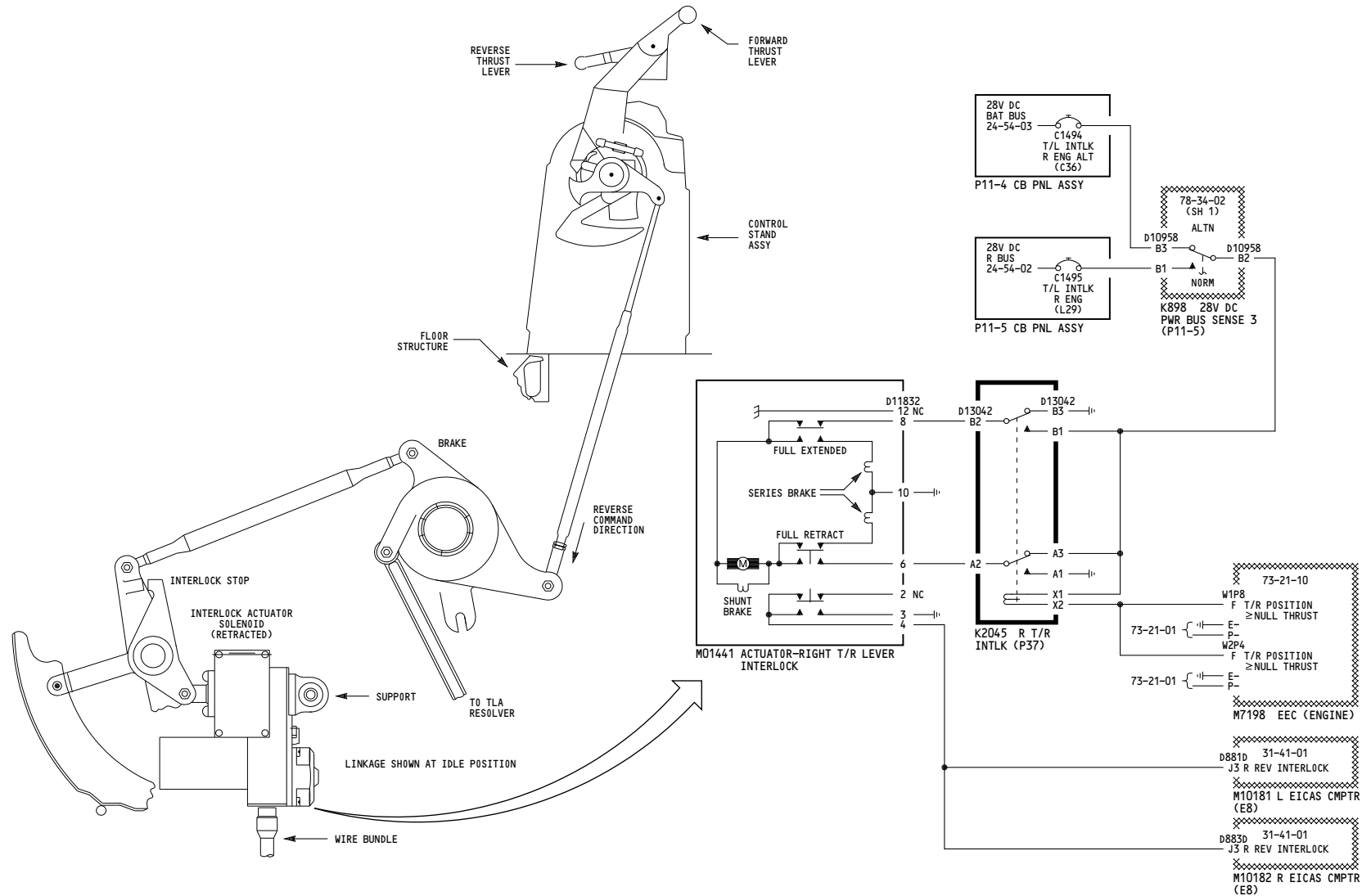
RIGHT ENGINE THRUST REVERSER INDICATION

D280T232

78-36-02

Page 102.1
Sheet 3
Jan 21/2005

-A
614



157, 167, 277-280

**RIGHT ENGINE THRUST
REVERSER INDICATION**

Incorporates
78-0062 R04

D280T232

78-36-02

Page 102.1
Sheet 4
Jan 21/2005