

STATION		<div style="display: flex; align-items: center; justify-content: center;"> <div style="margin-right: 10px;">SAS</div> <div style="text-align: center;"> BOEING 767 TASK CARD </div> </div>				BOEING CARD NO. 51-001-01	
TAIL NO.						AIRLINE CARD NO.	
DATE							
SKILL	WORK AREA	RELATED TASK	INTERVAL	PHASE	MPD REV	TASK CARD REVISION	
AIRPL	FUSELAGE		1C	11212	012	AUG 22/09	
TASK		TITLE		STRUCTURAL ILLUSTRATION REFERENCE		APPLICABILITY	
CHECK/INSP		FUSELAGE DRAIN VALVES				AIRPLANE ENGINE	
						ALL ALL	
ZONES		ACCESS PANELS					
100							
MECH	INSP	MPD ITEM NUMBER					
		<p>VISUALLY INSPECT ALL FUSELAGE DRAIN VALVES AND PORTS FOR OBSTRUCTIONS. CLEAN AS REQUIRED. 51-41-00-2A</p> <p>1. <u>Examine and Clean the External Drain Holes and Drain Valves</u> (Fig. 201)</p> <p>A. References</p> <p style="margin-left: 40px;">(1) AMM 51-41-01/401, Fuselage Drain Valve</p> <p>B. Consumable Materials</p> <p style="margin-left: 40px;">(1) B00402 Cleaner - MIL-PRF-87937</p> <p style="margin-left: 40px;">(2) B00003 Cleaner - GMC 528B</p> <p style="margin-left: 40px;">(3) G00034 Cheesecloth</p> <p>C. Access</p> <p style="margin-left: 40px;">(1) Location Zone 100 Lower Half of Fuselage</p> <p>D. Procedure - Examine the Drain System</p> <p><u>NOTE:</u> Examine the external drain holes and drain valves regularly. If it is necessary, clean the drain holes and valves. Refer to the Clean the Drain Holes and Drain Valves paragraph. If it is necessary, repair the leveling compound. Refer to the Repair the Drainage Leveling Compound task.</p> <p style="margin-left: 40px;">(1) Examine the drain valves to make sure they are clean and operate correctly.</p>					
EFFECTIVITY		CHECK/INSP		FUSELAGE DRAIN VALVES			
		51-41-00-2A		51-001-01 PAGE 1 OF 4 AUG 22/09			

4
2
5
3

SAS

767
TASK CARD

BOEING CARD NO.

51-001-01

AIRLINE CARD NO.

MECH INSP

- (2) Make sure the scuppers and tubes do not have blockage.
- (3) AIRPLANES WITH ANTI-FLUTTER CANISTERS ON THE CANTED PRESSURE DECK DRAIN TUBES;
Make sure the anti-flutter canisters do not have blockage.
 - (a) Access the anti-flutter canisters in the main landing gear wheel well.
 - (b) Disconnect hose on both ends of the cannister. Make sure the cannister and hoses have no blockage.

E. Procedure - Clean the Drain Holes and Drain Valves

- (1) Remove all unwanted materials from the drain holes with a cheesecloth that is moist with cleaner (MIL-PRF-87937 or GMC 528B).
- (2) Do these steps:
 - (a) Remove the drain valve (AMM 51-41-01/401).
NOTE: Remove the drain valve when you are out of the airplane.
 - (b) Remove all the unwanted materials from the drain valves with a cheesecloth that is moist with the cleaner.
 - (c) Install the drain valve (AMM 51-41-01/401).

EFFECTIVITY

CHECK/INSP

FUSELAGE DRAIN VALVES

51-41-00-2A

51-001-01

PAGE 2 OF 4 AUG 22/09

SAS

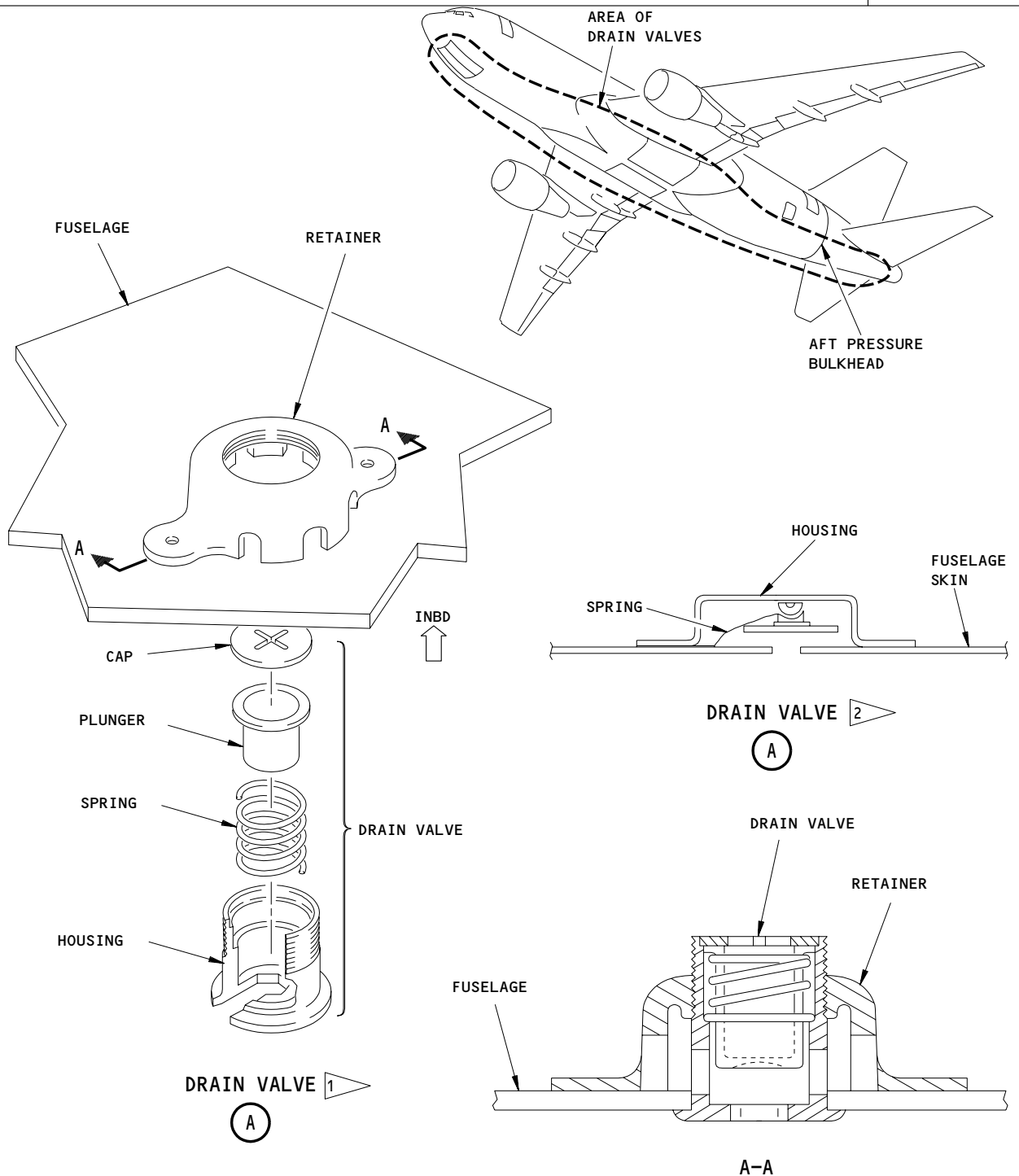


767
TASK CARD

BOEING CARD NO.

51-001-01

AIRLINE CARD NO.



- 1 AIRPLANES WITH DRAIN VALVES THAT ARE PLUNGER TYPE
2 AIRPLANES WITH DRAIN VALVES THAT ARE LEAF SPRING TYPE

External Drains
Figure 201

EFFECTIVITY

1871268

CHECK/INSP

51-41-00-2A

FUSELAGE DRAIN VALVES

51-001-01

PAGE 3 OF 4 AUG 22/09

SAS



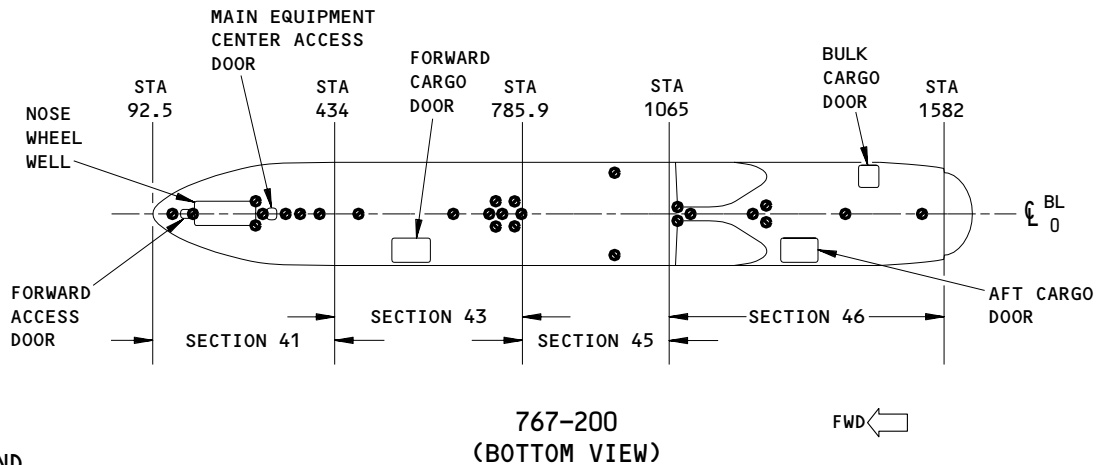
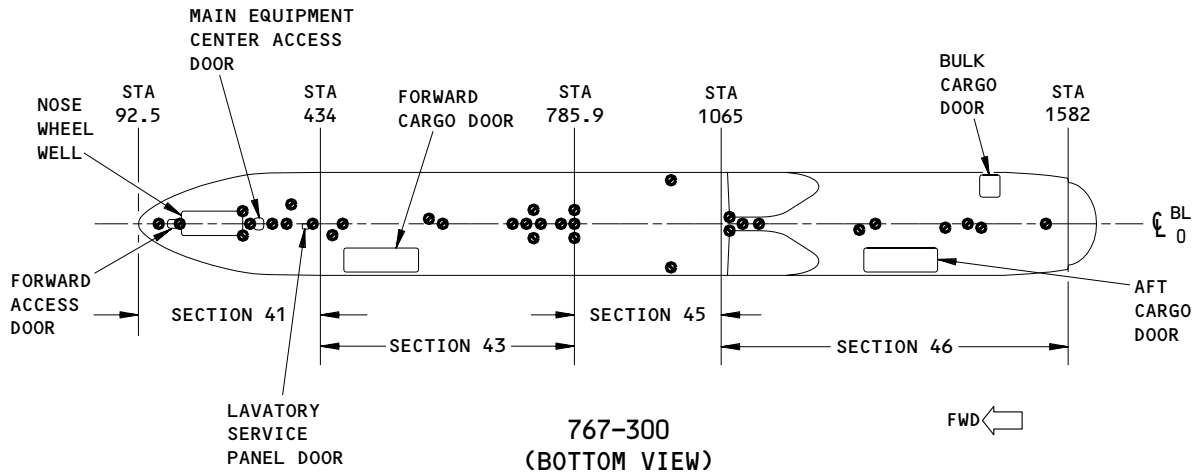
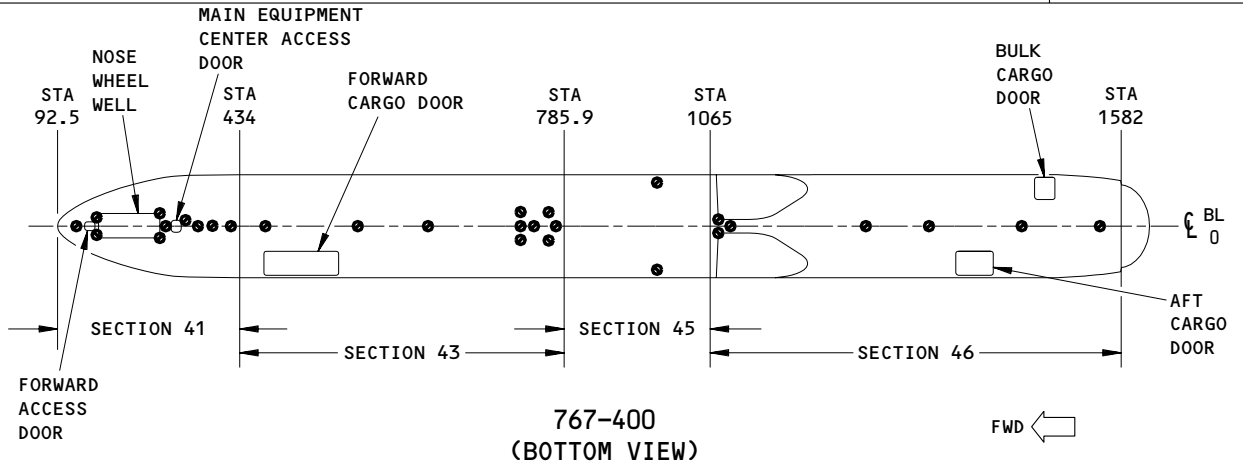
767

TASK CARD

BOEING CARD NO.

51-001-01

AIRLINE CARD NO.



LEGEND

● EXTERNAL DRAIN LOCATION

Typical External Drain Locations
Figure 202

EFFECTIVITY

K12219

CHECK/INSP

51-41-00-2A

FUSELAGE DRAIN VALVES

51-001-01

PAGE 4 OF 4 APR 22/99