

STATION
TAIL NO.
DATE



BOEING CARD NO. 53-001-01
AIRLINE CARD NO.

SKILL AIRPL	WORK AREA PASS CABIN	RELATED TASK	INTERVAL 2C	PHASE 12424	MPD REV 015	TASK CARD REVISION AUG 22/00	
TASK OPERATIONAL	TITLE RETURN AIR GRILLE LOUVERS	STRUCTURAL ILLUSTRATION REFERENCE			APPLICABILITY AIRPLANE ENGINE		
ZONES 200			ACCESS PANELS				
MECH	INSP					MPD ITEM NUMBER	

OPERATIONALLY CHECK ONE RETURN AIR GRILLE LOUVER PER ZONE (8 ZONES) FOR FREEDOM OF MOVEMENT. 21-23-05-2B

AIRPLANE NOTE: APPLICABLE TO AIRPLANES WITH METAL RETURN AIR GRILLES ONLY (LINE NO.'S 1-422).

1. 767-200/300 AIRPLANES WITH METAL RETURN AIR GRILLES;  
Return Air Grille Operational Check (Fig. 201)

A. Access

- (1) Location Zones  
221/222, 231/232, 241/242, 251/252 Passenger Cabin

B. Procedure

- (1) Remove the return air grille.
- (2) Make sure the louvers move easily and that the spring pulls them back to their minimum-open position.
- (3) Install the return air grille.

EFFECTIVITY	OPERATIONAL	RETURN AIR GRILLE LOUVERS
	21-23-05-2B	53-001-01 PAGE 1 OF 2 AUG 22/00

4  
3  
6  
3

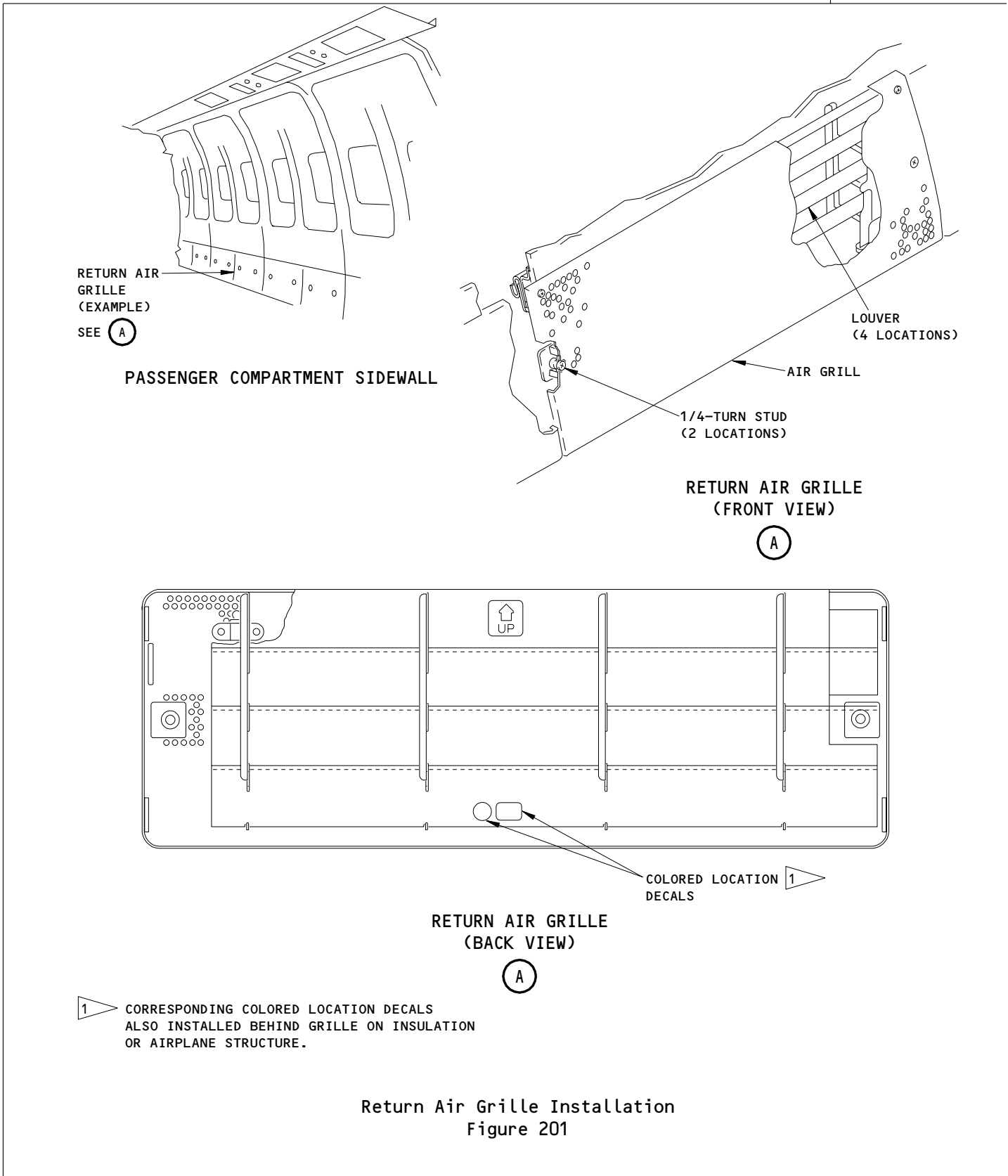
SAS



767

TASK CARD

BOEING CARD NO. 53-001-01
AIRLINE CARD NO.



Return Air Grille Installation  
Figure 201

4	EFFECTIVITY	OPERATIONAL	RETURN AIR GRILLE LOUVERS
3	767-200/300 AIRPLANES WITH METAL RETURN	21-23-05-2B	53-001-01
6	AIR GRILLES		PAGE 2 OF 2 AUG 22/00
4			

STATION
TAIL NO.
DATE

**SAS**  **BOEING**  
767  
TASK CARD

BOEING CARD NO. 53-003-01-1
AIRLINE CARD NO.

SKILL	WORK AREA	RELATED TASK	INTERVAL	PHASE	MPD REV	TASK CARD REVISION
AIRPL	W/B FAIRING	W-12-044-C1-1	03000 CYC	11515	018	AUG 22/08
TASK		TITLE		STRUCTURAL ILLUSTRATION REFERENCE		APPLICABILITY
CHECK/INSP		AFT W/W BULKHEAD SPHERICAL BEARING				AIRPLANE ENGINE
ZONES		ACCESS PANELS				
195		195CL				

MECH	INSP	MPD ITEM NUMBER					
		<p>VISUALLY INSPECT THE LEFT AFT WHEEL WELL BULKHEAD FILLET SEALS COMMON TO THE SPHERICAL BEARING ON THE FORWARD AND AFT FACES OF THE BULKHEAD SIDE FITTING FOR DISTRESSED SEALANT, DAMAGE, OR DETERIORATION WHICH WOULD INDICATE BEARING RACE ROTATION.</p> <p>AIRPLANE NOTE: SB767-53-0083 THIS TASK IS APPLICABLE TO AIRPLANE LINE NUMBERS 001 THROUGH 745 NOT INCORPORATING THIS SERVICE BULLETIN OR EQUIVALENT.</p> <p>REFERENCE STRUCTURAL REPAIR MANUAL 53-50-90, REPAIR 2 FOR REWORK INSTRUCTIONS IF REQUIRED.</p>					53-53-01-A

EFFECTIVITY	CHECK/INSP	AFT W/W BULKHEAD SPHERICAL BEARING
	53-53-01-A	53-003-01-1 PAGE 1 OF 1 AUG 22/08

4  
3  
6  
5

STATION
TAIL NO.
DATE

**SAS** **BOEING**  
 767  
**TASK CARD**

BOEING CARD NO. 53-003-01-2
AIRLINE CARD NO.

SKILL	WORK AREA	RELATED TASK	INTERVAL	PHASE	MPD REV	TASK CARD REVISION
AIRPL	W/B FAIRING	W-12-044-C1-2	03000 CYC	11515	018	AUG 22/08
TASK		TITLE		STRUCTURAL ILLUSTRATION REFERENCE		APPLICABILITY
CHECK/INSP		AFT W/W BULKHEAD SPHERICAL BEARING				AIRPLANE ENGINE
ZONES		ACCESS PANELS				
196		196CR				

MECH	INSP		MPD ITEM NUMBER
		<p>VISUALLY INSPECT THE RIGHT AFT WHEEL WELL BULKHEAD FILLET SEALS COMMON TO THE SPHERICAL BEARING ON THE FORWARD AND AFT FACES OF THE BULKHEAD SIDE FITTING FOR DISTRESSED SEALANT, DAMAGE, OR DETERIORATION WHICH WOULD INDICATE BEARING RACE ROTATION.</p> <p>AIRPLANE NOTE: SB767-53-0083 THIS TASK IS APPLICABLE TO AIRPLANE LINE NUMBERS 001 THROUGH 745 NOT INCORPORATING THIS SERVICE BULLETIN OR EQUIVALENT.</p> <p>REFERENCE STRUCTURAL REPAIR MANUAL 53-50-90, REPAIR 2 FOR REWORK INSTRUCTIONS IF REQUIRED.</p>	53-53-01-A

4 3 6 6	EFFECTIVITY	CHECK/INSP	AFT W/W BULKHEAD SPHERICAL BEARING
		53-53-01-A	53-003-01-2 PAGE 1 OF 1 AUG 22/08