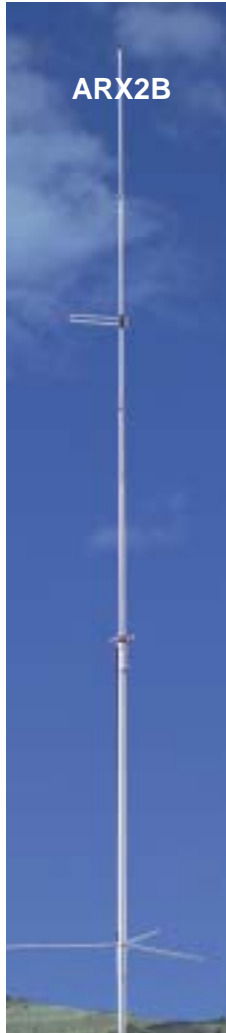




ARX450B



ARX220B



ARX2B

## Our Ringos are Number One

*Tough performers at a good price! The Ringo family of dependable, cost-effective antennas has served more hams - from novice to veteran extra - than any other amateur antenna made. Simple, straightforward design, light weight and quick, easy installation make the durable Ringo family right for you. Ringo's top performance and low cost mean more dB per dollar - an equation anyone can appreciate.*

## Ringo Ranger II

Our Ringo Ranger II has more gain, less windload, and more mechanical integrity than other two meter antennas. You'll quickly appreciate the benefits of this amazing antenna! Based on the original W1BX Ringo, the Ringo Ranger II is the latest design featuring three 5/8 wave radiating elements and an adjustable 1/8 wave phasing stub. The result is a very low angle of radiation over your coverage area.

The Ringo Ranger II has built-in lightning protection, UV-stabilized insulators, heavy wall tubing, improved decoupling radials to eliminate feedline radiation, and all-weather performance.

MODEL	ARX2B	ARX220B	ARX450B
Frequency, MHz:	135-160	222-225	435-450
SWR 1.2:1 Typical			
2:1 Bandwidth, MHz:	>3	>5	>10
Gain, dBi:	7.0	7.0	7.0
Power Rating, Watts FM:	1000	500	500
Radiation Angle, Deg.:	7	7	7
Horizontal Radiation			
Pattern, Degrees:	360	360	360
Ring Diameter, in (cm):	5 (12.7)	5 (12.7)	3.5 (8.9)
Radiator Base Dia, in (cm):	.75 (1.9)	.75 (1.9)	.50 (1.2)
Height, ft. (m):	14 (4.3)	9.3 (2.8)	4.9 (1.5)
Mast Size Range, in (cm):	1.0-1.25 (2.54-3.1)	1.0-1.25 (2.54-3.1)	.75-.88 (1.9-2.22)
Radial Length, in (cm):	20.5 (52.1)	13.75 (33.7)	6.75 (17.1)
Wind Load, ft <sup>2</sup> (m <sup>2</sup> ):	0.5 (0.05)	0.3 (0.03)	0.2 (0.02)
Weight, lb (kg):	6 (2.7)	5 (2.3)	1 (.45)

### Some hams comment on the ARX2B:

*"Since I put this antenna up I have received many compliments on the improvement of my signal." (N3LHP)*

*"The only antenna I ever installed that worked like it should the first time." (N7PGH)*

*"ARX2B is a good antenna for my use on 2 meters FM...Several on the air in my area." (N9OPL)*

*"ARX2B...the best antenna." (XE2CLB)*



AR2



AR6



AR10

## Ringo

These are the original W1BXFM Ringos. If you want a combination of compact size, wide bandwidth, a low radiation angle, these economical antennas are just for you. Since radials are not needed, you can even use our Ringos indoors. Our Ringos are 1/2 wave and include built-in lightning protection. Put up one of these easily installed antennas and start enjoying! FM

MODEL	AR2	AR6	AR10	AR450
Frequency, MHz:	135-160	50-54	28-29.7	440-460
SWR 1.2:1 Typical:				
2:1 Bandwidth, MHz:	10	2	>1.5	20
Gain, dBi:	3	3	3	3
Power Rating, Watts FM:	1000	1000	1000	500
Radiation Angle, Deg.:	16	16	16	16
Horizontal Radiation				
Pattern, Degrees:	360	360	360	360
Ring Diameter, in (cm):	5 (12.7)	13 (33)	13 (33)	3.5 (8.9)
Radiator Base Dia, in (cm):	.75 (1.9)	1 (2.5)	1 (2.5)	.5 (1.3)
Height, ft. (m):	3.9 (1.2)	10.1 (3.1)	17.6 (5.36)	1.4 (.43)
Mast Size Range, in (cm):	1-1.25 (2.54-3.1)	1-1.25 (2.54-3.1)	1-1.25 (2.54-3.1)	.75-.88 (1.9-2.22)
Wind Load, ft <sup>2</sup> (m <sup>2</sup> ):	.21 (.02)	.37 (.03)	.58 (.06)	.1 (.01)
Weight, lb (kg):	1.5 (.68)	2.5 (1.1)	4 (.8)	1 (.45)