

Bedieningsknoppen
(van links naar rechts)
Toonregelaar
Netschakelaar, volume
Golfbereikschakelaar
Afstemming

Voeding.
Wisselstroom 110, 125, 145, 200, 220 en 245 V.

Golfber. Buizen
KG 16-52
B.spr. 24, 5-32, 5M
MG 180-585
LG 693-2000 K
B1 3CH 42
B2 JAP 42
B3 EBC 41
B4 BL 41
B5 AZ 41
B6 EE 4

Weerst.	Condens.	Spoelen
1	1,2kΩ	1' 60Ω
2	100Ω	2 500
3	33 "	3 100
4	820kΩ	4 var.
5	47 " "	5 "
6	33 " "	6 30pF
7	34 " "	7 5,8
8	1MΩ	8 39
9	1 " "	9 30
10	1,5 " "	10 30
11	10kΩ	11 30
12	56 " "	12 22k
13	275 " "	13 30
14	75 " "	14 96
15	470 " "	15 232
16	1,5MΩ	16 96
17	150k "	17 235
18	820 " "	18 30
19	220 " "	19 100
20	47 " "	20 33
21	500 " "	21 47k
22	180 " "	22 47 "
23	220 " "	23 220
24	68 " "	24 175
25	1MΩ	25 30
26	1 " "	26 30
27	2,2 " "	27 400/575
28		28 175
29		29 22
30		30 30
31		31 47k
32		32 115
33		33 115
34		34 115
35		35 115
36		36 22
37		37 0,15uF46
38		38 0,1 " 47
39		39 33kpF48
40		40 22k
41		41 47
42		42 22k
43		43 10 "

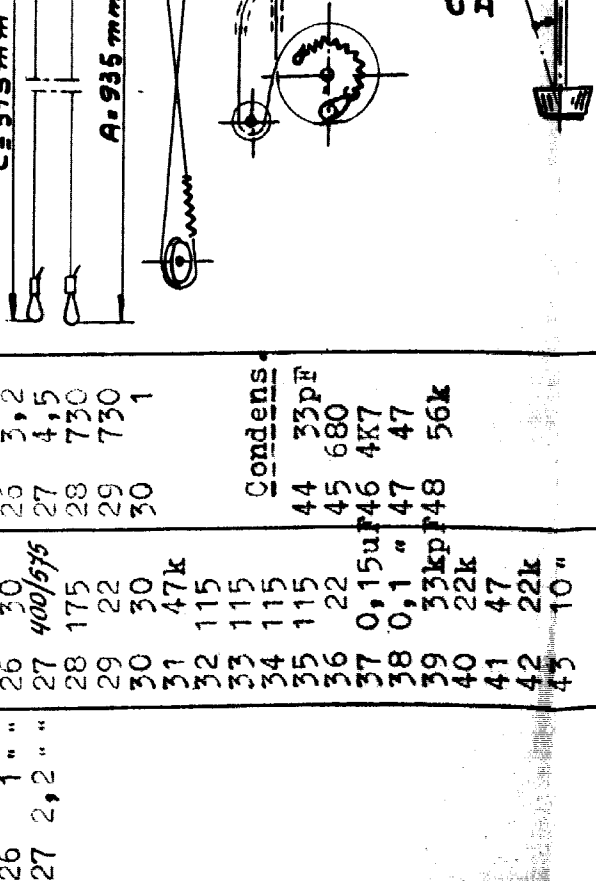
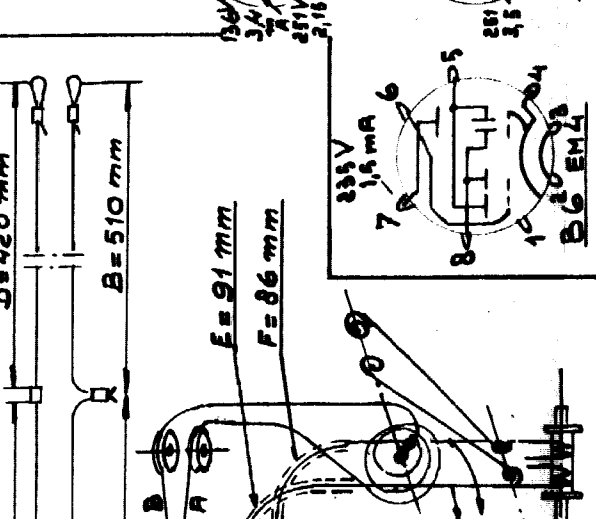
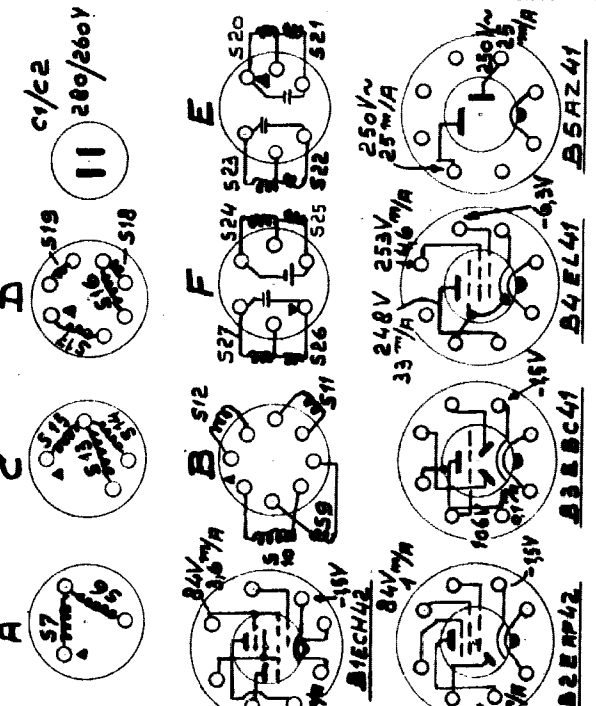
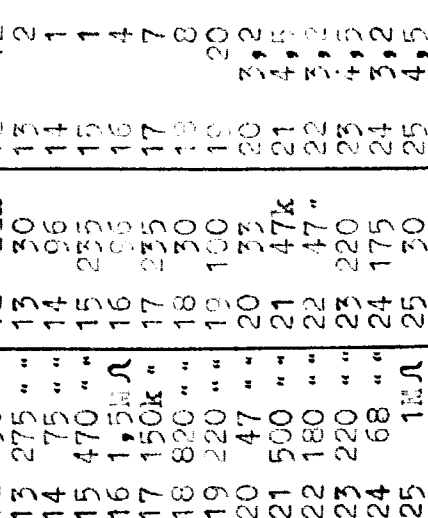
Principinstructies en smalen

Ver.	Ant. en Osc. kr.
12kHz	0/25/27
5,7 "	0/24
12,35 "	0/18/27
1550kHz	0/26/27
545 "	0/27
405 "	0/30/11
160 "	0/28

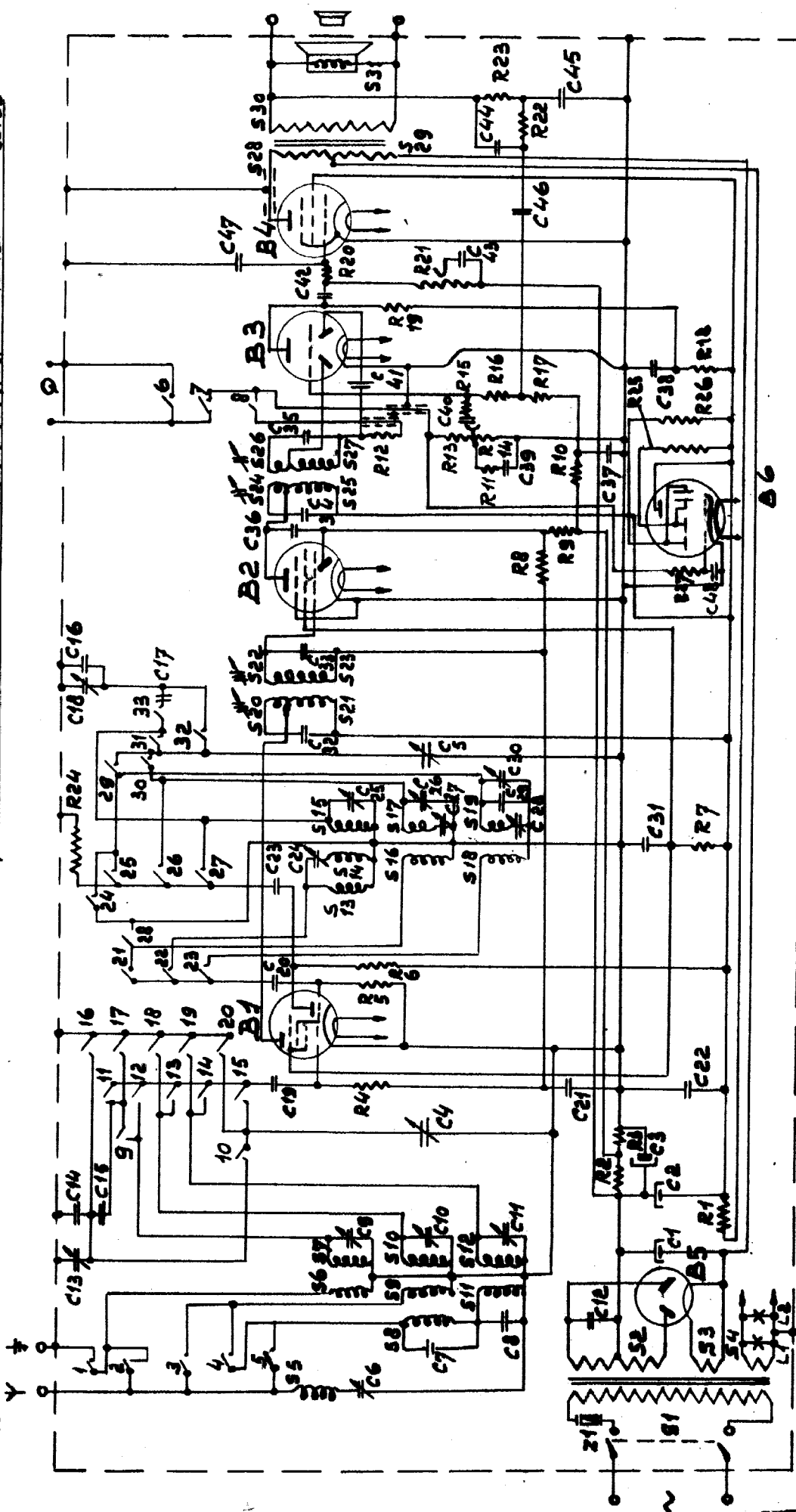
Zuigkring 06 of minimum output
D=420 mm

MF kringen:
Gem. signaal van 452 kHz via 3200pF aan g1 B1
Alle MF yzerkernen byna geheel uitdraaien.

Nr.	SO pF over byies.
1	S 24-25
2	S 25-27
3	S 20-21
4	S 22-23



S: 1.2.3.4.5.6.7.8.9.10.11.12 13.14.15.16.17.18.19 20.21.22.23 24.25.26 27.28.29.30.31
 C: 6. 7.8.9.10.11.12.13.14.15.16.17.18.19.20.21.22 23.24.25.26.27.28.29.30.31.32.33.34.35.36.37.38.39.40.41.42.43.44.45
 R: 1.2.3. 4 5.6. 7 24



	Segment 1			Segment 2			Segment 3																														
	1	2	3	4	5	6	7	8	9	10	11	12	13	14	15	16	17	18	19	20	21	22	23	24	25	26	27	28	29	30	31	32	33				
B.S.																																					
K.G.																																					
M.G.																																					
L.G.																																					
Gr.																																					

VAN DAALEN BROS
 Van der Ploeg 8 - Arnhem