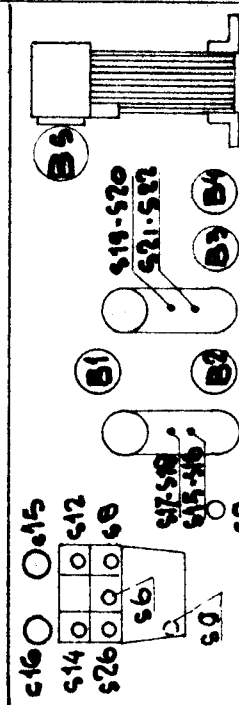
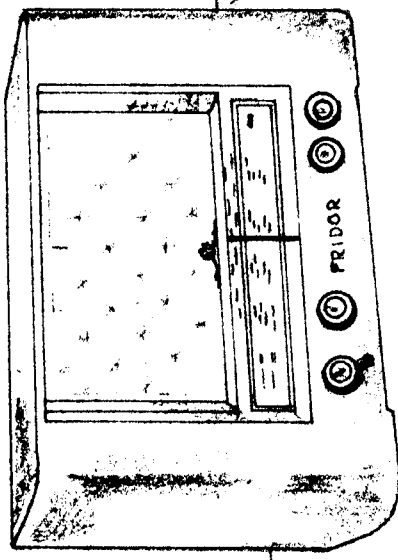


Weerst.	Condens.	Speeelen.
1	1,2kΩ	1 650hm
2	12k	2 500 "
3	8,2k	3 1 " "
4	820k	4 1 " "
5	33k	5 1,7 " "
6	33k	6 1 " "
7	1,5M	7 48 " "
8	56k	8 2,8 " "
9	47k	9 24-8"
10	1M	10 1,5"
11	27k	11 1 " "
12	50k	12 1 " "
13	450k	13 4,2"
14	1k8	14 11 " "
15	120k	15 2,9"
16	50k	16 4,8"
17	100k	17 2,9"
18	680k	18 4,8"
19	1k	19 2,9"
20	150k	20 4,8"
21	39k	21 2,9"
22		22 4,8"
23		23 900"
24		24 1 "
25		25 24-8"
26		26 1 "
27		27
28		
29		
30		
31		
32		
33		
34		

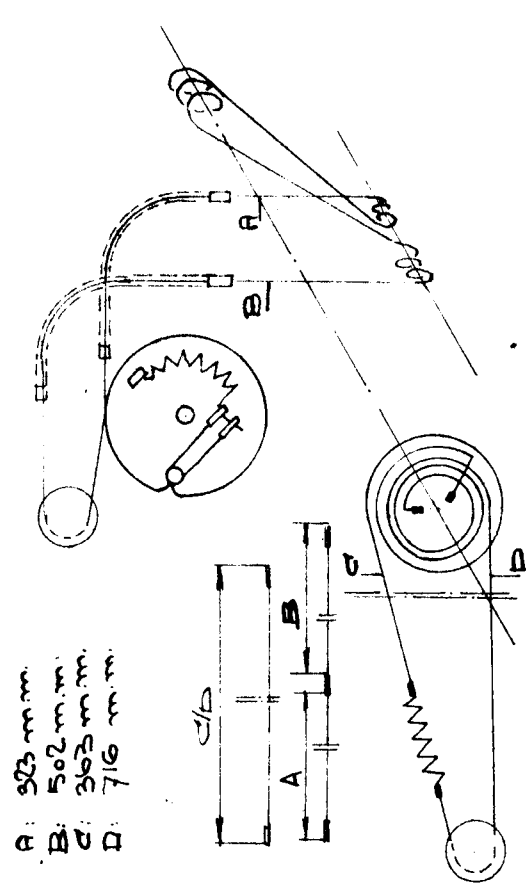
Golfber.	Buizen	Bedieningsknoppen
KG 2	16,5-50 Mtr.	(van links naar rechts)
MG	185-580 "	Volumereg. en netschakel
LG	1052-1973 "	Gramfoon-radio schak.
B1	ECH 42	Toonregelaar
B2	EAF 42	Golfbereikschakelaar
B3	EBC 41	Afstemming
B4	EL 41	
B5	AZ 41	
		Voeding
		110, 125, 145, 200, 220, 245

**Triminstructies en sporen**

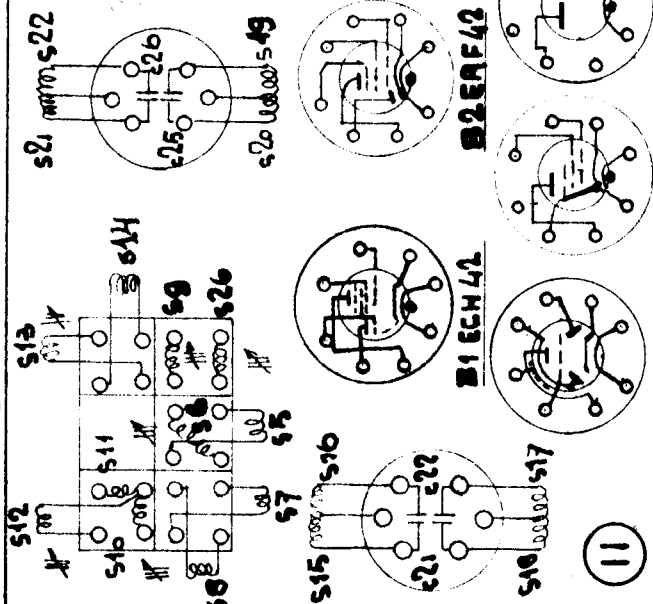
MF kringen:	Golf. sch. MG.	Ant. en Osc. kct.
Gem. signaal van 452 kHz	Ber Wyzer Gem. Afp.	
via 3300pF aan g1 van B1	op sign.	
MF yzerkernen uitdraaien	KG2 48,4M	5,2MHz S12
Varco in min. stand.		S6
	1 S21-S22-C26	C15
	2 S19-S20-C25	S14
	3 S15-S16-C21	S8
	4 S17-S18-C22	C9
		S9



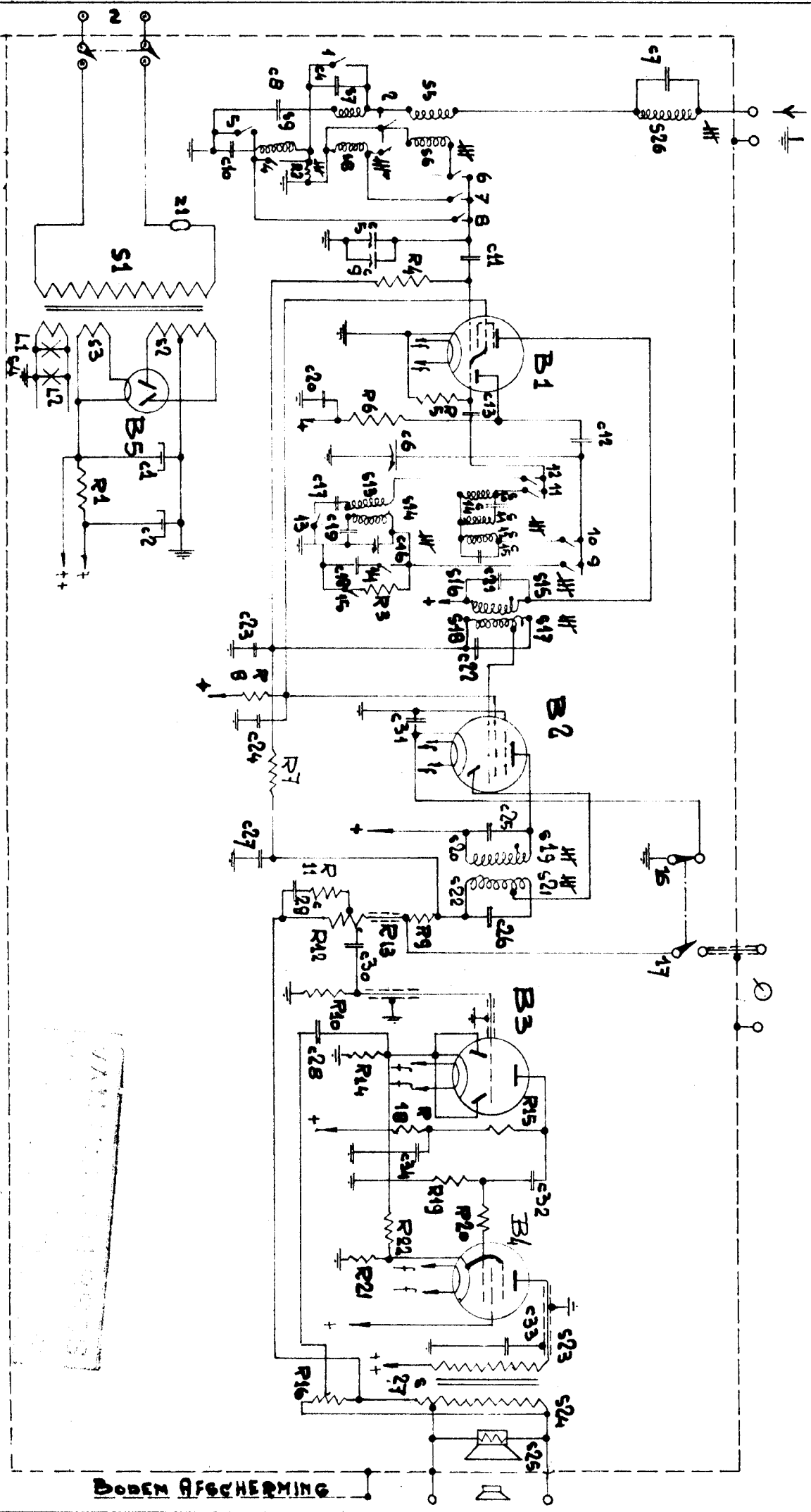
S26 van sperkring op min. output.



- A: 323 mm.
- B: 502 mm.
- C: 363 mm.
- D: 716 mm.



C1	1.6	10	5.1.9	0.1.12	6.1.14	7.2.19	10.15.18	21.24	25.27	29.34	20	34.32	33	
S	5.7.10.11.12	9	4	2.3.4	5.6	1	3	8	7	11.9.12.13	10	14.15.18	19.20.22.21	23
P													16	



SCHEMATEL 1

SCHEMATEL 2

1	2	3	4	5	6	7	8	9	10	11	12	13	14	15
KA	.	.	.	.	.	.	.	.	.	.	.	.	.	.
MA	.	.	.	.	.	.	.	.	.	.	.	.	.	.
LG	.	.	.	.	.	.	.	.	.	.	.	.	.	.

Radio	16	17
GRAM	.	.

A. J. P.