

## *Hitachi IEEE1394 Digital Camera Software*

---

### *Installing the Driver And Use of the Viewer Software*

*Hitachi IEEE1394 DIGITAL CAMERA SOFTWARE  
(Driver Installation & Viewer Software Manual)*

## Installing and using the Software for the Hitachi IEEE-1394 Digital Camera

The following directions are for the use and control of the viewer software (\*\*View.exe) and for installation of the driver software for the Hitachi IEEE1394 Digital Camera.

### 1. Operational Requirements

CPU:	Intel Celeron 533MHz or more
Memory:	256M or more
OS:	Windows98SE / Me /2000 /XP
Display Adapter:	Covered 24bitRGB color or more
Interface:	For OHCI IEEE1394 Interface PCI Board For OHCI IEEE1394 Interface PC Card

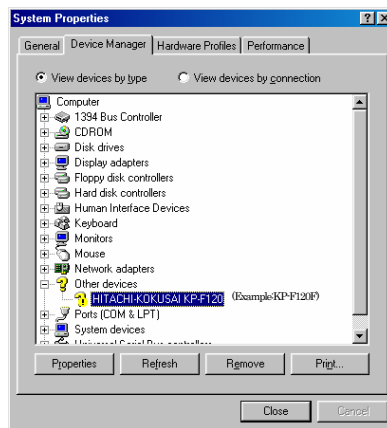
### 2. Installing the Driver

The driver needs to be installed for the Hitachi IEEE 1394 digital camera before the Viewer Software can be used.

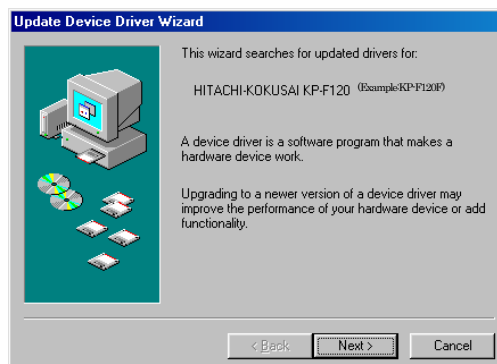
#### 2.1. Windows98SE / Me Installation

Following are the directions for the installation of the driver by Windows98SE / Me.

- ① Connect the Hitachi IEEE1394 Digital Camera to the PC with the IEEE1394 cable.
- ② Right Click on “My Computer Icon” and then click on the “System Properties” tab at the bottom of the popup menu that is displayed.
- ③ From the “System Properties” menu, select the “Device Manager” Tab and confirm that the connected device (HITACHI-KOKUSAI \*\*\*) is displayed under “Other Devices”.



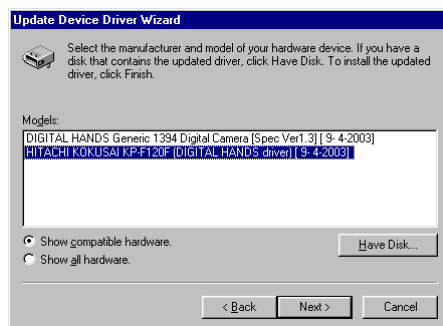
- ④ Select the “HITACHI-KOKUSAI \*\*\*” device and click the “Properties” button on lower left. After that click “Update” button in the “Properties”, it will show the “Update Device Driver Wizard”. Then click the “Next button”



- ⑤ Check “Display a list of all the drivers in a specific location, so you can select the driver you want” from the box. Click the “Next” button.



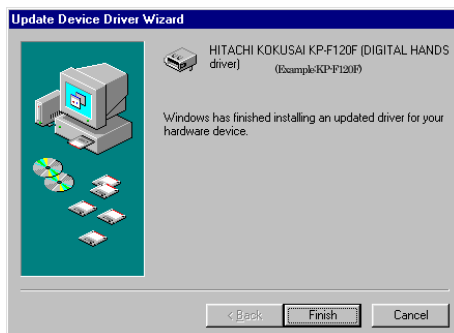
- ⑥ Click “Have Disk” button and select the “dh\_fwdev.inf” on “Driver” directory that is on the supplied CD tat came with the camera. Choose “HITACHI KOKUSAI \*\*\*” on “Models” and Click “Next” button. (If the driver shown above doesn’t show, select the “Show all hardware” bullet



- ⑦ Check to see “HITACHI KOKUSAI \*\*\*” in the box and then click the “Next” button.



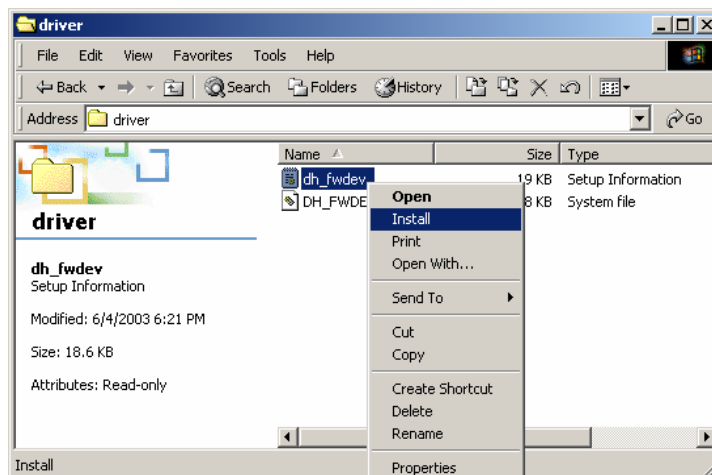
- ⑧ When the “HITACHI KOKUSAI \*\*\*” Digital Hands driver shows in the box, click the “Finish” button to complete the driver installation.



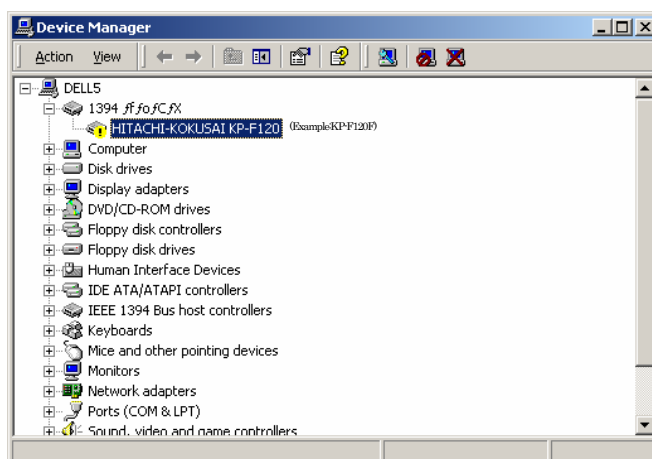
## 2.2. Windows2000 Installation

The following are the directions for the installation of the driver by Windows2000.

- ① Make sure the IEEE-1394 cable is not connected between the PC and the Hitachi IEEE 1394 Digital Camera.
- ② Insert the supplied CD, select the Driver folder on the CD and Right Click on the file “dh\_fwdev.inf”. Choose ”Install” from the drop down text menu and then install the driver.



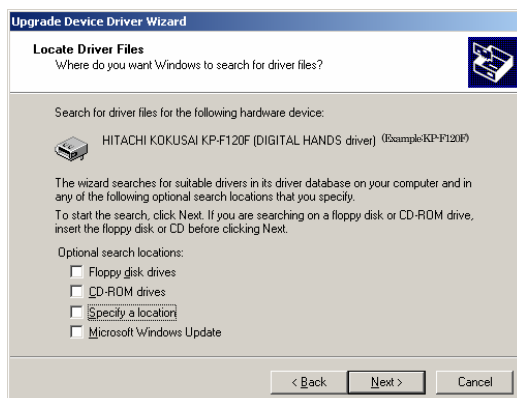
- ③ Connect the IEEE-1394 cable between the PC and the Hitachi Digital Camera.
- ④ The camera will be recognized and the driver will be automatically loaded. You can confirm proper installation by Right Clicking on “My Computer”, select the “System Properties” tab, and select “Device Manager”.
- ⑤ After that click the “Hardware” tab in the “System Properties” menu and check that the device is recognized. If “HITACHI KOKUSAI \*\*\* “ is displayed as shown below, the driver has been correctly installed.



- ⑥ For proper operation, the state of driver needs to be upgraded. Click on the “HITACHI KOKUSAI \*\*\*” driver line that is displayed.
- ⑦ The “Upgrade Device Driver Wizard” will automatically display and show the window in the figure below indicating the current driver for the “HITACHI KOKUSAI \*\*\*” driver. Check “Search for a suitable driver for my device [recommended]” and then click the “Next” button.



- ⑧ On the “Locate Driver Files” menu, make sure that none of the boxes under the heading of “Optional search location” are checked, and then click the “next” button.



- ⑨ When the “Driver Files Search Results” menu is displayed, click the “Next” button to complete the search of the driver file.



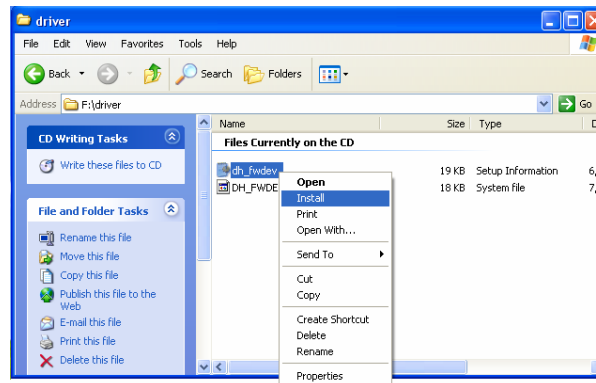
- ⑩ The “Completing the Upgrade Device Driver Wizard” menu will be displayed, click the “Finish” button to complete the installation.



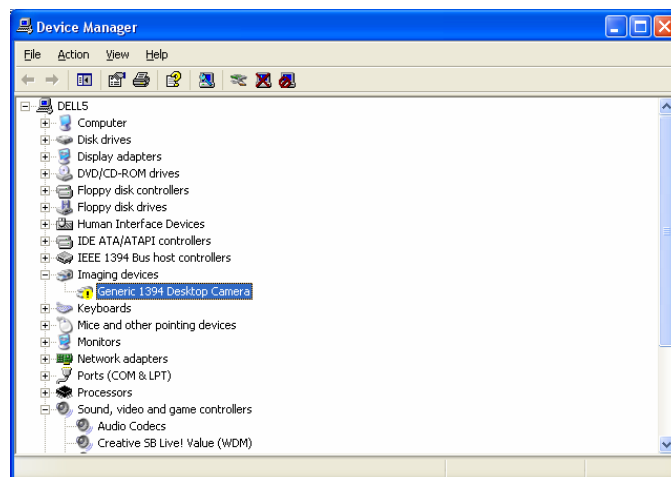
## 2.3. WindowsXP Installation

Directions for installing the driver by WindowsXP.

- ① Make sure the IEEE-1394 cable is not connected between the camera and the PC.
- ② Insert the supplied CD, open the folder named “Driver” and Right Click on the file “dh\_fwdev.inf”.
- ③ Click on the Install tab from the pull down menu.

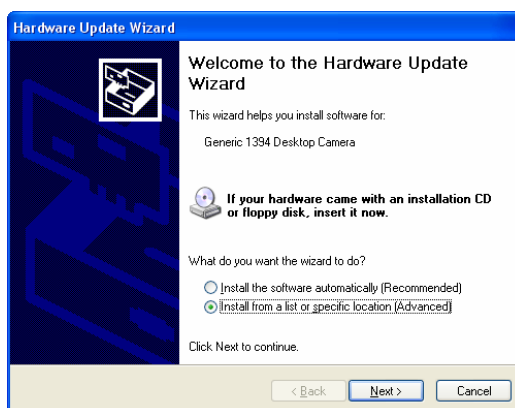


- ④ Connect the IEEE-1394 cable between the camera and the PC. The system will load the normal OS driver and recognize the camera as “Imaging Devices”.
- ⑤ The normal OS driver for “Imaging Devices” needs to be changed to allow proper operation of the camera. Follow the steps below to install the correct IEEE-1394 driver.
- ⑥ Click the Start tab. Click on the Control Panel Tab from the popup menu, and then click on the System Icon.
- ⑦ Click the “Hardware” tab on ”System Properties” and click the “Device Manager” button. It will show “Device Manager” window.
- ⑧ Choose “Generic1394 Desktop Camera” in “Imaging devices” like the chart below.

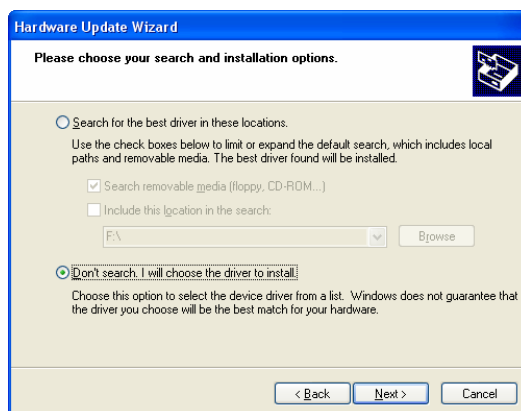


- ⑨ Right Click on the “Generic1394 Desktop Camera”, and choose “Update”. It will show “Hardware Update Wizard”

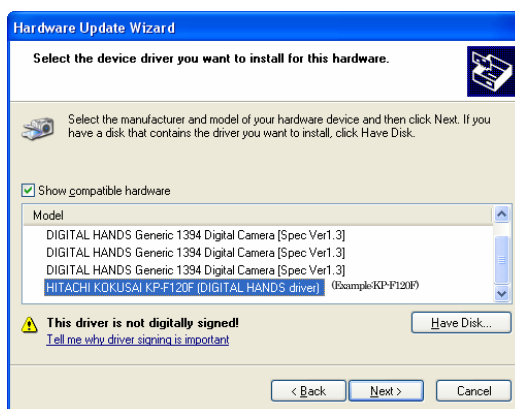
- ⑩ Next click “Hardware Update Wizard”, choose “Install from a list or Specific Location” and then click the “Next” Button.



- ⑪ The Screen will show “Please choose your search and installation options.” in the box, so choose “Don't search. I will choose the driver to install.” and then click “Next” button.



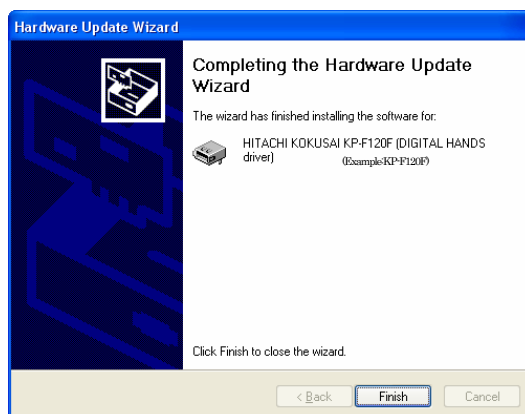
- ⑫ Choose “HITACHI KOKUSAI \*\*\*” (choice 4) on the list of “Models” and then click “Next”.



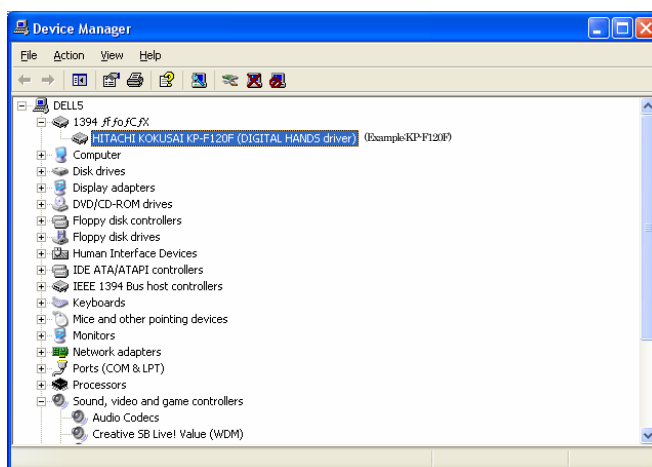
(Example:KP-F120F)



- ⑬ After a while, it shows the screen below, Completing the Hardware Update Wizard. Click the “Finish” button to complete the installation of the Hitachi Kokusai Driver.

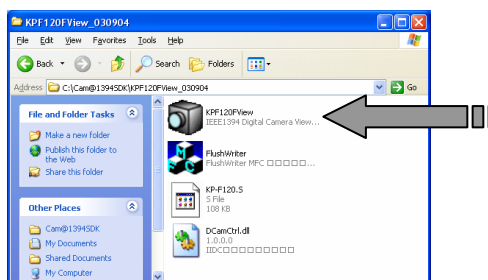


- ⑭ After installation, to check that the driver is recognized and operating normally proceed to the following steps.
- ⑮ Click the Start tap, and then click on the Control Panel Tab on the popup menu. Click on the “System” icon and select “System Properties”.
- ⑯ Click “Hardware” tab on ”System Properties” and click “Device Manager” button. It will show “Device Manager” window.
- ⑰ Click on “IEEE 1394 Bus Host Controllers. If “HITACHI KOKUSAI \*\*\*” is displayed the installation has been done correctly.

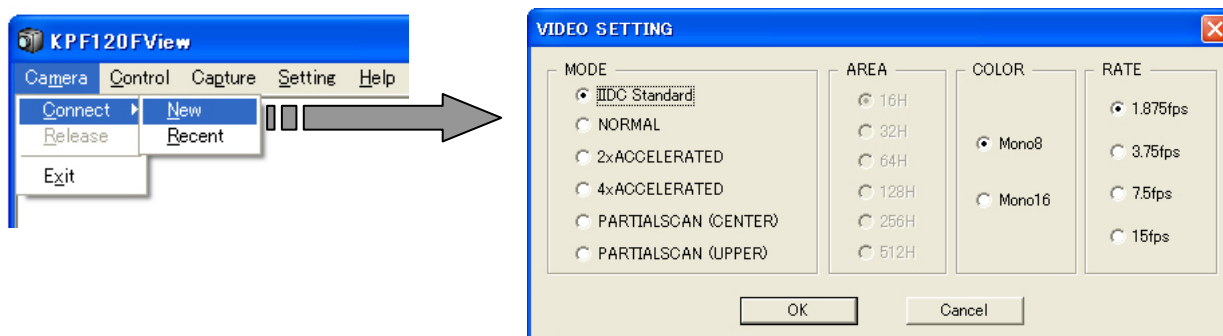


### 3. The Use of Viewer Software (Example: KP-F120F)

#### 3.1. Starting the Program



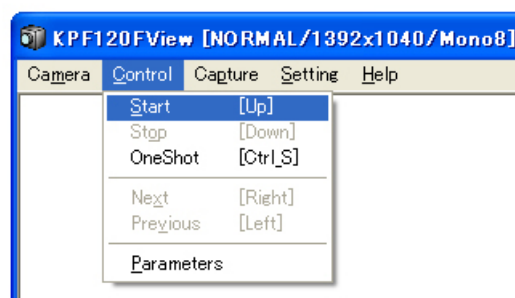
Start this software (KPF120FView.exe) and check “Connect”, “New” on the pull down list, so it shows the chosen dialogue “VIDEO SETTING” choose the video mode, area, Mono8/16 and frame rate and then click “OK” button. If it doesn’t connect the camera, it will show a message of a warning.



These are the directions for the function of the each setting item of the video setting.

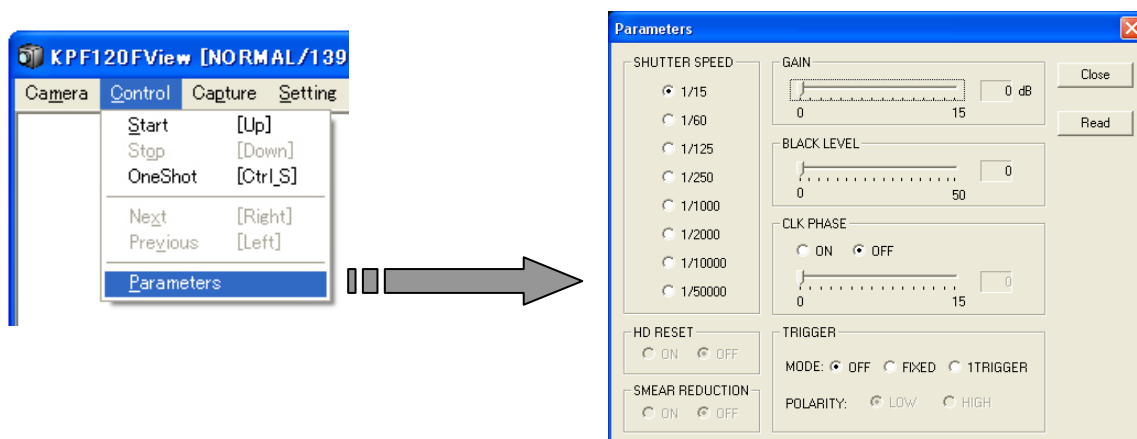
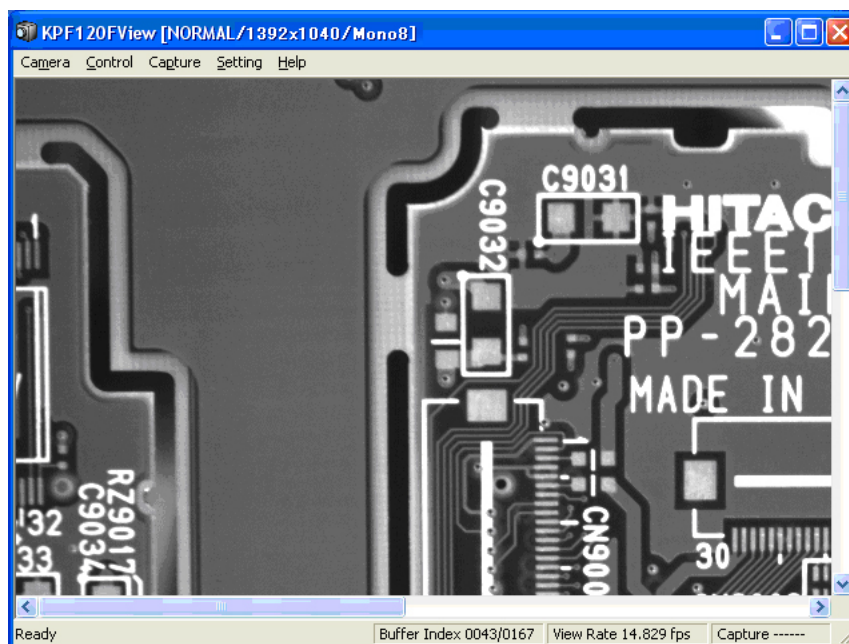
- ① “MODE” Choose the forward mode of the image.  
 IIDC Standard----- Forward to normal (1280×960)  
 NORMAL----- Forward to normal (1392×1040)  
 2×ACCELERATED----- Forward to the length of a width 1/2 image (1392×512) by accelerated×2 (30fps)  
 4×ACCELERATED----- Forward to the length of a width 1/4 image (1392×256) by accelerated×4 (60fps)  
 PARTIALSCAN (CENTER)--- Forward to the part (center) of the image (1392×AREA)  
 PARTIALSCAN (UPPER)----- Forward to the part (upper) of the image (1392×AREA)
- ② “AREA” : Choose the length of a width readings on PARTIALSCAN mode. (16/32/64/128/256/512)
- ③ “COLOR” : Choose a bits par pixel.
  - MONO8-----Forward to 8bits/pic
  - MONO16-----Forward to 10bits/pic
- ④ “RATE” : Choose the frame rate of the image. (1.875/3.75/7.5/15fps)

After it is doing well to confirm the connection of the camera, it will show the set video mode on the previous “VIDEO SETTING” that is “NORMAL/1394x1040/MONO8”. Next, you click “Start” button on the pull down list, it will start the image preview automatically.



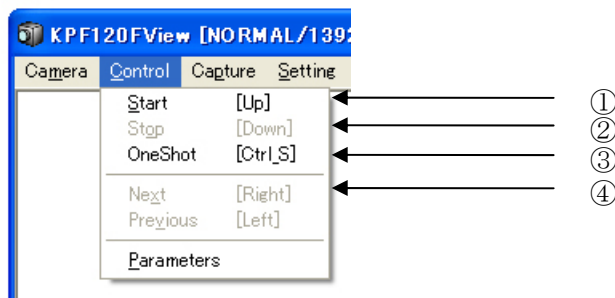
### 3.2. The Camera Parameter Control

During the preview of the image, it control shutter speed, gain, black level and trigger mode and the like from side of camera. By the time, you click “Parameter” on the pull down list of “Control”; it shows chosen dialogue that is Parameter. It control for the camera parameter by this dialogue. Also you click “Read” button, it will be able to get the current camera setting.



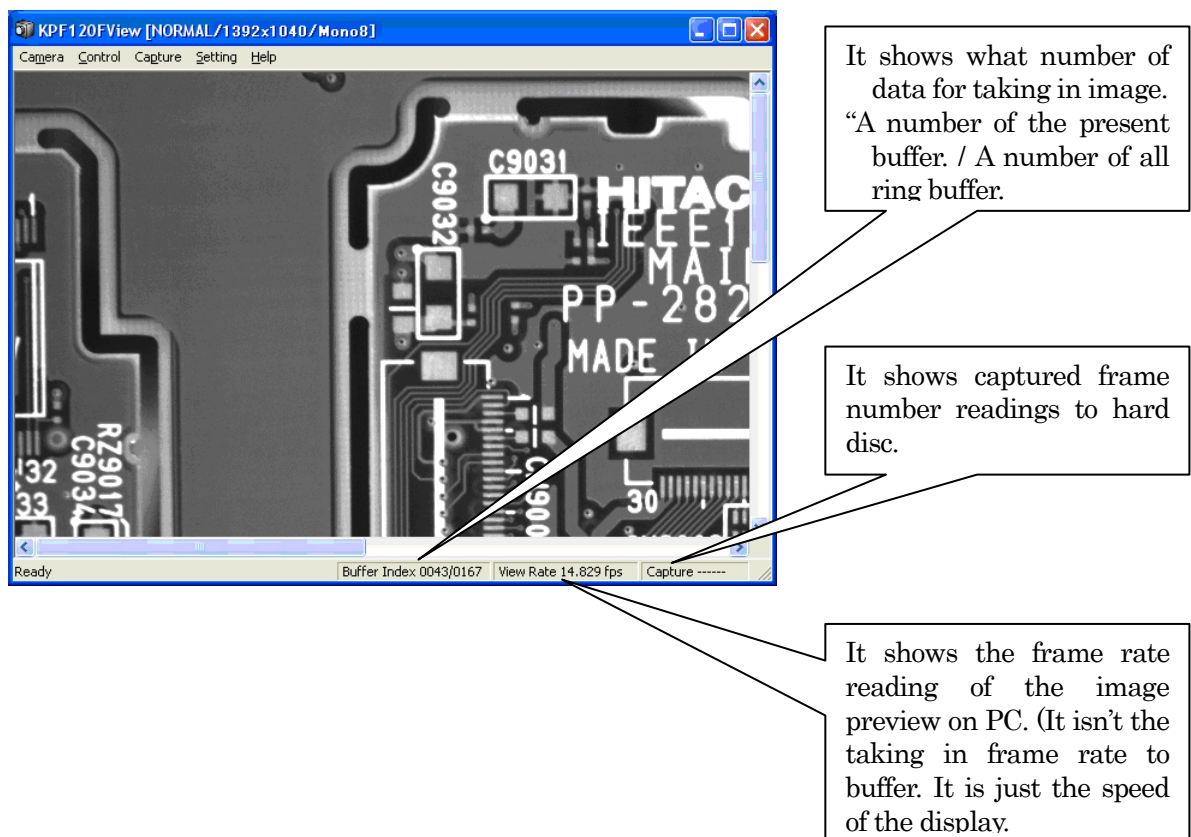
### 3.3. The Image Control

These are the directions for the function of “Control” menu about the image control.



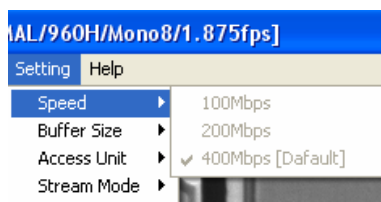
- ① “Start” : Start the note to ring buffer for taking in the image. And then start (restart) the image preview.
- ② “Stop” : Stop the note to ring buffer and then stop the image preview.
- ③ “Next” : It shows the next frame from ring buffer that is for taking in recorded image. You can also control the right arrows on the keyboard.
- ④ “Previous” : It shows the previous frame from ring buffer that is for taking in recorded image. You can also control the right arrows on the keyboard.

These are the directions for the part of the status for the image preview.



### 3.4. The Setting Forward of IEEE1394

These are the directions for the function of the forward IEEE1394 setting menu. (\*Default)



- ① “Speed” : Choose the forward speed mode of IEEE1394 in 100M/200M/400bps\*.
- ② “Buffer Size” : Set the ring buffer size for the taking in image how percent it uses for physical memory. (10/20/30/40/50\*/60/70/80/90%)
- ③ “Access Unit” : Set the number of the data access byte at the forward to asynchronous. (4\*/8/16/32/64/128byte)
- ④ “Stream Mode” : Set the data stream at the forward to asynchronous. If it cannot forward to the image preview well, change to Packet Mode. (Stream Mode\*, Packet Mode)