

GDP-04 firmware consists of 3 parts:

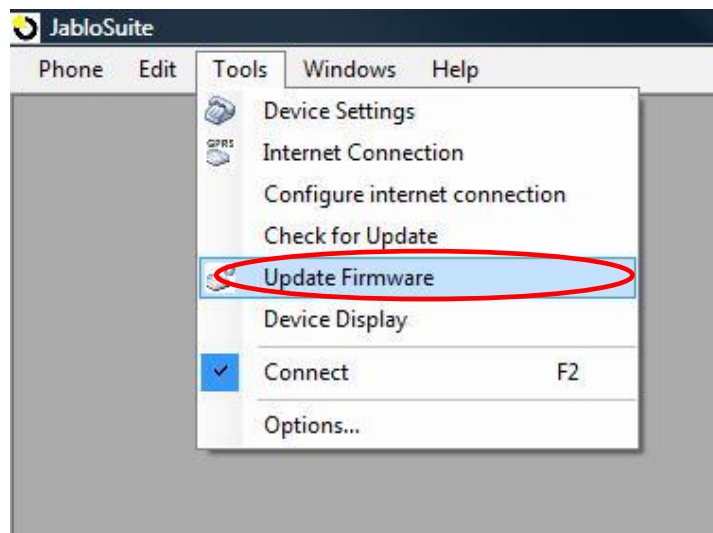
- 1) Bootloader – enables SW updates
- 2) Main SW – performs GSM communication and user interface, contains basic set of languages
- 3) Languages – additional languages

Proceed following steps to update your GDP-04 phone firmware.

1. Run JabloSuite on your PC from the menu *Start* ⇒ *Programs* ⇒ *JabloCom* ⇒ *JabloSuite* ⇒ *JabloSuite* or open it from the desktop icon.
2. Synchronization dialog may appear depending on your JabloSuite settings. Click **Yes** or **No** to continue.
3. "Check for updates" window may appear depending on your JabloSuite settings - click **Yes** for starting the UpdateTool.



4. You can also start UpdateTool from the *Menu* ⇒ *Tools* ⇒ *UpdateTool*

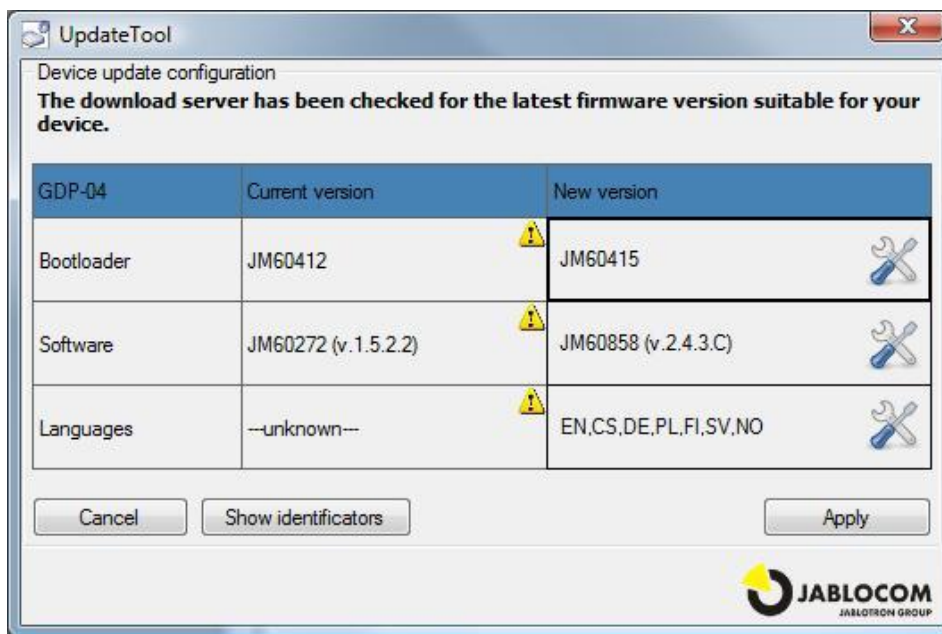


5. Check whether your phone is **powered from the power adaptor**. Firmware update cannot be performed if the phone is powered from the internal battery only!

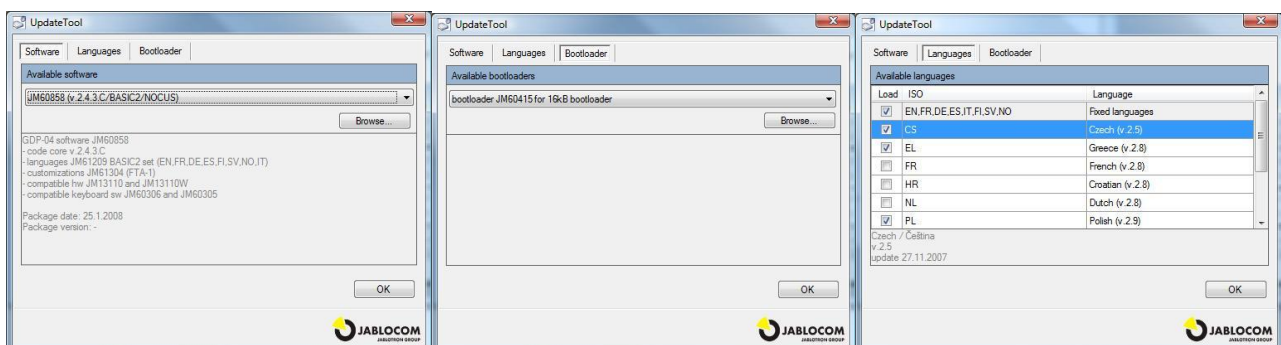
6. Connect your GDP-04 if it has not been connected yet and press the **Next >>** button



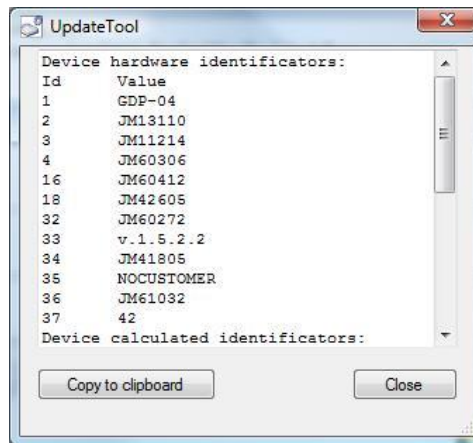
7. Wait until UpdateTool connects your device and JabloCOM update server. It may take some time.
8. An overview of current SW versions appears on the screen. You can choose the new ones by clicking on the "New version" buttons.



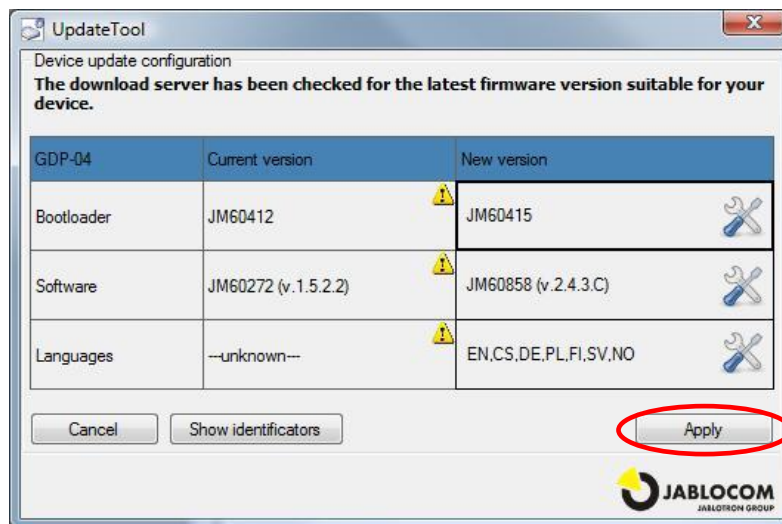
9. SW versions appropriate for updating of your phone are downloaded from the JabloCom update service if you are connected to the internet. You can find and select required GDP-04 software from your hard drive, flash drive or other source by **Browse...** button, too.



10. If the message "Unable to connect to upload server" appears, please check the network settings with your IT administrator. **JabloCOM update service uses http protocol on the port 80. Your firewall must allow access to this port for JabloCOM's programs** - UpdateTool or JabloSuite.
11. If you need to see the full identification, press **Show identification** button. Following screen appears. You can copy it into the clipboard and send it to the technical support if necessary.



12. Press **Apply** button to load the new firmware into your phone.



13. UpdateTool will confirm successful update of your device - press **Finish**.

