



K o s t a r[®]
Feminine Lingerie

Winter boudoir 2011



Emanuelle



4

5

Jacqueline

Jacqueline





Colette



Sophie

10

11

Estelle



12

Florence



13

Florence



14



15

16



Gabrielle

17



Désirée



Désirée



20

21

Louise

Louise





24

Michèle



25

26



Michèle

27



28

Michèle

29

Véronique

Amée

30



31



Marine

Brigitte



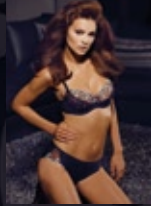
32

Brigitte



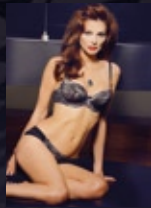
33

Gabrielle



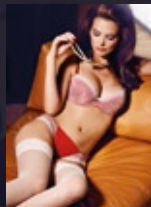
Biustonosz/bra 124 soft:
70 CDE, 75 BCDE, 80 BCD, 85BC
Stringi/string 554: M, L, XL
Figi/brief 555: M, L, XL
Kolor/colour: czarny/black

Emanuelle



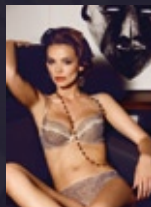
Biustonosz/bra 125 usztywniany /padded:
65 DEFG, 70 CDEFGH, 75CDEFGH,
80 BCDEFGH, 85 BCDEFG, 90 BCDEF
Gorset/corset 902:
70 BCDE, 75 ABCDE, 80 BCDE, 85 BCD
Stringi/string 556:
S, M, L, XL, 2XL, 3XL
Figi/brief 557:
S, M, L, XL, 2XL, 3XL, 4XL
Kolor/colour: czarny + beż/black
+ beige

Jacqueline



Biustonosz/bra 126 push up:
70 BCDE, 75 ABCDE, 80 BCD, 85 BC
Biustonosz/bra 127 soft:
65 DEFGH, 70 BCDEFG, 75 BCDEF,
80 BCDE, 85 BCD, 90 BC
Stringi/string 558:
S, M, L, XL, 2XL, 3XL
Figi/brief 559: S, M, L, XL, 2XL, 3XL
Kolor/colour: bordowy + ecru
/deep red + ecru

Colette



Biustonosz/bra 128 push up:
70 BCDE, 75 ABCDE, 80 BCDE, 85 BCD
Koszulka/camisole 812:
S, M, L, XL, 2XL
Stringi/string 560: S, M, L, XL, 2XL
Figi/brief 561: S, M, L, XL, 2XL, 3XL
Kolor/colour: panterka/mini leopard

Véronique



Biustonosz/bra 129 soft: 65 DEFGH,
70 BCDEFGH, 75 BCDEFGH,
80 BCDEFGH, 85 BCDEFG, 90 BCDEF,
95 CDE
Stringi/string 562:
S, M, L, XL, 2XL, 3XL
Figi/brief 563:
S, M, L, XL, 2XL, 3XL, 4XL
Kolor/colour: turkus/turquoise

Sophie



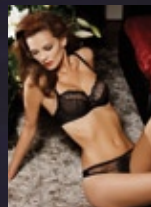
Biustonosz/bra 130 push up:
70 CDE, 75 BCDE, 80 CDE, 85 BCD
Biustonosz/bra 134 soft:
75 DEFGH, 80 CDEFGH, 85 CDEFG,
90 CDEF, 95 CDE
Stringi/string 564: S, M, L, XL, 2XL
Figi/brief 565: S, M, L, XL, 2XL, 3XL
Kolor/colour: czarny + róż/black
+ pink

Désirée



Biustonosz/bra 135 push up:
70 BCDE, 75 ABCDE, 80 BCDE, 85 BCD
Gorset/corset 903: 70 BCDE
75 ABCDE, 80 BCDE, 85 BCD
Stringi/string 566: S, M, L, XL
Figi/brief 572: S, M, L, XL
Kolor/colour: malinowy
+ czarny/raspberry + black

Estelle



Biustonosz/bra 131 soft:
65 DEFGH, 70 BCDEFGH, 75 BCDEFG,
80 BCDEF, 85 BCDE, 90 BCD, 95 C
Stringi/string 567 stringi:
S, M, L, XL, 2XL, 3XL
Figi/brief 568:
S, M, L, XL, 2XL, 3XL, 4XL
Kolor/colour: czarny/black

Florence



Biustonosz/bra 136 soft:
65 DEFGH, 70 BCDEFGH, 75 BCDEFG,
80 BCDEF, 85 BCDE, 90 BCD, 95 C
Stringi/string 567 stringi:
S, M, L, XL, 2XL, 3XL
Figi/brief 568:
S, M, L, XL, 2XL, 3XL, 4XL
Kolor/colour: czarny, czarny + ama-
rant/black, back + amaranth

Louise



Biustonosz/bra 085 push up:
70 ABCDE, 75 ABCDE, 80 ABCDE,
85 BCD
Biustonosz/bra 086 semi soft:
60 DEF, 65 CDEFGH, 70 BCDEFGH,
75 BCDEFGH, 80 BCDEFGH, 85
BCDEFG, 90 BCDEF, 95 CDE
Gorset/corset 904:
70 BCDE, 75 ABCDE, 80 ABCDE,
85 BCD
Stringi/string 573:
S, M, L, XL
Stringi/string 503 :
S, M, L, XL, 2XL, 3XL
Figi/brief 502:
S, M, L, XL, 2XL, 3XL, 4XL
Kolor/colour: czarny + złoty
/Black + gold

Michèle



Biustonosz/bra 091 push up:
70 ABCDE, 75 ABCDE, 80 ABCD,
85 ABC
Biustonosz/bra 092 soft:
60 EFGH, 65 CDEFG, 70 BCDEF,
75 BCDE, 80 BCD, 85 BC
**Biustonosz/bra 137 płytka,
usztywniany / shelf bra:** 70 ABCDE,
75 ABCDE, 80 ABCD, 85 BC
Gorset/corset 901: 70 ABCDE,
75 ABCDE, 80 ABCD, 85 BC

Stringi/string 574 (do 137):
S, M, L, XL

Stringi/string 509:
S, M, L, XL, 2XL, 3XL

Figi/brief 508:
S, M, L, XL, 2XL, 3XL, 4XL

Kolor/colour: czarny + złoty lurex i
kamienie Swarovskiego/black + gold
lurex & Swarovski stones

Marine



Biustonosz/bra 132 soft:
65 DEFGH, 70 BCDEFGH,
75 BCDEFGH, 80 BCDEFGH,
85 BCDEFG, 90 BCDEF, 95 CDE
Stringi/string 569:
S, M, L, XL, 2XL, 3XL
Kolor/colour: granatowo-biały/
navy-white

Aimée



Biustonosz/bra 133 push up:
70 ABCDE, 75 ABCDE, 80 ABCDE,
85 BCD
Stringi/string 570:
S, M, L, XL, 2XL
Figi/brief 571:
S, M, L, XL, 2XL, 3XL
Kolor/colour: jasnoszara kratka
/bright grey plaid

Brigitte



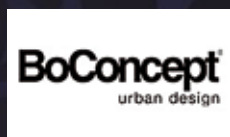
Biustonosz/bra 138 push up:
65 DEFG, 70 BCDE, 75 ABCDEF,
80 ABCDE, 85 BCD
Biustonosz/bra 139 soft:
65 DEFGH, 70 BCDEFGH,
75 BCDEFGH, 80 BCDEFGH,
85 BCDEFG, 90 BCDEF, 95 CDE
Stringi/string 575:
S, M, L, XL, 2XL, 3XL
Figi/brief 576:
S, M, L, XL, 2XL, 3XL, 4XL
Kolor/colour: pepitka/houndstooth



KOSTAR

Ewa Barszczewska
15-691 Białystok,
ul. gen. Fr. Kleeberga 8,
tel. +48 85 653 01 58,
+48 85 662 00 60,
fax +48 85 653 10 91,
kostar@kostar.com.pl;
dział handlowy/sales
department:
tel. +48 85 653 64 22,
biuro@kostar.com.pl
www.sklepko.kostar.pl

Specjalne podziękowania
dla sklepu BoConcept Warszawa
za pomoc w realizacji sesji.



projekt www.jamiolkowski.com



UNIA EUROPEJSKA
EUROPEJSKI FUNDUSZ
ROZWOJU REGIONALNEGO

