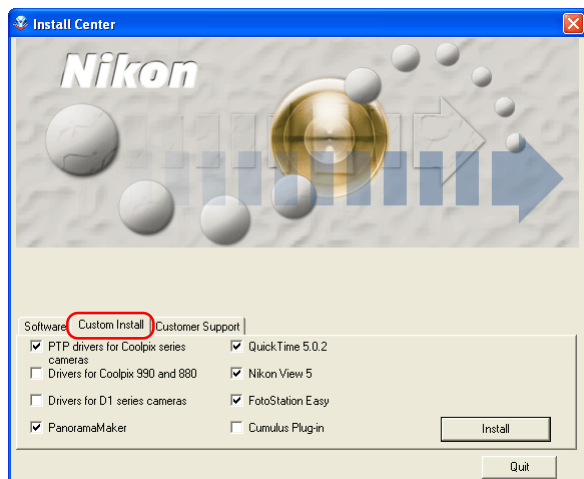


Custom Install

Step 1 : Select the software to be installed

Select the programs you want to install from the list in the **Custom Install** tab.

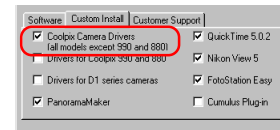


Before installation

- Before installing Nikon View 5 and the device driver, make sure the camera is disconnected from the computer. If the Device Wizard launches when you connect a camera, click **Cancel** to exit the Wizard.
- You have turned off any virus-checking software that may be running.
- You have exited all other applications.

Coolpix Camera Drivers (all models except 990 and 880)

Select this check box to install the drivers for COOLPIX series cameras (excluding 990/880). This check box only appears if you are using Windows 98 Second Edition.



PTP Drivers for Coolpix series cameras

Select this check box to install PTP drivers. This check box is only displayed if you are using Windows XP.

Drivers for Coolpix 990 and 880

Select this check box to install the drivers for the COOLPIX990/880.

Drivers for D1 series cameras

Select this check box to install the drivers for the D1/D1x/D1H cameras.

PanoramaMaker

Select this check box to install PanoramaMaker; an application which allows you to combine separate images into a panorama. The installation of this application is particularly recommended if you are using a camera with a Panorama Assist mode.

QuickTime 5.0.2

Select this check box to install Apple Computer's QuickTime 5.0.2.

Nikon View 5

Select this check box to install Nikon View 5.

FotoStation Easy

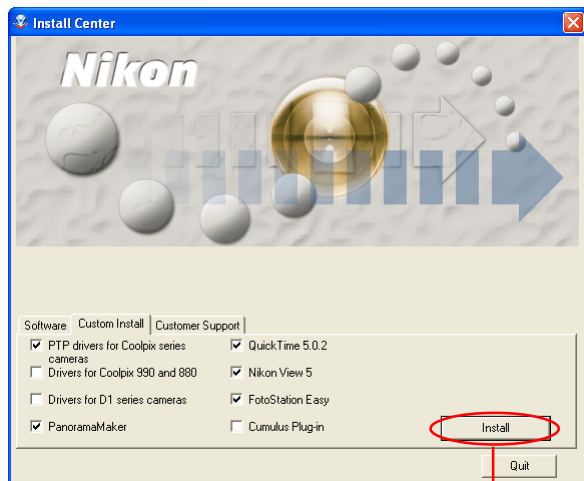
Select this check box to install FotoStation Easy.

Cumulus Plug-in

Select this check box to install Nikon Cumulus Plug-in. You will only need this plug-in if you wish to use Canto Cumulus as your image database software.

Step 2 : Install the selected software

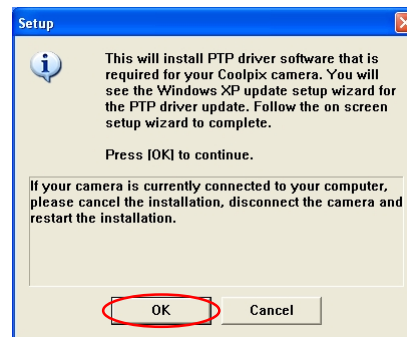
After selecting the programs you want to install, click **Install**. If you have chosen more than one program, the programs are installed in the order of display.



Install button

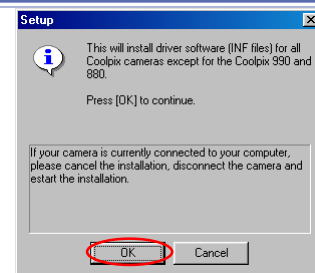
2.1 — Install PTP Driver (Windows XP only)

If you are using Windows XP and selected the **PTP Driver**, the installation of the driver will start. The **Setup** dialog box below is displayed, asking you to confirm that a camera is not connected to your computer. Make sure a camera is not connected, and click **OK** to begin installation.



Windows 98SE

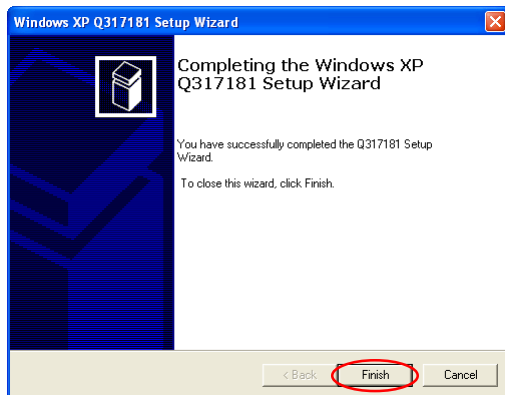
If you are using Windows 98SE, drivers for all Coolpix cameras (all models except 990 and 880) will be installed if selected. The dialog box shown right will be displayed. Click **OK** to continue.



After the PTP drivers have been installed, the Set up wizard may start automatically.

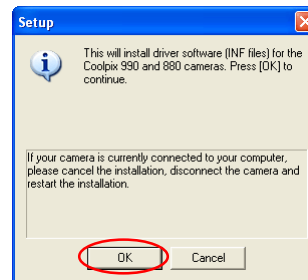


If the wizard starts, follow the instructions on the screen. When the final screen appears, click **Finish** to complete the wizard. Do not restart your computer even if instructed to do so.

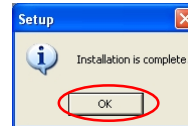


2.2 — Install Other drivers

If you selected **Drivers for Coolpix 990 and 880**, or **Drivers for D1 series cameras**, the installation of the device driver starts. The Setup dialog box below is displayed, asking you to confirm that a camera is not connected to your computer. Make sure a camera is not connected, and click **OK** to begin installation.

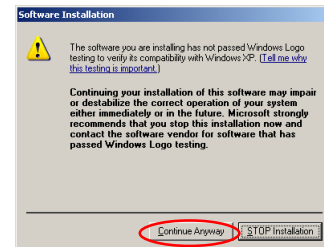


A dialog box appears, indicating that installation is complete. Click **OK**.



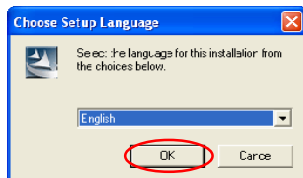
Drivers for Coolpix 990 and 880

If you install the Drivers for Coolpix 990 and 880, a dialog box similar to the one shown right may be displayed. Click **Continue Anyway** or **Yes** to continue installation.

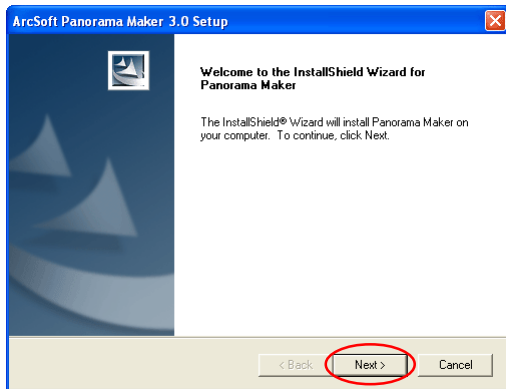


2.3 — PanoramaMaker

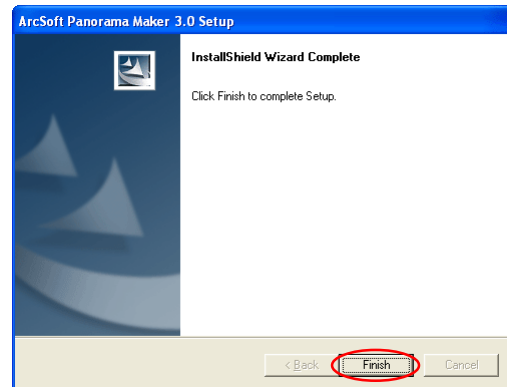
The dialog box below, asking you to select a language for installation, may appear. Select the desired language and click **OK**.



The dialog below is displayed, showing that you are now installing PanoramaMaker. Follow the on screen instructions to continue the installation.



When the dialog box shown below appears, click **Finish** to complete the installation.



About PanoramaMaker

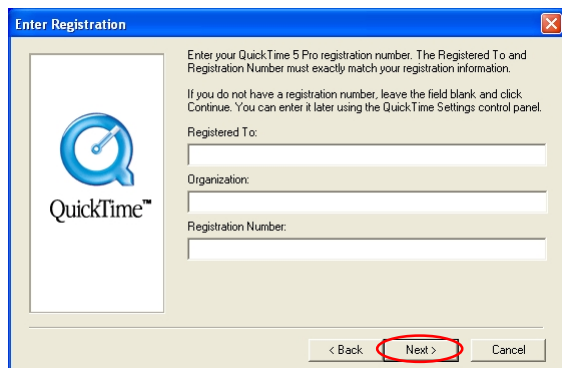
PanoramaMaker allows you to combine separate images into a Panorama. This software is particularly useful if your COOLPIX camera has a Panorama Assist mode.



2.4 — Installing QuickTime 5.0.2

The **Enter Registration** dialog box (see below) appears, showing that you are now installing the selected software. Note that you do not enter registration information.

Click **Next** to continue. Follow the remaining on-screen instructions to complete installation.



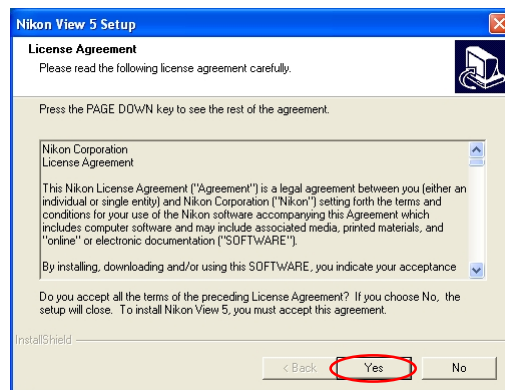
2.5 — Installing Nikon View 5

The license agreement appears, showing that you are now installing the selected software.

I — Accept the license agreement

When you start installation of Nikon View 5, the license agreement is displayed.

Read the agreement carefully, and click **Yes** if you wish to continue installation.



Existing versions of Nikon View

If an older version of Nikon View is installed on your computer, it must be uninstalled before installing Nikon View 5.

Nikon View 5 does not support connection of COOLPIX950, 910, 900, 800, or 700 digital cameras.

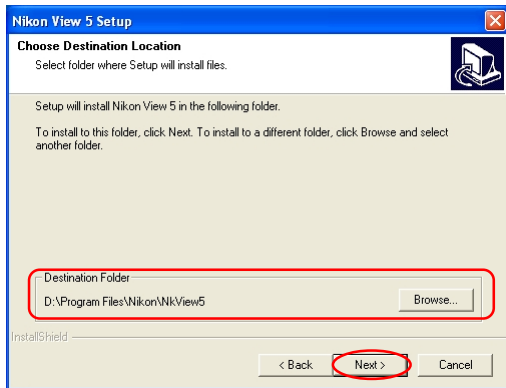
Nikon View 5 can however be used to view photographs taken with these cameras if the camera memory card is inserted into a digital camera that Nikon View 5 supports.



2 — Choose a location for Nikon View 5

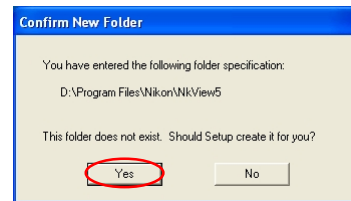
The folder to which Nikon View 5 will be installed is shown in the **Destination Folder** area. To install to this folder, click **Next**.

To select a new folder, click **Browse** and navigate to the desired location.



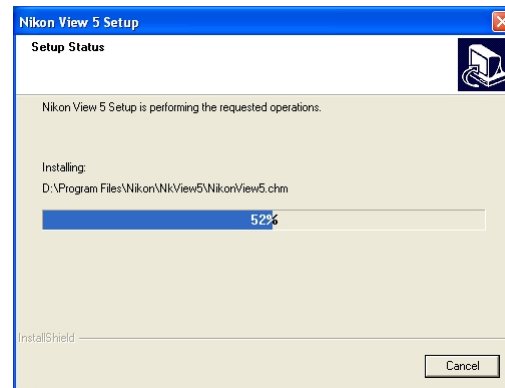
3 — Confirm New Folder

If the folder destination folder specified in the previous step has not yet been created, you will be asked whether you want to create the folder. Click **Yes** to create the folder automatically and proceed to the next step.



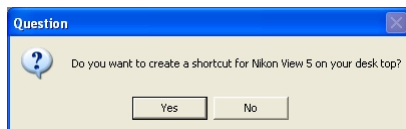
4 — Start installation

While installation is in progress, the dialog shown below will be displayed.



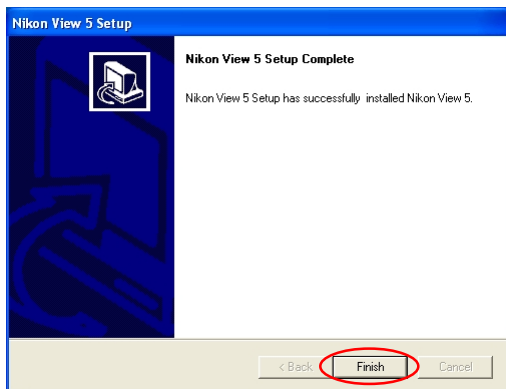
5 — Create a shortcut icon

When the progress indicator reaches 100%, the dialog shown below appears. Click **Yes** to create a shortcut, allowing you to start Nikon View 5 directly from an icon on the desktop. If you do not want to create a shortcut, click **No**.



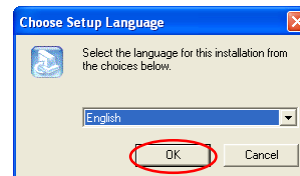
6 — Complete the installation

A dialog box appears indicating that installation of Nikon View 5 is complete. Click **Finish**.

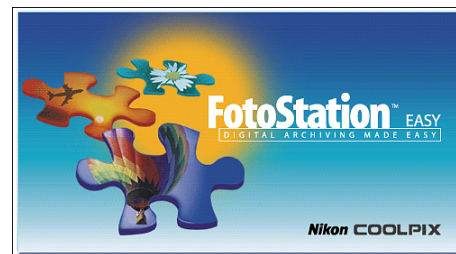


2.6 — FotoStation Easy

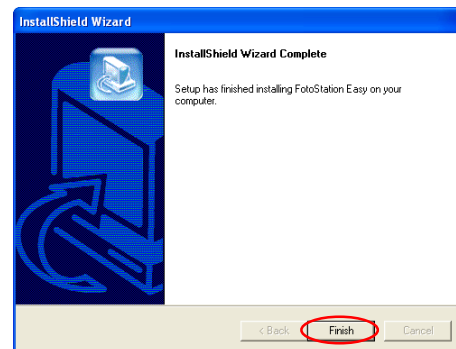
The dialog box below, asking you to select a language for installation, appears. Select the desired language and click **OK**.



The FotoStation splashscreen shown below appears, followed by a dialog box asking you to select the installation destination. Follow the on-screen instructions to continue the installation.



When the dialog box shown below appears, click **Finish** to complete the installation.

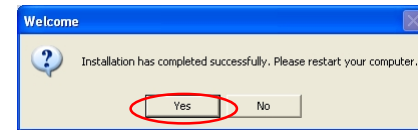


2.7 — Install the Nikon Cumulus Plug-in

The installation of Nikon Cumulus Plug-in begins. Follow the on-screen instructions to complete installation. For information on Cumulus settings, refer to the About Cumulus appendix. If you did not select **Cumulus Plug-in**, proceed to the next step.

2.8 — Restart your computer

You have now installed all the programs selected in the **Custom Install** tab. The dialog box shown below appears. Select **Yes** to restart your computer.



The custom install procedure is now complete.



The Nikon Cumulus Plug-in

This plug-in allows Cumulus 5.0 to handle image information from Nikon digital cameras. Install Nikon Cumulus Plug-in if you are using Canto's Cumulus 5 as your image database program.

