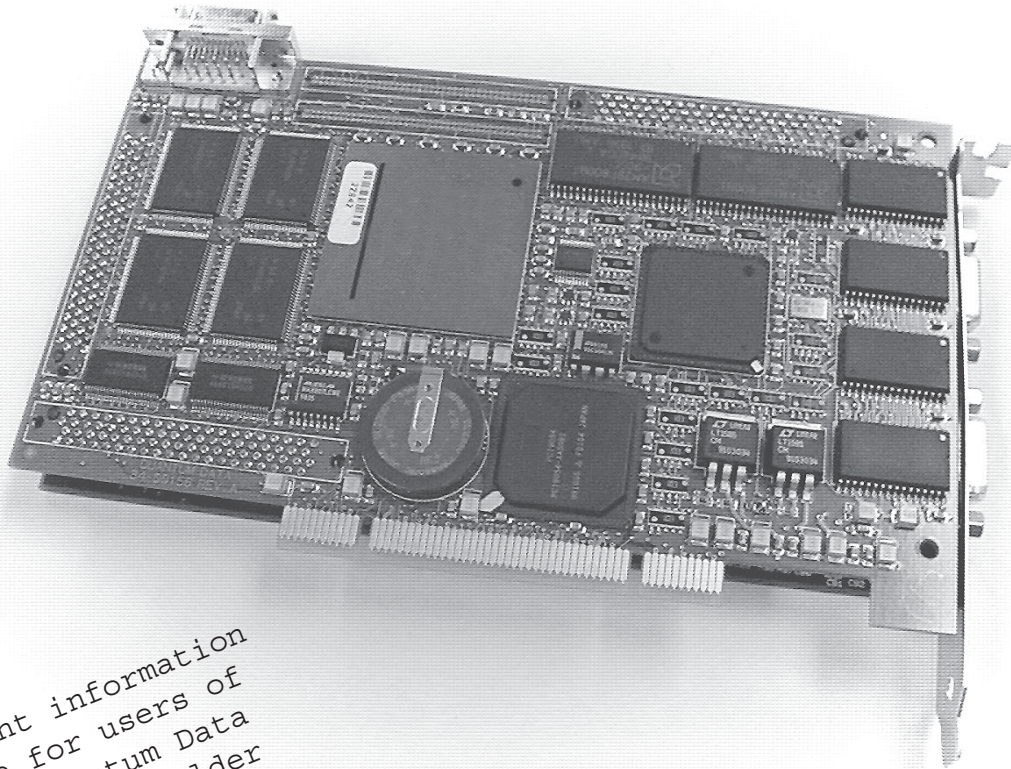


MODEL 802F-PCI, 802G-PCI

Programmable Video Generators



Important information
inside for users of
older Quantum Data
PCI cards or older
VGM software.

Quick Start Guide



QUANTUMDATA

This Quick Start Guide is designed to help you get up and running quickly with your video generator and Video Generator manager (VGM) software. Detailed information on programming and operating the generator can be found in the VGM help file.

Important information for users of older Quantum Data cards

As of May 29, 2001 all Model 802F-PCI and 802G-PCI cards are being shipped with firmware having significant improvements in how data is communicated over the PCI bus. The new firmware versions are:

Model 802F-PCI Firmware Ver. 7.07600075 and Model 802G-PCI Firmware Ver. 7.07500075

The new firmware requires the use of a new version of Quantum Data's VGM software (Version 3.0 Beta 4.5b or higher) as well as a new DLL (Version 3.530 or higher) if you are developing your own MS-Windows applications. Please see the back page of this guide if you are developing DOS based applications.

Because of these changes, it is not possible to operate a mix of Quantum Data PCI Card Generators with old and new firmware on the same PCI bus. Revision D of the Quantum Data "Software Utilities and Documentation" CD-ROM (Quantum Data Part # 68-00192) contains an updated installer of the Quantum Data VGM 3.0 application as well as firmware files for updating 802F-PCI and 802G-PCI cards having older firmware.

Please refer to the "CHANGING_DLL_VERSIONS.TXT" file that is created as part of the VGM application's installation procedure or the "1_READ_ME_FIRST_VGM3_0_B4_5b.txt" file in the Applications sub-directory on the CD-ROM. These files contain information on how make the new version of VGM work with PCI cards having older firmware so that they can be updated to the new firmware.

Operation of other Model 801, 802 and 822 series generators is not affected by the changes in DLL or VGM 3.0 software. Either version of the DLL and VGM application should work with all recent firmware versions used in the ISA card and stand alone video generators.

Hardware Installation

Before you install the Quantum Data PCI Generator card

- 1. Make sure your computer and monitor are turned off.**
This protects the card from possible electrical damage when you connect your system components later.
Important — For now, leave the line cord for the computer plugged in.
- 2. Remove the cover from the computer.**
See the manual that came with your computer for specific instructions.
- 3. Touch the metal part of the power supply case inside the computer to discharge any static electricity that you might have.**
See the manual that came with your computer to locate its power supply.
- 4. Unplug the computer's line cord.**
- 5. Locate an open PCI slot on your computer.**
See the manual that came with your computer.
- 6. Remove the backplate for this slot.**
- 7. Remove the Generator card from its static-proof bag.**
Hold the card by its edges to avoid touching the connector on the card.
- 8. Align the card with the slot.**
- 9. Insert the card into the slot and press the card firmly until the connector is in place.**
 - Handle the card only by its edges.
 - Don't bend or wiggle the card.
 - Don't force the card into the slot. If there's a lot of resistance, pull it out and try again.
- 10. Use the screw to secure the backplate attached to the card.**
- 11. Replace the cover on the computer.**
- 12. Plug in your computer.**
- 13. Make sure all the cable connections are secure.**

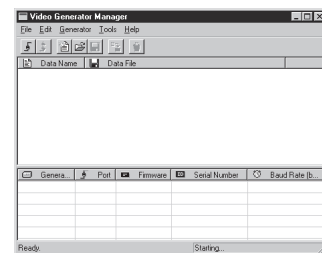
VGM Software Installation

Quantum Data's Video Generator Manager (VGM) software package is the primary user interface to our expansion card based generators. You will need to use version 3.00 or higher in order to use the software with PCI card generators. Earlier versions of VGM do not support the PCI card models. Version 3.00 will work with MS-Windows® 95, 98, 2000 and recent versions of NT. The software installation package is included with the generator on floppy disks and can also be downloaded from the Tech Support area of our web site. You do not need to have the generator installed to install or use some of the features in the software. By default, the installer will not make any changes to previously installed versions of VGM.

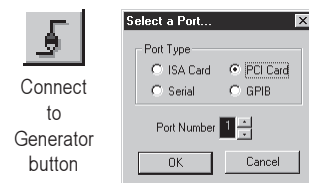
- Start Windows if it is not yet running on your computer. You will need to log on with administration privileges if you are using Windows NT.
- Make sure you have no other open applications on the Windows desktop before starting the installation.
- Insert Disk #1 of the Quantum Data *Video Generator Manager* disk set in the disk drive.
- Locate and run SETUP.EXE on the floppy disk.
- You must agree to the displayed terms of use in order to install the software.
- The installer will give you the option of changing where it will install the software and how it is added to your start menu.
- You will need to restart Windows in order to complete the installation use VGM.

Using VGM with a PCI Card Generator

- Start VGM (3.00 or higher) from the Windows Start menu or by running VGM3.EXE from where it was previously installed. You will get the Main VGM screen as shown in the upper figure.
- Click the *Connect to Generator* button on the tool bar. This will open a separate *Port Selection* dialog box.
- Select PCI for the port type. VGM will scan the PCI ports for generator cards. If more than one PCI generator board is found, you can choose which unit you wish to connect. An error message is shown if a PCI generator board can not be found.
- Click the *OK* button to make your selection and close the dialog box. The generator will now be listed in the lower connections pane of the main VGM screen.
- Double click on the generator listed in the connections pane. This will open a generator screen for that particular unit will list the current contents and status of the generator.
- Please refer to the VGM Help file for additional information.



Main VGM Screen



Connect to Generator button

Port Selection Screen

DOS Library

An updated (ver. 2.10) DOS Library is available from Quantum Data if you are developing your own DOS based software applications to control and program your Quantum Data video test generators. The updated library is compatible with the newer firmware found in the Model 802F-PCI and 802G-PCI cards. The library contains example C source code and header files that can be incorporated into your own source code. All of the source code and an executable file are supplied for a simple terminal emulation program.

The updated DOS library is not compatible with PCI cards having older firmware. Please see the "Important Information..." section of this guide on how to update the firmware in these older units.

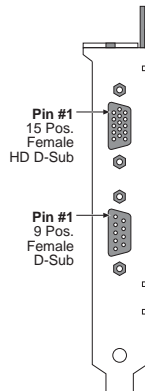
The updated DOS library is scheduled to be added to the next release of the Quantum Data Software and Documentation CD-ROM. Please contact your Quantum Data salesperson or Quantum Data distributor for information on availability of the updated CD-ROM.

The DOS library can be downloaded from our Web site as a zipped file using the following case sensitive URL:

http://www.quantumdata.com/Downloads/PCI_DOS_LIB_2_10.ZIP

Output Connector Details

Unused analog video outputs should be terminated with 75 ohm loads



Pin #	Upper Connector 15 pin HD D-Sub Female (DDC2B)	Lower Connector 9 pin D-Sub Female
1	Analog Red Video	Ground
2	Analog Green Video	No Connection
3	Analog Blue Video	No Connection
4	No Connection	No Connection
5	Ground	No Connection
6	Ground (Red Video)	No Connection
7	Ground (Grn Video)	No Connection
8	Ground (Blu Video)	TTL Composite Sync
9	+5 VDC Out	No Connection
10	Ground (Syncs)	
11	No Connection	
12	DDC Bidirectional Data	
13	TTL Vertical Sync	
14	TTL Horizontal Sync	
15	DDC Data Clock	



Quantum Data, Inc.
2111 Big Timber Rd.
Elgin, IL 60123-1100 USA

Main Tel: (847) 888-0450
Facsimile: (847) 888-2802
Website: www.quantumdata.com

Product Support and Service

Toll free telephone number in USA
1-888-252-6133

From all other countries:
[1] 847-888-0450 then select option 3

E-Mail: support@quantumdata.com

Entire contents Copyright ©2001 by Quantum Data, Inc. All rights reserved.

The information contained in this document is provided for use by our customers and may not be incorporated into other products or publications without the expressed written consent of Quantum Data. Information furnished by Quantum Data is believed to be accurate and reliable. However, no responsibility is assumed by Quantum Data for its use.

Part # 68-00190 Rev. C • Model 802F-PCI, 802G-PCI Quick Start Guide