

# StreamCaster 4400 *Enhanced*

4x4 MIMO radio



...performance **ENHANCED**

**SILVUS**  
TECHNOLOGIES

LEADING THE MIMO REVOLUTION

# STREAMCASTER 4400E



## GENERAL

WAVEFORM	Mobile Networked MIMO (MN-MIMO)
ENCRYPTION	DES56 (Standard) AES256 (Optional) FIPS140-2 Level 2 (Suite B)
DATA RATE	Up to 100Mbps (Adaptive)
MIMO TECHNIQUES	Spatial Multiplexing, Space-Time Coding TX/RX Eigen Beamforming
OUTPUT POWER	1mW - 20W variable (up to 80W effective w/TX Beamforming)
PUSH-TO-TALK VOICE	G.711/G.722/Opus Codec
LATENCY	7ms average (20MHz BW)
SENSITIVITY	-102dBm @ 5MHz BW -108dBm @ 1.25MHz BW (optional)
FREQUENCY BANDS	Bands from 300MHz to 6GHz available
CHANNEL BANDWIDTH (MHZ)	20/10/5 (2.5/1.25 Optional)
ONBOARD STORAGE	64GB
DIAGNOSTICS	Temperature/Voltage Monitoring Statistics Logging
SPECTRUM DOMINANCE	MANET Spectrum Analyzer (MAN-SA) MANET Interference Avoidance (MAN-IA) MANET Interference Cancellation (MAN-IC)

## FREQUENCY BAND OPTIONS

(all bands listed in MHz; dual band configurations available)

BAND	CODE	RANGE	BAND	CODE	RANGE
UHF	034	300-380	S	225	2200-2300
	043	400-450		235	2200-2500
	068	663-698	2.4 GHz ISM	245	2400-2500
900 MHz ISM	091	902-928	C	455	4400-4700
L	137	1350-1390		467	4400-4940
	139	1350-1440		485	4700-5000
	147	1452-1492	Public Safety	512	4940-5300
	150	1492-1525	5 GHz ISM	520	5150-5250
	182	1790-1850		580	5725-5875
Broadcast	206	2025-2110			

Note: If band of interest is not listed, please contact a sales representative

## MECHANICAL

AMBIENT TEMPERATURE	-40° to +65° C
IP RATING	IP68 (Submersible to 20 meters for 30 min)
DIMENSIONS	133.35 x 114.3 x 45.72 mm without connectors
WEIGHT	1134 grams
MATERIAL	Black Anodized Aluminum
MOUNTING	4-Hole Mounting Pattern (Through-Hole)

## POWER

VOLTAGE	9 - 20 VDC
POWER CONSUMPTION	8 W - 100 W @ 20W TX Power 8 W - 43 W @ 8W TX Power 8 W - 24 W @ 1W TX Power

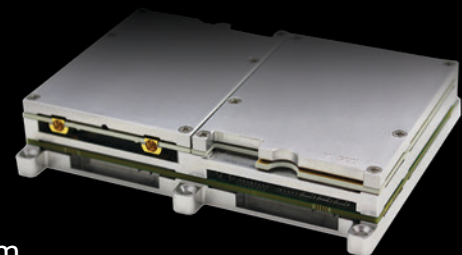
## INTERFACES

RF	4x TNC(f) N(f) Optional
PRIMARY	Ruggedized Push/Pull Connector 1x Ethernet, 1x RS232, DC Input
AUXILIARY	Ruggedized Breakaway Connector 1x USB 2.0 Host, 1x USB 2.0 OTG
PTT (PUSH-TO-TALK)	Ruggedized Breakaway Connector (Front Panel)
STATUS INDICATOR	Tri-Color LED
CONTROL INTERFACE	Multi-Position Switch 13 presets plus zeroize crypto Web-Based StreamScape Network Manager

## MECHANICAL - OEM VERSION

(shown below)

DIMENSIONS	108.97 x 83.82 x 20.83 mm
WEIGHT	258 grams
RF CONNECTORS	SMP (m)



[www.silvustechologies.com](http://www.silvustechologies.com)

The following notice applies to the sale, lease, or offer of this device other than for use by the United States Government or for export: This device has not been authorized as required by the rules of the Federal Communications Commission. This device is not, and may not be, offered for sale or lease, or sold or leased, until authorization is obtained. Please contact Silvus for questions about the FCC approval status or requirements that pertain to this device including whether an FCC approved version is available. Exported devices are subject to the laws of the countries into which they are exported.