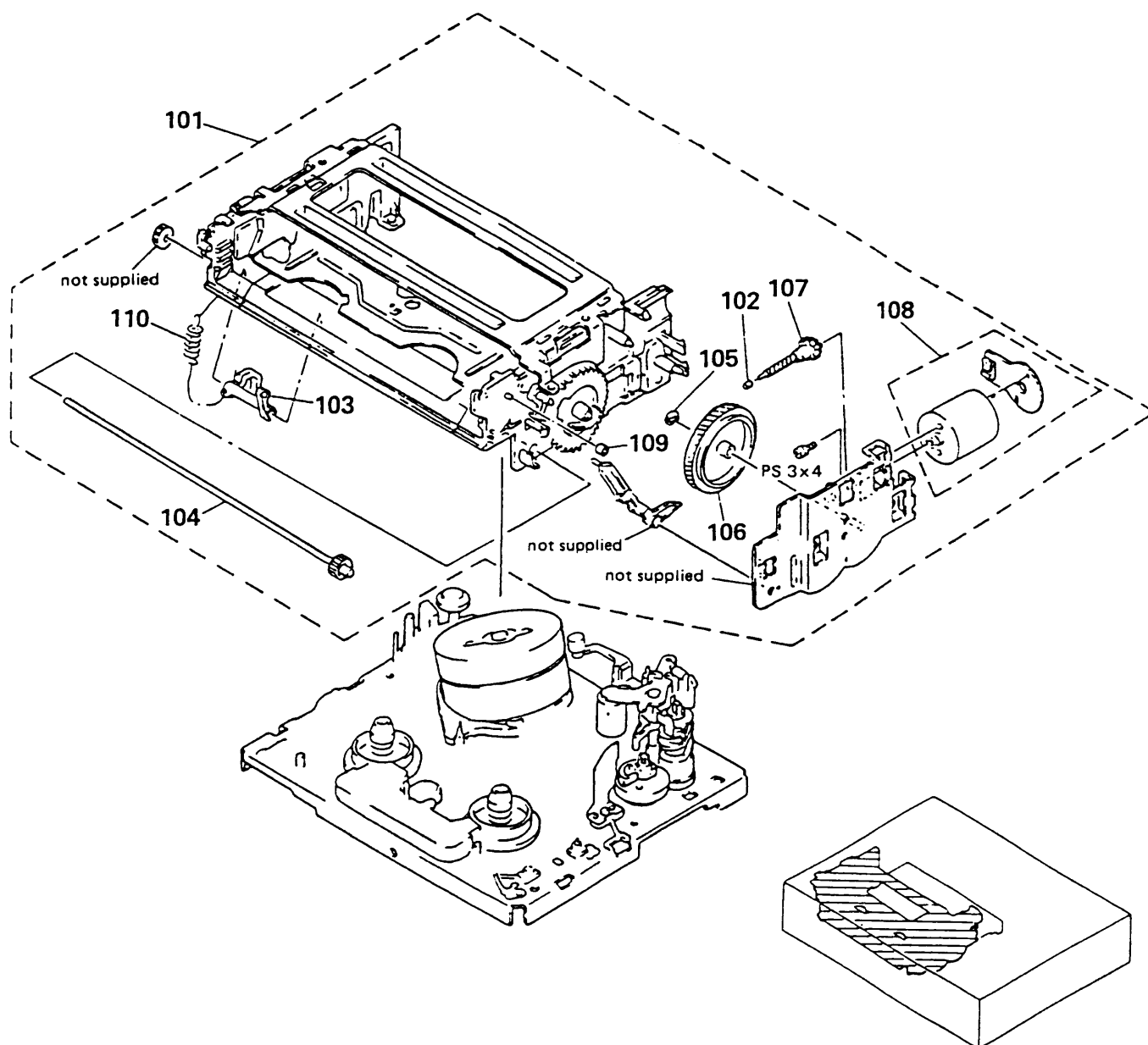
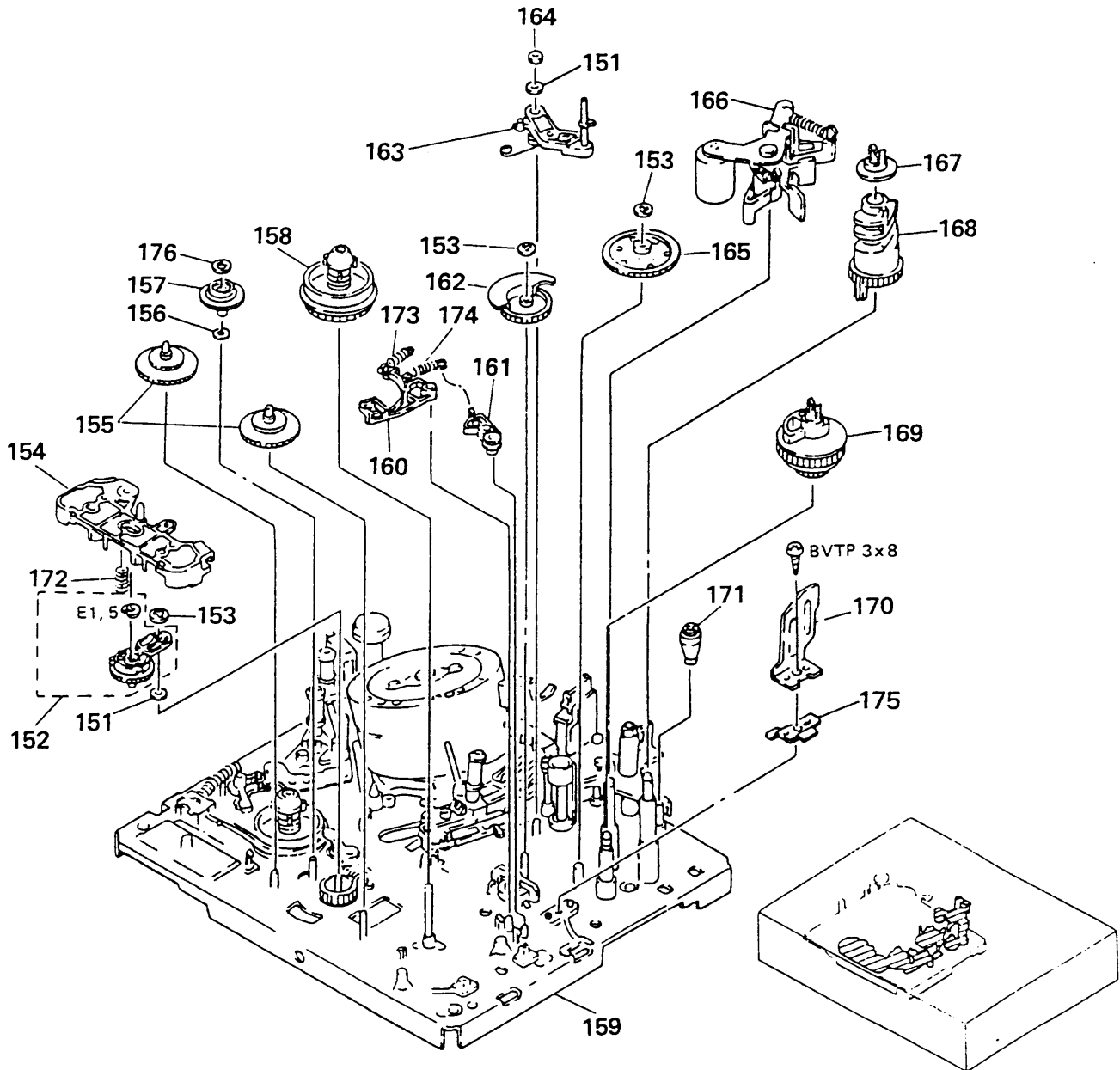


5-3. FL CASSETTE COMPARTMENT



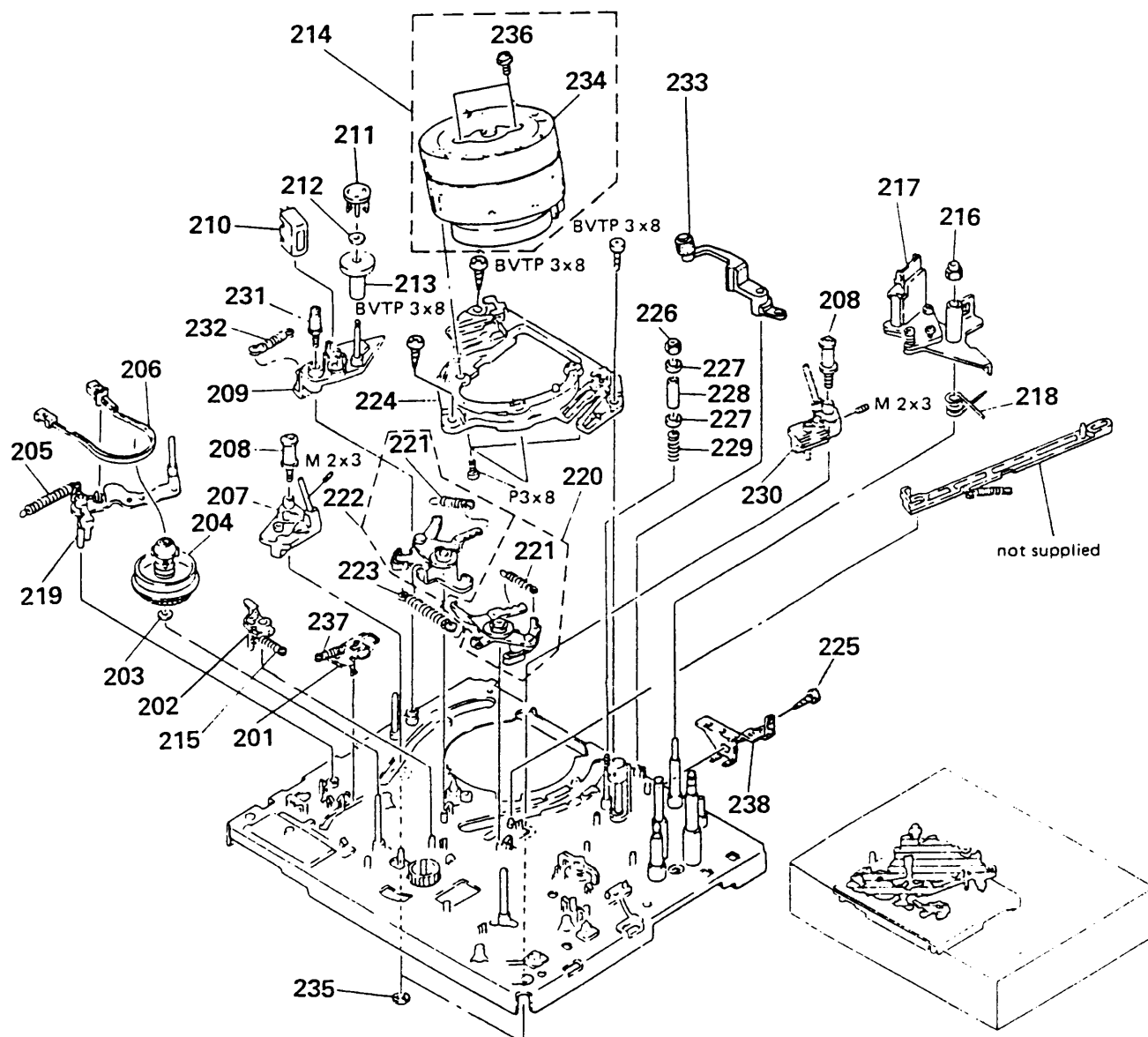
No.	Part No.	Description	Remark	No.	Part No.	Description	Remark
101	A-6751-421-A	FL BLOCK ASSY (M2)	102-110	106	3-736-164-01	WHEEL (FL), WORM	
102	3-716-144-02	RETAINER, WORM		107	3-736-100-01	GEAR (FL), WORM	
103	3-736-163-01	LEVER, ERASING PROTECTION		108	X-3727-784-1	MOTOR ASSY (LOADING) (M904)	
104	X-3727-775-2	GEAR (RIGHT) ASSY, MIDWAY		109	3-696-388-01	RUBBER, JOINT	
105	3-696-510-01	WASHER (3), STOPPER		110	3-739-687-01	SPRING, TENSION	

5-4. MECHANISM DECK 1



No.	Part No.	Description	Remark	No.	Part No.	Description	Remark
151	3-701-438-11	WASHER, 2.5		163	X-3729-911-1	ARM ASSY, RVS	
152	X-3727-776-1	ARM ASSY, PENDULUM		164	3-736-740-01	NUT (M2X0.25), NYLON	
153	3-669-595-00	WASHER (2), STOPPER		165	3-736-116-01	GEAR, COMMUNICATION	
154	3-736-172-02	RELEASE, LOCK, REEL		166	X-3727-770-1	PINCH ROLLER BLOCK ASSY	
155	X-3727-795-1	GEAR ASSY, RELAY		167	3-736-111-01	STOPPER	
156	3-736-074-01	RETAINER (SMALL), THRUST		168	3-736-136-01	CAM, ELEVATOR	
157	3-736-037-01	GEAR, REW		169	3-736-135-01	GEAR, PRESS CAM	
158	X-3727-798-1	TABLE ASSY, REEL		170	3-736-109-01	PLATE, OPEN, LID	
159	*A-6773-084-A	MD BLOCK ASSY 151-157,160-172,175,176 201-203,205-208,216,218,219,226-230 235,237,251-260,262,267-277,280-285 287-289,291,292,297		171	3-738-250-01	SCREW, AC ADJUSTMENT	
160	X-3733-335-1	BRAKE ASSY (AT), T SOFT		172	3-736-020-11	SPRING, COMPRESSION	
161	3-736-105-01	ARM, REV BRAKE		173	3-736-024-01	SPRING, TENSION	
162	3-736-143-01	GEAR, RVS CAM		174	3-736-025-01	SPRING (REV BRAKE), TENSION	
				175	3-744-227-01	SPRING (ATOM), FL GROUND	
				176	3-736-069-01	RETAINER, SPRING	

5-5. MECHANISM DECK 2



No.	Part No.	Description	Remark	No.	Part No.	Description	Remark
201	A-6759-483-A	TAKE-UP BLOCK ASSY (AT), S		220	X-3729-926-1	BRAKE ASSY (2), T	221
202	3-736-075-01	BRAKE, S SOFT		221	3-738-220-01	SPRING (MAIN BRAKE 2), TENSION	
203	3-738-212-21	RETAINER, THRUST, REEL TABLE		222	X-3733-336-2	BRAKE ASSY (2) (AT), S	221
204	X-3729-935-3	TABLE ASSY, REEL, SUPPLY		223	3-738-221-01	SPRING (MAIN BRAKE 1), TENSION	
205	3-733-389-11	SPRING, TENSION		224	*X-3746-005-1	BASE ASSY (G), DRUM	
206	X-3727-797-1	BAND ASSY, TENSION REGULATOR		225	3-736-055-01	SCREW (3X8), TAPPING	
207	X-3727-786-1	SHUTTLE (LEFT) ASSY		226	3-736-740-01	NUT (M2X0.25), NYLON	
208	X-3733-301-1	ROLLER ASSY, GUIDE		227	3-736-733-01	FLANGE, 7 GUIDE	
209	X-3727-767-1	BASE ASSY, STABILIZER		228	3-736-730-01	SLEEVE, #7 GUIDE	
210	1-543-647-11	HEAD, FE		229	3-736-729-01	SPRING, COMPRESSION	
211	3-736-082-01	RETAINER, TS THRUST		230	X-3727-787-1	SHUTTLE (RIGHT) ASSY	
212	3-741-925-01	RING, RETAINING		231	X-3727-788-1	ROLLER ASSY, GUIDE, #2	
213	X-3727-771-1	STABILIZER ASSY, TAPE		232	3-736-745-01	SPRING	
214	Δ 8-848-537-11	DRUM ASSY (DZH-21A-R) (M901)	234, 236	233	A-6747-267-C	ARM BLOCK ASSY (S), C ROLLER	
215	3-736-047-01	SPRING (S SOFT), TENSION		234	8-848-540-01	UPPER DRUM ASSY (DZR-21R)	
216	3-736-041-01	NUT (N3), NYLON		235	3-736-073-01	SLIDER, POLYETHYLENE	
217	A-6761-129-A	HEAD BLOCK ASSY, ACE		236	2-643-205-01	SCREW, FITTING +PW 3X8, UPPER DRUM	
218	3-736-042-01	SPRING, TORSION		237	3-738-284-01	SPRING, TENSION	
219	3-736-151-11	ARM (POM), TENSION REGULATOR		238	*3-738-249-01	PLATE, FIXED, MD	

Note: The components identified by mark Δ or dotted line with mark Δ are critical for safety. Replace only with part number specified.

This diagram shows an exploded view of a mechanical assembly. The components are numbered as follows:

- 263, 266, 262, 297, 260, 259, 258, 257, 264, 265, 293, 285, 286, 287, 288, 267, 257, 268, 269, 270, 271, 273, 274, 269, 272, 275, 276, 277, 280, 281, 282, 283, 284, 291, 256, 257, 258, 259, 260, 262, 263, 264, 265, 266, 267, 268, 269, 270, 271, 272, 273, 274, 275, 276, 277, 278, 279, 280, 281, 282, 283, 284, 285, 286, 287, 288, 289, 290, 291, 292, 293, 294, 295, 296, 297, 298, 299, 300, 301, 302, 303, 304, 305, 306, 307, 308, 309, 310, 311, 312, 313, 314, 315, 316, 317, 318, 319, 320, 321, 322, 323, 324, 325, 326, 327, 328, 329, 330, 331, 332, 333, 334, 335, 336, 337, 338, 339, 340, 341, 342, 343, 344, 345, 346, 347, 348, 349, 350, 351, 352, 353, 354, 355, 356, 357, 358, 359, 360, 361, 362, 363, 364, 365, 366, 367, 368, 369, 370, 371, 372, 373, 374, 375, 376, 377, 378, 379, 380, 381, 382, 383, 384, 385, 386, 387, 388, 389, 390, 391, 392, 393, 394, 395, 396, 397, 398, 399, 400, 401, 402, 403, 404, 405, 406, 407, 408, 409, 410, 411, 412, 413, 414, 415, 416, 417, 418, 419, 420, 421, 422, 423, 424, 425, 426, 427, 428, 429, 430, 431, 432, 433, 434, 435, 436, 437, 438, 439, 440, 441, 442, 443, 444, 445, 446, 447, 448, 449, 450, 451, 452, 453, 454, 455, 456, 457, 458, 459, 460, 461, 462, 463, 464, 465, 466, 467, 468, 469, 470, 471, 472, 473, 474, 475, 476, 477, 478, 479, 480, 481, 482, 483, 484, 485, 486, 487, 488, 489, 490, 491, 492, 493, 494, 495, 496, 497, 498, 499, 500, 501, 502, 503, 504, 505, 506, 507, 508, 509, 510, 511, 512, 513, 514, 515, 516, 517, 518, 519, 520, 521, 522, 523, 524, 525, 526, 527, 528, 529, 530, 531, 532, 533, 534, 535, 536, 537, 538, 539, 540, 541, 542, 543, 544, 545, 546, 547, 548, 549, 550, 551, 552, 553, 554, 555, 556, 557, 558, 559, 560, 561, 562, 563, 564, 565, 566, 567, 568, 569, 570, 571, 572, 573, 574, 575, 576, 577, 578, 579, 580, 581, 582, 583, 584, 585, 586, 587, 588, 589, 590, 591, 592, 593, 594, 595, 596, 597, 598, 599, 600, 601, 602, 603, 604, 605, 606, 607, 608, 609, 610, 611, 612, 613, 614, 615, 616, 617, 618, 619, 620, 621, 622, 623, 624, 625, 626, 627, 628, 629, 630, 631, 632, 633, 634, 635, 636, 637, 638, 639, 640, 641, 642, 643, 644, 645, 646, 647, 648, 649, 650, 651, 652, 653, 654, 655, 656, 657, 658, 659, 660, 661, 662, 663, 664, 665, 666, 667, 668, 669, 670, 671, 672, 673, 674, 675, 676, 677, 678, 679, 680, 681, 682, 683, 684, 685, 686, 687, 688, 689, 690, 691, 692, 693, 694, 695, 696, 697, 698, 699, 700, 701, 702, 703, 704, 705, 706, 707, 708, 709, 710, 711, 712, 713, 714, 715, 716, 717, 718, 719, 720, 721, 722, 723, 724, 725, 726, 727, 728, 729, 730, 731, 732, 733, 734, 735, 736, 737, 738, 739, 740, 741, 742, 743, 744, 745, 746, 747, 748, 749, 750, 751, 752, 753, 754, 755, 756, 757, 758, 759, 760, 761, 762, 763, 764, 765, 766, 767, 768, 769, 770, 771, 772, 773, 774, 775, 776, 777, 778, 779, 780, 781, 782, 783, 784, 785, 786, 787, 788, 789, 790, 791, 792, 793, 794, 795, 796, 797, 798, 799, 800, 801, 802, 803, 804, 805, 806, 807, 808, 809, 810, 811, 812, 813, 814, 815, 816, 817, 818, 819, 820, 821, 822, 823, 824, 825, 826, 827, 828, 829, 830, 831, 832, 833, 834, 835, 836, 837, 838, 839, 840, 841, 842, 843, 844, 845, 846, 847, 848, 849, 850, 851, 852, 853, 854, 855, 856, 857, 858, 859, 860, 861, 862, 863, 864, 865, 866, 867, 868, 869, 870, 871, 872, 873, 874, 875, 876, 877, 878, 879, 880, 881, 882, 883, 884, 885, 886, 887, 888, 889, 890, 891, 892, 893, 894, 895, 896, 897, 898, 899, 900, 901, 902, 903, 904, 905, 906, 907, 908, 909, 910, 911, 912, 913, 914, 915, 916, 917, 918, 919, 920, 921, 922, 923, 924, 925, 926, 927, 928, 929, 930, 931, 932, 933, 934, 935, 936, 937, 938, 939, 940, 941, 942, 943, 944, 945, 946, 947, 948, 949, 950, 951, 952, 953, 954, 955, 956, 957, 958, 959, 960, 961, 962, 963, 964, 965, 966, 967, 968, 969, 970, 971, 972, 973, 974, 975, 976, 977, 978, 979, 980, 981, 982, 983, 984, 985, 986, 987, 988, 989, 990, 991, 992, 993, 994, 995, 996, 997, 998, 999, 1000.

Labels and specifications include:

- BVTP 3x8
- BVTP 3x10
- not supplied
- PS 2.6x5

-87-