



Panoramic Roof Wind Noise, North America

Classification	Repair Bulletin	Section/Group	24 - Roof	Country/Region	North America
Year	2012-2013	Model	Model S	Version	All

Bulletin Classification: This repair bulletin provides instructions and guidelines for a noted condition or a customer concern. The information provided can address a broad range of known or perceived issues with the operation of Tesla vehicles. This bulletin might not be VIN-specific. These instructions assume knowledge of motor vehicle and high voltage electrical component repairs, and should only be executed by trained professionals. Tesla assumes no liability for injury or property damage due to a failure to properly follow these instructions or repairs attempted by unqualified individuals.

This Service Bulletin supersedes SB-13-24-006 R2, dated 4-Jun-14. Each content change is marked by a vertical line in the left margin. Discard the previous version and replace it with this one.

Condition

Some Model S vehicles might experience wind noise from the leading edge of the panoramic roof at high speed.

Correction

This bulletin applies only to vehicles in North America. For vehicles in Europe, refer to the latest revision of SB-13-24-005.

Upon customer complaint of wind noise from the panoramic roof, remove the front applique and install a bracket that provides more support for the moving glass latching tab. This should address wind noise issues and provide a higher level of perceived quality.

Correction Description	Correction	Time
Vehicle Inspection Only; Moving Glass Latch Bracket Installation Not Required	S011324006	0.20
Install Moving Glass Latch Bracket, North America	S021324006	2.65

Required Part(s):	Part Number	Description	Quantity
	1026859-S0-A	FRONT APPLIQUE KIT ASSY W/BRACKET, SVC	1
	1048645-00-A	DOW BETASEAL EXPRESS - 310ML	2
	1038607-00-A	3M ANTI SQUEAK TAPE (SERVICE ONLY)	1
		NOTE: Each roll of tape contains enough material for over 100 cars	

Inspect and Install the Latch Bracket

1. Fully open the moving glass.
2. Use a flashlight to look inside the hole in the front car cross seal (Figure 1). Inspect for an e-coated metal bracket that has black felt tape attached to the rear edge. If a bracket is present, do not continue with this procedure. If no bracket is present, continue this procedure.



Figure 1

3. Remove the panoramic roof front applique (refer to Service Manual procedure 24102402).
4. On both sides of the header, replace the 2 plugs for the outboard holes and the 1 patch for the inboard hole (Figure 2).

NOTE: If replacement parts are not available, cover all 6 holes with butyl patches.



Figure 2 (LH side shown)

5. Inspect the windshield seal. Replace the seal if it is damaged.
6. Reinstall the 2 forward bolts that secure the moving glass panel.

7. Fully close the moving glass.
8. Apply a piece of tape to the LH and RH sides of the bracket (Figure 3).



Figure 3

9. Position the bracket at the center of the front header, 1.5–2 mm from the edge of the moving glass (Figures 4 and 5). When the bracket is positioned correctly, secure it to the header with the pieces of tape.

NOTE: It might be necessary to bend the latching tab downward in order to correctly position the bracket.

⚠ CAUTION: When bending the latching tab, use a sheet metal bending tool, or similar tool, with wide clamps that are wrapped in flocked or felt tape (Figure 6) to avoid damaging the painted surface of the tab.

⚠ CAUTION: Take care not to crack the glass when adjusting the tab.

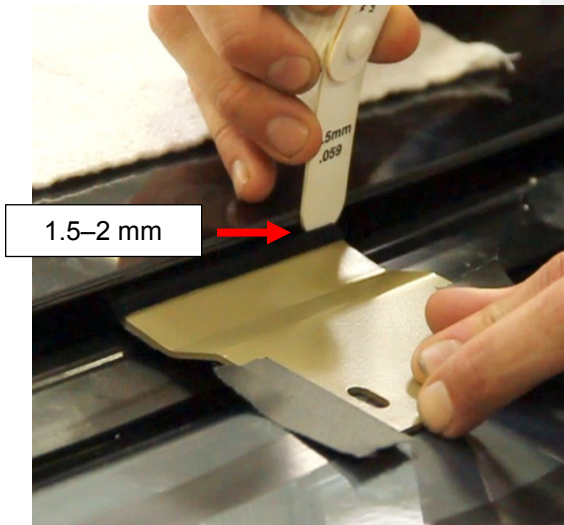


Figure 4

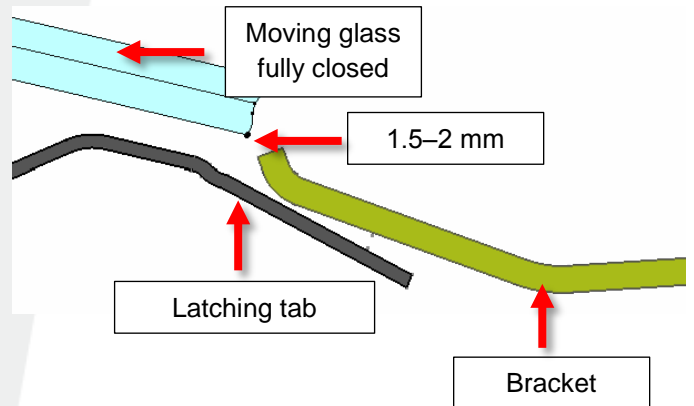


Figure 5



Figure 6

10. Use a 9 mm drill bit to mark drill holes in the header, but do not drill at this time (Figure 7).



Figure 7

NOTE: The bracket might have either 2 or 3 holes.

11. Open the moving glass and use a 2 mm bit to drill holes in the positions that were marked in the previous step. Use a 6 mm drill bit to expand the holes, then use a 9 mm drill bit to expand the holes to their full size.

NOTE: This method of slowly expanding the holes with increasingly larger drill bits prevents damaging the header.

12. Vacuum all metal shavings.

13. Wrap a piece of felt tape (included) along the rear edge of the bracket as shown. The tape should cover 3 mm on the top of the bracket (Figure 8). Cut any excess tape from the sides of the bracket.

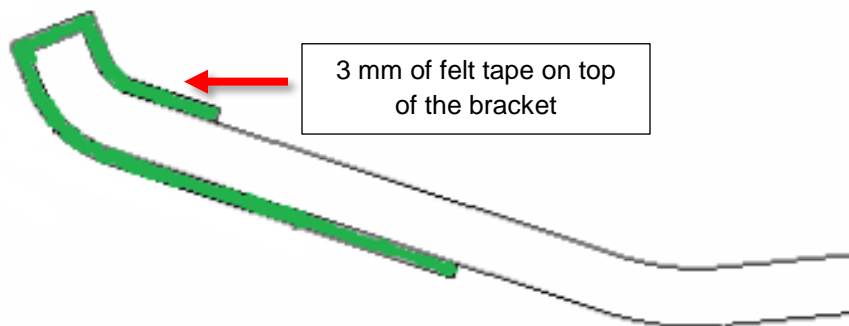


Figure 8

14. Coat the 2 rivnuts from the kit and the inside of the holes in the header with urethane.
15. Install the rivnuts.
16. Secure the bracket to the header by installing the bolts into the rivnuts (torque 8 Nm).
17. Close the moving glass and measure the vertical gap between the bracket and the latching tab on the moving glass. The gap should be 0–1 mm (Figure 9).

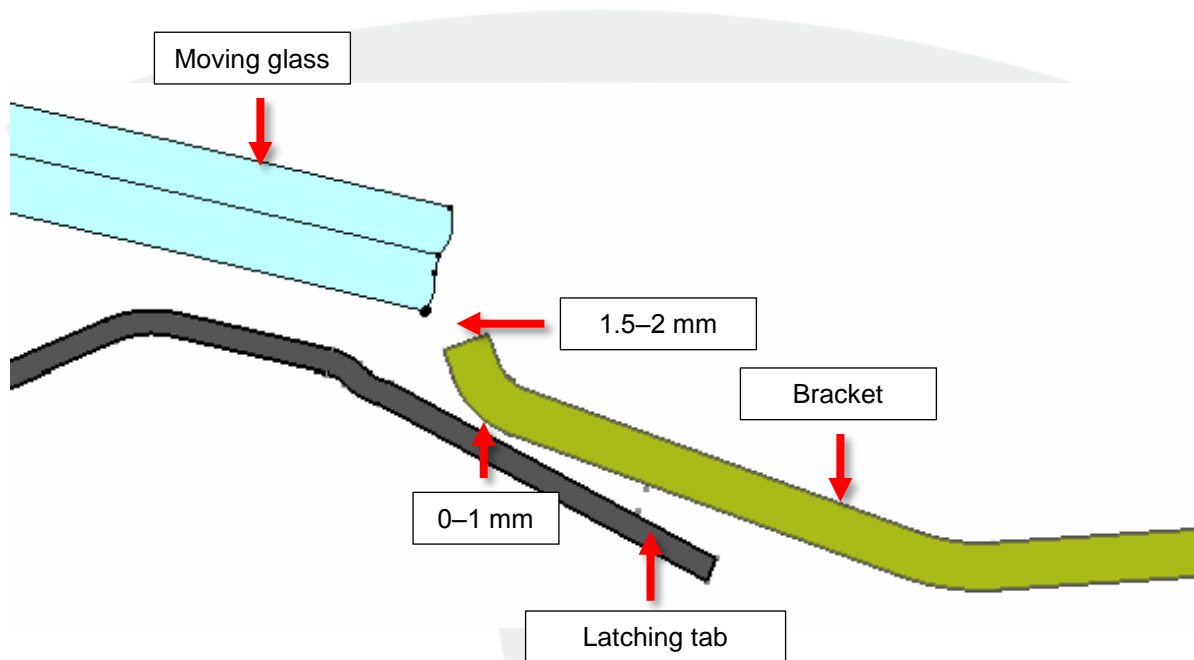


Figure 9

18. If the gap is greater than 1 mm, open the moving glass. Use a sheet metal bending tool, or similar tool, with wide clamps that are covered in flocking or felt tape (Figure 6) to bend the latching tab so that it is within 1 mm of the bracket.

⚠ CAUTION: Take care not to crack the glass when adjusting the tab.

19. Cut a piece of clear anti-squeak tape approximately 4 in (10 cm) long.
20. Cover the entire top of the latching tab with tape. Ensure that the tape is securely affixed to the latching tab.

NOTE: At this point, some tape protrudes over the edges of the latching tab.

21. Trim all excess tape that protrudes over the edges of the latching tab, but ensure that the entire area of the latching tab is covered (Figure 10).

NOTE: Ensure that no tape is visible from inside the vehicle.

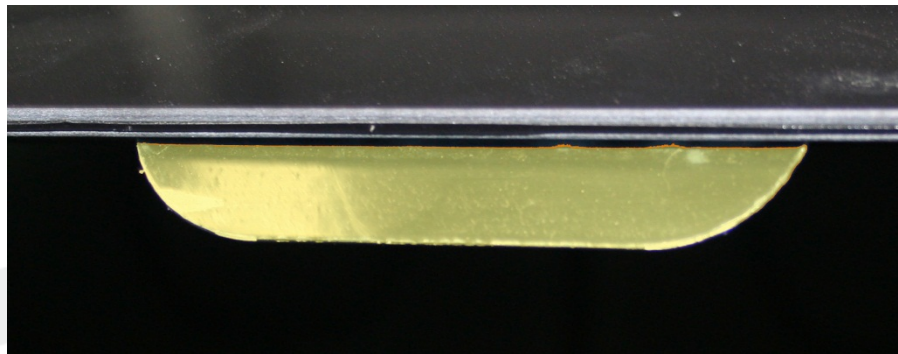


Figure 10

22. Install the new front applique. Ensure that the applique is positioned properly: When the roof is fully closed, the applique should be positioned 2-3 mm higher than the moving glass across the entire width of the moving glass panel, and the gap between the applique and the glass should be 3–5 mm.

⚠ WARNING: Do not drive the vehicle until the adhesive has cured. Refer to the adhesive packaging for the safe drive-away time.

Affected VIN(s) Affected Model S vehicles built through approximately September 17, 2013.

NOTE: This is a simplified summary of the affected VIN list. Refer to the VIN/Bulletin Tracker or Customer/Vehicle profile to determine applicability of this bulletin for a particular vehicle.

For feedback on the accuracy of this document, email ServiceBulletinFeedback@tesla.com.