



Upgrade Release Buttons on Mobile Connector Adapter Plug, Europe

Classification	Repair Bulletin	Section/Group	50 - External Charging Connectors	Country/Region	Europe
Year	All	Model	Model S	Version	All

Bulletin Classification: *This repair bulletin provides instructions and guidelines for a noted condition or a customer concern. The information provided can address a broad range of known or perceived issues with the operation of Tesla vehicles. This bulletin might not be VIN-specific. These instructions assume knowledge of motor vehicle and high voltage electricity repairs, and should only be executed by trained professionals. Tesla Motors assumes no liability for injury or property damage due to a failure to properly follow these instructions or repairs attempted by unqualified individuals.*

Condition

The 2 release buttons on the adapter plug of the European Mobile Connector might become loose or break off, causing a perceived quality issue. If this happens, the vehicle is still able to charge and the charge cable is still able to be released from the vehicle.

Correction

Upon customer complaint, replace the left and right release buttons on the adapter plug with upgraded parts.

Required Part(s):	Part Number	Description	Quantity
	1024869-10-B	BUTTON,L,RETAINING LATCH,TMC002	1
	1024000-10-B	BUTTON,R,RETAINING LATCH,TMC002	1
Correction Description	Correction	Time	
Inspection Only; Adapter Plug Button Upgrade Not Required	S011450004	0.05	
Replace Left and Right Release Buttons of Mobile Connector Adapter Plug	S021450004	0.05	

Procedure

NOTE: Perform this procedure for both the left and right release buttons on the plug.

1. Push the back of the button towards the front of the plug (Figure 1). The button snaps off the plug.



Figure 1

2. Insert the tab on the front edge of the new button (Figure 2) into the slot on the plug (Figure 3).

NOTE: The left and right release buttons are visually similar. Ensure that each button is installed on the correct side.

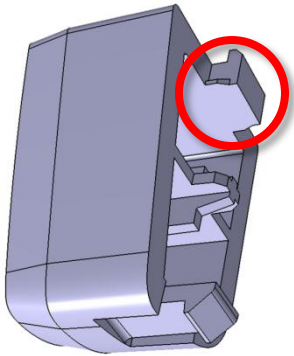


Figure 3

3. While keeping the tab in the slot, rotate the clip towards the back of the plug until it snaps into place (Figure 4).



Figure 4

For feedback on the accuracy of this document, email ServiceBulletinFeedback@teslamotors.com.