



Cold Draft or Wind Noise Coming From Fixed Glass

Classification Repair Bulletin **Section/Group** 11 - Closures **Country/Region** All

Year 2012-2015 **Model** Model S **Version** All

Bulletin Classification: This repair bulletin provides instructions and guidelines for a noted condition or a customer concern. The information provided can address a broad range of known or perceived issues with the operation of Tesla vehicles. This bulletin might not be VIN-specific. These instructions assume knowledge of motor vehicle and high voltage electrical component repairs, and should only be executed by trained professionals. Tesla Motors assumes no liability for injury or property damage due to a failure to properly follow these instructions or repairs attempted by unqualified individuals.

Condition

Some Model S customers have complained about a draft and/or wind noise coming from the fixed glass near the A-pillar. This condition is intensified when climate control is set to "Recirculate" or when the vehicle is moving.

NOTE: The draft is more noticeable in cold climates.

Correction

Upon customer complaint of a draft and/or wind noise coming from the fixed glass area, remove both front door panels and mocket seals, then install upgraded fixed glass seals (Figure 1) and foam strips (Figure 2).



Figure 1



Figure 2 (Foam strip highlighted)

Required Part(s):	Part Number	Description	Quantity
	1039364-00-A	FIXED GLASS SEAL LH	1
	1046148-00-A	FIXED GLASS SEAL RH	1
	1025401-00-A	CLIP, HEART FLEX W/ WSHR 70 LBS RETENTION	18
	1007167-00-B	SEAL MESH DEFROST	230 mm

Shop supplies:

Alcohol wipes

These part numbers were current at the time of publication. Use the revisions listed or later, unless otherwise specified in the Parts Manual.

Correction Description	Correction	Time
Vehicle Inspection Only; Fixed Glass Seals and Foam Strips Not Required	S011511002	0.10
Install LH And RH Foam Strips	S021511002	0.25
Install LH And RH Fixed Glass Seals And Foam Strips	S031511002	0.30

Procedure

1. Remove the driver's side front door trim panel (refer to Service Manual procedure 15130201).
2. Release the plastic pus pin that secures the mucket seal (Figure 3) then gently pull it out of the way (Figure 4).

NOTE: If possible, do not unhook the mucket seal from the window; it can be difficult to reinstall.

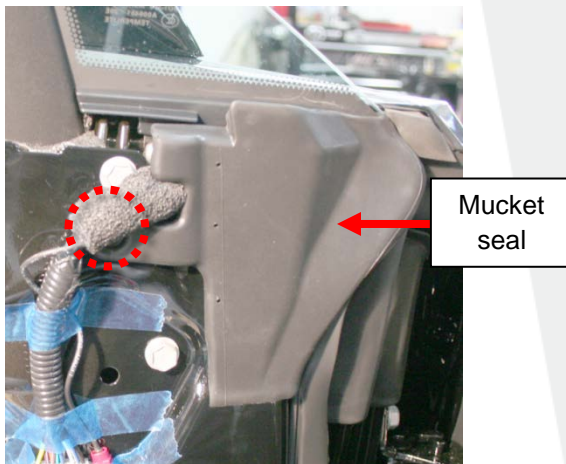


Figure 3

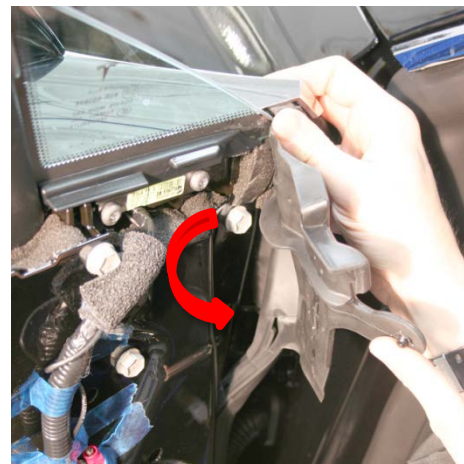


Figure 4

3. If equipped, remove any foam stuffed in the gaps below the fixed glass (Figure 5).

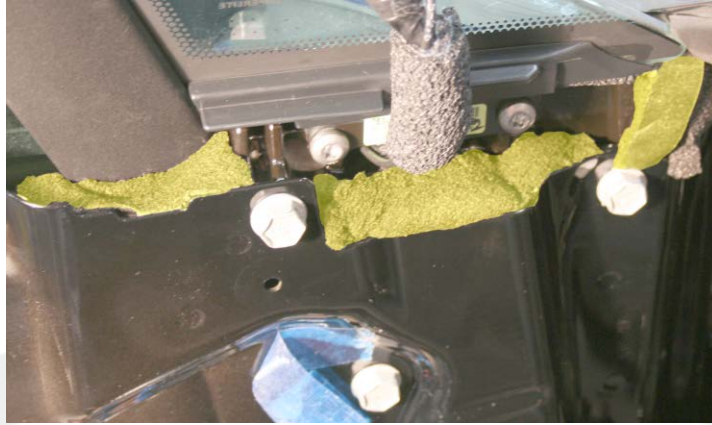


Figure 5 (Foam pieces highlighted)

4. Clean the inboard portion of the mirror bracket with alcohol. Allow the alcohol to fully dry before continuing this procedure.
5. Cut a strip of foam to approximately 115 mm in length.
6. Secure the foam to the mirror bracket so that the top is flush with the flaps under the fixed glass (Figure 6).

⚠ CAUTION: Do not allow the forward portion of the foam strip to protrude past the front of the fixed glass.

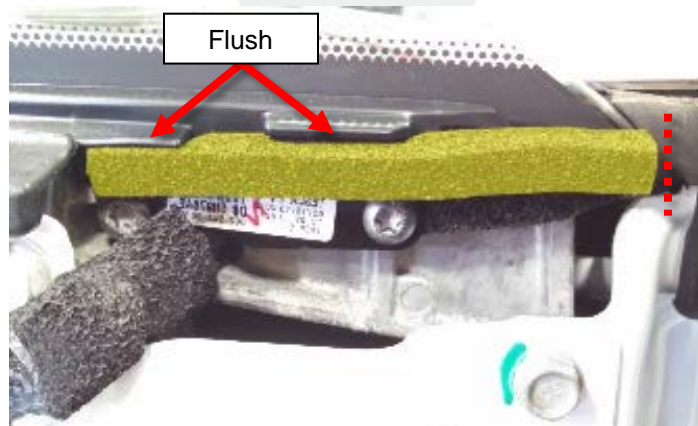
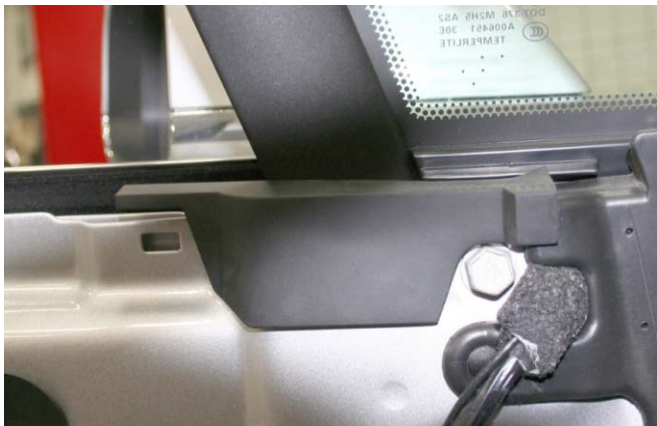


Figure 6 (Foam strip highlighted)

7. Reinstall the mocket seal.

8. If equipped, remove and discard the old fixed glass seal (Figure 8).

NOTE: If the vehicle is already equipped with the upgraded fixed glass seals (Figure 7), no more work is required on this side of the vehicle; reinstall the door panel and perform steps 1-7 on the passenger's side.



✓ **Figure 7 (Upgraded fixed glass seal)**



✗ **Figure 8 (Old fixed glass seal)**

9. Place the upgraded fixed glass seal straight down over the gap between the fixed glass and moving glass so that the flaps on the bottom side of the fixed glass seal rest on the edge of the sheet metal (Figures 9 and 10).

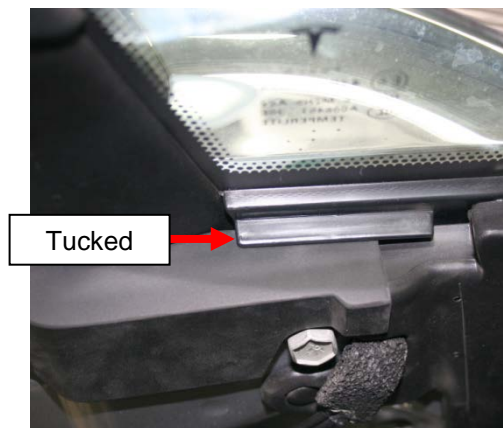


Figure 9 (Bottom side shown)



Figure 10

10. Tuck the front portion of the fixed glass seal under the flap near the fixed glass (Figures 11 and 12).



✓ **Figure 11 (Correct)**



✗ **Figure 12 (Incorrect)**

11. Ensure that there are no large gaps between the fixed glass seal and the front windows where air can enter the cabin. The fixed glass seal should follow the contour of the door panel (Figure 13).



Figure 13 (Contour of fixed glass seal shown)

12. Reinstall the driver's side front door trim panel.

⚠ CAUTION: Replace all flex heart clips before reinstalling the door trim panel; they are one-time use only.

13. Repeat steps 1-12 on the passenger's side.

Affected VIN(s) Affected Model S vehicles built before approximately March 25, 2015.

NOTE: This is a simplified summary of the affected VIN list. Refer to the VIN/Bulletin Tracker or Customer/Vehicle profile to determine applicability of this bulletin for a particular vehicle.

For feedback on the accuracy of this document, email ServiceBulletinFeedback@teslamotors.com.