



Replace Rear Door Primary Struts

Classification Campaign Bulletin **Section/Group** 11 - Closures **Country/Region** United States

Year 2016 **Model** Model X **Version** All

Bulletin Classification: *This campaign bulletin addresses a known non-safety-related condition and provides recommended technical diagnosis and repair procedures. Apply this procedure to all vehicles in the affected VIN range listed. These instructions assume knowledge of motor vehicle and high voltage electrical component repairs, and should only be executed by trained professionals. Tesla Motors assumes no liability for injury or property damage due to a failure to properly follow these instructions or repairs attempted by unqualified individuals.*

Condition

The rear door primary struts on some Model X vehicles are susceptible to a groaning or creaking noise when the doors are opening or closing.

Correction

Inspect the revision level of the rear door primary struts. If necessary, replace the struts.

Correction Description	Correction	Time
SB-16-11-001 Not Applicable	S011611001	0.00
Vehicle Inspection Only; Strut Replacement Due To Noise Not Necessary	S021611001	0.30
Replace 1 Rear Door Primary Strut Due To Noise	S031611001	0.35
Replace 2 Rear Door Primary Struts Due To Noise	S041611001	0.40
Replace 3 Rear Door Primary Struts Due To Noise	S051611001	0.45
Replace 4 Rear Door Primary Struts Due To Noise	S061611001	0.45

Required Part(s):	Part Number	Description	Quantity
If required:			
	1063440-00-C	RR DOOR EM STRUT – PRIMARY LH RR/RH FRT	0-2
	1063440-01-C	RR DOOR EM STRUT – PRIMARY LH FRT/RH RR	0-2

These part numbers were current at the time of publication. Use the revisions listed or later, unless otherwise specified in the Parts Manual.

Procedure

1. On the LH side of the vehicle, remove the rear upper door trim panel (refer to Service Manual procedure 15132302).
2. Remove the 3 screws that secure the front upper bracket (torque 2.5 Nm) (Figure 1).

NOTE: Some vehicles might have only 2 fasteners in this location.

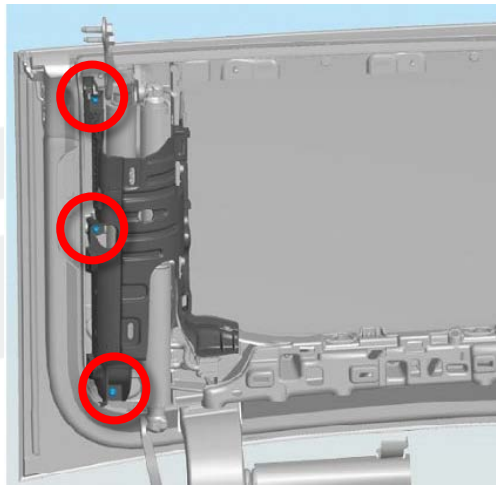


Figure 1

3. Remove the 3 bolts that secure the front upper bracket (torque 4 Nm) (Figure 2).

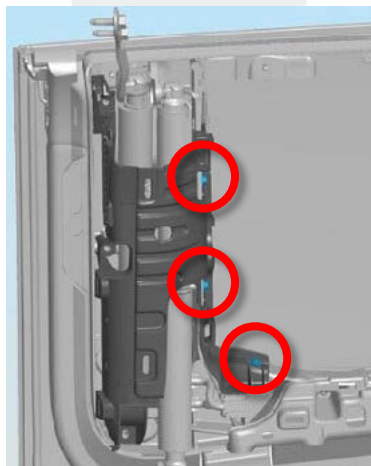


Figure 2

4. Remove the front upper bracket from the vehicle.

5. Inspect the revision level of the front primary strut (Figure 3):

- If it is revision "C" or later, reinstall the front upper bracket. Continue this procedure.
- If it is revision "B" or earlier, replace the forward primary strut (refer to Service Manual procedure 11331002).

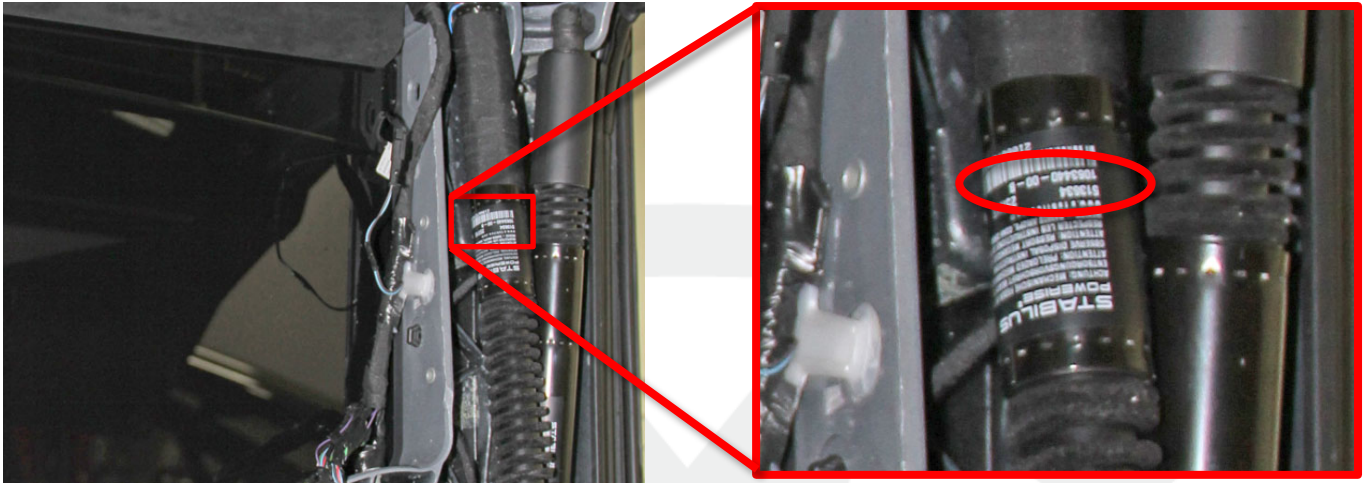


Figure 3

6. Repeat steps 2-5 for the rear upper bracket and rear primary strut.

7. Reinstall all components that were removed for access.

8. Repeat steps 1-7 on the RH side of the vehicle.

Affected VIN(s) Affected Model X vehicles built before approximately January 1, 2016.

NOTE: This is a simplified summary of the affected VIN list. Refer to the VIN/Bulletin Tracker or Customer/Vehicle profile to determine applicability of this bulletin for a particular vehicle.

For feedback on the accuracy of this document, email ServiceBulletinFeedback@teslamotors.com.