



Replace 3rd Row Seatbacks

Classification	Recall Bulletin	Section/Group	13 - Seats	Country/Region	United States
Year	2016	Model	Model X	Version	All

Bulletin Classification: *This Recall Bulletin must be applied to all vehicles listed below. Recall Bulletins are mandatory service procedures that must be carried out by Tesla-certified Service Centers only. Work must be logged and tracked by Tesla Service. Any work carried out by uncertified technicians on this issue may not be appropriately performed or recorded and could lead to an unsafe condition and/or void warranty provisions.*

This Service Bulletin supersedes SB-16-13-003 R1, dated 22-Apr-16. Each content change is marked by a vertical line in the left margin. Discard the previous version and replace it with this one.

Condition

The recliner mechanism in some 3rd row seats may slip under heavy loading, allowing forward movement of the seatback. This may result in failure of the vehicle to comply with FMVSS 207 and an increased risk of injury should a crash occur while either 3rd row seat is occupied.

Correction

Replace the 3rd row seatbacks. Replace the 3rd row seat frame or entire seat assembly, if necessary, per below instructions.

Correction Description	Correction	Time
Replace 3 rd Row Seatbacks	S011613003	1.75
Replace 3 rd Row Seatbacks And 3 rd Row Seat Frame	S021613003	3.50
Replace 3 rd Row Seat Assembly	S031613003	0.70
Replace 3 rd Row Seatback and Frame Assembly	S041613003	0.70

NOTE: In limited situations, replacement of the 3rd row seat assembly or the 3rd row seatback and frame assembly might be preferred for customer convenience. There is not a quality or functional reason that requires the replacement of the entire 3rd row seat assembly. Refer to Service Manual procedure 13060102 for seat assembly replacement instructions and use correction code S031613003 or S041613003.

Required Part(s):	Part Number	Description	Quantity
	1022449-00-A	BLT,BFLG,TRX,M10x28.4[10.9]-SM-NP-08	8
	1055365-00-B	WSHR FL M10x24x3 [10]-G720	8
	1068442-00-A	BOLT M12 X 21.5 TORX LK PC10.9 BZ	8
	1068161-00-A	MX 3R ASSY TRAY CABLE LH	1
	1068160-00-A	MX 3R ASSY TRAY CABLE RH	1
	1073271-00-A	SCREW M5 X 65 PAN PC4.4 CZ	4
	1073325-00-A	NUT HEX M5x5 STL NYLOC	4
	1076298-00-A	BLIND RIVET, 4.8x1.5-9.5, STL, BLK	4
	1088730-00-A	WASHER, 13MM OD, 5.3MM ID, T=3MM	4

Seatback sets, as required:

1091079-01-A	3RD ROW SEAT BACK, LH, WHT, SERVICE	1
1091084-01-A	3RD ROW SEAT BACK, RH, WHT, SERVICE	1
1091079-02-A	3RD ROW SEAT BACK, LH, BLK, SERVICE	1
1091084-02-A	3RD ROW SEAT BACK, RH, BLK, SERVICE	1
1091079-03-A	3RD ROW SEAT BACK, LH, TAN, SERVICE	1
1091084-03-A	3RD ROW SEAT BACK, RH, TAN, SERVICE	1
1095007-00-A	3RD ROW SEAT BACK AND FRAME ASY,LUX,WHT	1
1095007-01-A	3RD ROW SEAT BACK AND FRAME ASY,LUX,BLK	1
1095007-02-A	3RD ROW SEAT BACK AND FRAME ASY,LUX,TAN	1

If required:

1066895-00-B	STRUCT ASSY - 3R RSC	1
1073329-00-A	BOLT 7/16 UNF x 36 HEX FLANGE SCREW MPOINT	1
1073330-00-A	NUT HF 7/16x17.4 STL NYLOC	1
1066957-00-A	SEAT BKT COVER KELP CTR	1
1066891-01-A	CVR RECL 3R MDL X LH WHITE	1
1066891-02-A	CVR RECL 3R MDL X LH BLACK	1
1066891-03-A	CVR RECL 3R MDL X LH TAN	1
1066892-01-A	CVR RECL 3R MDL X RH WHITE	1
1066892-02-A	CVR RECL 3R MDL X RH BLACK	1
1066892-03-A	CVR RECL 3R MDL X RH TAN	1
1066955-00-A	SEAT BKT COVER LH	1
1066956-00-A	SEAT BKT COVER RH	1
1066877-00-A	GROMMET - RSB BOLSTER	1

Shop supplies:

Electrical tape
Cable ties
Orange paint marker (1054784-00-A or equivalent)

These part numbers were current at the time of publication. Use the revisions listed or later, unless otherwise specified in the Parts Manual.

Special Tool(s):	Part Number	Description
	1032900-00-A	Inductive Heating Tool
	1060071-00-A	Torque Wrench 1-5 NM
	1054713-00-A	Rivet Tool

Seatback Removal

⚠ CAUTION: Unless otherwise noted, all fasteners and washers are one-time use only. All removed fasteners must be discarded and replaced with new ones.

1. Fold down both 3rd row seats.
2. Lift the front portion of the liftgate load floor and remove the load floor from the vehicle (Figure 1).



Figure 1

3. Pull the trunk floor carpet towards the rear of the vehicle to gain access to the hardware on the rear of the 3rd row seats.
4. Carefully release the seat bracket cover and remove it from the 3rd row seat assembly (Figure 2).



Figure 2 (Seat bracket cover highlighted)

⚠ WARNING: Wear cut-resistant gloves when handling the seat assembly. The seat frame has sharp edges.

5. Remove the 3rd row seat assembly (refer to Service Manual procedure 13060102).
6. Disconnect the lower cushion wiring harness connectors.
7. Remove the lower cushion from the 3rd row seat assembly.
8. On the LH and RH sides of the 3rd row seat assembly, remove the bolt that secures the outer recliner cover to the seat (Figure 3). Remove the outer recliner cover.



Figure 3 (LH outer recliner cover shown)

9. Remove the LH and RH inner recliner covers (Figure 4).



Figure 4 (RH inner recliner cover highlighted)

10. Remove the center recliner cover (Figure 5).



Figure 5 (Center recliner cover highlighted)

11. Remove the bolts that secure the LH and RH seat belt lower mount brackets to the seat frame (Figure 6).

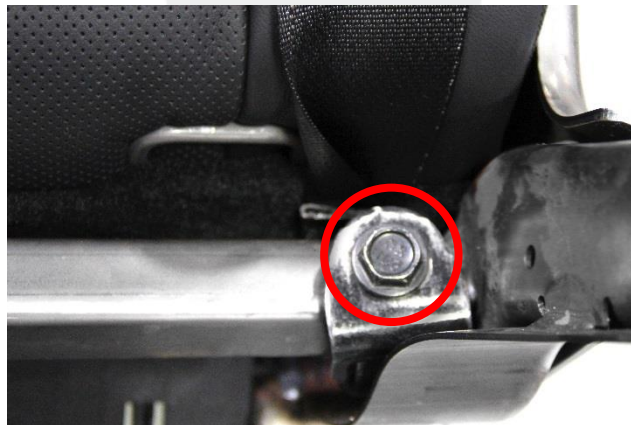


Figure 6

12. Disconnect the seat wiring harness connectors.

13. Remove the 2 screws and 2 nuts that secure the RH seat cable tray assembly to the seat frame. Repeat this step on the LH seat. Discard the screws and nuts (Figure 7).

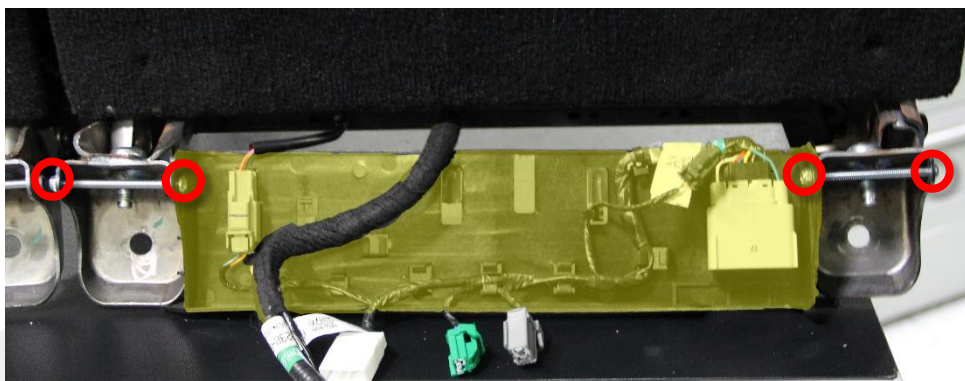


Figure 7 (RH cable tray assembly highlighted)

14. Remove the wiring harnesses from the cable trays and transfer them to the new cable trays. Discard the old cable trays.

15. Remove and discard the 2 outer bolts that secure the LH seatback to the seat frame (Figure 8).



Figure 8

16. Remove and discard the 2 inner bolts that secure the LH seatback to the seat frame (Figures 9 and 10).



Figure 9



Figure 10

17. Remove the LH seatback from the seat frame.

18. Repeat steps 15–17 for the RH seatback.

Seatback Installation

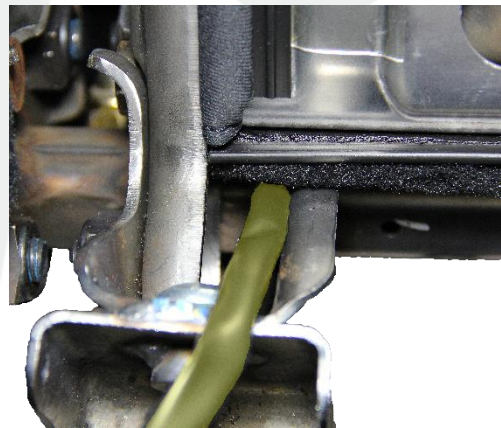
⚠ CAUTION: Unless otherwise noted, all fasteners and washers are one-time use only. All removed fasteners must be discarded and replaced with new ones.

⚠ WARNING: Before installing the seatback onto the seat frame, make sure that the seatbelt buckle harness is not pinched (Figures 13 and 14).

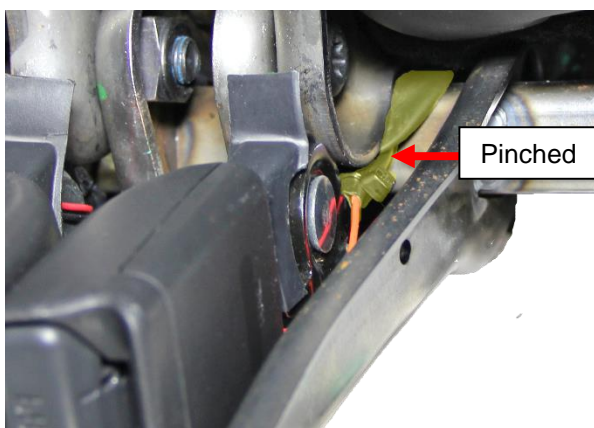
1. Place the new LH seatback in position onto the seat frame. Route the seat belt between the seatback and the seat frame without pinching the seatbelt buckle harness (Figures 11 and 12)



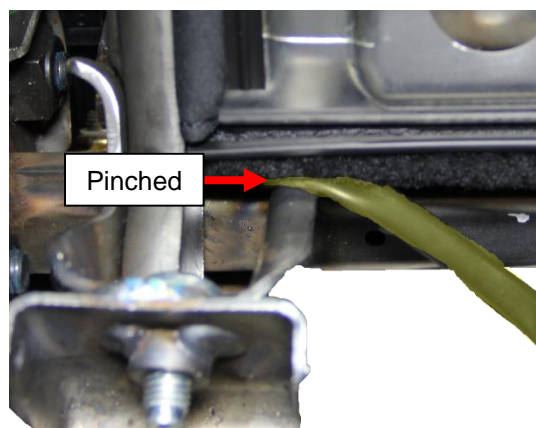
✓ Figure 11 (Correct; front shown)



✓ Figure 12 (Correct; rear shown)



✗ Figure 13 (Incorrect; front shown)



✗ Figure 14 (Incorrect; rear shown)

2. Loosely install the 2 new outer bolts that secure the LH seatback to the seat frame (Figure 15). Do not fully torque the bolts at this time.



Figure 15

⚠ CAUTION: Do not use any tools to force the seatbacks to align with the holes on the seat frame. All 4 seatback bolt holes must align with the holes on the seat frame without applying excessive force. If any seatback bolt holes do not easily align with the seat frame, remove the seatback and repeat steps 1–3 with a new seatback.

3. Loosely install the 2 new inner bolts that secure the LH seatback to the seat frame (Figures 16 and 17). Do not fully torque the bolts at this time.

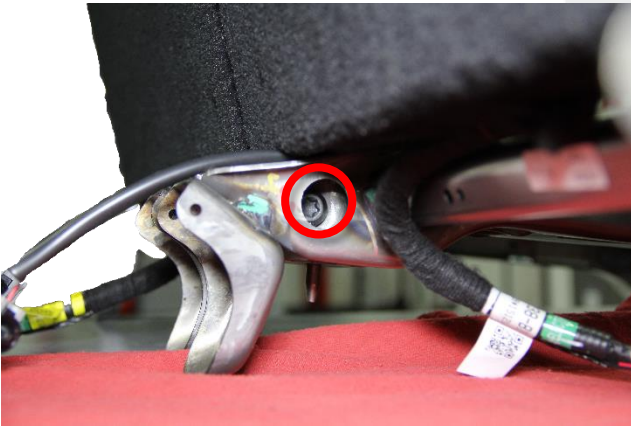


Figure 16



Figure 17

4. Repeats steps 1–3 for the RH seatback.

5. Tighten the inner and outer bolts that secure the LH and RH seatbacks to the seat frame in the sequence shown (torque 40 Nm) (Figure 18). Mark the bolts with an orange paint pen.

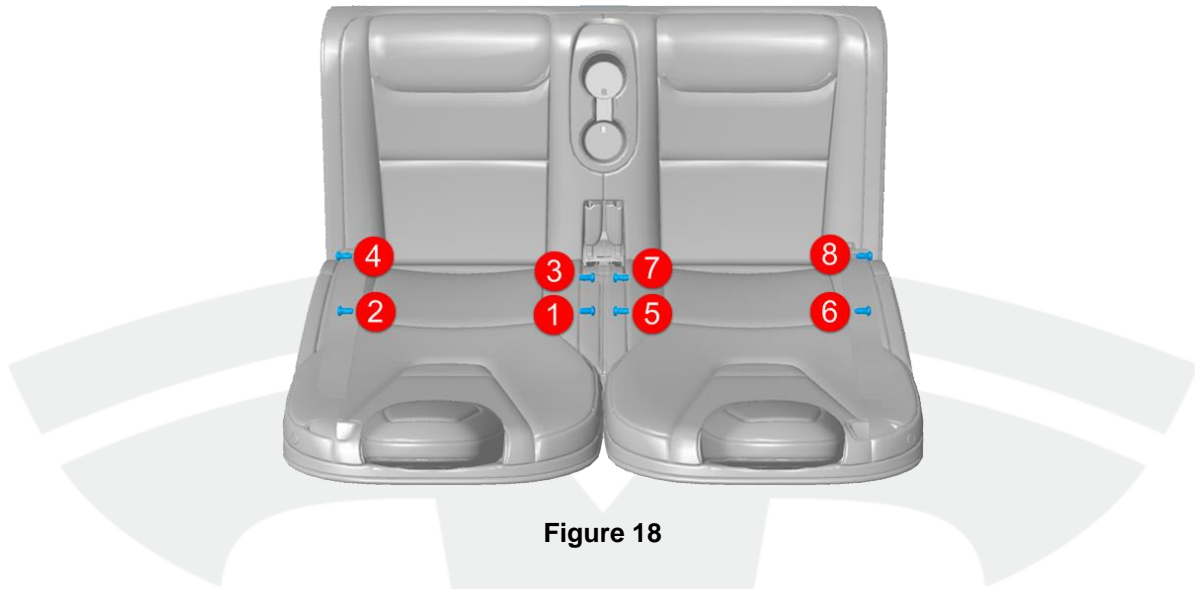


Figure 18

6. Wrap the LH seat belt around the lower seat frame (Figure 19).



Figure 19 (Seat belt highlighted)

7. Secure the seat belt lower mount bracket to the seat frame with a new bolt (torque 45 Nm) (Figure 20). Mark the bolt with an orange paint pen.

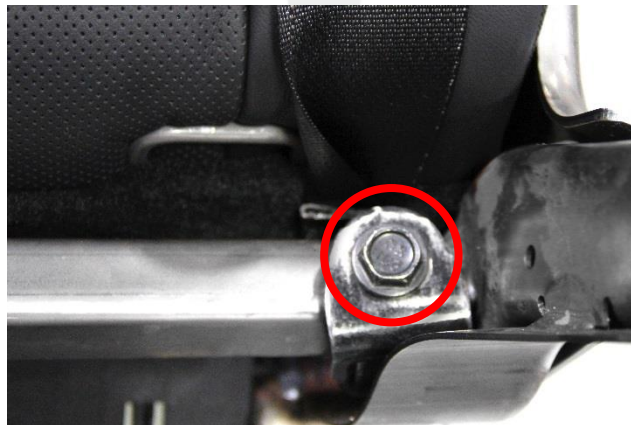


Figure 20

8. Repeat steps 6 and 7 for the RH seat belt.
9. Install new LH and RH cable tray assemblies (Figure 21). Secure each cable tray assembly with 2 new screws and nuts.

NOTE: The LH cable tray has a black harness connector and the RH cable tray has a gray harness connector.

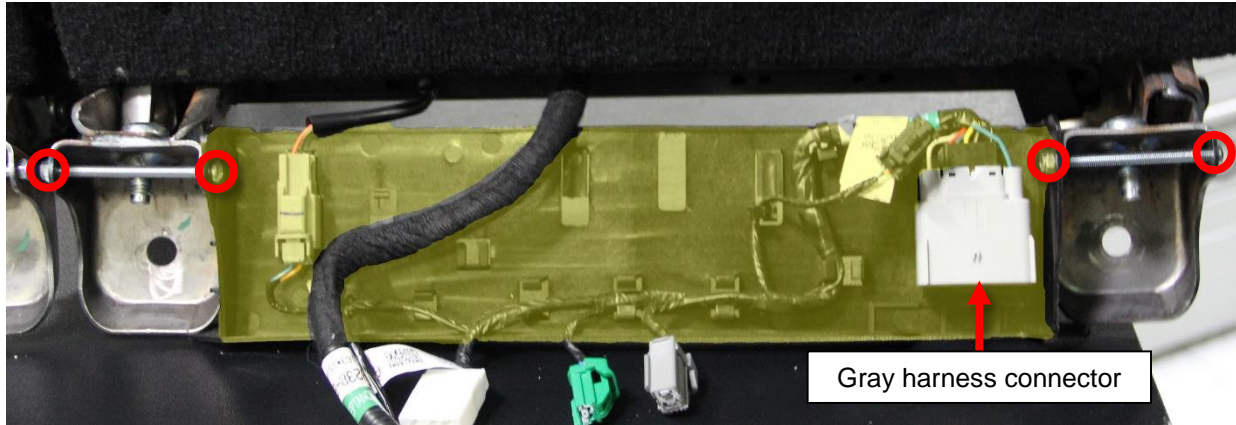


Figure 21 (RH cable tray assembly highlighted)

10. Connect the seat wiring harness connectors.

NOTE: For vehicles without heated rear seats, wrap the unused wiring harness connectors with electrical tapes, then secure the heated seat connectors to the cable tray assembly with cable ties (Figure 22). Remove any excess cable tie.



Figure 22

11. Install the seat bracket cover (Figure 23).



Figure 23 (Seat bracket cover highlighted)

12. Install the center recliner cover (Figure 24).



Figure 24 (Center recliner cover highlighted)

13. Install the LH and RH inner recliner covers (Figure 25).



Figure 25 (Inner recliner cover highlighted, RH shown)

14. Install the outer LH and RH recliner covers. Secure each cover with a bolt (torque 2.5 Nm) (Figure 26).



Figure 26 (LH outer recliner cover shown)

15. Install the lower cushion.

16. Connect the lower cushion wiring harness connectors.

17. Install the 3rd row seat assembly (refer to Service Manual procedure 13060102).

18. Check for proper latching of the seatbacks in the folded and raised positions:

- If the seatbacks move smoothly without binding, continue to the next step.
- If the seatbacks bind or are excessively difficult to move while folding, ensure that the seat bracket cover and the inner, outer, and center recliner covers are correctly installed. If no interference is present, replace the 3rd row seat frame. Skip to the “Seat Frame Replacement” section of this document.

19. Peel off the backing film to expose the 6 adhesive strips (Figure 27).



Figure 27

20. Inspect the lower corners of the new third row seat backing for rivet holes (Figure 4):

- If rivet holes are present, skip to step 25.
- If no rivet holes are present, continue to the next step.

⚠ CAUTION: To prevent fraying of the side trim flap, leave a small section of the plastic retainer attached to the threads on the flap (Figure 29).

21. On the RH base of the seat, cut off the lower 2 cm of the plastic retainer that secures the flap on the side trim to the seat frame, if necessary (Figure 28).

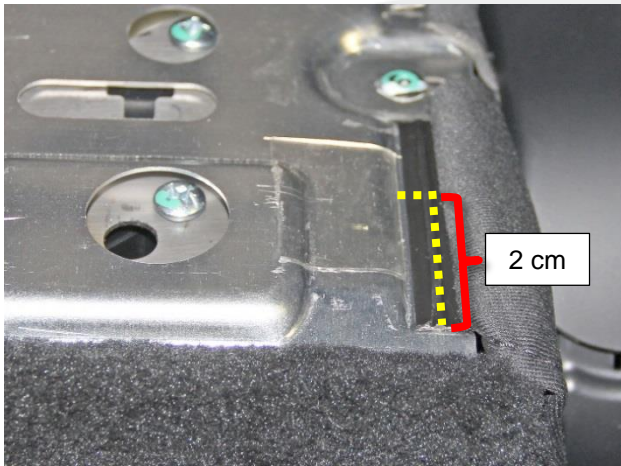


Figure 28

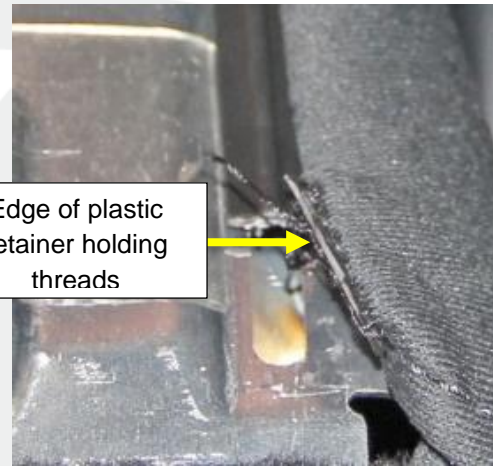


Figure 29

22. Mark the location for a drill hole 3 cm up and 4.5 cm inboard from the lower corner of the seat (Figure 30).

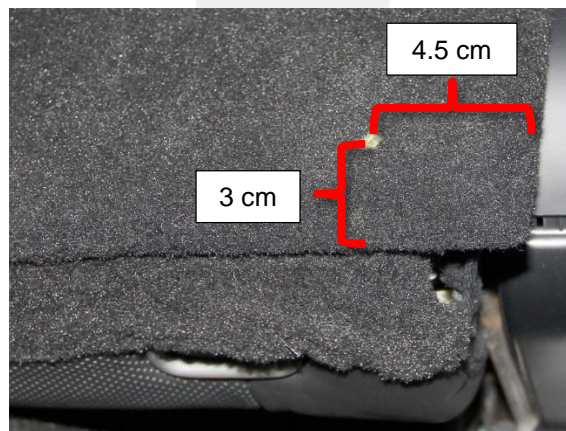


Figure 30

23. Use a 11/64 in (4.5 mm) drill bit to drill a hole through the seat backing.

24. Repeat steps 21–23 for the left side of the LH seat backing and both sides of the RH seat backing.

25. Partially install the LH seat backing by securing the 7 upper clips to the LH seatback (Figure 31). Do not attach the 2 lower clips at this time.

NOTE: Insert the cargo hook through the carpet backing during installation (Figure 32).



Figure 31

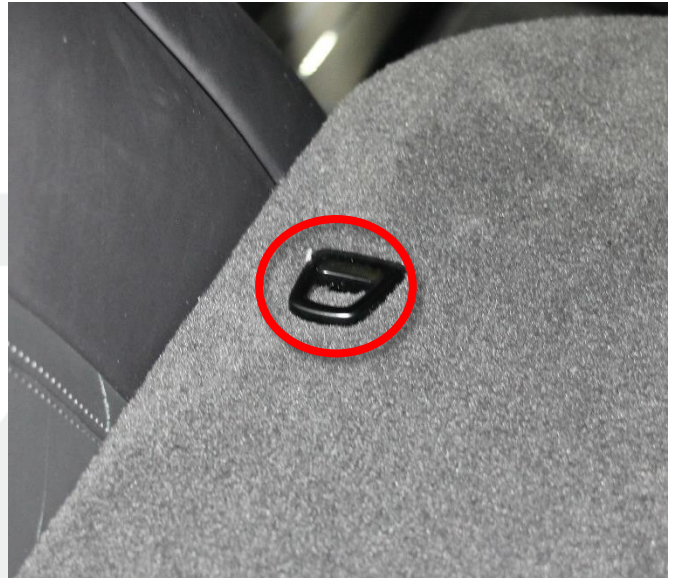


Figure 32

26. Insert a rivet into the hole located near the lower RH corner of the carpet backing (Figure 33).



Figure 33 (Rivet shown at bottom RH corner of LH seatback)

27. While holding the rivet in place, lift up the seat backing. Install a washer onto the shank (Figure 34). While holding the washer in place, lower the seat backing.

NOTE: Ensure that the washer remains installed on the mandrel.

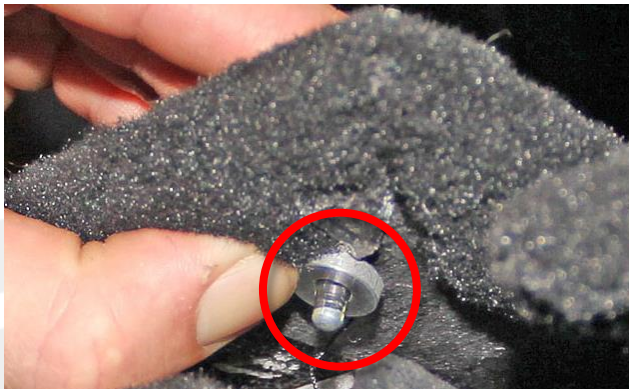


Figure 34

28. Use the rivet tool to fully install the rivet.

TIP: Press the rivet tool firmly against the seatback to ensure proper rivet installation.

29. Repeat steps 26–28 on the lower RH corner of the carpet backing.

30. Verify that the 9 clips on the carpet backing are securely attached to the seatback (Figure 35).



Figure 35

31. Verify that the rivets are securely fastened to the seatback by pulling on each lower corner of the carpet backing.

32. Repeat steps 19–31 on the RH seat backing.

Seat Frame Replacement

NOTE: Do not perform this procedure unless the new seatbacks bind and require excessive force to fold.

1. Repeat the “Seatback Removal” section of this document.
2. Remove and discard the bolt and nut that secure the seat belt buckle assembly to the seat frame (Figure 36).

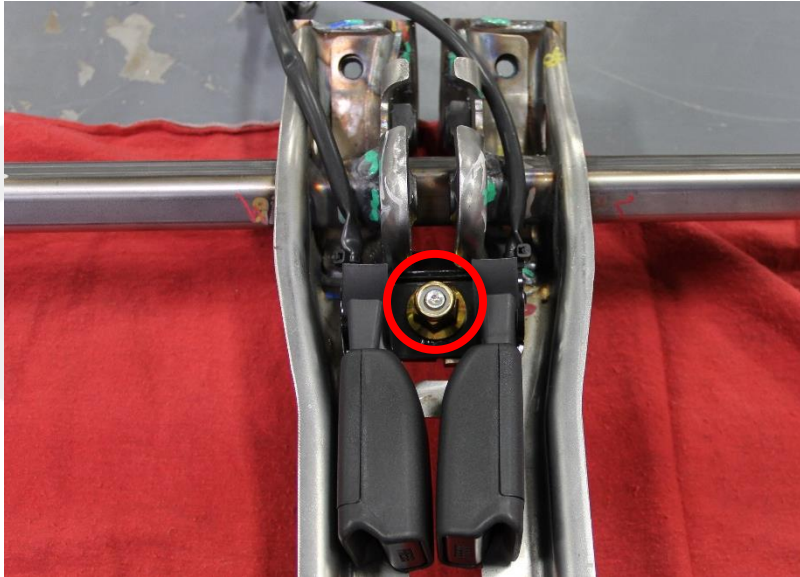


Figure 36

3. Transfer the seat belt buckle assembly to the new seat frame and secure it with a new bolt and nut (torque 45 Nm). Mark the bolt with an orange paint pen.
4. Repeat the “Seatback Installation” section of this document.

NOTE: If the seatbacks continue to bind after being installed on a new seat frame, discontinue this procedure and contact Service Engineering.

Affected VIN(s) Affected Model X vehicles with 3rd row seats built before approximately March 19, 2016.

NOTE: This is a simplified summary of the affected VIN list. Refer to the VIN/Bulletin Tracker or Customer/Vehicle profile to determine applicability of this bulletin for a particular vehicle.

For feedback on the accuracy of this document, email ServiceBulletinFeedback@tesla.com.