



Trunk Gap Hider and Bracket Retrofit

Classification	Repair Bulletin	Section/Group	15 - Interior Trim	Country/Region	All
Year	2016-2017	Model	Model X	Version	All

Bulletin Classification: This repair bulletin provides instructions and guidelines for a noted condition or a customer concern. The information provided can address a broad range of known or perceived issues with the operation of Tesla vehicles. This bulletin might not be VIN-specific. These instructions assume knowledge of motor vehicle and high voltage electrical component repairs, and should only be executed by trained professionals. Tesla assumes no liability for injury or property damage due to a failure to properly follow these instructions or repairs attempted by unqualified individuals.

This Service Bulletin supersedes SB-17-15-003, dated 3-Apr-17. Each content change is marked by a vertical line in the left margin. Discard the previous version and replace it with this one.

Condition

Some 5-seat Model X vehicles do not have the trunk gap hider and brackets installed.

Correction

Install the trunk gap hider and brackets.

Correction Description	Correction	Time
Vehicle Inspection Only; Trunk Gap Hider and Bracket Retrofit Not Required	S011715003	0.05
Retrofit Trunk Gap Hider Using Existing Template	S021715003	0.20
Retrofit Trunk Gap Hider Using New Template	S031715003	0.40

Required Part(s):	Part Number	Description	Quantity
	North America:		
	1118532-00-A	Service Kit MX 5-Seater Retrofit	1
	Europe, Asia-Pacific:		
	1118532-99-B	Service Kit MX 5-Seater and Tether LBL	1
	Shop supplies:		
	Precision knife or box cutter		
	Measuring tape		
	Dead blow hammer		

These part numbers were current at the time of publication. Use the revisions listed or later, unless otherwise specified in the Parts Manual.

Prepare the Template

1. If the template has already been prepared, skip to the "Procedure" section of this document. Otherwise, continue to the next step.
2. Obtain a piece of cardboard at least 39 in (1000 mm) long and at least 6 in (150 mm) wide.
3. Use the precision knife or box cutter to trim the length to 38.3 in (974 mm).
4. Trim the width to 5.9 in (150 mm).
5. Cut rectangles into the cardboard according to the dimensions of this template (Figure 1):
 - a. Use a measuring tape and pen to mark the position of cutouts A on both sides of the cardboard. Cutouts A are located 0.5 in (12.8 mm) from the sides, 0.8 in (20 mm) from the front, with a size of 2.8 in x 1.2 in (71 mm x 30 mm).
 - b. Mark the position of cutout B near the center of the cardboard. Cutout B is located 16.25 in (413.3 mm) from the LH side, 0.8 in (20 mm) from the front, with a size of 5.8 in x 1.2 in (147 mm x 30 mm).
 - c. Mark the position of cutouts C on both sides of the cardboard. Cutouts C are located 1.1 in (27.8 mm) from the sides, 1.4 in (36.5 mm) from the rear, with a size of 1.6 in x 0.7 in (40 mm x 18 mm).
 - d. Use the knife to cut openings into the cardboard at cutouts A, B, and C.

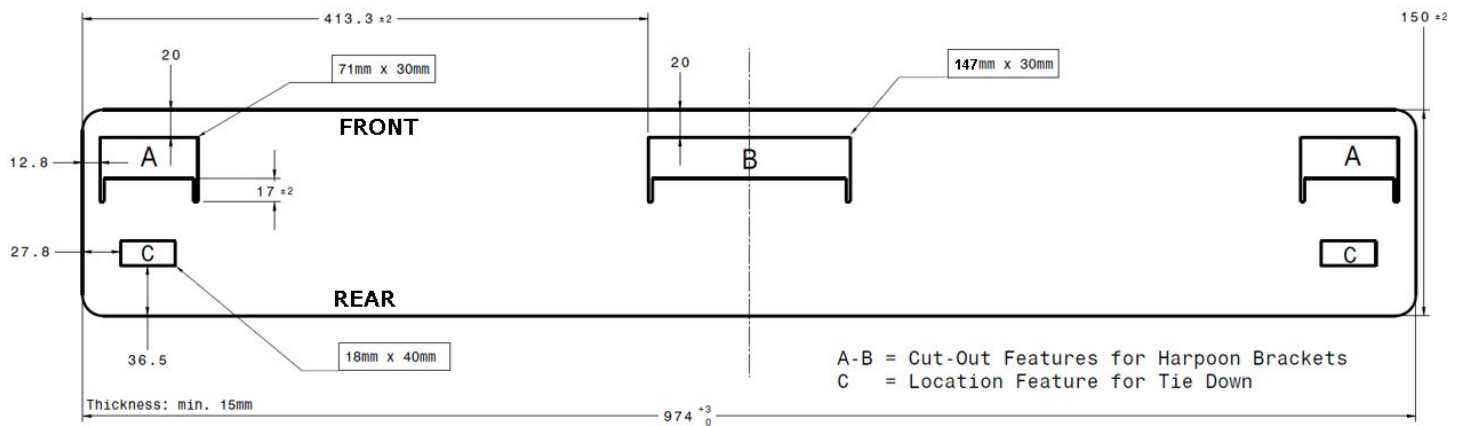


Figure 1

Procedure

1. Open the liftgate.
2. If installed, remove the trunk load floors.

3. Cover the trunk sill and trunk floor carpet with mats or protective material (Figure 2).



Figure 2

4. If installed, remove the gap hider.
5. Raise the tie-down loops vertically and set the template down with cutouts C over the tie-down loops (Figure 3).



Figure 3

6. Gently slide the template forward so that the tie-down loops are pushed into an upright position (Figure 4).



Figure 4

7. Hold the template securely, and use the knife to cut out the carpeting at cutout A on the LH and RH sides (Figure 5).



Figure 5

8. Hold the template securely, and use the knife to cut out the carpeting at cutout B.
9. Remove the cardboard template.
10. Remove the carpet from cutouts A and cutout B.
11. Use the knife to remove the NVH foam underneath cutout B (Figure 6).



Figure 6

12. Remove any butyl patches that cover the 2 holes in the body at cutout B.

13. Align the center gap hider bracket with the mounting holes and make sure the locating pin is seated in the body (Figure 7).



Figure 7

14. Install the 2 bolts to secure the center gap hider bracket (torque 10 Nm) (Figure 8).



Figure 8

15. Use the knife to remove the NVH foam underneath LH cutout A.
16. Remove the bolt that secures the LH tie-down bracket, but leave the bracket in position.
17. Place the LH outboard gap hider bracket on top of the LH tie-down bracket.
18. Align the ribs on the gap hider outboard bracket with the notches in the tie-down bracket (Figure 9).

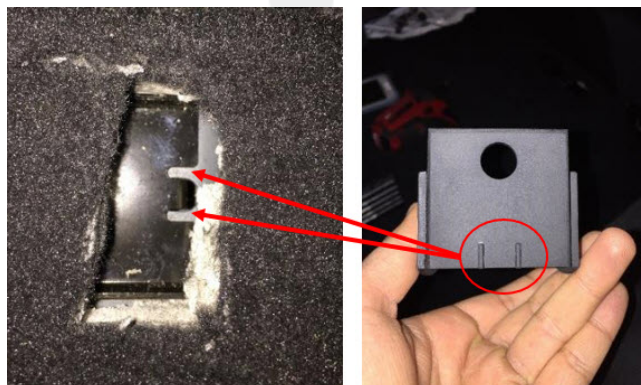


Figure 9

19. Reinstall the bolt to secure the LH outboard gap hider bracket and LH tie-down bracket (torque 10 Nm) (Figure 10).



Figure 10

20. Repeat steps 15-19 on RH cutout A.

21. Install the gap hider into position over all three gap hider brackets.

NOTE: On the bottom of the gap hider are holes for the gap hider brackets and arrows that indicate the rear of the vehicle.

22. Gently tap the gap hider into position with a dead blow hammer (Figure 11).



Figure 11

23. Make sure that there is no gap between the carpet and the bottom edge of the gap hider (Figure 12).

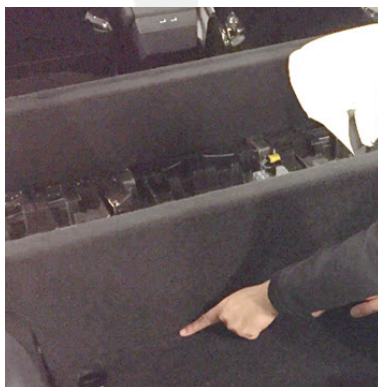


Figure 12

24. Clean up any debris and remove any mats or protective material.

25. Install the new flat trunk load floor.

26. Install the new rear trunk load floor.

Affected VIN(s) Affected Model X vehicles built between approximately November 2, 2016 and January 22, 2017.

NOTE: This is a simplified summary of the affected VIN list. Refer to the VIN/Bulletin Tracker or Customer/Vehicle profile to determine applicability of this bulletin for a particular vehicle.

For feedback on the accuracy of this document, email ServiceBulletinFeedback@tesla.com.