



Tesla, Inc.
Service Bulletin

Replace Tow Hitch Label

SB-19-19-006
September 13,
2019

R1

Classification		Section/Group	Mobile Service
Campaign Bulletin		19 - Labels	Can Perform* *Where permitted
Model Year	Model	Country/Region	Version
2018 - 2019	Model 3	Europe, Middle East, Africa	All

The model(s) and model year(s) listed are a general approximation of the affected VIN list. Refer to the VIN/Bulletin Tracker or Customer/Vehicle profile to determine applicability of this bulletin for a particular vehicle.

Campaign Bulletin: This campaign bulletin addresses a known non-safety-related condition and provides recommended technical diagnosis and repair procedures. Apply this procedure to all vehicles in the affected VIN list.

This Service Document supersedes SB-19-19-006, dated 22-Aug-19. Each content change is marked by a vertical line in the left margin. Discard the previous version and replace it with this one.

Condition

Certain Model 3 vehicles were manufactured with an incorrect tow hitch label.

Correction

Inspect the vehicle for symptoms related to the condition. If symptoms are present, replace the tow hitch label.

Correction Description	Correction	Time
SB-19-19-006 Not Applicable	S011919006	0.00
Inspect Tow Hitch Label, Correct Tow Hitch Label Installed	S021919006	0.05
Inspect Tow Hitch Label, Replace Tow Hitch Label	S031919006	0.10

Part Number	Description	Quantity
Parts Required 1531382-00-A	Model 3 Tow Hitch Label	1

These part numbers were current at the time of publication. Use the revisions listed or later, unless otherwise specified in the [Parts Catalog](#).

Shop Supplies Clip prytool
Isopropyl alcohol (IPA) wipes
LED flashlight

Procedure

1. Raise the vehicle to a comfortable working height.
2. Use a clip prytool to remove the clips (x2) that attach the tow hitch cover to the rear fascia (Figure 1).



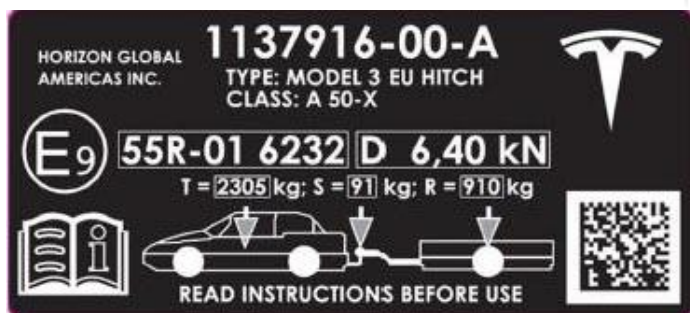
Figure 1


3. Remove the tow hitch cover from the rear fascia (Figure 2).




Figure 2

4. With a flashlight, inspect the tow hitch label located on the RH side of the trailer hitch on the bumper beam assembly:
 - If the incorrect label is installed (Figure 3), continue with this procedure.
 - If the correct label is installed (Figure 4), discontinue this procedure and reinstall the tow hitch cover and clips.



 Figure 3 – Incorrect label



 Figure 4 – Correct label

5. Remove the incorrect tow hitch label from the bumper beam assembly. Lift one corner of the label to begin removal.
6. Use an IPA wipe to clean the surface of the bumper beam (Figure 5). Allow the area to dry for at least 1 minute.



Figure 5

7. Install a new tow hitch label onto the bumper beam (Figure 6).

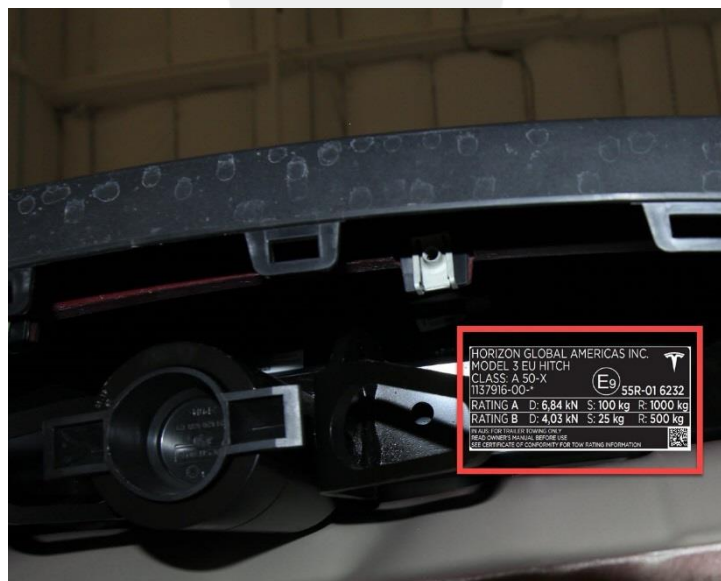


Figure 6

8. Position the tow hitch cover into place, and then reinstall the clips (x2) that attach the tow hitch cover to the rear fascia.