 Tesla, Inc. Service Bulletin		<i>Reseal Front Panels Due To Water Leak</i>	
SB-22-10-003 May 2, 2022			
Classification		Section/Group	Mobile Service
Repair Bulletin		10 - Body	Cannot Perform
Model Year	Model	Country/Region	Version
2012 - 2020	Model S	All	All
<small>The model(s) and model year(s) listed are a general approximation of the affected VIN list. Refer to the VIN/Bulletin Tracker or Customer/Vehicle profile to determine applicability of this bulletin for a particular vehicle.</small>			

Repair Bulletin: This repair bulletin provides instructions on addressing a noted condition or possible customer concern regarding the operation of Tesla vehicles. These instructions should only be performed by trained professionals.

Condition

On some Model S vehicles, the LH and/or RH shotgun panel and A pillar area might have water ingress issues that cause wet front footwell carpets and electrical issues, such as intermittent or permanent loss of door functions.

Correction

Upon customer complaint of damp or wet footwell carpets, inspect the vehicle for water ingress in the shotgun panel and A pillar area. Apply sealant to all areas and joints where water ingress is possible.

Correction Description	Correction	Time
SB-22-10-003 Not Applicable	S012210003	0.00
Reseal Front Panel Due To Water Leak (one side)	S022210003	2.70
Reseal Front Panels Due To Water Leak (both sides)	S032210003	4.50

	Part Number	Description	Quantity
Parts Required	1031124-01-A	SEALANT, MS 660, 310 ML	1
	or 1756021-00-A	SUPER RTV SILICONE	1
These part numbers were current at the time of publication. Use the revisions listed or later, unless otherwise specified in the Parts Catalog .			
If the required part is unavailable, it can be replaced by a locally available product that is designed or can be used as a body sealant.			
Special Tools	1080593-00-A	Caulk and Adhesive Gun	
	1100076-00-A	Video Borescope	
Shop Supplies	IPA wipes		

Removal

1. Check for moisture in the footwell areas to determine which side of the vehicle (LH, RH or both) needs repair.
2. Remove the hood, with hinges attached to the hood (refer to Service Manual procedure [10100301](#)).
3. Remove the front fascia assembly (refer to Service Manual procedure [1010901](#)).
4. Remove the LH and/or RH front fender assemblies (refer to Service Manual procedure [10103002](#)).
5. For LH repair only: remove the windshield washer reservoir (refer to Service Manual procedure [17501102](#)).
6. Remove the butyl patches on the LH and/or RH upper end of the shotgun cover (Figure 1).



Figure 1 – LH shown; RH similar

Rework

This procedure applies to LH and RH side.

1. Inspect all panel joints in and around the shotgun and A-pillar area for gaps, splits and cracks (Figure 2).



Figure 2

2. Inspect the lower body joints in the bulkhead area for gaps or cracks in the sealant (Figure 3 and 4).




Figure 3 – LH side



Figure 4 – RH side

3. Clean all areas where new sealant must be applied with IPA wipes.

 **NOTE:** Allow 1 minute to dry.

4. Check that the butyl patches at the top corner of the bulkhead (under the windshield and behind the foam) are all sealing as intended. If necessary, clean the area with IPA wipes, allow 1 minute to dry, and then apply new patches (Figure 5).



Figure 5

5. Prepare the caulking gun and the sealant. Make sure the sealant nozzle has an opening of 2 mm wide.

6. Apply sealant to the joint between the shotgun upper side, the front shock tower and the shotgun outer side (Figure 6).



Figure 6

7. Apply sealant to the vertical joint between the A-pillar outer side and the hinge pillar assembly (Figure 7).



Figure 7

8. Apply sealant to the body joints between the outer shotgun panel and along the front edge of the hinge pillar assembly (Figure 7).

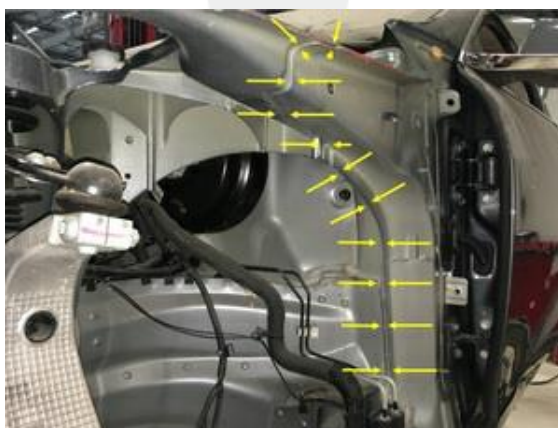


Figure 8

9. Apply sealant to the joints between the cowl side assembly, the side of the bulkhead and the front rail outer extension (Figure 8).

⚠ CAUTION: Do not seal the drain hole (circled) on the outer shotgun panel.

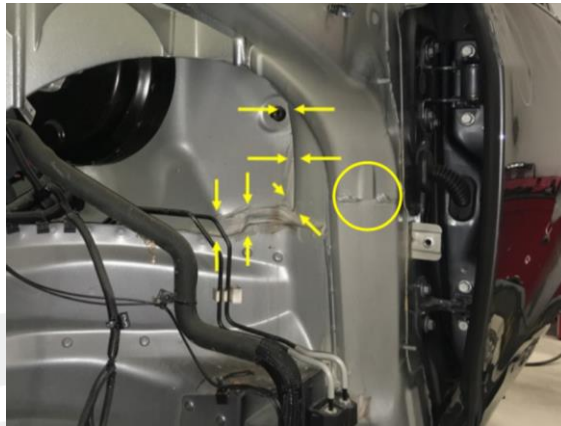


Figure 9

10. Apply sealant to the body joint between the inner edge of the upper shotgun panel and the front shock tower (Figure 9).

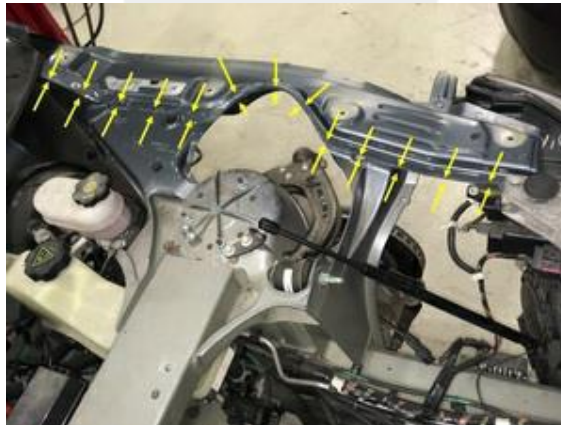


Figure 10

11. Apply sealant to the inside corners of the front opening of the A-Pillar (Figure 10).



Figure 11

12. Apply sealant to all panel joints in the area between the cowl side and the upper shotgun panel (Figure 11).

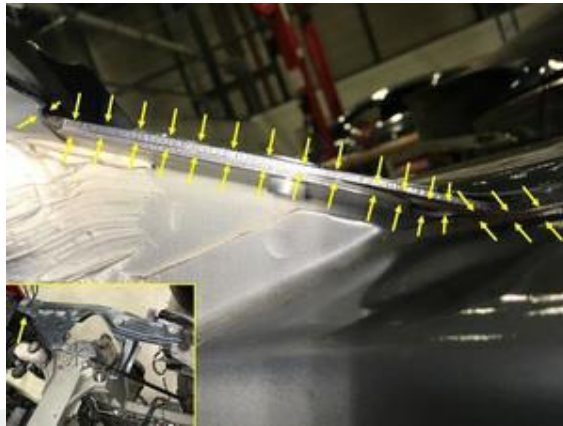


Figure 12

13. Apply sealant to the vertical and horizontal body joints between the bulkhead and the extension panel (Figure 12).



Figure 13

14. Apply sealant to the joint under the hood hinge attachment point (Figure 13).

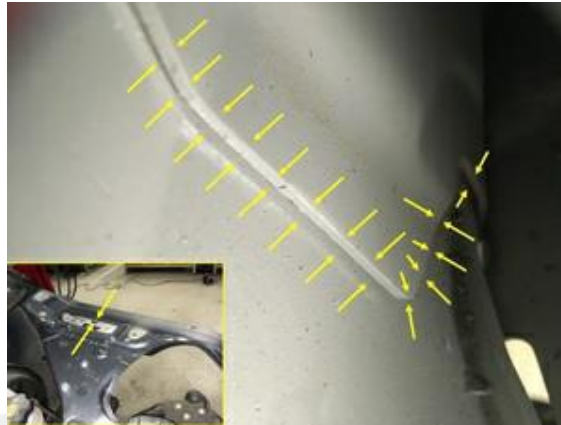


Figure 14

- a. Use sealant on a small brush through the hole in the upper shotgun panel. Use a borescope to view the joint through the hole in the outer shotgun panel (Figure 14).



Figure 15

- b. Switch the borescope to the hole in the upper shotgun panel and use the brush through the hole in the outer shotgun panel to make sure the entire joint is sealed (Figure 15).



Figure 16

15. Apply sealant to the front opening of the upper shotgun panel (Figure 16).



Figure 16

16. Apply sealant to the opening at the rear edge of the upper shotgun panel (Figure 17).



Figure 17

17. Use IPA wipes to clean up any excess sealant.

18. Allow 1 hour for all applied sealant to dry.

19. Spray bubbles on all newly sealed body panel joints and blow shop air to check for gaps in the sealant. Re-apply sealant if necessary.

Installation

Install all components that were removed for access.