

A. System Requirements

To use **VC1008 Interface Program**, you need the following hardware and software:

- An IBM PC or equivalent computer with Pentium 2 or higher processor and 800 x 600 pixel or better monitor.
- Microsoft Windows 98 or above.
- At least 64MB of RAM.
- At least 20MB free space in hard drive.
- Can access to a local or a network CD-ROM.
- A free USB port.
- A mouse or other pointing device supported by Windows.

B. Installing VC1008 Interface Program


To install **VC1008Interface Program**, please follow below procedure:

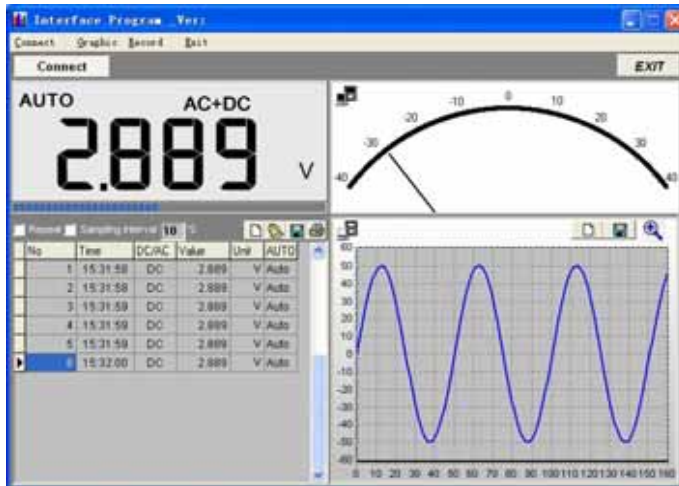
Before install the interface program, make sure that the computer is running the Window 98 or above operating system.

1. -Insert the provided CD-ROM into CD-ROM drive.
 -Double-click the My Computer icon from the Windows desktop.
 -Locate the CD-ROM drive from the window, double-click the drive letter to display the folder of VC1008.
 -Double-click VC1008 to display the contents of the folder.
 -Double-click the file '**VC1008 Setup.exe**'
2. Follow the on-screen installation instructions.
3. The installation program will create a **DMM Interface Program** folder.
 You will be prompted to select the kind of Program Folder you want to install; you should select "**VC1008 Interface Program**".

C. Getting Started with VC1008 Interface Program

To run the **VC1008 Interface Program**, please do the followings:

1. Insert the supplied USB interface cable into the slot at the back of the meter and properly connect the other end of the cable to the serial port of computer.
2. From the Windows Start menu, choose Programs >DMM Interface Program > VC1008
3. Connect the USB cable to the Meter then press “Connect”.
4. Press Connect from menu bar to start the connection, the icon  will be displayed. (see figure 1)



(figure 1)

D. Graphical Operations (see figure 2)

During the connection, you can select the following functions by clicking the corresponding icon:

Clear: To clear all the graphics records permanently.

Save: To save a file in BMP format. The default file name is C:\DATA1.BMP”.

Zoom In: To enlarge part of the graphic.

Scope Area: This area displays the measured signal wave (only when the Meter is under Scope mode).



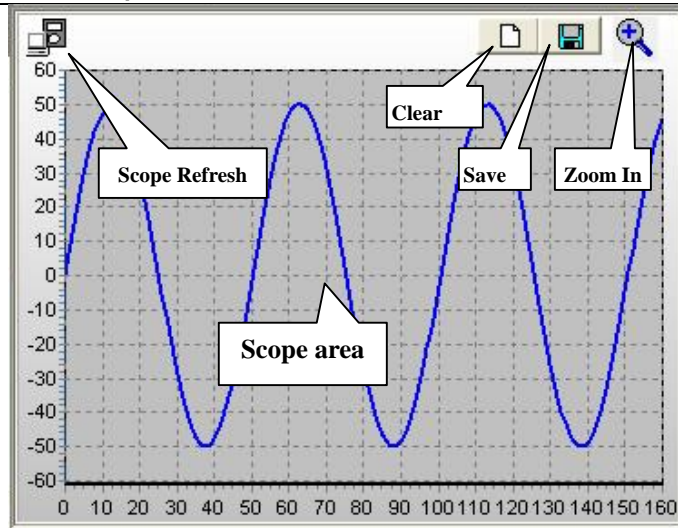
:



will be lighted if the last received data refresh scope. (The Meter is under Scope mode).



will be dim if there last received data does not refresh scope. (The Meter is under DMM mode)



(figure 2)

E. Data Recording Operations (see figure 3)

During the connection, you can select the following functions by clicking the corresponding icon:

Repeat: Click the box to keep the repeat record, or unclick the box to ignore the repeat record.

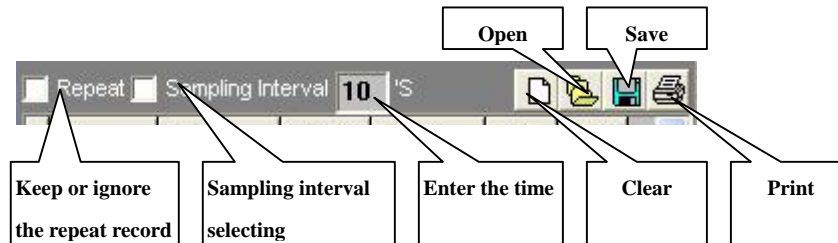
Sampling Interval: Click to enable sampling interval function, or unclick to disable the function
Enter the sampling interval time, the unit is second.

Clear: To clear all the records permanently.

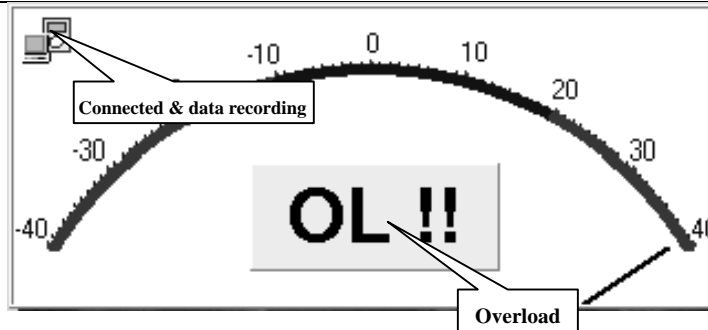
Open: Open the stored record (only in .DB format).

Save: To save all the record.

Print: Print the data record.



(figure 3)



(figure 4)

Remarks:

1. Before you re-install the software, please remove the installed program as follows:
My Computer > Control Panel > Add/Remove Programs
2. If abnormal digits or symbols were found, please remove font "UNIT-A2""UNIT-A3" and then install new font set from "FONT" directory on the provided CD-ROM.
3. No special notice or free replacement will be provided when update version is issued.

****END****

* This operating manual is subject to change without notice. *