

Corrigenda

Dissociation of Tris(triphenylphosphine)chlororhodium(I) in Solution

BY HIROMICI ARAI and JACK HALPERN

Chem. Comm., 1971, 1571.

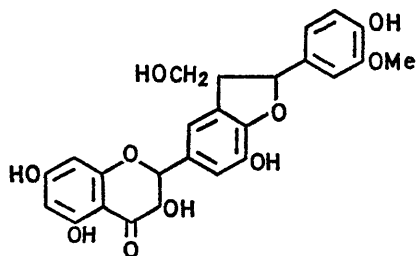
The first sentence of the second paragraph on p. 1572 should read: Fitting the spectral data to equation (2), demonstrated by Figure 2, yielded the value $K = (1.4 \pm 0.4) \times 10^{-4} \text{M}$, . . .

Structure of Silybin: Synthetic Studies

By R. HÄNSEL, J. SCHULZ, and A. PELTER

J.C.S. Chem. Comm., 1972, 195.

On p. 196, l.h. column, structure (VII) should be:



(VII)