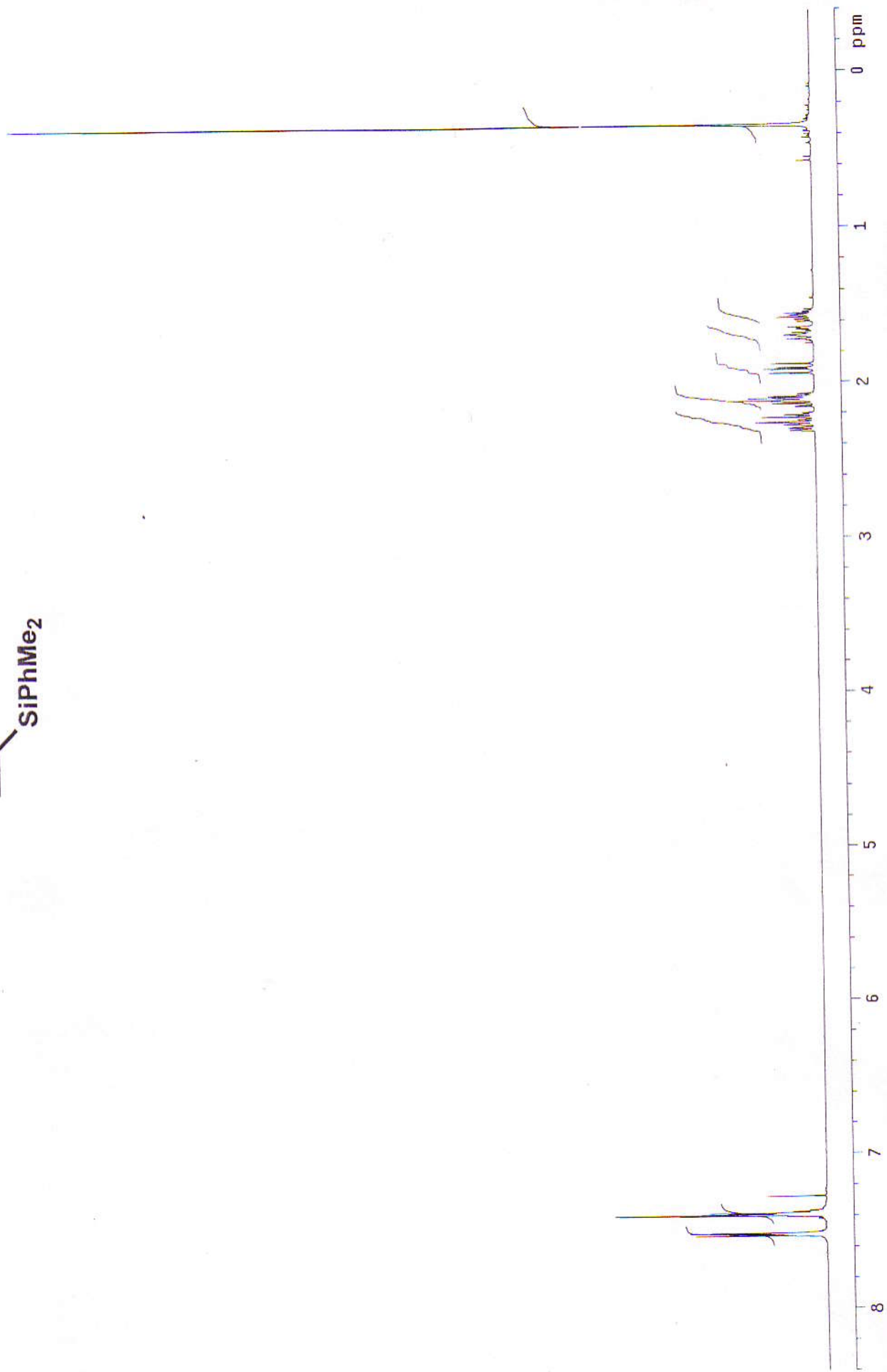
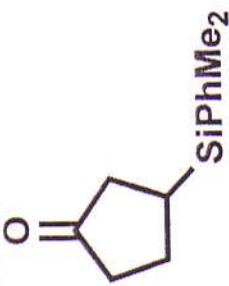
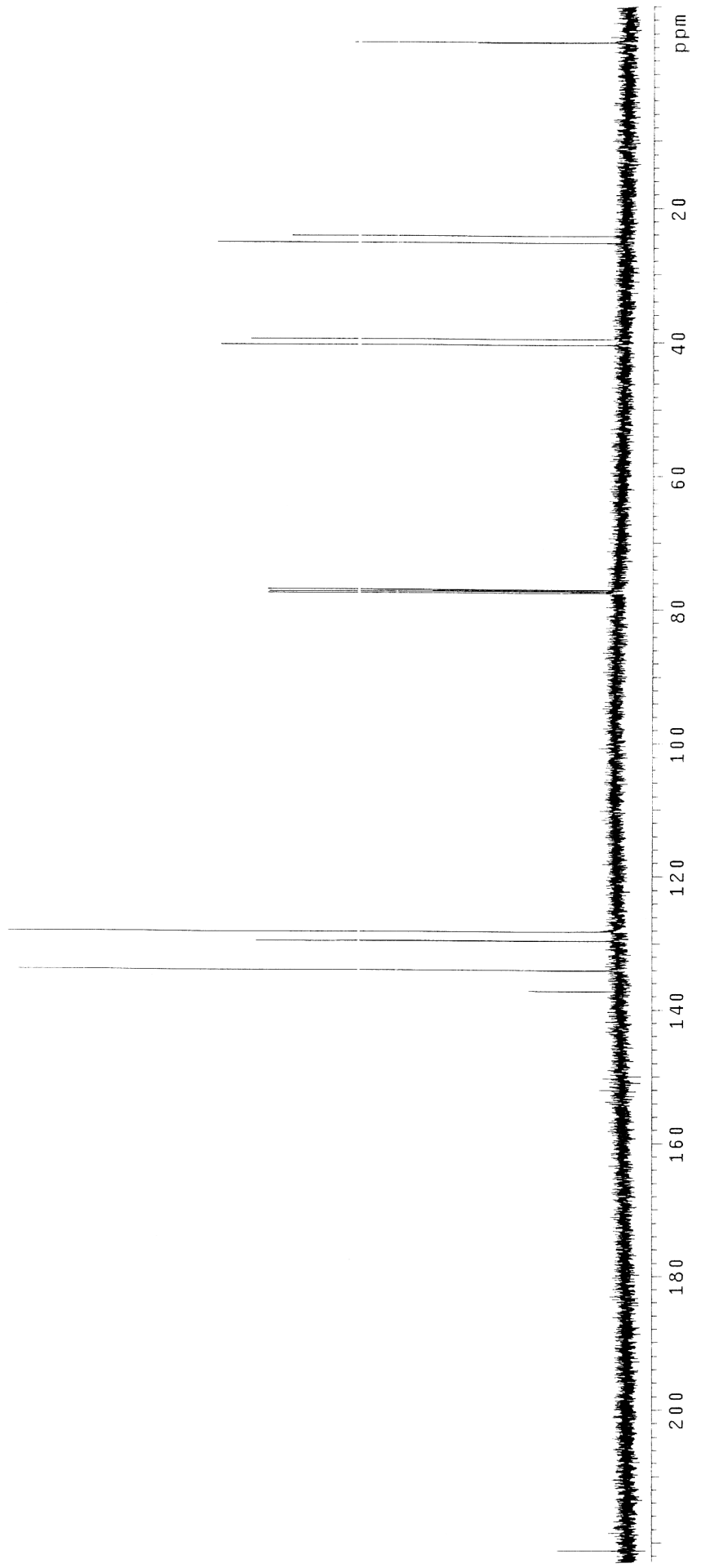
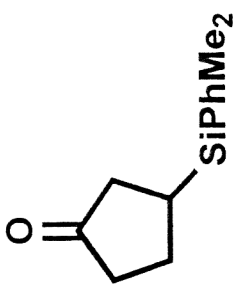


Typical procedure: Me₂PhSiLi (1.0M in THF, 1.03 mmol) was added under argon to a slurry of DMS purified CuI (1.48 mmol) in freshly distilled THF (17 mL) at -78 °C. After 30 min, neat ethyl crotonate (0.493-0.950 mmol) was added at -78 °C. The temperature of the reaction was slowly increased toward 0 °C over an 8 h period (~10 °C/h). Aqueous NH₄Cl/NH₃ (2-3 mL) was subsequently added at 0 °C and the resulting heterogeneous mixture was stirred until the aqueous phase turned deep blue. The organic layer was separated and the aqueous layer washed with ether (2 × 10 mL). Combined organic layers were dried with magnesium sulfate and the solvent removed under reduced pressure. The crude product was next purified using flash chromatography (5% diethyl ether in pentane, R_f ~ 0.4) to give 95% yield of the pure β-silylated ester. The product was subsequently characterized using NMR (¹H and ¹³C), MS and IR spectroscopy, please see next pages of the Supporting Information.

51.

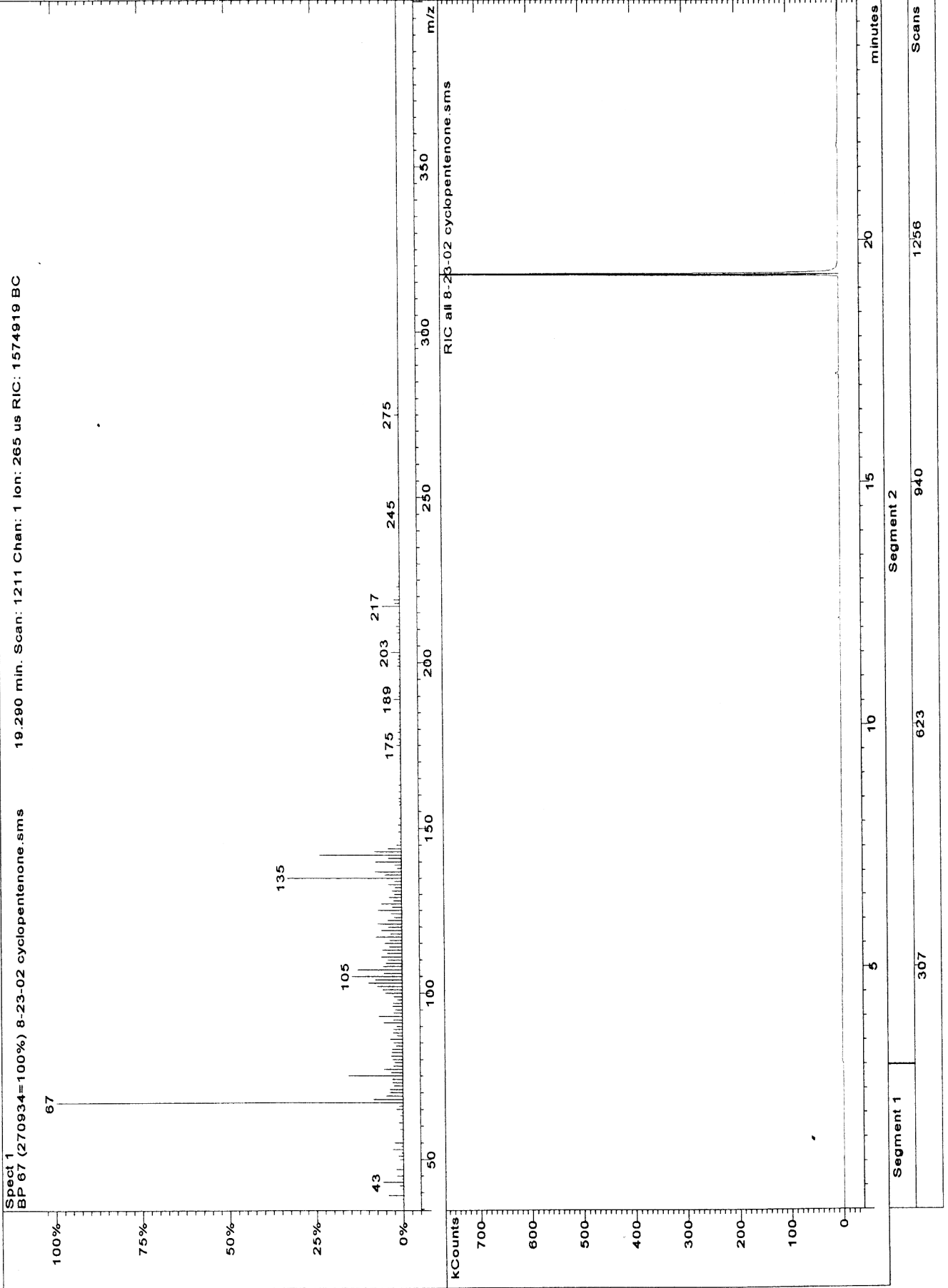
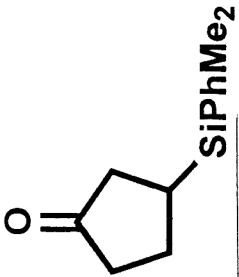


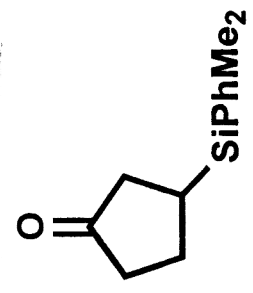
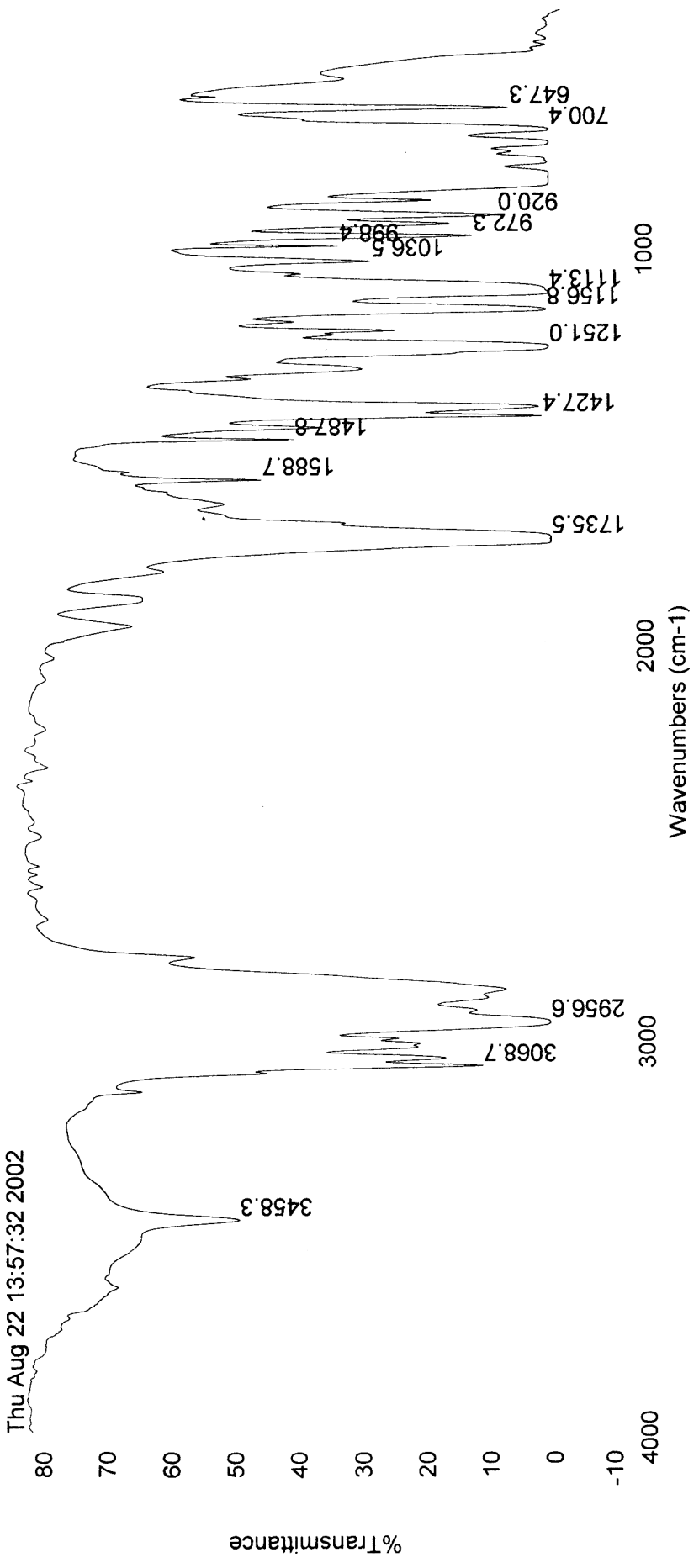


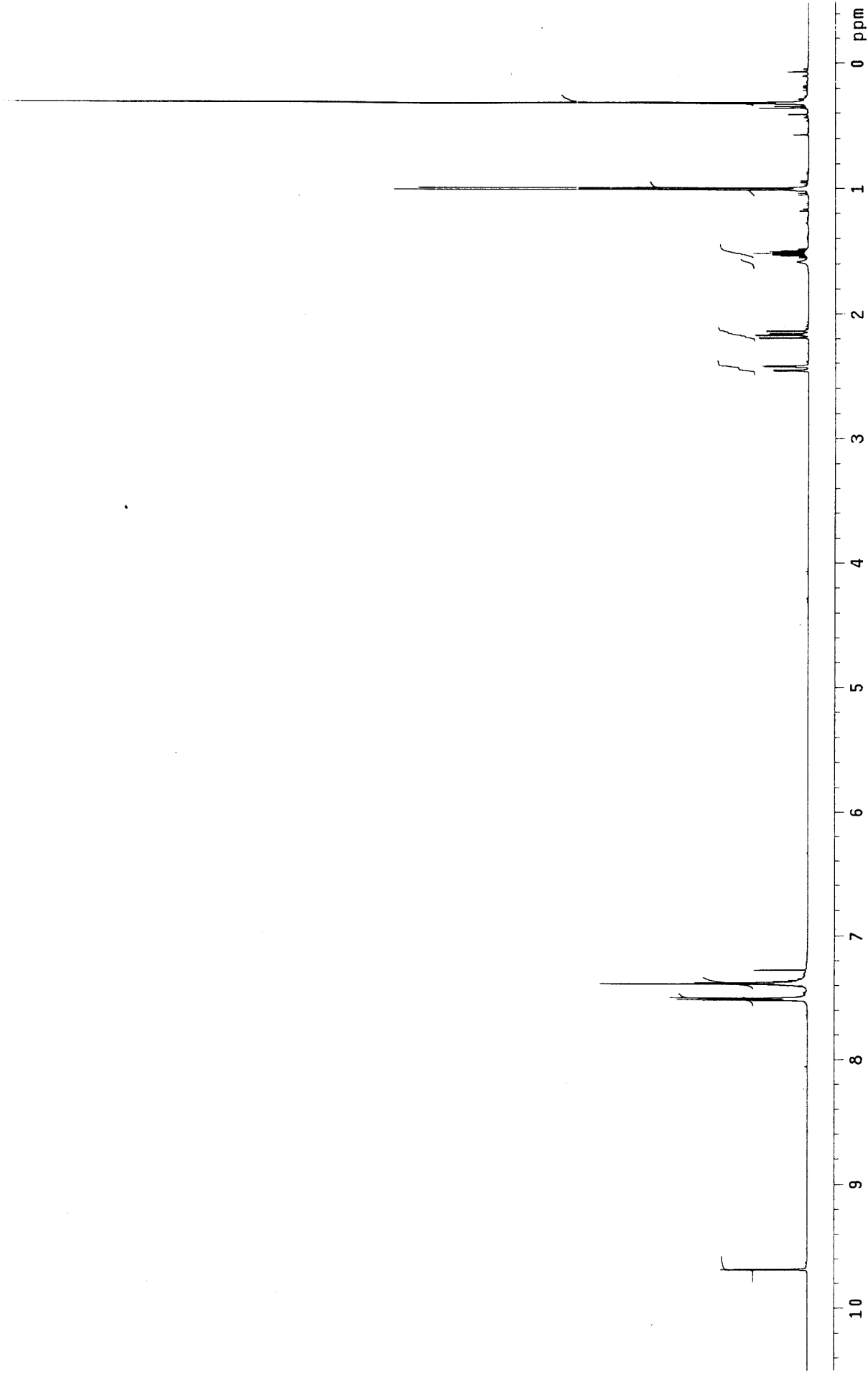
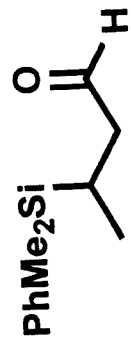
Chromatogram Plot

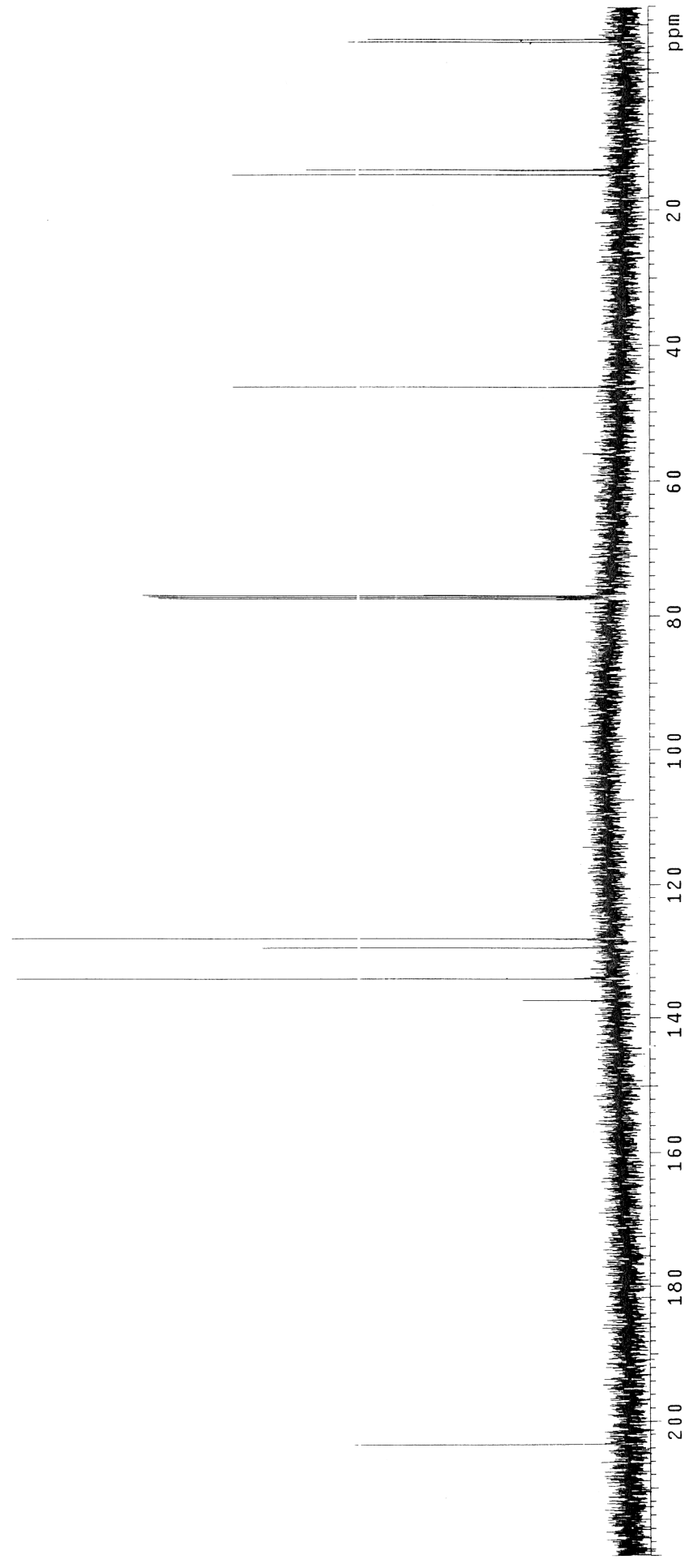
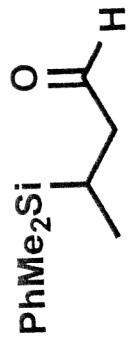
File: c:\saturnws\data\sam\8-23-02 cyclopentenone
Sample: cyclopentenone
Scan Range: 1 - 1569 Time Range: 0.00 - 24.97

Operator: sang
Date: 8/23/02 2:39 PM

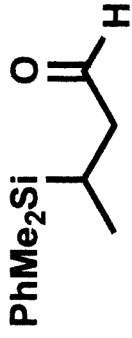






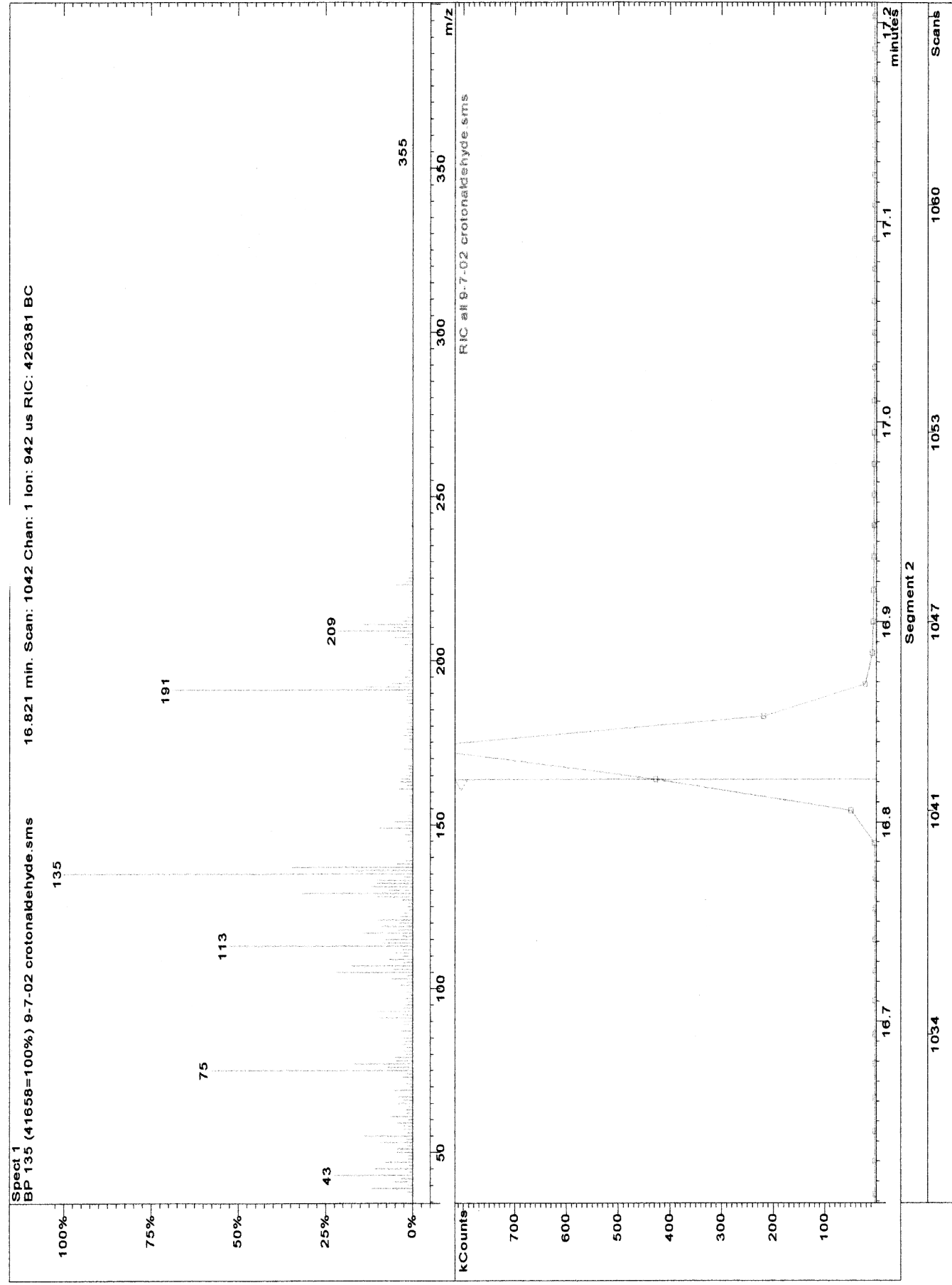


Chromatogram Plot

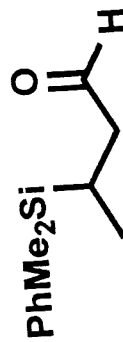
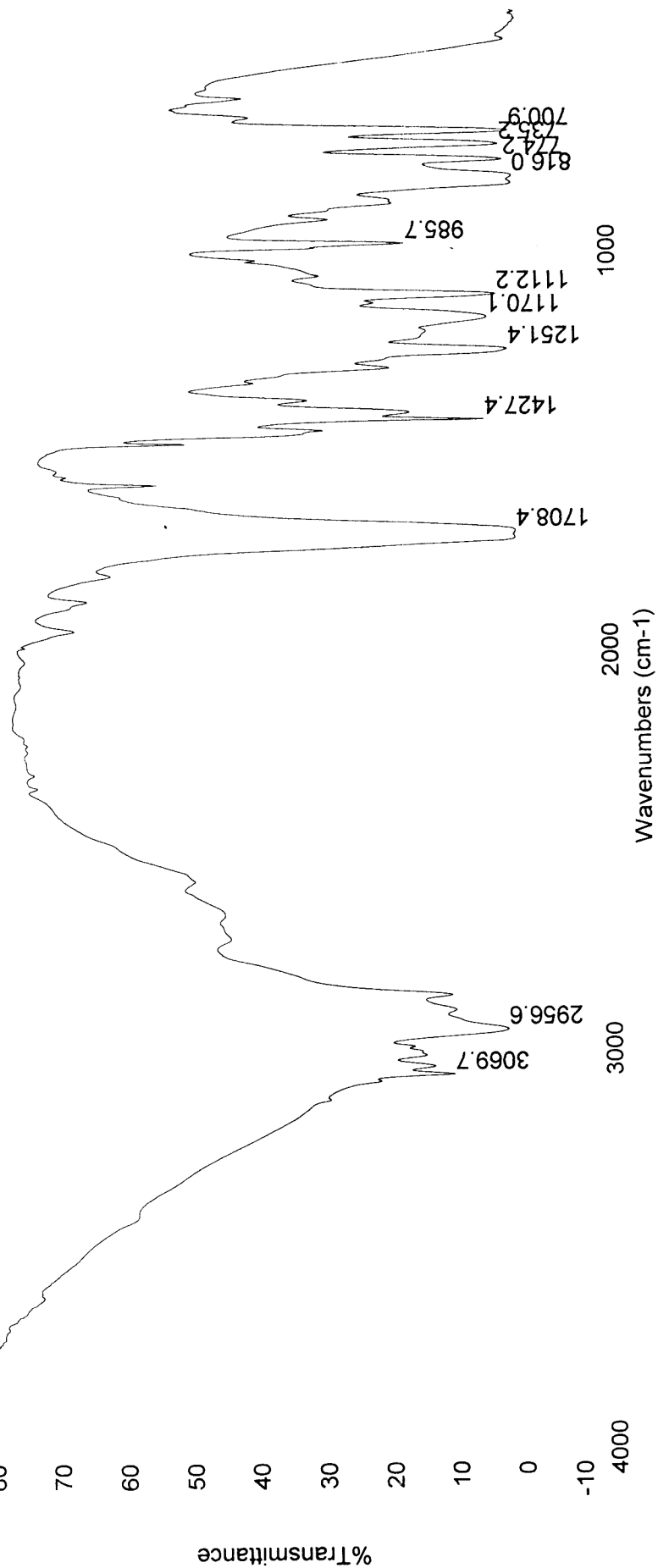


File: c:\saturnws\data\sam\9-7-02 crotonaldehyde.s
 Sample: crotonaldehyde
 Scan Range: 1 - 1552 Time Range: 0.00 - 24.97 m

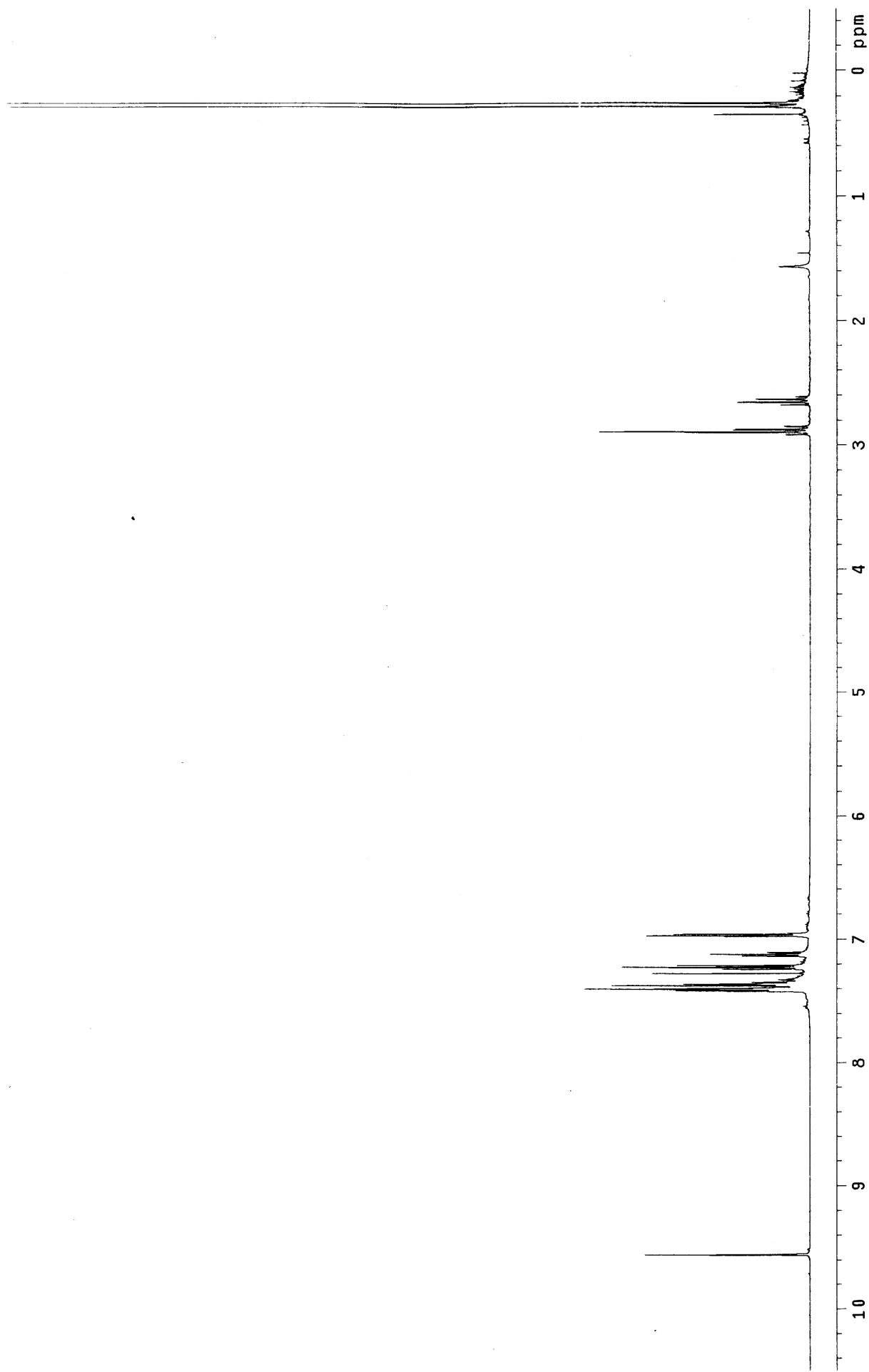
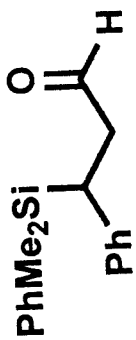
Operator: sang
 Date: 9/7/02 12:10 PM

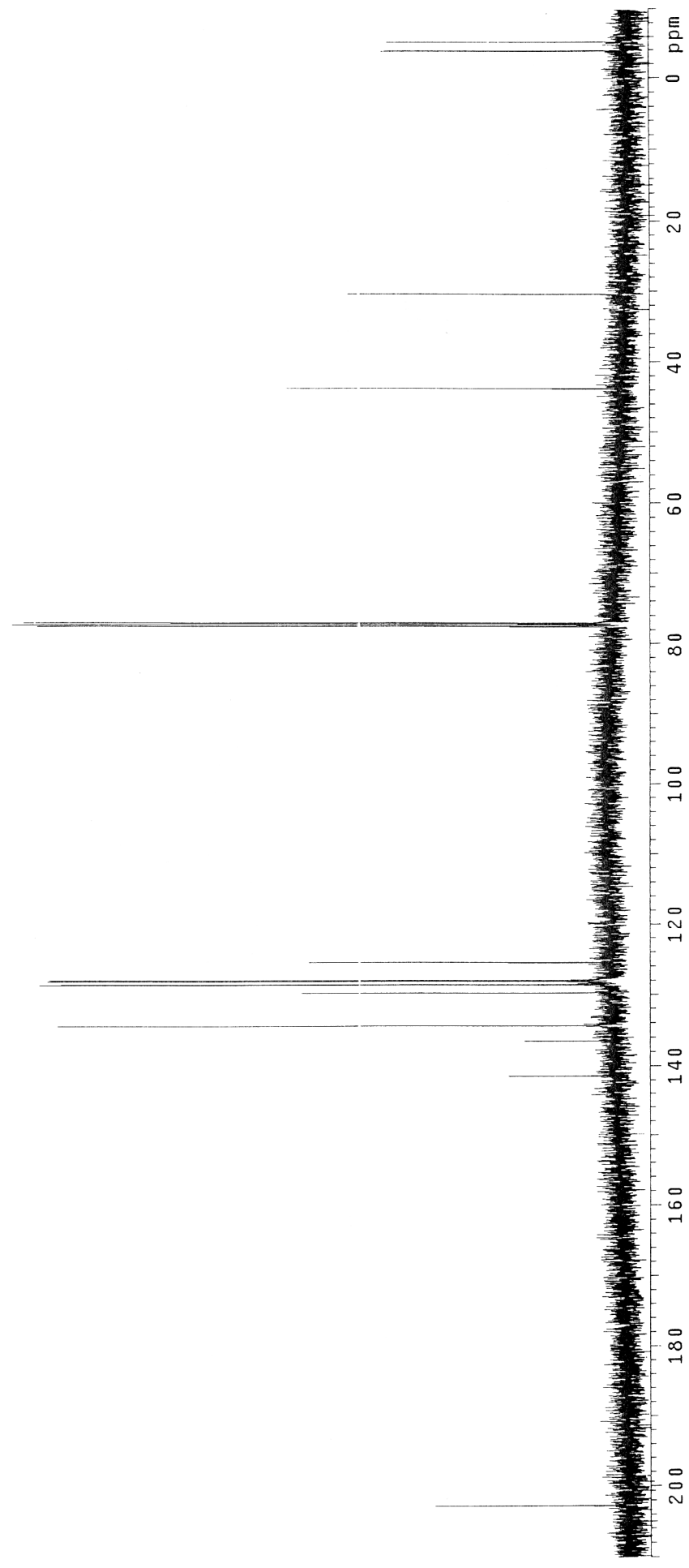
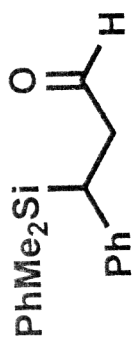


Thu Aug 22 16:51:23 2002

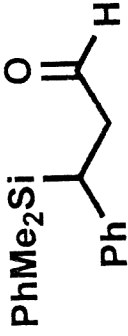


59



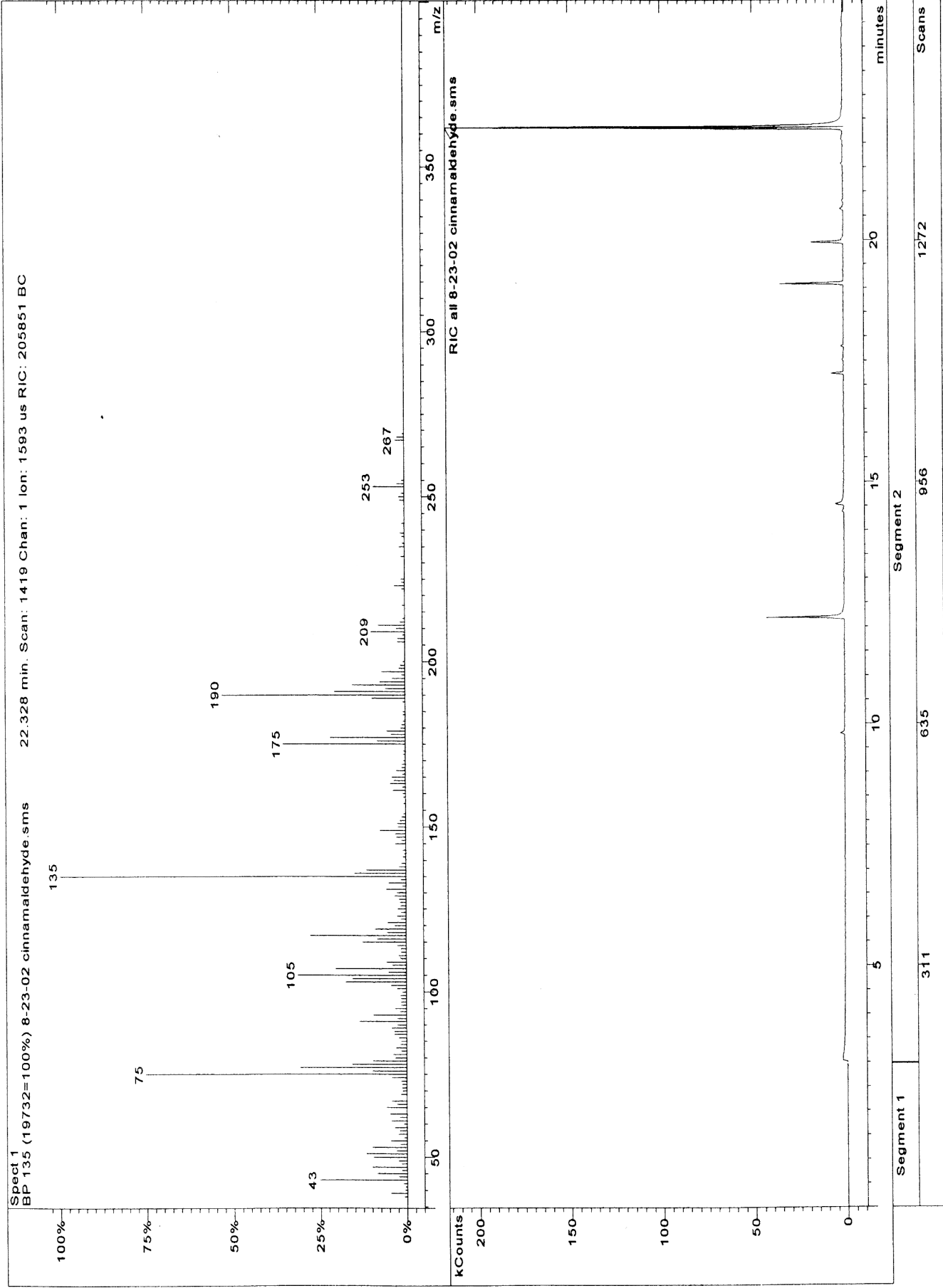


Chromatogram Plot

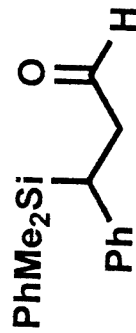
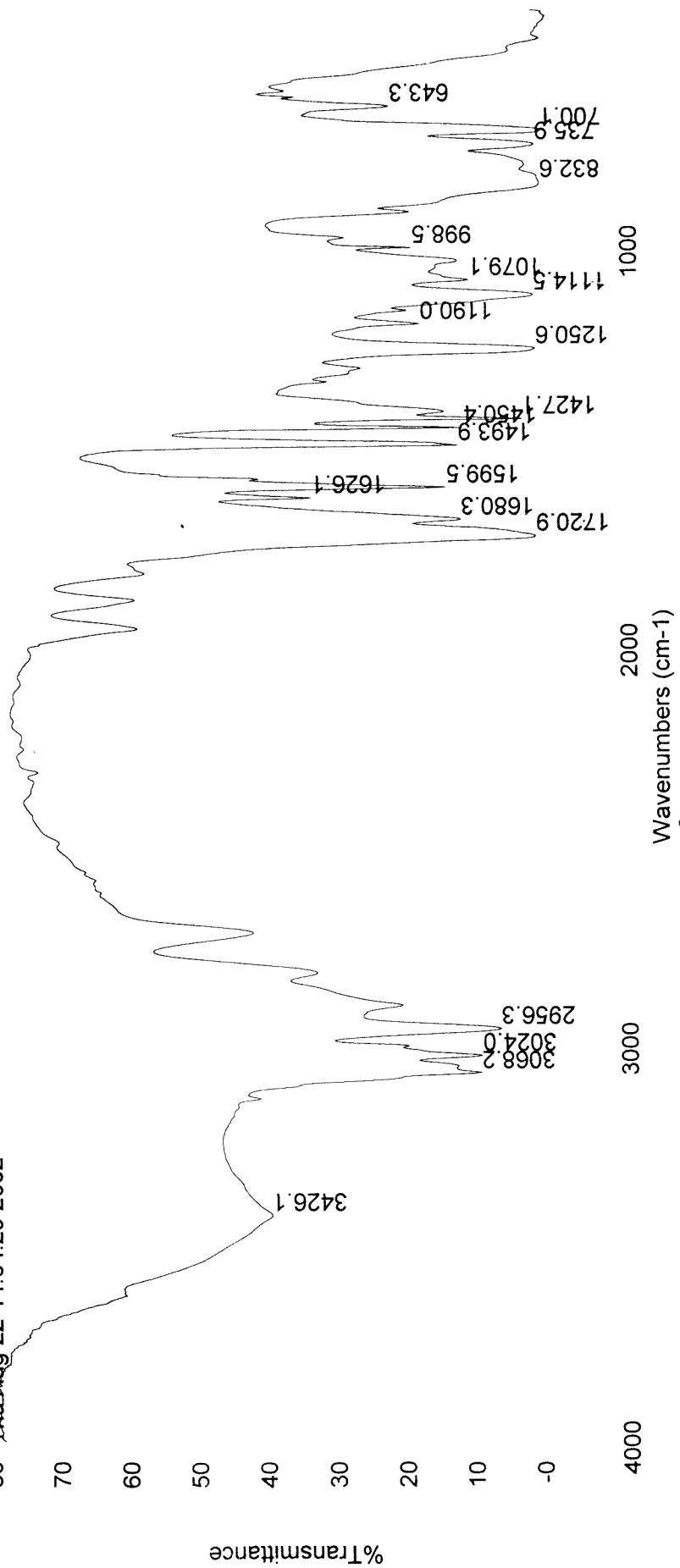


File: c:\saturaws\data\sam\8-23-02 cinnamalide
 Sample: cinnamaldehyde
 Scan Range: 1 - 1585 Time Range: 0.00 - 24.97 min.

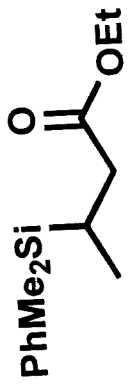
Operator: sang
 Date: 8/23/02 3:49 PM



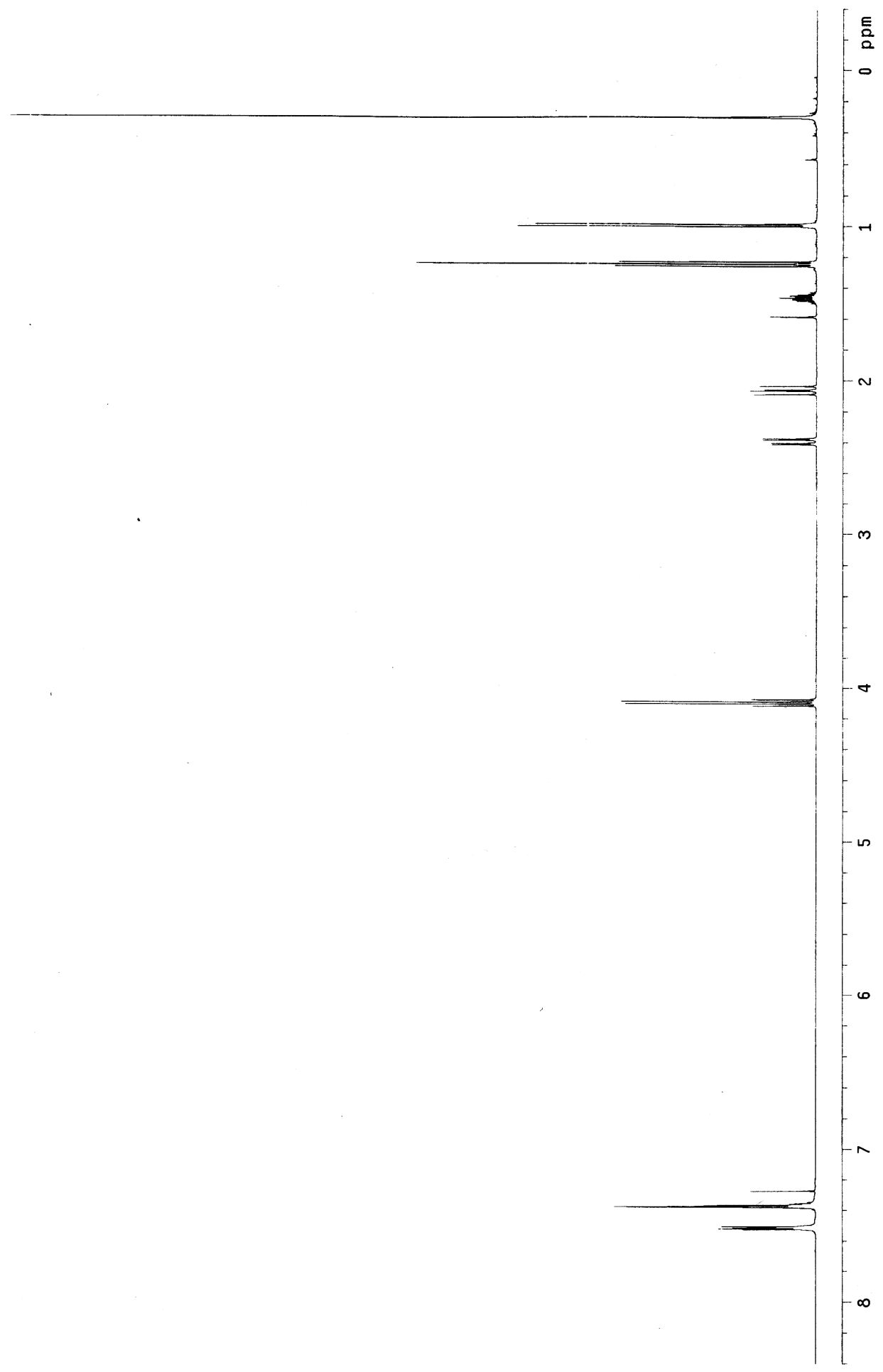
80 Thu Aug 22 14:04:29 2002



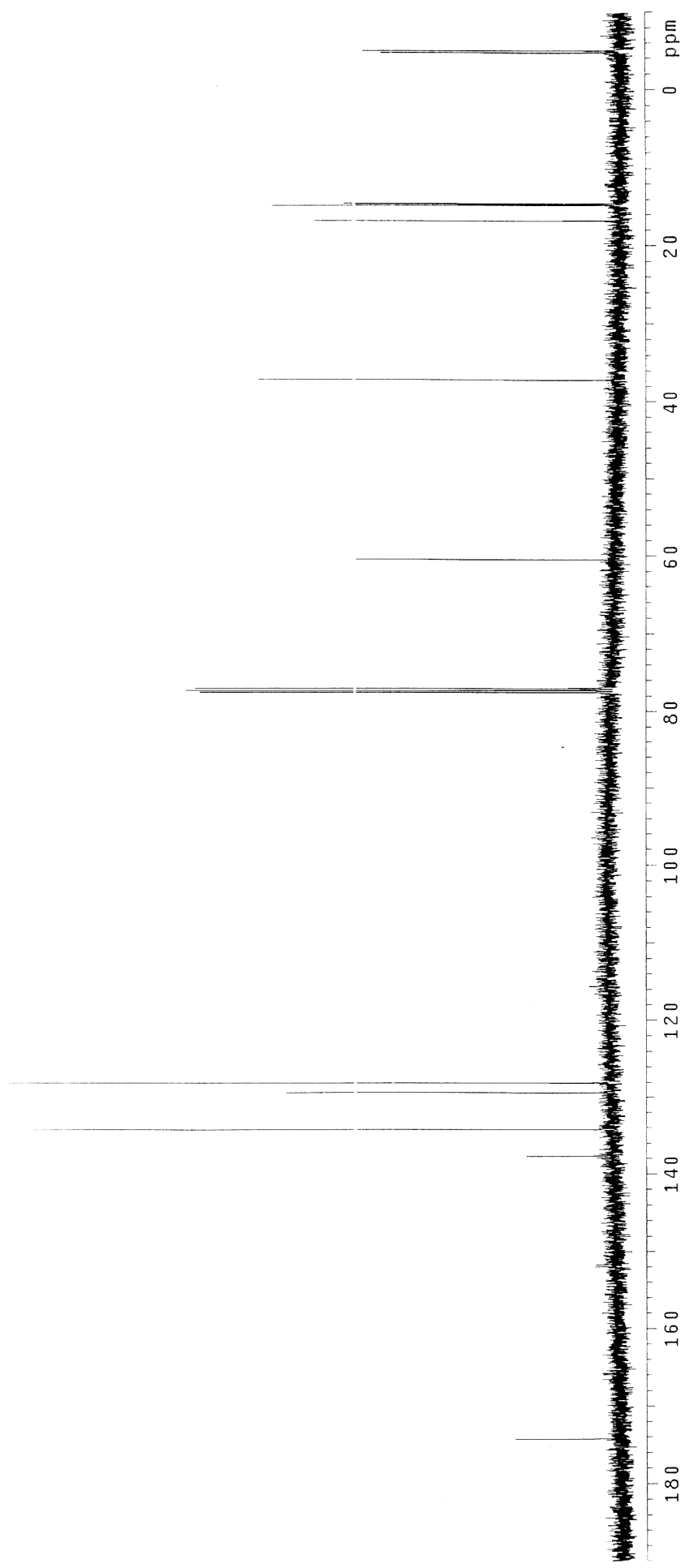
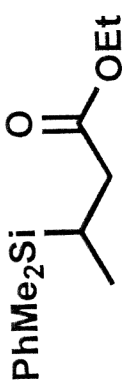
Wavenumbers (cm-1)

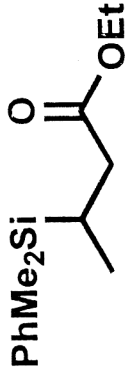


S13



S 14





Chromatogram Plot

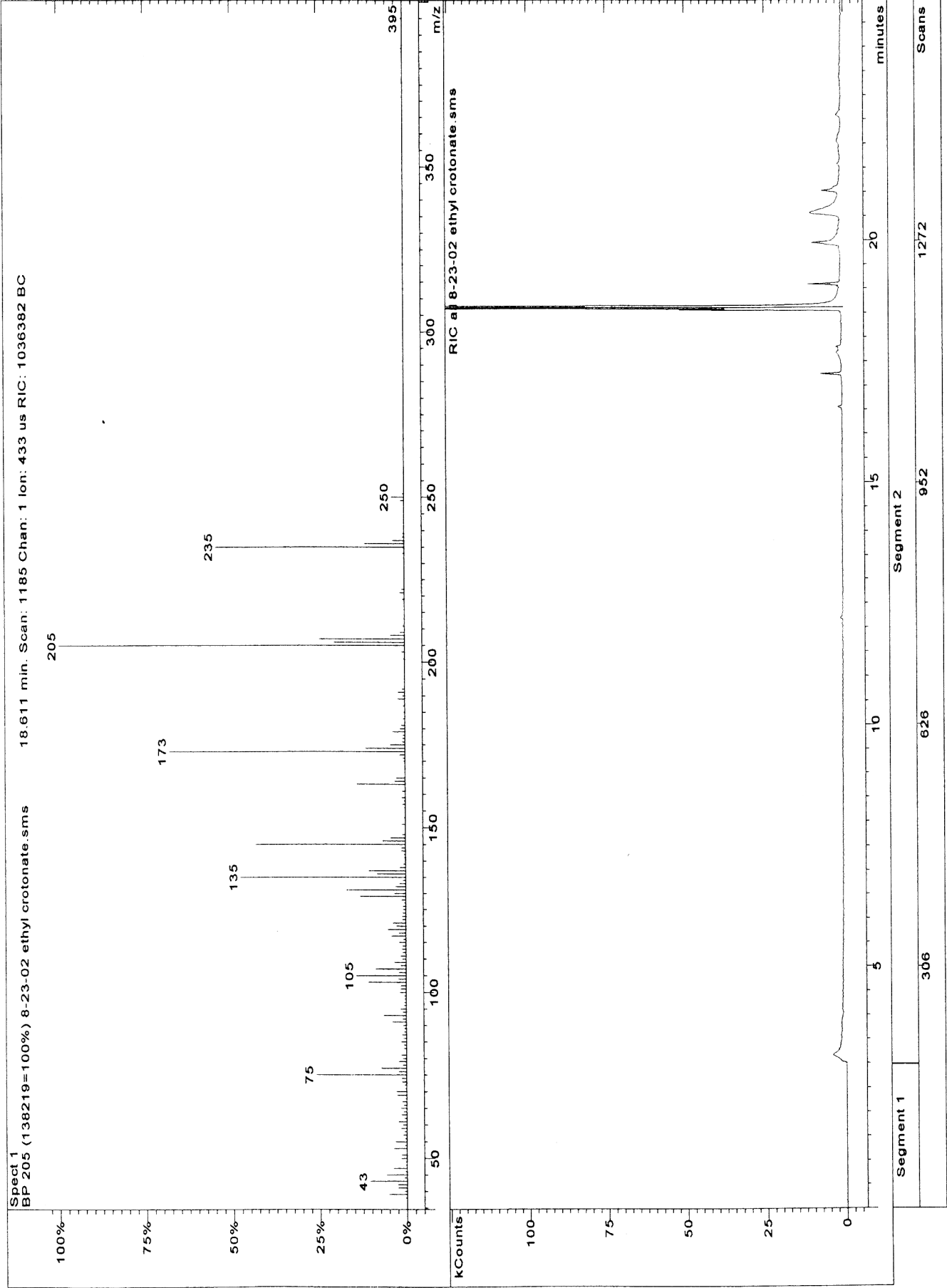
File: c:\saturday\data\sam\8-23-02 ethyl croto

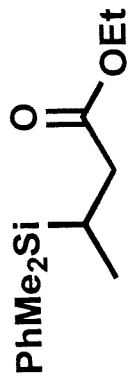
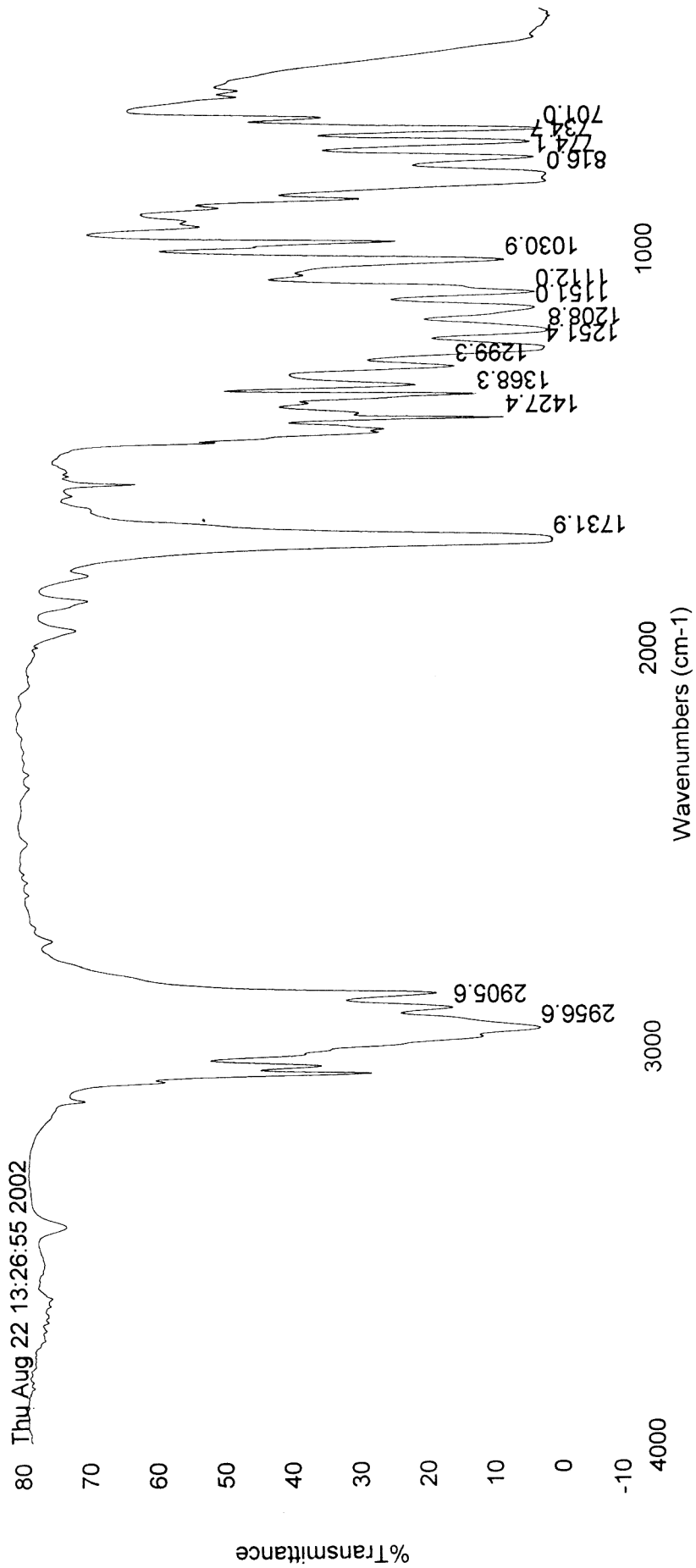
Sample: ethyl crotonate

Scan Range: 1 - 1586 Time Range: 0.00 - 24.98 min.

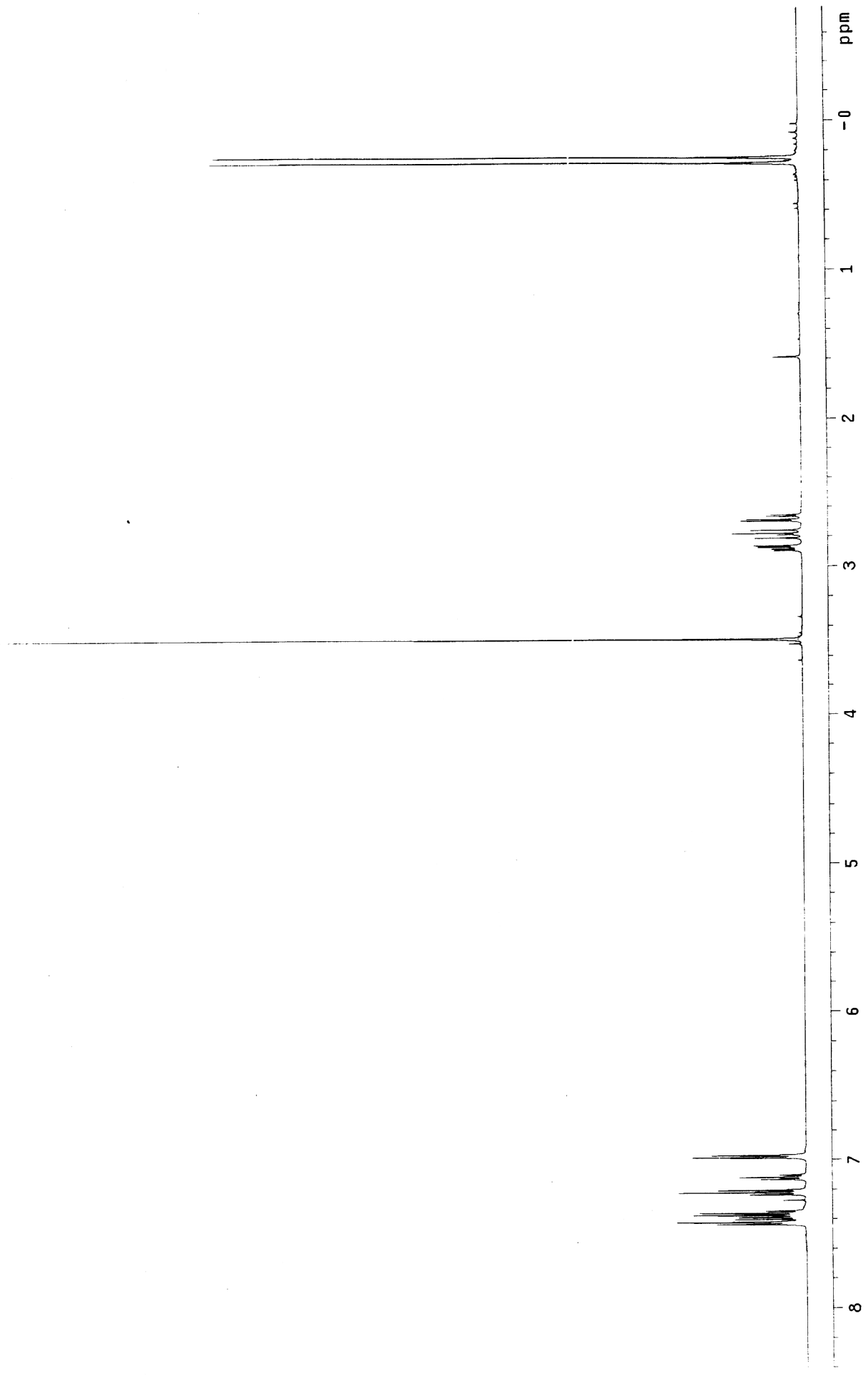
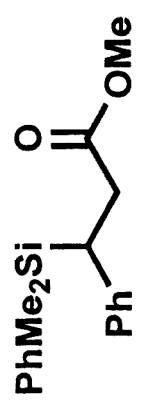
Operator: sang

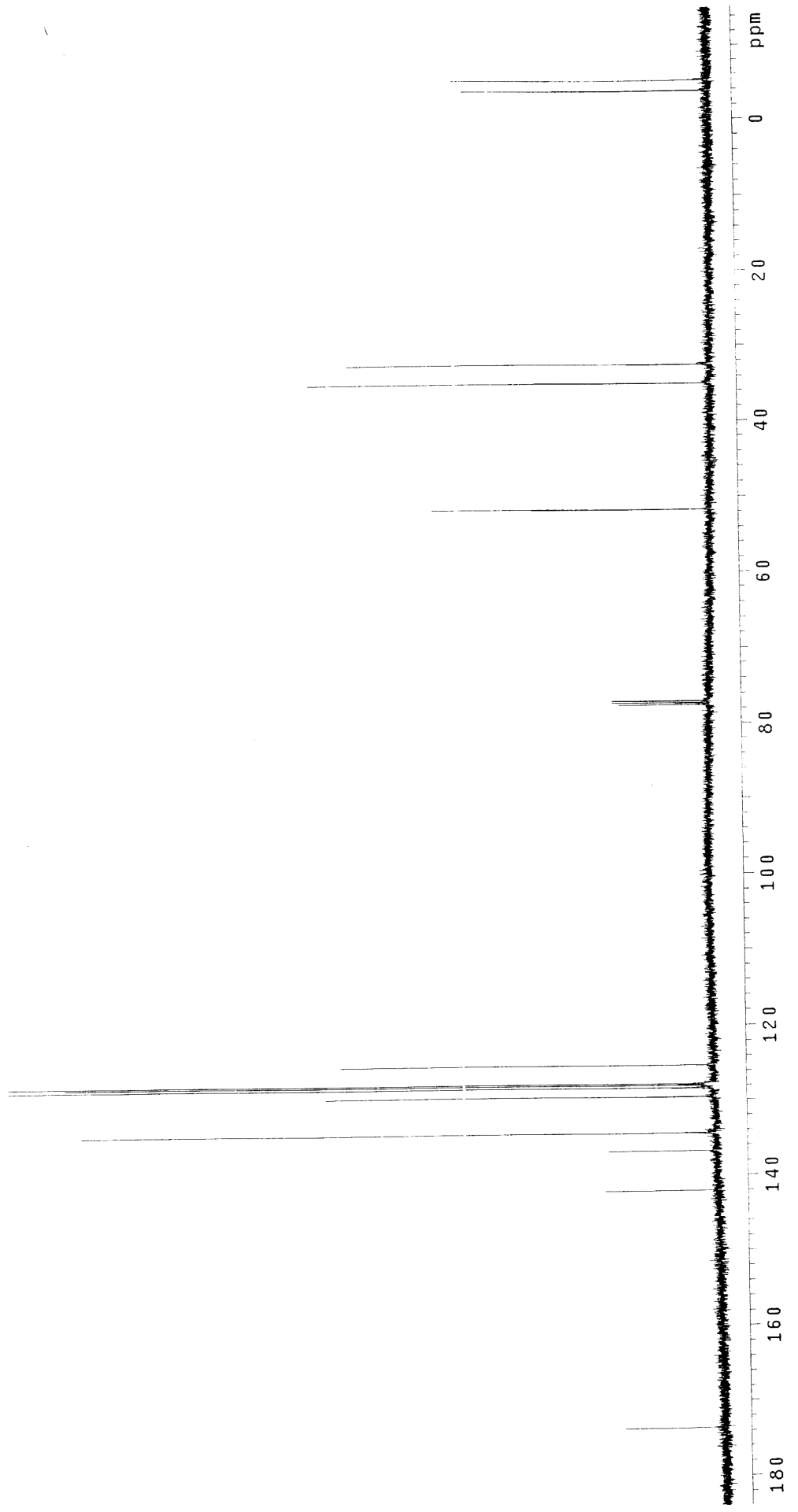
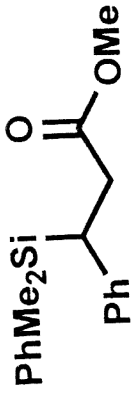
Date: 8/23/02 2:04 PM





S17





Print Date: 23 Aug 2002 12:02:26

S19

Chromatogram Plot

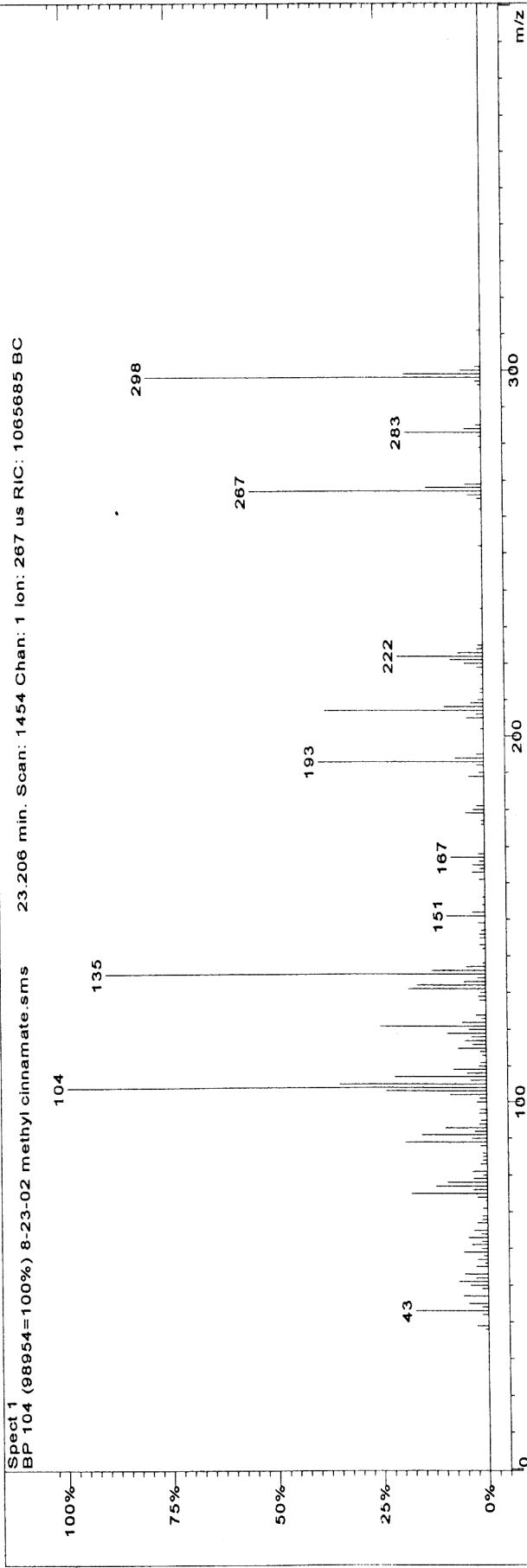
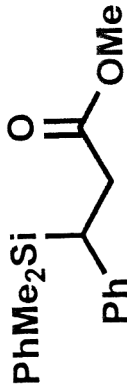
File: c:\saturnews\data\sam\8-23-02 methyl

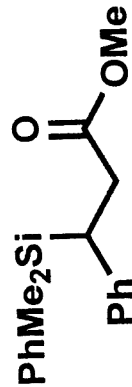
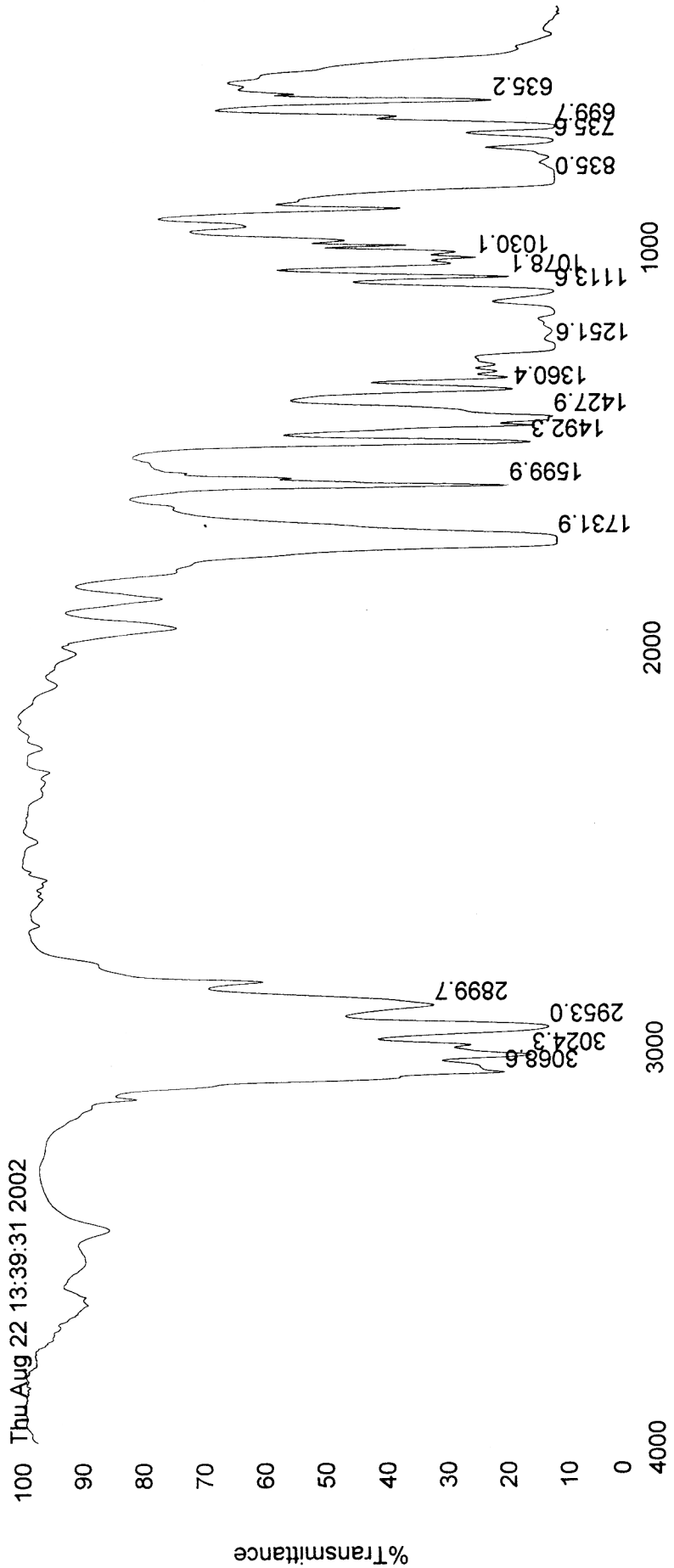
Sample: Default Sample

Scan Range: 1 - 1565 Time Range: 0.00 - 24.97 min.

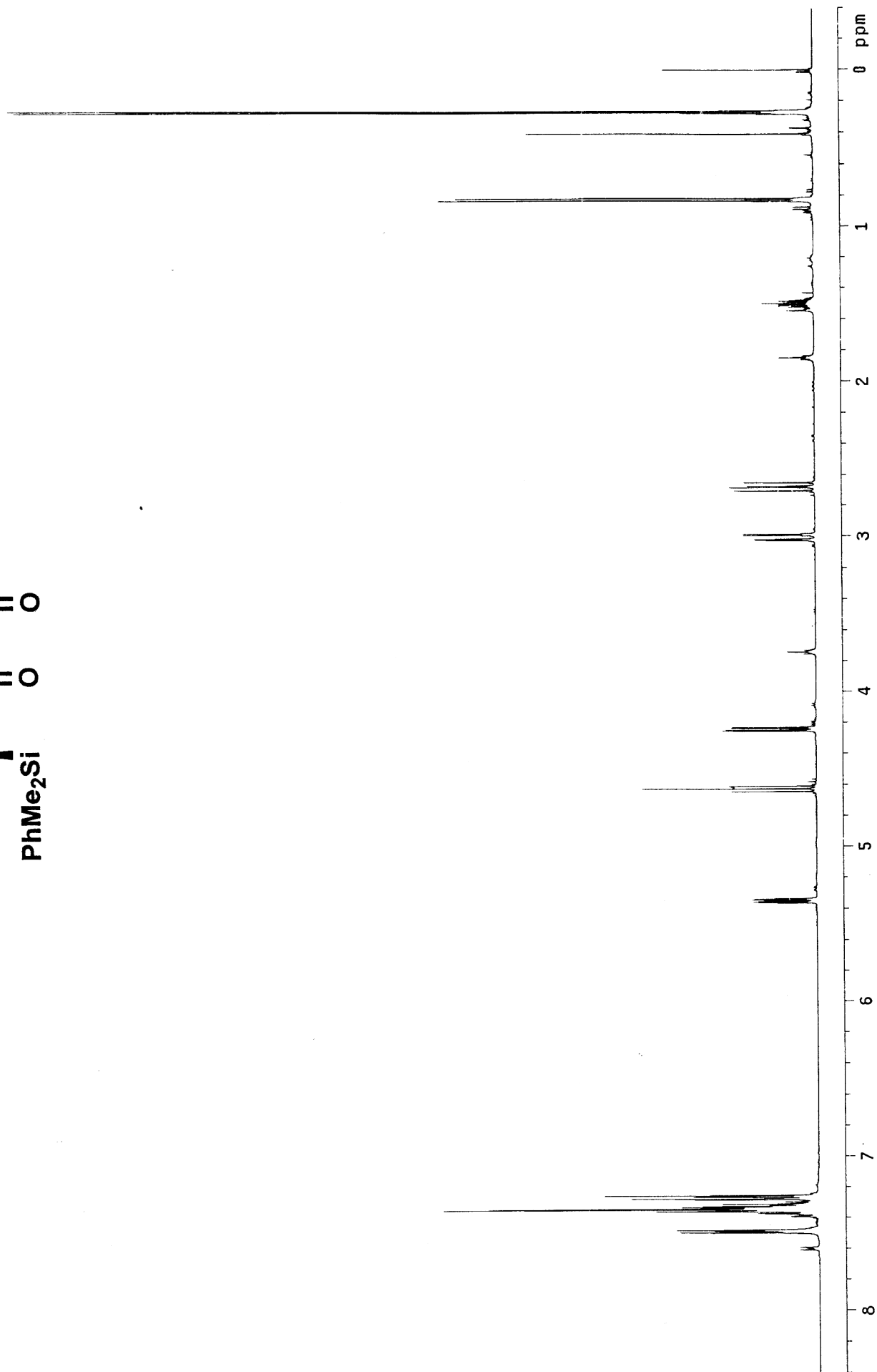
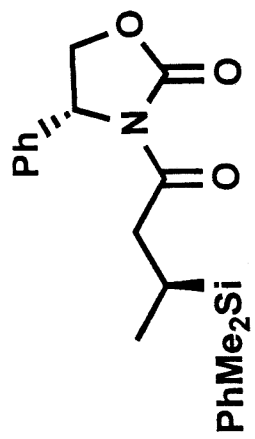
Operator: sang

Date: 8/23/02 11:29 AM

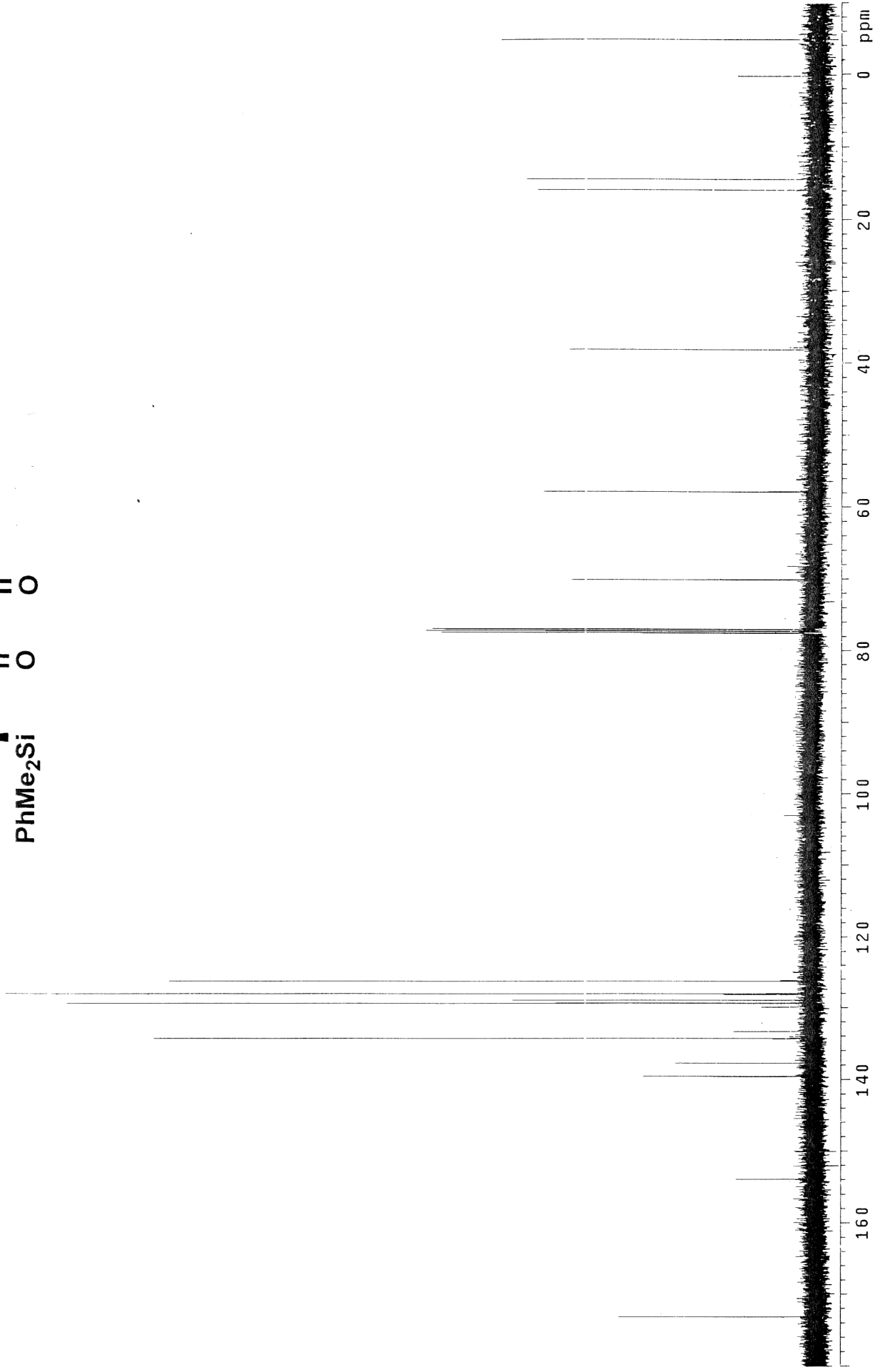
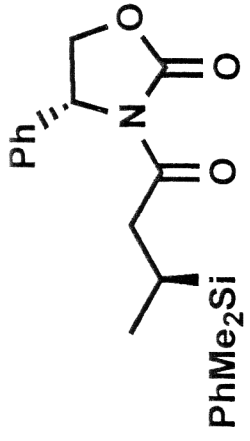




S21



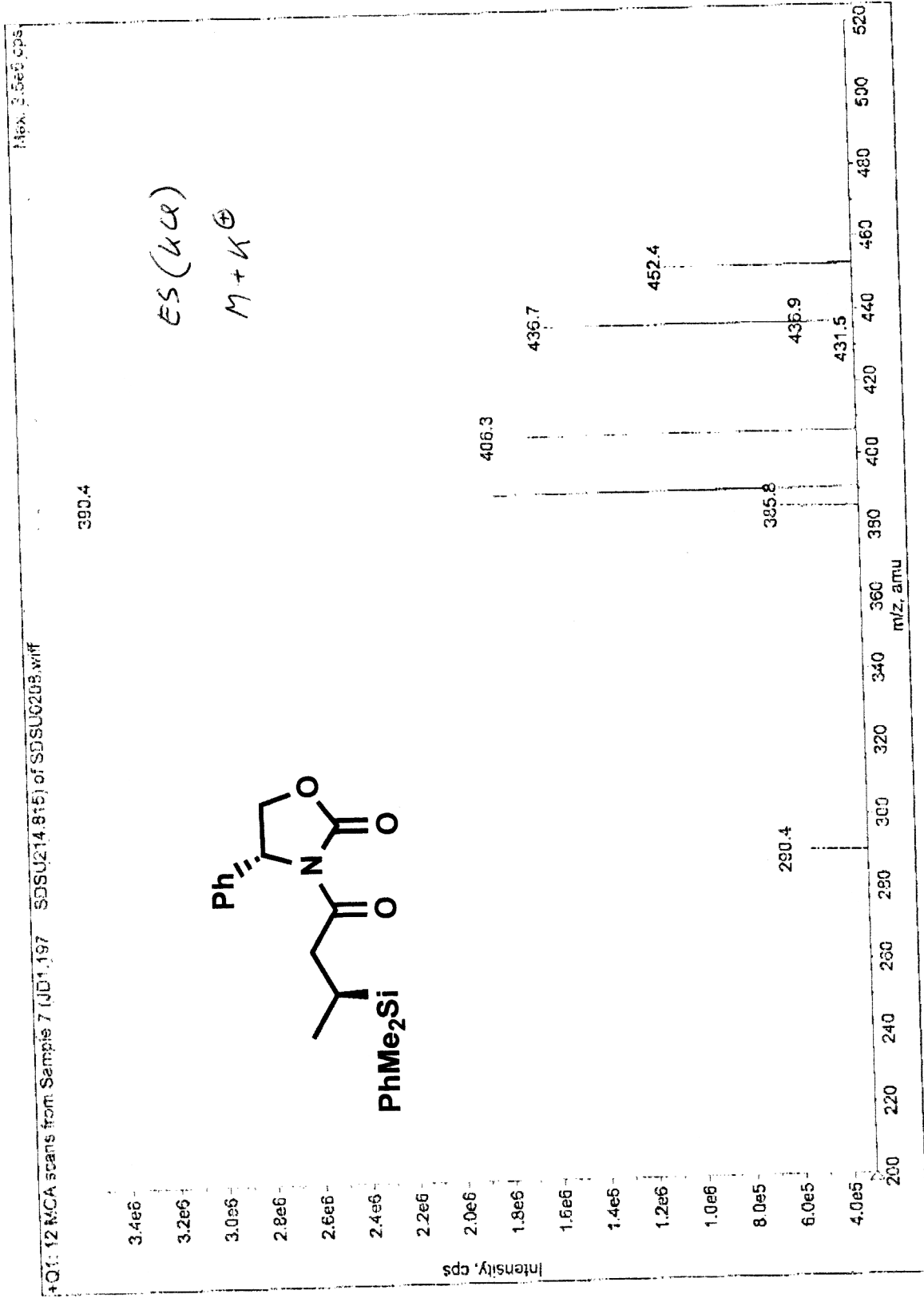
S22

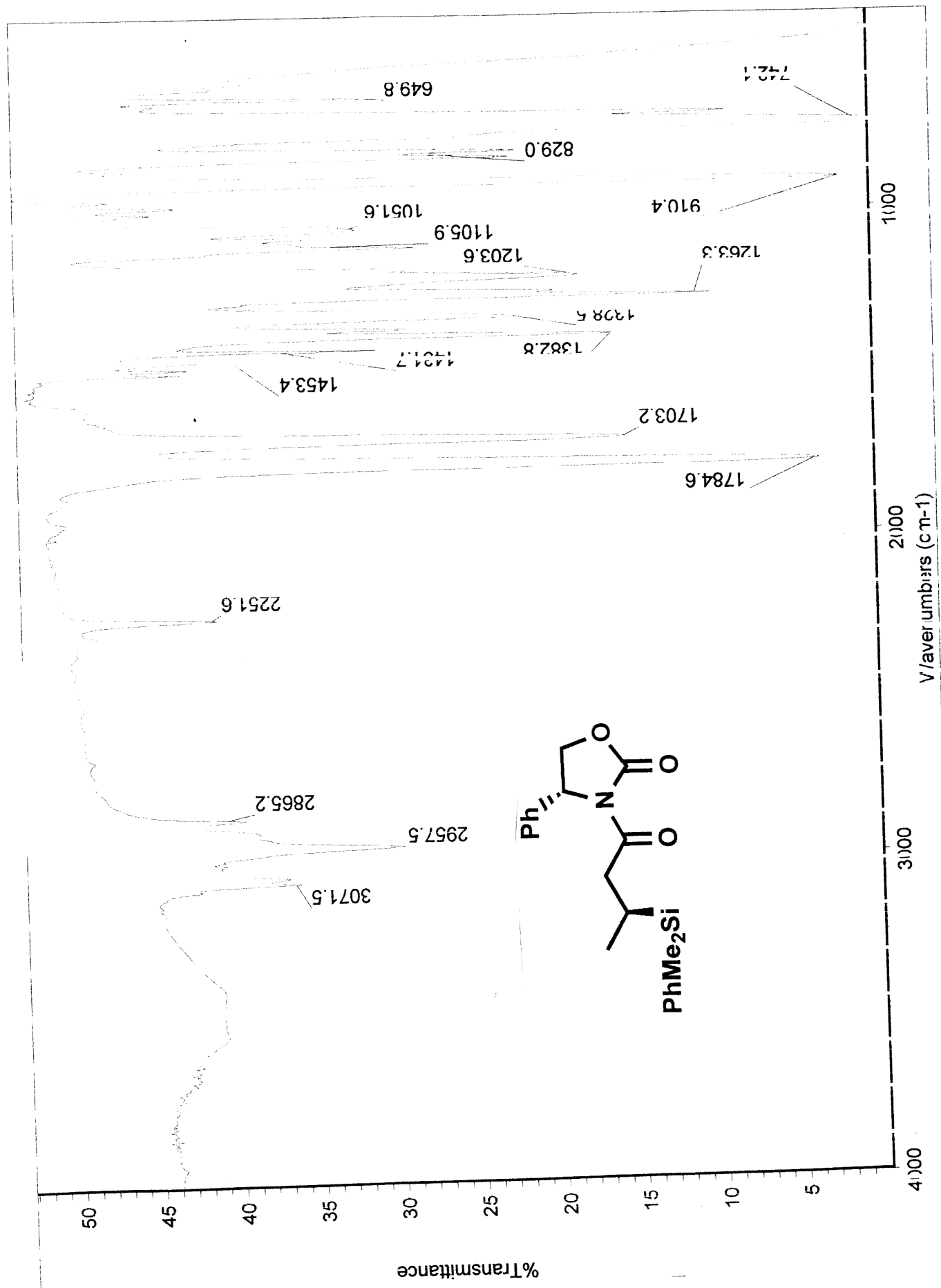


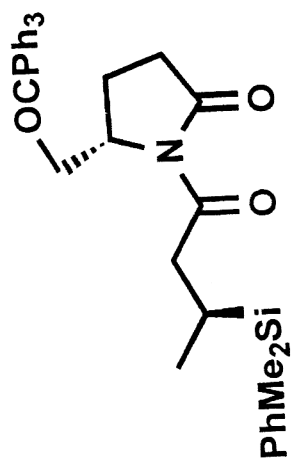
S23

Sample Name: JD1.197
SDSU214.815

Printing Date: Wednesday, August 28, 2002
Polarity/Scan Type: Positive Q1 Scan

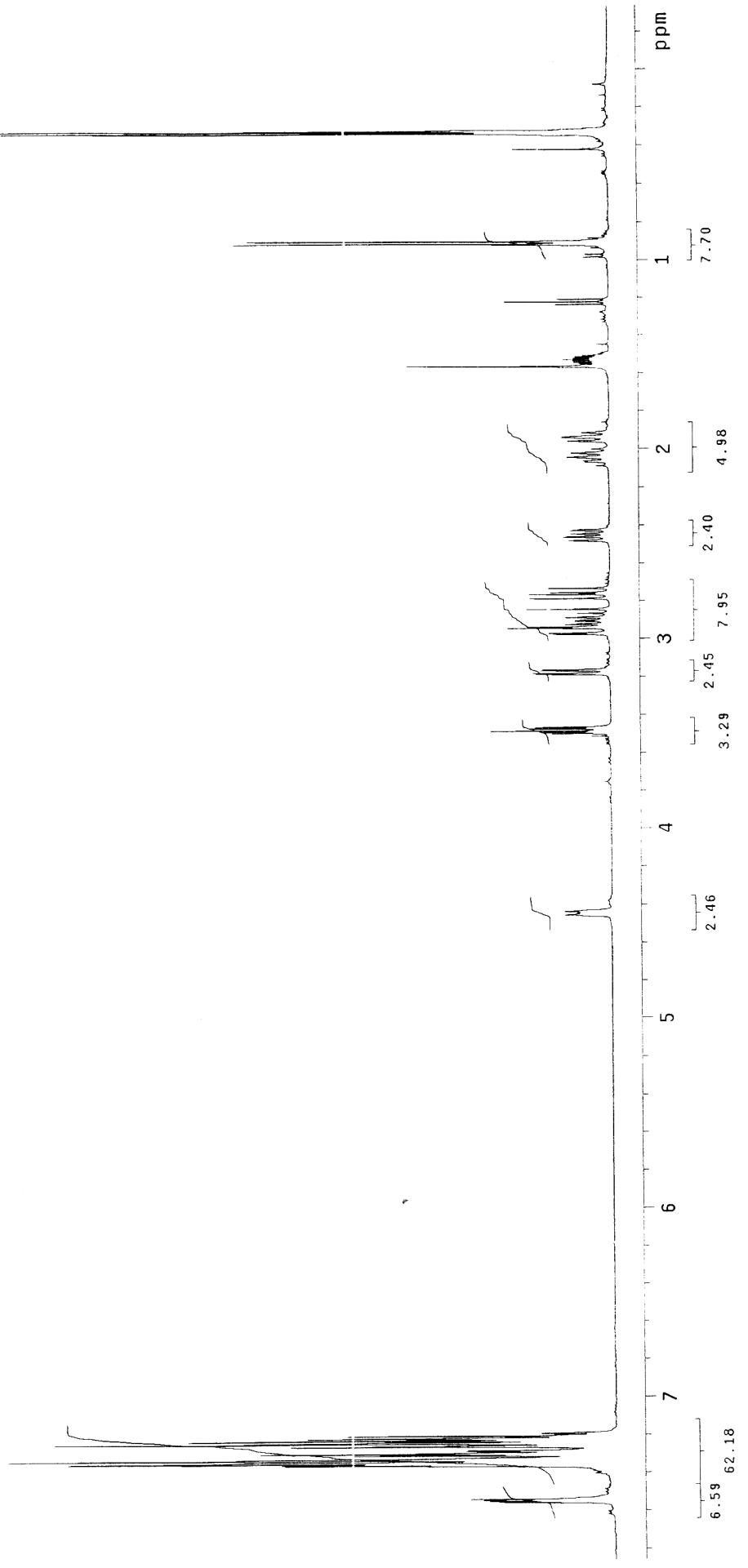






Time 0900 11-MAR-02
 Exp H1
 File
 User Jesse Dambacher
 Sample ...
 Solvent ... CDCl₃

Solvent: CDCl₃
 Temp. 30.0 C / 303.1 K
 INOVA-500 "nmr500"
 PULSE SEQUENCE
 Relax. delay arrayed
 1st pulse arrayed
 2nd pulse 45.0 degrees
 Acq. time 5.000 SEC
 Width 8000.0 HZ
 Arrayed repetitions
 OBSERVE HI, 499.9376065 MHZ
 DATA PROCESSING
 Line broadening 0.2 HZ
 FT size 131072
 Total time 1 minute

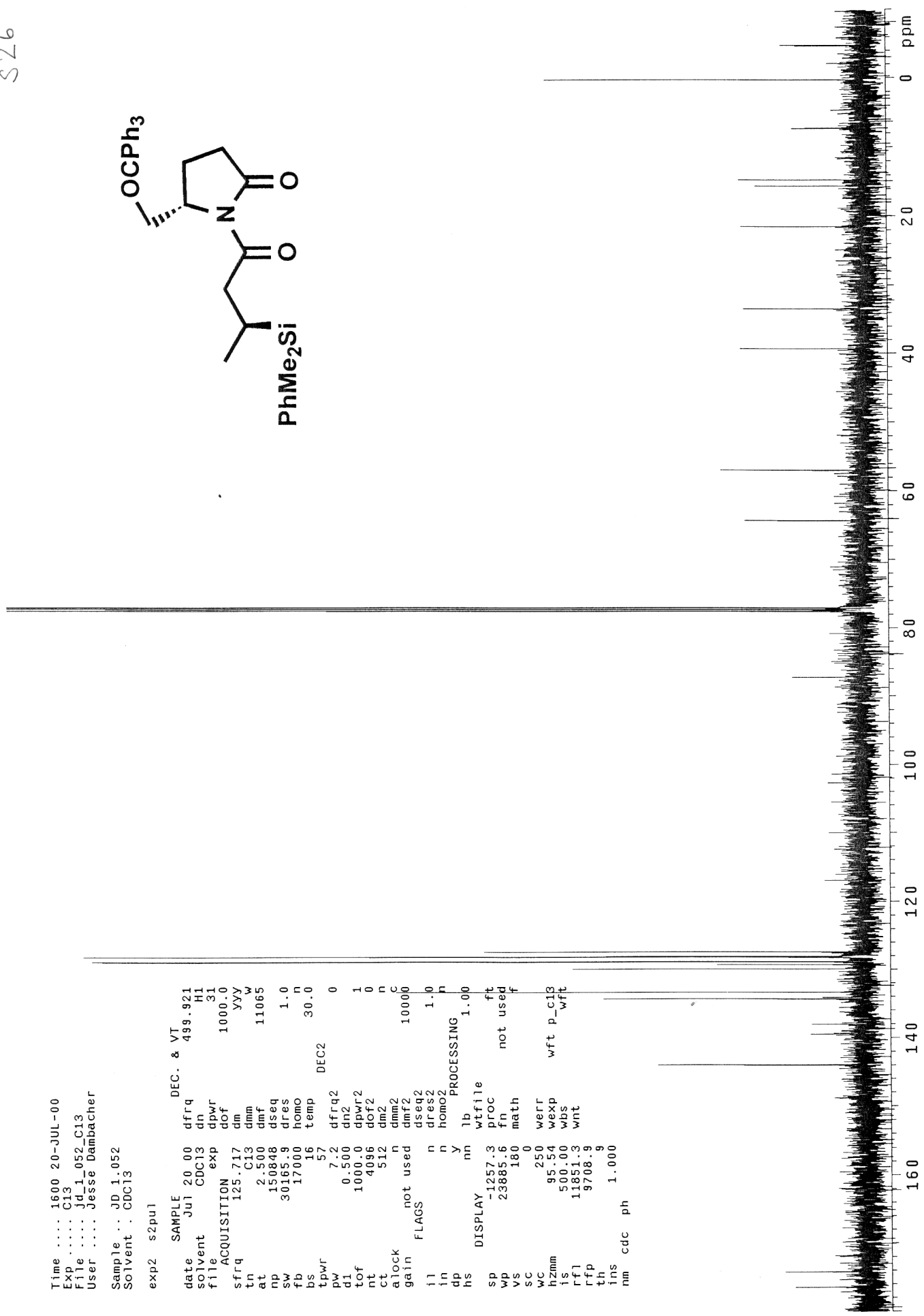
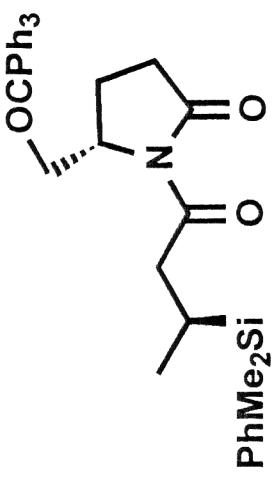


Time 1600 20-JUL-00
 Exp C13
 File jd_1_052_C13
 User Jesse Daibacher

Sample .. JD 1.052
 Solvent . CDC13

exp2 s2pul

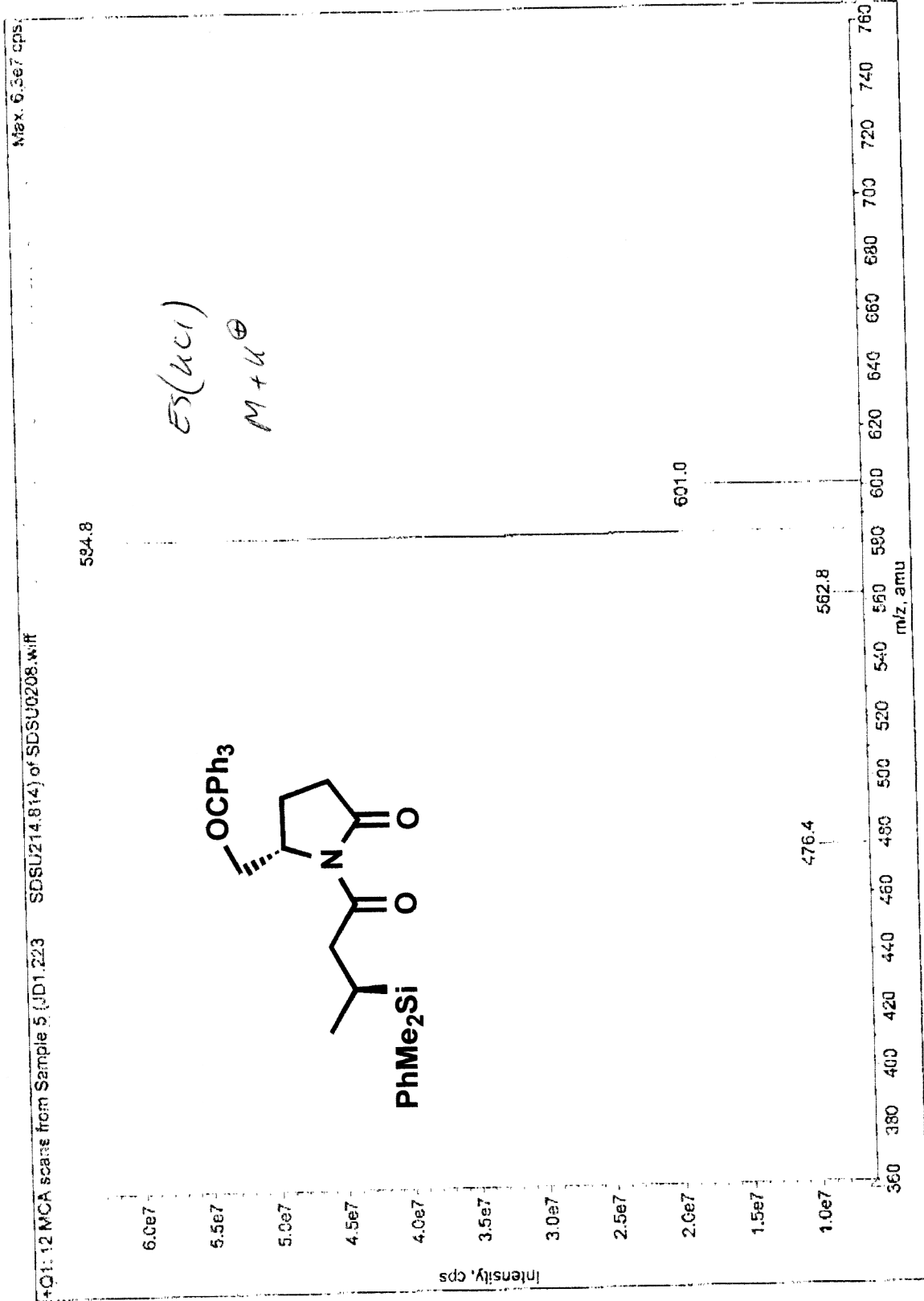
date	20 00	dfrq	DEC. & VT	499.921
solvent	Jul CDC13	dn	H1	31
file	exp	dpwr		1000.0
ACQUISITION	exp	dof		11065
sfrq	125.717	dm	yyy	W
tn	C13	dmm		11065
at	2.500	dmf		1.0
np	150848	dseq		30.0
sw	30165.9	dres		
fb	17000	homo		
bs	16	temp		
tpwr	57	DEC2		
pw	7.2	dfrq2		0
d1	0.500	dn2		1
tof	1000.0	dpwr2		0
nt	4096	dof2		0
ct	512	dm2		n
alock	n	dmm2		C
gain	not used	dmf2		10000
FLAGS		dseq2		1.0
il	n	dres2		n
in	n	homo2		n
dp	y	PROCESSING		1.00
hs	nn	lb		1.00
DISPLAY		wffile		ft
sp	-1257.3	proc		not used
wp	23885.6	fn		f
vs	180	math		
sc	0			
wc	250	werr		wft p_c13
hzmm	95.54	wexp		wft
is	500.00	wbs		
rfl	11851.3	wnt		
rff	9708.9			
th	9			
ins	1.000			
nm	cdc			
ph				

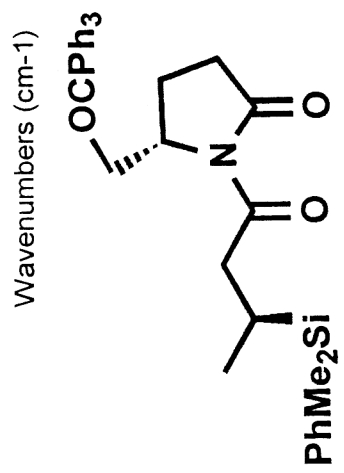
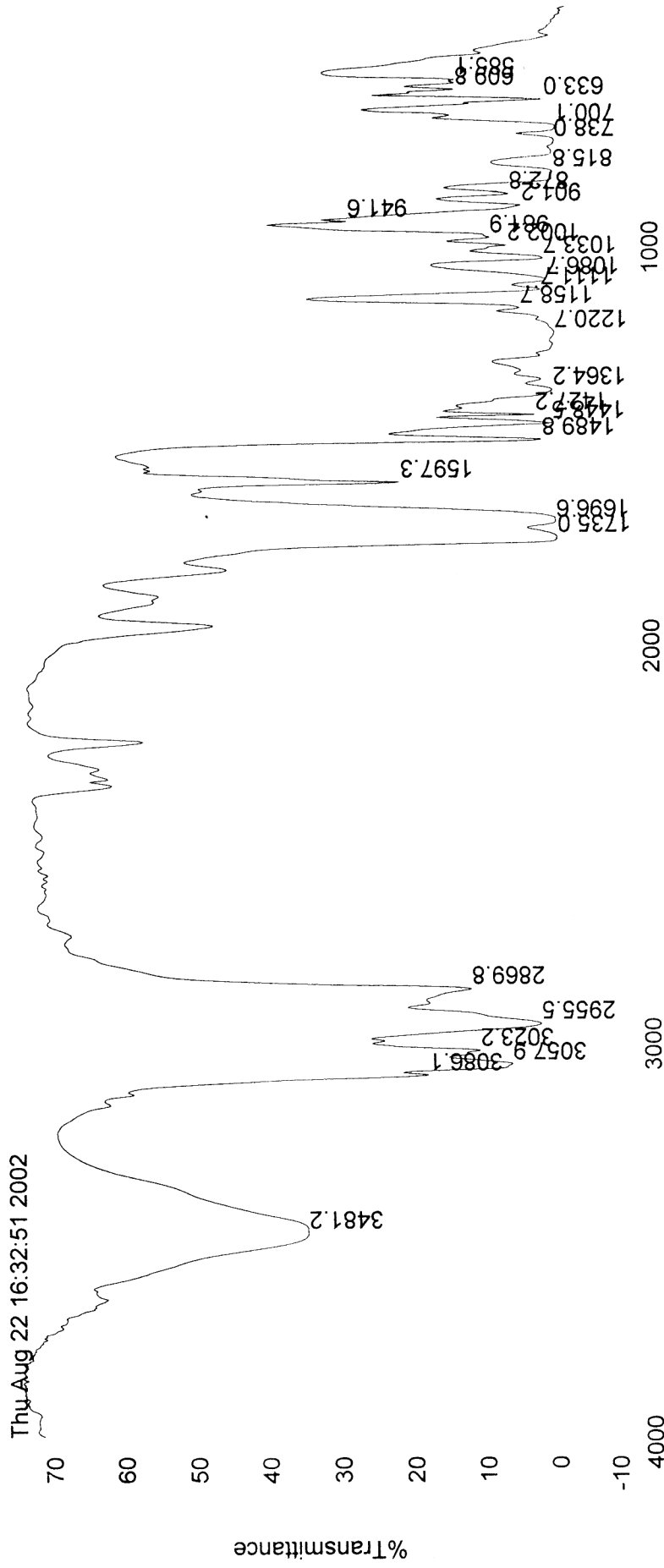


S27

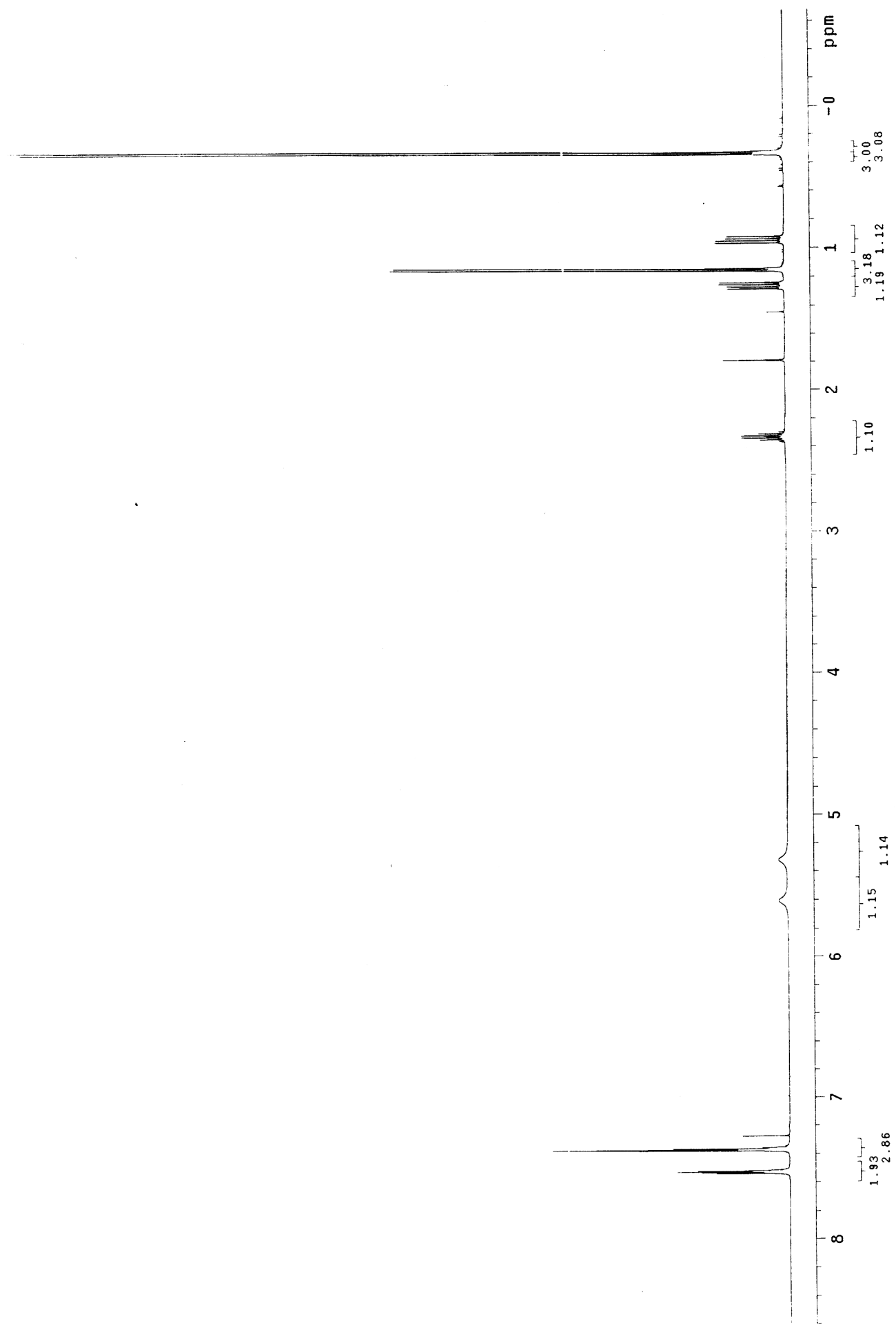
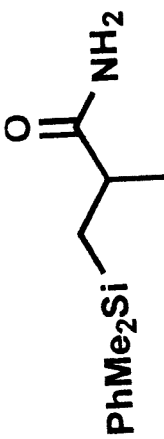
Sample Name: JD1.223
SDSU214.814

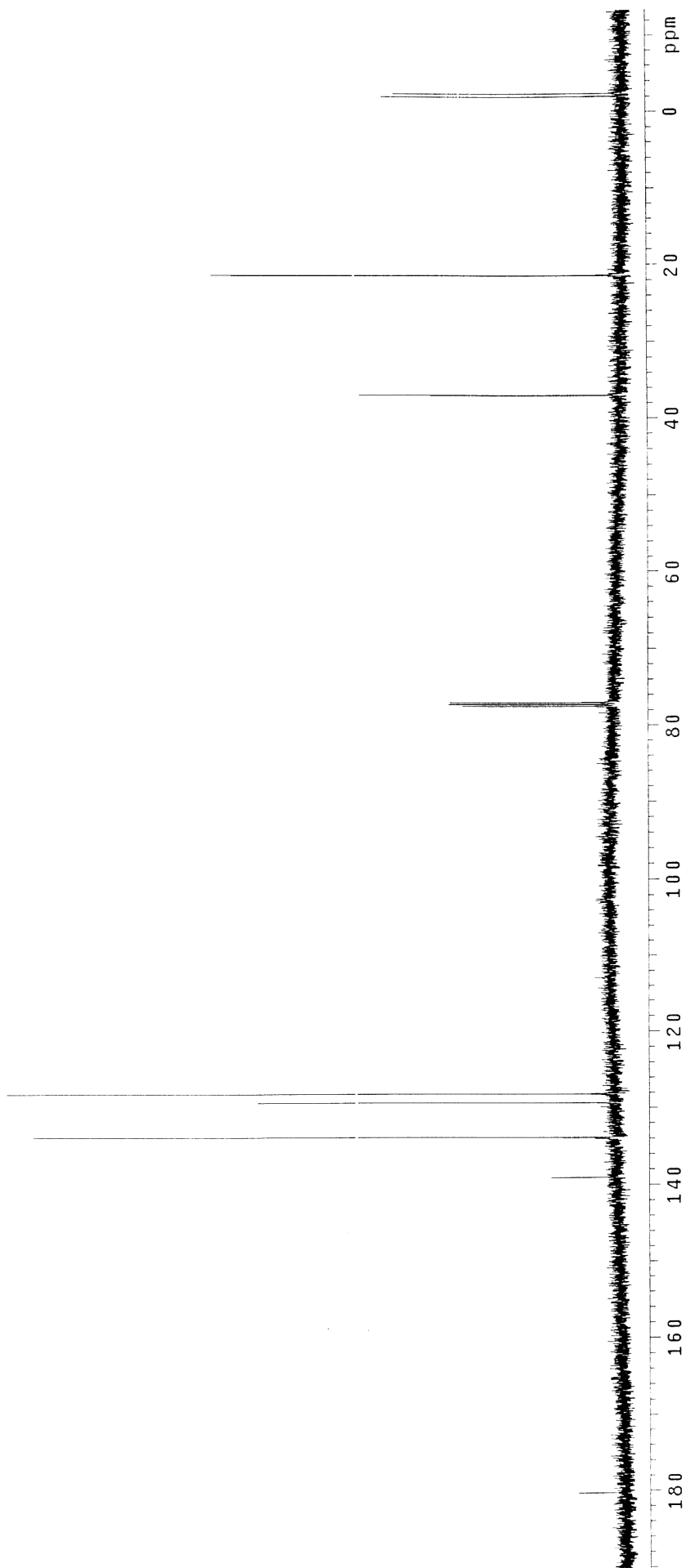
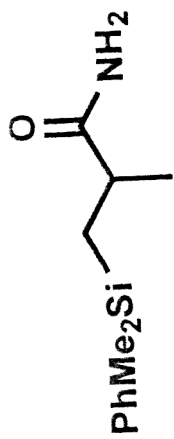
Printing Date: Wednesday, August 28, 2002
Polarity/Scan Type: Positive Q1 Scan





S29





Chromatogram Plot

File: c:\saturday\data\sam\8-24-02 prim:
Sample: primary amide
Scan Range: 1 - 1569 Time Range: 0.00



Operator: sang
Date: 8/24/02 1:12 PM

