

Electronic Supplementary Information

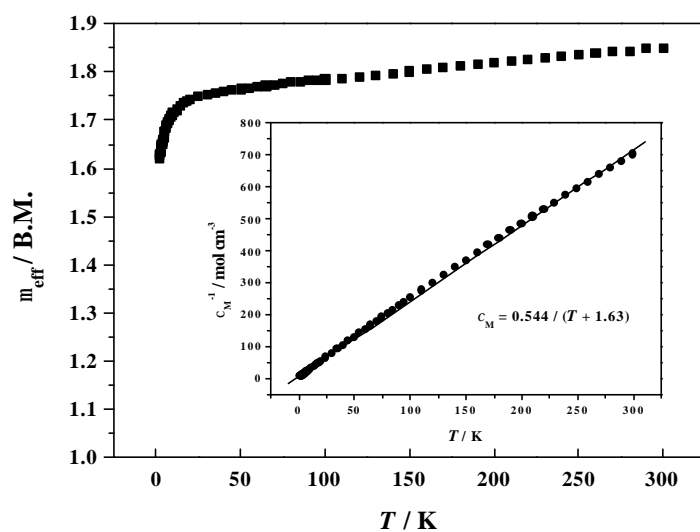


Fig. S1 Magnetic susceptibility of **1** plotted as m_{eff} versus T and $1/C_M$ versus T (insert).

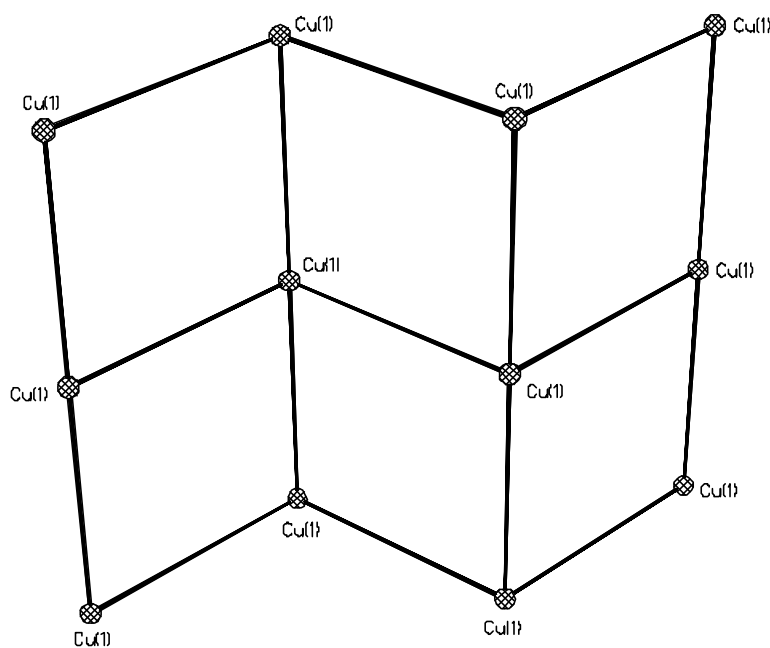


Fig. S2 Plot of paramagnetic Cu(1) atoms bridged by 4-pya ligand (the 4-pya molecular rods are shown as single bold lines).

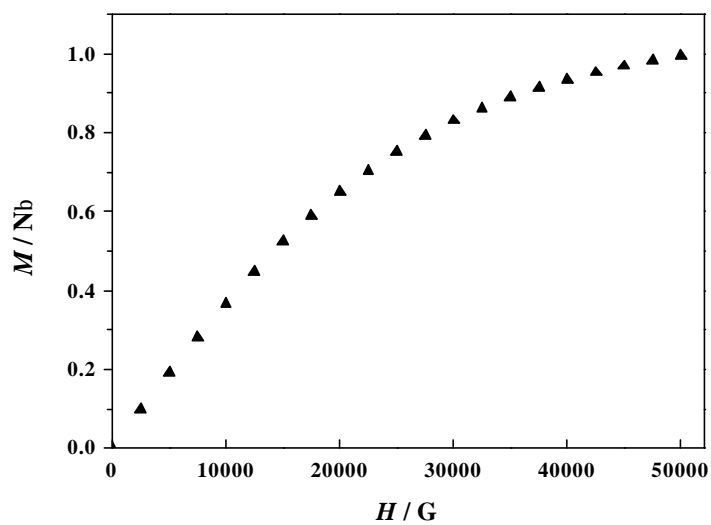


Fig. S3 Magnetization isotherm at 2 K for a powdered sample of **1**.

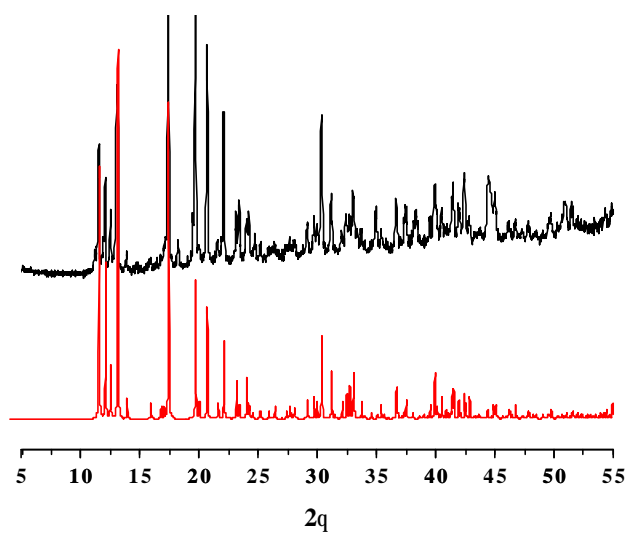


Fig. S4 Experimental (black line) and simulated (red line) powder X-ray diffraction pattern of **1**.