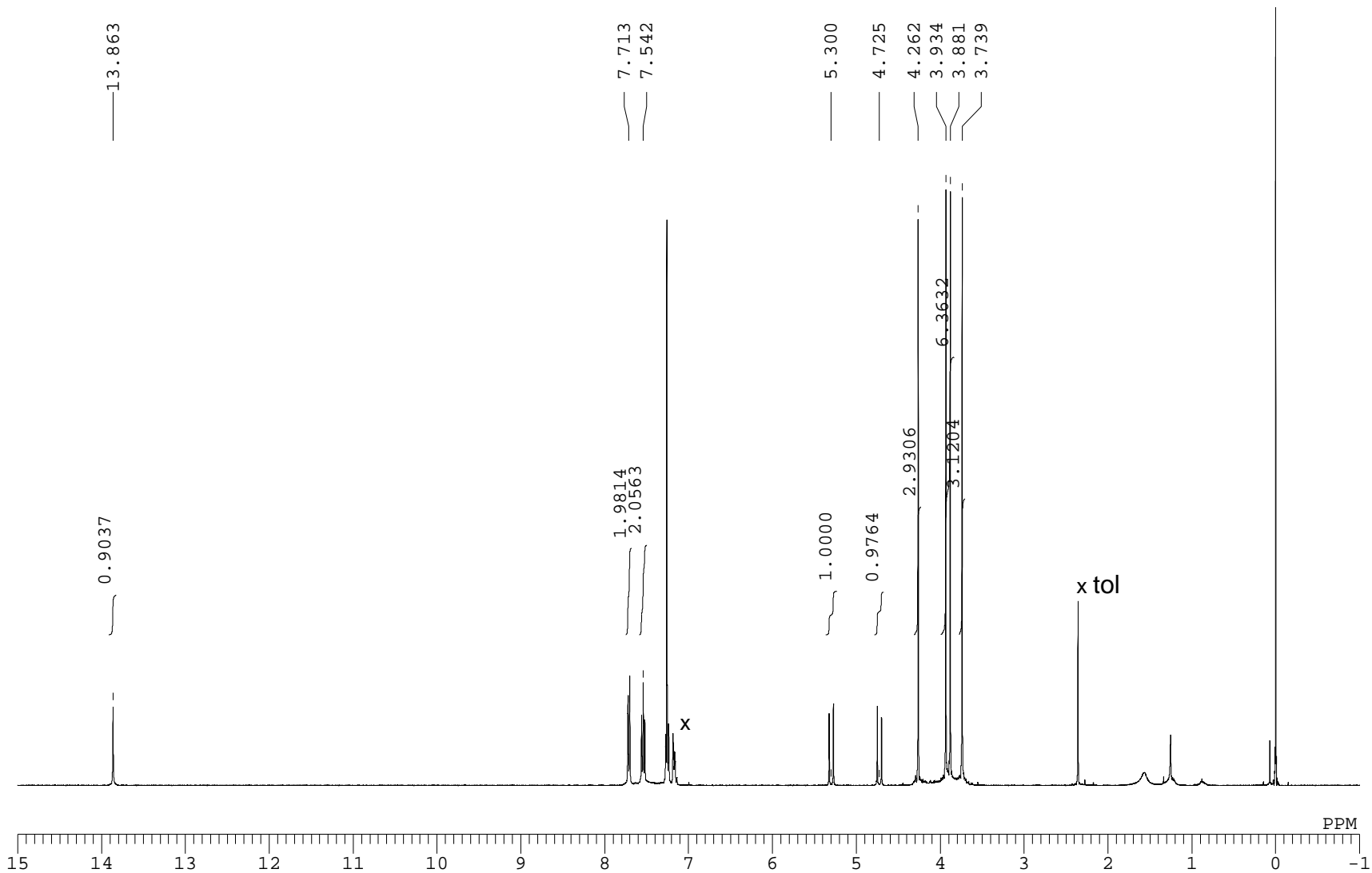
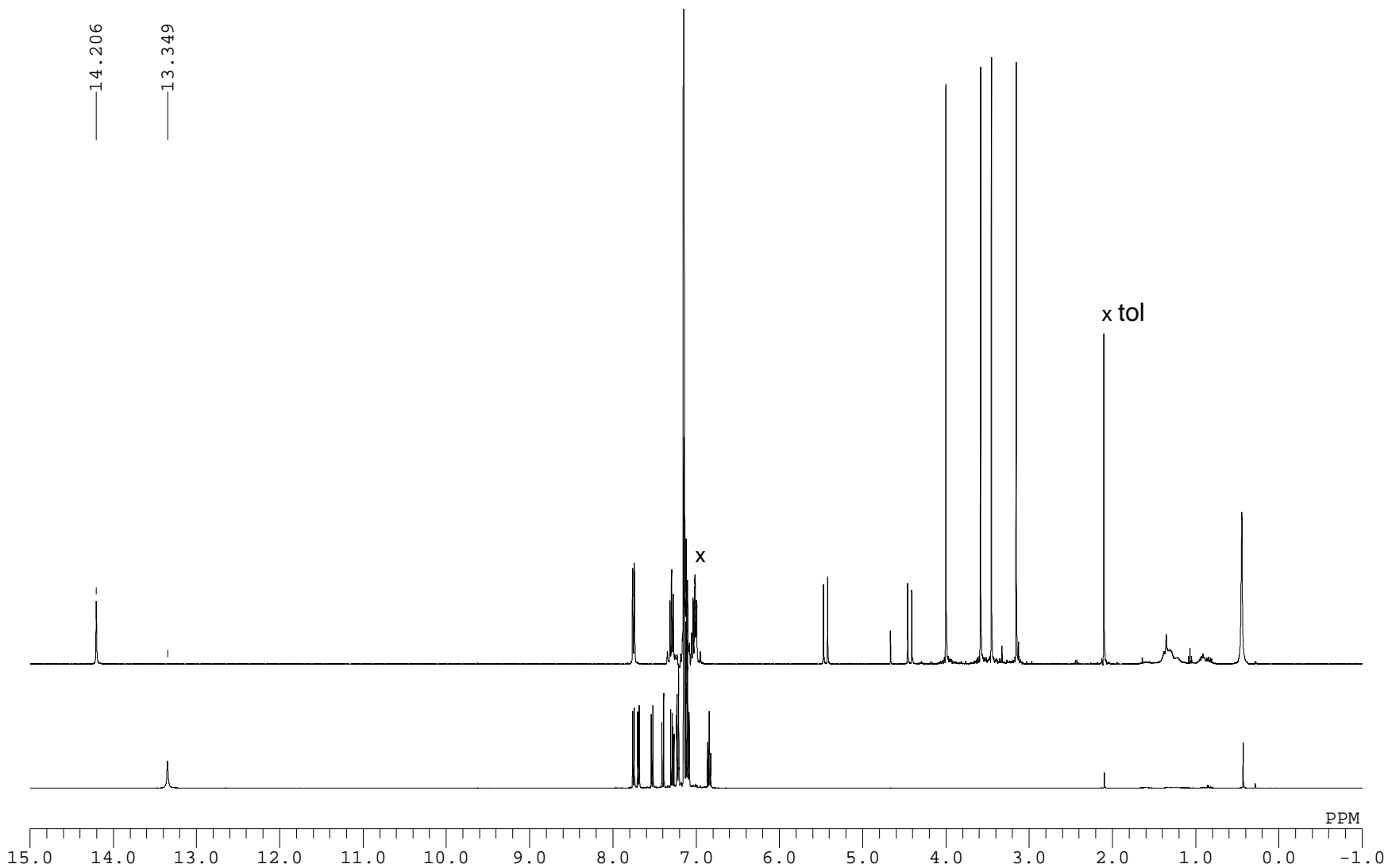
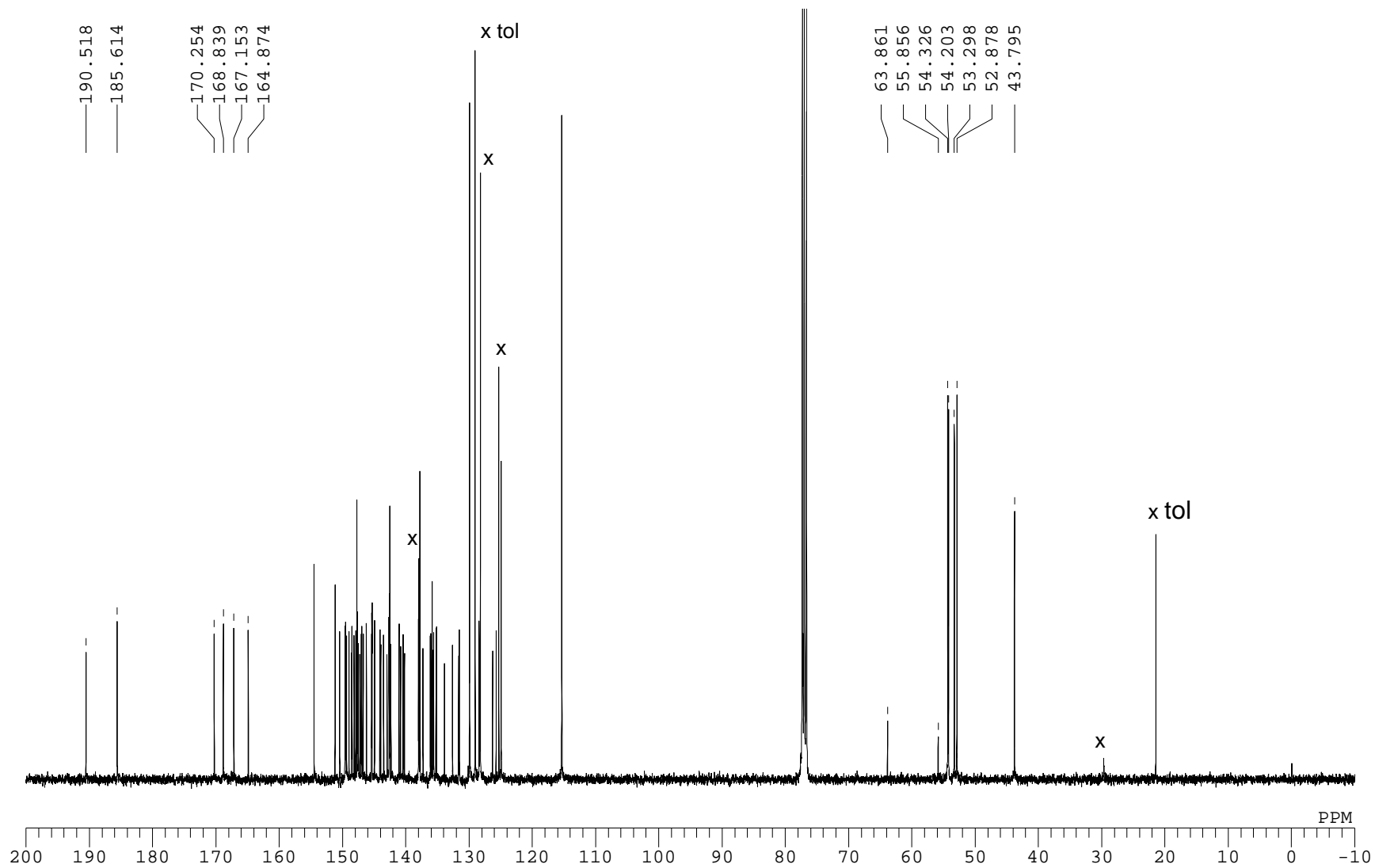
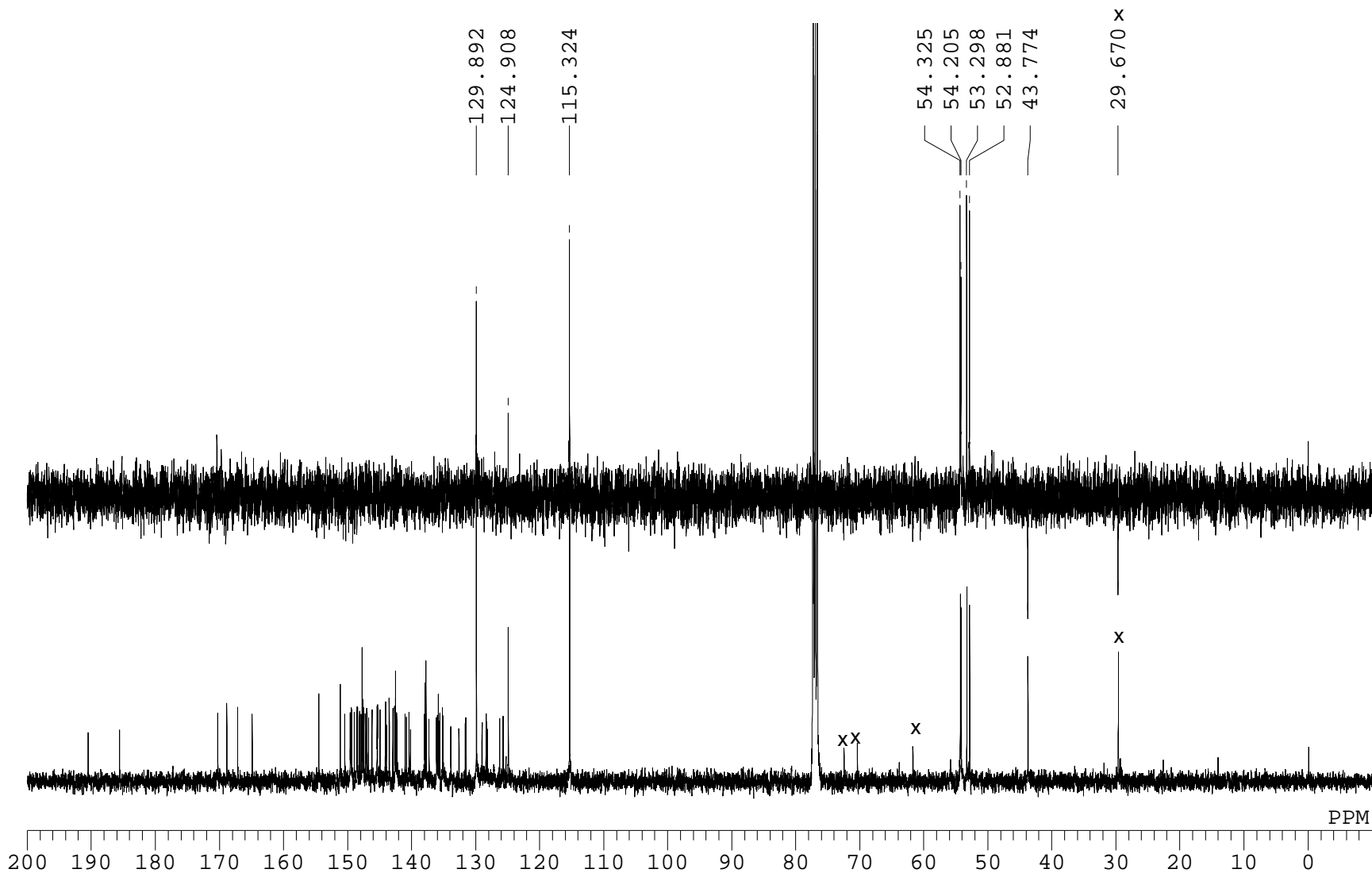


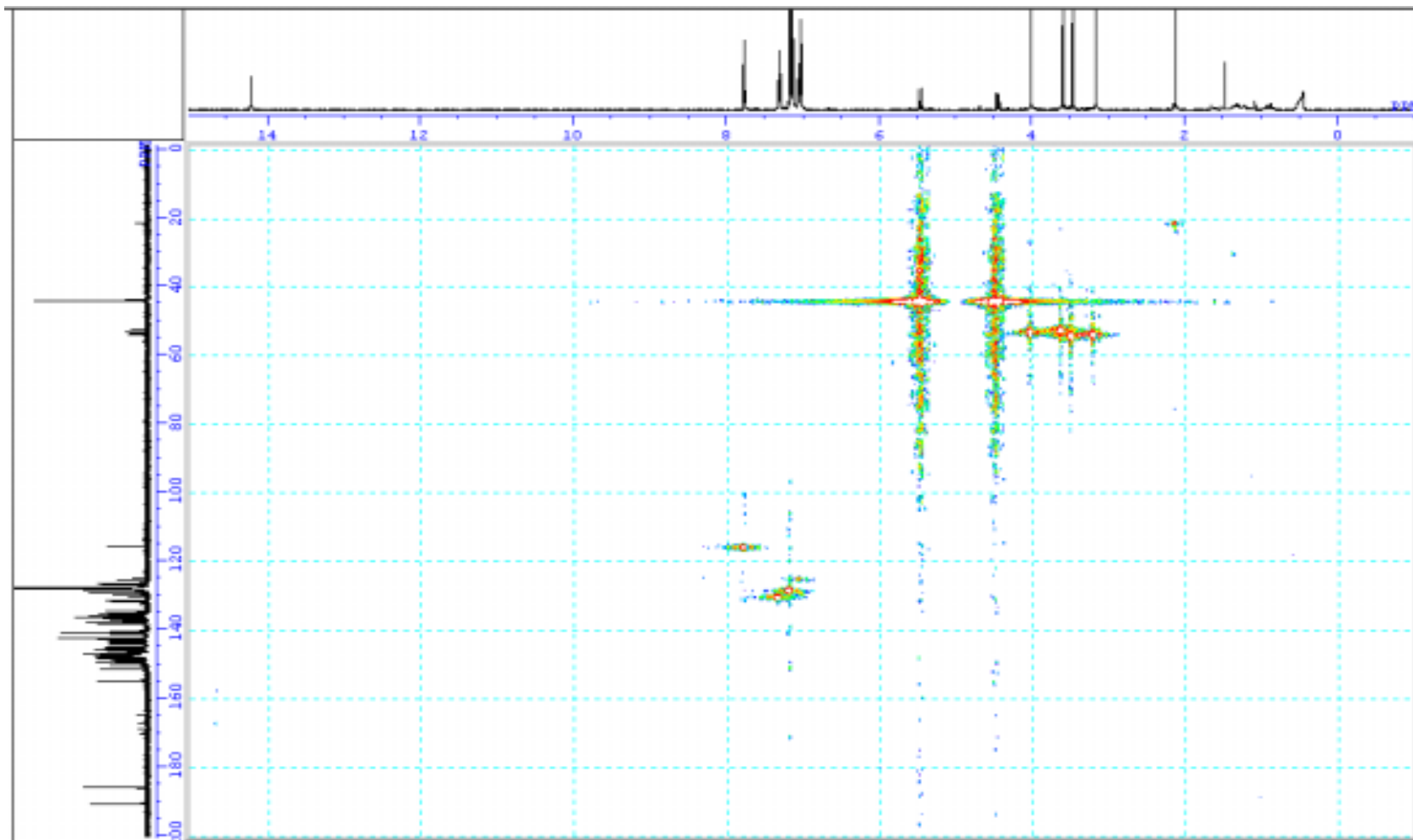
^1H NMR spectrum of 3a in CDCl_3 

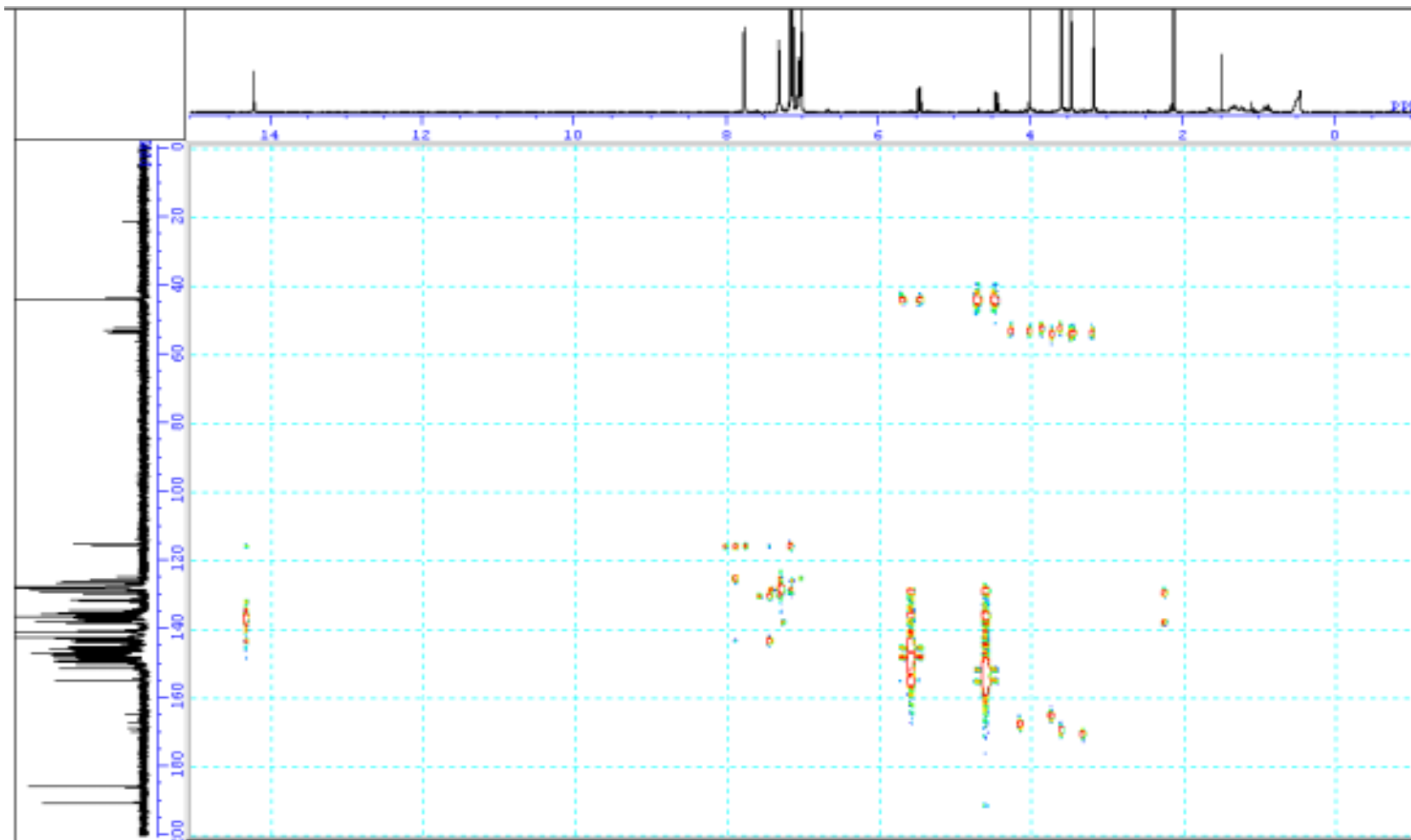
^1H NMR spectrum of 3a (top) and acenaphthenequinone monophenylhydrazone (bottom) in C_6D_6

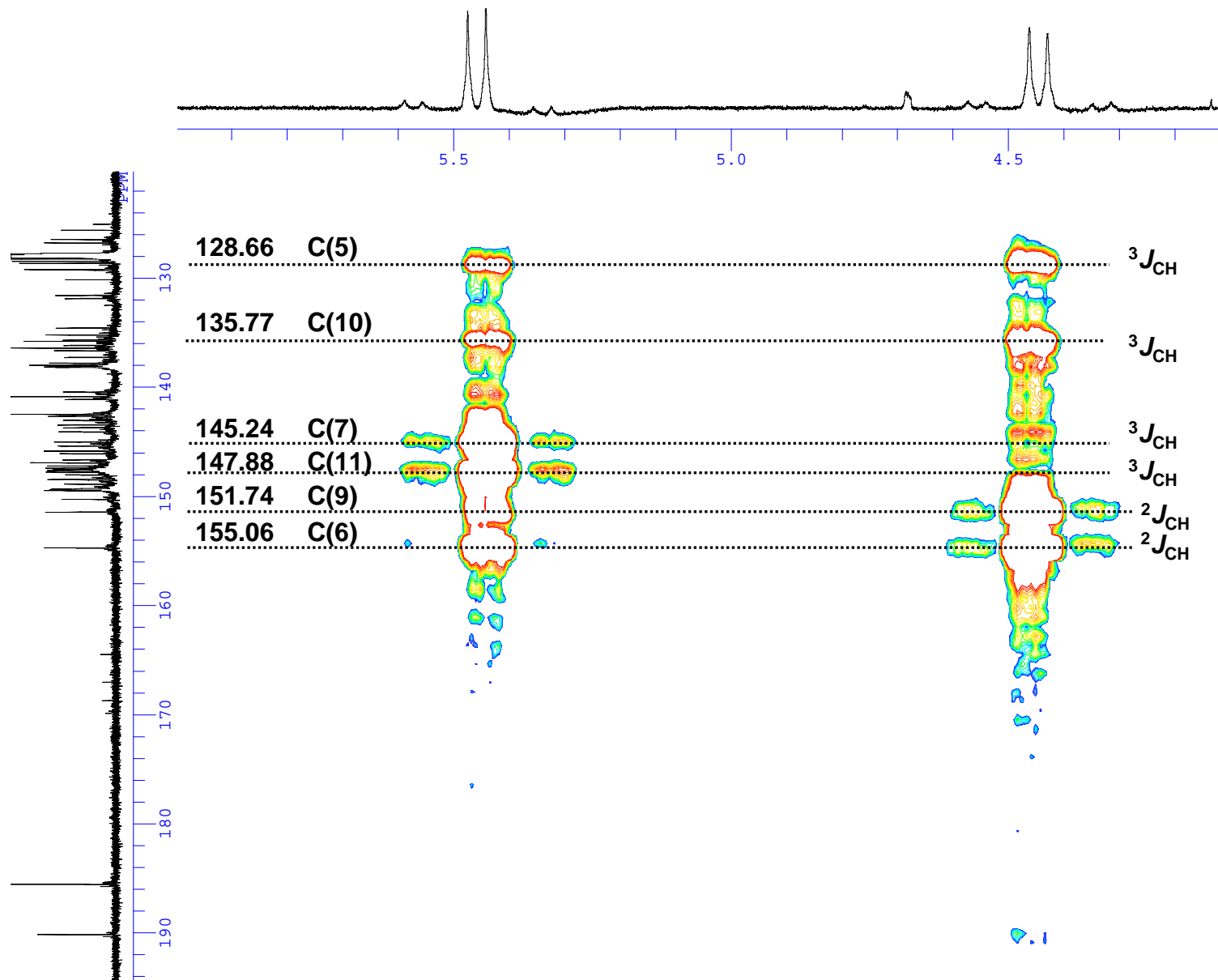


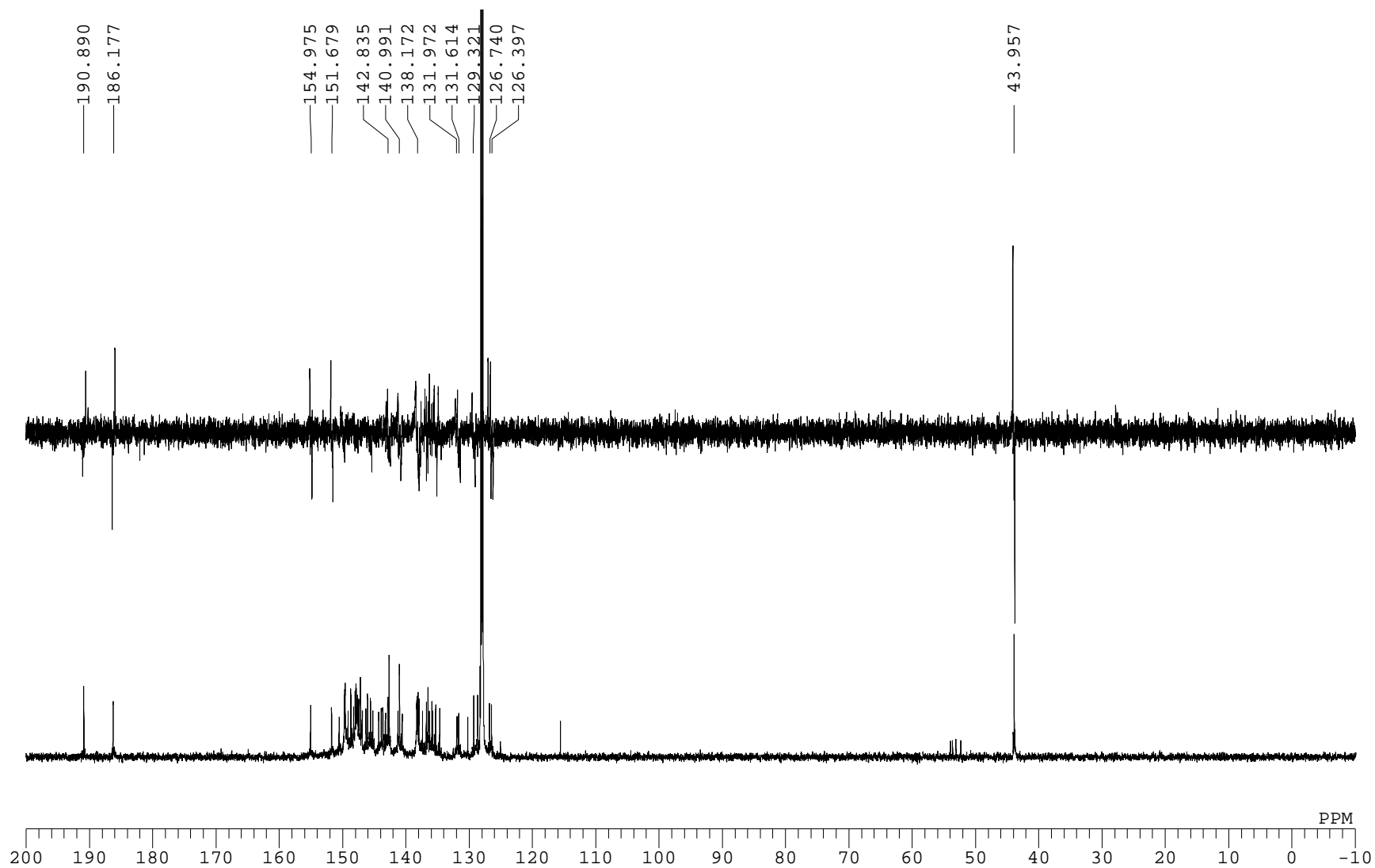
^{13}C NMR spectrum of 3a in CDCl_3 

DEPT135 NMR spectrum of 3a in CDCl₃

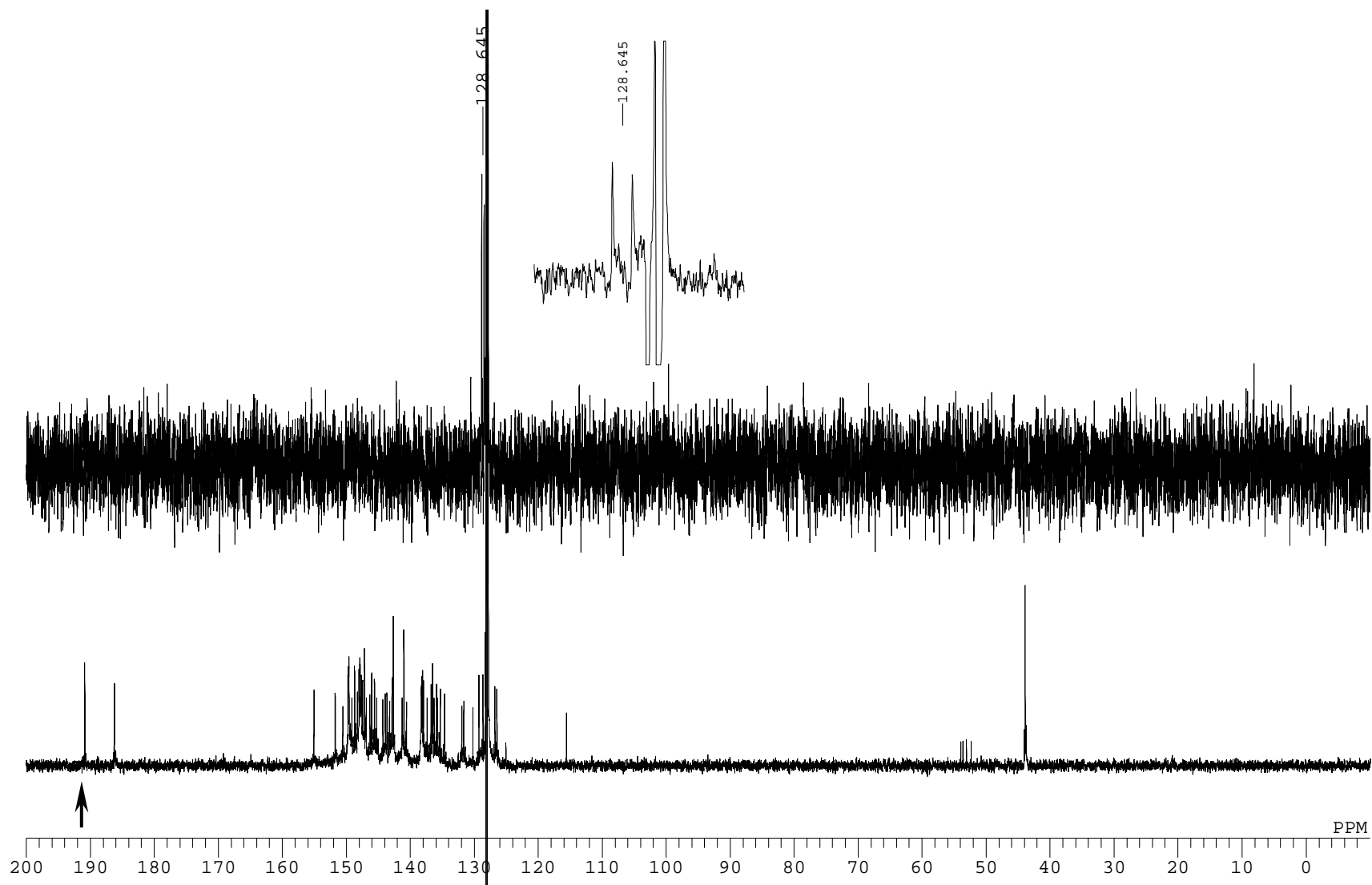
HMQC NMR spectrum of 3a (^{13}C enriched) in C_6D_6 

HMBC NMR spectrum of 3a (^{13}C enriched) in C_6D_6 

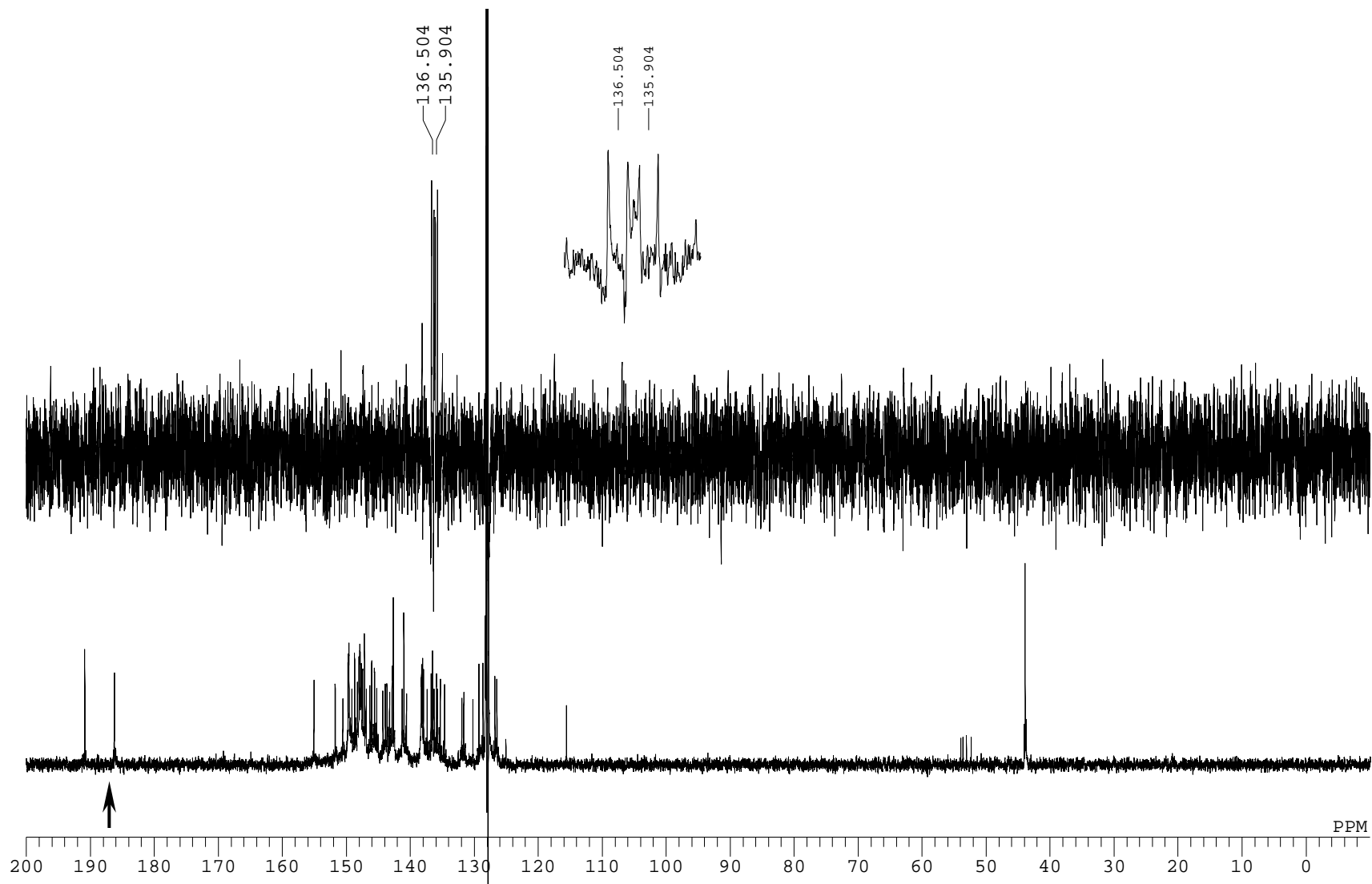
HMBC NMR spectrum of 3a (^{13}C enriched) in C_6D_6 

INADEQUATE 1D spectrum of 3a (^{13}C enriched) in C_6D_6 ($J_{\text{cc}}=57$ Hz)

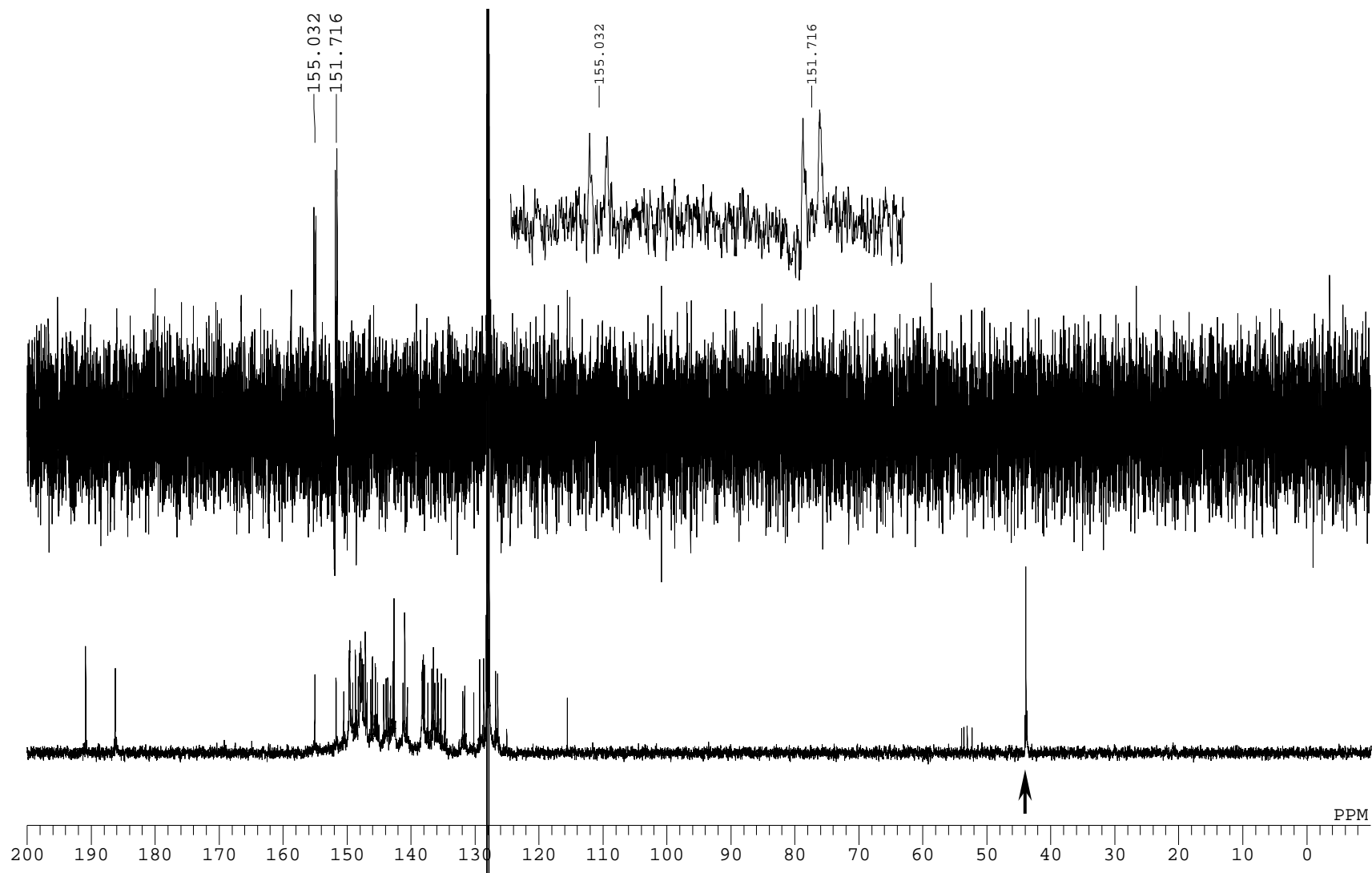
Selective INADEQUATE 1D spectrum of 3a (^{13}C enriched) in C_6D_6
(OBS2: 190.9 ppm, $J_{\text{cc}}=57$ Hz)



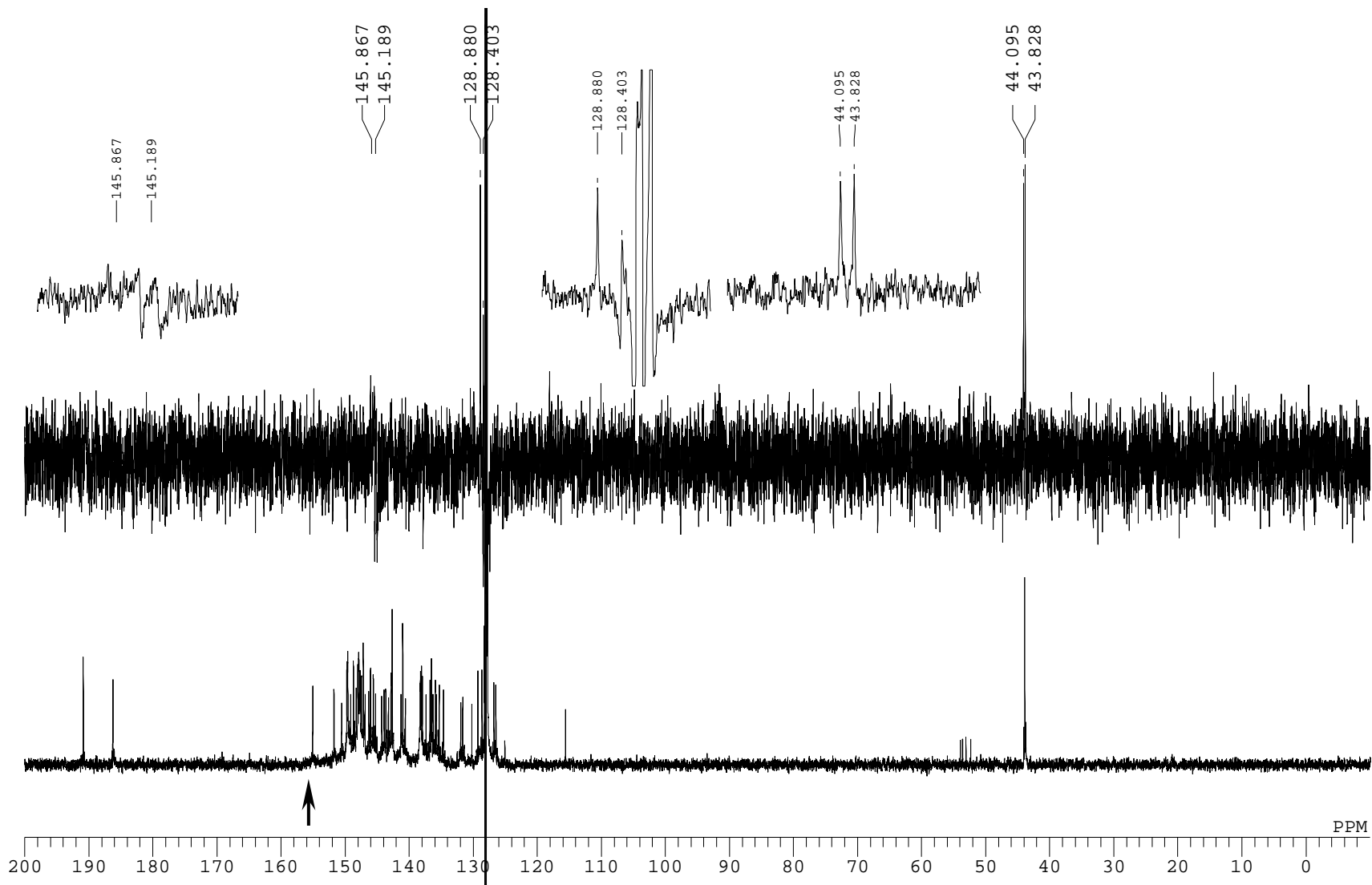
Selective INADEQUATE 1D spectrum of 3a (^{13}C enriched) in C_6D_6
(OBS2: 186.2 ppm, $J_{\text{cc}}=57$ Hz)



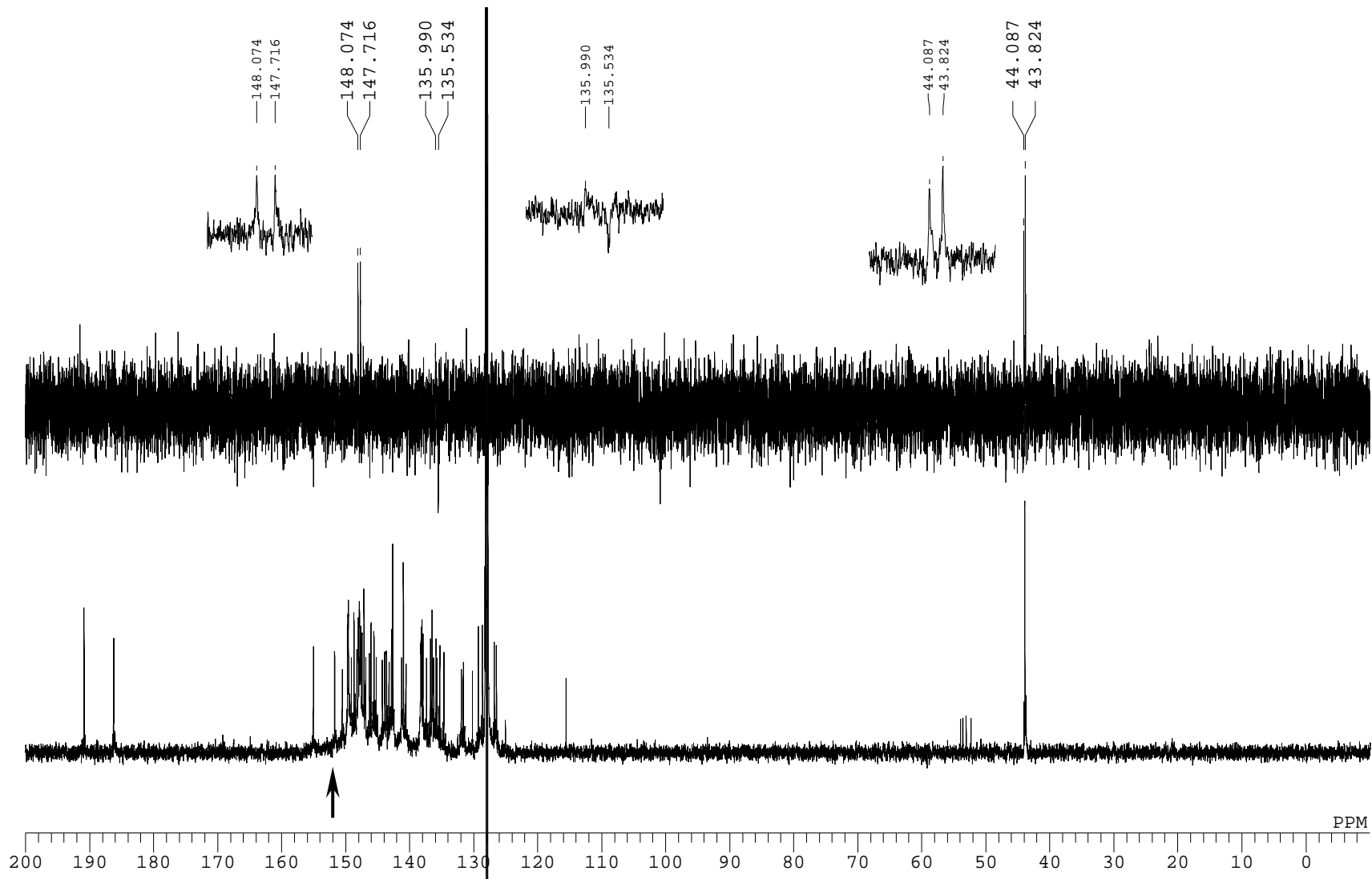
Selective INADEQUATE 1D spectrum of 3a (^{13}C enriched) in C_6D_6
(OBS2: 44.0 ppm, $J_{\text{cc}}=77$ Hz)



Selective INADEQUATE 1D spectrum of 3a (^{13}C enriched) in C_6D_6
(OBS2: 155.1 ppm, $J_{\text{cc}}=57$ Hz)



Selective INADEQUATE 1D spectrum of the ^{13}C enriched 3a in C_6D_6
(OBS2: 151.7 ppm, $J_{\text{cc}}=57$ Hz)



ES-Mass spectrum (neg.) of 3a

529R

020711_7 83 (1.522) Cm (71:85)

TOF MS ES-
3.88e3